

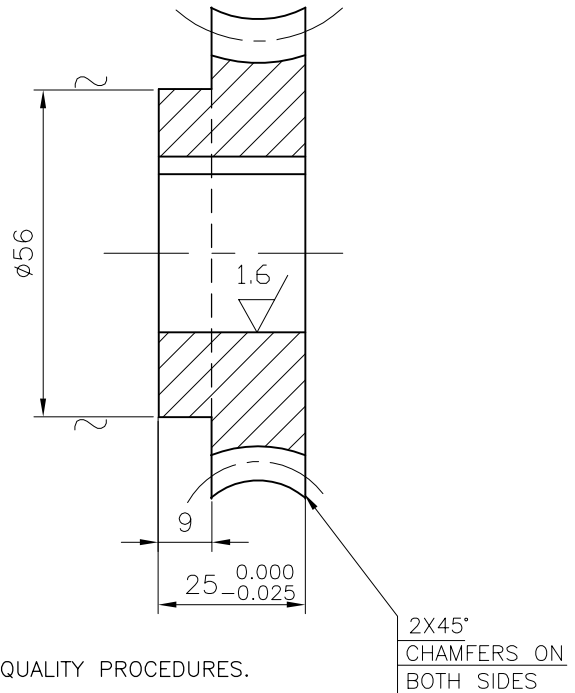
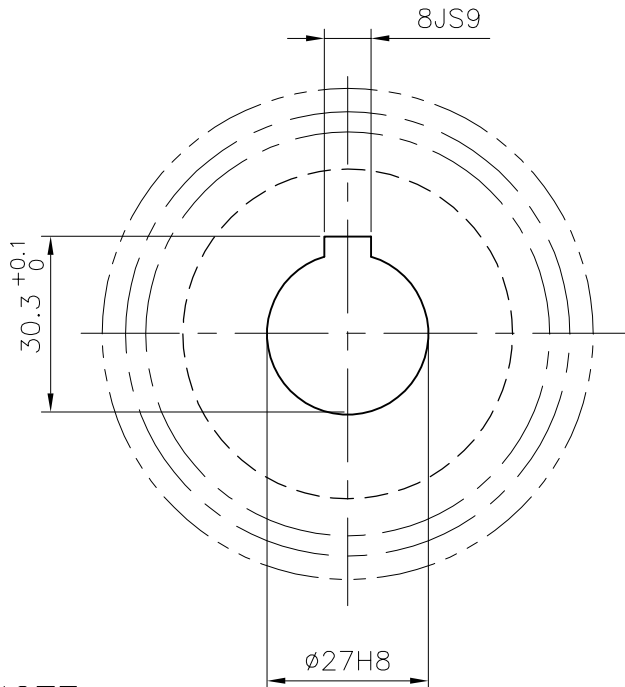
CAUTION: The information on this document is the property of BHARAT HEAVY ELECTRICALS LTD. It must not be used directly or indirectly in any way detrimental to the interest of the company.

ALL DIMENSIONS ARE IN MILLIMETRES.

FOR TOLERANCES OF UNTOLERANCED DIMENSIONS DURING MANUFACTURE REFER RELEVANT QCP/QP

REV	DATE	ALTERED	K.S
08	9.11.04	CHD & APPD	S.N
DRAWING REDRAWN.			
DCN.NO: 800386			

3.2/ (1.6/, ~)



#### NOTE:—

FOR QUALITY REQUIREMENTS REFER LATEST APPLICABLE QUALITY PROCEDURES.

ACTUAL CENTRE DISTANCE PROVIDED ON THE HOUSING =  $54^{+0.1}_0$

WORM GEAR TO RUN WITH WORM STYLE NO. 01

DRG. NO. 3-20-201-00119 SINGLE THREAD.

#### TOLERANCE ON. GEAR BLANK

TIP DIA  $\begin{smallmatrix} +0.0 \\ -0.046 \end{smallmatrix}$ MM

RADIAL AND AXIAL RUNOUT OF REF SURFACE =  $\pm 0.017$ MM  
GEAR DATA.

30 TEETH; 10DP (NORMAL); SINGLE THREAD;

3" PITCH DIA. 14 1/2° PRESSURE ANGLE;

THROAT DIA = 3.2". OUTER DIA=3.3".

THROAT RADIUS = 0.525"

RADIAL RUN OUT (TIR) = 0.042MM

MINIMUM PRESCRIBED BACKLASH  
WHEN TEETH ARE IN CONTACT


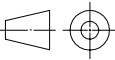
#### CONTACT AREA

x2h MINIMUM – 60%

x2b MINIMUM – 65%

LEAD ANGLE = 4°34'

PART CODE: 842020112300

	GEAR BLANK CASTING	160134140000	IS305 GrAB1			0.63				
NO OFF	DESCRIPTION	MATL CODE	MATL SPECN	HEAT TREATMENT	SCRAP SORT	NET WT (kg)	GROSS WT (kg)	DRAWING No	ITEM No	
<div> 365-122</div> <div>BHARAT HEAVY ELECTRICALS LTD., UNIT: HIGH PRESSURE BOILER PLANT. TIRUCHIRAPALLI 620014.</div>					DRN	NAME S.NAPPI	SIGN S.N	DATE 9.11.04	NO.OF VAR	
					CHD	K.SRIDHARAN	K.S	9.11.04		
					APPD	S.NATARAJAN	S.N	9.11.04		
DEPT SB			SCALE  1:1	WEIGHT (KG).  0.63	REFERENCE INFORMATION				NO. OF ITEMS	
CODE 330										
TITLE  WORM GEAR					CARD CODE  U 01	DRAWING NO.  4-20-201-00183				REV  08