



BHARAT HEAVY ELECTRICALS LIMITED
INDUSTRIAL VALVES PLANT
433, INDUSTRIAL COMPLEX
GOINDWAL SAHIB
DISTT. TARN TARAN- PUNJAB – 143422

No.BHEL:IVP:
SC:TOA:AD
2019-20/01
Dated
11.04.2019

NOTICE INVITING APPLICATIONS FOR REGISTRATION OF SUB CONTRACTORS

BHARAT HEAVY ELECTRICALS LIMITED [BHEL] is manufacturing Industrial Valves and other Boiler accessories at its Industrial Valves Plant, Goindwal Sahib unit. Vendors are required for job work for components of TOA Valves (Details as per enclosed list). Annual procurement value for FY 19-20 is Rs 3 Lac

Expression of interest and applications for registration are invited from sub-contractors (BHEL encourages procurement from Micro and Small Enterprises (MSEs), MSEs are requested to apply for registration) for doing the machining job of various components of TOA Valves. Various work centers involved in the machining jobs shall be CNC, VMC, Slotter. Chrome plating/nickel plating/Heat treatment/nitriding may also be required on certain components

TOA Valves	Machining of Body/Yoke castings, Bonnet, Disc and various other items such as Disc Nut, Stopper, Yoke stopper, Yoke clamp, Handle boss, Set Pin, Retaining Ring, Sunk Key etc. Some items may also require Tuffriding/Liquid Nitriding, chrome plating, nickel plating, heat treatment post machining. List of components, where machining vendors are required, is attached herewith as Annexure-I. Sample drawings of some components are also attached. S No of the list 4 and 57.
-------------------	--

BHEL is looking for prospective Sub Contractors for above detailed job work for BHEL.

BHEL shall evaluate the vendors as per its established vendor selection, evaluation and registration procedure. Supplier registration can be done online <https://supplier.bhel.in/>

BHEL invites such vendors to visit its above located plant on any working day from Monday to Saturday between 0900 Hrs to 1730 Hrs and contact undersigned for any clarification regarding:

Items details and requirement		Vendor registration form/procedure
Vineet Kumar Dy. Manager (Sub Contracting)	Mukesh Kumar Sr. Engineer (Sub Contracting)	Sahil Malhotra Dy.Manager (Sub-Contracting)
Phone: 01859-224625	01859-224644	01859-224669
Mobile: 099150 47504	081465 52387	098142 09180
E-mail: vineet.k@bhel.in	kumarmukesh@bhel.in	sahil@bhel.in

BHARAT HEAVY ELECTRICALS LIMITED INDUSTRIAL VALVES
PLANT, 433, INDUSTRIAL COMPLEX, GOINDWAL SAHIB,
DISTT. TARN TARAN, PUNJAB – 143 422

TOA Valves - List of items in which additional vendors are required for job work

Annexure - I

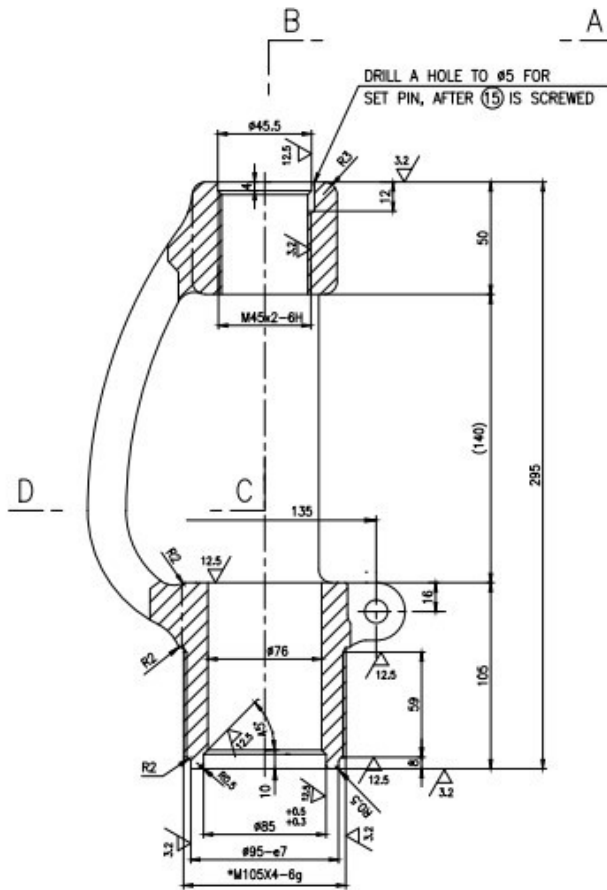
S.No	Gr. No	Job/Component Description	Description of Valve/ Product (Used in)
1	G2313a	Body Rough	2.5-C1500-GLV-BW-HO-WC9
2	G2313b	Body Rough	3-C1500-GLV-BW-HO-WC9
3	G2313d	Body Rough	5-C1500-GLV-BW-GO-WC9
4	G2345	Yoke Machining	3-C1500-GLV-BW-HO-WC9
5	G2310	Yoke Machining	5-C1500-GNV-BW-MO-WC9
6	G2312a	Bonnet Final	2.5-C1500-GLV-BW-HO/MO-WCC/WC9
7	G2312b	Bonnet Final	3-C1500-GLV-BW-HO-WC9
8	G2312c	Bonnet Final	4-C1500-GLV-BW-HO-WCB
9	G2312d	Bonnet Final	5-C1500-GLV-BW-GO-WC9
10	G2314	Disc Rough	2" to 8" Class 1500
11	G2316a	Disc Nut	2.5-C1500-GLV-BW-HO-WC9
12	G2316b	Disc Nut	3-C1500-GLV-BW-HO-WC9
13	G2316c	Disc Nut	4-C1500-GLV-BW-HO-WCB
14	G2316d	Disc Nut	5-C1500-GLV-BW-GO-WC9
15	G2318a	2.5-C1500-GLV - CASTLE NUT-G041	2.5-C1500-GLV-BW-MO-WCC
16	G2318b	3-C1500-GLV - CASTLE NUT-G033	3-C1500-GLV-BW-MO-WCC
17	G2318c	4-C1500-GNV - CASTLE NUT-G001	4-C1500-GNV-BW-MO-WCC
18	G2318d	5-C1500-GLV - CASTLE NUT-G003	5-C1500-GNV-BW-MO-WC9
19	G2348a	2.5-C1500-GNV - GUIDE-R001	2.5-C1500-GNV-BW-MO-WCC
20	G2348c	4-C1500-GNV - GUIDE-R017	4-C1500-GNV-BW-MO-WCC
21	G2348b	5-C1500-GLV - GUIDE-R065	5-C1500-GNV-BW-MO-WC9
22	G2328a	Gland	2.5-C1500-GLV-BW-HO-WC9
23	G2328b	Gland	3-C1500-GLV-BW-HO-WC9
24	G2328c	Gland	4-C1500-GLV-BW-HO-WCB
25	G2328d	Gland	5-C1500-GLV-BW-GO-WC9
26	G2329a	PIN/SET PIN/KNOCK PIN	2" to 8" Class 1500
27	G2329b	PIN/SET PIN/KNOCK PIN	2" to 8" Class 1500
28	G2329c	PIN/SET PIN/KNOCK PIN	2" to 8" Class 1500
29	G2327a	Yoke Stopper	2.5-C1500-GLV-BW-HO-WC9
30	G2327b	Yoke Stopper	3-C1500-GLV-BW-HO-WC9
31	G2326a	Stopper	2.5-C1500-GLV-BW-HO-WC9
32	G2326b	Stopper	4-C1500-GLV-BW-HO-WCB
33	G2324a	Eye Bolt	2.5/3-C1500-GLV/GNV-BW-WCC/WCB/WC9
34	G2324b	Eye Bolt	4-C1500-GLV-BW-HO-WCB
35	G2324c	Eye Bolt	5-C1500-GLV-BW-GO-WC9
36	G2320a	Handle boss	2.5-C1500-GLV-BW-HO-WC9
37	G2320b	Handle boss	4-C1500-GLV-BW-HO-WCB
38	G2330a	Bushing	2.5/3-C1500-GLV/GNV-BW-WCC/WCB/WC9
39	G2322	Yoke Bushing	2" to 8" Class 1500
40	G2330b	Bushing	4/5-C1500-GLV-BW-HO-WCB
41	G2317	Washer	2" to 8" Class 1500
42	G2321	Plate	2" to 8" Class 1500
43	G2349	Yoke Clamp	2" to 8" Class 1500
44	G2325b	Sunk Key	4-C1500-GLV-BW-HO-WCB
45	G2347	Eye Bolt Clamp	5-C1500-GNV-BW-MO-WC9
46	G2480	Retaining ring	5-C1500-GNV-BW-MO-WC9
47	G2494	INTERMEDIATE FL.-G090	3/4-C1500-GNV-BW-MO-WCB
48	G2313c	Body Rough	4-C1500-GLV-BW-HO-WCB
49	G2305	Body Machining	4-C1500-GLV-BW-WCB/WC9

TOA Valves - List of items in which additional vendors are required for job work

Annexure - I

S.No	Gr. No	Job/Component Description	Description of Valve/ Product (Used in)
50	G2325a	Sunk Key	2.5/3-C1500-GLV/GNV-BW-WCC/WCB/WC9
51	G2327c	Yoke Stopper	4-C1500-GLV-BW-HO-WCB
52	G2476	Grip	2.5-C1500-GNV-BW-HO-WCC
53	G2477	Nut	2.5-C1500-GNV-BW-HO-WCC
54	G2478	Bolt	2.5-C1500-GNV-BW-HO-WCC
55	G2479	Lock plate	2.5-C1500-GNV-BW-HO-WCC
56	G2481	Disc Final	3-C3500-GNV
57	G2306	Stem	2.5-C1500-GLV/GNV-HO/MO-WCC

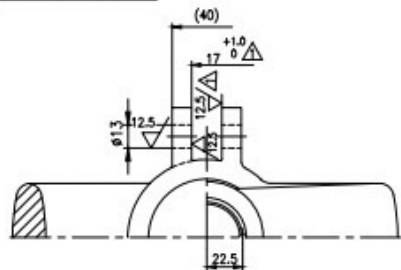
ALL DIMENSIONS ARE IN MILLIMETRES. FOR TOLERANCES OF UNTOLERANCED DIMENSIONS DURING MANUFACTURE REFER RELEVANT QCP / QP



12 $\nabla / \nabla^{12.5} \nabla^{3.2}$

#95-e7	-0.072
	-0.107

SECTION ABCD



NOTES:

- * 1. NI PLATING TO A THICKNESS OF 25 TO 35 MICRONS.
2. LATEST APPLICABLE QUALITY WORK INSTRUCTION SHALL BE FOLLOWED IN ALL RESPECTS.


02	2-V-G047-15154/3	A217 WC6, NT PRODUCT ATTEST	931121170000	20					
01	2-V-G045-15154/3	A216 WC6, AN PRODUCT ATTEST	931121180000	10					
S/N NO.	DRAWING NO.	MATL. SPECN.	COMP. CODE	SCRAP SORT					
No OFF	DESCRIPTION	MATL CODE	MATL SPECN	HEAT TREATMENT	SCRAP SORT	NET Wt (kg)	GROSS WT (kg)	DRAWING No	ITEM No

CAUTION: The information on this document is the property of BHARAT HEAVY ELECTRICALS LTD. It must not be used directly or indirectly in any way detrimental to the interest of the company.



REDRAWN WITH REV.1 ON 24.10.13

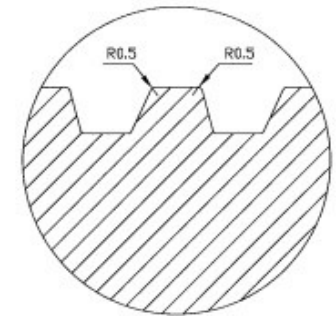
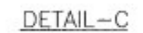
REV	DATE	ALTERED	CR
3	24.10.13	CHD & APPD SSK & KRS	



ZONE

+1.0 12.5 /
DIMENSION 17 0 &  INCLUDED

DCP No.801630

TYPE OF PRODUCT OR NAME OF CUSTOMER/PROJECT		 BHARAT HEAVY ELECTRICALS LTD., UNIT: HIGH PRESSURE BOILER PLANT, TIRUCHIRAPPALLI - 620014.		DRN CHD	NAME CHITRANJAN S.SATHEES	SIGN	DATE 24.10.13 24.10.13
365-120				APPO	K.RAJASEKARAN		24.10.13
DEPT VL		SCALE N T S	WEIGHT (KG.) 8.78	REFERENCE INFORMATIONS			
CODE 320				+			
TITLE YOKE 80/1500CLASS			CARD CODE U 01	DRAWING NO. 2-V-0000-1515			



1	2-V-R074-15707/1	OHTARON ,QT PRODUCT ATTEST		Ø50X630	931189650000		9.72	40
SL NO.	DRAWING NUMBER	MATERIAL SPECN.		SUGG. SIZE	COMP. CODE MATL. CODE		GROSS WT.(Kg)	SCRAP SORT
No	DESCRIPTION	MATL CODE	MATL SPECN	HEAT TREATMENT	SCRAP SORT	NET WT (kg)	GROSS WT (kg)	DRAWING No
TYPE OF PRODUCT OR NAME OF CUSTOMER/PROJECT								
TA RETRACED WITH REV.1 ON 24.12.03								
 BHARAT HEAVY ELECTRICALS LTD., UNIT: HIGH PRESSURE BOILER PLANT, TIRUCHIRAPALLI -620014.				DRN V.Bairavan CHD K.Rajasekar APPD M.Rajakumar	NAME SIGN	DATE 24.12.03 24.12.03 24.12.03	NO.OF VAR.	
DEPT VL		SCALE NTS	WEIGHT (KG).	REFERENCE INFORMATION				NO. OF ITEM
CODE 320			3.54					
TITLE STEM				CARD CODE U 01	DRAWING NO. 2-V-R074-15707			REV 1