

0,8 g

max. zulässige Transportbeschleunigung

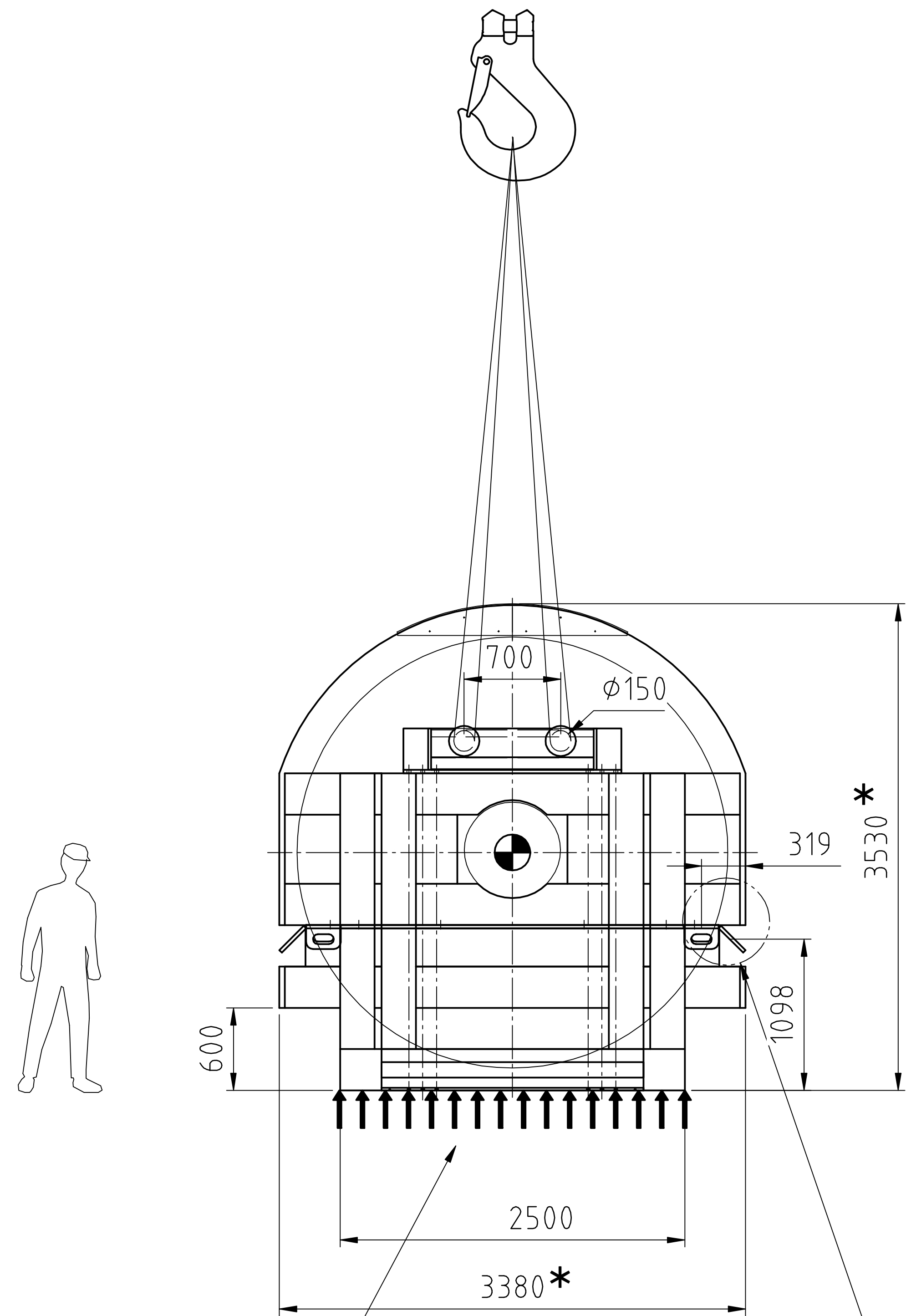
1 g

MAX. ALLOWED TRANSPORTATION ACCELERATION

\*  
DIMENSIONS CAN VARIATE UP TO 50mm BECAUSE OF  
INACCURACY WHILE LOADING AND PACKING  
Maße können bis zu 50mm variieren aufgrund von  
Ungenauigkeiten beim Verladen und Verpacken

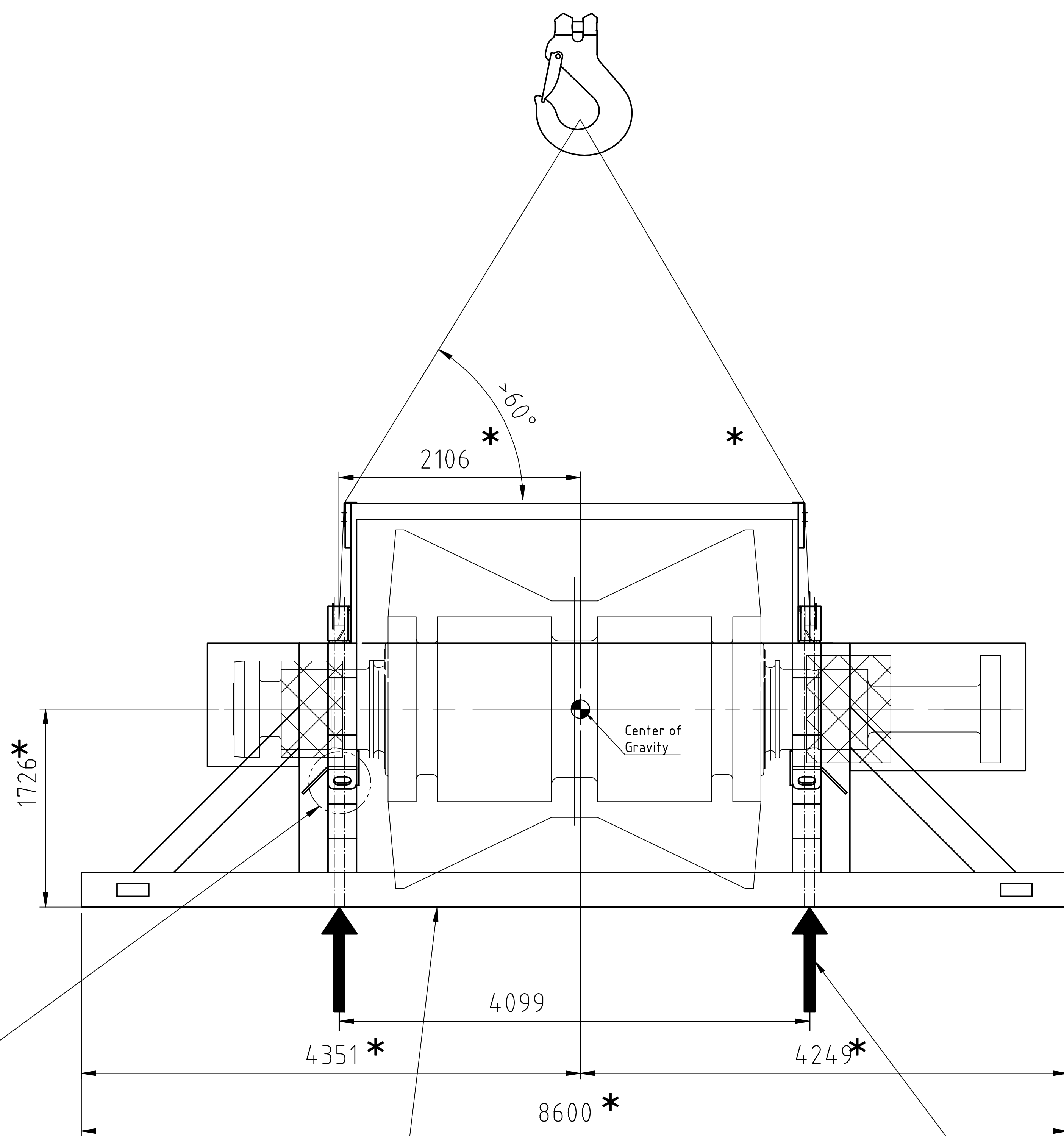
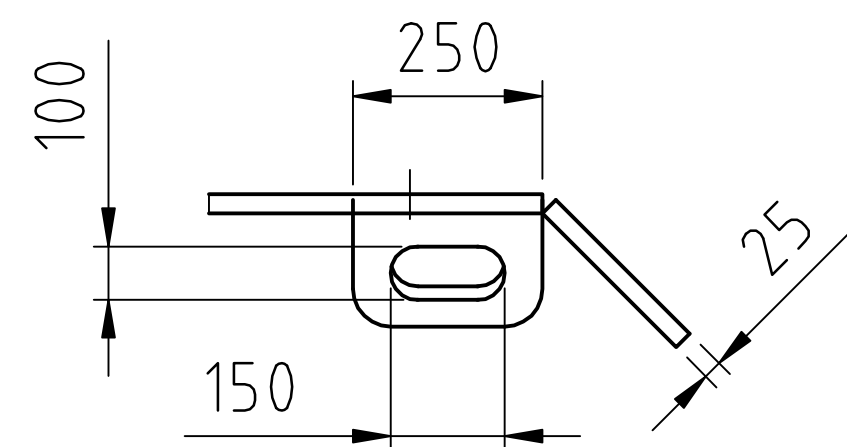
PACKING AND DISPATCH GUIDELINES ACC. TO TLV 0130  
Versand- und Verpackungsrichtlinie nach TLV 0130

NETWEIGHT : 58 Mg  
GROSSWEIGHT: 65,5 Mg



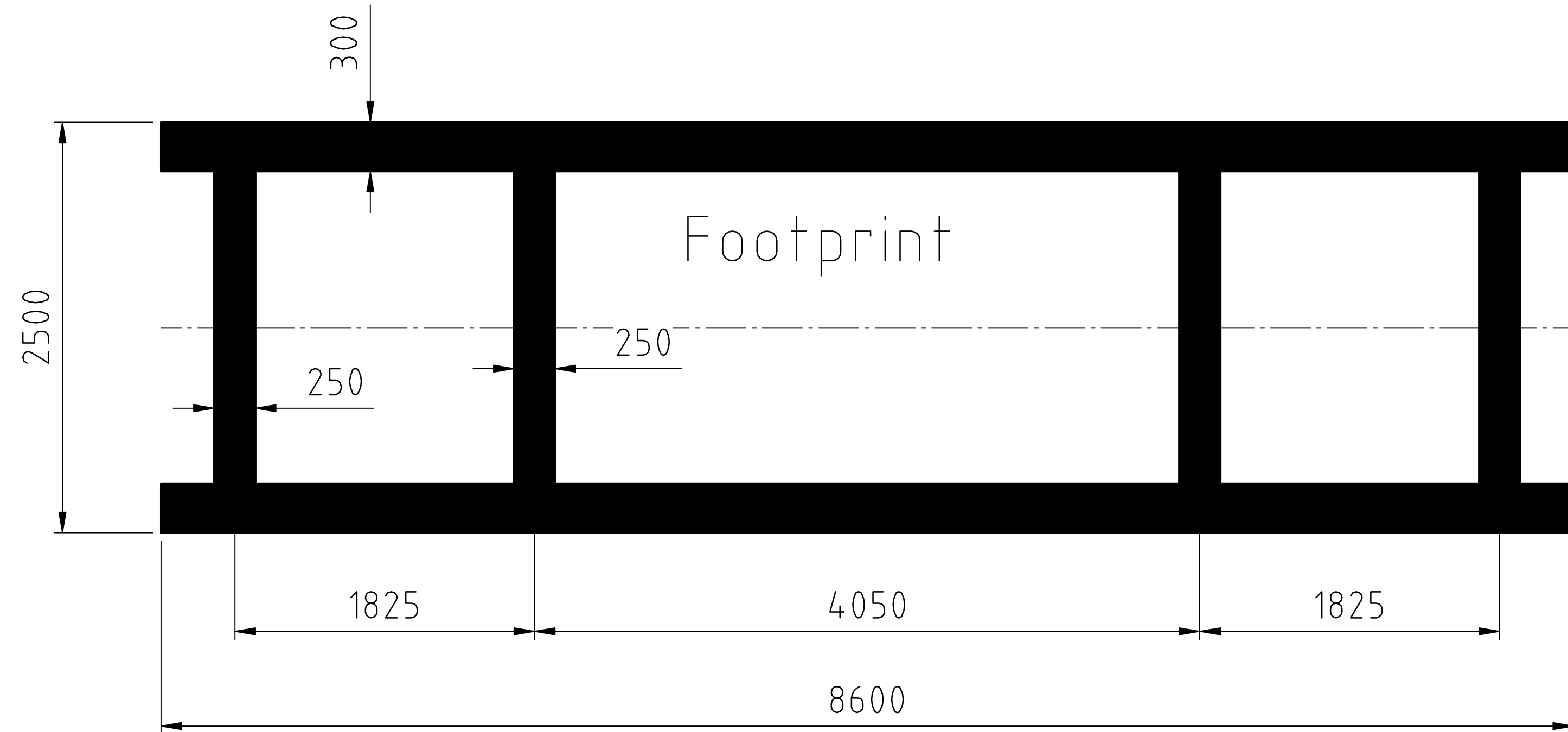
Querträger erforderlich zum  
Abstellen auf Böcken  
CROSSBEAMS NEEDED TO PLACE  
ON STANDS

Zurripunkt  
LASHING POINT  
max.Load 100kN



ALWAYS USE ANTI SKID PADS BELOW FRAME  
FRICTION FACTOR  $\mu \geq 0,6$   
Antirutschmatten unter Auflagefläche  
benutzen  $\mu \geq 0,6$

POSITION OF CROSSBEAM  
CONSIDER SUFFICIENT STRENGTH  
Position Querträger  
ausreichend Tragfähigkeit  
berücksichtigen



Udangudi, 2x660MW SUPER CRITICAL, SST5-6000 SC		
OWNER	TAMILNADU GENERATION AND DISTRIBUTION CORPORATION LIMITED	
CONTRACTOR	BHARAT HEAVY ELECTRICALS LIMITED RANIPUR, HARIDWAR, INDIA	
UNID	513699326	SI No 153
IN1112		&WTC020 310510
PKZ	KKS / Contents Code	DCC / UA Reg No
TECHNOLOGY NOT SPECIFIED IN THE CCL, AL OR BCL TECHNICAL CLASSIFICATION: BCH:REASER AL:W BCL:N US-Content: THIS DOCUMENT IS SUBJECT TO US AND/OR NATIONAL EXPORT REGULATIONS. UNAUTHORIZED DIVERSION IS PROHIBITED. IN CASES OF DOUBT CONTACT YOUR EXPORT COMPLIANCE DEPARTMENT.		
REVISION: SEE SEPARATE CID DOCUMENT		
Siemens AG Energy Sector		
WEIGHT:	SCALE: 1:1	SPEC.: KUN 35100 DCC:
ORIGINATED: 2015-09-25 Hoppe	TITLE: Transportzeichnung Rotor shipping dwg rotor	
CHECKED: 2015-09-25 Dag	LP steam turbine rotor	
RELEASED: 2015-09-25 Hoppe	LANG.-DRAWING NO. / VALUE DPPPG-70105339 A-000660-14.000010	
COPYRIGHT (C) Siemens AG 2010 ALL RIGHTS RESERVED	REV.: SHEET: B 1 / 1	