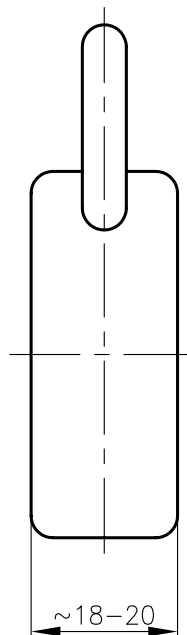
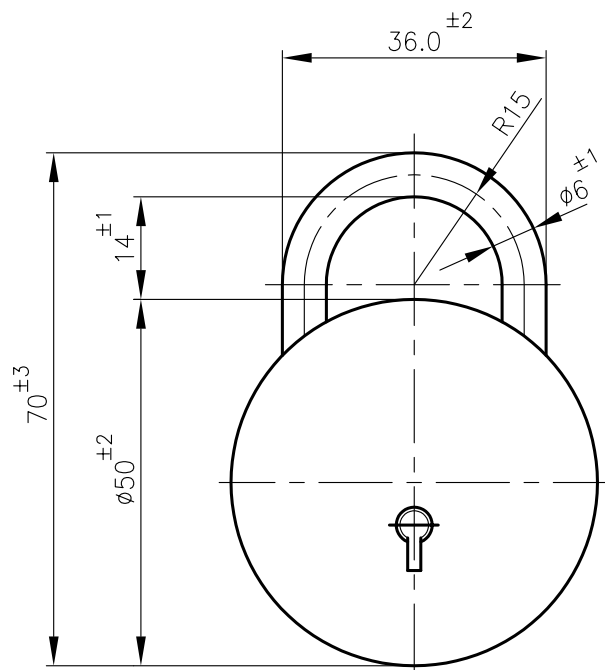


FOR TOLERANCES OF UNTOLERANCED DIMENSIONS

ALL DIMENSIONS ARE IN MILLIMETRES.  
DURING MANUFACTURE REFER RELEVANT QCP/QP

REV 03	DATE 31.03.08	ALTERED M.SRINIVASAN CHD & APPD P.BOOMINATHAN
-----------	------------------	---



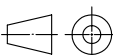
DCP:800814

DRAWING CONVERTED INTO  
AUTOCAD.**NOTES:**

- PAD LOCK SHOWN IN LOCKED POSITION.
- TEST AND GUARANTEE CERTIFICATE NOT REQD.  
INSPECTION: TO CHECK THE DIMENSIONS AND TO CHECK WHETHER IT CLOSSES & OPENS FREELY BY BOTH KEYS.

**PAD LOCK SPECN.**

6 LEVERS  
RIVETLESS  
MATERIAL:- BODY-BRASS  
LEVER-BRASS  
KEY -BRASS  
No. OFF KEYS REQUIRED:- 2 NOS.

—	—	—	—	—	—	—	—	—	—	
NO OFF	DESCRIPTION	MATL CODE	MATL SPECN	HEAT TREATMENT	SCRAP SORT	NET WT (kg)	GROSS WT (kg)	DRAWING No	ITEM No	
<div> 365-122</div> <div>BHARAT HEAVY ELECTRICALS LTD., UNIT: HIGH PRESSURE BOILER PLANT. TIRUCHIRAPALLI 620014.</div>					DRN	NAME T.R.RAMAMURTHY	SIGN	DATE 23.10.76	NO.OF VAR	
					CHD	M.D.MURTHY		23.10.76		
					APPD	A.V.NATHAN		23.10.76		
					REFERENCE INFORMATION					
DEPT VL			SCALE	WEIGHT (KG).	COMPONENT CODE:22 065 051 0000				NO. OF ITEMS	
CODE 320			NTS	0.30	CAD:F409856					
TITLE					CARD CODE	DRAWING NO.				REV
PAD LOCK					U 01	4-V-S528-09856				03