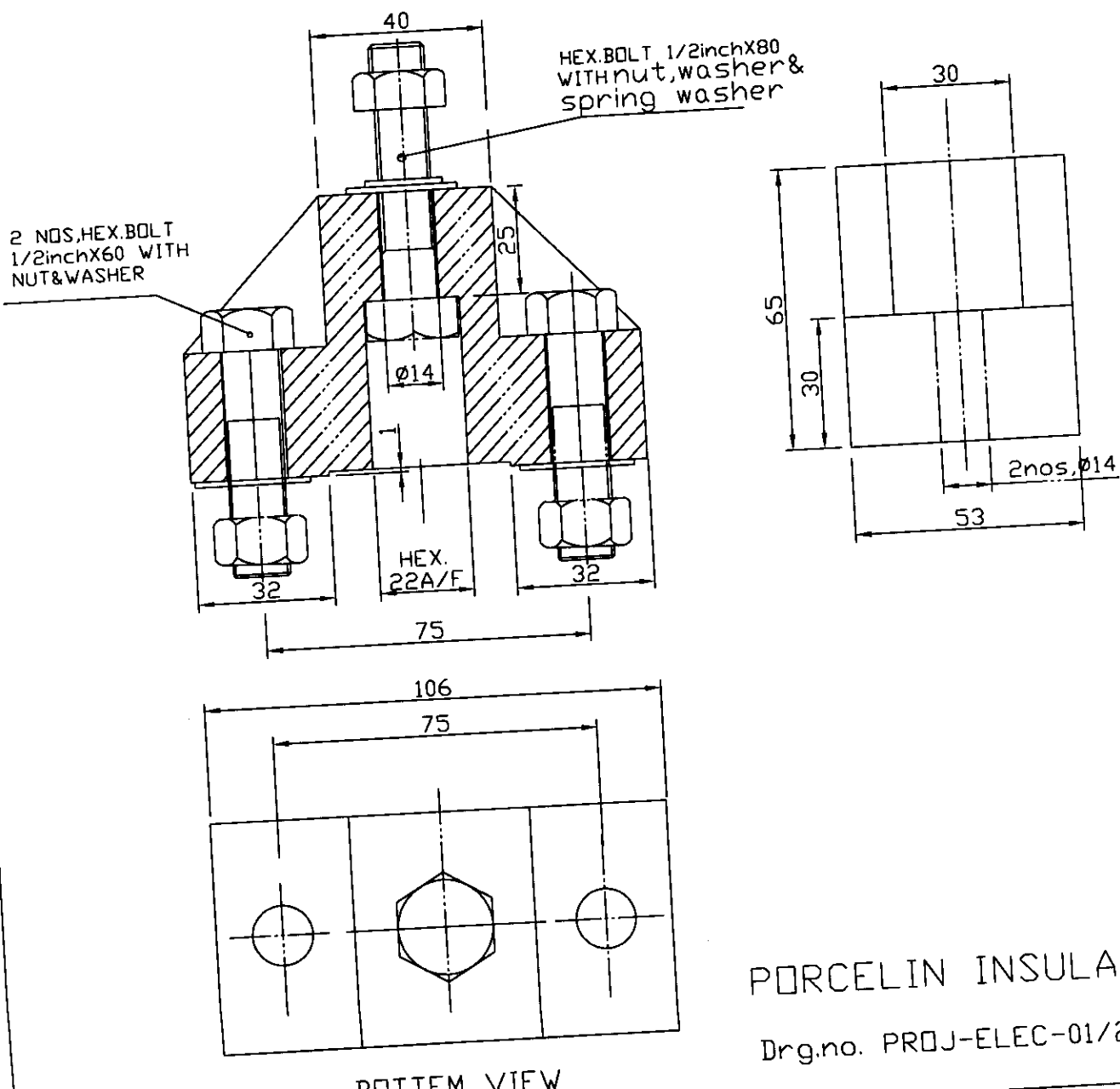


Specification for Support Insulator

Porcelain support insulator 1.1 KV Gr.(as shown in Diagram) of size 110x65x55 mm with stepped base having 3 Nos.Ø14 mm holes & center hole will have hexagonal groove from bottom 40 mm depth for 1/2inch bolt. Strength of insulator should be sufficient to take load of 65x8 mm MS angle run continuously with supports at an interval of 1.5 Mtrs. The porcelain support insulator should conform to relevant IS specifications.

Each Porcelain support insulator should be supplied along with hardware Galvanised bolts of 1/2inchx60-2 Nos.; 1/2inchx80 - 1 No.; 3 Spring washers, 1 Flat washer and 3 Nos.1/2inch Hex.Nuts.

Purpose: To support the fabricated MS angle type dsl i.e. busbars for outdoor Gantry Cranes.



PORCELIN INSULATOR

Drg.no. PROJ-ELEC-01/2011