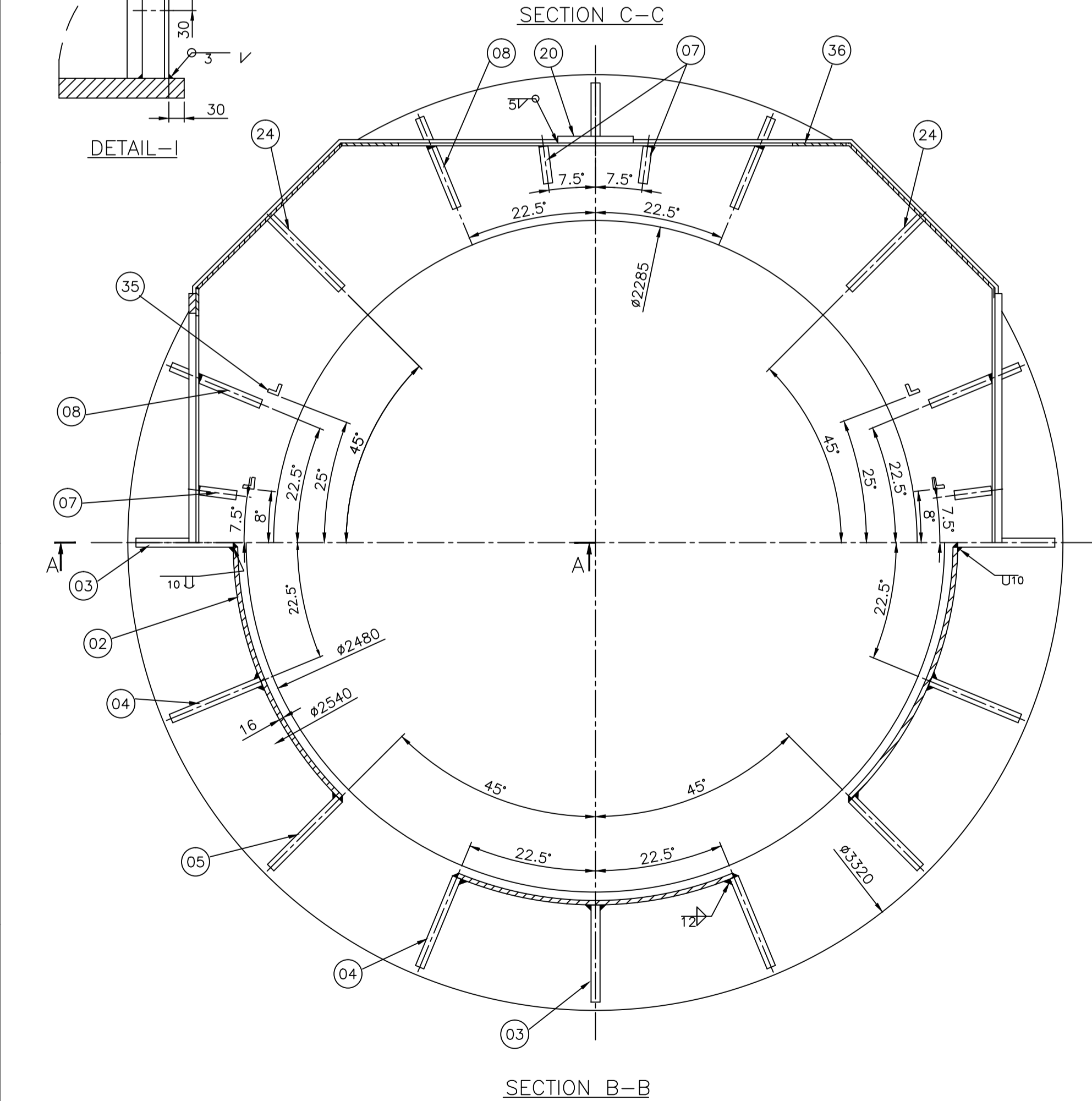
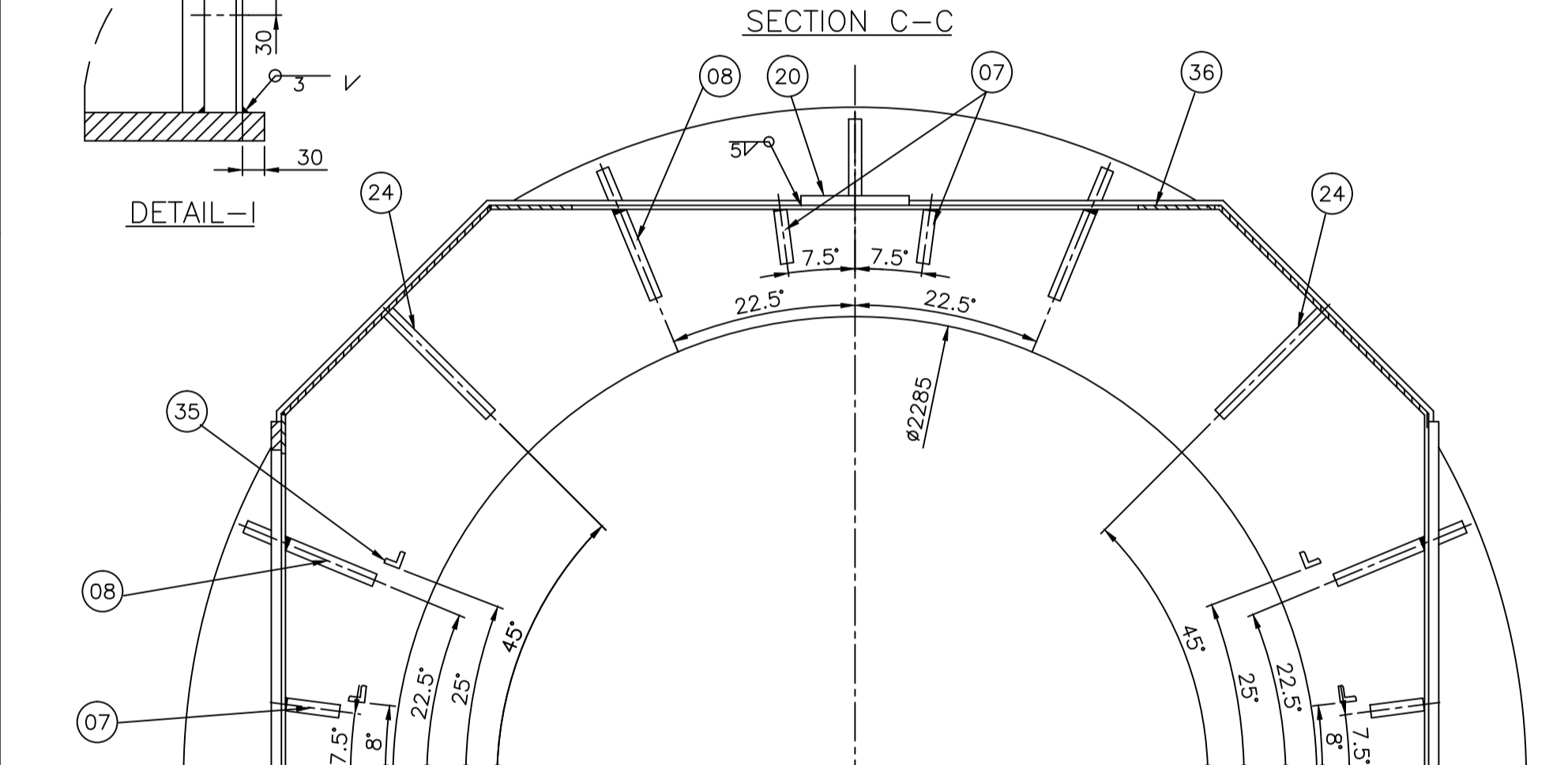


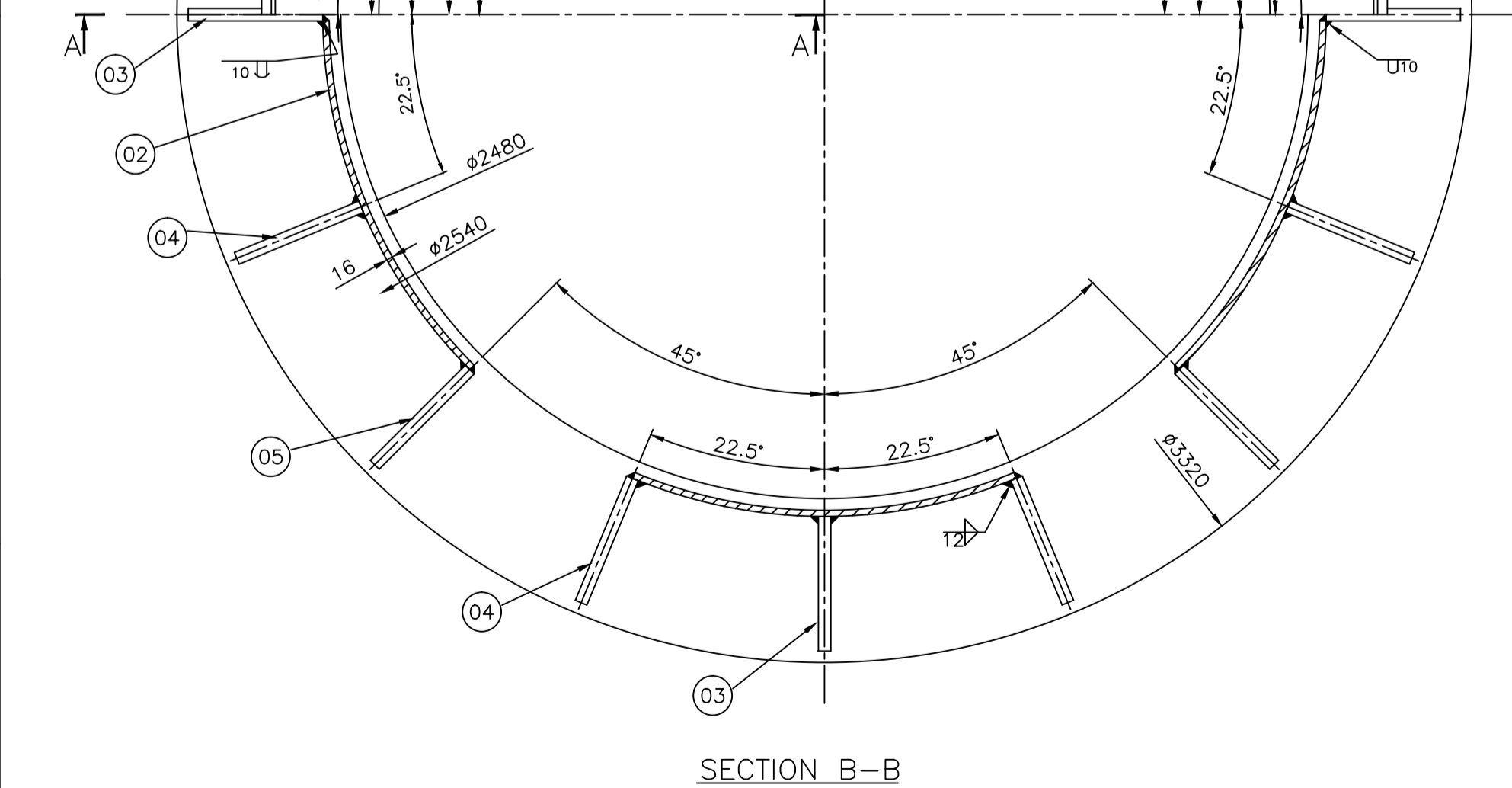
SECTION A-A



SECTION B-B



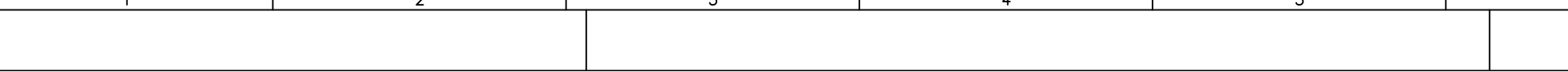
SECTION C-C



SECTION D-D



SECTION E-E



SECTION F-F



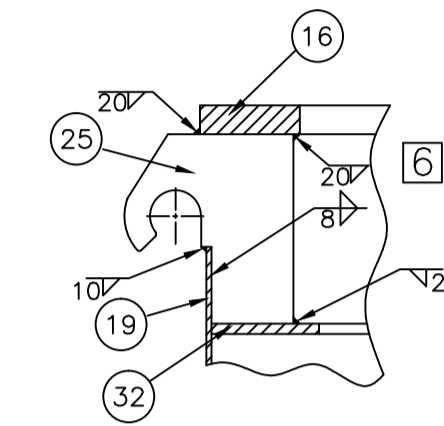
SECTION G-G

SECTION H-H

SECTION M-M

TECHNICAL REQUIREMENTS:-

1. ALL EXTERNAL WELDS TO BE 8 mm. CONTINUOUS UNLESS OTHERWISE STATED. ALL INTERNAL WELDS 6 mm CONTINUOUS UNLESS OTHERWISE STATED.
2. WHERE EVER CHAMFERS ARE REQUIRED IN WELDABLE ITEMS, SUITABLE CHAMFERS CAN BE PROVIDED BY FBM.
3. ALL ITEMS TO BE FLAME CUT ON N.C. M/CS.
4. FLATNESS OF SURFACES A, B, C, D SHOULD BE MAINTAINED WITHIN 3 mm MAXIMUM.
5. FOR WELDING REFER WELDING INSTRUCTION 052-6152 PART 10.
6. 20 mm WELD TO BE D.P. TESTED, AS PER CORP. STD. AA0622101 GRADE III
7. **IMPORTANT:-** STATOR TO BE SHOT BLASTED BRFORE PRIMER PAINTING TO AM54173.
8. DIMENSION WITHIN BRACKET [] ARE AFTER MACHINING.



DETAIL-I

QTY	ITEM NO.	DESCRIPTION	UNIT	WT.	ZONE
080	040	WASHER MCD 8.4-ST			
080	039	SCREW HEX. M8x16			
004	GES. NO. 404582438	038 COVER	34021042056	00	18.0
004	GES. NO. 404587869 (FOR ITEM 38)	037 FLANGE	34027140447	00	8.0
001	036	COVER	14037142002	31	240
008	035	ANGLE	14037142002	08	5
001	034	COVER	14037142002	30	116
001	033	COVER	14037142002	11	116
001	032	STAND	14037142002	07	485
	031				
	030				
008	029	RIB	14037142002	024	18.7
008	028	RIB	14037142002	023	9.6
	027				
	026				
004	025	HOOK	14037142002	09	56
004	024	RIB 32TK.	14037142002	15	62.6
008	023	RIB 25TK.	14037142002	16	39.2
004	022	RIB 32TK.	14037142002	14	59.6
004	021	RIB 32TK.	14037142002	13	36.3
02	1 FOR MTB 1 FOR NTB	020 FLANGE	44024942035	01	31.00
002	019	COVER	14037142002	10	116
001	018	COVER	14037142002	02	237
002	017	COVER	14037142002	01	250
001	016	STAND	14037142002	06	1176
002	FOR COOLER	015 FLANGE	34037140018	00	131
008	014	RIB	14037142002	022	22.1
008	013	RIB	14037142002	021	12.0
001	012	STAND	14037142002	029	776
008	011	RIB	14037142002	020	47.0
008	010	RIB	14037142002	019	31.0
001	009	STAND	14037142002	005	868
008	008	RIB	14037142002	018	23.6
008	007	RIB	14037142002	017	15.3
001	006	STAND	14037142002	004	1482
004	005	RIB	14037142002	027	26.4
008	004	RIB	14037142002	025	36.3
004	003	RIB	14037142002	026	14.2
006	002	SEGMENT	14037142002	012	36
001	001	BASE STAND	14037142002	003	1683

REV	DATE	ALTERED	BY	DATE	ALTERED	BY	DATE	ALTERED	BY
01	22.04.17	CHECKED			CHECKED				
		APPROVED			APPROVED				

ADDITION INFORMATION	W.O. 44179425-11/21/31/41	TYPE OF PRODUCT OR NAME OF CUSTOMER/PROJECT	1 DM 5135 M/S MEIL-PATTISAM LIS
DISTRIBUTION OF PRINT	OC - 1 TEX - 4 FMM - 4	DATE	20.4.15
REV	DATE	ALTERED	BY
01	22.04.17	CHECKED	
		APPROVED	

THE INFORMATION ON THIS DOCUMENT IS THE PROPERTY OF BHARAT HEAVY ELECTRICALS LIMITED. IT MUST NOT BE USED DIRECTLY OR INDIRECTLY IN ANY WAY DETRIMENTAL TO THE INTEREST OF THE COMPANY.

INVENTORY NO. 14037140024 (40458919)

LP/MBH/14037140024