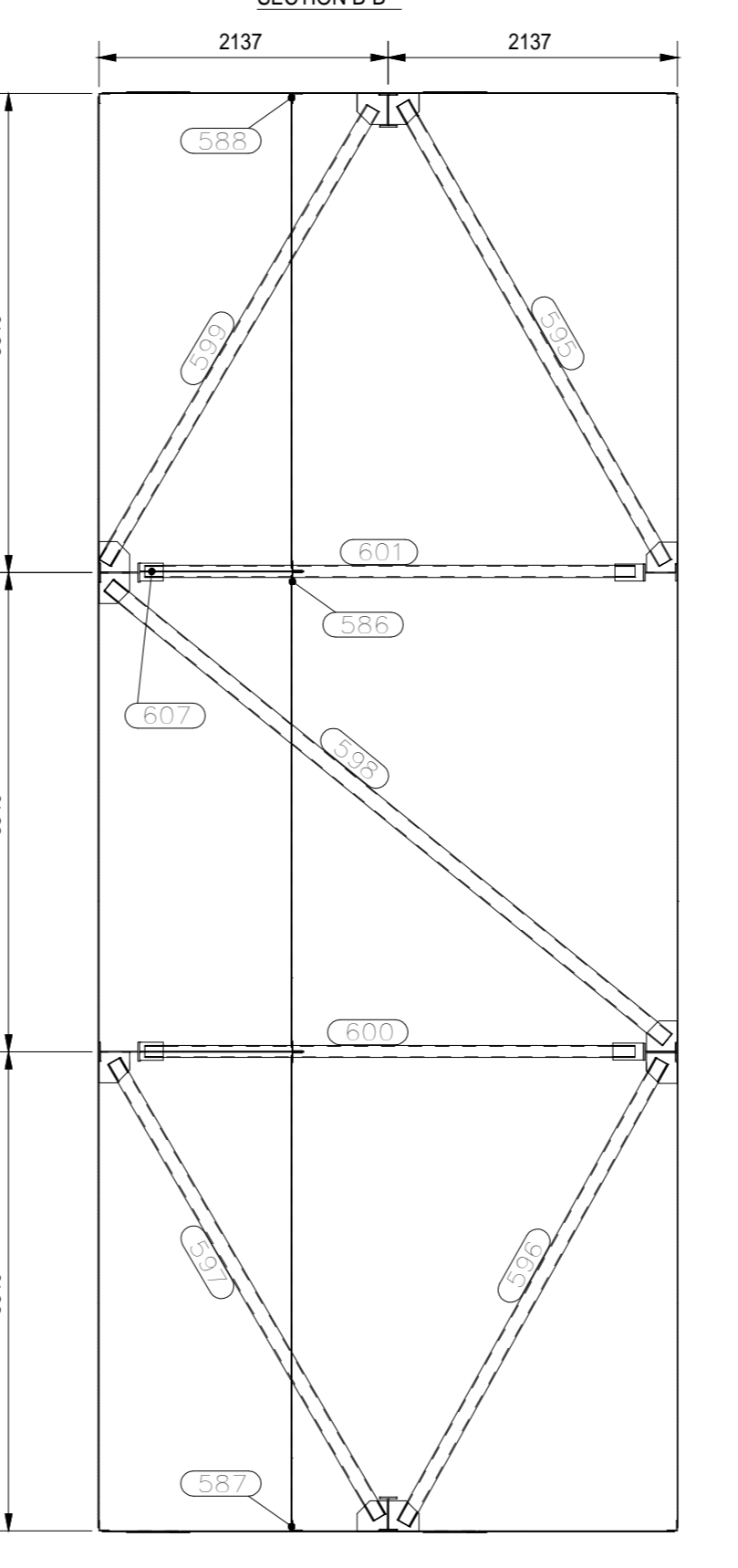
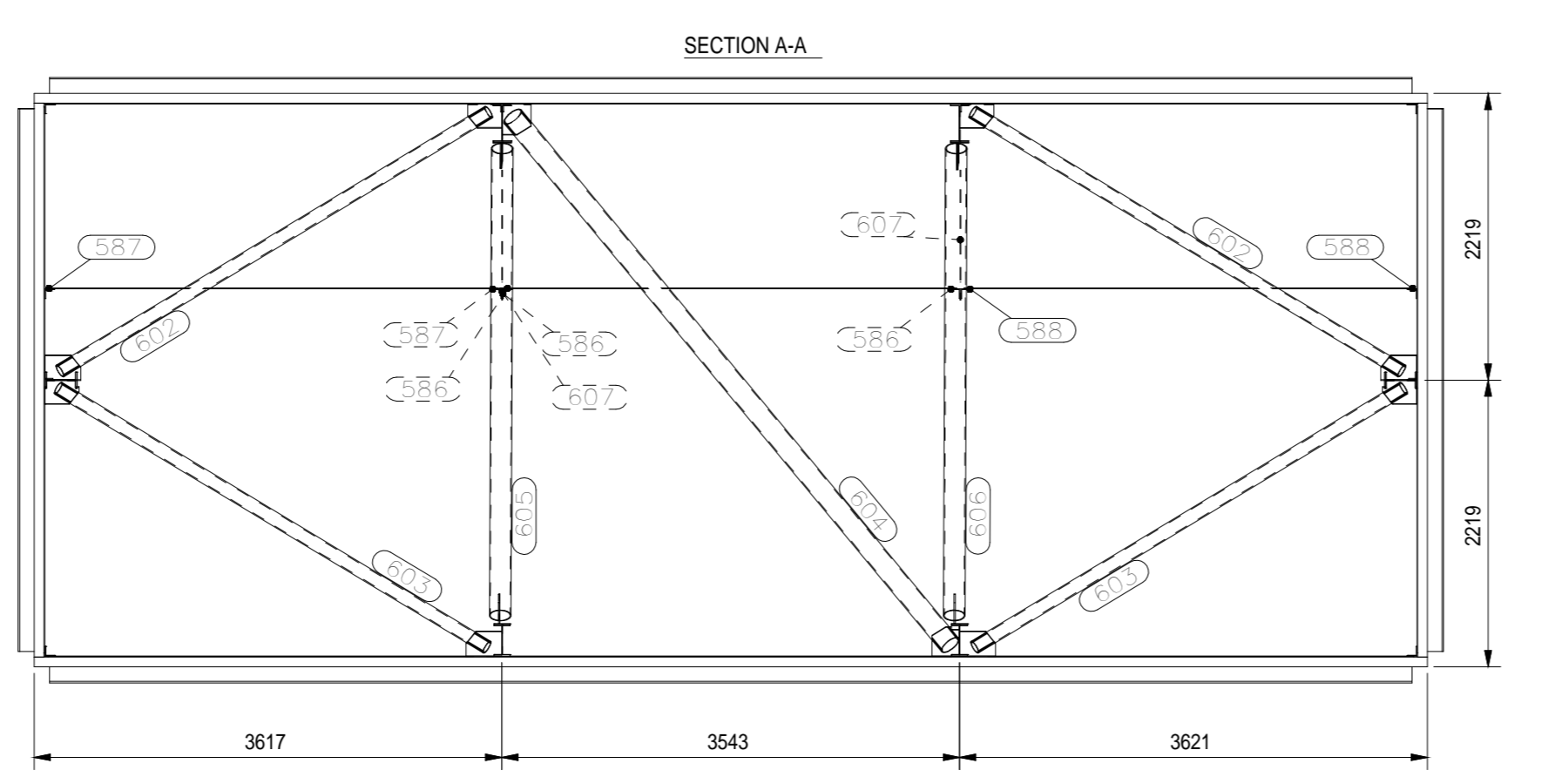
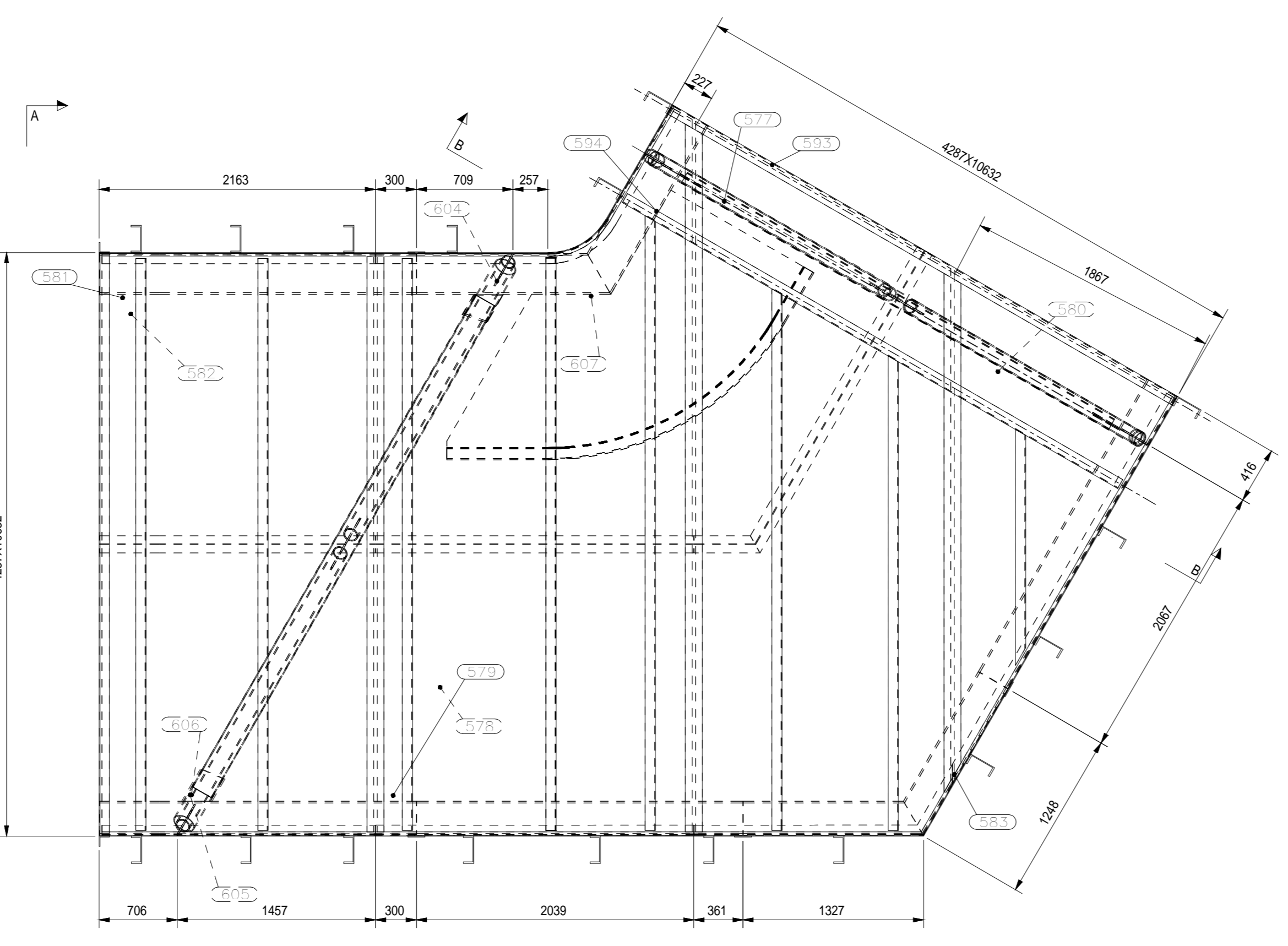
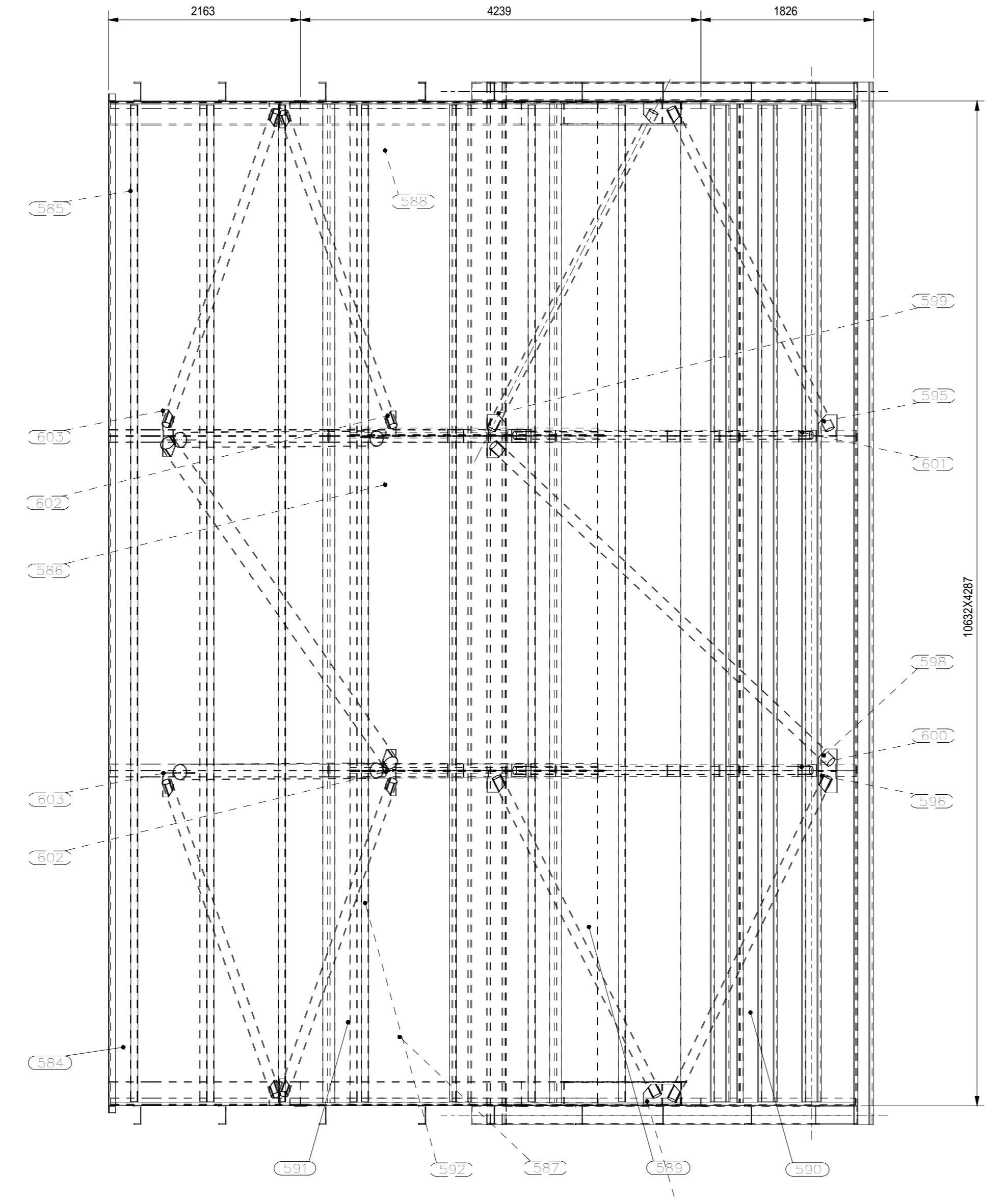
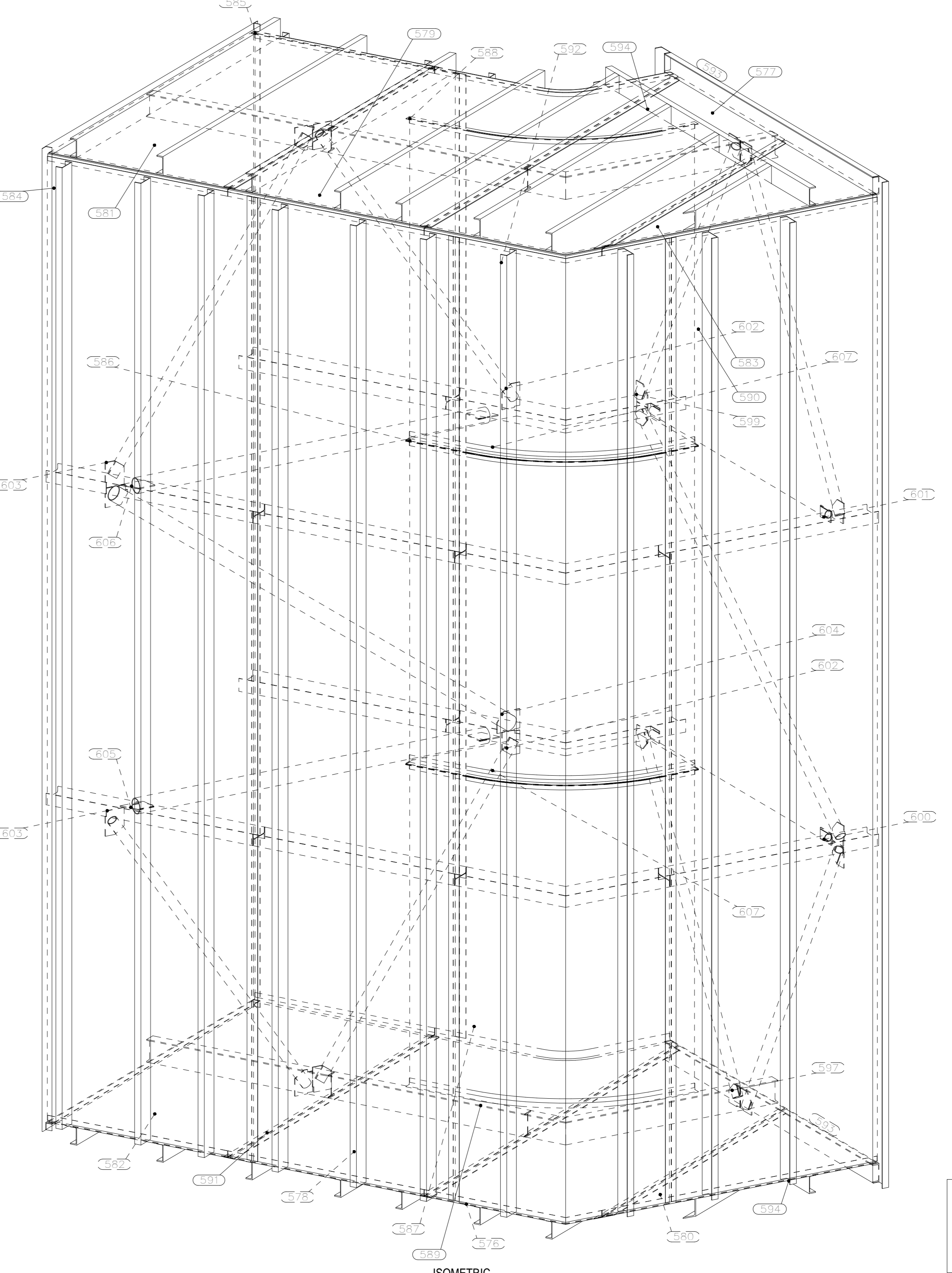


DU NO.	ITEM DESCRIPTION	ITEM QTY.
PL19	PLT 6;1875x320	1
A.283	ISA75X75X6; 2177	1
B.149	ISM250; 485	1
B.151	ISM250; 2527	1
C.331	SMC200; 3979	1
C.332	SMC200; 3485	1
F.67	PLT 6;125x3813	1
PL19	PLT 6;1875x320	1
A.284	ISA75X75X6; 2177	1
B.149	ISM250; 485	1
B.151	ISM250; 2527	1
C.331	SMC200; 3979	1
C.332	SMC200; 3485	1
F.67	PLT 6;125x3813	1
PL19	PLT 6;2314x5310	1
A.285	ISA75X75X6; 2737	1
A.287	ISA75X75X6; 2336	1
B.155	ISM250; 2336	1
C.326	SMC200; 4201	1
C.328	SMC200; 4202	1
C.330	SMC200; 4516	1
F.66	PLT 6;125x5200	1
PL19	PLT 6;2314x5310	1
A.286	ISA75X75X6; 2737	1
A.287	ISA75X75X6; 2336	1
B.155	ISM250; 2336	1
C.326	SMC200; 4201	1
C.329	SMC200; 4207	1
C.330	SMC200; 4516	1
F.66	PLT 6;125x5200	1
PL19	PLT 6;1850x3208	1
A.288	ISA75X75X6; 3273	1
C.333	SMC200; 1734	1
PL19	PLT 6;2130x4225	1
A.289	ISA75X75X6; 2141	2
A.291	ISA75X75X6; 4287	1
B.154	ISM250; 2160	1
C.326	SMC200; 4201	2
F.65	PLT 6;125x4225	1
PL19	PLT 6;2130x4225	1
A.289	ISA75X75X6; 2141	2
A.291	ISA75X75X6; 4287	1
B.154	ISM250; 2160	1
C.326	SMC200; 4201	2
F.65	PLT 6;125x4225	1
PL19	PLT 6;1850x3208	1
A.290	ISA75X75X6; 3273	1
C.333	SMC200; 1734	1
PL19	PLT 6;2130x4225	1
A.292	ISA75X75X6; 10782	1
B.153	ISM250; 2460	2
C.327	SMC200; 10546	3
F.12	PLT 6;125x10570	1
PL30	PLT 6;2450x10570	1
A.292	ISA75X75X6; 10782	1
B.231	ISM300; 2460	2
C.327	SMC200; 10546	3
F.12	PLT 6;125x10570	1
PL30	PLT 6;3184x3486	1
A.293	ISA75X75X6; 3184	1
A.294	ISA75X75X6; 3184	1
A.294	ISA75X75X6; 3184	1
PL30	PLT 6;3184x3486	1
A.293	ISA75X75X6; 3184	1
A.294	ISA75X75X6; 3184	1
PL30	PLT 6;2542x10570	2
B.150	ISM250; 1322	3
B.157	ISM250; 1243	2
C.327	SMC200; 10546	1
F.12	PLT 6;125x10570	1
PL30	PLT 6;2450x10570	1
B.152	ISM250; 2479	2
C.327	SMC200; 10546	2
C.334	SMC200; 11032	1
PL30	PLT 6;2375x10570	1
B.156	ISM250; 2397	3
C.327	SMC200; 10546	3
F.12	PLT 6;125x10570	1
PL30	PLT 6;2426x10570	1
B.229	ISM300; 1427	2

B.230	ISM300; 1430	2
C.327	SMC200; 10546	2
C.334	SMC200; 11032	1
DTY-2	WT/DU-95.91	
C.325	SMC200; 4287	1
DTY-2	WT/DU-93.99	
C.326	SMC200; 4201	1
DTY-1	WT/DU-82.95	
GP5.3	PLT 10;225x229	1
PL19	PLT 6;1875x320	1
T.33	PIPE108*8; 3910	1
DTY-1	WT/DU-82.83	
GP5.3	PLT 10;225x229	1
GP5.3	PLT 10;225x229	1
T.34	PIPE108*8; 3912	1
DTY-1	WT/DU-82.62	
GP5.3	PLT 10;225x229	1
GP5.3	PLT 10;225x229	1
T.35	PIPE108*8; 3901	1
DTY-1	WT/DU-91.25	
GP5.3	PLT 10;225x229	1
GP5.3	PLT 10;225x229	1
T.55	PIPE114.3*6.02; 5328	1
DTY-1	WT/DU-82.76	
T.32	PIPE108*8; 3898	1
GP5.3	PLT 10;225x229	2
DTY-1	WT/DU-43.66	
GP11	PLT 10;125x225	1
GP12	PLT 10;133x175	1
T.158	PIPE88.9*5.49; 3624	1
DTY-1	WT/DU-43.54	
GP11	PLT 10;125x211	1
GP12	PLT 10;133x175	1
T.157	PIPE88.9*5.49; 3624	1
DTY-2	WT/DU-86.51	
GP14	PLT 10;210x266	1
GP14	PLT 10;222x275	1
T.45	PIPE108*8; 4045	1
DTY-1	WT/DU-170.22	
GP14	PLT 10;223x270	1
GP14	PLT 10;210x262	1
T.48	PIPE168.3*7.11; 5811	1
DTY-1	WT/DU-122.38	
PL14	PLT 10;185x296	1
PL14	PLT 10;185x267	1
T.164	PIPE168.3*7.11; 4170	1
DTY-1	WT/DU-122.54	
PL14	PLT 10;185x296	1
PL14	PLT 10;185x267	1
T.165	PIPE168.3*7.11; 4170	1
DTY-2	WT/DU-133.31	
PL198	PLT 6;1981	1



FLANGE DETAILS										
FLANGE NO.	REF	W	S	E	F	D	X	A	B	N
1	REF110	4287	333	2	1828	10632	597	5	4570	38



PART MARK LEGEND	
XXXX	XXXX
NEAR SIDE	FAR SIDE

SUMMARY OF STEEL		
SR. NO.	DESCRIPTION	TOTAL WT.
1	ISA75X75X6	536.04
2	ISM250	1300.97
3	ISM300	489.98
4	SMC200	5778.20
5	PIPE88.9*5.49	79.26
6	PIPE108*8	614.65
7	PIPE114.3*6.02	83.99
8	PIPE168.3*7.11	394.61
9	PLT 6 THK	12447.37
10	PLT 10 THK	98.04
TOTAL IN KGS.		21823.12

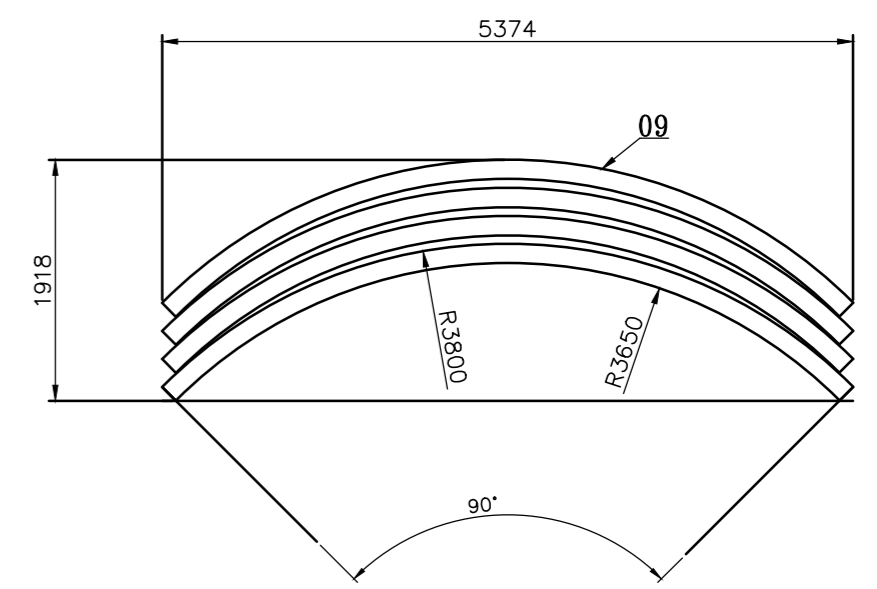
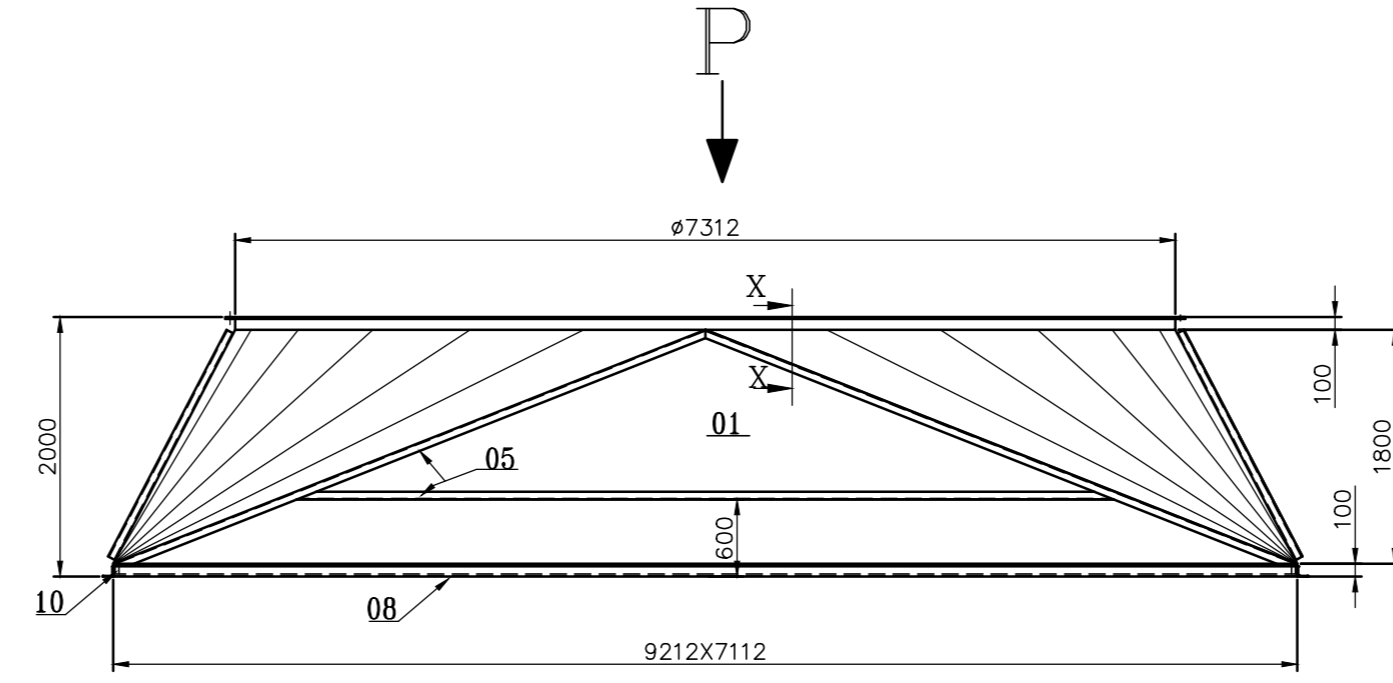
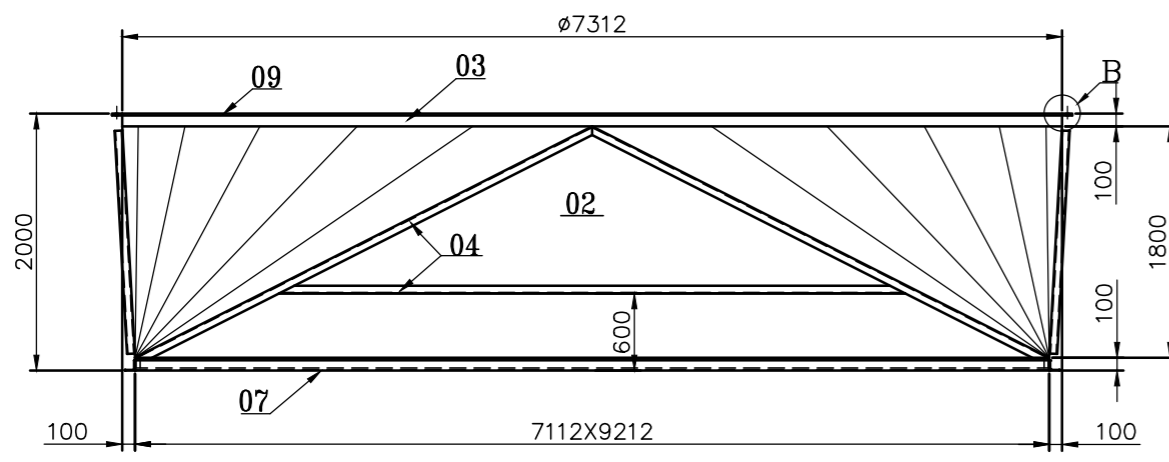
NOTES:

01. FOR GENERAL NOTES REFER PAGE NO.41 (REF.41) OF DUCT CONSTRUCTION MANUAL REF. 121 FOR CONSTRUCTION DETAIL

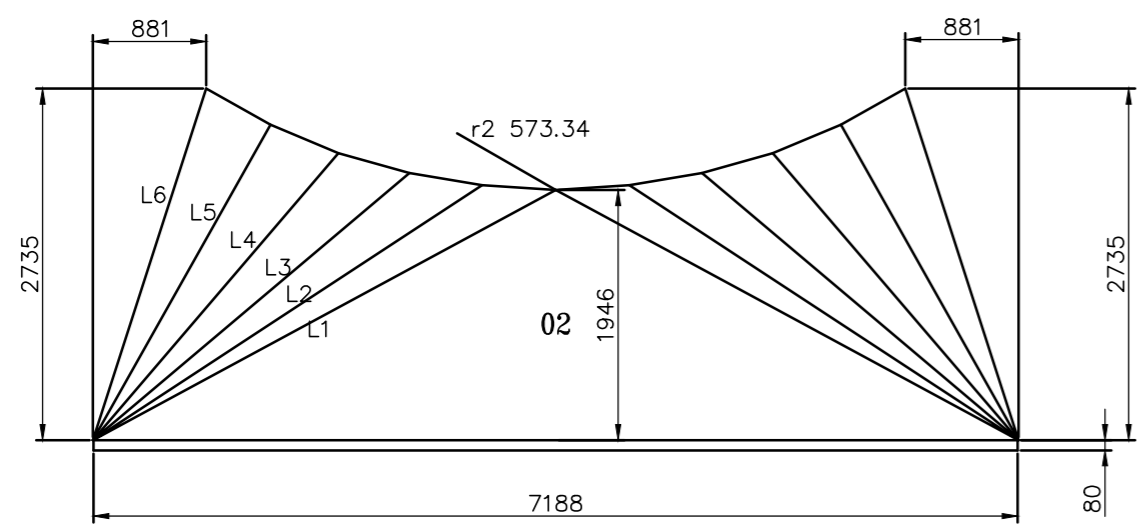
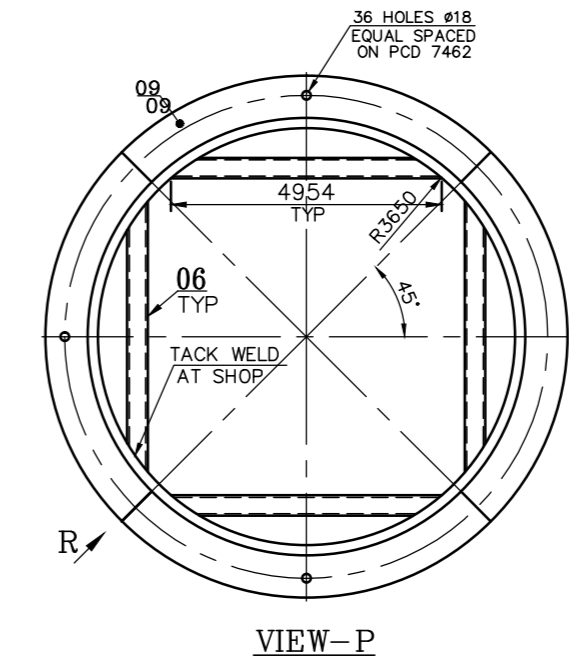
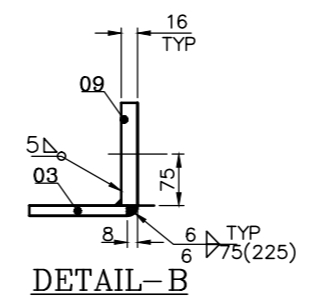
<p>CAUTION: The information on this document is the property of Bharat Trilochirapalli. It is to be used directly or indirectly in any form without the consent of the company.</p>	TYPE OF PRODUCT OR NAME OF CUSTOMER/PROJECT Bharat Heavy Electricals Ltd. UNIT: HIGH PRESSURE BOILER PLANT TRILUCHIRAPALLI - 520014		DSN NAME BALA HSP DATE 28.06.2016
	REF TO ASSY / OLD DWG 21823.12	SCALE NTS	SIGNATURE DATE 28.06.2016
	TITLE BEND DUCT(DU:576-607)	DRAWING NO : 0-48-462-36461	REV

DRAWING NO: 2-48-492-54721

NOTE: 01. ITEM NO.09(QTY 04) ARE TO BE CUMULATIVELY CUT FROM ONE PLATE TO AVOID WASTAGE.
FOR TOLERANCES OF UNTOLERANCED DIMENSIONS DURING MANUFACTURE REFER PLANT STD. NO TP 023 0299



CUTTING PLAN FOR ITEM NO-09
SEE NOTE:01

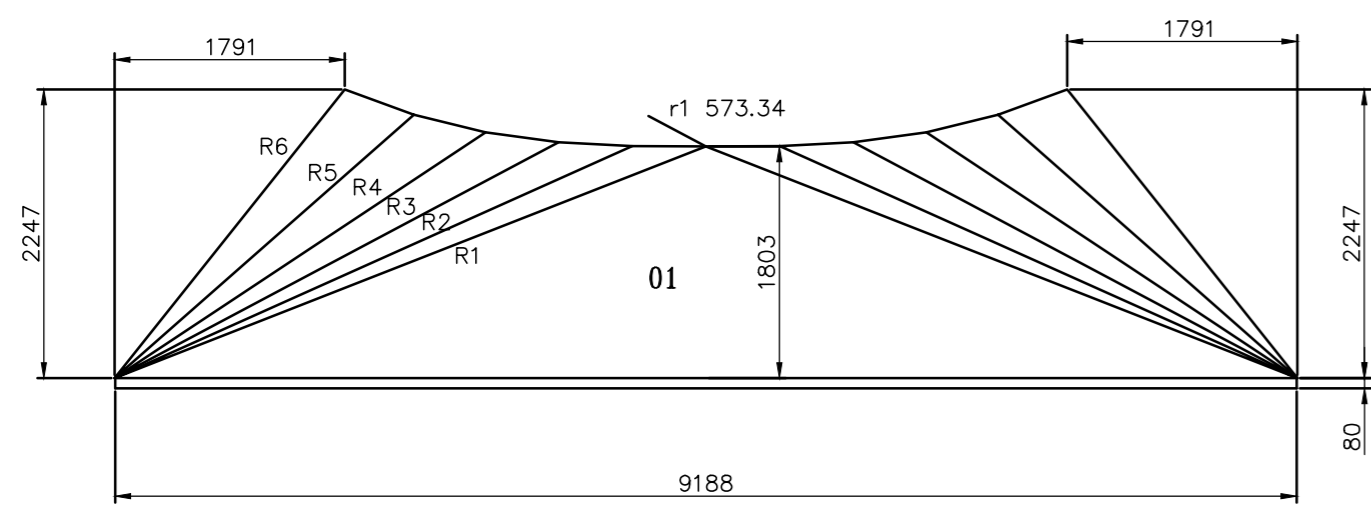
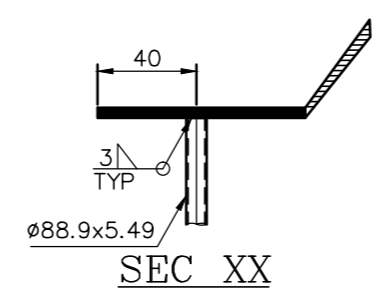


REF	
L1	4092.06
L2	3620.00
L3	3221.85
L4	2939.36
L5	2815.26
L6	2873.27

FLANGE DETAILS										
FLANGE NO.	REF	W	S	E	F	D	X	A	B	N
FL1	REF109	9212	801	4	3656	7112	665	3	2742	40

DESPATCH TABLE

SL. NO.	DESCRIPTION	DU NO.	NO. OFF	ITEM NO. NO.OFF																
1	TRANSITION WALL	250	2	01	03	05	06	08	09	10										
1	TRANSITION WALL	251	2	02	03	04	06	07	09											



REF	
R1	4940.65
R2	4413.16
R3	3911.72
R4	3462.59
R5	3101.85
R6	2873.27

VARIANT NUMBER	ITEM NUMBER	DESCRIPTION	STD	DRAWING NUMBER	ITEM NO	MATERIAL CODE	UNIT	UNIT WEIGHT	ZONE
	10	ISA 75X75X6 80				150130050000		0.544	
	09	PLATE 16 1918X5374				IS2062Fe410A		87.550	
	08	ISA 75X75X6 9212				IS2062E250A		62.610	
	07	ISA 75X75X6 7312				150130050000		49.720	
	06	TUBE 88.9X5.49 4954 C.T.S				IS2062Fe410A		2	
	05	SMC 150 17000 C.T.S				151821380000		55.930	
	04	SMC 150 14000 C.T.S				SA106 Gr.B		4	
	03	PLATE 6 100X5733				150100350000		285.600	
	02	PLATE 6 2640X7188				IS 2062 E250A		2	
	01	PLATE 6 2327X9188				152110920000		235.200	
						IS 2062 E250A		27.000	
						152110920000		561.910	
						IS 2062 E250A		2	
						152110920000		583.560	
						IS 2062 E250A		2	

TYPE OF PRODUCT OR NAME OF CUSTOMER/PROJECT				Bharat Heavy Electricals Ltd UNIT: HIGH PRESSURE BOILER PLANT TIRUCHIRAPALLI - 620014	
DRN	NAME	SIGNATURE	DATE	CHD	APPD
355-053	S.S.MANIAN		21.08.2015	RC GOUTAM	24.08.2015
DEPT	ALL DIMENSIONS ARE IN MM	PROJECTION	SCALE	WEIGHT (Kg)	REF TO ASSY / OLD DWG
				4241.296	
TITLE	TRANSITION DUCT (CIRCULAR TO RECT DUCT)			DRAWING NO :	REV
				2-48-492-54721	00

REV	DATE	ALTERED :
01		CHD & APPD :