

BHEL::HYDERABAD

M&S (P&C) DEPARTMENT

TENDER No.M&S/P&C/2019/47 DT.20/08/2019

NAME OF WORK: REPAIR OF 10T GREAVES GANTRY CRANE (ASSET No.11-1024) IN 12 YARD

SCOPE OF WORK

Objective :

To replace both end carriages of 10T Greaves gantry crane in 12-yard at BHEL site.

Vendor Scope

- a) Replace end carriages of overall dimensions : **Length 7850mm x Height 500mm x Width 445mm**
- b) Vendor to submit drawings & any calculations done for designing the part for vetting purposes to M&S Cranes executive before proceeding to actual fabrication work.
- c) The vendor at his discretion can decide whether to take up work inside BHEL factory premises or supplier's site.
- d) However in any case, any consumables like electrodes, gas cutting equipment, grease, cotton waste etc. will be under vendor's scope only.
- e) If vendor decides to carry out work at supplier's site then the transport of item to BHEL under vendor's scope.
- f) Metallurgical reports of material used for fabrication of end carriages to be provided by vendor.
- g) DP test & X-ray test of all weld joints to be performed by vendor & the same to be submitted to M&S Cranes Executive.
- h) All equipment required for such tests is under vendor's scope.
- i) After all the parts are fabricated, the parts are required to be painted by vendor.
- j) Painting to be done as per procedure suggested by BHEL (preparation of surface, no. of coats etc.)
- k) Erection & commissioning of new item to be taken up next at BHEL site.
- l) Dismantling of gearbox-motor assembly, wheels, electrical panels etc. from old end carriages & removal of end carriages itself under vendor's scope.
- m) Old wheels, LT mechanism (gearbox, motor etc.), electrical panels etc. are to be re-used in the new end carriages.
- n) Barricading of area and PPE (helmet, gloves, safety shoes etc.) of workmen during replacement of end carriages at BHEL site under vendor's scope.

- o) Ensuring compliance to safety procedures under vendor's scope e.g. engaging person to direct non-work related personnel away from work site,obtaining height/hot works permit from Safety Engineering Department etc.
- p) After erectioning ,crane testing will be done at rated load(& proof load test i.e. testing at 1.5 times of Safe Working Load abbreviated as SWL) and all crane movements will be checked at rated load(i.e. at 100% of SWL).
- q) Document containing drawings of end carriages, metallurgical reports, DP test records, end carriage alignment records etc. to be handed over by vendor to M&S Cranes Department after successful commissioning of crane.

BHEL Scope

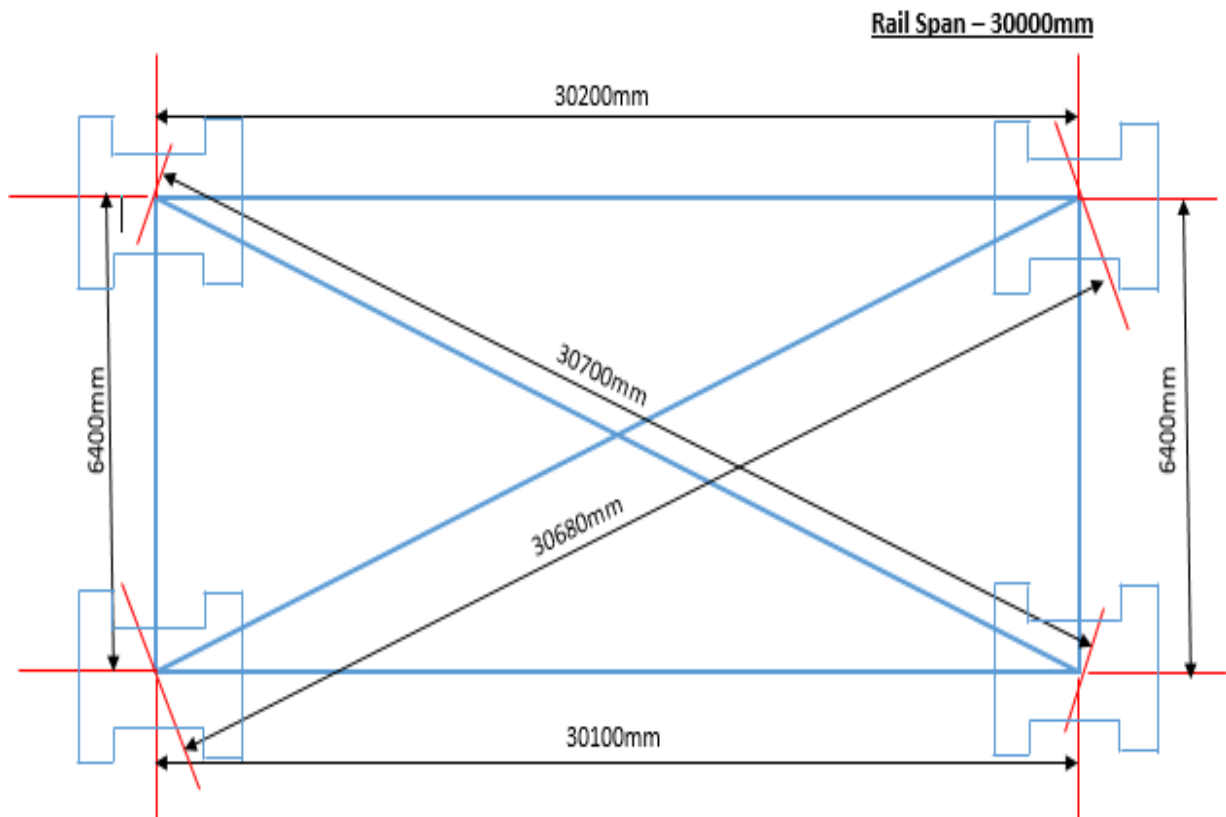
- a.) Loads for carrying out load testing and its transport to the work site under BHEL scope.
- b.) Commissioning report to be signed by vendor and M&S Cranes executive.

WARRANTY: 6 MONTHS FROM THE DATE OF HANDING OVER OF COMPLETED WORK (AS PER MOM).

10T Greaves Gantry Crane in 12 yard

Following measurements were taken at site on 17/05/2017

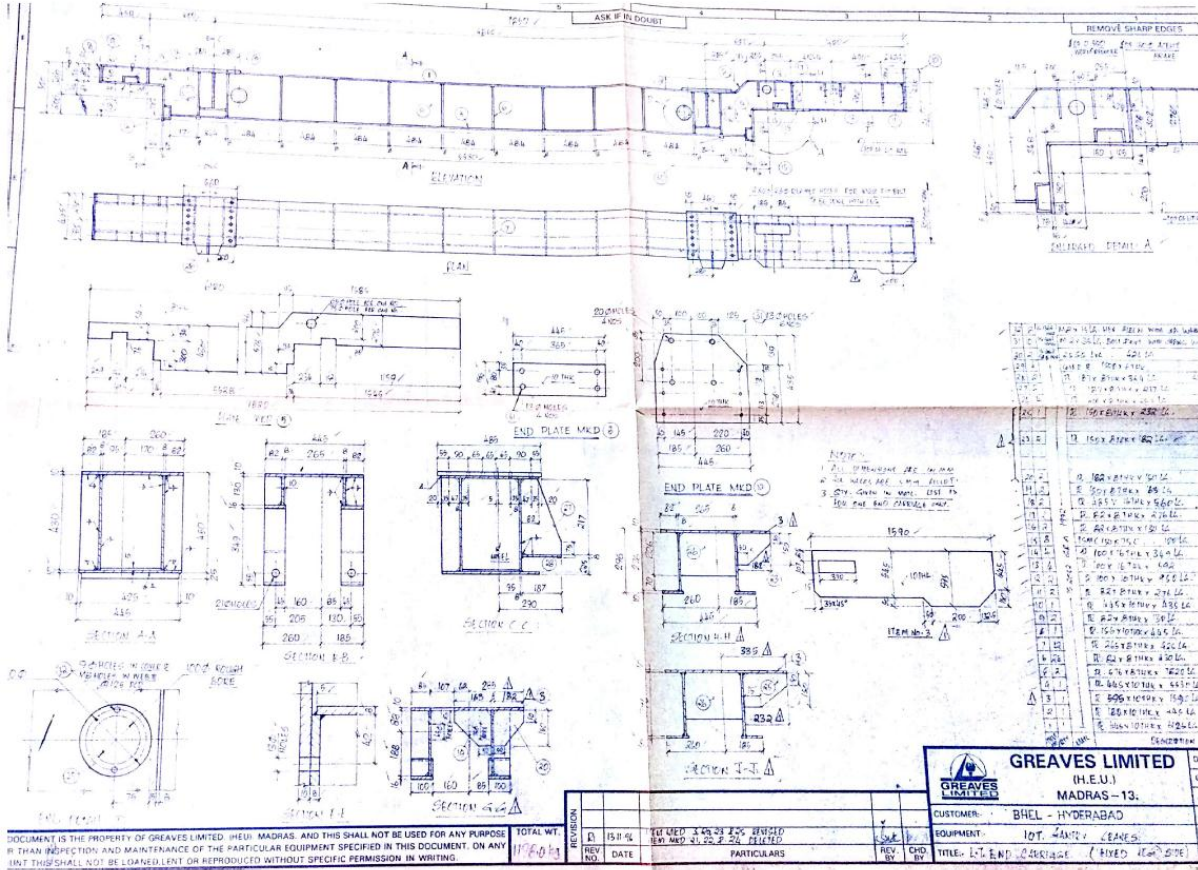
12 Store

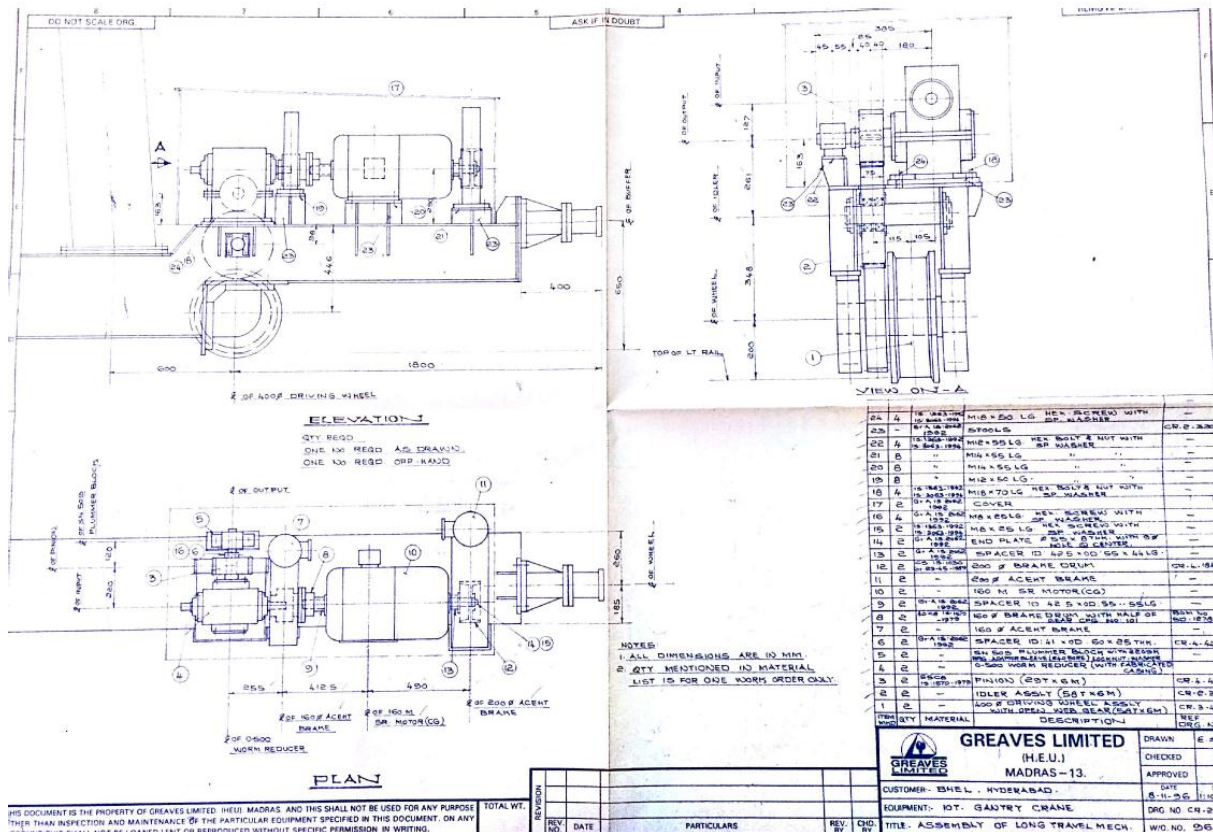


06 block

End carriage drawings :

Dwg.-1

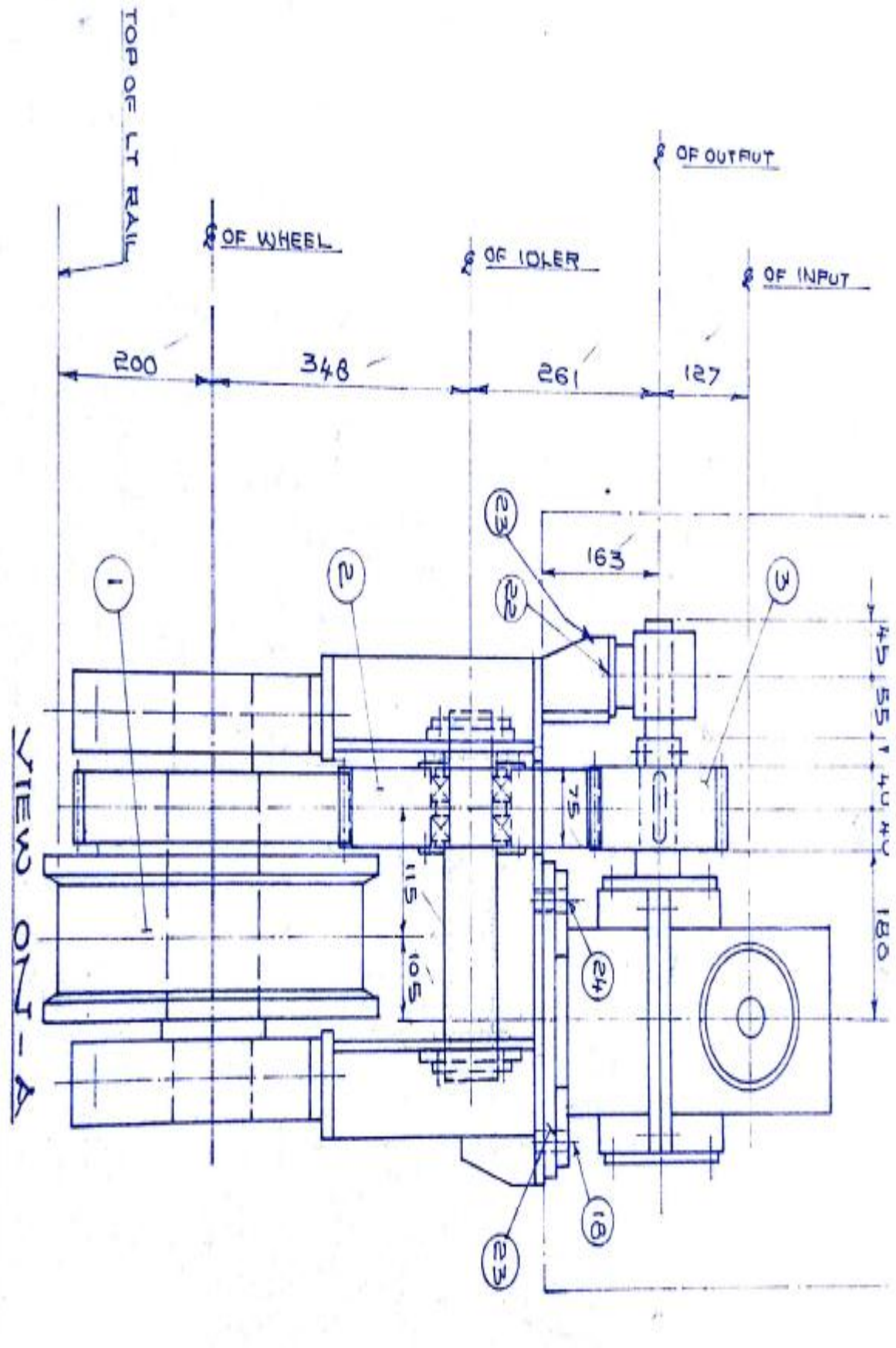




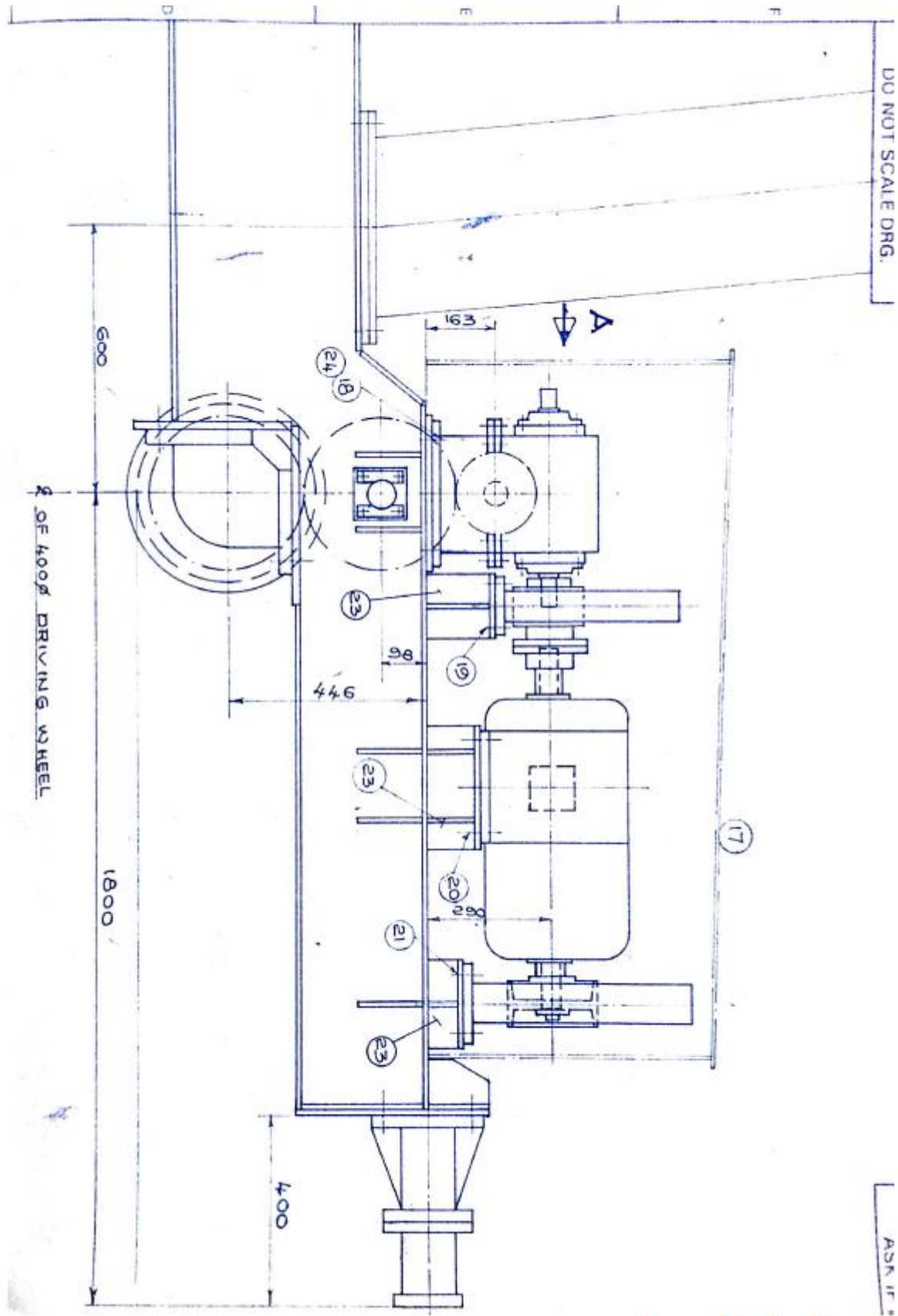
THIS DOCUMENT IS THE PROPERTY OF GREAVES LIMITED (I.E.U.) MADRAS. AND THIS SHALL NOT BE USED FOR ANY PURPOSE OTHER THAN INSPECTION AND MAINTENANCE OF THE PARTICULAR EQUIPMENT SPECIFIED IN THIS DOCUMENT. ON ANY RETURN THIS SHALL NOT BE LOANED, LENT OR REPRODUCED WITHOUT SPECIFIC PERMISSION IN WRITING.

| REV. NO. | DATE | PARTICULARS | REV. BY | CHK. BY | TITLE | W/O. NO. |
|----------|------|-------------|---------|---------|-------------------------------|----------|
| | | | | | ASSEMBLY OF LONG TRAVEL MECH. | 0562 |

Dwg.-3(portion of dwg.-2)



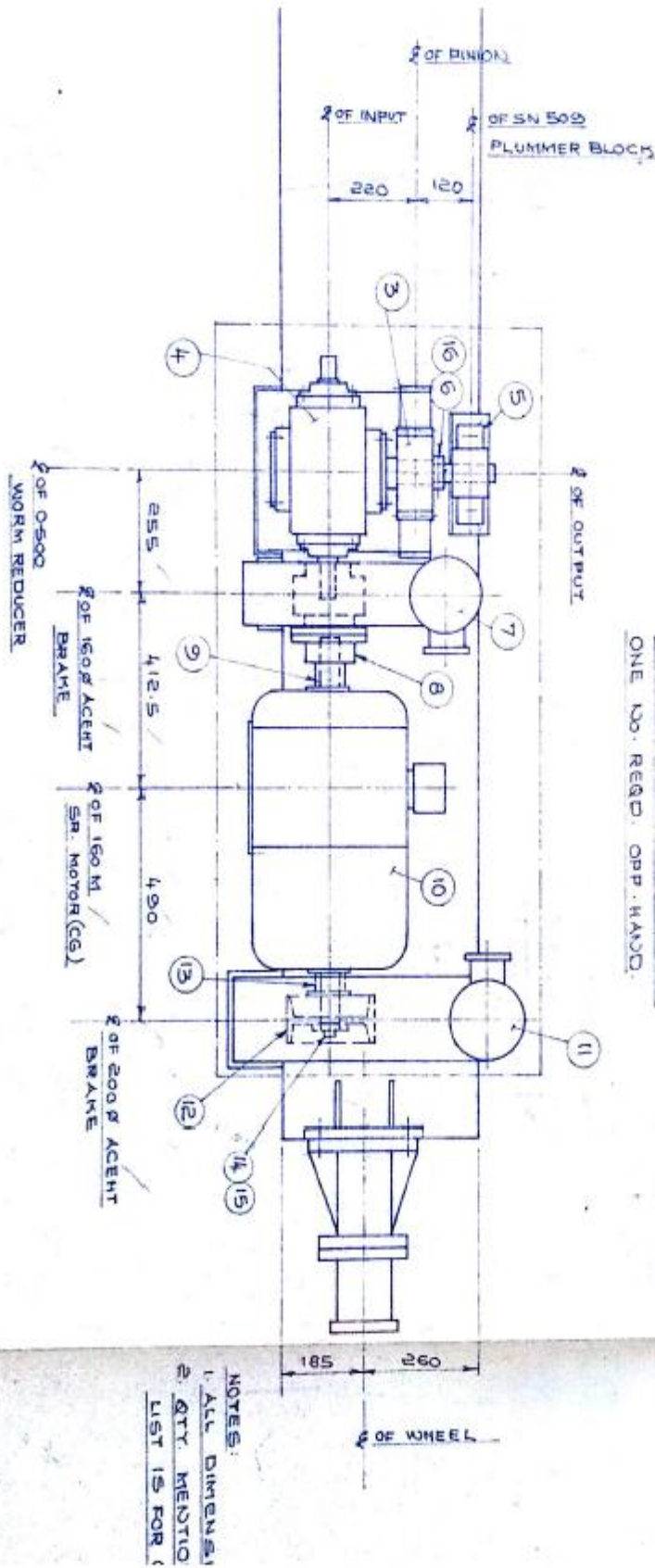
Dwg.-4(Portion of dwg.-2)



Dwg.-5(Portion of dwg.-2)

DOCUMENT IS THE PROPERTY OF GREAVES LIMITED, (HEU), MADRAS, AND THIS SHALL NOT BE USED FOR ANY PURPOSE WITHOUT PERMISSION AND MAINTENANCE OF THE PARTICULAR EQUIPMENT SPECIFIED IN THIS DOCUMENT. ON ANY

PLAN



ELEVATION
 QTY. REQD _____
 ONE NO. REQD. AS DRAWN.
 ONE NO. REQD. O.P.P. HAND.

NOTES:
 1. ALL DIMENS.
 2. QTY. MENTIO
 LIST IS FOR

TOTAL WT.

| REVISION | | |
|----------|--|--|
| | | |
| | | |
| | | |

