

**BHARAT HEAVY ELECTRICALS LIMITED**  
**ESTATE OFFICE BHEL TOWNSHIP, SECTOR-17 NOIDA- 201301**



**Maharatna Company**

**TENDER DOCUMENT**

**FOR**

**RENOVATION OF TRANSIT FLATS (5 NOS. ROOMS) AT  
BHEL TOWNSHIP, SECTOR-17, NOIDA.**

**NIT No.31: AA: NOI: ADMN: TF Renovation: 112: 2016-17**

**Date: 12.11.2016**

**CONTENTS**

- 1- Notice Inviting Open Tender
- 2- Techno commercial Bid - Part A
- 3- Price Bid - Part B

**LAST DATE FOR SUBMISSION: 30.11.2016 AT 15:00 Hrs.**



*Handwritten signature*  
भारत हेवी इलेक्ट्रिकल्स लिमिटेड  
सम्पदा कार्यालय, सेक्टर-17, नोएडा  
Bharat Heavy Electricals Limited  
Estate Office, Sector-17, NOIDA



भारत हेवी इलेक्ट्रिकल्स लिमिटेड

**Bharat Heavy Electricals Ltd.**

सम्पदा कार्यालय, सेक्टर - 17, नॉएडा - 201301 (यु. पी.) भारत

BHEL Township : Estate Office, Sector-17, Noida-201 301 (UP) INDIA

**NOTICE FOR INVITING OPEN TENDER**

Sealed tenders are invited in two part bid for the following work:-

**Name of Work** : **RENOVATION OF TRANSIT FLATS (5 NOS. ROOMS) AT BHEL TOWNSHIP, SECTOR-17, NOIDA.**  
**NIT No.** : **31: AA: NOI: ADMN: TF Renovation: 112: 2016-17**  
**Date:** **12.11.2016**  
**Period of Completion** : **06 Months**  
**Earnest Money** : **Rs. 28,900/-** (Rupees Twenty Eight Thousand Nine Hundred only)

**DATE OF SUBMISSION & OPENING OF TENDER**

**Last date for submission of sealed tender at Estate Office, BHEL Township, Sector-17, Noida** : **30/11/2016 at 1500 Hrs.**  
**Date of opening the tender** : **30/11/2016 at 1530 Hrs.**  
**Venue for opening of Tender** : **Estate Office, BHEL Township, Sector-17, Noida**

The Tender Document may be obtained from the office of Engineer (HR-TAX), Estate office, Sector-17, Noida free of cost or may be downloaded from BHEL web site ([www.bhel.com](http://www.bhel.com)) or from CPP portal (<http://eprocure.gov.in>). The sealed tender may be sent either by registered post/ Speed Post/ Courier Services or by hand in the office of Sr. Engineer (HR-TAX), between 9.00 AM to 5.30 PM on any working day latest by **30/11/2016 at 1500 Hrs.** In case of any clarification the bidder can contact undersigned on, mobile No.-9953866199 or at e-mail: [ujjwal@bhel.in](mailto:ujjwal@bhel.in).

  
(Ujjwal Tomar)

Sr. Engineer (HR-TAX)



भारत हेवी इलेक्ट्रिकल्स लिमिटेड  
सम्पदा कार्यालय, सेक्टर-17, नोएडा  
behalf of BHEL Limited  
Estate Office, Sector-17, NOIDA

## PART 'A' – TECHNO- COMMERCIAL BID

### **A. INSTRUCTIONS FOR THE BIDDERS:**

1. The offer shall be submitted as per the instructions of tender document. Only one set of tender document duly signed & stamped on each page shall be submitted as detailed further. Tenderer should note specifically that all pages of tender document, including the NIT page for this particular tender shall be submitted by them (after signing/ stamping on each page) as a part of their offer. Price shall not be mentioned by them anywhere in the techno-commercial portion of offer, except in the relevant price bid and submitted in separate sealed envelope. In case of any clarification, bidder may contact this office.
2. Tender documents are also available on BHEL web site ([www.bhel.com](http://www.bhel.com)) & on CPP Portal (<http://eprocure.gov.in/cppp/>) which can be downloaded and used as tender document for submitting the bid.
3. All documents submitted by the Tenderer in his tender may be accompanied with a covering letter giving index interlinking all the documents.
4. No overwriting / correction in tender documents by tenderer shall be allowed. However if correction is unavoidable, the same must be signed.
5. Tender must be submitted in two parts, i.e., (i) Techno-Commercial Bid along with un-price bid (Annexure-E-1) and (ii) Price Bid. The tenderer must submit their tenders in three separate sealed envelopes prominently super scribed as 'EMD Deposit', Part – A 'Techno- commercial bid' and Part-B 'Price Bid' along with NIT No. & due date written on each of the envelope. These three separate envelopes shall together be kept in fourth envelop super scribed with name of Work, NIT No. & due date of opening.
6. Techno-commercial bid should contain all the documents in proof of Pre- qualifying criteria, signed tender document having NIT page, Instructions for tenderer, general conditions, Special Conditions, Contractor's Obligations, un-price bid, all the annexure duly filled & signed by the tenderer and the envelope containing EMD.
7. Bid without requisite Earnest Money (EMD) will not be considered.
8. The tenderer shall submit the Bank details along with a cancelled cheque for payment through NEFT/RTGS.
9. Price Bid should contain only the "Part-B, Price Bid Format" after quoting the rates/amounts as specified in the Price bid format.
10. On the date of opening of tender, only Techno-Commercial Bid shall alone be opened.
11. BHEL reserves the right to accept or reject any or all offers without assigning any reason thereof. Also BHEL shall not entertain any correspondence from bidders in this matter (except for the refund of EMD).
12. In case any typing error/other clerical errors is noticed by the tenderer, in the tender documents, the same must be pointed out and got clarified before submission of offer, or else, BHEL's interpretation shall prevail & shall be binding on the tenderer.
13. The Tenderer should accept all terms & conditions of the tender unconditionally. Tenders with deviations from terms and conditions are likely to be rejected.
14. **Tenderers are requested to go through the scope of work, visit the site/location etc. and get fully acquainted with the work place and prevailing working conditions to get all their doubts clarified regarding the above work before submitting the offer. Engineer-in-charge's decision will be full and final in the event of any. Any queries regarding this tender may be clarified from Sr.Engineer (HR-TAX), on mobile No.-9953866199 or e-mail : [ujjwal@bhel.in](mailto:ujjwal@bhel.in)**
15. The tenderers or their representative may attend the opening of techno-commercial bid (Part-A) and the technically qualified tenderers or their representative may attend the opening of Price bid (Part B), if the so desire. The tenders (both the parts) shall be opened on schedule date & time even if the bidders or their representative are not present.

### **B. PRE QUALIFYING CRITERIA:**

- 1) **EMD of Rs. 28, 900/- (Rupees Twenty Eight Thousand Nine Hundred only) in the form of Banker's Cheque/Pay Order/Demand Draft in favour of BHEL, payable at New Delhi, must be submitted in a separate envelope. Electronic Fund Transfer credited in BHEL account may also be accepted before tender opening. Cash Deposit may be accepted as permissible under the extant Income Tax Act (before Tender opening). **Tender not accompanied with EMD/ EMD submitted in any forms other than mentioned above will not be accepted.****
- 2) The bidder should have PAN No., TIN Registration No., & Service Tax



भारत हेवी इलेक्ट्रिकल्स लिमिटेड  
मुख्य कार्यालय, सेक्टर-17, नोएडा  
Bharat Heavy Electricals Limited  
Estate Office, Sector-17, NOIDA

- 3) The bidder's average annual financial turnover during the last three financial years ending 31<sup>st</sup> March'16 should be at least Rs 4.34 Lakhs
- 4) The experience of having successfully completed similar Works (**Similar work shall mean execution of Civil renovation/construction works**) during last 7 years ending on 31.10.2016 should be either of the following:-
- a) Three similar completed jobs/ services costing not less than Rs. 5.78 Lakhs each.
- Or
- b) Two similar completed jobs/ services costing not less than Rs. 7.22 Lakhs each.
- Or
- c) One similar completed jobs/ services costing not less than Rs. 11.56 Lakhs.

5) **DOCUMENTS REQUIRED IN SUPPORT OF PRE-QUALIFYING REQUIREMENT:**

- a) **Complete tender document in all respects duly signed & stamped on each and every page as a token of acceptance of all the terms and conditions of tender.**
- b) Self-attested copies of Balance Sheet and Profits & Loss Account statements of last three financial years i.e. FY 2013-14, 2014-15 & 2015-2016 (AY 2014-15, 2015-2016 & 2016-17) duly verified by CA .
- c) Self-attested copies of acknowledgements of IT return of last three financial years i.e. FY 2013-14, 2014-15 & 2015-2016 (AY 2014-15, 2015-16 & 2016-17)
- d) Self-attested copies of Work Orders/ Award letters along with certificates of completion in support of proof of experience for the works executed by the bidders during last 7 years ending on 31.10.2016. BHEL reserves the right to cross check the documents from the issuing department/ company.
- e) Self-attested copies of the **PAN card, Certificate of TIN No and Service Tax Registration No.**
- f) The Bidder must Submit a declaration (enclosed at Annexure –E2), that no case is pending with the police/ court against the proprietor/ firm/ partner or the company (Agency). As well as the bidder has not been suspended / blacklisted by any organization.
- g) No deviation certificate as per Annexure –E3 (enclosed) must be signed and stamped.
- h) Bidder must submit the technical details in the enclosed format (Annexure-E4).
- i) Bidder must submit the bidder's details in the enclosed format ( Annexure-E5)
- j) Bidder must submit the check list enclosed at Annexure-E6 after duly filled and signed.

**C. GENERAL TERMS & CONDITIONS:-**

- 1) Tenders received late /in open condition/without EMD/ not meeting the tender condition / incomplete in any respect are likely to be rejected.
- 2) BHEL will not be responsible for the postal delay under any circumstances for non-receipt of Tenders by due date & time.
- 3) BHEL has the right to reject all or any of the tenders and accept any tender(s) irrespective of its / their being the lowest / highest.
- 4) If any information/ documents submitted by the tenderer are found false/fake at any stage, the tender will be cancelled and Earnest Money deposited (EMD) shall be forfeited.
- 5) The offer of the bidders who are on the banned list as also the offer of the bidders, who engage the services of the banned firms, shall be rejected. The list of the banned firms is available on BHEL web site [www.bhel.in](http://www.bhel.in)
- 6) The Tenderers are required to quote for the complete scope of work. Tenders for part of the work or incomplete in any respect are liable to be rejected.
- 7) Rates/amount/percentage quoted by the bidder will be firm for the contract period or extended period of contract. No price variation and escalation due to increase in labour / material cost will be allowed.
- 8) Estimated rates for Scheduled Items (DSR-Civil 2014) (S.No. 1 to 34) have been disclosed in the tender document and percentage rate tenders are invited for these items. All the basic rates for these items are derived from Delhi Schedule Rates 2014. Accordingly, the basic amount as per DSR has been calculated against each item. Bidders have to quote a single overall percentage, (+) above, (-) below or at par with the tender rates at S.No. 36 of Price Bid format for such items. The same quoted percentage will be applied on every item i.e. from S.No 1 to 34 of the BOQ. For the items related to Electrical works & Non-Schedule Civil Items (S.NO. 38-70), the bidders have to quote items rates & respective amounts (inclusive of all but excluding service tax) against every item. It may be noted that Evaluation of Price Bid will be done on overall L-1 rate inclusive all including Service tax (on Sl.No.75 of Price Format).



- 9) The rates/percentage/amounts quoted by the bidder are deemed to be inclusive of all, cost of site clearance and any other incidental works required to complete the work and inclusive of all the taxes but excluding Service Tax. Service Tax shall be quoted extra in the same price bid format.
- 10) All entries in the Tenders must be written in ink or typewritten. Over-writing should be avoided. Corrections, if any, should be attested with signature by the bidder.
- 11) **VALIDITY OF RATES:** Validity of rates will be 90 days from the date of opening of the techno-commercial bid.
- 12) **EVALUTION CRITERIA:** The criteria of evaluation of techno-commercial bids shall be on the basis of documents submitted by the tenderers. BHEL may finalize successful tenderer by either **opening of sealed price bid** or conducting **online Reverse Auction**. Date of opening of sealed Price Bid / conducting of online Reverse Auction will be intimated, by post or e-mail separately to the Tenderers who qualify in the Techno-Commercial bid. The decision of BHEL will be final in this regard. In case of opening of Price Bid, evaluation of bid will be on total cost to 'BHEL'. Evaluation of Price Bid will be done on overall L-1 rate inclusive all including Service tax (on SI.No.-75 of Price Format). In case of tie between the rates of two or more bidders, the Snap bidding system will be followed to arrive the L-1 bidder.
- 13) **REVERSE AUCTION:** BHEL reserves the right to go for Reverse Auction (RA) instead of opening the sealed envelope price bid, submitted by the bidder. This will be decided after techno-commercial evaluation. All bidders to give their acceptance for participation in RA. Non-acceptance to participate in RA may result in non-consideration of their bids, in case BHEL decides to go for RA. In case BHEL decides to go for Reverse Auction, only those bidders who have given their acceptance to participate in RA will be allowed to participate in the Reverse Auction. Those bidders who have given their acceptance to participate in Reverse Auction will have to necessarily submit online sealed bid in the Reverse Auction. Non-submission of online sealed bid by the bidder will be considered as tampering of the tender process and will invite action by BHEL as per extant guidelines in vogue. The Reverse Auction shall be conducted by a Service Provider (empanelled with BHEL) as per the Business Rules and Terms & Conditions.
- 14) **CORRECTION OF ARITHMETIC ERRORS:** Provided that the bid is substantially responsive, BHEL shall correct arithmetical errors on the following basis:
- If there is a discrepancy between the unit price and the total price that is obtained by multiplying the unit price and quantity, the unit price shall prevail and the total price shall be corrected, unless in the opinion of the BHEL there is an obvious misplacement of the decimal point in the unit price, in which case the total price as quoted shall govern and the unit price shall be corrected.
  - If there is an error in a total corresponding to the addition or subtraction of subtotals, the subtotals shall prevail and the total shall be corrected.
  - If there is a discrepancy between words and figures, the amount in words shall prevail, unless the amount expressed in words is related to an arithmetic error, in which case the amount in figures shall prevail subject to (a) and (b) above.
  - If any bidder does not accept the correction of errors, their bids are liable to be disqualified.
- 15) **CONTRACT AGREEMENT:** A contract agreement shall be signed before the start of work on a non-Judicial stamp paper of Rs 100/-. The contract agreement shall be deemed to have become effective from the forenoon of date of award, and will remain in force for a period 06 Months and then after for maintenance period of 12 months. However, this Agreement may be terminated earlier by BHEL at any time by giving one month's notice to the Contractor due to any failure on the part of the contractor in discharging his obligations under the contract, without prejudice to the rights of BHEL to recover any money becoming due under this Agreement. In such a case, the Contractor shall not be entitled to any compensation thereof. The decision of BHEL about the failure on the part of the Contractor shall be final and binding on the Contractor.
- 16) **COMPLETION PERIOD:** The work completion period will be 06 Months from date of award i.e. work order. The Entire work has to be completed within the contract period failing which the liquidated damages (L.D.) will be imposed.
- 17) **SUBLETING:** The Contractor shall not sublet, transfer or assign the full work or any part thereof to any other person/company/organization. In case it is found that the work has been sublet, the contract shall be terminated immediately & Security Deposit shall be forfeited.
- 18) **EPF & ESI:** The contractor should have PF code number & ESI code number as per statutory requirement, before the start of work. However in case of not having any or both the documents the contractor shall arrange & submit the documents before claiming any or both the documents.



भारत भारी बिजली लिमिटेड  
 कार्यालय, सेक्टर-17, नोएडा  
 Bharat Heavy Electricals Limited  
 Estate Office, Sector-17, NOIDA

5

- 19) Accommodation in any manner will not be provided to the workers of the contractor deployed in the execution of work.
- 20) The contractor will be responsible for the quality of the work and it is to be guaranteed for a period of one year from the date of actual completion of contract.
- 21) Period of guarantee/ maintenance shall mean the period of one year which will be calculated from the date of actual completion of the works certified by the Engineer-in-charge in accordance with conditions of the contract. The period of maintenance shall always be reckoned from the date of completion of the whole of the works as accepted / taken over by Engineer-in-charge.
- 22) **WATER & ELECTRICITY:** Water and electricity shall be supplied to the contractor by BHEL subject to the following conditions:-
- Water & Electricity shall be provided free of cost.
  - Contractor shall make his/ their own arrangement of water/ electricity connection and laying of pipelines/ connection from existing main of source of supply as directed by Engineer Incharge.
  - BHEL do not guaranty to maintain uninterrupted supply of water/ electricity and it will be incumbent on the contractor to make alternative arrangement for proper supply of the same at his/ their own cost in the event of any break down in the government water/ electricity mains so that the progress of his/ their work is not held up for the want of the same. No claim of damage or refund will be entertained on account of such break down.
- 23) **STORES AND MATERIALS ON SITE:**
- The contractor shall, during the progress of work, provide, erect and maintain at his own expense all necessary temporary work-shops, stores etc. required for the proper and efficient execution of work. The location & size of the store shall have the approval of the Engineer-in-Charge and the contractor shall at all times keep them tidy in a clean and sanitary condition to the entire satisfaction of the Engineer-in-Charge.
  - All materials for the work are to be deposited by the contractor only in places to be indicated by the Engineer-in-Charge.
  - The safety & security of the contractor's materials will be the responsibility of contractor himself. BHEL will not provide any compensation due to theft or loss of contractor's materials.
  - The stores provided by the contractor will not be utilized as the accommodation for the workers or for any other purpose.
  - Contractor will remove the temporary stores/ structure before claiming the final bill.
- 24) **PAYMENT TERMS:**
- Payment shall be made for the actual executed quantity of work after recording joint measurement on Measurement Book (MB) by Engineer-in-Charge.
  - Measurement shall be recorded in measurement book (MB) maintained by the Engineer-in-Charge who shall make entries regarding the work executed by the contractor under different items of bill of quantity (BOQ). These entries will be counter-signed by the contractor.
  - For measurement of work the norms of Indian Standards (IS) as mentioned in CPWD specifications for each items of work shall be followed.
  - Measurement shall be taken jointly by Engineer-in-Charge or his representative on the part of the BHEL & the contractor.
  - The contractor shall provide assistance with appliances and other things necessary for measurement without extra charge.
  - If the contractor / his representative fails to attend when required for measurement, the Engineer-in-Charge shall have power to proceed by himself to take measurements and in that case, these measurements shall be accepted by the contractor as final.
  - No advance payment or the payment for mobilization of work will be made to the contractor.
  - No payment shall be made for the work done without the permission of Engineer-in-Charge.
  - Running bills payment (If demanded by contractor) against the work executed shall be made to the contractor. However only one running bill will be accepted in a month.
  - The payment of final bill will be made only after obtaining certificate of satisfactory completion of the work by the Engineer-in-Charge, clearance of the site & clearance of all the liabilities on contractor's part. No claim will be entertained after signing the final bill.
  - Bills raised by the Contractor shall be certified by the official in-charge of BHEL and the payments will be made against final bill within 30 days by NEFT/RTGS from the date of receipt of in discrepant bill.
  - The contractor shall not be entitled to any interest with respect to any money which may be due to him from BHEL.
  - All payment will be subject to deduction of taxes at source as



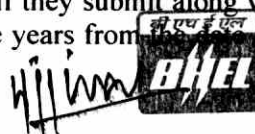
- n) Any tax incurred on purchase of materials by the contractor in respect of this contract shall be treated as included in the charges and BHEL will not entertain any additional claim whatsoever in this respect.
- o) The Service Tax shall be paid as per the quoted rate of Service Tax (at Sl. No. -73 (a) or 74 of Price Format). No payment of Service Tax will be made if not quoted by the tenderer in the Price Format.
- p) No statutory variation of taxes will be payable after scheduled work completion date. In case of new tax is introduced by GOI, new tax shall be payable after equitable adjustment. However, statutory variation of new tax shall not be payable after schedule completion date.

25) **PROGRESS OF WORK AND PENALTY FOR DELAY:**

- a) The project is time bound and works shall have to be carried out at desired pace throughout the execution period so as to complete the work in the stipulated time.
- b) In case there is a delay attributable to contractor in completing the work in 06 Months, L.D. will be imposed @ ½ % (i.e. 0.5 %) per week of delay. However the total penalty due to delay will be up to maximum 10% of total contract value. LD will be calculated on the total contract value.
- 26) **L.D. FOR BAD QUALITY OF WORK:** If the quality of work is not satisfactory, BHEL reserves the right to impose the LD up to maximum 10% of the contract value.
- 27) Tender LD i.e. for delay as well as quality is to be considered in TOTO i.e. total LD shall be 20% of the contract value.
- 28) Regular meeting (fortnightly or as decided by BHEL) shall be held between BHEL and contractor to review the issues related to progress, penalty, quality and any other aspect.
- 29) The contractor shall have to deploy sufficient number of skilled, semi-skilled and unskilled manpower for quality and timely completion of the work.
- 30) No excuses like hindrance because of extreme weather conditions, non-availability of labour and material etc. will be entertained for not completing the work in time.
- 31) All necessary precautions with respect to safety at site and environmental aspects and their impacts shall have to be taken by the contractor for activities performed by his workers.
- 32) In case of any dispute, the decision taken by BHEL Management will be final and binding on the contractor.
- 33) No party shall be permitted to tender for work in BHEL in which any of their near relatives is an employee connected with the award and execution of the contract. They shall also intimate the names of persons who are working with them in any capacity or subsequently employed by them and who are near relatives of any employee of the BHEL. Any violation of this condition which comes to the Notice of the BHEL after the contract is awarded will entitle the BHEL to treat the contractors as having committed a breach of contract and to exercise all the rights and remedies available to the BHEL on account thereof.

34) **EARNEST MONEY DEPOSIT ( EMD):**

- 1) **EMD of Rs. 28, 900/- (Rupees Twenty Eight Thousand Nine Hundred only)** in the form of Banker's Cheque/Pay Order/Demand Draft in favour of BHEL, payable at New Delhi, must be submitted in a separate envelope. Electronic Fund Transfer credited in BHEL account may also be accepted before tender opening. Cash Deposit may be accepted as permissible under the extant Income Tax Act (before Tender opening). **Tender not accompanied with EMD/ EMD submitted in any forms other than mentioned above will not be accepted.** Earnest Money is to be paid by each tenderer for securing fulfilment of any obligations in the terms of the NIT and to ensure the tenderer does not refuse to execute the Work after it is awarded to him.
- 2) **Forfeiture of EMD :**  
EMD by the Tenderer will be forfeited as per NIT conditions, if:
- i) After opening the tender and within the offer validity period, the tenderer revokes his tender or makes any modification in his tender which is not acceptable to BHEL.
- ii) The Contractor fails to deposit the required Security deposit or commence the work within the period as per LOI/ Contract.
- 3) EMD given by all unsuccessful tenderers shall be refunded normally within fifteen days of award of work.
- 4) EMD shall not carry any interest.
- 5) EMD of successful tenderer will be retained as part of Security Deposit.
- 35) MSE suppliers can avail the intended benefits only if they submit along with the offer attested copies of either EM II certificate having deemed validity (five years from the date of issue of acknowledgement in



EM II) or valid NSIC certificate or EM II certificate along with attested copy of a CA certificate (Format enclosed at Annexure -1 where deemed validity of EM II certificate of five years has expired) applicable for the relevant financial year (latest audited). Date to be reckoned for determining the deemed validity will be the date of bid opening (Part 1 in case of two part bid). On submission of such document will lead to consideration of their bid at par with other bidders. No benefits shall be applicable for this enquiry if any deficiency in the above required document are not submitted before price bid opening. If the tender is to be submitted through e-procurement portal, then the above required documents are to be uploaded on the portal . Documents should be notarized or attested by a Gazetted officer.

36) **SECURITY DEPOSIT:**

- a) Security Deposit means the security provided by the Contractor towards fulfilment of any obligations in terms of the provisions of the contract.
  - b) The total amount of Security Deposit will be 5% of the contract value.
  - c) EMD of the successful tenderer shall be converted and adjusted towards the required amount of Security Deposit.
  - d) **Modes of deposit:** The balance amount to make up the required Security Deposit of 5% of the contract value may be accepted in the following forms:
    - i) Cash (as permissible under the extant Income Tax Act)
    - ii) Local cheques of Scheduled Banks (subject to realization)/ Pay Order/ Demand Draft/ Electronic Fund Transfer in favour of BHEL
    - iii) Bank Guarantee from Scheduled Banks/ Public Financial Institutions as defined in the Companies Act. The Bank Guarantee format should have the approval of BHEL
    - iv) Fixed Deposit Receipt issued by Scheduled Banks/ Public Financial Institutions as defined in the Companies Act (FDR should be in the name of the Contractor, a/c BHEL)
    - v) Securities available from Indian Post offices such as National Savings Certificates, Kisan Vikas Patras etc. (held in the name of Contractor furnishing the security and duly endorsed/ hypothecated/ pledged, as applicable, in favour of BHEL)
    - vi) Note: BHEL will not be liable or responsible in any manner for the collection of interest or renewal of the documents or in any other matter connected therewith)
    - vii) The security deposit will be released only after completion of Guarantee/ Maintenance period of **one year** from the date of actual completion of work & upon fulfilment of contractual obligations as per terms of the contract.
    - viii) The Security Deposit shall not carry any interest.
  - e) Failure to pay the security deposit shall be treated as failure to discharge the duties under the contract and shall result in cancellation of the contract and the contractor shall be liable to compensate BHEL for any losses incurred by BHEL. BHEL reserves the right to appropriate any part / whole of the amount of the security deposit without prejudice to other claims against the contractor for losses suffered by BHEL due to failures on the part of the contractor, due to termination of contract or contractor becoming disqualified because of liquidation / insolvency. The decision of BHEL in respect of such losses, damages, charges, expenses or costs, shall be final and binding to the contractor.
- 37) **TERMINATION OF CONTRACT ON DEATH:** Without prejudice to any of the rights or remedies under this contract, if the contractor dies, the accepting officer shall have the option of terminating the contract without compensation to the contractor's survivors.
- 38) **RECOVERY FROM CONTRACTOR:** Whenever under the contract, any sum of money shall be recoverable from or payable by the contractor, the same may be deducted from any sum then due or which at any time thereafter may become due to the contractor under the contract or under any other contract with BHEL or from his security deposit, or the contractor shall pay the claim on demand without any terms & conditions.
- 39) **POST TECHNICAL AUDIT OF WORK AND BILLS:** BHEL reserves the right to carry out a post payment audit and technical examination of the work and final bill including all supporting vouchers, abstracts etc. and to enforce recovery of any sums becoming due as a result thereof in the manner provided into the proceeding sub-paragraph provided however, that no such recovery shall be enforced after three years of passing the final bill.

- 40) **ARBITRATION / CONCILIATION:** In the event of any dispute arising between the parties hereafter referred as BHEL and Contractor in respect of or connected with this contract, General & Special terms & conditions of tender, then the same shall be referred to Arbitration and Arbitrator will be nominated by the Head of Administration of BHEL Corp. Office, New Delhi. **Decision shall be final and binding on**



भारत हेवी इलेक्ट्रिकल्स लिमिटेड  
संस्थान कार्यालय, सेक्टर-17, नोएडा  
Bharat Heavy Electricals Limited  
Estate Office, Sector-17, NOIDA

both the parties. However, any differences or doubt pertaining to meaning/ interpretation of any phrase word used in terms or in the schedule of services, their nature and manner of rendering of such services shall be the excepted matter and be referred to the Head of Administration of BHEL Corp. Office, New Delhi, whose decision shall be the final and binding. The provisions of Arbitration and Conciliation Act, 1996 or any statutory modification and re-enactment thereof will apply to such arbitration provided however, in all matters the venue of proceedings will be Delhi and only Delhi or appropriate Courts will have jurisdiction over the same.

- 41) **RISK CLAUSE:** BHEL reserves the right to terminate the contract due to any failure on the part of the Contractor in discharging his obligations under the contract or in the event of his becoming insolvent or going into liquidation. The decision of the BHEL about the failure on the part of the Contractor shall be final and binding on the Contractor. In the event of any failure on the part of the Contractor, BHEL shall have the right without any prejudice to get the work done through any other alternate agency at the risk and cost of Contractor. The additional cost including loss, if any incurred by BHEL will be recovered from the Contractor.

**D) SPECIAL TERMS & CONDITIONS RELATED TO THE SUBJECT WORK:**

- a) The work will be carried out as per BOQ enclosed and as per latest CPWD Specifications and relevant IS codes for all the works. In case of any doubt regarding the specification and its quality of work, Engineer In-Charge's decision will be final and binding on the contractor.
- b) The subject works shall be carried out up to the satisfaction of Engineer-in-charge.
- c) The Typical drawings/plan of a sample flat under renovation is enclosed at Annexure-E7. It may be noted that these are rough drawings for indicative purpose only.
- d) The Cement to be used in the Works shall be 43 Grade Ordinary Portland cement conforming to IS: 8112.
- e) Cement shall be kept, at all times, in covered storage in an approved manner. No cement shall be kept on the site longer than three months before use.
- f) All the materials shall be arranged by the contractor. No materials shall be issued from BHEL.
- g) All tools and tackles required for proper completion of work shall be arranged by contractor.
- h) After completion of the work at the site, contractor will remove all unwanted material/ rubbish from the site with no extra claim.
- i) The Source of Water and Power Supply will be given at one point. All other arrangements have to be arranged by Contractor.
- j) Proper curing of all the cement work as per IS specifications shall be done by contractor on no extra claim.
- k) **CARE OF BUILDINGS:** Care shall be taken by the contractor to avoid damage to the existing buildings during execution of work. He shall be responsible for repairing all the damages and restoring the same to their original finish at his cost. He shall also remove at his costs all unwanted and waste materials arising out of his work from the site.
- l) **QUALITY & MAKE OF MATERIALS:** All materials and fittings/ fixtures supplied by the contractor shall be new. They shall be such design, size and materials as given in BOQ and to satisfactorily function. The make /brand of materials/ fittings shall be as per following table. The equivalent make/ brand shall be approved by Engineer-in-charge.

Sl. No.	Name of Material/ Fittings	Make/ Brand
A	<b>CIVIL ITEMS :</b>	
1	Cement	Birla, ACC, Ambuja or equivalent
2	CPVC Pipes & Fittings	Flowguard, Astral, Supreme or equivalent
3	uPVC Pipes & Fittings	Prakash, Tirupati or Jain or equivalent
4	CP bath Fittings	Jaguar, Metro, Zim or equivalent
5	PTMT Fittings	Prayag or equivalent
6	China ware items like WC panes, Flushing Cistern & Wash Basin etc.	Hindware, Cera, Parryware or equivalent
7	Glazed & Vitrified Tiles	Kajaria, Somany, Nitco or equivalent
8	PVC Doors	Rajshri or equivalent
9	Float Glass panes	Modi Guard, Saint Gobain, or equivalent
10	Flush Door & Ply board	Centu Ply, Kulply, Tipupati or equivalent

*Handwritten signature*  


भारत हेवी इलेक्ट्रिकल्स लिमिटेड  
 संस्थान कार्यालय, सेक्टर-17, नोएडा  
 Bharat Heavy Electricals Limited  
 Estate Office, Sector-17, NOIDA

11	Plaster of Paris (POP)	Sakarni, ACC or Birla or equivalent
12	Wall Primer	Asian Paints (Decoprime wall primer), Berger (BP White Primer), Nerolac (Wall Primer)
13	Oil Bound Distemper (OBD)	Asian Paints (Tractor Acrylic Distemper), Berger (Bison Acrylic Distemper), Nerolac (Beauty Acrylic Distemper)
14	Wood Primer	Asian Paints (Wood Primer), Berger (Wood Primer), Nerolac Primer
15	Synthetic Enamel Paint	Asian Paints (Apolite Premium Gloss Enamel), Berger (Luxol High Gloss Enamel), Nerolac (Synthetic Enamel)
<b>B</b>	<b>ELECTRICAL ITEMS:</b>	
1	Copper Cables for wiring	Finolex, Havells, Anchor, Polycab or L&T
2	PVC Conduit pipe & pipe fittings	AKG, Polypack or equivalent
3	Switch, Socket, Holder, Ceiling Rose, Electronic Regulator, Telephone Socket, TV Socket.	Havells, Anchor, Philips or equivalent
4	MCB Distribution Board & MCB/MCCB	Havells, Hager, ABB or equivalent
5	Ceiling Fans, Exhaust Fans.	Havells, Bajaj, Khaitan, or equivalent
5	Light fittings	Havells, Philips, Syska or equivalent

- m) **INSPECTION OF MATERIALS:** All the materials delivered by the contractor at site shall be inspected and verified by Engineer-in-charge before use.
- n) **WORKMANSHIP:** Good workmanship is an essential requirement to be complied with. The entire work shall conform to sound engineering practice. In case of bad workmanship re-work will be done by the contractor on no extra claim
- o) **SUPERVISION OF WORK:** The contractor will deploy sufficient numbers of Supervisors/ Engineers of appropriate qualification and experience to ensure proper execution of work. They will carry out instructions of Engineer-in-charge and other senior officers of BHEL during the progress of work.
- p) **GUARANTEE / MAINTENANCE PERIOD:** The work shall be guaranteed against any inferior quality/ workmanship. The guarantee / maintenance period will be for a period of **12 months** from the date of actual completion of contract. The full Security Deposit (SD) amount shall be retained for the guarantee/ maintenance period and it shall be released after satisfactory carrying out all rectification/ repaired works as informed by the Engineer-in-charge. In case of not attending any rectification/ repairing work by the contractor, the rectification work will be carried out by any outside agency and recovery will be done from the contractor.
- q) **The bidders are advised to inspect & examine the site and obtain all the necessary information related to the scope of work/ specifications, risk & contingencies involved before submitting their offers.** Any queries regarding this tender may be clarified from the Sr. Engineer (HR-TAX) on Tel. No.- 0120-6740997, mobile No.-9953866199 or at e-mail: [ujjwal@bhel.in](mailto:ujjwal@bhel.in).
- **SANITARY & PLUMBING WORKS:**
- After dismantling all the serviceable items like CI pipes/ fittings, GI pipes/ fittings, bib cocks, stop cocks, PVC connections, shower rose, flushing cistern, wash basin etc. shall be deposited in the BHEL stores and all the unserviceable items/ rubbish shall be removed from the site.
  - All the materials & fittings shall be standard make & quality as per BOQ and which shall be conforming to the relevant IS codes.
  - For concealed plumbing work, all the joints must be checked by applying water pressure so that there is no leakage from any joints, and it has to be verified by the Engineer-in-charge before plastering work.
- **MASONRY & TILING WORKS:**
- The ceramic glazed floor & wall tiles shall be provided in toilets & bath rooms. Vitrified tiles shall be provided in all other area of flats.
  - The existing floor tiles in rooms & floor/wall tiles of toilets/ bathrooms shall be removed/dismantled. The fresh cement mortar plaster on dado and cement concrete floor shall be done before the laying of vitrified/glazed tiles in rooms/toilets/ bathrooms. The old existing tiles in rooms shall be dismantled

Ujjwal

भारत भारी इलेक्ट्रिकल लिमिटेड  
संयुक्त कार्यालय  
Bharat Heavy Electricals Limited  
Estate Office, Sector-17, NOIDA

before fixing vitrified tiles on skirting. The colour, design & pattern of tiling shall be as per direction of Engineer-in-charge.

• **SPECIAL CONDITIONS FOR uPVC/PVC DOOR WORKS:**

- a. PVC Doors with PVC Frames shall be provided in the toilet & bathrooms.
- b. The colour, pattern & design of PVC doors shall be as per direction of Engineer-in-charge.

• **SPECIAL CONDITIONS FOR POP, OBD & ENAMEL PAINTING WORKS:**

- a. All the weak plasters of ceiling & walls shall be removed, cleaned and repaired with cement plaster.
- b. All loose pieces and scales shall be removed by sand papering. The surface shall be cleaned of all grease, dirt etc.
- c. The work of wall painting will be done in four stages, namely, scrapping the surface, applying white cement based putty, applying wall primer and distempering with Oil Bound Washable distemper (OBD) in two or more coats. Each stage shall be verified by the Engineer-in-charge before start of next stage. Also, before the second coat of OBD, the first coat will be verified by Engineer-in-charge.
- d. Under the item of scrapping & surface preparation, contractor will prepare the surface smooth after removing old layers OBD or any other materials and filling all small holes with putty.
- e. Under the item providing & applying white cement based putty of 1 mm thickness, the contractor shall make the surface smooth & free from any undulation by applying a layer of white cement based putty with splint (Phatti). The thickness of 1 mm shall be the average thickness.
- f. In case the undulation cannot be removed in putty at any surface of wall, the existing plaster should be dismantled and fresh cement plaster should be done to remove the large undulations before applying putty on that surface of wall.
- g. The surface smoothness shall be checked with Plum Bob as well as in the reflection of light. In case of any un-evenness, re work of putty will be done by contractor without any extra claim.
- h. Similarly the Enamel Painting of doors shall be done in two stages namely applying of Primer and painting with synthetic enamel paints in two or more coats. Each stage shall be verified by the Engineer-in-charge before start of next stage. Also before second coat of enamel painting the first coat will be verified by Engineer-in-charge.

• **SPECIAL CONDITIONS FOR ELECTRICAL WORKS:**

- a. Concealed electrical wiring with copper wire shall be provided by the contractor. The chase cutting and repairing with cement mortar to make the wall in original condition shall be done by the contractor without any extra claim.
- b. The contractor shall engage suitably skilled workmen of various categories for execution of electrical work.
- c. All electrical works shall be carried out in accordance with the provisions of Indian Electricity Act, 1910 and Indian Electricity Rules, 1956 amended up to date.
- d. The work shall be carried out in accordance with the wiring diagram as approved by the Engineer-in-charge. The wiring diagram shall indicate the positing of switch boards, distribution boards, the runs of various mains & sub mains and the positions of all points with their controls.
- e. All circuits shall be indicated and numbered in the wiring diagram and the points shall be given the same number as the circuit to which they are electrically connected.
- f. The wiring with proper colour coding shall be done.
- g. All components in wiring installations shall be of appropriate ratings of voltage, current, and frequency, as required at the respective sections of the electrical installations in which they are used.
- h. All conductors, switches and accessories shall be of such size as to be capable of carrying the maximum current, which will normally flow through them, without their respective ratings being exceeded.
- i. All components/ fittings shall conform to relevant Indian Standard Specifications (IS codes).
- j. Similar parts of all switches, lamp holders, and distribution fuse boards, switch gears, brackets, fans and all other fittings of the same type shall be interchangeable in each installation.
- k. After the work is completed in a flat, it shall be ensured that the installation is tested and commissioned.

**D) CONTRACTOR'S OBLIGATION**

- 1) "The Bidder along with its associate/collaborators/sub-contractors/sub-vendors/consultants/service providers shall strictly adhere to BHEL Fraud Prevention Policy displayed on BHEL website <http://www.bhel.com> and shall immediately bring to the notice of BHEL Management about any fraud or suspected fraud as soon as it comes to their notice."



भारत हेवी इलेक्ट्रिकल्स लिमिटेड  
सम्पदा कार्यालय, सेक्टर-17, नोएडा  
Bharat Heavy Electricals Limited  
Estate Office, Sector-17, NOIDA

- 2) Contractor shall supervise the Work allotted to him to be carried out by his workforce. The contractor shall visit the site every day to ensure the work is carried out in fast pace for completion within schedule time.
- 3) Contractor to ensure that the workforce deployed in the premises of BHEL are physically and mentally fit and do not have any criminal record. Such employees should possess requisite skill, proficiency, qualification, experience etc.
- 4) The workforce deployed by the contractor shall be hail and healthy and should not be suffering from any communicable diseases.
- 5) Contractor to accept full and exclusive liability for the wages, Allowances, PF, ESI, for the workforce deployed by the contractor and other obligation referred under the law at present and any future taxes imposed by the Government / Local Bodies.
- 6) BHEL will have no liability whatsoever concerning the persons deployed by the contractor for the purpose. The contractor shall keep the Company indemnified against all losses or damages or liability arising out of or imposed in the course of employment of persons by the contractor.
- 7) Statutory requirement of the local authority / State Govt. / Central Govt. shall be responsibility of the contractor.
- 8) The contractor will be solely responsible for any unlawful act of their workforce while on duty. In case of theft or loss of Company's property take place due to the negligence or carelessness of workforce, the contractor will be responsible and shall make good of the same.
- 9) The Contractor shall duly comply with all acts, laws, or other statutory rules, regulations, bye-laws applicable or which might be applicable to with regard to the performance of the contract included herein or concerning this Agreement but not limited to Minimum Wages Act- 1948, Contract Labour (Regulation & Abolition) Act, 1970, Industrial Dispute Act, 1947, Workmen's Compensation Act 1923, Employees' State Insurance Act 1948 (to the extent as may be applicable, if any), Employees' Provident Fund and Misc. Provisions Act, 1952 and the amendments made thereafter to these Acts / Laws and from time to time take such steps as may be deemed necessary in this regard. The Contractor shall keep the Company Indemnified against all penalties, claims and liabilities of every kind under or for any violation of such acts, laws or regulations etc. by him or his workers.
- 10) In case, while on duty and during the course of engagement in work premises of the Company under this Agreement, if any of the Contractor's workforce suffers with any injury / indisposition due to accident or other natural calamities, the Contractor shall ensure that immediate and adequate medical aid viz., first-aid and subsequent treatment facilities are provided to the person(s) concerned free of cost without fail. In addition, the Contractor shall also be liable for meeting with statutory liabilities like ESI etc. in respect to his workers.
- 11) The Contractor shall be fully responsible for the timely payment of wages, Allowances, Bonus or any other benefits payable under the aforesaid Acts, Laws and regulations to the workforce engaged by him at the work premises of the Company. Contractor shall also be fully responsible for timely deposit of PF and ESI with the appropriate authority including submission of return of PF & ESI and issue of PF slip issued by the PF Authority. The Company shall not be responsible for these payments or any other liability on this account. The Contractor shall also indemnify and compensate the Company for any liability incurred by the Company, if any, including costs incurred thereon. In that event the nominated officer of the Company shall be entitled to recover the amount so paid, from the contractor, including forfeiture of the Security Deposit; and, if the sum so payable and / the Security Deposit is less than the Company's claim, it shall be lawful for the Company to recover the balance amount as a debt from the Contractor.
- 12) The Contractor shall indemnify and compensate the Company, if the Company as Principal Employer under the Contract Labour (Regulation and Abolition) Act, 1970 becomes liable to assume any liability towards the workforce engaged by the contractor. In that event, the provisions relating to recover as provided in relevant clauses of the said Act shall be applicable in Toto.
- 13) The Contractor shall be held responsible for any damage / loss to the work premises /or the properties of the Company (i.e. missing or broken fittings, equipments, furniture etc. and loss of such things) caused due to the negligence of his work force and shall have to replace the same at his own cost. The decision of the Engineer-in-charge shall be final and binding on the Contractor.
- 14) The contractor shall hand over a copy of all legal and statutory documents and records to BHEL for fulfilling any future requirement with the statutory authority.
- 15) The contractor shall abide by all the rules / regulations / status imposed by the Govt. or other concerned authorities. The contractor will be responsible for workmen's compensation and other requirements of local Municipalities / Govt. or any other law regulating bo

WJW  
BHEL

सम्पदा कार्यालय, सेक्टर-17, नोएडा  
Bharat Heavy Electricals Limited  
Estate Office, Sector-17, NOIDA

- 16) Contractor to maintain appropriate records of his employees deployed to carry out the job (s).
- 17) Contractor to get all his employees insured against all type of risks at his own cost.
- 18) Contractor to ensure that all precautions are taken for safety of his employees and equipments.
- 19) In the event of termination of contract for any reason whatsoever, the contractor shall withdraw all his employees from the site of BHEL. In case contractor decides to terminate services of his employees, he should settle all terminal dues including retrenchment compensation.
- 20) The successful tenderer must comply to all statutory labour law regulations applicable to this contract like minimum wages act, timely payment of wages etc. including taking of insurance cover etc. for workers employed for this contract. Any obligation on account of the above will be the liability of the successful tenderer.
- 21) In case of any objection from any statutory / local authority, the contractor has to liaison with them for smooth progress of work.
- 22) The Contractor shall ensure proper conduct and behavior of the workforce engaged by him on the site and shall remove with immediate effect, the engagement of such person(s) who does/do not conduct himself / themselves properly or misbehave(s) with the residents of township or the staff of Estate office.

  
(Ujjwal Tomar)

Sr. Engineer (HR-TAX)  
On behalf of "BHEL"



भारत हेवी इलेक्ट्रिकल्स लिमिटेड  
सम्पदा कार्यालय, सेक्टर-17, नोएडा  
Bharat Heavy Electricals Limited  
Estate Office, Sector-17, NOIDA

**UN-PRICE BID**

Name of Work : RENOVATION OF TRANSIT FLATS (5 NOS. ROOMS) AT BHEL  
TOWNSHIP, SECTOR-17, NOIDA.  
NIT No. : 31: AA: NOI: ADMN: TF Renovation: 112: 2016-17  
Date: 12.11.2016

S. N.	Description of Item	Unit	Qty.	DSR 2014 Rate	Amount
1	Dismantling tile work in floors and roofs laid in cement mortar including stacking material within 50 metres lead for thickness of tiles 10 mm to 25 mm	sqm	350.00	28.20	9870.00
2	Demolishing cement concrete manually/ by mechanical means including disposal of material within 50 metres lead as per direction of Engineer - in - charge, Nominal concrete 1:3:6 or richer mix (i/c equivalent design mix)	cum	1.00	892.70	892.70
3	Dismantling old plaster or skirting raking out joints and cleaning the surface for plaster including disposal of rubbish to the dumping ground within 50 metres lead.	sqm	400.00	20.05	8020.00
4	Dismantling G.I. pipes (external work) including excavation and refilling trenches after taking out the pipes, manually/ by mechanical means including stacking of pipes within 50 metres lead as per direction of Engineer-in-charge, 15 mm to 40 mm nominal bore.	mtr.	55.00	57.85	3181.75
5	Dismantling doors, windows and clerestory windows (steel or wood) shutter including chowkhats, architrave, holdfasts etc. complete and stacking within 50 metres lead, of area 3 sq. metres and below.	Each	5.00	141.25	706.25
6	Dismantling of flushing cistern of all types (C.I./PVC/Vitrious China) including stacking of useful materials near the site and disposal of unserviceable materials within 50 metres lead.	Each	5.00	354.45	1772.25
7	Removing dry or oil bound distemper, water proofing cement paint and the like by scrapping, sand papering and preparing the surface smooth including necessary repairs to scratches etc. complete.	sqm	850.00	9.90	8415.00
8	Cement concrete flooring 1:2:4 (1 cement : 2 coarse sand : 4 graded stone aggregate) finished with a floating coat of neat cement, including cement slurry, but excluding the cost of nosing of steps etc. complete, 40 mm thick with 20 mm nominal size stone aggregate	sqm	20.00	353.35	7067.00



9	Repairs to plaster of thickness 12 mm to 20 mm in patches of area 2.5 sq. meters and under, including cutting the patch in proper shape, raking out joints and preparing and plastering the surface of the walls complete, including disposal of rubbish to the dumping ground within 50 metres lead, with cement mortar 1:4 (1 cement : 4 fine sand)	sqm	440.00	247.80	109032.00
10	Extra for providing and mixing water proofing material in cement Per bag of plaster work in proportion recommended by the manufacturers, 50 kg cement used in the mix.	kg	55.00	50.65	2785.75
11	Providing and laying vitrified floor tiles in different sizes (thickness to be specified by the manufacturer) with water absorption less than 0.08% and conforming to IS : 15622, of approved make, in all colours and shades, laid on 20mm thick cement mortar 1:4 (1 cement : 4 coarse sand), including grouting the joints with white cement and matching pigments etc., complete. Size of Tile 600x600 mm	sqm	200.00	1405.95	281190.00
12	Providing and laying Ceramic glazed floor tiles of size 300x300 mm (thickness to be specified by the manufacturer) of 1st quality conforming to IS : 15622 of approved make in colours such as White, Ivory, Grey, Fume Red Brown, laid on 20 mm thick cement mortar 1:4 (1 Cement : 4 Coarse sand), including pointing the joints with white cement and matching pigment etc, complete.	sqm	20	785.4	15708.00
13	Providing and fixing 1st quality ceramic glazed wall tiles conforming to IS: 15622 (thickness to be specified by the manufacturer), of approved make, in all colours, shades except burgundy, bottle green, black of any size as approved by Engineer-in-Charge, in skirting, risers of steps and dados, over 12 mm thick bed of cement mortar 1:3 (1 cement : 3 coarse sand) and jointing with grey cement slurry @ 3.3kg per sqm, including pointing in white cement mixed with pigment of matching shade complete.	sqm	150.00	836.65	125497.50
14	Providing and applying white cement based putty of average thickness 1 mm, of approved brand and manufacturer, over the plastered wall surface to prepare the surface even and smooth complete.	sqm	850.00	89.65	76202.50
15	Distempering with oil bound washable distemper of approved brand and manufacture to give an even shade, new work (two or more coats) over and including water tinnable priming coat with cement primer.	sqm	850.00	89.70	76245.00
16	Melamine polishing on wood work (one or more coat).	sqm	21.00	76.70	1610.70
17	Painting with synthetic enamel paint of approved brand and manufacture of required colour to give an even shade, One or more coats on old work.	sqm	2.00	48.50	97.00
18	Providing and fixing C.P. brass bib cock of approved quality conforming to IS:8931, 15 mm nominal bore .	Each	1.00	129.75	129.75


 भारत हेवी इलेक्ट्रिकल्स लिमिटेड  
 सम्पदा कार्यालय, सेक्टर-17, नोएडा  
 Bharat Heavy Electricals Limited  
 Estate Office, Sector-17, NOIDA

19	Providing and fixing C.P. brass long body bib cock of approved quality conforming to IS standards and weighing not less than 690 gms. 15 mm nominal bore	Each	5.00	610.65	3053.25
20	Providing and fixing C.P. brass angle valve for basin mixer and geyser points of approved quality conforming to IS:8931 a) 15 mm nominal bore 15mm nominal bore.	Each	40.00	507.70	20308.00
21	Providing and fixing C.P. brass stop cock (concealed) of standard design and of approved make conforming to IS:8931, 15 mm nominal bore.	Each	10.00	619.75	6197.50
22	Providing and fixing C.P. brass shower rose with 15 or 20 mm inlet, 150 mm diameter.	Each	5.00	86.35	431.75
23	Providing and fixing of C.P. brass toilet paper holder.	Each	5.00	415.90	2079.50
24	Providing and fixing 600x450 mm beveled edge mirror of superior glass (of approved quality) complete with 6 mm thick hard board ground fixed to wooden cleats with C.P. brass screws and washers complete.	Each	10.00	793.95	7939.50
25	Providing and fixing white vitreous china pedestal type water closet (European type W.C. pan) with seat and lid, 10 litre low level white P.V.C. flushing cistern, including flush pipe, with manually controlled device (handle lever), conforming to IS : 7231, with all fittings and fixtures complete, including cutting and making good the walls and floors wherever required, W.C. pan with ISI marked white solid plastic seat and lid.	Each	5.00	3317.3	16586.50
26	Providing and fixing Chlorinated Polyvinyl Chloride (CPVC) pipes, having thermal stability for hot & cold water supply, including all CPVC plain & brass threaded fittings, i/c fixing the pipe with clamps at 1.00 m spacing. This includes jointing of pipes & fittings with one step CPVC solvent cement and the cost of cutting chases and making good the same including testing of joints complete as per direction of Engineer in Charge. Concealed work, including cutting chases and making good the walls etc. 15 mm nominal outer dia Pipes	metre	55.00	270.00	14850.00
27	Providing and fixing Chlorinated Polyvinyl Chloride (CPVC) pipes, having thermal stability for hot & cold water supply, including all CPVC plain & brass threaded fittings, i/c fixing the pipe with clamps at 1.00 m spacing. This includes jointing of pipes & fittings with one step CPVC solvent cement and the cost of cutting chases and making good the same including testing of joints complete as per direction of Engineer in Charge. Concealed work, including cutting chases and making good the walls etc. 15 mm nominal outer dia Pipes	metre	10.00	270.00	2700.00



28	Providing and fixing 18 mm thick gang saw cut, mirror polished, premoulded and prepolished, machine cut for kitchen platforms, vanity counters, window sills, facias and similar locations of required size, approved shade, colour and texture laid over 20 mm thick base cement mortar 1:4 (1 cement : 4 coarse sand), joints treated with white cement, mixed with matching pigment, epoxy touch ups, including rubbing, curing, moulding and polishing to edges to give high gloss finish etc. complete at all levels. Granite of any colour and shade Area of slab upto 0.50 sqm -Rate of Cement mortar(as per DAR14 (Vol - 1), page -319)	sqm	4.00	3866.00	15464.00
29	Extra for providing opening of required size & shape for wash basin/ kitchen sink in kitchen platform, vanity counter and similar location in marble/ Granite/stone work, including necessary holes for pillar taps etc. including moulding, rubbing and polishing of cut edges etc. complete.	Each	10.00	386.60	3866.00
30	Providing and fixing factory made uPVC door frame made of uPVC extruded sections having an overall dimension as below (tolerance $\pm 1$ mm), with wall thickness 2.0 mm ( $\pm 0.2$ mm), corners of the door frame to be Jointed with galvanized brackets and stainless steel screws, joints mitred and Plastic welded. The hinge side vertical of the frames reinforced by galvanized M.S. tube of size 19 X 19 mm and 1mm ( $\pm 0.1$ mm) wall thickness and 3 nos. stainless steel hinges fixed to the frame complete as per manufacturer's specification and direction of Engineer in-charge Extruded section profile size 48x40 mm.	mtr.	60.00	213.75	12825.00
31	24 mm thick factory made PVC door shutters made of styles and rails of a uPVC hollow section of size 59x24 mm and wall thickness 2 mm ( $\pm 0.2$ mm) with inbuilt edging on both sides. The styles and rails mitred and joint at the corners by means of M.S. galvanised/plastic brackets of size 75x220 mm having wall thickness 1.0 mm and stainless steel crews. The styles of the shutter reinforced by inserting galvanised M.S. tube of size 20x20 mm and 1 mm ( $\pm 0.1$ mm) wall thickness. The lock rail made up of 'H' section, a uPVC hollow section of size 100x24 mm and 2 mm ( $\pm 0.2$ mm) wall thickness, fixed to the shutter styles by means of astic/galvanised M.S. 'U' cleats. The shutter frame filled with a uPVC multi-chambered single panel of size not less than 620 mm, having over all thickness of 20 mm and 1 mm ( $\pm 0.1$ mm) wall thickness. The panels filled vertically and tie bar at two places by inserting horizontally 6 mm galvanised M.S. rod and fastened with nuts and washers, complete as per manufacturer's specification and direction of Engineer-in-charge. (For W.C. and bathroom door shutter).	sqm	9.00	2718.60	24467.40



भारत हेवी इलेक्ट्रिकल्स लिमिटेड  
सम्पदा कार्यालय, सेक्टर-17, नोएडा  
Bharat Heavy Electricals Limited  
Estate Office, Sector-17, NOIDA

*Handwritten signature*

32	Providing and fixing 600x120x5 mm glass shelf with edges round off, supported on anodised aluminium angle frame with C.P. brass brackets and guard rail complete fixed with 40 mm long screws, rawl plugs etc., complete.	Each	10.00	543.8	5438.00
33	Providing and fixing bright finished brass hanging type floor door stopper with necessary screws, etc. complete.	Each	5.00	85.7	428.50
34	Providing and fixing bright finished brass 100 mm mortice latch and lock with 6 levers and a pair of lever handles of approved quality with necessary screws etc. complete.	Each	5.00	546.4	2732.00
35	Total Estimate Amount A (inclusive of all taxes excluding Service Tax) in Rs.				869957.80
36	Percentage Above(+)/Below (-) at par with S. No. 35				XXXXX
37	Total Quoted Amount A after applying percentage (S. No. 36) (inclusive of all taxes excluding Service Tax) in Rs.				XXXXX


**(B) Non Schedule Civil Work & Electrical Work**

38	Providing and fixing C.P. Wall Mixture (telephonic) of approved quality conforming to IS:8931, 15 mm nominal bore as per direction of Engineer-in charge.	Each	5.00	XXXXX	XXXXX
39	Providing and fixing CP Towel Rack complete with brackets fixed to wooden cleats with CP brass screws with concealed fittings arrangement of approved quality, design and standard size as per direction of Engineer-Incharge .	Each	5.00	XXXXX	XXXXX
40	Providing and fixing CP Towel Ring complete with brackets fixed to wooden cleats with CP brass screws with concealed fittings arrangement of approved quality, design and standard size as per direction of Engineer-incharge .	Each	10.00	XXXXX	XXXXX
41	Providing and fixing CP Soap Dish complete with brackets fixed to wooden cleats with CP brass screws with concealed fittings arrangement of approved quality, design and standard size as per direction of Engineer-incharge.	Each	5.00	XXXXX	XXXXX
42	Providing and fixing CP Brush Holder complete with brackets fixed to wooden cleats with CP brass screws with concealed fittings arrangement of approved quality, design and standard size as per direction of Engineer-incharge.	Each	5.00	XXXXX	XXXXX
43	Providing and fixing wash basin with C.I. brackets, 15 mm Centre hole Basin mixture, 32 mm C.P. brass waste of standard pattern, including painting of fittings and brackets, cutting and making good the walls wherever require: White Vitreous China Wash basin size 630x450 mm with fitting arrangement of approved quality, design and standard size as per direction of Engineer-incharge .	Each	10.00	XXXXX	XXXXX



भारत हेवी इलेक्ट्रिकल्स लिमिटेड  
सम्पदा कार्यालय, सेक्टर-17, नोएडा  
Bharat Heavy Electricals Limited  
Estate Office, Sector-17, NOIDA

44	Point wiring in PVC conduit, with modular type switch : Wiring for light point/fan point/exhaust fan point/call bell point with 1.5 sq. mm FR PVC insulated copper conductor single core cable in surface/recessed PVC conduit, with modular switch, modular plate, suitable GI box and earthing the point with 1.5 sq. mm. FR PVC insulated copper conductor single core cable etc. as required.. For Group C	Points.	50	XXXXX	XXXXX
45	Circuit/Sub-main wiring in PVC conduit: Wiring for circuit/ sub-main wiring along with earth wire with 4 X 10 sq. mm + 2 X 10 sq. mm earth wire earth wire of PVC insulated copper conductor, single core cable in surface/recessed PVC conduit as required.	Meter	100	XXXXX	XXXXX
46	Circuit/Sub-main wiring in PVC conduit: Wiring for circuit/ sub-main wiring along with earth wire with 2X4 sq. mm+ 1X4sq. mm earth wire of PVC insulated copper conductor, single core cable in surface/recessed PVC conduit as required.	Meter	200	XXXXX	XXXXX
47	Supplying and fixing 4 way (4 + 12), Double door prewired TP&N MCB distribution board of steel sheet for 415 volts on surface/ recess complete with loose wire box, terminal connectors for all incoming and outgoing circuits, duly prewired with suitable size FRLS PVC insulated copper conductor up to terminal blocks, tinned copper bus bar, neutral link, earth bar, din bar, detachable gland plate, interconnections, powder painted including earthing etc. as required.(But without MCB/ RCCB/ Isolator)	Each	5	XXXXX	XXXXX
48	Supplying and fixing 5 amps to 32 amps rating, 240/415 volts, "C" curve, miniature circuit breaker suitable for inductive load of Single pole in the existing MCB DB complete with connections, testing and commissioning etc. as required.	Each	25	XXXXX	XXXXX
49	Supplying and fixing 5 amps to 32 amps rating, 415 volts, "C" curve, miniature circuit breaker suitable for inductive load of Double pole in the existing MCB DB complete with connections, testing and commissioning etc. as required.2.10.3 Double pole	Each	5	XXXXX	XXXXX
50	Supplying and fixing suitable size GI box with Best model modular plate and cover in front on surface or in recess, including providing and fixing 6 pin 5/6 & 15/16 amps modular socket outlet and 15/16 amps modular(two module with mega indicator)- switch, connection etc. as required.	Each	50	XXXXX	XXXXX

  
 भारी एच ई एल

भारत हेवी इलेक्ट्रिकल्स लिमिटेड  
 सम्पदा कार्यालय, सेक्टर-17, नोएडा  
 Bharat Heavy Electricals Limited  
 Estate Office, Sector-17, NOIDA

51	Supplying and fixing 2 Module (75mm X 75mm) size, GI box along with Best model modular base & cover plate for modular switches in recess etc. as required.	Each	30	XXXXX	XXXXX
52	Supplying and fixing 4 Module (125mm X 75mm) size/, GI box along with modular base & cover plate for modular switches in recess etc. as required.	Each	40	XXXXX	XXXXX
53	Supplying and fixing 15/16 amp switch modular switch on the existing modular plate & switch box including connections but excluding modular plate etc. as required.	Each	40	XXXXX	XXXXX
54	Supplying and fixing 6 pin 15/16 amp modular socket outlet t on the existing modular plate & switch box including connections but excluding modular plate etc. as required.	Each	40	XXXXX	XXXXX
55	Supplying and fixing modular blanking plate on the existing modular plate & switch box excluding modular plate as required.	Each	25	XXXXX	XXXXX
56	Supplying and fixing following modular Telephone socket outlet on the existing modular plate & switch box including connections but excluding modular plate etc. as required.	Each	10	XXXXX	XXXXX
57	Supplying and fixing following modular TV antenna socket outlet on the existing modular plate & switch box including connections but excluding modular plate etc. as required.	Each	5	XXXXX	XXXXX
58	Supplying and fixing call bell suitable for single phase, 230 volts, complete as required.	Each	5	XXXXX	XXXXX
59	Supplying and fixing of 18/20 watt top model led tube light set including all accessory. Havells/Philips/equivalent make	Each	20	XXXXX	XXXXX
60	Supplying and Installation, testing and commissioning of TOP MODEL OF DECORATIVE CEILING FAN OF SWEEP 1200 MM, 400 RPM, AIR DELIVERY 230 c mm, Havel's/Crompton/Usha/ Equivalent Make including wiring etc. as required.	Each	15	XXXXX	XXXXX
61	Supplying of TOP MODEL Non Metallic 250 mm Ventilating Fans Havel's/Crompton Make	Each	5	XXXXX	XXXXX
62	Installation, testing and commissioning of Decorative wall mounting, SS finish fixture with opal glass diffuser suitable with 40W mini GLS lamp or 1x8W CFL TU/ 40W Mini GLS E14TU retrofit CFL. Make- Havells, Ordering code:- (VENZA) LHJC02108499	Each	15	XXXXX	XXXXX
63	Installation, testing and commissioning of Decorative wall mounting SS finish fixture with opal glass diffuser suitable with 2 X 40W incandescent candle lamp. Make.-Havells, Ordering code:- LHJE02206499	Each	10	XXXXX	XXXXX
64	Installation, testing and commissioning of Wall light Nickel, bronze Steel and fabric Designed for Philips Tornado up to 24W or E27, max. 60W lamp. Make.- Philips, Catalog No.- QWG316	Each	10	XXXXX	XXXXX

बी एच ई एल

भारत हेवी इलेक्ट्रिकल्स लिमिटेड  
सम्पदा कार्यालय, सेक्टर-17, नोएडा  
Bharat Heavy Electricals Limited  
Estate Office, Sector-17, NOIDA

65	Installation, testing and commissioning of surface decorative Ceiling mount fixture with HF electronic blast suitable with 22 W circular fluorescent lamp for Indore application. <b>Make.- Havells, Ordering code- LHEOECTEIC1W022</b>	Each	10	XXXXX	XXXXX
66	Supplying and Fixing of Electronic Touch Switch, Remote controllable, 4 Chanel, 2 module space taking, including with remote , Make- Crabtree/ equivalent, Item code (Crabtree)ACMSEIW064	Each	20	XXXXX	XXXXX
67	Supplying and Fixing of Electronic Touch Fan regulator, Remote controllable, 2 module space taking, including with remote , Make- Crabtree/equivalent, Item code (Crabtree) ACMREDW018.	Each	20	XXXXX	XXXXX
68	Energy saving Switch, Double pole, 3 module, 20 Amp, with Key Tag , Make- Crabtree/ Equivalent	Each	5	XXXXX	XXXXX
69	Supplying and Fixing USB charger; Rated input: 230-240 V AC (50 Hz) 0.1A, Rated Output: 5.0 V, 500 mA, in existing modular box, make- Philips/Havells/Equivalent (Philips catalog no- 9I370230I80I0)	Each	5	XXXXX	XXXXX
70	Contractor relay of rating 40 A, 4 NO, 230 V, 50 Hz, Make-Hager, Product code- ESC 440.	Each	5	XXXXX	XXXXX
71	<b>Total Quoted Amount B (inclusive of all taxes excluding Service Tax) in Rs.</b>				XXXXX
72	<b>Total Quoted Amount A+B (inclusive of all taxes excluding Service Tax) in Rs.</b>				XXXXX
73 (a)	In case, as per the current status the party (service provider) is an Individual, HUF, or partnership firm including AOP	Service Tax (on 70 % of total amount of S. No. 72) to be payable by party (.....%)			XXXXX
73 (b)		Service Tax (on 70 % of total amount of S. No. 72) to be payable by BHEL (.....%)			XXXXX
74	In case, as per the current status the party is a Private or Public limited Company	Service Tax (on 70 % of total amount of S. No. 72) to be payable by party (.....%)			XXXXX
75 (a)	Total Amount inclusive of Service Tax	In case of Individual, HUF, or partnership firm including AOP (Total of 72+73a+73b)			XXXXX
75 (b)		In case of Private or Public limited Company (Total of 72+74)			XXXXX

(Signature & seal of the contractor)


 भारत हेवी इलेक्ट्रिकल्स लिमिटेड  
 सम्पदा कार्यालय, सेक्टर-17, नोएडा  
 Bharat Heavy Electricals Limited  
 Estate Office, Sector-17, NOIDA



**DECLARATION**

I / We, do hereby declare that there is no case with the Police/Court/Regulatory authorities against the proprietor/firm/partner. Also I/We have not been suspended / delisted / blacklisted by any other Govt. Ministry / Department/Public Sector Undertaking/ Autonomous Body/Financial institution/Court. We also certify that either our firm or any of the partners are not involved in any scam or disciplinary proceedings settled or pending adjudication

**(Signature & seal of the contractor)**

Place:

Date:

  
 **भारत हेवी इलेक्ट्रिकल्स लिमिटेड**  
सम्पदा कार्यालय, सेक्टर-17, नोएडा  
Bharat Heavy Electricals Limited  
Estate Office, Sector-17, NOIDA

**ESTATE OFFICE: BHEL TOWNSHIP: NOIDA**

NIT No. : 31: AA: NOI: ADMN: TF Renovation: 112: 2016-17  
Date: 12.11.2016

**No Deviation Certificate**

Notwithstanding anything mentioned in our bid, we hereby accept all the terms and conditions of the above tender and there is no deviation in the terms & conditions of tender. We confirm that the offer submitted by is confirming to all the terms and conditions mentioned in the tender document. We hereby undertake and confirm that we have understood the scope of services properly and shall carry out the job as mentioned in this tender.

(Signature & seal of the contractor)



*[Handwritten Signature]*  
भारत भारी इलेक्ट्रिकल्स लिमिटेड  
सम्पदा कार्यालय, सेक्टर-17, नोएडा  
Bharat Heavy Electricals Limited  
Estate Office, Sector-17, NOIDA

**TECHNICAL DETAILS**

In Rs. Lacs

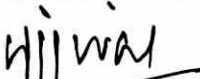
TURNOVER (F.Y.)	2013-14	2014-15	2015-16

EXPERIENCE	No. of Work	Value	Customer's Name

SIMILAR WORKS	Nature of Works	No. of works	Value	Customer's Name

EPF Registration number	
ESI Registration number	
PAN Card No.	
Service Tax No.	
TIN No.	

Income Tax Return (F.Y.)	2013-14	2014-15	2015-16
EMD Details	DD/ PO No.	Date	Amount
Details of manpower			



भारत हेवी इलेक्ट्रिकल्स लिमिटेड  
सम्पदा कार्यालय, सेक्टर-17, नोएडा  
Bharat Heavy Electricals Limited  
Estate Office, Sector-17, NOIDA

**(Signature & seal of the contractor)**

**BIDDER'S DETAILS**

Name of the Contractor /Party/ Firm	
Name of Representative	
Postal Address	
Phone/ Landline Nos.	
Mobile Nos.	
Fax No.	
E-Mail Address	
Web Site Address ( If Any)	
Bank details for payment through NEFT/RTGS and for release of EMD*	Name of Bank: Branch: Account No.: IFSC No.: MICR No.:

**Note:** Submit a canceled cheque for verification of above bank details.

**(Signature & seal of the contractor)**



*Hijmal*  
भारत भारी इलेक्ट्रिकल्स लिमिटेड  
सम्पदा कार्यालय, सेक्टर-17, नोएडा  
Bharat Heavy Electricals Limited  
Estate Office, Sector-17, NOIDA

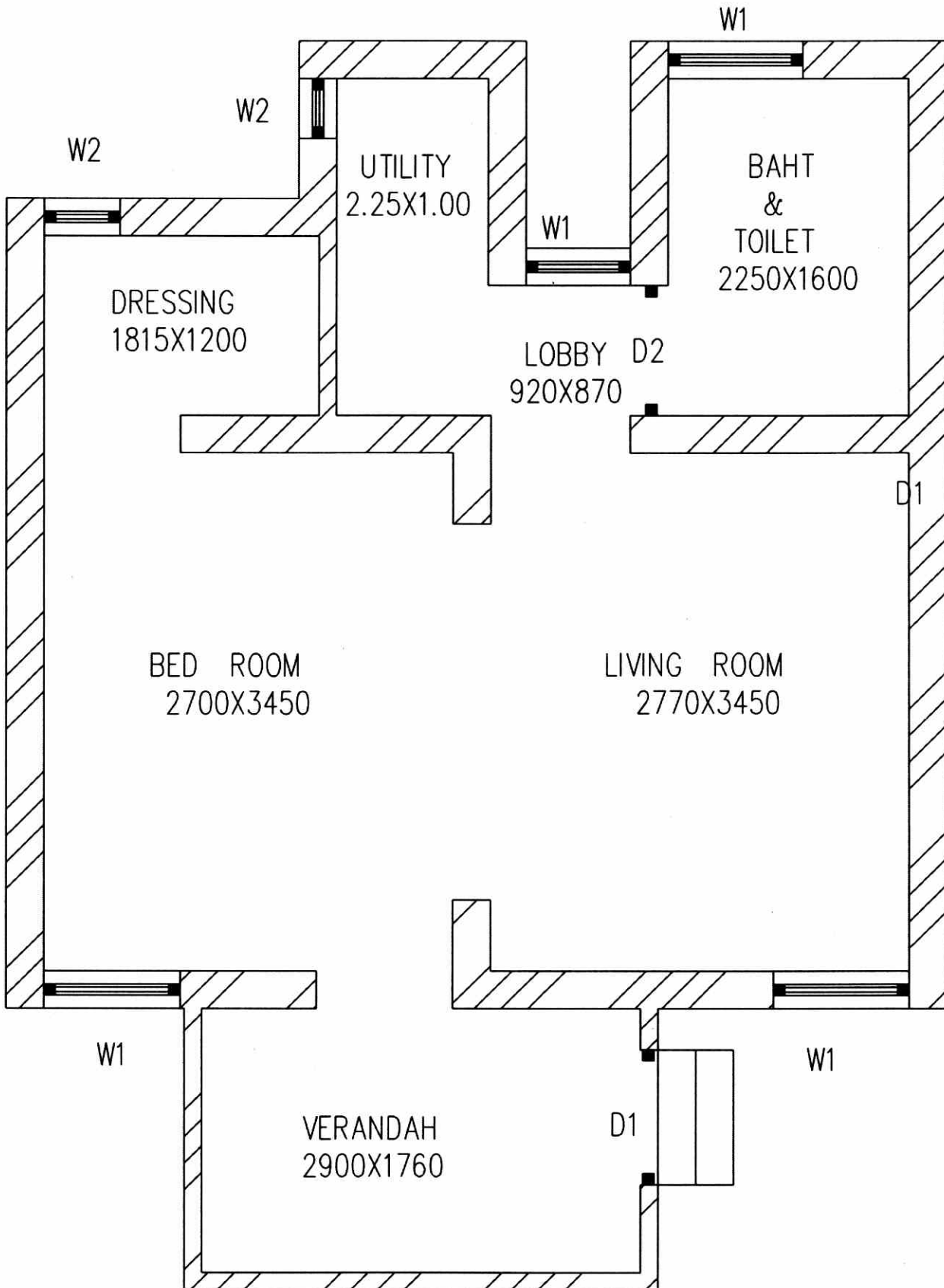
**CHECK-LIST (TECHNICAL BID)  
SUMMARY OF COMPLIANCE TO REQUIREMENT OF TENDER**

<b>Sl. No.</b>	<b>Description of requirement</b>	<b>Yes/ No/NA</b>	<b>Page No.</b>
1	EMD of Rs. 28,900/- in the prescribed mode in favour of "Bharat Heavy Electricals Ltd" in a separate envelope.		
2	Details of work experience, satisfactory work performance certificates.		
3	Copies of the Balance sheet and Profit & Loss account statement of last three financial years i.e. FY 2013-14, 2014-15 & 2015-2016 (AY 2014-15, 2015-16 & 2016-17) duly verified by CA		
4	Acknowledgement of IT returns (ITR) of last three financial years i.e. FY 2013-14, 2014-15 & 2015-2016 (AY 2014-15, 2015-16 & 2016-17)		
5	Copy of the PAN card.		
6	Copy of TIN No. registration certificate		
7	Copy of Service Tax registration certificate		
8	Copy of EPF Registration and details		
9	Copy of ESI Registration and details		
10	Declaration enclosed at Annexure – E2		
11	No deviation certificate enclosed at Annexure – E3		
12	Technical details as per Annexure-E4		
13	Bidder's detail as per Annexure- E5		
14	All the pages of tender document have been signed		
15	Sealed envelope of price bid submitted.		



*Y. J. J. J.*  
भारत हेवी इलेक्ट्रिकल्स लिमिटेड  
सम्पदा कार्यालय, सेक्टर-17, नोएडा  
Bharat Heavy Electricals Limited  
Estate Office, Sector-17, NOIDA

**(Signature & seal of the contractor)**



TRANSIT FLAT GROUND FLOOR PLAN



भारत हेवी इलेक्ट्रिकल्स लिमिटेड  
सम्पदा कार्यालय, सेक्टर-17, नोएडा  
Bharat Heavy Electricals Limited  
Estate Office, Sector-17, NOIDA

*Handwritten signature*

