 419 - 401	BHARAT HEAVY ELECTRICALS LIMITED (A Government of India Undertaking) <u>TIRUCHIRAPPALLI - 620 014</u> SUBCONTRACTING / ADVANCED TECHNOLOGY PRODUCTS	
	Telephone: 0431 – 2574151, 2575180 Fax: 0431 – 2520565	E- mail: arumugaraja@bheltry.co.in or mpvelu@bheltry.co.in
Enquiry Title : Electro chemical polishing of Heat Treated Pipe	Enquiry Number	627002E
	Date	01.08.2017
	Due Date	22.08.2017

Kindly submit your techno-commercial & price-bids separately for ‘**Electro chemical polishing of Heat treated Pipe**’ in a sealed cover addressed to

The Addl. General Manager
Sub-contracting/ATP
Building-2&4 (First Floor)
Bharat Heavy Electricals Limited
Tiruchirappalli-14

duly super-scribing the above **Enquiry Number** and **Due date**.

The offers subject to the acceptance of terms and conditions enclosed should reach us before **14.00 hrs** on the due date. The tender will be opened at **14.30 hrs** on the due date in the presence of Tenderers, who are all present.

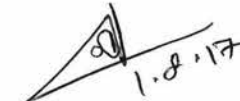
Documents submitted with the offer shall be signed and stamped in each page by authorized representative of the bidder; documents not signed and stamped by the authorized signatory of the bidder shall not be accepted and considered for evaluation of the bid.

REFER THE ENCLOSED ANNEXURES FOR SCOPE OF WORK AND DETAILED TERMS & CONDITIONS:

1. Annexure -1 for Scope of work & Delivery conditions
2. Procedure for Electro-polishing (BHE:SG-‘B’:PROC:ATP:OP&C:002/Rev.00)
3. Annexure - A Terms & conditions of Enquiry
4. Annexure – B Important points for processing attested material
5. Annexure - C Techno-commercial bid
6. Annexure - N Applicable for New Vendors only
7. Drawing 3-HE-117-02753/00

The following points may be noted before submission of tenders:

1. Tenders received after the prescribed time will not be considered for tender opening
2. The enclosed drawings & procedures shall be returned
3. Vendors who are not registered with BHEL-Trichy must fill Annexure-N & attach necessary documents


 For Bharat Heavy Electricals Limited

S. ARUMUGA RAJA
Sr. Engineer
Sub Contracting / ATP
BHEL, TRICHY - 620 014.



419 - 401

BHARAT HEAVY ELECTRICALS LIMITED

TIRUCHIRAPPALLI - 620 014

SUB CONTRACTING / ADVANCED TECHNOLOGY PRODUCTS

ANNEXURE TO ENQUIRY No: 627 002E / Dt. 01 - 08 - 2017

COMPONENT DETAILS: -

Item Sl. No	Description & Material Specification	Work Order Number & Part Number	Drawing No	Reqd Qty in Nos.
1	Heat Treated Bend Pipe SA213TP321	D143 to D148-001-1-90-117 000-2901	3-HE-117-02753/00	8
2	Heat Treated Bend Pipe SA213TP321	D151 to D156-001-1-90-628 000-2901	3-HE-117-02753/00	8

SCOPE OF OPERATIONS: -

- 1) Collection of finished components as raw materials from stores/BHEL with relevant documents.
- 2) Operation Process Sheet with stages of operations shall be prepared by the vendor and getting approval from OP&C / ATP-BHEL and QS / BARC before starting the work.
NOTE: Methodology of electro chemical polishing such as tank size, material, tube clamping material and position, electrical connection details also to be submitted to OP&C / BHEL and QS / BARC.
- 3) Electro chemical polishing to be done on the first two jobs (This first 2 jobs can be treated as trials), as per the enclosed procedure number: BHE: SG -'B': PROC: ATP: OP&C: 002 / REV 00.
 - After Processing on trials, it is to be sent to BHEL, and to be collected later after checking of surface finish.
 - Test to check surface finish will be in C'Lab / ATP shop for acceptance.
 - If test is not meeting the requirement, further trials with same tubes has to be done, until to meet the requirement.
- 4) After polishing on trial, inspection clearance to be obtained from QC / BHEL & QS / BARC.
- 5) After getting clearance on trial from QC-BHEL & QS-BARC, Carry out Electro-chemical polishing on all other components, using the procedure as followed on trial tubes. **No deviation is accepted.**
- 6) Final acceptance of the Electro chemical polished components by QC / BHEL & QS / BARC.
- 7) Finished components are to be safely dispatched to Component Stores / Ward -27 / BHEL-Tiruchy-14.

NOTES:

- 1) Offer should be submitted of **Rate / piece only**.
- 2) All the stage inspection and final inspection reports including Operation Process Sheet are to be handed over to OP&C – ATP / BHEL.
- 3) Consumables like acids, electro polishing solution, DM water, copper electrode, water tank and power source and other items if any are with subcontractor's scope.
- 4) Scope of movement of pipes after polishing to C'Lab / ATP shop and back to subcontracting works are also in subcontractor scope. There will be a gap of 10-days from the receipt of trial pipes at C'Lab for producing the results. So, subcontractor has to change the chemicals for job. **(Rate to be quoted by the subcontractor accordingly)**
- 5) Care to be taken to avoid any damage on pipes during handling for electro-polishing.
- 6) Usage of Polythene sheets to prevent contamination of surfaces, are to be arranged by the vendor.



1-8-17

S. ARUMUGA RAJA
Sr. Engineer
Sub Contracting / ATP
BHEL, TRICHY - 620 014.

- 7) Preparation of detailed dimensional report and getting approval from QC/BHEL & QS/BARC in Triplicate shall be handed over to Subcontracting / ATP.
- 8) The Invoice (Three copies) shall be addressed to Dy. General Manager / Finance and the same may be routed through Manager / Subcontracting / ATP

DELIVERY SCHEDULE: -

Lot-1: 6-Nos / Within 1-month from the date of material supply.
Lot-2: 10-Nos / Within 2-month from the date of first lot receipt.



Senior Engineer
Sub-contracting / ATP

S. ARUMUGA RAJA
Sr. Engineer
Sub Contracting / ATP
BHEL, TRICHY - 620 014.

BHARAT HEAVY ELECTRICALS LIMITED
TIRUCHIRAPALLI-14

PROCEDURE FOR ELECTROPOLISHING

BHE: SG-'B': PROC: ATP:OP&C:002/ Rev 00

This procedure deals with the step-by-step instruction for 'ELECTRO POLISHING' of SG-'B' components.

The Electro polishing procedure shall be established thro .an ordinary SS pipe with dimensions as per job

1. Receive the component and verify for its identification.
2. Confirm the surface finish of the component for the requirement of 05-0.8 microns.
3. Identify the face of the component to be electro polished.
4. Clean the surface with detergent soap solution and demineralised water. Further pickle the surface to be polished with 10-20% HNO₃ by keeping in bath of this solution for about 10 to 20 minutes' followed by cleaning with demineralised water.
 - 4.1 Cleanliness check (passivity check)
5. Choose the corresponding copper electrode of 2mm thk to suit the job's profile.
6. Assemble the copper electrode to maintain an uniform gap of 50mm between the electrode and the surface to be electro polished. Suitable holder of stainless steel for holding the job shall be used.
7. Immerse the setup in a tank containing the electrolyte in the following composition.

64%of Orthophosphoric acid
12%of sulphuric acid
24%of demineralished water.

 - 7.1 The temperature of the electrolyte shall be 30.0+/- 5 deg c and recorded.
8. Connect the D.C power source in such a way that the job is anode and the electrode is the cathode and ensure a current density of 0.2 amps/sq.cm. Record supply voltage.
9. Switch on the power supply and the supply shall be for a continuous duration of 20-30 minutes.

10. Switch off the power supply. Take out the component and visually examine for satisfactory electro polishing.

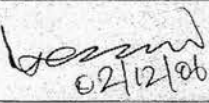

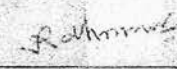
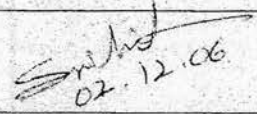
11. Visually satisfactory when examine with reference to comparator of acceptable value. Proceed with cleaning using sodium hydroxide followed by rinsing with D.M. Water

11.1 For acceptance surface finish shall be 0.5-0.8 microns.

12. If polishing is not good and uniform, the electro polishing process shall be repeated with different combination of current and process duration in consultation with the process group.

13. After nature drying, pack the component in lint free cloth and preserve it for further operations.

Note: The estimated life of the electrolyte is 60 amp.hours/litre. The further usage of the electrolyte shall be arrived based on the analysis of concentration.

<u>Prepared</u>	<u>Checked</u>	<u>Reviewed</u>	<u>Approved</u>
 02/12/06			 02.12.06
K.PARIMANAM DM/OP&C/ATP	M.S.RAVISHANKAR DGM/OP&C/ATP	R.DHARMAR DGM/QC/ATP	BARC



BHARAT HEAVY ELECTRICALS LIMITED

TIRUCHIRAPPALLI - 620 014

SUB CONTRACTING / ADVANCED TECHNOLOGY PRODUCTS

ANNEXURE-A

TERMS & CONDITIONS TO ENQUIRY 627002E Dt. 01.08.2017

1. The tender will be operated on two part bid basis i.e.
 - I. Techno-Commercial Bid &
 - II. Price Bid
2. The offer is to be submitted in a single envelope containing two envelopes. i.e. Part - I (Techno Commercial Bid) and Part - II (Price Bid)
3. **Part – I (Techno-Commercial Bid):**
 - I. Duly Signed Tender Documents
 - II. Duly signed Annexures – A&B (Terms and Conditions & Important Points for Attested material processing)
 - III. Duly filled & signed Annexure – C (Techno-Commercial Bid)
 - IV. Signed and filled Annexure – N (*Applicable for New Vendors only*. Supporting documents should be submitted along with this bid)

This Part – I document should be sealed in a separate envelope by clearly marked “Part I – Techno - commercial bid” indicating Enquiry No., Due Date., address & reference of the bidder.

4. **Part – II (Price Bid):**
 - I. Duly filled and signed Quotation – Include all the costs and quote as **Rate per piece** basis (in Rs.) **for each Sl.No.** as in Annexure -1

This price bid should be sealed in a separate envelope by clearly marked “Part II – Price bid” indicating Enquiry No., Due Date., Address & reference of the bidder.

5. It is requested to put the above two envelopes (Techno-Commercial Bid & Price Bid) inside a separate larger sealed envelope and this envelope shall be super scribed as “Techno-Commercial Bid and Price Bid “ for Enquiry No. 627002E Dt.: 01.08.2017 Due Dt.:22.08.2017

6. The offer should be addressed to:

Addl. General Manager
Sub-contracting / ATP
2&4 Building (First Floor)
Bharat Heavy Electricals Limited
Tiruchirappalli - 620 014

7. Any clarifications related to the enquiry should be addressed to arumugaraja@bheltry.co.in or mpvelu@bheltry.co.in and NIT or Enquiry number should be mentioned in the subject. Any clarifications without the reference of tender number in the subject will not be entertained.
8. Any techno commercial clarifications/request for tender due date extensions with valid acceptable reasons to be addressed to BHEL prior to 48 hours of tender due date. BHEL reserves the rights to extend the due date as per their discretion.
9. Tenders should be free from CORRECTION AND ERASURES. Corrections if any must be attested; all amounts shall be indicated both in words as well as in figures. Where there is

difference between amount quoted in words and figures, amount quoted in words shall only be considered.

10. Discrepancy in “Words “& “Figures “

- a. If, in the price structure quoted for the required goods/services/works, there is discrepancy between the unit price and the total price (which is obtained by multiplying the unit price by the quantity), the unit price shall prevail and the total price corrected accordingly, unless in the opinion of BHEL there is an obvious misplacement of the decimal point in the unit price, in which case the total price as quoted shall govern and the unit price corrected accordingly.
- b. If there is an error in a total corresponding to the addition or subtraction of subtotals, the subtotals shall prevail and the total shall be corrected; and
- c. If there is a discrepancy between words and figures, the amount in words shall prevail, unless the amount expressed in words is related to an arithmetic error, in which case the amount in figures shall prevail subject of (a) and (b) above.

11. Taxes & Duties:

All applicable taxes if payable as extra to the quoted price should be specifically stated in offers along with GST registration no. failing which BHEL will not be liable for payment of such taxes and duties. Our GSTN Code :- 33AAACB4146P2ZL Registered Address with GSTN :- Bharat Heavy Electricals Limited HPBP and SSTP, Thiruverumbur, Trichy – 14. (For GST related queries, pls contact:- gst.try@bheltry.co.in)

Taxes if any will be paid in Full for each part payment, based on supporting documents.

12. The quoted rates shall be valid for at least **12 months** from the date of price bid opening. The quoted/Finalized rates shall be Firm till completion of the supplies.
13. On the due date of tender opening, only the technical bids will be opened. Technical bids will be evaluated by BHEL and clarifications required, if any, will be called for from the bidders on technical and commercial points. The price bids of techno-commercially suitable bidders will be opened on a later date with prior intimation to respective bidders.
14. Lowest price received against BHEL tenders need not be the technically acceptable one and in that case BHEL reserves the right not to consider the same. The purchaser shall be under no obligation to accept the lowest or any other tender and shall be entitled to accept or reject any tender in part or full without assigning any reason whatsoever.
15. BHEL reserves the right to negotiate or re-float the tender opened if L1 price is not the lowest acceptable price to them inter-alia other reasons.
16. BHEL deserves the right to increase or decrease the tendered quantity.

17. Risk Purchase:

BHEL at its option will be entitled to terminate the contract and to purchase elsewhere at the risk and cost of the seller either the whole of the goods or any part which the supplier has failed to deliver or dispatch within the time stipulated as aforesaid or if the same were not available, the best and the nearest available substitute thereof. The supplier shall be liable for any loss which BHEL may sustain by reason of such risk purchases in addition to LD at the maximum rate mentioned in the LD clause above.

18. Bidders **not confirming to the enquiry specification** mentioned **will be disqualified**.
19. Any corrigendum related to the enquiry will be hosted in the BHEL website only, Bidders should visit the website to keep themselves updated.

20. The correspondence between the bidder and BHEL through email is considered as valid document legally though not signed. It is treated as valid confirmations made on behalf of the respective company and comes under the legal ambit of the business transaction and hence binding on both the parties.
21. Bidders participating in the tender should declare in their technical bid whether they have been black-listed / kept on hold / given Business holiday for a specified period by any Public Sector Undertaking or Government Departments. The reasons for such action with details and the current status of such hold shall be clearly furnished to BHEL. If no such details are mentioned in the offer, it will be construed that the bidder is not under any such hold. However, at a later date if it comes to the notice of BHEL about any such hold under enforcement, BHEL reserves the right to reject the offer at any point of time and also under any stage of the finalization of the tender. Such bidders will not be permitted to participate in the further tender proceedings and will be communicated suitably.

22. Issue of Materials:

- a. The raw materials are to be collected from BHEL by the vendor at his cost
b. ~~The raw materials will be supplied at your works at our cost.~~

23. Bank Guarantee:

You will have to execute a Bank guarantee for the value of **Rs.25,000/- (Twenty five thousand rupees)** towards satisfactory performance of the order and for the safe custody of the raw materials. The guarantee shall be executed on a Non-judicial stamp paper of value Rs.100/- and shall be kept valid for a period of one year against the orders already placed and to be placed by BHEL. All bank charges will be to the supplier's account.

In case any bidder does not accept for submission of Bank guarantee, their offer is likely to be rejected. However, in case of any vendor having a valid Bank Guarantee executed for any of the previous ATP/Sub-contracting orders, the same shall be used for this tender provided the existing BG value is not less than the requirement (cumulative value including the POs for which the deliveries are not completed) specified above.

24. Manufacturing of Components:

- a. The items are to be strictly manufactured as per Scope and drawing / OPS.
b. Attestation procedure is to be followed wherever required as per Annexure-B

25. Inspection of Components:

- a. Stage or final Inspection of the components will be done by BHEL/Customer Inspection agencies for which a register for dimensional report shall be maintained at your works and you have to provide all the required facilities Free of Cost. The Inspection results should be given in the format specified by QC/BHEL and necessary stage clearances should be obtained as mentioned in OPS.
b. The items requiring first off clearance for bulk production shall be offered for Inspection immediately after sample pieces have been completed. Only on getting the approval from our Inspector and authorised representative in writing, further work on bulk production is to be started.
c. In case of partial or full raw material supply by BHEL for rejection due to our raw materials defect, we will allow proportionate payment to the extent of machining carried out.

26. Painting & Packing of components:

- a. All the machined surfaces or threaded surfaces are to be carefully packed to avoid any damage during transportation

- b. Supplier's code number allotted by us should be punched and encircled with white paint on the finished components wherever possible. In case of small items, metal tags shall be prepared for the same.
- c. Any deviation from the scope of machining shall be suitably painted on the component at the appropriate place.
- d. Wherever our work orders specified in the Purchase order, the details of Work Order Number, Du-Part Number, Quantity Numbers and weight in Kgs., apart from the IR. No., Should be painted in white paint on any prominent surface of the component or on a metal tag of size 100x175 mm for smaller items, initially applied with Red oxide primer to IS2074 and further applied with a coat of Varnish to avoid peeling off the paint.

27. Accountability of raw materials:

Balance of raw materials will be accounted on completion of the order. ~~Balance materials will have to be returned by you to BHEL Stores. Turnings and borings / wastages are to be returned to BHEL Stores.~~

~~Turnings and borings / wastages need not be returned to our Stores. You may give due Credit to the value of the same in your quotation and accordingly quote.~~

28. Delivery of Components:

- a. The finished goods should be delivered to BHEL/Trichy by the vendor at his own cost
- b. The Delivery challan should be prepared for each Purchase order / Work order separately as per our Proforma or online through B2B (Vendor information system)
- c. The consignment should accompany sufficient copies of online IRs & DCs as mentioned in the B2B (Vendor information system)
- d. The rejected items due to material defect are to be despatched by the vendor to BHEL on "Freight to pay basis" through any of our approved transport carrier along with 3 copies of PDO, one copy of IR and 4 copies of Delivery challan.
- e. The rejected items due to faulty workmanship at vendors end are to be delivered to BHEL at his own cost

29. Payment:

Payment for 100% ~~90%~~ will be made after 45 days from the date of receipt of finished goods and against the Inspection report (IR) (when the finished items are supplied whether partially or fully to BHEL) supported by:

- a) Two copies of your delivery challan acknowledge by our Stores / Shop
- b) Material accountal Statement for BHEL supplied material / FIM
- c) Invoice of three copies, addressed to DGM/Finance and routed through AGM/SC/ATP
- d) ~~Balance 10% last payment shall be made only on completion of the order after duly accounting for rejections, short supplies (if any) and return or raw materials.~~
- e) Payment of proportionate machining charges for the rejected pieces due to material defect will be made against your Invoices in duplicate supported by 2 copies of IR. & Delivery challan acknowledged by our stores.

30. LD Clause:

Liquidated damages shall be 0.5% of the total order value per week or part thereof subject to a maximum of 10% of the total order value.

For staggered delivery schedule, LD shall be 0.5% of the undelivered portion per week of delay or part thereof subject to a maximum of 10% of the total order value.

Waiver of LD may be considered under special circumstances based on the written request from the vendor.

31. Return of Documents:

All the documents of BHEL including drawing/approved procedures made available to the vendors should be kept in **strict confidence** and under no circumstance be made available to others or allow others to make use of them. Such documents shall be returned to us on demand after completion. This secrecy clause is binding on the employees of the fabricators also. Any contravention will be subjected to legal action, besides suspending business with BHEL.

32. Any dispute arising out of or in connection with this Agreement shall be finally settled by binding arbitration in accordance with the Arbitration and Conciliation Act, 1996 as may be amended from time to time. Executive Director / BHEL, Trichy – 620 014 or his authorized representative shall be the Sole Arbitrator and his decision shall be final and binding on both the parties. The place of arbitration shall be Tiruchirapalli, and the language shall be English. The courts at Tiruchirapalli shall have exclusive jurisdiction on any dispute arising out of or in connection with this Agreement, if intervention of court is warranted, subject to the arbitration provided above.



Senior Engineer
Sub-Contracting/ATP

S. ARUMUGA RAJA
Sr. Engineer
Sub Contracting / ATP
BHEL, TRICHY - 620 014.



BHARAT HEAVY ELECTRICALS LIMITED

TIRUCHIRAPPALLI - 620 014

ADVANCED TECHNOLOGY PRODUCTS / SUB CONTRACTING

ANNEXURE - B

IMPORTANT POINTS TO BE NOTED WHILE PROCESSING THE ATTESTED MATERIAL

- 01 Raw material should not be taken up for machining/processing without attestation card.
- 02 The details given in the Attestation card should tally with the details punched on the raw material along with Inspector's seal.
- 03 Before gas cutting/hacksaw cutting/machining, attestation particulars are to be transferred to individual pieces along with BHEL Inspector's seal.
- 04 BHEL Inspector alone is authorised to put his Seal on attested material.
- 05 The following details should be punched each component. If the components are too small, the details may be punched on a Metal Tag and tied after consulting our Inspector.
 - A) Attestation card numbers.
 - B) Material specification.
 - C) Melt number
 - D) BHEL's Inspector's Seal.
 - E) Firm code number.
- 06 Before taking up the raw material for processing, clearance is to be obtained in writing from our Inspector.
- 07 If any attestation particulars are removed during machining the same is to be transferred immediately on the machined area along with our Inspector's Seal.
- 08 Before punching, if it is not a machined area, the same is to be thoroughly cleaned by grinding, Sand blasting or at-least by wire brushing. At no circumstances, the attestation shall be made on mill or heat treatment scale.
- 09 Use only 3mm letter and number punch. The punching depth shall be uniform and legible.
- 10 The attestation details are to be clearly bordered with yellow paint. Bordering is to be done only after applying rust preventive oil.
- 11 Attestation card is to be sent to Stores along with despatch documents. If any part supply is made, a true copy of the attestation card duly signed by our Inspector is to be sent along with the despatch documents. In such case, the last consignment is to be despatched with original attestation card.
- 12 All useable materials and bits are to be returned to our stores bearing attestation details with our Inspector's Seal.
- 13 Before dispatch Subcontractor should ensure that all the above points are followed without fail and ensure that the attestation details punched are correct.

Senior Engineer
Subcontracting / ATP
S. ARUMUGA RAJA
Sr. Engineer
Sub Contracting / ATP
BHEL, TRICHY - 620 014.

TECHNO-COMMERCIAL BID FOR 627002E dated 01.08.2017

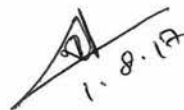
ANNEXURE - C

PRE-QUALIFICATION CRITERIA (TECHNICAL REQUIREMENTS)

SL.NO.	DESCRIPTION	BHEL REQUIREMENTS	VENDOR CONFIRMATION / DEVIATION
01	EXPERIENCE IN ELECTRO CHEMICAL POLISHING OR SIMILAR TECHNIQUES	<p>Only those vendors who have similar experience in doing these type of works should quote.</p> <ul style="list-style-type: none"> • Proof shall be submitted in the form of recent (2014-2016) Purchase order or in any other form. • BHEL reserves the right to verify the information provided by vendor. In case the information furnished by vendor is found to be false / incorrect, the offer /P.O shall be rejected. 	
02	COMPLIANCE WITH THE PROCEDURE	The vendor should submit a detailed method of control, with limits for time, temperature and PH value and other pertinent details that will ensure compliance with the requirements of procedure	
03	EQUIPMENTS/CHEMICALS TO BE USED	Details of acids, electro-polishing solutions, DM water, De-ionized or distilled water, test methods & the equipment proposed to be used shall be submitted by the vendor. The exact designation of all proprietary materials proposed for use shall be stated.	
04	TRIALS (TEST COUPONS)	Process parameters shall be established by the firm initially on trials; Job can be taken up only after acceptance of trials by BHEL & BARC	
05	PROCESS REQUIREMENT	Tanks (for cleaning, pickling, Electro-polishing, post treatment & rinsing, etc) used for processing shall be made of SS/FRP only. For each process/ treatment, separate tanks shall be used.	
06	TESTS & REPORTS	Passivation tests & surface finish inspection as per procedure are to be done by vendor in presence of BHEL QC/Lab person Test reports shall be submitted as per procedures.	

NOTES :

1. The Vendor shall attach annexures and provide detailed explanation wherever necessary.
2. Only those vendors who are meeting the pre-qualification criteria shall be considered for further tender processes.


1. 8. 17

COMMERCIAL TERMS & CONDITIONS

SL.NO.	DESCRIPTION	BHEL REQUIREMENTS	VENDOR CONFIRMATION / DEVIATION
01	VALIDITY	Validity of the offer shall be minimum 1 year from the date of tender opening	
02	FREIGHTAGE (Consider transportation cost and quote accordingly; need not be separately specified in the quotation)		
	i) RAW MATERIAL	Material to be collected from BHEL, Trichy (Consider transportation for testing purposes)	
	ii) FINISHED COMPONENTS	Finished items in 2 lots to be properly packed and delivered to BHEL, Trichy	
03	TAXES & DUTIES	Refer point 11 of Annexure-A (Not applicable in general since it involves only conversion cost)	
04	PAYMENT TERMS	Refer point 29 of Annexure-A	
05	LIQUIDATED DAMAGES	Refer point 30 of Annexure-A	
06	BANK GUARANTEE	You have to execute a bank guarantee for Rs. 25,000/- before material collection	
07	DELIVERY SCHEDULE	First lot (3 No.) Within one month from the date of material collection Second lot (balance quantity) within 2 months from the delivery of first lot	
08	RISK PURCHASE CLAUSE	Refer point 17 of Annexure-A	
09	OTHER TERMS(IF ANY)	Packing and extra care shall be taken during transportation and handling by the vendor.	


S. ARUMUGA RAJA
 Sr. Engineer
 Sub Contracting / ATP
 BHEL, TRICHY - 620 014.

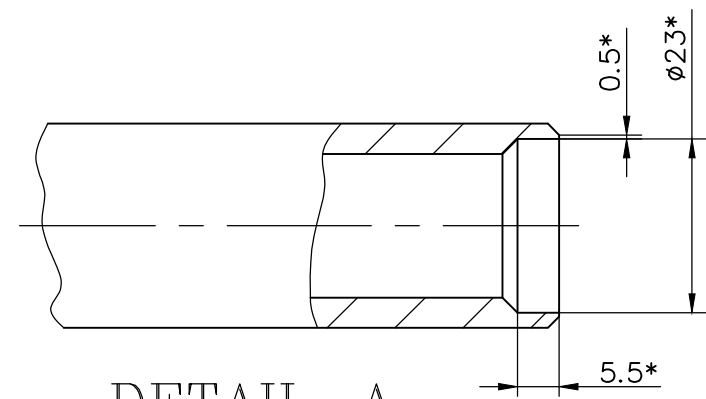
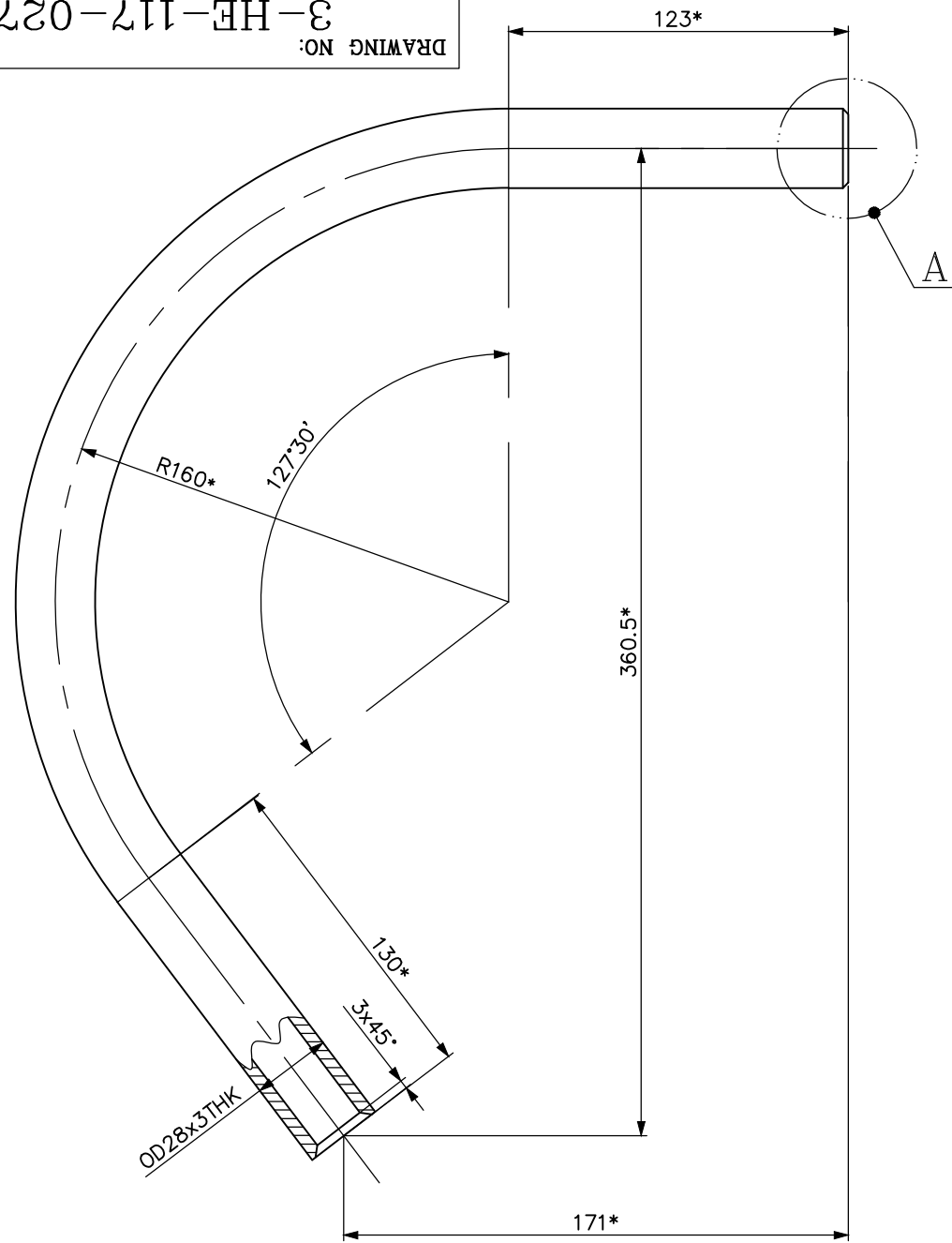
Authorised Signatory with Seal

ANNEXURE - N (For NEW VENDORS only)

SI No	Details	Document submission
1	Nature of ownership & relevant documents (Proprietorship-Professional Tax Regn & Municipal Regn; Partnership firm – Partnership Deed; Co-operative society – Society rules & bye laws ; Private/Limited Company – memorandum & Articles of Association)	
2	Product or Service range & facilities: • List down the product range & specification details. • List of Manufacturing facilities/equipment's (including material handling facility)	
3	Licence details of the factory	
4	• Permanent Account No • GST registration number • Regn number of category as per MSMED Act (If applicable)	
5	If registered with any other BHEL unit • Letter of registration with BHEL unit (If applicable) • Proof of successfully executed or executing purchase orders	
6	Accreditation certificate for ISO:9001 / TOC of Quality System manual / ISO:14000 / OHSAS ISO 18000 (If applicable)	
7	Balance Sheet for the last three years along with the audit report	
8	EXPERIENCE IN ELECTRO-POLISHING OR SIMILAR TYPE OF WORK (All the new vendors should enclose a Purchase Order copy against their previous experience)	


 1.8.17
S. ARUMUGA RAJA
 Sr. Engineer
 Sub Contracting / ATP
 BHEL, TRICHY - 620 014.

DRAWING NO: 3-HE-117-02753



DETAIL-A
(1:1)

ALL DIMENSIONS ARE IN MILLIMETERS


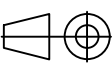
NOTES:

1. CARRY OUT ELECTRO CHEMICAL POLISHING OF OUTER SURFACE OF PIPE THROUGH APPROVED DOCUMENT.
2. MATERIAL : SA213 TP321.
3. WEIGHT : 1.290 kg.
4. *DIMENSIONS FOR REFERENCE.
5. SURFACE AREA - 53575 mm²

FOR SUBCONTRACTING PURPOSE

REV	DATE	ALTERED :
01		CHD&APPD :

CAUTION: The information on this document is the property of BHARAT HEAVY ELECTRICALS LTD. It must not be used directly or indirectly in any way detrimental to the interest of the company.

TYPE OF PRODUCT OR NAME OF CUSTOMER/PROJECT		W.O.: D143 to D148 W.O.: D151 to D156						
 BHARAT HEAVY ELECTRICALS LTD 05-229/D	Bharat Heavy Electricals Ltd		DRN	NAME NJR	SIGNATURE <i>N. Jaya Raj</i>	DATE 280717	NO. OF VAR	
	UNIT: HIGH PRESSURE BOILER PLANT		CHD	RRV/MAK	<i>R. Rajam</i>	290717		
	TIRUCHIRAPALLI - 620014		APPD	AS	<i>[Signature]</i>	290717		
DEPT NC	GRADE OF UNTOL. DIM C/M/F		SCALE	WEIGHT (Kg)	REF TO ASSY / OLD DWG		ITEM NO	No OF ITEMS
CODE 150								
TITLE ELECTRO CHEMICAL POLISHING OF PIPE			CARD CODE U 01	DRAWING NO : 3-HE-117-02753			REV 00	