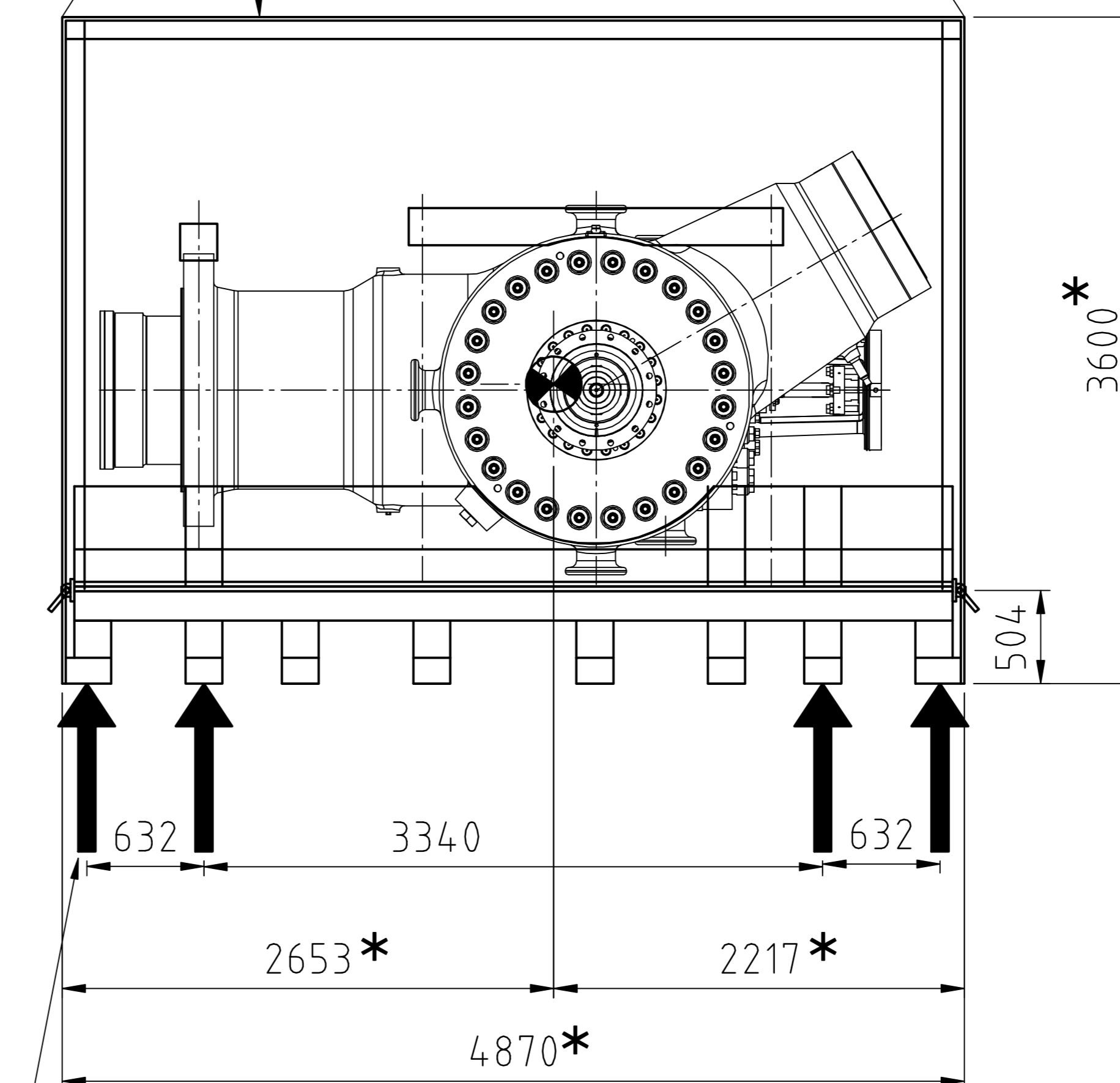
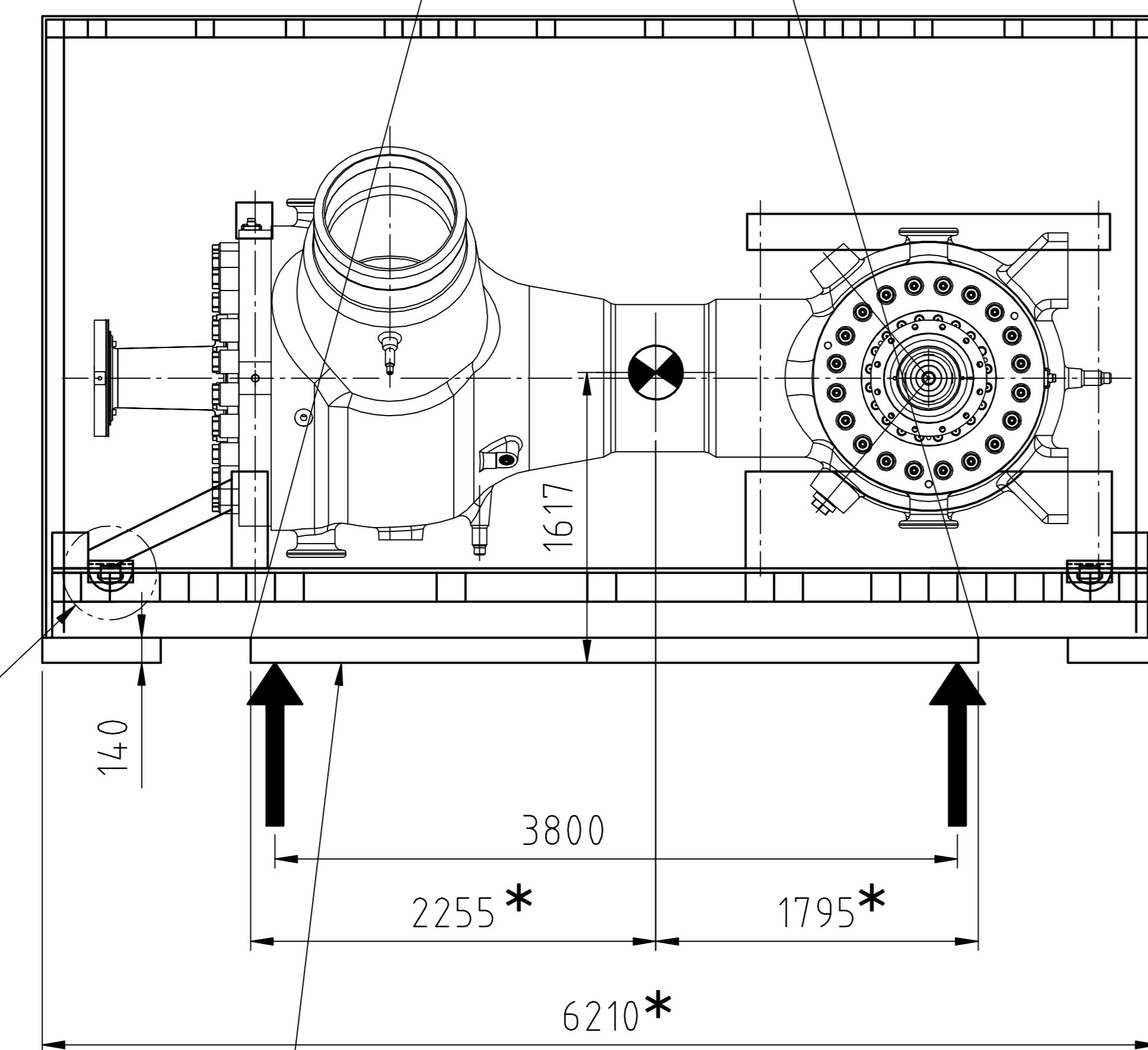


\*  
DIMENSIONS CAN VARIATE UP TO 50mm BECAUSE OF  
INACCURACY WHILE LOADING AND PACKING  
Maße können bis zu 50mm variieren aufgrund von  
Ungenauigkeiten beim Verladen und Verpacken

PACKING AND DISPATCH GUIDELINES ACC. TO TLV 0130  
Versand- und Verpackungsrichtlinie nach TLV 0130

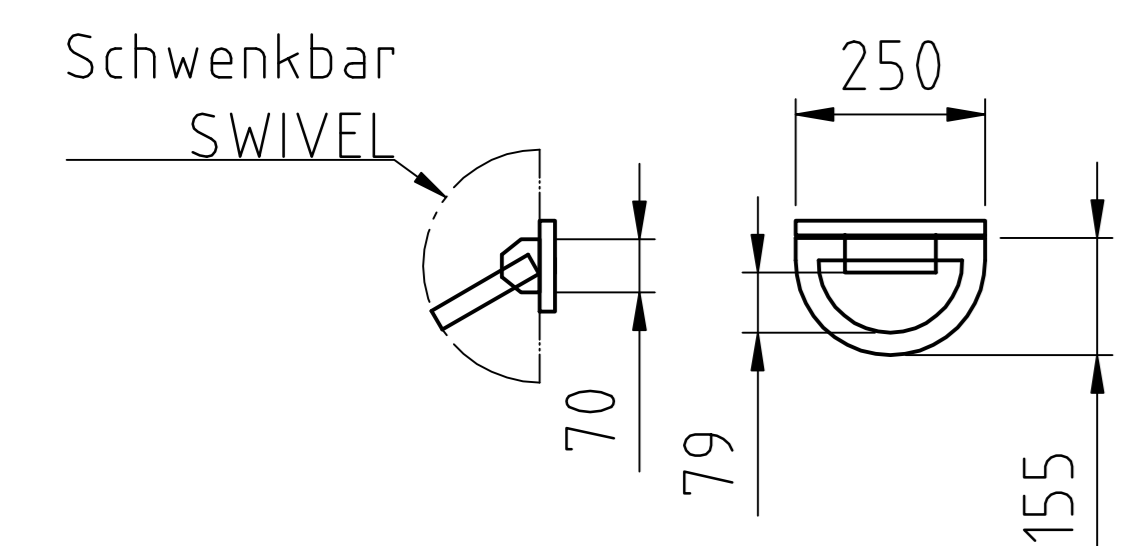
NETWEIGHT : 45 Mg  
GROSSWEIGHT: 51,4Mg

Ventil 2 spiegelbildlich verpackt /  
VALVE 2 PACKING IS SPECULAR



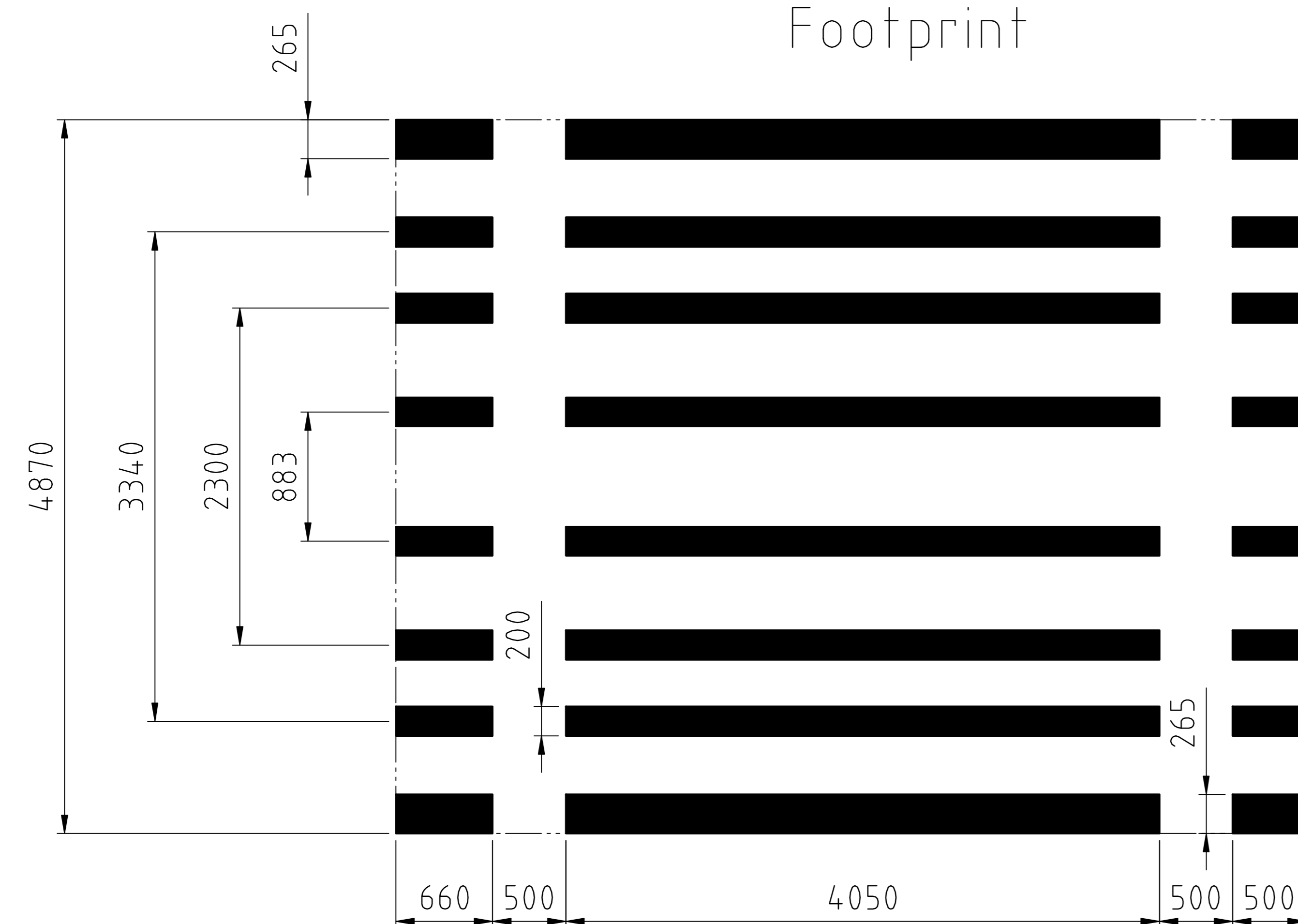
POSITION OF SUPPORTS  
SUPPORT BOTH LONGRUNNERS  
Position für Abstellböcke  
Beide Längsbalken unterstützen

Zurtpunkt ZA-3  
LASHING POINT ZA-3  
max.Load 150kN



ALWAYS USE ANTI SKID PADS BELOW FRAME  
FRICTION FACTOR  $\mu \geq 0,6$   
Antirutschmatten unter Auflagefläche  
benutzen  $\mu \geq 0,6$

Footprint



OWNER:	LALITPUR POWER GENERATION COMPANY LTD
DESIGN/ENGINEER:	TATA CONSULTING ENGINEERS BANGALORE, INDIA
	LALITPUR SUPER THERMAL POWER PROJECT-33660MW
	LALITPUR, UTTAR PRADESH
CONTRACTOR:	BHARAT HEAVY ELECTRICALS LTD
	KANPUR, UTTAR PRADESH, INDIA
488176518	B
10M050	10MAC
	&MTC020 300404
PK2	Contract: Equip
	DEL / IN
	Proj No:

TECHNOLOGY NOT SPECIFIED IN THE CCL, AL OR RCL  
TECHNICAL CLASSIFICATION:  
ECCN: EAR99 AL: N RCL: N US-Content:  
THIS DOCUMENT IS SUBJECT TO US AND/OR NATIONAL EXPORT REGULATIONS. UNAUTHORIZED  
DIVERSION IS PROHIBITED. IN CASES OF DOUBT CONTACT YOUR EXPORT COMPLIANCE  
DEPARTMENT.

REVISION: SEE SEPARATE CID DOCUMENT		
<b>Siemens AG</b> Energy Sector		
WEIGHT:	SCALE: 1:1	SPEC: KUN 35100 DCC
ORIGINATED: 2012-11-30 Hoppe	TITLE: Transportzeichnung Ventil	
CHECKED: 2012-11-30 Asbeck	shipping dwg valve	
RELEASED: 2012-11-30 Hoppe		
COPYRIGHT (C) Siemens AG 2010 ALL RIGHTS RESERVED	LANG-DRAWING NO. / VALUE DPPPG-70023755 12990-280170	
	REV: B	SHEET: 1 / 1