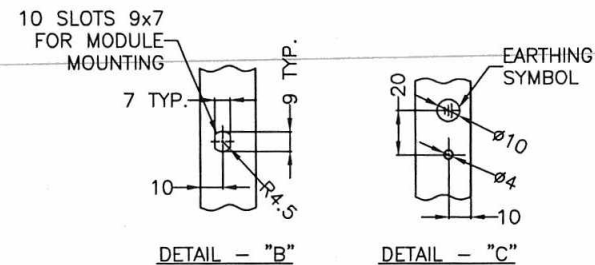
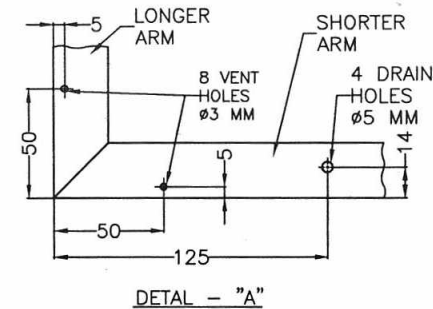
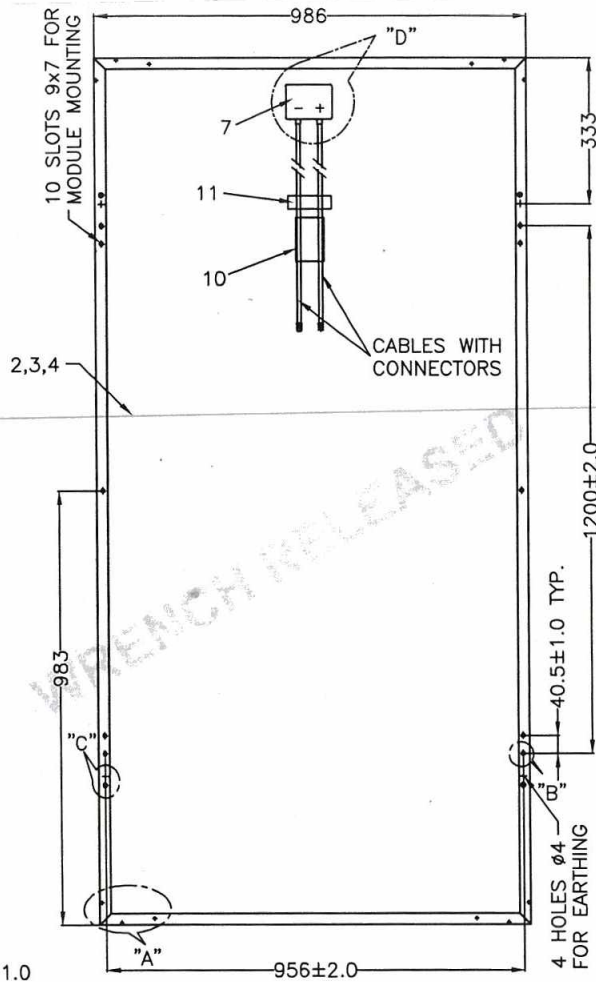
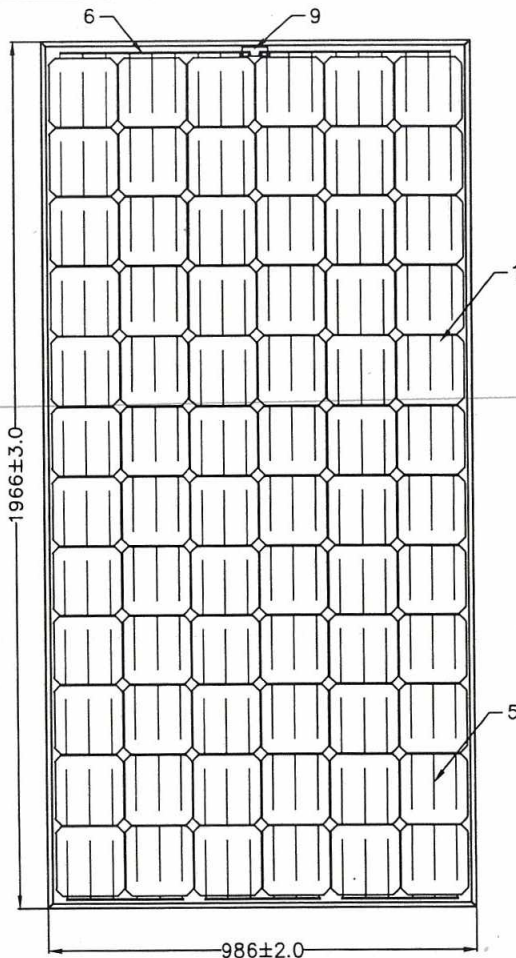


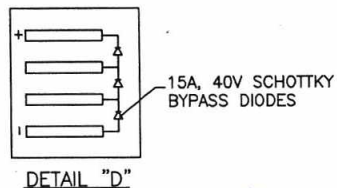
DRAWING NO. 3 679 02 00404

COPYRIGHT AND CONFIDENTIAL

The information on this document is the property of Bharat Heavy Electricals Limited. It must not be used directly or indirectly in anyway detrimental to the interest of the Company



PART	DESCRIPTION
11	RFID TAG
10	MODULE RATING STICKER
9	PV MODULE SL. NO. STICKER
8	ANODISED ALUMINIUM EDGE FRAME
7	JUNCTION BOX WITH CABLES & CONNECTORS
6	BUS BAR
5	INTERCONNECTS
4	BACK SHEET
3	EVA SHEET
2	HIGH TRANSMISSION TEMPERED GLASS
1	72 Nos. OF 156 mm MONO CRYSTALLINE SILICON SOLAR CELLS CONNECTED IN SERIES



TYPE OF PRODUCT OR NAME OF CUSTOMER/PROJECT

	NAME	SIGN.	DATE	No. OF VAR
DRN	SAN		280715	
CKD	SM		280715	
APPD	SR		280715	

DEPT. SC&PV FOR UNSPECIFIED-TOLERANCES REF ED 0230499

SCALE 1 : 10

WEIGHT(Kg)

REF. TO ASSY. DRG.

ITEM NO.

No. OF ITEM

REV.	DATE	ALTERED CHECKED	APPROVED	REV.	DATE	ALTERED CHECKED	APPROVED
				00			
				FIRST ISSUE			

TITLE: PHOTOVOLTAIC MODULE-L24270 156mm Mono Solar Cell (Corner Block Type)

DRAWING NO. 3 679 02 00404

SHEET NO. 01 NO. OF SHEETS 01



**PRODUCT STANDARD
ELECTRONICS DIVISION**

CD-4-4001- 128

REV. 00

A4-10

PAGE 01 OF 01

TECHNICAL SPECIFICATION FOR PV MODULE L24270 (24 V, 300 WATTS)

- 1. PV MODULE TYPE NO. : L24270
- 2. CONFIGURATION : SINGLE GLASS LAMINATED TYPE WITH WITH 72 NOS. OF 156-mm MONO CRYSTALLINE SILICON SOLAR CELLS (12*6) IN SERIES CONFIGURATION.
- 3. OVERALL SIZE : 1966 (±3) * 986 (±2) * 35 (±1) mm
- 4. WEIGHT : 25 Kg. (Typ.)
- 5. PV MODULE FRAME MATERIAL : ANODISED ALUMINIUM
- 6. JUNCTION BOX : IP65 GRADE JUNCTION BOX WITH CABLES AND CONNECTORS
- 7. RFID Tag : As per JNNSM Guidelines

8. TYPICAL ELECTRICAL CHARACTERISTICS :

- 8.1 OPEN CIRCUIT VOLTAGE (Voc) : 45.0 V
- 8.2 SHORT CIRCUIT CURRENT (Isc) : 8.8 A
- 8.3 VOLTAGE AT PEAK POWER POINT (Vmp) : 37 V
- 8.4 CURRENT AT PEAK POWER POINT (Imp) : 8.11 A
- 8.5 PEAK POWER OUTPUT (Pmax.) : 300 W
- 8.6 CELL EFFICIENCY : 17.4 %
- 8.7 MODULE EFFICIENCY : 15.5 %
- 8.8 FILL FACTOR : ≥ 0.70

NOTE :

- 1. Electrical specifications mentioned above are at Standard Test Conditions of 100 mW/sq. cm solar insolation (AM 1.5) and at 25 deg C temperature.
- 2. Measurement repeatability of peak power output: ± 3 %

COPY RIGHT AND CONFIDENTIAL
The information on this document is the property of Bharat Heavy Electrical Limited. It must not be used directly or indirectly in anyway detrimental to the interest of the company.

REVISION : (00)

APPROVED BY :
SR

PREPARED
SM

ISSUED
Engg.

DATE
18.03.2015