

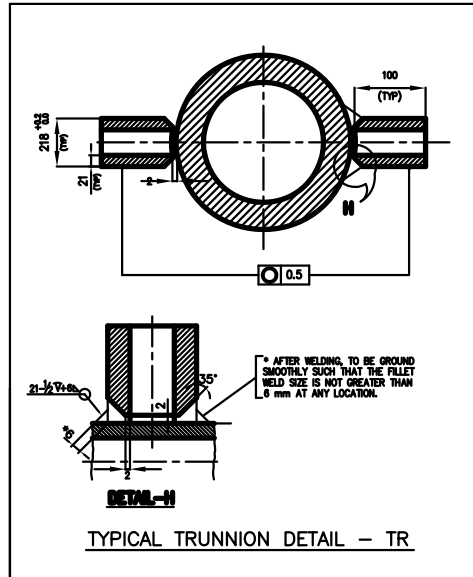
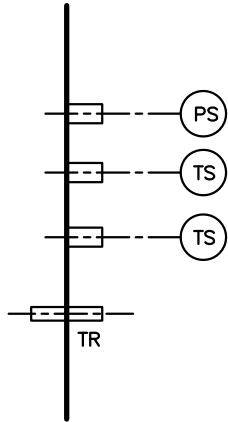
CAUTION THE INFORMATION ON THIS DOCUMENT IS THE PROPERTY OF BHARAT HEAVY ELECTRICALS LIMITED. IT MUST NOT BE USED DIRECTLY OR INDIRECTLY IN ANY WAY DETRIMENTAL TO THE INTEREST OF THE COMPANY

ATTACHMENT DESIGNATION

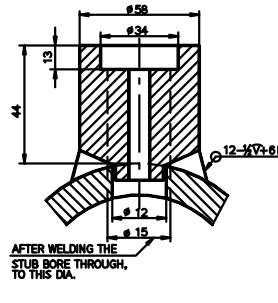
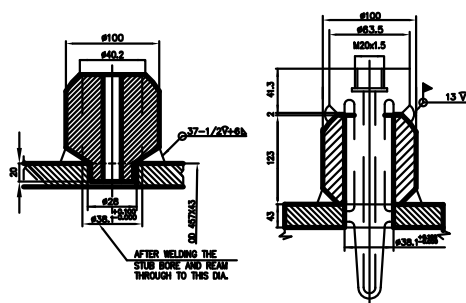
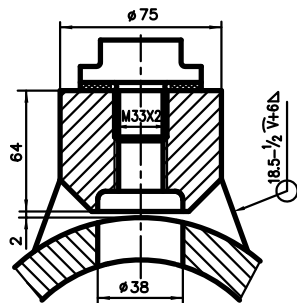
- TS – TEMP. STUB
- PS – PRESSURE STUB
- TR – TRUNNION

NOTES:

01. FOR EDGE PREPARATION REFER DRG NO:3-80-300-19825.
02. ALL PIPES ARE UNDER THE PURVIEW OF IBR AND TO BE SUPPLIED WITH FORM-3A
03. RAW MATERIAL FOR PIPES AND OTHER FITTINGS WILL BE SUPPLIED BY BHEL AS FINISHED COMPONENTS .
04. FOLLOW TDC:
05. FOLLOW BHEL APPLICABLE QP



| VAR. NO | OD RANGE in mm | THICKNESS RANGE in mm | MATERIAL | REMARKS |
|---------|----------------|-----------------------|------------|---------|
| 01 | 219.1 – 406.4 | 20-55 | SA 335 P91 | |
| 02 | 457 – 610 | 20-70 | SA 335 P91 | |
| 03 | 660 – 965 | 20-70 | SA 335 P91 | |



ALL DIMENSIONS SHOWN HERE ARE INDICATIVE ONLY. ACTUAL DIMENSIONS ARE AS INDICATED IN THE RESPECTIVE ISOMETRIC DRAWING.

BHEL-PIPING CENTRE-ENGINEERING

DRAWING NO

STRAIGHT PIPES WITH TRUNNION AND STUBS

DRAWING NO

PIPE-002

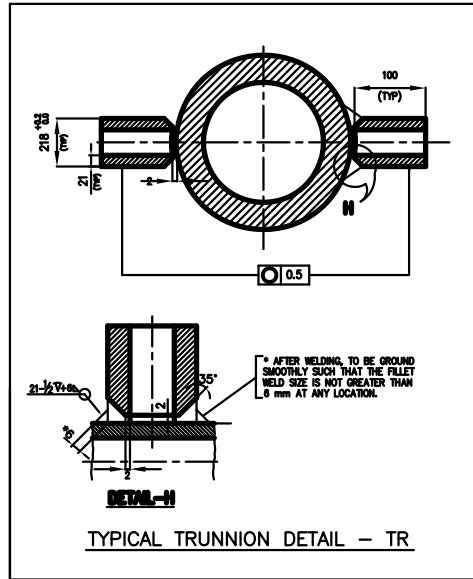
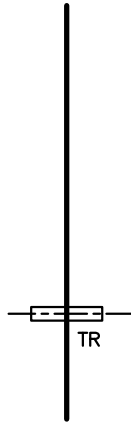
CAUTION THE INFORMATION ON THIS DOCUMENT IS THE PROPERTY OF BHARAT HEAVY ELECTRICALS LIMITED. IT MUST NOT BE USED DIRECTLY OR INDIRECTLY IN ANY WAY DETRIMENTAL TO THE INTEREST OF THE COMPANY

ATTACHMENT DESIGNATION

TR – TRUNNION

NOTES:

01. FOR EDGE PREPARATION REFER DRG NO:3-80-300-19825.
02. ALL PIPES ARE UNDER THE PURVIEW OF IBR AND TO BE SUPPLIED WITH FORM-3A
03. RAW MATERIAL FOR PIPES AND OTHER FITTINGS WILL BE SUPPLIED BY BHEL AS FINISHED COMPONENTS .
04. FOLLOW TDC:
05. FOLLOW BHEL APPLICABLE QP



| VAR. NO | OD RANGE in mm | THICKNESS RANGE in mm | MATERIAL | REMARKS |
|---------|----------------|-----------------------|------------|---------|
| 01 | 219.1 – 406.4 | 20-55 | SA 335 P91 | |
| 02 | 457 – 610 | 20-70 | SA 335 P91 | |
| 03 | 660 – 965 | 20-70 | SA 335 P91 | |

ALL DIMENSIONS SHOWN HERE ARE INDICATIVE ONLY. ACTUAL DIMENSIONS ARE AS INDICATED IN THE RESPECTIVE ISOMETRIC DRAWING.

BHEL-PIPING CENTRE-ENGINEERING

DRAWING NO

STRAIGHT PIPES WITH TRUNNION

DRAWING NO

PIPE-004

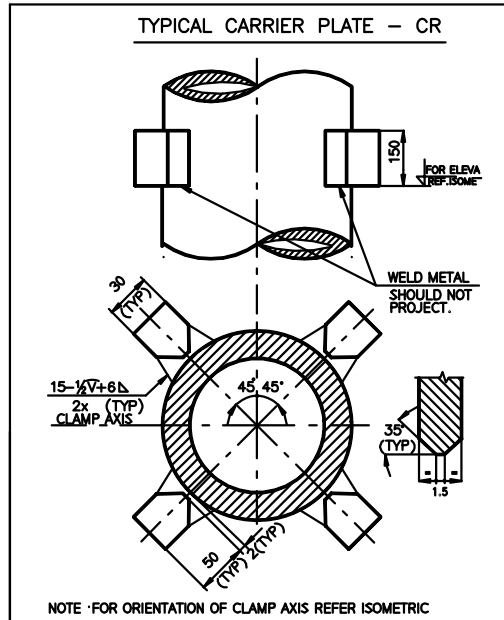
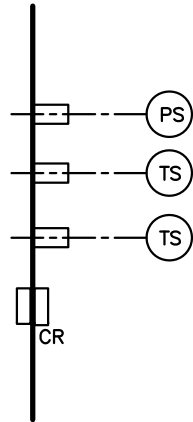
CAUTION THE INFORMATION ON THIS DOCUMENT IS THE PROPERTY OF BHARAT HEAVY ELECTRICALS LIMITED. IT MUST NOT BE USED DIRECTLY OR INDIRECTLY IN ANY WAY DETRIMENTAL TO THE INTEREST OF THE COMPANY

ATTACHMENT DESIGNATION

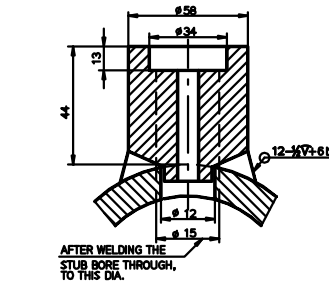
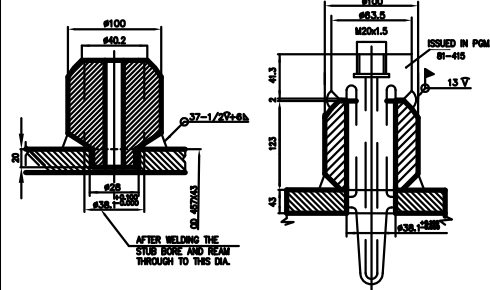
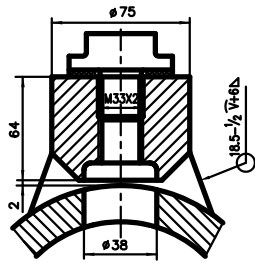
- TS – TEMP. STUB
- PS – PRESSURE STUB
- CR – CARRIER PLATE

NOTES:

01. FOR EDGE PREPARATION REFER DRG NO:3-80-300-19825.
02. ALL PIPES ARE UNDER THE PURVIEW OF IBR AND TO BE SUPPLIED WITH FORM-3A
03. RAW MATERIAL FOR PIPES AND OTHER FITTINGS WILL BE SUPPLIED BY BHEL AS FINISHED COMPONENTS .
04. FOLLOW TDC:
05. FOLLOW BHEL APPLICABLE QP



| VAR. NO | OD RANGE in mm | THICKNESS RANGE in mm | MATERIAL | REMARKS |
|---------|----------------|-----------------------|------------|---------|
| 01 | 219.1 – 406.4 | 20–55 | SA 335 P91 | |
| 02 | 457 – 610 | 20–70 | SA 335 P91 | |
| 03 | 660 – 965 | 20–70 | SA 335 P91 | |



ALL DIMENSIONS SHOWN HERE ARE INDICATIVE ONLY. ACTUAL DIMENSIONS ARE AS INDICATED IN THE RESPECTIVE ISOMETRIC DRAWING.

BHEL-PIPING CENTRE-ENGINEERING

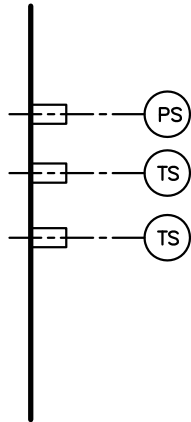
DRAWING NO

STRAIGHT PIPES WITH CARRIER PLATES AND STUBS

DRAWING NO

PIPE-003

CAUTION THE INFORMATION ON THIS DOCUMENT IS THE PROPERTY OF BHARAT HEAVY ELECTRICALS LIMITED. IT MUST NOT BE USED DIRECTLY OR INDIRECTLY IN ANY WAY DETRIMENTAL TO THE INTEREST OF THE COMPANY



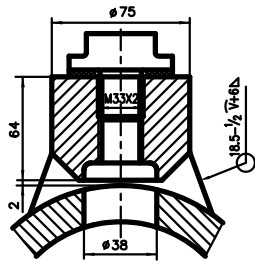
ATTACHMENT DESIGNATION

TS – TEMP. STUB
PS – PRESSURE. STUB

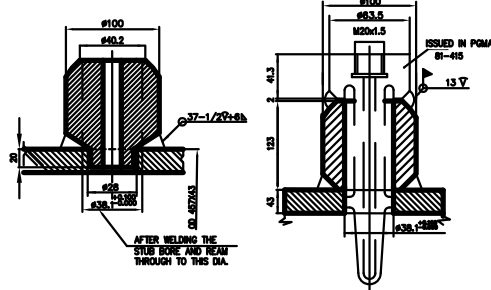
NOTES:

01. FOR EDGE PREPARATION REFER DRG NO:3-80-300-19825.
02. ALL PIPES ARE UNDER THE PURVIEW OF IBR AND TO BE SUPPLIED WITH FORM-3A
03. RAW MATERIAL FOR PIPES AND OTHER FITTINGS WILL BE SUPPLIED BY BHEL AS FINISHED COMPONENTS .
04. FOLLOW TDC:
05. FOLLOW BHEL APPLICABLE QP

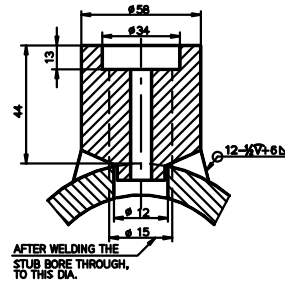
| VAR. NO | OD RANGE in mm | THICKNESS RANGE in mm | MATERIAL | REMARKS |
|---------|----------------|-----------------------|------------|---------|
| 01 | 219.1 – 406.4 | 20-55 | SA 335 P91 | |
| 02 | 457 – 610 | 20-70 | SA 335 P91 | |
| 03 | 660 – 965 | 20-70 | SA 335 P91 | |



TYPICAL TEMP. STUB WELDING DETAIL – TS



TYPICAL PRESSURE STUB – PS



ALL DIMENSIONS SHOWN HERE ARE INDICATIVE ONLY. ACTUAL DIMENSIONS ARE AS INDICATED IN THE RESPECTIVE ISOMETRIC DRAWING.

BHEL-PIPING CENTRE-ENGINEERING

DRAWING NO
STRAIGHT PIPES WITH STUBS

DRAWING NO
PIPE-006