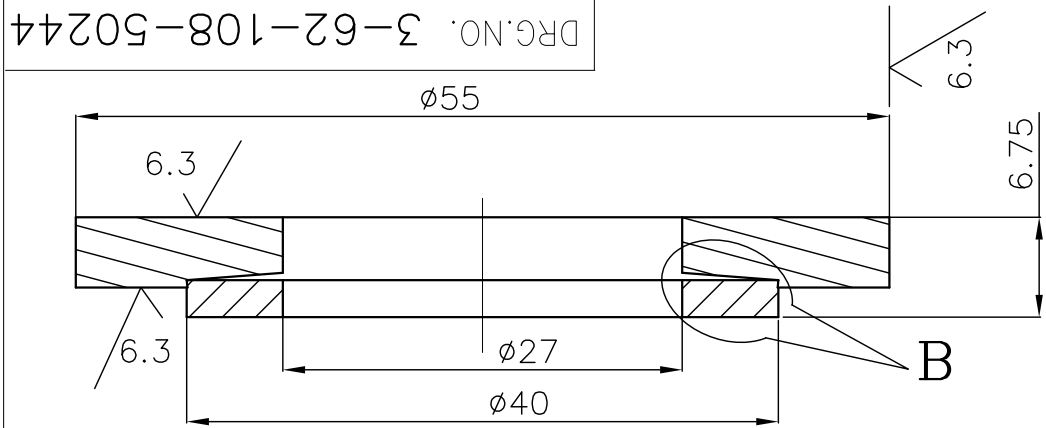


THE INFORMATION ON THIS DOCUMENT IS THE PROPERTY OF BHARAT HEAVY ELECTRICALS LTD. IT MUST NOT BE USED DIRECTLY OR INDIRECTLY IN ANY WAY DETRIMENTAL TO THE INTEREST OF THE COMPANY.

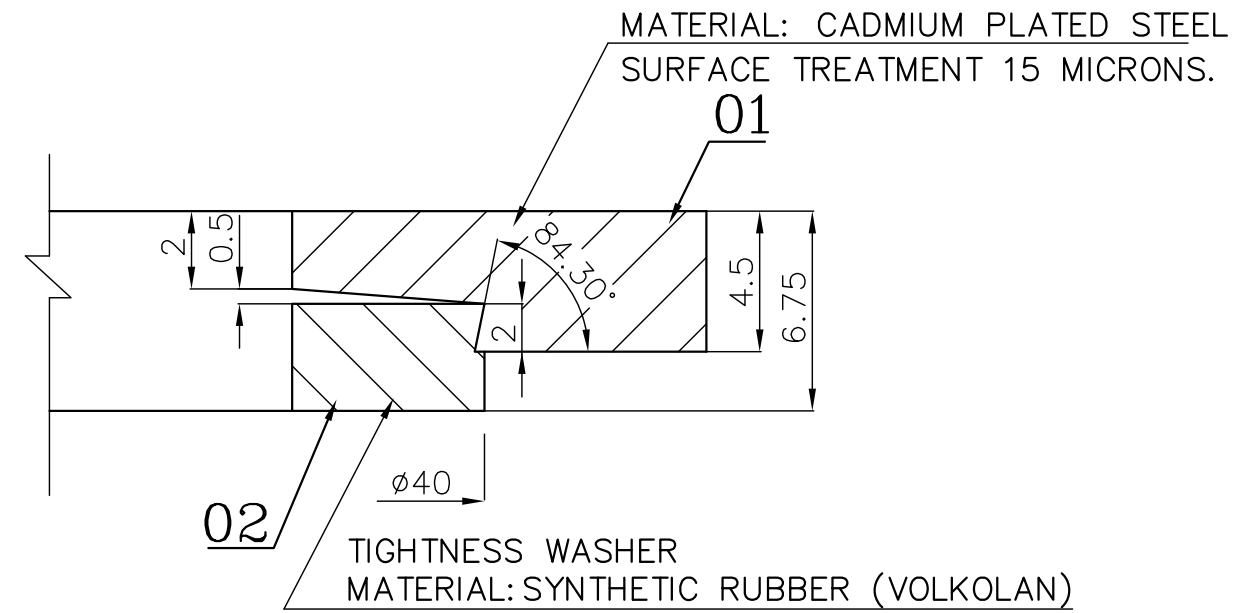
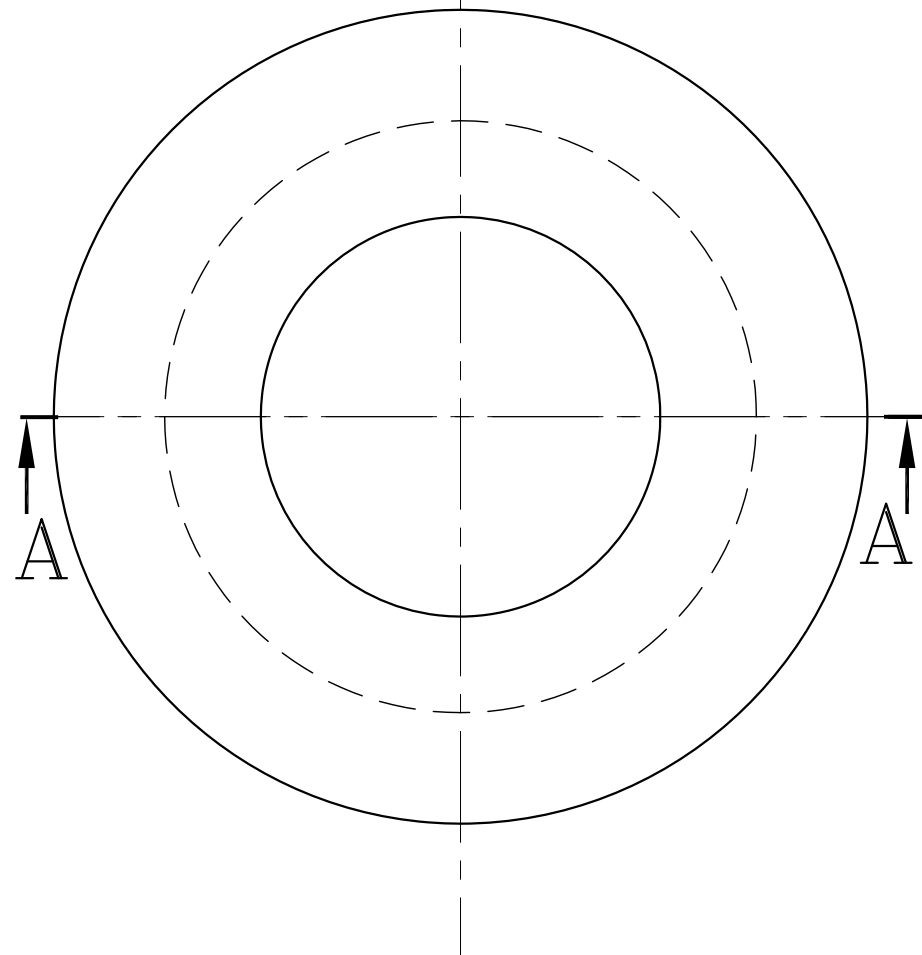
36250244.DWG FILE NAME

REF.DRG.NO.

INVENTORY NO.



SECTION A-A



02 TIGHTNESS WASHER MATERIAL: SYNTHETIC RUBBER (VOLKOLAN)

DETAIL-B

NOTE: SYNTHETIC RUBBER SHOULD WITH STAND 150°C TEMPERATURE AND SHOULD BE FLEXIBLE.  
HARDNES: SHORE A 85 TO 95.

ITEM NO	DESCRIPTION	DRAWING NO.	VAR. NO.	RAW MATERIAL SIZE OR CASTING DRG.NO. OR FORGING DRG.NO.	MATERIAL CODE	NET WT.	GROSS WT.
02	SYNTHETIC RUBBER RING			ø27X ø40	HYN599990060	0.01	
					VOLKALON		1
01	ROUND			ø63-8	AA1020208201	0.05	
					AA10208		1
					MATERIAL SPECN.	QUANTITY	

THE FOLLOWING CONDITIONS APPLY EXCEPT OTHERWISE STATED...

- REF.TO HY0230261 FOR UNSPECIFIED TOLERANCES.
- CHAMFER M/CD SHARP EDGES 1.2 TO 1.0 AT 45°.
- INTERNAL M/CD CORNER RADII 1 TO 0.7.
- THE SURFACE ROUGHNESS WHEREVER NOT SHOWN SHALL BE TAKEN FROM THE SURFACE ROUGHNESS SHOWN OUT SIDE BACK SLASHES GIVEN AT THE TOP MOST RIGHT CORNER OF THE DRG.

TYPE OF PRODUCT OR NAME OF CUSTOMER/PROJECT **BBD 4772/4760 TUBE MILL**

DRN.	NAME	SIGN.	DATE	NO.OF VAR.
	RAZVI		1.8.02	
CHD.	G.S.N.M.RAO		1.8.02	
APPD.	T.M.R		1.8.02	

DEPT.	PULVE.ENGG	SCALE	WEIGHT (KG)	REF. TO ASSY DRG.	ITEM NO.	NO.OF ITEMS
		1:2	0.06	0.62.109.50721	15	39

TITLE	DRAWING NO.	REV.
<b>WASHER</b> (FOR SHELL LINER BOLT)	3-62-108-50244	03
	SHEET NO. 01	NO OF SHEETS 01

REV.	DATE	ALTERED	BGK	REV.	DATE	ALTERED	RAZVI
03	15.5.19	CHD. KCM	APPD. SG	02	1.8.02	CHD.G.S.N.M.R	APPD. T.M.R
ZONE	GRAPHICS UPDATED.			ZONE	DRAWN REDRAWN ON AUTOCAD INCORPORATING EARILIEAR CHANGES		