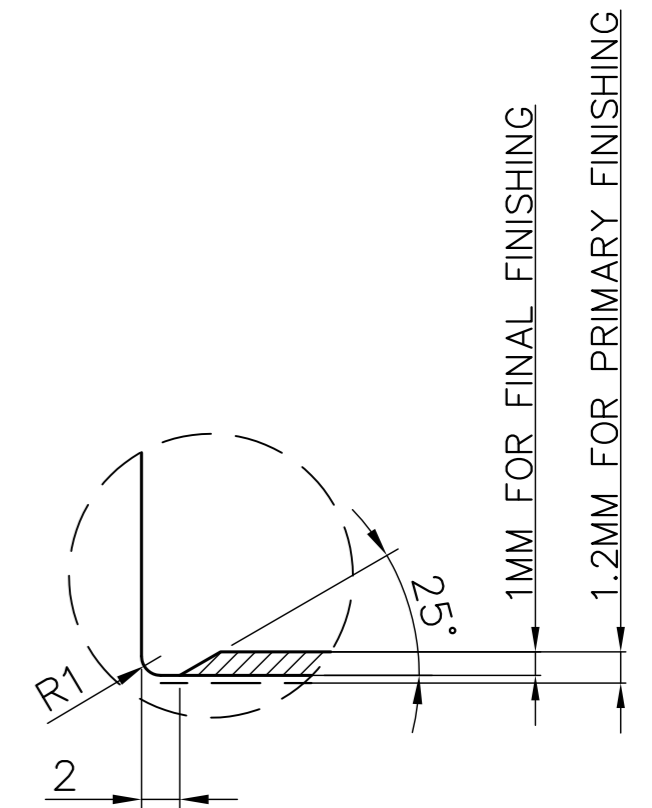
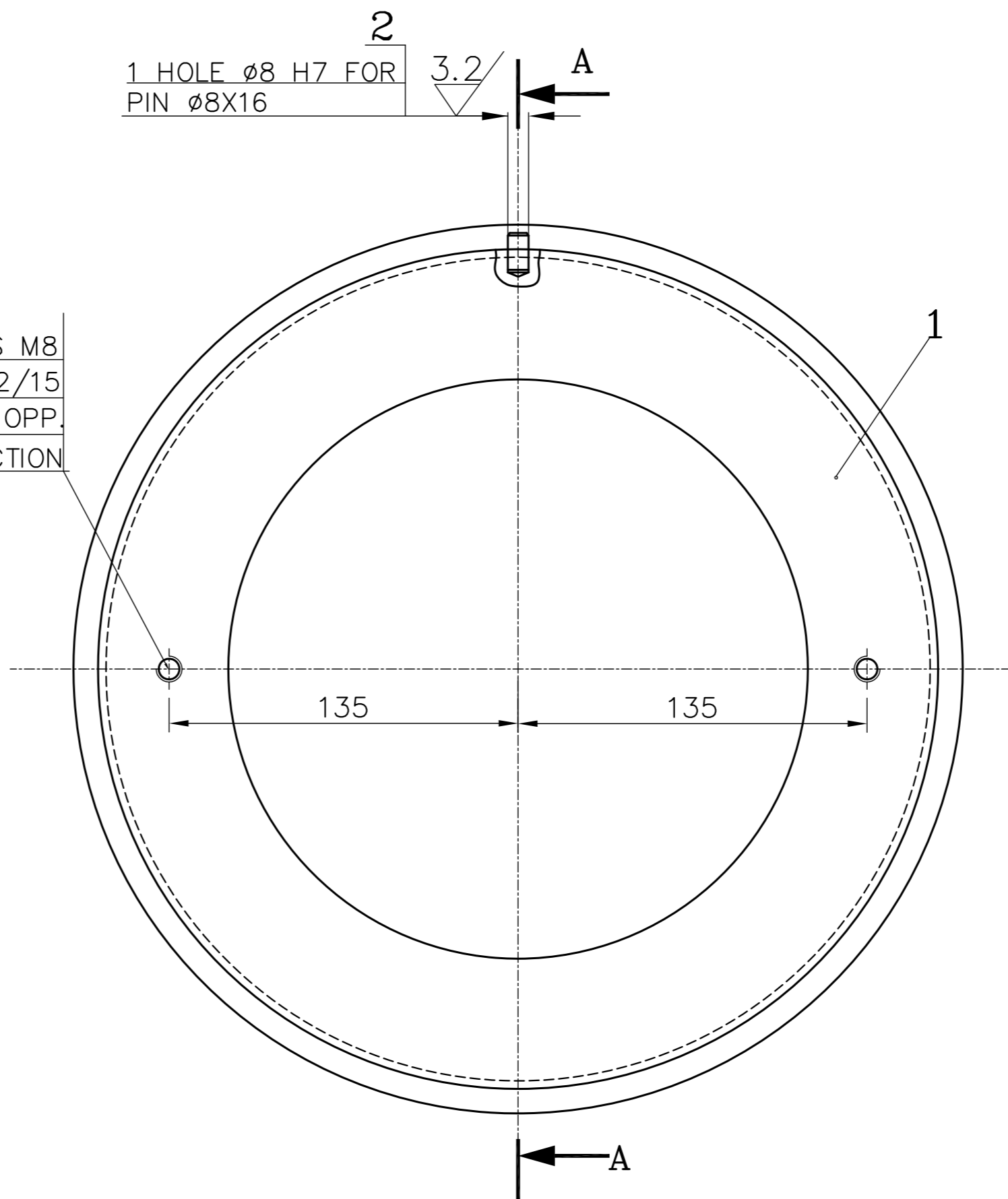


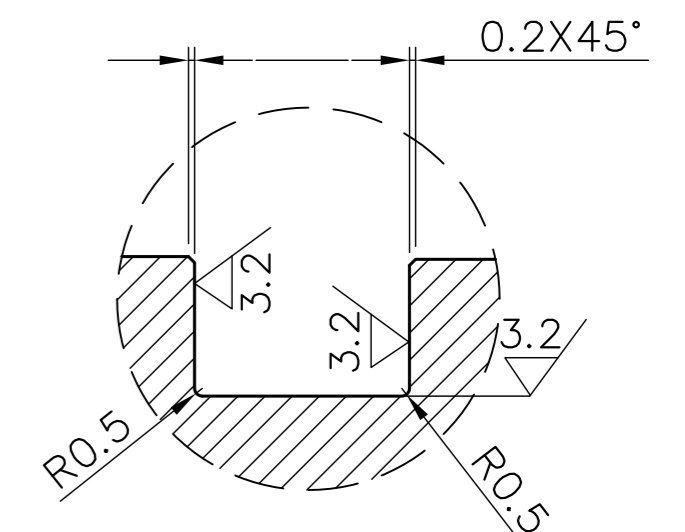
SECTION A-A

2 HOLES M8
DEPTH 12/15
DIAGONALLY OPP.
FOR EXTRACTION

1 HOLE ø8 H7 FOR
PIN ø8X16



DETAIL D



DETAIL C

NOTE

1. FORGED LAB SEAL MATL: X12CR13
2. MATL HARDNESS HB: 200 MAX
3. QUALITY CHECKS & TEST REPORTS SHALL BE AS PER SOE97438/4

TYPE OF PRODUCT OR NAME OF CUSTOMER/PROJECT



DRN.	KVS	SIGN.		DATE	30.10.20	NO. OF VAR.
CHD.	NEMA				30.10.20	
APPD.	YVRL				30.10.20	

DEPT. COMPR. CODE	UNTOL. DIMS. GR. C/M/F	SCALE	WEIGHT (KG)	REF. TO ASSY. DRG.	ITEM NO.	NO. OF ITEMS
420		NTS	35	-N.A.-	-N.A.-	-N.A.-

TITLE	CARD CODE	DRAWING NO.	REV.
LAB SEAL ON BALANCE DRUM (ABRADABLE)	N.A.	2-331-24-00262	00
SHT. No 01		NO. OF SHT. 01	

INVENTORY NO. SIGN. AND DATE REF. DRG. NO. COMPUTER FILE NAME THE INFORMATION ON THIS DOCUMENT IS THE PROPERTY OF BHARAT HEAVY ELECTRICALS LIMITED. IT MUST NOT BE USED DIRECTLY OR INDIRECTLY IN ANY WAY DETRIMENTAL TO THE INTEREST OF THE COMPANY

GENERAL DIMENSIONAL LIMITS, FITS & TOLERANCES AS PER HY0230261