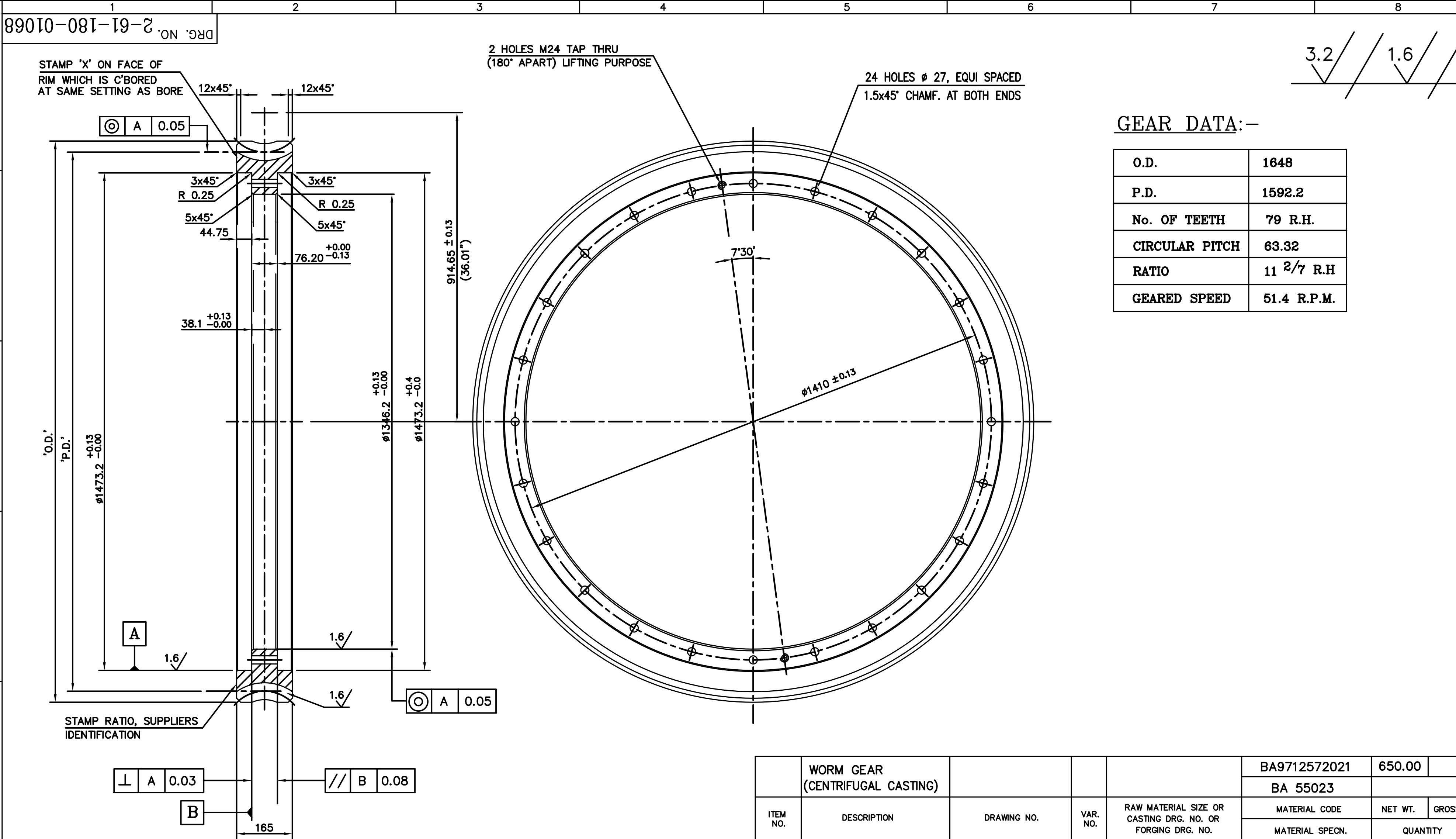


INVENTORY NO. SIGN. AND DATE REF. DRG. NO. COMP. FILE No. 26101068.DWG

THE INFORMATION ON THIS DOCUMENT IS THE PROPERTY OF BHARAT HEAVY ELECTRICALS LIMITED. IT MUST NOT BE USED DIRECTLY OR INDIRECTLY IN ANY WAY DETRIMENTAL TO THE INTERESTS OF THE COMPANY.

(ALL DIMENSIONS ARE IN mm)



NOTES:-

01. FOR SHAFT TECHNICAL DETAILS REFER BA55023
02. REFER DRG No. 1-61-180-00511 FOR SHAFT DETAILS



REV.	DATE	ALTERED	APPD.	REV.	DATE	ALTERED	APPD.
04	31.7.03	CHD.		03	2K.05.11	CHD.	
ZONE Ø27 WAS Ø32. REAM TO Ø32 H7 IN ASSY DELETED.				ZONE DRG CONVERTED INTO METRIC SYSTEM DRG REDRAWN BY INCORPORATING ALL PREVIOUS REV.			

THE FOLLOWING CONDITIONS APPLY EXCEPT OTHERWISE STATED.

- REF. TO HY0230261 FOR UNSPECIFIED TOLERANCES.
- CHAMFER M/CD. SHARP EDGES 1.2 AT 45°.
- INTERNAL M/CD. CORNER RADII 1 T
- THE SURFACE ROUGHNESS WHERE-EVER NOT SHOWN SHALL BE TAKEN FROM THE SURFACE ROUGHNESS SHOWN OUT SIDE THE BACK SLASH GIVEN OR THE TOP MOST RIGHT CORNER OF THE DRG.

TYPE OF PRODUCT
NAME OF CUSTOMER/PROJECT

HP 803 MILL

<div>११५५५५५५</div> <div></div>				BHARAT HEAVY ELECTRICALS LIMITED HYDERABAD		<div>DRN.</div> <div>E.M.ASHOK</div>		<div>SIGN.</div> <div></div>		<div>DATE</div> <div>30.12.06</div>		<div>NO.OF VAR.</div> <div></div>			
				<div>CHD.</div> <div>AMAN</div>				<div>30.12.06</div>				<div>NA</div>			
				<div>APPD.</div> <div>RAMANNA</div>				<div>30.12.06</div>							
<div>EPT.</div> <div>446</div>		<div>UNTOL. DIMS. GR.</div> <div>Ø/M/F</div>		<div></div>		<div>SCALE</div> <div>1:8</div>		<div>WEIGHT (KG)</div> <div>650.00</div>		<div>REF. TO ASSY DRG.</div> <div>NA</div>		<div>ITEM NO.</div> <div>NA</div>		<div>NO.OF ITEMS</div> <div>NA</div>	
<div>CODE</div> <div>ULVE ENGG</div>														<div>REV.</div> <div>04</div>	
<div>TITLE</div> <div>WORM GEAR</div>								<div>CARD CODE</div> <div>NA</div>		<div>DRAWING NO.</div> <div>2-61-180-01068</div>					
								<div>SHEET NO.</div> <div>01</div>		<div>NO OF SHEETS</div> <div>01</div>					