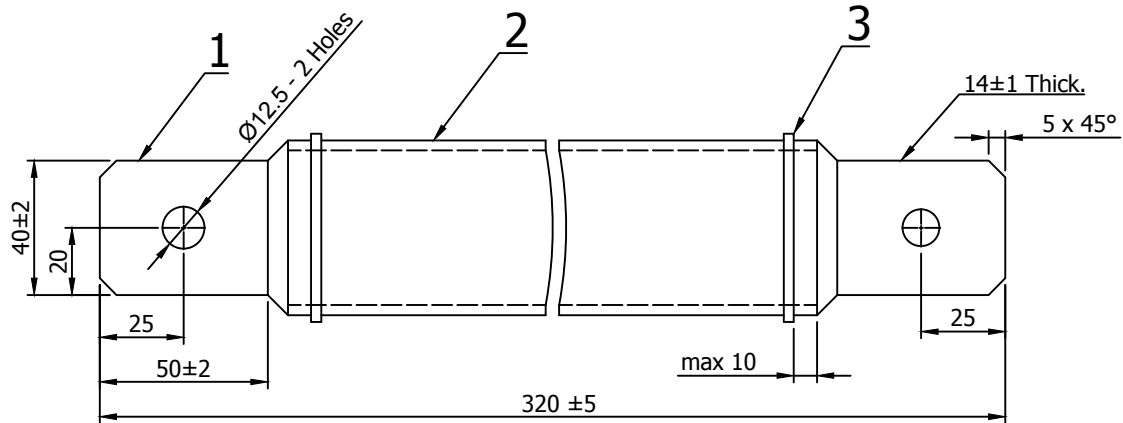


FIRST ANGLE PROJECTION

(ALL DIMENSIONS ARE IN MM)

REV.	DATE	ALTERED	REV.	DATE	ALTERED	REV.	DATE	ALTERED
		CHECKED			CHECKED			CHECKED
		APPROVED			APPROVED			APPROVED



1. Copper Braid
Type: 50/35
Cross Section : 350 mm²
2. Insulating Sleeve Type: 25/50
Material: Glass Silk Braided Hose / Silicone Rubber.
Working Temp. : -70 To 200° C
Nominal Voltage : 2.5 Kv
Breaking Voltage : 7.5 Kv
Colour : Black
3. Cable Tie with Metal Barb
Material: Polyamide
Dimensions : 140 x 3.6 mm

Note: Finish :- Connection Surface Electro Tin Plated to 15 microns.

QTY.	ITEM NO.	DESCRIPTION	DRAWING No.	ITEM	MATERIAL CODE	A	UNIT Wt. (Kgs.)
				VAR.	MATERIAL SPECN.	C	QTY.



BHARAT HEAVY ELECTRICALS LIMITED.
ELECTRONICS DIVISION, BANGALORE

DRN	NAME	SIGN.	DATE	No. OF VAR
CKD	T K Murthy		28.11.19	
APPD	Krishna VVNSSRM		29.11.19	
	Shekar R		29.11.19	

DEPT. TE	FOR UNSPECIFIED TOLERANCES	SCALE	WEIGHT (Kg)	REF. TO ASSY. DRG.	ITEM NO.	No. OF ITEM
CODE 445	REFER ED 0230499					

TITLE

**Copper Braided Insulated
Cable - 350 mm Sq**

DRAWING NO.

4 668 08 00792

REV.

00

SHEET NO.

01

NO. OF SHEETS

01

A4 SIZE

COPYRIGHT AND CONFIDENTIAL
The information on this document is the property of Bharat Heavy Electricals Limited.
It must not be used directly or indirectly in anyway detrimental to the interest of the Company

3EHP431282 R0001
REF. DRG. NO.

SIGN & DATE

INVENTORY NO.