

COPYRIGHT AND CONFIDENTIAL

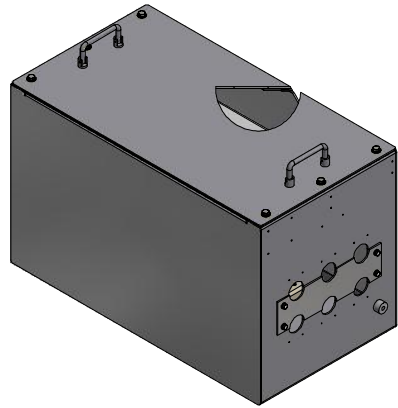
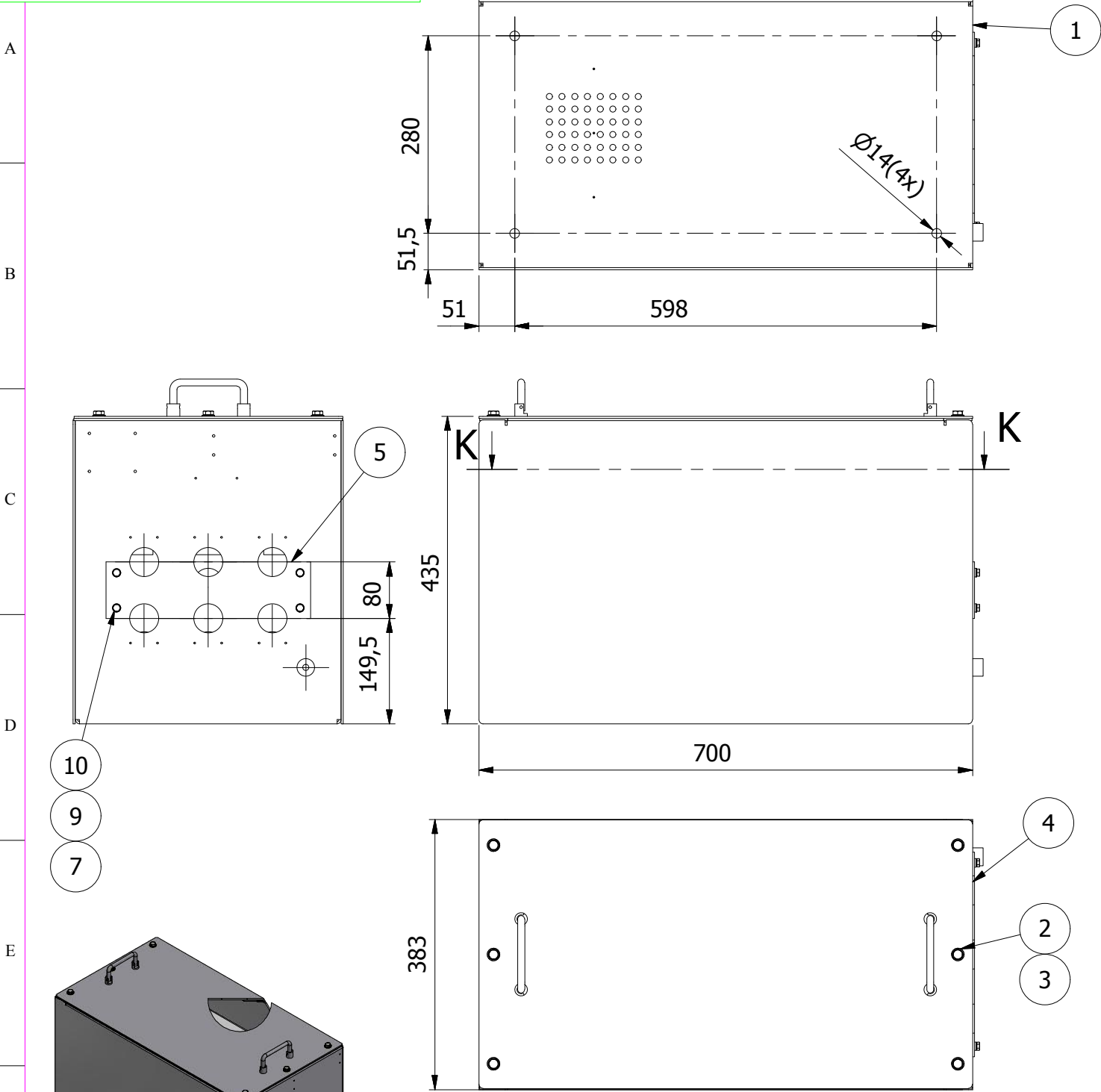
The information on this document is the property of Bharat Heavy Electricals Limited.  
It must not be used directly or indirectly in anyway detrimental to the interest of the Company

REF. DRG.NO.  
36680800213

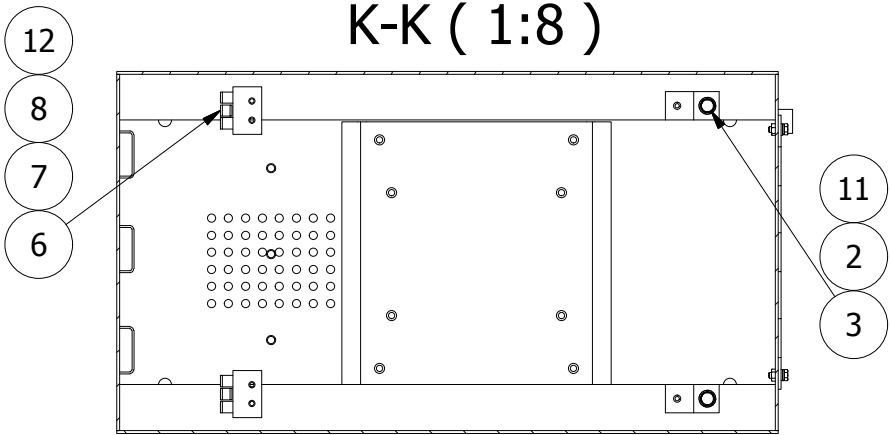
SIGN & DATE

INVENTORY NO.

3 668 08 00213  
DRAWING NO.



PARTS LIST			
ITEM	QTY	PART NUMBER	DESCRIPTION
1	1	3 668 08 00210	BASE COVER ASSY
2	8	NF E25-511 M8	M8 contact washer
3	8	DIN 933 - M8 x 20	Hex-Head Bolt
4	1	3 668 08 00212	TOP COVER ASSY.
5	1	4 668 08 00747	GLAND PLATE FOR OUTPUT PANEL
6	2	DIRAK PART NO.-219-9001	SCREW ON HINGE FOR DIRAK LOCKING ARRGT
7	10	DIN 125 - A 6.4	Washer
8	6	DIN 934 - M6	Hex Nut
9	4	DIN 128 - A6	Spring Washer
10	4	DIN 933 - M6 x 16	Hex-Head Bolt
11	2	4 668 08 00749	Z BRACKET (FOR RESISTOR ASSY.)
12	2	4 668 08 00748	HINGE BRACKET (FOR RESISTOR ASSY.)



QTY.	ITEM No.	DESCRIPTION	DRAWING NO.	ITEM No.	MATERIAL CODE	UT.Wt. (kgs)
				VARI ANT	MATERIAL SPECN.	QTY.

CARD TYPE 2

CARD TYPE 1

		BHARAT HEAVY ELECTRICALS LIMITED. ELECTRONICS DIVISION, BANGALORE		DRN	NAME	SIGN.	DATE	No. OF	
				CKD	RAJU		19-04-2011		
				APPD	SCS		20-04-2011		
DEPT. TE	FOR UNSPECIFIED-TOLERANCES REFER ED 0230499	SCALE	WEIGHT(Kg)	REF. TO ASSY. DRG.		ITEM NO.	No. OF		
CODE 445		1:8							
TITLE					DRAWING NO.			REV.	
OUTPUT CONTACTOR ASSY (EMPTY PANEL)					3 668 08 00213				
					SHEET NO. 01	NO. OF SHEETS 01			