

TECHNICAL SPECIFICATIONS

Note for all the items: Apart from the specified brands, equivalent brands as acceptable to BHEL will also be considered

CHARGED AUTOMOTIVE BATTERY- 12Volt,100Ah

SPECIFICATIONS AND TECHNICAL REQUIREMENTS

1. FULLY CHARGED CONDITION IN POLYPROPYLENE CONTAINER
2. APPROXIMATE SIZE:410*176*233(L*B*H)
3. MAKE OF THE BATTERY: EXIDE XPRESS/AMARON AND EQUIVALENT
4. WARRANTY: MINIMUM 2 YEARS REQUIRED.

DURING WARRANTY PERIOD IF ANY PROBLEM/FAULT OCCURS IN THE BATTERY, VENDOR SHOULD RECTIFY OR REPLACE THE DEFECTIVE ITEM IN FREE OF COST.

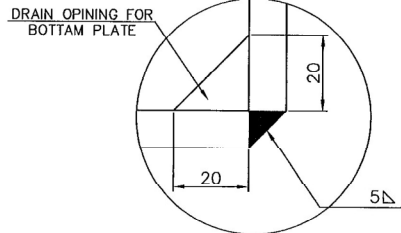
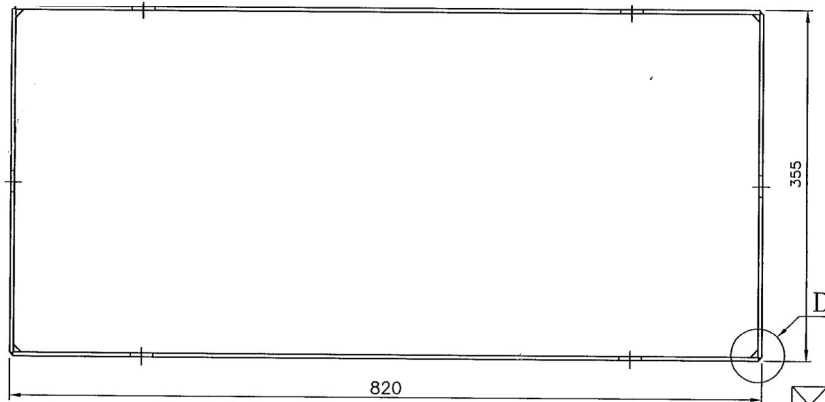
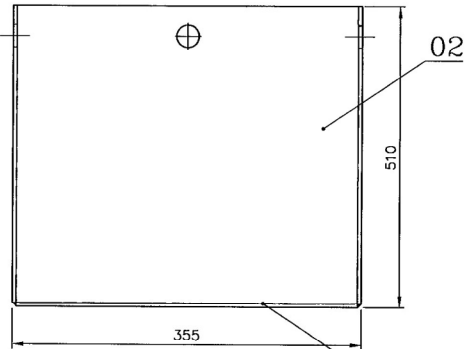
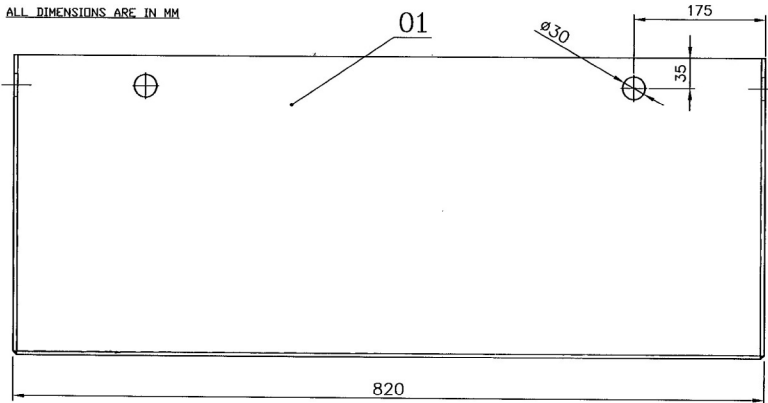
DRY TRACTION BATTERY- 30VOLT, 290AH

SPECIFICATIONS AND TECHNICAL REQUIREMENTS

1. VOLTAGE: 30 VOLT
2. AMP.HR.AND RATE OF DISCHARGE: 290 AMP.HR AT 5 HR RATE OF DISCHARGE
3. NO. OF CELLS: 15
4. CELL CONTAINER MATERIAL: HEAT SEALED POLYPROPYLENE.
5. LID: POLYPROPYLENE MATERIAL-TOP VENT PLUG WITH BASKET TYPE INDICATOR.
6. CELL SEPARATOR MATERIALS: POLYETHYLENE
7. BATTERY TRAY DIMENSION: AS PER ENCLOSED DRAWING NO. 3-M-02B-01-12333
8. TRAY MATERIAL: STEEL
9. TERMINAL TAKE OFF CABLES: 2 METRES LENGTH.
10. MAKE OF THE BATTERY: MAKE: EXIDE/UNION/LUMINOUS AND EQUIVALENT
11. APPLICATION: JOST AND JALDOOT PT 2 TON 3 WHEELER
12. CORRUGATED PLASTIC SEPERATORS SHOULD BE INSERTED BETWEEN CELLS AND BATTERY TRAY ON ALL SIDES TO A THICKNESS OF MINIMUM 10MM AND THE SEPERATOR HEIGHT SHOULD BE HIGHER THAN THE CELL TOP TO A HEIGHT OF 10MM.

CAUTION: THESE DRAWINGS ARE THE PROPERTY OF JIRAWAT HEAVY ELECTRICALS LIMITED AND SHOULD NOT BE LOANED, REPRODUCED, COPIED, OR USED FOR ANY PURPOSE WITHOUT THE WRITTEN PERMISSION OF JIRAWAT HEAVY ELECTRICALS LIMITED. (P/2003/001) - 001/001

ALL DIMENSIONS ARE IN MM



DETAIL-D

NOTE: ALL HOLES ARE ø30

01	PL5tx345x810	Fe410WA	IS: 2062	10.96	03
02	PL5tx345x505	Fe410WA	IS: 2062	13.67	02
02	PL5tx505x810	Fe410WA	IS: 2062	31.79	01

355x510x820		56.42			
No. of Pcs	DESCRIPTION	MATERIAL	STANDARD	NET.WT.IN KGS.	DRAWING No.
REFERENCE:					ITEM No.
SCALE:	DRAWN: <i>T.T. Balan</i>				
	CHECKED: <i>R. Ramamorthy</i>				
	APPROVED: <i>[Signature]</i>				
	DATE: 30.08.2003				
MACHINE: AUTOMOBILES			TYPE: JIRAWO (PLT-2T)		
TITLE: BATTERY CONTAINER			DRAWING No. 3-M-02B-12333		
			REV. 01		
			No of Sheets Sheet No		

✓/✓/✓

DRY TRACTION BATTERY- 36VOLT, 300AH

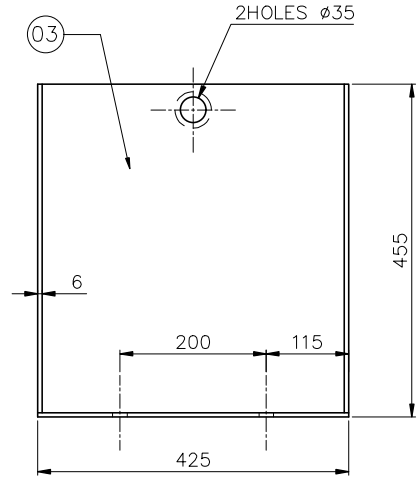
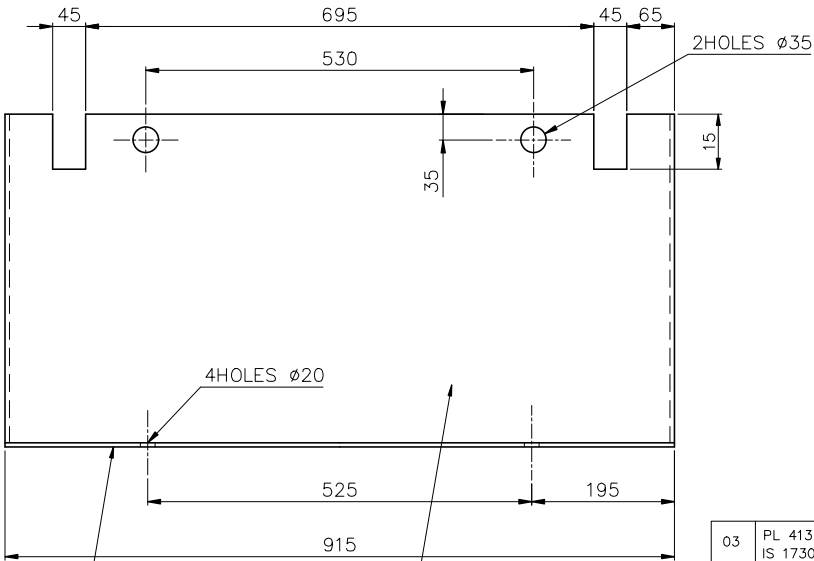
SPECIFICATIONS AND TECHNICAL REQUIREMENTS

1. VOLTAGE: 36 VOLT
2. AMP.HR.AND RATE OF DISCHARGE: 300 AMP.HR AT 5 HR RATE OF DISCHARGE
3. NO. OF CELLS: 18
4. CELL CONTAINER MATERIAL: HEAT SEALED POLYPROPYLENE.
5. LID: POLYPROPYLENE MATERIAL-TOP VENT PLUG WITH BASKET TYPE INDICATOR.
6. CELL SEPARATOR MATERIALS: POLYETHYLENE
7. BATTERY TRAY DIMENSION: AS PER ENCLOSED DRAWING NO. 3-M-02B-07-16371
8. TRAY MATERIAL: STEEL
9. TERMINAL TAKE OFF CABLES: 2 METRES LENGTH.
10. MAKE OF THE BATTERY: MAKE: EXIDE/UNION/LUMINOUS AND EQUIVALENT
11. APPLICATION: JOST TRANSLOADER 2TON 4 WHEELER
12. CORRUGATED PLASTIC SEPERATORS SHOULD BE INSERTED BETWEEN CELLS AND BATTERY TRAY ON ALL SIDES TO A THICKNESS OF MINIMUM 10MM AND THE SEPERATOR HEIGHT SHOULD BE HIGHER THAN THE CELL TOP TO A HEIGHT OF 10MM.

ALL DIMENSIONS ARE IN MILLIMETRES

3-M-02B07-16371
DRAWING NO.

3.2/



01

02

NOTE :-

- 01. ALL JOINTS ARE WELDED.
- 02. SHARP CORNERS TO BE REMOVED

REV	DATE	ALTERED
		CHECKED
		APPROVED
ZONE		

CAUTION: THE INFORMATION ON THIS DOCUMENT IS THE PROPERTY OF BHARAT HEAVY ELECTRICALS LTD. IT MUST NOT BE USED DIRECTLY OR INDIRECTLY IN ANY WAY DETRIMENTAL TO THE INTEREST OF THE COMPANY.

ITEM NO	DESCRIPTION	DRAWING NO	MATL CODE	UNIT WT
03	PL 413 x 449 x 6 IS 1730	-	IS 2062	8.73
			E 250 A	2
02	PL 915 x 449 x 6 IS 1730	-	IS 2062	19.35
			E 250 A	2
01	PL 915 x 425 x 6 IS 1730	-	IS 2062	18.32
			E 250 A	1
ITEM NO	DESCRIPTION	DRAWING NO	MATL SPEC	QTY

EQPT: AUTOMOBILES / MISC

		Bharat Heavy Electricals Ltd HIGH PRESSURE BOILER PLANT TIRUCHIRAPALLI - 620014		DRN	N.MADHUVIYERAN	SIGNATURE	<i>N.Madhuviyeran</i>	DATE	09.03.23
CHD	A.DANASEKAR	APPD	A.DANASEKAR						10.03.23
DEPT	M&S	GRADE OF UNTOL DIM	IS 2102	SCALE	1:5	WEIGHT (Kg)	74.00	REF TO ASSY DWG NO	-
CODE	2597							REF TO OLD DWG NO	-
TITLE BATTERY TRAY (36V - 300Ah) (JOSTS / 2TON)		CARD CODE	U 01	DRAWING NO :		3-M-02B07-16371		REV	00

A3-SIZE

DRY TRACTION BATTERY- 36VOLT, 290AH

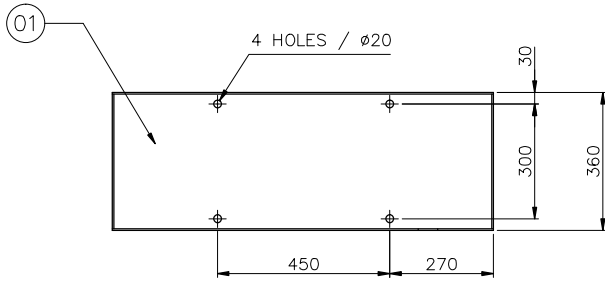
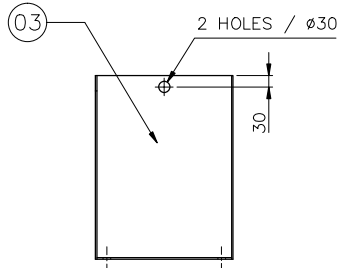
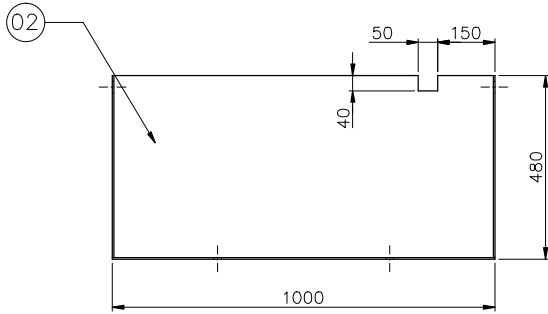
SPECIFICATIONS AND TECHNICAL REQUIREMENTS

1. VOLTAGE: 36 VOLT
2. AMP.HR.AND RATE OF DISCHARGE: 290 AMP.HR AT 5 HR RATE OF DISCHARGE
3. NO. OF CELLS: 18
4. CELL CONTAINER MATERIAL: HEAT SEALED POLYPROPYLENE.
5. LID: POLYPROPYLENE MATERIAL-TOP VENT PLUG WITH BASKET TYPE INDICATOR.
6. CELL SEPARATOR MATERIALS: POLYETHYLENE
7. BATTERY TRAY DIMENSION: AS PER ENCLOSED DRAWING NO. 3-M-02B-07-15320
8. TRAY MATERIAL: STEEL
9. TERMINAL TAKE OFF CABLES: 2 METRES LENGTH.
10. MAKE OF THE BATTERY: MAKE: EXIDE/UNION/LUMINOUS AND EQUIVALENT
11. APPLICATION: MACNEIL TRANSLOADER MODEL-2120LX
12. CORRUGATED PLASTIC SEPERATORS SHOULD BE INSERTED BETWEEN CELLS AND BATTERY TRAY ON ALL SIDES TO A THICKNESS OF MINIMUM 10MM AND THE SEPERATOR HEIGHT SHOULD BE HIGHER THAN THE CELL TOP TO A HEIGHT OF 10MM.

ALL DIMENSIONS ARE IN MILLIMETRES

3.2/

3-M-02B07-15320 DRAWING NO:



NOTE :-

- 01. ALL JOINTS ARE WELDED.
- 02. SHARP CORNERS TO BE REMOVED

03	PL 476 x 352 x 5 IS 1730	—	IS 2062	6.57
			E 250 A	2
02	PL 1000 x 476 x 5 IS 1730	—	IS 2062	18.68
			E 250 A	2
01	PL 1000 x 360 x 5 IS 1730	—	IS 2062	14.13
			E 250 A	1
ITEM NO	DESCRIPTION	DRAWING NO	MATL CODE	UNIT WT
			MATL SPEC	QTY

EQPT: AUTOMOBILES / MISC		NAME: N.MADHUVIYERAN		SIGNATURE: <i>N. Madhuvieran</i>		DATE: 22/08/14	
Bharat Heavy Electricals Ltd		DRN: G.GOVINDARAJ		CHD: <i>G. Govindaraj</i>		DATE: 22/08/14	
HIGH PRESSURE BOILER PLANT		APPD: G.THAGARAJAN		APPD: <i>G. Thagarajan</i>		DATE: 22/08/14	
TIRUCHIRAPALLI - 620014							

CAUTION: THE INFORMATION ON THIS DOCUMENT IS THE PROPERTY OF BHARAT HEAVY ELECTRICALS LTD. IT MUST NOT BE USED DIRECTLY OR INDIRECTLY IN ANY WAY DETRIMENTAL TO THE INTEREST OF THE COMPANY.

REV	DATE	ALTERED	CHECKED	APPROVED
ZONE				

DEPT	M&S	GRADE OF UNTOL DIM	SCALE	WEIGHT (Kg)	REF TO ASSY DWG NO	ITEM
2597	ϕ/M/ϕ	IS: 2102	1:10	64.63	REF TO OLD DWG NO	—
TITLE	CARD CODE	DRAWING NO :	REV			
BATTERY TRAY (36V - 290Ah)	U 01	3-M-02B07-15320	00			

A3-SIZE

DRY TRACTION BATTERY- 48VOLT, 240AH

SPECIFICATIONS AND TECHNICAL REQUIREMENTS

1. VOLTAGE: 48 VOLT
2. AMP.HR.AND RATE OF DISCHARGE: 240 AMP.HR AT 5 HR RATE OF DISCHARGE
3. NO. OF CELLS: 24
4. CELL CONTAINER MATERIAL: HEAT SEALED POLYPROPYLENE.
5. LID: POLYPROPYLENE MATERIAL-TOP VENT PLUG WITH BASKET TYPE INDICATOR.
6. CELL SEPARATOR MATERIALS: POLYETHYLENE
7. BATTERY TRAY DIMENSION: AS PER ENCLOSED DRAWING NO. 3-M-02B-07-14632
8. TRAY MATERIAL: STEEL
9. TERMINAL TAKE OFF CABLES: 2 METRES LENGTH (2 OUTPUT SET EACH 24V)
10. MAKE OF THE BATTERY: MAKE: EXIDE/UNION/LUMINOUS AND EQUIVALENT
11. APPLICATION: MACNEIL TRANSLOADER MODEL-2520EN
12. CORRUGATED PLASTIC SEPERATORS SHOULD BE INSERTED BETWEEN CELLS AND BATTERY TRAY ON ALL SIDES TO A THICKNESS OF MINIMUM 10MM AND THE SEPERATOR HEIGHT SHOULD BE HIGHER THAN THE CELL TOP TO A HEIGHT OF 10MM.

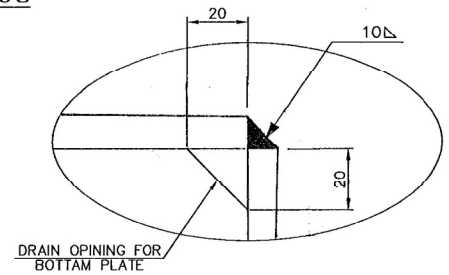
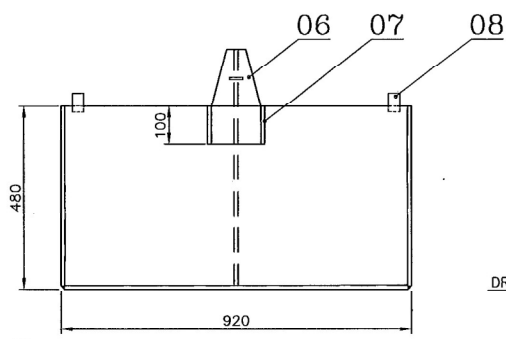
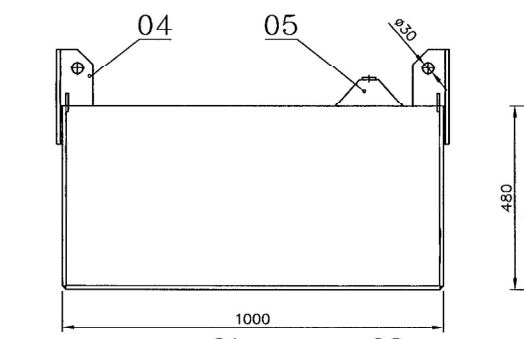
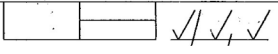
DRY TRACTION BATTERY- 72VOLT, 385AH

SPECIFICATIONS AND TECHNICAL REQUIREMENTS

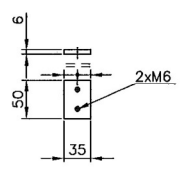
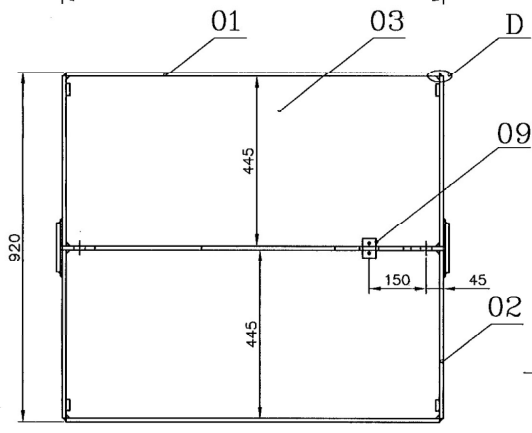
1. VOLTAGE: 72 VOLT
2. AMP.HR.AND RATE OF DISCHARGE: 385AMP.HR AT 5 HR RATE OF DISCHARGE
3. NO. OF CELLS: 36
4. CELL CONTAINER MATERIAL: HEAT SEALED POLYPROPYLENE.
5. LID: POLYPROPYLENE MATERIAL-TOP VENT PLUG WITH BASKET TYPE INDICATOR.
6. CELL SEPARATOR MATERIALS: POLYETHYLENE
7. BATTERY TRAY DIMENSION: AS PER ENCLOSED DRAWING NO. 3-M-02B-06-12332
8. TRAY MATERIAL: STEEL
9. TERMINAL TAKE OFF CABLES: 2 METRES LENGTH.
10. MAKE OF THE BATTERY: MAKE: EXIDE/UNION/LUMINOUS AND EQUIVALENT
11. APPLICATION: MACNEIL ELECTRIC FORKLIFT RANGER-1030
12. CORRUGATED PLASTIC SEPERATORS SHOULD BE INSERTED BETWEEN CELLS AND BATTERY TRAY ON ALL SIDES TO A THICKNESS OF MINIMUM 10MM AND THE SEPERATOR HEIGHT SHOULD BE HIGHER THAN THE CELL TOP TO A HEIGHT OF 10MM.

THIS DRAWING IS OUR SOLE PROPERTY AND NOT TO BE REPRODUCED OR COPIED FOR ANY PURPOSES WITHOUT THE WRITTEN PERMISSION OF BHARAT HEAVY ELECTRICALS LIMITED, CHENNAI - 600 044.

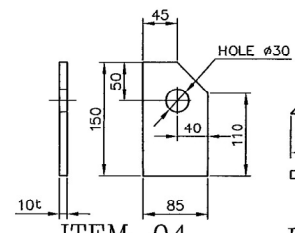
ALL DIMENSIONS ARE IN MM



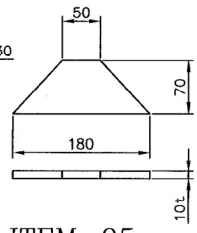
DETAIL-D



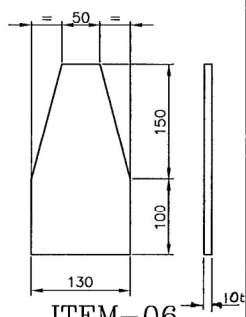
ITEM-09



ITEM-04



ITEM-05



ITEM-06

ITEM No.	DESCRIPTION	MATERIAL	STANDARD	NET.WT.IN KGS.	DRAWING No.	ITEM No.
01	PL.6tx50x30	Fe410WA	IS:2062	0.07		09
04	Pl. 5tx30x50	Fe410WA	IS:2062	0.23		08
02	PL.10tx150x100	Fe410WA	IS:2062	2.35		07
02	PL.10tx130x250	Fe410WA	IS:2062	5.10		06
01	PL.10tx70x180	Fe410WA	IS:2062	0.98		05
02	PL.10tx85x150	Fe410WA	IS:2062	2.02		04
01	PL.10tx900x980	Fe410WA	IS:2062	69.23		03
02	PL.10tx900x470	Fe410WA	IS:2062	66.41		02
03	PL.10tx470x980	Fe410WA	IS:2062	108.45		01
				254.84		

SCALE	DRAWN	CHECKED	APPROVED	DATE	DESCRIPTION	MATERIAL	STANDARD	NET.WT.IN KGS.	DRAWING No.	ITEM No.
1:1				03.09.03						

REFERENCE	DESCRIPTION	MATERIAL	STANDARD	NET.WT.IN KGS.	DRAWING No.	ITEM No.

MACHINE: AUTOMOBILES/FLOCAR TYPE: MACNEIL FLT-3TON

TITLE: BATTERY CONTAINER DRAWING No: 3-M-02B-12332 REV: 06

Sheet No: 06

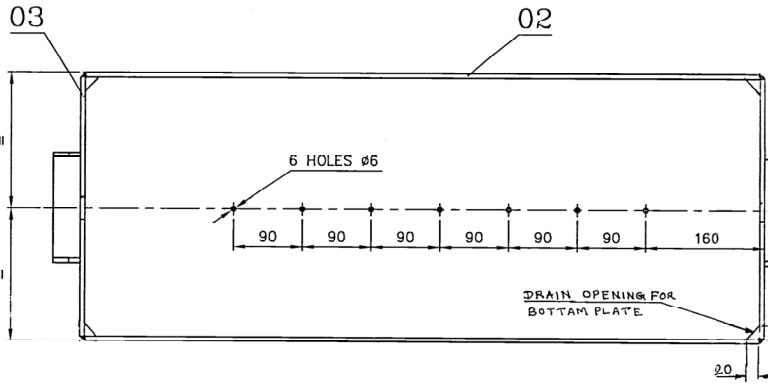
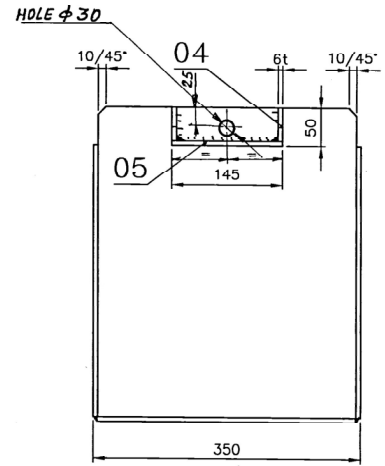
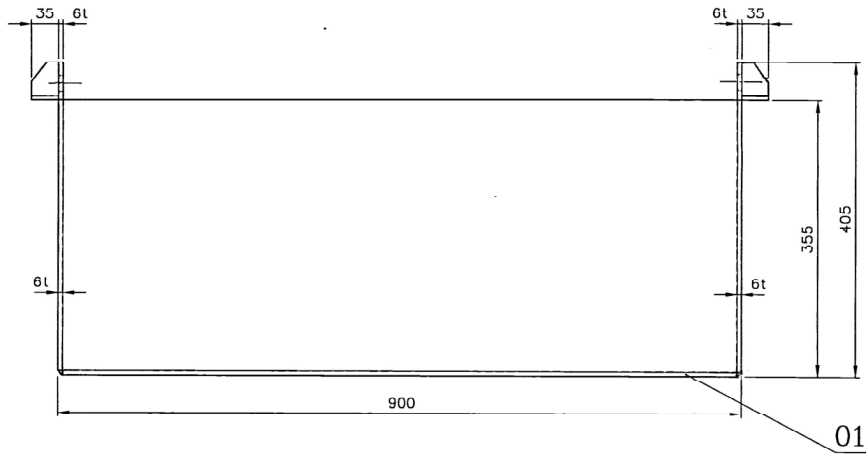
DRY TRACTION BATTERY- 24VOLT, 320AH

SPECIFICATIONS AND TECHNICAL REQUIREMENTS

1. VOLTAGE: 24 VOLT
2. AMP.HR.AND RATE OF DISCHARGE: 320AMP.HR AT 5 HR RATE OF DISCHARGE
3. NO. OF CELLS: 12
4. CELL CONTAINER MATERIAL: HEAT SEALED POLYPROPYLENE.
5. LID: POLYPROPYLENE MATERIAL-TOP VENT PLUG WITH BASKET TYPE INDICATOR.
6. CELL SEPARATOR MATERIALS: POLYETHYLENE
7. BATTERY TRAY DIMENSION: AS PER ENCLOSED DRAWING NO. 3-M-02B-07-08044
8. TRAY MATERIAL: STEEL
9. TERMINAL TAKE OFF CABLES: 2 METRES LENGTH.
10. MAKE OF THE BATTERY: MAKE: EXIDE/UNION/LUMINOUS AND EQUIVALENT
11. APPLICATION: MACNEIL TRANSLOADER 2140
12. CORRUGATED PLASTIC SEPERATORS SHOULD BE INSERTED BETWEEN CELLS AND BATTERY TRAY ON ALL SIDES TO A THICKNESS OF MINIMUM 10MM AND THE SEPERATOR HEIGHT SHOULD BE HIGHER THAN THE CELL TOP TO A HEIGHT OF 10MM.

CAUTION: THIS DRAWING IS FOR THE USE OF THE CUSTOMER AND SHOULD NOT BE USED IN ANY FORM FOR ANY PURPOSE WITHOUT THE WRITTEN PERMISSION OF THE ENGINEER. ALL RIGHTS RESERVED. ELECTRICALS LIMITED. HYDRABAD - 500014.

ALL DIMENSIONS ARE IN MM



ALL WELDED CONSTRUCTIONS

SCANNED

No of Pieces	DESCRIPTION	MATERIAL	STANDARD	NET.WT.IN KGS.	DRAWING No.	ITEM No.
2	Pl. 6tX35X145L	Fe410WA	IS: 2062	0.50		05
4	Pl. 6tX35X44	Fe410WA	IS: 2062	0.30		04
2	Pl. 6tX338X399L	Fe410WA	IS: 2062	12.70		03
2	Pl. 6TX349X888	Fe410WA	IS: 2062	28.96		02
1	Pl. 6TX338X888L	Fe410WA	IS: 2062	14.48		01
				56.94		

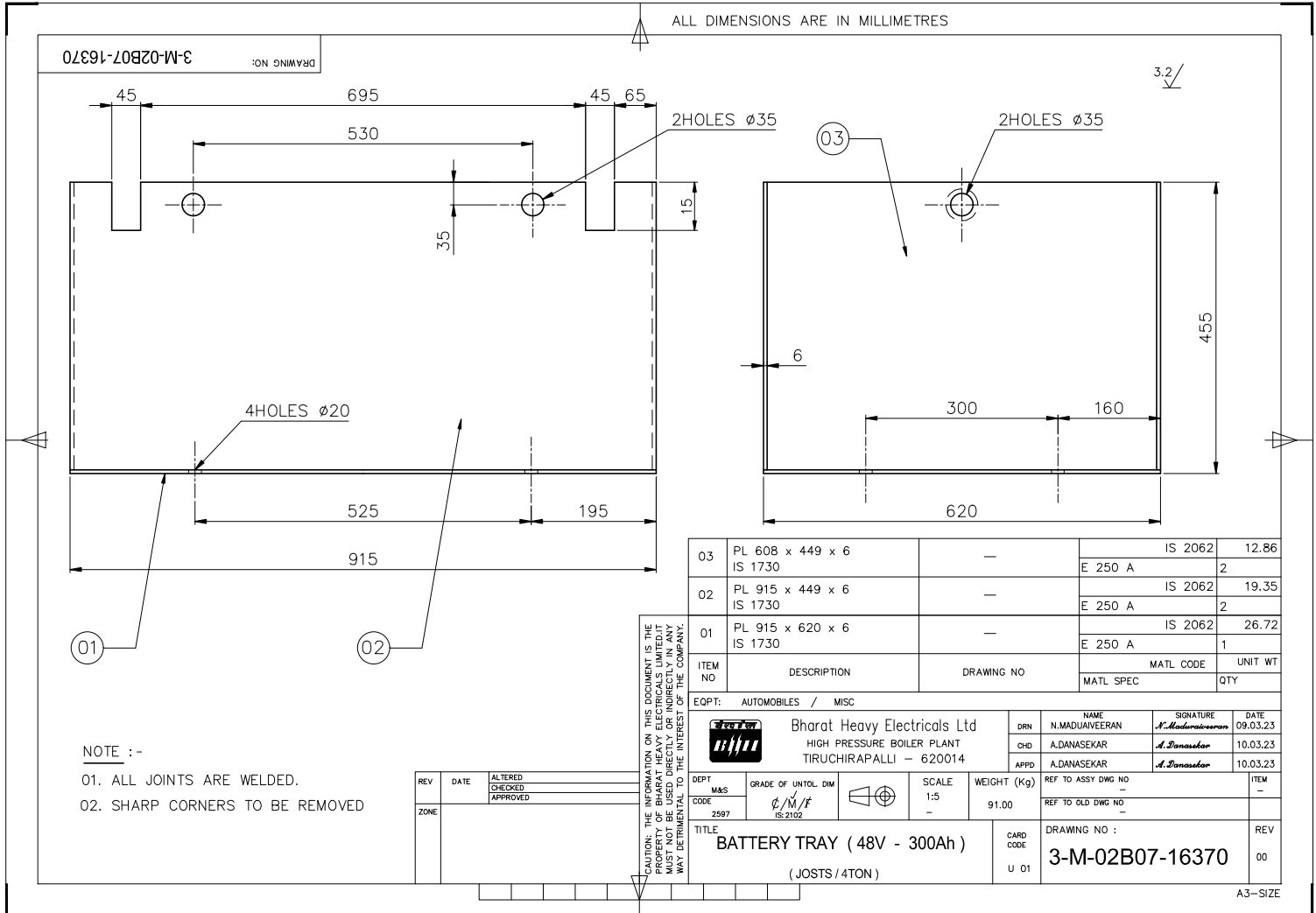
SCALE	DRAWN/TCO	CHECKED	APPROVED	DATE	COMPLIMENT	CLUDE: 00	EQUIPMENT CODE: - 07	DCN REF	DATE	SIGN.	INDEX
1:5				11.10.80/19.08.03					28/18/83		(Z)

MACHINE	TITLE	TYPE	DRAWING No	REV.
NEW	BATTERY CONTAINER	MISC C TRANSLOADER 2040-41	07	

DRY TRACTION BATTERY- 48VOLT, 300AH

SPECIFICATIONS AND TECHNICAL REQUIREMENTS

1. VOLTAGE: 48 VOLT
2. AMP.HR.AND RATE OF DISCHARGE: 300AMP.HR AT 5 HR RATE OF DISCHARGE
3. NO. OF CELLS: 24
4. CELL CONTAINER MATERIAL: HEAT SEALED POLYPROPYLENE.
5. LID: POLYPROPYLENE MATERIAL-TOP VENT PLUG WITH BASKET TYPE INDICATOR.
6. CELL SEPARATOR MATERIALS: POLYETHYLENE
7. BATTERY TRAY DIMENSION: AS PER ENCLOSED DRAWING NO. 3-M-02B-07-16370
8. TRAY MATERIAL: STEEL
9. TERMINAL TAKE OFF CABLES: 2 METRES LENGTH.
10. MAKE OF THE BATTERY: MAKE: EXIDE/UNION/LUMINOUS AND EQUIVALENT
11. APPLICATION: JOST TRANSLOADER 4 TON 4 WHEELER
12. CORRUGATED PLASTIC SEPERATORS SHOULD BE INSERTED BETWEEN CELLS AND BATTERY TRAY ON ALL SIDES TO A THICKNESS OF MINIMUM 10MM AND THE SEPERATOR HEIGHT SHOULD BE HIGHER THAN THE CELL TOP TO A HEIGHT OF 10MM.



NOTE :-

- 01. ALL JOINTS ARE WELDED.
- 02. SHARP CORNERS TO BE REMOVED

REV	DATE	ALTERED
		CHECKED
		APPROVED
ZONE		

CAUTION: THE INFORMATION ON THIS DOCUMENT IS THE PROPERTY OF BHARAT HEAVY ELECTRICALS LTD. IT MUST NOT BE USED DIRECTLY OR INDIRECTLY IN ANY WAY DETRIMENTAL TO THE INTEREST OF THE COMPANY.

ITEM NO	DESCRIPTION	DRAWING NO	MATL CODE	UNIT WT
03	PL 608 x 449 x 6 IS 1730	-	IS 2062	12.86
			E 250 A	2
02	PL 915 x 449 x 6 IS 1730	-	IS 2062	19.35
			E 250 A	2
01	PL 915 x 620 x 6 IS 1730	-	IS 2062	26.72
			E 250 A	1
		MATL SPEC	QTY	

EQPT: AUTOMOBILES / MISC

	Bharat Heavy Electricals Ltd HIGH PRESSURE BOILER PLANT TIRUCHIRAPALLI - 620014		DRN	N.MADHUVIYERAN	SIGNATURE	N.Madhuviyeran	DATE	09.03.23
			CHD	A.DANASEKAR	SIGNATURE	A.Danasekar	DATE	10.03.23
			APPD	A.DANASEKAR	SIGNATURE	A.Danasekar	DATE	10.03.23
DEPT	M&S	GRADE OF UNTOL DIM	SCALE	WEIGHT (Kg)	REF TO ASSY DWG NO			ITEM
2597		C/M/F IS:2102	1:5	91.00	REF TO OLD DWG NO			-
TITLE BATTERY TRAY (48V - 300Ah) (JOSTS / 4TON)					CARD CODE	DRAWING NO :	REV	
					U 01	3-M-02B07-16370	00	

Technical Specifications of Lead Acid Traction Batteries

Lead Acid Traction Battery, 36 V, 300 Ah

Item: Lead Acid Traction Battery

Battery rated voltage: 36 V

Battery capacity: 300 Ah

Dimension of battery (L x B x H): Approx. 1263 mm x 340 mm x 340 mm.

Vendor to specify.

Dimensional tolerance: ± 5 mm

Application: Battery operated platform trolley

Make and model no of offered battery: Vendor to specify their offered make and model clearly.

Despatch Condition: The batteries should be sent in fully charged condition.

Warrantee: Minimum two years from the date of acceptance of material at BHEL, PPPU – Thirumayam

Lead acid traction battery, 24 V, 320 Ah

Item: Lead Acid Traction Battery

Battery rated voltage: 24 V

Battery capacity: 320 Ah

Dimension of battery (L x B x H): Approx. 885 mm x 355 mm x 405 mm.

Vendor to specify.

Dimensional tolerance: ± 5 mm

Application: Battery operated trucks

Make and model no of offered battery: Vendor to specify their offered make and model clearly.

Despatch Condition: The batteries should be sent in fully charged condition.

Warrantee: Minimum two years from the date of acceptance of material at BHEL, PPPU - Thirumayam

Annexure B

Pre-Qualification Criteria

A. Pre-Qualification Criteria - for the item schedules <u>1 to 8</u>		
Items	CHARGED AUTOMOTIVE BATTERY-12Volt,100Ah	
	DRY TRACTION BATTERY- 30VOLT, 290AH	
	DRY TRACTION BATTERY- 36VOLT, 300AH	
	DRY TRACTION BATTERY- 36VOLT, 290AH	
	DRY TRACTION BATTERY- 48VOLT, 240AH	
	DRY TRACTION BATTERY- 72VOLT, 385AH	
	DRY TRACTION BATTERY- 24VOLT, 320AH	
	DRY TRACTION BATTERY- 48VOLT, 300AH	
SL. No	Pre-Qualification Criteria	Vendor's Confirmation /Acceptance
	If the vendor does not qualify as per pre-qualification criteria, the technical offer of such bidder(s) / vendor(s) offer will not be evaluated. The Vendor / Bidder should submit following details which are necessary for qualifying their offer.	
1.	The Vendor / Bidder should submit at least one Purchase Order reference towards the supply of Dry traction batteries and Automotive batteries for (Industrial purpose) in the last 5 years to BHEL (or) any-other Organisation. The Purchase order should be in the name of the Bidder.	
2.	BHEL reserves the right to visit the vendor's works for verifying the manufacturing facilities and any other credential furnished by the vendor. In case the information furnished with the offers found to be false / incorrect, the offer shall be rejected.	

Vendor Signature & Seal

B. Pre-Qualification Criteria - for the item schedules 9 & 10		
	Items	Lead Acid Traction Battery, 36 V, 300 Ah Lead acid traction battery, 24 V, 320 Ah
SL. No	Pre-Qualification Criteria	Vendor's Confirmation /Acceptance
	The bidder / vendor has to compulsorily meet all the following Requirements to get qualified for consideration of the technical offer. If the vendor does not qualify as per pre-qualification criteria, the technical offer of such bidder(s) / vendor(s) offer will not be evaluated.	
1.	The bidder must submit at least one previous PO copy to their reputed customer(s) for supply of Lead Acid Traction Batteries in the last seven years from the date of this tender.	
2.	Reputed brands of lead acid traction batteries like Exide, Union, Amara Raja, Luminous, HBL, Southern etc. are acceptable. The bidder must be either OEM or authorised dealer of the offered make. In case of authorised dealers, valid dealership certificate should be submitted along with the offer. Note: Apart from the specified brands, equivalent brands as acceptable to BHEL will also be considered.	
Note: The bidder should submit the technical data sheet of the offered batteries along with their offer.		

Vendor Signature & Seal

Annexure – A- Additional Terms and Conditions for GeM Enquiry

The terms and condition mentioned in this document are applicable in addition to the GeM General Terms and Conditions. Bidders shall furnish pointwise confirmation/details.

<u>To be filled by bidder</u>		
Description of the Equipment:		
GeM Tender No. & Date		
Name of the firm (Bidder)		:
Address		:
Contact details	<u>Contact person 1</u> Name: Designation: Office Phone: Mobile: e-mail: <u>Contact person 2</u> Name: Designation: Office Phone: Mobile: e-mail:	
Offer/Quotation reference with date		:
SI	Terms and conditions	Vendor's confirmation
1.	Technical: Automotive and Traction batteries shall be as per technical Specifications attached with the enquiry. Bidder shall comply the technical specification as per the enquiry. Any clarifications/deviations to the specification requirements are to be clearly indicated in the above format. Hidden deviations indicated elsewhere in the offer will not be evaluated.	
2.	Pre-qualification requirement: Offer shall be considered only if bidder is meeting Tender Prequalification requirement (Annexure-B). Vendor to comply with Pre-Qualification requirement of the tender and submit along with their technical bid - the credentials and other documents as indicated in the PQR in the format prescribed. Otherwise their offer will get rejected.	
3.	Inspection by BHEL/as per Technical specification(if any).	
4.	Vendor offers will be considered for price bid opening subject to fulfilment of techno commercial suitability.	
5.	Evaluation of tender will be item wise.	
6.	Payment terms: <ol style="list-style-type: none"> 1. Payment terms for Non MSME Suppliers: Within 90 days after CRAC 2. Dealers/Traders (if the quoted items are not manufactured by the supplier) shall be considered as Non-MSME supplier for this tender. 3. Payment terms for Micro & Small Enterprises (MSEs): Within 45 days after CRAC. To entitle the above payment terms, the supplier should be manufacturer of the offered item and should upload UDYAM Registration Certificate in proof of MSE. 4. Payment terms for Medium Enterprises: Within 60 days after CRAC. To entitle the above payment terms, the supplier should be manufacturer of the offered item and should upload UDYAM Registration Certificate in proof of Medium Enterprises. 	

	<p>Payment shall be as per above terms.</p> <p>This a mandatory deemed accepted clause if you are submitted your offer through GeM. Any deviation in this clause anywhere in the offer will be ignored. If a supplier has submitted their offer against this enquiry, it shall be construed that they have accepted the above payment terms relevant to their MSME category without any deviation (Dealers/Traders (if the quoted items are not manufactured by the supplier) shall be considered as Non-MSME supplier for this tender).</p> <p>In case of Auto PRC/CRAC, Payment due date shall be calculated from CRAC date or material acceptance date by BHEL whichever is later.</p>	
7.	<p>Firm Price:</p> <p>The quoted / finalised rates shall be Firm till execution of the supplies. Offer with PVC clause will not be considered.</p>	
8.	<p>Liquidated Damages:</p> <p>LD terms shall be as per GeM General Terms and Conditions. Invoice date/Bill of Lading date/Airway Bill date/Lorry way bill date/e-waybill/Railway Receipt date, whichever is later will be considered for LD calculation.</p>	
9.	<p>Delivery term:</p> <p>The quote shall be on FOR BHEL STORES - Trichy / BHEL STORES - Thirumayam destination basis as applicable inclusive of Packing, forwarding, Freight also to yours account. Transit Insurance is under Supplier scope.</p>	
10.	<p>Performance Bank Guarantee:</p> <p>Not Applicable</p>	
11.	<p>Repair & replacements: Within the guarantee period vendor has to replace / rectify the defective/ damaged items on free of cost within a reasonable time of reporting from our end.</p>	
12.	<p>Kindly Indicate the HSN Code for all items</p>	
13.	<p>Rate quoted in GeM portal should be on FOR destination basis inclusive of all taxes, freight etc. Transit Insurance is under Supplier scope.</p> <p>Please indicate the applicable GST %, P & F and freight cost (in % of material cost), which is included in your quoted rate in GeM portal.</p>	
14.	<p>Documents are to be submitted along with technical bid (Part-1)</p> <ol style="list-style-type: none"> 01. Covering letter 02. Unpriced offer. 03. Filled up and signed technical specification (GeM Tender catalogue). 04. Filled BHEL Terms and condition sheet (Annexure-A). 05. Filled Annexure-B - PQR along with supporting documents. 06. Documents required along with offer as per technical specification 07. Product Catalogues (if any). 08. MSE UDYAM Certificate (if applicable). 09. Self-certification for local content declaration as per Make In India Policy <p>Note: All the pages of documents are to be signed and sealed by authorized signatory of the company. Any query during enquiry stage shall be replied within two days failing which offer may be rejected as non-responsive.</p>	
15.	<p>Inspection and testing requirements:</p> <p>Inspection and testing requirements are to be carried out as per the specification and BHEL Technical specifications in the enquiry. All test certificates are to be submitted while supply. If required by BHEL, test certificates to be produced before supply.</p>	

16.	Response to Tenders for Indigenous supplier will be entertained only if the vendor has a valid GST registration Number (GSTIN) which should be clearly mentioned in the offer. If the dealer is exempted from GST registration, a declaration with due supporting documents need to be furnished for considering the offer. Dealers under composition scheme should declare that he is a composition dealer supported by the screen shot taken from GSTN portal. The dealer has to submit necessary documents if there is any change in status under GST.	
17.	Supplier shall mention their GSTIN in all their invoices (incl. credit Notes, Debit Notes) and invoices shall be in the format as specified/prescribed under GST laws. Invoices shall necessarily contain Invoice number (in case of multiple numbering system is being followed for billing like SAP invoice no, commercial invoice no etc., then the Invoice No. which is linked/uploaded in GSTN network shall be clearly indicated), Billed to party (with GSTIN) & Shipped to party details, item description as per PO, Quantity, Rate, Value, applicable taxes with nomenclature (like IGST, SGST, CGST & UTGST) separately, HSN/ SAC Code, Place of Supply etc. Wherever E-Invoice is applicable, the tax invoice/ CN / DN submitted by the vendor must contain the QR code generated in E-Invoice Portal & IRN.	
18.	All invoices shall bear the HSN Code for each item separately (Harmonized System of Nomenclature)/ SAC code (Services Accounting Code).	
19.	Invoices will be processed only upon completion of statutory requirement and further subject to following: <ul style="list-style-type: none"> • Vendor declaring such invoice in their GSTR-1 Return/ IFF • Receipt of Goods or Services and Tax invoice by BHEL. 	
20.	As the continuous uploading of tax invoices in GSTN portal (in GSTR-1/ IFF) is available for all (i.e. both Small & Large) tax payers, all invoices raised on BHEL may be uploaded immediately in GST portal on dispatch of material /rendering of services. The supplier shall ensure availability of Invoice in GSTN portal before submission of invoice to BHEL. Invoices will be admitted by BHEL only if the invoices are available in GSTN portal (in BHEL's GSTR-2A/ GSTR-2B).	
21.	In case of discrepancy in the data uploaded by the supplier in the GSTN portal or in case of any shortages or rejection in the supply, then BHEL will not be able to avail the tax credit and will notify the supplier of the same. Supplier has to rectify the data discrepancy in the GSTN portal or issue credit note or debit note (details also to be uploaded in GSTN portal) for the shortages or rejections in the supplies or additional claims, within the calendar month informed by BHEL.	
22.	In cases where invoice details have been uploaded by the vendor but failed to remit the GST amount to GST Department (Form PMT-08 or Form GST RET-01 to be submitted) within stipulated time, then GST paid on the invoices pertaining to the month for which GST return not filed by the vendor will be recovered from the vendor along with the applicable interest (currently 24% p.a) and all subsequent bills of the vendor will not be processed till filing of the GST return by the vendor	
23.	In case GST credit is denied to BHEL due to non-receipt or delayed receipt of goods and/ or tax invoice or expiry of timeline prescribed in GST law for availing such ITC, or any other reasons not attributable to BHEL, GST amount claimed in the invoice shall be disallowed to the vendor.	
24.	Where any GST liability arising on BHEL under Reverse Charge (RCM), the vendor has to submit the invoices to BHEL well within the timeline prescribed in GST Law, to enable BHEL to discharge the GST liability. If there is a delay in submission of invoice by the vendor resulting in delayed payment of GST by BHEL along with Interest, then such Interest payable or paid shall be recovered from the vendor.	
25.	GST TDS will be deducted as per Section 51 of CGST Act 2017 and in line with	

	Notification 50/2018 –Central Tax dated 13.09.2018. GST TDS certificate will be generated in GSTN portal subsequent to vendor accepting the TDS deduction in the GSTN portal & the vendor can directly download the Certificate from the GSTN Portal.	
26.	<p>As per the provisions of Section 194Q of the Income Tax Act, we BHARAT HEAVY ELECTRICALS LIMITED, HPBP, TRICHY having PAN AAACB4146P, had turnover in the preceding financial year for more than Rs 10 Crores.</p> <p>Hence, we are liable as buyer to deduct tax at source on the payment for invoices issued by Supplier on or after 1st July 2021. Accordingly, discontinue charging TCS u/s 206C(1H) on invoices issued from 1st Jul 2021 onward.</p> <p>We shall deduct the eligible TDS u/s 194Q on the payments for invoices issued on or after 1st Jul 2021. TDS deducted so, shall be deposited to the Income Tax Department, and TDS certificate to this effect. Tax credit of such TDS shall reflect in FORM26AS of the supplier at the end of same quarter in which TDS is deducted.</p> <p>For Suppliers who have not filed Income Tax returns for the last 2 preceding assessment years, TDS deduction at higher rates will be applicable as per Section 206AB and Section 206CCA of Income-tax act.</p>	
27.	GST CREDIT: Suppliers are advised to get registered to GSTN portal. Tenderer under "GST credit" shall be preferred.	
28.	Any change in applicable rates of Tax or any other statutory levies (Direct / Indirect) or any new introduction of any levy by means of statute and its corresponding liability for the deliveries beyond the agreed delivery date for reasons not attributable to BHEL will be to vendors account. BHEL will not reimburse the same and any subsequent claim in this respect will be summarily rejected.	
29.	<p>BILL PROCESSING METHOD:</p> <p>Supplier has to ensure the full quantity of material delivery within given PO delivery date to process the bill for payment. In case supplier fails to deliver full quantity within delivery date, bills received after PO delivery date will be processed after final despatch of the total pending supply. Further, bills will be clubbed and forwarded for payment processing as a single bunch.</p>	
30.	<p>MSE /START-UP VENDOR:</p> <p><i>UDYAM Registration certificate shall be submitted by MSE vendors to avail MSE benefits. Start-up category certificate shall be submitted by start-up companies to avail exemption in Annual Turnover/Past experience if PQC stipulates requirement of Annual Turnover/Past experience.</i></p>	
31.	<p>Make in India Policy:</p> <p>Refer the Tender document regarding public procurement policy (Preference to Make in India), Order 2017.</p> <p>"Bidders shall ensure to apply for Make In India preference while quoting through GeM portal. Otherwise offer will not be considered.</p> <p>The local supplier at the time of tender, bidding or solicitation shall be required to provide self-certification that the item offered meets the minimum local content and shall give details of the Location(s) at which the local value addition is made."</p>	
32.	<p>Fraud Prevention Policy</p> <p>Bidder along with its associate /collaborators /sub-contractors /sub-vendors / consultants / service providers shall strictly adhere to BHEL Fraud Prevention Policy displayed on BHEL website http://www.bhel.com and shall immediately bring to the notice of BHEL Management about any fraud or suspected fraud as soon as it comes to their notice.</p>	

33.	<p><u>Risk purchase clause:</u></p> <p>a. In the event of any successful Tenderer's failure to fulfil any of the tender / Contract obligations including supply of whole or any part of the ordered items as per Contract / Agreement, BHEL has the right to terminate the contract and purchase from elsewhere, at the risk and cost of the defaulted supplier, either the whole of the goods or any part which the supplier has failed to deliver or dispatch within the time stipulated in the contract or if the same were not available, the best and nearest available substitute thereof. The supplier shall be liable for the additional expenditure/difference in Cost, if any, including consequential losses which BHEL may sustain by reason of risk purchase in addition to the applicable LD as per the Purchase order/contract.</p> <p>b) The decision of BHEL with regard to the additional expenditure / difference in cost and consequential losses incurred by BHEL shall be final and binding on the supplier.</p> <p>c) The amount recoverable under risk purchase shall be recovered from the defaulted supplier in all or any of the following manners:</p> <ol style="list-style-type: none"> i. from dues available in the form of Bills payable to defaulted supplier, SD, BGs against the same contract. ii. from the dues payable to defaulted supplier against other contracts in the same Region/Unit /any other region/unit iii. In-case recoveries are not possible with any of the above available options, Legal action shall be initiated for recovery against defaulted supplier. iv. GST will be applicable to the amount recoverable under risk purchase 	
34.	<p><u>CONFLICT OF INTEREST:</u></p> <p>A bidder shall not have conflict of interest with other bidders. Such conflict of interest can lead to anti-competitive practices to the detriment of Procuring Entity's interests. The bidder found to have a conflict of interest shall be disqualified. A bidder may be considered to have a conflict of interest with one or more parties in this bidding process, if:</p> <ol style="list-style-type: none"> a) they have controlling partner (s) in common; or b) they receive or have received any direct or indirect subsidy financial stake from any of them; or c) they have the same legal representative/agent for purposes of this bid; or d) they have relationship with each other, directly or through common third parties, <u>that puts them in a position to have access to information about or influence on the bid of another Bidder;</u> or e) Bidder participates in more than one bid in this bidding process, Participation by a Bidder in more than one Bid will result in the disqualification of all bids in which the parties are involved. <u>However, this does not limit the inclusion of the components/ sub-assembly/ Assemblies from one bidding manufacturer in more than one bid;</u> or f) In cases of agents quoting in offshore procurements, on behalf of their principal manufacturers, one agent cannot represent two manufacturers or quote on their behalf in a particular tender enquiry. One manufacturer can also authorise only one agent/dealer. There can be only one bid from the following: <ol style="list-style-type: none"> 1. The principal manufacturer directly or through one Indian agent on his behalf; and 2. Indian/foreign agent on behalf of only one principal; 	

	<p style="text-align: center;">or</p> <p>g) A Bidder or any of its affiliates participated as a consultant in the preparation of the design or technical specifications of the contract that is the subject of the Bid, or</p> <p>h) In case of a holding company having more than one independently manufacturing units, or more than one unit having common business ownership/Management, only one unit shall quote. Similar restrictions would apply to closely related sister companies. Bidder must proactively declare such sister/common business/ management units in same/similar line of business.</p>	
35.	Set off : BHEL shall have the right to recover any money which in the sole opinion of BHEL is due from the supplier from any money due to the supplier under this Contract or any other contract or from the Security Deposit/BG furnished by the supplier under this Contract or any other contract.	
36.	Cartel Formation: The Bidder declares that they will not enter into any illegal or undisclosed agreement or understanding, whether formal or informal with other Bidder(s). This applies in particular to prices, specifications, certifications, subsidiary contracts, submission or non-submission of bids or any other actions to restrict competitiveness or to introduce cartelization in the bidding process. In case, the Bidder is found having indulged in above activities, suitable action shall be taken by BHEL as per extant policies/ guidelines.	
37.	The offers of the bidders who are under suspension and also the offers of the bidders, who engage the services of the banned firms /principal/agents, shall be rejected. The list of banned firms is available on BHEL web site www.bhel.com	
38.	The following documents are to be sent along with consignment to store: One Duplicate for Transporter copy of tax invoice + one extra copy of tax invoice + Delivery challan + LR COPY+E-Way bill+ Test Certificates (if applicable).	
39.	Seller Tax invoice, LR copy, E-Way bill, Courier docket etc. are to be uploaded in GeM portal while updating dispatch details in GeM portal	
40.	Seller Tax invoices (Original for Recipient + Duplicate for Transporter) either in Original hard copies or Digitally Signed Soft copies along with copy of LR + E-Way bill are to be sent to the buyer	
	<p>Note:</p> <ol style="list-style-type: none"> 1. In the event of our customer order covering this tender being cancelled /placed on hold / otherwise modified, BHEL would be constrained to accordingly cancel / hold / modify the tender at any stage of execution. 2. BHEL may negotiate the L1 rate, if not meeting our budget / estimated cost. BHEL may re-float the tender opened, if L1 price is not acceptable to BHEL. 3. BHEL reserves its right to reject an offer due to unsatisfactory past performance by the respective Vendor in the execution of any contract to any BHEL project / Unit. 4. Any other commercial terms indicated by the vendor in their offer elsewhere will be ignored. BHEL will proceed with tender evaluation as per Annexure-A and GeM general terms and conditions only. 	

Vendor's Seal & Signature