

PPX-BOI DEPARTMENT BHARAT HEAVY ELECTRICALS LIMITED HEEP: HARDWAR-249 403 (Uttarakhand) Email: mzp@bhel.in, manojy@bhel.in Telephone: 01334281707	Item-Solid Support for condenser Project-2x660 Mw Talcher
---	--

Important Instruction to bidders

1. SCOPE OF ENQUIRY:

E-bids on GeM are invited from bidders for the supply of “Solid Support for condenser” for 2x660 Mw Talcher projects detailed as below-

Project	Item description	Unit/Lot	Qty req	Delivery period
2x660 Mw NTPC Talcher (Odisha)- India	Mat code- W97716071068 SOLID SUPPORT FOR CONDENSER FOR A BEARING LOAD CAPACITY OF 1000KN, TYPE PTFETLFG SLIDING PAD MOVABLE IN ALL DIRECTIONS. DRG: 3160717003700 REV:00	Uni1-1	48 Nos	31-03-2024
		Unit-2	48 Nos	30-06-2024

2. EARNEST MONEY DEPOSIT (EMD)

2.1 Interested vendors must submit their e-bid along with the proof of submission of following Earnest Money Deposit (EMD) details in BHEL’s e-procurement portal.

Details	Amount In INR	Type
EMD	INR 60,000/- (INR-Sixty Thousands only)	Refundable

2.2 The EMD should be submitted in the form of demand draft / Pay Order/ Cash (as permissible under Income Tax Act). The Drafts shall be drawn in favor of “BHEL Hardwar”. **E- payment is also acceptable. For E-Payment, the RTGS details are as mentioned below:**

Bank Details	SWIFT Details of bank	Contact Details of Banker
STATE BANK OF INDIA RANIPUR BRANCH, OPP: BHEL MAIN GATE, SECTOR-5, RANIPUR, HARIDWAR, UTTRAKHAND, INDIA PIN CODE : 249403	SWIFT NO : SBININBB225 CC ACCOUNT NO : 10667995458 IFSC CODE : SBIN0000586	Contact No. +91 1334 224201 +91 1334 226125 Fax:+91 1334 226512

Proof of EMD submission details must be uploaded on the e-procurement portal.

If EMD shall be submitted in the form of demand draft / Pay Order the same may be sent to following address

To,
THE HEAD OF MATERIAL MANAGEMENT,
Heavy Electrical Equipment Plant,
Bharat Heavy Electricals Limited,
Haridwar-249403 (Uttarakhand), India.

3 Bidders already registered at BHEL Hardwar (i.e. PMD Vendors) for this package are exempted from submission of EMD.

3.1 MSE suppliers /State Government PSU/Central Government PSU are exempted for submission of EMD. Micro and Small Enterprises (Registered under SSI, NSIC, Khadi Board, DIC etc.) are also exempted from submission of EMD.

“MSE Suppliers can avail the intended benefits only if they submit along with the offer, attested copies of either EM II certificate having deemed validity (five years from the date of issue of acknowledgement in EM II) or valid NSIC certificate or EM II certificate along with attested copy of a CA certificate (Format enclosed at annexure-1 where deemed validity of EM II certificate of five years has expired) applicable for the relevant financial year (latest audited). Date to be reckoned for determining the deemed validity will be the date of bid opening (Part-I bid). Non-submission of such documents will lead to consideration of their bid at par with other bidders. No benefit shall be applicable for this enquiry if any deficiency in the above required documents is found or the requisite documents are not submitted before price bid opening. The above require document are to be uploaded on the e-procurement portal. Documents should be notarized or attested by a Gazette officer.”

- 3.2 It is clarified that benefits of MSE (such as EMD Waiver, Tender fee exemption, Price preference, Payment preference etc.) will be given only to those MSE Vendors who are manufacturers of offered items against the NIT. No MSE benefits shall be provided to Agents/Stockiest/Dealers/Traders etc. for the items offered but not manufactured by themselves.
- 3.3 The bidder whose bid is technically not accepted will be informed & EMD wherever submitted shall be refunded after the finalization of the contract. EMD shall be forfeited in the event of bidder opting out after tender opening within validity of offer.

4. PRE-QUALIFICATION REQUIREMENT (PQR)

The Pre-Qualification Requirements have been compiled enclosed with the tender documents. All the bidders should ensure submission of complete details and documents as called for in these requirements. The Offers submitted by the bidders would be scrutinized with respect to Pre-Qualification Requirements first. Techno- Commercial offer of only those bidders shall be evaluated who meet the Pre-Qualification Requirements.

5. SUBMISSION OF OFFER

Please note that this two part tender enquiry has been published on GeM portal (Part-I i.e. Techno-Commercial Bid along with PQR will be opened first). Subsequently, Part-2 offer i.e price bids will be open for techno-commercial qualified bidder only through GeM portal. Price shall be quoted in totality including FOR cost with GST on GeM portal.

- 5.1 Only English version or bilingual with one language as English, of all documents would be valid & binding.
- 5.2 Bidders are advised to read all the tender documents carefully. Any submission of tender by the bidder shall be deemed to have been done after careful study and examination of the tender documents and with full understanding of the implications thereof. The specifications/ Technical Requirements and terms & conditions shall be deemed to have been accepted unless otherwise specifically commented upon in 'Deviation' sheets by the bidder in his offer. Non-compliance with any of the requirements and instructions in the Tender Enquiry may result in rejection of the offer.
- 5.3 Name of vendor's dealing person with Contact No(s), Email ID and Address of correspondence shall be provided in the bid.

[A] PART-I BID: PRE-QUALIFICATION REQUIREMENT (PQR) & TECHNO-COMMERCIAL BID

Following documents are an integral part of this tender enquiry and endorsed copies of these documents (duly signed and stamped on each page, as a token of acceptance) and reply for each clause of Annexure-A are to be necessarily submitted along with the 'Techno-Commercial Bid' (Part-I bid).

All these following documents shall be uploaded in the "Techno-commercial bid level" on GeM Portal

- Proof of EMD submission details must be uploaded on the e-procurement portal.
 - Please submit duly signed & stamped copy (each page) of the Pre- Qualification Requirements (PQR) with supportive PQR documents prescribed in PQR.
 - Bidders are required to furnish requisite details in the formats specified in bidding documents for meeting the stipulated Pre-Qualification Requirements (PQR) along with all supporting documents like copies of End User Certificates, Unpriced copy of Purchase Orders and Contract Agreements etc.
 - Complete Technical offer with relevant drawings/ documents etc.
 - Please submit duly signed & Stamped copy of replica of Price Bid (without prices) showing 'quoted" in place of price.
 - Please submit duly signed & Stamped copy (each page) of duly filled "Byers Specific ATC" and its clause wise supporting documents where required.
 - Compliance of GeM-GTC (latest version) is shall be applicale.
 - Please submit duly signed & stamped copy (each page) of BHEL purchase & technical specification documents enclosed.
 - Please submit Endorser copy of QAP.
 - Please submit duly signed & stamped copy (each page) of "Instructions to bidder" (Annexure-B).
 - Commercial Terms & Conditions.
- i. Deviations if any are to be listed out separately. Please note that in case no- deviation sheet is received along with offer, it will be presumed that all terms and conditions mentioned in "INSTRUCTION TO BIDDERS, additional Terms & conditions of Tender enquiry as (Annexure-A) and "GISTC (General Instructions and Standard Terms & Conditions against Tender Enquiry)" shall be acceptable to you and your offer will be processed accordingly.
- ii. Any Deviation with reference to technical requirements/specification to be laid down on separate sheet along with the cost of Withdrawal of such technical deviations (if any). Acceptance of such technical deviations would be at the discretion of BHEL.

[B] PART-II BID (PRICE-BID): Price bid

- 5.5 e-Price bid shall be quoted in totality including FOR cost with GST on GeM portal.
- 5.6 price bid shall be opened only of Techno-Commercial qualified bidders for further evaluation and further processing as per tender conditions.
- 5.7 All correspondence thereof, shall be addressed to the following persons:

<p>Mr. Mahavir Singh Panwar Designation: Engineer(PPX-BOI) 4th Floor, Main Administrative Building HEEP, BHEL ,Hardwar- 249403 Uttarakhand, India</p>	<p>Mr. Manoj Kumar Designation: Manager (PPX-BOI) 4th Floor, Main Administrative Building HEEP, BHEL ,Hardwar- 249403 Uttarakhand, India</p>
---	--

- 5.8 BHEL prefers to deal directly with the principal manufacturers/OEM. However, if the OEM/ Principal insists on engaging the services of an agent, the same can be allowed only thru a tender specific authorization letter issued by the principal/OEM. The acceptance of any such offer would be at the discretion of BHEL.
As per directives of CENTRAL VIGILANCE COMMISSION, GOVERNMENT OF INDIA, one agent can not represent two or more suppliers or quote on their behalf in a particular tender. If so found at any stage, BHEL Hardwar is likely to cancel Enquiries / POs to such suppliers. Further, such Indian Agent is likely to be de-listed (Black listed for business from BHEL). Moreover, either the agent could bid on behalf of the manufacturer/ supplier or the manufacturer/ supplier could bid directly but not both. In case bids are received from both the manufacturer/ supplier and the agent, bid received from the agent shall be ignored.
- 5.9 Vendors operating from BHEL quarters, unauthorized colonies on BHEL Land and Dharamshalas/ Hotels shall not be considered, hence such vendors need not apply.

6. RIGHT OF ACCEPTANCE

- 6.1 BHARAT HEAVY ELECTRICALS LIMITED HARIDWAR reserves the right to reject any or all the bids/quotations without assigning any reason thereof. BHEL also reserves the right to increase or decrease the tendered quantities. Bidders should be prepared to accept order for reduced quantity without any extra charges.
- 6.2 Any discount/ revised offer submitted by a bidder on its own shall be accepted provided it is received on or before the due date and time of offer/bid submission (Part-I) if system allow. The discount shall be applied on pro- rata basis to all items unless specified otherwise by the bidder. Conditional discounts shall not be considered for evaluation of tenders.
- 6.3 Unsolicited discounts/revised offers given after enquiry opening (i.e. Part-I bid opening) shall not be accepted.
- 6.4 In case there is no change in the technical scope and/or specifications and/or commercial terms & conditions, the bidder/s shall not be allowed to change his/their price bids after the due date (i.e. Part-I bid opening).
- 6.5 In case of changes in scope and/or technical specification and/or commercial terms & conditions, having price implications, techno-commercially acceptable bidders shall be asked by BHEL (after freezing the scope, technical specifications and commercial terms & conditions) to submit the impact of such changes on their price bid. A cut-off date and time shall be given to all the techno-commercially acceptable bidders to submit the impact on their price bids.
- 6.6 In the event of any bidder, after finalizing the technical specification & scope of supply, opting to revise and submit their latest price bid instead of submitting impact on their price bid asked by BHEL, then their latest price bid shall prevail. However in such condition their original price bid will necessarily be opened.
- 6.7 After technical & commercial examination of the offers received and clarifications obtained (if required), Part-II (Revised Price Bid/ Original Price Bid along with Price Impact and Discount, if any) shall be opened, for which the date and time shall be intimated to technically and commercially acceptable bidders in case of public opening. BHEL may opt to finalize the prices through Reverse Auction amongst technically and commercially acceptable bidders. BHEL reserves the right to open the earlier price bids, if any, submitted by the bidder(s), if required.
- 6.8 No correspondence shall be entertained from the tenderers after opening of Part-II (Price bid), except clarifications (if any) asked by BHEL in writing.

IMPORTANT NOTE

Kindly ensure the timely submission of your offer (by 1345 Hrs IST on the due date) and note that Late Offers shall not be entertained under any circumstances.

For and on behalf of BHEL, Hardwar

Buyers Specific Terms & Conditions

Item Name: Solid Support for Condenser”

Project: 2x660 Mw Talcher

Buyers Specific Terms & Conditions in addition to GeM-GTC are as below-

Sl. No.	Terms	Description	Your confirmation
1.	Confirmation to compliance of General terms and conditions on GeM 4.0 (Version 1.5)	In addition to the terms & conditions mentioned in below, General terms and conditions on GeM 4.0 (Version 1.5) or subsequent rules/policies issued by GeM shall be applicable against this enquiry. Kindly confirm the acceptance of conditions of GeM GTC (latest version) as available/applicable.	
2.	Documents Checklist:	Kindly confirm that the following documents have been submitted along with your offer: <ol style="list-style-type: none"> 1. Techno- commercial offer (part 1 bid) along with Pre-Qualification Requirements and supportive doc of PQR & product details /Catalogue matching BHEL requirement. 2. Signed & stamped “Buyers Specific Terms & Conditions” 3. Vendor Quality plan (endorsed) 4. Proof of EMD submission 5. Part-2 offer i.e price bid on GeM portal inclusive material cost, freight & Taxes etc) 6. MSE/UAM certificate (if any) 7. Self-certification of Local content under make India compliance as per Govt order (format enclosed) 	
3.	Pre-Qualification Requirements	The Pre-Qualification Requirements have been enclosed/uploaded with tender doc. Bidders shall be furnished the complete details and documents as per PQR requirements. The Offers submitted by the bidders would be scrutinized with respect to Pre-Qualification Requirements first. Techno-Commercial offer of only those bidders shall be evaluated who meet the Pre-Qualification Requirements.	
4.	Evaluation criteria	Evaluation shall be done on total landed cost basis (including material cost, freight, packing forwarding, taxes & duty etc.) up to BHEL Talcher project site.	
5.	Price basis	Prices through GeM portal/e-bid should be quoted in totality i.e on FOR destination basis including GST etc. Bidder to Confirm that the prices will remain firm during the entire validity and execution of the Project. Please note that transit insurance of material shall be in BHEL scope only. Please quote your offer accordingly.	
6.	Offer validity	Please confirm that the validity of the offer shall be valid for 180 days from opening of Techno-Commercial offers/tender due date.	
7.	BID TO RA	Opening of Price bid & RA shall be conducted for only those bidders who qualifies PQR and whose techno-commercial bid is acceptable to BHEL. During RA on GeM only H-1 bidder will be eliminated.	
8.	Delivery	Bidders are requested to offer your best possible delivery in number of weeks/ months from the date of Purchase Order or documents approval whichever is later. Please note that BHEL reserve right to reject the offer of any bidders not meeting our project delivery requirement.	
9.	Technical requirements	Please confirm to comply the following technical requirements- 1. Engg drawing- 3160717003700 Rev01 2. Engg PQR VENDOR TO SUBMIT FOLLOWING DOCUMENTS ALONG WITH OFFER. i) PTFE BEARING INSTALLATION INSTRUCTION. ii) PTFE BEARING MANUFACTURING DRAWING. ii) PTFE BEARING TECHNICAL DATA SHEET.	
10.	Engineering Document/ Document	Drawings/Data sheets/Documents/Type Test/ Quality Plan etc. as called for in the specifications shall be submitted for approval to BHEL for BHEL/customer approval within 07 days of purchase order. Any delay in delivery on account of late submission	

Sign & Stamp of bidder

	approval	of drawings shall be to vendors account. BHEL will arrange the approval of the drawings/data sheets/ documents within 07 days of their receipt provided those are complete in all respect. Delays in approval shall be dealt on merit basis.									
11.	MDCC clause	Material shall be dispatched only after issue of material dispatch clearance by BHEL. All test certificates and relevant documents are to be sent to BHEL before dispatch of material for issue of MDCC, which will be issued after review of test certificates etc. MDCC will be issued within 07 days of receipt of these documents once found complete in all respects. In case of any delay on account of BHEL in issuing MDCC, delivery shall be extended by no. of days in excess of 7 days taken by BHEL in issuing MDCC and delays shall be dealt on merit basis. Material is to dispatched within 07 days of receipt of MDCC from BHEL without waiting for PO amendment.									
12.	General instructions/Packing & dispatch	1.Each item must be tagged with same description & Qty. as in Vendor Packing List. 2.Proper and sturdy packing suitable for handling at site or during transportation up to site in healthy condition may be ensured. 3.Guarantee/warranty & test certificate required to submit along with dispatch doc. 4.Item to be supplied directly to 2x660 660 MW NTPC Talcher Project.									
13.	Quality Requirements	1.Vendor to submit their Quality Plan for BHEL review & approval. 2.Inspection shall be done by BHEL/BHEL nominated inspection agency (M/s INTERTEK) as per BHEL approved QP.									
14	Guarantee/Warranty clause	Guarantee/Warranty shall be 12 months from the date of commissioning and 18 months from the date of dispatch, whichever is earlier. Supplier shall be responsible for free repair/ replacement of defective equipment /material at our site free of cost during guarantee/warranty period.									
15	Make in India & MSE Purchase Preference guidelines:	Self-certification from vendor is required to submit for "Make in India" in term of local content. Purchase preference to class-1 local supplier over class2 & non local supplier shall be applicable as per PPP-MII Order No. P-45021/ 2/ 2017-PP (BE-II) dtd. 04/06/2020 of Govt of India. Purchase preference shall be given as per applicable Make in India guidelines and as per functionalities enabled on GeM portal.									
16	Penalty / LD Clause	In case of delay in supply of material beyond the agreed contractual delivery, Penalty for Late Delivery would be applicable @ 0.5 % of the undelivered portion per week of delay or part thereof subject to a maximum of 10% of the total order value. The date of LR (Lorry Receipt) would be treated as the date of delivery for penalty purposes.pl confirm. In case of any deviation to the above penalty clause, BHEL reserves the right to load the offers to the extent to which it is not agreed by vendors (at offered value).									
17	Payment Terms	The payment term shall be done after issue of consignee receipt-cum acceptance certificate (CRAC) as per the below details: <table border="1" data-bbox="483 1458 1339 1641"> <thead> <tr> <th>Type of Bidder</th> <th>Payment Terms (Number of Days)</th> </tr> </thead> <tbody> <tr> <td>Micro & Small Enterprises (MSEs)</td> <td>45 days</td> </tr> <tr> <td>Medium Enterprises</td> <td>60 days</td> </tr> <tr> <td>Non MSME</td> <td>90 days</td> </tr> </tbody> </table> Subject to submission of non-discrepant documents.	Type of Bidder	Payment Terms (Number of Days)	Micro & Small Enterprises (MSEs)	45 days	Medium Enterprises	60 days	Non MSME	90 days	
Type of Bidder	Payment Terms (Number of Days)										
Micro & Small Enterprises (MSEs)	45 days										
Medium Enterprises	60 days										
Non MSME	90 days										
18	Quantity Variation	BHEL also reserves the right to Increase or decrease the tendered quantities. Accordingly, vendor to accept order for reduced/increased quantity without any extra charges, if any.									

Sign & Stamp of bidder

19	Risk Purchase	<p>In case of abnormal delays (beyond the maximum late delivery period as per LD clause) in supplies / defective supplies or non-fulfilment of any other terms and conditions given in Purchase Order, BHEL may cancel the Purchase Order in full or part thereof, and may also make the purchase of such material from elsewhere / alternative source at the risk and cost of the supplier. BHEL will take all reasonable steps to get the material from alternate source at optimum cost. If bidder does not agree to the above Risk Purchase Clause, BHEL reserves the right to reject the offer. In case for compelling reasons BHEL accepts the offer without acceptance of this clause by the bidder and in the eventuality of Risk Purchase, appropriate action will be taken as per BHEL extant rules. This will be without prejudice to any other right of BHEL under the contract or under General Law. Kindly confirm.</p>	
20	Action against Bidders / vendor / supplier / contractor in case of default	<p>In order to protect the commercial interests of BHEL, BHEL shall take action against supplies / contractors by way of suspension of business dealings, who either fail to perform or are in default without any reasonable cause, cause loss of business/ money/ reputation, indulge in malpractices, cheating, bribery, fraud or any other misconduct or formation of cartels so as to influence the bidding process or influence the price etc.</p> <p>Suspension of Business Dealings could be in the form of “Hold” or “Banning” a supplier/ contractor or a bidder and shall be as per “Guidelines for Suspension of Business Dealings with Suppliers/ Contractors” available at BHEL’s website “https://www.bhel.com/guidelines-suspension-business-dealings-supplierscontractors”</p>	

Sign & Stamp of bidder

PRE-QUALIFICATION REQUIREMENT FOR PROCUREMENT OF SPHERICAL PTFE BEARINGS

1. (a) Bidder/Vendor should have successfully designed, manufactured, tested and supplied Spherical PTFE Bearing as per EN 1337 or equivalent for at least one no purchase order having minimum 500 KN Load carrying capacity.
Spherical PTFE Bearing should be in successful operation for a period not less than one (1) year as on date of enquiry.
Purchase Order should fulfil the following conditions:
- One Order of minimum 24 Nos. of Bearing.
 - Purchase Order (PO) date for each order should be within 7 years from the date of enquiry.

OR

- (b) Bidder/Vendor should have successfully designed, manufactured, tested and supplied Spherical PTFE Bearing as per EN 1337 or equivalent for at least one no purchase order having minimum 1000 KN Load carrying capacity. Purchase Order (PO) date should be within 7 years from the date of enquiry.
Above referred PTFE Bearings should be tested from any NABL approved lab as per EN1337-7/IRC-83-2014.
2. Bidder to submit following documents in support of Clause no 1 (a) above.
- Un-priced copy of Purchase Order.
 - Certificate from the Purchaser/ End User as per Annexure-1 for successful installation/ operation of Spherical PTFE Bearings.
3. Bidder to submit following documents in support of Clause no 1 (b) above.
- Un-priced copy of Purchase Order for supply of PTFE Bearings.
 - Purchaser/End user /Customer approved Test certificate of Spherical PTFE Bearing (Load test, Friction test, Rotation test etc.) conducted at any NABL approved lab. Test certificates should be witnessed by Purchaser/End user /Customer.
 - Dispatch documents for supply of bearings against 3(i) of above.
4. Bidder should have following minimum in-house manufacturing facility at works.
- Machining facility.
 - Joining facility.

In support of above, bidder/vendor to submit signed and stamped Annexure-2.

[Handwritten signature]
15/11/2022
(Ghanshyam)
ngs/hxe

[Handwritten signature]
10.11.2022
R. C. Bharti
Engineer / HXE

ANNEXURE-1

Date:

TO WHOM SOEVER IT MAY CONCERN

This is to certify that **M/s XXXXX** have Designed, Engineered, Manufactured, Tested and supplied Spherical PTFE Bearing, **model no xxxxx** having **Load Carrying Capacity xxxx** KN for **xxxxx**, under our Purchase Order No. **xxxxxx** dated **xxxx**.

The Spherical PTFE Bearing was commissioned on date **xxxxx** and is in successful operation without any major problem since commencement.

Name of the Organization :

Address :

Signature :

Name of the Signatory :

Designation :

Phone No :

Date of issue :

Seal & Stamp of the
Organisation :

Note: If Customer's letter head is in language other than English then translation in English shall be written below header.

(To be furnished by Bidder/ Vendor on its letter head)

ANNEXURE-2

Date:

Details of minimum in-house manufacturing & Testing facility for Spherical PTFE Bearing

This is to certify that M/s..... has following minimum in-house facilities for manufacturing and Testing of Spherical PTFE Bearing:

1. Details of Machining Facilities M/c.....

2. Details of joining Facilities M/c.....

Signature :
Name of the Signatory :
Designation :
Phone No :
Email :
Seal & Stamp of the
Organization :

(Note: If letter head is in language other than English then translation in English shall be written below header.)

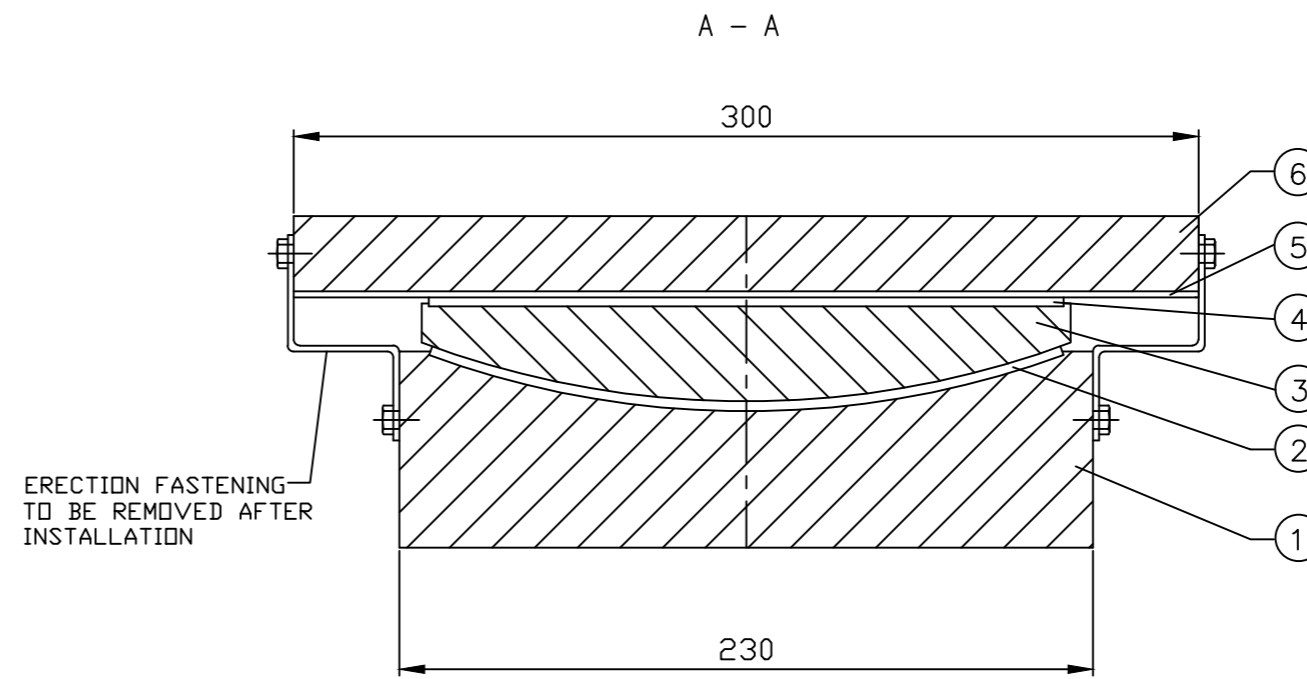
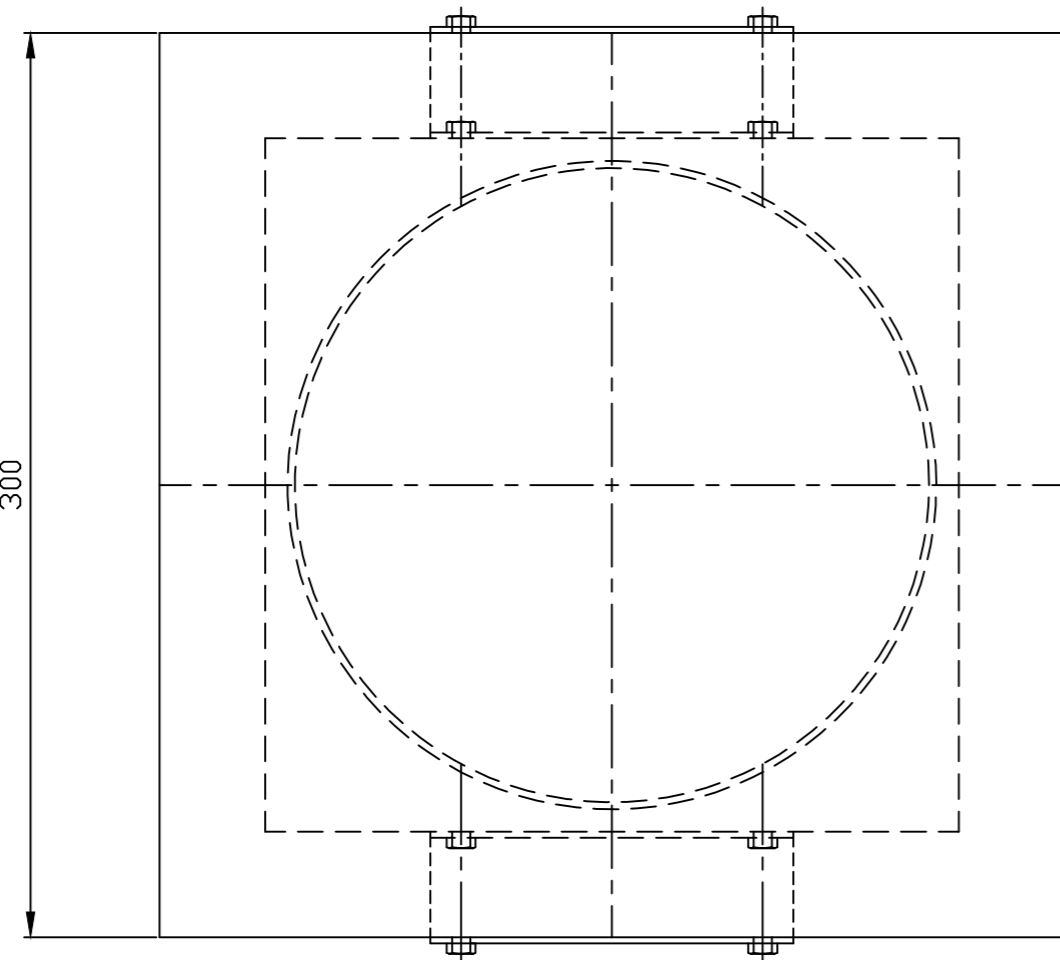
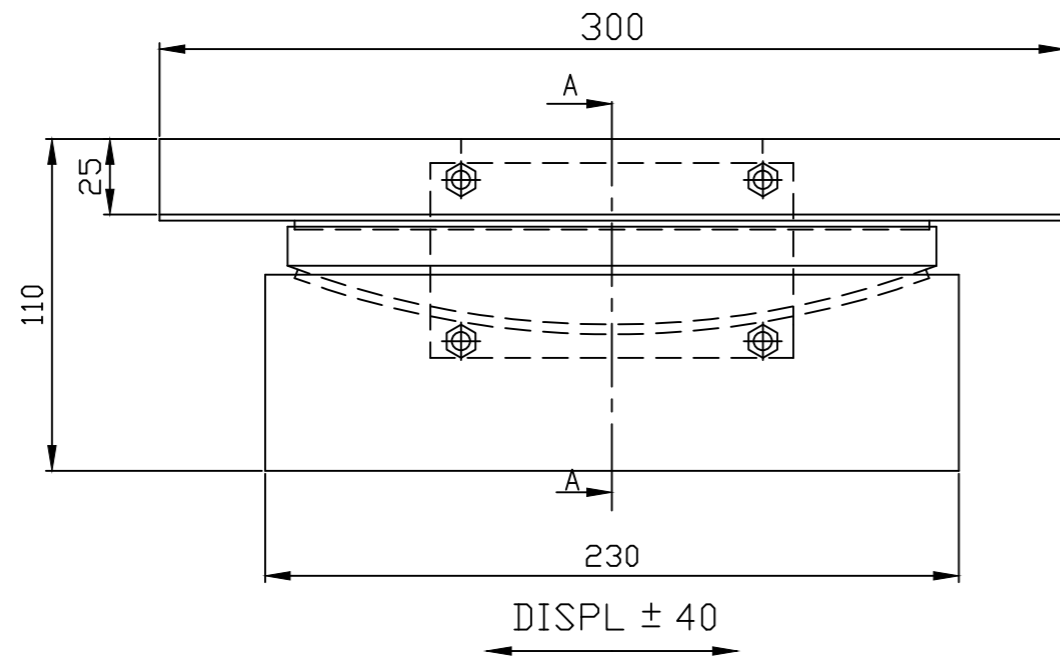
31607170037

अभिकल्प संख्या/DRAWING NO.

50 THE REST.

COPYRIGHT AND CONFIDENTIAL
THE INFORMATION ON THIS DOCUMENT IS THE PROPERTY OF
BHARAT HEAVY ELECTRICALS LIMITED. IT MUST NOT BE USED
DIRECTLY OR INDIRECTLY IN ANY WAY DETERMINENTAL TO THE
INTEREST OF THE COMPANY.

स्वाधिकार एवं गोपनीय
इस प्रोपर्टी में की गई सूचना भारत हेवी इलेक्ट्रिकल्स लिमिटेड की
सम्पत्ति है। इसका प्रत्यक्ष या अप्रत्यक्ष रूप में किसी भी तरह
प्रयोग नहीं किया जाए जो कंपनी के हित में हानिकार हो।



TECHNICAL REQUIREMENT:

- BEARING LOAD CAPACITY = 1000 KN.
- MAXIMUM DISPLACEMENT +/- 40 mm.
- COEFFICIENT OF FRICTION = 0.03 MAX.
- MANUFACTURING AND TESTING OF BEARING SHALL BE AS PER IRC:83 PART IV-2014.
- BEARING MARKING SHALL BE AS PER CL.7.8 OF IRC-83, PART-IV- 2014.
- TOLERANCES :
PLAIN DIMENSIONS: 0 TO +5 MM
THICKNESS OF STEEL COMPONENTS : ±1 MM (MACHINED)
OVERALL LENGTH : 0 TO +5 MM
- PAINTING DETAILS: 2 COATS OF EPOXY BASE ZINC RICH PRIMER PAINT -60 MICRONS DFT.
INTERMEDIATE PAINT : 1 COAT EPOXY TiO2 PIGMENTED POLYAMID CURED PAINT-60 DFT.
FINISH (FINAL) PAINT : 2 COATS ALIPHATIC ACRYLIC 2 PACK POLYURETHANE FINISHED PAINT -60 DFT.
TOTAL DFT - 180 MICRONS MIN.
- BHEL APPROVED BEARING TEST PROCEDURE SHALL BE APPLICABLE FOR LOAD TEST , FRICTION TEST & ROTATION TEST OF BEARING.

TABLE:-

SL.NO.	DESCRIPTION	MATERIAL
1	BEARING BASE	DIN EN 10025-2,S355J2G3/ IS:2062 Gr:E350 OR Eq.
2	PTFE SHEET (LOWER)	PTFE
3	SPHERICAL BLOCK	DIN EN 10025-2,S355J2G3/ IS:2062 Gr:E350 OR Eq.
4	PTFE SHEET (UPPER)	PTFE
5	SS COVER PLATE	STAINLESS STEEL (TP304)
6	TOP PLATE	DIN EN 10025-2,S355J2G3/ IS:2062 Gr:E350 OR Eq.

संशोधन REV.	दिनांक DATE	संशोधनकर्ता ALTERED BY जांचकर्ता CHD	संशोधन REV.	दिनांक DATE	संशोधनकर्ता ALTERED BY जांचकर्ता CHD	विभाग DEPTT. HXE	कोड /CODE 4222	अनुपात/SCALE N.T.S.	भार कि.ग्रा. WEIGHT (KG) 52.0	असेम्बली अभिकल्प का संदर्भ REFER TO ASSLY. DRG.	नग क्रमांक ITEM NO.	नगों की संख्या NO. OF ITEMS	कार्ड कोड CARD CODE 7	अभिकल्प संख्या/DRAWING NO. 31607170037	REV 01		
																पृष्ठ संख्या/Sheets No. 01	पृष्ठों की संख्या/No. of Sheets 01
असत्य विमाओं का वर्ग GRADE OF UNTOLERANCED DIMENSION			सी.बी.ओ.एम./C.B.O.M. 31607170037			अभिकल्प का स्तर STATUS OF DRG.			उत्पाद का प्रकार या ग्राहक/परियोजना का नाम TYPE OF PRODUCT OR NAME OF CUSTOMER/PROJECT								
मशीनिंग - एए0230208 एम MACHINING - AA0230208 m			सहमत विभाग AGREED DEPTT. WT.			नाम/NAME हस्ताक्षर/ SIGN. Sd/			दिनांक/DATE -			भारत हेवी इलेक्ट्रिकल्स लिमिटेड, रानीपुर, हरिद्वार BHARAT HEAVY ELECTRICALS LIMITED, RANIPUR, HARDWAR			नाम/NAME हस्ताक्षर/SIGN दिनांक/DATE वेरिफिकेशन संख्या No. of Ver.		
वेल्डिंग - एए0621104 की श्रेणी बी WELDING-CLASS 'B' OF AA0621104												DRM RAM Sd/ 01.11.22					
गैस कटिंग - एए0621101 की श्रेणी 3 GAS CUTTING-TABLE 3 OF AA0621101												CHD R.C.B Sd/ 01.11.22					
												APPD NAVEEN Sd/ 01.11.22					

MANUFACTURER'S NAME AND ADDRESS			QUALITY PLAN				TO BE FILLED BY BHEL		TO BE FILLED BY BHEL			
BHEL	VENDOR'S NAME	ITEM			QP NO.							
					REV							
		DRG. NO.	AS PER PO									
		SPEC.	AS PER PO									
	REV			Page 1 of 1								
SL. NO.	COMPONENT & OPERATIONS	CHARACTERISTICS	CLASS	TYPE OF CHECK	QUANTUM OF CHECK	REFERENCE DOCUMENT	ACCEPTANCE NORMS	FORMAT OF RECORDS	AGENCY			REMARKS
1	2	3	4	5	6	7	8	9	D	10		11

Note: All page of inspection documents shall be numbered in chronology with the QAP clause , dully mentioning the corresponding QAP clause nos. at the top of each page. One index page containing the documents descriptions, their page no & QAP clause shall be attached upfront the inspection documents.

MANUFACTURER/SUBCONTRACTOR	LEGEND: ! RECORDS IDENTIFIED WITH 'TICK' SHALL BE ESSENTIALLY INCLUDED BY CONTRACTOR IN QA DOCUMENTATION. M: MANUFACTURER / SUBCONTRACTOR B: BHEL / NOM. INSPECTION AGENCY N: CUSTOMER INDICATE 'P' PERFORM 'W' WITNESS AND 'V' VERIFICATION ALL 'W' INDICATED IN COLUMN 'N' SHALL BE 'CHP' OF CUSTOMER	FOR CUSTOMER USE	
			APPROVED BY

Certificate

In line with Government Public Procurement Order No. P-45021/2/2017-BE-II dt. 15.06.2017 & P-45021/2/2017-PP (BE-II) dated 28.05.2018, we hereby certify that we M/s _____(supplier name) are local supplier meeting the requirement of minimum local content (50%) as defined in above orders for the material against Enquiry No. _____

Details of location at which local value addition will be made is as follows:

We also understand, false declarations will be in breach of the Code of Integrity under Rule 175(1)(i)(h) of the General Financial Rules for which a bidder or its successors can be debarred for up to two years as per Rule 151 (iii) of the General Financial Rules along with such other actions as may be permissible under law.

Seal and Signature of Supplier