

REQUEST FOR QUOTATION



BHARAT HEAVY ELECTRICALS LIMITED
Electronics Division
PB No. 2606, Mysore Road Bangalore - 560026
INDIA

RFQ NUMBER:
AKSPROP104

RFQ DATE :
07.01.2025

Due Date/Day: 21.01.2025 TUE
Time : 13:00 HRS

MMI:PU:RF:003

(address for communication) :

(for all correspondence)

Purchase Executive : ABHISHEK
Phone : 26998102
Fax : 00918026989215
E-mail: singh.abhishek@bhel.in

This RFQ is for entering into Rate contract(RC)for 1 year.

SI No.	Description	Qty	Unit	Delivery qty	Delivery Date
1	TI0668104341 SOFT CROWBAR RESISTOR 2,71 Ohm + /-5% * HSN/SAC : 9032 [REDACTED] [REDACTED] SOFT CROWBAR RESISTOR 2,71 Ohm + /-5% 2800Vdc [REDACTED] As per Specification PS4452542 Rev No 01	500	NO	500	30.04.2025

Total Number of Items - 1

- 1.
- 2.

NOTES:

1. This RFQ is governed by:
 - a) INSTRUCTIONS TO BIDDERS/SELLERS and GENERAL CONDITIONS OF CONTRACT FOR PURCHASE available at <http://edn.bhel.com> (RFQ-PO Terms & Conditions)
 - b) Any other specific Terms and Conditions mentioned.
[REDACTED]
[REDACTED]

* The HSN/SAC no mentioned against the line items in the RFQ are indicative only.

For and On behalf of BHEL.

ABHISHEK
Control Equipment

1 OF 1

1. SCOPE

The Pre-Qualification Requirement document specifies the requirements to be met by the vendors (hereafter called Bidder) who wish to participate in the tender for supply of **softcrowbar resistor for rolling stock applications**. This PQR should be read in conjunction with the Purchase Technical Specification **PS/445/2542 R01 dtd 06.01.2016**.

2. CREDENTIAL

- a) The Bidder should be Manufacturer or authorized dealer / supplier of – **softcrowbar resistor** used in Rolling Stock applications. Documentary proof like relevant POs / invoice copies, valid authorization certificate etc shall be provided along with the offer.
- b) The Rolling Stock Applications under consideration shall include Locomotive, EMU, MEMU, Metro Trains, High Speed Trains, Train sets, Inspection Cars and Special Track Machines.
- c) For the vendors outside India, documentary proof for usage of the product in rolling stock applications shall be submitted. Acceptance of such certification shall be at BHEL's discretion.
- d) The Bidder should not be under the category of "hold" or "blacklisted" by any of the BHEL units/ any Govt of India PSU/ Govt of India/ statutory bodies of any state Govt as on date of bid submission. A declaration to this effect shall be submitted along with the offer.

3. QUALITY SYSTEM

- a) The manufacturer should have valid ISO 9001:2015 or latest certification covering the manufacturing and testing of the subject item
- b) The manufacturer should possess a clearly laid down quality Assurance Plan for the product covering the following aspects
Organization Chart, clearly indication the quality control set up
Qualification of key personnel and officials deployed in the quality control cell.
- c) Process Flow Chart indicating process of manufacture for an individual product or for a family of products, if the process is same.
- d) Quality Assurance System – Inspection and Testing plan to cover
 - Incoming material
 - Process control
 - Product control
 - System control
 - Testing facility
- e) Stage inspection details shall include the inspection procedure, inspection parameters, method of testing/ test procedure, sample sizes for destructive & non-destructive testing etc.
- f) Calibration scheme and status of calibration of test equipment
The process, testing and measuring equipment shall be duly calibrated by approved agency and the validity of calibration should be current.

4. GENERAL REQUIREMENTS

- a) It is preferred that the bidder is the manufacturer of this item. If the bidder is importing some portion of the components, then minimum value addition in India shall be 20%. Bidder to confirm this in the offer. Value addition less than 20% is not acceptable. A declaration to this effect shall be submitted along with the offer.
- b) The technical bid of bidders, which qualify technically but are not approved for the subject item by the Customer Approving Authority, shall be referred by BHEL to the customer Approving Authority for approval with intimation to the bidder. Consequent to the decision of Customer Approving Authority, the bidder shall be added to the vendor list of the subject item for future tenders. Concurrently BHEL shall consider placing developmental order on the bidder after assessing the capability of the bidder to manufacture / develop the subject item. However, BHEL shall treat the offer as “Not meeting” Pre-Qualification Criteria for the subject tender.
- c) The Customer Approving Authority shall be RDSO/CLW/BLW/PLW/ICF/RCF/MCF or any other agency as designated by the Customer.
- d) The bidder should possess a valid type test report, not older than five years, as per relevant standards mentioned in the specification with respect to time during the bid submission in case of catalog items. In case of custom made items, a bidder can submit the type test report of an item of similar or higher rating with a declaration for conducting the type test in case of award of order or developmental order. The bidder can also submit the test reports conducted in their own facility with the document of their lab accreditation. However, BHEL reserve it's right to insist on conducting the Type test again in a laboratory of it's choice.
- e) For the bid of vendors already qualified and appearing in BHEL's source list, the requirement of type test report and proof of supply shall not be applicable.

5. DOCUMENTATION TO BE SUBMITTED ALONG WITH OFFER

- a) Documentary proof for experience as per clause 2.a
- b) Clause by Clause compliance to the technical specification
- c) Declaration regarding status as per clause 2.d
- d) Declaration on MII (Make in India) as per clause 3.a
- e) Declaration for conducting Type Test as per clause 3.d



A4 – 12

**PURCHASE SPECIFICATION FOR
SOFT CROWBAR RESISTOR
GROUP: TRACTION ENGINEERING**

P.S NO. : PS4452542

REV. NO: 01

PAGE 00 OF 08

REVISION HISTORY SHEET

REV. NO.	DATE	NATURE OF CHANGE	REASONS	PREPARED BY	APPROVED BY
00	27.11.2015	FIRST ISSUE	--	Purushottama	R.SHEKAR
01	06.01.2016	Typographical errors corrected	--	Purushottama	R.SHEKAR

THIS DOCUMENT IS A SPECIFICATION CUM DATA SHEET. VENDOR TO GIVE CONFIRMATIONS AND DATA AS REQUIRED AND SUBMIT THE SAME TO BHEL / EDN, BANGALORE. ANY DEVIATIONS TO THIS DOCUMENT TO BE BROUGHT OUT CLEARLY BY VENDOR.

Note:

Reference document :
Material Code :

REVISIONS 01 DT: 06.01.2016

APPROVED BY: R.SHEKAR

PREPARED BY:

ISSUED BY

DATE

Purushottama Rao

TRACTION ENGG

06.01.2016

COPYRIGHT AND CONFIDENTIAL
The information on this document is the property of BHARAT HEAVY ELECTRICALS LIMITED.
It must not be used directly or indirectly in anyway detrimental to the interest of the company.



A4 – 10

**PURCHASE SPECIFICATION FOR
SOFT CROWBAR RESISTOR
GROUP: TRACTION ENGINEERING**

P.S NO. : PS4452542

REV. NO: 01

PAGE 01 OF 08

SPECIFICATION FOR SOFT CROWBAR RESISTOR

Brief description

The soft crow-bar is used to limit the DC-link voltage during dynamic conditions. The soft-crow bar resistor is controlled by a step-down chopper operating at an average switching frequency of 150 Hz.

**WIRING
DIAGRAM**

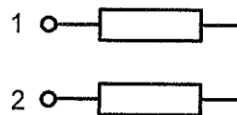


Fig1: Wiring Diagram



A4 – 11

**PURCHASE SPECIFICATION FOR
SOFT CROWBAR RESISTOR
GROUP: TRACTION ENGINEERING**

P.S NO. : PS4452542

REV. NO: 01

PAGE 02 OF 08

Detailed Specification

1. Technical Parameters

a)	Nominal Resistance Value at 20°C (1-2)	:	2.71 Ω \pm 5%
b)	Minimum Resistance	:	2.5 Ω
c)	Maximum Resistance at operating temperature and manufacturing tolerance	:	3.65 Ω
d)	Nominal Voltage	:	DC 2800V
e)	Maximum Voltage	:	DC 3300V
f)	Maximum Peak Voltage	:	DC 3800V
g)	Insulation Test Voltage	:	AC 6900V/50Hz/1min
h)	Maximum Current	:	DC 1360A
i)	Continuous Power Rating	:	20KW
j)	Maximum Temperature of the Resistive Material:	:	520°C
k)	Minimum Creeping Distance	:	85 mm
l)	Minimum Air Clearance	:	32 mm
m)	Cooling	:	Natural Convection
n)	Inductance	:	\leq 10μH
o)	Energy Rating	:	3*0.475 MWs
p)	Duty Cycle	:	As per Appendix I

COPYRIGHT AND CONFIDENTIAL

The information on this document is the property of BHARAT HEAVY ELECTRICALS LIMITED.
It must not be used directly or indirectly in anyway detrimental to the interest of the company.



A4 – 11

**PURCHASE SPECIFICATION FOR
SOFT CROWBAR RESISTOR
GROUP: TRACTION ENGINEERING**

P.S NO. : PS4452542

REV. NO: 01

PAGE 03 OF 08

q)	Degree of Protection	:	IP 20
r)	Total Weight of the Resistor	:	30 Kg ± 10%
s)	Thermal Capacity	:	2.73 KJ/K
t)	Thermal Resistance	:	0.018 K/W
v)	Cooling Time Constant	:	44 s
u)	Material of Resistor Element	:	AISI 310S
w)	Material of Enclosure	:	AISI 304 (1.4301)

2. Standards

Standard	Description	Notes
EN50125-1	Environmental conditions	
EN50124-1	Railway applications Isolation co-ordination, Basic requirements.	
IEC60077	Electric equipment for rolling stock	
IEC61287	Power converters	
IEC61376	Creepage and clearance	
IEC61373	Shock and vibration test	
IEC60322	Rules for ohmic resistors	

3. Functional requirements

Description	Value	Unit	Notes
operating hours traction converter	8640	hours/year	
operating hours resistor	<7300	hours/year	normal operation



A4 – 11

**PURCHASE SPECIFICATION
SOFT CROWBAR RESISTOR
GROUP: TRACTION ENGINEERING**

P.S NO. : PS4452542

REV. NO: 01

PAGE 04 OF 08

4. Ambient conditions / operating conditions

Description	Value	Unit	Notes
operation	-25..+75	°C	
temperature distribution over the year	+75	°C	10 days/year
	+65	°C	20 days/year
	+55	°C	90 days/year
	+40	°C	100 days/year
	< +40	°C	130 days/year
storage	-25..+70	°C	
average year temperature	+ 40	°C	
relative humidity	< 95	%	during app 3 - 4 months (rainy season) per year frequent condensation can occur
altitude	<1200	m	
pollution levels			
operation in coastal areas			
maximum PH	8.5		of water damp
max. concentration of sulphate	7	mg/liter	of water damp
max. concentration of chlorine	6	mg/liter	of water damp
maximum conductivity	130	μS/cm	of water damp
operation in desert terrain			
dust content in air	1.6	mg/m3	

COPYRIGHT AND CONFIDENTIAL

The information on this document is the property of BHARAT HEAVY ELECTRICALS LIMITED.
It must not be used directly or indirectly in anyway detrimental to the interest of the company.



A4 – 11

**PURCHASE SPECIFICATION
SOFT CROWBAR RESISTOR
GROUP: TRACTION ENGINEERING**

P.S NO. : P4452542

REV. NO: 01

PAGE 05 OF 08

5. Dimensional details

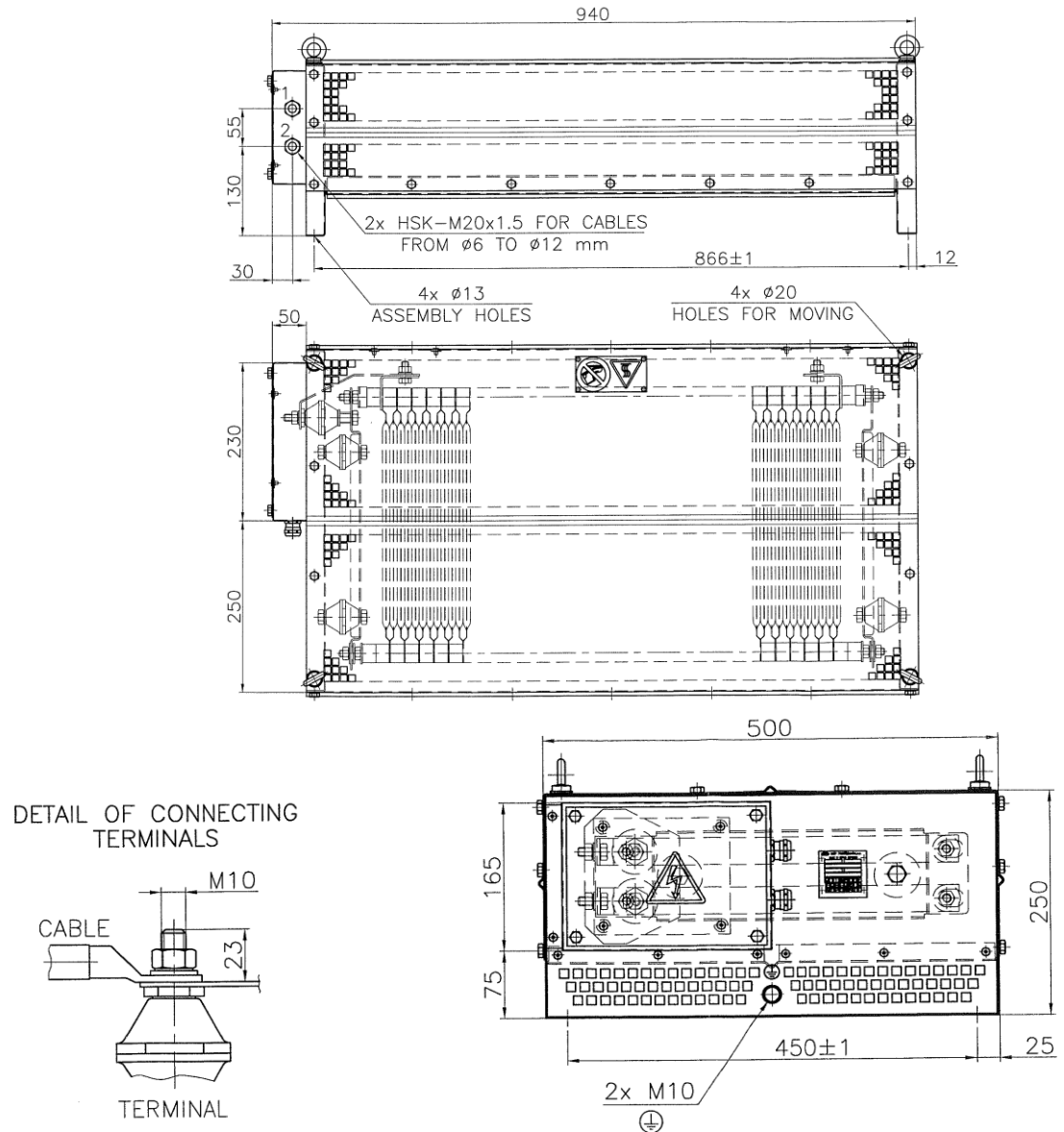


Fig 3: Dimensional Drawing

COPYRIGHT AND CONFIDENTIAL
The information on this document is the property of BHARAT HEAVY ELECTRICALS LIMITED.
It must not be used directly or indirectly in anyway detrimental to the interest of the company.



**PURCHASE SPECIFICATION
SOFT CROWBAR RESISTOR
GROUP: TRACTION ENGINEERING**

P.S NO. : PS4452542

REV. NO: 01

PAGE 06 OF 08

6. Testing

List of tests to be performed on prototype as follows

Sl No	Test	Acceptance criteria
1	Dimensional check	Dimensions to comply with the drawing
2	Check on creepage and clearance distances	Min. creepage 85mm and clearance 36mm
3	Check on rating label	Rating plate to have Make, Type no, Rated voltage, Rated Resistance, Sl no, year of manufacture and weight
4	Check on Ingress protection	The enclosure is IP 20 that means the cover protects against the incursion of foreign objects and is also used as a protection against accidental touch
5	Check on weight	30 Kg \pm 10%. i.e. within range of 27 Kg to 33 Kg
6	Measurement of Resistance	
6.1	Measurement of cold Resistance before temperature rise test	2.71 Ω \pm 5% i.e. within range of 2.5745 Ω - 2.8455 Ω at an ambient temperature of 20 Deg.
6.2	Measurement of cold Resistance after temperature rise test	Readings should not differ from the first values Indicated in clause 6.1 by more than 3%.
6.3	Measurement of Hot Resistance IMMEDIATELY AFTER temperature rise test	\leq 3.65 Ω
7	Check on Inductance	\leq 10 μ H
8	Dielectric test (Ref: 60077)	Carried out between the connection and earth terminals of the resistor with a voltage of AC 6900 V/ with a frequency of 50 Hz, for a period of 1 minute. No disruptive discharge or breakdown occurred during the test
9	Insulation resistance test	The measurement to carried out with 1000 V megger tester connected across terminals and frame of the resistor. Required minimum value: 5 M Ω
10	Temperature rise test ^{A)B)}	
10.1	Continuous power of 20 KW (Ambient Temp of 25 Deg)	Max temp of Active Material \leq 520 Deg
		Max temp of the connection terminals \leq 115 Deg
		Max Air temp 200mm above the resistor \leq 210 Deg
10.2	Repeated duty cycles (ref: APPENDIX I) (Ambient Temp of 25 Deg)	Max temp of Active Material \leq 490 Deg
		Max temp of the connection terminals \leq 80 Deg
		Max Air temp 200mm above the resistor \leq 200 Deg



**PURCHASE SPECIFICATION
SOFT CROWBAR RESISTOR
GROUP: TRACTION ENGINEERING**

P.S NO. : PS4452542

REV. NO: 01

PAGE 07 OF 08

11	Vibration and shock withstand test ^{A)}	To be done as per the standard IEC 61373. No visual damage and no change in resistance value should occur. Also the specimen has to pass insulation test.
----	--	---

- A) Visual inspection, Di electric test needs, measurement of cold resistance to be performed before and after the test.
B) Critical hot spot points needs to be identified before the test to monitor and record the temperature during the test.

COPYRIGHT AND CONFIDENTIAL
The information on this document is the property of BHARAT HEAVY ELECTRICALS LIMITED.
It must not be used directly or indirectly in anyway detrimental to the interest of the company.



**PURCHASE SPECIFICATION
SOFT CROWBAR RESISTOR
GROUP: TRACTION ENGINEERING**

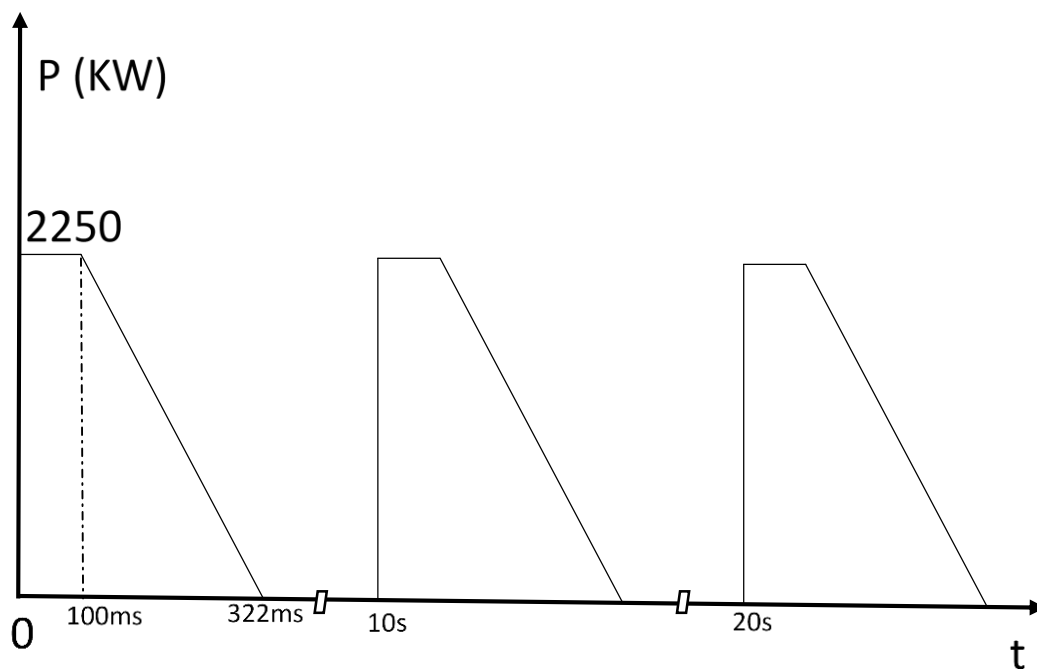
P.S NO. : PS4452452

REV. NO: 01

PAGE 08 OF 08

APPENDIX-I

Duty cycle Requirement for Temp rise test:



After 3 pulses there's a cooling down time of 10 minutes

COPYRIGHT AND CONFIDENTIAL
The information on this document is the property of BHARAT HEAVY ELECTRICALS LIMITED.
It must not be used directly or indirectly in anyway detrimental to the interest of the company.