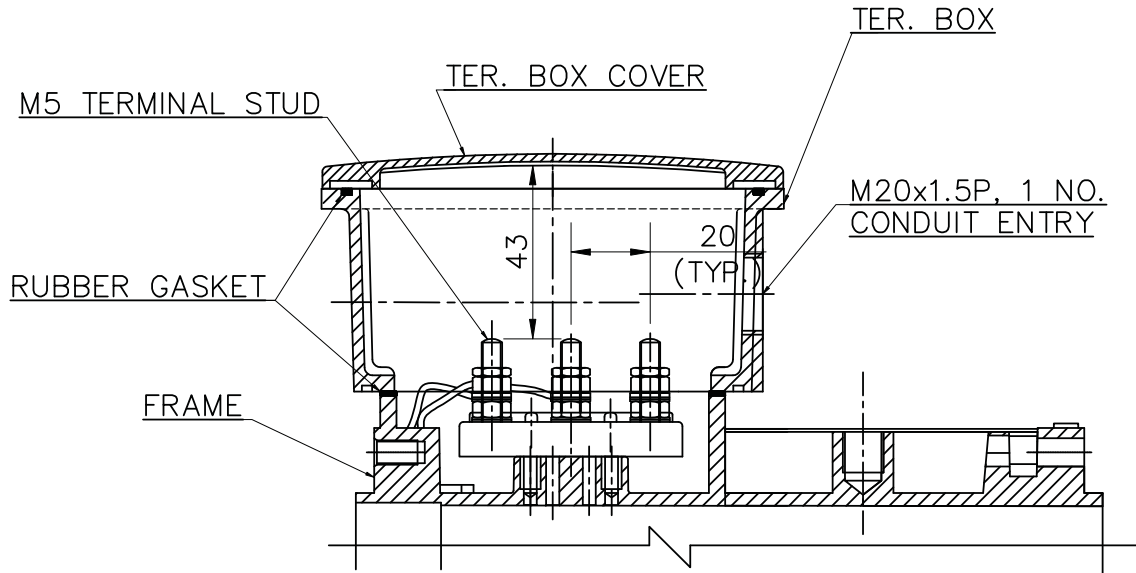
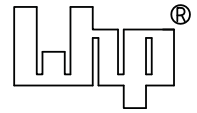
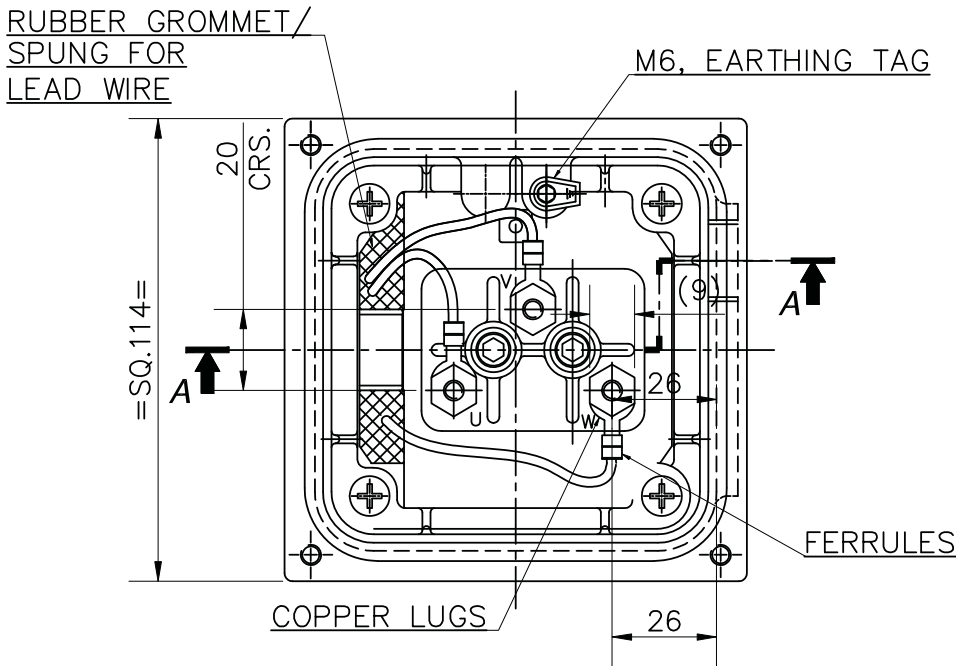


LAXMI HYDRAULICS PVT. LTD, SOLAPUR
TERMINAL BOX ARRANGEMENT FOR 100 AL-PDC FRAME



SECTION A-A




TER. BOX VIEW WITHOUT COVER

\\Ppk\d\lhpl DRAWING FILES\DRGS 3\G.A.DWG\MGAN\100\B3\MGAN100A0249.dwg

1	REFER SHEET NO. 01 OF 02.	17.08.19	SAT
REV. NO.	DETAIL OF CHANGE	DATE.	INTL.
ISSUE.NO.-01	REV.NO.-01	DATE: - 17.10.18	DRG.NO.: -MGAN100A0249
SHEET-2 OF 2	DRN.BY:- TAMBULE	CHD BY:-	APPD. BY:- GRM

1.00.00	TDS FOR 0.37 KW- 4 POLE MOTOR		
Sr. No.	Description	Unit	Vendor Data
1.01.00	Manufacturer		Laxmi Hydraulic Private Limited, India
1.02.00	Type and frame size		IE3 SQIM & 71
1.03.00	design code no.		IS/IEC 60034-1,IS 12615
1.04.00	Nos. required		Axial fan/ as per approved Layouts
1.05.00	Application		AS PER APPROVED FAN TDS
1.06.00	Specification & Codes		IS/IEC 60034
1.07.00	Capacity for		
	i) for specified climatic conditions (50 Deg C)	kW	0.37
	ii) At 40 Deg C ambient	kW	0.40
1.08.00	Location for installation		
1.09.00	Type of enclosure & ventilation		SAFE & TEFC
1.10.00	Degree of protection		IP:55
1.11.00	Type of duty		S1
1.12.00	No. of phases, frequency & voltage		3Ph,50Hz & 415V
1.13.00	Permissible variations in		
	a) Voltage	%	+/-10
	b) Frequency	%	+/-5
	c) Combined	%	10 (ABSOLUTE)
1.14.00	At rated voltage & frequency		
	a) Full load current	A	1.03
	b) Full load speed	A	1410
	c) No load current	A	0.80
1.15.00	Minimum permissible voltage during starting	V	332V (80%)
1.16.00	Maximum permissible time at minimum permissible voltage during running at full load.	Sec.	300
1.17.00	Maximum permissible time at 75% of rated voltage during running at full load.	Sec.	300
1.18.00	Whether motor stalls at 70% of rated voltage.		Shall not stall for 1 minute
1.19.00	Efficiency & power factor		
	Load (% of full load)		
	100	77.3	0.65
	50	70	0.52
	25	60	0.35
	0	-	0.19
	At start	-	0.80
	Duty Point		
1.20.00	Stator winding		
	i) Connection		STAR
	ii) Type & nos. of terminals Brought out		3.00
	iii) Resistance between terminals at 20°C		47.02
	iv) Resistance per phase at 20°C		23.51
	v) Inductance per phase		0.030
	vi) Capacitance per phase		NA
1.21.00	Starting current as % of full load current		
	i) With IS tolerance	%	600
	ii) Without IS tolerance	%	720
1.22.00	Torque at full load	kgm	0.26
1.23.00	Break away torque in % of full load torque	%	200
1.24.00	Pull up torque in % of full load torque	%	180
1.25.00	Pull out torque in % of full load torque	%	250
1.26.00	Starting time in sec. Without mechanism coupled or Mechanism coupled through hydraulic coupling when it may be presumed that load is transferred to motor shaft only after attaining almost full speed.		
	i) with rated voltage	Sec.	2
	ii) with 80% of rated voltage	Sec.	3
	iii) with 110% of rated voltage	Sec.	2
1.27.00	Starting time in sec. With mechanism coupled through Flexible coupling.		
	i) with rated voltage	Sec.	3
	ii) with 80% of rated voltage	Sec.	5
	iii) with 110% of rated voltage	Sec.	2
1.28.00	Safe stall time (hot motor)		
	i) At rated voltage	Sec.	10
	ii) At 80% of rated voltage	Sec.	16
	iii) At 110% of rated voltage	Sec.	8
1.29.00	Safe stall time (Cold motor)		
	i) At rated voltage	Sec.	20
	ii) At 80% of rated voltage	Sec.	31
	iii) At 110% of rated voltage	Sec.	17
1.30.00	Limiting motor temperature to determine safe stall time	Deg. C	185
1.31.00	Permissible maximum accelerating time (hot motor)		
	i) At rated voltage	Sec.	3
	ii) At 80% of rated voltage	Sec.	5
	iii) At 110% of rated voltage	Sec.	2
1.32.00	Permissible maximum accelerating time (cold motor)		
	i) At rated voltage	Sec.	4
	ii) At 80% of rated voltage	Sec.	6
	iii) At 110% of rated voltage	Sec.	3
1.33.00	Insulation		
	i) Class of insulation		F
	ii) Material & treatment of insulation		VPI
1.34.00	Whether insulation is suitable for 415 V, 6.6KV, ungrounded system		Suitable for 415V
1.35.00	Temperature rise under normal conditions over 50 deg C ambient temperature		
	i) By resistance method		70
	Degree centigrade over cooling water temp. for CACW motors.	Deg. C	NA
	Degree centigrade over cooling air temp. for CACA motor.	Deg. C	
	ii) By Thermometer method		NA
	Degree centigrade over cooling water temp. for CACW motor.	Deg. C	
	Degree centigrade over cooling air temp. for CACA motor.	Deg. C	

1.36.00	Method of starting		DOL
1.37.00.	Permissible starting duty cycles		2 HOT 3 COLD
1.38.00.	Stator thermal time constant		42/125
1.39.00	Maximum permissible voltage During high speed bus transfer & special design feature.		150%
1.40.00	Time required for voltage to decay down to when driving voltage is removed.		
	i) At 50% of rated voltage	Sec.	0.01
	ii) At 40% of rated voltage	Sec.	0.02
	iii) At 25% of rated voltage	Sec.	0.03
	iv) At 0% of rated voltage	Sec.	1
1.41.00	Method of cooling		TEFC
1.41.01	Details of water cooling system		NA
	i) No. of cooler		NA
	ii) Water requirement per cooler		NA
	iii) Losses removed by cooler		NA
	iv) Max. permissible temperature Of cooling water at inlet		NA
	v) Max. permissible temperature Of cooling water at outlet		NA
	vi) Maximum permissible pressure At water outlet		NA
	vii) Water pressure drop through the cooler		NA
	viii) Temp. of cold air coming Out & entering the machine For permissible cooling Water temperature of 310C		NA
	ix) Temp. rise of air passing through machine at full load.		NA
	x) Air pressure drop through The cooler		NA
	xi) Temp. rise of water through cooler		NA
	xii) Protection against leakage of water		NA
	xiii) Arrangement to ensure the water flow		NA
1.42.00	Bearings		
	i) Number		6203 ZZ /6203 ZZ @ DE/NDE
	ii) Type		DGGB
	iii) Lubrication system		PRELUBRICATED
	iv) Quantity of lubrican reqd. For both the bearings.		NA
	v) Life in hours at rated speed		40,000hrs
	vi) Recommended lubricant		NA
	vii) Bearing end play		1 mm max
	viii) Inlet oil pressure		NA
	ix) Temp. rise of oil		NA
	x) Max. permissible temp. of Bearing		110 deg c
	Xi) Max. permissible temp. of Oil		NA
	Xii) Permissible running time without forced oil at full load & full speed		NA
	xiii) Whether bearings are provided with 4 wire, platinum RTD having 100-ohm resistance at 0 Deg C for remote temp. indication.		NA
	xiv) Whether bearings are provided with local temperature indicator having two adjustable contacts rated for 2A at 240V AC or 0.2A at 220V DC.		NA
	xv) If forced lub oil system provided :		NA
	i) Qty of lubricant required for initial filling.		NA
	ii) Recommended period after which lubricant should be replaced		NA
	iii) Bearing cooling water requirement		NA
	iv) Max. permissible bearing cooling water inlet temp. (permissible)		NA
	v) Max. permissible bearing cooling water outlet temp.		NA
1.43.00.	Terminal designation correspond to direction of rotation (Facing driving end).		BIDIRECTIONAL MOTOR 
1.44.00	Terminal boxes with accessories separate terminal boxes provided.		
	i) Main		1 NO
	ii) Space heaters		NO
	iii) Winding temp. detectors		NO
	iv) Bearing temp. detectors		NO
	v) Moisture detectors		NO
	vi) Neutral terminals		NO
1.45.00	Main terminal box details		
	i) Type & Nos.		IP:55 & 1Nos
	ii) Fault level permissible for 0.25 sec.	kA	50
	iii) Location		TOP
	iv) Cable gland size & no.		M20 X1.5 P, 1 NO
	v) Direction of cable entry.		FROM NDE
	vi) Gland plate material and thickness		CI /AL & 6mm MINIMUM

1.46.00.	Space Heater		
	i) Number		NA
	ii) Location		NA
	iii) Capacity of each		NA
	iv) Total power requirement	kW	NA
	v) Voltage.	V	NA
	vi) Gland plate material and thickness		NA
1.47.00.	Details of 4 wire platinum RTD having 100 ohm resistance at 0 Deg C for winding temp. detector.		NA
	i) Nos. provided		NA
	ii) Location		NA
1.48.00	Whether CTs for differential protection are provided		NA
	i) If Yes, no. of CTs supplied alongwith motors.C.T. details		NA
	a) C.T. ratio		NA
	b) Knee point voltage		NA
	ii) S.C. withstand capacity		NA
1.49.00	Type of mounting		B3
1.50.00	Shaft orientation		HORIZONTAL
1.51.00	Shaft extension		AS PER GAD MGAN071A0127
1.52.00	Grounding pads size nos. & location		1 X M5
1.53.00	Method of coupling to driven mechanism		
1.54.00	Motor GD2		0.001
1.55.00	Lifting device		EYE BOLT
1.56.00	Weight		
	i) Weight of stator (wound)	kg	6 approx
	ii) Weight of rotor (wound)	kg	4 approx
	iii) Weight of base plate	kg	NA
	iv) Weight of cooler	kg	NA
	v) Net weight of motor	kg	Approx. 10 Kg
1.57.00	Shipping dimensions & weight		280x195x220 & 11 kg
1.58.00	Thermometer provided		NO
	i) In cold air path		NO
	ii) In hot air path		NO
	iii) For measurement of oil temp.		NO
1.59.00	Characteristic curves furnished		
	i) Speed vs. current at rated voltage (Yes / No)		Enclosed
	ii) Speed vs. torque at 110%, 100%, 90% and 80% of rated voltage (Yes / No)		Enclosed
	iii) Thermal withstand curve for hot & cold conditions. (Yes / No)		Enclosed
	iv) Efficiency vs. load (Yes / No)		Enclosed
	v) P.F. Vs. load (Yes / No)		Enclosed
	vi) Current vs. time (Yes / No)		Enclosed
	vii) Negative phase sequence curve (Yes / No)		Enclosed
1.60.00	Drawings furnished		
	i) General arrangement of motor (Yes / No)		YES
	ii) Main terminal box showing the method of terminating the incoming cables (Yes / No)		YES
	iii) Instruction manuals (Yes / No)		YES
	iv) Name Plate drawing (Yes/No)		NO
1.61.00	Rotor design as per specification		
1.62.00	Noise Level	dB	85 dB at 1 m
1.63.00	Vibration Pad (Yes / No)		NO
1.64.00	Drain Hole (two numbers with plug, one on either end of motor at bottom most point. (Yes / No)		NO
1.65.00	Painting shade		692 OF IS-5
1.66.00	Earthing		
	i) Body (Number & Size)		1 X M5
	ii) Terminal Box (Number & Size)		1 X M5

MKTG Ref No.:

D7PO1907021

LAXMI HYDRAULICS PVT LTD., B-11- MIDC CHINCHOLI , SOLAPUR.



SPEED VS TORQUE & CURRENT CHARACTERISTICS

CUSTOMER : M/s ADVANCE VENTILATION

INDENT NO. :

PO NO:

PO DATE:



PROJECT NAME :

kW : 0.37 POLE :

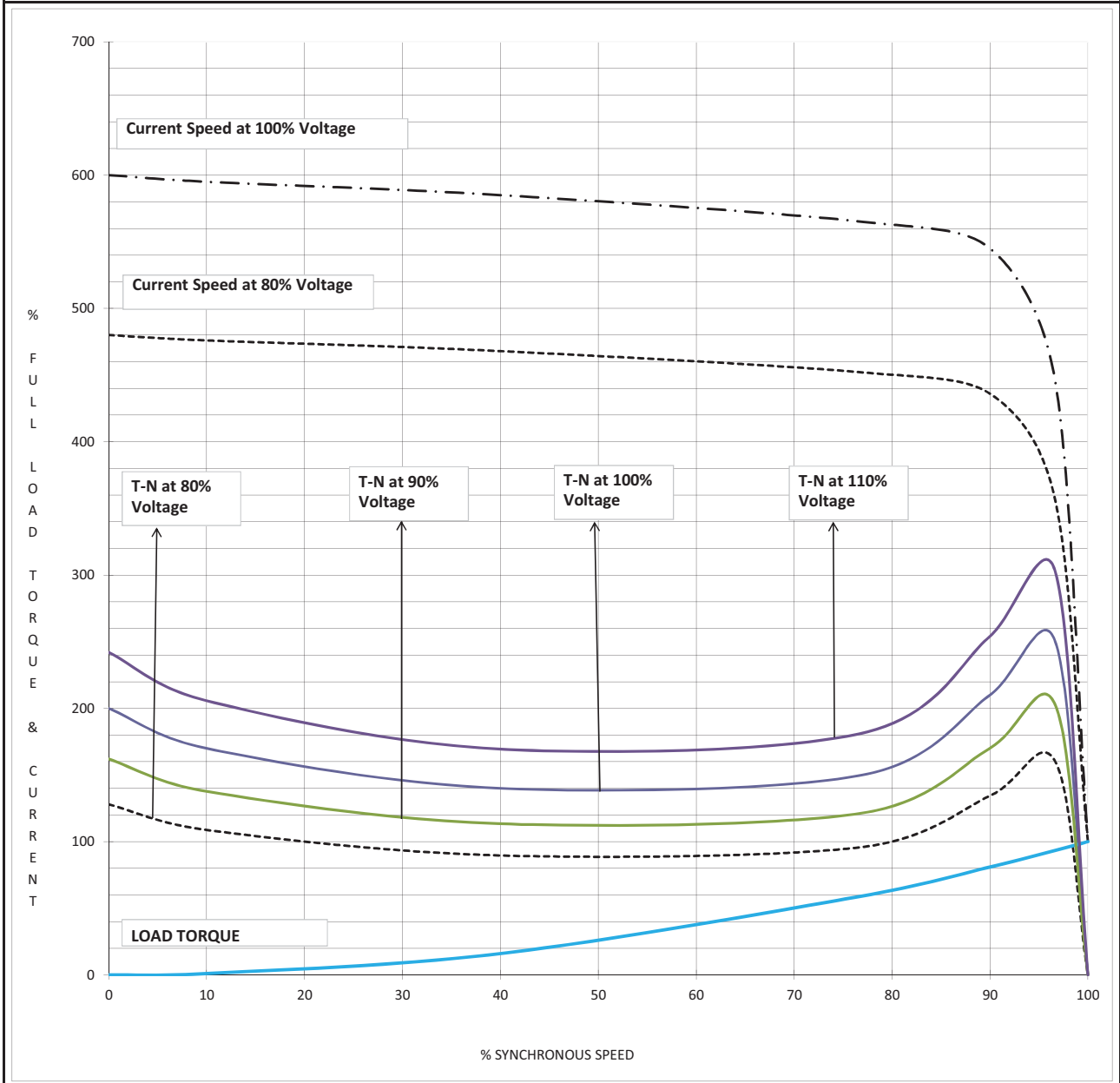
4

VOLTS :

415

QTY :

1



NOTE 1 ALL PERFORMANCE FIGURES ARE SUBJECT TO IS/IEC 60034-1 TOLERANCES,PARAMETERS MAY CHANGE DURING FINAL SUBMISSION OF DATASHEET AFTER GETTING THE ORDER.

2 STARTING CURRENT MEASUREMENT AS PER IS 12615 : 2018 CLAUSE NO 16.2.2.3.1,

3 PERFORMANCE CURVES ARE DOR DOL OPERATION ONLY.

			WDG NO			Prepared By	SSG	8/31/2019
2			GAD NO			Checked By	SNG	8/31/2019
1			T BOX NO					
NO	REVISION	SIGN	DATE			SIGN		DATE

MKTG Ref No.:

D7PO1907021

LAXMI HYDRAULICS PVT LTD. , B-11- MIDC CHINCHOLI , SOLAPUR.



LOAD VS EFF. & P.F.

CUSTOMER : M/s ADVANCE VENTILATION

INDENT NO. :

PO NO:

PO DATE:



IE3

PROJECT NAME :

KW : 0.37 POLE :

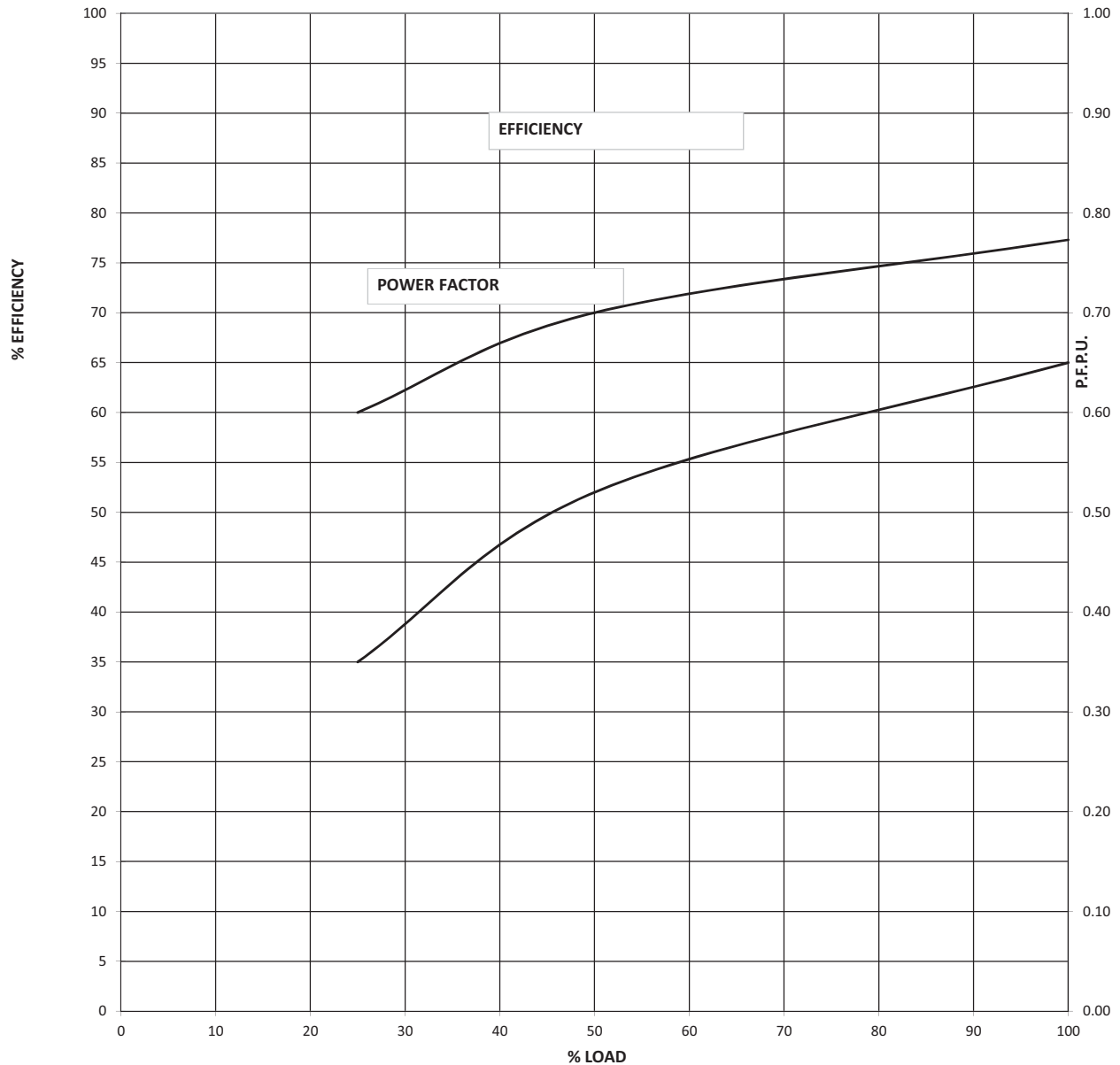
4

VOLTS :

415

QTY :

1



NOTE 1 ALL PERFORMANCE FIGURES ARE SUBJECT TO IS/IEC 60034-1 TOLERANCES,PARAMETERS MAY CHANGE DURING FINAL SUBMISSION OF DATASHEET AFTER GETTING THE ORDER.

2 STARTING CURRENT MEASUREMENT AS PER IS 12615 : 2018 CLAUSE NO 16.2.2.3.1,

3 PERFORMANCE CURVES ARE DOR DOL OPERATION ONLY.

			WDG NO				
2			GAD NO		Prepared By	SSG	8/31/2019
1			T BOX NO		Checked By	SNG	8/31/2019
NO	REVISION	SIGN	DATE		SIGN		DATE

MKTG Ref No.:

D7PO1907021

LAXMI HYDRAULICS PVT LTD. , B-11- MIDC CHINCHOLI , SOLAPUR.



STARTING CURRENT VS STARTING TIME AND THERMAL WITHSTAND TIME.

CUSTOMER : M/s ADVANCE VENTILATION

INDENT NO. :

PO NO:

PO DATE:



PROJECT NAME :

kW : 0.37 POLE :

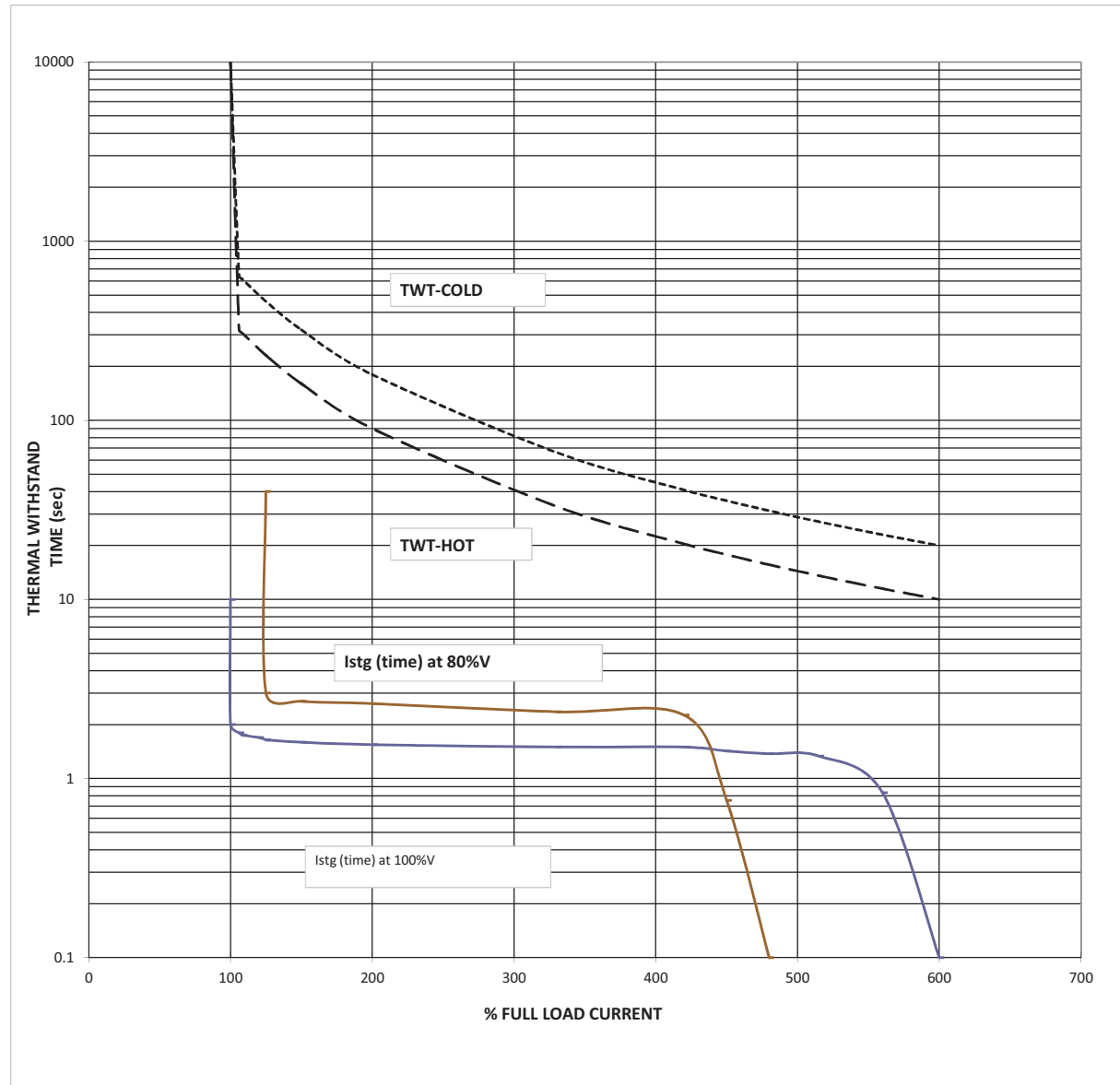
4

VOLTS :

415

QTY :

1



L. R. CURRENT at 100% voltage :	600	% OF FLA	THERMAL WITHSTAND TIME(sec):
Starting time at 100% voltage :	2	sec	AT100% RATED VOLTAGE (HOT) : 10
Starting time at 80% voltage :	3	sec	AT100% RATED VOLTAGE (COLD): 20

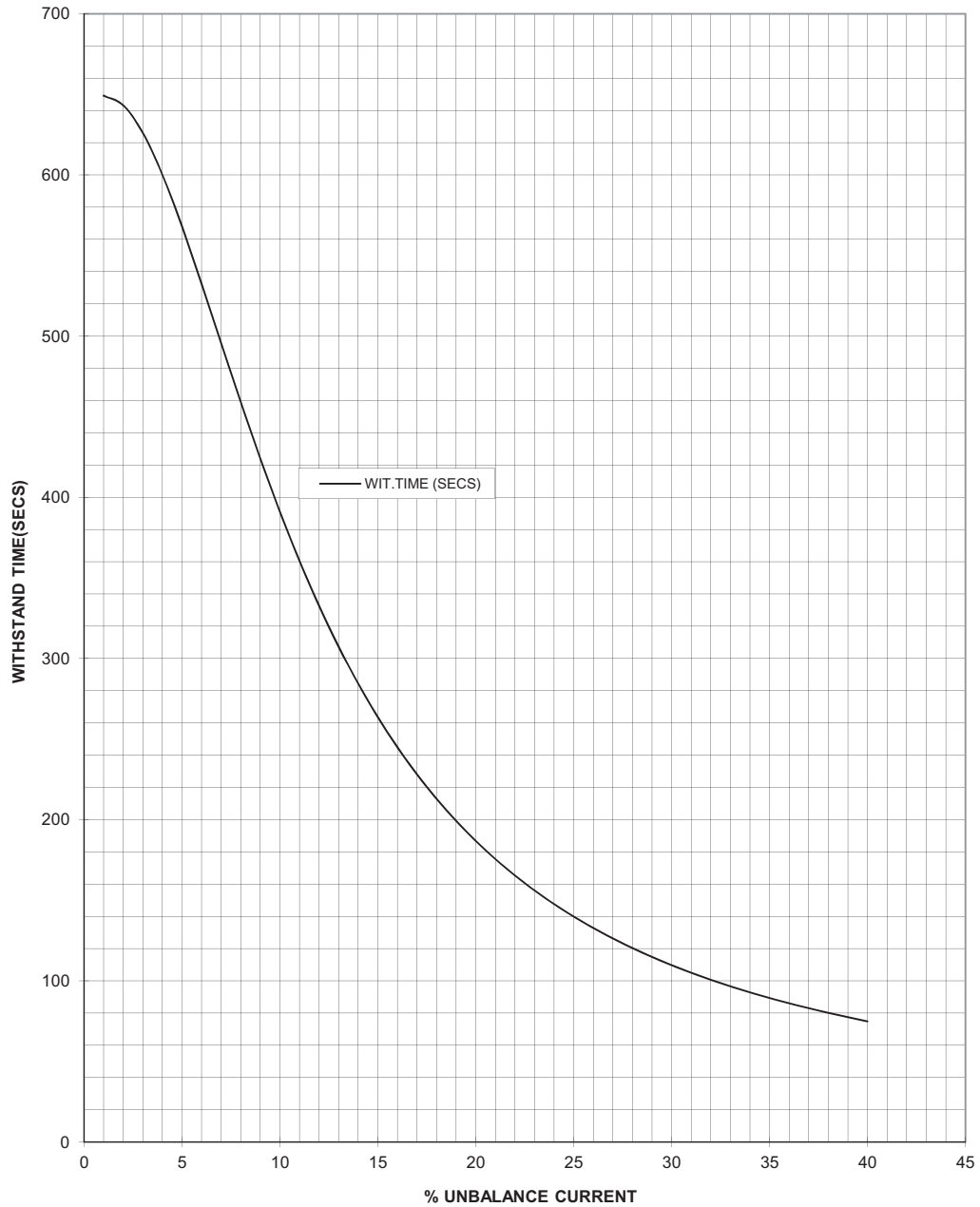
NOTE 1 ALL PERFORMANCE FIGURES ARE SUBJECT TO IS/IEC 60034-1 TOLERANCES,PARAMETERS MAY CHANGE DURING FINAL SUBMISSION OF DATASHEET AFTER GETTING THE ORDER.
 2 STARTING CURRENT MEASUREMENT AS PER IS 12615 : 2018 CLAUSE NO 16.2.2.3.1,
 3 PERFORMANCE CURVES ARE DOR DOL OPERATION ONLY.

		WDG NO		Prepared By	SSG	8/31/2019
2		GAD NO		Checked By	SNG	8/31/2019
1		T BOX NO				
NO	REVISION	SIGN	DATE	SIGN		DATE

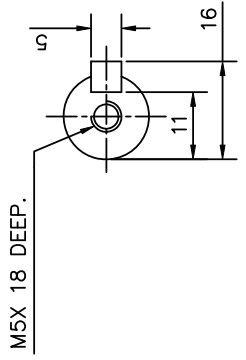
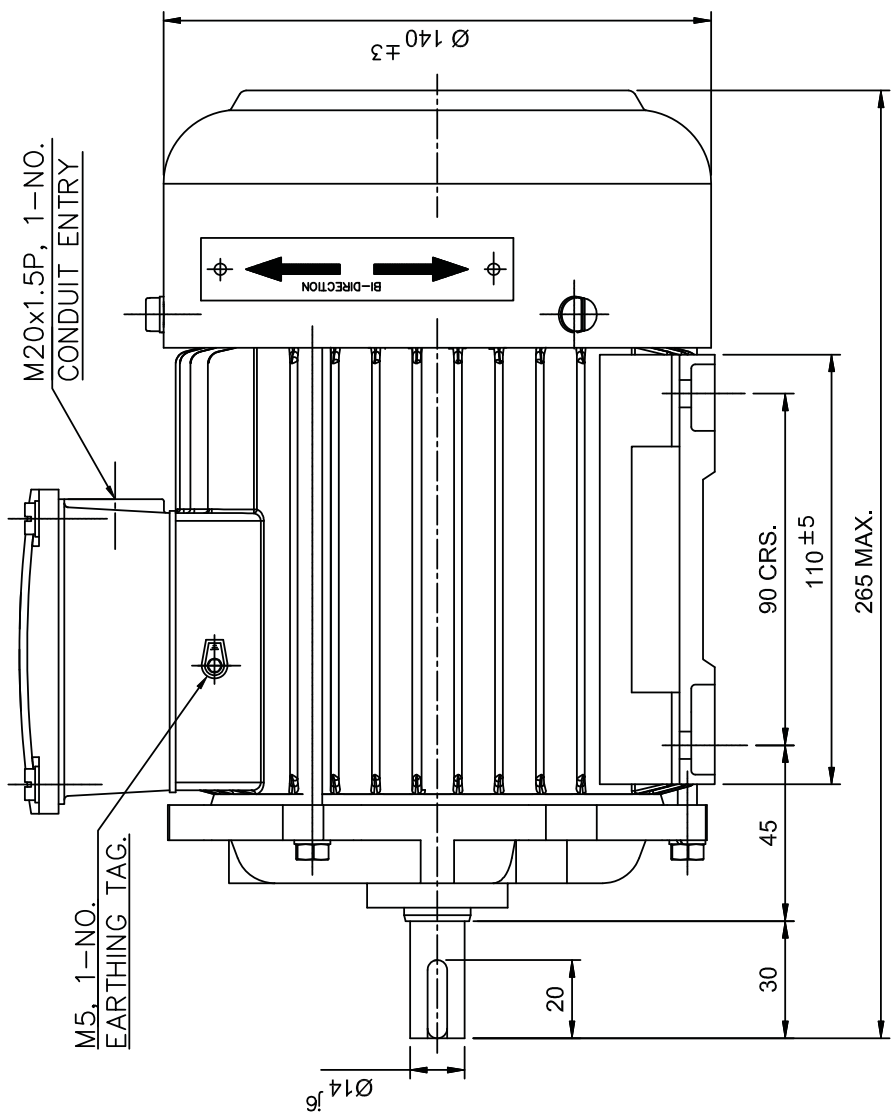


NEGATIVE SEQUENCE CHARACTERISTICS

CUSTOMER : M/s ADVANCE VENTILATION
WORKS ORDER NO. : **SAP NO:**
kW : 0.37 **POLE** : 4 **VOLTS** : 415 **QTY** : 1



2		PREP	SSG	8/27/2019	
1		APPD	SNG	8/27/2019	
NO	REVISION	SIGN/DATE		SIGN	DATE



SHAFT END DETAILS

SPECIFICATION

KW / HP	0.37/0.5
POLE	4
BEARING DE SIDE	6203 ZZ
BEARING NDE SIDE	6203 ZZ

MATERIAL OF CONSTRUCTION

FRAME	ALUMINIUM
END COVER (DE)	ALUMINIUM
END COVER (NDE)	CAST IRON
TER. BOX	ALUMINIUM
TER. BOX COVER	ALUMINIUM
SHAFT	CARBON STEEL

PRODUCT CODE: EB0882

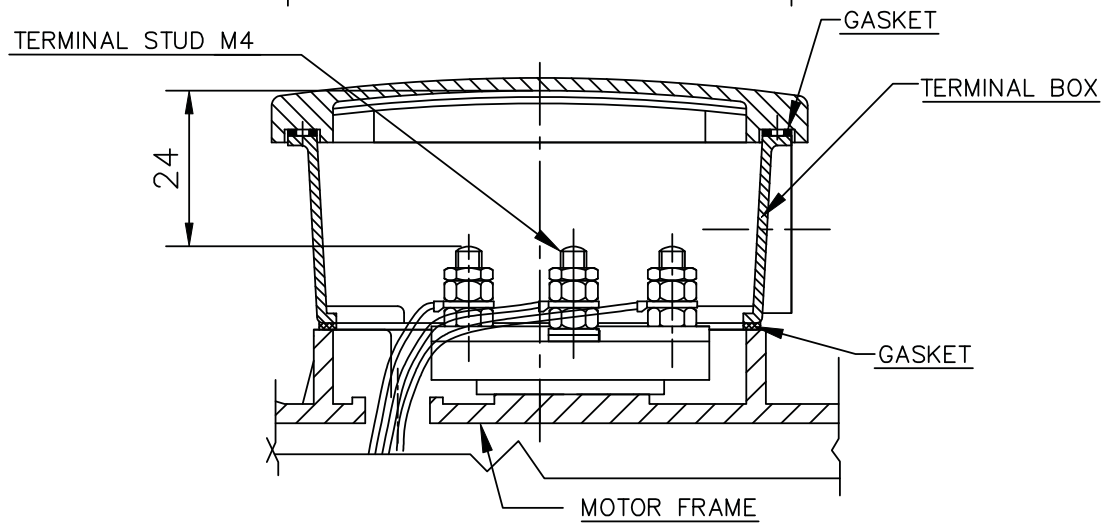
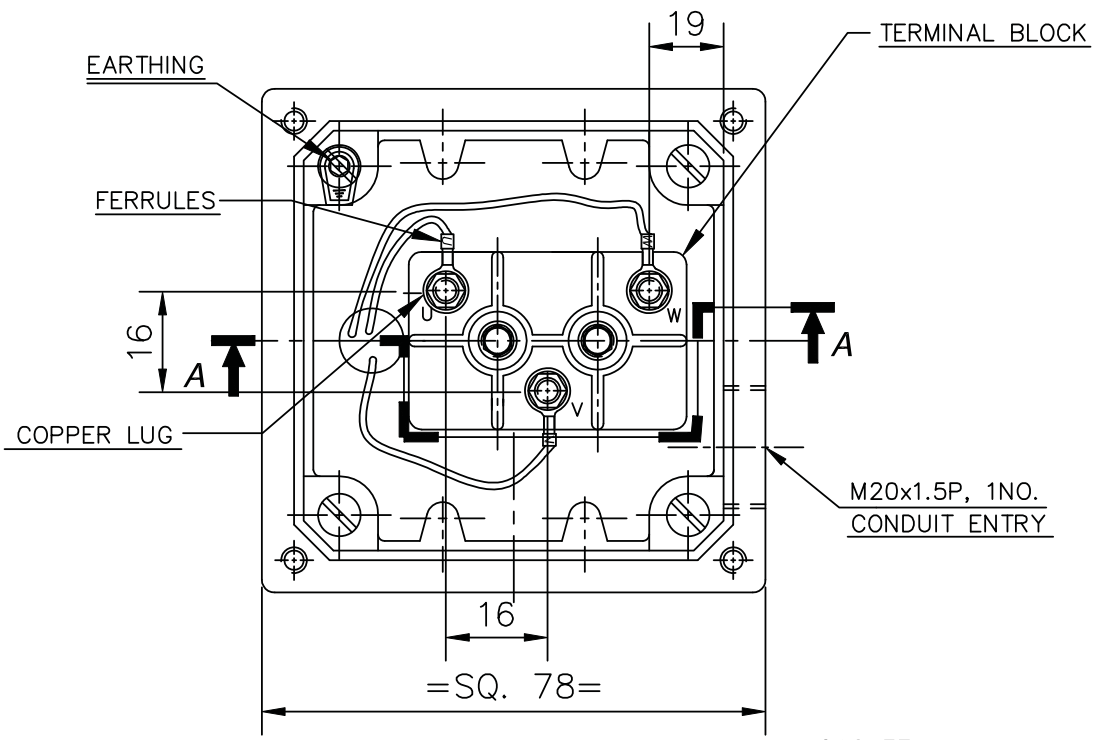
UNMENTIONED DIMS	OVER & UPTO	0.5-3	3-6	6-30	30-120	120-400	400-1000	1000-2000
LINEAR DIMS	TOLERANCE	±0.2	±0.3	±0.5	±0.8	±1.2	±2.0	±3.0
PERMISSIBLE DEVIATIONS FOR LENGTHS OF THE SHORTER SIDE OF THE ANGLE								
ANGULAR DIMS	OVER & UPTO	0-10	10-30	30-100	100-400	400-1000	1000-2000	2000-10000
ISO 2768-M	TOLERANCE	±1°	±1°30'	±2°	±2°30'	±3°	±4°	±5°

DRG. NO.	MGAN071A0127
ISSUE NO.	01
REV. NO.	01
DATE	16.08.19
DETAIL OF CHANGE	DIRECTION OF ROTATION N/P ADDED. TOTAL LENGTH 265 WAS 255.
INTL.	SAT

TITLE
 GENERAL ARRANGEMENT. DRG. FOR
 71 FRAME FOOT MOUNTED (B3) MOTOR (H/D).

hhp Laxmi Hydraulics Pvt.Ltd. SOLAPUR
 Website : www.hhp.co.in
 UNLESS OTHERWISE SPECIFIED ALL DIMS. ARE IN MM. DO NOT SCALE THE DRAWING.

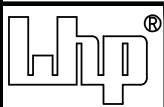
NAME	DATE
DGN.	
DRN.	TAMBULE 15.10.18
CHD.	15.10.18
APPD.	GRM 15.10.18
SCALE	1:1
SHEET	1 OF 2



SECTION A-A

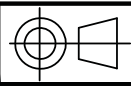
1	REFER SHEET NO. 01 OF 02.	16.08.19	SAT
REV. NO.	DETAIL OF CHANGE	DATE.	INTL.

DRG. REVIEW POINTS	UNMENTIONED TOLERANCES ARE AS PER IS:2102-1/ ISO 2768-1	LINEAR DIMNS.	OVER & UPTO TOLERANCE	0.5-3 ±0.2	3-6 ±0.3	6-30 ±0.5	30-120 ±0.8	120-400 ±1.2	400-1000 ±2	1000-2000 ±3	NAME.	DATE.	
Standardisation	PERMISSIBLE DEVIATIONS FOR LENGTHS OF THE SHORTER SIDE OF THE ANGLE.	ANGULAR DIMNS.	OVER & UPTO	0-10	10-50	50-120	120-400	400.....			DGN.		
Geometrical Reqmts.			TOLERANCE	±1°	±0°30'	±0°20'	±0°10'	±0°5'			DRN.	TAMBULE	15.10.18
Surface Finish	TITLE GENERAL ARRANGEMENT. DRG. FOR 71 FRAME FOOT MOUNTED (B3) MOTOR										CHD.	15.10.18	
Sectional Views/ Arrows.											APPD.	GRM	15.10.18
Material Grade												SCALE :- 1:1	
Process. Reqmts.												SHEET:-2 OF 2	
Gauging Reqmts.											DRG. NO.	MGAN071A0127	
Drng.No./ Rev.No./ Issue No.											ISSUE NO.	01	REV.NO. 01
Signature													



Laxmi Hydraulics Pvt. Ltd.
 Website : www.lhp.co.in

SOLAPUR



UNLESS OTHERWISE SPECIFIED ALL DIMNS. ARE IN MM. DO NOT SCALE THE DRAWING.

\\Ppk\d\HPL DRAWING FILES\DRGS 3\G.A.DWG\MGAN\071\B3\MGAN071A0127.dwg

MOTORS			
TDS FOR 2.2 KW-6 POLE MOTOR			
Sr. No.	Description	Unit	Vendor Data
1.01.00	Manufacturer		Laxmi Hydraulic private Limited, India
1.02.00	Type and frame size		IE3 SQIM & 112M
1.03.00	design code no.		IS/IEC 60034-1,IS12615
1.04.00	Nos. required		Axial Fan/As per approved layouts
1.05.00	Application		AS PER APPROVED FAN TDS
1.06.00	Specification & Codes		IS/IEC 60034-1
1.07.00	Capacity for		
	i) for specified climatic conditions (50 Deg C)	kW	2.2
	ii) At 40 Deg C ambient	kW	2.35
1.08.00	Location for installation		
1.09.00	Type of enclosure & ventilation		SAFE & TEFC
1.10.00	Degree of protection		IP:55
1.11.00	Type of duty		S1
1.12.00	No. of phases, frequency & voltage		3Ph,50Hz & 415V
1.13.00	Permissible variations in		
	a) Voltage	%	+/-10
	b) Frequency	%	+/-5
	c) Combined	%	10 (ABSOLUTE)
1.14.00	At rated voltage & frequency		
	a) Full load current	A	4.78
	b) Full load speed	A	950
	c) No load current	A	2.70
1.15.00	Minimum permissible voltage during starting	V	332V (80%)
1.16.00	Maximum permissible time at minimum permissible voltage during running at full load.	Sec.	300
1.17.00	Maximum permissible time at 75% of rated voltage during running at full load.	Sec.	300
1.18.00	Whether motor stalls at 70% of rated voltage.		Shall not stall for 1 minute
1.19.00	Efficiency & power factor		
	Load (% of full load)		
	100		84.3 0.76
	50		83 0.65
	25		80 0.42
	0		- 0.11
	At start		- 0.65
	Duty Point		
1.20.00	Stator winding		
	i) Connection		STAR
	ii) Type & nos. of terminals Brought out		3.00
	iii) Resistance between terminals at 20°C		6.66
	iv) Resistance per phase at 20°C		3.33
	v) Inductance per phase		0.030
	vi) Capacitance per phase		NA
1.21.00	Starting current as % of full load current		
	i) With IS tolerance	%	600
	ii) Without IS tolerance	%	720
1.22.00	Torque at full load	kgm	2.26
1.23.00	Break away torque in % of full load torque	%	160
1.24.00	Pull up torque in % of full load torque	%	150
1.25.00	Pull out torque in % of full load torque	%	210
1.26.00	Starting time in sec. Without mechanism coupled or Mechanism coupled through hydraulic coupling when it may be presumed that load is transferred to motor shaft only after attaining almost full speed.		
	i) with rated voltage	Sec.	2
	ii) with 80% of rated voltage	Sec.	3
	iii) with 110% of rated voltage	Sec.	2
1.27.00	Starting time in sec. With mechanism coupled through Flexible coupling.		
	i) with rated voltage	Sec.	3
	ii) with 80% of rated voltage	Sec.	5
	iii) with 110% of rated voltage	Sec.	2
1.28.00	Safe stall time (hot motor)		
	i) At rated voltage	Sec.	10
	ii) At 80% of rated voltage	Sec.	16
	iii) At 110% of rated voltage	Sec.	8
1.29.00	Safe stall time (Cold motor)		
	i) At rated voltage	Sec.	20
	ii) At 80% of rated voltage	Sec.	31
	iii) At 110% of rated voltage	Sec.	17
1.30.00	Limiting motor temperature to determine safe stall time	Deg. C	185
1.31.00	Permissible maximum accelerating time (hot motor)		
	i) At rated voltage	Sec.	3
	ii) At 80% of rated voltage	Sec.	5
	iii) At 110% of rated voltage	Sec.	2
1.32.00	Permissible maximum accelerating time (cold motor)		
	i) At rated voltage	Sec.	4
	ii) At 80% of rated voltage	Sec.	6
	iii) At 110% of rated voltage	Sec.	3
1.33.00	Insulation		
	i) Class of insulation		F
	ii) Material & treatment of insulation		VPI
1.34.00	Whether insulation is suitable for 415 V, 6.6KV, ungrounded system		Suitable for 415V

1.35.00	Temperature rise under normal conditions over 50 deg C ambient temperature		
	i) By resistance method		70
	Degree centigrade over cooling water temp. for CACW motors.	Deg. C	NA
	Degree centigrade over cooling air temp. for CACA motor.	Deg. C	
	ii) By Thermometer method		NA
	Degree centigrade over cooling water temp. for CACW motor.	Deg. C	
	Degree centigrade over cooling air temp. for CACA motor.	Deg. C	
1.36.00	Method of starting		DOL
1.37.00.	Permissible starting duty cycles		2 HOT 3 COLD
1.38.00.	Stator thermal time constant		42/125
1.39.00	Maximum permissible voltage During high speed bus transfer & special design feature.		150%
1.40.00	Time required for voltage to decay down to when driving voltage is removed.		
	i) At 50% of rated voltage	Sec.	0.01
	ii) At 40% of rated voltage	Sec.	0.02
	iii) At 25% of rated voltage	Sec.	0.03
	iv) At 0% of rated voltage	Sec.	-
1.41.00	Method of cooling		TEFC
1.41.01	Details of water cooling system		NA
	i) No. of cooler		NA
	ii) Water requirement per cooler		NA
	iii) Losses removed by cooler		NA
	iv) Max. permissible temperature Of cooling water at inlet		NA
	v) Max. permissible temperature Of cooling water at outlet		NA
	vi) Maximum permissible pressure At water outlet		NA
	vii) Water pressure drop through the cooler		NA
	viii) Temp. of cold air coming Out & entering the machine For permissible cooling Water temperature of 310C		NA
	ix) Temp. rise of air passing through machine at full load.		NA
	x) Air pressure drop through The cooler		NA
	xi) Temp. rise of water through cooler		NA
	xii) Protection against leakage of water		NA
	xiii) Arrangement to ensure the water flow		NA
1.42.00	Bearings		
	i) Number		6306 ZZ/6306 ZZ @ DE/NDE
	ii) Type		DGBB
	iii) Lubrication system		PRELUBRICATED
	iv) Quantity of lubrican reqd. For both the bearings.		NA
	v) Life in hours at rated speed		40,000hrs
	vi) Recommended lubricant		NA
	vii) Bearing end play		NA
	viii) Inlet oil pressure		NA
	ix) Temp. rise of oil		NA
	x) Max. permissible temp. ofBearing		110 DEGREE C
	Xi) Max. permissible temp. of Oil		NA
	Xii) Permissible running time without forced oil at full load & full speed		NA
	xiii) Whether bearings are provided with 4 wire, platinum RTD having 100-ohm resistance at 0 Deg C for remote temp. indication.		NA
	xiv) Whether bearings are provided with local temperature indicator having two adjustable contacts rated for 2A at 240V AC or 0.2A at 220V DC.		NA
	xv) If forced lub oil system provided :		NA
	i) Qty of lubricant required for initial filling.		NA
	ii) Recommended period after which lubricant should be replaced		NA
	iii) Bearing cooling water requirement		NA
	iv) Max. permissible bearing cooling water inlet temp. (permissible)		NA
	v) Max. permissible bearing cooling water outlet temp.		NA
1.43.00.	Terminal designation correspond to direction of rotation (Facing driving end).		BIDIRECTIONAL MOTOR 
1.44.00	Terminal boxes with accessories separate terminal boxes provided.		
	i) Main		1 NO
	ii) Space heaters		NO
	iii) Winding temp. detectors		NO
	iv) Bearing temp. detectors		NO
	v) Moisture detectors		NO
	vi) Neutral terminals		NO
1.45.00	Main terminal box details		
	i) Type & Nos.		IP:55 & 1Nos
	ii) Fault level permissible for 0.25 sec.	kA	50
	iii) Location		LHS FROM NDE
	iv) Cable gland size & no.		M20X1.5P, 1NO
	v) Direction of cable entry.		FROM NDE
	vi) Gland plate material and thickness		CI/AL & 6 mm MINIMUM

1.46.00.	Space Heater		
	i) Number		NA
	ii) Location		NA
	iii) Capacity of each		NA
	iv) Total power requirement	kW	NA
	v) Voltage.	V	NA
	vi) Gland plate material and thickness		NA
1.47.00.	Details of 4 wire platinum RTD having 100 ohm resistance at 0 Deg C for winding temp. detector.		NA
	i) Nos. provided		NA
	ii) Location		NA
1.48.00	Whether CTs for differential protection are provided		NA
	i) If Yes, no. of CTs supplied alongwith motors.C.T. details		NA
	a) C.T. ratio		NA
	b) Knee point voltage		NA
	ii) S.C. withstand capacity		NA
1.49.00	Type of mounting		B3
1.50.00	Shaft orientation		HORIZONTAL
1.51.00	Shaft extension		AS PER GAD MGAN112A0246
1.52.00	Grounding pads size nos. & location		2 X M6
1.53.00	Method of coupling to driven mechanism		
1.54.00	Motor GD2		0.044
1.55.00	Lifting device		EYE BOLT
1.56.00	Weight		
	i) Weight of stator (wound)	kg	24 APPROX
	ii) Weight of rotor (wound)	kg	16 APPROX
	iii) Weight of base plate	kg	NA
	iv) Weight of cooler	kg	NA
	v) Net weight of motor	kg	Approx. 30 Kg
1.57.00	Shipping dimensions & weight		650X395X480 & 33 kg
1.58.00	Thermometer provided		NO
	i) In cold air path		NO
	ii) In hot air path		NO
	iii) For measurement of oil temp.		NO
1.59.00	Characteristic curves furnished		
	i) Speed vs. current at rated voltage (Yes / No)		Enclosed
	ii) Speed vs. torque at 110%, 100%, 90% and 80% of rated voltage (Yes / No)		Enclosed
	iii) Thermal withstand curve for hot & cold conditions. (Yes / No)		Enclosed
	iv) Efficiency vs. load (Yes / No)		Enclosed
	v) P.F. Vs. load (Yes / No)		Enclosed
	vi) Current vs. time (Yes / No)		Enclosed
	vii) Negative phase sequence curve (Yes / No)		Enclosed
1.60.00	Drawings furnished		
	i) General arrangement of motor (Yes / No)		YES
	ii) Main terminal box showing the method of terminating the incoming cables (Yes / No)		YES
	iii) Instruction manuals (Yes / No)		YES
	iv) Name Plate drawing (Yes/No)		NO
1.61.00	Rotor design as per specification		IS 648
1.62.00	Noise Level	dB	85 dB at 1 m
1.63.00	Vibration Pad (Yes / No)		NO
1.64.00	Drain Hole (two numbers with plug, one on either end of motor at bottom most point. (Yes / No)		NO
1.65.00	Painting shade		692 OF IS-5
1.66.00	Earthing		
	i) Body (Number & Size)		2 X M6
	ii) Terminal Box (Number & Size)		1 X M6

MKTG Ref No.:

D7PO1911135

LAXMI HYDRAULICS PVT LTD., B-11- MIDC CHINCHOLI , SOLAPUR.



SPEED VS TORQUE & CURRENT CHARACTERISTICS

CUSTOMER : M/s ADVANCE VENTILATION

INDENT NO. :

PO NO:

PO DATE:



PROJECT NAME :

kW : 2.2 POLE :

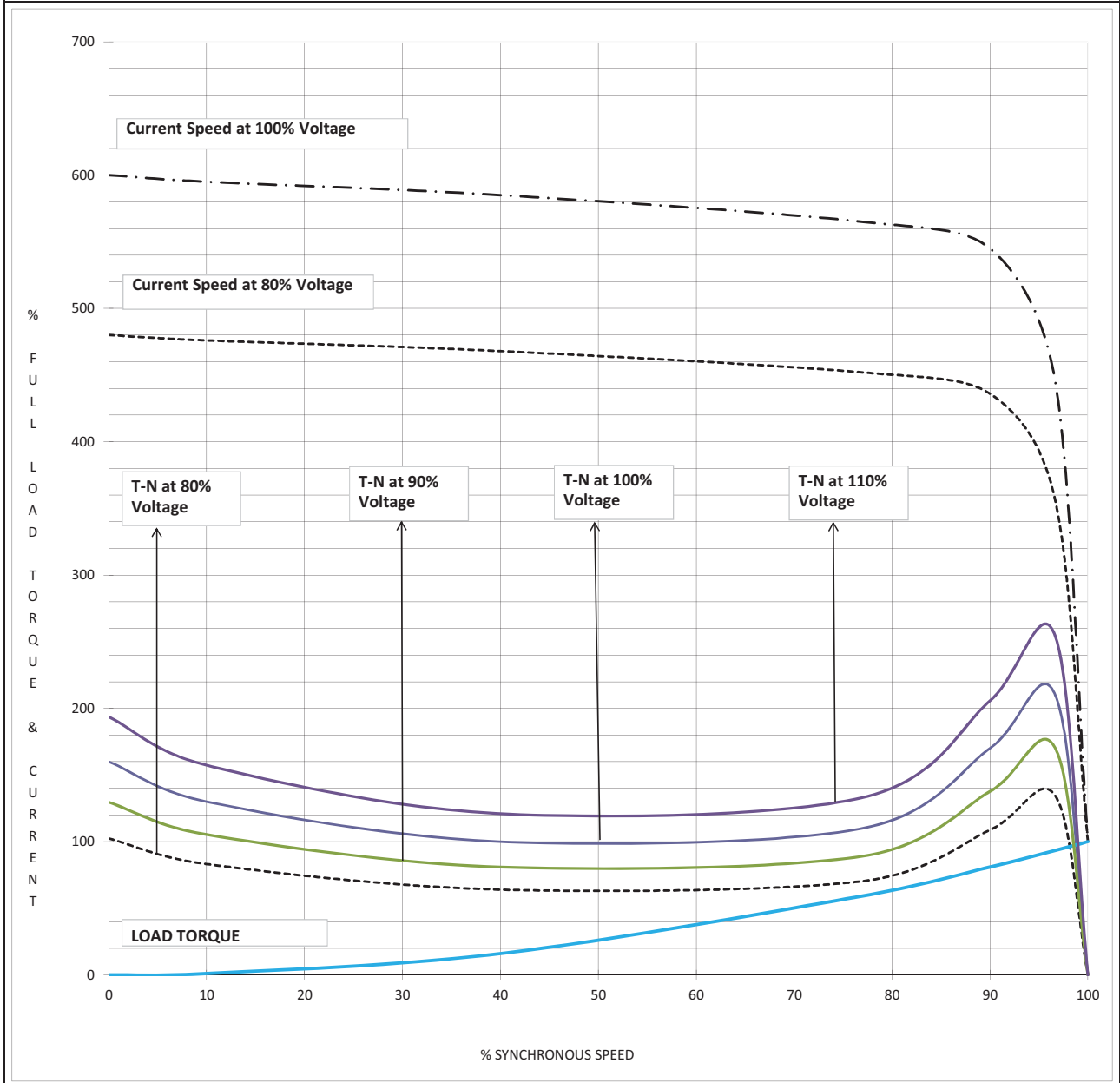
6

VOLTS :

415

QTY :

1



NOTE 1 ALL PERFORMANCE FIGURES ARE SUBJECT TO IS/IEC 60034-1 TOLERANCES,PARAMETERS MAY CHANGE DURING FINAL SUBMISSION OF DATASHEET AFTER GETTING THE ORDER.

2 STARTING CURRENT MEASUREMENT AS PER IS 12615 : 2018 CLAUSE NO 16.2.2.3.1,

3 PERFORMANCE CURVES ARE DOR DOL OPERATION ONLY.

			WDG NO			Prepared By	SSG	11/25/2019
2			GAD NO			Checked By	SNG	11/25/2019
1			T BOX NO					
NO	REVISION	SIGN	DATE			SIGN		DATE

MKTG Ref No.:

D7PO1911135

LAXMI HYDRAULICS PVT LTD. , B-11- MIDC CHINCHOLI , SOLAPUR.



LOAD VS EFF. & P.F.

CUSTOMER : M/s ADVANCE VENTILATION

INDENT NO. :

PO NO:

PO DATE:



IE3

PROJECT NAME :

kW : 2.2 POLE :

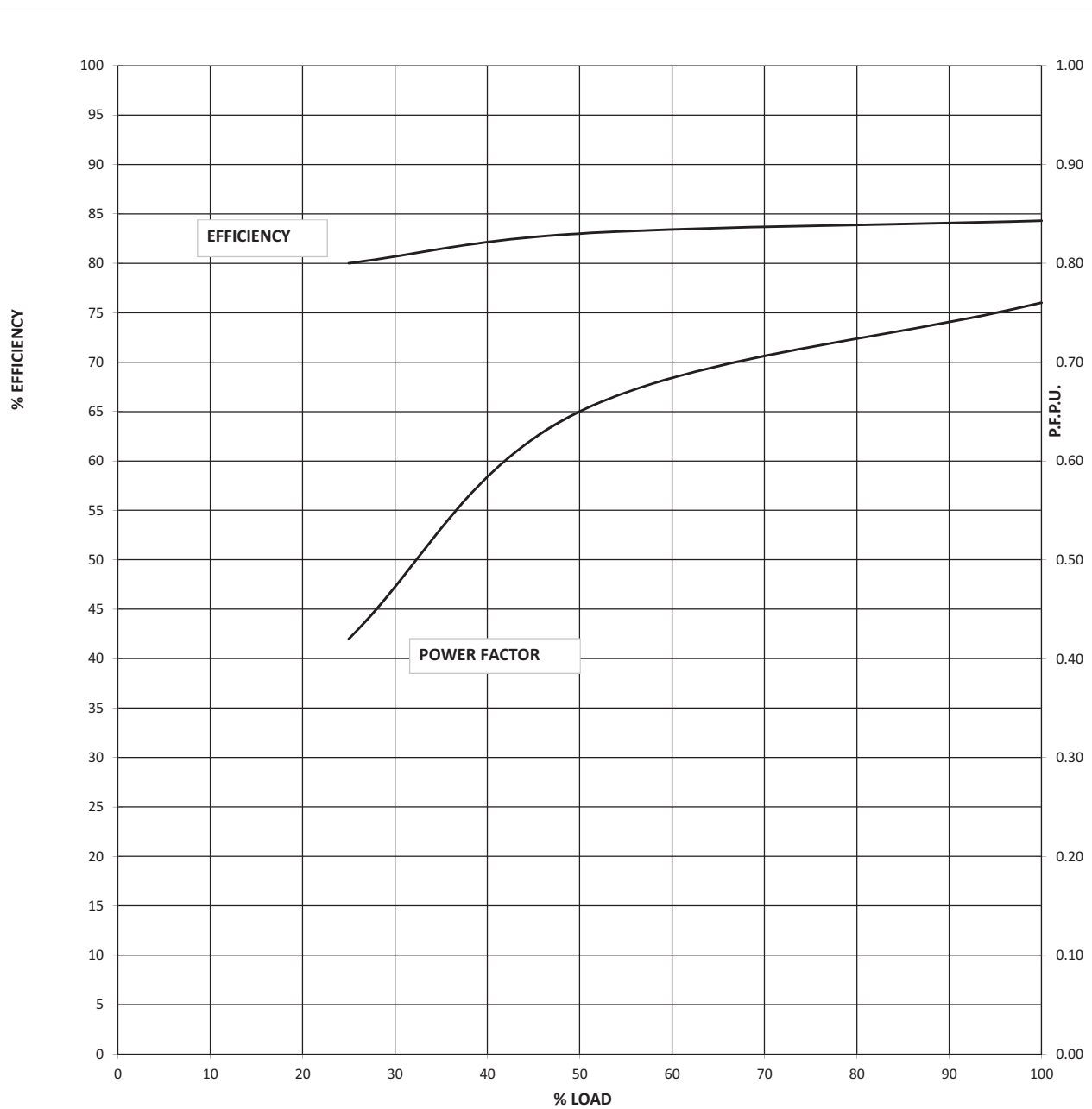
6

VOLTS :

415

QTY :

1



NOTE 1 ALL PERFORMANCE FIGURES ARE SUBJECT TO IS/IEC 60034-1 TOLERANCES,PARAMETERS MAY CHANGE DURING FINAL SUBMISSION OF DATASHEET AFTER GETTING THE ORDER.

2 STARTING CURRENT MEASUREMENT AS PER IS 12615 : 2018 CLAUSE NO 16.2.2.3.1,

3 PERFORMANCE CURVES ARE DOR DOL OPERATION ONLY.

NO	REVISION	SIGN	DATE	WDG NO	GAD NO	T BOX NO	Prepared By	SSG	11/25/2019
2							Checked By	SNG	11/25/2019
1							SIGN		DATE

MKTG Ref No.:

D7PO1911135

LAXMI HYDRAULICS PVT LTD. , B-11- MIDC CHINCHOLI , SOLAPUR.



STARTING CURRENT VS STARTING TIME AND THERMAL WITHSTAND TIME.

CUSTOMER : M/s ADVANCE VENTILATION

INDENT NO. :

PO NO:

PO DATE:



IE3

PROJECT NAME :

KW :

2.2

POLE :

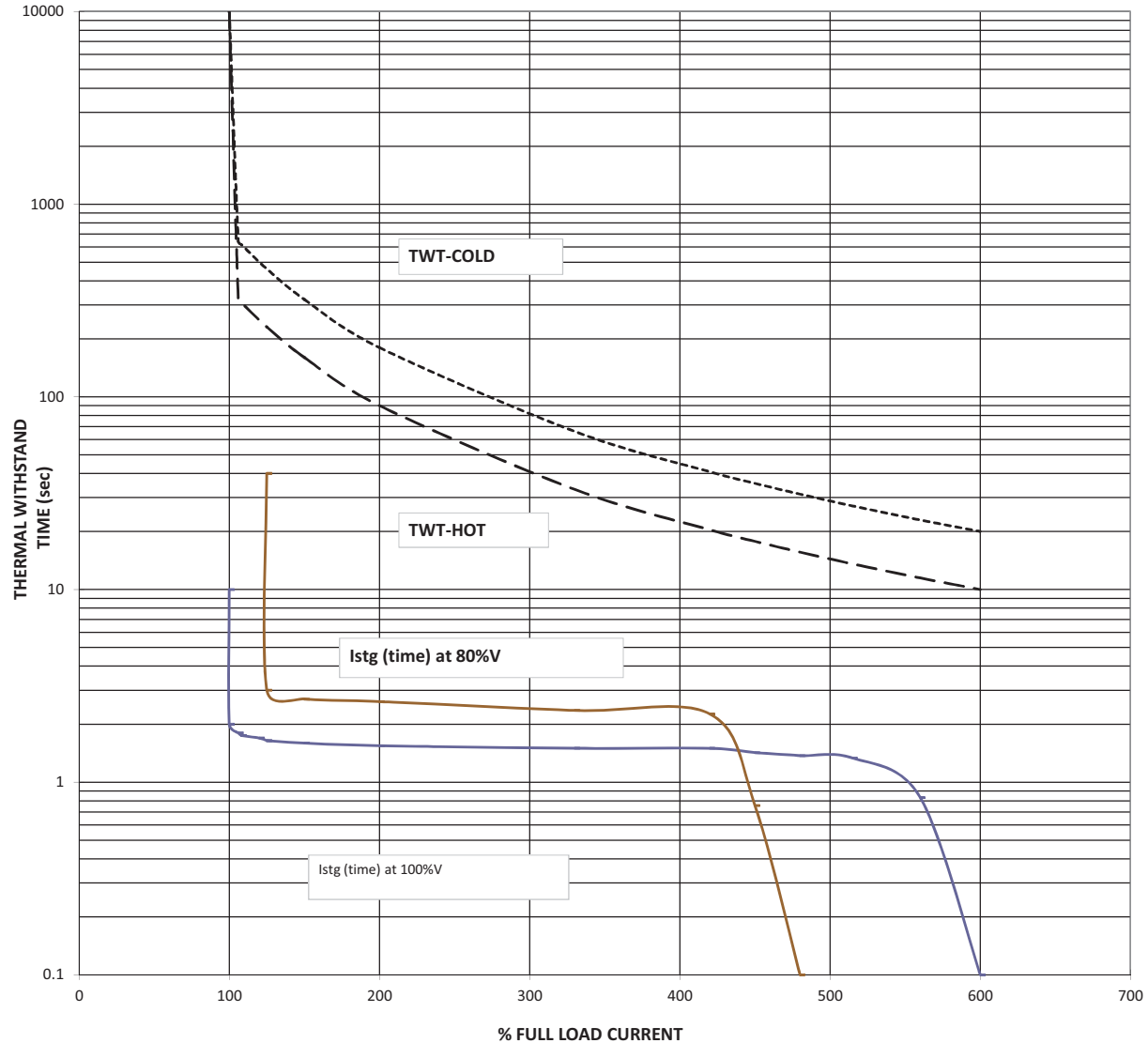
6

VOLTS :

415

QTY :

1



L. R. CURRENT at 100% voltage :

600

% OF FLA

THERMAL WITHSTAND TIME(sec):

Starting time at 100% voltage :

2

sec

AT100% RATED VOLTAGE (HOT) :

10

Starting time at 80% voltage :

3

sec

AT100% RATED VOLTAGE (COLD):

20

NOTE 1

ALL PERFORMANCE FIGURES ARE SUBJECT TO IS/IEC 60034-1 TOLERANCES,PARAMETERS MAY CHANGE DURING FINAL SUBMISSION OF DATASHEET AFTER GETTING THE ORDER.

2 STARTING CURRENT MEASUREMENT AS PER IS 12615 : 2018 CLAUSE NO 16.2.2.3.1,

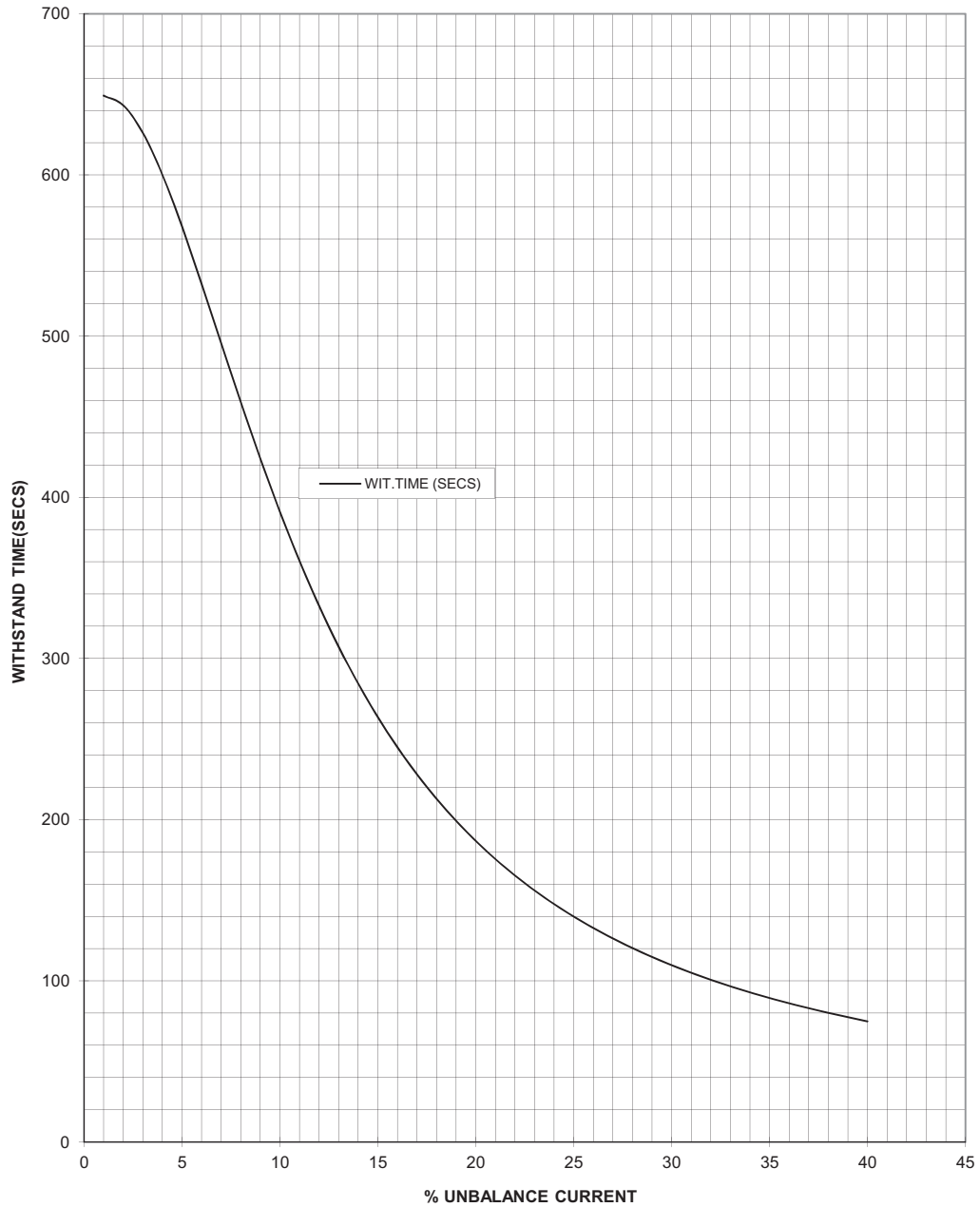
3 PERFORMANCE CURVES ARE DOR DOL OPERATION ONLY.

2		WDG NO		Prepared By	SSG	11/25/2019
1		GAD NO		Checked By	SNG	11/25/2019
		T BOX NO		SIGN		DATE
NO	REVISION	SIGN	DATE	SIGN		DATE



NEGATIVE SEQUENCE CHARACTERISTICS

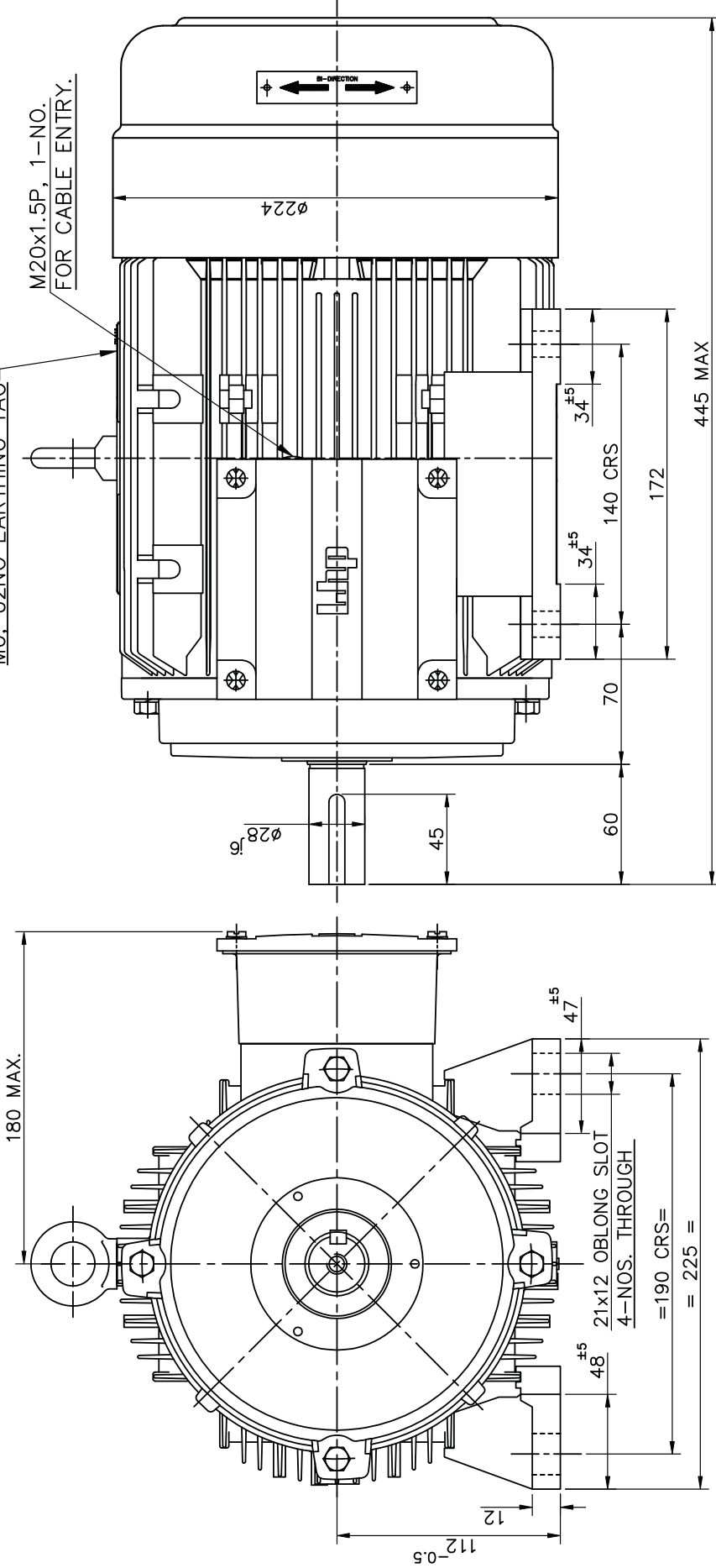
CUSTOMER : M/s ADVANCE VENTILATION
WORKS ORDER NO. : **SAP NO:**
kW : 2.2 **POLE** : 6 **VOLTS** : 415 **QTY** : 1



2		PREP	SSG	11/25/2019
1		APPD	SNG	11/25/2019
NO	REVISION	SIGN/DATE		SIGN DATE

M6. 02NO EARTHING TAG

M20x1.5P, 1-NO.
FOR CABLE ENTRY.



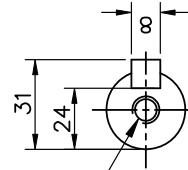
SPECIFICATION:-

KW / HP.	2.2/3
POLE	6
BEARING DE SIDE	6306 ZZ
BEARING NDE SIDE	6306 ZZ

MATERIAL OF CONSTRUCTION:-

FRAME	ALUMINIUM
END COVER (DE)	ALUMINIUM
END COVER (NDE)	ALUMINIUM
T. BOX	ALUMINIUM
T. BOX COVER	ALUMINIUM
SHAFT	CARBON STEEL

M10x22 DEEP.



SHAFT END DETAILS

PROD. CODE:- EC0125

UNMENTIONED DIMS. ARE AS PER IS 2768-1	OVER & UP TO	0.5-3	3-6	6-30	30-100	100-400	400-1000	1000-2000	NAME	DATE.
LINEAR DIMS.	TOLERANCE	±0.2	±0.3	±0.5	±0.8	±1.2	±2	±3		
ANGULAR DIMS.	TOLERANCE	±1°	±1°	±0'30"	±0'20"	±0'10"	±0'10"	±0'5'	DGN.	
									DRN.	VALSANGE 15.03.19
									CHD.	15.03.19
									APPD.	15.03.19
									SCALE	1:1

TITLE
GENERAL ARRANGEMENT. DRG. FOR
112M FRAME FOOT MOUNTED MOTOR

Laxmi Hydraulics Pvt.Ltd.
SOLAPUR
Website : www.lhb.co.in

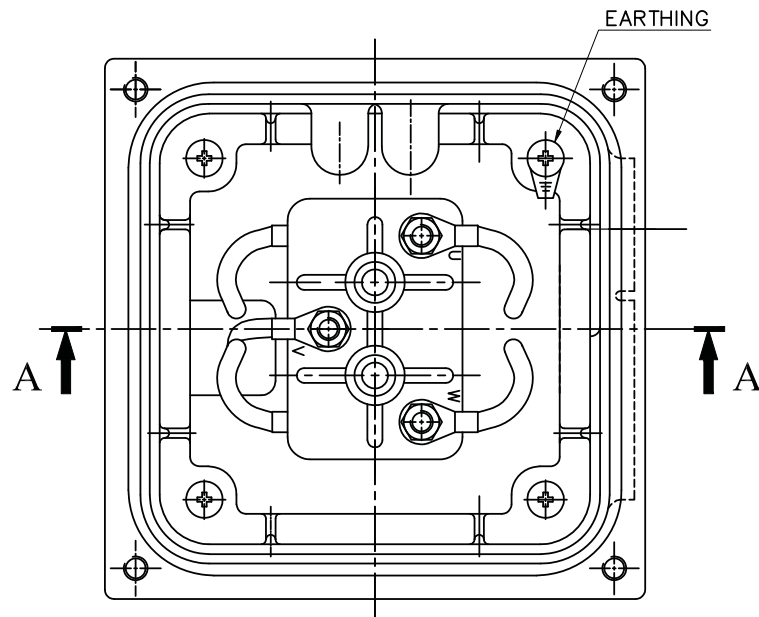
DRG. NO.
MGAN112A0246
ISSUE NO. 01 REV.NO. 00

01	DDR N/P SHOWN ON FAN COVER	09.08.19	SSV
REV. NO.	DETAIL OF CHANGE	DATE.	INTL.

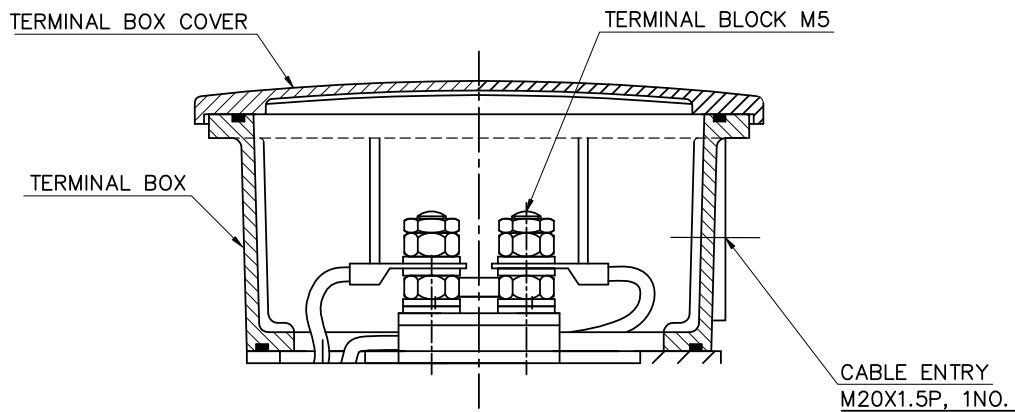
UNLESS OTHERWISE SPECIFIED ALL DIMS. ARE IN MM. DO NOT SCALE THE DRAWING.

LAXMI HYDRAULICS PVT. LTD, SOLAPUR

TERMINAL BOX ARRANGEMENT OF 112 FRAME MOTOR



TOP VIEW WITHOUT COVER



ISSUE.NO.-01

REV.NO.-01

DATE- 15.03.19

DRG.NO.-MGAN112A0246

CHD.BY.-VALSANGE

CHD. BY.-

APPD.BY.-

SHEET- 2/2

1.00.00	MOTORS- TDS FOR 0.55 KW-4 POLE MOTOR		
Sr. No.	Description	Unit	Vendor Data
1.01.00	Manufacturer		Laxmi Hydraulic Private Limited, India
1.02.00	Type and frame size		IE3 SQIM & 80
1.03.00	design code no.		IS/IEC 60034-1,IS12615
1.04.00	Nos. required		Axial fan/ as per approved Layouts
1.05.00	Application		AS PER APPROVED FAN TDS
1.06.00	Specification & Codes		IS/IEC 60034
1.07.00	Capacity for		
	i) for specified climatic conditions (50 Deg C)	kW	0.55
	ii) At 40 Deg C ambient	kW	0.59
1.08.00	Location for installation		
1.09.00	Type of enclosure & ventilation		SAFE & TEFC
1.10.00	Degree of protection		IP:55
1.11.00	Type of duty		S1
1.12.00	No. of phases, frequency & voltage		3Ph,50Hz & 415V
1.13.00	Permissible variations in		
	a) Voltage	%	+/-10
	b) Frequency	%	+/-5
	c) Combined	%	10 (ABSOLUTE)
1.14.00	At rated voltage & frequency		
	a) Full load current	A	1.19
	b) Full load speed	A	1410
	c) No load current	A	0.80
1.15.00	Minimum permissible voltage during starting	V	332V (80%)
1.16.00	Maximum permissible time at minimum permissible voltage during running at full load.	Sec.	300
1.17.00	Maximum permissible time at 75% of rated voltage during running at full load.	Sec.	300
1.18.00	Whether motor stalls at 70% of rated voltage.		Shall not stall for 1 minute
1.19.00	Efficiency & power factor		
	Load (% of full load)		
	100		80.8 0.80
	50		76 0.60
	25		68 0.40
	0		- 0.16
	At start		- 0.80
	Duty Point		
1.20.00	Stator winding		
	i) Connection		STAR
	ii) Type & nos. of terminals Brought out		3.00
	iii) Resistance between terminals at 20°C		32.46
	iv) Resistance per phase at 20°C		16.23
	v) Inductance per phase		0.030
	vi) Capacitance per phase		NA
1.21.00	Starting current as % of full load current		
	i) With IS tolerance	%	600
	ii) Without IS tolerance	%	720
1.22.00	Torque at full load	kgm	0.38
1.23.00	Break away torque in % of full load torque	%	200
1.24.00	Pull up torque in % of full load torque	%	180
1.25.00	Pull out torque in % of full load torque	%	250
1.26.00	Starting time in sec. Without mechanism coupled or Mechanism coupled through hydraulic coupling when it may be presumed that load is transferred to motor shaft only after attaining almost full speed.		
	i) with rated voltage	Sec.	2
	ii) with 80% of rated voltage	Sec.	3
	iii) with 110% of rated voltage	Sec.	2
1.27.00	Starting time in sec. With mechanism coupled through Flexible coupling.		
	i) with rated voltage	Sec.	3
	ii) with 80% of rated voltage	Sec.	5
	iii) with 110% of rated voltage	Sec.	2
1.28.00	Safe stall time (hot motor)		
	i) At rated voltage	Sec.	10
	ii) At 80% of rated voltage	Sec.	16
	iii) At 110% of rated voltage	Sec.	8
1.29.00	Safe stall time (Cold motor)		
	i) At rated voltage	Sec.	20
	ii) At 80% of rated voltage	Sec.	31
	iii) At 110% of rated voltage	Sec.	17
1.30.00	Limiting motor temperature to determine safe stall time	Deg. C	185
1.31.00	Permissible maximum accelerating time (hot motor)		
	i) At rated voltage	Sec.	3
	ii) At 80% of rated voltage	Sec.	5
	iii) At 110% of rated voltage	Sec.	2
1.32.00	Permissible maximum accelerating time (cold motor)		
	i) At rated voltage	Sec.	4
	ii) At 80% of rated voltage	Sec.	6
	iii) At 110% of rated voltage	Sec.	3

1.33.00	Insulation		
	i) Class of insulation		F
	ii) Material & treatment of insulation		VPI
1.34.00	Whether insulation is suitable for 415 V, 6.6KV, ungrounded system		Suitable for 415V
1.35.00	Temperature rise under normal conditions over 50 deg C ambient temperature		
	i) By resistance method		70
	Degree centigrade over cooling water temp. for CACW motors.	Deg. C	NA
	Degree centigrade over cooling air temp. for CACA motor.	Deg. C	
	ii) By Thermometer method		NA
	Degree centigrade over cooling water temp. for CACW motor.	Deg. C	
	Degree centigrade over cooling air temp. for CACA motor.	Deg. C	
1.36.00	Method of starting		DOL
1.37.00.	Permissible starting duty cycles		2 HOT 3 COLD
1.38.00.	Stator thermal time constant		42/125
1.39.00	Maximum permissible voltage During high speed bus transfer & special design feature.		150%
1.40.00	Time required for voltage to decay down to when driving voltage is removed.		
	i) At 50% of rated voltage	Sec.	0.01
	ii) At 40% of rated voltage	Sec.	0.02
	iii) At 25% of rated voltage	Sec.	0.03
	iv) At 0% of rated voltage	Sec.	1
1.41.00	Method of cooling		TEFC
1.41.01	Details of water cooling system		NA
	i) No. of cooler		NA
	ii) Water requirement per cooler		NA
	iii) Losses removed by cooler		NA
	iv) Max. permissible temperature Of cooling water at inlet		NA
	v) Max. permissible temperature Of cooling water at outlet		NA
	vi) Maximum permissible pressure At water outlet		NA
	vii) Water pressure drop through the cooler		NA
	viii) Temp. of cold air coming Out & entering the machine For permissible cooling Water temperature of 310C		NA
	ix) Temp. rise of air passing through machine at full load.		NA
	x) Air pressure drop through The cooler		NA
	xi) Temp. rise of water through cooler		NA
	xii) Protection against leakage of water		NA
	xiii) Arrangement to ensure the water flow		NA
1.42.00	Bearings		
	i) Number		6204 ZZ/6204 ZZ @ DE/NDE
	ii) Type		DGBB
	iii) Lubrication system		PRELUBRICATED
	iv) Quantity of lubrican reqd. For both the bearings.		NA
	v) Life in hours at rated speed		40,000hrs
	vi) Recommended lubricant		NA
	vii) Bearing end play		1mm MAX
	viii) Inlet oil pressure		NA
	ix) Temp. rise of oil		NA
	x) Max. permissible temp. ofBearing		NA
	Xi) Max. permissible temp. of Oil		NA
	Xii) Permissible running time without forced oil at full load & full speed		NA
	xiii) Whether bearings are provided with 4 wire, platinum RTD having 100-ohm resistance at 0 Deg C for remote temp. indication.		NA
	xiv) Whether bearings are provided with local temperature indicator having two adjustable contacts rated for 2A at 240V AC or 0.2A at 220V DC.		NA
	xv) If forced lub oil system provided :		NA
	i) Qty of lubricant required for initial filling.		NA
	ii) Recommended period after which lubricant should be replaced		NA
	iii) Bearing cooling water requirement		NA
	iv) Max. permissible bearing cooling water inlet temp. (permissible)		NA
	v) Max. permissible bearing cooling water outlet temp.		NA
1.43.00.	Terminal designation correspond to direction of rotation (Facing driving end).		BIDIRECTIONAL MOTOR
1.44.00	Terminal boxes with accessories separate terminal boxes provided.		
	i) Main		1 NO
	ii) Space heaters		NO
	iii) Winding temp. detectors		NO
	iv) Bearing temp. detectors		NO
	v) Moisture detectors		NO
	vi) Neutral terminals		NO
1.45.00	Main terminal box details		
	i) Type & Nos.		IP:55 & 1Nos
	ii) Fault level permissible for 0.25 sec.	kA	50
	iii) Location		LHS FROM NDE
	iv) Cable gland size & no.		M20 x 1.5 P , 1 NO
	v) Direction of cable entry.		FROM NDE
	vi) Gland plate material and thickness		CI /AL & 6mm MINIMUM

1.46.00.	Space Heater		
	i) Number		NA
	ii) Location		NA
	iii) Capacity of each		NA
	iv) Total power requirement	kW	NA
	v) Voltage.	V	NA
	vi) Gland plate material and thickness		NA
1.47.00.	Details of 4 wire platinum RTD having 100 ohm resistance at 0 Deg C for winding temp. detector.		NA
	i) Nos. provided		NA
	ii) Location		NA
1.48.00	Whether CTs for differential protection are provided		NA
	i) If Yes, no. of CTs supplied alongwith motors.C.T. details		NA
	a) C.T. ratio		NA
	b) Knee point voltage		NA
	ii) S.C. withstand capacity		NA
1.49.00	Type of mounting		B3
1.50.00	Shaft orientation		HORIZONTAL
1.51.00	Shaft extension		AS PER GAD MGAN080A0157
1.52.00	Grounding pads size nos. & location		1 XM5
1.53.00	Method of coupling to driven mechanism		
1.54.00	Motor GD2		0.001
1.55.00	Lifting device		EYE BOLT
1.56.00	Weight		
	i) Weight of stator (wound)	kg	7 APPROX
	ii) Weight of rotor (wound)	kg	5 APPROX
	iii) Weight of base plate	kg	NA
	iv) Weight of cooler	kg	NA
	v) Net weight of motor	kg	Approx. 12 Kg
1.57.00	Shipping dimensions & weight		230x250x250 & 13 kg
1.58.00	Thermometer provided		NO
	i) In cold air path		NO
	ii) In hot air path		NO
	iii) For measurement of oil temp.		NO
1.59.00	Characteristic curves furnished		
	i) Speed vs. current at rated voltage (Yes / No)		Enclosed
	ii) Speed vs. torque at 110%, 100%, 90% and 80% of rated voltage (Yes / No)		Enclosed
	iii) Thermal withstand curve for hot & cold conditions. (Yes / No)		Enclosed
	iv) Efficiency vs. load (Yes / No)		Enclosed
	v) P.F. Vs. load (Yes / No)		Enclosed
	vi) Current vs. time (Yes / No)		Enclosed
	vii) Negative phase sequence curve (Yes / No)		Enclosed
1.60.00	Drawings furnished		
	i) General arrangement of motor (Yes / No)		YES
	ii) Main terminal box showing the method of terminating the incoming cables (Yes / No)		YES
	iii) Instruction manuals (Yes / No)		YES
	iv) Name Plate drawing (Yes/No)		NO
1.61.00	Rotor design as per specification		IS 648
1.62.00	Noise Level	dB	85 dB at 1 m
1.63.00	Vibration Pad (Yes / No)		NO
1.64.00	Drain Hole (two numbers with plug, one on either end of motor at bottom most point. (Yes / No)		NO
1.65.00	Painting shade		692 OF IS-5
1.66.00	Earthing		
	i) Body (Number & Size)		1 X M6
	ii) Terminal Box (Number & Size)		1 X M6

MKTG Ref No.:

D7PO1907021

LAXMI HYDRAULICS PVT LTD., B-11- MIDC CHINCHOLI , SOLAPUR.



SPEED VS TORQUE & CURRENT CHARACTERISTICS

CUSTOMER : M/s ADVANCE VENTILATION

INDENT NO. :

PO NO:

PO DATE:



PROJECT NAME :

kW : 0.55 POLE :

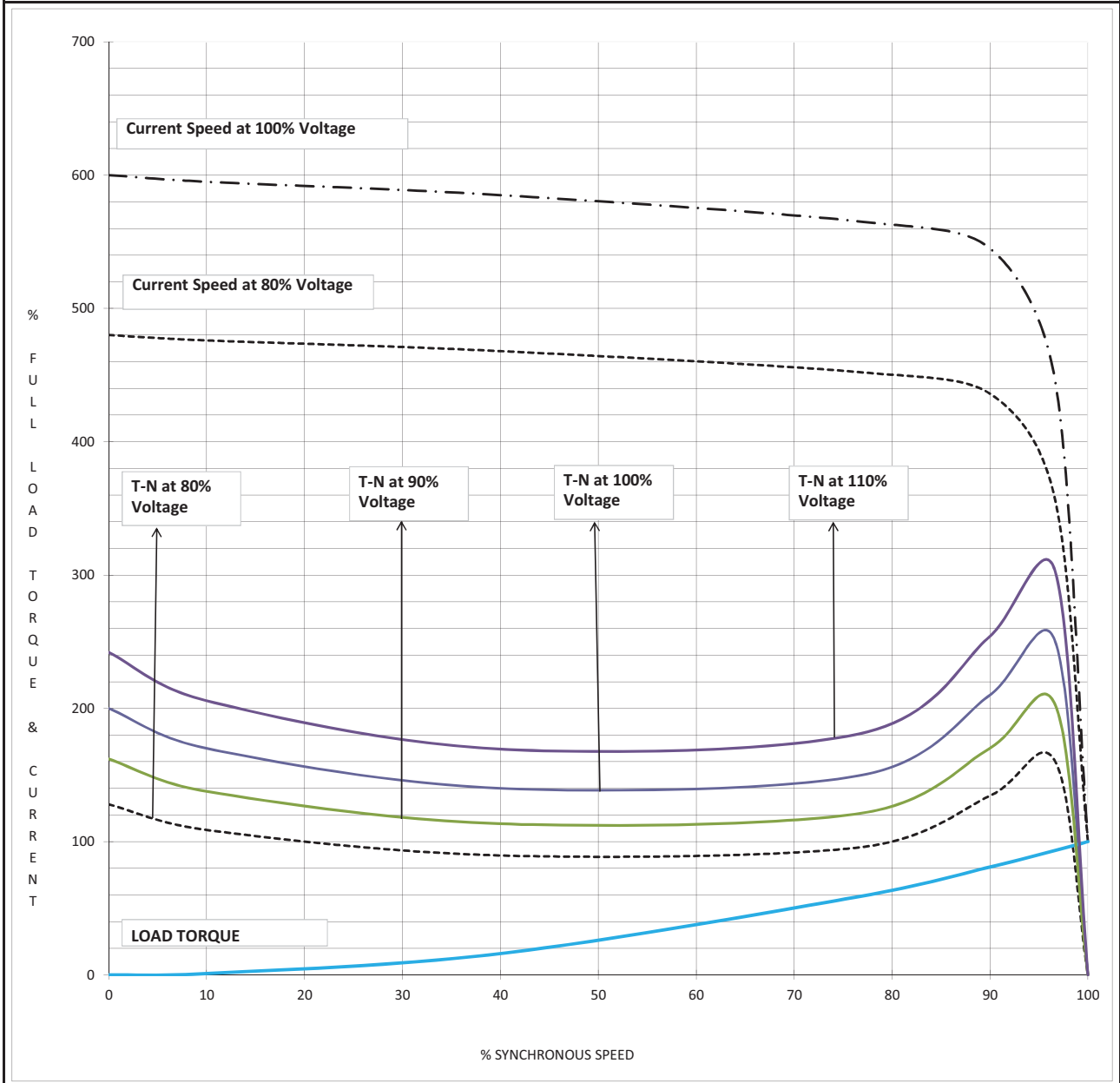
4

VOLTS :

415

QTY :

1



NOTE 1 ALL PERFORMANCE FIGURES ARE SUBJECT TO IS/IEC 60034-1 TOLERANCES,PARAMETERS MAY CHANGE DURING FINAL SUBMISSION OF DATASHEET AFTER GETTING THE ORDER.

2 STARTING CURRENT MEASUREMENT AS PER IS 12615 : 2018 CLAUSE NO 16.2.2.3.1,

3 PERFORMANCE CURVES ARE DOR DOL OPERATION ONLY.

			WDG NO			Prepared By	SSG	8/31/2019
2			GAD NO			Checked By	SNG	8/31/2019
1			T BOX NO					
NO	REVISION	SIGN	DATE			SIGN		DATE

MKTG Ref No.:

D7PO1907021

LAXMI HYDRAULICS PVT LTD. , B-11- MIDC CHINCHOLI , SOLAPUR.



LOAD VS EFF. & P.F.

CUSTOMER : M/s ADVANCE VENTILATION

INDENT NO. :

PO NO:

PO DATE:



IE3

PROJECT NAME :

kW : 0.55 POLE :

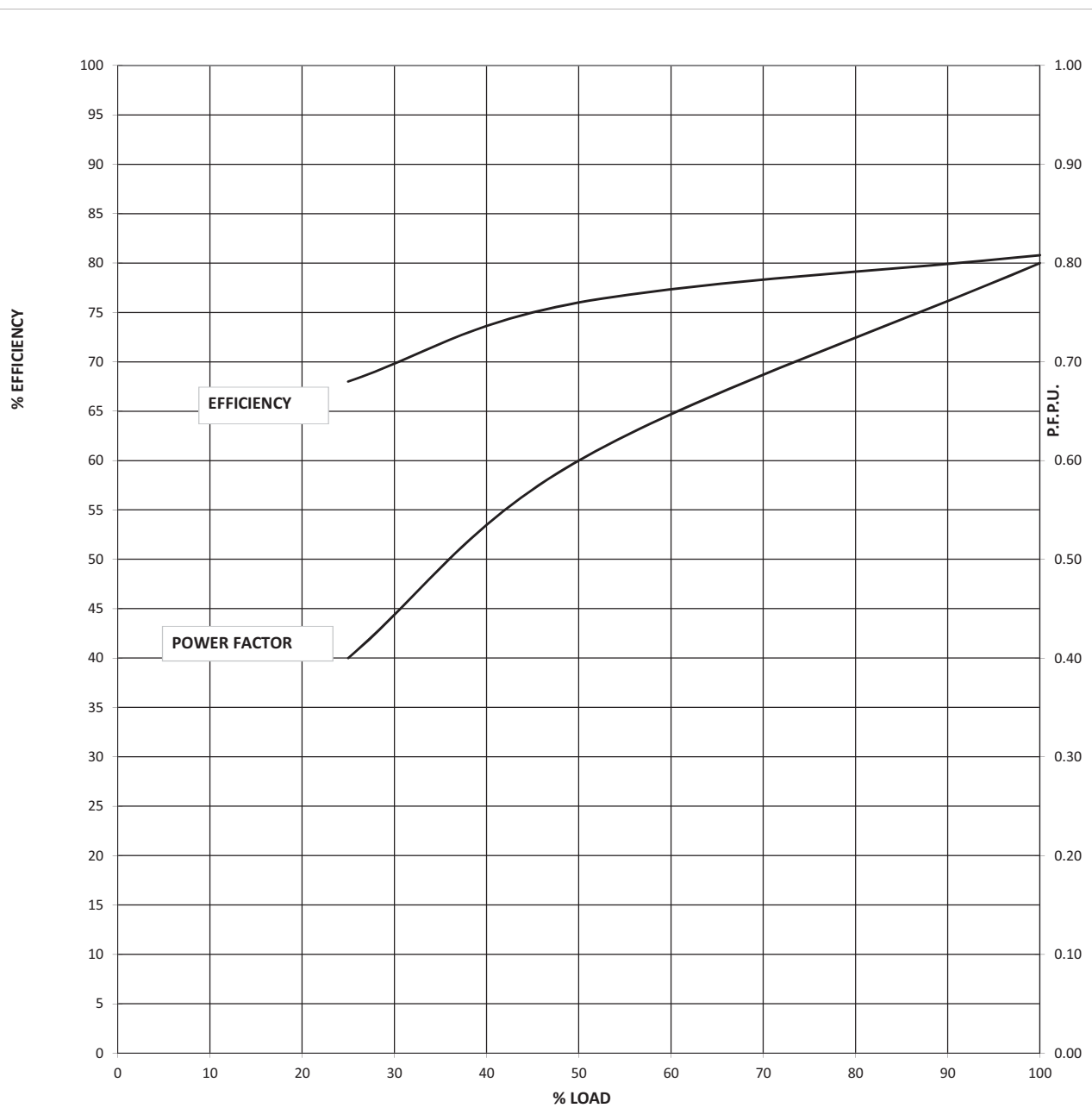
4

VOLTS :

415

QTY :

1



NOTE 1 ALL PERFORMANCE FIGURES ARE SUBJECT TO IS/IEC 60034-1 TOLERANCES,PARAMETERS MAY CHANGE DURING FINAL SUBMISSION OF DATASHEET AFTER GETTING THE ORDER.

2 STARTING CURRENT MEASUREMENT AS PER IS 12615 : 2018 CLAUSE NO 16.2.2.3.1,

3 PERFORMANCE CURVES ARE DOR DOL OPERATION ONLY.

NO	REVISION	SIGN	DATE	WGD NO	GAD NO	T BOX NO	Prepared By	SSG	8/31/2019
2							Checked By	SNG	8/31/2019
1							SIGN		DATE

MKTG Ref No.:

D7PO1907021

LAXMI HYDRAULICS PVT LTD. , B-11- MIDC CHINCHOLI , SOLAPUR.



STARTING CURRENT VS STARTING TIME AND THERMAL WITHSTAND TIME.

CUSTOMER : M/s ADVANCE VENTILATION

INDENT NO. :

PO NO:

PO DATE:



IE3

PROJECT NAME :

KW : 0.55 POLE :

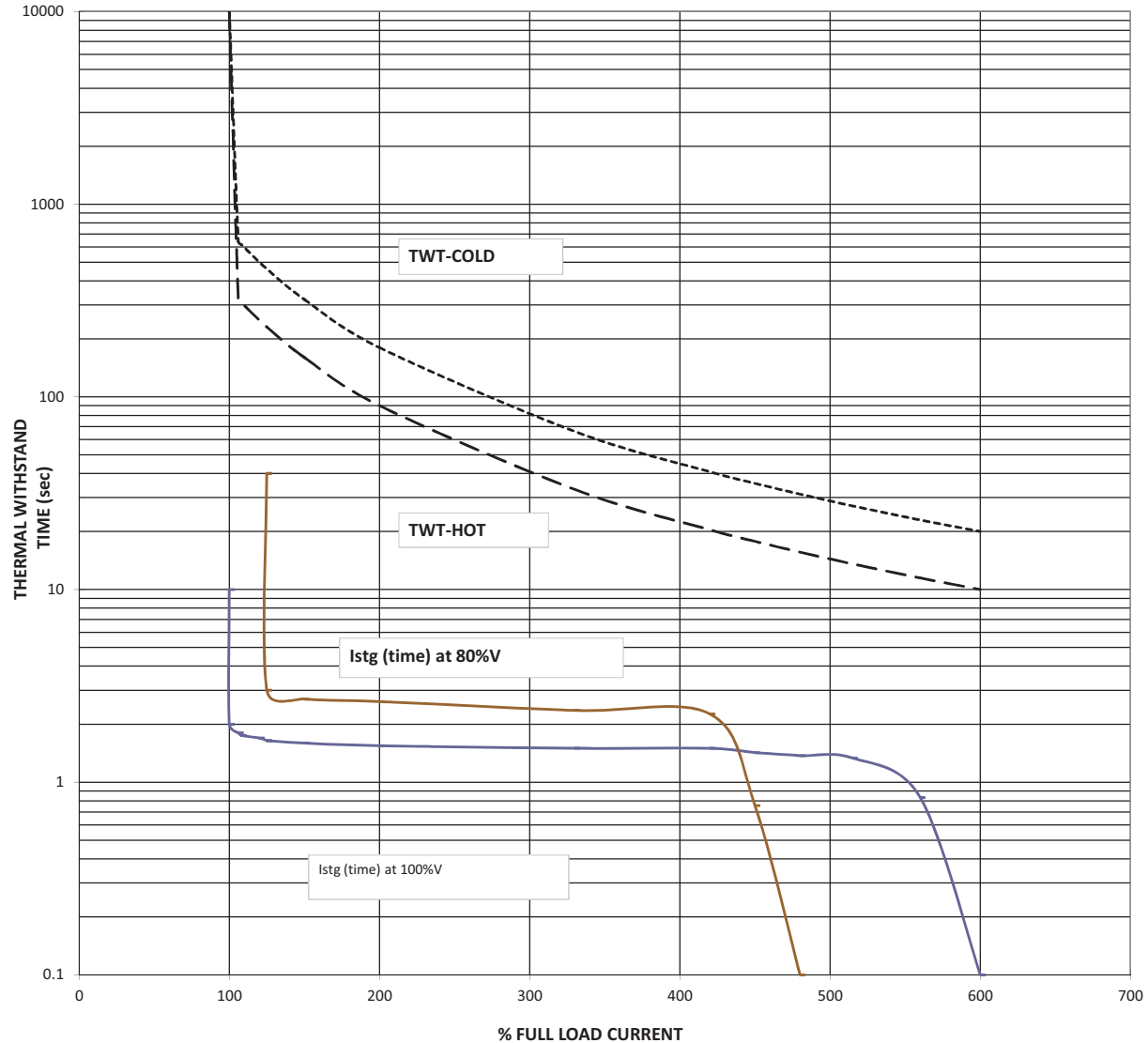
4

VOLTS :

415

QTY :

1

L. R. CURRENT at 100% voltage : **600** % OF FLA THERMAL WITHSTAND TIME(sec):Starting time at 100% voltage : **2** sec AT100% RATED VOLTAGE (HOT) : **10**Starting time at 80% voltage : **3** sec AT100% RATED VOLTAGE (COLD): **20**

NOTE 1 ALL PERFORMANCE FIGURES ARE SUBJECT TO IS/IEC 60034-1 TOLERANCES,PARAMETERS MAY CHANGE DURING FINAL SUBMISSION OF DATASHEET AFTER GETTING THE ORDER.

2 STARTING CURRENT MEASUREMENT AS PER IS 12615 : 2018 CLAUSE NO 16.2.2.3.1,

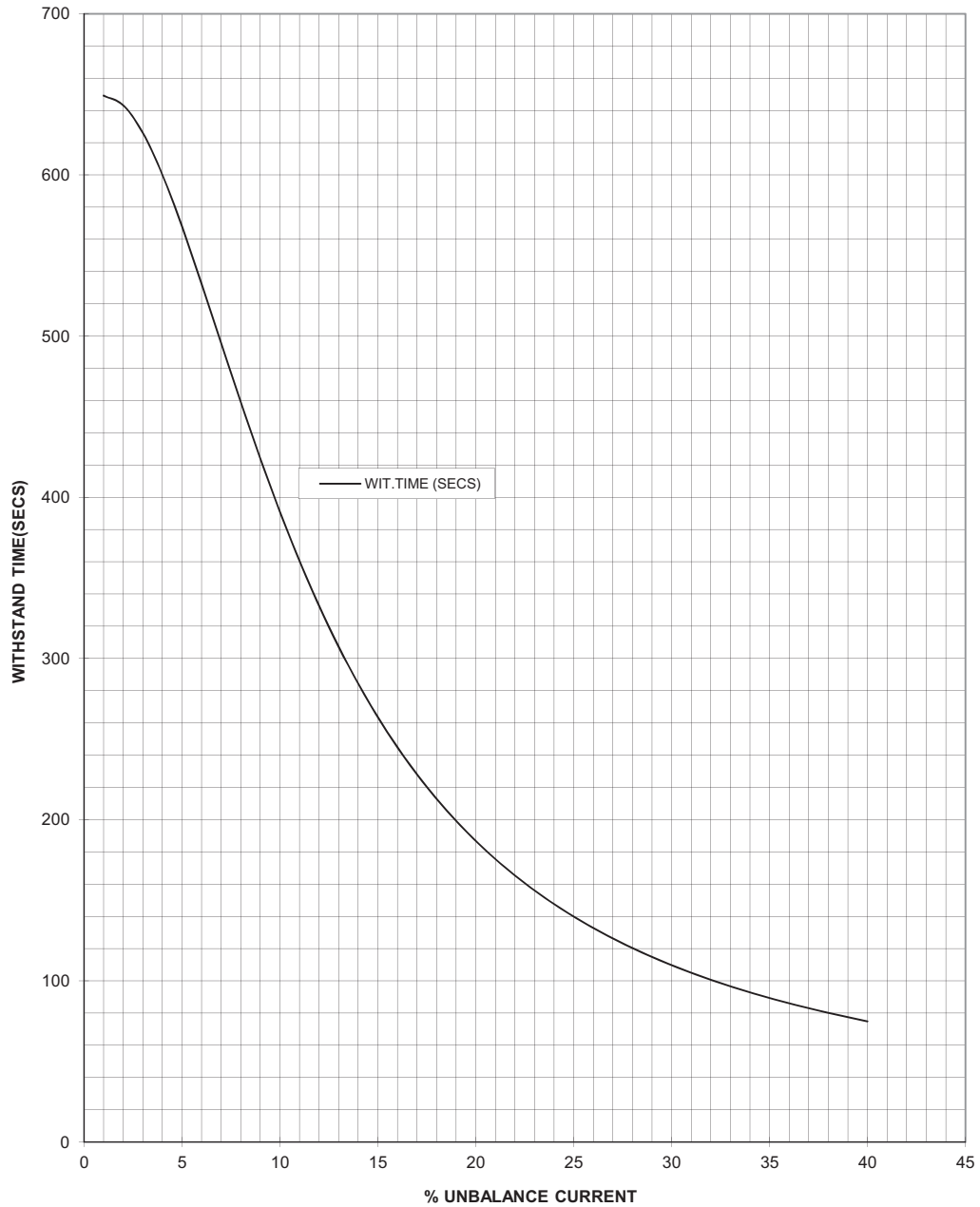
3 PERFORMANCE CURVES ARE DOR DOL OPERATION ONLY.

2		WDG NO		Prepared By	SSG	8/31/2019
1		GAD NO		Checked By	SNG	8/31/2019
		T BOX NO		SIGN		DATE
NO	REVISION	SIGN	DATE	SIGN		DATE

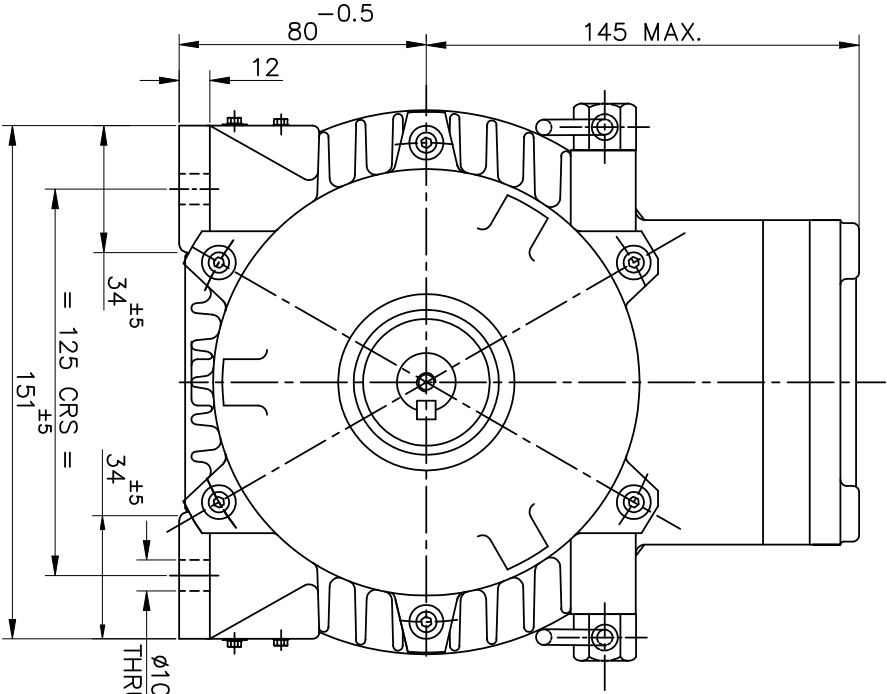


NEGATIVE SEQUENCE CHARACTERISTICS

CUSTOMER : M/s ADVANCE VENTILATION
 WORKS ORDER NO. : SAP NO:
 kW : 0.55 POLE : 4 VOLTS : 415 QTY : 1



2		PREP	SSG	8/27/2019	
1		APPD	SNG	8/27/2019	
NO	REVISION	SIGN/DATE		SIGN	DATE

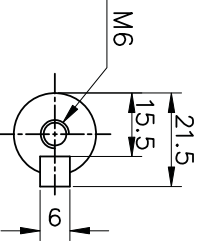
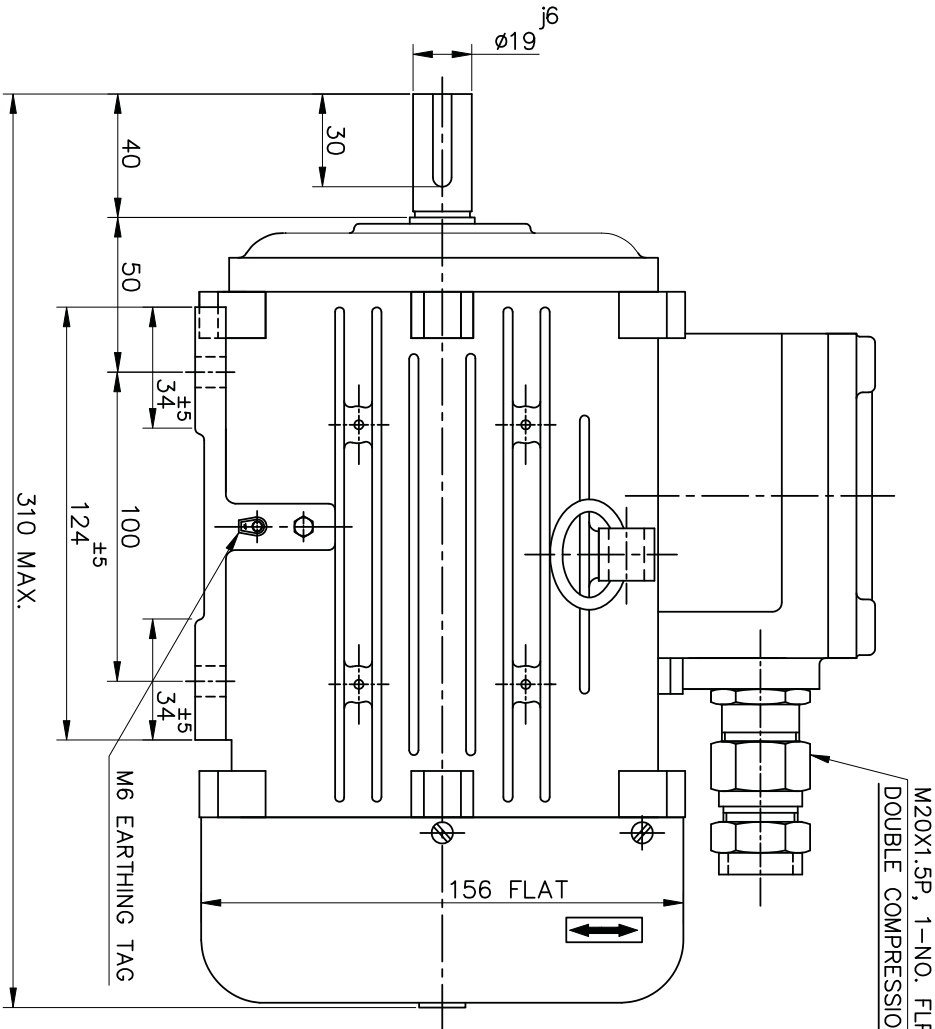


SPECIFICATION:-

RATING	0.55KW/0.75HP
POLE	4 POLE
BEARING DE	6204 ZZ
BEARING NDE	6204 ZZ

MATERIAL OF CONSTRUCTION:-

FRAME	CAST IRON
END COVER (DE)	CAST IRON
END COVER (NDE)	CAST IRON
T. BOX COVER	CAST IRON
SHAFT	CARBON STEEL



SHAFT END DETAILS

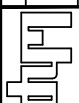
REV. NO.	1	DETAIL OF CHANGE	DATE	INTL.
----------	---	------------------	------	-------

UNMENTIONED TOLERANCES ARE AS PER ISO 2768-1/1	LINEAR DIMMS.	OVER & UP TO TOLERANCE	0.5-3	3-6	6-30	30-120	120-400	400-1000	1000-2000
	ANGULAR DIMMS. <td>PERMISSIBLE DEVIATIONS FOR LENGTHS OF THE SHORTER SIDE OF THE ANGLE. <td>±0.2</td> <td>±0.3</td> <td>±0.5</td> <td>±0.8</td> <td>±1.2</td> <td>±2</td> <td>±3</td> </td>	PERMISSIBLE DEVIATIONS FOR LENGTHS OF THE SHORTER SIDE OF THE ANGLE. <td>±0.2</td> <td>±0.3</td> <td>±0.5</td> <td>±0.8</td> <td>±1.2</td> <td>±2</td> <td>±3</td>	±0.2	±0.3	±0.5	±0.8	±1.2	±2	±3
		<td>0-10</td> <td>10-50</td> <td>50-120</td> <td>120-400</td> <td>400-1000</td> <td>1000-2000</td> <td></td>	0-10	10-50	50-120	120-400	400-1000	1000-2000	
		<td>±1°</td> <td>±0.30°</td> <td>±0.20°</td> <td>±0.10°</td> <td>±0.05°</td> <td></td> <td></td>	±1°	±0.30°	±0.20°	±0.10°	±0.05°		

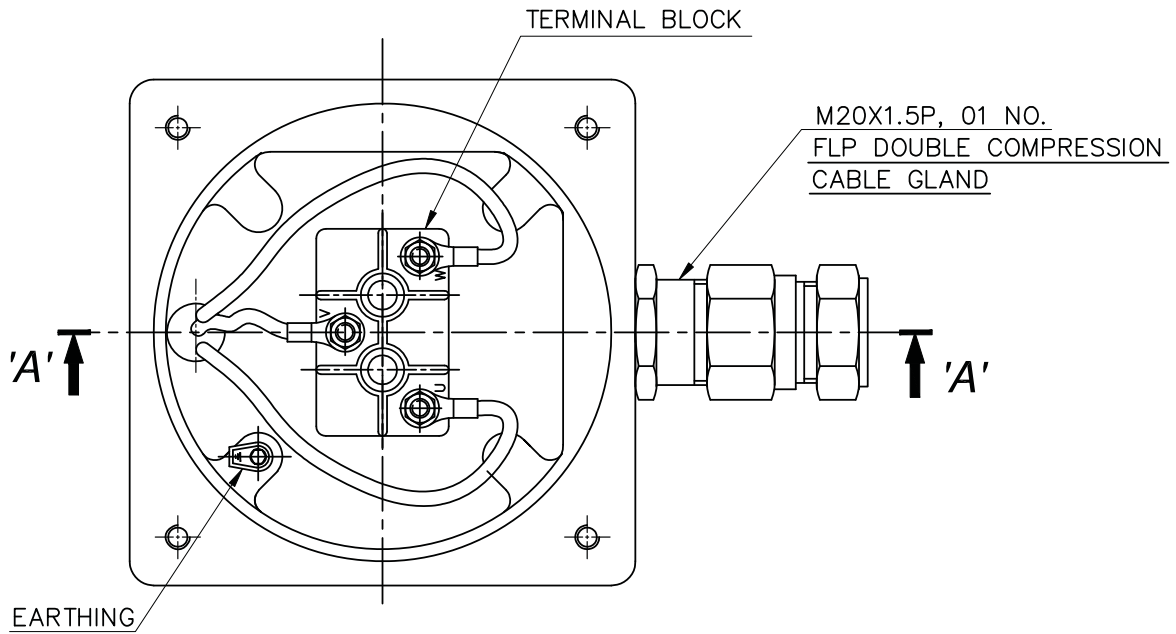
TITLE GENERAL ARRANGEMENT DRG. FOR

LF 80 FRAME FOOT MOUNTED FLP MOTOR

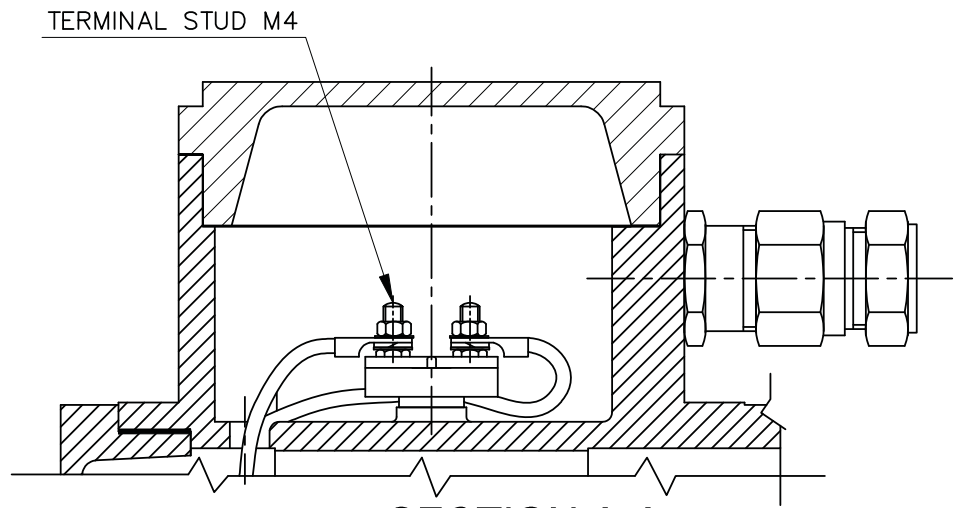
FOR GAS GROUP - IIC


Laxmi Hydraulics Pvt. Ltd. SOLAPUR
 Website : www.lhp.co.in
 UNLESS OTHERWISE SPECIFIED ALL DIMMS. ARE IN MM. DO NOT SCALE THE DRAWING.

PROD. CODE - LFN676	NAME:	DATE:
SCALE: --:1:1	DRN. POTDAR	11.08.19
SHEET: - 01 OF 02	CHD.	11.08.19
	APPD. GRM	11.08.19
	DRG. NO.	
	MGAF080A0142	
	ISSUE NO. 01	REV. NO. 00



TOP VIEW WITHOUT COVER



SECTION A-A

\\Ppk\d\lhl DRAWING FILES\DRGS\3\G.A.DWG\MGAF\080\B3\MGAF080A0142.dwg

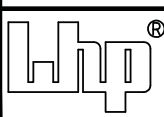
2			
1			
REV. NO.	DETAIL OF CHANGE	DATE.	INTL.

DRG. REVIEW POINTS	
Standardisation	
Geometrical Reqmnts.	
Surface Finish	
Sectional Views/ Arrows.	
Material Grade	
Process. Reqmnts.	
Gauging Reqmnts.	
Drq.No./ Rev.No./ Issue No.	
Signature	

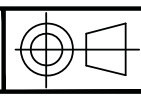
UNMENTIONED TOLERANCES ARE AS PER IS:2102-1/ ISO 2768-1	LINEAR DIMNS.	OVER & UPTO	0.5-3	3-6	6-30	30-120	120-400	400-1000	1000-2000
		TOLERANCE	±0.2	±0.3	±0.5	±0.8	±1.2	±2	±3
	ANGULAR DIMNS.	PERMISSIBLE DEVIATIONS FOR LENGTHS OF THE SHORTER SIDE OF THE ANGLE.							
		OVER & UPTO	0-10	10-50	50-120	120-400	400.....		
	TOLERANCE	±1°	±0°30'	±0°20'	±0°10'	±0°5'			

	NAME.	DATE.
DGN.		
DRN.	POTDAR	11.08.19
CHD.		11.08.19
APPD.	GRM	11.08.19
SCALE :- 1:1		
SHEET:- 02 OF 02		

TITLE TERMINAL BOX ARRANGEMENT DRG. FOR LFN-80 FRAME FOOT MOUNTED FLP MOTOR (IIC)



Laxmi Hydraulics Pvt.Ltd.
 Website : www.lhp.co.in SOLAPUR



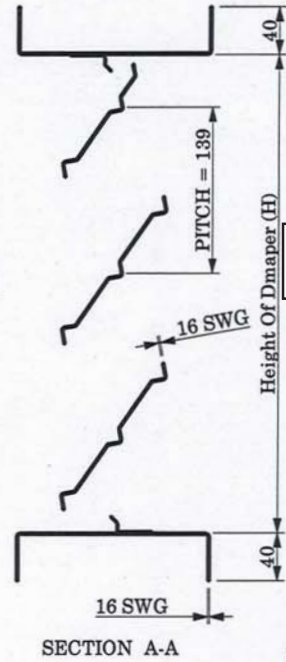
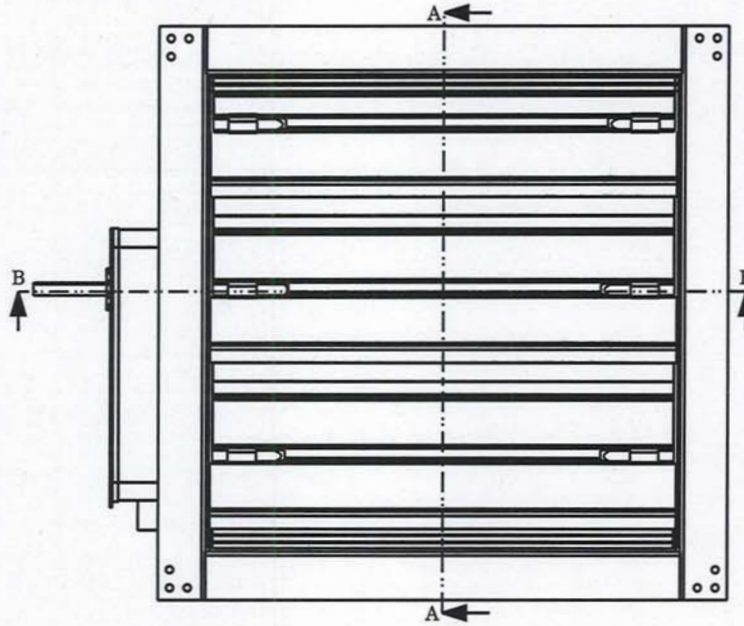
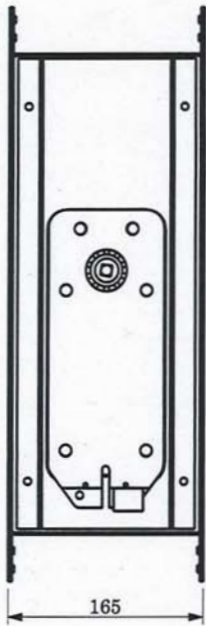
DRG. NO. **MGAF080A0142**

UNLESS OTHERWISE SPECIFIED ALL DIMNS. ARE IN MM. DO NOT SCALE THE DRAWING.

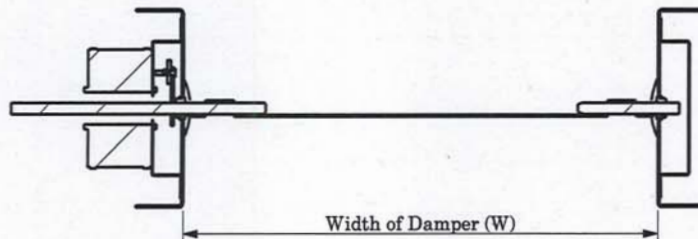
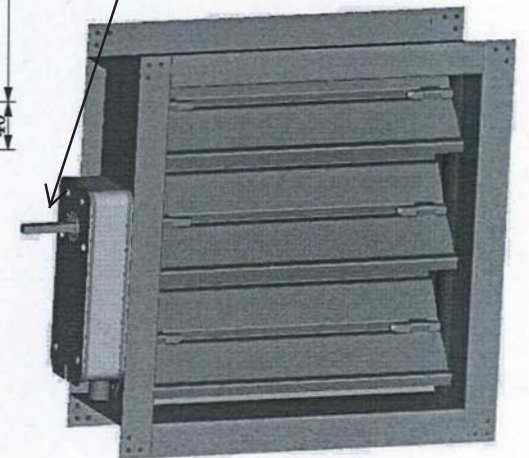
ISSUE NO. 01 | REV.NO. 00

UNLESS OTHERWISE SPECIFIED ALL DIMENSION ARE IN m.m.

REV NO.	DATE	REVISION	REV. BY



Electric actuated Link



SECTION B-B



THIS DRAWING AND DESIGN IS A PROPERTY OF SYSTEMAIR INDIA PVT. LTD. IS CONFIDENTIAL INFORMATION. SUBJECT TO THEIR RECALL. THE DOCUMENT MUST NOT BE COPIED WITHOUT THEIR WRITTEN PERMISSION. CONTRAVENTION WILL BE PROSECUTED.

TOLERANCE LIMIT UNLESS SPECIFIED	
0.5 - 6 = ±0.3	> 120 - 400 = ±2.0
> 6 - 30 = ±0.5	> 400 - 1000 = ±3.0
> 30 - 120 = ±0.8	> 1000 - 2000 = ±4.0

MASS PROPERTIES:	
VOLUME (mm ³)	-
WEIGHT (kg)	-
No. of SC/CC	
SC	-
CC	0

PART DESCRIPTION:				REMOVE SHARP EDGES	DRAWING No.:	REV NO.:
WGD - WITHOUT SLEEVE - MOTORIZED				DATE: 13-Nov-2018	SIPL/ADP/GA/2604	00
MATERIAL:	M. STANDARD:	SCALE:	DRN. BY:	AMIR	CHKD. BY:	DALIP
-	-	N.T.S.	-	-	APPD. BY:	ABHARDWAL
systemair				SYSTEMAIR INDIA PVT.LTD.		

FILE PATH: Y:\Plants\Greater Noida\CAD_Team\Amir_Ansari\2_ADPGA DRAWINGS\WGD-WITHOUT SLEEVE-MOTORIZED

