	BHARAT HEAVY ELECTRICALS LIMITED (A GOVT OF INDIA UNDERTAKING)	Flue Gas Desulphurization Group-FGD, Boiler Auxiliary Plant (BAP), Ranipet
---	--	---

TECHNICAL SPECIFICATION FOR GLASS FLAKE LINING OF SLURRY TANKS


SPECIFICATION NO : FGD:GFL-TNKS
BUYER (EPC) : BHEL, BAP Ranipet
APPLICATION : WET LIMESTONE FGD

02	08-10-2021	Generally Revised	<i>Jyotish Kumar Patel</i> Jyotish Kumar Patel	<i>S. Shanmuga Sundaram</i> Shanmuga Sundaram S	<i>V. Kesavan</i> V. Kesavan
01	18-09-2021	Generally Revised	-	-	-
00	31-03-2020	Fresh Release	Jyotish Kumar Patel	Shanmuga Sundaram S	V. Kesavan
REV	Date	Description	Prepared	Checked	Approved

This document is meant for the exclusive purpose of bidding against this specification and shall not be transferred, reproduced or otherwise used for purposes other than that for which it is specifically issued.

	TECHNICAL SPECIFICATION FOR GLASS FLAKE LINING OF SLURRY TANKS	REF: FGD:GFL-TNKS
		REV. No. 02

SNO.	CONTENTS
A	DOCUMENTS TO BE SUBMITTED ALONG WITH OFFER
B	DOCUMENTS TO BE SUBMITTED AFTER AWARD OF CONTRACT
1	INTENT OF SPECIFICATION
2	CODES AND STANDARDS
3	QUALIFICATION REQUIREMENTS
4	SCOPE OF SUPPLY
5	ATMOSPHERIC CONDITION REQUIREMENTS
6	PRELIMINARY CHECK REQUIREMENTS
7	SURFACE PREPARATION
8	COATING APPLICATION
9	INSPECTION AND TESTING OF GLASS FLAKE LINING
10	REPAIRING PROCEDURE FOR GLASS FLAKE COATING
11	PERFORMANCE GUARANTEE
12	PACKING

	TECHNICAL SPECIFICATION FOR GLASS FLAKE LINING OF SLURRY TANKS	REF: FGD:GFL-TNKS
		REV. No. 02

A) DOCUMENTS TO BE SUBMITTED ALONG WITH OFFER

Sl. No.	Description	Purpose
1	Performance certificate from end user for meeting the qualification requirement	Qualification requirement for considering the offer
2	Reference list / experience list as per Annexure-III	Qualification requirement for considering the offer
3	All pages of specification and all filled annexures duly signed & sealed	Technical evaluation
4	Write-up on technical features of glass flake lining offered for primer and build up coats along with Catalogues, Resin composition, drawings ,etc.	Technical evaluation
5	Data sheets of the Glass flake lining material.	Technical evaluation
6	Surface preparation, erection sequence/Procedure of the Glass flake lining. Detailed flow chart from start to finish of the lining to be furnished.	Technical evaluation
7	Storage methods to be followed at site and the shelf life of glass flake	Technical evaluation
8	Man days required to complete the Glass flake lining for each area is to be spelt from start to finish	Technical evaluation
9	Vendor should clearly indicate the price (for both material and application)of Glass Flake lining per square meter	Commercial evaluation
10	Priced offer	Commercial evaluation

	TECHNICAL SPECIFICATION FOR GLASS FLAKE LINING OF SLURRY TANKS	REF: FGD:GFL-TNKS
		REV. No. 02

B) DOCUMENTS TO BE SUBMITTED AFTER AWARD OF CONTRACT

Sl. No.	Description	Purpose	Delivery Time
1	List of datasheets/documents to be submitted for review, approval and information with submission dates	CUSTOMER/BHEL approval to start manufacturing	1 week
2	Catalogue/Datasheets for the Vinyl ester based Glass Flake Lining material	CUSTOMER/BHEL approval to start manufacturing	2 week
3	Detailed dimensional drawing of the lining surfaces indicating the design data and information about the material, scope of work and weight of the material supply, Packing procedure etc	CUSTOMER/BHEL approval to start manufacturing	2 week
4	Surface preparation and Lining procedures	CUSTOMER/BHEL approval to start manufacturing	2 week
5	Manufacturing Quality Assurance Plan for Glass flake material and adhesive to be submitted for approval.	CUSTOMER/BHEL approval to start manufacturing	2 week
6	Field quality plan for surface preparation and lining application procedure along with testing	CUSTOMER/BHEL approval to start manufacturing	2 week
7	Repair and rectification procedure for Glass Flake lining	CUSTOMER/BHEL approval to start manufacturing	2 week

	TECHNICAL SPECIFICATION FOR GLASS FLAKE LINING OF SLURRY TANKS	REF: FGD:GFL-TNKS
		REV. No. 02

1. INTENT OF SPECIFICATION

- a) This Specification defines the minimum requirements of glass flake lining of Slurry Tanks in the Flue Gas Desulphurization (FGD) plant for NTPC Projects.
- b) Tanks/Sumps to be lined contain Limestone Slurry/Gypsum Slurry/Process water. Slurry Tank Details and Slurry conditions are given in Annexure-Tank Details. The glass flake lining shall offer better resistance to corrosion/erosion and shall be based on Vinyl ester resin. Thickness of glass flake lining required is 3 mm thk .
- c) This specification covers the general design, selection of suitable glass flake material/resin, manufacture, shop inspection (As per latest applicable statutes, regulation and safety codes in the locality where the lining are to be carried out) and delivery at site, surface preparation of lining surface, lining the surface to the satisfaction of the customer, jointly calculation of total area lined, inspection of the lining at site, handling over to the ultimate customer.
- d) Compliance to this specification shall not relieve the vendor of the responsibility of furnishing glass flake lining materials of proper design, materials and workmanship to meet the specified requirements.
- e) In case of deviation, it shall be listed in the vendor's proposal under separate section titled as "list of deviations/exceptions" to the enquiry documents. Any deviation not mentioned in this list, but mentioned elsewhere in the proposal will not be considered.

2.0 CODES AND STANDARDS:

The glass flake lining shall conform to the latest version of Indian/British/American/International Standards. Nothing in this specification shall construe to relieve the contractor of the required statutory responsibility. The Glass Flake Lining material shall be designed for the corrosion protection of the Slurry tank. The lining shall be glass flake filled vinyl ester based coating system. Only Proven material has to be offered by the bidder

REFERENCE STANDARDS:

ASTM D 4285	Standard Test Method for Indicating Oil or Water in Compressed Air
ASTM D 4541	Standard Test Method for Pull-Off Strength of Coating Using Portable Adhesion Testers

	TECHNICAL SPECIFICATION FOR GLASS FLAKE LINING OF SLURRY TANKS	REF: FGD:GFL-TNKS
		REV. No. 02

ASTM E 337	Standard test Method for Relative Humidity by Wet and Dry Bulb Psychrometer
ASTM D 4618	Standard Specification for Design and Fabrication of Flue Gas Desulfurization System Components for Protective Lining Application
ASTM D 5162	Practice for Discontinuity (Holiday) Testing of Non-Conductive Protective Coating on Metallic Substrates
NACE Standard RP0178-2003	Fabrication Details, Surface Finish Requirements, and Proper Design Considerations for Tanks and Vessels to be lined for Immersion Service
ISO 8501-1, 1988	Preparation of Steel Substrates Before Application of Paints and Related Products - Visual Assessment of Surface Cleanliness
SSPC"PA2	Measurement of Dry Paint Thickness with Magnetic Gauges

3.0 QUALIFYING REQUIREMENTS

- (1) Glass Lining material selected should have been used in Wet Limestone based FGD application for *coal fired power plants* or similar corrosive environment for minimum 1000 sq.m for atleast one (1) project.
- (2) The lining material should have completed minimum **2 years of operation** reckoned as on/before the date of techno-commercial bid opening of the tender/enquiry.
- (3) The manufacturer should have designed, manufactured, supplied and supervised the installation of Glass lining of the referred plants.
- (4) Any Patch work/repair work will not be considered as experience/qualifying requirement unless it is done for the entire area.
- (5) Performance certificate from end user for meeting the above qualifying requirements altogether shall be provided by the bidder.

Lining material shall be supplied from such manufacturer who has got the proven material and meets the above Qualification requirements. Performance certificate from end user for meeting the above qualifying requirements altogether shall be provided by the bidder.

	TECHNICAL SPECIFICATION FOR GLASS FLAKE LINING OF SLURRY TANKS	REF: FGD:GFL-TNKS
		REV. No. 02

4.0 SCOPE OF SUPPLY

- a) Complete selection and procurement/manufacture of all materials required for lining, storage, preparation of the surfaces for lining near site and installation of lining. All equipments required for lining shall be arranged by the lining vendor. Testing and supply of glass flake lining material for the duty condition specified in Table-1.
- b) Erection and Commissioning of the glass flake lining as per the requirement. Delivery of material to site, Storage of the material, surface preparation of the surfaces to be lined, lining the surface to the satisfaction of the customer and testing the lined surface for proper adhesion, complete coverage and intactness with the base material/surface shall be under bidder's scope, cost for Erection and Commissioning shall be included in the offer. The lining shall extend through all internal surfaces and over flange faces. The lining shall cover all the baffles inside the tank.
- c) To install the linings, full scaffolding access shall be provided to reach the internal walls and the entire area. Scaffold shall be properly erected with full planking in all work areas. Scaffolding shall not contact wall surfaces in work areas during lining application and surface preparation
- d) The execution of the surface preparation and lining shall be carefully planned in stages to obtain optimum lining quality with freedom from contamination and overspray or damage to lined surfaces from preparation in adjacent areas. Surface preparation will commence from the top and proceed progressively to the wall base and floor.
- e) After blasting, blasted surface shall be jointly inspected by vendor & BHEL. In case any mechanical defect is observed, the same shall be rectified through welding / grinding by BHEL and re-blasting shall be in vendor's scope. Trained Supervisor of vendor shall visit the site along with BHEL. For this purpose, vendor's scaffolding will be used by BHEL and vendor shall not charge extra for the same. Vendor shall suitably consider a maximum time of one month for using their scaffolding
- f) Lining and preparation works shall be staggered or proceed progressively in order to meet cleanliness requirements or overcoating times indicated in this specification.
- g) The total area to be lined/coated as indicated in this specification may vary +/-10%. Hence, after the completion of work the total area lined will be jointly calculated by BHEL and the vendor. Final payment will be made based on the calculated area. Lining price quoted by vendor per sq.m shall be considered for making the final payment.

	TECHNICAL SPECIFICATION FOR GLASS FLAKE LINING OF SLURRY TANKS	REF: FGD:GFL-TNKS
		REV. No. 02

- h) Air-Compressor, Airless Spray pumps, hopper, blasting hose, lining hose, spray tip, blasting gun, spray gun and other equipment for blasting and spray application has to be arranged by lining vendor. Power required for running the compressor, lighting, welding, cold storage, etc will be provided by BHEL free of cost. In case of Diesel compressor, vendor to arrange the diesel themselves. Water, if required, shall be provided by BHEL free of cost. Compressed air and instrument air will not be provided. Any cold storage container, if required, shall be arranged by vendor. Any scaffolding shall be made of Steel only. Scaffolding material shall be arranged by vendor. All travel, TA/DA, Stay charges, site visit charges shall be in vendor's scope.
- i) BHEL will identify the power supply tapping point within 100 meters (approx.) range of the Lining location at Site. All necessary accessories (e.g., Cables, Distribution Board, Fuses, Switches & Switchgears etc.) required to draw power supply for any equipment used for Glass Flake lining work shall be arranged by vendor only.
- j) Any covering required to protect the materials/ the Lining Surface (from rain, sun etc.) during surface preparation & Glass Flake lining application shall be arranged by the vendor.
- k) Vendor has to arrange cables from the identified power supply tapping point to the container location for air conditioning.
- l) Vendor has to arrange cables from the identified power supply tapping point to absorber/duct location for running the compressor. In case of electric driven compressor, BHEL will provide power supply free of cost. In case of diesel compressor, diesel shall be arranged by the vendor at their cost. Reimbursement for diesel cost shall not be entertained by BHEL.
- m) Lighting arrangements required inside the absorber/duct and relevant wiring are in vendor's scope.
- n) Exhaust and Man cooler fan required inside the absorber/duct and relevant wiring are in vendor's scope.
- o) Material shifting from container to lining location or vice-versa on day-to-day basis shall be in vendor's scope.
- p) Disposal of used copper slag and any other scrap to the identified location shall be vendor's scope.
- q) Boarding & lodging for vendor's crew including supervisor shall be vendor's scope.
- r) Daily conveyance from lodging to work spot or vice-versa for vendor's crew including supervisor shall be in vendor's scope.

	TECHNICAL SPECIFICATION FOR GLASS FLAKE LINING OF SLURRY TANKS	REF: FGD:GFL-TNKS
		REV. No. 02

- s) Tentative date of readiness of site will be informed by M/s BHEL based on the project progress.
- t) Vendor to supply the materials progressively meeting the site requirement even for the readiness of partial area.
- u) Vendor is responsible for shelflife of the items from supply to till completion of application.
- v) Storage of the items in A-C or Non AC containers (depending on the storage requirement) till completion of application is vendor's responsibility.
- w) Any repair work arising at a later stage, due to damages made during Equipment Erection by BHEL, shall be rectified by vendor at the same rate agreed as per the Purchase Order.

5.0 ATMOSPHERIC CONDITION REQUIREMENTS

This section deals with the atmospheric condition requirement to be checked while undertaking the Glass Flake Lining at site.

1. Blasting or Coating shall not be applied if following conditions prevail.
 - When temperature of the surface to be coated is less than 3°C above the dew point, or the relative humidity is higher than 85%.
 - When the base metal temperature is greater than 60°C.
 - When the atmospheric temperature is below 4°C.
 - When there is, in the opinion of lining Contractor, the likely hood of an unfavourable change in the weather condition within 2 hours after coating.
 - When there is deposition of moisture in the form of rain or condensation.
2. Humidity shall be calculated by bidder using whirling hygrometer whose thermometers are calibrated.
3. Surface temperature shall be measured using suitable temperature gauge and calibration certificate of the same shall be provided by bidder.
4. Record will be maintained throughout the execution period. Readings shall be taken once in every 4 hours up to the time work is in progress. The frequency of reading should be increased during adverse weather conditions.
5. While working in unfavourable weather conditions (like monsoons or winters or if provided for in the contract or in large confined spaces where blasting and priming of the entire surface cannot be completed in one days operation, use of dehumidifier shall be resorted to. The dehumidification equipment will have to be maintained in such a way that the humidity

	TECHNICAL SPECIFICATION FOR GLASS FLAKE LINING OF SLURRY TANKS	REF: FGD:GFL-TNKS
		REV. No. 02

is around 65% -75% inside the sump at all times during the work. No flash rusting of the blast surface should take place till the time it receives a primer coat.

6. Where dehumidification equipment is to be used the humidity readings are to be taken inside and outside the equipments to be coated.
7. Dehumidification equipment may not be necessary for contained space working if work is done at near ideal atmospheric conditions as described above.
8. In cases where dehumidification is not possible, alternate methods of warming up the work front like use of halogen lights, room heaters are to be adopted.
9. Humidity is to be taken at the location where the blasting coating operations taking place.

5.1 APPLICATION & MEDIUM:

Glass flake lining is done in order to protect the slurry tanks which contain limestone/gypsum slurry. Coated surfaces are exposed to slurry whose conditions are given in Table-1 . Typical Drawing of the Tanks is enclosed.

6.0 PRELIMINARY CHECK REQUIREMENTS

This section deals with the preliminary check requirements to be done while doing the lining work.

6.1 CHLORIDE CONTAMINATION TEST:

The 2% ferricyanide paper method will generally be used to determine the chloride contamination as described below:

1. Apply de-mineralized water on approximate 12 cm² area of substrate and wait for 3 to 4 minutes.
2. Remove excess moisture by patting the substrate with clean lint free cloth.
3. Press a ferricyanide paper of approximate 12 cm² area against the substrate for approximately 5 seconds and remove the paper.
4. Total absence of blue spots on paper indicates the substrate is free from soluble salts
5. Light speckling paper indicates the substrate has still contamination but it is as the acceptance level. The component should be released for further process.
6. Large blue spots on the paper indicate the substrate is heavily contaminated.
7. In this case the following procedure to be done before coating.
 - i. Pressures wash the substrate with copious amount of town water.
 - ii. Dry the substrate completely.
 - iii. Re-blasts the surface.

	TECHNICAL SPECIFICATION FOR GLASS FLAKE LINING OF SLURRY TANKS	REF: FGD:GFL-TNKS
		REV. No. 02

- iv. Follow the salt contamination checking procedure again till you get the desired results.
8. The Ferricyanide papers should be stored by vendor in air tight container before and after use and the shelf life of Ferricyanide paper shall be one month.

6.2 ABRASIVE DRYNESS CHECK:

The abrasive to be used will be checked for dryness by taking a small quantity of abrasive on a filter /tissue paper and checking of traces of moisture absorbed in the filter/tissue paper. Frequency of test shall be once in day prior to blasting operation.

6.3 COMPRESSED AIR DRYNESS CHECK:

Compressed air to be used for blasting shall be free from oil & moisture and shall be tested adopting "Blotter Test" by vendor. A piece of blasting Paper will be held in front of blast hose nozzle to check for traces of oil/moisture captured by the blotting Paper. Frequency of test shall be once in day prior to blasting operation.

7.0 SURFACE PREPARATION

This section deals with the methods of surface preparation before coating application

7.1 MASKING:

1. Bidder to ensure that areas not being coated are fully and adequately masked.
2. Bidder to ensure that stud holes, dowel/oil ways etc. are suitably masked or plugged to prevent ingress of blasting abrasives.

7.2 SURFACE PREPARATION METHODS:

The method of surface preparation dry abrasive manual blasting shall be done as follows:

1. Surface to be coated shall be abrasive blasted. Before this operation, removal of existing coating to be carried out by chipping, grinding or by other suitable means. The walls of the tanks are painted with min 60 μ DFT of Red Oxide Phosphate(rust proof primer), which is to be removed by vendor during blasting. Clean & dry Copper Slag Abrasive shall be used for ferrous base substrate.

	TECHNICAL SPECIFICATION FOR GLASS FLAKE LINING OF SLURRY TANKS	REF: FGD:GFL-TNKS
		REV. No. 02

2. Bidder is requested to go through all sections of the Typical GAD drawing of Slurry tank. Vendor may raise their observations during pre-bid query. Any other new requirements brought forward during technical evaluation stage shall not be considered by BHEL.
3. The minimum recommended compressed air required for Blasting shall be 7.0 m³/min at 6 kg/cm² pressure. NACE No.1/SSPC-SP-5 equivalent to SA 2½ of Swedish Standard blast profile (75 to 100 Microns) to be followed for cleaning the surface.
4. The blasted surface shall be cleaned with dry compressed air/vacuum cleaner or with clean brush so that there is no presence of Dust & other foreign material. The surface will be then checked for chloride contamination (Refer Clause.6.1 for Chloride contamination check procedure). If contamination is found then the surface to be washed and reblasted till contamination gets removed. Vendor to ensure that the blasted surface free from chloride contamination
5. When cleanliness and blast profile are acceptable, the masking tape adjacent to the area to be coated shall be peeled back to prevent overlap and subsequent edge contamination.
6. If the blasted surface has not been primed within specified time or if there is any previous visible sign of blast condition change then the surface shall be checked for metallic salt contamination and shall be reblasted. Where large areas are required to be blasted in a day, blasting shall be carried out from morning to evening ensuring weather condition. This shall be followed by a light sweep blast of the entire area, before priming. The blast cleaned surface shall be blown off with dry oil free compressed air or vacuum cleaned. A cell tape shall be thoroughly pasted to the cleaned surfaces. The tape shall be removed after a minute to check presence of dust if any. Comparator shall be used by vendor for checking the blast profile.

8.0 COATING APPLICATION

This section deals with the methods & requirements of coating application.

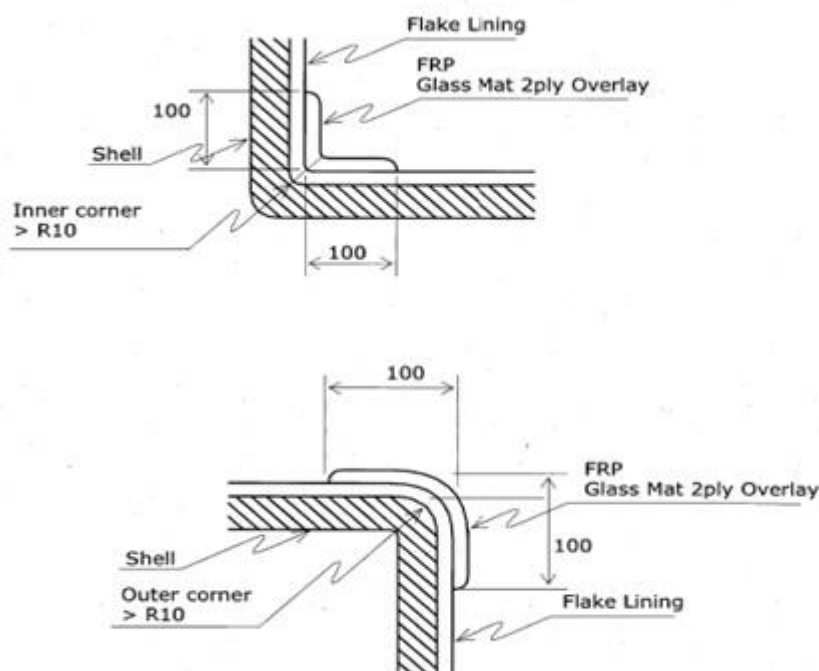
8.1 MIXING:

1. All coating material tins shall be individually stirred thoroughly to obtain a homogenous consistency.
2. While doing spray application, the tins which come in pre measured kits will be fully mixed individually using a pneumatic stirrer. While doing hand application only small batches of 1 Kg. capacity shall be taken. Here the mixing will be done by using a metal spatula.
3. The mixing ratios as specified in the respective data sheet will be strictly adhered to. The base will be weighed out in kgs using mechanical weighing machines calibrated at site using any standard factory packed commercial product available freely in the market. The catalyst will be measured out in ML using marked syringes or measuring cylinders.

	TECHNICAL SPECIFICATION FOR GLASS FLAKE LINING OF SLURRY TANKS	REF: FGD:GFL-TNKS
		REV. No. 02

8.2 APPLICATION PROCESS:

1. The preparation and application of coating is done as per relevant product data sheet. Reference will be made to product datasheet or where appropriate, contract specifications for carrying out coating.
2. Coating in confined spaces should be done when the ambient temperature is low to avoid excess build up of styrene fumes.
3. The entire thickness will be built in multiple coating.
4. Each coat will consist of minimum two passes of wet on wet in perpendicular directions.
5. The Dry film thickness will built of each coat will be checked and recorded.
6. All the other people working with the paint will be provided with eye splash goggles and masks.
7. Glass flake lining material shall be chosen considering the slurry conditions given in Annexure-III
8. Minimum and maximum intercoat intervals are as follows.
 - a. For primer coat -At 20°C minimum 2 hours, maximum 14 hours.
 - b. For build-up coats-minimum tack free of previous coat, maximum 3 days.
9. Primer coat shall be of 75-100 μm thickness
10. Built up Coat shall be of 3000-3100 μm in multiple coats.
11. Total System DFT: 3000 microns approx
12. All weld joints phase transition joints will receive a stripe coat by brush in the same sequence of coating on the shell.
13. For corners of the vessel/tank, the following procedure shall be applied:



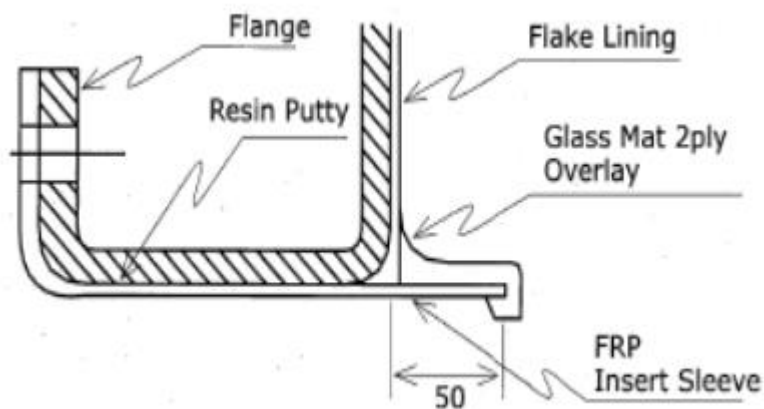


TECHNICAL SPECIFICATION FOR GLASS FLAKE
LINING OF SLURRY TANKS

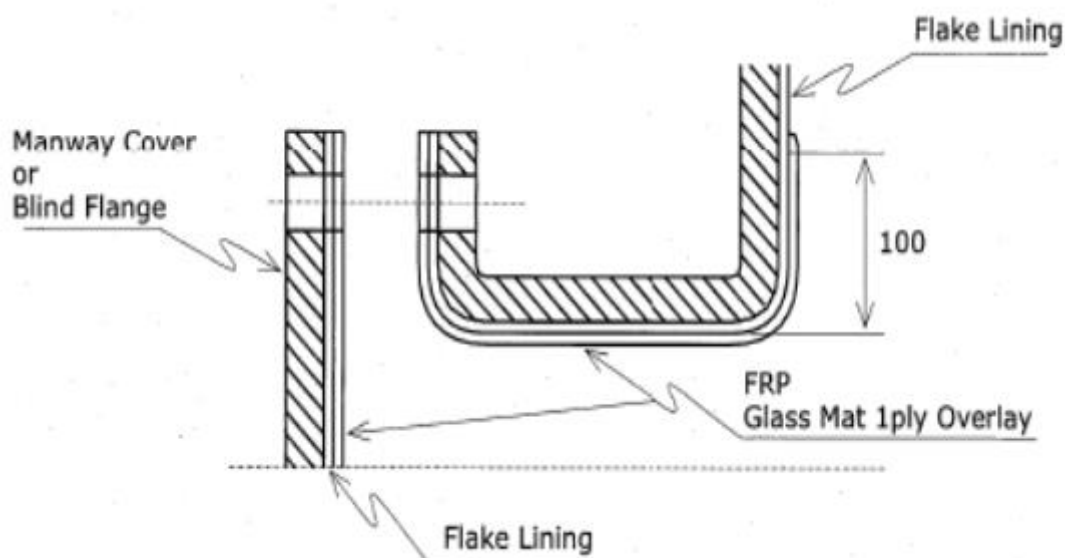
REF: FGD:GFL-TNKS

REV. No. 02

14. For the inside of the Nozzle 200A(8") and less, use the following application procedure

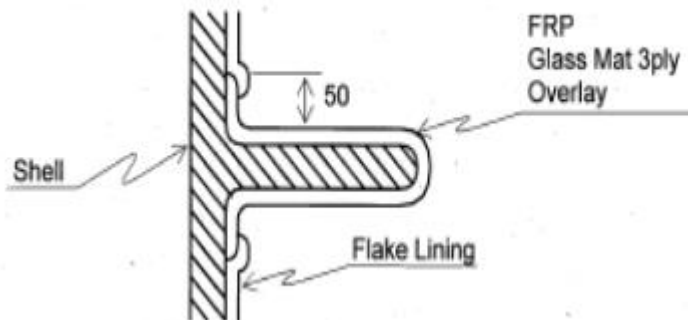


15. For the Inside of the Nozzle 250A(10") and more, use the following application procedure



	TECHNICAL SPECIFICATION FOR GLASS FLAKE LINING OF SLURRY TANKS	REF: FGD:GFL-TNKS
		REV. No. 02

16. For Plate projected from vessel, use the following application procedure:



The area for FRP Fibrematting will be max 10% of the Tank area. Vendor shall consider the same suitably in their Offer.

8.3 CURING & FINISH:

1. Curing:

The completed linings shall be allowed to cure for a minimum of 48 hrs at 30°C prior to being placed in service. However, curing time shall be as per the datasheet provided by vendor for a proven material.

2. Finish:

It is to be noted that the coating will follow the profile of substrate. Any unevenness or other defects in the substrate may be reflected in the finish coating also. The finished coating shall have a matt/semi-glossy finish. A few local paint sag marks will not affect performance of coating and cannot be completely avoided. Hence this is permitted.

9.0 INSPECTION AND TESTING OF GLASS FLAKE LINING

After the completion of lining, the following tests shall be conducted by the vendor to assess the quality of glass flake lined surfaces.

1. Visual Check

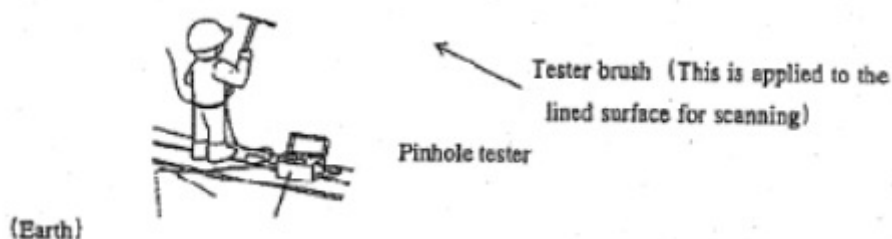
The entire lined surface shall be visually checked to ensure that there is no harmful defect. Significant unevenness, insufficient impregnation of resin, presence of foreign substances, excessive air bubbles, blisters, peeling off, scratches, insufficient hardening, wrinkles etc., are prohibited.

Criteria: No defect

2. Pinhole Check

	TECHNICAL SPECIFICATION FOR GLASS FLAKE LINING OF SLURRY TANKS	REF: FGD:GFL-TNKS
		REV. No. 02

The entire lined surface shall be checked with a discharge type pinhole tester. The entire surface shall be scanned with a brush connected to the tester at a speed of 12" to 20" per second.



Criteria: No defect

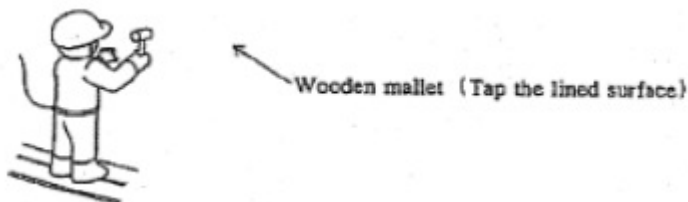
3. Film Thickness Test

Handy electromagnetic film thickness tester is used to check the coated film thickness. One point per every 20 ft² shall be sampled and film thickness at each point shall be measured with gauge. The gauge measuring head shall be gently pressed against the wall.



4. Hammering Test.

The lined surface shall be tapped with a wooden mallet at one point per every 300 ft² to check that the liner is not separated from the wall. Unusual noise by hammering indicates a defect.



Criteria: No unusual noise

- Testing of coatings is normally carried out as soon as they are sufficiently cured to give true thickness & to withstand damage by the test equipment. If defects are found, repair will be carried out as per clause 10.0

	TECHNICAL SPECIFICATION FOR GLASS FLAKE LINING OF SLURRY TANKS	REF: FGD:GFL-TNKS
		REV. No. 02

6. Spark test shall be carried out at appropriate areas in the presence of Purchaser. Vendor should conduct holiday test as per relevant standards. If the performance is found not to meet the requirements as specified, the Glass flake lining shall be rectified or replaced by the Vendor without any additional cost to the Purchaser. The repair shall be carried out as per clause 10.0
7. Proper documentation with details of tests conducted by the vendor for evaluation of glass flake lining shall be submitted to the purchaser.

10.0 REPAIRING PROCEDURE FOR GLASS FLAKE COATING

1. If the exposed or damaged surface less than 10cm² then such repair can be carried out without grit blasting. Any area in excess of this amount should be grit blasted using a vacuum blaster where possible.
2. In case of damage area less than 10cm² then it can be repaired as following.
 - a. De-contaminate surrounding area by using a suitable solvent such as methylated spirit, acetone, xylene etc. After washing clean and allow solvent to evaporate.
 - b. Roughen up exposed metal & clean using rotary wire brush or a coarse emery paper with at least 60 grade grit. Brush away residues then further roughen surface of the existing coating up to 100 mm away from the damaged area. Brush away residues & ensure the whole area is clean.
 - c. Apply a thin coat of material to the surface of the exposed metal only taking care not to cover more than a few millimetre of the existing coating. Allow this freshly applied material to become tack-free.
 - d. Brush styrene monomer over the whole surface to be repaired (i.e. the whole area roughened by emery) & allow to evaporate from the surface.
 - e. Apply at least 2 main coats material over the treated area taking care not to brush on to any roughened or contaminated areas. The Glass flake should be allowed to harden sufficiently to bear the weight of next coat before application of further coats. However it does not need to be tack-free between coats.

11.0 PERFORMANCE GUARANTEE

The lining shall be guaranteed for uninterrupted minimum life of 2 years from the date of operation. Performance parameters to be guaranteed by the vendor and tolerances permitted shall be as indicated in the data sheet. Glass Flake lining or any portion thereof is liable for rejection, if it fails to give any of the guaranteed performance parameters. During Guarantee period any defects noticed due to faulty material and workmanship, shall be rectified by vendor free of cost.

12.0 PACKING

The part items of the Glass flake lining should be identified by Tag numbers and should be packed as to minimize the possibility of damage during storage or transit. The packing should be suitable for

	TECHNICAL SPECIFICATION FOR GLASS FLAKE LINING OF SLURRY TANKS	REF: FGD:GFL-TNKS REV. No. 02
---	---	--

tropical conditions. BHEL site will arrange for the space for storage. Vendor shall make arrangements for storing the Glass flake lining materials in AC containers at site. The list of items identified as despatchable units shall be furnished along with unit weight and the quantity for preparation of packing slip at BHEL end for dispatch to site and for easy identification, storage and erection at site.

Note:

- a) The Lining area indicated is only tentative. Actual area will have a Quantity Tolerance of +/- 10%. Payment will be made based on actual area lined after joint assessment by BHEL Site and Vendor. Vendor shall furnish Job Completion Certificate indicating the Area duly certified by Site in Charge. The applicable rate will be based on the Purchase Order price per sq.m.
- b) Vendor shall clearly provide the price break up for the Supply cost and Application charges as per the format enclosed with the Enquiry.

	TECHNICAL SPECIFICATION FOR GLASS FLAKE LINING OF SLURRY TANKS	REF: FGD:GFL-TNKS
		REV. No. 02

Table -1 Process Parameters

The tanks will be handling slurry whose details are given below:

Sl. No.	Parameter	Slurry
1	Slurry to be handled	Limestone/Gypsum Slurry
2	Maximum solid particle size	From 75 micron to 7 mm
3	Normal solid particle size, d50	325 mesh (43 micron)
6	Chloride concentration	30,000 ppm (max)
7	Hardness of particle	5-7 (Mho scale)
8	Slurry concentration	30 wt%
10	Sp. Gravity of Slurry	1.22
11	Sp. Gravity of Limestone or Gypsum	2.32
12	Viscosity	3 cP to 30 cP
13	Temperature(deg)	70 deg C

Note: Lining material chosen shall withstand a maximum service temperature of 85 deg C.

	TECHNICAL SPECIFICATION FOR GLASS FLAKE LINING OF SLURRY TANKS	REF: FGD:GFL-TNKS
		REV. No. 02

ANNEXURE - I**TECHNICAL DEVIATION (IF ANY)****Enquiry No:**

Sl. No	Sec / Clause no.	Specification	Statement of deviations/ variations	Reason for deviation	Cause of withdrawal
1.					
2.					
3.					
4.					
5.					
6.					
7.					
8.					
9.					
10.					

Note: All deviations/exceptions, if any must only be given in the Deviation Schedule. Any deviation/exception mentioned elsewhere would not be considered for evaluation.

SIGNATURE OF BIDDER -----

NAME -----

DESIGNATION -----

	TECHNICAL SPECIFICATION FOR GLASS FLAKE LINING OF SLURRY TANKS	REF: FGD:GFL-TNKS
		REV. No. 02

ANNEXURE – II- SCHEDULE OF GUARANTEES

We, _____
guarantee that the Glass Flake Lining Lining proposed for this project will have an uninterrupted minimum life of **2 years from the date of operationd.**

The lining is guaranteed for faultless material and workmanship and also for a period as mentioned above from the date of handing over. During the Guarantee period any defects noticed due to faulty material and workmanship, the same shall be rectified by us free of cost.

SIGNATURE OF BIDDER (Glass Flake resin Manufacturer) -----

NAME -----

DESIGNATION -----

	TECHNICAL SPECIFICATION FOR GLASS FLAKE LINING OF SLURRY TANKS	REF: FGD:GFL-TNKS
		REV. No. 02

ANNEXURE – III

REFERENCE LIST as per format shown below.

S. No.	Project Name, Customer & Plant capacity	Coal fired Yes/No	Wet Limestone Based FGD (Yes/No)	Year of Commg	Glass Lining Area

SIGNATURE OF BIDDER -----

NAME -----

DESIGNATION -----



**DETAILS OF TANKS TO BE LINED FOR FGD NALCO
Damanjodi 18.5 MW**

**ANNEXURE--
NALCO : SLT : LINING :**

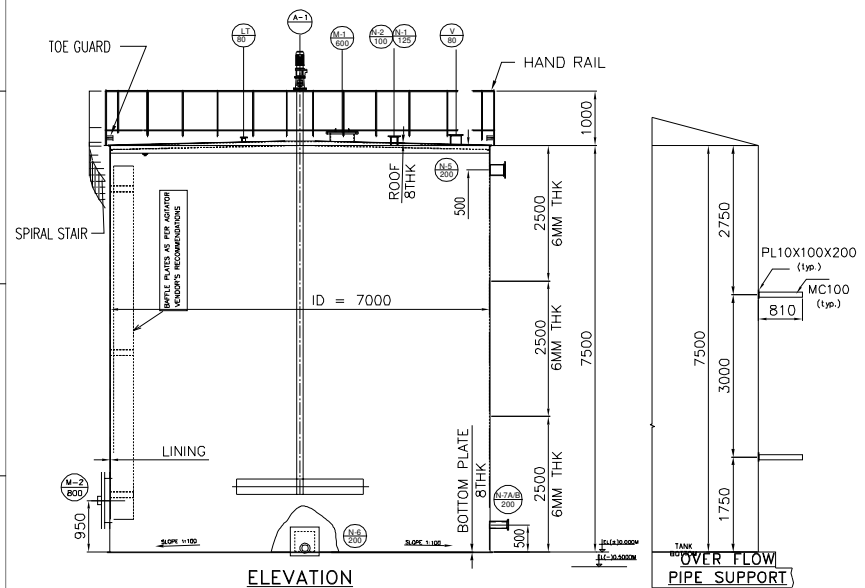
REV. No. 00

Details of the Tanks to be Lined are given below :

S.NO	TANK NAME	Tank MOC	Tank Shape	Tank Dimensions in Meter	Approximate Area to be Lined
1	Auxiliary Absorbent Tank (1 No)	Carbon Steel	Circular	7 Dia X 7.5 Height	266.2
2	Limestone Slurry Storage Tank (1 No)	Carbon Steel	Circular	5.5 Dia X 6.6 Height	178.2
3	Secondary Hydrocyclone Feed Tank (1 No)	Carbon Steel	Circular	4.5 Dia X 5.3 Height	117.7
4	Filtrate Water Tank (1 No)	Carbon Steel	Circular	5.5 Dia X 5.5 Height	157.3
5	Waste water Tank (1 No)	Carbon Steel	Circular	4 Dia X 4 Height	83.6
6	Absorber Area Drain (1 No)	Concrete	Rectangular	4 W X 4 L X 4 H	105.6
7	Gypsum Area Drain (1 No)	Concrete	Rectangular	4 W X 4 L X 4 H	105.6
8	Limestone Area Drain(1 No)	Concrete	Rectangular	4 W X 4 L X 4 H	105.6
Total Area (Rounded Off to)					1150m ²

	Rev 00		Rev 01		Rev 02	
	Sign	Date	Sign	Date	Sign	Date
Prepared : JKP	sd	22.09.21				
Reviewer: SSS	sd	22.09.21				
Approver: VK	sd	22.09.21				

DRAWING NO. 0-FW-000-05128



DESIGN DATA	
DESIGN CODE	- IS:803 1976 (REAFFIRMED 2013)
STORAGE PRODUCT	- GYPSUM BLEED/SLURRY
TANK CAPACITY (HOLD VOLUME)	M ³ 257.7
TANK CAPACITY (EFFECTIVE)	M ³ 250.02
TYPE OF TANK	- VERTICAL CYLINDRICAL FIXED CONE ROOF
ROOF SLOPE	- 5°
DESIGN PRESSURE	- HYDROSTATIC HEAD
OPERATING PRESSURE	- ATMOSPHERIC
OPERATING TEMPERATURE	C 58
SPECIFIC GRAVITY	Kg/M ³ 1216
NO. OF TANK	NO. 01
DIAMETER (I.D)	MM 7000
HEIGHT	MM 7500
INSIDE LINING	- 3 MM GLASS FLAKE LINING

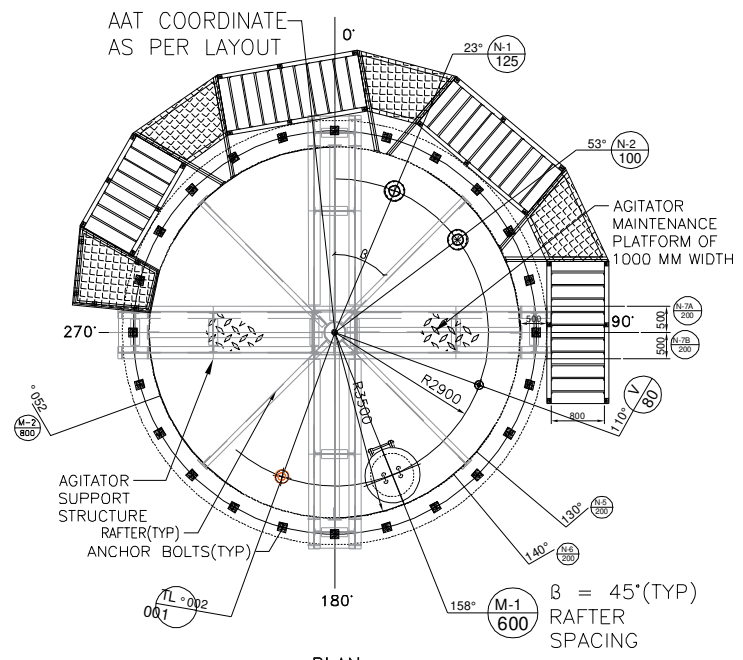
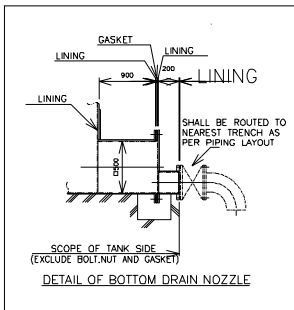
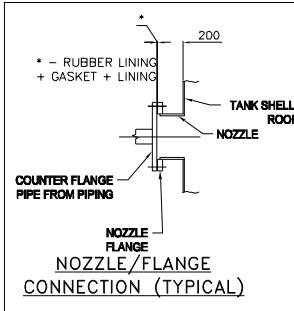
NOZZLE SCHEDULE							
NOZZLE		Sch. No.	QTY	FLANGE		SERVICE	REMARKS
MARK	SIZE			RATING	FACING		
A-1	-	-	1	-	-	AGITATOR	
M-1	NB600	-	1	-	SOFF PLATE	MANHOLE	WITH HINGE
M-2	NB800	-	1	PLATE	SOFF	MANHOLE	WITH HINGE
N-1	NB125	-	1	150	SOFF	ANSI B16.5	LIQUID INLET
N-2	NB100	-	1	150	SOFF	ANSI B16.5	LIQUID INLET
LT	NB80	-	1	150	SOFF	ANSI B16.5	LEVEL TRANSMITTER
V	NB80	-	1	150	SOFF	ANSI B16.5	VENT
N-5	NB200	-	1	150	SOFF	ANSI B16.5	OVER FLOW
N-6	NB200	-	1	150	SOFF	ANSI B16.5	BOTTOM DRAIN
N-7A/B	NB80	-	2	150	SOFF	ANSI B16.5	PUMP SUCTION

ALL NOZZLES ARE NOT IN ONE PLANE. REFER PLAN VIEW FOR TRUE ORIENTATION OF NOZZLES AND STAIR CASE

NOTES:

- ALL DIMENSIONS ARE IN MM. UNLESS SPECIFIED OTHERWISE.
- EL(+)-0.00 CORRESPONDS TO RL(+)-900.300
- FOR LOCATION REFER FGD SYSTEM LAYOUT, DRG NO PY-LQ-0-M166-2001-01
- OUTSIDE NOZZLE PROJECTION IS 200MM UNLESS OTHERWISE SPECIFIED.
- NOZZLE REINFORCEMENTS SHALL BE AS PER IS803.
- NOZZLE PROJECTIONS ARE MEASURED FROM TANK SHELL INNER TO THE FLANGE FACE AS APPLICABLE.
- ALL REINFORCEMENT PADS SHALL BE PROVIDED WITH 6MM TELLTALE HOLE.
- NOZZLE AND FLANGE DETAILS SHALL BE AS PER IS803.
- ALL BOLT HOLES SHALL STRADDLE VERTICAL CENTERLINES ON SHELL AND RADIAL CENTERLINES ON ROOF UNLESS SPECIFIED OTHERWISE.
- ALL PROTRUSIONS, SHARP EDGES AND SPATTER, ETC. SHALL BE REMOVED FROM THE SURFACE AND ALL WELDS GROUND SMOOTH WITHOUT ANY CAVITIES AND IMPERFECTION BEFORE LINING.
- HYDRO TEST SHALL BE AS PER IS803. LINING SHALL BE CARRIED-OUT AFTER HYDRO TEST.

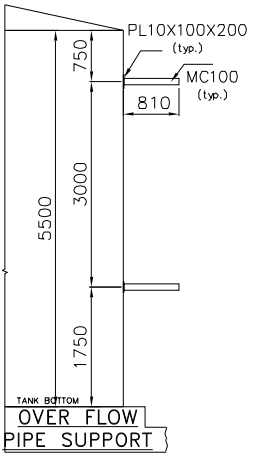
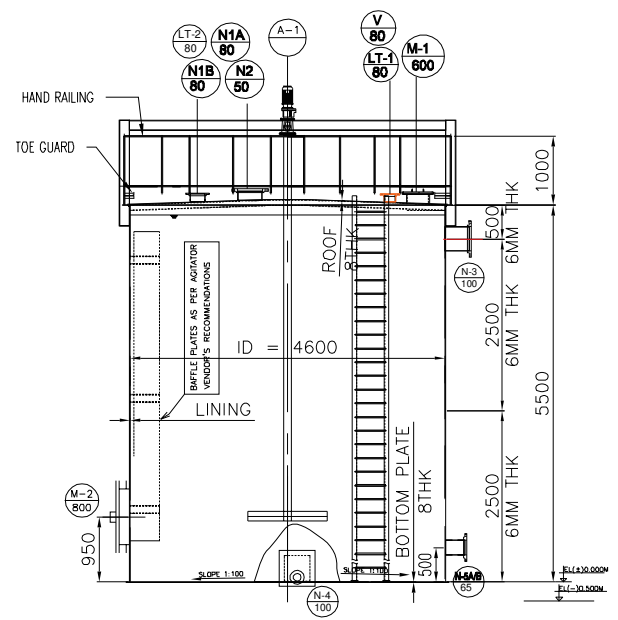
MATERIAL SPECIFICATION	
ITEM	MATERIAL
SHELL, ROOF, BASE AND BAFFLE PLATE, STRUCTURES, STAIRWAYS & PLITS, MANHOLE, NOZZLE, NOZZLE FLANGES, NOZZLE REINFORCEMENT	CARBON STEEL (IS2062 OR EQUIVALENT)



* BOI VENDOR TO ENSURE NOZZLE CONNECTIONS

CLIENT	NATIONAL ALUMINIUM COMPANY LIMITED BHUBANESWAR, ODISHA
CONSULTANT	M. N. DASTUR & COMPANY (P) LTD CONSULTING ENGINEERS, KOLKATA
PROJECT	INSTALLATION OF STEAM AND POWER PLANT FOR 5th STRAM ALUMINA REFINERY EXPANSION AT DAMANJODI, ODISHA UNDER PHASE-3 EXPANSION OF MNR COMPLEX
DATE	12.08.21
NAME	ISS
SIGN.	AK.SAMANI
DATE	12.08.21
NAME	K.B.PADIE
SIGN.	12.08.21
DEPT. CODE	450
UNITS, DIMS OR SCALE	SCALE NTS
WEIGHT (KG)	REF. TO ASSY. DRG.
TITLE	GENERAL ARRANGEMENT AND DATA SHEET OF AUXILIARY ABSORBENT (STORAGE) TANK
DRAWING NO.	0-FW-000-05128
REV.	00
SI	01 OF 09

82160-000-M-3-0 '0 ON ON/MA/D



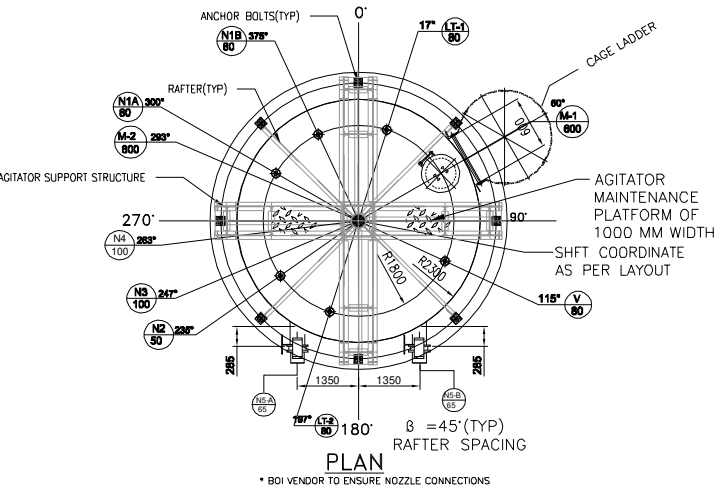
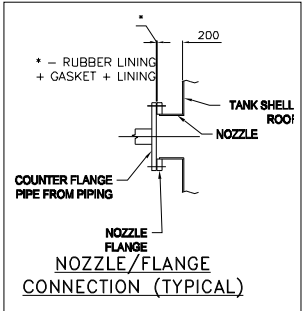
DESIGN DATA	
DESIGN CODE	- IS:803 1976 (REAFFIRMED 2013)
STORAGE PRODUCT	- PRIMARY HYDRO CYCLONE OVERFLOW (GYPSUM SLURRY)
TANK CAPACITY (HOLD VOLUME)	M ³ 83.1
TANK CAPACITY (EFFECTIVE)	M ³ 59.8
TYPE OF TANK	- VERTICAL CYLINDRICAL FIXED CONE ROOF
ROOF SLOPE	- 5
DESIGN PRESSURE	- HYDROSTATIC HEAD
OPERATING PRESSURE	- ATMOSPHERIC
OPERATING TEMPERATURE	°C 58
SPECIFIC GRAVITY	Kg/M ³ 1216
NO. OF TANK	NO. 01
DIAMETER (I.D)	MM 4600
HEIGHT	MM 5500
INSIDE LINING	- 3 MM GLASS FLAKE LINING

NOZZLE SCHEDULE						
MARK	SIZE	Sch. No.	QTY	FLANGE		REMARKS
				RATING	FACING	
A-1	-	-	1	-	-	AGITATOR
M-1	NB600	-	1	-	SOFF PLATE	MAN-HOLE WITH HINGE
M-2	NB800	-	1	PLATE	SOFF	MAN-HOLE WITH HINGE
N-1A/B	NB80	-	2	150	SOFF	ANSI B16.5 LIQUID INLET
N-2	NB50	-	1	150	SOFF	ANSI B16.5 MINIMUM FLOW
N-3	NB100	-	1	150	SOFF	ANSI B16.5 OVER FLOW
LT-1&2	NB80	-	2	150	SOFF	ANSI B16.5 LEVEL TRANSMITTER
V	NB80	-	1	150	SOFF	ANSI B16.5 VENT
N-4	NB100	-	1	150	SOFF	ANSI B16.5 BOTTOM DRAIN
N-5A/B	NB65	-	2	150	SOFF	ANSI B16.5 PUMP SUCTION

ELEVATION

ALL NOZZLES ARE NOT IN ONE PLANE. REFER PLAN VIEW FOR TRUE ORIENTATION OF NOZZLES AND STAIR CASE.

MATERIAL SPECIFICATION	
ITEM	MATERIAL
SHELL, ROOF, BASE AND BAFFLE PLATE, STRUCTURES, STAIRWAYS & PLTFs, MANHOLE, NOZZLE, NOZZLE FLANGES, NOZZLE REINFORCEMENT	CARBON STEEL (IS2062 OR EQUIVALENT)



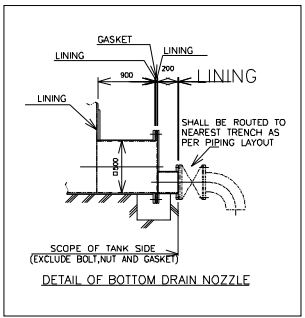
PLAN

* BOI VENDOR TO ENSURE NOZZLE CONNECTIONS

NOTES:

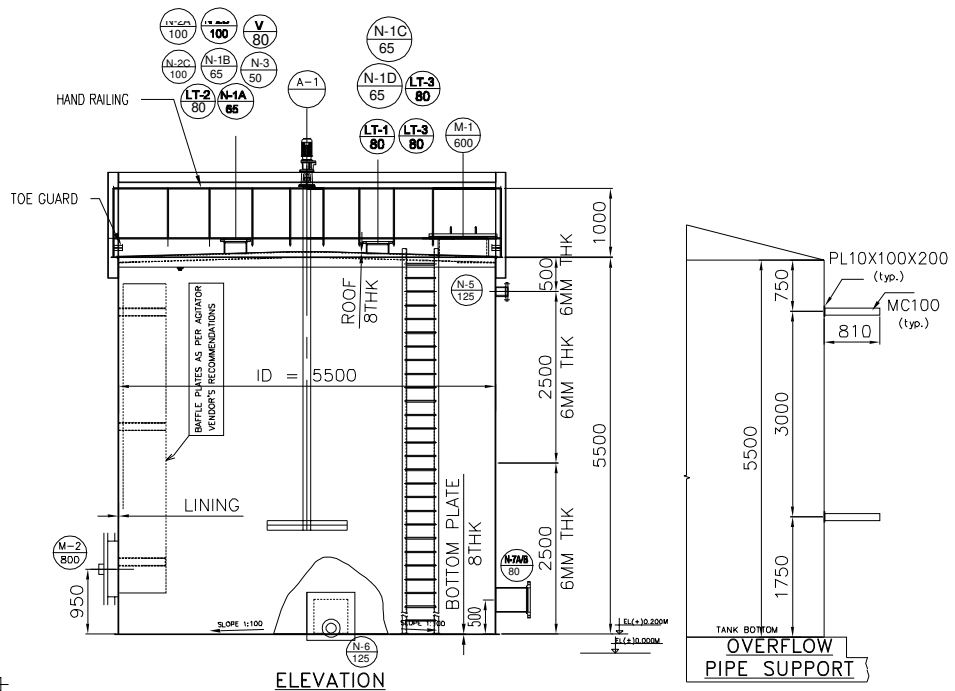
- ALL DIMENSIONS ARE IN MM. UNLESS SPECIFIED OTHERWISE.
- EL(+)-0.00 CORRESPONDS TO RL(+)-900.300.
- FOR LOCATION REFER FGD SYSTEM LAYOUT, DRG NO PY-LQ-0-M166-2001-01
- OUTSIDE NOZZLE PROJECTION IS 200MM UNLESS OTHERWISE SPECIFIED.
- NOZZLE REINFORCEMENTS SHALL BE AS PER IS:803.
- NOZZLE PROJECTIONS ARE MEASURED FROM TANK SHELL INNER TO THE FLANGE FACE AS APPLICABLE.
- ALL REINFORCEMENT PADS SHALL BE PROVIDED WITH 6MM TELLTALE HOLE.
- NOZZLE AND FLANGE DETAILS SHALL BE AS PER IS:803.
- ALL BOLT HOLES SHALL STRADDLE VERTICAL CENTERLINES ON SHELL AND RADIAL CENTERLINES ON ROOF UNLESS SPECIFIED OTHERWISE.
- ALL PROTRUSIONS, SHARP EDGES AND SPATTER, ETC. SHALL BE REMOVED FROM THE SURFACE AND ALL WELDS GROUND SMOOTH WITHOUT ANY CAVITIES AND IMPERFECTION BEFORE LINING.
- HYDRO TEST SHALL BE AS PER IS:803. LINING SHALL BE CARRIED-OUT AFTER HYDRO TEST.

** AGITATOR SHOWN ARE INDICATIVE WILL BE FINALIZED DURING DETAIL ENGINEERING.
 *** NOZZLE LOCATION SHOWN IN DRAWING ARE INDICATIVE WILL BE FINALIZED DURING DETAIL ENGINEERING.



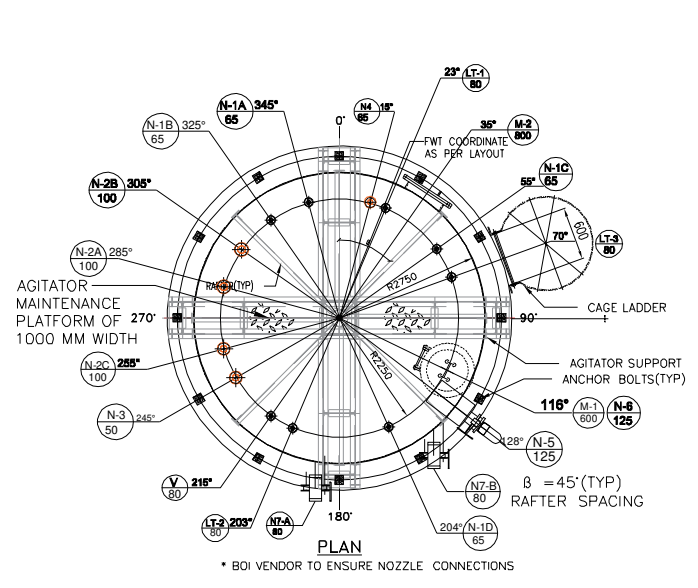
CLIENT	NATIONAL ALUMINIUM COMPANY LIMITED BHUBANESWAR, ODISHA
CONSULTANT	M. N. DASTUR & COMPANY (P) LTD CONSULTING ENGINEERS, KOLKATA
PROJECT	INSTALLATION OF STEAM AND POWER PLANT FOR 5th STRAM ALUMINA RESINERY EXPANSION AT DAMANJODI, ODISHA UNDER PHASE-3 EXPANSION OF NALCO COMPLEX
DATE	12.08.21
NAME	AK.SAHANI
SIGN.	K.B.PADHI
DATE	12.08.21
DEPT. CODE	450
UNIT, DWS OR SCALE	
SCALE	NTS
WEIGHT (KG)	
REF. TO ASSY. DRG.	
TITLE	GENERAL ARRANGEMENT OF SECONDARY HYDROCYCLONE FEED TANK
DRAWING NO.	0-FW-000-05128
REV.	00
SHI 06 OF 09	

02190-000-001-0 ON CH/DAV/MS

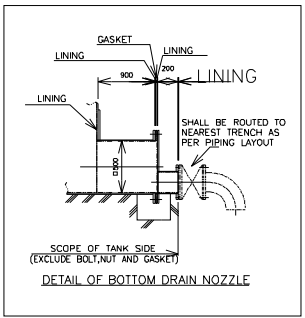
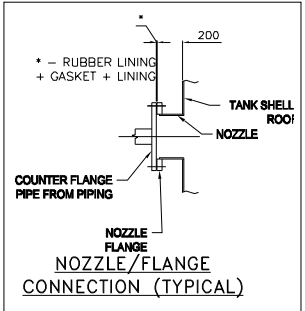


DESIGN DATA		
DESIGN CODE	-	IS:803 1976 (REAFFIRMED 2013)
STORAGE PRODUCT	-	FILTER WATER FROM VBF AND UNDERFLOW OF SEC HYDRO CYCLONE
TANK CAPACITY (HOLD VOLUME)	M ³	118.7
TANK CAPACITY (EFFECTIVE)	M ³	85.49
TYPE OF TANK	-	VERTICAL CYLINDRICAL FIXED CONE ROOF
ROOF SLOPE	-	5
DESIGN PRESSURE	-	HYDROSTATIC HEAD
OPERATING PRESSURE	-	ATMOSPHERIC
OPERATING TEMPERATURE	°C	58
SPECIFIC GRAVITY	Kg/M ³	1216
NO. OF TANK	NO.	01
DIAMETER (LD)	MM	5500
HEIGHT	MM	5500
INSIDE LINING	-	3 MM GLASS FLAKE LINING

NOZZLE SCHEDULE								
MARK	SIZE	Sch. No.	QTY	FLANGE			SERVICE	REMARKS
				RATING	FACING	STANDARD		
A-1	-	-	1	-	-	-	AGITATOR	
M-1	NB600	-	1	-	SOFF	PLATE	MANHOLE	WITH HINGE
M-2	NB800	-	1	PLATE	SOFF	PLATE	MANHOLE	WITH HINGE
N-1A/B/C/D	NB65	-	4	150	SOFF	ANSI B16.5	LIQUID INLET	
N-2A/B/C	NB100	-	3	150	SOFF	ANSI B16.5	LIQUID INLET	
N-3	NB50	-	1	150	SOFF	ANSI B16.5	LIQUID INLET	
N-4	NB65	-	1	150	SOFF	ANSI B16.5	MINIMUM FLOW	
LT-1/2/3	NB80	-	3	150	SOFF	ANSI B16.5	LEVEL TRANSMITTER	
V	NB80	-	1	150	SOFF	ANSI B16.5	VENT	
N-5	NB125	-	1	150	SOFF	ANSI B16.5	OVER FLOW	
N-6	NB125	-	1	150	SOFF	ANSI B16.5	BOTTOM DRAIN	
N-7A/B	NB80	-	2	150	SOFF	ANSI B16.5	PUMP SUCTION	



MATERIAL SPECIFICATION	
ITEM	MATERIAL
SHELL, ROOF, BASE AND BAFFLE PLATE, STRUCTURES, STAIRWAYS & PLTFs, MAN-HOLE, NOZZLE, NOZZLE FLANGES, NOZZLE REINFORCEMENT	CARBON STEEL (IS2062 OR EQUIVALENT)

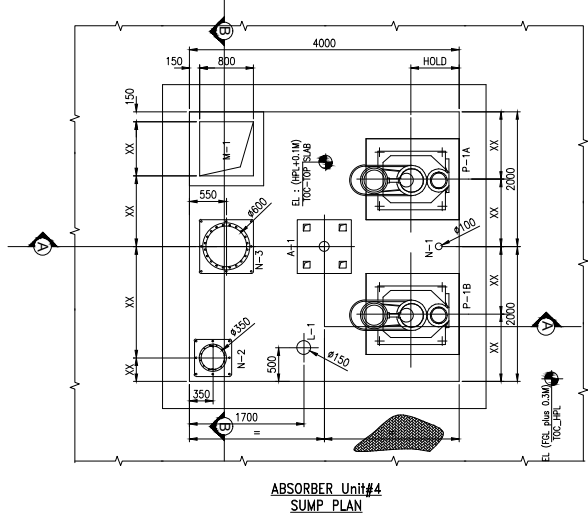


NOTES:

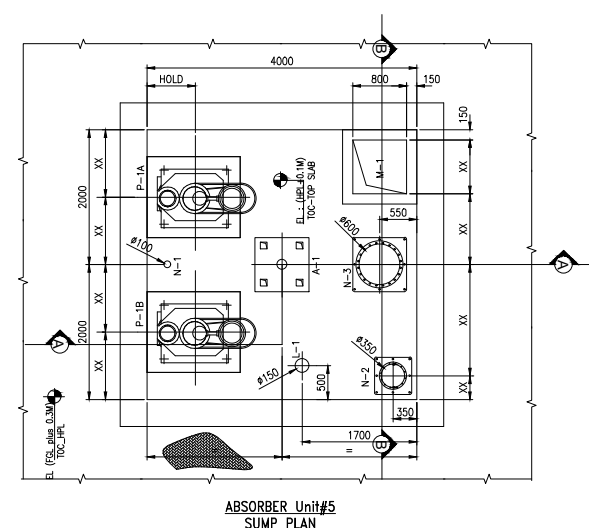
- ALL DIMENSIONS ARE IN MM, UNLESS SPECIFIED OTHERWISE.
- EL(+)-0.00 CORRESPONDS TO RL(+)-900.300.
- FOR LOCATION REFER FGD SYSTEM LAYOUT, DRG NO PY-LQ-0-M166-2001-01
- OUTSIDE NOZZLE PROJECTION IS 200MM UNLESS OTHERWISE SPECIFIED.
- NOZZLE REINFORCEMENTS SHALL BE AS PER IS 803.
- NOZZLE PROJECTIONS ARE MEASURED FROM TANK SHELL INNER TO THE FLANGE FACE AS APPLICABLE.
- ALL REINFORCEMENT PADS SHALL BE PROVIDED WITH 6MM TELLTALE HOLE.
- NOZZLE AND FLANGE DETAILS SHALL BE AS PER IS 803.
- ALL BOLT HOLES SHALL STRADDLE VERTICAL CENTERLINES ON SHELL AND RADIAL CENTERLINES ON ROOF UNLESS SPECIFIED OTHERWISE.
- ALL PROTRUSIONS, SHARP EDGES AND SPATTER, ETC. SHALL BE REMOVED FROM THE SURFACE AND ALL WELDS GRIND SMOOTH WITHOUT ANY CAVITIES AND IMPERFECTION BEFORE LINING.
- HYDRO TEST SHALL BE AS PER IS 803. LINING SHALL BE CARRIED-OUT AFTER HYDRO TEST.

** AGITATOR SHOWN ARE INDICATIVE WILL BE FINALIZED DURING DETAIL ENGINEERING.
 *** NOZZLE LOCATION SHOWN IN DRAWING ARE INDICATIVE WILL BE FINALIZED DURING DETAIL ENGINEERING.

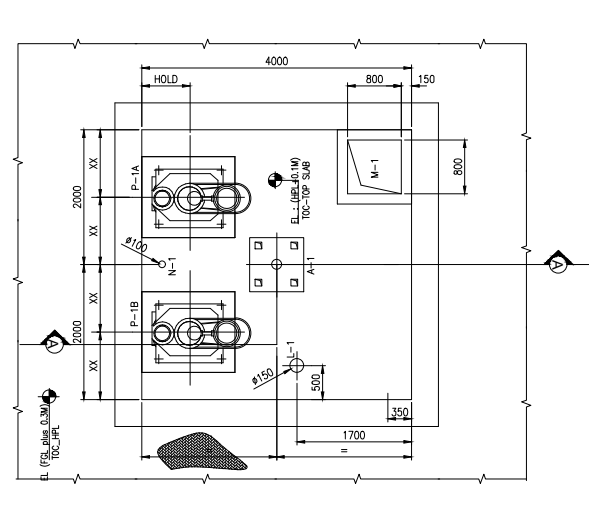
CLIENT	NATIONAL ALUMINIUM COMPANY LIMITED BHUBANESWAR, ODISHA															
CONSULTANT	M. N. DASTUR & COMPANY (P) LTD CONSULTING ENGINEERS, KOLKATA															
PROJECT	INSTALLATION OF STEAM AND POWER PLANT FOR 5th STRAM ALUMINA REFINERY EXPANSION AT DAMANJODI, ODISHA UNDER PHASE-3 EXPANSION OF NALCO COMPLEX															
SHARAT HEAVY ELECTRICALS LTD	<table border="1"> <tr> <th>NAME</th> <th>SIGN.</th> <th>DATE</th> </tr> <tr> <td>ISS</td> <td>-</td> <td>12.08.21</td> </tr> <tr> <td>CHK.</td> <td>A.K.SAMANT</td> <td>-</td> </tr> <tr> <td>APPD.</td> <td>K.B.PADHI</td> <td>-</td> </tr> <tr> <td>APPD.</td> <td>K.B.PADHI</td> <td>-</td> </tr> </table>	NAME	SIGN.	DATE	ISS	-	12.08.21	CHK.	A.K.SAMANT	-	APPD.	K.B.PADHI	-	APPD.	K.B.PADHI	-
	NAME	SIGN.	DATE													
	ISS	-	12.08.21													
CHK.	A.K.SAMANT	-														
APPD.	K.B.PADHI	-														
APPD.	K.B.PADHI	-														
<table border="1"> <tr> <th>DEPT.</th> <th>UNITS, DIMS OR SCALE</th> <th>SCALE</th> <th>WEIGHT (KG)</th> <th>REF. TO ASSY. DRG.</th> </tr> <tr> <td>450</td> <td></td> <td>NTS</td> <td></td> <td></td> </tr> </table>	DEPT.	UNITS, DIMS OR SCALE	SCALE	WEIGHT (KG)	REF. TO ASSY. DRG.	450		NTS								
DEPT.	UNITS, DIMS OR SCALE	SCALE	WEIGHT (KG)	REF. TO ASSY. DRG.												
450		NTS														
TITLE: GENERAL ARRANGEMENT OF FILTRATE WATER TANK	DRAWING NO. 0-FW-000-05128 00 REV. SH 04 OF 09															



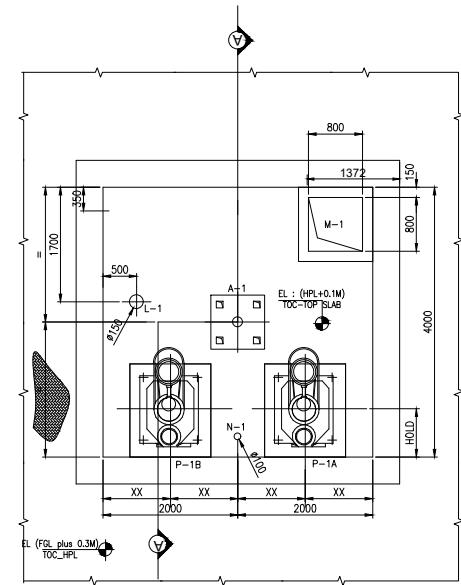
ABSORBER Unit#4
SUMP PLAN



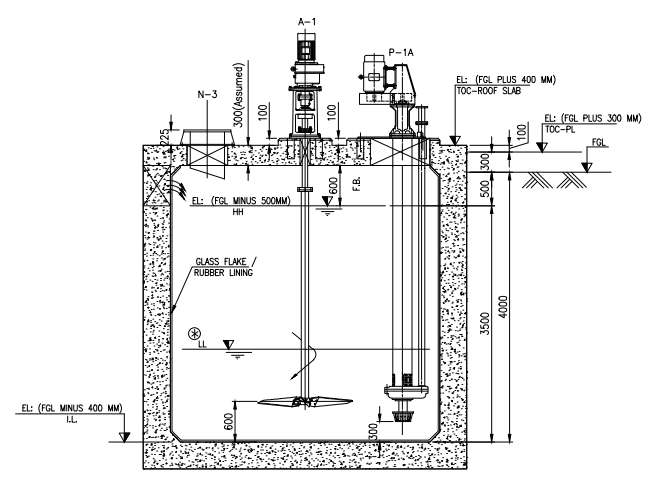
ABSORBER Unit#5
SUMP PLAN



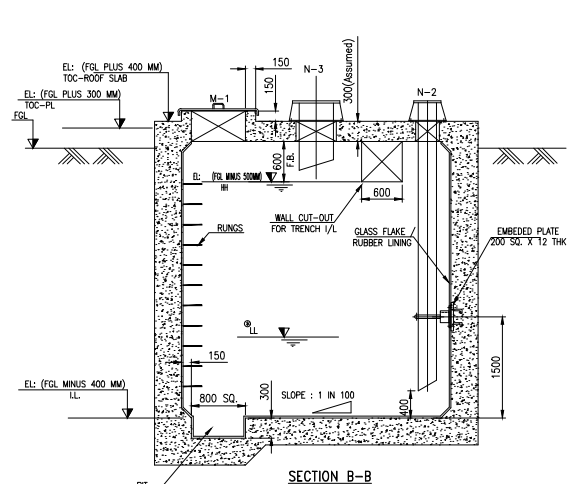
GDWS Sump



LS area Sump

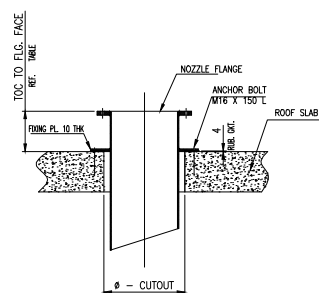


SECTION A-A



SECTION B-B

GENERAL ARRANGEMENT DRAWING OF DRAIN SUMP



TYP. NOZZLE FIXING DETAIL

MARK	Nos.	SIZE	RATING	FACING	SERVICE	TOC TO FLG. FACE	SLAB CUTOUT SIZE	REMARKS	
A-1	1	DETAILED			AGITATOR CONN.			DETAILED	
M-1	1	800			MANHOLE		800	WITH COVER	
L-1	1	3"	ASME 150 ^{LB} SO	FF	LEVEL TRANSMITTER	200	Ø150		
N-3	-	20"	500NB	-	-	-	Ø600	-	
N-2	1	10"	250NB	ASME 150 ^{LB} SO	FF	LIQUID INLET(Over flow from Absorber)	200	Ø350	EXTENDED INSIDE
N-1	1	2"	50NB	ASME 150 ^{LB} SO	FF	PUMP DRAIN	200	Ø100	
P-1	2	DETAILED			PUMP			DETAILED	

NOTES :

All dimensions are in mm. Elevation indicated is only for reference(typ).
All Manhole and Nozzle sizes are subject to changes.

LEGEND :

- FGL - FINISHED GRADED LEVEL
- FFL - FINISHED FLOOR LEVEL
- PL - PAVED LEVEL
- IL - INVERT LEVEL
- SLURRY DRAIN CHANNEL
- PAVED LEVEL

CLIENT	NATIONAL ALUMINIUM COMPANY LIMITED
CONSULTANT	M. N. DASTUR & COMPANY (P) LTD
PROJECT	INSTALLATION OF STEAM AND POWER PLANT FOR 6th STREAM ALUMINA REFINERY EXPANSION AT DAMANJODI, ODISHA UNDER PHASE-3 EXPANSION OF MAR COMPLEX
DATE	11.11.20
SCALE	1:1
DRG. NO.	0-FW-000-03413 00
REV. NO.	00

497054/2021/BAP-9762_FGD

ANNEXURE-PRICE BREAK UP FOR GLASS FLAKE LINING OF SLURRY TANKS AND SUMPS (NALCO DAMANJODI)					
Short Description	3MM GLASS FLAKE LINING FOR SLURRY TANKS AND SUMPS				
Long Description	3MM GLASS FLAKE LINING FOR SLURRY TANKS AND SUMPS AS PER SPECIFICATION FGD:GFL-TNKS REV02 AND ANNEXURE- NALCO:SLT:LINING REV00 AT SITE. SCOPE: BOTH SUPPLY AND APPLICATION.				
S.No	Item Description	Qty	Unit	Unit Price	Total Price
(i)	Supply of Glass Flake Lining material for Lining of Tanks (min 3 mm THK)	1150	SM		A
(ii)	Application Charges for Lining including Scaffolding charges, Shot Blasting , Application of Lining , Mobilization of work force & machine and all other scope given as per Specification.	1150	SM		B
MATERIAL CODE- RFW113980001	3MM VINYL ESTER BASED GLASS FLAKE LINING OF SLURRY TANKS AND SUMPS (BOTH SUPPLY & APPLICATION)	1150	SM		(A+B)