

**EMERGENCY EYE WASH & SAFETY SHOWER SHALL BE AS PER THE  
TECHNICAL SPECIFICATION - TSR:003/REV 00**

**ENCLOSURE:**

BHEL SPECIFICATION TSR:003/REV 00

**VENDOR TO PROVIDE:**

1. VENDOR QUALITY PLAN SHALL BE SUBMITTED.
2. THE VENDOR SHALL SUBMIT ALL THE SUPPORTING DOCUMENTS FOR OUR PQR REQUIREMENT.
3. ALL THE DOCUMENTS SHALL BE SUBMITTED AS PER OUR SPECIFICATION REQUIREMENT.
4. VENDOR SHALL OFFER GUARANTEE FOR THE PRODUCTS SUPPLIED FOR 18 MONTHS FROM THE DATE OF COMMISSIONING OR 24 MONTHS FROM THE DATE OF SUPPLY WHICHEVER IS EARLIER.
5. VENDOR TO FURNISH THE GA DRAWING & UNIT WEIGHT OF EMERGENCY EYE WASH AND SAFETY SHOWER AT THE TIME OF OFFER ITSELF.
6. O & M MANUAL TO BE FURNISHED AS SPECIFIED IN THE TECHNICAL SPECIFICATION.

# BHARAT HEAVY ELECTRICALS LIMITED

TIRUCHIRAPPALLI-620 014

Fuel Systems/PE (FB)



## Title Sheet

Technical Purchase Specification for

### EMERGENCY EYE WASH AND SHOWER SYSTEM

Specification No.: **TSR: 003**

Revision No.:0

<i>Rev. No.</i>	<i>Rev. Date</i>	<i>Clause</i>	<i>Description</i>	<i>Chd</i>	<i>Appd.</i>

	<i>Name</i>	<i>Signature</i>	<i>Date</i>
<i>Prepared</i>	<i>Balaji D</i>	<i>Sd.,</i>	<i>03.11.2020</i>
<i>Checked</i>	<i>Shankar Naik</i>	<i>Sd.,</i>	<i>03.11.2020</i>
<i>Approved</i>	<i>G. Saravanakumar</i>	<i>Sd.,</i>	<i>03.11.2020</i>



Specification for  
**EMERGENCY EYE WASH AND SHOWER SYSTEM**

**TSR: 003**

**Revision No.:0**

## **1 Table of Contents**

1.0	INTENT .....	3
2.0	SCOPE.....	3
3.0	REFERENCE.....	3
4.0	LOCATION OF USE.....	3
5.0	EQUIPMENT, MATERIALS AND SERVICES BY SELLER .....	3
6.0	DETAILED REQUIREMENTS OF EQUIPMENT .....	3
6.1	General.....	3
6.2	Terminal Points .....	4
6.3	Industry Reference Documents (Codes and Standards) .....	4
6.4	Noise Requirements.....	4
6.5	Operating Sequences / Duration .....	4
6.6	Instrumentation and Controls .....	5
6.7	Surface Preparation and Painting .....	5
6.8	Field Service .....	5
6.9	Spare Parts.....	5
7.0	PERFORMANCE GUARANTEES .....	5
8.0	QUALITY ASSURANCE AND QUALITY CONTROL (QA & QC) .....	5
8.1	Quality Control.....	5
8.2	Quality assurance.....	5
9.0	TECHNICAL DOCUMENTATION .....	6
10.0	DOCUMENTS TO BE FURNISHED WITH THE PROPOSAL .....	6
11.0	DOCUMENTS TO BE FURNISHED AFTER AWARD OF CONTRACT .....	6
12.0	INSPECTION.....	7
13.0	FINAL TESTS AND ACCEPTANCE .....	7
14.0	GUARANTEE .....	7
14.1	Guarantee Period.....	7
15.0	GENERAL .....	7
16.0	ATTACHMENTS AND REFERENCE DOCUMENTS .....	7
16.1	Datasheets .....	7



Specification for  
**EMERGENCY EYE WASH AND SHOWER SYSTEM**

**TSR: 003**

**Revision No.:0**

## **1.0 INTENT**

The Technical Purchase Specification is used to specify the Emergency Eye Wash and Shower system used in the Anhydrous/Aqueous Ammonia Storage Tank & handling System. This is defined by the Technical Specification and Datasheets for the Anhydrous or Aqueous Ammonia System.

## **2.0 SCOPE**

This specification defines the minimum requirements for the design, manufacture, testing, preparation for shipment and delivery of materials, engineering documentation, technical direction for construction/ installation, and start-up service for this equipment.

Equipment furnished shall be the Seller's standard proven design.

## **3.0 REFERENCE**

- a. Appendix- A, Site & Plant information
- b. Appendix- B, Datasheets of Emergency Eyewash and Safety Shower Station.
- c. Appendix- C, location of Emergency Eye wash and safety shower.

## **4.0 LOCATION OF USE**

This system shall be used in:

- a. Ammonia unloading system,
- b. Ammonia Storage tank system
- c. Ammonia Forwarding system
- d. Ammonia Injection System

## **5.0 EQUIPMENT, MATERIALS AND SERVICES BY SELLER**

The Seller's scope of supply includes, but is not necessarily limited to:

- a. Complete Emergency Eyewash and Shower Combination Stations to fulfil the proposed purpose i.e is supply tepid water.
- b. Equipment and ancillaries as defined in datasheets located in Appendix-B of this document.
- c. Special tools if any.
- d. Manuals and instructions for storage, installation, commissioning, operating and maintenance.

## **6.0 DETAILED REQUIREMENTS OF EQUIPMENT**

### **6.1 General**

Stations shall be a safety shower & eyewash combination arrangement.

- a. Safety shower and eyewash stations shall be as per the attached D&R sheet.
- b. Eyewash and safety shower stations shall have appropriate signage to assist in locating.
- c. Eyewash and safety shower stations shall include an installed local strobe light indicator activated by a local flow switch.
- d. Emergency Eyewash and Safety Shower system shall have DCS inputs activated by local flow switch unique to each station.



Specification for  
**EMERGENCY EYE WASH AND SHOWER SYSTEM**

**TSR: 003**

**Revision No.:0**

- e. Emergency Eyewash and Safety Shower system shall comply with IS 10592.
- f. System shall include Anti scald equipment to stop the flow to emergency eye wash and shower if the temperature of tepid water is above 38°C.

### **6.2 Terminal Points**

The Seller shall furnish all equipment and services necessary to connect the equipment to the Buyer's system.

Water source: Potable Water  
Water Pressure range: 3.0 kg/cm<sup>2</sup>  
Inlet water pipe connection size: 1"  
Outlet drain pipe connection size: 2"

### **6.3 Industry Reference Documents (Codes and Standards)**

At a minimum, all work performed and materials provided by the Seller must be in accordance with all applicable International codes and regulations.

The equipment will comply with the applicable portions of the following Codes and Standards. The applicable revision of each of these Codes and Standards will be the current edition with addenda or the edition adopted by the controlling jurisdiction at the time of the purchase order. In the event of a conflict between these documents and the specification, the Seller shall submit a written request for an interpretation by Buyer. In general, the most stringent requirement shall govern.

1. IS-662 Anhydrous Ammonia
2. IS-4544 Ammonia code of safety
3. IS-11132 Specification for Ammonia Valves
4. American National Standard Institute (ANSI)
5. American Society of Testing and Materials (ASTM)
6. American Society of Mechanical Engineers (ASME)
7. American Petroleum Institute (API)
8. Environmental Protection Agency (EPA)
9. International Organization for Standardization (ISO)
10. National Electrical Manufacturer's Association (NEMA)
11. National Fire Protection Agency (NFPA)
12. American Institute of Steel Construction (AISC)
13. Occupational Safety and Health Administration (OSHA)
14. IS 10592

### **6.4 Noise Requirements**

Not Applicable

### **6.5 Operating Sequences / Duration**

Emergency Eyewash and Safety Shower system and all associated equipment is expected to instantaneously and properly function 24 hours a day, 365 days a year located outdoors at a coal fired power plant.



Specification for  
**EMERGENCY EYE WASH AND SHOWER SYSTEM**

**TSR: 003**

**Revision No.:0**

**6.6 Instrumentation and Controls**

1. Instrument enclosures shall be at minimum **NEMA 4X** rated.
2. Flow Switch Contact rating shall be of 240 V, 5A AC/ 220V, 0.5A DC.

**6.7 Surface Preparation and Painting**

Shall be as per vendor standard.

**6.8 Field Service**

Vendor shall be capable of providing service either offline or online way for commissioning and erection.

**6.9 Spare Parts**

Seller shall provide a list of recommended spare parts including start-up and commissioning spares and special tools if any, and a schedule of part replacements based on the operation and service conditions specified.

**7.0 PERFORMANCE GUARANTEES**

The equipment provided by the Seller shall operate in accordance with the performance data in the datasheets included in Appendix-B. Should it be determined during this period that the equipment has failed, or is failing to achieve specified performance, the Seller shall be obligated, as a condition of guarantee, to take whatever steps are necessary and/or required by the Buyer to correct the non-performance, **all at the Seller's cost.**

The equipment shall meet all applicable code requirements so that all required inspections are passed and permits obtained. The Buyer and/or Owner may conduct Field tests during start up and after commercial operation of the installation for a period determined by **the terms and conditions of purchase.**

**8.0 QUALITY ASSURANCE AND QUALITY CONTROL (QA & QC)**

**8.1 Quality Control**

The supplier must include in the supply a proven quality control and quality assurance system that will ensure the quality of the Emergency Eyewash and Safety Shower system. The quality control system must follow **ISO 9001 guidelines.**

**8.2 Quality assurance**

The supplier shall be responsible for providing the necessary Quality Assurance and Quality Control procedures, maintaining continual surveillance and inspection activities during the entire periods of the Fabrication and Testing. Inspections report and tests to be provided to the BHEL during the fabrication period and before shipment of the Emergency Eyewash and Safety Shower system.

Vendor quality plan shall be submitted for BHEL approval.



Specification for  
**EMERGENCY EYE WASH AND SHOWER SYSTEM**

**TSR: 003**

**Revision No.:0**

## 9.0 TECHNICAL DOCUMENTATION

The following technical manuals shall be provided. One (1) copy on magnetic media (USB memory stick or CD-ROM) shall be provided thirty (30) days after issue of purchase order.

- a) Operation manual.
- b) Safety instruction.
- c) Maintenance manual.
- d) General arrangement with connections dimensioned.
- e) Repair and overhaul manual.
- f) Complete and comprehensive Parts Catalogue (including pictures if applicable) manufacturer P/N and OEM P/N.

**Note:** The above listed documents can be combined & supplied as Operation & Maintenance (O&M) Manual.

- g) Supplier shall submit a separate quoted (including prices) recommended spare parts list. The list should be cover all spare parts consumption for 3 years' operation.
- h) All spare parts list to be provided in "Excel" format. Data files in digital media shall contain the following information:
  - Material catalogue (Information as: Material catalogue number, Description, Unit of measurement, Material type...)
  - BOM (Bill of materials).

## 10.0 DOCUMENTS TO BE FURNISHED WITH THE PROPOSAL

- 10.1 Product literature and drawings in support of the offer shall be submitted with the quotation to evaluate the offer.
- 10.2 Emergency Eyewash and Safety Shower system **product catalogue**.
- 10.3 Emergency Eyewash and Safety Shower system **general arrangement drawing**.
- 10.4 The supplier shall return a signed copy of this specification at the end of each clause confirming compliance to the same. No deviation or exception from this specification shall be permitted without the written approval of BHEL. Intended deviations shall be separately listed by the vendor and supported by reasons for consideration of BHEL.
- 10.5 Operation manual.
- 10.6 Safety instruction.
- 10.7 Parts Catalogue with detailed Bill of material (BOM) and weight particulars.
- 10.8 Recommended spare parts list.
- 10.9 Water consumption

## 11.0 DOCUMENTS TO BE FURNISHED AFTER AWARD OF CONTRACT

- 11.1 Packaging procedure detailing the list of components shall be despatched individually with identification and with details of preservation and storage.
- 11.2 Emergency Eyewash and Safety Shower system - Data Sheet including drawings and design information shall be submitted to get approval from End user/owner of the boiler or by purchaser.
- 11.3 Guarantee certificate shall be furnished by the vendor.
- 11.4 Operation & Maintenance (O & M) Manual.



Specification for  
**EMERGENCY EYE WASH AND SHOWER SYSTEM**

**TSR: 003**

**Revision No.:0**

- 11.5 O & M manuals should be submitted to BHEL prior to despatch of the equipment.

## **12.0 INSPECTION**

- 12.1 All test certificates shall be furnished for buyer's reference and records.  
12.2 Emergency Eyewash and Safety Shower System Equipment shall be inspected and tested as per approved quality plan. The certificates and documents generated during inspection of above shall be furnished to BHEL.

## **13.0 FINAL TESTS AND ACCEPTANCE**

The Emergency Eyewash and Safety Shower system shall be tested in the site together with BHEL's representative to demonstrate conformance to the specification and functioning. The following tests shall be performed:

- 13.1 Checking and repairing of voyage damages.  
13.2 Visual test and Complete equipment check-up.  
13.3 Functional test.

Acceptance certificate will be issued after successful completion of the acceptance tests and submission of all relevant documentation.

## **14.0 GUARANTEE**

### **14.1 Guarantee Period**

Seller shall guarantee for trouble free operation and against defects of quality, workmanship of the product for a period of 24 months from the date of supply or 18 months from date of commissioning, whichever is earlier.

## **15.0 GENERAL**

- 15.1 The language used shall be "English only" in offer, O & M manual, Labels, Drawings etc.  
15.2 For equipment and other special requirements refer Appendix-B (Datasheets) to this specification.

## **16.0 ATTACHMENTS AND REFERENCE DOCUMENTS**

### **16.1 Datasheets**

Appendix	Description	No. of Pages	Revision Number
A	Site & Plant Information	1	00
B	Eyewash and Safety Shower D&R sheet	1	00
C	Location of Eye wash And Shower Sketch	1	00

## Appendix -A

### SITE & PLANT INFORMATION

#### 1.0 General Information

Material Code: ---

Customer Name: BHUSAWAL THERMAL POWER STATION		
Customer No: 1727		
1.01	Equipment Name: EMERGENCY EYE WASH AND SHOWER SYSTEM	
1.02	Quantity:	8 No's
1.03	Tag Number(s):	HSQ10CF101 to 108
1.04	P&ID Number:	0-SR-056-00049
1.05	Indoor/Outdoor:	Outdoor

1. Ambient Temperature (Design and guarantee of SG) : 27°C
2. Ambient Temperature (Range) : 13°C – 50°C
3. Relative Humidity : 60%
4. Height above MSL : 210 meter

<b>BHEL</b>	<b>Appendix -B</b>		
	<b>Emergency Eyewash &amp; Safety Shower Station</b>		
Bharat Heavy Electricals Ltd. (collectively "COMPANY")		Owner / MAHAGENCO	Customer Number: 1727
		Plant: BHUSAWAL 1x 660MW	<b>Datasheet</b>
<b>Confidential</b>	Data Revision Date	Unit No: 6	
See NOTICE		Location BHUSAWAL	
			<b>S.I Units</b>

NOTICE: This document and the information, design, and material contained and/or illustrated herein (hereinafter "proprietary material"), is the property of COMPANY and is submitted, lent, and furnished to recipient in strict confidence with the express understanding that the recipient shall not reproduce, copy, loan, dispose of, or disclose to anyone outside recipient's organization, directly or indirectly, or use said proprietary material for any purpose other than that for which it is furnished and submitted by COMPANY. Recipient by receiving said proprietary material agrees to these terms, not to use the proprietary material in any way injurious to the interests of COMPANY, and to return the same upon request by COMPANY.

### 1 GENERAL INFORMATION

1.01	Equipment Name:	Emergency Eyewash & Safety Shower
1.02	Quantity:	<b>8 per project</b>
1.03	Tag Number(s):	HSQ10 CF101 to 108 (flow switch tag number)
1.04	P&ID Number:	0-SR-056-00049
1.05	Indoor/Outdoor:	outdoor

### 2 DESIGN DATA

		<b>Units</b>	<b>Values</b>
2.01	Available Inlet Water Supply Temperature	°C	13 to 50
2.02	Available Inlet Water Supply Pressure	Kg/cm <sup>2</sup>	2 to 3.0
2.03	Eyewash/Shower Outlet Water Temperature	°C	13 to 50
2.04	Instantaneous Water Heater Required	Yes / No	NO
2.05	Tempering Water System Required	Yes / No	NO
2.06	Self Contained Unit	Yes / No	NO
2.07	Enclosed Environment Station Required	Yes / No	NO
2.08	Freeze Protection / Heat Trace Required	Yes / No	NO
2.09	Flow Switch Required	Yes / No	YES
2.10	Activation indicator light required	Yes / No	YES
2.11	Activation indicator alarm required	Yes / No	YES
2.12	Safety Shower & Eyewash Code Requirement	-	IS 10592
2.13	DCS Inputs Required	Yes / No	YES
2.14	Appropriate Signage Required	Yes / No	YES
2.15	Ambient Site Conditions	-	Refer to Appendix A - Site & Plant information

### 3 EQUIPMENT INFORMATION

3.01	Eyewash & Safety Shower Station Model Number	-	Vendor to fill
3.02	Materials of Construction	-	<b>SS304</b>
3.03	Freeze protection / Heat Traced Voltage(If applicable)	V / Ph / Hz	Not Applicable
3.04	Eyewash/Shower Outlet Water Temperature	°C	13 to 50
3.05	Instantaneous Water Heater Model (if applicable)	-	Not Applicable
3.06	Tempering Water System Make & Model (if applicable)	-	Not Applicable
3.07	Flow Switch Model	-	Vendor to fill
3.08	Activation indicator light model	-	Vendor to fill
3.09	Activation indicator alarm model	-	Vendor to fill
3.10	Shower Capacity	Litres / min.	Vendor to fill
3.11	Station electrical rating	NEMA 4X	IP 65

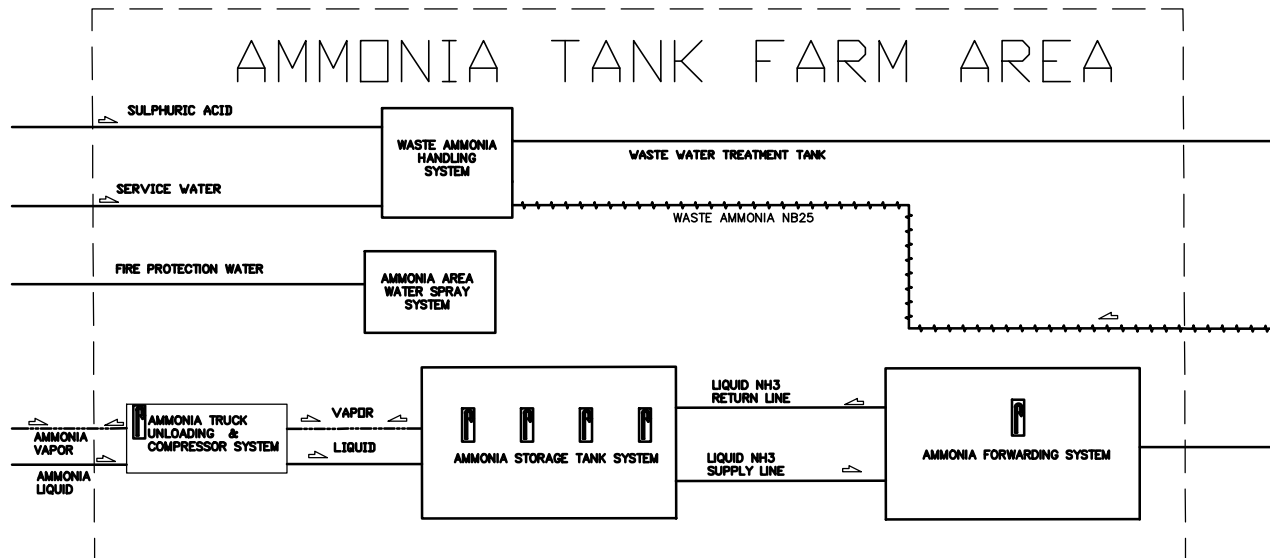
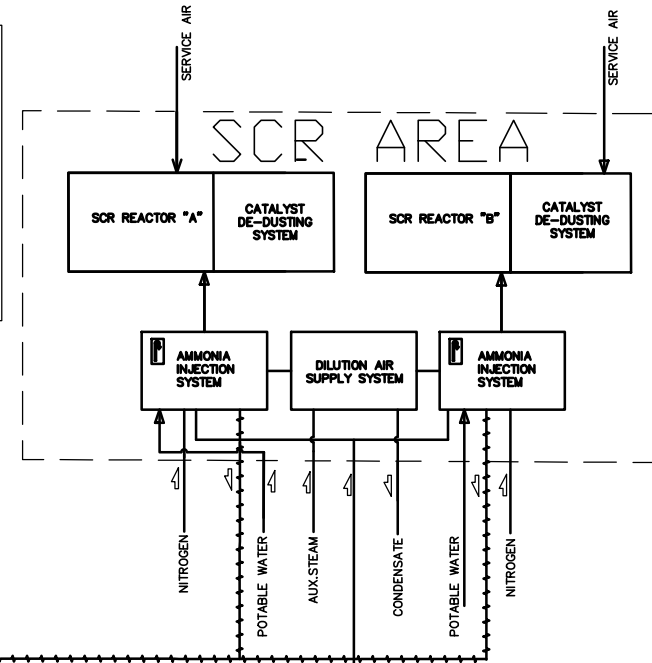
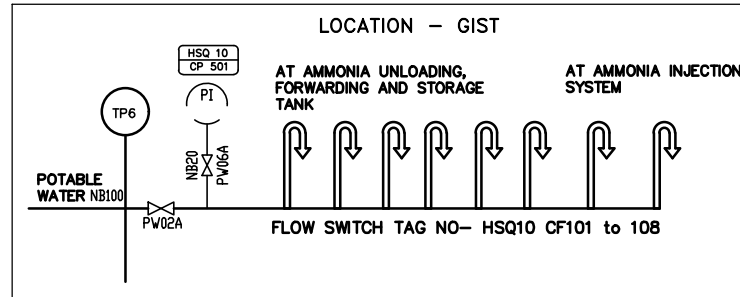
#### NOTES:

Rev	Date	Prepared by	Reviewed by	Approved by
00	29/07/2020	Balaji D	Preetam Kumar S	Shankar Naik V

# APPENDIX C - LOCATION OF EYE WASHER & SAFETY SHOWER

DETAILS- TERMINAL POINT 'TP6'

	MEDIUM	NO	NB	FLOW	PR	TEMP
1	POTABLE WATER	1	--	----	2 to 3.5	13 to 50



APPENDIX C - EXTRACT OF SCR KEY DRAWING O-SR-056-00049 SHOWING EMERGENCY EYE WASH & SAFETY SHOWER

## **Technical Pre-Qualification Requirement (PQR) for**

### **Emergency Eye Wash & Safety Shower (EEW&SS)**

1. The vendor shall be an established Emergency Eye Wash & Safety Shower (EEW&SS) supplier and having adequate Engineering, Manufacturing, testing and servicing facilities and shall furnish technical backup documents in proof for above requirements.
2. The vendor shall have experience of having supplied EEW&SS as per the technical specification for boiler/refinery/SCR/Process plants or application of similar severity. Supply reference list with details of PO, PO date, customer name.
3. The EEW&SS offered shall be from the existing regular supply range of the vendor. Vendor shall provide the product catalogue.
4. Proven track record is required. Minimum One end user certificate for the satisfactory operational performance of their product's supplied.  
(or)  
successfully executed two POs for same item, meeting the subject technical specification requirement mentioned in the enquiry.
5. In case of ordering, the Vendor shall have the responsibility for the following and same to be confirmed point wise.
  - i) Vendor should have the component replacement responsibility in case of defect / failure.
  - ii) Experts from Vendor's side shall associate in commissioning activities at site, if required.
  - iii) Vendor should ensure the product performance during erection & commissioning and ensure performance guarantee.
6. Backup document checklist to meet PQR:

<b>S. No</b>	<b>Document description</b>	<b>Check list</b>
1	Documents to meet clause(1)	<input type="checkbox"/>
2	Supply reference document (General reference list) to meet clause (2)	<input type="checkbox"/>
3	Product Catalogues to meet clause (3)	<input type="checkbox"/>
4	Min. one end user certificate (or) Two POs to meet clause (4)	<input type="checkbox"/>
5	Confirmation to clause meet clause (5)	<input type="checkbox"/>



An ISO 9001  
Company

**Bharat Heavy Electricals Limited**

(High Pressure Boiler Plant)  
Tiruchirappalli-620 014, Tamil Nadu, India  
Dept: MATERIALS MANAGEMENT/BOI

**Annexure – A- Additional Terms and Conditions for GeM Enquiry**

The terms and condition mentioned in this document are applicable in addition to the GeM General Terms and Conditions. Bidders shall furnish pointwise confirmation/details.

<b>Description of the Equipment:</b>	<b>EMERGENCY EYE WASH AND SAFETY SHOWER</b>
<b>Projects</b>	<b>BHUSAVAL PROJECT 1 x 660 MW</b>
<b>BHEL Tender No. &amp; Date</b>	
<b>Name of the firm (Bidder)</b>	:
<b>Address</b>	:
<b>Contact details</b>	<p><b><u>Contact person 1</u></b>  <b>Name:</b>  <b>Designation:</b>  <b>Office Phone:</b>  <b>Mobile:</b>  <b>e-mail:</b></p> <p><b><u>Contact person 2</u></b>  <b>Name:</b>  <b>Designation:</b>  <b>Office Phone:</b>  <b>Mobile:</b>  <b>e-mail:</b></p>

*To be filled by bidder*

<b>Sl. No.</b>	<b>Terms and conditions</b>	<b>Vendor's confirmation</b>
1 (a)	<p><b>Technical:</b>  Bidder shall comply the specification requirements as per respective catalogues. Any clarifications/deviations to the specification requirements are to be clearly indicated. Hidden deviations indicated elsewhere in the offer will not be evaluated.</p> <p>Quality Plan shall be as per our Standard SQP .</p>	
1 (b)	<p><b>Pre-qualification requirement:</b>  Offer shall be considered only if bidder is meeting Tender Prequalification requirement. Vendor to comply with Pre-Qualification requirement of the tender and submit along with their technical bid - the credentials and other documents as indicated in the PQR in the format prescribed. Otherwise their offer will get rejected.</p>	
1 (c)	<p>Inspection by BHEL/ BHEL approved TPIA/Customer.</p>	
2	<p><b>Firm Price:</b>  The quoted / finalised rates shall be Firm till execution of the supplies. Offer with PVC clause will not be considered.</p>	

3	<p><b>Delivery term:</b> The quote shall be on FOR/BHUSAWAL PROJECT SITE inclusive of Packing, forwarding, Freight also to yours account.</p> <p>Transit Insurance is under BHEL scope.</p>	
4	<p><b>TENDER FINALIZATION:</b> Tender will be finalized on total package basis through Reverse Auction in GeM</p>	
5 (a)	<p><b>Guarantee / Warranty Period:</b> 24 months from the date of supply or 18 months from date of commissioning, whichever is earlier.</p>	
5 (b)	<p><b>Repair &amp; replacements:</b> Within the guarantee period vendor has to replace / rectify the defective/ damaged items on free of cost within a reasonable time of reporting from our end.</p>	
5 (c)	<p><b>Loading Criteria:</b> <b>Guarantee / Warranty Period:</b> No Deviation is permitted. If still vendor offered any deviation on the Guarantee / warranty period, it may lead to rejection of offer.</p>	
6 (a)	<p><b>Kindly Indicate the HSN Code for all items</b></p>	
6 (b)	<p><b>Rate quoted in GeM portal should be on FOR destination basis inclusive of all taxes, freight etc. Transit Insurance is under BHEL scope. Please indicate the applicable GST %.</b></p>	
7 (a)	<p><b>Delivery Period:</b></p> <ul style="list-style-type: none"> <li>• Delivery Period shall be 90 Days from the Manufacturing clearance.</li> </ul> <p>Material shall be dispatched after obtaining dispatch clearance from BHEL.</p> <p>Delivery period mentioned anywhere else in the bid document is for indicative purpose. Delivery schedule shall be as per this clause.</p>	
7 (b)	<p><b>Document Submission:</b> In case of PO placements, required documents have to be submitted for approval within 15 days from the date of PO &amp; reply for any further clarification has to be within 4 days. Any delay beyond the above specified period will be considered during LD calculation.</p>	
8	<p>Invoice date/Bill of Lading date/Airway Bill date/Lorry way bill date/Railway Receipt date, whichever is later will be considered for LD calculation.</p>	
9	<p>Documents are to be submitted along with technical bid (Part-1)</p> <ol style="list-style-type: none"> <li>01. Covering letter</li> <li>02. Unpriced offer.</li> <li>03. Filled technical specification and BHEL datasheets.</li> <li>04. Filled BHEL Terms and condition sheet (Annexure-A)</li> <li>05. Filled in PQR along with supporting documents.</li> <li>06. GA Drawing</li> <li>07. Self-Certification as per Make In India clause</li> <li>08. MSE Certificates (if applicable)</li> </ol> <p><b>Note:</b> All the pages of documents are to be signed and sealed by authorized signatory of the company. Any query during enquiry stage</p>	

	shall be replied within two days failing which offer may be rejected as non-responsive.	
10	<p><b>Inspection and testing requirements:</b></p> <p>Inspection and testing requirements are to be carried out as per the specification and BHEL/Customer approved Drawing (All documents shall be submitted within 15 days from the date of PO for our approval), Technical spec &amp;QP and all test certificates are to be submitted in complete set.</p> <p>Inspection notice period: For TPI inspector visit to vendor works, a minimum of 3 working days' notice period.</p>	
11	Supplier shall mention their GSTN registration number in all their invoices and invoices shall be in the format as specified/prescribed under GST laws. Invoices shall necessarily contain Invoice number (in case of multiple numbering system is being followed for billing like SAP invoice no, commercial invoice no etc., then the Invoice No which is linked/uploaded in GSTN network shall be clearly indicated), item description as per PO, Quantity, Rate, Value, applicable taxes with nomenclature (like IGST, SGST, CGST & UTGST) separately, HSN/ SAC Code, etc.	
12	All invoices shall bear the HSN Code for each item separately (Harmonized System of Nomenclature)/ SAC code (Services Accounting Code).	
13	<p>Invoices will be processed only upon completion of statutory requirement and further subject to following:</p> <ul style="list-style-type: none"> <li>• Vendor declaring such invoice in Form GST ANX-1</li> <li>• Receipt of Goods or Services and Tax invoice by BHEL</li> </ul>	
14	As the continuous uploading of tax invoices in GSTN portal (in GST ANX-1) is available for all (i.e. both Small & Large) tax payers under proposed new GST Return System, all invoices raised on BHEL may be uploaded immediately in GST portal on despatch of material /rendering of services. The supplier shall ensure availability of Invoice in GST portal before submission of invoice to BHEL. Invoices will be admitted by BHEL only if the invoices are available in GSTN portal (in BHEL's GST ANX-2).	
15	In case of discrepancy in the data uploaded by the supplier in the GSTN portal or in case of any shortages or rejection in the supply, then BHEL will not be able to avail the tax credit and will notify the supplier of the same. Supplier has to rectify the data discrepancy in the GSTN portal or issue credit note or debit note (details also to be uploaded in GSTN portal) for the shortages or rejections in the supplies or additional claims, within the calendar month informed by BHEL.	
16	In cases where invoice details have been uploaded by the vendor but failed to remit the GST amount to GST Department (Form PMT-08 or Form GST RET-01 to be submitted) within stipulated time, then GST paid on the invoices pertaining to the month for which GST return not filed by the vendor will be recovered from the vendor along with the applicable interest (currently 24% p.a) and all subsequent bills of the vendor will not be processed till filing of the GST return by the vendor	
17	In case GST credit is denied to BHEL due to non-receipt or delayed receipt of goods and/ or tax invoice or expiry of timeline prescribed in GST law for availing such ITC, or any other reasons not attributable to	

	BHEL, GST amount claimed in the invoice shall be disallowed to the vendor.	
18	Where any GST liability arising on BHEL under Reverse Charge (RCM), the vendor has to submit the invoices to BHEL well within the timeline prescribed in GST Law, to enable BHEL to discharge the GST liability. If there is a delay in submission of invoice by the vendor resulting in delayed payment of GST by BHEL along with Interest, then such Interest payable or paid shall be recovered from the vendor.	
19	Under GST regime, BHEL has to discharge GST liability on LD recovered from suppliers/contracts. Hence applicable GST shall also be recoverable from suppliers/contractors on LD amount. For this Tax Invoice will be issued by BHEL indicating the respective supply invoice number.	
20	GST TDS will be deducted as per Section 51 of CGST Act 2017 and in line with Notification 50/2018 – Central Tax dated 13.09.2018. GST TDS certificate which will be generated in GST portal subsequent to vendor accepting the TDS deduction in the GST portal, will be issued to the vendor.	
21	A declaration to the effect that all invoice particulars are/were uploaded in the GSTN network/ portal & all tax liability as per GST rules and regulations have been and will be discharged, shall be mentioned in the invoice. If not mentioned in the invoice, a separate declaration shall be submitted as per the requirement of BHEL	
22	<b>MSE VENDOR:</b> <i>Udyam Registration certificate shall be submitted by MSE vendors for availing the benefits.</i>	
23	<b><u>Make in India:</u></b> The local supplier at the time of tender, bidding or solicitation shall be required to provide self-certification that the item offered meets the minimum local content and shall give details of the location (s) at which the local value addition is made. Counter offering for Make in India will be on package basis (non-splittable)	
24	<b><u>Fraud Prevention Policy</u></b> Bidder along with its associate /collaborators /sub-contractors /sub-vendors / consultants / service providers shall strictly adhere to BHEL Fraud Prevention Policy displayed on BHEL website <a href="http://www.bhel.com">http://www.bhel.com</a> and shall immediately bring to the notice of BHEL Management about any fraud or suspected fraud as soon as it comes to their notice.	
25	<b><u>PRICE IMPACT:</u></b> All the technical / commercial details given in the enquiry shall be taken care and offer shall be quoted accordingly. No price impact / implication will be accepted within the validity period.	
26	<b><u>BHEL reserve the right to inspect the item ordered at any stage at vendor's works and if found not meeting the stipulated conditions, material is liable for rejection</u></b>	
27	<b><u>Payment Term:</u></b> 100% direct EFT payment after 60 days from the date of issue of consignee receipt-cum-acceptance certificate (CRAC)	

<b>Note</b>	<ol style="list-style-type: none"><li>1. In the event of our customer order covering this tender being cancelled /placed on hold / otherwise modified, BHEL would be constrained to accordingly cancel / hold / modify the tender at any stage of execution.</li><li>2. BHEL may negotiate the L1 rate, if not meeting our budget / estimated cost. BHEL may re-float the tender opened, if L1 price is not acceptable to BHEL.</li><li>3. BHEL reserves its right to reject an offer due to unsatisfactory past performance by the respective Vendor in the execution of any contract to any BHEL project / Unit.</li><li>4. <b>Any other Techno –Commercial Terms indicated by the vendor in their offer elsewhere will be ignored. BHEL will proceed with tender evaluation as per Annexure A only.</b></li></ol>
-------------	--

Annexure-D

**SUB-DELIVERY ENQUIRY DEVIATION FORMAT**

	<b>MATERIALS MANAGEMENT / BOI SUB-DELIVERY ENQUIRY DEVIATION FORMAT</b>	
<b>Schedule of deviation to Sub-delivery Enquiry No.</b>	:	
<b>Description</b>	:	
<b>Technical Specifications Document</b>	:	<b>TSR: 003</b>
<b>Drawing Nos.</b>	:	
<b>Quality Plan</b>	:	
<b>Packing Procedure</b>	:	
<b>Document reference</b>	<b>BHEL called for</b>	<b>Firm's</b>
	<b>TSR: 003</b>	
<b>Certified that other than the above deviations, we are accepting all the other specifications and requirements in full to your Enquiry.</b>		
<b>Station :</b>		
<b>Date :</b>	<b>Signature of firm's representative</b>	<b>Firm seal</b>
<b>Note :</b>	<b>1. Deviations should be taken only in the extreme case 2. If necessary, use additional sheets with page control number</b>	

CERTIFIED THAT OTHER THAN THE ABOVE DEVIATIONS, WE ARE ACCEPTING ALL THE OTHER SPECIFICATIONS AND REQUIREMENTS IN FULL TO YOUR ENQUIRY

STATION:

DATE:

SIGNATURE OF FIRMS REPRESENTATIVE

FIRM SEAL

1. Deviations should be taken only in the extreme case.
2. If necessary, use additional sheets with page control number.

**/ On Bidder's office letter pad /**  
**Self-Declaration – ANNEXURE B**

<b>Enquiry No.</b>	
<b>Enquiry Date</b>	

In line with Government public procurement order Number P-45021/2/2017-B.E-II dated 15.06.2017, and further modified order dt. 28.05.2018 & order 04.06.2020 issued by DPIIT

I / We hereby declare that I / We are a “Local Supplier” meeting the requirement of minimum local content (.....%) defined in the above government notification for the goods against above mentioned enquiry Number.

Details of location at which local value addition will be made is as follows:

Door No.	
Street / Address 1	
Street / Address 2	
District	
State	
Country	
PIN Code	

We also understand that the false declarations will be considered as breach of Integrity and liable for action.

**For Company Name:**

**Seal:**

**Signature:**

**Date:**

**Place:**

(Please fill all the yellow color field)