

**2 X 800 MW APL RAIGARH (PH-II)
2 X 800 MW APL RAIPUR (PH-II)
2X800 MW MTEUPPL MIRZAPUR (PH-I)**

**TECHNICAL SPECIFICATION FOR
LIGHTING FIXTURES, LAMP & MISC. ITEMS
DOC. NO. PE-TS-APL/MEL-558-E001**

REVISION 0



**BHARAT HEAVY ELECTRICALS LIMITED
POWER SECTOR
PROJECT ENGINEERING MANAGEMENT
NOIDA, INDIA**



**TECHNICAL SPECIFICATION FOR
LIGHTING FIXTURES, LAMPS AND
MISCELLANEOUS ITEMS**

SPECIFICATION NO. PE-TS-APL/MEL-558-E001

VOLUME II

CONTENTS SHEET

REV. 0


DATE: 19.03.2025

SHEET 1 OF 1

CONTENTS

<u>S NO.</u>	<u>DESCRIPTION</u>	<u>NO. OF SHEETS</u>
01	SECTION - I	
	SCOPE	1
	COMPLIANCE CERTIFICATE	1
	GENERAL NOTES	2
	DATA SHEET-A	6
	ANNEXURE - A	1
	ANNEXURE - B	1
	ANNEXURE - C	1
	DATASHEET – B	1
	SUB VENDOR DIRECTORY	16
	ANNEXURE - E	1
	ANNEXURE – F (TYPICAL MOUNTING ARRANGEMENT	10
	STANDARD QUALITY PLAN	2

TOTAL NUMBER OF SHEETS (INCLUDING COVER & SEPARATOR SHEETS: 45

	TECHNICAL SPECIFICATION FOR LIGHTING FIXTURES, LAMPS AND MISCELLANEOUS ITEMS	SPECIFICATION NO. PE-TS-APL/MEL-558-E001
		VOLUME II
		DATE: 19.03.2025
		SHEET 1 OF 1
SCOPE		
SCOPE OF THIS PACKAGE COVERS THE FOLLOWING:		
1	SUPPLY INCLUDING DESIGN, ENGINEERINF & MANUFACTURING	YES
2	INSPECTION & TESTING AT MANUFACTURER WORKS (CALIBRATION/CV TEST)	YES
3	E&C	NO
4	SUPERVISION OF ERECTION & COMISSIONING	YES
5	MANDATORY SPARE	YES
6	O & M SPARE	NO
7	COMISSIONING SPARE	NO
8	PACKING	YES
9	PAINTING	NO
10	TRANSPORTATION & DELIVERY TO SITE	YES
11	LIGHTING SYSTEM DESIGN	YES



**TECHNICAL SPECIFICATION FOR
LIGHTING FIXTURES, LAMPS AND
MISCELLANEOUS ITEMS**

SPECIFICATION NO. PE-TS-APL/MEL-558-E001

VOLUME II

CONTENTS SHEET

REV. 0

DATE: 19.03.2025


SHEET 1 OF 1

COMPLIANCE CERTIFICATE

The bidder shall confirm compliance to the following by signing/ stamping this compliance certificate and furnishing same with the offer.

1. The scope of supply, technical details, construction features, design parameters etc. shall be as per technical specification & there are no exclusion/ deviation with regard to same.
2. There are no deviation with respect to specification.
3. Only those technical submittals which are specifically asked for in NIT to be submitted at tender stage shall be considered as part of offer. Any other submission, even if made, shall not be considered as part of offer.
4. Any comments/ clarifications on technical/ inspection requirements furnished as part of bidder's covering letter shall not be considered by BHEL, and bidder's offer shall be construed to be in conformance with the specification.
5. Any changes made by the bidder in the price schedule with respect to the description/ quantities from those given in BOQ-Cum-Price schedule of the specification shall not be considered (i.e. technical description & quantities as per specification shall prevail).

BIDDER'S STAMP & SIGNATURE

	TECHNICAL SPECIFICATION FOR LIGHTING FIXTURES, LAMPS AND MISCELLANEOUS ITEMS	SPECIFICATION NO. PE-TS-APL/MEL-558-E001 VOLUME II DATE: 19.03.2025 SHEET 1 OF 1
GENERAL NOTES		
1. Statutory and regulatory regulation shall be applicable as per Indian Electricity Rule, 1956 with amendment-3 Rule no. 35, 48, 49, 50, 61 & 64 for illumination & low voltage power services.		
2. Following sizes of 1100 V grade, PVC insulated, single core, stranded copper conductor wires will be used: Lighting Panel to Fixtures: 2.5 sq. mm (Cu) Lighting Panel to JB's/ Switches: 2.5 sq. mm (Cu) JB's/ switches to Fixtures: 2.5 sq. mm (Cu) Panel to First receptacles: 4.0 sq. mm (Cu) First receptacles to looping other receptacles: 4.0 sq. mm (Cu) In case of only one receptacles in ckt., Panel to receptacles: 4.0 sq. mm (Cu) Panel/ JB's to flood light fixtures: 2C x 1.5 sq. mm (Cu) Note: Wires & Cables are not in vendor's scope of supply, however vendor to show size & quantity in CLO drawings.		
3. Earthing of lighting system will be done by using of following sizes of wire / flat: Lighting Distribution Board: GS Flat 50x6 mm Lighting Panels: GS Flat 25x3 mm Lighting fixtures, receptacles, conduits, junction boxes : 14 SWG GI wire Welding receptacles: GS Flat 50x6 mm All the earthing to various equipment like LDB, lighting panels, poles (painted) , receptacles, junction boxes etc shall be provide at two point.		
4. Containers adequate for storing 100% of P.O. quantity material at site are to supplied. Vendor shall furnish suitable justification to purchaser during detailed engineering for the number and size of containers being supplied. Materials like Concrete Blocks of Paved surface required for installation and placing of container shall be made available by BHEL. Other supporting material like Rails etc. shall be part of Container only.		
5. Following items are excluded from the supply of this package: Poles, Mast, LDB, WDB, Lighting panels, Rigid conduit, and PVC Wires.		
6. Luminaires suitable for surface mounting shall also be suitable for pendant mounting. Knockouts of 20mm ET conduit fixation shall be provided for this purpose.		
7. Typical Mounting arrangement of Lighting fixtures is shown in Annexure-F, all indicated accessories required for mounting of fixtures shall be supplied along with the respective lighting fixture.		
8. Vendor shall prepare and submit Lighting design calculation, lighting layout and conduit layout drawings considering the following requirements for purchaser's approval :		
8.1 Lighting calculations for indoor areas covering details such as room dimensions (length, width, height), illumination level, maintenance factor, which includes the luminaire depreciation factor also as per IS-3646, will be considered as given below: Boiler area/ platforms 0.6 ESP area/ platforms 0.6		
8.2 Lighting calculations for outdoor areas covering average illumination level, type of luminaire, chart for illumination level at various points in the area; location (coordinates), number and height of poles; type, number (normal + emergency) and orientation of luminaires etc. Calculated values of average and minimum illumination level as obtained through computer package shall also be furnished. Dot density plots for lux level shall be furnished if available in the computer package.		
8.3 Single line diagrams of power distribution upto Lighting Panels. Separate drawing for complete lighting distribution shall also be prepared by vendor.		
8.4 Loads on each phase of LP and LDB with consideration of diversity factor(50%) for sockets.		
8.5 Layout drawings for each indoor area indicating location of luminaires, sockets, fan points, exhaust fans, LDBs and LPs. Details of type of luminaires, source of power supply (AC Normal, AC Emergency, DC Normal and DC Emergency). Bill of Material shall also be covered which shall include unit wise requirements of luminaires and other items.		

8.6 Layout drawings for each outdoor area indicating location of poles / towers, orientation of luminaires, sockets and LPs. Details of pole height / mounting height, type of luminaires, source of power supply (AC Normal, AC Emergency, DC Emergency). Bill of Material shall also be covered for various types of luminaires.
8.7 Conduit layout drawings with wiring and load distribution details as superimposed on the area layout drawings indicated above. Drawings shall include Bill of Material for conduits, wires etc.
8.8 Wiring and load distribution details for outdoor areas.
9.9 Master Bill of Material (to be submitted at regular intervals of engineering progress) including all items required for the complete lighting system viz. lighting fixtures, lamps, Lighting DBs, Welding DBs, lighting panels, conduits, PVC wires etc.
10. The vendor shall guarantee satisfactory performance of the equipment supplied under all conditions and requirement as laid down by this specification.
11. Vendor shall ensure satisfactory performance for lighting system designed by them at site.
12. Bidder shall confirm compliance with the BHEL Standard Quality Plan (enclosed with the specificaiton) without any deviations.
12. Bidder shall confirm compliance with the BHEL Standard Quality Plan (enclosed with the specificaiton) without any deviations.
13. LED modules and drivers shall be compatible to each other. The LED module driver's ratings and makes shall be as recommended by corresponding LED chip manufacturer.
14. LED Chips of CREE-USA / Nichia-Japan / Philips Lumileds-USA / OSRAM-Germany / Bridge-lux-USA / Citizen shall be used.



TECHNICAL SPECIFICATION FOR LIGHTING FIXTURES, LAMPS AND MISCELLANEOUS ITEMS

SPECIFICATION NO. PE-TS-APL/MEL-558-E001

VOLUME II

CONTENTS SHEET

REV. 0

DATE: 19.03.2025

SHEET 1 OF 6

DATA SHEET –A

S. No.	Description	Unit	Value
1.0	SYSTEM DESIGN DATA		
1.1	Design ambient	⁰ C	50
1.2	AC Supply		
a)	Rated voltage	V	415
b)	Rated frequency	Hz	50
c)	Voltage variation (permissible)	%	+10% to -10%
d)	Frequency variation (permissible)	%	+3% to -5%
e)	Combined voltage & frequency variation (sum of absolutes permissible)	%	10%
f)	System fault level & duration	kA, sec.	50kA for 1 sec.
1.3	DC Supply		
a)	Rated voltage	V	220
b)	Voltage variation (permissible)	%	+10% to -15%
c)	System fault level & duration	kA, sec.	25kA for 1 sec.
B.	DESIGN CODES & STANDARDS		
1	APPLICABLE STANDARDS		a) IS 3646 Code of practice for interior illumination. b) IS 6665 Code of practice for industrial lighting. c) IS 1944 Code of practice for lighting of public thoroughfare. d) IS 10322 Luminaires. e) IS 16101 General Lighting. LEDs & LED Modules Terms and definitions. f) IS 16102-1 Self-Ballasted LED lamps for General Lighting Services: Safety requirement. g) IS 16102-2 Self-Ballasted LED lamps for General Lighting Services: Performance requirement h) IS 16103-1 LED modules for General lighting safety requirements. i) IS 15885-2 Lamp Control gear. j) IS 16104 A.C. or D.C. supplied Control gear for LED modules



TECHNICAL SPECIFICATION FOR LIGHTING FIXTURES, LAMPS AND MISCELLANEOUS ITEMS

SPECIFICATION NO. PE-TS-APL/MEL-558-E001
VOLUME II
CONTENTS SHEET
REV. 0
DATE: 19.03.2025
SHEET 2 OF 6

		k) IS 16105 Method of measurement of Lumen maintenance of solid state (LED) sources l) IS 16106 Method of electric and photometric measurement of solid state (LED) products m) IS 16107 Luminaires performance n) IS 1293 Plugs and socket outlets of rated voltage upto and including 250 volts and rated current upto and including 16 amperes o) IS 4160 Interlocking switch socket outlet p) IS 374 Electric ceiling type fans and regulators q) IS 2629 Recommended practice for hot dip galvanising of iron & steel r) IS 2603 Method of testing uniformity of coating on zinc coated articles s) IS 3480 Flexible steel conduits for electrical wiring t) IS: 3696 Scaffolds & ladders - Code of safety u) IS: 4571 Aluminium extension ladders	
2.0	SCOPE OF SYSTEM DESIGN ENGINEERING		Included in vendor's scope
3.0	Lighting Concept		
3.1	Types of supplies considered (other than AC Normal)		
a)	AC emergency		Yes
b)	DC emergency		Yes
4.0	LUMINAIRES, LAMPS & ACCESSORIES		
4.1	Degree of protection for drip proof luminaires		All the fixtures shall be weatherproof type with DOP IP-65.
4.2	Type of LED Lamps		Cool Daylight
5.0	Junction Box		Provided with four (4) way stud type terminals for terminating upto 2 nos. 2.5 mm ² copper wire on each terminal, suitable for outdoor Installations.
a)	Enclosure material		Sheet Steel
b)	Enclosure thickness	mm	3



TECHNICAL SPECIFICATION FOR LIGHTING FIXTURES, LAMPS AND MISCELLANEOUS ITEMS

SPECIFICATION NO. PE-TS-APL/MEL-558-E001

VOLUME II

CONTENTS SHEET

REV. 0

DATE: 19.03.2025

SHEET 3 OF 6

c)	Degree of protection		IP-65
6.0	Industrial/Welding Receptacle		
a)	Enclosure material		MS sheet & hot dip galvanised
b)	Enclosure thickness	mm	2mm (min) / 2.5mm (min) / 2mm (min) respectively.
c)	Surface treatment		Galvanized
d)	Process		Hot dip
	Weight of zinc	g/m ²	460 gm / mm ² (65 microns)
e)	Degree of protection		IP-65
f)	other details	<p>Industrial (20A) Receptacle:</p> <p>(i) 20A, 240V, 1-phase, 2 pole, 3-pin (third pin scrapping earth) porcelain, metal clad socket with a metallic cover tied to it.</p> <p>(ii) Rotary, heavy duty 20A switch conforming to applicable standard.</p> <p>(iii) Shrouded, die-cast aluminium plug.</p> <p>(iv) It shall be combined interlocked weather proof industrial unit.</p> <p>(v) Mechanical interlock shall be provided as follows:</p> <ul style="list-style-type: none"> • Switch can be put ON only when plug is fully engaged. • Plug can be withdrawn only when switch is in OFF position. • Cover can be opened only when switch is in OFF position. <p>(vi) The arrangement should ensure that water does not enter the plug when socket is ON.</p> <p>(vii) Loop-in loop-out terminals shall be provided inside the box suitable for 4 mm² Cu wire.</p> <p>Welding (63A) Receptacle:</p> <p>(i) 63A, 415V, 3-phase-neutral earth, metal clad socket with cover with 4P RCCB and 4P MCB will be provided</p> <p>(ii) Rotary, heavy duty 63A switch conforming to applicable standard.</p> <p>(iii) Shrouded, die-cast aluminium plug</p> <p>(iv) It shall be combined, interlocked weather</p>	



**TECHNICAL SPECIFICATION FOR
LIGHTING FIXTURES, LAMPS AND
MISCELLANEOUS ITEMS**

SPECIFICATION NO. PE-TS-APL/MEL-558-E001

VOLUME II

CONTENTS SHEET

REV. 0

DATE: 19.03.2025

SHEET 4 OF 6

		<p>proof industrial unit. (v) Mechanical interlock shall be same as that are applicable for RA type receptacles (vi) The receptacle boxes shall be suitable for entry and exit of 3.5CX70 mm² (vii) Al conductor PVC cable and loop-in loop-out terminals for the same shall be provided such that not more than one core is terminated at one terminal. Removable, undrilled cable gland plate shall be provided. Tinned copper lugs and double compression cable glands shall also be supplied by the bidder.</p>	
7.0	Conduit (Flexible)		
a)	Type		Electrogalvanized PVC coated conduits
b)	Size	mm	20 mm dia
c)	Standard length	m	25 to 50
8.0	Cable Glands		By vendor for all incoming and outgoing cables
a)	Type		Double compression
b)	Material		Brass
c)	Nickel Plating provided		Yes
d)	Flameproof glands with flameproof equipment		Yes
9.0	Cable Lugs		By vendor for all incoming and outgoing cables
a)	Type		Crimping type/ ring type
b)	Material		Tinned copper
10.0	24V AC Supply system		
		<p>Each 24V AC supply module will have one no. dry type two winding, 1 phase transformer and necessary terminals for incoming and outgoing connections. The 240V terminals of 24V AC supply module will be fed from AC emergency lighting panels (ACELP). Details of 24V supply modules shall be as given below:</p> <p>Module type: Portable type/ Fixed type Transformer rating: 500VA Transformer voltage ratio: 240/ 24 Volt</p>	



TECHNICAL SPECIFICATION FOR LIGHTING FIXTURES, LAMPS AND MISCELLANEOUS ITEMS

SPECIFICATION NO. PE-TS-APL/MEL-558-E001

VOLUME II

CONTENTS SHEET

REV. 0

DATE: 19.03.2025

SHEET 5 OF 6

		<p>Primary side isolation: DP MCB with HRC fuse Isolator rating: 15A HRC fuse rating: 5A Secondary side isolation: DP MCB with HRC fuse Isolator rating: 5A HRC fuse rating: 15A</p> <p>Fixed type 24V supply modules shall be provided in following areas:</p> <p>Boiler/SCR area: Near inspection manholes on boiler platforms and boiler drum ESP area: Near inspection manholes</p> <p>Suitable numbers of 24V portable halogen lamp unit along with flexible copper cable shall also be supplied as per details below:</p> <p>Lamp wattage: 40 W Cable size: 2.5 sq. mm Cable length: 20 meter</p>
11.0	Ladder	For the maintenance of lighting fixtures, 2 no. free standing adjustable aluminium ladder, adjustable from 05M to 10M shall be provided.
12.0	PACKING	
1	PACKING	<p>a. The material shall be packed to ensure protection against damage during transit, storage for prolonged periods and handling.</p> <p>b. Lighting Fixtures, Lamps, Receptacles, Switchboards, 24V Supply modules, 24V sockets, Junction Boxes shall be clean and dry prior to packaging.</p> <p>c. All items specified at sl. No.2 above shall be supplied in packed cartons. The tapes used for packing shall not bleed, leave residue, or damage the item when removed.</p> <p>d. Fixtures & other lighting material shall be wrapped in weather proof material such as polythene sheets, air bubble sheets/ thermocool etc. The lighting fixtures shall be placed in a corrugated paperboard/ fibreboard container/ mono carton.</p> <p>e. The mono cartons shall be wrapped or bagged or tied in place in master cartons. The master carton shall be taped and then wrapped with cushioning material.</p>



**TECHNICAL SPECIFICATION FOR
LIGHTING FIXTURES, LAMPS AND
MISCELLANEOUS ITEMS**

SPECIFICATION NO. PE-TS-APL/MEL-558-E001

VOLUME II


CONTENTS SHEET


REV. 0


DATE: 19.03.2025


SHEET 6 OF 6

		<p>f. The dimensions of cartons shall be as per manufacturer's recommendations.</p> <p>g. For items like step ladder, wheel mounted ladder and flexible conduits, packing shall be as per manufacturer standard.</p> <p>h. Containers adequate for storing 100% of P.O. quantity material at site are to supplied. Vendor shall furnish suitable justification to purchaser during detailed engineering for the number and size of containers being supplied.</p>
--	--	---

	TECHNICAL SPECIFICATION FOR LIGHTING FIXTURES, LAMPS AND MISCELLANEOUS ITEMS	SPECIFICATION NO. PE-TS-APL/MEL-558-E001	
		VOLUME II	
		DATE: 19.03.2025	
		SHEET 1 OF 1	
ANNEXURE - A			
S.NO.	LOCATION	AVERAGE ILLUMINATION LEVEL (LUX)	TYPE OF FIXTURE
1	AC LIGHTING		
(i)	Boiler platforms including SCR	100	LED well glass fixtures
(ii)	Corridors, Walkways, stairs	100	LED luminaire
(iii)	ESP platforms	100	LED well glass fixtures
2	DC LIGHTING At strategic locations in Boiler & ESP platforms for safe exit	-	LED Industrial Bulkhead

	TECHNICAL SPECIFICATION FOR LIGHTING FIXTURES, LAMPS AND MISCELLANEOUS ITEMS					SPECIFICATION NO. PE-TS-APL/MEL-558-E001	
						VOLUME II	
						DATE: 19.03.2025	
						SHEET 1 OF 1	
ANNEXURE - B							
LIGHTING & LV POWER SERVICES IN DIFFERENT AREAS							
S.NO.	AREA	.ACN	ACE	DCE	20 A SOCKET	63 A SOCKET	
1	Boiler Platforms	Y (80%)	Y (20%)	Y	Y	Y	
2	ESP Platforms	Y (80%)	Y (20%)	Y	Y	Y	
	LEGEND:						
	.ACN	AC NORMAL LIGHTING					
	ACE	AC EMERGENCY LIGHTING					
	DCE	DC EMERGENCY LIGHTING					
	Y	YES					

	TECHNICAL SPECIFICATION FOR LIGHTING FIXTURES, LAMPS AND MISCELLANEOUS ITEMS		SPECIFICATION NO. PE-TS-APL/MEL-558-E001	
			VOLUME II	
			DATE: 19.03.2025	
			SHEET 1 OF 1	
DATASHEET - B				
(Bidder to fill details of luminaires as per parameters mentioned below and furnish Data Sheet – B along with technical offer)				
S.NO.	DESCRIPTION	LUMINAIRE MAKE AND MODEL	MEASURED ELECTRICAL INPUT POWER	TOTAL LUMINOUS FLUX (LUMEN) OF LUMINAIRE
	MAIN SUPPLY ITEMS		(W) MAX. VALUE	MIN. VALUE
1	Luminaire Type LED FC34			
2	Luminaire Type LED SW41			
3	Luminaire Type LED SW42			
4	Luminaire Type LED SS62			
5	Luminaire Type LED SS63			

	TECHNICAL SPECIFICATION FOR LIGHTING FIXTURES, LAMPS AND MISCELLANEOUS ITEMS		SPECIFICATION NO. PE-TS-APL/MEL-558-E001	
			VOLUME II	
			DATE: 19.03.2025	
			SHEET 1 OF 1	
ANNEXURE - C				
TECHNICAL DETAILS OF LIGHTING FIXTURES				
S.NO.	Type of Luminaire	Description	Total Luminous Flux (Lumen) of Luminaire – Min. Value	Measured Electrical Input Power (Watt) of Luminaire – Max. Value
1	FC34 (LED)	Well glass, dust proof type LED fixture having integral driver. Fixture shall operate on 220V DC input supply.	1260	14
2	SW41 (LED)	Well glass, Dust proof LED fixture with integral driver	4500	50
3	SW42 (LED)	Well glass, Dust proof LED fixture with integral driver	7200	80
4	SS62 (LED)	Street light LED fixture	10080	112
5	SS63 (LED)	Street light LED fixture	16920	160

ITEM CODE	ITEM/SERVICE DESCRIPTION	SL NO.	VENDOR CODE	VENDOR NAME	ADDRESS	PHONE	REMARKS
ES1	AC CONTACTORS	1	S01	SIEMENS	RC-IN I S NR DEL AREA, JIL BUILDING, TOWER-B, PLOT NO. 78, SECTOR 18, GURGAON-122015, INDIA	0124-2842000, 9873424331 amit.bhadoria@siemens.com	
	AC CONTACTORS	2	A35	GE-POWER	KAMAK TOWER, 3RD FLOOR, PLOT NO. 12-A, TVK INDUSTRIAL ESTATE, EKKADUTHANGAL, GUINDY, CHENNAI-600032	044-49681447	
	AC CONTACTORS	3	E1144	TELEMECHANIQUE/ SCHNEIDER ELECTRIC INDIA PVT. LTD.	9TH FLOOR, BLDG. NO.10, TOWER-C, DLF CYBER CITY, PH-II, GURGAON-122002	0124-3940400	TAKEN OVER BY SCHNEIDER
	AC CONTACTORS	4	L01	L&T	32, SHIVAJI MARG, P.O. BOX- 6223, NEW DELHI-110015	011-41419554/59	
	AC CONTACTORS	5	B04	BCH	20/4, MATHURA ROAD, FARIDABAD, HARYANA-121006	0129-4293000	
ES2	AC LOAD BREAK SWITCH	1	A35	GE-POWER	KAMAK TOWER, 3RD FLOOR, PLOT NO. 12-A, TVK INDUSTRIAL ESTATE, EKKADUTHANGAL, GUINDY, CHENNAI-600032	044-49681447	
	AC LOAD BREAK SWITCH	2	L01	L&T	32, SHIVAJI MARG, P.O. BOX- 6223, NEW DELHI-110015	011-41419554/59	
	AC LOAD BREAK SWITCH	3	S01	SIEMENS	RC-IN I S NR DEL AREA, JIL BUILDING, TOWER-B, PLOT NO. 78, SECTOR 18, GURGAON-122015, INDIA	0124-2842000, 9873424331 amit.bhadoria@siemens.com	
	AC LOAD BREAK SWITCH	4	E1076	KAYCEE	KAYCEE INDUSTRIES LTD., C/O-CMS COMPUTERS LTD., 35A, REAR BLDG., KILOKARI, NEW DELHI-110014	Rajiv Sharma-9312004687	
	AC LOAD BREAK SWITCH	5	C01	C&S ELECTRIC LTD.	222, OKHLA IND. ESTATE, PH-III, NEW DELHI-110020	011-3088 7520-29	
ES3	AC MCCB	1	C01	C&S ELECTRIC LTD.	222, OKHLA IND. ESTATE, PH-III, NEW DELHI-110020	011-3088 7520-29	
	AC MCCB	2	S03	SCHNEIDER ELECTRIC INDIA PVT. LTD.	9TH FLOOR, BLDG. NO. 10, TOWER-C, DLF CYBER CITY, PH-II, GURGAON-122002	0124-3940400	
	AC MCCB	3	S01	SIEMENS	RC-IN I S NR DEL AREA, JIL BUILDING, TOWER-B, PLOT NO. 78, SECTOR 18, GURGAON-122015, INDIA	0124-2842000, 9873424331 amit.bhadoria@siemens.com	
	AC MCCB	4	A35	GE-POWER	KAMAK TOWER, 3RD FLOOR, PLOT NO. 12-A, TVK INDUSTRIAL ESTATE, EKKADUTHANGAL, GUINDY, CHENNAI-600032	044-49681447	
	AC MCCB	5	L01	L&T	32, SHIVAJI MARG, P.O. BOX- 6223, NEW DELHI-110015	011-41419554/59	
	AC MCCB	6	C02	CROMPTON GREAVES	RAIL TRANSPORTATION SYSTEMS,VANDANA BUILDING, 11, TOLSTOY MARG, TOLSTOY MARG, NEW DELHI, DL 110001	011 3041 6300	
ES4	ACDB/ DCDB DRAWOUT TYPE	1	EC05	ELECTRO CONTROLS & DEVICES	M/S ELECTRO CONTROLS & DEVICES, F-41, SITE-C, SURAJPUR INDUSTRIAL AREA GREATER NOIDA UTTAR PRADESH :201308	Mr. Sanjay Sharma (Chief Promoter) 0120-2569487, 2560100,2560300	
	ACDB/ DCDB DRAWOUT TYPE	2	KM1	KMG ATOZ SYSTEMS	C-49, SECTOR-81-NOIDA-201305	120-4207920, 08527897328	
	ACDB/ DCDB DRAWOUT TYPE	3	E1019	ASIATIC	A-58 NARAINA IND. AREA, PHASE-I, NEW DELHI 110028	011 - 25796330, 25796617	
	ACDB/ DCDB DRAWOUT TYPE	4	E05	UNILEC ENGINEERS PVT. LTD.	BEHRAMPUR INDUSTRIAL AREA, BEGAMPUR KHATOLA ROAD, GURGAON-122001	0124-4030247,248, 4559700, 9911087173	
	ACDB/ DCDB DRAWOUT TYPE	5	C01	C&S ELECTRIC LTD.	222, OKHLA IND. ESTATE, PH-III, NEW DELHI-110020	011-3088 7520-29	
	ACDB/ DCDB DRAWOUT TYPE	6	L01	L&T	32, SHIVAJI MARG, P.O. BOX- 6223, NEW DELHI-110015	011-41419554/59	
	ACDB/ DCDB DRAWOUT TYPE	7	A35	GE-POWER	KAMAK TOWER, 3RD FLOOR, PLOT NO. 12-A, TVK INDUSTRIAL ESTATE, EKKADUTHANGAL, GUINDY, CHENNAI-600032	044-49681447	
	ACDB/ DCDB DRAWOUT TYPE	8	S01	SIEMENS	RC-IN I S NR DEL AREA, JIL BUILDING, TOWER-B, PLOT NO. 78, SECTOR 18, GURGAON-122015, INDIA	0124-2842000, 9873424331 amit.bhadoria@siemens.com	
ES5	ACDB/ DCDB FIXED TYPE	1	EC05	ELECTRO CONTROLS & DEVICES	M/S ELECTRO CONTROLS & DEVICES, F-41, SITE-C, SURAJPUR INDUSTRIAL AREA GREATER NOIDA UTTAR PRADESH :201309	Mr. Sanjay Sharma (Chief Promoter) 0120-2569487, 2560100,2560300	
	ACDB/ DCDB FIXED TYPE	2	JO1	JASPER ENGINEERS PVT. LTD.	A-23, SECTOR - 8, NOIDA-201301	0120-4033520/533	
	ACDB/ DCDB FIXED TYPE	3	JCO1	JACKSON ENGINEERS	A-43, HOSEIYR COMPLEX, OPPOSITE NSEZ, NOIDA-201305	0120-4302600, 2568923,27	
	ACDB/ DCDB FIXED TYPE	4	S02	SPACEAGE SWITCHGEARS LTD.	68 & 13-A INDUSTRIAL DEVELOPMENT COLONY, MEHRAULI ROAD GURGAON, HARYANA-122001	0124-2302711, 4085091	
	ACDB/ DCDB FIXED TYPE	5	KM1	KMG ATOZ SYSTEMS	C-49, SECTOR-81-NOIDA-201305	120-4207920, 08527897328	
	ACDB/ DCDB FIXED TYPE	6	E1019	ASIATIC	A-58 NARAINA IND. AREA, PHASE-I, NEW DELHI 110028	011 - 25796330, 25796617	
	ACDB/ DCDB FIXED TYPE	7	E05	UNILEC ENGINEERS PVT. LTD.	BEHRAMPUR INDUSTRIAL AREA, BEGAMPUR KHATOLA ROAD, GURGAON-122001	0124-4030247,248, 4559700, 9911087173	
	ACDB/ DCDB FIXED TYPE	8	C01	C&S ELECTRIC LTD.	222, OKHLA IND. ESTATE, PH-III, NEW DELHI-110020	011-3088 7520-29	
	ACDB/ DCDB FIXED TYPE	9	E1210	ENPRO ENGG.	NO.995P, DIAMOND PLAZA, 2ND FLOOR, 12TH MAIN ROAD, ANNA NAGAR, CHENNAI-40	044 – 42611526 / 42170338 / 26262716	
	ACDB/ DCDB FIXED TYPE	10	A01	ASSOCIATED SWGR & PROJ. LTD.	C-10, UPSIDC, INDUSTRIAL AREA, SITE-IV, KASNA ROAD, GREATER NOIDA-201306	0120-4294618,19,20 Asplho@gmail.com	
	ACDB/ DCDB FIXED TYPE	11	B04	BCH	20/4, MATHURA ROAD, FARIDABAD, HARYANA-121006	0129-4293000	
	ACDB/ DCDB FIXED TYPE	12	E1043	ECS PRIVATE LTD	7/47, Site 2, Upsidc Ind Area, Loni Road, MOHAN Nagar, Ghaziabad, Uttar Pradesh 201007	098 10 217990	
	ACDB/ DCDB FIXED TYPE	13	L01	L&T	32, SHIVAJI MARG, P.O. BOX- 6223, NEW DELHI-110015	011-41419554/59	
	ACDB/ DCDB FIXED TYPE	14	A35	GE-POWER	KAMAK TOWER, 3RD FLOOR, PLOT NO. 12-A, TVK INDUSTRIAL ESTATE, EKKADUTHANGAL, GUINDY, CHENNAI-600032	044-49681447	

ITEM CODE	ITEM/SERVICE DESCRIPTION	SL NO.	VENDOR CODE	VENDOR NAME	ADDRESS	PHONE	REMARKS
	ACDB/ DCDB FIXED TYPE	15	S01	SIEMENS	RC-IN I S NR DEL AREA, JIL BUILDING, TOWER-B, PLOT NO. 78, SECTOR 18, GURGAON-122015, INDIA	0124-2842000, 9873424331 amit.bhadauria@siemens.com	
	ACDB/ DCDB FIXED TYPE	16	E1080	KHOKHAR ELECT. PVT LTD.	C-44, SEC-63, NOIDA-201307	120- 654 5452	
	ACDB/ DCDB FIXED TYPE	17	VC01	VIDHYUT CONTROLS (INDIA) PVT. LTD.	M/S VIDHYUT CONTROL (I) PVT.LTD. D-12 & 13, SECTOR-17,KAVI NAGAR IND.LAREA,GHAZIABAD – 201002 (DELHI NCR) U.P. INDIA	0120-4186400, 0120-4186423, 8527005590(DK GUPTA)	
E56	AIR CIRCUIT BREAKER	1	L01	L&T	32, SHIVAJI MARG, P.O. BOX- 6223, NEW DELHI-110015	011-41419554/59	
	AIR CIRCUIT BREAKER	2	S01	SIEMENS	RC-IN I S NR DEL AREA, JIL BUILDING, TOWER-B, PLOT NO. 78, SECTOR 18, GURGAON-122015, INDIA	0124-2842000, 9873424331 amit.bhadauria@siemens.com	
	AIR CIRCUIT BREAKER	3	A35	GE-POWER	KAMAK TOWER, 3RD FLOOR, PLOT NO. 12-A, TVK INDUSTRIAL ESTATE, EKKADUTHANGAL, GUINDY, CHENNAI-600032	044-49681447	
	AIR CIRCUIT BREAKER	4	S03	SCHNEIDER ELECTRIC INDIA PVT. LTD.	9TH FLOOR, BLDG. NO.10, TOWER-C, DLF CYBER CITY, PH-II, GURGAON-122002	0124-3940400	
	AIR CIRCUIT BREAKER	5	C01	C&S ELECTRIC LTD.	222, OKHLA IND. ESTATE, PH-III, NEW DELHI-110020	011-3088 7520-29	
E57	AUXILIARY RELAYS	1	A24	ABB	14, MATHURA ROAD, FARIDABAD, HARYANA-121003	0129-2567580, 09871799449	
	AUXILIARY RELAYS	2	G01	ALSTOM LTD	A-7, SEC-65, NOIDA	0120-479 0000	
	AUXILIARY RELAYS	3	E1075	JYOTI LTD.	JYOTI LIMITED, E&CS DIVISION,3/15, BIDC, GORWA,VADODARA - 390 016, E-MAIL ID: ECS@JYOTI.COM	Ph. No.:+91-265-2281214 , Fax No.:+91-265-2281214	
	AUXILIARY RELAYS	4	E1099	OEN INDIA LTD	29/1479, VYTILLA, COCHIN - 682 019 KERALA, INDIA	Phone : +91 484 2301132, 2303709 Fax : +91 484 2302287, 2302221 sales@oenindia.com	
	AUXILIARY RELAYS	5	S01	SIEMENS	RC-IN I S NR DEL AREA, JIL BUILDING, TOWER-B, PLOT NO. 78, SECTOR 18, GURGAON-122015, INDIA	0124-2842000, 9873424331 amit.bhadauria@siemens.com	
E58	BIMETAL RELAYS	1	L01	L&T	32, SHIVAJI MARG, P.O. BOX- 6223, NEW DELHI-110015	011-41419554/59	
	BIMETAL RELAYS	2	A35	GE-POWER	KAMAK TOWER, 3RD FLOOR, PLOT NO. 12-A, TVK INDUSTRIAL ESTATE, EKKADUTHANGAL, GUINDY, CHENNAI-600032	044-49681447	
	BIMETAL RELAYS	3	S01	SIEMENS	RC-IN I S NR DEL AREA, JIL BUILDING, TOWER-B, PLOT NO. 78, SECTOR 18, GURGAON-122015, INDIA	0124-2842000, 9873424331 amit.bhadauria@siemens.com	
	BIMETAL RELAYS	4	E1144	TELEMECHANIQUE/ SCHNEIDER ELECTRIC INDIA PVT. LTD.	9TH FLOOR, BLDG. NO. 10, TOWER-C, DLF CYBER CITY, PH-II, GURGAON-122002	0124-3940400	TAKEN OVER BY SCHNEIDER
E510	CABLE CLAMPS & CABLE TIES	1	E1045	ELECTROMAC IND.CORPN.	27/28 AF,NEW EMPIRE IND.ESTT., R.KRISHNA MANDIR RD.JB NGR ,ANDHERI(E), MUMBAI-400059	91-22-28324829 / 66919034/ Mr. Devang Patel/ 91-9867074600 devang@electromacglands.com	
	CABLE CLAMPS & CABLE TIES	2	I01	INCAB	HARE STREET,KOLKATA,WEST BENGAL-700001	91-33-2480161/62/63/64 Fax : 91-33-2485766	
	CABLE CLAMPS & CABLE TIES	3	N05	NOVOFLEX MARKETING PVT. LTD.	RAIKVA' - 5TH FLOOR, UNIT-6 3A, RAM MOHAN MULLICK GARDEN LANE KOLKATA - 700 010	Phone: +91 33 2372 0088 Email: sales@novoflex.co.in, novoflexcal@vsnl.net	
E511	CABLE GLANDS	1	E1201	ALLIED TRADERS & EXPORTERS	C-124 A, SECTOR-2, NOIDA -201 301, UTTAR PRADESH, INDIA	Mr. Vijay Mohan Sood +(91)-(120)-2525694 +(91)-(120)-3052594 +(91)-(11)-23287156 vijay_mohansood@yahoo.com	
	CABLE GLANDS	2	E1017	ARUP ENGG & FOUNDARY WORKS	391/119,PRINCE ANWAR SHAH ROAD, CALCUTTA-700068	033 2473 0850	
	CABLE GLANDS	3	E1206	BALIGA LIGHTING EOPT.PVT.LTD.	63A,CP RAMASWAMY ROAD, ALWARPET,P.B.No 6910, CHENNAI-600018	44-24995505,22680990-4	
	CABLE GLANDS	4	E1036	COMMET BRASS PRODUCTS	NUTAN CHEMICAL COMPOUND, WALBHAT ROAD, GOREGAON, MUMBAI-400063	91-022-26852961/62/63 comet@vsnl.net	
	CABLE GLANDS	5	DW08	DOWELLS	M/S. DOWELLS ELECTRICALS 47/47A, SATGURU INDUSTRIAL ESTATE. OFF AAREY ROAD, GOREGOAN (EAST). MUMBAI 400 063.	CEO : Mr. Jayantibhai S. Patel TEL: 022-32504770./022-29270876/ 022-29270878.	
	CABLE GLANDS	6	E1044	ELECTROMAC INDUSTRIES	27/28AF NEW EMPIRE IND.ESTT., R.KRISHNA MANDIR RD.JB NGR ,ANDHERI(E),MUMBAI-400059	91-22-28324829 / 66919034 devang@electromacglands.com	
	CABLE GLANDS	7	I01	INCAB	HARE STREET,KOLKATA,WEST BENGAL-700001	91-33-2480161/62/63/64 Fax : 91-33-2485766	
E512	CABLE LUGS	1	E1040	DOWELLS	M/S. DOWELLS ELECTRICALS 47/47A, SATGURU INDUSTRIAL ESTATE. OFF AAREY ROAD, GOREGOAN (EAST).	CEO : Mr. Jayantibhai S. Patel TEL: 022-32504770./022-29270876/ 033 2282 2540	
	CABLE LUGS	2	E1149	UNIVERSAL MACHINES LTD.	4,B.B.D.BAG (EAST) 90,STEPHEN HOUSE,5TH FLR CALCUTTA-700001		
E513	D.C. MCCB	1	C02	CROMPTON GREAVES	RAIL TRANSPORTATION SYSTEMS,VANDANA BUILDING, 11, TOLSTOY MARG, TOLSTOY MARG, NEW DELHI, DL 110001	011 3041 6300	
	D.C. MCCB	2	L01	L&T	32, SHIVAJI MARG, P.O. BOX- 6223, NEW DELHI-110015	011-41419554/59	
	D.C. MCCB	3	A35	GE-POWER	KAMAK TOWER, 3RD FLOOR, PLOT NO. 12-A, TVK INDUSTRIAL ESTATE, EKKADUTHANGAL,	044-49681447	
	D.C. MCCB	4	S01	SIEMENS	RC-IN I S NR DEL AREA, JIL BUILDING, TOWER-B, PLOT NO. 78, SECTOR 18, GURGAON-122015, INDIA	0124-2842000, 9873424331 amit.bhadauria@siemens.com	
	EARTH LEAKAGE CB	1	L01	L&T	32, SHIVAJI MARG, P.O. BOX- 6223, NEW DELHI-110015	011-41419554/59	
	EARTH LEAKAGE CB	2	S01	SIEMENS	RC-IN I S NR DEL AREA, JIL BUILDING, TOWER-B, PLOT NO. 78, SECTOR 18, GURGAON-122015, INDIA	0124-2842000, 9873424331 amit.bhadauria@siemens.com	
	EARTH LEAKAGE CB	3	A35	GE-POWER	KAMAK TOWER, 3RD FLOOR, PLOT NO. 12-A, TVK INDUSTRIAL ESTATE, EKKADUTHANGAL, GUINDY, CHENNAI-600032	044-49681447	

ITEM CODE	ITEM/SERVICE DESCRIPTION	SL NO.	VENDOR CODE	VENDOR NAME	ADDRESS	PHONE	REMARKS
ES14	EARTH LEAKAGE CB	4	S03	SCHNEIDER ELECTRIC INDIA PVT. LTD.	9TH FLOOR, BLDG. NO. 10, TOWER-C, DLF CYBER CITY, PH-II, GURGAON-122002	0124-3940400	
	EARTH LEAKAGE CB	5	C01	C&S ELECTRIC LTD.	222, OKHLA IND. ESTATE, PH-III, NEW DELHI-110020	011-3088 7520-29	
	EARTH LEAKAGE CB	6	A24	ABB	14, MATHURA ROAD, FARIDABAD, HARYANA-121003	0129-2567580, 09871799449	
	EARTH LEAKAGE CB	7	E1068	INDO ASIAN	B-24, PHASE - II, NOIDA - 201305, U.P.	120-3042222	
	EARTH LEAKAGE CB	8	E1088	MDS SWITCHGEAR LTD	314-317SHAH NAHAR ESTATE	011 - 25793021	
	EARTH LEAKAGE CB	9	E1120	S&S POWER SWITCHGEAR LTD,	NEW NO. 67, OLD NO. 19, DR. RANGA ROAD, MYLAPORE, CHENNAI - 600004	044 - 24988056, 044 - 24988057, 044 - 24988058	
ES16	GI CONDUITS	BIS APPROVED MAKE					
ES17	GI CONDUIT (EPOXY PAINTED)	BIS APPROVED MAKE					
ES18	FLEXIBLE CONDUITS (LEAD COATED)	1	P03	PLICA INDIA PVT. LTD.	V.P.AGARWAL MANAGING DIRECTOR, PLICA INDIA PVT. LTD. 149, MODEL TOWN EAST GHAZIABAD - 201009	M - 9810052131 / 0120-4563979 / 9810557567 Mail: agr@plicaindia.com	
ES19	FLEXIBLE CONDUIT (PVC COATED)	REPUTED MAKE					
ES20	DC CONTACTORS	1	S03	SCHNEIDER ELECTRIC INDIA PVT. LTD.	9TH FLOOR, BLDG. NO. 10, TOWER-C, DLF CYBER CITY, PH-II, GURGAON-122002	0124-3940400	
	DC CONTACTORS	2	E1030	BHEL (BHOPAL)	HEAVY ELECTRICAL PLANT		
	DC CONTACTORS	3	E1044	ELECTROMAC INDUSTRIES	27/28AF NEW EMPIRE IND.ESTT., R.KRISHNA MANDIR RD.JB NGR ,ANDHERI(E),MUMBAI-400059	91-22-28324829 / 66919034 devang@electromacglands.com	
	DC CONTACTORS	4	L01	L&T	32, SHIVAJI MARG, P.O. BOX- 6223, NEW DELHI-110015	011-41419554/59	
	DC CONTACTORS	5	S01	SIEMENS	RC-IN I S NR DEL AREA, JIL BUILDING, TOWER-B, PLOT NO. 78, SECTOR 18, GURGAON-122015, INDIA	0124-2842000, 9873424331 amit.bhadoria@siemens.com	
	DC CONTACTORS	6	E1144	TELEMECHANIQUE/ SCHNEIDER ELECTRIC INDIA PVT. LTD.	9TH FLOOR, BLDG. NO. 10, TOWER-C, DLF CYBER CITY, PH-II, GURGAON-122002	0124-3940400	TAKEN OVER BY SCHNEIDER
	DC CONTACTORS	7	A35	GE-POWER	KAMAK TOWER, 3RD FLOOR, PLOT NO. 12-A, TVK INDUSTRIAL ESTATE, EKKADUTHANGAL, GUINDY, CHENNAI-600032	044-49681447	
ES21	CONTROL SWITCHES/ SELECTOR SWITCH	1	E1076	KAYCEE	KAYCEE INDUSTRIES LTD., C/O-CMS COMPUTERS LTD., 35A, REAR BLDG., KILOKARI, NEW DELHI-110014	Rajiv Sharma-9312004687	
	CONTROL SWITCHES/ SELECTOR SWITCH	2	A35	GE-POWER	KAMAK TOWER, 3RD FLOOR, PLOT NO. 12-A, TVK INDUSTRIAL ESTATE, EKKADUTHANGAL, GUINDY, CHENNAI-600032	044-49681447	
	CONTROL SWITCHES/ SELECTOR SWITCH	3	G01	ALSTOM LTD	A-7, SEC-65, NOIDA	0120-479000	
	CONTROL SWITCHES/ SELECTOR SWITCH	4	S03	SCHNEIDER ELECTRIC INDIA PVT. LTD.	9TH FLOOR, BLDG. NO. 10, TOWER-C, DLF CYBER CITY, PH-II, GURGAON-122002	0124-3940400	
	CONTROL SWITCHES/ SELECTOR SWITCH	5	SR01	M/s Shrenik & Co.	39A/3, PANCHRATNA INDUSTRIAL ESTATE, SARKHEJ-BAVLA ROAD, CHANGODAR,		
	CONTROL SWITCHES/ SELECTOR SWITCH	6	RE05	RECOM PVT. LTD.	M/S RECOM PVT. LTD.,16A , 2ND FLOOR A, WING RAI INDUSTRIAL COMPLEX, MILITARY	Mr. Chandrashekar Kamath (MD) : 09820249503	
ES22	CONTROL TRANSFORMER/ WINDING HEATING TRANSFORMER	1	E1009	AUTOMATIC ELECTRIC LTD.	96 AB LONAVLA INDUSTRIAL ESTATE NANGARGAON, LONAVLA-410401	Phone : +91 2114323665 Fax : +91 2114273482	
	CONTROL TRANSFORMER/ WINDING HEATING TRANSFORMER	2	E1066	INDCOIL	PLOT NO. A- 150/ 151, 23RD U ROAD, WAGLE ESTATE, THANE WEST, CST RD, FRIENDS COLONY, HALLOW PUL, KURLA WEST, MUMBAI, MAHARASHTRA 400070	Phone:022 2583 8305	
	CONTROL TRANSFORMER/ WINDING HEATING TRANSFORMER	3	K18	KAPPA ELECTRICALS	KAPPA ELECTRICALS, KAPPA CONSOLIDATED PVT. LTD., 14, CART TRACK ROAD, MADUVANKARAI, CHENNAI - 600 042, INDIA.	PHONE: +91 - 44 - 22454709, 22454516, 22450794, 22450795 FAX: +91 - 44 - 22351662, 22451693 E-MAIL: mira@kappaelectricals.com sales@kappaelectricals.com	
	CONTROL TRANSFORMER/ WINDING HEATING TRANSFORMER	4	E1082	LOGICSTAT	B-160, INDUSTRIAL AREA, C BLOCK RD, OKHLA I, OKHLA INDUSTRIAL AREA, NEW DELHI, DL 110020	011 2681 0032	
	CONTROL TRANSFORMER/ WINDING HEATING TRANSFORMER	5	E1106	PRECISE ELECTRICALS	47A-49A,CHAKALA ROAD ANDHERI(E),MUMBAI-99 MUMBAI, MAHARASHTRA, INDIA PIN-400 099	022-8323402 / 022-8216433	
	CONTROL TRANSFORMER/ WINDING HEATING TRANSFORMER	6	E1128	UNILEC ENGINEERS PVT. LTD.	PLOT NO: R-247, T.T.C. INDUSTRIAL AREA, M.I.D.C , RABALE, NAVI MUMBAI- 400 701 INDIA	+91-22- 27607787 / 27607927 +91-22- 27607997	
	CONTROL TRANSFORMER/ WINDING HEATING TRANSFORMER	7	NK09	M/s Newtek Electricals	M-90, M.I.D.C, Waluj, Aurangabad 431136, Maharashtra, India	Tel/Fax: +91 240 2551555 E-mail: mkt.north@newtekelectricals.com , sales@newtekelectricals.com Mr Sanjeev Aggarwal (9958897890)	FOR CONTROL TRANSFORMER ONLY
	LT- CURRENT TRANSFORMER	1	S01	SIEMENS	RC-IN I S NR DEL AREA, JIL BUILDING, TOWER-B, PLOT NO. 78, SECTOR 18, GURGAON-122015, INDIA	0124-2842000, 9873424331 amit.bhadoria@siemens.com	
	LT- CURRENT TRANSFORMER	2	E1009	AUTOMATIC ELECTRIC LTD.	96 AB LONAVLA INDUSTRIAL ESTATE NANGARGAON, LONAVLA-410401	Phone : +91 2114323665 Fax : +91 2114273482	
	LT- CURRENT TRANSFORMER	3	E1066	INDCOIL	PLOT NO. A- 150/ 151, 23RD U ROAD, WAGLE ESTATE, THANE WEST, CST RD, FRIENDS COLONY, HALLOW PUL, KURLA WEST, MUMBAI, MAHARASHTRA 400070	Phone:022 2583 8305	
	LT- CURRENT TRANSFORMER	4	K18	KAPPA ELECTRICALS	KAPPA ELECTRICALS, KAPPA CONSOLIDATED PVT. LTD., SOUTHERN ELECTRIKS 14, CART TRACK ROAD, MADUVANKARAI, CHENNAI - 600 042, INDIA.	PHONE: +91 - 44 - 22454709, 22454516, 22450794, 22450795 FAX: +91 - 44 - 22351662, 22451693 E-MAIL: mira@kappaelectricals.com sales@kappaelectricals.com	
	LT- CURRENT TRANSFORMER	5	E1104	PRAGATI ELECTRICALS	280/3,II POKHRAN RD	5341779,5427041	

ITEM CODE	ITEM/SERVICE DESCRIPTION	SL NO.	VENDOR CODE	VENDOR NAME	ADDRESS	PHONE	REMARKS
ES23	LT- CURRENT TRANSFORMER	6	E1106	PRECISE ELECTRICALS	47A-49A,CHAKALA ROAD ANDHERI(E),MUMBAI-99 MUMBAI, MAHARASHTRA, INDIA PIN-400 099	022-8323402 / 022-8216433	
	LT- CURRENT TRANSFORMER	7	E1128	SILKAANS ELECT.MFG.CO.PVT.LTD	PLOT NO: R-247, T.T.C. INDUSTRIAL AREA, M.I.D.C., RABALE, NAVI MUMBAI- 400 701 INDIA	+91-22- 27607787 / 27607927 +91-22- 27607997	
	LT- CURRENT TRANSFORMER	8	E1111	PRAYOG ELECTRICALS PVT. LTD.	GROUND FLOOR, THAKORE INDUSTRIAL COMPU,ND, STATION ROAD, VIDYA VIHAR (W), NATHANI ROAD , OPP. AMIBIKA TEMPLE,MUMBAI Mumbai - 400086, Maharashtra, India	91-22-25164288/25133146 Mr. P. U. PATWARDHAN (MANAGING DIRECTOR)	
	LT- CURRENT TRANSFORMER	9	C01	C&S ELECTRIC LTD.	222, OKHLA IND. ESTATE, PH-III, NEW DELHI-110020	011-3088 7520-29	
	LT- CURRENT TRANSFORMER	10	NK09	M/s Newtek Electricals	M-90, M.I.D.C, Waluj, Aurangabad 431136, Maharashtra, India	Tel/Fax: +91 240 2551555 E-mail: mkt.north@newtekelectricals.com , sales@newtekelectricals.com Mr Sanjeev Aggarwal (9958897890)	
ES24	LT- POTENTIAL TRANSFORMER	1	S01	SIEMENS	RC-IN I S NR DEL AREA, JIL BUILDING, TOWER-B, PLOT NO. 78, SECTOR 18, GURGAON-122015, INDIA	0124-2842000, 9873424331 amit.bhadauria@siemens.com	
	LT- POTENTIAL TRANSFORMER	2	E1009	AUTOMATIC ELECTRIC LTD.	96 AB LONAVLA INDUSTRIAL ESTATE NANGARGAON, LONAVLA-410401	Phone : +91 2114323665 Fax : +91 2114273482	
	LT- POTENTIAL TRANSFORMER	3	E1066	INDCOIL	PLOT NO. A- 150/ 151, 23RD U ROAD, WAGLE ESTATE, THANE WEST, CST RD, FRIENDS COLONY, HALLOW PUL, KURLA WEST, MUMBAI, MAHARASHTRA 400070	Phone:022 2583 8305	
	LT- POTENTIAL TRANSFORMER	4	K18	KAPPA ELECTRICALS	KAPPA ELECTRICALS, KAPPA CONSOLIDATED PVT. LTD., SOUTHERN ELEKTRIKS 14, CART TRACK ROAD, MADUVANKARAI, CHENNAI - 600 042, INDIA.	PHONE: +91 - 44 - 22454709, 22454516, 22450794, 22450795 FAX: +91 - 44 - 22351662, 22451693 E-MAIL: mira@kappaelectricals.com sales@kappaelectricals.com	
	LT- POTENTIAL TRANSFORMER	5	E1104	PRAGATI ELECTRICALS	280/3,II POKHRAN RD	5341779,5427041	
	LT- POTENTIAL TRANSFORMER	6	E1106	PRECISE ELECTRICALS	47A-49A,CHAKALA ROAD ANDHERI(E),MUMBAI-99 MUMBAI, MAHARASHTRA, INDIA PIN-400 099	022-8323402 / 022-8216433	
	LT- POTENTIAL TRANSFORMER	7	E1128	SILKAANS ELECT.MFG.CO.PVT.LTD	PLOT NO: R-247, T.T.C. INDUSTRIAL AREA, M.I.D.C., RABALE, NAVI MUMBAI- 400 701 INDIA	+91-22- 27607787 / 27607927 +91-22- 27607997	
	LT- POTENTIAL TRANSFORMER	8	E1111	PRAYOG ELECTRICALS PVT. LTD.	GROUND FLOOR, THAKORE INDUSTRIAL COMPU,ND, STATION ROAD, VIDYA VIHAR (W), NATHANI ROAD , OPP. AMIBIKA TEMPLE,MUMBAI Mumbai - 400086, Maharashtra, India	91-22-25164288/25133146 Mr. P. U. PATWARDHAN (MANAGING DIRECTOR)	
	LT- POTENTIAL TRANSFORMER	9	NK09	M/s Newtek Electricals	M-90, M.I.D.C, Waluj, Aurangabad 431136, Maharashtra, India	Tel/Fax: +91 240 2551555 E-mail: mkt.north@newtekelectricals.com , sales@newtekelectricals.com Mr Sanjeev Aggarwal (9958897890)	
ES25	DC SWITCH	1	A35	GE-POWER	KAMAK TOWER, 3RD FLOOR, PLOT NO. 12-A, TVK INDUSTRIAL ESTATE, EKKADUTHANGAL, GUINDY, CHENNAI-600032	044-49681447	
	DC SWITCH	2	E1076	KAYCEE	KAYCEE INDUSTRIES LTD., C/O-CMS COMPUTERS LTD., 35A, REAR BLDG., KILOKARI, NEW DELHI-110014	Rajiv Sharma-9312004687	
	DC SWITCH	3	S01	SIEMENS	RC-IN I S NR DEL AREA, JIL BUILDING, TOWER-B, PLOT NO. 78, SECTOR 18, GURGAON-122015, INDIA	0124-2842000, 9873424331 amit.bhadauria@siemens.com	
ES26	DISTRIBUTION BOX	1	SR01	M/S SHRENIK & CO.	39A/3, PANCHRATNA INDUSTRIAL ESTATE, SARKHEJ-BAVLA ROAD, CHANGODAR, AHMEDABAD – 382 213		
ES27	EMER. PORTABLE LTG. SET	1	B05	BAJAJ ELECTRICALS	BAJAJ ELECTRICALS LTD. ENGINEERING & PROJECTS BU (NORTH) 3rd FLOOR, GULMOHARHOUSE, COMMUNITY CENTRE 161/B-4, GAUTAM NAGAR, YUSUF SARAI NEW DELHI – 110049	CONTACT PERSON : Mr. S. SREEMANY. SR. MANAGER (PROJECTS) CONTACT DETAILS : (+91) 9871025705. MAIL ID : srabans@bajajelectricals.com;	
	EMER. PORTABLE LTG. SET	2	B05	BAJAJ ELECTRICALS	BAJAJ ELECTRICALS LTD. ENGINEERING & PROJECTS BU (NORTH) 3rd FLOOR, GULMOHARHOUSE, COMMUNITY CENTRE 161/B-4, GAUTAM NAGAR, YUSUF SARAI NEW DELHI – 110049	SREEMANY. SR. MANAGER (PROJECTS) CONTACT DETAILS : (+91) 9871025705. MAIL ID : srabans@bajajelectricals.com;	
ES28	FUSE BASE	1	E1068	INDO ASIAN	B-24, PHASE - II , NOIDA - 201305, U.P.	120-3042222	
	FUSE BASE	2	G01	GE-POWER	KAMAK TOWER, 3RD FLOOR, PLOT NO. 12-A, TVK INDUSTRIAL ESTATE, EKKADUTHANGAL, GUINDY, CHENNAI-600032	044-49681447	
	FUSE BASE	3	L01	L&T	32, SHIVAJI MARG, P.O. BOX- 6223, NEW DELHI-110015	011-41419554/59	
	FUSE BASE	4	C01	C&S ELECTRIC LTD.	222, OKHLA IND. ESTATE, PH-III, NEW DELHI-110020	011-3088 7520-29	
	FUSE BASE	5	S01	SIEMENS	RC-IN I S NR DEL AREA, JIL BUILDING, TOWER-B, PLOT NO. 78, SECTOR 18, GURGAON-122015, INDIA	0124-2842000, 9873424331 amit.bhadauria@siemens.com	
	FUSE BASE	6	A24	ABB	14, MATHURA ROAD, FARIDABAD, HARYANA-121003	0129-2567580, 09871799449	
	FUSE BASE	7	S02	SPACEAGE SWITCHGEARS LTD.	68 & 13-A INDUSTRIAL DEVELOPMENT COLONY, MEHRAULI ROAD GURGAON, HARYANA-122001	0124-2302711, 4085091	
	FUSE BASE	8	S03	SCHNEIDER ELECTRIC INDIA PVT. LTD.	9TH FLOOR, BLDG. NO. 10, TOWER-C, DLF CYBER CITY, PH-II, GURGAON-122002	0124-3940400	

ITEM CODE	ITEM/SERVICE DESCRIPTION	SL NO.	VENDOR CODE	VENDOR NAME	ADDRESS	PHONE	REMARKS
	FUSE BASE	9	G01	ALSTOM LTD	A-7, SEC-65, NOIDA	0120-479 0000	
	FUSE BASE	10	E1050	ESSEN DEINKI	FLAT NO. 502, SKYLINE HOUSE 85, NEHRU PLACE NEW DELHI	011-26217060	
ES29	HRC FUSES	1	E1068	INDO ASIAN	B-24, PHASE - II , NOIDA - 201305, U.P.	120-3042222	
	HRC FUSES	2	G01	GE-POWER	KAMAK TOWER, 3RD FLOOR, PLOT NO. 12-A, TVK INDUSTRIAL ESTATE, EKKADUTHANGAL, GUINDY, CHENNAI-600032	044-49681447	
	HRC FUSES	3	L01	L&T	32, SHIVAJI MARG, P.O. BOX- 6223, NEW DELHI-110015	011-41419554/59	
	HRC FUSES	4	C01	C&S ELECTRIC LTD.	222, OKHLA IND. ESTATE, PH-III, NEW DELHI-110020	011-3088 7520-29	
	HRC FUSES	5	S01	SIEMENS	RC-IN I S NR DEL AREA, JIL BUILDING, TOWER-B, PLOT NO. 78, SECTOR 18, GURGAON-122015, INDIA	0124-2842000, 9873424331 ;amit.bhadoria@siemens.com	
	HRC FUSES	6	A24	ABB	14, MATHURA ROAD, FARIDABAD, HARYANA-121003	0129-2567580, 09871799449	
	HRC FUSES	7	S02	SPACEAGE SWITCHGEARS LTD.	68 & 13-A INDUSTRIAL DEVELOPMENT COLONY, MEHRAULI ROAD GURGAON, HARYANA-122001	0124-2302711, 4085091	
	HRC FUSES	8	S03	SCHNEIDER ELECTRIC INDIA PVT. LTD.	9TH FLOOR, BLDG. NO. 10, TOWER-C, DLF CYBER CITY, PH-II, GURGAON-122002	0124-3940400	
	HRC FUSES	9	G01	ALSTOM LTD	A-7, SEC-65, NOIDA	0120-479 0000	
	HRC FUSES	10	E1050	ESSEN DEINKI	FLAT NO. 502, SKYLINE HOUSE 85, NEHRU PLACE NEW DELHI	011-26217060	
ES30	GALVANISING	1		Jenco Industrial Corporation	Chincholi Bunder Khkar Road Near Link Road Devruwadi Malad (W) Mumbai 400064		
	GALVANISING	2		National Galvanizing Company	66, Barrackpore Kamarhatt Trunck Road Calcutta-700058		
	GALVANISING	3		Sigma Galvanising Pvt. Ltd.	Plot No.C-169, TTC, MIDC Ind Area Navin Mumbai-400705	8725402,8725765	
	GALVANISING	4		B.P. Projects PVT LTD	167A, Vivekananda Road Kolkata-700006	033 2553 1254	
	GALVANISING	5		Standard Galvanisers	Makardah Road, Kabar Para, Bankra, Howarah -711403	28756318/28741986/28725402/28725765	
	GALVANISING	6		Steel Products	National Highway No. 6, Chamrail, Kona, Howrah-711114		
	GALVANISING	7		Unitech Fabricators & Engineers Pvt. Ltd.	Village- Ajab Nagar, P.O. -Molla Simlla, P.S. - Singur, Dist - Hoogly, Pin-712223	022 -27686606/ 1907	
	GALVANISING	8		Shivam Engineers & Fabricators	A0-282-284, Industrial Area, South Side of G.T. Road, Ghaziabad, U.P.		
	GALVANISING	9		B.G. Shirke Construction Technology Pvt. Ltd	72-76, Mundhawa, Pune - 401 036		
	GALVANISING	10		Galbro Ispat Galvanizers Pvt. Ltd.	GUT 11 AND 12, OPP. Kudus Steel,Rolling Mill, Wada, Thane , Mumbai		
	GALVANISING	11		Eros Infrastructures Pvt. Ltd.	G-97, MIDC, Bhutibori , Nagpur-441108, Maharashtra		
	GALVANISING	12		Industrial Perforation (India) Pvt. Ltd.	Ganganagr, Katakhal, Kolkata-700132		
	GALVANISING	13		Indmark Formtech Pvt. Ltd.	Phase - 3, E - 11 / 1, M. I. D. C., Chakan, Pune - 410 501, Maharashtra, India.		
	GALVANISING	14		Namdhari Industrial Traders Pvt. Ltd.	Village Latton Dana, Chandigarh Road, Ludhiana		
	GALVANISING	15		Neha Galvaniser	Jalan Industrial Estate, Gate No-1, 1st Right Choise Lane, Near N.G-6, Jangalpur, PO Domjur Howrah - 700071, West Bengal, India		
	GALVANISING	16		Patny Systems (P) Ltd.	Unit-IV, Sy No. -228/9, Plot No. 6, IP Kuchavaram, Toopran(M) Dist.- Medak, Telegana - 502336		
	GALVANISING	17		Parmar Metal Company	Survey No.207,Veraval (Shapar) Dist. Rajkot, India.		
	GALVANISING			Rukmani Electrical & Components Pvt Ltd	Urla Industrial Area, Urla Sarora Road, Raipur-493 221 (Chhattisgarh)		
	GALVANISING	18		Rukmani Fab & Gal Pvt Ltd	Shankharidaha Baniyarah, Jalan Industrial Complex, Gate no.3, Lane no. 4, Domjur, Howrah , W.B - 711411		
	GALVANISING	19		DMP Projects Pvt.Ltd.	Dulagarh Industrial Park , PS-Sankrail , Howrah -711302		
	GALVANISING	20		Vinfab Engineers India Private Limited	Gut no. 224/1 &2 Bhiwandi Wada State Highway, Village khupri, Dist. Thane, Maharashtra -421303		
	GALVANISING	21		Saral Projects & Processors	B-1, Industrial Area, Site-II, Amawan Road Rae Bareil		
	GALVANISING	22		Brahampuri Steels Limitec	172 (F) Industrial Area, Jhotwara, Jaipur-302013		
	GALVANISING	23		Indiana Gratings PVT. LTD	F-5, MIDC Jejuri, Pune-412 303		
	GALVANISING	24	AT08	M/s AVAIDS TECHNOVATORS PVT. LTD.	131, MATSYA INDUSTRIAL AREA, ALWAR RAJASTHAN		
	GALVANISING	25	RPO8	M/s Ratan Projects & Engineering Co. Pvt. Ltd.	VILL Muslim Para, PO- Barunda, P.S – Bagnan, Howrah – 711 303		
	GALVANISING	26		M/s GAYATRI FABTECH	F-253-254, Phase-1, MG Road Industrial Area, Dist. Hapur, U.P	Mr. Prashant Jindal (prashant@gayatrifabtech.com; ph.No.-9809035244)	zinc bath facility of 7-meter length
	GALVANISING	27		M/s R.K. Engineering and Galvanizers Pvt. Ltd.	W/87,Addl Ambernath Anandnagar,MIDC,Ambernath-East Thane 421506 Maharashtra	K.S. Mhoparekar, Proprietor Phone- 9923009696 FAX : 0251-2620960 Email : salespune@rkenggworks.in	
	GALVANISING	28		M/s DCPPOWER PRODUCTS PRIVATE LIMITED	Saraswati Complex, Vill. & P.O - Bhandardah, P.S - Domjur, Dist. Howrah, Pin - 711411	Shrutika Mohta, Sales Manager Phone- 6290750612 Email : 'Shrutika Mohta' <sales@advancepowerproducts.in	

ITEM CODE	ITEM/SERVICE DESCRIPTION	SL NO.	VENDOR CODE	VENDOR NAME	ADDRESS	PHONE	REMARKS
	GALVANISING	29		M/s ANASUA GALVASTEEL PRIVATE LIMITED	JL NO 55 Dag no. 3147,3148,3159,3162 MADHYA SANTOSH PUR, PO: -DAKSHIN SANTOSH PUR, HOWRAH-711404	Saurav Das Phone- 9147387233 Email : saurav.engineering@sjewgroup.in ; 'sjew tapan' <sjewtapan@gmail.com>	
ES31	GI WIRE & FLAT	1	I039	INDUSTRIAL PERFORATION (I) PVT.LTD.	MR. A. K. SAHA 327, R.N.GUHA ROAD, DUM DUM KOLKATA-West Bengal-India Phone- 9830241788 Pincode : 700028 Email : ipipl@cal2.vsnl.net.in	011 2737 3579	
	GI WIRE & FLAT	2	I070	INDIA ELECTRICALS SYNDICATE	Mr. Suresh Kumar Agarwal 55, Ezra Street, Kolkata-West Bengal-India Phone- 033-22354047 Pincode : 700001 Email : cabletray@vsnl.com	022-28511704	
	GI WIRE & FLAT	3	I072	INDMARK FORMTECH PVT. LTD.	Mr. Narendra R. Meher J Block, Plot No.-375, MIDC BHOSARI PUNE-MAHARASHTRA-INDIA Phone- 020-27130546 Pincode : 411026 Email : indmarkformtech@vsnl.net		
	GI WIRE & FLAT	4	P039	PREMIER POWER PRODUCTS (CAL) PVT. LTD.	Chatterjee International Centre, 33A, Jawaharalal Nehru Road, 6th Floor, Suit No. - 11A, Kolkata,-West Bengal-India Phone- 9331008739 Pincode : 700071 Email : hemantdaga@dagaventures.com		
	GI WIRE & FLAT	5	P050	PATNY SYSTEMS (P) LTD	PATNY PLAZA 160 , SARDAR PATEL ROAD SEUNDRABAD SECUNDRABAD-TELANGANA-INDIA Phone- 040-27902451 Pincode : 500003 Email : mr.mkt@patnysystems.com		
	GI WIRE & FLAT	6	P079	PASSIVE INFRA PROJECTS PVT. LTD.	MR. VARUN AGRAWAL 182, VAISHALI, PITAMPURA Delhi-DELHI-INDIA Phone- 9871183059 Pincode : 110088 Email : ATANU.SAHA@PASSIVEINFRA.COM		
	GI WIRE & FLAT	7	R036	RUKMANI ELECTRICAL & COMPONENTS PVT LTD	11A , MAHARISHI DEBENDRA ROAD 1ST FL , ROOM NO.4 KOLKATA-WEST BENGAL-INDIA Phone- Pincode : 700007 Email : maruthikabra@gmail.com		
	GI WIRE & FLAT	8	R037	RATAN PROJECTS & ENGINEERING CO. PVT.LTD.	MR. G.D. SINGHEE/MR. MAHESH SINGHEE 26, P.K. TAGORE STREET, MAIN BUILDING KOLKATA-WEST BENGAL-INDIA Phone- 9830177331 Pincode : 700006 Email : mahesh@ratans.com		
	GI WIRE & FLAT	9	R041	RABI ENGINEERING WORKS PVT. LTD.	MR. TAPAN KUMAR SEN/MR. SIDDHARTHA 327, R.N. GUHA ROAD, DUM DUM, KOLKATA- WEST BENGAL-INDIA Phone- 9748753002 Pincode : 700028 Email : rabiengineering@gmail.com		
	GI WIRE & FLAT	10	R200	RAJASTHAN METAL SMELTING CO.	Mr. R. K. Tibrewala D-80, Road No. 7, V.K.I.A., Jaipur-Rajasthan-India Phone- 0141-2332269 Pincode : 302013 Email : info@rmscoindia.com		
	GI WIRE & FLAT	11	S210	SARAL INDUSTRIES	Mr. Y.K. Gupta L-1, L-2, Industrial Area-1 Sultanpur Road Rae Bareilly-Uttar Pradesh-India Phone- 0535-2702474 Pincode : 229010 Email : saralindustries@gmail.com		
	GI WIRE & FLAT	12		PARCO Engineers Pvt. Ltd.	401, skyline Epitom Building ,Near to Jolly Gym Khana, Kiroil Road , Vidhyavihar, MH 400086 India		
	GI WIRE & FLAT	13	U019	UNITECH FABRICATORS and ENGINEERS PVT LTD	INDRAPRASHTHA APARTMENT 24 , M.B.RAOD , BIRATI KALABAGAN KOLKATA KOLKATA-WEST BENGAL-INDIA Phone- Pincode : 700051 Email : ufepl@vsnl.net; ufepl@rediffmail.com	022 - 26230814	
ES32	HIGH MAST	1	B05	BAJAJ ELECTRICALS	BAJAJ ELECTRICALS LTD. ENGINEERING & PROJECTS BU (NORTH) 3rd FLOOR, GULMOHARHOUSE, COMMUNITY CENTRE 161/B-4, GAUTAM NAGAR, YUSUF SARAI NEW DELHI – 110049	SREEMANY. SR. MANAGER (PROJECTS) CONTACT DETAILS : (+91) 9871025705. MAIL ID :rabans@bajajelectricals.com;	
	HIGH MAST	2	TL01	M/S TRANSRAIL LIGHTING LIMITED (TLL)	M/S TRANSRAIL LIGHTING LIMITED (TLL), GAMMON INDIA LIMITED 2ND FLOOR , CENTRIC PLAZA, PLOT NO.8 POCKET-4, SECTOR-11 DWARKA , NEW DELHI -110075	hemant.jain@transrailtld.com'	
ES33	IND.POWER & WLDG SOCKETS	1	C02	CROMPTON GREAVES	3RD FLOOR, EXPRESS BUILDING,9-10, BAHADUR SHAH ZAFAR MARG, NEAR ITO CROSSING,NEW DELHI-110002, INDIA	91 11 23460700 - 999 'Sunil.Das@cglobal.com	
	IND.POWER & WLDG SOCKETS	2	E1207	CYCLO ELECTRIC DEVICE & SERV.CO.	: A-3, NEAR ANTHEM BIOSCIENCE, KSSIDC INDUSTRIAL AREA, BOMMASANDRA, BOMMASANDRA INDUSTRIAL AREA, BANGALORE, KARNATAKA 560099	Mr. H.Jaishanker +919845039081, 080 - 27833102 , 080 - 27833103 : +91 80 41460985 'cycloelectric@gmail.com	
	IND.POWER & WLDG SOCKETS	3	B04	BCH	20/4, MATHURA ROAD, FARIDABAD - 121006, HARYANA, INDIA	0(129)-4063000, 9015800189(Ramesh Giri) 'ramesh.giri@bchindia.com	
	IND.POWER & WLDG SOCKETS	4	B02	BEST & CROMPTON	Best & Crompton Engineering Ltd	Ph : +91 44 4551 4724 , MRKT	BEST & CROMPTON
	IND.POWER & WLDG SOCKETS	5	A03	AJMERIA INDUSTRIES & ENGG. WORKS	AJMERIA INDL. AND ENGG. WORKS. AJMERIA HOUSE, A-61 / KHAIRANE MIDC. , TTC INDL. AREA, NAVI MUMBAI – 400705.	Tel : 022 27620299 / 97 / 96 'mail@ajmera.net	
ES34	INTERPOSING RELAY	1	A24	ABB	14, MATHURA ROAD, FARIDABAD, HARYANA-121003	0129-2567580, 09871799449	
	INTERPOSING RELAY	2	G01	ALSTOM LTD	A-7, SEC-65, NOIDA	0120-479 0000	
	INTERPOSING RELAY	3	E1075	JYOTI LTD.	JYOTI LIMITED, E&CS DIVISION,3/15, BIDC, GORWA,VADODARA - 390 016, E-MAIL ID: ECS@JYOTI.COM	Ph. No.:+91-265-2281214 , Fax No.:+91-265-2281214	
	INTERPOSING RELAY	4	E1099	OEN INDIA LTD	29/1479, VYTILLA, COCHIN - 682 019 KERALA, INDIA	Phone : +91 484 2301132, 2303709 Fax : +91 484 2302287, 2302221 sales@oenindia.com	
	INTERPOSING RELAY	5	S01	SIEMENS	RC-IN I S NR DEL AREA, JIL BUILDING, TOWER-B, PLOT NO. 78, SECTOR 18, GURGAON-122015, INDIA	0124-2842000, 9873424331 amit.bhadauria@siemens.com	
	INDICATING LAMPS	1	B04	BCH	20/4, MATHURA ROAD, FARIDABAD, HARYANA-121006	0129-4293000	

ITEM CODE	ITEM/SERVICE DESCRIPTION	SL NO.	VENDOR CODE	VENDOR NAME	ADDRESS	PHONE	REMARKS
ES35	INDICATING LAMPS	2	C01	C&S ELECTRIC LTD.	222, OKHLA IND. ESTATE, PH-III, NEW DELHI-110020	6832259,6918834-37	
	INDICATING LAMPS	3	E1050	ESSEN DEINKI	FLAT NO. 502, SKYLINE HOUSE 85, NEHRU PLACE NEW DELHI	011-26217060	
	INDICATING LAMPS	4	E1153	VAISHNO(HOTLINE SWGR.& CONTROL)	G-19, SECTOR - 11, NOIDA - 201301, UTTAR PRADESH, INDIA	8377805157 9818338922	
	INDICATING LAMPS	5	A35	GE-POWER	KAMAK TOWER, 3RD FLOOR, PLOT NO. 12-A, TVK INDUSTRIAL ESTATE, EKKADUTHANGAL, GUINDY, CHENNAI-600032	9818338922	
	INDICATING LAMPS	6	S01	SIEMENS	RC-IN I S NR DEL AREA, JIL BUILDING, TOWER-B, PLOT NO. 78, SECTOR 18, GURGAON-122015, INDIA	0124-2842000, 9873424331 amit.bhadauria@siemens.com	
	INDICATING LAMPS	7	S03	SCHNEIDER ELECTRIC INDIA PVT. LTD.	9TH FLOOR, BLDG. NO. 10, TOWER-C, DLF CYBER CITY, PH-II, GURGAON-122002	0124-3940400	
ES36	JUNCTION BOXES (NON FLAME PROOF)	1	J01	JASPER ENGINEERS PVT. LTD.	A-23, SECTOR - 8, NOIDA-201301	0120-4033520/533	
	JUNCTION BOXES (NON FLAME PROOF)	2	EC05	Electro Controls & Devices	M/S ELECTRO CONTROLS & DEVICES, F-41, SITE-C, SURAJPUR INDUSTRIAL AREA GREATER NOIDA, UTTAR PRADESH :201308	Mr. Sanjay Sharma (Chief Promoter) 0120-2569487, 2560100,2560300	
	JUNCTION BOXES (NON FLAME PROOF)	3	SRC01	M/s Shrenik & Co.	39A/3, PANCHRATNA INDUSTRIAL ESTATE, SARKHEJ-BAVLA ROAD, CHANGODAR, AHMEDABAD – 382 213	020-026708100	
	JUNCTION BOXES (NON FLAME PROOF)	4	PME-01	M/s PHOENIX MECANO LTD.,	388 BHARE, TALUKA MULSHI, POST GHOTAWADE, PIRANGOOT, INDUSTRIAL AREA, PUNE-412115	Awasthi(09971119006) Tel: ++91 20 6674 5103, Mobile: +91 90499 95985, Fax: ++91 20 6674 5126	
	JUNCTION BOXES (NON FLAME PROOF)	5	ACE01	Adroit Control Engineers Pvt.Ltd.	M/S ADROIT CONTROL ENGINEERS PVT.LTD. PLOT-3, KRISHNA INDL. AREA, SECTOR-25 FARIDABAD – 121004	011-47600700, 0129-4251400	
	JUNCTION BOXES (NON FLAME PROOF)	6	PME-01	M/s PHOENIX MECANO LTD.,	388 BHARE, TALUKA MULSHI, POST GHOTAWADE, PIRANGOOT, INDUSTRIAL AREA, PUNE-412115	Awasthi(09971119006) Tel: ++91 20 6674 5103, Mobile: +91 90499 95985, Fax: ++91 20 6674 5126 contact person : Vishwa bandhu E-mail:d.gupta@pmipl-online.com ;admin@pmipl-online.com	
	JUNCTION BOXES (NON FLAME PROOF)	7	MK01	MIKA ENGINEERS	BRANCH OFFICE : 'D'-101, DHEERAJ HERITAGE RESIDENCY II, SHASTRI NAGAR, SANTACRUZ (W), MUMBAI 400 054.	Director : Mr. Asgar Karimi Email: asgar@mikaengineers.com E-mail : mika@mtnl.net.inTelfax : 022-26610081/82/83/84Tel : 02527-249066/70 Cell : 099230 74373	TYPE-S ONLY
	JUNCTION BOXES (NON FLAME PROOF)	8	PME-01	M/s PHOENIX MECANO LTD.,	388 BHARE, TALUKA MULSHI, POST GHOTAWADE, PIRANGOOT, INDUSTRIAL AREA, PUNE-412115	TEL.- +912066745000 Awasthi(09971119006) Tel: ++91 20 6674 5103, Mobile: +91 90499 95985, Fax: ++91 20 6674 5126 contact person : Vishwa bandhu E-mail:d.gupte@pmipl-online.com ;admin@pmipl-online.com	
	JUNCTION BOXES (NON FLAME PROOF)	9	B05	BAJAJ ELECTRICALS	BAJAJ ELECTRICALS LTD. ENGINEERING & PROJECTS BU (NORTH) 3rd FLOOR, GULMOHARHOUSE, COMMUNITY CENTRE 161/B-4, GAUTAM NAGAR, YUSUF SARAI NEW DELHI – 110049	CONTACT PERSON : Mr. S. SREEMANY. SR. MANAGER (PROJECTS) CONTACT DETAILS : (+91) 9871025705. MAIL ID : srabans@bajajelectricals.com;	
	JUNCTION BOXES (NON FLAME PROOF)	10	A03	AJMERIA INDUSTRIES & ENGG. WORKS	AJMERIA INDL. AND ENGG. WORKS. AJMERIA HOUSE, A-61 / KHAIRANE MIDC., TTC INDL. AREA, NAVI MUMBAI – 400705.	Tel : 022 27620299 / 97 / 96 'mail@ajmera.net	
	JUNCTION BOXES (NON FLAME PROOF)	11	SB02	S.B. ELECTRICAL ENGINEERING CORPORATION	03, SARDAR GRIHA BUILDING, LOHAR CHAWAL, MUMBAI-400002	022- 22069831; 022-66637259	
	JUNCTION BOXES (NON FLAME PROOF)	12	RT13	RITTAL INDIA PVT. LTD.	Espire Building ,Level -1 A-41, Mohan Co-Operative Industrial Estate ,Mathura Road, New Delhi -110044	Amit Bansal Phone: 011-42004000, D: 011-42004033 · Mobile: +91 9717772245 · mailto:amit.b@rittal-india.com www.rittal-india.com	
	JUNCTION BOXES (NON FLAME PROOF)	13	HP08	HPL ELECTRIC AND POWER LTD.	Works Address: Village Shavella, PO:Jabli, Teh- Kasauli, Dist-Solan, Himachal Pradesh-173209	Mr. Ashwani Kumar mailto:'ashwani@hplindia.com' M:9971127370	
ES37	JUNCTION BOXES (FLAME PROOF)	1	SS01	SUDHIR SWITCHGEAR	305/6, APEEJAY HOUSE, 130, BOMBAY SAMACHAR MARG, MUMBAI - 400 023. INDIA	Telephone Nos. : 40460000 (100 lines) Fax Nos. : ++91-22-22049381 Email : md@sudhirswitchgears.com ; works@sudhirswitchgears.com ;scud@vsnl.com	
	LIGHTING DISTRIBUTION BOARDS	1	E1007	ADVANCE ENGG. COMPANY	38,SETHI IND. ESTATE 10/E,SUREN RD,ANDHERI MUMBAI-400097	91 - 22 - 24360086	
	LIGHTING DISTRIBUTION BOARDS	2	STRG01	Sterling Generators Pvt. Ltd.	C-56/38, INSTITUTIONAL AREA, SECTOR-62, NOIDA -201307, U.P.	Nityanand Engineer-Sales & Marketing (Panel Division) Noida, UP 201307, India Mobile++91-8510022170	

ITEM CODE	ITEM/SERVICE DESCRIPTION	SL NO.	VENDOR CODE	VENDOR NAME	ADDRESS	PHONE	REMARKS
ES38	LIGHTING DISTRIBUTION BOARDS	3	E1091	MIKA ENGINEERS	BRANCH OFFICE : 'D'-101, DHEERAJ HERITAGE RESIDENCY II, SHASTRI NAGAR, SANTACRUZ (W), MUMBAI 400 054.	Director : Mr. Asgar Karimi E-mail : mika@mtnl.net.in Telfax : 022-26610081/82/83/84 Tel : 02527-249066/70 Cell : 099230 74373 ; Email: asgar@mikaengineers.com	
	LIGHTING DISTRIBUTION BOARDS	4	F04	ELEXPRO ELECTRICALS PVT/ LTD.	C 1/27 & 37 GIDC KABILPORE NAVSARI-396424	02637-265140, Mr. Jssk kumar	
	LIGHTING DISTRIBUTION BOARDS	5	KM1	KMG ATOZ SYSTEMS	"ATOZ HOUSE" C-49, SECTOR-81, GAUTAM BUDDH NAGAR, NOIDA – 201 305 U. P. (INDIA)	Tel : +91-120-4207920 Fax : +91-120-4207921, 4327958 Phone:098 10 802710	
	LIGHTING DISTRIBUTION BOARDS	6	E05	UNILEC ENGINEERS PVT. LTD.	BEHRAMPUR INDUSTRIAL AREA, BEGAMPUR KHATOLA ROAD, GURGAON-122001	0124-4030247,248, 4559700, 9911087173	
	LIGHTING DISTRIBUTION BOARDS	7	AVA01	AVAIODS TECHNOVATORS LTD.	PLOT NO.25 ,SECTOR-3,JMT-MANESAR, GURGEON-122050 (HARYANA)	KRISHNA KALRA- 09958096168	
	LIGHTING DISTRIBUTION BOARDS	8	ACE01	Adroit Control Engineers Pvt.Ltd.	M/S ADROIT CONTROL ENGINEERS PVT.LTD. PLOT-3, KRISHNA INDL AREA, SECTOR-25 FARIDABAD – 121004	011-47600700, 0129-4251400	
	LIGHTING DISTRIBUTION BOARDS	9	JC01	JACKSON ENGINEERS	A-43, HOSEIRY COMPLEX, OPPOSITE NSEZ, NOIDA-201305	0120-4302600, 2568923,27	
	LIGHTING DISTRIBUTION BOARDS	10	ADL01	Adlec Systems Private Limited	PLOT NO-277, SWARN PARK, UDYOG NAGAR, MUNDKA, MAIN ROHTAK ROAD, UDYOG NAGAR, NEW DELHI, DELHI 110041	011 2834 5061	
	LIGHTING DISTRIBUTION BOARDS	11	POP01	Popular Switchgears Pvt Ltd	712, ARUN CHAMBERS, TARDEO MAIN ROAD, TARDEO, NEAR TARDEO AIRCONDITIONER MARKET, MUMBAI - 400034	-9362634406	
	LIGHTING DISTRIBUTION BOARDS	12	CS01	CANDS	J/202, ANSA INDUSTRIAL ESTATE, SAKI VIHAR ROAD, SAKINAKA, ANDHERI (EAST), MUMBAI- 72	022-28570858	
	LIGHTING DISTRIBUTION BOARDS	13	PYRE01	Pyrotech Electronics Pvt. Ltd.	M/s Pyrotech Electronics Pvt. Ltd.(Unit -1) Led Light, Sensor Division F-16A, Road No.3 Mewar Industrial Area, Madri Udaipur -313003, Rajasthan,	Concern Person – Mr. Praveen sisodiya (psisodia@pyrotechlighting.com) Ankit Kumar Sr. Engineer(North Region -Sales & Marketing) # +91- 7340061769, 8287897309	
	LIGHTING DISTRIBUTION BOARDS	14	PCS01	Positronics Pvt. Ltd.	POSITRONICS HOUSE ,882/ 2, G.I.D.C. MAKARPURA,VADODARA 390010 GUJARAT	+91 265 2642496 Fax: +91 265 264 7033 / 234 0944 E- mail : info@positronicsindia.com Website:www.positronicsindia .com	
	LIGHTING DISTRIBUTION BOARDS	15	ISC01	Industrial Switchgears & Control Pvt Ltd	S-02 AMARDEEP MAHAL, NANDA PATKAR RD, VILE PARLE EAST, MUMBAI - 400057	(91)-22-26182011	
ES39	LIGHTING FIXTURES (NON LED)	2	E1206	BALIGA LIGHTING EQPT PVT LTD	63A,CP RAMASWAMY ROAD, PB NO 6910, CHENNAI-600018	44-24995505,22680990-4	
	LIGHTING FIXTURES (NON LED)	3	F04	ELEXPRO ELECTRICALS PVT/ LTD.	C 1/27 & 37 GIDC KABILPORE NAVSARI-396424	02637-265140, Mr. Jssk kumar	
	LIGHTING FIXTURES (NON LED)	4	B05	BAJAJ ELECTRICALS	BAJAJ ELECTRICALS LTD. ENGINEERING & PROJECTS BU (NORTH) 3rd FLOOR, GULMOHARHOUSE, COMMUNITY CENTRE 161/B-4, GAUTAM NAGAR, YUSUF SARAI NEW DELHI – 110049	CONTACT PERSON : Mr. S. SREEMANY . SR. MANAGER (PROIECTS) CONTACT DETAILS : (+91) 9871025705. MAIL ID : srabans@bajajelectricals.com;	
	LIGHTING FIXTURES (NON LED)	5	C02	CROMPTON GREAVES	3RD FLOOR, EXPRESS BUILDING,9-10, BAHADUR SHAH ZAFAR MARG, NEAR ITO CROSSING,NEW DELHI-110002, INDIA	91 11 23460700 - 999 Sunil.Das@cgglobal.com, Mr. Prashant Wewhare 9930095703 (0250) 6458250	
	LIGHTING FIXTURES (NON LED)	6	E1051	EVERGREEN ENGG. CO.	EVERGREEN ENGG COMPANY WORKS-5, PLOT NO. 9,10,11,12, SURVEY NO. 242, CHINCH PADA, VASAI EAST-401208	01244606001, Sharad (+919871150447)	
	LIGHTING FIXTURES (NON LED)	7	P01	PHILIPS	9TH FLOOR,DLF 9B, DLF CYBER CITY, DLF PHASE- III,GURGAON-122002	020-66098700	
	LIGHTING FIXTURES (NON LED)	8	WP01	WIPRO LTD.	WIPRO CONSUMER CARE AND LIGHTING, 5TH FLOOR, GODREJ ETERNIA -C, OLD PUNE- MUMBAI ROAD, SHIVAJINAGAR, PUNE -411005		
	LIGHTING FIXTURES (NON LED)	9	HP01	M/S HPL ELECTRIC & POWER PVT. LTD	M/S HPL ELECTRIC & POWER PVT. LTD. PLOT NO. 76-B,PHASE-IV, SEC-57, HSIIDC, INDL. AREA , KUNDLI, DIST - SONEPAT (HARYANA) - 131028	mohitsharma@hplindia.com'	
	LIGHTING FIXTURES (NON LED)	10	SR01	SURYA ROSHNI LIMITED	PADMA TOWER, RAJENDRA PLACE, RAJENDRA PLACE NEW DELHI	011-25810093 ; 9810071832 (Akhilesh Agrawal) aagrawal@sroshni.com	
	LIGHTING FIXTURES (NON LED)	11	HI02	HAVELLS INDIA LIMITED	QRG TOWERS , 2D SECTOR-126, NOIDA- 201301	GIRISH KUMAR SHRIVASTAVA +91-9810528922	
	LIGHTING FIXTURES (NON LED)	12	HN13	M/s Halonix Technologies Limited	M/s Halonix Technologies Limited B-31 , Phase -II, Noida Distt. Gautam Budh Nagar (U.P.) Pin- 201305	Mr. Mohit Gautam 'Tel: +919568152111 'mohit.gautam@halonix.co.in'; 'rahul.singh@halonix.co.in'	

ITEM CODE	ITEM/SERVICE DESCRIPTION	SL NO.	VENDOR CODE	VENDOR NAME	ADDRESS	PHONE	REMARKS
E540	LIGHTING FIXTURES (LED)	1	NED1	Neev Luminaries	B-6/3 Okhla Industrial Area Phase-2 New Delhi 110020	Phone: 011 40604830-31, M:882695888 Fax: +91 11 4060 4831 info@neevenergy.in, Jitendra Sahu <jsahu@neevenergy.com>	
	LIGHTING FIXTURES (LED)	2	HI01	HAVELLS INDIA LIMITED	ORG TOWERS , 2D SECTOR-126, NOIDA- 201301	GIRISH KUMAR SHRIVASTAVA +91-9810528922, girish.srivastava@havells.com\	
	LIGHTING FIXTURES (LED)	3	B05	BAJAJ ELECTRICALS	BAJAJ ELECTRICALS LTD. ENGINEERING & PROJECTS BU (NORTH) 3rd FLOOR, GULMOHARHOUSE, COMMUNITY CENTRE 161/B-4, GAUTAM NAGAR, YUSUF SARAI NEW DELHI – 110049	CONTACT PERSON : Mr. S. SREEMANY. SR. MANAGER (PROJECTS) CONTACT DETAILS : (+91) 9871025705. MAIL ID : srabans@bajajelectricals.com;	
	LIGHTING FIXTURES (LED)	4	SR01	SURYA ROSHNI LIMITED		011-25810093 ; 9810071832 (Akhilesh Agrawal) aagrawal@sroshni.com	
	LIGHTING FIXTURES (LED)	5	P01	PHILIPS	9TH FLOOR,DLF 9B, DLF CYBER CITY, DLF PHASE-III,GURGAON-122002	01244606001, Sharad (+919871150447), Mr. Guruseelan M 8939693949, Mr Ashish Sethi 9007077089	
	LIGHTING FIXTURES (LED)	6	HP01	M/s HPL ELECTRIC & POWER PVT. LTD	M/S HPL ELECTRIC & POWER PVT. LTD. PLOT NO. 76-B,PHASE-IV, SEC-57, HSIIDC, INDL AREA , KUNDLI, DIST.- SONENPAT (HARYANA) - 131028	mohitsharma@hplindia.com, Mr. Nitesh Verma 8851036938, Mr Ajay lakra 9560045423	
	LIGHTING FIXTURES (LED)	7	INS1	INSTA POWER	PLOT NO. - 457 PHASE - V, UDYOG VIHAR, GURGAON - 122016	124-4124000, Mr amit Bhardwar: 8800508090	
	LIGHTING FIXTURES (LED)	8	PT13	Pyrotech Electronics Pvt. Ltd.	M/s Pyrotech Electronics Pvt. Ltd.(Unit -1) Led Light, Sensor Division F-16A, Road No.3 Mewar Industrial Area, Madri Udaipur -313003, Rajasthan,	Concern Person – Mr. Praveen sisodiya : 9314310042(psisodia@pyrotechllighting.com) Ms Ritika 9509245814	
	LIGHTING FIXTURES (LED)	9	HN13	M/s Halonix Technologies Limited	M/s Halonix Technologies Limited B-31 , Phase –II, Noida Distt. Gautam Budh Nagar (U.P.) Pin- 201305	Mr. Mohit Gautam 'Tel: +919568152111 'mohit.gautam@halonix.co.in'; M: 9891868793'rahul.singh@halonix.co.in'	
	LIGHTING FIXTURES (LED)	10	JA13	M/s JAQUAR & COMPANY PVT. LTD.	M/s JAQUAR & COMPANY PVT. LTD. Plot No.3 , Sector M-11, IMT Manesar. Gurgaon: 122050 Haryana	Mr. Dhruv Kumar 'Tel: +919350043727 dhruv.kumar@jaquar.com ; gaurav.bhalla@jaquar.com : 9582950282	
	LIGHTING FIXTURES (LED)	11	CR13	M/s CROMPTON GREAVES CONSUMER ELECTRICALS LTD.	M/s CROMPTON GREAVES CONSUMER ELECTRICALS LTD.Tower-3, 1st Floor, East Wing Equinox Business Park LBS Marg, Kurla (West), Mumbai-400070	Mr S L Sivakumar 'Sivakumar L' <sivakumar.sl@crompton.co.in> M: 9176609363	
	LIGHTING FIXTURES (LED)	12	WI13	M/s WIPRO ENTERPRISES PRIVATE LTD.	M/s WIPRO ENTERPRISES PRIVATE LTD. L-8, MIDC Waluj, Aurangabad-431136, Maharashtra, India	Ms Dhanya K K 'dhanya.kk8@wipro.com' M 9891815476, Mr Puneet kalia 'puneet.kalia@wipro.com'	
	LIGHTING FIXTURES (LED)	13	NI13	M/s Nessa Illumination Technologies Pvt. Ltd.	M/s Nessa Illumination Technologies Pvt. Ltd.36/A Devraj Industrial Park, Opp. Sameep Fabrics, Pipalaj Pirana Road, Piplaj, Ahmedabad	Mr. Dhaval Shah <dhalval@nessa.in> M 9825650354, Mr. Akshat Khare <akshat@nessa.in> M: 9016111723	
	LIGHTING FIXTURES (LED)	14	FE13	M/s. Forus Electric Pvt. Ltd.	M/s. Forus Electric Pvt. Ltd. B-313, Okhla Industrial Area, Phase-1, New delhi-110020	Mr. Amit Bharadwaj <amit.bharadwaj@foruselectric.co m> M 8800508090, Mr. Uttam Goyal <uttam@foruselectric.com> M: 8527652687	
	LIGHTING FIXTURES (LED)	15	OE13	M/s. ORIENT ELECTRIC LIMITED.	C- 130, Sector-63, Noida-201301, Uttar Pradesh. D-209, Sector-63, Noida-201301, Uttar Pradesh	Birjendra Kumar Yadav <birjendra.yadav@orientelectric.com> P. +91-120-4894900 , +91-9599848491	
	LIGHTING FIXTURES (LED)	16	ME13	M/s Mika Engineers	Survey no. 47, shed no. 2, AGHAI, Shahpur-wada road, AGHAI Thane, Maharashtra-421601	"deepak" <deepak@mikaengineers.com>M OB: 8976737543	
	LIGHTING FIXTURES (LED)	17	KI13	M/s Kalingia Illuminaton Pvt Ltd.	15/3/2 SITE-IV SAHIBABAD INDUSTRIAL AREA GHAZIABAD UP 201010	'Bidyut Mandal' <bidyut.mandal@kalingialights.com> (M: 9555367941 / 9315029882), 'Suresh Shiromani' <suresh.shiromani@kalingialights.com>, 'info@kalingialights.com', 'kalingia@kalingialights.com'	
	LIGHTING FIXTURES (LED)	18	LL13	Ledure Lightings Limited	Registered Office Address: 115, First Floor, Devika Tower Nehru Place, New Delhi - 110091 Works Address: A-40, Sector-58, Noida, Gautam Buddha Nagar, Uttar Pradesh -201301	Mr. Umang Aggarwal Email ID: tenders@ledure.com; Ph. No.: 9313370712	

ITEM CODE	ITEM/SERVICE DESCRIPTION	SL NO.	VENDOR CODE	VENDOR NAME	ADDRESS	PHONE	REMARKS
ES41	LIGHTING FIXTURES (FLAME PROOF)	1	HI01	HAVELLS INDIA LIMITED	QRG TOWERS , 2D SECTOR-126, NOIDA- 201301	GIRISH KUMAR SHRIVASTAVA +91-9810528922	
	LIGHTING FIXTURES (FLAME PROOF)	2	B05	BAJAJ ELECTRICALS	BAJAJ ELECTRICALS LTD. ENGINEERING & PROJECTS BU (NORTH) 3rd FLOOR, GULMOHARHOUSE, COMMUNITY CENTRE 161/B-4, GAUTAM NAGAR, YUSUF SARAI NEW DELHI – 110049	CONTACT PERSON : Mr. S. SREEMANY. SR. MANAGER (PROJECTS) CONTACT DETAILS : (+91) 9871025705. MAIL ID : srabans@bajajelectricals.com;	
	LIGHTING FIXTURES (FLAME PROOF)	3	E1206	BALIGA ELECTRICALS	63A, CP RAMASWAMY ROAD, PB NO 6910, CHENNAI-600018	44-24995505,22680990-4, Mr. Vipin kumar (8939880502, baligadel@baliga.com)	
ES42	LIGHTING LAMP (NON LED)	1	WP01	WIPRO LTD.	WIPRO CONSUMER CARE AND LIGHTING, 5TH FLOOR, GODREJ ETERNIA -C, OLD PUNE-	020-66098700	
	LIGHTING LAMP (NON LED)	2	E1050	ESSEN DEINKI	FLAT NO. 502, SKYLINE HOUSE 85, NEHRU PLACE NEW DELHI	9818338922	
	LIGHTING LAMP (NON LED)	3	B05	BAJAJ ELECTRICALS	BAJAJ ELECTRICALS LTD. ENGINEERING & PROJECTS BU (NORTH) 3rd FLOOR, GULMOHARHOUSE, COMMUNITY CENTRE 161/B-4, GAUTAM NAGAR, YUSUF SARAI NEW DELHI – 110049	CONTACT PERSON : Mr. S. SREEMANY. SR. MANAGER (PROJECTS) CONTACT DETAILS : (+91) 9871025705. MAIL ID : srabans@bajajelectricals.com;	
	LIGHTING LAMP (NON LED)	4	INS1	INSTA POWER	PLOT NO. - 457 PHASE - V, UDYOG VIHAR, GURGAON - 122016	124-4124000	
	LIGHTING LAMP (NON LED)	5	P01	PHILIPS	9TH FLOOR,DLF 9B, DLF CYBER CITY, DLF PHASE III,GURGAON-122002	01244606001, Sharad (+919871150447)	
	LIGHTING LAMP (NON LED)	6	HI01	HAVELLS INDIA LIMITED	QRG TOWERS , 2D SECTOR-126, NOIDA- 201301	GIRISH KUMAR SHRIVASTAVA +91-9810528922	
	LIGHTING LAMP (NON LED)	7	HP01	HPL	M/S HPL ELECTRIC & POWER PVT. LTD. PLOT NO. 76-B,PHASE-IV, SEC-57, HSIIDC, INDL. AREA , KUNDLI, DIST. - SONEPAT (HARYANA) - 131028	mohitsharma@hplindia.com'	
	LIGHTING LAMP (NON LED)	8	SR01	SURYA ROSHNI LIMITED	PADMA TOWER, RAJENDRA PLACE, RAJENDRA PLACE NEW DELHI	011-25810093 ; 9810071832 (Akhilesh Agrawal) aagrawal@sroshni.com	
	LIGHTING LAMP (NON LED)	9	HN13	M/s Halonix Technologies Limited	M/s Halonix Technologies Limited B-31 , Phase –II, Noida Distt. Gautam Budh Nagar (U.P.) Pin- 201305	Mr. Mohit Gautam 'Tel: +919568152111 'mohit.gautam@halonix.co.in'; 'rahul.singh@halonix.co.in'	
ES43	LIGHTING LAMP (LED)	1	NE01	Neev Luminaries	D-115 , OKHLA INDUSTRIAL AREA, PHASE-1 NEW DELHI – 110020	Phone: +91 11 4060 4830 Fax: +91 11 4060 4831 info@neevenenergy.in	
	LIGHTING LAMP (LED)	2	HI01	HAVELLS INDIA LIMITED	QRG TOWERS , 2D SECTOR-126, NOIDA- 201301	GIRISH KUMAR SHRIVASTAVA +91-9810528922	
	LIGHTING LAMP (LED)	3	B05	BAJAJ ELECTRICALS	BAJAJ ELECTRICALS LTD. ENGINEERING & PROJECTS BU (NORTH) 3rd FLOOR, GULMOHARHOUSE, COMMUNITY CENTRE 161/B-4, GAUTAM NAGAR, YUSUF SARAI NEW DELHI – 110049	CONTACT PERSON : Mr. S. SREEMANY. SR. MANAGER (PROJECTS) CONTACT DETAILS : (+91) 9871025705. MAIL ID : srabans@bajajelectricals.com;	
	LIGHTING LAMP (LED)	4	SR01	SURYA ROSHNI LIMITED	PADMA TOWER, RAJENDRA PLACE, RAJENDRA PLACE NEW DELHI	011-25810093 ; 9810071832 (Akhilesh Agrawal) aagrawal@sroshni.com	
	LIGHTING LAMP (LED)	5	P01	PHILIPS	9TH FLOOR,DLF 9B, DLF CYBER CITY, DLF PHASE III,GURGAON-122002	01244606001, Sharad (+919871150447)	
	LIGHTING LAMP (LED)	6	HP01	M/S HPL ELECTRIC & POWER PVT. LTD	M/S HPL ELECTRIC & POWER PVT. LTD. PLOT NO. 76-B,PHASE-IV, SEC-57, HSIIDC, INDL. AREA , KUNDLI, DIST. - SONEPAT (HARYANA) - 131028	mohitsharma@hplindia.com	
	LIGHTING LAMP (LED)	7	INS1	INSTA POWER	PLOT NO. - 457 PHASE - V, UDYOG VIHAR, GURGAON - 122016	124-4124000	
	LIGHTING LAMP (LED)	8	PT13	Pyrotech Electronics Pvt. Ltd.	M/s Pyrotech Electronics Pvt. Ltd.(Unit -1) Led Light, Sensor Division F-16A, Road No.3 Mewar Industrial Area, Madri Udaipur -313003, Rajasthan,	Concern Person – Mr. Praveen sisodiya (psisodiya@pyrotechlighting.com) Ankit Kumar Sr. Engineer(North Region -Sales & Marketing) # +91- 7340061769, 8287897309	
	LIGHTING LAMP (LED)	9	HN13	M/s Halonix Technologies Limited	M/s Halonix Technologies Limited B-31 , Phase –II, Noida Distt. Gautam Budh Nagar (U.P.) Pin- 201305	Mr. Mohit Gautam 'Tel: +919568152111 'mohit.gautam@halonix.co.in'; 'rahul.singh@halonix.co.in'	
ES44	LIGHTING POLES	1	E1033	BOMBAY TUBE & POLES CO.	BOMBAY TUBES & POLES CO. 2ND LANE, DARUKHANA, PLOT NO. 100, MAZGAON, MUMBAI - 10	Tel. : +91 22 23729802, email ID: btpc1954@hotmail.com	
	LIGHTING POLES	2	E1118	RIDHDHI POLES	4/5 INDUSTRIAL ESTATE, GORWA, VADODRA- 390016	0265 - 2283768	
	LIGHTING POLES	3	MK01	MIKA ENGINEERS	BRANCH OFFICE : 'D'-101, DHEERAJ HERITAGE RESIDENCY II, SHASTRI NAGAR, SANTACRUZ (W), MUMBAI 400 054. WORKS : AT POST AGHAI, SHED NO. 2, VILLAGE AGHAI JILLA, SHAHPUR, DIST. THANE 421 601 TEL : 02527-249066/70 CELL : 099230 74373	Director : Mr. Asgar Karimi Email: asgar@mikaengineers.com;mika@ mtnl.net.in Telfax : 022-26610081/82/83/84 Tel : 02527-249066/70 Cell : 099230 74373	
	LIGHTING POLES	4	K02	KL INDUSTRIES	B1 1001 LOK GAURAV, LBS MARG, VIKHROLI WEST, MUMBAI - 400083	(91)-9821013736 (91)-22-25774272	
	LIGHTING POLES	5	B05	BAJAJ ELECTRICALS	BAJAJ ELECTRICALS LTD. ENGINEERING & PROJECTS BU (NORTH) 3rd FLOOR, GULMOHARHOUSE, COMMUNITY CENTRE 161/B-4, GAUTAM NAGAR, YUSUF SARAI NEW DELHI – 110049	CONTACT PERSON : Mr. S. SREEMANY. SR. MANAGER (PROJECTS) CONTACT DETAILS : (+91) 9871025705. MAIL ID : srabans@bajajelectricals.com;	

ITEM CODE	ITEM/SERVICE DESCRIPTION	SL NO.	VENDOR CODE	VENDOR NAME	ADDRESS	PHONE	REMARKS
	LIGHTING POLES	6	TL01	TLL	M/S TRANSRIL LIGHTING LIMITED (TLL), GAMMON INDIA LIMITED 2ND FLOOR , CENTRIC PLAZA, PLOT NO.8 POCKET-4, SECTOR-11 DWARKA , NEW DELHI -110075	hemant.jain@transrailtd.com'	
ES45	LIGHTING SWITCH , SOCKET & S/F UNIT	1	F04	ELEXPRO ELECTRICALS PVT/ LTD.	C 1/27 & 37 GIDC KABILPORE NAVSARI-396424	02637-265140, Mr. Jssk kumar	
	LIGHTING SWITCH , SOCKET & S/F UNIT	2	E1012	ANCHOR	STEEL HOUSE, B WING, PLOT NO. 24, MAHAL INDUSTRIAL ESTATE, MAHAKALI CAVES ROAD, NEAR PAPER BOX, ANDHERI (E), MUMBAI, MAHARASHTRA- 400093	022-30418888.	
	LIGHTING SWITCH , SOCKET & S/F UNIT	3	E1076	KAYCEE	KAYCEE INDUSTRIES LTD., C/O-CMS COMPUTERS LTD., 35A, REAR BLDG., KILOKARI, NEW DELHI-110014	Rajiv Sharma-9312004687	
	LIGHTING SWITCH , SOCKET & S/F UNIT	4	L01	L&T	32, SHIVAJI MARG, P.O. BOX- 6223, NEW DELHI-110015	011-41419554/59	
	LIGHTING SWITCH , SOCKET & S/F UNIT	5	S01	SIEMENS	RC-IN I S NR DEL AREA, JIL BUILDING, TOWER-B, PLOT NO. 78, SECTOR 18, GURGAON-122015, INDIA	0124-2842000, 9873424331 amit.bhadauria@siemens.com	
	LIGHTING SWITCH , SOCKET & S/F UNIT	6	E1068	INDO ASIAN	B-24, PHASE - II , NOIDA - 201305, U.P.	120-3042222	
ES46	LIGHTING TRANSFORMER	1	E1021	AUTOMATIC ELECTRIC LTD.	ADDRESS : 96 AB LONAVLA INDUSTRIAL ESTATE	Phone : +91 2114323665 Fax : +91 2114273482	
	LIGHTING TRANSFORMER	2	E1066	INDCOIL	PLOT NO. A- 150/ 151, 23RD U ROAD, WAGLE ESTATE, THANE WEST, CST RD, FRIENDS COLONY, HALLOW PUL, KURLA WEST, MUMBAI, MAHARASHTRA 400070	Phone:022 2583 8305	
	LIGHTING TRANSFORMER	3	E1103	POWER PACK ENTERPRISES	POWER PACK ENTERPRISES MR. NEHAL SHAH / MR. SHARAD SHAH (PARTNER) NO. 3, JAYSHREE SADAN, 1ST FLOOR, OLD NAGARDAS ROAD, ANDHERI EAST MUMBAI - 400069, MAHARASHTRA, INDIA	Call Us:08447573761 Mobile: +(91)-9821787821 +(91)-9821035604	
	LIGHTING TRANSFORMER	4	E1155	VIJAY ELECTRICALS LTD.	6-3-648/1&2, OFF RAJ BHAVAN ROAD, SOMAJIGUDA, HYDERABAD - 500 082. ANDHRA PRADESH, INDIA.	Vijay Electricals Mr. Bharat Giri / Ajay Giri (CEO) B 79, Gali No. 60, Sanjay Colony, Sector- 23 Faridabad - 121005, Haryana, India Call Us: 09953353612 websales@vijaielctricals.com	
	LIGHTING TRANSFORMER	5	E1057	GILBERT & MAXWELL	WORKS PLOT G-28 , M.I.D.C., AMBAD NASHIK - 422010, MAHARASHTRA, INDIA	Mr. Sanjeev Kulkarni, (Marketing Manager) Cell: 9822586724 sanjeevkulkarni@gilbert-maxwell.in Phone : + 91 - 253 - 238 25 51 Fax : + 91 - 253 - 238 25 52	
	LIGHTING TRANSFORMER	6	K18	KAPPA ELECTRICALS	KAPPA ELECTRICALS, KAPPA CONSOLIDATED PVT. LTD., SOUTHERN ELECTRIKS 14, CART TRACK ROAD, MADUVANKARAI, CHENNAI - 600 042, INDIA.	PHONE: +91 - 44 - 22454709, 22454516, 22450794, 22450795 FAX: +91 - 44 - 22351662, 22451693 E-MAIL: mira@kappaelectricals.com sales@kappaelectricals.com	
	LIGHTING TRANSFORMER	7	AIE01	Ames Impex Electricals Pvt. Ltd	C-1B/1207, PHASE IV, GIDC NARODA, AHMEDABAD, GUJARAT 382330	Phone:079 2282 1648	
ES47	LOCAL PUSH BUTTON STATION (NON FLAME PROOF)	8	A35	GE-POWER	KAMAK TOWER, 3RD FLOOR, PLOT NO. 12-A, TVK INDUSTRIAL ESTATE, EKKADUTHANGAL, GUINDY, CHENNAI-600032	044-49681447	
	LOCAL PUSH BUTTON STATION (NON FLAME PROOF)	9	E1019	ASIATIC	A-58 NARAINA IND. AREA, PHASE-I , NEW DELHI 110028	011 - 25796330, 25796617	
	LOCAL PUSH BUTTON STATION (NON FLAME PROOF)	10	C01	C&S ELECTRIC LTD.	222, OKHLA IND. ESTATE, PH-III, NEW DELHI-110020	011 - 25793021	
	LOCAL PUSH BUTTON STATION (NON FLAME PROOF)	11	E1051	EVERGREEN ENGG. CO.	EVERGREEN ENGG COMPANY WORKS-5, PLOT NO. 9,10,11,12, SURVEY NO. 242, CHINCH PADA, VASAI EAST-401208	(0250) 6458250	
	LOCAL PUSH BUTTON STATION (NON FLAME PROOF)	12	E1143	TECKNIC CONTROLS	703, MADHAVA, BANDRA, KURLA COMPLEX, BANDRA EAST, MUMBAI, MAHARASHTRA 400051	022-42532507/00 022-24451648	
	LOCAL PUSH BUTTON STATION (NON FLAME PROOF)	13	E1053	EX-PROTECTA LIGHTING EQUIPMENT	305-306, GIDC ESTATE, VITHAL UDYOGNAGAR - 388121 DIST. ANAND, GUJARAT 388121 INDIA	02692-237823	
	LOCAL PUSH BUTTON STATION (NON FLAME PROOF)	14	E1206	BALIGA ELECTRICALS	63A, CP RAMASWAMY ROAD, PB NO 6910, CHENNAI-600018	44-24995505,22680990-4	
	LOCAL PUSH BUTTON STATION (NON FLAME PROOF)	15	E1210	ENPRO ENGG.	NO 995P, DIAMOND PLAZA, 2ND FLOOR, 12TH MAIN ROAD, ANNA NAGAR, CHENNAI-40	044 - 42611526 / 42170338 / 26262716 enproengg@enproengineering.com	
	LOCAL PUSH BUTTON STATION (NON FLAME PROOF)	16	E1132	STERLING SWGR CONTROL PVT.LTD.	P.O. BOX NO. 17023, SORAB HOUSE, 2ND FLOOR, 555, S.B. MARG, DADAR, MUMBAI - 400028, MAHARASHTRA, INDIA	91-22-24222297/24222298/24224236	
	LOCAL PUSH BUTTON STATION (NON FLAME PROOF)	17	F04	ELEXPRO ELECTRICALS PVT/ LTD.	C 1/27 & 37 GIDC KABILPORE NAVSARI-396424	02637-265140, Mr. Jssk kumar	
	LOCAL PUSH BUTTON STATION (NON FLAME PROOF)	18	E1153	VAISHNO(HOTLINE SWGR & CONTROL)	G-19, SECTOR - 11, NOIDA - 201301, UTTAR PRADESH, INDIA	8377805157 9818338922	
	LOCAL PUSH BUTTON STATION (NON FLAME PROOF)	19	J01	JASPER ENGINEERES PVT. LTD.	A-23, SECTOR - 8, NOIDA-201301	0120-4033520/533	
	LOCAL PUSH BUTTON STATION (NON FLAME PROOF)	20	KM1	KMG ATOZ SYSTEMS	C-49, SECTOR-81-NOIDA-201305	120-4207920, 08527897328	
	LOCAL PUSH BUTTON STATION (NON FLAME PROOF)	21	E05	UNILEC ENGINEERS PVT. LTD.	BEHRAMPUR INDUSTRIAL AREA, BEGAMPUR KHATOLA ROAD, GURGAON-122001	0124-4030247,248, 4559700, 9911087173	


ITEM CODE	ITEM/SERVICE DESCRIPTION	SL NO.	VENDOR CODE	VENDOR NAME	ADDRESS	PHONE	REMARKS
	LOCAL PUSH BUTTON STATION (NON FLAME PROOF)	22	B04	BCH	20/4, MATHURA ROAD, FARIDABAD, HARYANA-121006	0129-4293000	
	LOCAL PUSH BUTTON STATION (NON FLAME PROOF)	23	E1035	CANDS	1/202, ANSA INDUSTRIAL ESTATE, SAKI VIHAR ROAD, SAKINAKA, ANDHERI (EAST), MUMBAI-72	022-28570858	
	LOCAL PUSH BUTTON STATION (NON FLAME PROOF)	24	S01	SIEMENS	RC-IN I S NR DEL AREA, JIL BUILDING, TOWER-B, PLOT NO. 78, SECTOR 18, GURGAON-122015, INDIA	0124-2842000, 9873424331 amit.bhadauria@siemens.com	
	LOCAL PUSH BUTTON STATION (NON FLAME PROOF)	25	S03	SCHNEIDER ELECTRIC INDIA PVT. LTD.	9TH FLOOR, BLDG. NO. 10, TOWER-C, DLF CYBER CITY, PH-II, GURGAON-122002	0124-3940400	
	LOCAL PUSH BUTTON STATION (NON FLAME PROOF)	26	E1143	TECKNIC CONTROLS	703, MADHAVA, BANDRA, KURLA COMPLEX, BANDRA EAST, MUMBAI, MAHARASHTRA 400051	022-42532507/00 022-24451648	
	LOCAL PUSH BUTTON STATION (NON FLAME PROOF)	27	E1148	UNITED ELECTRIC	97 UDYOG VIHAR PHASE-I, GURGAON 122015, HARYANA	124 4002970 72	
	LOCAL PUSH BUTTON STATION (NON FLAME PROOF)	28	SR01	M/s Shrenik & Co.	39A/3, PANCHRATNA INDUSTRIAL ESTATE, SARKHEJ-BAVLA ROAD, CHANGODAR, AHMEDABAD – 382 213		
ES48	LOCAL PUSH BUTTON STATION (FLAME PROOF)						
ES49	LIGHTING PANEL (FLAME PROOF)	1	E1206	BALIGA ELECTRICALS	63A,CP RAMASWAMY ROAD, PB NO 6910, CHENNAI-600018	44-24995505,22680990-4	
	LIGHTING PANEL (FLAME PROOF)	2	SS01	SUDHIR SWITCHGEAR	305/6, APEJAY HOUSE, 130, BOMBAY SAMACHAR MARG, MUMBAI - 400 023. INDIA	Telephone Nos. : 40460000 (100 lines) Fax Nos. : ++91-22-22049381 Email : md@sudhirschwitchgears.com ; works@sudhirschwitchgears.com ; scud@vsnl.com	
ES50	LIGHTING PANEL (NON FLAME PROOF)	1	E1091	MIKA ENGINEERS	D-101, DHEERAJ HERITAGE RESIDENCY II, SHASTRI NAGAR, SANTACRUZ (W), MUMBAI 400 054.	Director : Mr. Asgar Karimi E-mail : mika@mtnl.net.in Telfax : 022-26610081/82/83/84 Tel : 02527-249066/70 Cell : 099230	
	LIGHTING PANEL (NON FLAME PROOF)	2	F04	ELEXPRO ELECTRICALS PVT/ LTD.	C 1/27 & 37 GIDC KABILPORE NAVSARI-396424	02637-265140, Mr. Jssk kumar	
	LIGHTING PANEL (NON FLAME PROOF)	3	VC01	Vidhyut Controls (India) Pvt. Ltd.	M/S VIDHYUT CONTROL (I) PVT.LTD. D-12 & 13, SECTOR-17,KAVI NAGAR INDL.AREA,GHAZIABAD – 201002 (DELHI NCR) U.P. INDIA	0120-4186400, 0120-4186423, 8527005590(DK GUPTA)	
	LIGHTING PANEL (NON FLAME PROOF)	4	KM1	KMG ATOZ SYSTEMS	"ATOZ HOUSE" C-49, SECTOR-81, GAUTAM BUDDH NAGAR, NOIDA – 201 305 U. P. (INDIA)	Tel : +91-120-4207920 Fax : +91-120-4207921, 4327958 Phone:098 10 802710	
	LIGHTING PANEL (NON FLAME PROOF)	5	E05	UNILEC ENGINEERS PVT. LTD.	BEHRAMPUR INDUSTRIAL AREA, BEGAMPUR KHATOLA ROAD, GURGAON-122001	0124-4030247,248, 4559700, 9911087173	
	LIGHTING PANEL (NON FLAME PROOF)	6	AVA01	AVAIODS TECHNOVATORS LTD.	PLOT NO.25 ,SECTOR-3,JMT-MANESAR, GURGEON-122050 (HARYANA)	KRISHNA KALRA- 09958096168	
	LIGHTING PANEL (NON FLAME PROOF)	7	ACE01	Adroit Control Engineers Pvt.Ltd.	M/S ADROIT CONTROL ENGINEERS PVT.LTD. PLOT-3, KRISHNA INDL. AREA, SECTOR-25 FARIDABAD – 121004	011-47600700, 0129-4251400	
	LIGHTING PANEL (NON FLAME PROOF)	8	JC01	JACKSON ENGINEERS	A-43, HOSEIRY COMPLEX, OPPOSITE NSEZ, NOIDA-201305	0120-4302600, 2568923,27	
	LIGHTING PANEL (NON FLAME PROOF)	9	MIL01	MILESTONE SWITCHGEARS PVT. LTD.	MILESTONE SWITCHGEARS PVT. LTD. 97, UDYOG VIHAR, PHASE-1, GURGEON HARYANA - 122016	Phone Nos.: 0124-4994900 (30 Lines) Fax: 0124-4002973 Email: jaideep.ahuja@milestonesindia.com URL: www.milestonesindia.com	
	LIGHTING PANEL (NON FLAME PROOF)	10	PCS01	Positronics Pvt. Ltd.	POSITRONICS HOUSE ,882/ 2, G.I.D.C. MAKARPURA,VADODARA 390010 GUJARAT	+91 265 2642496 Fax: +91 265 264 7033 / 234 0944 E- mail : info@positronicsindia.com Website:www.positronicsindia.com	
	LIGHTING PANEL (NON FLAME PROOF)	11	PYRE01	Pyrotech Electronics Pvt. Ltd.	M/s Pyrotech Electronics Pvt. Ltd.(Unit -1) Led Light, Sensor Division F-16A, Road No.3 Mewar Industrial Area, Madri Udaipur -313003, Rajasthan,	Concern Person – Mr. Praveen sisodiya (psisodia@pyrotechlighting.com) Ankit Kumar Sr. Engineer(North Region -Sales & Marketing) # +91- 7340061769, 8287897309	
ES51	MCB	1	E1088	MDS SWITCHGEAR LTD	314-317SHAH NAHAR ESTATE	011 - 25793021	
	MCB	2	E1068	INDO ASIAN	B-24, PHASE - II , NOIDA - 201305, U.P.	120-3042222	
	MCB	3	S03	SCHNEIDER ELECTRIC INDIA PVT. LTD.	9TH FLOOR, BLDG. NO. 10, TOWER-C, DLF CYBER CITY, PH-II, GURGAON-122002	0124-3940400	
	MCB	4	E1120	S&S POWER SWITCHGEAR LTD,	NEW NO. 67, OLD NO. 19, DR. RANGA ROAD, MYLAPORE, CHENNAI - 600004	044 - 24988056, 044 - 24988057, 044 - 24988058	
ES52	MCC (FIXED TYPE)	1	S02	SPACEAGE SWITCHGEARS LTD.	68 & 13-A INDUSTRIAL DEVELOPMENT COLONY, MEHRAULI ROAD GURGAON, HARYANA-122001	0124-2302711, 4085091	
	MCC (FIXED TYPE)	2	A01	ASSOCIATED SWGR & PROJ.LTD.	C-10, UPSIDC, INDUSTRIAL AREA, SITE-IV, KASNA ROAD, GREATER NOIDA-201306	0120-4294618,19,20 Aspho@gmail.com	
	MCC (FIXED TYPE)	3	B04	BCH	20/4, MATHURA ROAD, FARIDABAD, HARYANA-121006	0129-4293000	
	LV MOTORS (NON FLAME PROOF)	1	A24	ABB	14, MATHURA ROAD, FARIDABAD, HARYANA-121003	0129-2567580, 09871799449	
	LV MOTORS (NON FLAME PROOF)	2	E1027	BHARAT BULEE LTD.	BHARAT BULEE LIMITED, 1ST FLOOR, 7-B, RAJINDRA PARK, PUSA ROAD, NEW DELHI - 110 060.	Tel.: + 91 (11) 25816931-33, 35 & 36 DT: +91 25724318 Fax: + 91 (11) 25819640 M:+ 91	
	LV MOTORS (NON FLAME PROOF)	3	C02	CROMPTON GREAVES	3RD FLOOR, EXPRESS BUILDING,9-10, BAHADUR SHAH ZAFAR MARG, NEAR ITO CROSSING,NEW DELHI-110002, INDIA	91 11 23460700 - 999 Sunil.Das@cgglobal.com	

ITEM CODE	ITEM/SERVICE DESCRIPTION	SL NO.	VENDOR CODE	VENDOR NAME	ADDRESS	PHONE	REMARKS
ES53	LV MOTORS (NON FLAME PROOF)	4	A35	GE-POWER	KAMAK TOWER, 3RD FLOOR, PLOT NO. 12-A, TVK INDUSTRIAL ESTATE, EKKADUTHANGAL, GUINDY, CHENNAI-600032	044-49681447	
	LV MOTORS (NON FLAME PROOF)	5	K01	KIRLOSKAR ELECTRIC CO LTD.	P.O. BOX 5555 , MALLESWARAM WEST ,BANGALORE 560055	Tel: +91-80-23374865 Fax: +91-80-23377706	
	LV MOTORS (NON FLAME PROOF)	6	L04	LAXMI HYDRAULICS PVT. LTD	129/130, INDUSTRIAL ESTATE PATIL NAGAR, HOTGI ROAD SOLAPUR-413003, MAHARASHTRA	0217- 2357001-005	APPROVED UPTO 200KW
	LV MOTORS (NON FLAME PROOF)	7	M01	MARATHON	MARATHON ELECTRIC INDIA PRIVATE LTD.SECTOR - 11, MODEL TOWN, FARIDABAD - 121006	Ph: +91-129-2286421, 2265340, 4006601 to 4006610	
	LV MOTORS (NON FLAME PROOF)	8	A35	NGEF	POCKET NO.10, FLAT NO. 37 & 38, EXPANDABLE DDA FLATS, NASIRPUR DWARKA,	Ph: (011) 2539 7763	
	LV MOTORS (NON FLAME PROOF)	9	E1115	RAJINDRA ELECT INDUSTRIES	14 SHAH IND. ESTATE VEERA DESAI RD, ANDHERI(W) MUMBAI-400053	91-22-26730823, 26730789; 91)-(22)-26730154	
	LV MOTORS (NON FLAME PROOF)	10	S01	SIEMENS	RC-IN I S NR DEL AREA, JIL BUILDING, TOWER-B, PLOT NO. 78, SECTOR 18, GURGAON-122015, INDIA	0124-2842000, 9873424331 amit.bhadauria@siemens.com	
	LV MOTORS (NON FLAME PROOF)	11	HM06	HAVELLS INDIA LIMITED	Plot No. SP 181-189, Industrial Area Phase-II, Neemrana, Dist. Alwar, Rajasthan-301705, India	M: 9644355595 Mr. Kapil Jain (L): +91120-4772317 (Kapil Jain <Kapil.Jain@havells.com>)	APPROVED UPTO 200KW
ES54	LV MOTORS (FLAME PROOF)	1	E1115	RAJINDRA ELECT INDUSTRIES	14 SHAH IND. ESTATE VEERA DESAI RD, ANDHERI(W) MUMBAI-400053	91-22-26730823, 26730789; 91)-(22)-26730154	
ES55	MODULAR SWITCH BOARD	1	E1012	ANCHOR	STEEL HOUSE, B WING, PLOT NO. 24, MAHAL INDUSTRIAL ESTATE, MAHAKALI CAVES ROAD, NEAR PAPER BOX, ANDHERI (E), MUMBAI, MAHARASHTRA - 400093	022-30418888.	
	MODULAR SWITCH BOARD	2	F04	ELEXPRO ELECTRICALS PVT/ LTD.	C 1/27 & 37 GIDC KABILPORE NAVSARI-396424	02637-265140, Mr. Jssk kumar	
	MODULAR SWITCH BOARD	3	HI01	HAVELLS INDIA LIMITED	QRG TOWERS , 2D SECTOR-126, NOIDA- 201301	GIRISH KUMAR SHRIVASTAVA +91-9810528922	
ES56	OIL TEMP INDICATOR	1	E1101	PERFECT CONTROLS	BLOCK NO. 7, NORTH ROAD, WEST C.I.T. NAGAR, CHENNAI - 600035, INDIA.	Phone: (91-44) 24341043, 24330387, 42867651 Fax: (91-44) 24345075	
	OIL TEMP INDICATOR	2	E1105	PRECIMEASURE	M/S. PRECIMEASURE CONTROLS PVT. LTD. 168/C, INDUSTRIAL SUBURB, PEENYA 3RD PHASE, BANGALORE - 560058. KARNATAKA, INDIA	Phone EPABX: +91-80-42602702. Fax: +91-80-41552205 E-mail: info@precimeasure.com	
ES57	PROTECTION - RELAYS (PNEUMATIC)	1	S01	SIEMENS	RC-IN I S NR DEL AREA, JIL BUILDING, TOWER-B, PLOT NO. 78, SECTOR 18, GURGAON-122015, INDIA	0124-2842000, 9873424331 amit.bhadauria@siemens.com	
	PROTECTION - RELAYS (PNEUMATIC)	2	S03	SCHNEIDER ELECTRIC INDIA PVT. LTD.	9TH FLOOR, BLDG. NO. 10, TOWER-C, DLF CYBER CITY, PH-II, GURGAON-122002	0124-3940400	
	PROTECTION - RELAYS (PNEUMATIC)	3	A35	GE-MULTILINE, GE INDIA INDUSTRIAL PVT. LTD.	NO. 90- B, ELECTRONICS CITY, HOSUR ROAD, BENGALURU - 560016, KARNATAKA	(080) 41314617, 9945478935	
	PROTECTION - RELAYS (PNEUMATIC)	4	SC01	SCHWEITZER ENGG. LAB (SEL)	406, BHIKAJI CAMA BHAVAN, BHIKAJI CAMA PLACE, BHIKAJI CAMA PLACE, MOHAMMADPUR, RK PURAM, NEW DELHI, DL 110066	011 4152 7899	
	PROTECTION - RELAYS (PNEUMATIC)	5	C01	C&S ELECTRIC LTD.	222, OKHLA IND. ESTATE, PH-III, NEW DELHI-110020	011-3088 7520-29	
	PROTECTION - RELAYS (PNEUMATIC)	6	G01	ALSTOM LTD	A-7, SEC-65, NOIDA	0120-479 0000	
	PROTECTION - RELAYS (PNEUMATIC)	7	A24	ABB	14, MATHURA ROAD, FARIDABAD, HARYANA-121003	0129-2567580, 09871799449	
	PROTECTION - RELAYS (PNEUMATIC)	8	C01	AVK-SEG & CONTROLS(I) LTD	C-60, NOIDA PHASE-II	6918834-37	
	PROTECTION - RELAYS (NUMERICAL)	1	S01	SIEMENS	RC-IN I S NR DEL AREA, JIL BUILDING, TOWER-B, PLOT NO. 78, SECTOR 18, GURGAON-122015, INDIA	0124-2842000, 9873424331 amit.bhadauria@siemens.com	
ES58	PROTECTION - RELAYS (NUMERICAL)	2	S03	SCHNEIDER ELECTRIC INDIA PVT. LTD.	9TH FLOOR, BLDG. NO. 10, TOWER-C, DLF CYBER CITY, PH-II, GURGAON-122002	0124-3940400	
	PROTECTION - RELAYS (NUMERICAL)	3	A35	GE-MULTILINE, GE INDIA INDUSTRIAL PVT. LTD.	NO. 90- B, ELECTRONICS CITY, HOSUR ROAD, BENGALURU - 560016, KARNATAKA	(080) 41314617, 9945478935	
	PROTECTION - RELAYS (NUMERICAL)	4	SC01	SCHWEITZER ENGG. LAB (SEL)	406, BHIKAJI CAMA BHAVAN, BHIKAJI CAMA PLACE, BHIKAJI CAMA PLACE, MOHAMMADPUR, RK PURAM, NEW DELHI, DL 110049	011 4152 7899	
	RECEPTACLES - DECORATIVE	1	E1012	ANCHOR	STEEL HOUSE, B WING, PLOT NO. 24, MAHAL INDUSTRIAL ESTATE, MAHAKALI CAVES ROAD, NEAR PAPER BOX, ANDHERI (E), MUMBAI, MAHARASHTRA - 400093	022-30418888.	
ES59	RECEPTACLES - DECORATIVE	2	F04	ELEXPRO ELECTRICALS PVT/ LTD.	C 1/27 & 37 GIDC KABILPORE NAVSARI-396424	02637-265140, Mr. Jssk kumar	
	RECEPTACLES - DECORATIVE	3	B05	BAJAJ ELECTRICALS	BAJAJ ELECTRICALS LTD. ENGINEERING & PROJECTS BU (NORTH) 3rd FLOOR, GULMOHARHOUSE, COMMUNITY CENTRE 161/B-4, GAUTAM NAGAR, YUSUF SARAI NEW DELHI - 110049	CONTACT PERSON : Mr. S. SREEMANY. SR. MANAGER (PROJECTS) CONTACT DETAILS : (+91) 9871025705. MAIL ID : srbans@bajajelectricals.com;	
	RECEPTACLES - DECORATIVE	4	A03	AJMERIA INDUSTRIES & ENGG. WORKS	AJMERIA INDL. AND ENGG. WORKS. AJMERIA HOUSE, A-61 / KHAIRANE MIDC. , TTC INDL. AREA, NAVI MUMBAI - 400705.	Tel : 022 27620299 / 97 / 96 'mail@ajmera.net	
	RECEPTACLES - DECORATIVE	5	E1137	SUSHIL ENGG CORP.	D-7, GHATKOPAR INDUSTRIAL ESTATE, OFF LBS MARG, GHATKOPAR (WEST), AMRUT NAGAR RD, AMRUT NAGAR, GHATKOPAR WEST, MUMBAI, MAHARASHTRA 400086	022 2500 7976	
ES60	RESISTOR FOR DC STARTERS	1	B04	BCH	20/4, MATHURA ROAD, FARIDABAD, HARYANA-121006	0129-4293000	
	RESISTOR FOR DC STARTERS	2	C01	C&S ELECTRIC LTD.	222, OKHLA IND. ESTATE, PH-III, NEW DELHI-110020	011-3088 7520-29	
	RESISTOR FOR DC STARTERS	3	E1119	RSI	60, IND. DEV. COLONY, MEHRAULI ROAD, GURGAON-122001	91 - 124 - 2333442	
	RESISTOR FOR DC STARTERS	4	S04	SPEED-O-CONTROL	C-16, NAND JYOT INDUSTRIAL ESTATE, SAFED POOL, ANDHERI-KURLA ROAD, SAFED POOL, MAGAN NATHURAM RD, SHIVAJI NAGAR, SAKINAKA, MUMBAI, MAHARASHTRA 400072	022 2851 8514	
	RESISTOR FOR DC STARTERS	5	E1137	SUSHIL ENGG CORP.	D-7, GHATKOPAR INDUSTRIAL ESTATE, OFF LBS MARG, GHATKOPAR (WEST), AMRUT NAGAR RD, AMRUT NAGAR, GHATKOPAR WEST, MUMBAI, MAHARASHTRA 400086	022 2500 7976	

ITEM CODE	ITEM/SERVICE DESCRIPTION	SL NO.	VENDOR CODE	VENDOR NAME	ADDRESS	PHONE	REMARKS
ES61	SWITCH BOX	1	E1012	ANCHOR	STEEL HOUSE, B WING, PLOT NO. 24, MAHAL INDUSTRIAL ESTATE, MAHAKALI CAVES ROAD, NEAR PAPER BOX, ANDHERI (E), MUMBAI, MAHARASHTRA - 400093	022-30418888.	
	SWITCH BOX	2	F04	ELEXPRO ELECTRICALS PVT/ LTD.	C 1/27 & 37 GIDC KABILPORE NAVSARI-396424	02637-265140, Mr. Jssk kumar	
	SWITCH BOX	3	B05	BAJAJ ELECTRICALS	BAJAJ ELECTRICALS LTD. ENGINEERING & PROJECTS BU (NORTH) 3rd FLOOR, GULMOHARHOUSE, COMMUNITY CENTRE 161/B-4, GAUTAM NAGAR, YUSUF SARAI NEW DELHI – 110049	CONTACT PERSON : Mr. S. SREEMANY. SR. MANAGER (PROJECTS) CONTACT DETAILS : (+91) 9871025705. MAIL ID : srabans@bajajelectricals.com;	
	SWITCH BOX	4	A03	AJMERIA INDUSTRIES & ENGG. WORKS	AJMERIA INDL. AND ENGG. WORKS. AJMERIA HOUSE, A-61 / KHAIRANE MIDC. , TTC INDL. AREA, NAVI MUMBAI – 400705.	Tel : 022 27620299 / 97 / 96 'mail@ajmera.net	
	SWITCH BOX	5	SB02	S.B. ELECTRICAL ENGINEERING CORPORATION	03, SARDAR GRIHA BUILDING, LOHAR CHAWAL, MUMBAI-400002	022- 22069831; 022-66637259	
ES62	TERMINAL BLOCKS	1	C01	WAGO-CONTROLS	C 27, GREATER NOIDA, SECTOR 58, C BLOCK, SECTOR 58, NOIDA, UTTAR PRADESH 201307	0120-2580409/10	
	TERMINAL BLOCKS	2	E1038	CONNECT WELL	309A/4, 3RD FLOOR, KALKAJI, OKHLA IND AREA PH-2, GOVINDPURI, NEW DELHI, DL 110019	9811881085 09871419996 011-65908877	
	TERMINAL BLOCKS	3	E1047	ELMEX CONTROLS PVT. LTD.	12,G.I.D.C.ESTATE,MUKARPURA ROAD,VADODARA-390010	9374631074	
	TERMINAL BLOCKS	4	E1050	ESSEN DEINKI	FLAT NO. 502, SKYLINE HOUSE 85, NEHRU PLACE NEW DELHI	011-26217060	
	TERMINAL BLOCKS	5	E1142	TECHNOPLAST	OPP.I.M.INTER COLLEGE, BEGUM SARAI KHURD ROAD, AMROHA - 244221, U.P.	PH:- 05922 264006 CELL NO:- 9012676000, 9319520799, 9319582467	
	TERMINAL BLOCKS	6	PME-01	M/s PHOENIX MECANO LTD.,	388 BHARE, TALUKA MULSHI, POST GHOTAWADE, PIRANGOOT, INDUSTRIAL AREA, PUNE-412115	TEL.- +912066745000 Awasthi(09971119006) Tel: ++91 20 6674 5103, Mobile: +91 90499 95985, Fax: ++91 20 6674 5126 contact person : Vishwa bandhu E-mail:d.gupta@pmipl-online.com ;admin@pmipl-online.com	
	TERMINAL BLOCKS	7	E1050	ESSEN DEINKI	FLAT NO. 502, SKYLINE HOUSE 85, NEHRU PLACE NEW DELHI	011-26217060	
ES63	TIMERS - PNEUMATIC	1	B04	BCH	20/4, MATHURA ROAD, FARIDABAD, HARYANA-121006	0129-4293000	
	TIMERS - PNEUMATIC	2	G01	ALSTOM LTD	A-7, SEC-65, NOIDA	0120-479 0000	
	TIMERS - PNEUMATIC	3	L01	L&T	32, SHIVAJI MARG, P.O. BOX- 6223, NEW DELHI-110015	011-41419554/59	
	TIMERS - PNEUMATIC	4	E1144	TELEMECHANIQUE/ SCHNEIDER ELECTRIC INDIA PVT. LTD.	9TH FLOOR, BLDG. NO. 10, TOWER-C, DLF CYBER CITY, PH-II, GURGAON-122002	0124-3940400	TAKEN OVER BY SCHNEIDER
	TIMERS - PNEUMATIC	5	S03	SCHNEIDER ELECTRIC INDIA PVT. LTD.	9TH FLOOR, BLDG. NO. 10, TOWER-C, DLF CYBER CITY, PH-II, GURGAON-122002	0124-3940400	
	TIMERS - PNEUMATIC	6	E01	ELECTRONIC AUTOMATION PVT. LTD.	20, KHB INDUSTRIAL AREA YELAHANKA BANGLORE-560064	080 -28567561 / 080 -28567562 / 080 -42802345	
ES64	TIMERS - ELECTRONIC	1	E1050	ESSEN DEINKI	FLAT NO. 502, SKYLINE HOUSE 85, NEHRU PLACE NEW DELHI	011-26217060	
ES65	TRANSDUCERS	1	E1021	AUTOMATIC ELECTRIC LTD.	ADDRESS : 96 AB LONAVLA INDUSTRIAL ESTATE	Phone : +91 2114323665 Fax : +91 2114273482	
	TRANSDUCERS	2	E1202	SOUTHERN TRANSDUCERS	INTERTECH B-83, FLATTED FACTORY COMPLEX, NEAR MODI MILLS, OKHLA, NEW DELHI-110020	Mr. Gurmohit Singh 011-41020365 / 9891402128	
ES66	WINDING TEMP INDICATOR	1	E1101	PERFECT CONTROLS	OFFICE ADDRESS: 7, NORTH ROAD, WEST C.I.T. NAGAR, CHENNAI - 600035, INDIA.	Phone: (91-44) 24341043, 24330387, 42867651; Fax: (91-44) 24345075	
	WINDING TEMP INDICATOR	2	E1105	PRECIMEASURE	M/S. PRECIMEASURE CONTROLS PVT. LTD. 168/C, INDUSTRIAL SUBURB, PEENYA 3RD PHASE, BANGALORE - 560058, KARNATAKA, INDIA	Phone EPABX: +91-80-42602702. Fax: +91-80-41552205 E-mail: info@precimeasure.com	
ES67	RECEPTACLE (FLAME PROOF)	1	E1206	BALIGA ELECTRICALS	63A, CP RAMASWAMY ROAD, PB NO 6910, CHENNAI-600018	44-24995505,22680990-4	
	RECEPTACLE (FLAME PROOF)	2	SS01	SUDHIR SWITCHGEAR	305/6, APEEJAY HOUSE, 130, BOMBAY SAMACHAR MARG, MUMBAI - 400 023. INDIA	Telephone Nos. : 40460000 (100 lines) Fax Nos. : ++91-22-22049381 Email : md@sudhirschwitchgears.com ; works@sudhirschwitchgears.com ; scud@vsnl.com	
	RECEPTACLE (FLAME PROOF)	3	FFP01	FCG FLAME PROOF CONTROL GEAR	A1/53, SHAH & NAHAR INDUSTRIAL ESTATE, SITARAM JADHAV ROAD, LOWER PAREL (W), MUMBAI-400 013	Mr. N. G. Patel CMD Office No: +91-22-43443200 Fax No: +91-22-24960313	
ES68	RECEPTACLE (NON FLAME PROOF)	1	A03	AJMERIA INDUSTRIES & ENGG. WORKS	AJMERIA INDL. AND ENGG. WORKS. AJMERIA HOUSE, A-61 / KHAIRANE MIDC. , TTC INDL. AREA, NAVI MUMBAI – 400705.	Tel : 022 27620299 / 97 / 96 'mail@ajmera.net	
	RECEPTACLE (NON FLAME PROOF)	2	C02	CROMPTON GREAVES	3RD FLOOR, EXPRESS BUILDING,9-10, BAHADUR SHAH ZAFAR MARG, NEAR ITO CROSSING,NEW DELHI-110002, INDIA	91 11 23460700 - 999 'Sunil.Das@cgglobal.com	
	RECEPTACLE (NON FLAME PROOF)	3	E1207	CYCLO ELECTRIC DEVICE & SERV.CO.	: A-3, NEAR ANTHEM BIOSCIENCE, KSSIDC INDUSTRIAL AREA, BOMMASANDRA, BOMMASANDRA INDUSTRIAL AREA, BANGALORE, KARNATAKA 560099	Mr. H.Jaishanker +919845039081, 080 - 27833102, 080 - 27833103 : +91 80 41460985 'cycloelectric@gmail.com	
	RECEPTACLE (NON FLAME PROOF)	4	B04	BCH	20/4, MATHURA ROAD, FARIDABAD - 121006, HARYANA, INDIA	0(129)-4063000, 9015800189(Ramesh Giri) 'ramesh.giri@bchindia.com	
	RECEPTACLE (NON FLAME PROOF)	5	B02	BEST & CROMPTON	BEST & CROMPTON ENGINEERING LTD 28C, AMBATTUR INDUSTRIAL ESTATE (NORTH) AMBATTUR, CHENNAI - 600 098	Ph : +91 44 4551 4724 , MRKT DGM Mr. Vi Raj: 9840593411 'bestcromptonviraj@gmail.com	

ITEM CODE	ITEM/SERVICE DESCRIPTION	SL NO.	VENDOR CODE	VENDOR NAME	ADDRESS	PHONE	REMARKS
ES69	EMERGENCY LIGHTING UNIT (FIXED & PORTABLE TYPE)-NON FLAME PROOF	1	B05	BAJAJ ELECTRICALS	BAJAJ ELECTRICALS LTD. ENGINEERING & PROJECTS BU (NORTH) 3rd FLOOR, GULMOHARHOUSE, COMMUNITY CENTRE 161/B-4, GAUTAM NAGAR, YUSUF SARAI NEW DELHI – 110049	CONTACT PERSON : Mr. S. SREEMANY . SR. MANAGER (PROJECTS) CONTACT DETAILS : (+91) 9871025705. MAIL ID : srabans@bajajelectricals.com	
	EMERGENCY LIGHTING UNIT (FIXED & PORTABLE TYPE)-NON FLAME PROOF	2	PEP05	PROLITE AUTOGLO LIMITED,	PROLITE AUTOGLO LTD 25 SINGH INDUSTRIAL ESTATE NO. 3, RAM MANDIR ROAD,, GOREGAON (W), MUMBAI, MAHARASHTRA 400104, INDIA	022-67868100 sales@prollite.com	
ES70	EMERGENCY LIGHTING UNIT (FIXED & PORTABLE TYPE)-FLAME PROOF	1					
ES71	24V SUPPLY MODULE WITH COMPLETE ACCESSORIES	1	E1103	POWER PACK ENTERPRISES	POWER PACK ENTERPRISES MR. NEHAL SHAH / MR. SHARAD SHAH (PARTNER) NO. 3, JAYSHREE SADAN, 1ST FLOOR, OLD NAGARDAS ROAD, ANDHERI EAST MUMBAI - 400069, MAHARASHTRA, INDIA	Call Us:08447573761 Mobile: +(91)-9821787821 +(91)-9821035604	
	24V SUPPLY MODULE WITH COMPLETE ACCESSORIES	2	E1066	INDCOIL	ADDRESS: PLOT NO. A- 150/ 151, 23RD U ROAD, WAGLE ESTATE, THANE WEST, CST RD, FRIENDS COLONY, HALLOW PUL, KURLA WEST, MUMBAI, MAHARASHTRA 400070	Phone:022 2583 8305	
	24V SUPPLY MODULE WITH COMPLETE ACCESSORIES	3	AIE01	Ames Impex Electricals Pvt. Ltd	C-1B/1207, PHASE IV, GIDC NARODA, AHMEDABAD, GUJARAT 382330	Phone:079 2282 1648	
ES72	ENERGY METER (ANALOG)	1	B07	BHEL (EDN)	MYSORE ROAD,BANGALORE-560026	080-26998500	
	ENERGY METER (ANALOG)	2	E1129	SIMCO ENGG. LTD	NO. 126, K ROAD, TIRUCHIRAPPALLU -620001, TAMIL NADU	Mr. Madaswamy Muthu +(91)-(431)-4046223 +(91)-(431)-4046210 +(91)-9786600915	
	ENERGY METER (ANALOG)	3	R01	RISHABH INST.PVT LTD	RISHABH INSTRUMENTS PVT. LTD. F-31, MIDC, SATPUR NASHIK - 422007 MAHARASHTRA INDIA	marketing@rishabh.co.in 91-253 2202202/203 Fax: 91 253 2351064	
	ENERGY METER (ANALOG)	4	E1009	AUTOMATIC ELECTRIC LTD.	96 AB LONAVLA INDUSTRIAL ESTATE NANGARGAON, LONAVLA-410401	Phone : +91 2114323665 Fax : +91 2114273482	
	ENERGY METER (ANALOG)	5	CON1	CONZERVE SYSTEMS PVT. LTD.(SCHNEIDER)	87, 1ST FLOOR INDUSTRIAL DEVELOPMENT COLONY (IDC) MEHRAULI ROAD, UGURGAON 122001 HARYANA, INDIA.	4268899, 9910695701	
ES73	ENERGY METER (DIGITAL)	1	CON1	CONZERVE SYSTEMS PVT. LTD.(SCHNEIDER)	87, 1ST FLOOR INDUSTRIAL DEVELOPMENT COLONY (IDC) MEHRAULI ROAD, UGURGAON 122001 HARYANA, INDIA.	4268899, 9910695701	
	ENERGY METER (DIGITAL)	2	NK09	M/s Newtek Electricals	M-90, M.I.D.C. Waluj, Aurangabad 431136, Maharashtra, India	Tel/Fax: +91 240 2551555 E-mail: mkt.north@newtekelectricals.com , sales@newtekelectricals.com Mr Sanjeev Aggarwal (9958897890)	
ES74	AMMETER	1	E1009	AUTOMATIC ELECTRIC LTD.	96 AB LONAVLA INDUSTRIAL ESTATE NANGARGAON, LONAVLA-410401	Phone : +91 2114323665 Fax : +91 2114273482	
	AMMETER	2	R01	RISHABH INST.PVT LTD	RISHABH INSTRUMENTS PVT. LTD. F-31, MIDC, SATPUR NASHIK - 422007 MAHARASHTRA INDIA	marketing@rishabh.co.in 91-253 2202202/203 Fax: 91 253 2351064	
	AMMETER	3	NK09	M/s Newtek Electricals	M-90, M.I.D.C. Waluj, Aurangabad 431136, Maharashtra, India	Tel/Fax: +91 240 2551555 E-mail: mkt.north@newtekelectricals.com , sales@newtekelectricals.com Mr Sanjeev Aggarwal (9958897890)	
ES75	VOLTMETER	1	E1009	AUTOMATIC ELECTRIC LTD.	96 AB LONAVLA INDUSTRIAL ESTATE NANGARGAON, LONAVLA-410401	Phone : +91 2114323665 Fax : +91 2114273482	
		2	R01	RISHABH INST.PVT LTD	RISHABH INSTRUMENTS PVT. LTD. F-31, MIDC, SATPUR NASHIK - 422007 MAHARASHTRA INDIA	marketing@rishabh.co.in 91-253 2202202/203 Fax: 91 253 2351064	
	VOLTMETER	3	NK09	M/s Newtek Electricals	M-90, M.I.D.C. Waluj, Aurangabad 431136, Maharashtra, India	Tel/Fax: +91 240 2551555 E-mail: mkt.north@newtekelectricals.com , sales@newtekelectricals.com Mr Sanjeev Aggarwal (9958897890)	
ES76	MPCB	1	S03	SCHNEIDER ELECTRIC INDIA PVT. LTD.	9TH FLOOR, BLDG. NO. 10, TOWER-C, DLF CYBER CITY, PH-II, GURGAON-122002	0124-3940400	
	MPCB	2	L01	L&T	32, SHIVAJI MARG, P.O. BOX- 6223, NEW DELHI-110015	011-41419554/59	
	MPCB	3	S01	SIEMENS	RC-IN I S NR DEL AREA, JIL BUILDING, TOWER-B, PLOT NO. 78, SECTOR 18, GURGAON-122015, INDIA	0124-2842000, 9873424331 amit.bhadoria@siemens.com	
	MPCB	4	A35	GE-POWER	KAMAK TOWER, 3RD FLOOR, PLOT NO. 12-A, TVK INDUSTRIAL ESTATE, EKKADUTHANGAL, GUINDY, CHENNAI-600032	044-49681447	
	MPCB	5	S03	SCHNEIDER ELECTRIC INDIA PVT. LTD.	9TH FLOOR, BLDG. NO. 10, TOWER-C, DLF CYBER CITY, PH-II, GURGAON-122002	0124-3940400	
	MPCB	6	C01	C&S ELECTRIC LTD.	222, OKHLA IND. ESTATE, PH-III, NEW DELHI-110020	011-3088 7520-29	
ES77	MAGNETIC OIL GAUGE	1	E1134	SUKRUT UDYOG	9/1/A, ERANDAWANE, OPPOSITE MEHENDALE GARAGE, ERANDAWANE, GULAWANI MAHARAJ RD, SWAROOP SOCIETY, VAKIL NAGAR, ERANDAWANE, PUNE, MAHARASHTRA 411004	020 2544 1726	
	MULTIFUNCTION METER	1	CON1	CONZERVE SYSTEMS PVT. LTD./ SCHNEIDER ELECTRIC INDIA PVT. LTD.	87, 1ST FLOOR INDUSTRIAL DEVELOPMENT COLONY (IDC) MEHRAULI ROAD, GURGAON 122001 HARYANA, INDIA.	4268899, 9910695701	TAKEN OVER BY SCHNEIDER

ITEM CODE	ITEM/SERVICE DESCRIPTION	SL NO.	VENDOR CODE	VENDOR NAME	ADDRESS	PHONE	REMARKS
ES78	MULTIFUNCTION METER	2	NK09	M/s Newtek Electricals	M-90, M.I.D.C. Waluj, Aurangabad 431136, Maharashtra, India	Tel/Fax: +91 240 2551555 E-mail: mkt.north@newtekelectricals.com , sales@newtekelectricals.com Mr Sanjeev Aggarwal (9958897890)	
ES79	RCCB	1	C01	C&S ELECTRIC LTD.	222, OKHLA IND. ESTATE, PH-III, NEW DELHI-110020	011-3088 7520-29	
	RCCB	2	S03	SCHNEIDER ELECTRIC INDIA PVT. LTD.	9TH FLOOR, BLDG. NO. 10, TOWER-C, DLF CYBER CITY, PH-II, GURGAON-122002	0124-3940400	
	RCCB	3	S01	SIEMENS	RC-IN I S NR DEL AREA, JIL BUILDING, TOWER-B, PLOT NO. 78, SECTOR 18, GURGAON-122015, INDIA	0124-2842000, 9873424331 amit.bhadauria@siemens.com	
	RCCB	4	A35	GE-POWER	KAMAK TOWER, 3RD FLOOR, PLOT NO. 12-A, TVK INDUSTRIAL ESTATE, EKKADUTHANGAL, GUINDY, CHENNAI-600032	044-49681447	
	RCCB	5	L01	L&T	32, SHIVAJI MARG, P.O. BOX- 6223, NEW DELHI-110015	011-41419554/59	
	RCCB	6	C02	CROMPTON GREAVES	RAIL TRANSPORTATION SYSTEMS,VANDANA BUILDING, 11, TOLSTOY MARG, TOLSTOY MARG, NEW DELHI, DL 110001	011 3041 6300	
ES80	PVC WIRES	BIS APPROVED MAKE					
ES81	PEDESTAL FAN & CEILING FAN	REPUTED MAKE					
ES82	EXIT SIGN (FLAME PROOF)	REPUTED MAKE					
ES83	EXIT SIGN (NON FLAME PROOF)	REPUTED MAKE					
ES84	LADDER	REPUTED MAKE					
ES85	HUME PIPE	REPUTED MAKE					
ES86	PHOTOELECTRIC SWITCH	REPUTED MAKE					
ES87	DICHORIC SPOT LIGHTING FIXTURE	REPUTED MAKE					
ES88	HAND LAMP UNIT	REPUTED MAKE					
ES89	LIGHTING DESIGNER	1	AT13	AVAIDS TECHNOVATORS PVT. LTD.	4A/58, SHANKAR ROAD, NEW DELHI-110060	Mr. Rajendra Panda M: 9910481854 (email: rajendra@avaids.com)	
	LIGHTING DESIGNER	2	BE13	BAJAJ ELECTRICALS LTD.	801 (8th floor), Rustomjee Aspire, Bhanu Shankar Yagnik Marg, Off Eastern Express Highway Sion (E), Mumbai 400022	Mr. S. SREEMANY. SR. MANAGER (PROJECTS) CONTACT DETAILS : (+91) 9871025705. (email: srabans@bajajelectricals.com)	
	LIGHTING DESIGNER	3	KS13	KELSATEK SOLUTIONS PVT. LTD.	50/1 4TH FLOOR, CHURCH STREET, BANGALORE 560001	Mr. S S Mudaliar Sr. VP M: 6380471362 (email: mudaliar@kelsatek.com)	
	LIGHTING DESIGNER	4	SE13	M/s SUMANAM ENGINEERING SERVICES CONSULTANT	1, ADITHYA, KOWDIAR, TRIVANDRUM 695003	Mr. Anshad S Phone: 471-2437588, (email: shaw@sumanam.org)	
	LIGHTING DESIGNER	5	SM13	SPAN MANUFACTURING COMPANY LTD	27 First Floor, Bhiku Building, Murari Ghag Marg, Prabhadevi, Mumbai-400025	Ms Surbhi Jindal M: 9811026321 (email: spanmanufacturing@gmail.com, info@dalighthub.com)	Lighting System designer only for FGD, R&M and Hydro projects
	LIGHTING DESIGNER	6	CL13	CITELUM INDIA PVT. LTD	Y-14A, GREEN PARK MAIN, NEW DELHI-110016	Mr. Satyabrata Meher M: 8155001095, (email: smeher@citelum.in)	Lighting System designer only for FGD, R&M and Hydro projects
	LIGHTING DESIGNER	7	SR13	M/s SURYA ROSHNI LTD	Padma Tower 1, Rajendra Place, New Delhi-110008	Mr. Saurabh Gupta 9999433167, (email: saurabh.gupta@surya.in), AKHILESH AGRAWAL (agrawal@surya.in)	
	LIGHTING DESIGNER	8	HP13	M/s HPL ELECTRIC & POWER PVT. LTD.	WINDSOR BUSINESS PARK, B-1D, SECTOR-10 NOIDA-201301 (UP)	Name : Mr. Mahesh Sharma Designation: Sr. GM (HOD Projects) Email : msharma@hplindia.com Contact : 9818282236 Ashwani Kumar Mob-9971127370 Email: ashwani@hplindia.com	
	LIGHTING DESIGNER	9	ME13	M/s MIKA ENGINEERS.	Survey No.-47, Shed No.-2, Aghal, Shahapur-Wada Road, Village-Aghal, THANE , Pin 421601; MAHARASHTRA	Name : Mr. Deepak Kumar Nayak Email : deepak@mikaengineers.com Contact : 8976737543 Mr. Asgar B Karimi Mob-9820019739 Email: asgar@mikaengineers.com	
	LIGHTING DESIGNER	10	FED13	M/s. Forus Electric Pvt. Ltd.	M/s. Forus Electric Pvt. Ltd. B-313, Okhla Industrial Area, Phase-1, New delhi-110020	Mr. Amit Bharadwaj <amit.bharadwaj@foruselectric.com> M 8800508090, Mr. Uttam Goyal <uttam@foruselectric.com>	
	LIGHTING DESIGNER	11	US13	U. S. CONSULTANTS	U. S. CONSULTANTS C-47, SECOND FL. SECTOR -2, NOIDA - 201301	Mr. Uma Shankar Yadav (US Consultants Accounts <account@usconsultants.in>) M 9999200799	
	LIGHTING DESIGNER	12	PY06	Pyrotech Technologies Pvt. Ltd.	F-16, Road no. 3, Mewar Industrial Area, Madri, Udaipur-313003 RJ(IN), Udaipur Industrial Area, Udaipur, Girwa, Rajasthan, India, 313003	Ms. Ritika Sharma (Asst Manager-Tender & Projects tenderpyrotech@gmail.com) M 9509245814	
ES90	VAF METER (DIGITAL)	1	NK09	M/s Newtek Electricals	M-90, M.I.D.C. Waluj, Aurangabad 431136, Maharashtra, India	Tel/Fax: +91 240 2551555 E-mail: mkt.north@newtekelectricals.com , sales@newtekelectricals.com Mr Sanjeev Aggarwal (9958897890)	
ES91	LED BASED HIGH INTENSITY AVIATION WARNING LIGHTS	1	INS1	M/s INSTA POWER LIMITED	Correspondence Address: M/s Insta Power Limited, S-19, Panch Shila Park, New-Delhi-110017 Manufacturing Unit: M/s Insta Power Limited, Khasra No. 103M, Raipur Industrial Area, Raipur, Bhagwanpur, Roorkee, Uttarakhand-247661	Manu Thakur (electrical1@instapower.com) Deepak Gupta (deepak.gupta@instapower.com) Abhijit R Vaish (abhijit.ra@instapower.com) Satyajit R Vaish (satyajit@instapower.com)	

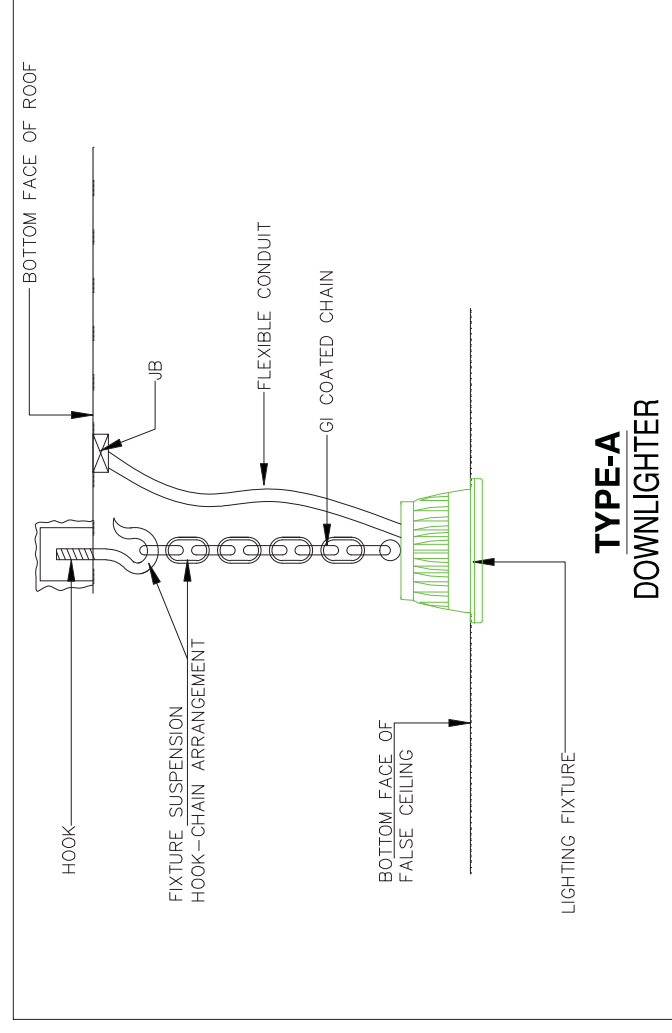
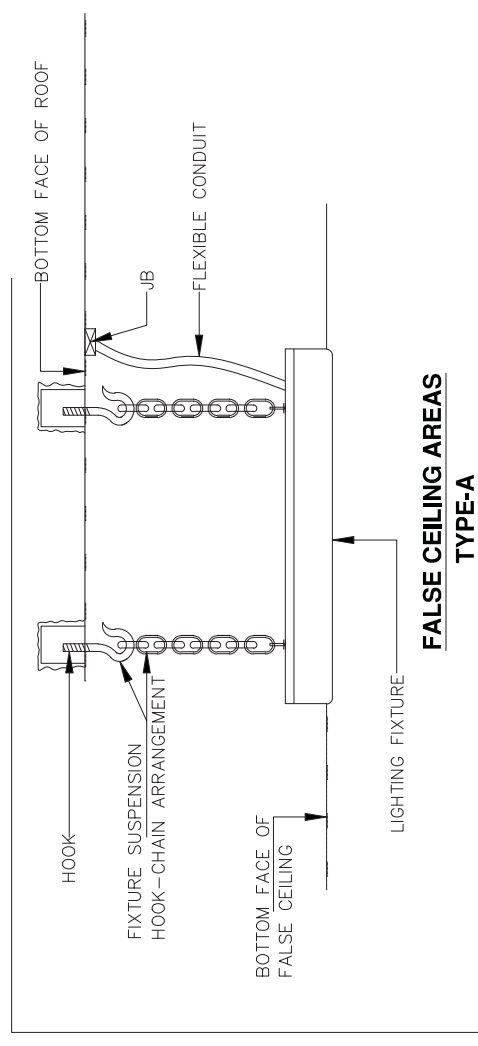
	TECHNICAL SPECIFICATION & DATA SHEET FOR LIGHTING FIXTURES, LAMPS & MISC. ITEMS	Specification No.: PE-TS-APL/MEL-558-E001 Rev. No. 00 Date 19.03.2025
---	--	--

ANNEXURE:E- LIST OF DOCUMENTS TO BE SUBMITTED AFTER AWARD OF CONTRACT

BHEL Drawing No.	Drawing Title	Vendor Sub (Days)*	BHEL comment (Days)	Vendor Sub (Days)#	BHEL and Customer comment/approval (Days)
Primary Documents					
PE-V0-XXX-558-E101	GA DRAWING AND DATA SHEET OF LIGHTING FIXTURES	21	8	8	18
PE-V0-XXX-558-E102	GA DRAWING AND DATA SHEET OF MISC. ITEMS	21	8	8	18
PE-V0-XXX-558-E901	MQP FOR LUMINARIES	21	8	8	18
PE-V0-XXX-558-E905	MQP FOR MISCELLANEOUS ITEMS	21	8	8	18
Secondary Documents	Submission schedule shall be same as Primary documents (after receiving input drawing from BHEL)				
PE-V0-XXX-558-E201	Lighting design Calculation				
PE-V0-XXX-558-E301	Lighting Layout				
PE-V0-XXX-558-E401	Conduit Layout				
PE-V0-XXX-558-E103	MOUNTING ARRANGEMENT LIGHTING FIXTURES				
PE-V0-XXX-558-E104	TYPE TEST REPORTS FOR LIGHTING FIXTURES				
PE-V0-XXX-558-E105	FIELD QUALITY PLAN OF LIGHTING FIXTURES				
PE-V0-XXX-558-E106	MOUNTING ARRANGEMENT OF MISC. ITEMS				
PE-V0-XXX-558-E107	TYPE TEST REPORTS FOR MISC. ITEMS				

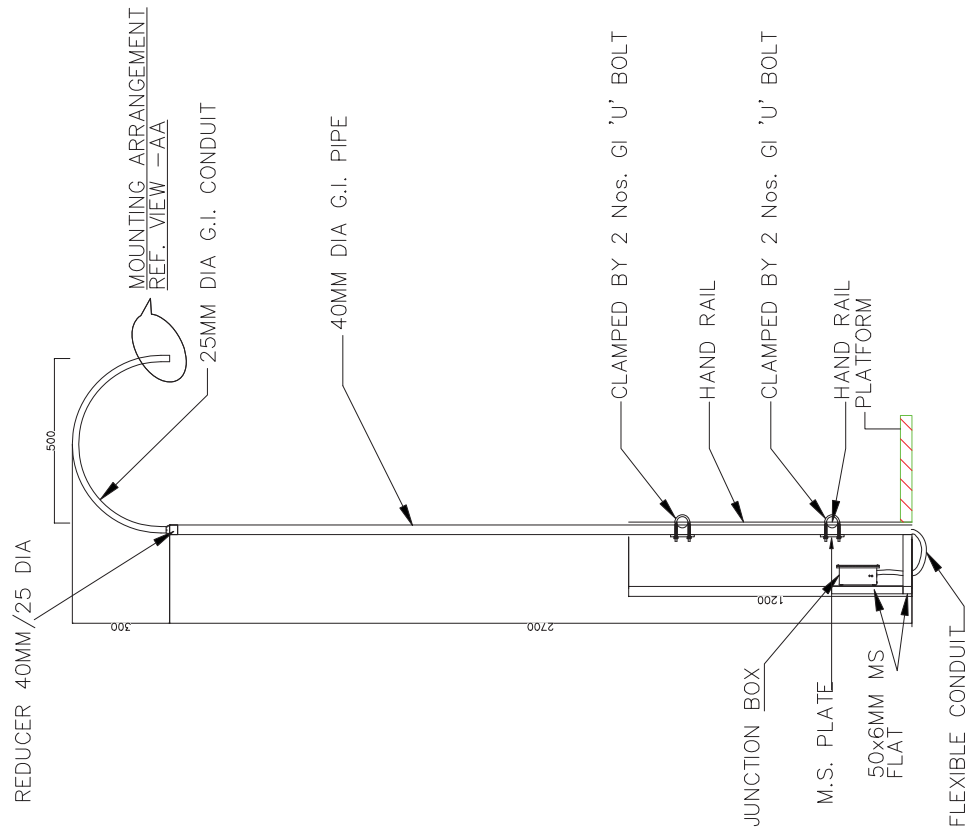
NOTES

- a) * 1st submission within indicated days from date of purchase order
b) # Submission (within indicated days) after incorporating all BHEL comments
c) Primary documents shall be considered for Delay analysis

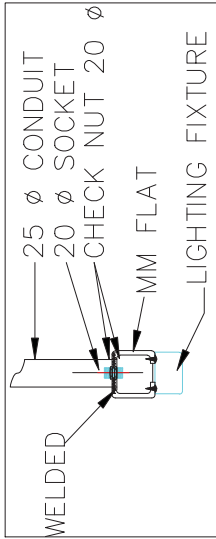
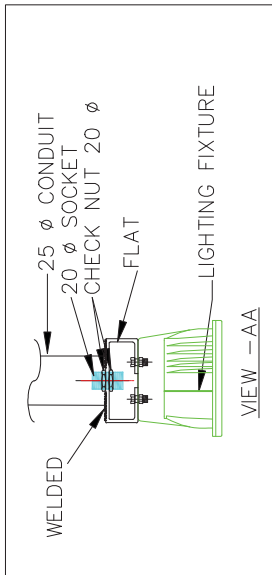
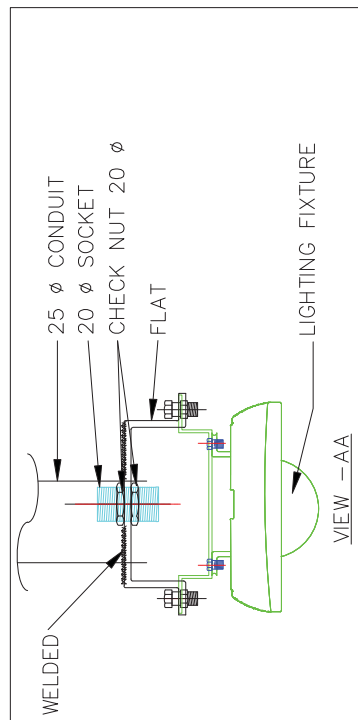


This is a Typical mounting arrangement dwgs/
details for guidance only. Final Mounting
arrangement dwg shall be made by the successful
bidder during detailed Engineering. It is to be noted
that GI Conduit 20mm Dia and Flexible PVC
Coated Conduit, Structural Steel shall be provided
by BHEL. Balance all other accessories clamps/
chains/ clips/ steel rope/ pins etc required for
mounting as per typical mounting arrangement for
their fixtures shall be part of fixtures only and shall
be provided by the Bidders.

1016185/2025/PS-PEM-EL	02	03	04	05	06	07	08
H	G	F	E	D	C	B	A
<div><p>CEILING MOUNTING TYPE-O</p></div>				<div><p>CEILING MOUNTING TYPE-O</p></div>			
<div><p>General Notes:</p><ol style="list-style-type: none">1. Mounting arrangement can be changed/ modified on site as per site requirements.2. In Lighting layout, Mounting arrangement also shown, if any Discrepancy found on both documents than Consult with Design incharge/Site incharge.3. Quantity and Material shown in drawings are indicative only and may be change or vary as per site requirement.4. If any New type of mounting required at site then we can optimized or change the arrangement with prior inform to BHEL site incharge.5. All structural steel parts/supporting parts shall be hot dip galvanized as per B007/S.</div>							
File No. PEM-PGOMM(34)/68/2025-PS-PEM-PGII-2 (Computer No. 165745)				Generated from Office by Shamik Gupta, ENGINEER(SG)-PG II-2-PS-PEM, ENGINEER, BHARAT HEAVY ELECTRICALS LTD on 04/04/2025 09:41 am 05			
A				08			

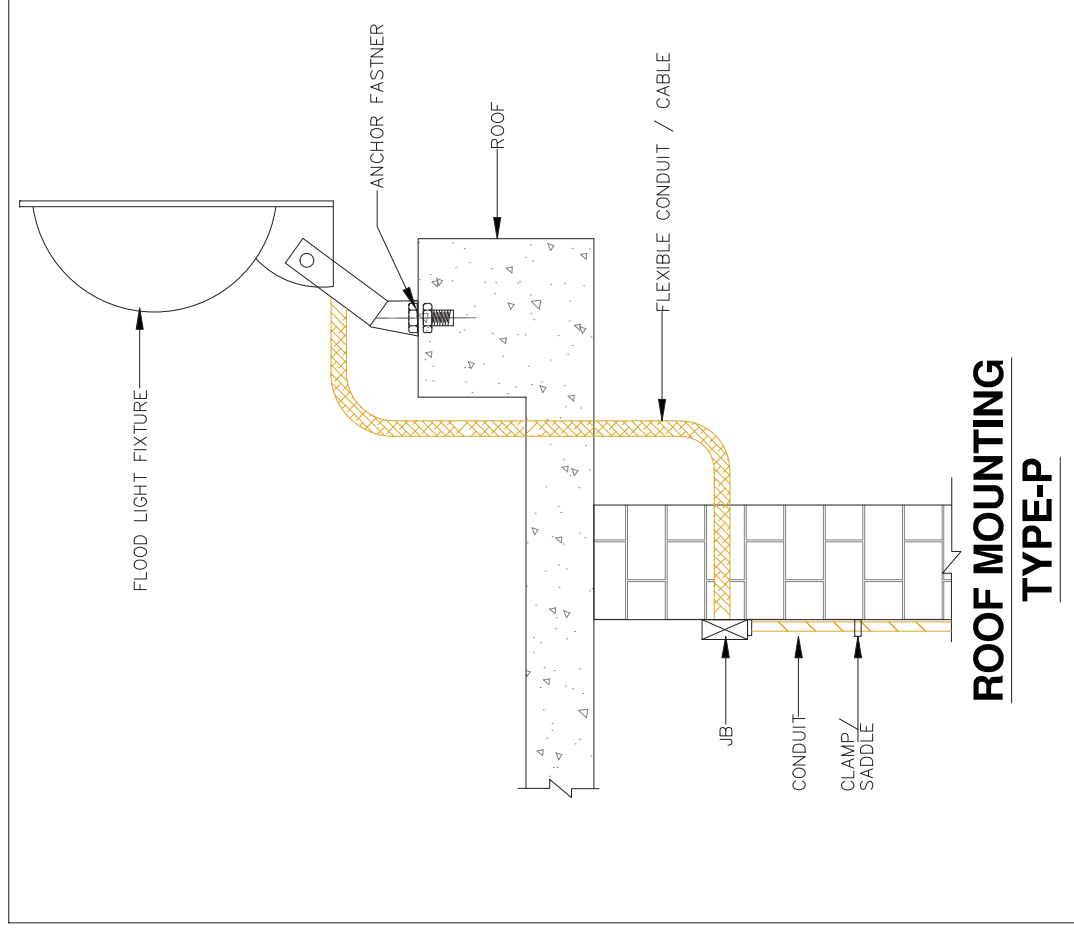


HAND RAIL MOUNTING TYPE-I

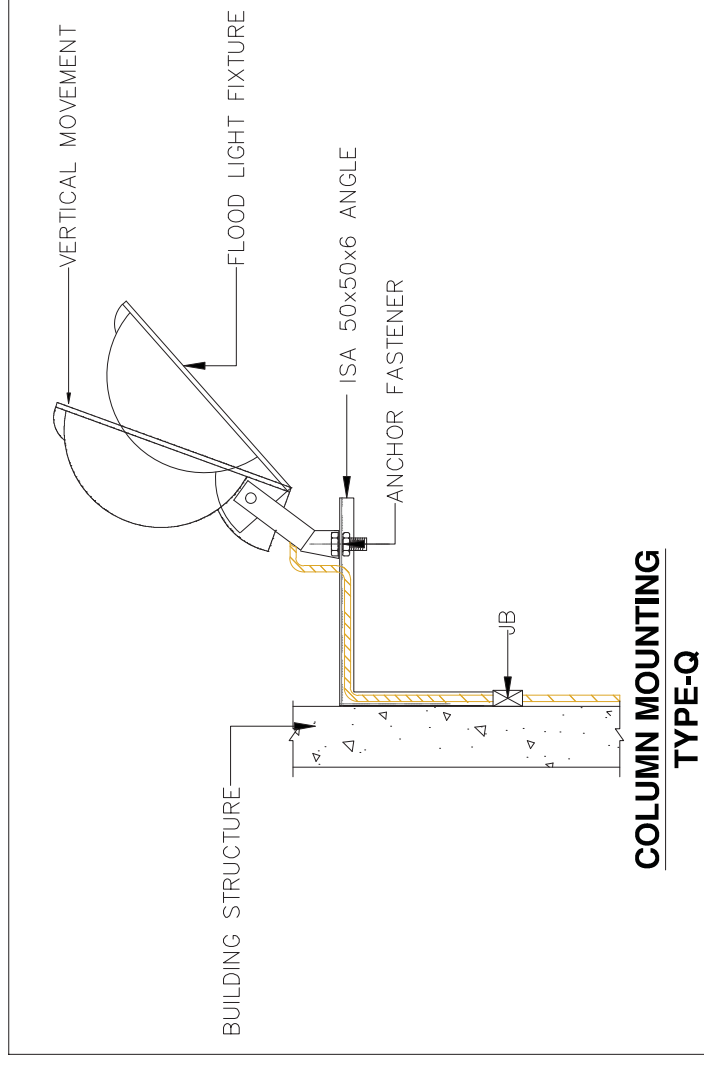


General Notes:

1. Mounting arrangement can be changed/ modified on site as per site requirements.
2. In Lighting layout, Mounting arrangement also shown. If any Discrepancy found on both documents than Consult with Design Incharge/Site Incharge.
3. Quantity and Material shown in drawings are indicative only and may be change or vary as per site requirement.
4. If any new type of mounting required at site than we can optimized or change the arrangement with prior inform to BHEL site incharge.
5. All structural steel parts/supporting parts shall be not dip galvanized as per BQ/QIS.



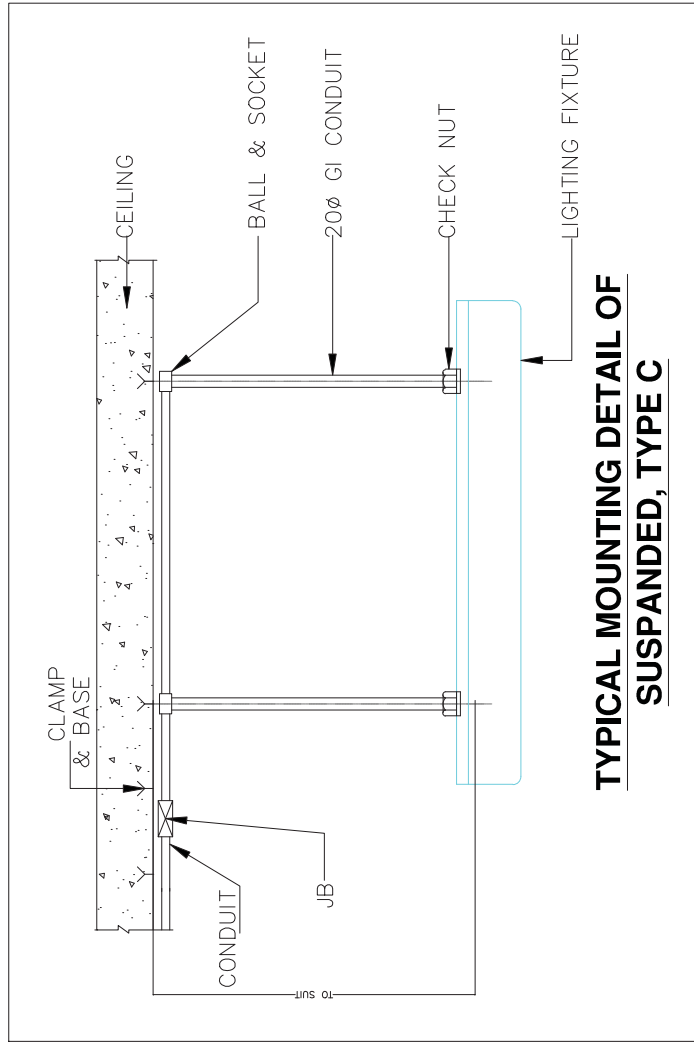
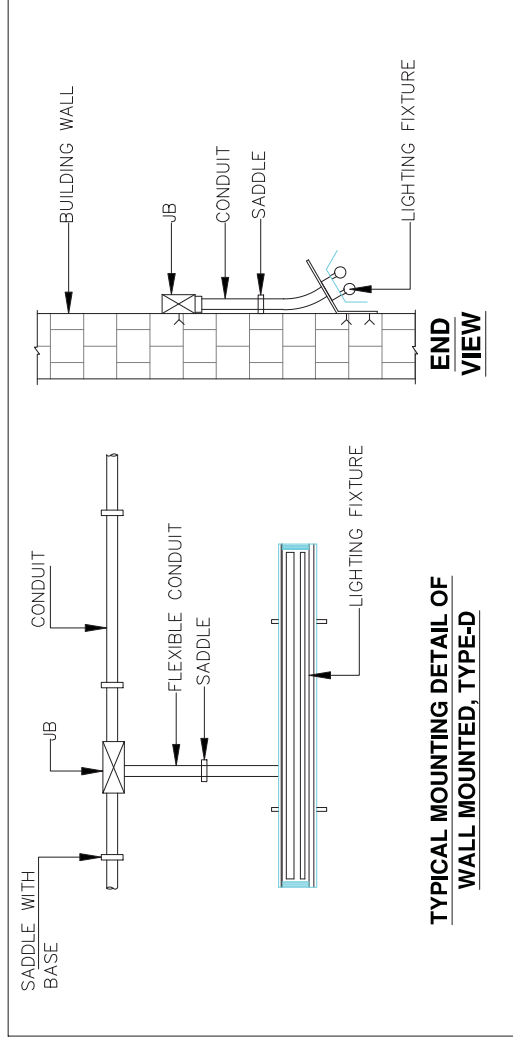
ROOF MOUNTING TYPE-P



COLUMN MOUNTING

General Notes:

1. Mounting arrangement can be changed/ modified on site as per site requirements.
2. In Lighting layout, Mounting arrangement also shown. If any Discrepancy found on both documents than Consult with Design Incharge/Site Incharge
3. Quantity and Material shown in drawings are indicative only and may be change or vary as per site requirement.
4. If any new type of mounting required at site than we can optimized or change the arrangement with prior inform to BHEL site Incharge.
5. All structural steel parts/supporting parts shall be not dip galvanized as per BOQ/IS.



General Notes:

1. Mounting arrangement can be changed/ modified on site as per site requirements.
2. In Lighting layout, Mounting arrangement also shown, if any Discrepancy found on both documents Then Consult with Design Incharge/Site Incharge.
3. Quantity and Material shown in drawings are indicative only and may be change or vary as per site requirement.
4. If any new type of mounting required at site then we can optimized or change the arrangement with prior inform to BHEL site incharge.
5. All structural steel parts supporting parts shall be hot dip galvanized as per BQ/IS.

H

G

F

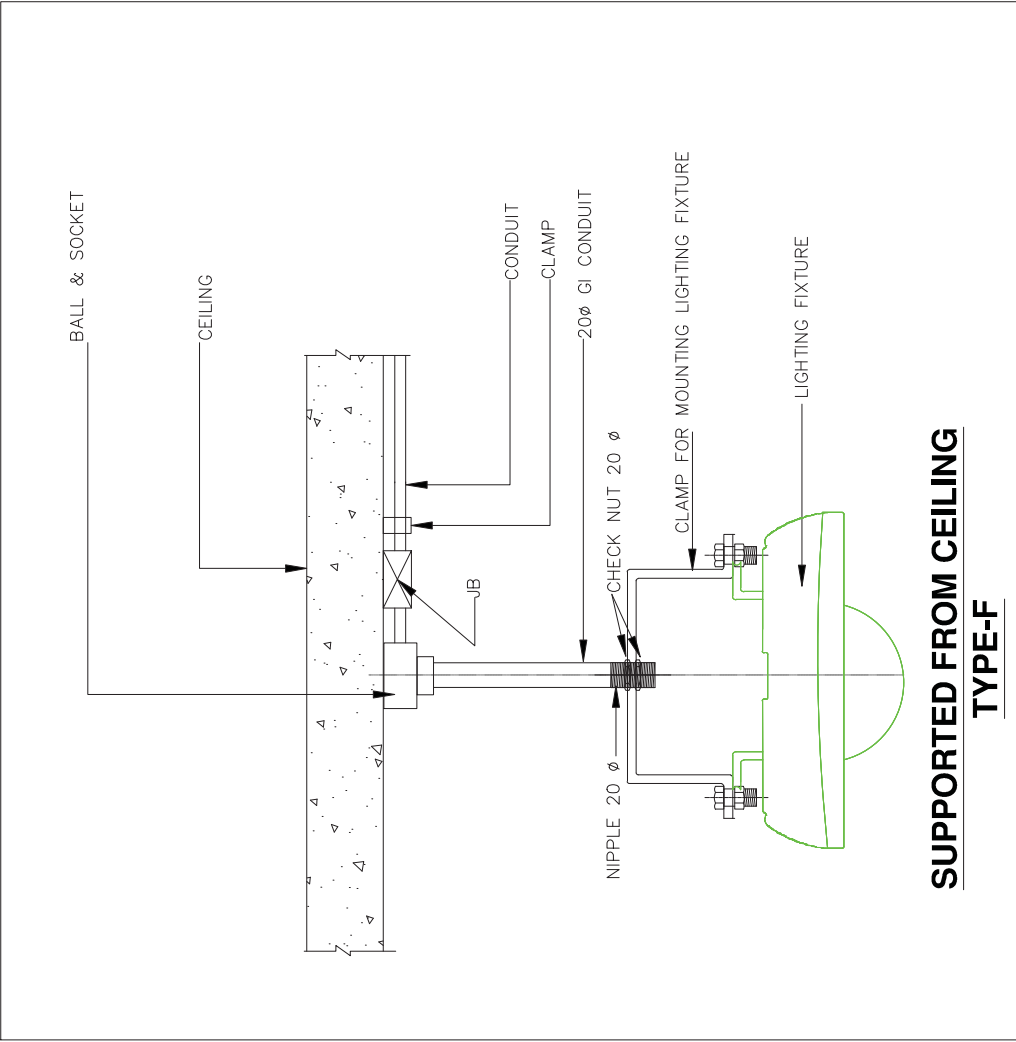
E

D

C

B

A



**SUPPORTED FROM CEILING
TYPE-F**

General Notes:
1. Mounting arrangement can be changed/ modified on site as per site requirements.
2. In Lighting layout, Mounting arrangement also shown. If any Discrepancy found on both documents than Consult with Design incharge/Site incharge.
3. Quantity and Material shown in drawings are indicative only and may be change or vary as per site requirement.
4. If any new type of mounting required at site than we can optimized or change the arrangement with prior inform to BHEL site incharge.
5. All structural steel parts/supporting parts shall be hot dip galvanized as per IS 800/IS.

MS ANGLE
25X25X3
35X35X6
50X50X6

JB

CABLE / FLEXIBLE
CONDUIT

LIGHTING FIXTURE

**SUPPORTED FROM CHANNEL/
STRUCTURAL STEEL
TYPE-G**

1016185/2025/PS-PEM-EL	02	03	04	05	06	07	08
H	G	F	E	D	C	B	A
<div> <div> <p>Diagram of Type-G wall mounting. It shows a side view of a mounting assembly. A 'STEEL PLATFORM' is at the base. An 'MS. ANGLE' (25X25X3, 35X35X6, 50X50X6) is mounted to a wall. A 'JB' (Junction Box) is connected to the angle. A 'CABLE / FLEXIBLE CONDUIT' runs from the JB to a 'LIGHTING FIXTURE'. A 'WELD' is indicated at the base of the angle. Dimensions '500-600' and '100-150' are shown.</p> <p>TYPE-G</p> </div> <div> <p>Diagram of Type-H wall mounting. It shows a side view of a mounting assembly. A 'JB' (Junction Box) is connected to a 'CLAMP' on a 'CONDUIT'. The conduit runs to a 'LIGHTING FIXTURE'. The fixture is shown in a perspective view.</p> <p>WALL MOUNTING TYPE-H</p> </div> </div>							
<div> <div> <p>General Notes:</p> <ol style="list-style-type: none"> 1. Mounting arrangement can be changed/ modified on site as per site requirements. 2. In Lighting layout, Mounting arrangement also shown. If any Discrepancy found on both documents than Consult with Design incharge/Site Incharge. 3. Quantity and Material shown in drawings are indicative only and may be change or vary as per site requirement. 4. If any new type of mounting required at site than we can optimized or change the arrangement with prior inform to BHEL site incharge. 5. All structural steel parts/supporting parts shall be hot dip galvanized as per B06/IS. </div> <div> <p>49</p> </div> </div>							
<div> <div> <p>File No. PEM-PGOMM(34)/68/2025-PS-PEM-PGII-2 (Computer No. 165745)</p> <p>Generated from @Office by Shamik Gupta, ENGINEER(SG)-PG II-2-PS-PEM, ENGINEER BHARAT HEAVY ELECTRICAL on 04/04/2025 09:41 am</p> </div> <div> <p>SIZE-A4</p> </div> </div>							

H

G

F

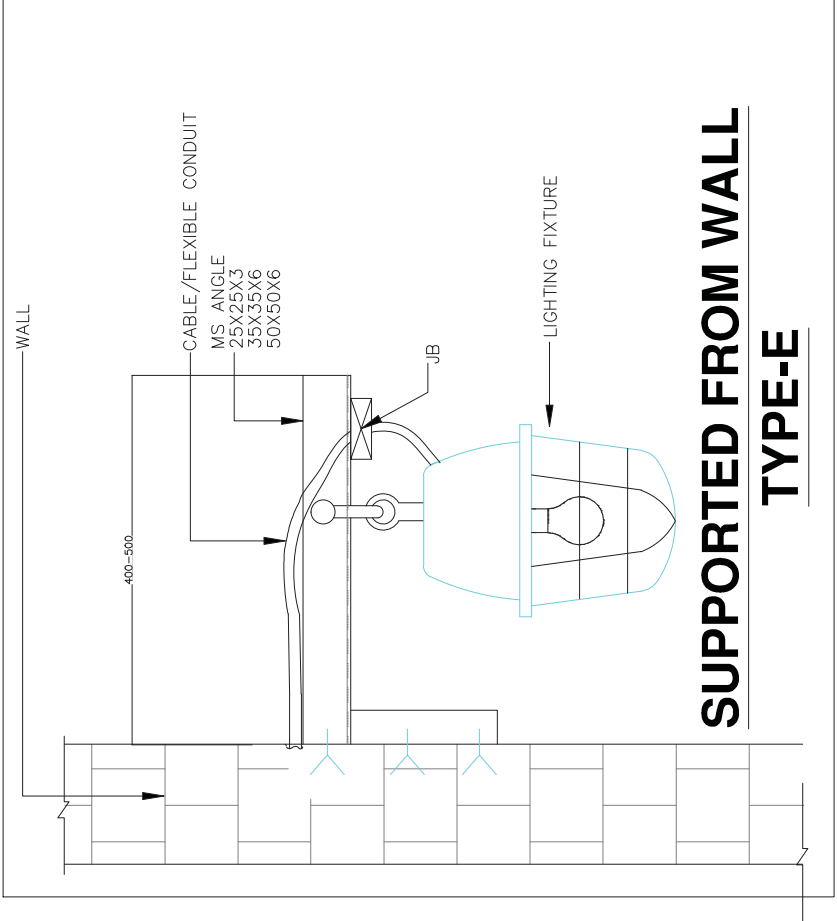
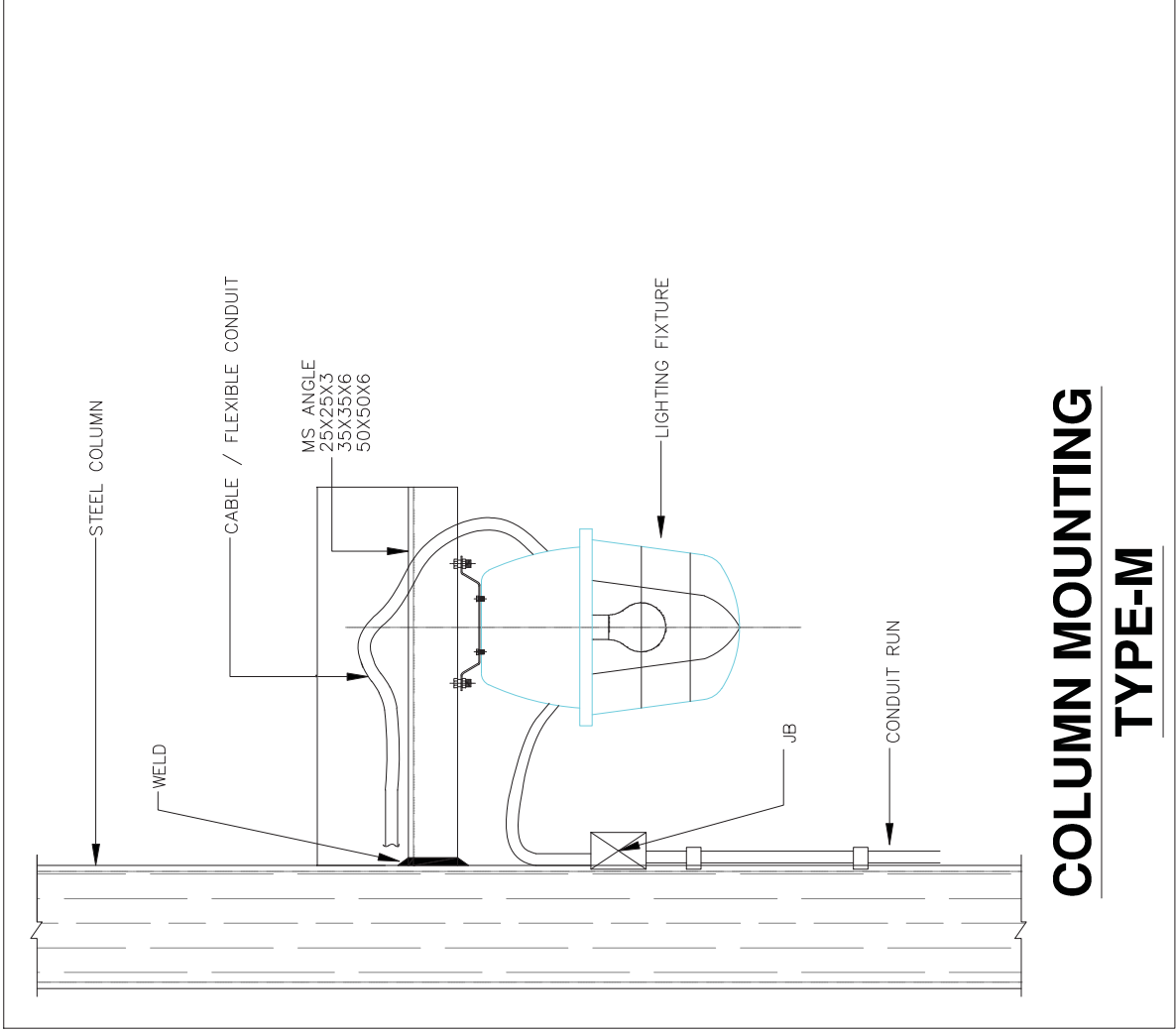
E

D

C

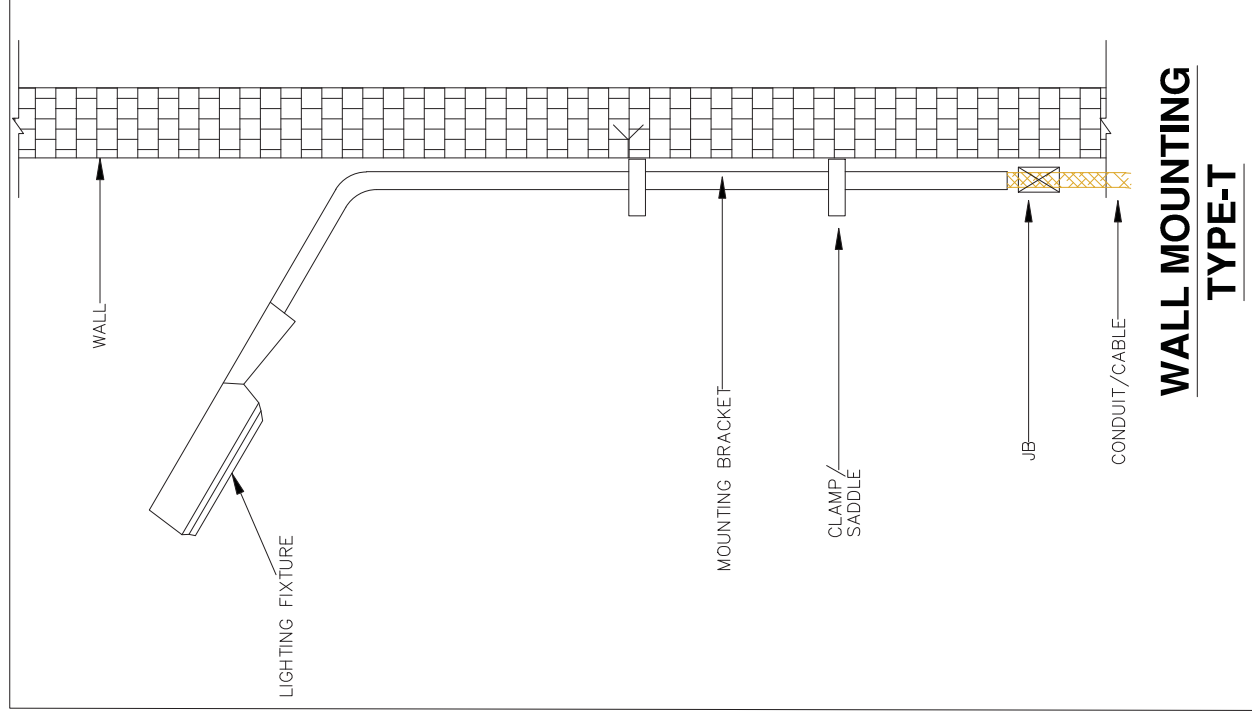
B

A



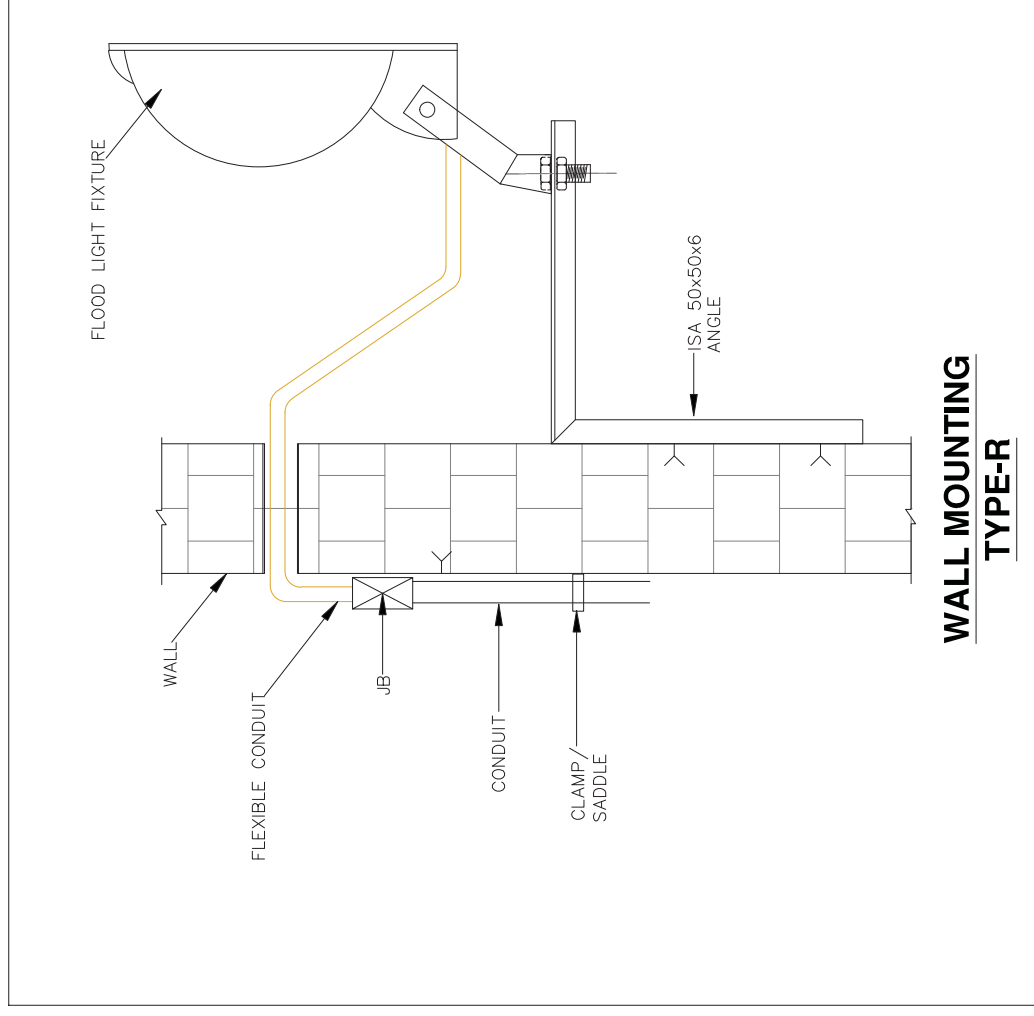
General Notes:

1. Mounting arrangement can be changed/ modified on site as per site requirements.
2. In Lighting layout, Mounting arrangement also shown, if any Discrepancy found on both documents than Consult with Design Incharge/Site Incharge.
3. Quantity and Material shown in drawings are indicative only and may be change or vary as per site requirement.
4. If any new type of mounting required at site than we can optimized or change the arrangement with prior inform to BHFL site incharge.
5. All structural steel parts/supporting parts shall be hot dip galvanized as per B00/JS.



General Notes:

1. Mounting arrangement can be changed/ modified on site as per site requirements.
2. In Lighting layout, Mounting arrangement also shown. If any Discrepancy found on both documents than Consult with Design incharge/Site Incharge.
3. Quantity and Material shown in drawings are indicative only and may be change or vary as per site requirement.
4. If any new type of mounting required at site than we can optimized or change the arrangement with prior inform to BHEL site incharge.
5. All structural steel parts/supporting parts shall be hot dip galvanized as per BQQ/IS.



General Notes:

1. Mounting arrangement can be changed/ modified on site as per site requirements.
2. In Lighting layout, Mounting arrangement also shown. If any Discrepancy found on both documents than Consult with Design incharge/Site Incharge.
3. Quantity and Material shown in drawings are indicative only and may be change or vary as per site requirement.
4. If any new type of mounting required at site than we can optimized or change the arrangement with prior inform to BHEL site incharge.
5. All structural steel parts/supporting parts shall be hot dip galvanized as per BQ/TS.

STANDARD QUALITY PLAN										Approved by QA			
ITEM : LED FIXTURE		SQP NO: ADANI/QA/SQP/E/039 REV. NO.:02 DATE: 01.03.2017 PAGE: 2 of 2											
SL No.	COMPONENT/ OPERATION	CHARACTERISTICS	CATEGORY OF CHECK	TYPE OF CHECK	QUANTUM OF CHECK		REFERENCE DOCUMENT	ACCEPTANCE NORMS	FORMAT OF RECORD	INSPECTION AGENCY			REMARKS
					M	C/A				M	C	A	
1	2	3	4	5	6	7	8	9	*D	**10	11		
3.2	Final Inspection of finished product	Luminous Flux	Critical	Test	01 No./ Type / Lot	IS 16103 Part-2 / Apprd Data Sheet	IS 16103 Part-2 / Apprd Data Sheet	IR	✓	P	H	H	- In Case The Type Test Is Specially Required As Per Technical Specification/PO same shall be witnessed.
		Luminaire Efficacy	Critical	Test					✓	P	H	H	
		CCT & CRI Measurement	Critical	Test					✓	P	H	H	
		Surge Test	Critical	Test					✓	P	H	H	
		Driver Efficiency	Critical	Test					✓	P	H	H	
3.3	Type Test	Burn Test on finished product (12 Hrs)	Critical	Reliability	45 Nos or 100 % which ever is less	IS 16103 Part-2	IS 16103 Part-2	Type Test Report	✓	P	V	V	All The Type Test Report mentioned In SQP shall be reviewed at The time of final inspection.
		LM-79 & 80 Lab Test Report	Critical	Test	45 Nos or 100 % which ever is less	As per applicable Standards: IS 10322 (Part5/Sec1):2012 & IEC 60598-2-1	As per applicable Standards: IS 10322 (Part5/Sec1):2012 & IEC 60598-2-1			P	V	V	
		EN62471 - Photo Biological Safety for Humans	Critical	Test						P	V	V	
		Thermal & Endurance Test	Critical	Test						P	V	V	
		Resistance to dust and moisture (IP) Test Report	Critical	Test						P	V	V	
		High Voltage Test (at 2U _n +1500V)	Critical	Test						P	V	V	
		Insulation Resistance	Critical	Test						P	V	V	
LEGEND:- D* Records identified with tick (✓) shall be essentially included by supplier & manufacturer in Quality Documentation package. ** M: Manufacturer / Sub-Supplier, C: Main Supplier, A: Adani or their authorized representative. Use the following term as appropriate in columns 10. P: Perform, V: verification and H: Customer Hold Point to be witnessed and work shall not proceeded till it is witnessed and cleared in writing. Format of Record: MTC: Manufacturer/Sub-supplier Test Certificate, ITR: Inprocess Test Report/Record, IR: Inspection Report GENERAL NOTE:- - Manufacturer should have all the in house testing facilities for LED Fixture. - Testing Instruments used during inspection must be calibrated from NABL accredited lab only. Instruments used during testing should be within valid calibration date. - Manufacturer to submit all the Type Test Report to Owner's Engineering Team for review and approval prior to submission of Inspection Call.													