

Bharat Heavy Electricals Limited

(High Pressure Boiler Plant)

Tiruchirapalli – 620014, TAMIL NADU, INDIA

MATERIALS MANAGEMENT / SSTP

INDIGENOUS OPEN TENDER ENQUIRY NOTICE INVITING TENDER (NIT)		Phone: +91 431 257 7368 Email : takilan@bhel.in , Web: www.bhel.com	
SINGLE PART BID Tender to be submitted in two Parts through online on EPS website https://eprocurebhel.co.in	Enquiry Number & date: 9632500014 dated 09.05.2025	Closing date of online offer submission: 14.05.2025 at 15:00 P.M	Online Technical Bid opening date: 14.05.2025 at 15:30 P.M
You are requested to quote the Enquiry number date and due date in all your correspondence. This is only a request for quotation and not an order. Please note that under any circumstances both delayed offer and late offers will not be considered. Hence vendors are requested to ensure that the offer is uploaded in the EPS Website i.e. https://eprocurebhel.co.in before the closing date mentioned in the online enquiry.			
Item	Description		Quantity
10	BURNER BLOCK MODEL-5514-6 (LL90) as per the technical specification & commercial conditions applicable (to be downloaded from web site https://eprocure.co.in) .		10 Nos.
Important points to be taken care during submission of offer <ol style="list-style-type: none"> 1. The bidder shall submit their response through bid submission to the tender on BHEL TRICHY - TENDER CELL OFFER: tender_cell@bhel.in; 2. Please visit BHEL WEB SITE (http://www.bhel.com) for downloading Specification & commercial terms and conditions and submit your offer. 3. Delivery terms shall be For Sr Engineer, Stores-85, SSTP, BHEL, Tiruchirappalli – 620014 4. Compliance Forms BHEL General T&C is to be filled and enclosed along with the offer failing which, the offer will not be considered for evaluation. 5. Delivery period required is 10 Days from the date of Purchase Order. 6. Procurement of the item through this NIT will be as per Public Procurement (Preference to Make in India), Order 2017 dated 19.07.2024 by DPIIT (DPIIT Order No. P-45021/2/2017-PP (BE-II) Part (4) Vol. II dated 19.07.2024), to encourage 'Make in India ' and promote manufacturing and production of goods and services in India. 7. Indigenous Supplier should submit the Self Certification regarding the Local Content in line with Government public procurement order Number P-45021/2/2017-PP (B.E-II) dated 04.06.2020 8. All updates, amendments, corrigenda, etc., (if any), for each tender will be posted only on the above websites from time to time, as and when required, until each tender is opened. There will be no publication of such updates, amendments, corrigenda, etc., through newspapers or any other media. <p>BHEL's General guidelines / instructions (refer BHEL General T&C), compliance form and technical specification etc. can be downloaded from BHEL web https://eprocurebhel.co.in under Enquiry reference "9632500014".</p>			
Tenders should be uploaded on EPS site on or before 14.05.2025, 15.00 PM.		Yours faithfully, For BHARAT HEAVY ELECTRICALS LIMITED <i>Akilan. T</i>	
Tenders will be opened online at 15.30 hours on the due date.			

ANNEXURE-I**PRE QUALIFICATION REQUIREMENT**

SL NO	PRE QUALIFICATION REQUIREMENT	VENDOR'S COMMENTS
1	This is single tender procurement . Hence offer from M/S. SHARADAA CERAMICS PRIVATE LIMITED is only acceptable .	
	Offers not meeting the above requirements shall be liable for rejection	

SL NO	DOCUMENT REQUIREMENTS	VENDOR'S COMMENTS
1	Filled in & signed copy of Annexure I - PQR details with organisation seal /stamp	
2	Filled in & signed copy of Annexure II - TDC details with organisation seal /stamp	
3	Filled in & signed copy of BHEL tender terms and conditions	

Raghu
veer R

Digitally signed
by Raghuveer R
Date:
2025.05.09
10:54:45 +05'30'

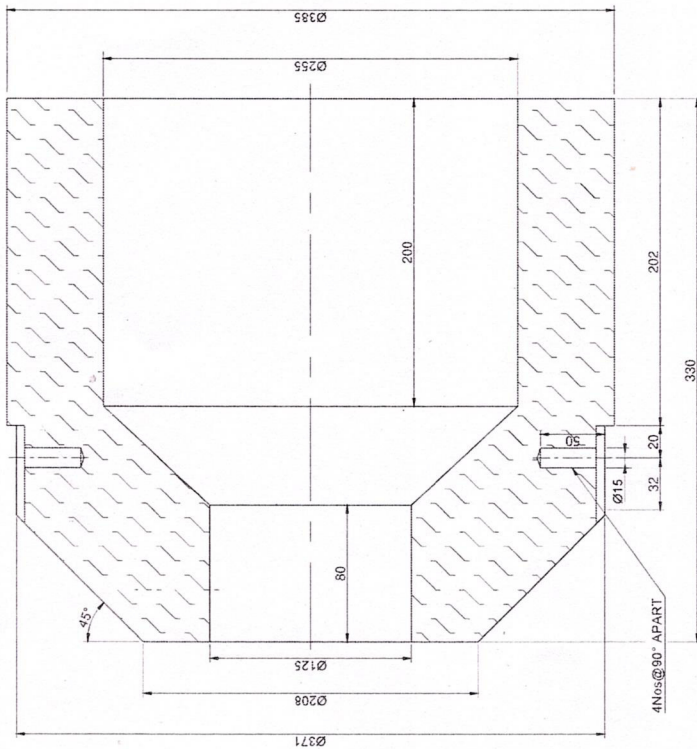
SPECIFICATION OF PCPF BURNER BLOCKS				
SN	PARTICULARS	UNIT	LIMIT	VALUE FOR
				LL 90 LC PCPF
1	Al ₂ O ₃	%	MIN	90
2	Fe ₂ O ₃	%	MAX	0.5
3	Bulk Density	gm/cc	MIN	2.85
4	Cold Crushing Strength	Kg/cm ²	MIN	700
5	Pyrometric Cone Equivalent	OC (° C)	MIN	38 (1835)
6	Permanent Linear Change after firing	%	MAX	+/- 0.2
	at 1450° C for 2 hours			
7	Size Tolerance	-	-	+/- 1.5% or +/- 2 mm whichever is more

The properties given above are applicable for standard blocks of size 230x115x75 made of same composition and prefired at 800 Deg C for 3 hours

R. Raghunee

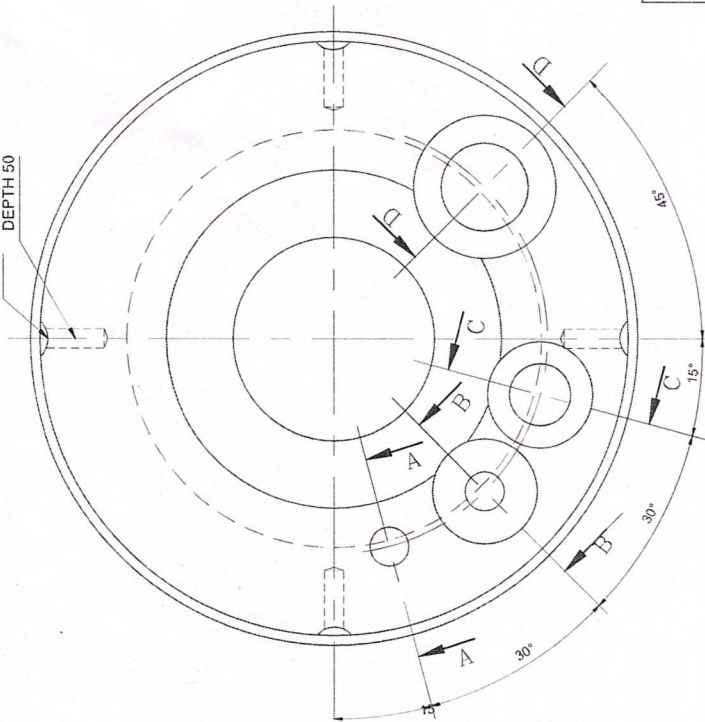
2-7-1101-01-01351

ALL DIMENSIONS ARE IN MILLIMETERS



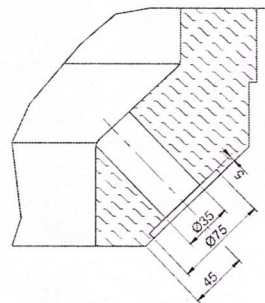
DEPTH 50

R7.5

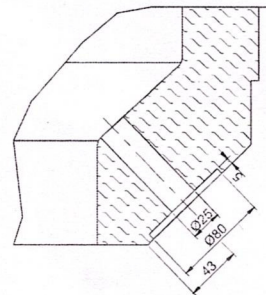


MATERIAL SPECIFICATION:

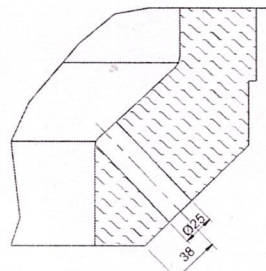
Al 203 % min : 58-60
 Fe 203 % max : 1.5
 CCS Kg/sq.cm. min : 250
 PCE SK min : 36
 RUL ta min : 1530-1570
 BD gm/cc min : 2.4
 AP % max : 24
 PLC % max : 24
 deg C FOR 2 Hrs : 1500
 deg C FOR 2 Hrs : 1500
 SIZE TOLERANCE : ± 0.2 @ 1450 deg. C FOR 2 Hrs OR ± 0.2 @ 1500
 : $\pm 1.5\%$ (OR) ± 2 MM WHICH EVER IS GREATER



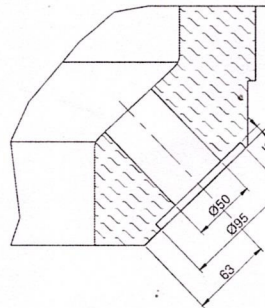
SECTION - CC



SECTION - BB



SECTION - AA



SECTION - DD

CAUTION: THE INFORMATION ON THIS DOCUMENT IS THE PROPERTY OF BHARAT HEAVY ELECTRICALS LIMITED. IT MUST NOT BE USED DIRECTLY OR INDIRECTLY IN ANY MANNER WITHOUT THE WRITTEN PERMISSION OF THE COMPANY.

ITEM NO.		DESCRIPTION	QTY	UNIT	REMARKS
1	1	ROTARY HEARTH FURNACE	1	NO	
2	2	ROTARY HEARTH FURNACE	1	NO	
3	3	ROTARY HEARTH FURNACE	1	NO	
4	4	ROTARY HEARTH FURNACE	1	NO	
5	5	ROTARY HEARTH FURNACE	1	NO	
6	6	ROTARY HEARTH FURNACE	1	NO	
7	7	ROTARY HEARTH FURNACE	1	NO	
8	8	ROTARY HEARTH FURNACE	1	NO	
9	9	ROTARY HEARTH FURNACE	1	NO	
10	10	ROTARY HEARTH FURNACE	1	NO	
11	11	ROTARY HEARTH FURNACE	1	NO	
12	12	ROTARY HEARTH FURNACE	1	NO	
13	13	ROTARY HEARTH FURNACE	1	NO	
14	14	ROTARY HEARTH FURNACE	1	NO	
15	15	ROTARY HEARTH FURNACE	1	NO	
16	16	ROTARY HEARTH FURNACE	1	NO	
17	17	ROTARY HEARTH FURNACE	1	NO	
18	18	ROTARY HEARTH FURNACE	1	NO	
19	19	ROTARY HEARTH FURNACE	1	NO	
20	20	ROTARY HEARTH FURNACE	1	NO	
21	21	ROTARY HEARTH FURNACE	1	NO	
22	22	ROTARY HEARTH FURNACE	1	NO	
23	23	ROTARY HEARTH FURNACE	1	NO	
24	24	ROTARY HEARTH FURNACE	1	NO	
25	25	ROTARY HEARTH FURNACE	1	NO	
26	26	ROTARY HEARTH FURNACE	1	NO	
27	27	ROTARY HEARTH FURNACE	1	NO	
28	28	ROTARY HEARTH FURNACE	1	NO	
29	29	ROTARY HEARTH FURNACE	1	NO	
30	30	ROTARY HEARTH FURNACE	1	NO	
31	31	ROTARY HEARTH FURNACE	1	NO	
32	32	ROTARY HEARTH FURNACE	1	NO	
33	33	ROTARY HEARTH FURNACE	1	NO	
34	34	ROTARY HEARTH FURNACE	1	NO	
35	35	ROTARY HEARTH FURNACE	1	NO	
36	36	ROTARY HEARTH FURNACE	1	NO	
37	37	ROTARY HEARTH FURNACE	1	NO	
38	38	ROTARY HEARTH FURNACE	1	NO	
39	39	ROTARY HEARTH FURNACE	1	NO	
40	40	ROTARY HEARTH FURNACE	1	NO	
41	41	ROTARY HEARTH FURNACE	1	NO	
42	42	ROTARY HEARTH FURNACE	1	NO	
43	43	ROTARY HEARTH FURNACE	1	NO	
44	44	ROTARY HEARTH FURNACE	1	NO	
45	45	ROTARY HEARTH FURNACE	1	NO	
46	46	ROTARY HEARTH FURNACE	1	NO	
47	47	ROTARY HEARTH FURNACE	1	NO	
48	48	ROTARY HEARTH FURNACE	1	NO	
49	49	ROTARY HEARTH FURNACE	1	NO	
50	50	ROTARY HEARTH FURNACE	1	NO	
51	51	ROTARY HEARTH FURNACE	1	NO	
52	52	ROTARY HEARTH FURNACE	1	NO	
53	53	ROTARY HEARTH FURNACE	1	NO	
54	54	ROTARY HEARTH FURNACE	1	NO	
55	55	ROTARY HEARTH FURNACE	1	NO	
56	56	ROTARY HEARTH FURNACE	1	NO	
57	57	ROTARY HEARTH FURNACE	1	NO	
58	58	ROTARY HEARTH FURNACE	1	NO	
59	59	ROTARY HEARTH FURNACE	1	NO	
60	60	ROTARY HEARTH FURNACE	1	NO	
61	61	ROTARY HEARTH FURNACE	1	NO	
62	62	ROTARY HEARTH FURNACE	1	NO	
63	63	ROTARY HEARTH FURNACE	1	NO	
64	64	ROTARY HEARTH FURNACE	1	NO	
65	65	ROTARY HEARTH FURNACE	1	NO	
66	66	ROTARY HEARTH FURNACE	1	NO	
67	67	ROTARY HEARTH FURNACE	1	NO	
68	68	ROTARY HEARTH FURNACE	1	NO	
69	69	ROTARY HEARTH FURNACE	1	NO	
70	70	ROTARY HEARTH FURNACE	1	NO	
71	71	ROTARY HEARTH FURNACE	1	NO	
72	72	ROTARY HEARTH FURNACE	1	NO	
73	73	ROTARY HEARTH FURNACE	1	NO	
74	74	ROTARY HEARTH FURNACE	1	NO	
75	75	ROTARY HEARTH FURNACE	1	NO	
76	76	ROTARY HEARTH FURNACE	1	NO	
77	77	ROTARY HEARTH FURNACE	1	NO	
78	78	ROTARY HEARTH FURNACE	1	NO	
79	79	ROTARY HEARTH FURNACE	1	NO	
80	80	ROTARY HEARTH FURNACE	1	NO	
81	81	ROTARY HEARTH FURNACE	1	NO	
82	82	ROTARY HEARTH FURNACE	1	NO	
83	83	ROTARY HEARTH FURNACE	1	NO	
84	84	ROTARY HEARTH FURNACE	1	NO	
85	85	ROTARY HEARTH FURNACE	1	NO	
86	86	ROTARY HEARTH FURNACE	1	NO	
87	87	ROTARY HEARTH FURNACE	1	NO	
88	88	ROTARY HEARTH FURNACE	1	NO	
89	89	ROTARY HEARTH FURNACE	1	NO	
90	90	ROTARY HEARTH FURNACE	1	NO	
91	91	ROTARY HEARTH FURNACE	1	NO	
92	92	ROTARY HEARTH FURNACE	1	NO	
93	93	ROTARY HEARTH FURNACE	1	NO	
94	94	ROTARY HEARTH FURNACE	1	NO	
95	95	ROTARY HEARTH FURNACE	1	NO	
96	96	ROTARY HEARTH FURNACE	1	NO	
97	97	ROTARY HEARTH FURNACE	1	NO	
98	98	ROTARY HEARTH FURNACE	1	NO	
99	99	ROTARY HEARTH FURNACE	1	NO	
100	100	ROTARY HEARTH FURNACE	1	NO	

RHF - BURNER BLOCK (INNER WALL)
 BURNER MODEL : 5514 - 6

2-7-1101-01-01351

A2-SIZE