



Form No. 2038

उत्पाद मानक
परिणामित्र
शाप/अभि. निर्देश

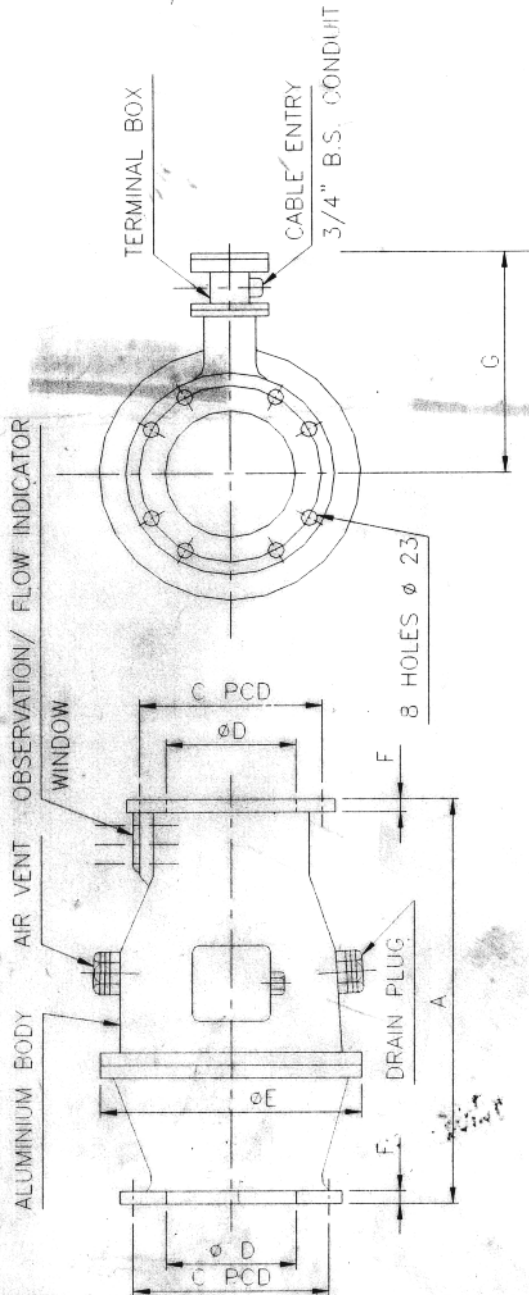
PRODUCT STANDARD
TRANSFORMER
SHOP/ENGG INSTRUCITONS

TR 20011P

1 पृष्ठों में

PAGE 1 OF 1

TITLE: **TRANSFORMER OIL PUMPS AXIAL FLOW (INLINE TYPE)**



| IT NO. | SIZE SUCION DELIVER Y | STYLE | MAX POWER INPUT (KW) | VOLTAGE | FL CURRENT | LPM NOMINAL | HEAD METRE S | DIMENSIONS | | | | | | WT. KG |
|--------|-----------------------|------------------|----------------------|----------------|------------|-------------|--------------|------------|-------|-------|-------|----------|-------|--------|
| | | | | | | | | A | C PCD | D NOM | E Max | F | G Max | |
| 001 | 200x200 | BP9046 045447 | 2.4 | 41.5 \pm 10% | 5.2A | 2700 | 2.5 | 500 | 295 | 200 | 385 | 20 to 25 | 270 | 65 |
| 002 | 150 x 150 | BP9046 045307 | 1.3 | 41.5 \pm 10% | 3.5 A | 1800 | 2.5 | 425 | 240 | 150 | 340 | 20 to 23 | 240 | 45 |
| 003 | 200 x 200 | BP9046 048357 | 3.8 | 41.5 \pm 10% | 8.0 A | 4500 | 3.0 | 500 | 295 | 200 | 360 | 20 to 25 | 270 | 65 |

NOTES: (1) FOR GENERAL SPECIFICATION OF PUMP MOTOR REFER DRG. TR 10023P SHEETS 1 TO 8.

(2) TOLERANCE ON NOMINAL FLOW SHALL BE MINUS 5% & PLUS 10%.

RFP
COMP. drg

COPYRIGHT AND CONFIDENTIAL
The information on this document is the property of BHARAT HEAVY ELECTRICALS LIMITED. It must not be used directly or indirectly in any way detrimental to the interest of the Company.

PAGE 1 OF 1

REV
11
4/12/15

SHEET REAFFIRMED.

[Signature]

सं. Rev. TO DATE 13.3.08

TABLE OF MAX. POWER INPUT AND FL CURRENT UPDATED.

[Signature] S.D. MISHRA
[Signature] AMULYA DEOTA

वितरण
DISTRIBUTION.
TRE/TRM/FTM
TRX/TTG/
QC-TCB/QA-TCB/
JHANSI

सं.

स्वीकृत किया :
APPROVED : sd /-MCJ, SNA

तैयार किया PREPD.
sd /-SRR

जारी किया ISSUED
टीआरई//मानक TRE/STD.

दिनांक
DATE
07-09-82