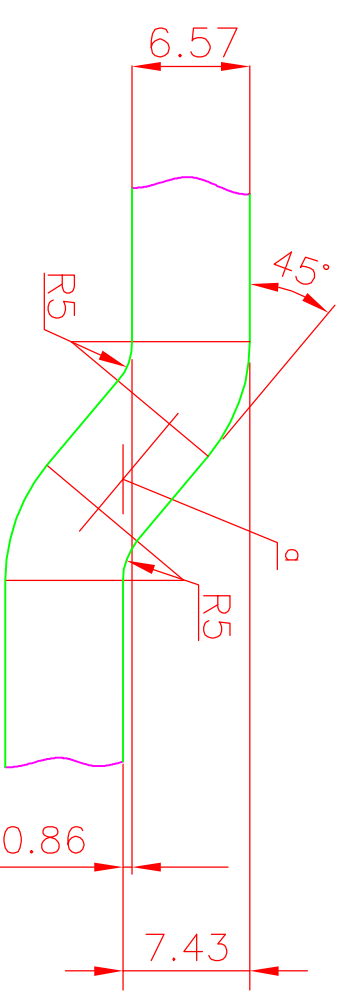
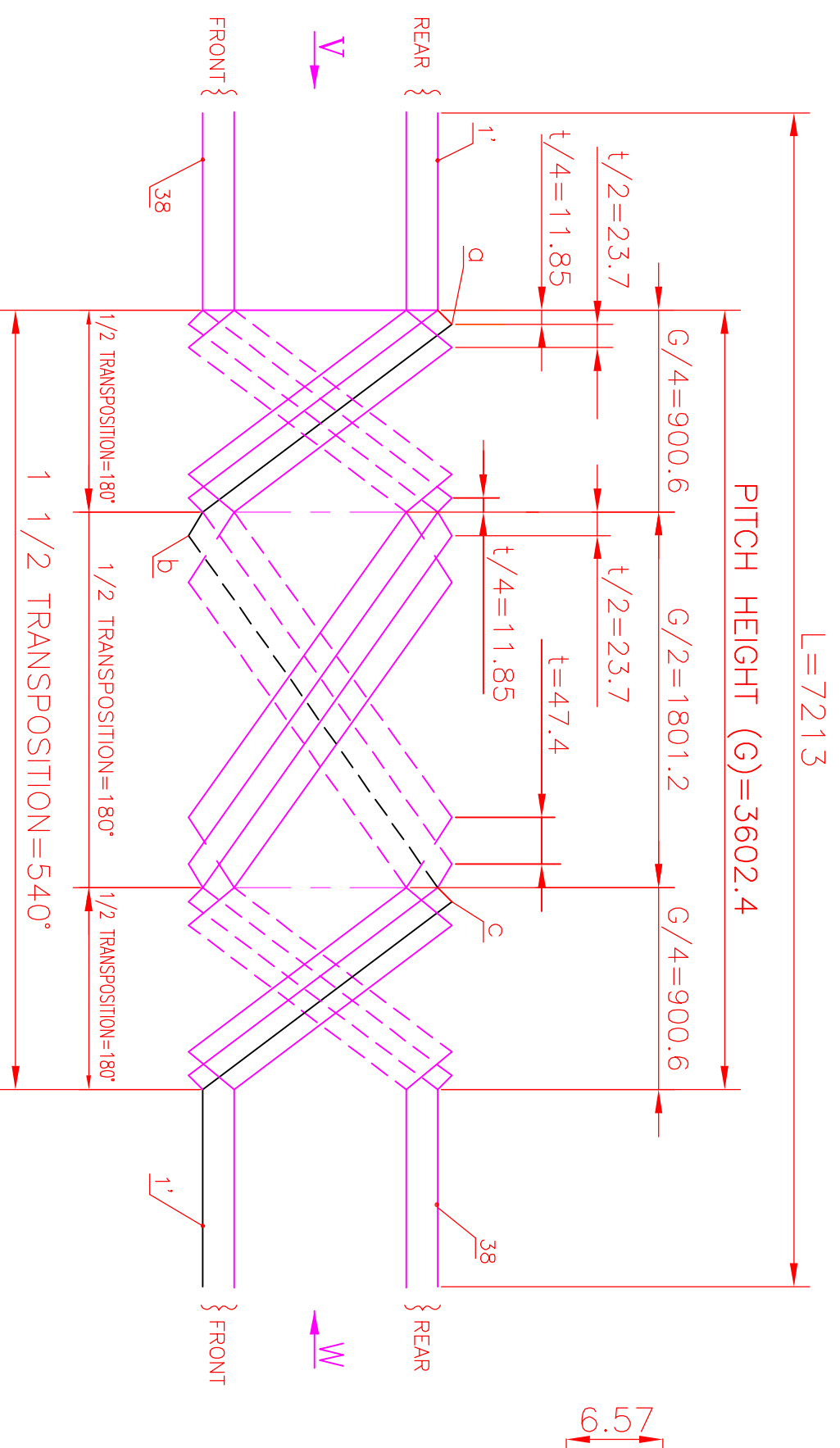
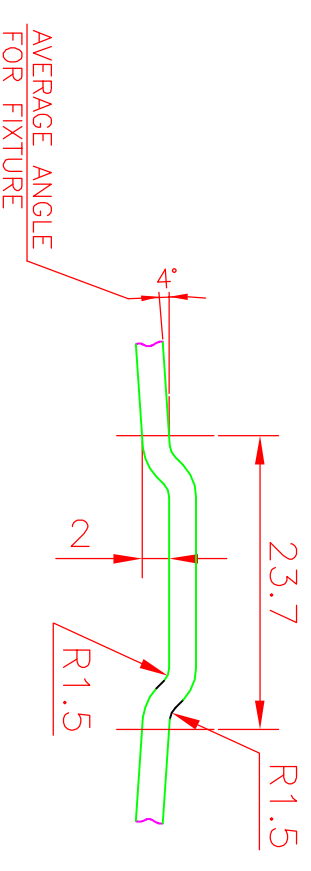


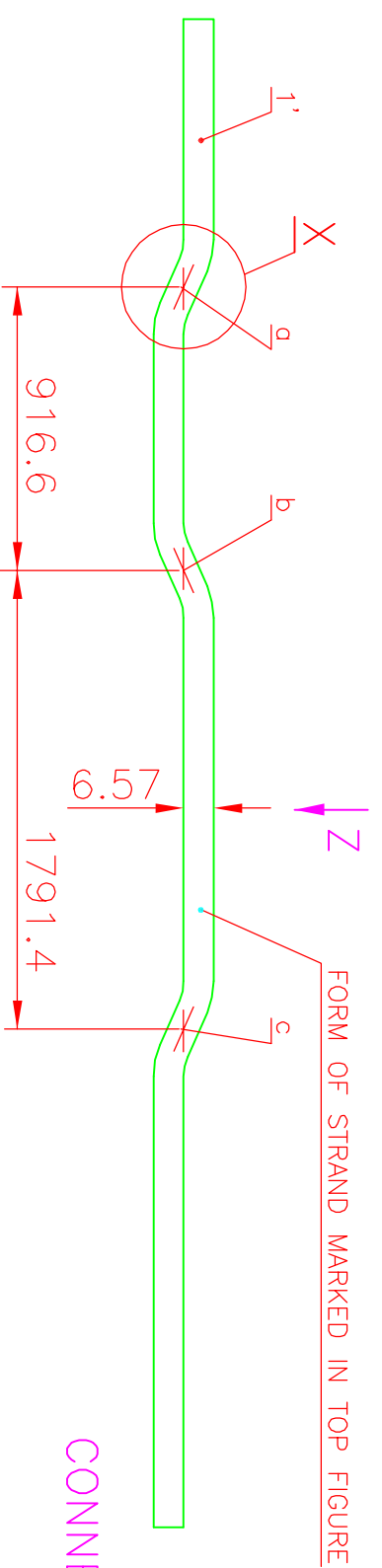
ANNEXURE-II



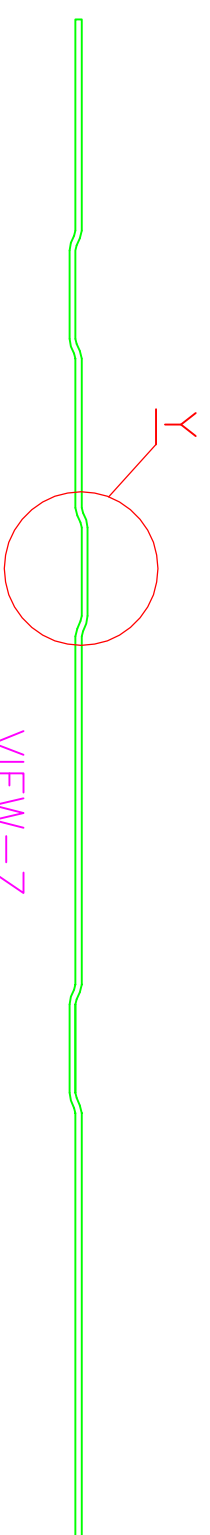
DETAIL-X



DETAIL-Y



EE CONNECTION END



VIEW-Z

CONDUCTOR SIZE: 1.9x6.3 (BARE) / 2.17x6.57 (INSL)

540° TRANSDUCTION DETAILS FOR 150 mw. (DOUBLE PLANE BENDING)

4-EMT-1762

25-08-2010