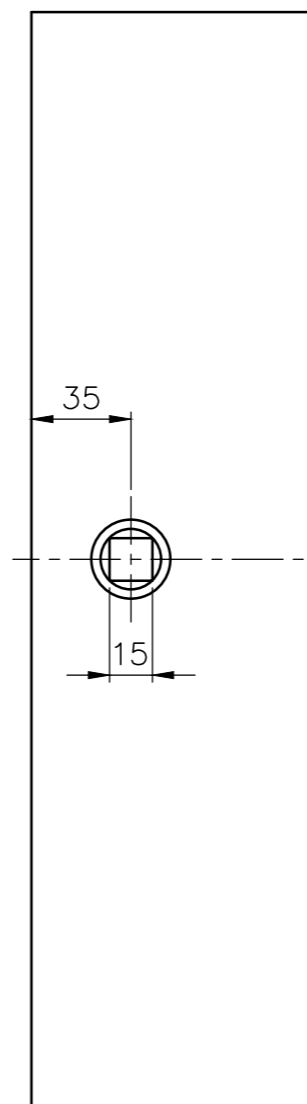
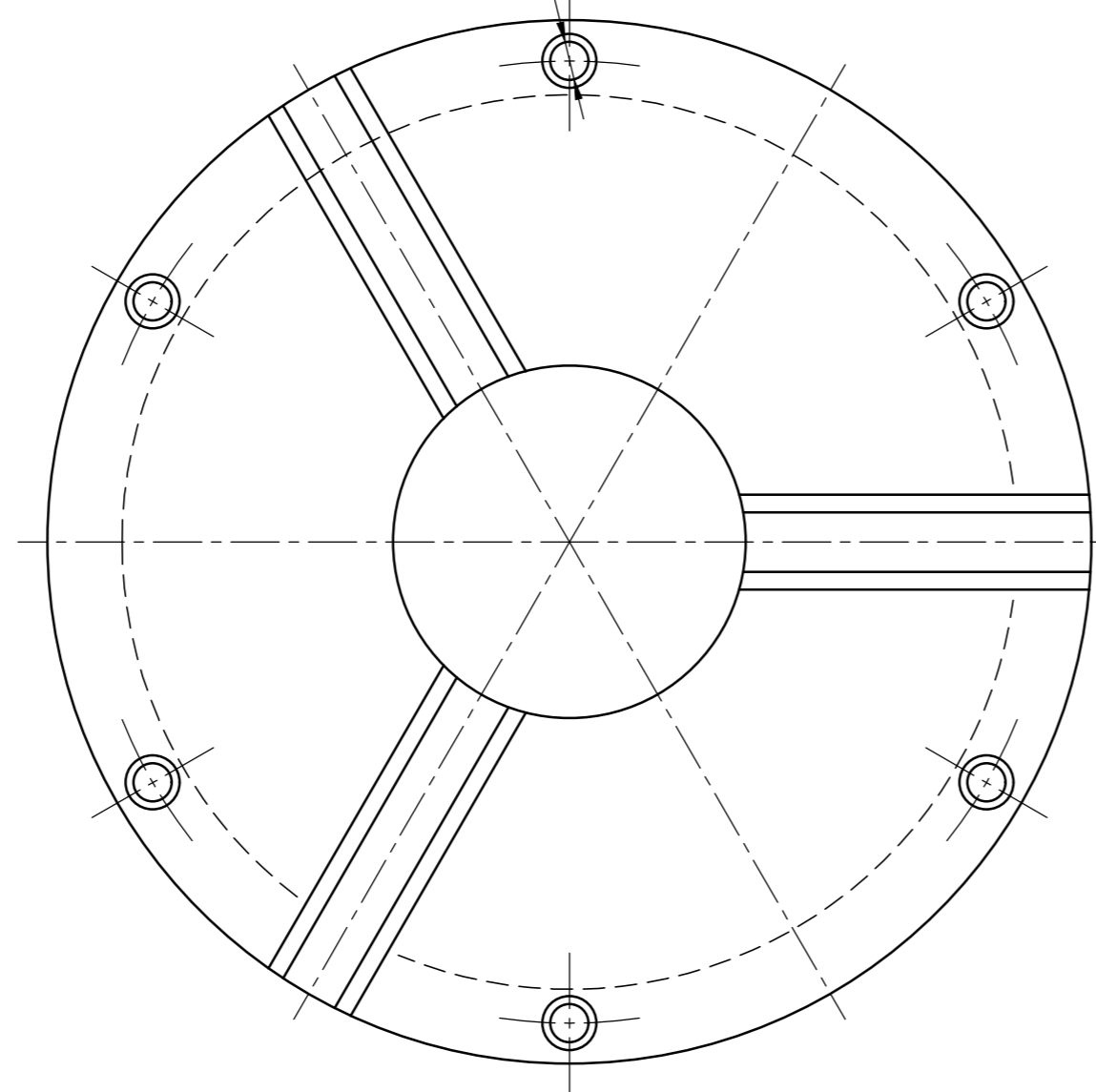
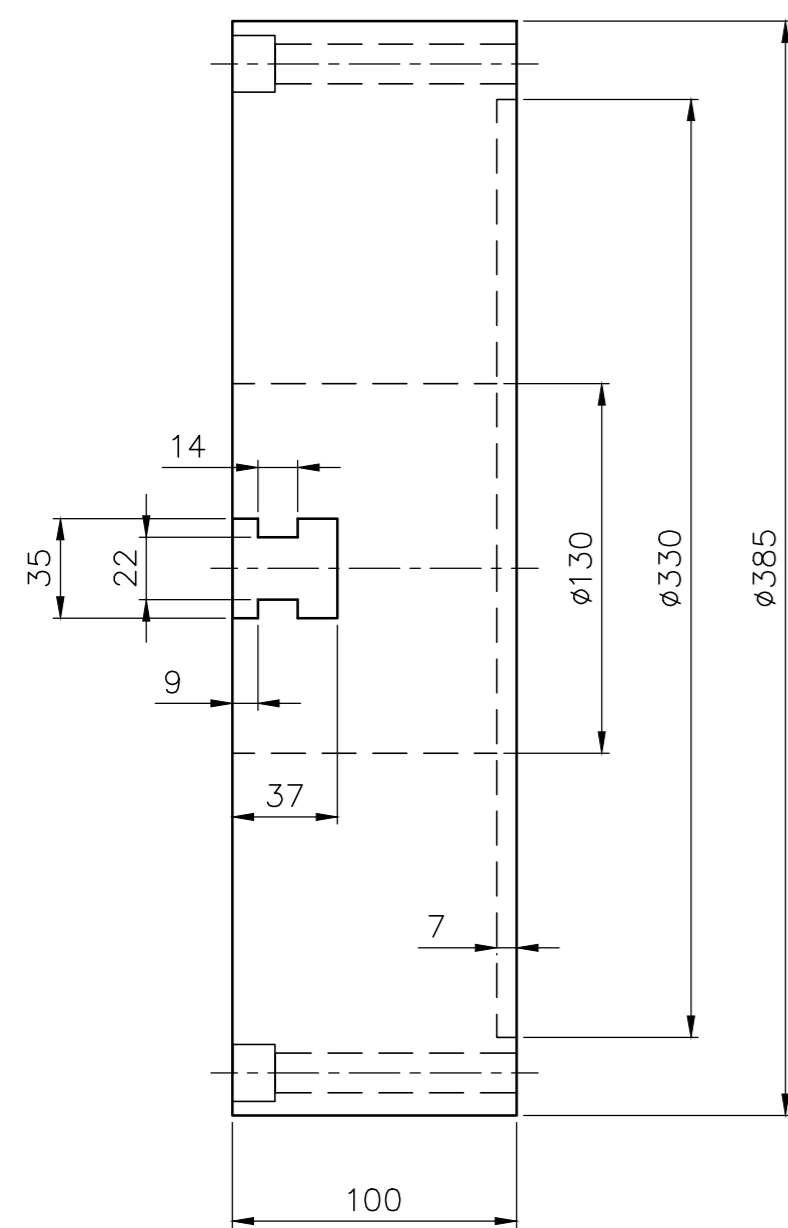


Technical Specifications

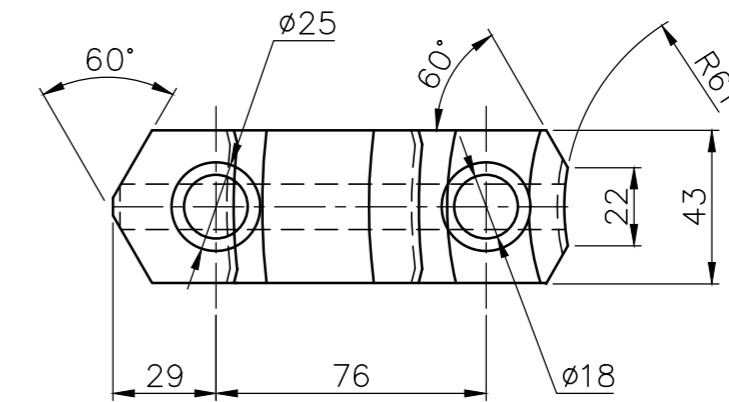
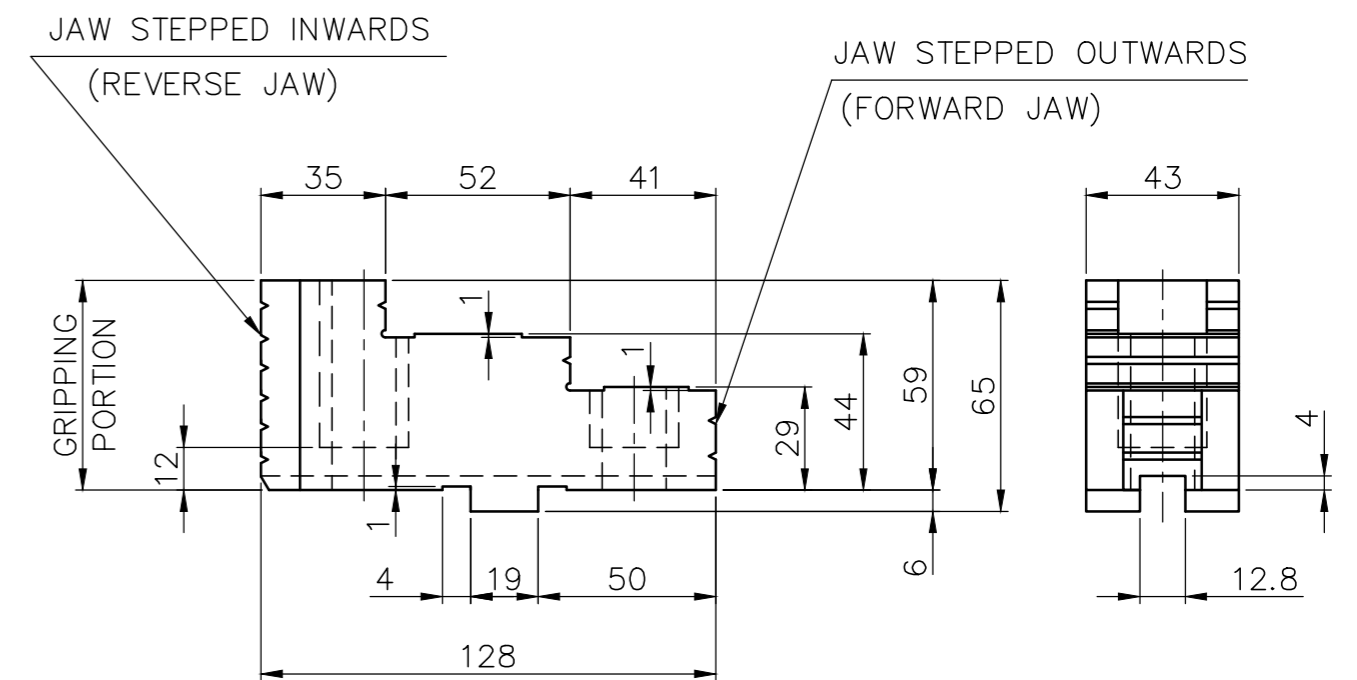
Sl.No	Item Description and Technical Specifications	Qty (Nos.)	Vendor's Confirmation /Acceptance
1	<p>3 Jaw Scroll Chuck Assembly</p> <p>SPECIFICATION: 3 JAW SCROLL CHUCK COMPLETE ASSEMBLY, AS PER DRAWING 2M12B4306499</p>	4	
<p>Note:</p> <p>(1) THE OFFERER SHALL SUBMIT TECHNICAL DATA SHEET/PRODUCT CATALOGUE ALONG WITH OFFER FOR READY REFERENCE ITEMWISE AS PER ENQUIRY NUMBER.</p> <p>(2) SUPPLIER MAY VISIT THE AREA BEFORE QUOTING FOR GETTING ACQUAINTANCE ABOUT THEIR APPLICATION.</p> <p>(3) DELIVERY SHOULD BE WITHIN 12 - 14 WEEKS FROM THE DATE OF RELEASING THE PO/LOI.BIDDER TO CONFIRM.</p> <p>(4) MANUFACTURING DRAWING TO BE SUBMITTED WITHIN 4 WEEKS FROM THE DATE OF RELEASING THE PO/LOI FOR BHEL APPROVAL.BHEL WILL APPROVE THE SAME WITHIN 1 WEEK AFTER ALL THE CLARIFICATIONS SOUGHT HAVE BEEN SUBMITTED BY SUPPLIER.THIS HAS TO BE CONSIDERED WHILE QUOTING DELIVERY TIME.</p> <p>(5) MATERIAL TEST CERTIFICATE SHALL BE SUBMITTED ALONG WITH SUPPLY FOR ENQUIRED CHUCK FROM RECOGNISED LAB.</p> <p>(6) ANY ALTERATIONS IN MANUFACTURING OF CHUCK ASSEMBLY MAY BE ACCEPTED AFTER DISCUSSION WITH BHEL TO SUIT OUR APPLICATION.</p> <p>(7) AFTER PLACEMENT OF PURCHASE ORDER 1 NUMBER OF SAMPLE SHOULD BE SUPPLIED FOR BHEL ACCEPTANCE. AFTER GETTING SAMPLE ACCEPTANCE FROM BHEL, BALANCE PO QUANTITY SHALL BE SUPPLIED.</p> <p>VENDOR TO CONFIRM THIS IN THE TECHNICAL OFFER</p>			

Supplier's Signature & Seal

6HOLES $\phi 14$ CBR $\phi 20 \times 15$ DEEP
ON PCD 355



CHUCK



JAW

NOTE:-

01. THIS DRAWING IS ONLY FOR OUTER BODY. VENDOR HAS TO DESIGN SCROLL PLATE, BACK COVER, DRIVE PINION, HARD JAWS, SOFT JAWS ARE TO BE DESIGNED AS PER DRAWING.
02. CHUCK TO HOLD MINIMUM $\phi 30$ MM TO MAXIMUM $\phi 90$ MM TUBES.

AS PER IS 2876 : 1999 THE MATERIALS ARE TO BE:

CHUCK ; CAST FROM A SUITABLE GRADE OF HEAVY DUTY CAST IRON HAVING A HARDNESS OF 170 HB MIN OR FORGED OR TURNED FROM A SUITABLE MEDIUM CARBON STEEL HAVING A MINIMUM TENSILE STRENGTH OF 600MPa.

JAWS : SUITABLE STEEL OF TENSILE STRENGTH NOT LESS THAN 400MPa WITH GRIPPING PORTION HARDENED AND TEMPERED TO A HARDNESS BETWEEN 54 TO 62 HRC AND THE REMAINING PORTION TO A HARDNESS OF 28 HRC MIN.

REV	DATE	ALTERED
		CHECKED
		APPROVED
ZONE		

CAUTION: THE INFORMATION ON THIS DOCUMENT IS THE PROPERTY OF BHARAT HEAVY ELECTRICALS LIMITED. IT MUST NOT BE USED DIRECTLY OR INDIRECTLY IN ANY WAY DETRIMENTAL TO THE INTEREST OF THE COMPANY.	ITEM NO	DESCRIPTION	DRAWING NO	MATL CODE	UNIT WT
				MATL SPEC	QTY
	EQPT: ATCEP / KKK				
	DEPT M&S		GRADE OF UNTOL. DIM	SCALE	WEIGHT (Kg)
CODE 2597		$\phi / M / \#$ IS: 2102	1:10	-	00
TITLE			DRAWING NO :		REV
CHUCK AND JAW (ATCEP / KKK)			2-M-12B43-06499		00
			CARD CODE U 01		