

CORRIGENDUM-1 TO TENDER SPECIFICATION BHEL: PSSR: SCT: 1976

Sub: Application of Borosilicate Lining on the existing flue-can and Duct upto Flange near Chimney Shell, including all minor Civil, Electrical works, Supply of all materials, labour, tools and plants in existing single steel flue Concrete Chimney of 275 metre height at 1 x 800 MW North Chennai Stage III, Ponneri Taluk, Thiruvallur District, Tamil Nadu.

A. The following clauses in tender are modified as below:

S No	Reference Clause No.	Existing clause	Modified As
1.	Clause 9 IV vii) of NIT	vii). Performance Evaluation for Activity Month shall be completed in Evaluation Month (i.e. month next to Activity Month) or in rare cases in Post Evaluation Month (i.e. month next to Evaluation Month) after approval from Competent Authority. In case scores are not acceptable, Contractor can submit Review Request to GM Site/ GM Project latest by 25th of Evaluation Month or 3 days after approval of score, whichever is later. However, acceptance/rejection of 'Review Request' solely depends on the discretion of GM Site/GM Project. After acceptance of Review Request, evaluation score shall be reviewed at site and the score after completion of review process shall be acceptable and binding on the contractor.	vii). Performance Evaluation for Activity Month shall be completed in Evaluation Month (i.e. month next to Activity Month) or in rare cases in Post Evaluation Month (i.e. month next to Evaluation Month) after approval from Competent Authority. In case scores are not acceptable, Contractor can submit Review Request to GM Site/ GM Project latest by 27th of Evaluation Month or 5 days after approval of score, whichever is later. However, acceptance/rejection of 'Review Request' solely depends on the discretion of GM Site/GM Project. After acceptance of Review Request, evaluation score shall be reviewed at site and the score after completion of review process shall be acceptable and binding on the contractor.
2.	Sl. No. 10 of VOLUME-IA PART – II CHAPTER 1 of TCC	Existing format on Monthly Performance Evaluation of Contractor, as available in Form No F-15 of Volume ID Forms and procedure stands Deleted. Form No.- F-15 (Rev 02) is enclosed.	Existing format on Monthly Performance Evaluation of Contractor, as available in Form No F-15 of Volume ID Forms and procedure stands Deleted. Form No.- F-15 (Rev 03) is enclosed (Encl: 2 – 8 pages).

B. The following clarifications have been sought in regard to subject tender and BHEL's reply is furnished below for information.

Sl. No.	Clause ref. in Tender Document	Existing provision	Bidder's query	BHEL's Clarification
1.	Clause No. vii NOTICE INVITING TENDER	EMD Amount; Rs.7,30,000/- (Rupees Seven Lakhs Thirty Thousand only)	Several Govt. Organization/BHEL have waved off EMD due to as per announcement of finance minister on 12/11/2020 & pandemic. The EMD is not required.	Bidder to refer sl. No. vii) under clause no. 1 of NIT. Exemption of EMD for MSEs

CORRIGENDUM-1 TO TENDER SPECIFICATION BHEL: PSSR: SCT: 1976

Sl. No.	Clause ref. in Tender Document	Existing provision	Bidder's query	BHEL's Clarification
			Please note that we are covered under MSME.  We get exemption from submission of EMD	is not applicable for this tender.  Tender condition prevails.
2.	Clause No. 19 NOTICE INVITING TENDER	BHEL shall be resorting to Reverse Auction (RA) (Guidelines as available on www.bhel.com on "supplier registration page".) for this tender. RA shall be conducted among all the techno-commercially qualified bidders. ....	Reverse Auction (RA) should not be applicable	Tender condition prevails.
3.	Clause No. 1.3.3.2 TCC	Contractor has to make his own arrangements for labour colony. ....	We request BHEL to provide Land for labour colony inside the plant on free of cost basis	Labour Colony inside plant premises cannot be provided. Tender conditions Prevails.
4.	Clause No. 1.3.4.1 TCC	Water (Raw water) required for construction purposes will be provided at one single point within the plant area on chargeable basis from the nearest storage tank located inside the plant area at the prevailing rates of TANGEDCO / Metro water -----	Uninterrupted supply of water for construction at two point to be provided within 50m of Chimney Site, 50m of fabrication yard & Labour Colony (Free of cost). Connections should be provided with handing over of work front to us.	Tender conditions Prevails
5.	Clause No. 1.3.5.1 TCC	Construction power will be provided to the contractor at one point within plant area by BHEL on chargeable basis at the applicable rate of TANGEDCO under LT tariff VI at the nearest substation	Uninterrupted supply of Electricity (Free of cost) at three point to be provided within 50 m of Chimney Site, 50m of fabrication yard & Labour Colony. Connections should be provided with handing over of work front to us.  Please remove Batching Plant; as its not required as per scope	Tender conditions Prevails  Batching plant is not applicable as per scope.

CORRIGENDUM-1 TO TENDER SPECIFICATION BHEL: PSSR: SCT: 1976

Sl. No.	Clause ref. in Tender Document	Existing provision	Bidder's query	BHEL's Clarification
6.	VOLUME-IA PART-I CHAPTER – IV	Mixing Machine for mixing of adhesives	Mixing Machine should be provided by BHEL free of cost	Mixing Machine to be mobilised by the Bidder within the quoted rates
7.	Clause No. 1.6.1.1 TCC	Completion time– 04 Months	We request you to revise completion time to 08 Months	Tender conditions Prevails. Bidder to quote accordingly.
8.	Clause No. 1.6.5 TCC	Guarantee period of 12 months shall commence from the date of completion of the whole of the work, as certified by the Engineer	Please change Guarantee to Warranty. Only Warranty is applicable for Chimney work.	Tender conditions Prevails
9.	Clause No. 1.7.1 TCC	MOBILIZATION ADVANCE:  Not applicable	To avoid the negative cash flow, please provide Interest Free Advance as follows: -  1. 5% advance (Interest Free) excluding GST with LOI/LOA & against submission of Advance Bank Guarantee for equivalent amount 2. 5% advance (Interest Free) excluding GST against mobilisation of following: 2.1.Setting of site office, store. 2.2.Labour camp for initial work. 2.3.Electrical installations and water pipeline & water storage. 2.4.Mobilisation of workers and staff for initial work.  Completion of formalities for Labour License.	Tender conditions Prevails
10.	VOLUME-IA PART-I CHAPTER – VII	95% item rate shall be released after completion of works and certification by Engineer in charge.	You are kindly requested to consider 10% against mobilisation advance against bank guarantee	Tender conditions prevails

CORRIGENDUM-1 TO TENDER SPECIFICATION BHEL: PSSR: SCT: 1976

Sl. No.	Clause ref. in Tender Document	Existing provision	Bidder's query	BHEL's Clarification
11.	VOLUME-IA PART-I CHAPTER – IX	The Price bid contains the consolidated list of BOQ with brief description of items. The quantity indicated in the BOQ / Price bid is approximate only and is liable for variation.	Variation in quantity shall be +/- 10%	Quantity Variation shall be as per GCC 2.14.1. Tender condition prevails.
12.	VOLUME-IA PART-II CHAPTER 1 Clause No. Sl No: 5 TCC	OVER RUN CHARGES(ORC):  Not applicable for this tender.	Should be applicable	ORC is not applicable for this tender. Tender condition prevails.
13.	VOLUME-IA PART-II CHAPTER 1 Clause No. Sl No: 6 TCC	PRICE VARIATION CLAUSE(PVC):  Not applicable for this tender.	Should be applicable as per standard norms	PVC is not applicable for this tender. Tender condition prevails.
14.	Clause No. 10.4 SCC	Retention Amount shall be 5% of executed contract value and shall be recovered at the rate of 5% from each Running Bill	As per announcement of finance minister on 12/11/2020. The maximum amount of performance security should be 3% including retention & As such no retention should be deducted for performance of contract	Tender conditions Prevails
15.	Clause No. 1.10 GCC	Security Deposit; 5 % of the contract Value. EMD of the successful tenderer shall be converted and adjusted towards the required amount of security deposit----- -----	It should be Maximum 3% as per announcement of finance minister on 12/11/2020  Security BG will have initial validity of 1 year and same will be extended before expiry	Tender condition prevails.
16.	Clause No. 2.8.3 GCC	The contractor shall comply with all applicable State and Central Laws, Statutory Rules, Regulations, Notifications, etc. such as Payment of Wages Act, Minimum Wages Act, Workmen Compensation Act, Employer's Liability Act, Industrial Disputes Act, Employers Provident	Rates quoted in the tender are on the basis of State Minimum wages where the work is being executed.	Tender Conditions Prevail

CORRIGENDUM-1 TO TENDER SPECIFICATION BHEL: PSSR: SCT: 1976

Sl. No.	Clause ref. in Tender Document	Existing provision	Bidder's query	BHEL's Clarification
		Act, Employees State Insurance Scheme, Contract Labour (Regulation and Abolition) Act, 1970-----		
17.	Clause No. 2.7.9 GCC	If the contractor fails to maintain the required progress of work which results in delay in the completion of the work as per the contractual completion period, BHEL shall have the right to impose Liquidated Damage/Penalty at the rate of 0.5% of the contract value, per week of delay or part thereof subject to a maximum of 10% of the contract value.	<p><b>Liquidated Damages:</b></p> <ol style="list-style-type: none"> <li>1. An amount equal to 0.5% of contract value per week with maximum limit of 5% of contract value will be imposed as liquidated damages if delay is attributable to us.</li> <li>2 The maximum amount of liability of us for LD &amp; other penalties will be maximum of 5% of contract value.</li> <li>3 Grace Period of 2 months will be allowed for imposition of LD.</li> <li>4 In this clause there is no provision of FLOAT available to the contractor and on the contrary even if the contractor finishes the activities in time but because of the condition of finishing to be achieved before the agreed schedule will attract compensation of delay clause.</li> </ol>	Tender conditions Prevails
18.	Clause No. 2.11.1 GCC	<p><b>EXTENSION OF TIME FOR COMPLETION:</b></p> <p>If the completion of work as detailed in the scope of work gets delayed beyond the contract / completion period, the contractor shall request for an extension of the contract and BHEL at its discretion may extend the contract.....</p>	EOT/Time extension shall be decided by BHEL within 1 Months of receipt of EOT application submitted by us.	Tender conditions Prevails

CORRIGENDUM-1 TO TENDER SPECIFICATION BHEL: PSSR: SCT: 1976

Sl. No.	Clause ref. in Tender Document	Existing provision	Bidder's query	BHEL's Clarification
19.	Clause No. 2.14.1 GCC	<p><b>QUANTITY VARIATION:</b></p> <p>The quantities given in the contract are tentative and may change to any extent (both in plus side and minus side). The quoted rates for individual items shall remain firm irrespective of any variations in the individual quantities. No compensation becomes payable in case the variation of the final executed contract value is within the limits of Minus (-) 15% of awarded contract value.</p>	<p>The quoted rates of each item will remain firm throughout the period of execution for reasons whatsoever, as long as variation in the total value of the work executed under any part of this contract including extra items, if any, but excluding any price variation, remains within +/- 10 % (plus/minus ten percent) of the awarded price.</p> <p>The quantity variation of individual items shall remain within +/- 15 %</p>	Quantity Variation shall be as per clause no. 2.14.1 of GCC. Tender condition prevails.
20.	Clause No. 2.21 GCC	<p><b>2.21 ARBITRATION &amp; CONCILIATION</b></p> <p><b>2.21.1 ARBITRATION:</b></p> <p>Except as provided elsewhere in this Contract, in case Parties are unable to reach amicable settlement (whether by Conciliation to be conducted as provided in Clause 2.21.2 herein below or otherwise) in respect of any dispute or difference; arising out of the formation, breach, termination, validity or execution of the Contract; or, the respective rights and liabilities of the Parties; or, in relation to interpretation of any provision of the Contract; or, in any manner touching upon the Contract (hereinafter referred to as the 'Dispute'), then, either Party may, commence arbitration in</p>	<p>As per the latest honorable Supreme Court Judgement</p> <p><u><i>QUOTE:</i></u></p> <p><i>"A Party interested in the outcome of the award loses the right to appoint the Arbitrator"</i></p> <p>In view of the above it is suggested that we may select a neutral Arbitrator though <u>IITArb</u> (Indian Institute of Technical Arbitrators) or <u>ICA</u> (Indian Council of Arbitration) or through court.</p>	Tender condition prevails.

CORRIGENDUM-1 TO TENDER SPECIFICATION BHEL: PSSR: SCT: 1976

Sl. No.	Clause ref. in Tender Document	Existing provision	Bidder's query	BHEL's Clarification
		respect of such Dispute by issuance of a notice in terms of section 21 of the Arbitration & Conciliation Act, 1996 (hereinafter referred to as the 'Notice'). The Notice shall contain the particulars of all claims to be referred to arbitration in sufficient detail and shall also indicate the monetary amount of such claim. The arbitration shall be conducted by a sole arbitrator to be appointed by the Head of the BHEL Power Sector Region issuing the Contract within 60 days of receipt of the complete Notice. The language of arbitration shall be English.....		
21.		Contractor All risk (CAR) Policy	CAR Policy will be taken by BHEL	Not Agreed. Tender conditions Prevails. Bidder to quote accordingly.
22.	Bank Guarantee	Formats of Bank Guarantee's	Format will be duly vetted by our bankers & thereafter BG, SDBG & PBG will be submitted.  We will submit the Bank Guarantees from Barclay's Bank/ Societe Generale	Tender condition prevails. Bidder to quote accordingly.
23.	Bank Guarantees	Bank Guarantee extension & other action by BHEL	BHEL will give advance notice of 60 days to us for any action to be taken by BHEL	Tender conditions Prevails
24.	-	Dehumidifier and Fan Blower	Should be provided by BHEL free of cost	Dehumidifier and Fan Blower will not be provided by BHEL. Bidder to refer clause 1.4.3 and 1.5.1
25.	-	RECOVERY OF MATERIAL FREE ISSUE MATERIALS	Recovery should be as per procurement cost	Tender conditions Prevails

CORRIGENDUM-1 TO TENDER SPECIFICATION BHEL: PSSR: SCT: 1976

Sl. No.	Clause ref. in Tender Document	Existing provision	Bidder's query	BHEL's Clarification
26.	Idling Charges	Idling Charges	We will be compensated for idling of equipment, manpower etc., if the work is stopped for more than 3 days for reasons not attributable to us and due to epidemic, lock down by Government and other Force Majeure factors.	Tender conditions Prevails
27.	-	Duct & Opening	Please share the Duct dimension & opening	Drawings enclosed for tendering purpose. Bidder to refer the same. (Encl: 1 – 1 page).
28.	MSME	Not Applicable	MSME Should be applicable. Please note that we are covered under MSME.	Tender condition prevails. Bidder to quote accordingly.
29.	MSME	MSME	Hope the same can be applicable during evaluation of bidder	Bidder to refer clause no. 29 of NIT. Micro and Small Enterprises (MSE) related clause Not Applicable for this Tender. Tender conditions prevails

Note:

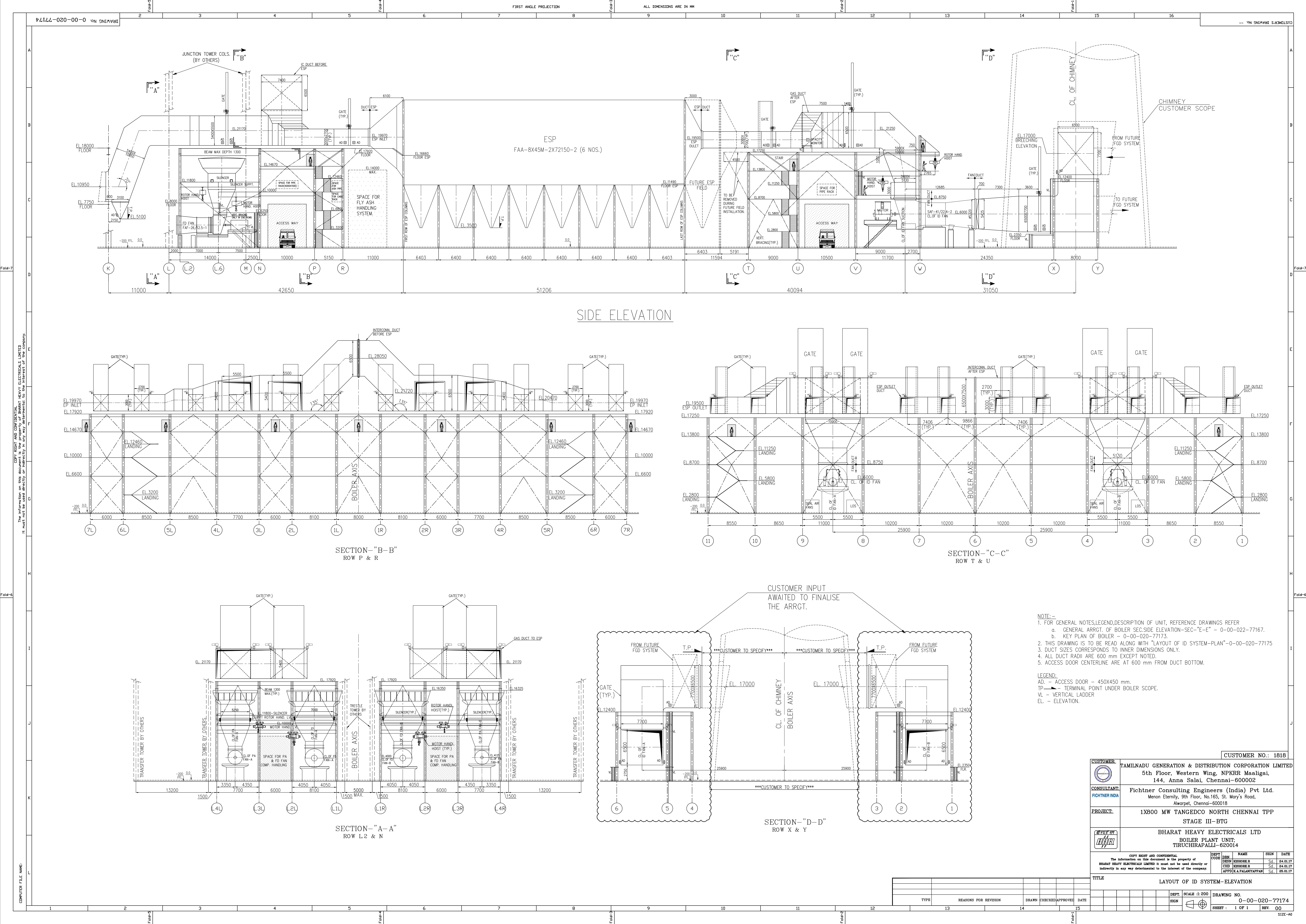
1. All other conditions remain unchanged.
2. Bidders are requested to consider this corrigendum as part of tender specification and quote accordingly.

Encl.:

1. Drawings for tendering purpose only - 01 Page
2. Form No F-15 (Rev 03) – 8 Pages

-sd-  
T.K.Eashwar  
Sr. Engineer / SCT







Project		Vendor			Package/Unit	
Sl. No.	Parameter for Measurement	Classification	Max Score	Score Obtained	Measurement Key/Scheduled date	Supporting Documents
#1.01	Cumulative number of days in the month, the nominated Quality Officer or his authorised nominee was not available	QUALITY	1.5		Quality Officer or his authorised nominee should be available for all the days of working at site	Daily Log Book entry/Incident Registers/letter references
#1.02	Number of instances of non- compliance wrt FQP, Standard Drawings, Specifications, E&C Manuals etc.	QUALITY	1.5		No deviation from FQP, Standard Drawings, Specifications, E&C Manuals etc. is allowed without BHEL Engineer's approval.	Daily Log Book entry/Incident Registers/letter references
#1.03	Percentage submission of test certificates for batches of welding electrodes, cement, sand, aggregate, consumable, Paints etc. as applicable for this month OR In case of MM & MH package, monthly checks for Storage/Preservation of material.	QUALITY	1		Submission of 100% Test certificates for materials as per FQP is mandatory. MM & MH package: Storage/Preservation as per manual/procedure.	Daily Log Book entry/Incident Registers/letter references
#1.04	Number of incidences of improper storage & preservation (not in accordance to the guidelines of BHEL MUs or approved FQP) of materials, consumables (viz. gases, welding electrodes & fluxes, fuel etc.) & bought-out items (paints, fasteners etc.) under the custody of the contractor	QUALITY	1		Total number of non-compliances	Daily Log Book entry/Incident Registers/letter references
#1.05	Rework/ Rejection instances in a month necessitated due to deviation from Standard Drawings /Specifications /Manuals /E&C procedures /FQPs or due to Poor Workmanship by contractor	QUALITY	2		Reworks/ Rejection should be as minimum as possible. Total number of reworks/ rejections due to reasons attributable to contractor.	Daily Log Book entry/Incident Registers/letter references
#1.06	Delay in preparation & submission of signed protocols / log sheets / site register / NDT test reports as per approved FQP/ Qualified Welder List along with photocopies of Welder ID cards / Welder Performance Evaluation records etc. in the month OR in case of MM / MH package reconciliation statement / verification report.	QUALITY	1		Within 2 days of measurements taken or within first 3 working days of next month, as advised by BHEL Engineer	Daily Log Book entry/Incident Registers/letter references
#1.07	Number of instances for Major equipment/product failure due to negligence/improper work/poor workmanship by contractor	QUALITY	1		No such event should happen	Daily Log Book entry/Incident Registers/letter references
#1.08	Total number of complaints received in the month on the quality of finish / aesthetics	QUALITY	1		Total number of non-compliances	Daily Log Book entry/Incident Registers/letter references

Name and Signature of BHEL Package In-charge

Name and Signature of Contractor

Project		Vendor			Package/Unit	
Sl. No.	Parameter for Measurement	Classification	Max Score	Score Obtained	Measurement Key/Scheduled date	Supporting Documents
#2.01	Cumulative number of days of delay in submission of Plan FOR THE MONTH supported by deployment plan of Major T&Ps and Manpower (as per Form F-14) and relevant construction/layout drawings - like A4 plan / elevation views of plan status for structures / pressure parts/Civil Works, Piping isometrics for piping, Layout / PID / System reference sketch, Unloading / storage plans etc.as applicable.	PERFORMANCE	5		Number of days delayed from second working day of the month	Daily Log Book entry/Incident Registers/letter references
#2.02	Percentage of timely submission of Daily Reports for Progress of work, Resources, Consumables etc.	PERFORMANCE	1.5		Percentage of timely submission of daily reports/ Scheduled date is successive next day for each day	Daily Log Book entry/Incident Registers/letter references
#2.03	Number of days delayed for submission of FQP log sheets / protocols / Monthly Progress Reports for the work executed during the month under measurement	PERFORMANCE	1.5		Number of days delayed/Scheduled date is first 2 working days of next month	Daily Log Book entry/Incident Registers/letter references
#2.04	Percentage Shortfall attributable to contractor w.r.t. "Plan - Shortfall attributable to BHEL" for the month as per Form-14	PERFORMANCE	35		As per Part-A of Form-14	Progress review formats
#2.05	Number of days delayed in submission of Running bills with complete supporting documents (including updated reconciliation statement of BHEL issued material) for the month	PERFORMANCE	2		Number of days delayed / Scheduled date is 7th day of next month	Daily Log Book entry/Incident Registers/letter references
#2.06	Number of times the Top Management of contractor did not respond to critical issues of site, for the month	PERFORMANCE	1		Total number of instances	Daily Log Book entry/Incident Registers/letter references
#2.07	Cumulative number of days in the month the works were stopped / refused on interpretation of contract clauses/scope due to tendency of taking undue advantage by interpreting contract clauses in their favour	PERFORMANCE	2		Cumulative number of days lost	Daily Log Book entry/Incident Registers/letter references
#2.08	Number of times rework was refused by contractor	PERFORMANCE	1		Total number of non-compliances	Daily Log Book entry/Incident Registers/letter references

Name and Signature of BHEL Package In-charge

Name and Signature of Contractor

Project		Vendor			Package/Unit	
Sl. No.	Parameter for Measurement	Classification	Max Score	Score Obtained	Measurement Key/Scheduled date	Supporting Documents
#2.09	Cumulative number of days in the month recording / logging was not done in daily log / history register / hindrance register / soft form in a PC maintained at BHEL Site Office	PERFORMANCE	1		Cumulative number of days recording or logging was not done / all days of the month	Daily Log Book entry/Incident Registers/letter references
#3.01	Percentage of Manpower Deployed w.r.t. Plan for the month as per Form-14.	RESOURCES	7		As per Part-B2 of Form-14	Daily Log Book entry/Incident Registers/letter references
#3.02	Percentage of T&P Deployed w.r.t. Plan for the month as per Form-14.	RESOURCES	7		As per Part-B1 of Form-14	Daily Log Book entry/Incident Registers/letter references
#3.03	Cumulative number of major instances in the month hampering / affecting progress of work due to breakdown or non-availability of major T&P and MME for the work, under the scope of Contractor	RESOURCES	3		Cumulative number of instances	Daily Log Book entry/Incident Registers/letter references
#3.04	Cumulative number of major instances in the month hampering / affecting progress of work due to non-availability of Consumables/ use of improper consumables under the scope of contractor	RESOURCES	3		Cumulative number of instances	Daily Log Book entry/Incident Registers/letter references
#4.01	Number of non-compliances during the month for Statutory requirements like validity of Labour Licence, Insurance Policy, Labour Insurance, PF, BOCW Compliance etc. and any other applicable laws/ Regulation, Electrical Licence, T&P fitness certificate, Contractors' All Risk Policy etc. as applicable	SITE INFRASTRUCTURE & SERVICE	1		Total number of non-compliances	Daily Log Book entry/Incident Registers/letter references
#4.02	Cumulative number of days in a month poor illumination is reported at storage area, erection area, pre-assembly area and other designated areas by BHEL site.	SITE INFRASTRUCTURE & SERVICE	0.5		Total number of non-compliances/random checks	Daily Log Book entry/Incident Registers/letter references
#4.03	Cumulative number of days of non-availability of well-maintained toilets facilities for workers (separate for men and women) and non-availability of potable drinking water stations for workers in specified areas.	SITE INFRASTRUCTURE & SERVICE	1		Total number of non-compliances/random checks	Daily Log Book entry/Incident Registers/letter references

Name and Signature of BHEL Package In-charge

Name and Signature of Contractor

Project		Vendor			Package/Unit	
Sl. No.	Parameter for Measurement	Classification	Max Score	Score Obtained	Measurement Key/Scheduled date	Supporting Documents
#4.04	Total number of instances in the month, Housekeeping NOT attended to in spite of instructions by BHEL -i.e. removal / disposal of surplus earth / debris / scrap / unused / surplus cable drums / other electrical items / surplus steel items / packing materials, thrown out scrap like weld butts, cotton waste etc. from the working area to identified locations	SITE INFRASTRUCTURE & SERVICE	2		Total number of non-compliances/random checks	Daily Log Book entry/Incident Registers/letter references
#4.05	Total number of instances in a month, Site Office with reasonably good facilities including enough nos. of computers and printers etc. for use by office and supporting staff was not made available/maintained.	SITE INFRASTRUCTURE & SERVICE	0.5		No discrepancy during regular or surprise visits	Photograph and report of the Engineer
#5.01	Number of days delayed in making labour payments for the last month	SITE FINANCE	2		Number of days delayed / Scheduled date is 7th day of next month	Daily Log Book entry/Incident Registers/letter references
#5.02	Number of complaints from labour/ sub supplier/ sub-contractor for non-receipt of payments from contractor	SITE FINANCE	1.5		Total number of complaints or reporting	Daily Log Book entry/Incident Registers/letter references
#5.03	Number of times the site operations were hampered for want of funds at the disposal of site-in-charge.	SITE FINANCE	1.5		Total number of non-compliances	Daily Log Book entry/Incident Registers/letter references
#6.0	Performance against HSE Parameters (as per Annexure-AA)	HSE	10		Score as per Safety Performance Evaluation System, scaled down to 10	Safety Performance Evaluation System
Total			100			

Less Deduction in Score Due to Fatal Accidents attributable to the Contractor @ 20 points/ accident	
Less Deduction in Score Due to Major Accidents (Permanent Disability or bodily injury by which person injured is prevented to resume to work within 48 hours or more after accident,, Major Damage to Equipment etc.) attributable to the contractor @ 15 points/ accident	
Less Deduction in Score Due to Minor Accidents attributable to the contractor @ 2 points/ accident	
Less Deduction in Score Due to not Maintaining of Labour Colony (if applicable) as per BHEL HSE policy @3 points in a month on verification any day	
Final Score	

Name and Signature of BHEL Package In-charge

Name and Signature of Contractor

Project		Vendor			Package/Unit	
Sl. No.	Parameter for Measurement	Classification	Max Score	Score Obtained	Measurement Key/Scheduled date	Supporting Documents
	Performance Score Summary for the Month	Total Score	Score Obtained			
	QUALITY	10				
	PERFORMANCE	50				
	RESOURCES	20				
	SITE INFRASTRUCTURE & SERVICE	5				
	SITE FINANCE	5				
	HSE	10				
	OTHERS (deductions if any)	0		-		
	TOTAL	100				

Note:

- 1) It is only indicative and shall be as per the online format issued by BHEL time to time.
- 2) No request will be entertained after specified date of current month w.r.t. changes requested in the scores of immediate previous month.

Name and Signature of BHEL Package In-charge

Name and Signature of Contractor

Monthly Safety Performance Evaluation of Contractor

SL	Parameter for Measurement	M/O	Wt	Supporting Documents
1a	Induction training for new workers conducted through audio-visual medium & documented ?	M	1	Induction Training Records
1b	Tool box talk conducted regularly as per plan, and documented?	M	1	Toolbox Talk Records
1c	Contractor in charge and safety in charge attended safety meetings?	M	2	Minutes of Meeting
1d	Whether observations in safety meetings are complied before next meeting?	M	2	-do-
1e	Preparation and submission of Monthly HSE report within stipulated time	M	1	Report submission date
1f	Preparation and submission of Incident/near-miss report and RCA Report (as applicable) within stipulated time	M	1	Incident/ Near Miss Records
1g	Carrying out Inspections and submission of Inspection reports within stipulated time	M	1	Inspection Records
1h	Regular Job Specific Training ensured for High Risk Workers (through audio-visual medium) as per plan	M	1	Training & Attendance Records
2a	Whether the contractor is registered under BOCW	M	2	BOCW Registration Certificate
2b	Availability of Qualified safety officer (1 for every 500 labour)	M	2	Safety Officer qualification & experience records
2c	Availability of Qualified safety supervisor (1 for every 100 labour )	M	2	Safety Officer qualification & experience records
2d	All the workers are provided and using safety helmets and safety shoes/gum boots	M	2	PPE Issue Records, Inspection/ non-conformity records
2e	Housekeeping done on regular basis and scrap removal at site	M	1	Housekeeping records, Inspection/ non-conformity records
2f	Usage of Goggles/Face shields and Hand gloves for gas cutter and grinders		1	PPE Issue Records, Inspection/ non-conformity records
2g	Wall openings & floor openings are guarded?		1	Inspection/ non-conformity records
2h	Adequate illumination provided in all working area?		1	Inspection/ non-conformity records
2i	Safety posters, sign boards and emergency contact numbers in all prominent location are displayed?		1	Inspection/ non-conformity records
2j	Availability of automatic reverse horns, Main horn, hook latches for Vehicles, mobile cranes, Hydras		1	Inspection/ non-conformity records
2k	Ban of carrying mobile phones to work place is implemented for workers		1	Inspection/ non-conformity records
2l	Availability of Tags & Inspection Certificates for Cranes of all capacities		1	Master T&P List with internal & external test details
2l.2	Availability of Tags & Inspection Certificates for Winches of all capacities		1	Master T&P List with internal & external test details
2l.3	Availability of Tags & Inspection Certificates, colour coding for Chain pulley blocks		1	Master T&P List with internal & external test details
2l.4	Availability of Tags & Inspection Certificates for Vehicles - Trailers, Dozers, Dumpers, Excavators, Mixers etc.		1	Master T&P List with internal & external test details
2l.5	Availability of Tags & Inspection Certificates for Welding machines, grinders, Drilling machines, etc.		1	Master T&P List with internal & external test details

2l.6	Availability of Tags & Inspection Certificates, colour coding for Wire rope slings etc.		1	Master T&P List with internal & external test details
2l.7	Availability of Tags & Inspection Certificates for Batching plants		1	Master T&P List with internal & external test details
2m.1	Use of Lifting Permit as per requirement		1	Permit Records
2m.2	Use of Height Permit as per requirement		1	Permit Records
2m.3	Use of Hot Work Permit as per requirement		1	Permit Records
2m.4	Use of Excavation permit as per requirement		1	Permit Records
2m.5	Use of Confined space work permit as per requirement		1	Permit Records
2m.6	Use of Grating removal and safety net removal permit as per requirement		1	Permit Records
2m.7	Use of Lockout-Tag out permit as per requirement		1	Permit Records
2m.8	Use of Radiography permit as per requirement		1	Permit Records
2m.9	Use of Night/ Holiday Work Permit as per requirement		1	Permit Records
2m.10	Use of Any other Applicable Permit as per requirement		1	Permit Records
3a	Material safety data sheet(MSDS) available for all chemicals and displayed in usage and storage area?		1	Inspection/ non-conformity records
3b	Spillages of oil/concrete and other chemical is controlled and cleaned by proper method in case of spill?		1	Inspection/ non-conformity records
3c	Availability of adequate number of urinals in workplace and in elevations and maintained	M	1	
3d	Availability of rest rooms for workers at site	M	1	
3e	Availability of Drinking water facility at work spot		1	
3f	Hygienic Labour colony is provided for workers.		1	
4a	Is heavy/complex critical lifting permit obtained for heavy, complex materials before handling/erection activity?		1	Work Permit records
4b	Whether area below lifting activities barricaded		1	Inspection/ non-conformity records
4c	Availability of experienced rigging foreman		1	Experience details of rigging foreman
4d	Is agency is following proper storage and handling procedure as per manufacturer standard for all hazardous material?		1	Procedure for storage & handling
4e	Are oxygen and acetylene cylinders are transported to work place from storage area in trolleys		1	
5a	Whether all deep excavation has been protected by barrier		1	Inspection/ non-conformity records
5b	Sloping/benching & shoring provided for excavation as per requirement?		1	-do-
5c	Proper access and egress provided for excavations?		1	-do-
5d	Blasting is done in controlled manner?		2	-do-
6a	Whether Electrical booth is equipped with Co <sub>2</sub> fire extinguishers and fire buckets filled with sand?		2	Inspection/ non-conformity records
6b	Availability of Illumination lamp in electric booth?		1	-do-
6c	whether Caution Boards have been displayed?		1	-do-
6d	Usage of Metal Plug top for all hand power tools ?		1	-do-
6e	Usage of Insulated welding cables.		1	-do-
6f	Electrical Booth/Distribution Board to be covered by proper Canopy.		1	-do-
6g	Availability of functional & individual 30ma ELCB / RCCB and MCB for protection and conducting periodical check-up?		1	-do-
6h	Double earthing for panel boards and all machinery & proper earth pit with regular inspection available?		1	-do-
6i	Whether Electrician is qualified and experienced		1	Qualification & Experience records of electrician
6j	Availability and usage of Rubber hand gloves by electrician?		1	Inspection/ non-conformity records



7a	Whether Scaffolding pipes made with steel or aluminium, are being used and checked periodically by experienced/ certified scaffolder?		2	Inspection/ non-conformity records
7b	8mm Stainless Steel wire rope with plastic cladding is provided for life line (Vertical / Horizontal) during height work?		2	-do-
7c	Availability of emergency lighting in case of power failure		1	-do-
7d	Whether all the openings are covered with Safety Nets made of fire proof Nylon?		1	-do-
7e	Whether MS pipe rails around staircases & platforms in usage are provided with top, middle rails and toe guard ?		1	-do-
7f	Whether Ladder with vertical life line /Fall arrestor is available to climb?		1	-do-
7g	Whether all workers deployed for working at height have been issued height pass after undergoing vertigo test?		1	Height Pass records
7h	Whether all workers deployed for height work / climbing ladder are provided and using Double lanyard safety belt?		1	PPE Issue records, inspection/ non-conformity reports
7i	Is all hand tools/Small material used by height workers is tied firmly to prevent fall?		1	-do-
8a	Flash back arrestors for all gas cutting sets is available on Torch side and cylinder side		1	Inspection/ non-conformity records
8b	Oxygen/Acetylene/LPG cylinders not in use have caps in place and stored separately?		1	-do-
8c	Availability of Face screen, Hand gloves, and Apron, for welders		1	-do-
8d	Protection from falling hot molten metal during metal cutting / welding at height by providing GI sheet below the cutting area especially in fire prone areas		1	-do-
9a	Pre-employment medical check-up done for all workers and submitted?		1	Medical check records
9b	Availability of first aid centre, with MBBS doctor(Own or Sharing basis)	M	2	Attendance records
9c	Availability of Ambulance facility 24 hours (Own or sharing basis)	M	2	-do-
9d	Is First aid trained personnel's are available and their names are displayed at site?	M	1	-do-
9e	Availability of Emergency vehicle at site		1	
9f	Periodical medical check-up is conducted for all the workers and submitted?		1	Medical check records
9g	Availability of sufficient number of first aid box as per standard list and maintaining record		1	Inspection records
10a	Availability of Fire extinguishers, buckets at all vulnerable points		2	Fire extinguisher records
10b	Periodic fire mock drill conducted?		1	Fire, Mock drill records
10c	Are all flammable materials are stored separately?		1	
10d	Periodic grass cutting is done in material storage area?		1	
10e	Availability of 24V DC lighting in confined space work area		1	
10f	Availability of exhaust fan in confined space work area		1	

Note:

- Ø M: Mandatory; O: Optional. Points other than mandatory can be excluded with appropriate justification (scope etc.) by BHEL. Score obtained in selected parameters divided by maximum possible score of selected parameters shall be multiplied by 10 for use in as per point Sl. no. # 6.0 as detailed at page 4 of Form F-15.
- Ø There shall be deduction of marks from overall score for Fatal/ Major/ Minor Accidents and for not maintaining labour colony, as detailed at page 4 of Form F-15.