

SCHEDULE 2

LOCK PIN FOR CPE PLUG AND ADAPTOR

LOCK PIN FOR CPE PLUG AND ADAPTOR

DRAWING NO.: 40-ST-123-02-631/00

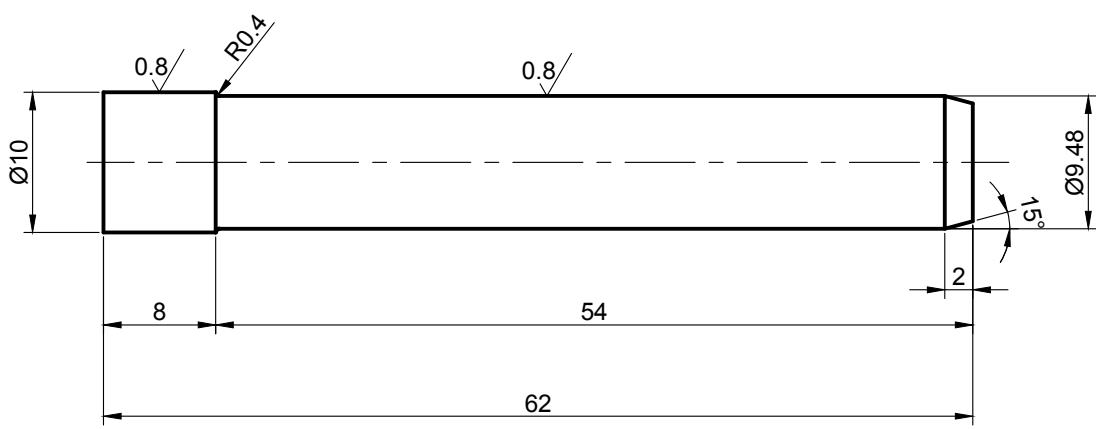
ALL DIMENSIONS ARE IN MM

| | | |
|-----|------|----------|
| REV | DATE | ALTERED |
| 01 | | CHECKED |
| | | APPROVED |

0.8/1

DEVIATIONS OF UNTOLERANCED DIMENSIONS TO BE AS PER IS:2102-1969 MEDIUM.

| | |
|----------|--------|
| | -0.016 |
| Ø9.48 f7 | -0.034 |



HARDEN AND TEMPER TO 28-32HRC
MATERIAL CODE No.: 6905123212

CAUTION: THE INFORMATION ON THIS DOCUMENT IS THE PROPERTY OF BHARAT HEAVY ELECTRICALS LIMITED. IT MUST NOT BE USED DIRECTLY OR INDIRECTLY IN ANY WAY DETRIMENTAL TO THE INTEREST OF THE COMPANY.

| | | | | | | | |
|------------------------------------|--|---------------------|--|--------------------|--|-------------------|--|
| | | Ø10X62 | | DIN1.7225 | | | |
| ITEM NO | | DESCRIPTION | | DRAWING NO | | UNIT WT | |
| | | | | | | 42CrMo4 | |
| | | | | | | MATL SPEC | |
| | | | | | | QTY | |
| EQPT: | | | | | | | |
| DEPT | | GRADE OF UNTOL. DIM | | SCALE | | WEIGHT (Kg) | |
| TE | | Ø/M/F | | 2:1 | | 0.1 | |
| CODE | | IS: 2102 | | REF TO ASSY DWG NO | | REF TO OLD DWG NO | |
| 456 | | | | 10-ST-123-00-182 | | 0101053-06.171 | |
| TITLE | | | | CARD CODE | | ITEM | |
| LOCK PIN (FOR CPE PLUG ADAPTOR) | | | | U 01 | | 13 | |
| | | | | DRAWING NO : | | REV | |
| | | | | 40-ST-123-02-631 | | 00 | |

A4-SIZE