

## **SCHEDULE 1**

### **ROD ADAPTOR L170MM (30.411/03)**

ROD ADAPTOR L170 MM

M16-M16 DIA 25 MM

DRAWING No- - 30-ST-222-04-411-03

SL- No- - 02

## **SCHEDULE 2**

### **ROD ADAPTOR L170 MM (30.411/03)**

ROD ADAPTOR L170 MM

M16-M16 DIA 25 MM

DRAWING No- - 30-ST-222-04-411-03

SL- No- - 05

## **SCHEDULE 3**

### **ROD ADAPTOR L170 MM (30.411/03)**

ROD ADAPTOR L170 MM

M16-M16 DIA 25 MM

DRAWING No- - 30-ST-222-04-411-03

SL- No- - 03

## **SCHEDULE 4**

### **ROD ADAPTOR L170 MM (30.411/03)**

ROD ADAPTOR L170 MM

M16-M16 DIA 25 MM

DRAWING No- - 30-ST-222-04-411-03

SL- No- - 01

## **SCHEDULE 5**

### **ROD ADAPTOR L105 MM (40.554/02)**

ROD ADAPTOR L105MM

M16-M10 DIA 25MM

DRAWING NO- - 40-ST-222-03-554-02

SL-NO- - 01

## **SCHEDULE 6**

### **ROD ADAPTOR L105MM (40.554/02)**

ROD ADAPTOR L105MM

M16-M10 DIA 25MM

DRAWING NO- - 40-ST-222-03-554-02

SL-NO- - 02

## **SCHEDULE 7**

### **ROD ADAPTOR L105MM (40.554/02)**

ROD ADAPTOR L105MM

M16-M10 DIA 25MM

DRAWING NO- - 40-ST-222-03-554-02

SL-NO- - 03

## **SCHEDULE 8**

### **ROD ADAPTOR L105MM (40.554/02)**

ROD ADAPTOR L105MM

M16-M10 DIA 25MM

DRAWING NO- - 40-ST-222-03-554-02

SL-NO- - 04

## **SCHEDULE 9**

### **ROD ADAPTOR L105MM (40.554/02)**

ROD ADAPTOR L105MM

M16-M10 DIA 25MM

DRAWING NO- - 40-ST-222-03-554-02

SL-NO- - 05

## **SCHEDULE 10**

### **ROD ADAPTOR L105MM (40.554/02)**

ROD ADAPTOR L105MM

M16-M10 DIA 25MM

DRAWING NO- - 40-ST-222-03-554-02

SL-NO- - 06

## **SCHEDULE 11**

### **ROD ADAPTOR L105 mm (40 - 554/02)**

ROD ADAPTOR L105MM

M16-M10 DIA 25MM

DRAWING NO- - 40-ST-222-03-554-02

SL-NO- - 07

## **SCHEDULE 12**

### **ROD ADAPTOR L105 MM (40.554/02)**

ROD ADAPTOR L105MM

M16-M10 DIA 25MM

DRAWING NO- - 40-ST-222-03-554-02

SL-NO- - 08

## **SCHEDULE 13**

### **ROD ADAPTOR L105 MM (40.554/02)**

ROD ADAPTOR L105MM

M16-M10 DIA 25MM

DRAWING NO- - 40-ST-222-03-554-02

SL-NO- - 10

## **SCHEDULE 14**

### **ROD ADAPTOR L105 MM (40.554/02)**

ROD ADAPTOR L105MM

M16-M10 DIA 25MM

DRAWING NO- - 40-ST-222-03-554-02

SL-NO- - 12

## **SCHEDULE 15**

### **ROD ADAPTOR L105 MM (40.554/02)**

ROD ADAPTOR L105MM

M16-M10 DIA 25MM

DRAWING NO- - 40-ST-222-03-554-02

SL-NO- - 13

## **SCHEDULE 16**

### **ROD ADAPTOR L105 MM (40.554/02)**

ROD ADAPTOR L105MM

M16-M10 DIA 25MM

DRAWING NO- - 40-ST-222-03-554-02

SL-NO- - 14

## **SCHEDULE 17**

### **ROD ADAPTOR L105 MM (40.554/02)**

ROD ADAPTOR L105MM

M16-M10 DIA 25MM

DRAWING NO- - 40-ST-222-03-554-02

SL-NO- - 15

## **SCHEDULE 18**

### **ROD ADAPTOR L105 MM (40.554/02)**

ROD ADAPTOR L105MM

M16-M10 DIA 25MM

DRAWING NO- - 40-ST-222-03-554-02

SL-NO- - 16

## **SCHEDULE 19**

### **ROD ADAPTOR L105 MM (40.554/02)**

PLUG ADAPTOR L105MM,

M12-M8,

DRAWING NO- - 40-ST-222-03-421-05,

SL-NO- 02

## **SCHEDULE 20**

### **ROD ADAPTOR L105 MM (40.554/02)**

PLUG ADAPTOR L105MM,

M12-M8,

DRAWING NO- - 40-ST-222-03-421-05,

SL-NO- 03

## **SCHEDULE 21**

### **ROD ADAPTOR L105 MM (40.554/02)**

PLUG ADAPTOR L105MM,

M12-M8,

DRAWING NO- - 40-ST-222-03-421-05,

SL-NO- 08

## **SCHEDULE 22**

### **ROD ADAPTOR L105 MM (40.554/02)**

PLUG ADAPTOR L105MM,

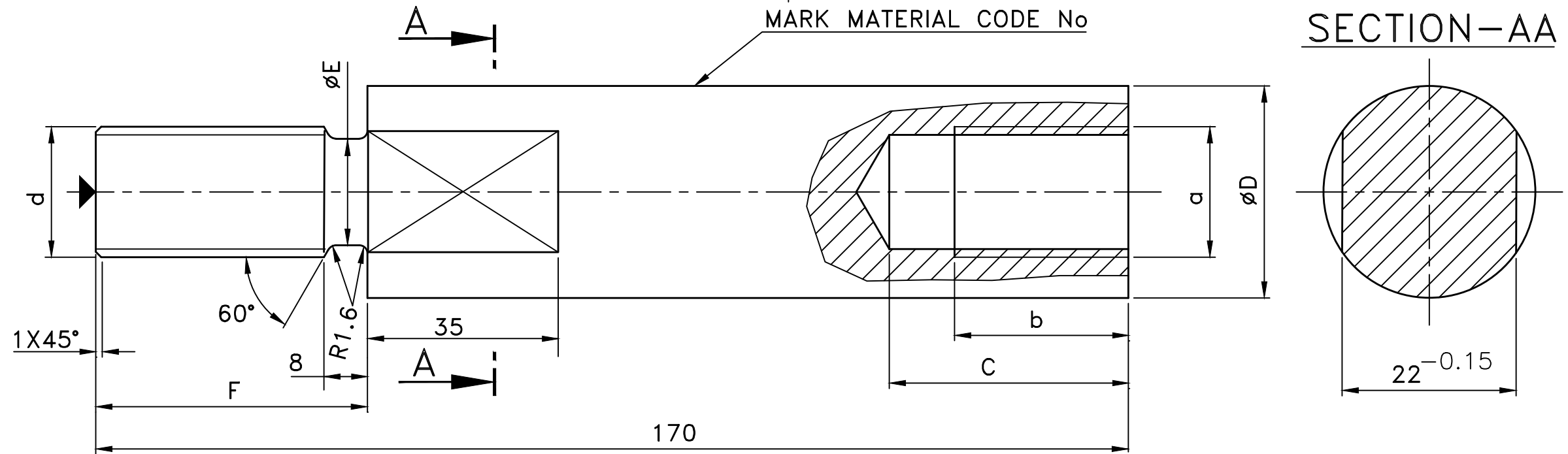
M12-M8,

DRAWING NO- - 40-ST-222-03-421-05,

SL-NO- 11

CAUTION: THE INFORMATION ON THIS DOCUMENT IS THE PROPERTY OF BHARAT HEAVY ELECTRICALS LTD IT MUST NOT BE USED DIRECTLY OR INDIRECTLY IN ANYWAY DETERMINAL TO INTEREST OF THE COMPANY

ALL DIMENSIONS ARE IN MILLIMETERS



SL No	D	a	b	C	d	E	F	WT	MATERIAL CODE No
01	25	M14	32	40	M16	13	35	1.35	69 22 21 334 4
02		M16		42				1.20	69 22 21 306 9
03		M20	35	44				1.15	69 22 21 328 0
04	30	M20	32	44	M20	16.4	45	1.55	69 22 21 307 7
05		M16		42				1.65	69 22 21 307 8

MATERIAL:45C8 IS:5517-1993  
HARDEN & TEMPER TO 30-32 HRC

REV 02		DATE 10.10.09	ALTERED : APPROVED	DEPT T E	GRADE OF UNTOL. DIM C/M/F	SCALE N T S	WEIGHT(kg)	DRN R.KUMAR	NAME R.KUMAR	SIGNATURE	DATE 10.10.09
ZONE 14 SIZES ARE DELETED(NOT IN USE) DIMN.140 DELETED IN SL.No.04 D VALUE 30 WAS 32				CODE				APPD S.KARUPPASAMY			
TITLE ROD ADAPTOR-L170							CARD CODE U 01	REF TO ASSY DWG NO 10...024	REF TO OLD DWG NO 20...180/01	DRAWING NO : 30.ST.222.04.411	ITEM NO 1 REV 03

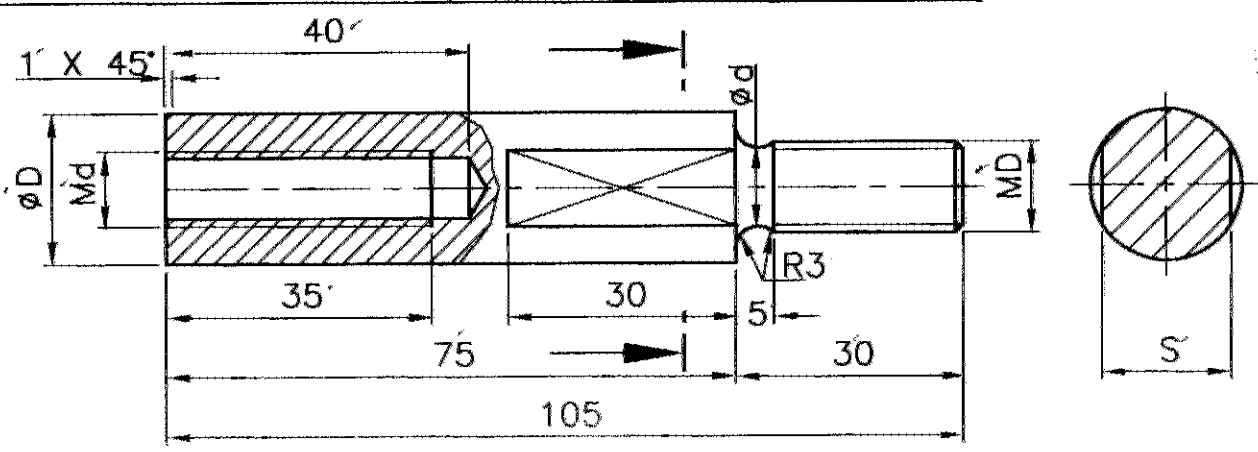


Bharat Heavy Electricals Ltd  
SEAMLESS STEEL TUBE PLANT  
TIRUCHIRAPALLI - 620014

ALL DIMENSIONS ARE IN MM

CAUTION: THE INFORMATION ON THIS DOCUMENT IS THE PROPERTY OF BHARAT HEAVY ELECTRICALS LTD IT MUST NOT BE USED DIRECTLY OR INDIRECTLY IN ANYWAY DETERMINANTAL TO INTEREST OF THE COMPANY

REV	DATE	ALTERED	REV	DATE	ALTERED
		CHECKED			CHECKED
		APPROVED			APPROVED



SL No	D	MD	Md	S	d	WT.Kg	MATERIAL CODE No
01	15			12		0.10	69 23 53 020 2
02	18	M12	M8	14	10	0.14	69 23 53 021 0
03			M10			0.18	69 23 53 022 9
04	22	M16	M12	18	14	0.23	69 23 53 023 7
05	25	M20	M16	22	18	0.28	69 23 53 024 5
06			M14			0.32	69 23 53 025 3
07	13	M10	M6	11	7.7	0.09	69 23 53 026 1
08			M8			0.10	69 23 53 027 0
09	20	M12	M10	17	10	0.25	69 23 53 028 8
10			-M12			0.23	69 23 53 029 6
11	23	M20	M10	19	21	0.26	69 23 53 030 0
12	32	M20	M14	28	18	0.28	69 23 53 031 8
13	35	M20	M16	28	18	0.25	69 23 53 032 6
14			M16			0.30	69 23 53 033 4
15	22	M16	M6	18	14	0.36	69 23 53 034 2
16			M10			0.25	69 23 53 035 0
17	25	M20	M10	22	18	0.24	69 23 53 036 9
18			M6			0.33	69 23 53 037 7
19	13	M8	M6	11	7.7	0.35	69 23 53 038 5
20			M6			0.09	69 23 53 039 3

USE DRG 40/554  
260404

USE DRG 40/554  
260404

HARDEN AND TEMPER TO 120Kg/mm<sup>2</sup>

MATERIAL: 40Ni2Cr1Mo28



Bharat Heavy Electricals Ltd  
SEAMLESS STEEL TUBE PLANT  
TIRUCHIRAPALLI - 620014

DRN	NAME	SIGNATURE	DATE
CHD	R.KUMAR	R.Kumar	11.08.94
APPD	P. GANESAN		

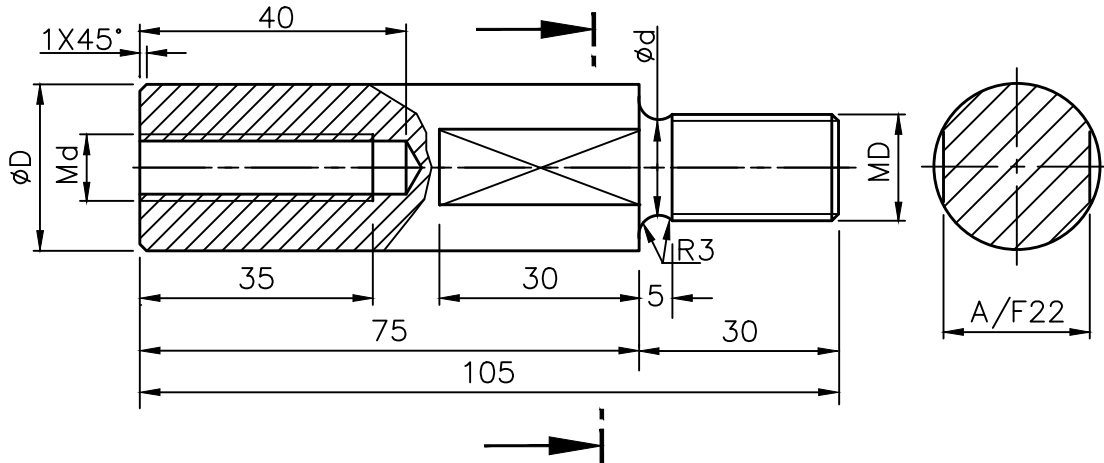
DEPT	GRADE OF UNTOOL DIM	SCALE	WEIGHT (Kg)	REF TO ASSY DRG	ITEM NO
T E	C/M/F	1:1		REF TO OLD DRG	
CODE				DRAWING NO :	REV
				40-ST-222.03-421	05
TITLE			CARD CODE		
PLUG ADAPTOR			U 01		

ALL DIMENSIONS ARE IN MM

CAUTION: THE INFORMATION ON THIS DOCUMENT IS THE PROPERTY OF BHARAT HEAVY ELECTRICALS LTD  
IT MUST NOT BE USED DIRECTLY OR INDIRECTLY IN ANYWAY DETERMINAL TO INTEREST OF THE COMPANY

REV 02	DATE 10.10.09	ALTERED
		APPROVED
SL.No.07 TO 16 ADDED MATL.45C8 WAS 40NiCr1Mo28 HARDNESS30-32 WAS 35±2RC		


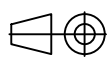
1.6  
✓



SL No	D	MD	Md	d	WT.Kg	MATERIAL CODE No
01	25	M16	M10	14	0.25	69 23 53 041 2
02			M12		0.26	69 23 53 042 0
03			M16		0.28	69 23 53 043 9
04		M20	M10	18	0.35	69 23 53 044 7
05			M12		0.38	69 23 53 045 5
06			M16		0.40	69 23 53 046 3
07			M14		0.39	69 23 53 047 1
08	M16	M14	14	0.27	69 23 53 047 2	
09	30	M16	M10	14	0.35	69 23 53 047 3
10			M12		0.36	69 23 53 047 4
11			M14		0.38	69 23 53 047 5
12			M16		0.45	69 23 53 047 6
13		M20	M10	18	0.48	69 23 53 047 7
14			M12		0.52	69 23 53 047 8
15			M16		0.55	69 23 53 047 9
16			M14		0.59	69 23 53 048 0

HARDEN AND TEMPER TO 30-32 HRC

MATERIAL: 45C8 IS: 5517-1993

		Bharat Heavy Electricals Ltd		DRN	NAME	SIGNATURE	DATE
		SEAMLESS STEEL TUBE PLANT TIRUCHIRAPALLI - 620014		CHD	R.KUMAR		10.10.09
DEPT	GRADE OF		SCALE	WEIGHT (Kg)	REF TO ASSY DRG		ITEM NO
T E	UNTOL. DIM		1:1		REF TO OLD DRG		
CODE	C/M/F				DRAWING NO :		REV
TITLE				CARD CODE	40-ST-222.03-554		02
ROD ADAPTOR-(L105)				U 01			

## Pre-Qualifying Criteria

1. The vendor should have supplied similar machining tools to any of production, manufacturing, support services departments in any Central/State/Govt organisation/PSU Company/ Public Listed company during the last 7 Financial years (2016-17 to 2022-23).
2. Work Order copy of the same is to be furnished.

D

ABHIGHNA

Digitally signed  
by D ABHIGHNA

Date: 2023.09.20  
11:36:33 +05'30'