

## **SCHEDULE 1**

### **TCT SAW BLADE DIA.730 UNCOATED**

TCT SAW BLADE DIA.730 UNCOATED AND RESHARPENABLE.

DRAWING NO.: 30-ST-102-01-544/01

BLADE DIA.: 730 mm

BLADE BORE: 80

NO OF TEETH: 64

CUTTING WIDTH: 5.50 mm

BLADE BODY THICKNESS: 4.0 mm

PIN HOLES: DIA .32 x 8 Nos. @ PCD 200mm

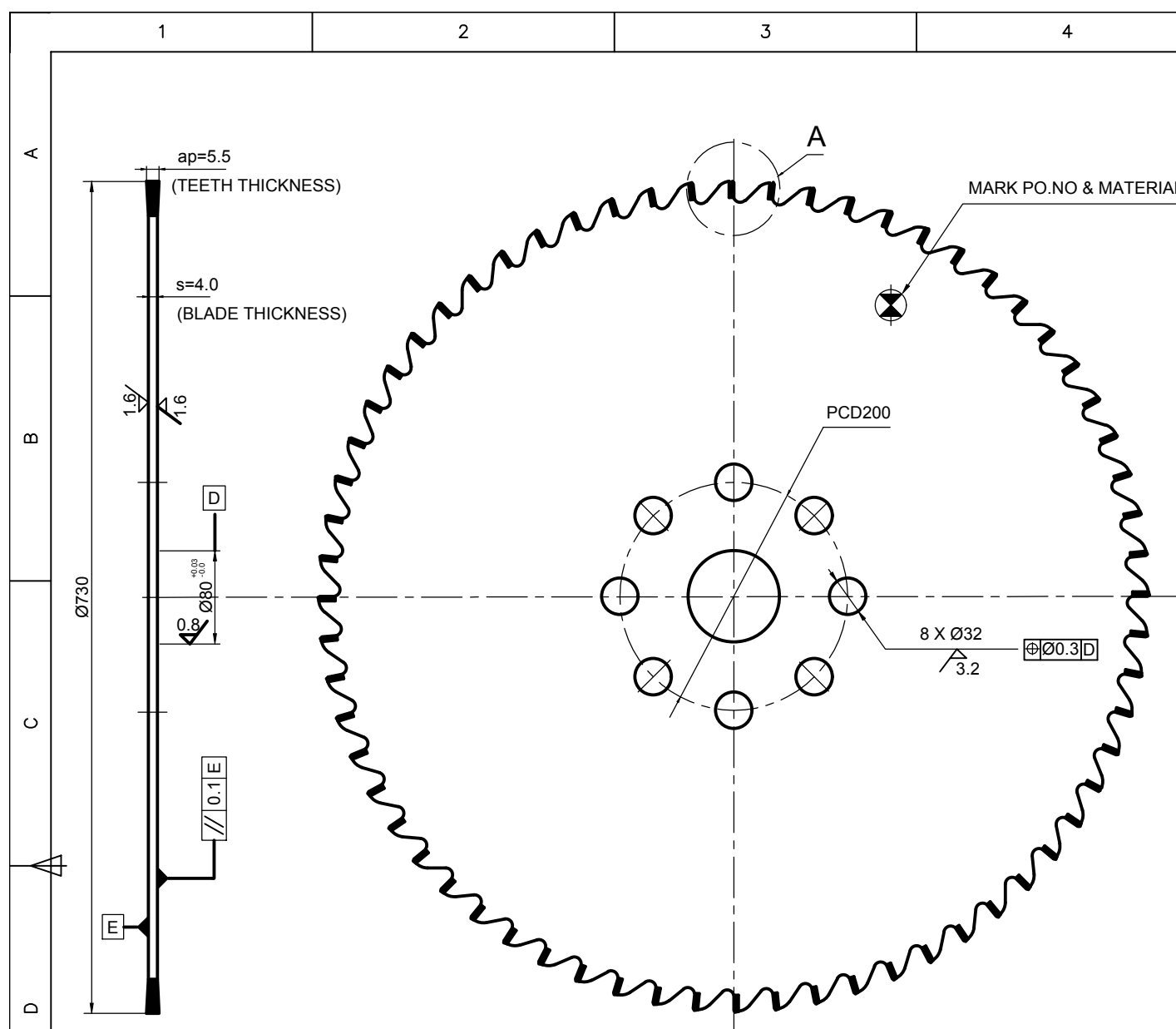
GEOMETRY: CHIP BREAKER/CHIP DEFLECTOR:

-UNCOATED/RESHARPENABLE

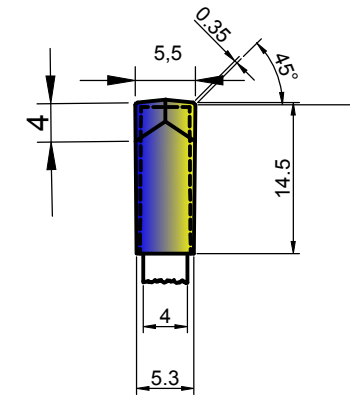
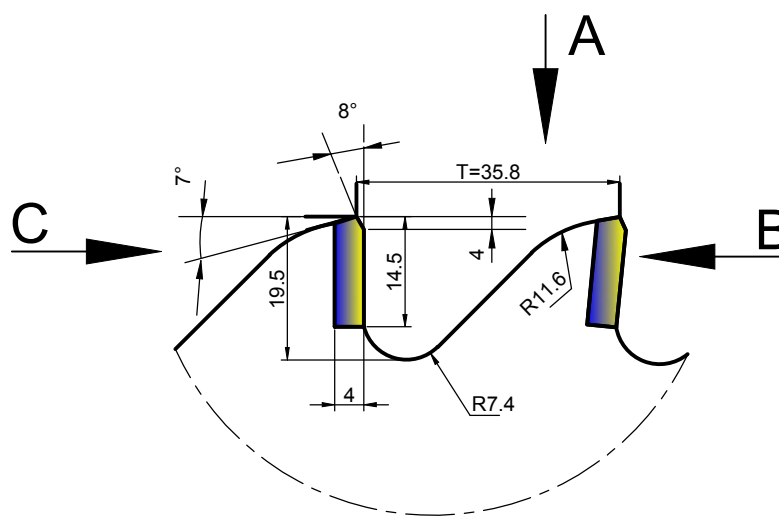
APPLICATION: CUTTING OF BLOOM DIA.200mm: -CARBON STEEL/ALLOY STEEL /  
T91

ALL DIMENSIONS ARE IN MILLIMETERS

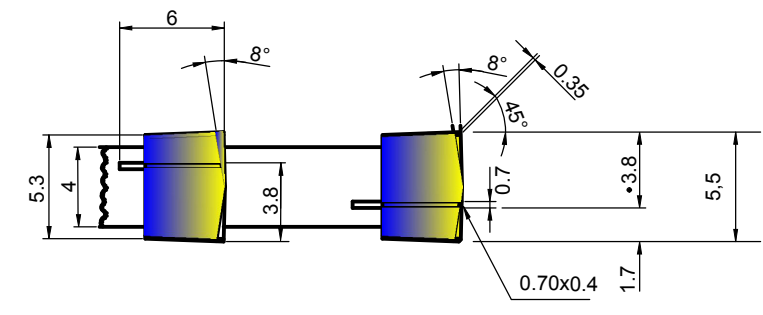
3.2/ 1.6/ 0.8/   
 DEVIATIONS OF UNTOLERANCED DIMENSIONS TO BE AS PER IS:2102-1969 MEDIUM



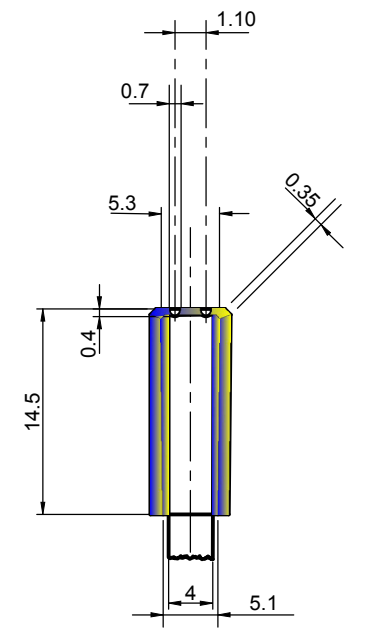
**DETAIL-A (NTS)**



**VIEW B**



**VIEW A**



**VIEW C**

- NOTE :**
1. CHIP BREAKER POSITIONS CHANGE IN ALTERNATE TEETH
  2. BLADE SHOULD BE FREE FROM BEND

**ITEM NO:01**

BODY (DISK) MATERIAL: ANY ONE OF THE FOLLOWING MATERIAL SHALL BE USED.

- MATERIAL:
- 1) SKS 51 JADAN
  - 2) 75 Ni8 DIN 1.5634
  - 3) 1.2235, 80 CrV2

**ITEM NO:02**

TEETH MATERIAL  
Carbide P25(Sand vik SM25)

MATERIAL CODE No:SP69 12 11 0003

REV	DATE	ALTERED :	APPROVED :
01	06.03.17	Redd	M. Marudhavanan
DETAILED VIEWS ADDED			

CAUTION: THE INFORMATION ON THIS DOCUMENT IS THE PROPERTY OF BHARAT HEAVY ELECTRICALS LIMITED. IT MUST NOT BE USED DIRECTLY OR INDIRECTLY IN ANY WAY DETRIMENTAL TO THE INTEREST OF THE COMPANY.		ITEM NO	DESCRIPTION	DRAWING NO	MATL CODE	UNIT WT
					MATL SPEC	QTY
EQPT:						
DEPT SSSP/TE		GRADE OF UNTOL DIM		SCALE	WEIGHT (Kg)	
456		φ/M/f IS:2102		NTS	-	
TITLE		CARD CODE		REF TO ASSY DWG NO		
TCT SAW BLADE Ø730X64				REF TO OLD DWG NO		
				DRAWING NO :		
				30-ST-102-01-544		
				REV		
				01		