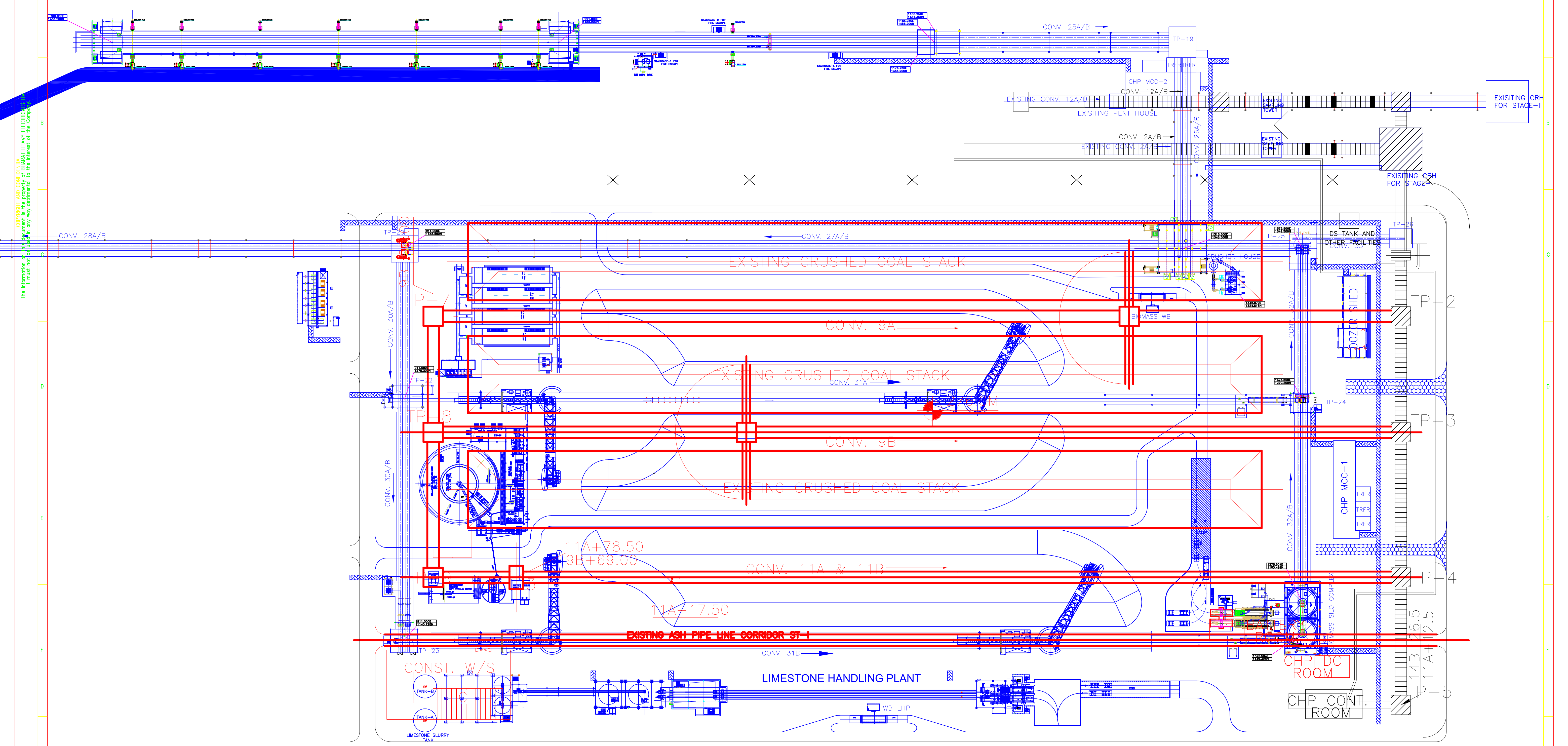


Pre-bid Clarifications-3
Stacker cum Reclaimer Package for Singrauli STPP Stage-III (2x800 MW)
BHEL Tender ref. No. 77/24/6007/BPA

Sl. No.	Clarification by BHEL
TECHNICAL CLARIFICATIONS	
1	<p>Bidder is aware that as per NTPC NIT Technical specification, the proposed yard conveyors and Stacker cum Reclaimer Machines of Stage-III (2 x 800 MW) shall be erected in the existing stockpile of Stage-I (5 x 200 MW).</p> <p>Bidder to take note of Coal Stockyard layout attached as Annexure-29 in which Existing facilities (of Stage-I) & new facilities to be made for Stage-III are superimposed. Bidder to also note that dismantling of existing facilities will happen in phased manner.</p>
2	<p>As it can be seen in the Annexure-29, Existing Stage-I conveyor 11A/B is in close vicinity to Stacker cum Reclaimer Machine-2 & conveyor 11A/B will be operational during construction of Stage-III facilities. So bidder to accordingly plan the erection of Stacker cum Reclaimer Machine-2 without affecting the operation of conveyor 11A/B.</p>
3	<p>It is planned to store crushed coal in the Limestone Handling Plant (LHP) region (Ref. Annexure-29) temporarily. So bidder has to design Stacker cum Reclaimer Machine-2 for handling coal from Stock pile-3 as well as temporary stored stock pile in LHP region, i.e., on the both sides of Yard conveyor 31B.</p>
4	<p>Since Stacker cum Reclaimer Machine-2 is very close to LHP facilities on the other side of Yard Conveyor-31B, bidder to thoroughly review & adopt Machine counterweight side design suitably to avoid any fouling with LHP facilities. If required, Jib type counterweight design may be considered by bidder for Stacker cum Reclaimer Machine-2.</p>

ANNEXURE-29



- NOTES:
- 1. EXISTING FACILITIES SHOWN IN RED - SHALL BE DISMANTLED IN PHASED MANNER
 - 2. STAGE-III PROPOSED FACILITIES ARE SHOWN IN BLUE

OWNER/CONSULTANT

NTPC Limited

ENGINEERING DIVISION
(A GOVERNMENT OF INDIA ENTERPRISE)

PROJECT

SINGRAULI SUPER THERMAL POWER PROJECT

STAGE-III (2x800MW)

MAIN CONTRACTOR:

BHARAT HEAVY ELECTRICALS LTD.

INDUSTRIAL SYSTEMS GROUP, BANGALORE

JOB No.		STATUS OF DRAWING		DISTRIBUTION OF PRINTS		QTY.	REV.		NAME	SIGN	DATE	NO. OF VAR
00		ALTERED					00					
		CHECKED										
		APPROVED										
ZONE												
DIRECTORY :							SCALE		WEIGHT(Kgs.)	NTPC DRAWING NO.		NO. OF ITEMS
FILE NO. :							N.T.S.			BHEL DRAWING NO.		REV.
TITLE :							COAL STOCKYARD LAYOUT			STAGE-I & STAGE-III (SUPERIMPOSED)		00
SHEET NO.										NO. OF SHTS.		SIZE-A1