



Bharat Heavy Electricals Limited

Heavy Equipment Repair Plant (HERP)

Tarna, Shivpur, Varanasi - 221003

Enquiry Ref No.: **HERP/OT/E-578-20-0088-68-1**

Dated 27.03.2021

TENDER DOCUMENT

PART I: TECHNO-COMMERCIAL BID

PART II: PRICE BID &

PART III: - SUPPLIER REGISTRATION FORM (SRF)

TENDER FOR SUPPLY OF BATTERY 36 V at HERP, VARANASI



**MATERIALS MANAGEMENT DEPARTMENT
BHARAT HEAVY ELECTRICALS LIMITED
HEAVY EQUIPMENT REPAIR PLANT
TARNA, SHIVPUR
VARANASI – 221 003, UTTAR PRADESH**

TABLE OF CONTENTS

SL.No.	Section	Annexure	REQUIRED IN TENDER PART
01	NOTICE INVITING TENDER	I	-
02	SUPPLIER REGISTRATION FORM (SRF)	II	PART-I
03	SPECIAL INSTRUCTION TO BIDDERS	III	-
04	GUIDELINES FOR FOREIGN VENDORS	IV	-
05	ITEM DETAILS AND DELIVERY SCHEDULE	V	
06	PRE QUALIFICATION REQUIREMENT & TECHNICAL SPECIFICATIONS	VI	PART-I
07	GENERAL TERMS AND CONDITIONS OF TENDER	VII	PART-I
08	DETAILS OF COMPOSITION OF PART-I (TECHNO-COMMERCIAL BID), PART-II (PRICE BID) & PART-III (VENDOR REGISTRATION FORM)	VIII	-
09	ANNEXURE – A	A	PART-I



Bharat Heavy Electricals Limited

Heavy Equipment Repair Plant (HERP)

Tarna, Shivpur, Varanasi - 221003

NOTICE INVITING TENDER

Enquiry Ref No. : HERP/OT/E-578-20-0088-68-1 Dated 27.03.2021

Annexure-I

The Heavy Equipment Repair Plant (HERP) located in Varanasi, Uttar Pradesh, India is one of the manufacturing plants of Bharat Heavy Electricals Ltd. The core business of HERP includes supply of Bowl Mill Spares and Turbine Spares. Sealed tenders with the Tender No. and opening date clearly super scribed on the cover are invited from the interested parties (registered as well as unregistered) for the supply of the items mentioned at Annexure-V.

The tender documents, Supplier Registration Form (SRF) & Drawings/Specification of item can be downloaded from our web site www.bhel.com, <https://herp.bhel.com> and www.eprocure.gov.in. BHEL will not issue tender in hard copy. It shall be downloaded from the above mentioned websites.

*The bid against the enquiry shall be submitted only at e mail id: **tenderherp@bhel.in** and the bid shall not be marked as CC/BCC to any other email ID in our organization.*

The bid shall be submitted in two parts attached with same e mail i.e. techno commercial bid and price bid.

*The price bid shall be password protected pdf file and the password for the same shall be submitted by bidder **after** intimation from BHEL regarding the opening of the price bid on same e mail id as mentioned above i.e. **tenderherp@bhel.in**.*

Tenders will be received up to 02.00 P.M. on **05.04.2021** and will be opened on the same day at 02.30 P.M. **Please note that tender received after due date & time may not be opened.** BHEL will not be responsible for any type of delay.

Amendments / Corrigendum, if any, will be hosted on above mentioned websites only. Other terms and conditions will be as per tender documents.

2. For any information/clarification, vendor may contact the following executives of HERP:

1. Shri. Abhishek
Sr. Engineer (Purchase)
Ph No: - 0542-2720867
Email: - abhishek@bhel.in

2. Shri. Ashutosh Singh
Manager (MM)
Ph No: - 0542-2720862
Email: - ashutosh@bhel.in



Bharat Heavy Electricals Limited
Heavy Equipment Repair Plant (HERP)

Tarna, Shivpur, Varanasi - 221003

Annexure-I

Part-III - Supplier Registration Documents and Part-I-Techno Commercial bid:-

Part I & III of the sealed tenders will be opened by BHEL on the date of opening of this tender .

Part-II - Price bid:-

The price bid should contain prices only. Price bid will be opened only for those parties who have qualified in techno - commercial bid.

Note: - BHEL takes no responsibility for any delay / loss of documents. Late tenders shall be rejected out rightly.





Bharat Heavy Electricals Limited
Heavy Equipment Repair Plant (HERP)

Tarna, Shivpur, Varanasi - 221003

Annexure-II

SUPPLIER REGISTRATION FORM

Supplier Registration Form for indigenous and foreign vendors is enclosed as per Annexure- C and Annexure – D respectively along with tender.

(PDF Format attached, 08 Pages for indigenous and 04 Pages for foreign vendors)

Note: Vendors who are already registered at BHEL, HERP, Varanasi need not to submit the Supplier Registration Form. They need to mention their Supplier Code only.





Bharat Heavy Electricals Limited

Heavy Equipment Repair Plant (HERP)

Tarna, Shivpur, Varanasi - 221003

Annexure-III

SPECIAL INSTRUCTIONS TO BIDDERS FOR OPEN TENDER DEFINITION

a. Registered Vendors - Are those who are registered with BHEL, HERP, Varanasi.

b. Un-registered Vendors - Are those who are not registered with BHEL, HERP, Varanasi.

c. ESSENTIAL INSTRUCTIONS:

1. The tenders shall be submitted in two parts as described above on or before the due date:

- i. Part I - Techno -Commercial Bid,
- ii. Part II - Price Bid

2. Part-II (Price Bids) along with supplementary price bids if any will be opened at the subsequently decided date of only those bidders whose techno-commercial bid has been found to be acceptable/suitable.

3. Currency exchange rate (TT selling rate of SBI) will be applicable on the date of opening of Part-I (Techno-commercial Bid) for evaluation purpose.

4. Evaluation of Bid: - The bid shall be evaluated on Cost to BHEL basis. The loading /other cost, if any determined at later stage, shall be communicated to the vendor.

5. Tenders when finalized shall be in the name of the bidder only and change of name during tender evaluation (without certificate from registrar of company) and after submission of the tender is liable to make the offer ineligible for participation.

6. BHEL will evaluate the technical bids against essential criteria/requirements. BHEL may seek clarifications, if required, from the bidders. **The offers of those bidders, who are unable to respond in specified time frame, may likely to be ignored/may be processed further with the terms and conditions already submitted with the respective bidder's risk and cost .**

7. Suitability of delivery shall be the important criteria for evaluation of techno commercial bid and the bids falling within the delivery period and meeting the last delivery requirement shall be considered. Delivery period quoted by the parties beyond the required delivery period may not be considered.

8. FINALITY OF MANAGEMENT DECISION

At all places in the preceding clauses, BHEL Management's decision shall be final.

IN CASE YOU ARE NOT MAKING AN OFFER AGAINST THIS ENQUIRY, THEN PLEASE ARRANGE TO SEND A LETTER OF REGRET IF YOU HAVE DOWNLOADED THE TENDER DOCUMENTS.

Annexure-IV**IMPORTANT GUIDELINES FOR FOREIGN VENDORS**

- a) BHEL shall deal directly with foreign vendors, wherever required, for procurement of equipment/machine/goods. However, if the foreign principal desires to avail of the services of an Indian agent, then the foreign principal should ensure compliance to regulatory guidelines – which require mandatory submission of an Agency Agreement.
- b) It shall be incumbent on the Indian agent and the foreign principal to adhere to the relevant guidelines of Government of India, issued from time to time.
- c) The Agency Agreement should specify the precise relationship between the foreign OEM / foreign principal and their Indian agent and their mutual interest in the business. All services to be rendered by agent/associate, whether of general nature or in relation to the particular contract, must be clearly stated by the foreign supplier / Indian agent. Any payment, which the agent or associate receives in India or abroad from the OEM, whether as commission or as a general retainer fee should be brought on record in the Agreement and be made explicit in order to ensure compliance to laws of the country.
- d) Any agency commission to be paid by BHEL to the Indian agent shall be in Indian currency only.
- e) Tax deduction at source is applicable to the agency commission paid to the Indian agent as per the prevailing rules.
- f) In the absence of any agency agreement, BHEL shall not deal with any Indian agent (authorized representatives / associate / consultant, or by whatever name called) and shall directly with the foreign principal only for all correspondence and business purposes.
- g) The “Guidelines for Indian Agents of Foreign Suppliers” enclosed at **Annexure – “B”** shall apply in all such cases.
- h) The supply and execution of the Purchase Order (including indigenous supplies/service) shall be in the scope of the OEM/foreign principal. The OEM/foreign principal should submit their offer inclusive of all indigenous supplies/services and evaluation will be based on ‘total cost to BHEL’. In case OEM/foreign principal recommends placement of order(s) towards indigenous portion of supplies/services on Indian supplier(s)/agent on their behalf, the credentials/capacity/capability of the Indian supplier(s)/agent to make the supplies/services shall be checked by BHEL as per the extant guidelines of Supplier Evaluation, Approval & Review Procedure (SEARP), before opening of price bids . It will be the responsibility of the OEM/foreign principal to get acquainted with the evaluation requirements of Indian supplier/agent as per SERAP available on www.bhel.com.
- i) The responsibility for successful execution of the contract (including indigenous supplies/services) lies with the OEM/foreign principal.

**Bharat Heavy Electricals Limited****Heavy Equipment Repair Plant (HERP)****Tarna, Shivpur, Varanasi - 221003****Annexure-V****ITEM DETAILS AND DELIVERY SCHEDULE**

SI. No	MATERIAL CODE	ITEM DESCRIPTION	QTY.	DELIVERY REQUIRED
1.	RVJ302000356	SUPPLY OF NEW PRECHARGED 36 V (2.0 V x 18, 210 Ah LEAD ACID TRACTION BATTERY AGAINST BUYBACK OF EXISTING DEFECTIVE TRACTION BATTERY; AS PER TECHNICAL SPECIFICATION ANNEXURE-A ATTACHED.	1 No.	30 DAYS FROM THE DATE OF PO.





Bharat Heavy Electricals Limited

Heavy Equipment Repair Plant (HERP)

Tarna, Shिवपुर, Varanasi - 221003

Annexure-VI

PRE QUALIFICATION REQUIREMENT & TECHNICAL SPECIFICATIONS

SL. No		Vendor 's Confirmation
1	MATERIAL TO BE SUPPLIED AT BHEL STORES.	
2	ITEMS ARE REQUIRED WITHIN 30 DAYS FROM DATE OF PLACEMENT OF PURCHASE ORDER, HOWEVER EARLY DELIVERY MAY BE ACCEPTED.	
3	PACKING INSTRUCTION: BATTERY TO BE SUPPLIED IN PROPERLY PACKED CONDITION TO AVOID ANY DAMAGE DURING TRANSIT AND HANDLING.	
4	INSPECTION WILL BE CARRIED OUT AT BHEL HERP STORES.	
5	BATTERY IS REQUIRED AGAINST BUYBACK OF OLD BATTERY (36 VOLT, 2 x 9 IMF-11 MAKE: EXIDE); PARTIES ARE REQUIRED TO QUOTE THEIR RATE ALONG WITH RATE FOR BUY BACK OF OLD BATTERY ALSO IN THEIR OFFER AS PER ATTACHED PRICE BID FORMAT.	
6	OLD BATTERY WILL BE ISSUED TO THE PARTY ON INSTALLATION AND ENSURING SATISFACTORY WORKING OF NEW BATTERY.	
7	GUARANTEE CERTIFICATE: STANDARD MANUFACTURER WARRANTY SHALL BE APPLICABLE AGAINST MANUFACTURING DEFECT, PERFORMANCE AND WORKMANSHIP FOR A MINIMUM PERIOD OF 24 MONTHS FROM THE DATE OF ACCEPTANCE OF MATERIAL AT HERP.	
8	PRE-QUALIFYING CRITERIA: BIDDER MUST BE OEM OR AUTHORIZED DEALER. IN CASE BIDDER IS AUTHORIZED DEALER, BIDDER MUST SUBMIT VALID DEALER AUTHORIZATION CERTIFICATE ISSUED BY OEM.	
9	BATTERY SHALL BE SUPPLIED IN PRE-CHARGED CONDITION WITHOUT ANY ADDITIONAL COST.	
10	THE TECHNICAL BID SHOULD CLEARLY MENTION COMPLIANCE OF OUR TECHNICAL SPECIFICATION ANNEXURE-A AND GA DRAWING ANNEXURE-B.	
11	BATTERY IS REQUIRED FOR OUR 5 TON BATTERY OPERATED TRANSFER TROLLEY.	
12	TECHNICAL SPECIFICATION ANNEXURE-A AND GA DRAWING ANNEXURE-B	



Bharat Heavy Electricals Limited

Heavy Equipment Repair Plant (HERP)

Tarna, Shivpur, Varanasi - 221003

Annexure-VII

GENERAL TERMS & CONDITIONS OF THE TENDER

Sl No	BHEL STANDARD TERMS & CONDITIONS	CONFIRMATION OF SUPPLIER YES / NO
1	<p>A) OFFER MUST BE SUBMITTED IN TWO PART BID SYSTEM NAMELY TECHNO-COMMERCIAL BID & PRICE BID FOR THE ITEM AS PER ENQUIRY IN SEPARATE SEALED COVERS:</p> <p>(I) TECHNO – COMMERCIAL BID & (II) PRICE BID SHOULD BE CLEARLY SUPERSCRIBED THE ENQUIRY NO. AND DUE DATE ON THE ENVELOPES.</p> <p>(B) UN-PRICED OFFER WITH TECHNICAL BID IS REQUIRED TO BE FURNISHED BY THE VENDOR. TECHNICAL OFFER SHOULD CLEARLY REFLECT AT LEAST OUR MATERIAL CODE, ITEM DESCRIPTION & QUANTITY.</p> <p>(C) THE DIFFERENCE BETWEEN “UN-PRICED OFFER” AND “PRICED OFFER” SHOULD BE ONLY THE PRICES WHEREVER APPLICABLE. THE RATES AND AMOUNT SHOULD BE CLEARLY WRITTEN IN FIGURES AND WORDS BOTH WITHOUT ANY CUTTING / OVERWRITING.</p> <p>(D) IMPORTANT POINT FOR VENDOR WHO HAVE NOT SUBMITTED THE SRF (SUPPLIER REGISTRATION FORM) SO FAR: THE VENDORS, WHO HAVE NOT SUBMITTED THE SRF SO FAR, MUST SUBMIT THE SAME ALONG WITH PART- 1 BID. THE SRF TO BE DOWNLOADED FROM WWW.BHEL.COM OR https://herp.bhel.com.</p>	
2	PART-I CONTAINING THE TECHNO-COMMERCIAL BID WILL BE OPENED ON THE DATE AND TIME SPECIFIED IN THE ENQUIRY, IN THE PRESENCE OF THOSE TENDERERS WHO WISH TO ATTEND. PART-II i.e., PRICE BID WILL BE OPENED ONLY OF THOSE BIDDERS WHO ARE FOUND TECHNO-COMMERCIALLY SUITABLE AFTER SCRUTINY OF THEIR PART-I OFFERS.	
3	NO REVISED OFFERS WILL BE ACCEPTED UNLESS ASKED BY BHEL AFTER OPENING OF PART-1 BID IN ANY CASE.	
4	THE TENDER RECEIVED AFTER 14:00 HRS ON THE DUE DATE WILL NOT BE CONSIDERED.	
5	YOUR TECHNO COMMERCIAL BID SHOULD MENTION THAT PRICE BID HAS BEEN SENT IN A SEPARATE ENVELOPE GIVING ITS REFERENCE.	
6	BID SHOULD BE FREE FROM CORRECTION , OVERWRITING , USING CORRECTIVE FLUID , ETC. ANY INTERLINEATION , CUTTING , ERASURE OR OVERWRITING SHALL BE VALID ONLY IF THEY ARE ATTESTED UNDER FULL SIGNATURE(S) OF PERSON(S) SIGNING THE BID ELSE BID SHALL BE LIABLE FOR REJECTION .	
7	PRICING TERMS: PRICES ONCE QUOTED SHALL REMAIN FIRM WITHIN THE VALIDITY OR ANY EXTENSION THEREOF FOR PLACEMENT OF ORDER, TILL COMPLETE EXECUTION OF THE ORDER, WITHOUT ANY ESCALATION/INCREASE FOR ANY REASON, WHATSOEVER, UNLESS SPECIFICALLY PROVIDED FOR IN THE ENQUIRY & PO. IN CASE OF FOREIGN VENDORS, THE QUOTED PRICE SHALL BE TAKEN AS INCLUSIVE OF THIRD PARTY INSPECTION AND TESTING CHARGES AS CALLED FOR IN THE NIT.	
8	VALIDITY OF OFFER SHOULD BE MINIMUM 90 DAYS FROM THE DATE OF TECHNO - COMMERCIAL BID OPENING OR 60 DAYS FROM THE REVERSE AUCTION DATE.	
9	UNLESS SPECIFIED IN THE TENDER, VENDOR MUST NOTE THAT BHEL WILL ARRIVE THE L1 STATUS FOR EACH ITEM ON LANDED COST BASIS. ACCORDINGLY ORDER SHALL BE PLACED ON LOWEST BIDDER ON INDIVIDUAL ITEM BASIS ONLY, UNLESS BHEL ASK FOR TERMS OTHER THAN THIS ON EXCEPTION BASIS. IN THE COURSE OF EVALUATION, IF MORE THAN ONE BIDDER HAPPENS TO OCCUPY L-1 STATUS, EFFECTIVE L-1 WILL BE DECIDED BY SOLICITING DISCOUNTS FROM THE RESPECTIVE L-1 BIDDERS. IN CASE MORE THAN ONE BIDDERS HAPPENS TO OCCUPY THE L-1 STATUS EVEN AFTER SOLICITING DISCOUNT , THE L-1 BIDDER SHALL BE DECIDED BY A TOSS/DRAW OF LOTS , IN THE PRESENCE OF THE RESPECTIVE BIDDER(S) OR THEIR REPRESENTATIVE(S) .RANKING WILL BE DONE ACCORDINGLY. BHEL'S DECISION IN SUCH SITUATION SHALL BE FINAL AND BINDING.	
10	PLEASE MAKE SURE THAT THERE IS NO DISCREPANCY IN BETWEEN ACCEPTED TERMS & CONDITIONS MENTIONED IN THE CHECK LIST AND QUOTATION SUBMITTED BY VENDOR AND IF FOUND SO THEN THE TERMS & CONDITIONS WHICH ARE BENEFICIAL TO BHEL WOULD ONLY BE CONSIDERED.	
11	VENDOR TO ENSURE THAT ITEM & QUANTITY MENTIONED IN THE OFFERS ARE EXACTLY SAME AS PER ENQUIRY. IF ANY DEVIATION IS THERE PARTY MUST MENTION SPECIFIC HERewith OTHERWISE BHEL SHALL CONSIDER THAT ITEM & QUANTITY AS REQUIRED IN ENQUIRY.	
12	BHEL RESERVES THE RIGHT TO REJECT THE OFFER, WHICH IS HAVING DEVIATIONS TO THE TERMS AND CONDITIONS GIVEN IN THE TENDER ENQUIRY.	
13	GST IF APPLICABLE WILL BE PAID EXTRA AGAINST DOCUMENTARY PROOF. THE RATE OF GST SHOULD BE CLEARLY MENTIONED IN THE OFFER.	
14	<p>TERMS OF DELIVERY:</p> <p>I. FOR INDIGENOUS SUPPLIERS: THE TERMS OF DELIVERY SHOULD BE QUOTED ON F.O.R. DESTINATION (BHEL HERP STORES VARANASI) BASIS ONLY (i.e. FREIGHT & INSURANCE ON VENDOR'S ACCOUNT ONLY). IF ANY BIDDER STILL QUOTES OTHER DELIVERY TERM IN PLACE OF BHEL HERP STORES, THEIR OFFER MAY NOT BE CONSIDERED FOR FURTHER PROCESSING. IT MUST BE SPECIFICALLY NOTED.</p> <p>II. FOR FOREIGN SUPPLIER: TERMS OF DELIVERY SHOULD BE QUOTED ON CIF JNPT MUMBAI (INDIA) SEA PORT BASIS (i.e. FREIGHT & INSURANCE ON VENDOR'S ACCOUNT UPTO JNPT MUMBAI (INDIA) SEA PORT) OR CFR MUMBAI AIRPORT. HOWEVER FREIGHT CHARGES AS PER BHEL TRANSPORT CONTRACT FROM MUMBAI TO BHEL VARANASI WILL BE LOADED AT THE TIME OF TOTAL LANDED COST CALCULATION FOR EACH ITEM.</p>	
15	IF ANY INDIAN SUPPLIERS ARRANGE SUPPLY FROM FOREIGN PRINCIPLES/WORKS, TERMS OF DELIVERY SHOULD BE QUOTED ON CIF JNPT MUMBAI (INDIA) SEA PORT BASIS ONLY (i.e. FREIGHT & INSURANCE ON VENDOR'S ACCOUNT UPTO JNPT MUMBAI (INDIA) SEA PORT) OR CFR MUMBAI AIRPORT. HOWEVER FREIGHT CHARGES AS PER BHEL TRANSPORT CONTRACT FROM JNPT MUMBAI SEAPORT/MUMBAI AIRPORT TO BHEL VARANASI FOR EACH ITEM WILL BE LOADED AT THE TIME OF TOTAL LANDED COST CALCULATION.	
16	INSURANCE CHARGES SHALL BE TO VENDOR'S ACCOUNT ONLY IF PRICE QUOTED ON BHEL HERP STORES BASIS. IN CASE PRICE QUOTED IS ON CIF JNPT MUMBAI BASIS/ CFR MUMBAI AIRPORT BASIS, INSURANCE UP TO CIF JNPT MUMBAI/ MUMBAI AIRPORT SHALL BE IN VENDOR ACCOUNT.	
17	<p>PAYMENT TERMS:</p> <p>I.FOR MSEs VENDORS: 100% AGAINST SRV WITHIN 45 DAYS THROUGH EFT (ELECTRONIC FUND TRANSFER) FROM THE DATE OF RECEIPT OF MATERIAL (DATE OF SRV) AT BHEL HERP VARANASI STORES AS PER PO. IF ANY SUPPLIER FALLS UNDER NON MSE CATEGORY, THEIR PAYMENT TERM WILL BE CONSIDERED AS NON MSE SUPPLIER PAYMENT WITHOUT ANY INTIMATION.</p> <p>II. FOR OTHER SUPPLIERS: 100% AGAINST SRV WITHIN 60 DAYS THROUGH EFT (ELECTRONIC FUND TRANSFER) FROM THE DATE OF RECEIPT OF MATERIAL (DATE OF SRV) AT BHEL HERP VARANASI STORES AS PER PO.</p>	



Bharat Heavy Electricals Limited

Heavy Equipment Repair Plant (HERP)

Tarna, Shivpur, Varanasi - 221003

	<p>III.BHEL HERP WILL MAKE PAYMENTS IN TWO PARTS :-</p> <p>PART-I: BASIC INVOICE VALUE AND ALL OTHER CHARGES (EXCEPT GST AMOUNT) WILL BE PAID AS PER P.O. PAYMENT TERMS.</p> <p>PART-II: GST PORTION OF INVOICE VALUE WILL BE PAID ONLY AFTER FULFILLING FOLLOWING CONDITIONS:</p> <p>(A) PAYMENT OF GST AMOUNT INTO GOVT.ACCOUNT BY SUPPLIER AGAINST INVOICE RAISED TO BHEL.</p> <p>(B) FILING OF GST RETURN WITHIN SCHEDULED DATE.</p> <p>(C) DISPLAY OF GST CREDIT AGAINST BHEL GSTIN NO.09AAACB4146P22C ON GSTN PORTAL.</p> <p>IV.NOTE: ADVANCE PAYMENT IS NOT ACCEPTABLE BY BHEL HERP VARANASI IN ANY CASE.</p>	
18	LOADING OF PAYMENT TERM: IN CASE OF DEVAITION, LOADING OF INTEREST RATE @SBI MCLR RATE + 6% (AS ON PART-1 OPENING DATE) SHALL BE LOADED WHILE ARRIVING AT LANDED COST TO BHEL.	
19	<p>IMPORTANT INSTRUCTION FOR MSEs SUPPLIERS:</p> <p>I. "MSE SUPPLIERS CAN AVAIL THE INTENDED BENEFITS ONLY IF THEY SUBMIT ALONG WITH OFFER, ATTESTED COPIES OF EITHER EM-II CERTIFICATE HAVING DEEMED VALIDITY (FIVE YEARS FROM THE DATE OF ISSUE OF ACKNOWLEDGEMENT IN EM-II) OR VALID NSIC CERTIFICATE OR EM-II CERTIFICATE ALONG WITH CA CERTIFICATE (FORMAT ENCLOSED AS PER ANNEXURE-1 WHERE DEEMED VALIDITY OF EM-II CERTIFICATE OF FIVE YEARS HAS EXPIRED) APPLICABLE FOR THE RELEVANT F/Y (LATEST AUDITED).DATE TO BE RECKONED FOR DETERMINING THE DEEMED VALIDITY WILL BE THE DATE OF BID OPENING (PART -1 IN CASE OF TWO PART BID). NON SUBMISSION OF SUCH DOCUMENTS WILL LEAD TO CONSIDERATION OF THEIR BID AT PAR WITH OTHER BIDDERS. NO BENEFIT SHALL BE APPLICABLE FOR THIS ENQUIRY IF ANY DEFICIENCY IN THE ABOVE REQUIRED DOCUMENTS ARE NOT SUBMITTED BEFORE PRICE BID OPENING. IF THE TENDER IS TO BE SUBMITTED THROUGH e-procurement PORTAL, THEN THE ABOVE REQUIRED DOCUMENTS ARE TO BE UPLOADED ON THE PORTAL. DOCUMENTS SHOULD BE NOTARIZED OR ATTESTED BY A GAZETTED OFFICE.</p> <p>II.IN CASE OF ANY CHANGE IN THE MSE STATUS OF THE BIDDER, IT SHALL BE RESPONSIBILITY OF THE BIDDER TO NOTIFY THE CHANGE AS A PART OF THE BID DOCUMENT. IF AT A LATER DATE IT COMES TO NOTICE OF BHEL, THAT THE CHANGE IN THE STATUS HAS NOT BEEN INTIMATED BY THE BIDDER AND THE ORDER IS OBTAINED UNDER THE PREMISE OF AN MSE, THEN BHEL WOULD CANCEL THE PENDING ORDER AGAINST THIS TENDER AND TAKE NECESSARY ACTION SUSPENSION OF THE BUSSINESS DEALING WITH THE BIDDER AS PER PROCUREMENT POLICY OF BHEL.</p> <p>III.25 % OF THE TENDERED QUANTITY IS EARMARKED FOR MSE SUPPLIERS IN THIS TENDER.</p> <p>IV.OUT OF THIS 25% TENDERED QUANTITY RESERVED FOR MSE SUPPLIERS, 6.25% SHALL BE EARMARKED FOR PROCUREMENT FROM MSEs OWNED BY SC/ST ENTREPRENEURS.</p> <p>V.OUT OF THIS 25% TENDERED QUANTITY RESERVED FOR MSE SUPPLIERS, 3% SHALL BE EARMARKED FOR PROCUREMENT FROM MSEs OWNED BY WOMEN.</p> <p>VI.IN CASE MSE VENDOR PARTICIPATING IN THE TENDER QUOTES WITHIN THE PRICE BAND OF "L1+15%", THEY WILL BE ALLOWED TO SUPPLY THE 25% PORTION OF THE REQUIREMENT SUBJECT TO ACCEPTANCE OF L1 PRICE (ON LANDED COST BASIS) BY MSE VENDOR. IN CASE OF MORE THAN ONE SUCH MSE VENDOR WITHIN THE "L1+15% PRICE BAND" THE SUPPLY SHALL BE SHARED PROPORTIONATELY (TO 25% TENDERED QUANTITY).</p> <p>VII.IF THE L1 VENDOR HAPPENS TO BE A MSE VENDOR AGAINST ANY ITEM CODE, THEN 100% OF THE TENDERED QTY (FOR RESPECTIVE ITEM CODE) SHALL BE PROPOSED TO ORDER ON THE L1 (MSE) VENDOR, EVEN THOUGH THERE MAY BE OTHER MSE VENDORS WITHIN THE "L1+15% PRICE BAND".</p> <p>VIII.IN CASE AFTER OPENING OF PRICE BID, IT IS SEEN THAT NO MSE HAS BECOME L1, THEN DEPENDING ON THE NATURE OF THE ITEM, IF IT IS NOT POSSIBLE TO SPLIT THE TENDERED ITEMS/QUANTITIES ON ACCOUNT OF REASONS LIKE CUSTOMER CONTRACT REQUIREMENTS OF SUPPLYING ONE MAKE FOR A GIVEN PROJECT OR TECHNICAL REASONS LIKE TENDERED ITEMS BEING A SYSTEM etc. THEN BHEL WOULD NOT COUNTER OFFER THE L1 PRICES EVEN THOUGH THERE MAY BE MSE BIDDERS WITHIN THE "L1+15% PRICE BAND" OF L1.</p>	
20	<p>LIQUIDATED DAMAGES (LD): SUBJECT TO FORCE MAJEURE CONDITIONS, FAILURE TO SUPPLY WITHIN PURCHASE ORDER DELIVERY SCHEDULE WILL MAKE THE SUPPLIER LIABLE TO AN UNCONDITIONAL PENALTY OF 0.5 % PER WEEK OR PART THEREOF SUBJECT TO THE MAXIMUM OF 10% OF THE UNDELIVERED PURCHASE ORDER VALUE EXCLUDING TAXES & DUTIES. NO GRACE PERIOD SHALL BE GIVEN. FURTHER, IN CASE OF LD RECOVERY, THE APPLICABLE GST SHALL ALSO BE RECOVERABLE FROM THE SUPPLIERS.</p>	
21	<p>LOADING OF LIQUIDATED DAMAGES (LD): DEVIATION TO ABOVE STANDARD PENALTY CLAUSE, MAXIMUM LOADING OF 10% (IN CASE OF NON ACCEPTANCE OF LD CLAUSE) OR PART THEREOF (IN CASE OF PART ACCEPTANCE OF LD) SHALL BE LOADED WHILE ARRIVING LANDED COST TO BHEL.</p> <p>FURTHER IF DEVIATION IS FOUND IN THE ACCEPTED DELIVERY TERM AS WELL AS ACCEPTED PENALTY TERM, SUITABLE LOADING BASED ON TRANSPORTATION TIME TO BE TAKEN SHALL BE LOADED WHILE ARRIVING LANDED COST TO BHEL HERP STORES WHICH MAY BE AS BELOW:</p> <p>(i) 1% OF THE BASIC COST FOR INDIAN SUPPLIERS,</p> <p>(ii) 2% OF THE BASIC COST IF FOREIGN VEDNOR ACCEPTS PENALTY FROM BILL OF LADING DATE &</p> <p>(iii) 3% OF THE BAISC COST IF FOREIGN VENDOR ACCEPTS PENALTY FROM THE INSPECTION DATE.</p>	
22	<p>DELIVERY PERIOD: DELIVERY PERIOD FOR ALL THE ITEMS SHALL BE 30 DAYS FROM THE DATE OF PURCHASE ORDER. HOWEVER, EARLY DELIVERY IS ACCEPTABLE.</p>	
23	IF ANY VENDOR DOES NOT SUPPLY THE ITEM WITHIN THE PURCHASE ORDER DELIVERY PERIOD, BHEL MAY/MAY NOT ACCEPT THE SUPPLY AT ITS SOLE DISCRETION.	
24	<p>RISK PURCHASE: IN CASE OF DELAY IN SUPPLIES/ DEFECTIVE SUPPLIES/NON EXECUTION OF PURCHASE ORDER ETC.(FOR DETAILS, REFER GUIDELINES FOR RISK PURCHASE), BHEL MAY CANCEL THE ORDER IN FULL OR PART THEREOF/ MAY ALSO MAKE THE PURCHASE OF SUCH MATERIALS FROM ELSEWHERE/ALTERNATIVE SOURCES AT THE RISK & COST OF SUPPLIER.BHEL MAY ALSO MANUFACTURE THE ITEM IN-HOUSE IN PART OR FULL DEPENDING UPON THE URGENCY OF THE ITEM.</p> <p>GUIDELINES FOR RISK PURCHASE IS AVAILABLE ON BHEL WEBSITE "www.herp.bhel.com" at "Notice". RESPECTIVE BIDDERS / SUPPLIERS MAY REFER THIS GUIDELINE BEFORE SUBMITTING THEIR OFFER AGAINST BHEL, HERP TENDER ENQUIRIES. IN CASE RISK PURCHASE IS APPLIED, BHEL SHALL TAKE ACTION AGAINST THE NON-PERFORMING AND/OR DEFAULTING SUPPLIERS/ CONTRACTORS IN LINE WITH THIS GUIDELINE ONLY</p>	
25	<p>BHEL MAY SHORT CLOSE/CANCEL AN ORDER AT ANY TIME DURING THE CURRENCY OF THE CONTRACT/PO IRRESPECTIVE OF THE PO DELIVERY DATE, IF</p> <p>(I) THE WORK PROGRESS OF THE VENDOR IS POOR, OR</p> <p>(II) THE DELIVERY REQUIREMENT OF THE ITEM IS VERY CRITICAL & NOT BEING MET BY THE VENDOR ON WHICH ORDER HAS BEEN PLACED,OR</p> <p>(III) THERE IS NO RESPONSE FOR IMPROVEMENT IN DELIVERY AS PER BHEL REQUIREMENT,</p>	
26	THE OFFERS OF THE BIDDERS WHO ARE ON THE BANNED LIST AND ALSO THE OFFER OF THE BIDDERS, WHO ENGAGE THE SERVICES OF THE BANNED FIRMS, SHALL BE REJECTED. THE LIST OF BANNED FIRMS IS AVAILABLE ON BHEL WEB SITE www.bhel.com	



Bharat Heavy Electricals Limited

Heavy Equipment Repair Plant (HERP)

Tarna, Shivpur, Varanasi - 221003

27	RESERVATION RIGHTS OF BHEL: – BHEL RESERVES THE RIGHT TO REJECT ANY OR ALL QUOTATIONS WITHOUT ASSIGNING ANY REASONS THEREOF. BHEL ALSO RESERVES THE RIGHT TO INCREASE OR DECREASE THE TENDERED QUANTITIES. VENDORS SHOULD BE PREPARED TO ACCEPT ORDER FOR REDUCED QUANTITIES WITHOUT ANY EXTRA CHARGES. VENDOR SHOULD ALSO BE PREPARED FOR GIVING DISCOUNT IN CASE OF INCREASE IN QUANTITY.	
28	NON-DISCLOSURE AGREEMENT: ALL DRAWINGS AND STANDARDS ARE PROPRIETARY OF BHEL. IT MUST NOT BE USED IN ANY WAY DETRIMENTAL TO THE INTEREST OF THE COMPANY. ALL SUPPLIERS SHALL FURNISH NDAS (NON-DISCLOSURE AGREEMENT) AGAINST USE OF DOCUMENTS FURNISHED BY BHEL TOWARDS UN-AUTHORIZED USE EXCEPT FOR THE PURPOSE IT HAS BEEN FURNISHED.	
29	A.SETTLEMENT OF DISPUTES & ARBITRATION: I.ALL QUESTIONS/INTERPRETATIONS REGARDING SUBJECT MATTER OF THE CONTRACT SHALL BE DECIDED BY THE BHEL ON THE REQUEST OF THE VENDOR AND THE DECISION OF THE BHEL SHALL BE FINAL. II.IN CASE OF DISPUTE, STEPS SHALL BE TAKEN BY THE PARTIES TO THE CONTRACT TO SETTLE THE SAME THROUGH NEGOTIATIONS. III.IN CASE, DISPUTE IS NOT SETTLED IN NEGOTIATIONS, IT SHALL BE REFERRED TO CONCILIATOR APPOINTED BY THE COMPETENT AUTHORITY OF THE BHEL. THE CONCILIATION PROCEEDINGS WITH RESPECT TO A DISPUTE AS DEFINED IN THE BHEL CONCILIATION SCHEME , 2018 AND SUBSEQUENT REVISIONS CAN BE INITIATED UNDER THE SCHEME AT ANY STAGE WHETHER BEFORE , DURING OR EVEN AFTER THE COMMENCEMENT OF ARBITRATION PROCEEDINGS OR LITIGATION BEFORE COURTS . THIS CONCILIATION SCHEME IS AVAILABLE ON OUR WEBSITES WWW.HERP.BHEL.COM AND WWW.BHEL.COM . IV.IN CASE DISPUTE IS NOT SETTLED IN CONCILIATION PROCEEDINGS, THE SAME SHALL BE REFERRED TO ARBITRATION AS PER CORPORATE GUIDELINES OF THE BHEL AND THE ARBITRATION PROCEEDING SHALL BE CONDUCTED AS PER PROVISIONS OF THE ARBITRATION AND CONCILIATION ACT, 1996 READ WITH CORPORATE GUIDELINE AS AMENDED FROM TIME TO TIME. V.THE VENDOR SHALL CONTINUE TO PERFORM THE CONTRACT, PENDING SETTLEMENT OF DISPUTE(S). B.JURISDICTION: ALL DISPUTES OR DIFFERENCES ARISING OUT OF OR IN CONNECTIONS WITH THE CONTRACT SHALL BE SUBJECT TO THE EXCLUSIVE JURISDICTION OF THE COURT AT VARANASI (U.P.) ONLY.	
30	SPECIAL NOTE FOR BIDDERS: THE QUOTATION SHOULD BE FROM PRINCIPAL / ORIGINAL EQUIPMENT MANUFACTURER ONLY. THE OFFER OF THOSE OEM, AUTHORISING THEIR TRADER / DEALER / DISTRIBUTOR TO QUOTE AND TAKE ORDER IS LIABLE FOR DISQUALIFICATION. SINCE BHEL PREFER TO DEAL DIRECTLY WITH OEM AND NOT THROUGH DEALER / TRADER / DISTRIBUTOR OF OEM, THEREFORE, OEM MUST DIRECTLY QUOTE, TAKE ORDER AND DELIVER THE MATERIAL UNDER THEIR GUARANTEE / WARRANTEE.	
31	I. FOLLOWING DOCUMENTS SHOULD BE ENCLOSED AND ADDRESSED TO DGM (FINANCE) AND SAME SHALL BE DISPATCHED TO MM DEPTT. , BHEL, HERP, TARNA, SHIVPUR, VARANASI-221003 FOR PAYMENT PURPOSE: (a) 05 (FIVE) COPIES OF GST INVOICES (b) COPY OF GR/RR. (c) TEST CERTIFICATE AND GUARANTEE/WARRANTEE CERTIFICATE AND PDI REPORT, IF APPLICABLE. (ONE COPY). II. FURTHER TO ABOVE, 02 (TWO) COMPLETE SETS OF DOCUMENTS (COPIES OF ABOVE MENTIONED DOCUMENTS AT SL. NO. I (UNDER THIS CLAUSE) SHALL BE SENT FOR PURCHASE AND QUALITY DEPARTMENTS. ORIGINAL COPIES OF TC, GC, PDI REPORTS & OTHER QUALITY PAPERS SHALL BE ATTACHED IN THE SET OF DOCUMENTS FOR QUALITY DEPARTMENTS. III. BHEL SHALL SEEK CLARIFICATION(S) (IF ANY) RELATED TO PAYMENT DOCUMENTS IN ONE GO. THE VENDOR SHOULD PROVIDE ALL SUCH CLARIFICATION(S) IMMEDIATELY.ANY DELAY IN PROCESSING OF PAYMENT, DUE TO NON RECEIPT OF CLARIFICATION(S) SOUGHT BY BHEL, SHALL BE ATTRIBUTABLE COMPLETELY TO VENDOR.	
32	GUIDELINES FOR SUSPENSION OF BUSINESS DEALINGS WITH SUPPLIERS/ CONTRACTORS: THE REVISED GUIDELINES FOR SUSPENSION OF BUSSINESS DEALINGS ARE AVAILABLE ON BHEL WEBSITE AT “www.bhel.com” on “SUPPLIER REGISTRATION PAGE”. RESPECTIVE BIDDERS / SUPPLIERS MAY REFER THIS BEFORE QUOTING AS PER THEIR REQUIREMENT. ACTION AGAINST THE DEFAULTED SUPPLIERS/ CONTRACTORS' SHALL BE TAKEN AS PER THESE GUIDELINES ONLY.	
33	IF BHEL ISSUES FREE ISSUE MATERIALS TO THE SUPPLIER, IT MUST BE RETURNED WITHIN THE TIME LIMIT AS PRESCRIBED IN GST LAW (PRESENTLY 01 (ONE) YEAR FROM THE DATE OF FREE ISSUE DATE) TO COMPLY THE GST RULES. IF ANY VENDOR DOES NOT RETURN THE BHEL FREE ISSUE MATERIALS AS MENTIONED ABOVE, THE FINANCIAL IMPLICATION ON ACCOUNT OF THIS, IF ANY, SHALL BE RECOVERED FROM THE PARTY BILLS.	
34	TRANSPORTATION CHARGES FOR SENDING BHEL FREE ISSUE MATERIALS TO THE PARTY WORKS WILL BE BORNE BY BHEL ONLY.	
35	VENDOR MUST FOLLOW THE SEQUENTIAL DELIVERY SCHEDULE i.e. ITEMS TO BE SUPPLIED IN SUCH A MANNER THAT THE PURCHASE ORDER HAVING OLDER DELIVERY SCHEDULE SHOULD BE SUPPLIED EARLIER AND PURCHASE ORDER HAVING LATTER DELIVERY SCHEDULE TO BE SUPPLIED LATTER. IF ANY VENDOR DOES NOT FOLLOW THE SEQUENTIAL DELIVERY SCHEDULE ESPECIALLY FOR SAME ITEM, BHEL MAY ACCOUNT FOR THE ITEM IN SEQUENTIAL MANNER OR MAY RECOVER THE FINANCIAL IMPLICATION.	
36	VENDOR MUST VISIT OUR WEBSITE https://herp.bhel.com REGULARLY FOR ENQUIRY/PO/CLARIFICATIONS/FOR ANY LATEST UPDATES.	
37	ALL ABOVE ACCEPTED TERMS & CONDITIONS SHALL BE PART OF PURCHASE ORDER WITH OR WITHOUT MENTIONING IN THE PO/CONTRACT BASED ON YOUR ACCEPTANCE AND OFFER SUBMITTED.	
38	THE BIDDER ALONG WITH ITS ASSOCIATE/COLLABORATORS/SUB-CONTRACTORS/SUB-VENDORS/CONSULTANTS/SERVICE PROVIDERS SHALL STRICTLY ADHERE TO BHEL FRAUD PREVENTION POLICY DISPLAYED ON THE BHEL WEBSITE http://www.bhel.com and https://herp.bhel.com AND SHALL IMMEDIATELY BRING TO THE NOTICE OF BHEL MANAGEMENT ABOUT ANY FRAUD OR SUSPECTED FRAUD AS SOON AS IT COMES TO THEIR NOTICE.	
39	IMPORTANT INSTRUCTION: I.VENDORS ARE REQUESTED TO QUOTE THEIR RATE WITH DESCRIPTION MENTIONED IN THE ENQUIRY CONSIDERING ALL TECHNICAL TERMS & CONDITIONS OF THE ENQUIRY. ALSO RATES QUOTED SHOULD BE EXACTLY AS PER SL. NO. OF HARD COPY OF THE ENQUIRY (IF ENQUIRY HAS BEEN FLOATED THROUGH CONVENTIONAL MODE) OR AS PER SL. NO. APPEARING IN THE e-Procurement PORTAL (IF ENQUIRY HAS BEEN FLOATED THROUGH e-Procurement) ONLY. IT MUST BE FOLLOWED UP TO AVOID CONFUSION AT LATER STAGES. ALSO RATES TO BE SUBMITTED BOTH IN NUMERICS AS WELL AS IN WORD. IN CASE OF DISCREPENCY, RATES SUBMITTED IN WORDS SHALL BE CONSIDERED FOR FURTHER PROCESSING.	



Bharat Heavy Electricals Limited

Heavy Equipment Repair Plant (HERP)

Tarna, Shivpur, Varanasi - 221003

	<p>II. DOCUMENTS SUBMITTED WITH THE OFFER SHOULD BE SIGNED AND STAMPED IN EACH PAGE BY AUTHORIZED REPRESENTATIVE OF THE BIDDER.</p> <p>III. IN CASE OF PDI, VENDOR SHALL RAISE ONLINE INSPECTION CALL IN ONLINE INSPECTION PORTAL/INTIMATE BHEL IN WRITING (WHERE INSPECTION IS IN BHEL HERP SCOPE) AT LEAST 01 WEEK IN ADVANCE OR AS MUTUALLY AGREED PERIOD ABOUT THE DATE AND PLACE AT WHICH GOODS WILL BE READY FOR INSPECTION.</p> <p>IV. PURCHASER OR HIS AUTHORIZED REPRESENTATIVE SHALL BE ENTITLED TO CARRY OUT SURVEILLANCE INSPECTION OF MATERIAL AND WORKMANSHIP AT SELLER'S PREMISES OR AT HIS SUB-CONTRACTOR'S PREMISES AT ALL REASONABLE TIMES DURING EXECUTION OF THE CONTRACT. SUCH INSPECTION, EXAMINATION AND TESTING, IF MADE, SHALL NOT ABSOLVE THE SELLER FROM HIS OBLIGATIONS UNDER THE CONTRACT.</p> <p>V. SUCH PRE-DISPATCH INSPECTION, EXAMINATION AND TESTING, IF MADE, AT VENDOR'S WORKS SHALL NOT ABSOLVE THE SELLER FROM HIS OBLIGATIONS TO MANUFACTURE/MACHINING THE GOODS UNDER THE CONTRACT. IF DEFECTS ARE FOUND AT LATER STAGE, IT IS THE SOLE RESPONSIBILITY OF THE VENDOR TO REPLACE/RECTIFY THE SAME.</p>	
40	<p>IMPORTANT CLAUSE FOR GST: INPUT TAX CREDIT OF GST CAN BE AVAILED BY BHEL ONLY WHEN THE MATERIAL HAS BEEN PHYSICALLY RECEIVED AND GST INVOICE IS IN POSSESSION OF BHEL. THEREFORE, SUPPLIERS SHOULD ENSURE THE FOLLOWING IN RESPECT OF POS ISSUED BY BHEL:</p> <p>I. GST INVOICE SHOULD CONTAIN ADDRESS, GST NO. AND PAN NO. OF BHEL AS WELL AS OF SUPPLIER. APPLICABLE HSN CODE OF THE MATERIAL SHOULD BE INDICATED IN THE GST INVOICE.</p> <p>II. FIVE COPIES OF GST INVOICE AND LORRY RECEIPT MAY BE DESPATCHED ALONGWITH SHIPMENT OF THE GOODS IN ORDER TO AVOID ANY DELAY IN AVAILING INPUT CREDIT BY BHEL.</p> <p>III. DECLARE SUCH INVOICE IN HIS GSTR-1 RETURN FOR THE MONTH OF DESPATCH OF MATERIAL.</p> <p>IV. PAYMENT OF GST TO STATUTORY AUTHORITIES WITHIN PRESCRIBED TIME.</p> <p>IN CASE GST CREDIT IS DELAYED /DENIED TO BHEL DUE TO NON OR DELAYED RECEIPT OF GOODS AND OR TAX INVOICE OR EXPIRY OF TIMELINE PRESCRIBED IN GST LAW FOR AVAILING SUCH ITC OR ANY OTHER REASON NOT ATTRIBUTABLE TO BHEL, GST AMOUNT SHALL BE RECOVERABLE FROM VENDOR ALONG WITH INTEREST /PENALTY LEVIABLE ON BHEL.</p> <p>IN CASE SUPPLIERS DELAYS DECLARING SUCH INVOICE IN HIS RETURN AND GST CREDIT AVAILED BY BHEL IS DENIED OR REVERSED SUBSEQUENTLY AS PER GST LAW, GST AMOUNT PAID BY BHEL TOWARDS SUCH ITC REVERSAL SHALL BE RECOVERABLE FROM SUPPLIER ALONGWITH INTEREST LEVIED/LEVIABLE ON BHEL.</p> <p>IN CASE OF RAISING ANY SUPPLEMENTARY TAX INVOICE (DEBIT/ CREDIT NOTE), THE SUPPLIER SHALL ISSUE THE SAME CONTAINING ALL THE DETAILS AS REFERRED TO IN SECTION 34 READ WITH SECTION 31 OF GST ACT & RULES REFERRED THERE UNDER .</p>	
41	<p>STATUTORY VARIATION CLAUSE : 1. ANY INCREASE IN THE RATE OF GST SHALL BE PAYABLE ONLY FOR DELIVERIES COMPLETED WITHIN THE SCHEDULED DELIVERY PERIOD, IN OTHER WORDS INCREASE IN THE RATE OF GST SHALL NOT BE PAYABLE FOR VALUE OF CONSIGNMENT DELIVERED AFTER THE SCHEDULED PURCHASE ORDER DELIVERY PERIOD. 2. NEW TAXES AND DUTIES , IF IMPOSED SUBSEQUENT TO DUE DATE OF OFFER SUBMISSION, BY STATUTORY AUTHORITY DURING CONTRACT PERIOD (INCLUDING EXTENSION IF THE SAME IS NOT ATTRIBUTABLE TO BIDDER) SHALL BE REIMBURSED BY BHEL ON PRODUCTION OF RELEVANT SUPPORTING DOCUMENTS TO THE SATISFACTION OF BHEL . HOWEVER, BIDDER SHALL TAKE PRIOR APPROVAL OF BHEL BEFORE DEPOSITING NEW TAXES AND DUTIES.</p>	
42	<p>PURCHASE PREFERENCE FOR INDIAN VENDORS: FOR THIS PROCUREMENT, THE LOCAL CONTENT TO CATEGORIZE A SUPPLIER AS A CLASS I LOCAL SUPPLIER / CLASS II LOCAL SUPPLIER /NON LOCAL – SUPPLIER AND PURCHASE PREFERENCE TO CLASS I LOCAL SUPPLIER, IS AS DEFINED IN PUBLIC PROCUREMENT (PREFERENCE TO MAKE IN INDIA), ORDER 2017 DATED 04.06.2020 ISSUED BY DPIIT. IN CASE OF SUBSEQUENT ORDERS ISSUED BY THE NODAL MINISTRY, CHANGING THE DEFINITION OF LOCAL CONTENT FOR THE ITEMS OF THE NIT, THE SAME SHALL BE APPLICABLE EVEN IF ISSUED AFTER ISSUE OF THIS NIT, BUT BEFORE OPENING OF PART –II BIDS AGAINST THIS NIT.</p> <p>MODEL CLAUSE FOR TENDER.</p> <p>I. ANY BIDDER FROM A COUNTRY WHICH SHARES A LAND BORDER WITH INDIA WILL BE ELIGIBLE TO BID IN THIS TENDER ONLY IF THE BIDDER IS REGISTERED WITH THE COMPETENT AUTHORITY.</p> <p>II. "BIDDER" (INCLUDING THE TERM 'TENDERER', 'CONSULTANT' OR 'SERVICE PROVIDER' IN CERTAIN CONTEXTS) MEANS ANY PERSON OR FIRM OR COMPANY, INCLUDING ANY MEMBER OF A CONSORTIUM OR JOINT VENTURE (THAT IS AN ASSOCIATION OF SEVERAL PERSONS, OR FIRMS OR COMPANIES), EVERY ARTIFICIAL JURIDICAL PERSON NOT FALLING IN ANY OF THE DESCRIPTIONS OF BIDDERS STATED HEREINBEFORE, INCLUDING ANY AGENCY BRANCH OR OFFICE CONTROLLED BY SUCH PERSON, PARTICIPATING IN A PROCUREMENT PROCESS.</p> <p>III. "BIDDER FROM A COUNTRY WHICH SHARES A LAND BORDER WITH INDIA" FOR THE PURPOSE OF THIS ORDER MEANS: -</p> <ol style="list-style-type: none">AN ENTITY INCORPORATED, ESTABLISHED OR REGISTERED IN SUCH A COUNTRY; ORA SUBSIDIARY OF AN ENTITY INCORPORATED, ESTABLISHED OR REGISTERED IN SUCH A COUNTRY; ORAN ENTITY SUBSTANTIALLY CONTROLLED THROUGH ENTITIES INCORPORATED, ESTABLISHED OR REGISTERED IN SUCH A COUNTRY; ORAN ENTITY WHOSE BENEFICIAL OWNER IS SITUATED IN SUCH A COUNTRY; ORAN INDIAN (OR OTHER) AGENT OF SUCH AN ENTITY; ORA NATURAL PERSON WHO IS A CITIZEN OF SUCH A COUNTRY; ORA CONSORTIUM OR JOINT VENTURE WHERE ANY MEMBER OF THE CONSORTIUM OR JOINT VENTURE FALLS UNDER ANY OF THE ABOVE <p>IV. THE BENEFICIAL OWNER FOR THE PURPOSE OF (III) ABOVE WILL BE AS UNDER:</p> <ol style="list-style-type: none">IN CASE OF A COMPANY OR LIMITED LIABILITY PARTNERSHIP, THE BENEFICIAL OWNER IS THE NATURAL PERSON (S) WHO, WHETHER ACTING ALONE OR TOGETHER, OR THROUGH ONE OR MORE JURIDICAL PERSON, HAS A CONTROLLING OWNERSHIP INTEREST OR WHO EXERCISES CONTROL THROUGH OTHER MEANS. <p>EXPLANATION –</p>	



Bharat Heavy Electricals Limited

Heavy Equipment Repair Plant (HERP)

Tarna, Shivpur, Varanasi - 221003

	<p>a. "CONTROLLING OWNERSHIP INTEREST" MEANS OWNERSHIP OF OR ENTITLEMENT TO MORE THAN TWENTY-FIVE PER CENT. OF SHARES OR CAPITAL OR PROFITS OF THE COMPANY</p> <p>b. "CONTROL" SHALL INCLUDE THE RIGHT TO APPOINT MAJORITY OF THE DIRECTORS OR TO CONTROL THE MANAGEMENT OR POLICY DECISIONS INCLUDING BY VIRTUE OF THEIR SHAREHOLDING OR MANAGEMENT RIGHTS OR SHAREHOLDER'S AGREEMENTS OF VOTING AGREEMENTS;</p> <p>2. IN CASE OF A PARTNERSHIP FIRM, THE BENEFICIAL OWNER IS THE NATURAL PERSON (S) WHO, WHETHER ACTING ALONE OR TOGETHER, OR THROUGH ONE OR MORE JURIDICAL OF CAPITAL OR PROFITS OF THE PARTNERSHIP;</p> <p>3. IN CASE OF AN UNINCORPORATED ASSOCIATION OR BODY OF INDIVIDUALS, THE BENEFICIAL OWNER IS THE NATURAL PERSON (S), WHO, WHETHER ACTING ALONE OR TOGETHER, OR THROUGH ONE OR MORE JURIDICAL PERSON, HAS OWNERSHIP OF OR ENTITLEMENT TO MORE THAN FIFTEEN PERCENT OF THE PROPERTY OF CAPITAL OF PROFITS OF SUCH ASSOCIATION OR BODY OF INDIVIDUALS;</p> <p>4. WHERE NO NATURAL PERSON IS IDENTIFIED UNDER (1) OR (2) OR (3) ABOVE, THE BENEFICIAL OWNER IS THE RELEVANT NATURAL PERSON WHO HOLDS THE POSITION OF SENIOR MANAGING OFFICIAL;</p> <p>5. IN CASE OF TRUST, THE IDENTIFICATION OF BENEFICIAL OWNER (S) SHALL INCLUDE IDENTIFICATION OF THE AUTHOR OF THE TRUST, THE TRUSTEE, THE BENEFICIARIES WITH FIFTEEN PERCENT OR MORE INTEREST IN THE TRUST AND ANY OTHER NATURAL PERSON EXERCISING ULTIMATE EFFECTIVE CONTROL OVER THE TRUST THROUGH A CHAIN OF CONTROL OR OWNERSHIP.</p> <p>V. AN AGENT IS A PERSON EMPLOYED TO DO ANY ACT FOR ANOTHER, OR TO REPRESENT ANOTHER IN DEALINGS WITH THIRD PERSON. CERTIFICATE:</p> <p>IN ORDER TO AVAIL THE BENEFITS, VENDORS TO SUBMIT (ALONG WITH OFFER) THE SELF-CERTIFICATION THAT THE ITEM OFFERED MEETS THE CONTENT REQUIREMENT FOR CLASS-I/ CLASS-II LOCAL SUPPLIER AS THE CASE MAY BE, INDICATING THE PERCENTAGE OF LOCAL CONTENT. AND SHALL GIVE DETAILS OF LOCATION AT WHICH THE LOCAL VALUE ADDITION IS MADE (refer attached Make in India (Model Certificate no I)).</p>	
43	<p>FORCE MAJEURE : NOTWITHSTANDING ANYTHING CONTAINED IN THE CONTRACT, NEITHER THE VENDOR NOR THE BHEL SHALL BE HELD RESPONSIBLE FOR TOTAL OR PARTIAL NON-EXECUTION OF ANY OF THE CONTRACTUAL OBLIGATIONS, SHOULD THE OBLIGATION BECOME UNREASONABLY ONEROUS OR IMPOSSIBLE DUE TO OCCURRENCE OF A 'FORCE MAJEURE' WHICH DIRECTLY AFFECTS THE OBLIGATIONS TO BE PERFORMED BY THE BHEL OR THE VENDOR ; SUCH EVENTS INCLUDE WAR, MILITARY OPERATIONS OF ANY NATURE, BLOCKAGES, REVOLUTIONS, INSURRECTIONS, RIOTS, CIVIL COMMOTIONS, INSURGENCY, SABOTAGE, ACTS OF PUBLIC ENEMY, FIRES, EXPLOSION, EPIDEMICS, QUARANTINE RESTRICTIONS, FLOODS, EARTHQUAKE, OR ACTS OF GOD, RESTRICTIONS BY GOVT. AUTHORITIES; OVER WHICH THE VENDOR OR THE BHEL HAS NO CONTROL. THE PARTY CLAIMING TO BE AFFECTED BY FORCE MAJEURE SHALL NOTIFY THE OTHER PARTY IN WRITING WITHOUT DELAY, WITHIN TWO WEEKS ON THE INTERVENTION AND ON THE CESSATION OF SUCH CIRCUMSTANCE. EXTENSION OF TIME SOUGHT BY THE VENDOR ALONG WITH SUPPORTING EVIDENCE AND SO GRANTED BY THE BHEL FOR THE SUPPLY/ WORK AFFECTED, IF ANY, SHALL NOT BE CONSTRUED AS WAIVER IN RESPECT OF REMAINING DELIVERIES. RESCHEDULING OF DELIVERIES ON ACCOUNT OF FORCE MAJEURE CONDITIONS, IF SO AGREED BY THE BHEL, WILL NOT ENTAIL THE VENDOR TO CLAIM ANY INCREASE IN THE PRICE ON WHATSOEVER ACCOUNT. NOTWITHSTANDING ABOVE PROVISIONS, BHEL SHALL RESERVE THE RIGHT TO CANCEL THE ORDER/ CONTRACT, WHOLLY OR PARTLY, IN ORDER TO MEET THE OVERALL PROJECT SCHEDULE AND MAKE ALTERNATIVE ARRANGEMENTS. IF DEEMED NECESSARY, BHEL MAY TAKEOVER PARTLY PROCESSED MATERIAL AT A MUTUALLY AGREED PRICE.</p>	
44	<p>FRAUD PREVENTION POLICY : THE BIDDER ALONG WITH ITS ASSOCIATE/ COLLABORATORS/ SUB-CONTRACTORS/ SUB-VENDORS/ CONSULTANTS/ SERVICE PROVIDERS SHALL STRICTLY ADHERE TO BHEL FRAUD PREVENTION POLICY DISPLAYED ON BHEL WEBSITE WWW.BHEL.COM AND SHALL IMMEDIATELY BRING TO THE NOTICE OF BHEL MANAGEMENT ABOUT ANY FRAUD OR SUSPECTED FRAUD AS SOON AS IT COMES TO THEIR NOTICE.</p>	
45	<p>SHORT SHIPMENTS/ WARRANTY/GUARANTEE REPLACEMENTS: IN CASE OF ANY SHORT SHIPMENT DURING INITIAL SUPPLY WHICH IS SUBSEQUENTLY DISPATCHED BY THE VENDOR OR ANY GUARANTEE / WARRANTY REPLACEMENTS SHALL BE DISPATCHED ON "FOR-BHEL STORES/DESIGNATED DESTINATION" BASIS FOR INDIGENOUS ITEMS. TAXES, IF ANY PAID BY INDIGENOUS VENDOR FOR GUARANTEE /WARRANTEE REPLACEMENT, REPAIR ACTIVITY EXCLUDING SHORT SUPPLY SHALL BE TO VENDOR'S ACCOUNT ONLY. THE VENDOR HAS TO RAISE A CREDIT NOTE FOR SHORT SUPPLIED QUANTITY AS PER GST PROVISIONS</p>	
46	<p>REJECTION/REPLACEMENT: THE SELLER SHALL ARRANGE REPLACEMENT / REPAIR UNDER ITS OBLIGATION UNDER THE CONTRACT WITHIN ONE MONTH FROM THE DATE OF INTIMATION OR MUTUALLY AGREED PERIOD. THE REJECTED GOODS SHALL BE TAKEN AWAY BY THE SELLER AND REPLACED ON FOR-BHEL STORES/DESIGNATED DESTINATION BASIS WITHIN SUCH PERIOD. IN THE EVENT OF THE SELLER'S FAILURE TO COMPLY, PURCHASER MAY TAKE APPROPRIATE ACTION INCLUDING DISPOSAL OF REJECTIONS, AT THE COST AND RISK OF THE SELLER. VENDOR HAS TO RAISE A CREDIT NOTE FOR REJECTED QUANTITY AS PER GST PROVISIONS.</p>	
47	<p>E WAY BILL: THE SUPPLIER HAS TO ARRANGE FOR E WAY BILL AS APPLICABLE FOR ANY MOVEMENT OF GOODS ALONG WITH OTHER PRESCRIBED DOCUMENTS AS PER GST LAW. THE SUPPLIER HAS ALSO TO COMPLY WITH ANY AMENDMENT AS PRESCRIBED FROM TIME TO TIME UNDER E WAY BILL RULE. ANY FINANCIAL IMPLICATION ARISES ON BHEL DUE TO NONCOMPLIANCE OF E WAY BILL RULE WILL BE PASSED ON TO THE SUPPLIER.</p>	
48	<p>THE STARTUPS AS DEFINED IN THE GAZETTE OF INDIA NOTIFICATION NO. : G.S.R. 127 (E) DATED 19/02/2019 WILL BE EXEMPTED FROM FULFILLING THE CRITERIA, IF MENTIONED, IN THE PQR (PRE-QUALIFYING REQUIREMENT) REGARDING PRIOR TURNOVER AND PRIOR EXPERIENCE. HOWEVER, THERE MAY BE CIRCUMSTANCES (LIKE PROCUREMENTS OF ITEMS RELATED TO PUBLIC SAFETY, HEALTH, CRITICAL SECURITY OPERATIONS AND EQUIPMENTS ETC.) WHERE BHEL MAY PREFER THE VENDORS TO HAVE PRIOR EXPERIENCE RATHER THAN GIVING ORDER TO NEW ENTITIES. FOR SUCH PROCUREMENTS, BHEL MAY NOT RELAX THE CRITERIA OF PRIOR EXPERIENCE/TURNOVER FOR THE STARTUPS.</p>	
49	<p>THE VENDORS SHALL ENSURE THAT THEIR BANK DETAILS ARE UPDATED WITH US FOR TIMELY PAYMENT THROUGH EFT (ELECTRONICS FUND TRANSFER).</p>	
50	<p>THE BIDDER DECLARES THAT THEY WILL NOT ENTER INTO ANY ILLEGAL OR UNDISCLOSED AGREEMENT OR UNDERSTANDING, WHETHER FORMAL OR INFORMAL WITH OTHER BIDDER (S). THIS APPLIES IN PARTICULAR TO PRICES, SPECIFICATIONS, CERTIFICATIONS, SUBSIDIARY CONTRACTS, SUBMISSION OR NON- SUBMISSION OF BIDS OR ANY OTHER ACTIONS TO RESTRICT COMPETITIVENESS OR TO INTRODUCE CARTELIZATION IN THE BIDDING PROCESS. IN CASE, THE BIDDER IS FOUND HAVING INDULGED IN</p>	



Bharat Heavy Electricals Limited
Heavy Equipment Repair Plant (HERP)

Tarna, Shivpur, Varanasi - 221003

	ABOVE ACTIVITIES, SUITABLE ACTION SHALL BE TAKEN BY BHEL AS PER EXTANT POLICIES / GUIDELINES.	
51	THE BIDDER SHALL REGISTER THEMSELVES ON GEM PORTAL AND SHALL QUOTE THEIR GEM SELLER ID IN THEIR OFFER. GEM SELLER ID IS MANDATORY FOR PLACEMNET OF PURCHASE ORDERS EXCEEDING Rs. 25 LAKHS.	





Bharat Heavy Electricals Limited
Heavy Equipment Repair Plant (HERP)

Tarna, Shivpur, Varanasi - 221003

Annexure-VIII

DETAILS OF COMPOSITION OF PART-I (TECHNO-COMMERCIAL BID), PART-II (PRICE BID) & PART-III (Supplier REGISTRATION FORM)

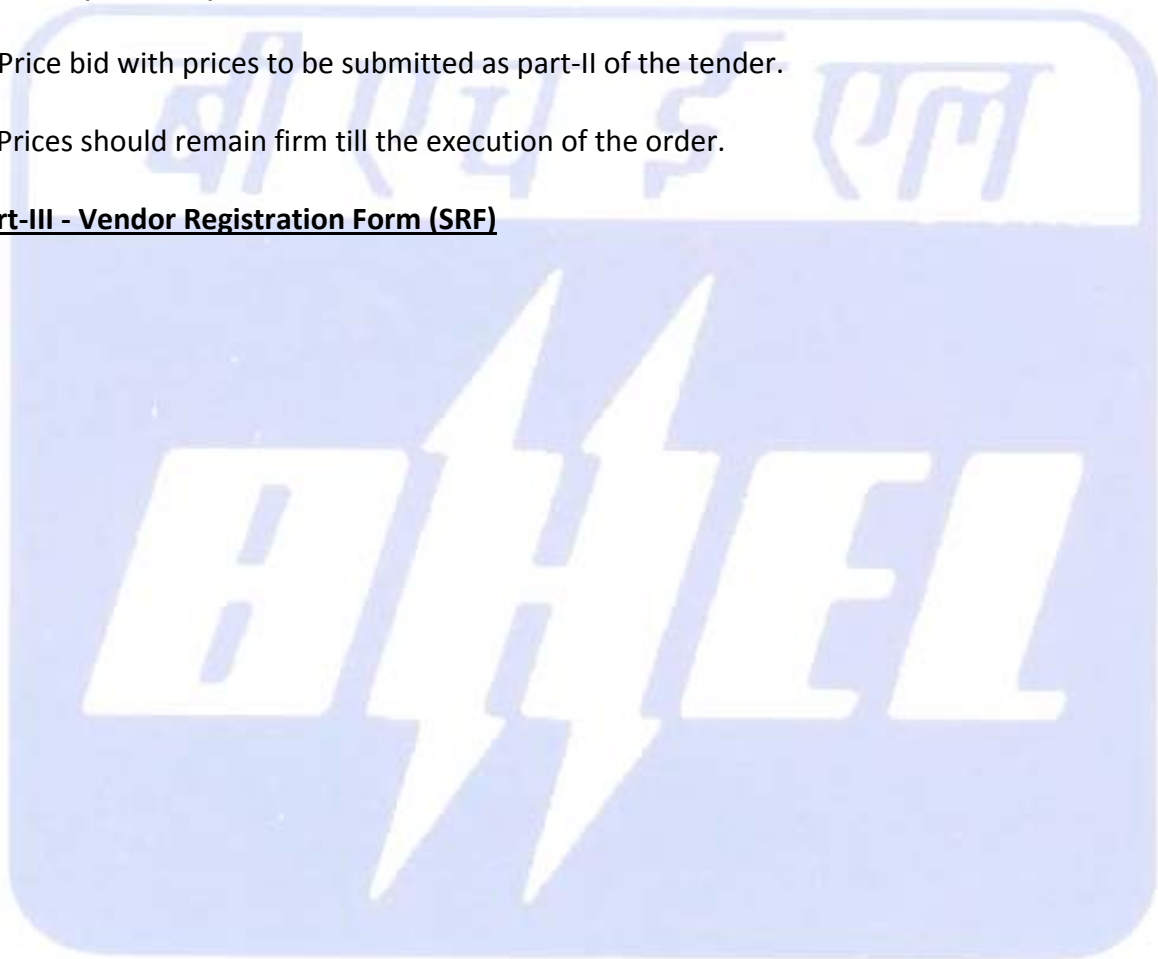
PART-I (TECHNO-COMMERCIAL BID) shall comprise of following documents:

1. Documents in line to PQR.
2. Filled, signed and stamped copy of the tender documents.

PART –II (Price Bid):

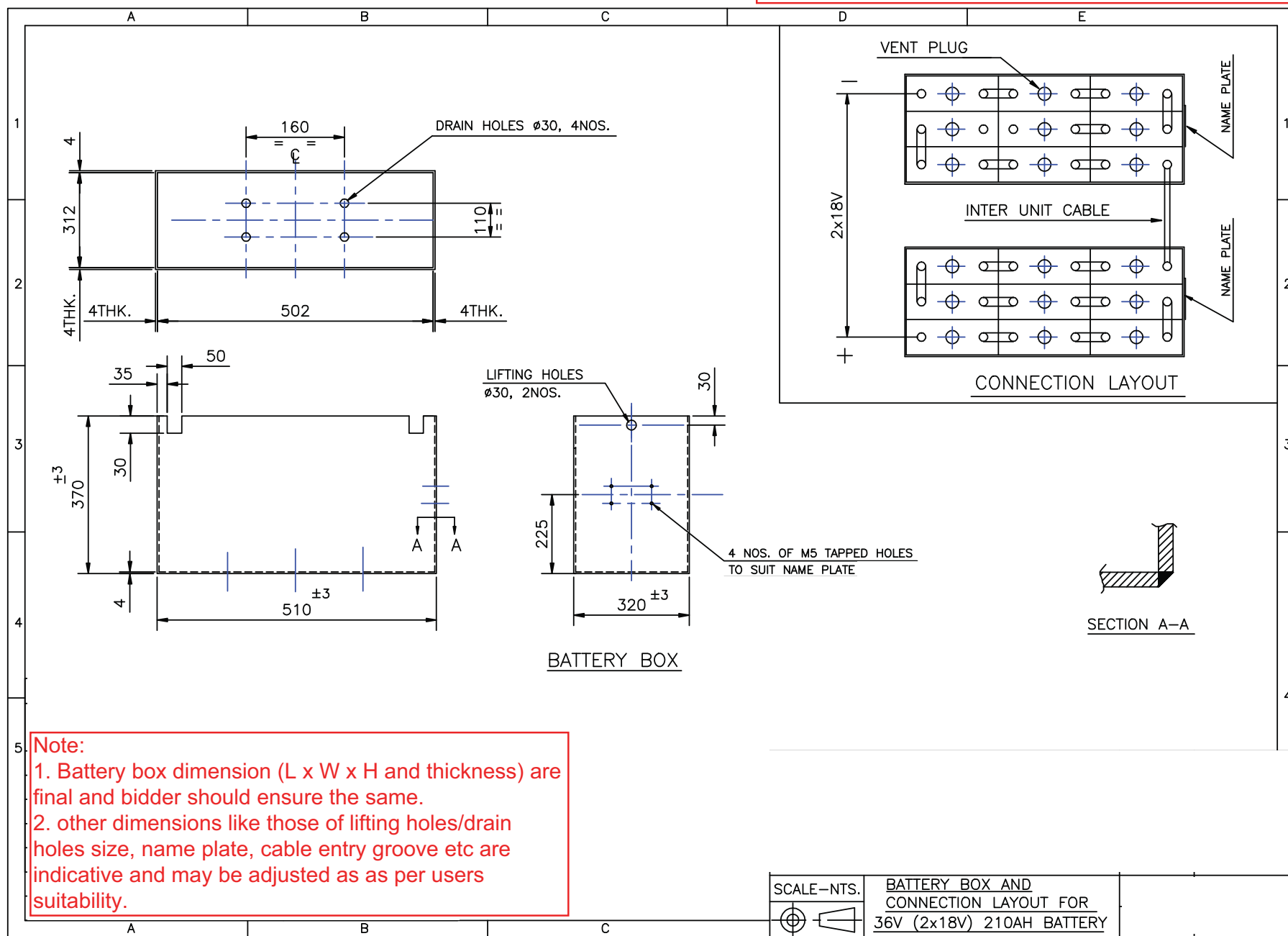
- A. Price bid with prices to be submitted as part-II of the tender.
- B. Prices should remain firm till the execution of the order.

Part-III - Vendor Registration Form (SRF)



ANNEXURE-B

GENERAL ARRANGEMENT





**BHARAT HEAVY ELECTRICALS LIMITED
HEAVY EQUIPMENT REPAIR PLANT
TARNA, SHIVPUR, VARANASI-221003**

Annexure-A

**TECHNICAL SPECIFICATION FOR SUPPLYING NEW 36 V (2 x 18 V) LEAD ACID TRACTION
BATTERY AGAINST BUYBACK OF EXISTING DEFECTIVE BATTERY**

S.N.	Criteria	Requirement	Bidder's Confirmation
1	Item description	Pre-charged 36 V (2V x 18), Capacity: 210 Ah @ 5 hours, Traction Battery for industrial transfer trolley	
2	Cell type	Lead Acid (for traction purpose)	
3	Requirements	One set of above battery shall contain two container units each having 9 cells	
4	Number of containers	2	
5	Each Container dimension	Length: 510 mm x Width: 320 mm x Height: 370 mm (to accommodate each 9-cell group)	
6	Socket	NYLON	
7	Cable size	35 sq mm copper cable	
8	Positive Cable length	1500 mm	
9	Negative Cable length	1500 mm	
10	Inter unit cable length	1500 mm	
11	Battery container (box) material	M.S.	
12	Vent plug	Flip top type	
13	Application	Suitable for battery operated industrial transfer trolley, capacity: 5 Ton	
14	General arrangement	As per attached drawing (Annexure-B)	
15	Test Report	From Central Govt::NABL::ILAC accredited lab to prove conformity to specification	

DETAIL OF EXISTING DEFECTIVE BATTERY TO BE BOUGHT BACK

- EXIDE MAKE IRON CLAD TRACTION BATTERY, Model: 2 x 9 IMF-11, 36 Volt, Capacity: 200 Ah

Guidelines for Indian Agents of Foreign Suppliers

- 1.0 There shall be compulsory registration of agents for all Global (Open) Tender and Limited Tender. An agent who is not registered with BHEL shall apply for registration in the registration form in line with SEARP.
- 1.1 Registered agents will file an authenticated Photostat copy duly attested by a Notary Public/Original certificate of the Principal confirming the agency agreement and giving the status being enjoyed by the agent and the commission/ remuneration/ salary/ retainership being paid by the principal to the agent before the placement of order by BHEL.
- 1.2 Wherever the Indian representatives have communicated on behalf of their principals and the foreign parties have stated that they are not paying any commission to the Indian agents, and the Indian representative is working on the basis of salary or as retainer, a written declaration to this effect should be submitted by the party (i.e. Principal) before finalizing the order.
- 2.0 **Disclosure of particulars of agents/ representatives in India, if any.**
- 2.1 Tenderers of Foreign nationality shall furnish the following details in their offers:
 - 2.1.1 The Bidder(s)/ Contractor(s) of foreign origin shall disclose the name and address of the agents/ representatives in India if any and the extent of authorization and authority given to commit the Principals. In case the agent/ representative be a foreign Company, it shall be confirmed whether it is existing Company and details of the same shall be furnished.
 - 2.1.2 The amount of commission/ remuneration included in the quoted price(s) for such agents/ representatives in India.
 - 2.1.3 Confirmation of the Tenderer that the commission/ remuneration, if any, payable to his agents/ representatives in India, may be paid by BHEL in Indian Rupees only.
- 2.2 Tenderers of Indian Nationality shall furnish the following details in their offers:
 - 2.2.1 The Bidder(s)/ Contractor(s) of Indian Nationality shall furnish the name and address of the foreign principals, if any, indicating their nationality as well as their status, i.e. whether manufacturer or agents of manufacturer holding the Letter of Authority of the Principal specifically authorizing the agent to make an offer in India in response to tender either directly or through the agents/ representatives.
 - 2.2.2 The amount of commission/ remuneration included in the price (s) quoted by the Tenderer for himself.
 - 2.2.3 Confirmation of the foreign principals of the Tenderer that the commission/ remuneration, if any, reserved for the Tenderer in the quoted price(s), may be paid by BHEL in India in equivalent Indian Rupees on satisfactory completion of the Project or supplies of Stores and Spares in case of operation items.
- 2.3 In either case, in the event of contract materializing, the terms of payment will provide for payment of the commission/ remuneration, if any payable to the agents/ representatives in India in Indian Rupees on expiry of 90 days after the discharge of the obligations under the contract.
- 2.4 Failure to furnish correct and detailed information as called for in paragraph 2.0 above will render the concerned tender liable to rejection or in the event of a contract materializing, the same liable to termination by BHEL. Besides this there would be a penalty of banning business dealings with BHEL or damage or payment of a named sum.

This format is applicable only to Indian Suppliers/ Agents supplying indigenous portion of Foreign Purchases.

* In all other cases, extant guidelines of SEARP, 2016 are to be followed.

SEARP (SRF) Clause No	Detail
	Name & address of the firm
1.0	Products/ Systems / Services being considered for
2.0	General Information
2.2	Name of Chief Executive
2.3	Details of authorized signatory
3.0	Ownership Information
3.1	Type of firm
3.2	Nature of Business <ul style="list-style-type: none"> • Attach authorization letter and agency agreement from Principal (from whom capital equipment is procured) • Attach copy of declaration from Foreign Principal for total guarantee/ warranty of indigenous supplies
3.3	Year of establishment
3.4	Year of commencement of business
4.0	Registration particulars
4.1	Permanent Account No.
4.2 / 4.3	Sales Tax / TIN no
4.6	Service tax no. (in case of E&C)
5.0	Organisational strength
6.0	Other particulars
6.1	If the company is already registered with other units
6.2	Directors/ Partners, if related to any BHEL Employee
6.9	If any Ex BHEL Personnel employed by the Company
6.12	Details of pending legal issues with BHEL
6.13	Bank Account information
9.0	Financial information
9.6	Sales/ Turnover details of last 3 years (or from the date of incorporation whichever is less)

On Bidder's office letter pad

Make in India (Model Certificate) Annexure-I

Self-Declaration

Enquiry No.	
Enquiry Date	

In line with Government public procurement order Number P-45021/2/2017-B.E-II dated 15.06.2017, and further modified order dt. 28.05.2018, 29.05-2019 and 04.06.2020

I / We hereby declare that I / We are a "Local Supplier" meeting the requirement of minimum local content (.....%) defined in the above government notification for the goods against above mentioned enquiry Number.

Details of location at which local value addition will be made is as follows:

Door No.	
Street / Address 1	
Street / Address 2	
District	
State	
Country	
PIN Code	

We also understand that the false declarations will be considered as breach of Integrity and liable for action.

For Company Name:

Seal:

Signature:

Date:

Place:

(Please fill all the yellow color field)

Applicants need to comply with the requirements of the registration process. The information/ documents furnished will be treated in strict confidence.

Instructions for filling the Registration Form

- Supplier registration is only through online portal at <https://supplier.bhel.in>.
- All columns in the Registration Form are to be duly filled up. Indicate, '**NIL**'/ '**Not Applicable**', wherever details are not available or not relevant respectively.
- All sheets of the Registration Form are to be signed & stamped/ digitally signed by the authorized signatory.
- Expeditious furnishing of any clarification/ information required during registration to be ensured, failure of which may affect the registration process.
- PO copies/ Experience certificates/ Test certificates or any other required document will be sent for verification to the concerned issuing authority. Registration will be liable to be cancelled if any document is found to be fake/ false/ forged on verification.
- Submission of fake/ false/ forged documents will invite action by BHEL as per extant Guidelines for Suspension of Business Dealings and Fraud Prevention Policy (both as available on www.bhel.com).
- Just submission of supplier registration form does not mean automatic registration. Registration shall be done, after due evaluation and will be intimated accordingly.
- Registration of supplier will be done on the basis of the following criteria depending upon the applicability

SNO	Criteria	Max. Marks	Min. Qualifying Marks	Applicable for
1.	Organizational soundness	50	30	Manufacturers*/ EPC Contractors*/ Non-Manufacturers/ Subcontractor
2.	Financial information			
3.	Quality system	25	15	Manufacturers/ Subcontractor
4.	Technical competence	25	15	
	Total	100	60	

* Minimum qualifying marks for financial information shall be 10 within the ambit of 30 marks put together for Organisational soundness & Financial information.

- For a document in language other than Hindi/ English, a self-attested Hindi/ English translated document to be attached
- Class 3, Signing & Encryption Digital Signature has to be obtained.

DECLARATION

(This declaration should be signed by the Proprietor/ Partner/ Director)

I/ Wedeclare and confirm that the information furnished and attachments submitted with the application are true and correct. I/ we are aware that any false information provided herein will result in the rejection of my/ our application for registration. I/ we shall be bound by the acts of the duly authorized signatory, who has signed this application and of any other person, who in the future, may be appointed by us in his place, whether or not an intimation of such changes has been given. I/ we undertake to communicate promptly to BHEL any changes in the conditions or working of the firm.

I/ We.....also give the undertaking that BHEL's drawings & specifications shall not be used in any way detrimental to the interest of BHEL and/ or for supply of any material, product or services directly or indirectly to any other customer.

I/ We.....have read and understood that action can be taken as per extant guidelines for Suspension of Business Dealings with Supplier/ Contractor and Fraud Prevention Policy (both as available on www.bhel.com).

I/ Weagree to participate in e-procurement as and when required by BHEL.

Name:

Position:

Date & Place:

Signature along with Office Seal:

- Scanned (Hard/ digitally) copy of declaration signed by the Proprietor/ Partners/ Director and/ or authorized signatory, who has the authority to do so, is to be uploaded.

PART- A: ORGANISATIONAL SOUNDNESS

1.0 ORGANISATIONAL INFORMATION

1.1 NAME AND CORRESPONDENCE ADDRESS OF THE FIRM/ COMPANY TO BE REGISTERED

1.2 REGISTERED OFFICE ADDRESS

Tel: Landline

Fax

Website

1.3 Address, Contact person & Telephone no for:

- **WORKS 1/ DIVISON 1/ BRANCH 1/ SISTER CONCERN 1:**
- **WORKS 2/ DIVISON 2 / BRANCH 2/ SISTER CONCERN 2:**
- **.....**
- **WORKS N/ DIVISON N/ BRANCH N/ SISTER CONCERN N:**

1.4 PRODUCTS/ SYSTEMS/ SERVICES FOR WHICH REGISTRATION IS APPLIED FOR (ATTACH BROCHURES & CATALOGUES)

SNO	DESCRIPTION	SIZE & RANGE	MANUFACTURING STANDARD (IS/ DIN/ BS/ ASME etc.)	WORKS/ DIVISON (as per cl 1.3)

2.0 GENERAL INFORMATION

2.1 DETAILS OF CHIEF EXECUTIVE:

2.2 DETAILS OF AUTHORISED SIGNATORY ATTACH AUTHORIZATION LETTER)

2.3 DETAILS OF CONTACT PERSON FOR ANY CLARIFICATION (S)

Name

Designation

Aadhar No.

E-Mail

Tel: Landline

Mobile

Fax

2.4 DETAILS OF DIRECTORS IN CASE OF PRIVATE LTD., ONE PERSON COMPANY, PUBLIC LTD. AND PARTNERS IN CASE OF LIMITED LIABILITY PARTNERSHIP/ PARTNERSHIP FIRMS, OFFICE BEARERS IN CASE OF CO-OPERATIVE SOCIETY, TRUSTEES IN CASE OF TRUST, PROPRIETOR IN CASE OF PROPRIETORSHIP FIRM, Karta of HUF:

Name	Gender (Male/ Female)	% Share of Ownership	SC/ ST (Y/ N)	PAN	Aadhar No.	DIN No. (if applicable)

**BHARAT HEAVY ELECTRICALS LIMITED
SUPPLIER REGISTRATION FORM
(INDIAN SUPPLIER)**

Doc. No. AA:SSP:SR:01 Rev:02

Date: 26.09.2016

amdt. 03 dated 12.10.2020

Annexure-C

(Attach organization chart)					
2.5 DIRECTORS / PARTNERS/ PROPRIETOR, IF RELATED TO ANY BHEL EMPLOYEE.		2.6 IF ANY EX-BHEL PERSONNEL IS EMPLOYED/ ENGAGED BY THE COMPANY		2.7 DETAILS OF FAMILY MEMBERS, RELATED FIRMS, GROUP COMPANIES ETC. REGISTERED WITH BHEL	
Name of BHEL Employee		Name of Ex. BHEL Employee		Name of The Firm/ Family Member	
Staff No.& Designation		Staff No.& last Designation held		Nature of Business	
Unit & Department		Place of last posting (Unit & Dept.)		Relationship	
Relationship		Date of leaving Service from BHEL		Whether registered in same material category for which application submitted.	
3.0 OWNERSHIP INFORMATION (DOCUMENTS TO BE FURNISHED)					
3.1 OWNERSHIP		DOCUMENTS TO BE FURNISHED			
Govt. Of India Undertaking		-			
State Govt. Undertaking		-			
Public Limited Company		Memorandum of Association, Articles of Association and Certificate of Incorporation			
Private Limited Company					
One Person Company					
Limited Liability Partnership		Memorandum of Association, Articles of Association, LLP partnership agreement, Certificate of Incorporation (LLPIN)			
Partnership Firm		Registered Partnership Deed duly signed by Registrar of Firms			
Proprietorship		Profession Tax Regn./ Municipal Regn/ PAN of Firm (Proprietor)			
Co-Operative Society		Certificate of Registration of society issued by Registrar of Societies along with its Society Rules and Bye Laws (as per Extant Act)			
Trust		Registered Trust Deed			
Others (please specify)		Attach a copy of the relevant Statutory document			
Any other Statutory document need to carry out business (please specify)					
3.2 Nature of Business					
Tick as applicable: <ul style="list-style-type: none"> • Manufacturer / Engg. Consultant/ EPC Contractor/ System Integrator () • Subcontractor - Machinist / Fabricator with free issue of material () • Dealer*/ Trader*/ Distributor*/ Stockist*/ Channel Partner*/ Indian sales office* or subsidiary of registered Foreign Principal* etc. (attach authorization certificate of Principal) () • Indian Agents* (attach authorization certificate of principal, third party business rating report of foreign principal from Dun & Bradstreet/ Creditreform etc. & deed of agency agreement) () 					
*Non-Manufacturer needs to submit an Authorization Certificate, clearly indicating the validity period as well as rights granted by respective OEMs to them i.e. to negotiate/ quote/ supply/ after sales service etc. in line with scope matrix submitted.					
3.3 Year of Commencement of Business (attach relevant documents)					

BHARAT HEAVY ELECTRICALS LIMITED
SUPPLIER REGISTRATION FORM
(INDIAN SUPPLIER)

Doc. No. AA:SSP:SR:01 Rev:02

Date: 26.09.2016

4.0 REGISTRATION PARTICULARS (COPY OF RELEVANT DOCUMENTS TO BE ATTACHED)		
4.1	Permanent Account No (PAN)	
4.2	Central Sales Tax Regn. Number / TIN Number	
4.3	State Sales Tax/ VAT / TIN Number	
4.4	Excise Control Code number	
4.5	Service Tax Regn. Number	
4.6	Whether Company is Micro/ Small Enterprise (MSE) Category	YES/ NO
4.6.1	Category as per extant MSME Act (Micro/ Small/ Medium)	
Documents to be furnished (any one) & (Tick the appropriate) <ul style="list-style-type: none"> • Udyog Aadhaar Memorandum & Acknowledgement • Valid NSIC Certificate () • Entrepreneurs Memorandum part II (EM II) certificate (deemed validity of 5 years) () {in case of EM II certificate older than 5 Years, EM II certificate along with attested copy of CA certificate* applicable for the relevant financial year (latest audited)} () * Certificate by Chartered Accountant on letter head as per <i>Annexure-H</i>		
4.6.2	MSE Ownership w.r.t. SC/ ST, if applicable, documents to be furnished (Tick the appropriate)	
<ul style="list-style-type: none"> • Proprietor: SC/ ST Certificate () • Partnership Firm: SC/ ST Certificate of partners holding 51% shares & above () • Limited Company: SC/ ST Certificate of Directors/ Owners holding 51% shares & above () 		
5.0 OTHER PARTICULARS (DOCUMENTS TO BE FURNISHED)		
5.1 IF REGISTERED WITH ANY OF BHEL UNITS		
Name of BHEL unit		
Common/ Unit Supplier Identification (ID)Number		
Items for which supplier is registered & their specifications (copy of at least one or more successfully executed purchase orders)		
5.1.1 IF ANY OF YOUR SISTER UNIT/ FIRM IS REGISTERED FOR SIMILAR ITEM/S?		
Name of Sister Unit(s) already registered with BHEL		
Common/ Unit Supplier Identification(ID)Number/ Code		
Item/s for which supplier is registered	Item 1	Item 2
5.2 Whether approved by ASME / NTPC/ NPC/ EIL/ DGS&D/ RAILWAYS/ IBR/ LLOYDS/ ONGC/ PGCIL/ BARC/ RITES/ IOCL/ PDIL/ CPWD/ Any other CPSU for similar items, for which registration is sought?	YES/ NO (Documentary Evidence)	
5.3 Whether Supplier is ISO 9001 Certified	YES/ NO (Certificate)	
5.4 Whether Supplier is ISO 14000 Certified	YES/ NO (Certificate)	
5.5 Whether Supplier is OHSAS 18000 Certified	YES/ NO (Certificate)	
5.6 Experience List: Attach list of present customers with name & address for offered/ similar type & size of item/ equipment for which registration has been sought and with whom applicant has continuous business since last three years. Copies of latest previous two purchase orders executed to be attached. (Attach performance certificates issued by its customers for successful execution of the contracts)		
5.7 Details of Pending Legal/ Arbitrations issues on contractual aspects with customer, if any? (If Yes, kindly furnish details with latest status on a separate sheet)		YES/ NO

BHARAT HEAVY ELECTRICALS LIMITED
SUPPLIER REGISTRATION FORM
(INDIAN SUPPLIER)

Doc. No. AA:SSP:SR:01 Rev:02

Date: 26.09.2016

6.0 MANUFACTURING FACILITIES:

6.1 LIST OF MANUFACTURING FACILITIES/EQUIPMENTS INCLUDING MATERIAL HANDLING FACILITY (RELATED TO THE ITEMS APPLIED FOR REGISTRATION)

Sl. No	Works/ Division (as per cl. 1.)	Description of Machine/Equipment	Quantity	Make & Year of Installation	Remarks

In case of space limitation, please enclose annexure / catalogue with tag

6.2 IF IN-HOUSE MFG FACILITIES NOT AVAILABLE, INFORM SOURCE OF MFG. DETAILS ALONG WITH THEIR FACILITIES (RELATED TO THE ITEMS APPLIED FOR REGISTRATION)

Sl. No	Process Outsourced	Name & address of The Company	Description of Machine / Equipment	Remarks

In case of space limitation enclose annexure/ catalogue with tag

6.3 RATIO OF OUTSOURCED COST TO TOTAL PRODUCTION VALUE: _____.

6.4 POWER BACK UP (Furnish details on separate sheet) YES/ NO

7.0 INSPECTION & TESTING FACILITIES

7.1 LIST OF INSPECTION & TESTING FACILITIES / EQUIPMENT AVAILABLE (RELATED TO THE ITEMS APPLIED FOR REGISTRATION)

Sl. No	Works/ Division(as per cl. 1.2)	Description of Facility/ Equipment & Capacity	Nos.	Make & Year of Manufacturing	Last Date of Calibration(With Traceability)

In case of space limitation enclose annexure/ catalogue with tag

7.2 IF IN-HOUSE TESTING FACILITIES NOT AVAILABLE, INDICATE SOURCE OF TESTING ALONGWITH THEIR FACILITIES (RELATED TO THE ITEMS APPLIED FOR REGISTRATION)

Sl. No	Test	Source of Testing	Description of Facility/ Equipment & Capacity	Approval of Equipment/ Process/ Personnel Qualification

In case of space limitation enclose annexure/ catalogue with tag

Note: In case of outsourcing of major testing such as NDT, Electrical & Mechanical Testing, no marks will be awarded. However, material composition testing by chemical method from recognized laboratory shall not attract negative marking.

BHARAT HEAVY ELECTRICALS LIMITED
SUPPLIER REGISTRATION FORM
(INDIAN SUPPLIER)

Doc. No. AA:SSP:SR:01 Rev:02

Date: 26.09.2016

PART- B: FINANCIAL INFORMATION (to be certified by a Chartered Accountant)

1. Audited copies of annual reports/ complete set of annual accounts for the last four years (or from date of incorporation whichever is less) are to be submitted. 2. If the supplier is new in business and does not have past data, then the financial evaluation will be done on the basis of information provided. 3. Scanned copy of the financial information as below signed by a Chartered Accountant is to be uploaded.					
FINANCIAL INFORMATION FOR THE PREVIOUS FOUR YEARS					
<u>"Figures to be as per Revised Schedule 6 of the Companies Act 2013, as applicable"</u>					
8.0	Parameter	Year 1	Year 2	Year 3	Year 4
(Years in ascending order, Money value in Rs. Lakhs)					
8.1	NET WORTH (Share Capital + Reserves)				
8.2	LONG TERM DEBT/ LOAN				
8.3	DEBT EQUITY RATIO $\frac{\text{Long term Debt (8.2)}}{\text{Net worth (8.1)}}$				
8.4	INVESTMENT IN: Land & Building				
	Plant & Machinery				
	Other Fixed Assets				
8.5	NET CURRENT ASSETS				
	a) Cash on hand				
	b) Account receivable				
	c) Inventories				
	d) Loans and advances				
	e) Other current assets				
	Total				
	CURRENT LIABILITY & PROVISIONS				
	a) Sundry creditors				
	b) Advances from customers				
c) Other liabilities					
d) Provisions					
Total					
8.6	QUICK RATIO				
	$\frac{\text{CA - Inventory } \{8.5(1) - 8.5(1)c\}}{\text{Current liability } \{8.5 (2)\}}$				
8.7	SALES (excluding other income)				
8.8	PROFIT BEFORE TAX				
8.9	Contingent Liabilities				
8.10	Whether the supplier has been referred to BIFR/ NCLT/ any other Govt agency (If YES, enclose details)				YES / NO
8.11	Whether the supplier is a potential sick company.(If YES, enclose details)				YES / NO

Date:

Name:

Membership number & Seal of Chartered Accountant

Signature -----

Part C: (QUALITY SYSTEM):

9.0	Parameters	System in effect (tick if exists & provide evidences if ticked in written procedure)		Records (tick if available & submit evidence)	Remark / Relevant documents to be furnished
		Written Procedure	Practice		
9.1	Incoming Material Control System				System and documentary evidence of control over sub-suppliers in the form of Quality Plan/ Checklist (Customer Hold Point (CHP), In-Stage Inspection etc.)
9.2.1	In Process Control				Work instructions/ checklist/ job card & record of process control parameter
9.2.2	Control on Outsourced Processes, if applicable				Documentary evidence of control over suppliers in the form of Quality Plan/ Checklist (Customer Hold Point (CHP), In-Stage Inspection etc.)
9.3	Manufacturing Process/ Testing Procedure Qualification				Copy of Manufacturing process work flow/ Testing Procedure Qualification
9.4	Personnel qualification for cl. 9.3 (above).				Copy of Record of Personnel qualification for critical processes (welding, painting, NDT etc.)
9.5	Calibration system				Copy of list of instruments & their calibration status(certificate from NABL/ any other Govt. approved & accredited lab)
9.6	System of Identification & Traceability of materials, tools, jigs, fixtures & processed components, etc.				Copy of procedure
9.7	System of Storage, Preservation, Painting & packing				Copy of procedure
9.8	System of Non Conformity Report (NCR) disposition, corrective and preventive action (CAPA)				Copy of System for NCR handling and list of NCRs observed in the last three years along with details of disposition and CAPA.
9.9	Customer complaints (CC) handling system, CC disposition, corrective and preventive action (CAPA)				Copy of System for CC handling and list of customer complaints in the last three years along with details of disposition and CAPA.
9.10	Safety measures				Copy of safety procedure/ guideline & Record of accidents for last three years.
9.11	Any other quality initiative				

Part D: TECHNICAL COMPETENCE (MARKS SHEET)

Technical competence shall be evaluated in two parts viz. common competence and product/ material category/ item specific competence.

a) COMMON TECHNICAL COMPETENCE

TECHNICAL COMPETENCE (where design specification is given by BHEL)	MARKING RANGE	Marking range, if product specific technical competency not required	Supplier to attach supporting documents	Marks by BHEL
Supplier understands the product specification.	(0-3)	(0-8)	e.g. Technical Catalogue	
Supplier understands the inspection requirements.	(0-2)	(0-5)	e.g. Inspection Report	
Supplier has process capability to achieve the product specification/dimensional requirement.	(0-3)	(0-8)	e.g. Type test report	
Supplier has experienced manpower to carry out the job.	(0-2)	(0-4)	e.g. skill matrix of the personnel	
TOTAL MARKS OUT OF POSSIBLE	10	25		

OR

TECHNICAL COMPETENCE (where performance specification is given by BHEL)	MARKING RANGE	Marking range, if product specific technical competency not required	PROCEDURE		SYSTEM IN EFFECT		RECORDS	
			Supplier to attach supporting documents	Marks by BHEL	Supplier to attach supporting documents	Marks by BHEL	Supplier to attach supporting documents	Marks by BHEL
Design capability	(0-3)	(0-8)						
Adequacy of quality assurance plan	(0-2)	(0-5)						
Process capability for components	(0-3)	(0-8)						
Adequacy of testing facilities	(0-2)	(0-4)						
TOTAL MARKS OUT OF POSSIBLE	10	25						
Average of Total (Total/3) = -----								

b) PRODUCT/ MATERIAL CATEGORY/ ITEM SPECIFIC TECHNICAL COMPETENCE

(Max. marks 15)

Unit MISCC to structure the parameters to be considered for technical competence and score of individual parameter depending on material category/ item. MISCC shall identify the requirement of enclosures to be furnished by supplier.

Product:

SNO	Material category/ item	Tech Parameter	Supplier's response with relevant documents	Remarks

To be filled up by supplier only on receipt of technical requirements/ Specification/ Drawings/ Standards from BHEL and to be sent to BHEL for further scrutiny.

Applicants need to comply with the requirements of the registration process. The information/ documents furnished will be treated in strict confidence.

Instructions for filling the Registration Form

- Supplier registration is only through online portal at <https://supplier.bhel.in>.
- All columns in the Registration Form are to be duly filled up. Indicate, '**NIL**'/ '**Not Applicable**', wherever details are not available or not relevant respectively.
- All sheets of the Registration Form are to be **signed & stamped/ digitally signed** by the authorized signatory.
- Expeditious furnishing of any clarification/ information required during registration to be ensured, failure of which may affect the registration process.
- PO copies/ Experience certificates/ Test certificates or any other required document will be sent for verification to the concerned issuing authority. Registration will be liable to be cancelled if any document is found to be fake/ false/ forged on verification.
- Submission of fake/ false/ forged documents will invite action by BHEL as per extant Guidelines for Suspension of Business Dealings and Fraud Prevention Policy (both as available on www.bhel.com).
- Just submission of supplier registration form does not mean automatic registration. Registration shall be done, after due evaluation and will be intimated accordingly.
- For a document in language other than Hindi/ English, a self-attested English translated document to be attached.
- Class 3, Signing & Encryption Digital Signature has to be obtained.

DECLARATION

(This declaration should be signed by the Proprietor/ Partner/ Director)

I/ We declare and confirm that the information furnished and attachments submitted with the application are true and correct. I/ we are aware that any false information provided herein will result in the rejection of my/ our application for registration. I/ we shall be bound by the acts of the duly authorized signatory, who has signed this application and of any other person, who in the future, may be appointed by us in his place, whether or not an intimation of such changes has been given. I/ we undertake to communicate promptly to BHEL any changes in the conditions or working of the firm.

I/ We.....also give the undertaking that BHEL's drawings & specifications shall not be used in any way detrimental to the interest of BHEL and/ or for supply of any material, product or services directly or indirectly to any other customer.

I/ We.....have read and understood that action can be taken as per extant guidelines for Suspension of Business Dealings with Supplier/ Contractor and Fraud Prevention Policy (both as available on www.bhel.com).

I/ Weagree to participate in E procurement as and when required by BHEL.

Name:

Position:

Date & Place:

Signature along with Office Seal:

- Scanned (Hard/ digitally) copy of declaration signed by the Proprietor/ Partners/ Director and/ or authorized signatory, who has the authority to do so, is to be uploaded.

PART- A: ORGANISATIONAL SOUNDNESS

1.0 ORGANISATIONAL INFORMATION				
1.1 NAME AND CORRESPONDENCE ADDRESS OF THE FIRM/ COMPANY TO BE REGISTERED				
1.2 REGISTERED OFFICE ADDRESS				
Tel: Landline				
Fax				
Website				
1.2 Correspondence address & Telephone no for:				
<ul style="list-style-type: none"> WORKS 1/ DIVISON 1/ BRANCH 1/ SISTER CONCERN 1: WORKS 2/ DIVISON 2 / BRANCH 2/ SISTER CONCERN 2: WORKS N/ DIVISON N/ BRANCH N/ SISTER CONCERN N: 				
1.3 PRODUCTS/ SYSTEMS/ SERVICES FOR WHICH REGISTRATION IS APPLIED FOR (ATTACH BROCHURES & CATALOGUES)				
SNO.	DESCRIPTION	SIZE & RANGE	MANUFACTURING STANDARD (IS/ DIN/ BS/ ASME etc.)	WORKS/ DIVISON (as per cl 1.2)
2.0 GENERAL INFORMATION				
2.1 DETAILS OF MARKETING REPRESENTATIVE (OUTSIDE INDIA , IF ANY):			2.2 DETAILS OF INDIAN REPRESENTATIVE, IF. ANY : (Attach authorization letter)	
Name				
Designation				
E-Mail				
Tel: Landline				
Mobile				
Fax				

BHARAT HEAVY ELECTRICALS LIMITED
SUPPLIER REGISTRATION FORM
(FOREIGN SUPPLIER)

Doc. No. AA:SSP:SR:01 Rev:02

Date: 26.09.2016

2.3 NAME & CONTACT DETAILS OF CHIEF EXECUTIVE:			
2.4 DIRECTORS / PARTNERS/ PROPRIETOR, IF RELATED TO ANY BHEL EMPLOYEE.		2.5 IF ANY EX-BHEL PERSONNEL IS EMPLOYED/ ENGAGED BY THE COMPANY	
Name of BHEL Employee		Name of Ex. BHEL Employee	
Staff No.& Designation		Staff No.& last Designation held	
Unit & Department		Place of last posting (Unit & Dept.)	
Relationship		Date of leaving Service from BHEL	
3.0 OWNERSHIP INFORMATION			
3.1 Nature of Business			
Tick that is applicable: • Manufacturing Unit/ Engg. Consultant/ EPC Contractor/ System Integrator () • Dealer*/ Trader*/ Distributor*/ Stockist*/ Channel Partners*/ Holding Company () *Non-Manufacturer needs to submit an Authorization Certificate, clearly indicating the validity period as well as rights granted by respective OEMs to them. i.e. to negotiate/ quote/ supply/ after sales service etc			
3.2 Year of Establishment			
3.3 Year of Commencement of Business			
3.4 Report from third party business rating agencies eg. Dun & Bradstreet/ Credit Reform Etc. (MANDATORY)			
3.5 Port of Loading			
3.6 Nearest Airport			
3.7 Production Capacity per Annum (details of relevant major manufacturing/ testing facilities to be furnished)			
3.8 Name (s) of Bankers			
(Enclose banker's certificate certifying creditworthiness)			
4.0 IF REGISTERED WITH ANY OF BHEL UNITS			
Name of BHEL unit			
Common/ Unit Supplier Identification (ID) number/ Code			
Items for which supplier is registered	Item 1	Item 2	

5.0 FINANCIAL INFORMATION FOR THE PREVIOUS FOUR YEARS

	Parameter	Year 1	Year 2	Year 3	Year 4
		(Years in ascending order, Money value in Rs. Lakhs)			
5.1	Turnover				
5.2	Profit After Tax				

Audited copies of annual reports/ complete set of annual accounts for the last four years (or from date of incorporation whichever is less) are to be submitted.

6.0 QUALITY MANAGEMENT SYSTEM

6.1 Whether Supplier is **ISO 9001** Certified

YES (Enclose Certificate)

NO (Enclose Quality Management System/
Written down Procedure)

7.0 EXPERIENCE LIST

Attach list of present customers with name & address for offered/ similar type & size of item/ equipment for which registration has been sought and with whom you have continuous business since last three years.

8.0 ANY OTHER INFORMATION:

9.0 LIST OF ENCLOSURES (Brochures, Catalogues, Technical Literature Etc.):

- i)
- ii)
- iii)
- IV)

Signature & Seal
(Authorized Signatory)

E – Mail:

Name:

Telephone: (landline):

Designation:

Mobile:

Date: