

=====

TENDER SPECIFICATION

TENDER NO. BHEL/NR/SCT/ANPARA-6&7/ STATOR UNLOADING/881

FOR

"Unloading of 2 No. 500 MW generator stator (258 MT Each) from BHEL's special wagon at railway siding inside Anpara D Plant, loading the stator on hydraulic trailer, transportation of stator to TG Hall of Unit No. 6&7 of 2x500 MW ANPARA D TPS, DISTT. SONEBHADRA, U.P."

PART I – TECHNICAL BID



Bharat Heavy Electricals Limited
(A Govt. Of India Undertaking)
Power Sector – Northern Region,
Plot No. 25 , Sector - 16A ,
Distt. Gautam Budh Nagar, NOIDA – 201 301(INDIA)



ISO 9001, ISO 14001,
OHSAS 18001 & SA 8000
certified company
SubContract and Purchase
Deptt.

Bharat Heavy Electricals Limited
(A Govt. Of India Undertaking)
Power Sector – Northern Region,
Plot No. 25 , Sector - 16A ,
Distt. Gautam Budh Nagar, NOIDA – 201 301(INDIA)
Phone: 0091-0120- 2416273 / 2416296
Fax 091-0120-2416528
Email: swapan@bhelsnr.co.in / pdas@bhelsnr.co.in

TENDER NO. BHEL/NR/SCT/ANPARA-6&7/ STATOR UNLOADING/881

IMPORTANT NOTE

PURCHASER OF THIS TENDER DOCUMENT IS ADVISED TO CHECK AND ENSURE COMPLETION OF ALL PAGES OF TENDER DOCUMENT AND REPORT ANY DISCREPANCY TIMELY FOR CORRECTIVE ACTION, IF ANY, TO THE ISSUING AUTHORITY BEFORE THE BIDS ARE SUBMITTED. ORIGINAL COPY OF TENDER DOCUMENT COMPLETE IN ALL RESPECTS MUST BE SUBMITTED BACK AS PART OF THE BID WITHOUT WHICH THE SAME IS LIABLE TO BE REJECTED BY BHEL.

THIS TENDER SPECIFICATION ISSUED TO:

M/S-----

Rev 01
1st Jun
2012

NOTICE INVITING TENDER

(Document No PS:MSX:NIT)

Bharat Heavy Electricals Limited



=====

NOTICE INVITING TENDER (NIT)

NOTE: BIDDER MAY DOWNLOAD FROM WEB SITES

OR

PURCHASE TENDERS FROM THIS OFFICE ALSO

=====

To

Dear Sir/Madam

Sub : NOTICE INVITING TENDER

Sealed offers in two part bid system are invited from reputed & experienced bidders (meeting PRE QUALIFICATION CRITERIA as mentioned in Annexure-I) for the subject job by the undersigned on the behalf of BHARAT HEAVY ELECTRICALS LIMITED as per the tender document. Following points relevant to the tender may please be noted and complied with.

1.0 Salient Features of NIT

SL NO	ISSUE	DESCRIPTION	
i	TENDER NUMBER	BHEL/NR/SCT/ANPARA-6&7/ STATOR UNLOADING/881	
ii	Broad Scope of job	"Unloading of 2 No. 500 MW generator stator (258 MT Each) from BHEL's special wagon at railway siding inside Anpara D Plant, loading the stator on hydraulic trailer, transportation of stator to TG Hall of Unit No. 6&7 of 2x500 MW ANPARA D TPS, DISTT. SONEBHADRA, U.P."	
iii	DETAILS OF TENDER DOCUMENT		
a	Volume-IA	<i>Technical Conditions of Contract (TCC) consisting of Scope of work, Technical Specification, Drawings, Procedures, Bill of Quantities, Terms of payment, etc</i>	Applicable
b	Volume-IB	<i>Special Conditions of Contract (SCC)</i>	Applicable
c	Volume-IC	<i>General Conditions of Contract (GCC)</i>	Applicable
d	Volume-ID	<i>Forms and Procedures</i>	
e	Volume-II	<i>Price Schedule (Absolute value).</i>	Applicable
iv	Issue of Tender Documents	<ol style="list-style-type: none"> <u>Sale from BHEL PS Regional office at :</u> Start 25.06.2012 , Time :09:00 Hrs Closes: 04.07.2012 , Time : 12:00 Hrs From BHEL website (www.bhel.com) Tender documents will be available for downloading from website till due date of submission 	Applicable/ Not applicable
v	DUE DATE & TIME OF OFFER SUBMISSION	Date : 04.07.2012, Time : 15:00 Hrs Place : BHEL PSNR NOIDA	Applicable
vi	OPENING OF TENDER	Date : 04.07.2012, Time : 15:30 Hrs (Within 2 hours of the latest due date and time of offer submission). Notes: (1) In case the due date of opening of tender becomes a non-working day, then the due date &	Applicable

		<i>time of offer submission and opening of tenders get extended to the next working day. (2) Bidder may depute representative to witness the opening of tender</i>	
vii	EMD AMOUNT	Rs. 1,50,000	Applicable
viii	COST OF TENDER	Rs 2000/-	Applicable
ix	LAST DATE FOR SEEKING CLARIFICATION	Date: 28.06.2012 <i>Along with soft version also, addressing to undersigned & to others as per contact address given below</i>	Applicable
x	SCHEDULE OF Pre Bid Discussion (PBD)		<i>Applicable/Not applicable.</i>
xi	INTEGRITY PACT & DETAILS OF INDEPENDENT EXTERNAL MONITOR (IEM)		<i>Applicable/Not Applicable</i>
xii	Latest updates	Latest updates on the important dates, Amendments, Correspondences, Corrigenda, Clarifications, Changes, Errata, Modifications, Revisions, etc to Tender Specifications will be hosted in BHEL webpage (www.bhel.com -->Tender Notifications →View Corrigendums) and not in the newspapers . Bidders to keep themselves updated with all such information	

- 2.0 The offer shall be submitted as per the instructions of tender document and as detailed in this NIT. Bidders to note specifically that all pages of tender document, including these NIT pages of this particular tender together with subsequent correspondences shall be submitted by them, duly signed & stamped on each page, as part of offer. **Rates/Price including discounts/rebates, if any, mentioned anywhere/in any form in the techno-commercial offer other than the Price Bid, shall not be entertained.**
- 3.0 Unless specifically stated otherwise, bidder shall remit cost of tender and courier charges if applicable, in the form of Demand Draft drawn in favour of Bharat Heavy Electricals Ltd, payable at Power Sector Regional HQ at Noida issuing the Tender, along with techno-commercial offer. Bidder may also choose to deposit the Tender document cost by cash at the Cash Office as stated above against sl no iv of 1, on any working day; and in such case copy of Cash receipt is to be enclosed with the Techno Commercial offer. Sale of tender Documents shall not take place on National Holidays, holidays declared by Central or State Governments and BHEL PS HQ at Noida, Sundays and second/ last Saturdays
- 4.0 Unless specifically stated otherwise, bidder shall deposit EMD through Demand Draft/Pay Order in favour of Bharat Heavy Electricals Ltd, payable at Noida. For other details and for 'One Time EMD' please refer General Conditions of Contract.
- 5.0 **Procedure for Submission of Tenders:** The Tenderers must submit their Tenders to Officer inviting Tender, as detailed below:
- PART-I consisting of 'PART-I A (Techno Commercial Bid)' & 'PART-I B (EMD/COST of TENDER)' in two separate sealed and superscribed envelopes (ENVELOPE-I & ENVELOPE-II)
 - PART-II (Price Bid) – in sealed and superscribed envelope (ENVELOPE-III)
 - One set of tender documents shall be retained by the bidder for their reference
- 6.0 The contents for ENVELOPES and the superscription for each sealed cover/Envelope are as given below. **(All pages to be signed and stamped)**

Sl no	Description	Remarks
	Part-I A	

	<p>ENVELOPE – I superscribed as : PART-I (TECHNO COMMERCIAL BID) TENDER NO : NAME OF WORK : PROJECT: DUE DATE OF SUBMISSION:</p> <p>CONTAINING THE FOLLOWING:-</p>	
i.	Covering letter/Offer forwarding letter of Tenderer.	
ii.	<p>Duly filled-in 'No Deviation Certificate' as per prescribed format to be placed after document under sl no (i) above.</p> <p>Note:</p> <p>a. In case of any deviation, the same should be submitted separately for technical & commercial parts, indicating respective clauses of tender against which deviation is taken by bidder. The list of such deviation shall be placed after document under sl no (i) above. It shall be specifically noted that deviation recorded elsewhere shall not be entertained.</p> <p>b. BHEL reserves the right to accept/reject the deviations without assigning any reasons, and BHEL decision is final and binding.</p> <p>i). In case of acceptance of the deviations, appropriate loading shall be done by BHEL</p> <p>ii). In case of unacceptable deviations, BHEL reserves the right to reject the tender</p>	
iii.	<p>Supporting documents/ annexure/ schedules/ drawing etc as required in line with Pre-Qualification criteria.</p> <p>It shall be specifically noted that all documents as per above shall be indexed properly and credential certificates issued by clients shall distinctly bear the name of organization, contact ph no, FAX no, etc.</p>	
iv.	All Amendments/Correspondences/Corrigenda/Clarifications/Changes/ Errata etc pertinent to this NIT.	
v.	Integrity Pact Agreement (Duly signed by the authorized signatory)	If applicable
vi.	Duly filled-in annexures, formats etc as required under this Tender Specification/NIT	
vii.	Notice inviting Tender (NIT)	
viii.	Volume – I A : <u>Technical</u> Conditions of Contract (TCC) consisting of Scope of work, Technical Specification, Drawings, Procedures, Bill of Quantities, Terms of payment, etc	
ix.	Volume – I B : Special Conditions of Contract (SCC)	
x.	Volume – I C : General Conditions of Contract (GCC)	
xi.	Volume – I D : Forms & Procedures	
xii.	Volume – II (UNPRICED – without disclosing rates/price, but mentioning only 'QUOTED' or 'UNQUOTED' against each item	
xiii.	Any other details preferred by bidder with proper indexing.	

	PART-I B	
	<p>ENVELOPE – II superscribed as: PART-I (EMD/COST of TENDER) TENDER NO : NAME OF WORK : PROJECT: DUE DATE OF SUBMISSION:</p> <p>CONTAINING THE FOLLOWING:-</p>	
i.	<p>1. Earnest Money Deposit (EMD) in the form as indicated in this Tender</p> <p style="text-align: center;">OR</p> <p>Documentary evidence for 'One Time EMD' with the Power Sector Region of BHEL floating the Tender</p>	

	2. Cost of Tender (Demand Draft or copy of Cash Receipt as the case may be)	
--	--	--

PART-II		
	PRICE BID consisting of the following shall be enclosed	
	<u>ENVELOPE-III</u> superscribed as: PART-II (PRICE BID) TENDER NO : NAME OF WORK : PROJECT: DUE DATE OF SUBMISSION:	
	CONTAINING THE FOLLOWING	
i	Covering letter/Offer forwarding letter of Tenderer enclosed in Part-I	
ii	Volume II – PRICE BID (Duly Filled in Schedule of Rates – rate/price to be entered in words as well as figures)	

OUTER COVER		
	ENVELOPE-IV (MAIN ENVELOPE / OUTER ENVELOPE) superscribed as: TECHNO-COMMERCIAL BID, PRICE BID & EMD TENDER NO: NAME OF WORK: PROJECT: DUE DATE OF SUBMISSION:	
	CONTAINING THE FOLLOWING:	
i	<ul style="list-style-type: none"> ○ Envelopes I ○ Envelopes II ○ Envelopes III 	

SPECIAL NOTE: All documents/ annexures submitted with the offer shall be properly annexed and placed in respective places of the offer as per enclosure list mentioned in the covering letter. BHEL shall not be responsible for any missing documents.

- 7.0 Deviation with respect to tender clauses and additional clauses/suggestions in Techno-commercial bid / Price bid shall NOT be considered by BHEL. Bidders are requested to positively comply with the same.
- 8.0 BHEL reserves the right to accept or reject any or all Offers without assigning any reasons thereof. BHEL also reserves the right to cancel the Tender wholly or partly without assigning any reason thereof. Also BHEL shall not entertain any correspondence from bidders in this matter (except for the refund of EMD).
- 9.0 **Assessment of Capacity of Bidders: Shall not applicable for this tender**
~~Bidders capacity for executing the job under tender shall be assessed 'LOAD' wise and 'PERFORMANCE' wise as per the following:~~

- i. ~~**LOAD:** Load takes into consideration **ALL** the contracts of the Bidder under execution with BHEL Regions, irrespective of whether they are similar to the tendered scope or not. The 'Load' is the sum of the unit wise identified packages (refer Table 1) for contracts with BHEL Regions. The cut off month for reckoning 'Load' shall be the month, two (2) months preceding the month corresponding to the 'latest date of bid submission', in the following manner:~~

(Note: For example if latest bid submission is in Aug 2011, then the 'load' shall be calculated upto and inclusive of June 2011)

i). Total number of Packages

Total number of Packages in hand = P

Where

- P is the sum of all unit wise identified packages under execution with BHEL Regions as of the cut off month defined above, including packages yet to be commenced.

ii) Weightage "A" assigned to bidders based on Total number of Packages 'P':

- a) If 'P' = 0-9, : "A" will be equal to '4'
- b) If 'P' = 10-18, : "A" will be equal to '3'
- c) If 'P' = 19-36, : "A" will be equal to '2'
- d) If 'P' = 37-60, : "A" will be equal to '1'
- e) If 'P' is above 60 : "A" will be equal to '0'

ii. **PERFORMANCE:** Here 'Monthly Performance' of the bidder for all the packages (**under execution/** executed during the 'Period of Assessment' in all the Power Sector Regions of BHEL) **SIMILAR** to the packages covered under the tendered scope, excepting packages not commenced shall be taken into consideration. The 'Period of Assessment' shall be 6 months preceding the cut off month. The cut off month for reckoning 'Period of Assessment' shall be the month two (2) months preceding the month corresponding to the 'latest date of bid submission', in the following manner:

(Note: For example if 'latest date of bid submission' is in Aug 2011, then the 'performance' shall be assessed for a 6 month period upto and inclusive of June 2011, for all the unit wise identified packages (refer Table I)

i). Calculation of Overall 'Performance Rating' for 'similar Package/Packages' for the tendered scope under execution at Power Sector Regions:

This shall be obtained by summing up the 'Monthly Performance Evaluation' scores obtained by the bidder in all Regions for all the similar Package/packages', divided by the total number of Package months for which evaluation should have been done, as per procedure below:

- a) $P_1, P_2, P_3, P_4, P_5, \dots, P_N$ etc be the packages (**under execution/** executed during the 'Period of Assessment' in all Regions) **SIMILAR** to the packages covered under the tendered scope, excepting packages not commenced. Total number of similar packages for all Regions = P_T (ie $P_T = P_1 + P_2 + P_3 + P_4 + \dots + P_N$)
- b) Number of Months ' T_1 ' for which 'Monthly Performance Evaluation' as per relevant formats, should have been done in the 'Period of Assessment' for the corresponding similar package P_1 . Similarly T_2 for package P_2 , T_3 for package P_3 , etc for the tendered scope. Now calculate cumulative total months ' T_T ' for total similar Packages ' P_T ' for all Regions (ie $T_T = T_1 + T_2 + T_3 + T_4 + \dots + T_N$)
- c) Sum ' S_1 ' of 'Monthly Performance Evaluation' Scores ($S_{1,1}, S_{1,2}, S_{1,3}, S_{1,4}, S_{1,5}, \dots, S_{1,N}$) for similar package P_1 , for the 'period of assessment' ' T_1 ' (ie $S_1 = S_{1,1} + S_{1,2} + S_{1,3} + S_{1,4} + S_{1,5} + \dots + S_{1,N}$). Similarly S_2 for package P_2 for period T_2 , S_3 for package P_3 for period T_3 , etc for the tendered scope for all Regions. Now calculate cumulative sum ' S_T ' of 'Monthly Performance Evaluation' Scores for total similar Packages ' P_T ' for all Regions (ie ' $S_T = S_1 + S_2 + S_3 + S_4 + S_5 + \dots + S_N$ ')

d) **Overall Performance Rating ' R_{BHEL} ' for the similar Package/Packages (under execution/** executed during the 'Period of Assessment') in all the Power Sector Regions of BHEL):

Aggregate of Performance scores for all similar packages in all the Regions

=

Aggregate of months for each of the similar package for which performance should have been evaluated in all the Regions

S_T

~~_____~~
~~_____T_T~~

e) ~~Bidders to note that the risk of non evaluation or non availability of the 'Monthly Performance Evaluation' reports as per relevant formats is to be borne by the Bidder~~

f) ~~Table showing methodology for calculating 'a', 'b' and 'c' above~~

Sl n e	Item Description	Details for all Regions							Total
		(iii)	(iv)	(v)	(vi)	(vii)	(viii)	(ix)	
1	Similar Packages for all Regions →	P ₁	P ₂	P ₃	P ₄	P ₅	...	P _N	Total No of similar packages for all Regions = P _T ie Sum (Σ) of columns (iii) to (ix)
2	Number of Months for which 'Monthly Performance Evaluation' as per relevant formats should have been done in the period of assessment for corresponding similar Package (as in row 1)	T ₁	T ₂	T ₃	T ₄	T ₅	...	T _N	Sum (Σ) of columns (iii) to (ix) = T _T
3	Monthly performance scores for the corresponding period (as in Row 2)	S _{1-1T} S _{1-2T} S _{1-3T} S _{1-4T} ... S _{1-T1}	S _{2-1T} S _{2-2T} S _{2-3T} S _{2-4T} ... S _{2-T2}	S _{3-1T} S _{3-2T} S _{3-3T} S _{3-4T} ... S _{3-T3}	S _{4-1T} S _{4-2T} S _{4-3T} S _{4-4T} ... S _{4-T4}	S _{5-1T} S _{5-2T} S _{5-3T} S _{5-4T} ... S _{5-T5}	S _{N-1T} S _{N-2T} S _{N-3T} S _{N-4T} ... S _{N-TN}	_____
4	Sum of Monthly Performance scores of the corresponding Package for the corresponding period (as in row 3)	S ₁	S ₂	S ₃	S ₄	S ₅	...	S _N	Sum (Σ) of columns (iii) to (ix) = S _T

ii) ~~Weightage "B" assigned to bidders based on Overall Performance Rating (R_{BHEL}) at Power Sector Regions, for the respective Package:~~

- a) If R_{BHEL} is ≥ 80%, "B" will be equal to '6'
- b) If R_{BHEL} is ≥ 75% < 80%, "B" will be equal to '5'
- c) If R_{BHEL} is ≥ 70% < 75%, "B" will be equal to '4'
- d) If R_{BHEL} is ≥ 65% < 70%, "B" will be equal to '3'
- e) If R_{BHEL} is ≥ 60% < 65%, "B" will be equal to '2'
- f) If R_{BHEL} is < 60%, "B" will be equal to '0'

III. ~~'Assessment of Capacity of Bidder' to be Qualified for the tender:~~

~~Shall be based on the sum of the weightages obtained in 'LOAD' (A) and 'PERFORMANCE' (B) as below:~~

- a) ~~If the sum (A+B) is 6 or above for each of the applicable Package, then the Bidder is considered 'Qualified' for the tender~~
- b) ~~If the sum (A+B) is less than 6 for any of the applicable Package, then the Bidder is considered 'NOT Qualified' for the tender~~

IV. ~~Explanatory note:~~

- a) ~~Similar package means Boiler or ESP or Piping or Turbine or Civil or Structure or Electrical or CI, etc at the individual level irrespective of rating of Plant, and irrespective of whether the subject tender is a single package or as part of combined/composite packages. Normally Boiler, ESP, Piping, Turbine, Electrical, CI, Civil, Structure, etc is considered individual level of package. For example in case the tendered scope is a Boiler Vertical Package comprising of Boiler, ESP and Power Cycle Piping (i.e the 'identified packages as per Table 1 below), the 'PERFORMANCE' part against sl no II above, needs to be evaluated considering all the identified packages (ie Boiler, ESP and Power Cycle Piping) and finally the Bidder's capacity to execute the tendered scope is assessed in line with III above~~
- b) ~~Identified Packages (Unit wise)~~

~~Table-1~~

	Civil	Electrical & CI	Mechanical
	i). Enabling works ii). Pile and Pile Caps iii). Civil Works including foundations iv). Structural Steel Fabrication & Erection v). Chimney vi). Cooling Tower vii). Others (Civil)	i). Electrical ii). CI iii). Others (Elec & CI)	i). Boiler & Aux (All types including CW Piping if applicable) ii). Power Cycle Piping/Critical Piping iii). LP Piping iv). ESP v). Steam Turbine Generator set & Aux vi). Gas Turbine Generator set & Aux vii). Hydro Turbine Generator set & Aux viii). Turbo Blower (including Steam Turbine) ix). Material Handling x). Material Management xi). Material Handling & Material Management xii). Others (Mechanical)

- c) ~~Vendors who are first timers to any BHEL Region, may be considered subject to satisfying other tender conditions. Eligibility of the party for the next tender of any package in that Region, shall be subject to the bidder satisfying the 'Assessment of Capacity of Bidder' for a period of first nine months after commencement of work or contract duration whatever is lesser.~~

~~In case the first timer is executing any other packages in any BHEL Region, then the performance evaluation will be based on the data available for the other packages though not similar, for the 'Period of assessment', for the purpose of 'Assessment of Capacity of Bidder'~~

- d) ~~Vendors who are not first timers and who have not been executing any package or packages similar to the packages under the tender in the 'Period of assessment', shall be considered qualified subject to them satisfying all other tender conditions.~~
- e) ~~In the unlikely event of all bidders shortlisted against Technical and Financial Qualification criteria not meeting the criteria on 'Assessment of Capacity of Bidders' detailed above, OR leads to a single tender response on applying the criteria of 'Assessment of Capacity of Bidders', then BHEL at its discretion, reserves the right to consider the further processing of the Tender based on the Overall Performance Rating 'R_{BHEL}' only.~~
- f) ~~'Under execution' shall mean works in progress as per the following:~~
- i. ~~upto Boiler Steam Blowing in case of Steam Generator and Auxilliaries~~

~~ii. upto Synchronisation in case of all other works excepting sl no (i) and (iii)~~

~~iii. upto execution of at least 75% of anticipated contract value (unit wise), in case of Enabling works or Civil & Structures.~~

~~Note : BHEL at its discretion can extend (or reduce in exceptional cases in line with Contract conditions) the period defined against (i), (ii) and (iii) above, depending upon the balance scope of work to be completed.~~

~~g) Performance evaluation in CL 9 above is applicable to Prime bidder and consortium partner (or Technical tie up partner) for their respective scope of work~~

- 10.0 Since the job shall be executed at site, bidders must visit site/ work area and study the job content, facilities available, availability of materials, prevailing site conditions including law & order situation, applicable wage structure, wage rules, etc before quoting for this tender. They may also consult this office before submitting their offers, for any clarifications regarding scope of work, facilities available at sites or on terms and conditions.
- 11.0 For any clarification on the tender document, the bidder may seek the same in writing or through e-mail, as per specified format, within the scheduled date for seeking clarification, from the office of the undersigned. BHEL shall not be responsible for receipt of queries after due date of seeking clarification due to postal delay or any other delays. Any clarification / query received after last date for seeking clarification may not be normally entertained by BHEL and no time extension will be given.
- 12.0 BHEL may decide holding of pre-bid discussion [PBD] with all intending bidders as per date indicated in the NIT. The bidder shall ensure participation for the same at the appointed time, date and place as may be decided by BHEL. Bidders shall plan their visit accordingly. The outcome of pre-bid discussion (PBD) shall also form part of tender.
- 13.0 In the event of any conflict between requirement of any clause of this specification/ documents/drawings/data sheets etc or requirements of different codes/standards specified, the same to be brought to the knowledge of BHEL in writing for clarification before due date of seeking clarification (whichever is applicable), otherwise, interpretation by BHEL shall prevail. Any typing error/missing pages/ other clerical errors in the tender documents, noticed must be pointed out before pre-bid meeting/submission of offer; else BHEL's interpretation shall prevail.
- 14.0 Unless specifically mentioned otherwise, bidder's quoted price shall deemed to be in compliance with tender including PBD.
- 15.0 Bidders shall submit Integrity Pact Agreement (Duly signed by authorized signatory who signs in the offer), **if applicable**, along with techno-commercial bid. This pact shall be considered as a preliminary qualification for further participation. **The names and other details of Independent External Monitor (IEM) for the subject tender is as given at point (1) above.**
- 16.0 The Bidder has to satisfy the Pre Qualifying Requirements stipulated for this Tender in order to be qualified. The Price Bids of only those bidders will be opened who will be qualified for the subject job on the basis of satisfying the Pre Qualification Criteria specified in this NIT as per Annexure-I (as applicable), past performance etc. and date of opening of price bids shall be intimated to only such bidders. BHEL reserves the right not to consider offers of parties under HOLD.
- 17.0 In case BHEL decides on a 'Public Opening', the date & time of opening of the sealed PRICE BID shall be intimated to the qualified bidders and in such a case, bidder may depute one authorised representative to witness the price bid opening. BHEL reserves the right to open 'in-camera' the 'PRICE BID' of any or all Unsuccessful/Disqualified bidders under intimation to the respective bidders.
- 18.0 Validity of the offer shall be for **six months** from the latest due date of offer submission (including extension, if any) unless specified otherwise.
- 19.0 BHEL reserves the right to decide the successful bidder on the basis of Reverse Auction process. In such case all qualified bidders will be intimated regarding procedure/ modality for Reverse Auction process prior to Reverse Auction and price will be decided as per the rules for Reverse Auction. .

However, if reverse auction process is unsuccessful as defined in the RA rules/procedures, or for whatsoever reason, then the sealed 'PRICE BIDS' will be opened for deciding the successful bidder. BHEL's decision in this regard will be final and binding on bidder.

- 20.0 On submission of offer, further consideration will be subject to compliance to tender & qualifying requirement and customer's acceptance, as applicable.
- 21.0 In case the bidder is an "Indian Agent of Foreign Principals", 'Agency agreement has to be submitted along with Bid, detailing the role of the agent along with the terms of payment for agency commission in INR, along with supporting documents.
- 22.0 The bidders shall not enter into any undisclosed M.O.U. or any understanding amongst themselves with respect to tender.
- 23.0 Consortium Bidding (or Technical Tie up) shall be allowed only if specified in Pre Qualifying Requirement (PQR) criteria, and in such a case the following shall be complied with:
- 23.1 Prime Bidder and Consortium Partner or partners are required to enter into a consortium agreement with a validity period of six months initially. In case the consortium is awarded the contract, then the Consortium Agreement between the Prime Bidder and Consortium Partner or partners shall be extended till contractual completion period including extension periods if any applicable.
- 23.2 'Stand alone' bidder cannot become a **Prime Bidder' or a 'Consortium bidder' or 'Technical Tie up bidder' in a consortium (or Technical Tie up) bidding**. Prime bidder shall neither be a consortium partner to other prime bidder nor take any other consortium partners. However, consortium partner may enter into consortium agreement with other prime bidders. In case of non compliance, consortium bids of such Prime bidders will be rejected.
- 23.3 Number of partners for a consortium Bidding (or Technical Tie up) shall be as specified in the PQR
- 23.4 Prime Bidder shall be as specified in the Pre Qualification Requirement, else the bidder who has the major share of work
- 23.5 In order to be qualified for the tender, Prime Bidder and Consortium partner or partners shall satisfy (i) the Technical 'Pre Qualifying Requirements' specified for the respective package, (ii) "Assessment of Capacity of Bidder" as specified in clause 9.0
- 23.6 Prime Bidder shall comply with additional 'Technical' criteria of PQR as defined in 'Explanatory Notes for the PQR'
- 23.7 Prime Bidder shall comply with all other Pre Qualifying criteria for the Tender unless otherwise specified
- 23.8 In case customer approval is required, then Prime Bidder and Consortium Partner or partners shall have to be individually approved by Customer for being considered for the tender.
- 23.9 Prime Bidder shall be responsible for the overall execution of the contract
- 23.10 In case of award of job, Performance shall be evaluated for Prime Bidder and Consortium Partner or partners for their respective scope of work(s) as per prescribed formats
- 23.11 In case the Consortium partner or partners back out, their SDs shall be encashed by BHEL. In such a case, other consortium partner or partners meeting the PQR have to be engaged by the Prime Bidder, and if not, the respective work will be withdrawn and executed on risk and cost basis of the Prime Bidder. The new consortium partner or partners shall submit fresh SDs as applicable.
- 23.12 In case the prime Bidder withdraws, the whole contract shall be considered cancelled and short closed.

- 23.13 After execution of work, the work experience shall be assigned to the Prime Bidder and the consortium partner or partners for their respective scope of work. After successful execution of two similar works with the same consortium partner or partners under direct orders of BHEL, the Prime Bidder shall be eligible for becoming a 'stand alone' bidder for similar works, subject to certification from BHEL about the active involvement of the Prime Bidder for satisfactory execution of the works.
- 23.14 The consortium partner shall submit SD equivalent to 2% of the total contract value in addition to the SD to be submitted by the prime Bidder for the total contract value. In case there are two consortium partners, then each partner shall submit SD equivalent to 1% of the total contract value in addition to the SD to be submitted by the prime Bidder for the total contract value.
- 23.15 In case of a Technical Tie up, all the clauses applicable for the Consortium partner shall be applicable for the Technical Tie up partner also
- 24.0 The bidder shall submit documents in support of possession of 'Qualifying Requirements' duly self certified and stamped by the authorized signatory, indexed and properly linked in the format for PQR. In case BHEL requires any other documents/proofs, these shall be submitted immediately.
- 25.0 The bidder may have to produce original document for verification if so decided by BHEL.
- 26.0 Order of Precedence
In the event of any ambiguity or conflict between the Tender Documents, the order of precedence shall be in the order below:
- a. Amendments/Clarifications/Corrigenda/Errata etc issued in respect of the tender documents by BHEL
 - b. Notice Inviting Tender (NIT)
 - c. Price Bid
 - d. Technical Conditions of Contract (TCC)—Volume-1A
 - e. Special Conditions of Contract (SCC) —Volume-1B
 - f. General Conditions of Contract (GCC) —Volume-1C
 - g. Forms and Procedures —Volume-1D

for BHARAT HEAVY ELECTRICALS LTD

(SCT)

Enclosure

01. Annexure-1: Pre Qualifying criteria.
02. Annexure-2: Check List.
03. Annexure-3 Reverse Auction Details
04. Other Tender documents as per this NIT.

ANNEXURE - 1**PRE QUALIFYING REQUIREMENTS**

JOB	"Unloading of 2 No. 500 MW generator stator (258 MT Each) from BHEL's special wagon at railway siding inside Anpara D Plant, loading the stator on hydraulic trailer, transportation of stator to TG Hall of Unit No. 6&7 of 2x500 MW ANPARA D TPS, DISTT. SONEBHADRA, U.P."
TENDER NO	BHEL/NR/SCT/ANPARA-6&7/ STATOR UNLOADING/881

SL. NO.	CRITERIA
1.0	TECHNICAL
1.1	Bidder should have in last seven years as on the latest date of bid submission, successfully carried out transportation of any ODC consignment of at least 200MT OR Generator Stator of 190 MW or higher capacity. Bidder shall furnish documentary evidence in support of the same
2.0	FINANCIAL
2.1	Bidder should have an average annual turnover of minimum of Rs. 20 Lakhs (Rs. Twenty lakh only) based on the audited accounts of last three financial years (2008-09, 2009-10 & 2010-11). Bidders shall submit audited annual accounts (balance sheets and profit & loss account) in support of this.
2.2	Net worth shall be calculated based on the latest audited accounts as furnished for 2.1 above. Net worth = Paid up share capital* + Reserves (* share capital or partnership capital or proprietor capital as the case may be) shall be positive.
2.3	Net Profit (PAT + Non cash expenditure viz depreciation) earned during any one year of last three financial years shall be positive..

BIDDER SHALL SUBMIT ABOVE PRE-QUALIFICATION CRITERIA FORMAT, DULY FILLED-IN, SPECIFYING RESPECTIVE ANNEXURE NUMBER AGAINST EACH CRITERIA AND FURNISH RELEVANT DOCUMENT INCLUSIVE OF WORK ORDER AND WORK COMPLETION CERTIFICATE ETC IN THE RESPECTIVE ANNEXURES IN THEIR OFFER.

ANNEXURE - 2**CHECK LIST****NOTE:- Tenderers are required to fill in the following details and no column should be left blank**

1	Name and Address of the Tenderer		
2	Details about type of the Firm/Company		
3.a	Details of Contact person for this Tender	Name : Mr/Ms Designation: Telephone No: Mobile No: Email ID: Fax No:	
3.b	Details of alternate Contact person for this Tender	Name : Mr/Ms Designation: Telephone No: Mobile No: Email ID: Fax No:	
4	EMD DETAILS	DD No: Date : Bank : Amount: Please tick (<input type="checkbox"/>) whichever applicable:- ONE TIME EMD / ONLY FOR THIS TENDER	
5	Validity of Offer	TO BE VALID FOR SIX MONTHS FROM DUE DATE	
		APPLICABILITY (BY BHEL)	ENCLOSED BY BIDDER
6	Whether the format for compliance with PRE QUALIFICATION CRITERIA (ANNEXURE-I) is understood and filled with proper supporting documents referenced in the specified format	Applicable	YES / NO
7	Audited profit and Loss Account for the last three years	Applicable/Not Applicable	YES/NO
8	Copy of PAN Card	Applicable/Not Applicable	YES/NO
9	Whether all pages of the Tender documents including annexures, appendices etc are read understood and signed	Applicable/Not Applicable	YES/NO
10	Integrity Pact	Applicable/Not Applicable	YES/NO
11	Declaration by Authorised Signatory	Applicable/Not Applicable	YES/NO
12	No Deviation Certificate	Applicable/Not Applicable	YES/NO
13	Declaration confirming knowledge about Site Conditions	Applicable/Not Applicable	YES/NO
14	Declaration for relation in BHEL	Applicable/Not Applicable	YES/NO
15	Non Disclosure Certificate	Applicable/Not Applicable	YES/NO
16	Bank Account Details for E-Payment	Applicable/Not Applicable	YES/NO
17	Capacity Evaluation of Bidder for current Tender	Applicable/Not Applicable	YES/NO

18	Tie Ups/Consortium Agreement are submitted as per format	Applicable/Not Applicable	YES/NO
19	Power of Attorney for Submission of Tender/Signing Contract Agreement	Applicable/Not Applicable	YES/NO
20	Analysis of Unit rates	Applicable/Not Applicable	YES/NO

NOTE : STRIKE OFF 'YES' OR 'NO', AS APPLICABLE. TENDER NOT ACCOMPANIED BY THE PRESCRIBED **ABOVE APPLICABLE DOCUMENTS** ARE LIABLE TO BE SUMMARILY REJECTED.

DATE :

AUTHORISED SIGNATORY
(With Name, Designation and Company seal)

GENERAL TERMS AND CONDITIONS OF REVERSE AUCTION (RA)

Against this enquiry for the subject item / system with detailed scope of supply as per our tender specification, BHEL-PSNR, NOIDA may resort to "REVERSE AUCTION PROCEDURE" i.e. **ONLINE BIDDING on INTERNET**.

1. For the proposed reverse auction, technically and commercially acceptable bidders only shall be eligible to participate.
2. BHEL will engage the services of a service provider who will provide all necessary training and assistance before commencement of on line bidding on Internet.
3. In case BHEL decides to conduct reverse auction, BHEL's service provider shall contact the vendor directly and impart them the training.
4. Business rules like event date, time, start price, bid decrement, extensions, etc. also will be communicated through service provider for compliance.
5. Vendors have to fax the compliance form in the prescribed (provided by service provider) before start of Reverse auction. Without this the vendor will not be eligible to participate in the event.
6. **Total Price quoted shall be inclusive of all taxes except service tax in line with the NIT conditions for the subject work in Indian Rupees (INR), which is to be worked out as per the BOQ (Rate Schedule) given in tender enquiry and subsequent changes made, if any. EXCEL Sheet shall be provided, if applicable.**
7. Reverse auction will be conducted on schedule date & time.
8. At the end of reverse auction event, the lowest bidder value will be known on the network.
9. The lowest bidder has to fax the duly signed filled-in prescribed format as provided on case-to-case basis to BHEL through service provider after completion of event on the same day preferably.
10. Any variation between the on-line bid value and signed document will be considered as sabotaging the tender process and will invite disqualification of vender to conduct business with BHEL as per prevailing procedure.
11. In case BHEL decides not to go for Reverse auction procedure for this tender enquiry, the price bids and price impacts, if any already submitted and available with BHEL shall be opened as per BHEL standard practice.

Authorization of representative who will participate in the on line Reverse Auction Process;

1	NAME & DESIGNATION OF OFFICIAL	
2	POSTAL ADDRESS (COMPLETE)	
3	TELEPHONE NOS. (LAND LINE & MOBILE BOTH)	
4	FAX NO.	
5	E-MAIL ADDRESS	
6	NAME OF PLACE/ STATE/ COUNTRY, WHEREFROM S/HE WILL PARTICIPATE IN THE REVERSE AUCTION	

SITE CONDITIONS

We,..... Hereby declare and confirm that we have visited the project sites under the subject namely,and acquired full knowledge regarding the strengthening of the Road/Trenches in advance which are coming on route from unloading point to Unit # 6 & 7 TG Building and information about the site conditions, wage structure, Industrial climate and total work involved. We further confirm that the above information is true and correct and we will not raise any claim of any nature due to lack of knowledge of site condition.

Tenderers Name and Address

(Signature of Tenderer with stamp)

TECHINICAL CONDITIONS OF CONTRACT (TCC)

TENDER NO. BHEL/NR/SCT/ANPARA-6&7/ STATOR UNLOADING/881

Unloading of 2 No. 500 MW generator stator (258 MT Each) from BHEL's special wagon at railway siding inside Anpara D Plant, loading the stator on hydraulic trailer, transportation of stator to TG Hall of Unit No. 6&7 of 2x500 MW ANPARA D TPS, DISTT. SONEBHADRA, U.P.



Bharat Heavy Electricals Limited
(A Govt. Of India Undertaking)
Power Sector – Northren Region,
Plot No. 25 , Sector - 16A ,
Distt. Gautam Budh Nagar, NOIDA – 201 301.INDIA

Chapter - 1: Project Information

Name of the Owner : Uttar Pradesh Rajya Vidyut Utpadan Nigam Ltd
(UPRVUNL)

Address : Anpara-D Thermal Power station
District- Sonbhadra
Uttar Pradesh

Installed capacity : New Project

Nearest Railway station : Singrauli -- 20 km
Renukoot -- 40 km
Varanasi -- 200 km

Nearest City : Varanasi-200 Km

Nearest Airport : Varanasi - 200 km

Maximum Temperature : 48 Deg C

Minimum temperature : Approx. 2 Deg C

2.0 SCOPE OF WORK

The work under the scope of these specifications is broadly as follows:

- 2.1 Unloading of 2 no. 500 MW generator stator (**258 MT**) from BHEL's special wagon at railway siding inside UPRVUNL's ANPARA D plant, loading the stator on hydraulic trailer, transportation of stator to TG Hall of Unit # 6 & 7 of 2 x 500 MW ANPARA D Thermal Power Station.
- 2.2 The Stator comes hanging over a Carrier Beam, which passes through the inside void portion of Stator and remains supported from the temporary end-shield bearings of Stator at both ends, while the Beam ends are mounted on the top of the two end segments of the Special Carrier Wagon and the whole Unit is pulled by a Railway engine. The beam is secured on both ends over the removable Wagon Segments with Bolts & Nuts.
- 2.3 Generator stator will be despatched by BHEL/ Hardwar unit through special wagon from Hardwar up to railway siding inside Anpara D plant approximately 3 kms from TG Hall of Anpara D TPS.
- 2.4 Scope of work under this tender broadly covers unloading of 2 no. 500 MW TG stators from BHEL's special wagon at railway siding inside ATPS loading the stator on hydraulic trailer, transportation of stator to TG Hall (Unit #6 & 7)

The work broadly includes following activities.

2.5 Unloading & Transportation:

- i) Unloading of stators from special wagon (Typical arrangement shall be as per enclosed drawing 0-139-38-01022C).
- ii) Reassembly of wagon with carrier beam.
- iii) Loading of stator on trailer (Typical arrangement shall be as per enclosed drawing 2139-38-01070).
- iv) Transportation of TG stator on hydraulic trailer from designated railway siding to TG Hall of unit #6 & 7 at 2x500 MW Anpara D Project site at a place as advised by BHEL engineer.
- v) Supervision of unloading of the stators in front of TG Hall of Unit # 6 & 7.

However, necessary manpower assistance for the unloading at TG Hall shall be provided by BHEL's other contractor.

TENDER NO. BHEL/NR/SCT/ANPARA-6&7/ STATOR UNLOADING/881

- 2.6 The following items are to be fabricated at site as per the drawings given which may be required for unloading and transportation of stator.
1. Bottom pedestals – 4 nos as per drg no 2-139-38-01002 (enclosed)
 2. Aux pedestals – 4 nos as per drg no 2-139-38-01042 (enclosed)
 3. Fixture for transportation – 2 nos as per drg no 2-139-38-01087 (enclosed)
 4. Fixture for road transport – 2 nos as per drg no 2-139-38-01071 (enclosed)
 5. Hydraulic trolley to be fabricated by contractor as per Hardiwar drg (enclosed).

The materials required for the fabrication of items SI no 1 to 5 like plates, angles, channels shall be supplied by BHEL site. All other items will have to be arranged by the contractor.

Welders will have to be tested to BHEL's satisfaction. Test pieces will be radiographed. All welding will be subjected to 100% LPI for butt and 10% LPI for fillets at the root joints.

Note:

Drawing 0-139-38-01022C & 2139-38-01070 is standard drawing. However it is to be read along with CHAPTER III (Suggested sequence of operation). Drawings are attached at the end of this document,

2.7 SPECIAL CONDITIONS:

SITE VISIT AS PER ANNEXURE-IV OF NIT.

2.8 PROHIBITION OF SUB-LETTING

The contractor is not allowed to pass responsibilities connected with the transportation to other agency/ contractor. The contractor, after entering into contract, would not be permitted to arrange transport of consignments entrusted to him through another contractor, except with the written permission of BHEL under exceptional circumstances. However, hiring of vehicles and services from other agencies/ contractors is permitted but the onus of safe and timely transportation of the consignment rests with the contractor. The contractor shall not sublet or transfer the contract or any part thereof, which will tantamount to termination of the contract and forfeiture of security deposit and BHEL will also be entitled to claim all damages/ losses/ extra expenditure involved from the contractor as per relevant clause has to ensure adequate compactness of ground where Stator is to be unloaded.

A. For unloading of TG Stator from special Rail wagon (Refer drg. 01393801022C)

1. Civil work for ground improvement like RCC / PCC has been completed by BHEL site as per the drg enclosed.
2. Stator shall be available, assembled with rail wagon, as shown in Stage 6. Remove item 13 Support beam (02 nos).
3. Assemble all 04 nos saddles including 02 nos of new design saddles with ribs at both ends of stator and assemble the fasteners item no 5 to 8 as shown in the drawing.
4. Place Pedestals items 1-2 (Qty 04 each) along with 175 MT hydraulic jack item 03 (Qty 04 nos) below the projected ribs of the end saddles and release load of stator from loading beam using Hydraulic jack and packers/shims item no 04-8 as shown in Stage 5.
5. Unlock loading beam from the Bogie Cluster "B" and extract beam from stator with the help of Stopper support and Roller blocks (items 11 & 12) up to the position shown in Stage 4. Assemble Hydraulic trolley (item 09) as shown and transfer load of beam on the trolley.
6. Extract the beam completely with the help of Hydraulic trolley (item 09) as shown in Stage 3.
7. Re-assemble beam with the Bogie Cluster "B" through the siding rail track as shown in Stage 2 & 1.
8. Remove carrier end shields and assemble dummy end covers (package No. 559) at both ends of the stator.

B. For loading of Stator on hydraulic trailer (Refer drawing 21393801070C)

1. Stator will be placed on the pedestals as shown in drg 01393801022C. Theoretical bottom clearance shall be ~350 mm and pedestal to pedestal distance shall be $2 \times 1630 = 3260$ mm.
2. Raise the height of Stator suitably to accommodate the Trailer below the stator assembled with saddles, with the help of intermediate pedestals and Hydraulic jacks placed at the location of new design saddles.
3. Move the Trailer below the stator and release the load of the stator on the trailer.
4. Secure the stator suitably (welded stoppers) for safe road transport.

C. Sequence of operations for Un-loading of Stator from trailer at site (Refer drawing 21393801070C & 01393801022C)-near A-row of TG building.

1. Move Hydraulic trailer (loaded with Stator) to the unloading position and align stator centre line with respect to the centre lines shown in the foundation plan of drg 01393801022C.
2. Carefully remove welded stoppers etc. between loading fixtures and trailer and remove security tying etc. if any

TENDER NO. BHEL/NR/SCT/ANPARA-6&7/ STATOR UNLOADING/881

3. Place Pedestals items 1-2 (Qty 04 each) along with 175 MT hydraulic jack item 03 (Qty 04 nos) below the projected ribs of the end saddles and release load of stator from trailer, using Hydraulic jack and packers/shims item no 04-8.
4. Carefully move unloaded trailer to a safe distance from the Stator.
5. Stator is now placed on the pedestals, ready for next operation.

- Note:** 1) Haridwar will depute their experts to support the site during above operation.
2) Package no.559 (dummy end covers) shall be supplied matching with stator dispatch.

D: List of items required Ref: Drawings No.0-139-38-01022C

S.No.	Item No. as given in Ref. drg	Description	Qty.	Remarks
1	1	Bottom Pedestal	04 nos	To be fabricated by Contractor as per Drg No.2-139-38-01002.
2	2	Aux. Pedestals	04 nos	To be fabricated by Contractor as per Drg No.2-139-38-01042
3	3	175 MT Hydraulic Jacks	04 Nos	To be arranged by Contractor
4	4 to8	Shims	as reqd.	To be arranged by HWR
5	9	Hydraulic Trolley	01 No	To be fabricated by contractor
6	10	Carrier end shield	02 Nos	These items after unloading loaded on the wagon for the sending it back to Hardwar
7	11	Stopper supports	02 Nos	
8	12	Roller Blocks	04 Nos	
9	13	Support Beams	02 nos	

Ref: Drawings No.0-139-38-01070

S.No.	Item No. as given in Ref. drg	Description	Qty.	Remarks
1	1	Plate 50x80x80	08 Nos.	BHEL Site will provide
2	2	Fixture for road Transport/ saddles	04 Nos.	To be fabricated by Contractor
3	3	Rubber sheet 5x1000x1600	08 Nos	To be arranged by HWR
4	4	Plate 40x100x100	16 Nos.	BHEL Site Will provide
5	5	Screw Hex-for saddle	08 Nos.	HWR
6	6	Washer	16 Nos	HWR
7	7	Nut Hex		HWR
8	8	Shim:0.5 x400x250		HWR

NOTE:

Structural steel like Plates, angles for the Bottom pedestals, Aux. pedestals, Hydraulic Trolley and Fixture for road transport/saddles will be provided by BHEL site. However, all other items require for the fabrication like rail wheel & axle will be in the scope of the contractor.

4.1 TOOLS & PLANTS:

- 1) 175 MT Hydraulic jacks including 150 T telescopic jacks for facilitating removal of carrier beam, which is coming along with generator stator in the wagon, shall have to be arranged by Contractor as a part of scope of work. Apart from above, successful contractor shall have to make necessary arrangement for deployment of tools & plants (T&P), hydraulic trailers, vehicles, fixtures, etc, as required for proper completion of the job, at their own cost.
- 2) A wheeled support hydraulic rail trolley fabricated by contractor as per drawing, is to be provided for resting of the wagon carrier beam at one end of stator to prevent touching of the same with stator core and consequent damages.
- 3) T & P along with other items as per SECTION D: List of items required of Chapter III (Suggested sequence of operation) in which items to be arranged by Contractor are clearly mentioned in reference with Drawing 0- 139-38-01022C & 2139-38-01070.
- 4) The pay load capacity (carrying capacity minus weight of axles) of hydraulic axles provided for transportation (put together) must be more than gross weight of the consignment. The capacity of puller will not be considered for this purpose.

4.2 ITEMS TO BE SUPPLIED BY BHEL AT POINT OF UNLOADING FROM WAGON ON RETURNABLE BASIS:

- 1) Item nos 10, 11, 12 & 13 of enclosed drg no 0-139-38-01022C will be assembled with the stator dispatched from BHEL/ Hardwar. After unloading it is to be loaded on the wagon for the sending it back to Hardwar and these are notto be handed over to site.
- 2) Contractor is required to return all the rest items along with the stator at Anpara D Project site.
- 3) T & P as per SECTION D: List of items required of Chapter III 'Sequence of Operations' (Suggested sequence of operation) in which items to be arranged by BHEL/HWR are clearly mentioned in reference with Drawing 0- 139-38-01022C & 2139-38-01070.

Chapter-V: TIME SCHEDULE

5.0 TIME PERIOD FOR THE WORK:

5.1 The contractor is required to commence the work within 15 days from the date of issue of LOI unless BHEL decides to fix any other later date. However, the actual date of start of work, to fix up the zero date of the contract, will be certified by BHEL Engineer after adequate mobilization of manpower and T&Ps by the contractor.

5.2 COMPLETION PERIOD :

The entire work as detailed in the specification shall be completed in all respects within 30 (thirty) days from the start of work for each unit.

However, the actual date of start of work will be the date when unloading of stator of the respective unit from wagon is started and shall be certified by BHEL engineer.

5.3 LIKELY TIME OF EXECUTION

Generator Stator of Unit #6 has already arrived at Railway siding inside ATPS since May'12. Gen. stator of Unit #7, is scheduled to be dispatched from BHEL Haridwar at end of August 2012 by rail and expected at site by September 2012.

5.4 CERTIFICATE TOWARDS COMPLETION

The work under your scope shall be deemed to have been completed in all respects only when so certified by BHEL. The decision of BHEL in this regard shall be final and binding on you.

Chapter-VI: TERMS OF PAYMENTS

6.0 TERMS OF PAYMENT

6.1 95% of Contract value (S.no. 1 of Rate schedule)

- A. Payment of 50 % of the contract value shall be payable on completion of the entire work of Unit No. 6 Stator against contractor's invoice, correct & complete in all respects, accompanied by joint measurement of work done duly signed by BHEL engineer, within 30 days of receipt of invoice by BHEL site office.
- B. Payment of 45 % of the contract value shall be payable on completion of the entire work of Unit No. 7 Stator against contractor's invoice, correct & complete in all respects, accompanied by joint measurement of work done duly signed by BHEL engineer, within 30 days of receipt of invoice by BHEL site office.

6.2 Balance 5 % of contract price shall be paid on winding up of site establishment as certified by BHEL engineer along with final bill.

6.3 BHEL at their discretion may further split up the above percentages and effect payment to suit the site condition, cash flow requirement and according to the progress of work.

6.4 Contractor may please note that payment shall be made through e-mode for which bank details are to be furnished as per format given in relevant annexure of Volume-IE of tender.

6.5 PERFORMANCE GUARANTEE

Not applicable.

6.6 PRICE VARIATION CLAUSE

Not applicable.

6.7 OVERRUN CHARGES

Not applicable.

6.8 EXTRA WORK

Not applicable.

Chapter - VII: TAXES, DUTIES, LEVIES

7.0 TAXES, DUTIES, LEVIES

The contractor shall pay all (save the specific exclusions as enumerated in this contract) taxes, fees, license charges, deposits, duties, tools, royalty, commissions or other charges which may be levied on the input goods & services consumed and output goods & services delivered in course of his operations in executing the contract. In case BHEL is forced to pay any of such taxes, BHEL shall have the right to recover the same from his bills or otherwise as deemed fit.

However, provisions regarding **Service Tax and Value Added Tax (VAT)** on output services and goods shall be as per following clauses.

7.1 Service Tax & Cess on Service Tax

Service Tax and Cess on Service Tax as applicable on output Services are excluded from contractor's scope; therefore contractor's price/rates shall be exclusive of Service Tax and Cess on Output Services.

Contractor shall obtain prior written consent of BHEL before billing the amount towards such taxes. The Service Tax Rules permit more than one option or methodology for discharging the liability of tax/levy/duty and BHEL will have the right to adopt the appropriate one considering the amount of tax liability on BHEL/Client as well as procedural simplicity with regard to assessment of the liability. The option chosen by BHEL shall be binding on the

Contractor for discharging the obligation of BHEL in respect of the tax liability to the Contractor. Contractor shall submit to BHEL documentary evidence of Service Tax registration certificate specifying name of services covered under this contract. For the purpose of claiming any Service Tax from BHEL, the following procedure shall be adopted :

Contractor shall submit serially numbered Service Tax and Cess Invoices, signed by him or a person authorized by him in respect of taxable service provided, and shall contain the following, namely:

1. The name, address and registration number of the contractor
2. The name and address of the party receiving taxable service (BHEL)
3. Description, classification and value of taxable service provided and
4. The Service Tax payable thereon.

All the four conditions shall be fulfilled in the invoice for payment of Service Tax by BHEL.

Where more than one nature of Service under Service Tax Rules is involved, the invoice mentioned above shall contain the break up of all values for each nature of Service.

7.2 VAT (Sales Tax /WCT)

The rates quoted by the Contractor shall be inclusive of VAT/Sales Tax and BHEL shall not reimburse any amount on this account due to any reason whatsoever.

The Contractor shall register himself with the respective Sales Tax authorities of the state and submit proof of such registration to BHEL along with the first RA bill.

Deduction of tax at source shall be made as per the provisions of law unless otherwise found exempted.

In case tax is deducted at source as per the provisions of law, this is to be construed as an advance tax paid by the contractor and no reimbursement thereof will be made unless specifically agreed to.

TENDER NO. BHEL/NR/SCT/ANPARA-6&7/ STATOR UNLOADING/881

Contractor has to make his own arrangement at his cost for completing the formalities, if required, with Sales Tax/VAT Authorities, for bringing all their material, plant and equipment etc at site for the execution of the work, including arrangement of Road Permits if and as applicable under the relevant VAT Act.

7.3 Modalities of Tax Incidence on BHEL

Wherever the relevant tax laws permit more than one option or methodology for discharging the liability of tax/levy/duty, BHEL will have the right to adopt the appropriate one considering the amount of tax liability on BHEL/Client as well as procedural simplicity with

regard to assessment of the liability. The option chosen by BHEL shall be binding on the Contractor for discharging the obligation of BHEL in respect of the tax liability to the contractor.

7.4 New Taxes/Levies

In case the Government imposes any new levy/tax on the output service/goods/work after award of the contract, the same shall be reimbursed by BHEL at actual.

In case any new tax/levy/duty etc. becomes applicable after the date of Bidder's offer, the Bidder/Contractor must convey its impact on his price duly substantiated by documentary evidence in support of the same before opening of PriceBid. Claim for any such impact after opening the Price Bid will not be considered by BHEL for reimbursement of tax or reassessment of offer.

No reimbursement/recovery on account of increase/reduction in the rate of taxes, levies, duties etc. on input goods/services/work shall be made. Such impact shall be taken care of by the Price Variation/Adjustment Clause (PVC) if any. In case PVC is not applicable for the contract, Bidder has to make his own assessment of the impact of future variation if any, in rates of taxes/duties/ levies etc. in his price bid.

Chapter-VIII: GENERAL CONIDITIONS

8.0 GENERAL CONDITIONS

1. Unloading from wagon and loading of consignment at ATPS near fire station point of railway siding is included in the scope of work. Necessary supervision for unloading at a point of the TG Hall as decided by BHEL Engineer is also included in the scope of the contract.
2. ALL SAFETY & STATUTORY ASPECTS ARE TO BE ENSURED BY THE CONTRACTOR.
3. All relevant authorization from competent authorities (for safe transportation of the consignments) shall be obtained by contractor at his own cost. Any contingency arising in this respect shall be the responsibility of contractor. The contractor shall be responsible for safe unloading/loading. Any mishap, accident, damage to any third party (person/ property) enroute and consequences thereof including legal complications, if any shall be the responsibility of contractor and BHEL will stand indemnified.
4. The contractor will be responsible of compliance of various Pollution Control Regulations of State/ Central Govt or Constitutional Regulatory Authority as applicable to trailer/ puller and other vehicles deployed for safe transportation of consignments.
5. The contractor shall carry materials/ packages/ consignments in vehicles suitably equipped for the same. He shall take all due care for protecting the consignments from adverse weather condition and be responsible for their safe and sound condition during his possession. The contractor shall take all due care of consignments and shall provide all packing and lashing at his own cost. Electrodes/welding facility or any other materials/ tools, if required, will be arranged by the contractor. Any problem of transportation arising due to rainy season shall be taken care of by the contractor for smooth & safe transportation.
6. The contractor and his authorized agents shall comply with the security regulations of BHEL/ UPRVUNL and consignee premises at destination in the matter of entry/ exit and for the movement inside the premises of BHEL/ project sites. The contractor shall ensure that all employees/ persons engaged/ authorized by him for carrying out the work, behave properly with the company's officers/ staff. In the event of any misbehavior, reported by the officer concerned of BHEL, the contractor shall immediately withdraw such employee/ persons from the work.
7. BHEL shall insure the consignments with the underwriters/ insurance company. This shall however, not absolve the contractor of any responsibility of safe and proper transportation of the goods to the proper destination of his liability to compensate BHEL for the damages/ shortages in respect of the consignments. The bidder will have to coordinate and cooperate with the underwriter, if situation requires.
8. Necessary road work as required for the subject job shall be in the scope of BHEL. However, the successful contractor shall undertake the route survey and furnish the requirements viz. strengthening of the road etc within 7 days of LOI.
9. All the safety precautions required for safe transportation such as lashing and securing the consignment, providing of red flags, lights, pilot/ escorts etc shall be the responsibility of the contractor.

TENDER NO. BHEL/NR/SCT/ANPARA-6&7/ STATOR UNLOADING/881

10. The rates agreed between BHEL and the contractor will remain firm.
11. Detention charges, if required will be paid @ Rs 8,000/- (Rupees eight thousand only) per day up to a total period of 60 days only, but after a grace period of 7 days at loading point and after a grace period of 7 days at destination.
12. Tax deduction at source shall be applicable as per Government Rules from time to time.
13. No idle charge of manpower & equipment is permissible in this work contract.
14. Rates shall be firm and inclusive of all charges including civil works (except road civil works) & related works which may be required statutorily or otherwise for safe transportation of the consignments upto destination.
15. Development of Railway siding, development//widening/consolidation of all approach road is excluded from the scope of work of contractor
16. Notice period to place vehicle(s) along with all T&P, fixtures, all paraphernalia at designated place from where unloading/ transportation is to be started is 15 days or directed otherwise by Construction Manager, BHEL site, Anpara D.
17. Loading/ unloading time at the point of unloading of stator from wagon and at TG Hall one week respectively.
18. Total distance of route from point of unloading of stator from wagon to TG Hall of Unit-6&7 of project site is approximately 3 km.
19. In addition to the local laws and regulations, contractor shall also comply with the Minimum Wages Act and the Payment of Wages Act (both of the Government of India) and the rules made there under in respect of its labour currently employed on or connected with the contract.
20. No material brought to the site shall be removed from the site by contractor without the prior written approval of BHEL.
21. Contractor shall co-operate with all other contractors or tradesmen of BHEL, who may be performing other works on behalf of BHEL and the workmen who may be employed by BHEL and doing work in the vicinity of the works under the contract. Contractor shall also arrange to perform his work as to minimise, to the maximum extent possible, interference with the work of other contractors and their workmen. Any injury or damage that may be sustained by the employees of the other contractors and BHEL, due to contractor's work shall promptly be made good at his own expense. BHEL shall determine the resolution of any difference or conflict that may arise between contractor and other Contractors or between contractor and the workmen of BHEL in regard to their work. If the work of contractor is delayed because of any acts of omission of another contractor, contractor shall have no claim against BHEL on that account other than an extension of time for completing his works.
22. Employer shall have full access to visit contractor's site at any time for inspection and surveillance checks.
23. BHEL shall be notified promptly by contractor of any defects in the other contractor's works that could affect contractor's work. BHEL shall determine the corrective measures if any,

TENDER NO. BHEL/NR/SCT/ANPARA-6&7/ STATOR UNLOADING/881

- required to be rectified this situation after inspection of the works and such decisions by BHEL shall be binding on contractor.
24. Contractor shall adhere to the disciplinary procedure set by BHEL in respect of his employees and workmen at site. BHEL shall be at liberty to object to the presence of any representative or employee of contractor at the site, if in the opinion of BHEL such employee has misconducted himself or is incompetent, negligent or otherwise undesirable then contractor shall remove such a person objected to and provide in his place a competent replacement.
 25. Contractor shall keep BHEL informed in advance regarding his field activity plans and schedules for carrying out each part of the works. Any review of such plan or schedule or method of work by BHEL shall not relieve contractor of any of his responsibilities towards the field activities. Such reviews shall also not be considered as an assumption of any risk or liability by BHEL or any of his representatives and no claim of contractor will be entertained because of the failure or inefficiency of any such plan or schedule or method of work reviewed. Contractor shall be solely responsible for the safety, adequacy and efficiency of plant and equipment and his material management methods.
 26. Contractor shall have complete responsibility for the conditions of work site including the safety of all persons employed by him and all the properties under his custody during the performance of the work. This requirement shall apply continuously till the completion of the contract and shall not be limited to normal working hours. The construction review by BHEL is not intended to include review of Contractor's safety measures in, on or near the work site, and their adequacy or otherwise.
 27. Contractor shall have total responsibility for protecting his works till it is finally issued from his custody to respective erection agencies. No claim will be entertained by BHEL or the representative of BHEL for any damage or loss to the materials under custody of Contractor' and contractor shall be responsible for complete restoration of the damaged works to original conditions to the satisfaction of BHEL's engineer. Should any such damage to contractor's works occur because of other party not being under his supervision or control, contractor shall make his claim directly with the party concerned.
 28. If disagreement or conflict or dispute develops between contractor and the other party or parties concerned regarding the responsibility for damage to the materials etc under contractor's custody the same shall be resolved as per the provisions of the as specified at relevant clause of this tender. Contractor shall not cause any delay in the repair of such damaged works because of any delay in the resolution of such disputes. Contractor shall proceed to repair the work immediately and no cause thereof will be assigned pending resolution of such disputes. For security refer relevant clause.

In case BHEL becomes liable to pay any wages or dues to the labour or any Government agency under any of the provisions of the Minimum Wages Act, Workmen Compensation Act, Contract Labour Regulation Abolition Act or any other law due to act of omission of contractor, BHEL may make such payments and shall recover the same from contractor's bills with BHEL's overheads.

29. Contractor shall have total responsibility for all equipment and materials in his custody at stores for loose, and/ or semi-assembled items. Contractor shall make suitable security arrangements to ensure the protection of all materials, equipment and works from theft, fire, pilferage and any other damages and loss. All materials of contractor shall enter and leave BHEL site only with the written permission of BHEL in the prescribed manner.
30. In case where the performance of the material handling work by contractor affects the operation of the system facilities of BHEL, such material handling work of contractor shall

TENDER NO. BHEL/NR/SCT/ANPARA-6&7/ STATOR UNLOADING/881

- be scheduled to be performed only in the manner stipulated by BHEL and the same shall be acceptable at all times to contractor. BHEL may impose such restrictions on the facilities provided to contractor such as electricity, etc as he may think fit in the interest of BHEL and contractor shall strictly adhere to such restrictions and co-operate with BHEL.
31. Contractor shall bring to site all equipment, components, parts, materials, including construction equipment, tools & tackles for the purpose of the works under intimation to BHEL. All such goods shall, from the time of their being brought vest in BHEL, but may be used for the purpose of the Works only and shall not on any account be removed or taken away by contractor without the written permission of BHEL.
 32. Contractor shall nevertheless be solely liable and responsible for any loss or destruction thereof and damage thereto.
 33. BHEL shall have a lien on such goods for any sum or sums, which may at any time be due or owing to him by contractor, under, in respect of or by reasons of the contract.
 34. After giving a 15 (fifteen) days notice in writing of his intention to do so, BHEL shall be at liberty to sell and dispose off any such goods, in such manner as he shall think fit including public auction or private treaty and to apply the proceeds in or towards the satisfaction of such sum or sums due as aforesaid.
 35. After the completion of the works, contractor shall remove from site under the direction of BHEL the materials such as construction equipment, erection tools and tackles, scaffolding etc. with the written permission of BHEL. If contractor fails to remove such materials, within fifteen (15) days of issue of a notice by BHEL to do so then BHEL shall have the liberty to dispose off such materials and credit the proceeds thereto to the account of contractor.
 36. The contractor shall hereby indemnify the company against all losses, claims etc. (including third party losses) arising out of any of his acts or out of the acts of his servants and his agents and out of transportation of the company goods.

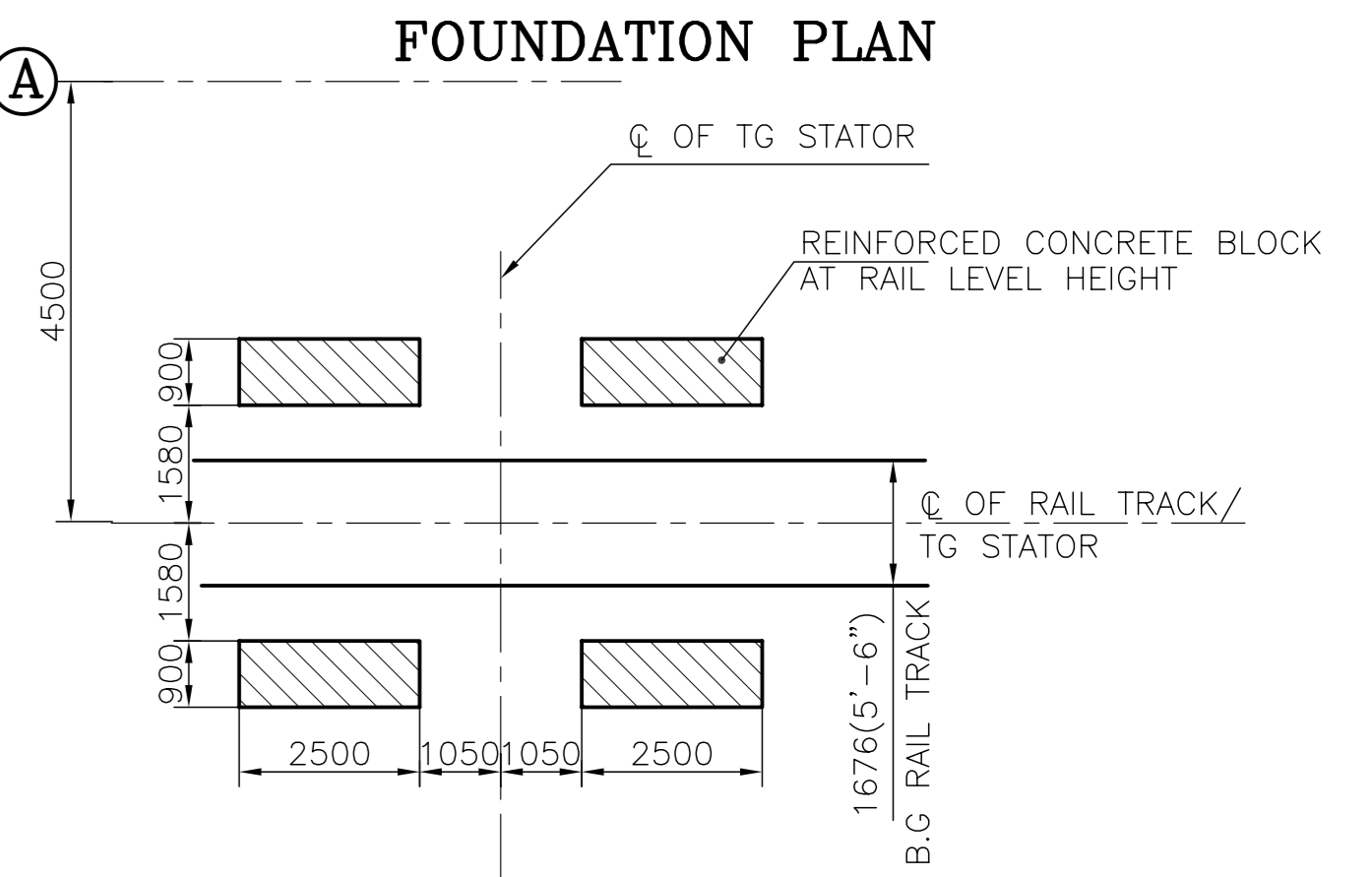
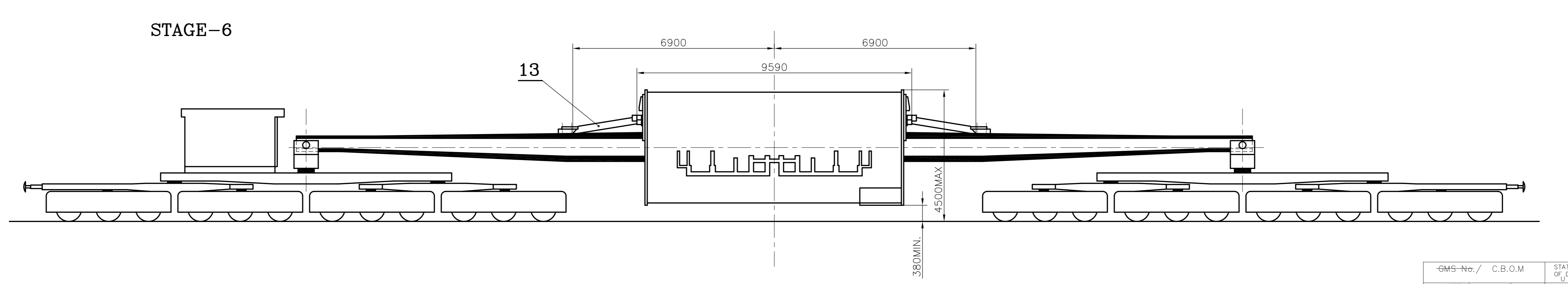
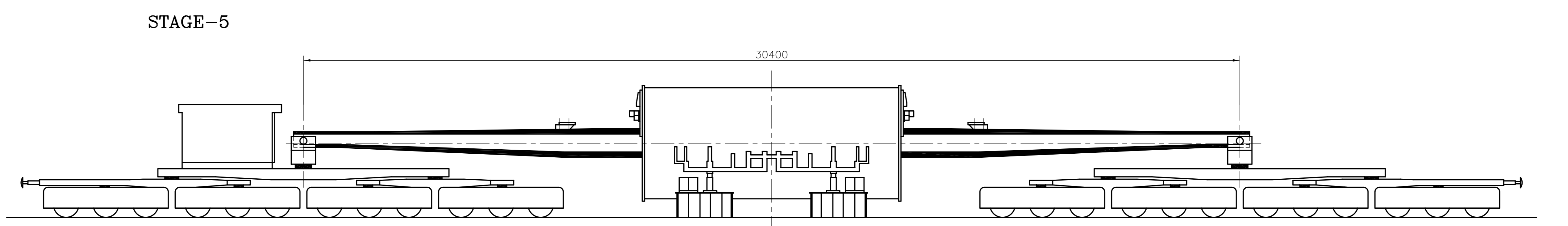
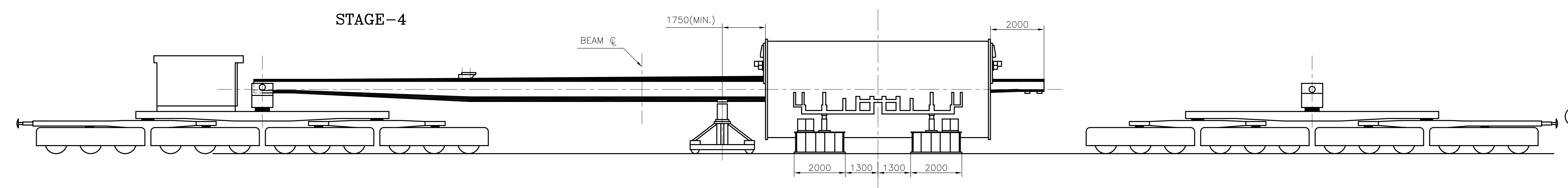
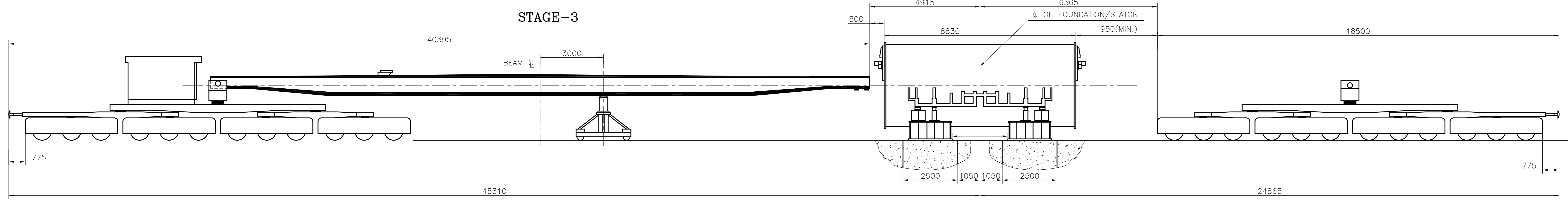
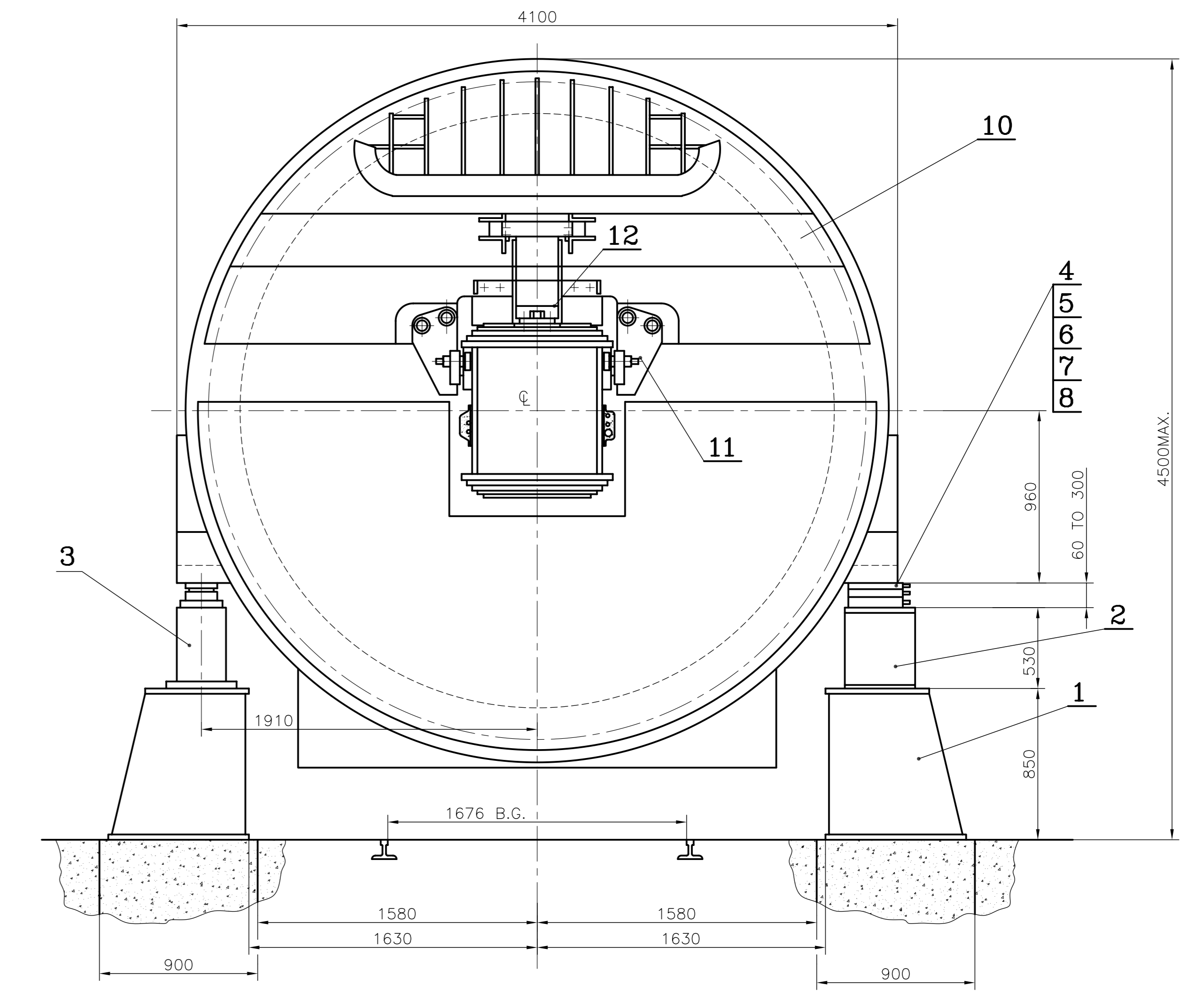
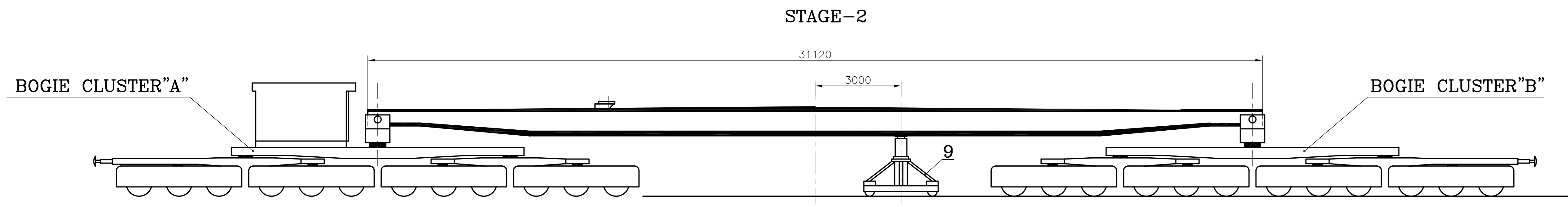
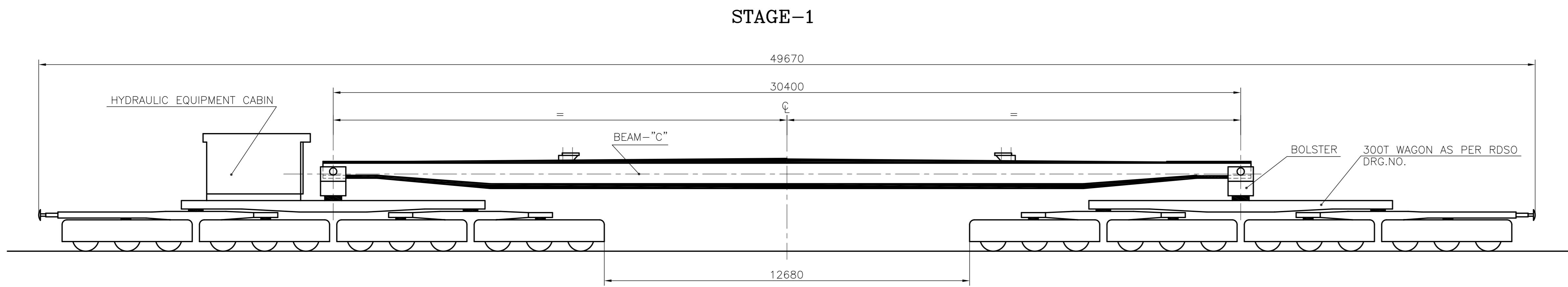
Chapter-IX: UNPRICED RATE SCHEDULE

Sl. No	Description of work	UNIT	TOTAL Lump sump Price in Indian Rupees (except Service Tax) (Both in Figures & Words)
1	LUMPSUM PRICE for Unloading of 2 no 500 MW TG Stator from BHEL's special wagon at railway siding inside Anpara D plant , about approximately 3 km from TG Hall of 2 x 500 MW Anpara D Project, loading the stator on hydraulic trailer, transportation of stator to TG Hall & unloading in front of TG hall of U# 6 & 7 of 2x500 MW Anpara D TPS Project, Uttar pradesh, including Fabrication of Bottom pedestal (4 Nos), Aux pedestal (4 Nos), Hydraulic Trolley (1 No), road transport fixture/saddles(4 nos) other items/T&Ps indicated in Chapter III of TCC, etc as per specification and terms and conditions of tender Specification	LS	
	<u>GRAND TOTAL</u>	Rs.	

NOTE:

1. The quoted rate/ price shall include all charges like unloading of TG stator from BHEL's special wagon, loading the same on hydraulic trailer, transportation charges (except necessary road civil work), supervision for unloading **including Fabrication of Bottom pedestal (4 Nos), Aux pedestal (4 Nos), Trolley (1 No), Fixture for road transport (04 Nos)Other T&Ps, items indicated in Chapter III etc**, any other incidental expenditure incurred related to above work. No demurrages etc, whatsoever are payable to the contractor.
2. The rate shall be mentioned in figures and in words. In case of difference in rates between words and figures, **THE LESSER OF THE TWO** will be treated as valid rate.
3. Incomplete offer received may not be considered for subject work.

(Signature and seal of authorized representative of the contractor)



- 1. GROSS WEIGHT OF WAGON = 187.8T
- PAY LOAD (WT. OF TG STATOR) = 258.0T
- 2. AXLE LOAD = 18.57T
- 3. MAXIMUM LOAD ON EACH PEDESTAL = 125.0T
- ACTUAL LOADING AREA = 1.6 M²
- 4. ϕ LOCATION OF RAIL TRACK w.r.t. A ROW (REF. NTPC DRG. PE-DG-200-100-M201) = 4500 MM

LIST OF ITEMS

ITEM NO.	DESCRIPTION	QTY.	UNIT WT. IN KGS
1	BOTTOM PDEASTAL	4	1305
2	AUXILIARY PDEASTAL	4	260
3	175T HYDRAULIC JACK	4	250
4	SHIM 260X150X0.5	AS REQD	0.15
5	SHIM 260X150X3.15	"	0.96
6	SHIM 260X150X6	"	1.22
7	SHIM 260X150X10	"	3.04
8	SHIM	16	11.7
9	HYDRAULIC TROLLEY	1	3500
10	CARRIER END SHIELD	2	4260
11	STOPPER SUPPORT	2	141
12	ROLLER BLOCK	4	91.3
13	SUPPORT BEAM	2	18.3

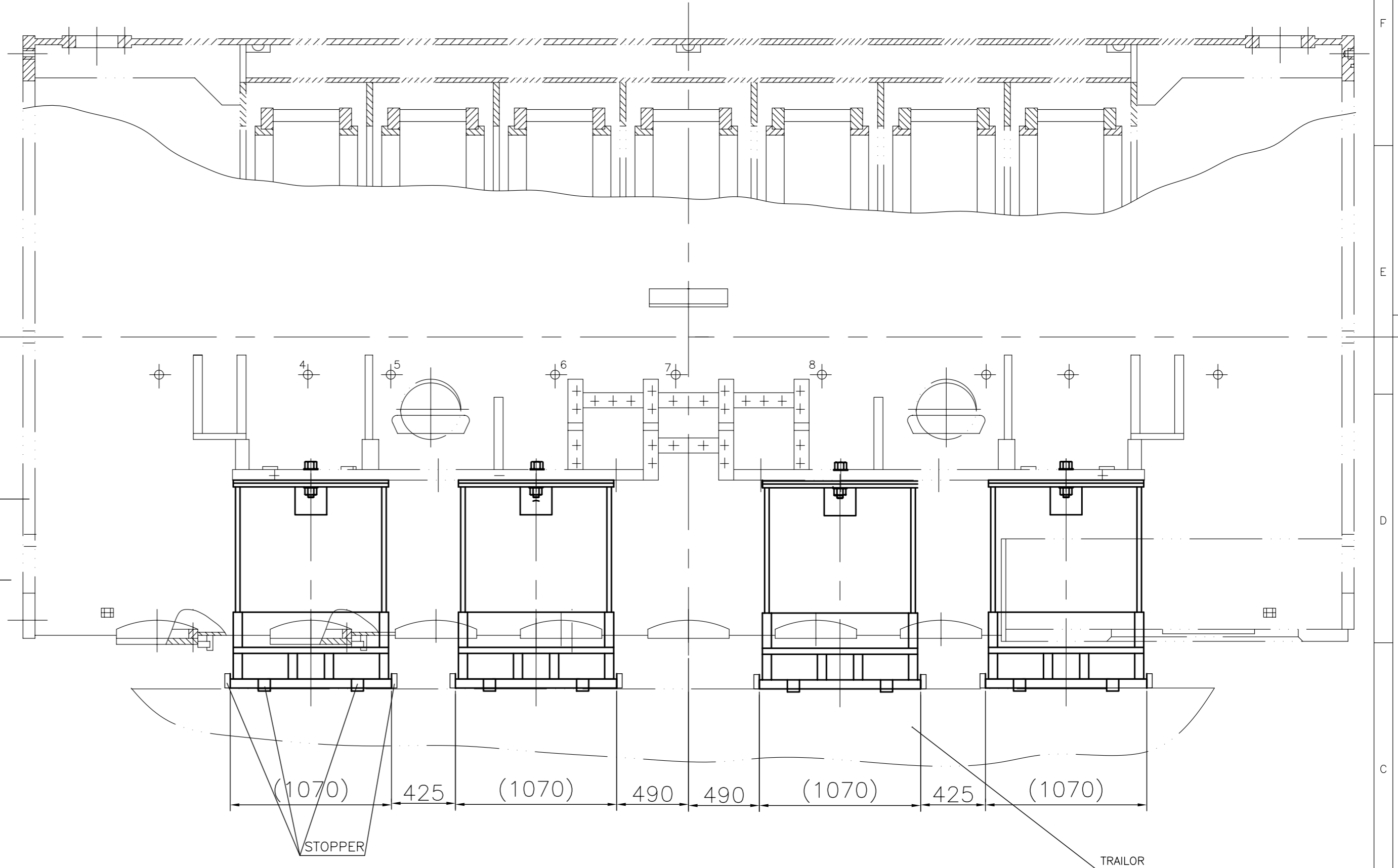
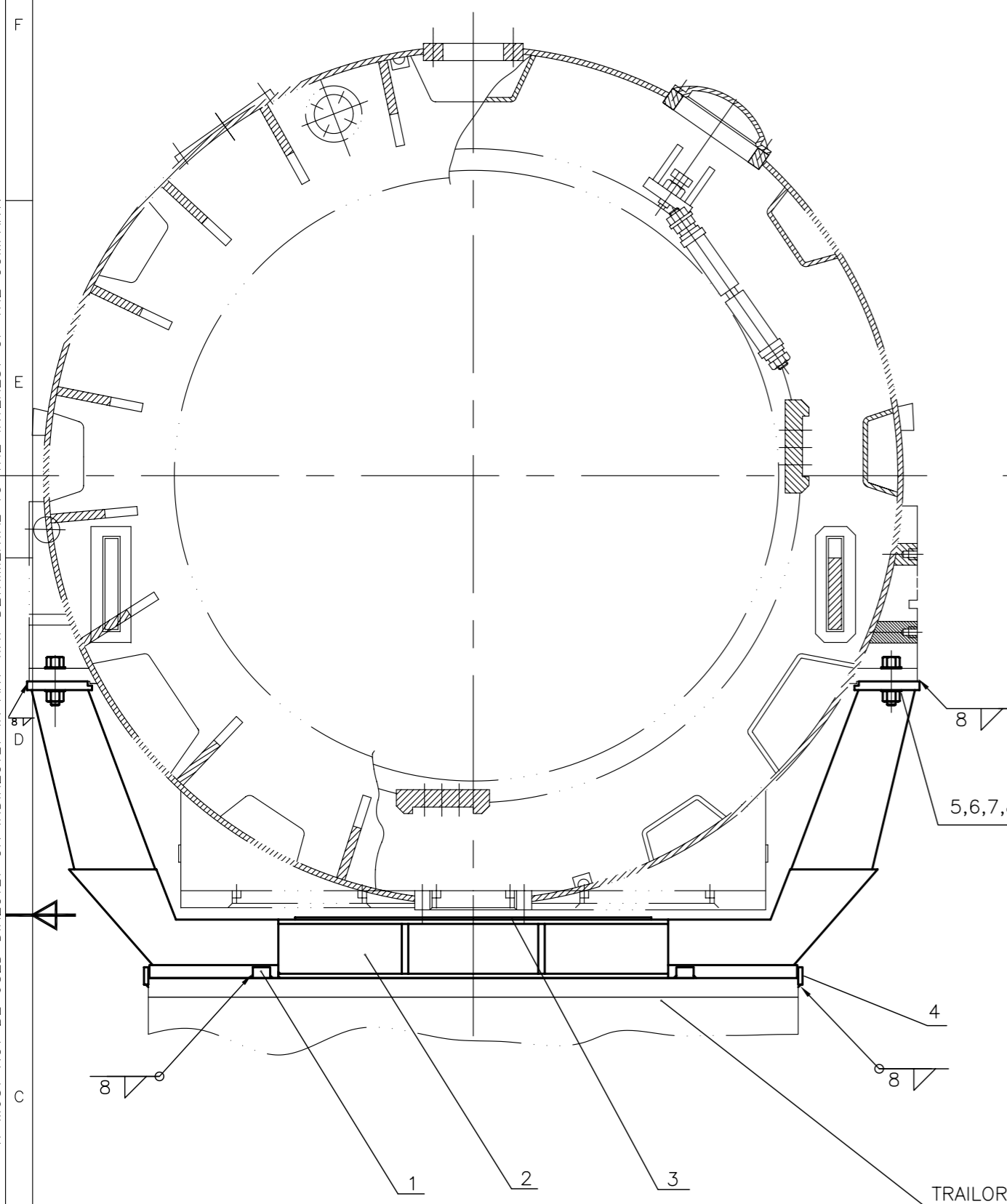
GRADE OF UNTOLDIM	M/CC - G/M/F AA0230208	WELDING - A/B/E/B AA0621104	GAS CUTTING - T3'AA0621101
DEPT TGE	SCALE 1:75	WEIGHT (KG)	REF. TO ASSY. DRG.
CODE 4133			
TITLE: STATOR LOADING AND UNLOADING WITH 300T SPL WAGON DRAWING NO: 0-139-38-01022C SHEET No. 01 No. OF SHEETS 01			

THE INFORMATION ON THIS DOCUMENT IS THE PROPERTY OF BHARAT HEAVY ELECTRICALS LIMITED. IT MUST NOT BE USED DIRECTLY OR INDIRECTLY IN ANY WAY DETRIMENTAL TO THE INTEREST OF THE COMPANY.

02010-8E-6E1-2
DRAWING NO. 2-139-38-01070

7 6 5 4 3 2 1

COPYRIGHT AND CONFIDENTIAL
THE INFORMATION ON THIS DOCUMENT IS THE PROPERTY OF BHARAT HEAVY ELECTRICALS LIMITED
IT MUST NOT BE USED DIRECTLY OR INDIRECTLY IN ANY WAY DETRIMENTAL TO THE INTEREST OF THE COMPANY.



TECHNICAL REQUIREMENTS

1. IDENTIFICATION ACCORDING TO HW0400397.
2. THE TRAILOR PLATFORM MUST BE CONTINUOUS AND CAPABLE OF TAKING LOADS NEAR EDGES OF ITS WIDTH.
3. THE TRAILOR PLATFORM MUST HAVE A WIDTH MORE THAN 2990 MM.
4. FOR UNIFORM LOADING STEEL SHIMS ITEM 8 TO BE USED FOR LEVELLING.

ITEM	DESCRIPTION &	QTY.
1	PLATE 50X80X80	8 Nos.
2	FIXTURE FOR ROAD TRANSPORT	4 Nos.
3	RUBBER SHEET 5X1000X1600	8 Nos.
4	PLATE 40X100X100	16 Nos.
5	SCRU HEX.	8 Nos.
6	WASHER	16 Nos.
7	NUT HEX.	8 Nos.
8	SHIM 0.5X400X250	4 Nos.

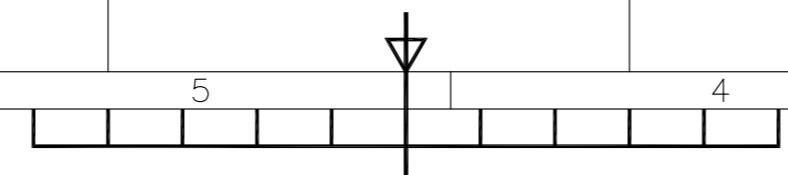
GRADE OF UNTOL. DIM.:-		REV. DATE ALTERED PNM sd/-	
M/GG-V/G/M/F-AA-0230208		01 14.1.03 CHECKED KN sd/-	
WELDING-A/B/C/D-AA621104		CHANGES AS PER CHANGE ADVICE	
GAS CUTTING-T3'AA0621101		NO.TGE-2003-F-134	

CBOM NO. 21393801070		STATUS OF DRG.	
AGREED DEPT.	NAME	SIGN	DATE
EMT	KOHLI	SD/-	11.1.2002

TYPE OF PRODUCT OR NAME OF CUSTOMER/ PROJECT		500MW TG			
--	--	----------	--	--	--

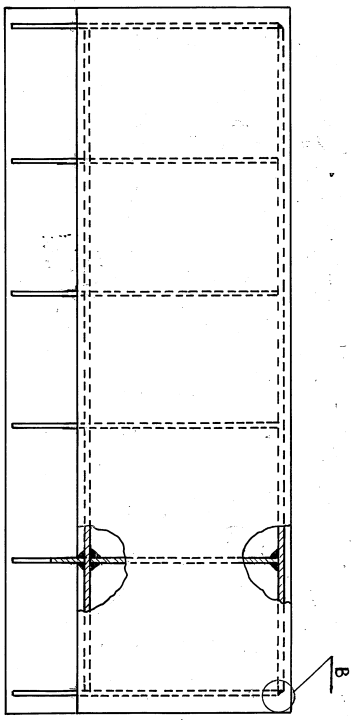
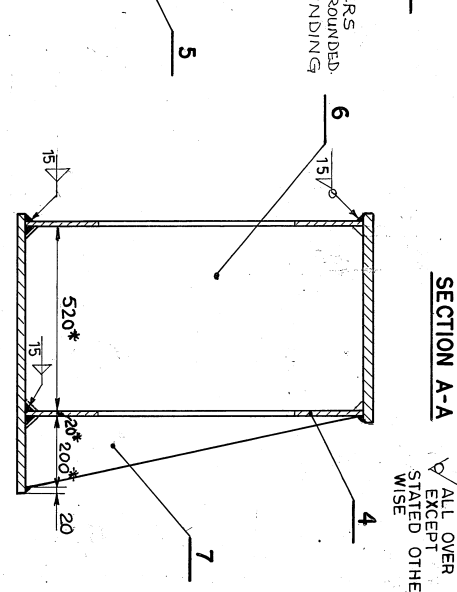
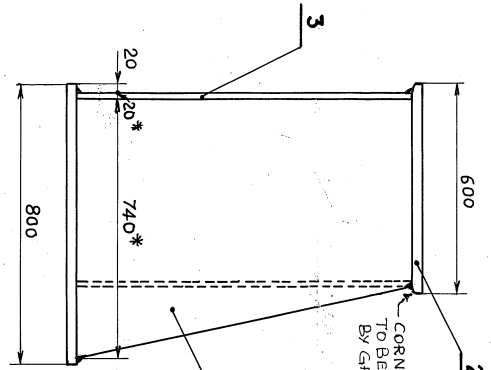
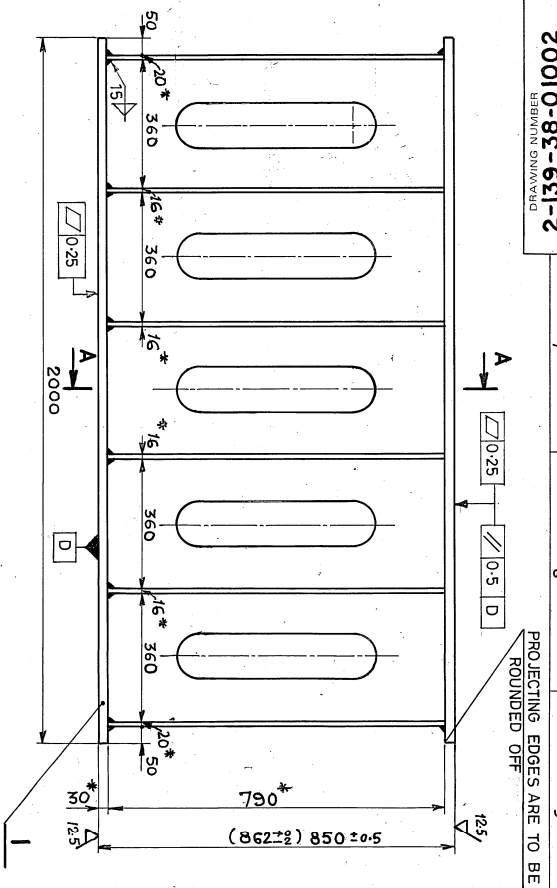
DEPT. TGE		SCALE 1:20	WEIGHT(Kg.) 18772	REF. TO ASSY. DRG. -	ITEM NO. 75, 77
CODE 4133	TITLE		DRAWING NO. 2-139-38-01070		

TITLE		ARRANGEMENT FOR LOADING OF STATOR			
SHEET NO. 01		NO.OF SHEETS 01			



20010-82-631-2
REBBIJIN SHIVARAO

FIRST ANGLE PROJECTION (ALL DIMENSIONS ARE IN mm)



TECHNICAL REQUIREMENTS

1. MACHINING TO BE DONE AFTER COMPLETION OF WELDING AND STRESS RELIEVING.
2. TEST SCOPE OF WELDING AS PER STD. HW 0850.199. CLASS-3.
3. BOTTOM PEDESTAL TO BE PAINTED AS PER INSTRUCTION 0922.005 (BEFORE MACHINING).
4. DIMENSIONS GIVEN IN BRACKET CORRESPOND TO WELDED ASSEMBLY.
5. ALL WELD SEAMS SHALL BE OF SIZE 10/2 EXCEPT STATED OTHERWISE.
6. ALL PEDESTAL MUST BE OF EQUAL HEIGHT OF ONE PLANT ORDER.
7. DIMENSIONS MARKED * ARE GIVEN FOR REFERENCE ONLY.
8. ALL RIBS ITEM 6 MUST TOUCH TOP PLATE ITEM 2 FOR UNIFORM LOAD TRANSFER.

DETAIL B (WITH ITEM 2- REMOVED)

VAR 00	REMARKS	ITEM NO.	DESCRIPTION	DWG. NO.	VAR. MATERIAL SPECN	UNIT WTKG
-		008	DEPOSITED METAL	-	E-7018	5.14
004		007	RIB	4-139-38-01022	AA101808110	09.182
004		006	RIB	4-139-38-01021	AA101808110	51.111
002		005	RIB	4-139-38-01020	AA101819139	79.180
001		004	SIDE PLATE	3-139-38-01006	AA101819139	184.343
001		003	SIDE PLATE	3-139-38-01006	AA10119	185.087
001		002	TOP PLATE	-	AA101819180	282.600
001		001	BOTTOM PLATE	-	AA10119	376.800

CONS/GR NO.	STATUS OF DRG.	DATE
2-139-38-01002	ALTERED	25.12.18
1	CHECKED	25.12.18

REV.	DATE	ALTERED	CHECKED	ZONE
1	22/11/18	ASST. ENGR.	ENGR.	1
2	22/11/18	ASST. ENGR.	ENGR.	1

BHARAT HEAVY ELECTRICALS LTD.
RAIPUR - HARDWAR

BOTTOM PEDESTAL FOR T.G. STATOR

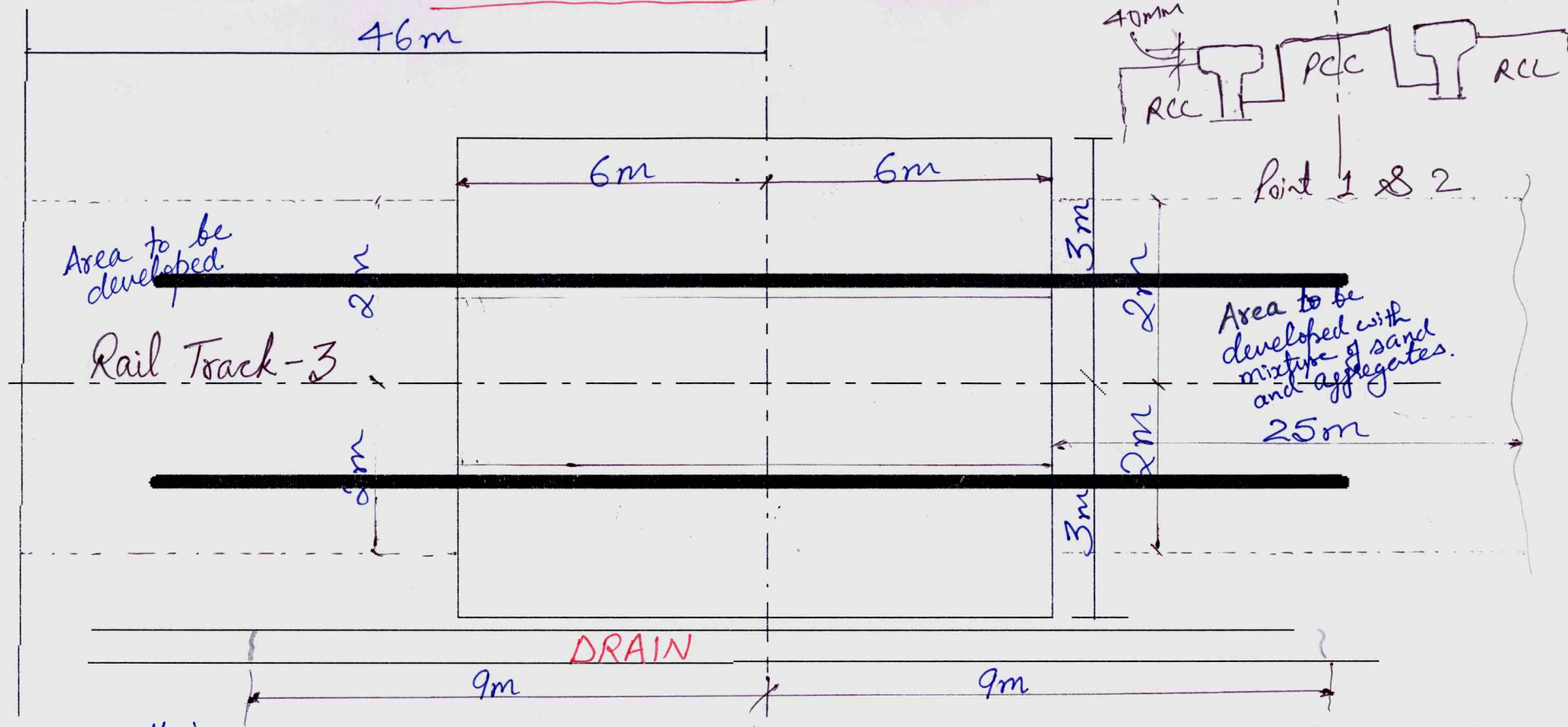
SCALE: 1:10
WEIGHT(KG): 1305.0

DRAWING NO: 2-139-38-01002
SHEET NO. 1

REV.	DATE	ALTERED	CHECKED	ZONE
1	22/11/18	ASST. ENGR.	ENGR.	1
2	22/11/18	ASST. ENGR.	ENGR.	1

STATOR UNLOADING - Civil work

ROAD



Trailer width - 2.8m (approx)

- Note: (1) PCC to be done between the rail tracks by allowing wheel spigot space with angle
 (2) RCC to be done outside rails both sides. Concrete should flush with the rails inside and 40mm down outside as shown in the figure.
 (3) Drain line in that area extended by 3mtrs both side to be filled with sand after placing pipes / liners to allow drainage and should be well compacted.

- (4) Pipe lying across the drain which are covered to be shifted
 (5) Area to be developed for trailer movement from road