



BHARAT HEAVY ELECTRICALS LIMITED

HEEP HARIDWAR INDIA-PIN 249403

FAX NO: 0091 1334 226462

PHONE NO: 01334 285076

REQUIREMENT OF PLATE & TERMINAL BOARD (ANNEXURE-1)

The Heavy Electricals Equipment Plant (HEEP) located in Haridwar, India is one of the major manufacturing plants of Bharat Heavy Electricals Ltd. The core business of HEEP includes design and manufacture of large steam and gas turbines, turbo generators, Defense Items and so on.

Details of items details as below:

SLN	MAT CODE	ITEM DISCREPTION	QUANTITY	UOM	Delivery Schedule (Days)
1	W97055201101	TERMINAL BOARD 38TB10B OF KULKA OR EQUIVALENT	24	Number	45
2	W97053501035	ELECTRICAL TERMINAL MARKING STRIP MS37TB-10-XXXBLACK 1A OF KULKA OR EQUIVALENT	19	Number	45
3	W97053501086	PLATE MS 37TB XXX PFR14 01X OF KULKA OR EQUIVALENT	36	Number	45
4	W97053501094	PLATE MS 38TB XXX PFR 20 01X N.STD: KULKA MAKE OR EQUIVALENT	24	Number	45
5	W97053501108	ELECTRICAL TERMINAL MARKING STRIP MS38TB-10-XXXPFR-1A; OR MS38TB-10-XXXPBLACK-1A OF KULKA-MARATHON OR EQUIVALENT	24	Number	45
6	W97053501116	ELECTRICAL TERMINAL MARKING STRIP MS603-10-XXXPBLACK-1A; OR MS603-10-XXXPFR-1A OF KULKA-MARATHON OR EQUIVALENT N.STD: KULKA MAKE	12	Number	45
7	W97053501124	PLATE MS 37TB XXX PFR 17 01X N.STD: KULKA MAKE OR EQUIVALENT	72	Number	45
8	W97053501140	ELECTRICAL TERMINAL MARKING STRIP MS38TB-16-XXXPBLACK-1A; OR MS38TB-16-XXXPFR-1A OF KULKA-MARATHON OR EQUIVALENT	67	Number	45
9	W97053501175	CABLE TIE MOUNT AM2 (AM2-C OR AM2-M) OF PANDUIT OR EQUIVALENT	1500	Number	45
10	W97055001013	ELECTRICAL SHIELD TAPE, ALL METAL, OPEN WEAVE KNIT, MADE OF TWO NO.36 AWG TINNED COPPER WIRES. TAPE WIDTH=1 INCH, L= 4.5 METER, THICKNESS=400 MICRON MODEL SCOTCH 24 OF 3M OR EQUIVALENT	52	Number	45
11	W97055102049	TERM, CRIMP MS25036-102	14000	Number	45

12	W97055201080	TERMINAL BOARD 37TB14B OF KULKA OR EQUIVALENT	36	Number	45
13	W97055201128	TERMINAL BOARD 37TB17B OF KULKA OR EQUIVALENT	72	Number	45
14	W97055201136	TERMINAL BOARD 37TB19B OF KULKA OR EQUIVALENT	24	Number	45
15	W97055101018	TERM, CRIMP MS17143-15 N.STD:MS17143	100	Number	45
16	W97055102138	TERM, CRIMP MS25036-109 N.STD:MS25036	300	Number	45
17	W97055102146	TERM, CRIMP MS25036-156	300	Number	45
18	W97055201098	TERMINAL BOARD 38TB20B N.STD: KULKA MAKE OR EQUIVALENT	24	Number	45
19	W97055201187	TERMINAL BOARD AS PER MIL-T-55164/1, CLASS 37TB-3; MODEL K 503 A OF RHODEX OR EQUIVALENT	20	Number	45

1. ALL VENDORS TO PROVIDE POINT WISE REPLY/CONFIRMATION ALONG WITH RELEVANT SUPPORTING DOCUMENTS TO EACH AND EVERY POINT OF **PRE-QUALIFICATION REQUIREMENT/PQR** FOR ALL ENQUIRY ITEMS. NONCOMPLIANCE OF THESE MAY LEAD TO REJECTION OF OFFER AS THESE ARE ESSENTIAL CONDITION FOR PARTICIPATING IN TENDER ENQUIRY.
2. KINDLY UPLOAD/ATTACH THE SPECIFICATION DETAILS/ CATALOGUE OF OFFERED ITEMS.
3. EARLY DELIVERY IS ACCEPTABLE.
4. KINDLY SUBMIT **TECHNO-COMMERCIAL CHECKLIST** ALONG WITH YOUR OFFER.
5. KINDLY SUBMIT **TECHNICAL PARAMETERS CHECK LIST** ALONG WITH YOUR OFFER.
6. KINDLY SUBMIT MAKE IN INDIA CERTIFICATE AS PER ATTACHED FORMAT ONLY.
7. VENDOR TO CONFIRM TO PROVIDE TEST CERTIFICATES AS PER SPECIFIED MANUFACTURER'S STANDARD PRACTICE INCLUDING DOCUMENTS CONFORMING TO ENQUIRY MAKE/MODEL/PART NO. ALONG WITH THE MATERIAL.
8. IN CASE OF EQUIVALENTS, VENDOR TO CONFIRM TO PROVIDE ORIGINAL MANUFACTURER'S TEST CERTIFICATES/DOCUMENTS OF MATERIALS CONFORMING ENQUIRY TECHNICAL REQUIREMENT.
9. VENDOR TO CONFIRM TO PROVIDE CERTIFICATE OF CONFORMANCE.
10. VENDOR TO CONFIRM TO PROVIDE IDENTIFICATION OF ALL ITEMS AND SUBSEQUENT IDENTIFICATION REPORTS.

QUALIFYING CONDITIONS FOR TERMINAL BOARD, TERMINAL CRIMP, TERMINAL PLATES, BRIDGE, SHIELD TAPE ETC.

Sl.	PQR Requirement	Vendor's Action	Vendor's Response (Yes / No / Remarks, if any)
1.	<p>a) Vendor who has supplied terminal boards, terminal plates, terminal crimps, shielding tapes or other electrical items to defense establishments like OFB, ISRO, HAL, BEL, BHEL-DABG etc.</p> <p>Vendor to submit experience of supply of items to defense establishments. Documents like Unpriced PO copy, dispatch docs etc to be submitted.</p>	Vendor to confirm & submit	
	b) There shall be no pending rejections of the supplied PO.	Vendor to confirm	
2.	Who can supply military grade items as per BHEL requirements.	Vendor to confirm	
3.	BHEL reserves the right to verify information submitted by vendor. In case the information is found to be false/incorrect, the offer shall be rejected. Vendor to accept & confirm.	Vendor to accept/ confirm	
4.	Point numbers 1 to 3 are the Mandatory Qualification Requirements. Offers of vendors not meeting these requirements will NOT be considered.	Vendor to confirm	

AGM/DPE

ENG.CHECK LIST (Ref. PQR2023-24-127)
ELECTRICAL TERMINAL BOARDS, TERMINAL MARKING STRIPS/PLATES & TERMINAL CRIMPS

A)	Requirement	Vendor's Confirmation (Yes/No)
1	Vendor to confirm to provide OEM or Authorized Dealer/Distributor Certificate of Conformance (OEM/AD-COC) or Traceability along with the supplies.	
2	Vendor to confirm that the items have been offered fully complying to BHEL's requirements.	

B)	Vendor to fill the details for following items (Refer separate technical sheet also).			
SN	BHEL Mat.Code	Item Description	Vendor to specify whether the offered item is same model no. as specified by BHEL in item description or any equivalent/ alternate.	Vendor to specify Make/Model number. (Vendor to submit product data sheet/catalogue also).
1	W97055201101	TERMINAL BOARD 38TB10B OF KULKA OR EQUIVALENT		
2	W97053501035	PLATE (ELECTRICAL TERMINAL MARKING PLATE/STRIP) TYPE MS37TB-10-XXXBLACK 1A OF KULKAOR EQUIVALENT		
3	W97053501086	PLATE (ELECTRICAL TERMINAL MARKING PLATE/STRIP) MS 37TB XXX PFR14 01A OF KULKAOR EQUIVALENT		
4	W97053501094	PLATE (ELECTRICAL TERMINAL MARKING PLATE/STRIP) MS 38TB XXX PFR 20 01A		
5	W97053501108	PLATE (ELECTRICAL TERMINAL MARKING PLATE/STRIP) MS 38TB XXX PFR 10 01A OF KULKA OR EQUIVALENT		
6	W97053501116	PLATE (ELECTRICAL TERMINAL MARKING PLATE/STRIP) MS 603 XXX PFR 10 01A		
7	W97053501124	PLATE (ELECTRICAL TERMINAL MARKING PLATE/STRIP) MS 37TB XXX PFR 17 01A		
8	W97053501140	PLATE (ELECTRICAL TERMINAL MARKING PLATE/STRIP) MS38TB-16-XXXPBLACK-1A OF KULKA OR EQUIVALENT		
9	W97053501175	Cable Tie Mount AM2 (AM2-C or AM2-M) OF PANDUIT OR EQUIVALENT		
10	W97055001013	ELECTRICAL SHIELD TAPE, ALL METAL, OPEN WEAVE KNIT, MADE OF TWO NO.36 AWG TINNED COPPER WIRES. TAPE WIDTH=1 INCH, L= 4.5 METER,THICKNESS=400 MICRON MODEL SCOTCH 24 OF 3M OR EQUIVALENT		
11	W97055102049	TERM, CRIMP MS25036-102		
12	W97055201080	TERMINAL BOARD 37TB14B OF KULKA OR EQUIVALENT		

B)	Vendor to fill the details for following items (Refer separate technical sheet also).			
SN	BHEL Mat.Code	Item Description	Vendor to specify whether the offered item is same model no. as specified by BHEL in item description or any equivalent/ alternate.	Vendor to specify Make/Model number. (Vendor to submit product data sheet/catalogue also).
13	W97055201128	TERMINAL BOARD 37TB17B OF KULKA OR EQUIVALENT		
14	W97055201136	TERMINAL BOARD 37TB19B OF KULKA OR EQUIVALENT		
15	W97055101018	TERM, CRIMP MS17143-15		
16	W97055102138	TERM, CRIMP MS25036-109		
17	W97055102146	TERM, CRIMP MS25036-156		
18	W97055201098	TERMINAL BOARD 38TB20B		
19	W97055201187	TERMINAL BOARD AS PER MIL-T-55164/1, CLASS 37TB-3; MODEL K 503 A OF RHODEX OR EQUIVALENT		

Note: Vendor to submit product catalogues/data sheet of the offered items against the above.

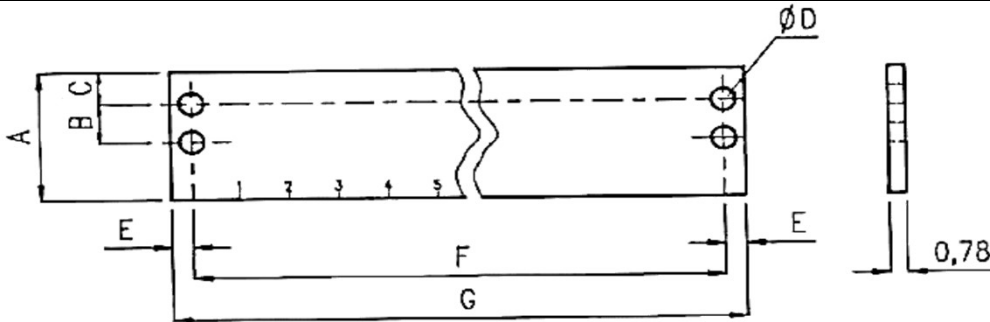
TECHNICAL PARAMETERS CHECK LIST
DATA VALUES TO BE FILLED AND CONFIRMED BY VENDOR

ITEM CODE: W97053501035

ITEM NAME: ELECTRICAL TERMINAL MARKING STRIP MS37TB-10-XXXBLACK 1A OF KULKA OR EQUIVALENT

ITEM PART NO: 880AC0030

NOTE: Vendor to input parameters based on the specification of the quoted item.



STD./SIZE	A (mm)	B (mm)	C (mm)	D (mm)	E (mm)	F (mm)	G (mm)
MS37	30.16	7.93	7.14	4.06	3.57	105.17	112.71

STRIP TYPE	SERIES	MATERIAL	FEED THROUGH (IF APPLICABLE)	NUMBER OF TERMINALS	PRINT STYLE
MS	37	XXXP or XXXPFR		10	01x/ 1A

↓
MARKING STRIP

↓
SIZE GIVEN ABOVE

↓
FLAME RETARDANT

↓
AS PER ABOVE SKETCH

SN.	PARAMETERS	VALUES	UNIT	RESPONSE TYPE		VENDOR RESPONSE
1	MILITARY GRADE MARKING STRIP MS MS37TB-10-XXXBLACK 1A , FOR TERMINAL BOX	AS PER ABOVE DETAILS	-	To confirm	→	
2	DIMENSIONS (A TO G)	AS PER ABOVE TABLE	-	To confirm	→	
3	TERMINAL NUMBER TO TERMINAL NUMBER DISTANCE.	9.5	mm	To confirm	→	
4	TERMINAL NUMBER MARKING IS CENTERED I.E. EQUAL SPACE IS AVAILABLE BEYOND TERMINAL NUMBER MARKING AT BOTH ENDS OF THE MARKING STRIP.	-	-	To confirm	→	
5	THICKNESS	AS PER ABOVE SKETCH		To confirm	→	
6	COLOUR	BLACK	-	To confirm	→	
7	PROPERTIES	INSULATING & FLAME RETARDANT	-	To confirm	→	
8	SUITABLE (MARKING) FOR NUMBER OF TERMINALS	10	-	To confirm	→	
9	PRINT STYLE	(1A) (AS PER ABOVE SKETCH)	-	To confirm	→	
10	MAKE OF OFFERED ITEM	-	-	To input	→	
11	MODEL NO. OF OFFERED ITEM	-	-	To input	→	

12. VENDOR REMARKS

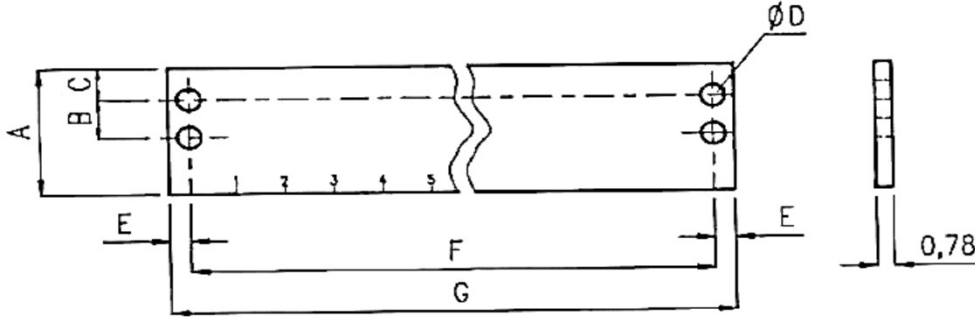
TECHNICAL PARAMETERS CHECK LIST
DATA VALUES TO BE FILLED AND CONFIRMED BY VENDOR

ITEM CODE: W97053501086

ITEM NAME: ELECTRICAL TERMINAL MARKING STRIP MS37TB-14-XXXPFR-1A; or MS37TB-14-XXXPBLACK-1A
of Kulka-Marathon OR EQUIVALENT

ITEM PART NO: 880AC0023

NOTE: Vendor to input parameters based on the specification of the quoted item.



STD./SIZE	A (mm)	B (mm)	C (mm)	D (mm)	E (mm)	F (mm)	G (mm)
MS37	30.16	7.93	7.14	4.06	3.57	143.27	150.81

STRIP TYPE	SERIES	MATERIAL	FEED THROUGH (IF APPLICABLE)	NUMBER OF TERMINALS	PRINT STYLE
MS	37	XXXP or XXXPFR		14	01x/ 1A
↓ MARKING STRIP	↓ SIZE GIVEN ABOVE	↓ FLAME RETARDANT			↓ AS PER ABOVE SKETCH

SN.	PARAMETERS	VALUES	UNIT	RESPONSE TYPE	VENDOR RESPONSE
1	MILITARY GRADE MARKING STRIP MS37TB-14-XXXPFR-1A , FOR TERMINAL BOX	AS PER ABOVE DETAILS	-	To confirm →	
2	DIMENSIONS (A TO G)	AS PER ABOVE TABLE	-	To confirm →	
3	TERMINAL NUMBER TO TERMINAL NUMBER DISTANCE.	9.5	mm	To confirm →	
4	TERMINAL NUMBER MARKING IS CENTERED I.E. EQUAL SPACE IS AVAILABLE BEYOND TERMINAL NUMBER MARKING AT BOTH ENDS OF THE MARKING STRIP.	-	-	To confirm →	
5	THICKNESS	AS PER ABOVE SKETCH		To confirm →	
6	COLOUR	BLACK	-	To confirm →	
7	PROPERTIES	INSULATING & FLAME RETARDANT	-	To confirm →	
8	SUITABLE (MARKING) FOR NUMBER OF TERMINALS	14	-	To confirm →	
9	PRINT STYLE	(1A) (AS PER ABOVE SKETCH)	-	To confirm →	
10	MAKE OF OFFERED ITEM	-	-	To input →	
11	MODEL NO. OF OFFERED ITEM	-	-	To input →	

12. VENDOR REMARKS

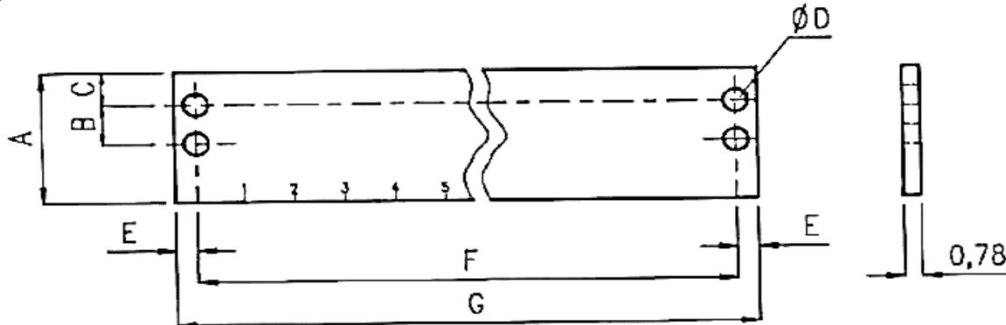
TECHNICAL PARAMETERS CHECK LIST
DATA VALUES TO BE FILLED AND CONFIRMED BY VENDOR

ITEM CODE: W97053501094

ITEM NAME: ELECTRICAL TERMINAL MARKING STRIP MS 38TB XXX PFR 20 01A

ITEM PART NO: 880AC0071

NOTE: Vendor to input parameters based on the specification of the quoted item.



STD./SIZE	A (mm)	B (mm)	C (mm)	D (mm)	E (mm)	F (mm)	G (mm)
MS38	38.1	10.71	8.73	4.44	3.96	234.15	242.49

STRIP TYPE	SERIES	MATERIAL	FEED THROUGH (IF APPLICABLE)	NUMBER OF TERMINALS	PRINT STYLE
MS	38	XXXP or XXXPFR		20	01X/ 1A
↓ MARKING STRIP	↓ SIZE GIVEN ABOVE FOR MS38	↓ FLAME RETARDANT			↓ AS PER ABOVE SKETCH

SN.	PARAMETERS	VALUES	UNIT	RESPONSE TYPE	VENDOR RESPONSE
1	ELECTRICAL TERMINAL MARKING STRIP MS 38TB XXX PFR 20 01A	AS PER ABOVE DETAILS	-	To confirm →	
2	DIMENSIONS (A TO G)	AS PER ABOVE TABLE	-	To confirm →	
3	THICKNESS	AS PER ABOVE SKETCH		To confirm →	
4	TERMINAL NUMBER TO TERMINAL NUMBER DISTANCE.	11.1	mm	To confirm →	
5	TERMINAL NUMBER MARKING IS CENTERED I.E. EQUAL SPACE IS AVAILABLE BEYOND TERMINAL NUMBER MARKING AT BOTH ENDS OF THE MARKING STRIP.	-	-	To confirm →	
6	COLOUR	BLACK	-	To confirm →	
7	PROPERTIES	INSULATING & FLAME RETARDANT	-	To confirm →	
8	SUITABLE (MARKING) FOR NUMBER OF TERMINALS	20	-	To confirm →	
9	PRINT STYLE	1A (AS PER ABOVE SKETCH)	-	To confirm →	
10	MAKE OF OFFERED ITEM	-	-	To input →	
11	MODEL NO. OF OFFERED ITEM	-	-	To input →	

12. VENDOR REMARKS

ITEM CODE:	W97053501108
ITEM NAME:	ELECTRICAL TERMINAL MARKING STRIP MS38TB-10-XXXPFR-1A; or MS38TB-10-XXXPBLACK-1A of Kulka-Marathon OR EQUIVALENT
ITEM PART NO:	880AC0072

Technical drawing of a mechanical part. The main view shows a cylindrical component with a central hole of diameter ϕD . The total length is G . The distance from the left end to the center of the hole is F . The distance from the right end to the center of the hole is E . The distance from the left end to the start of the hole is A . The distance from the start of the hole to the center of the hole is B . The distance from the center of the hole to the right end is C . The distance from the center of the hole to the right end is D . The distance from the center of the hole to the right end is E . The distance from the center of the hole to the right end is F . The distance from the center of the hole to the right end is G . A cross-section view on the right shows a rectangular profile with a width of 0.78 .

STRIP TYPE	SERIES	MATERIAL	FEED THROUGH (IF APPLICABLE)	NUMBER OF TERMINALS	PRINT STYLE
MS	38	XXXP or XXXPFR		10	1A

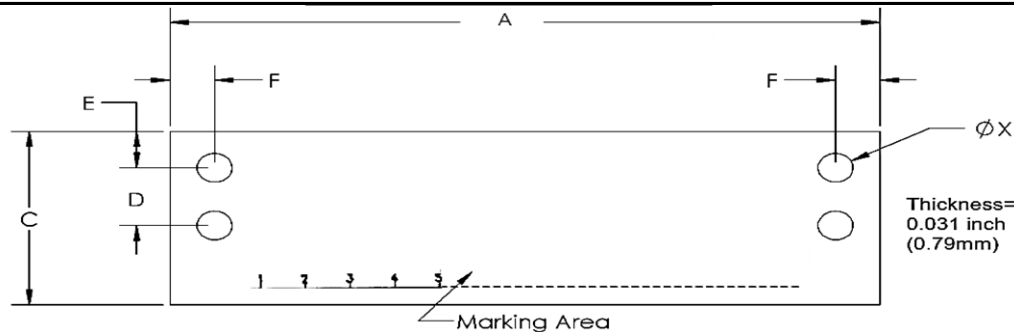
SN.	PARAMETERS	VALUES	UNIT	RESPONSE TYPE		VENDOR RESPONSE
1	MILITARY GRADE MARKING STRIP MS38TB-10-XXXPFR-1A	AS PER ABOVE DETAILS	-	To confirm	➔	
2	DIMENSIONS (A TO G)	AS PER ABOVE TABLE	-	To confirm	➔	
3	THICKNESS	AS PER ABOVE SKETCH		To confirm	➔	
4	TERMINAL NUMBER TO TERMINAL NUMBER DISTANCE.	11.1	mm	To confirm	➔	
5	TERMINAL NUMBER MARKING IS CENTERED I.E. EQUAL SPACE IS AVAILABLE BEYOND TERMINAL NUMBER MARKING AT BOTH ENDS OF THE MARKING STRIP.	-	-	To confirm	➔	
6	COLOUR	BLACK	-	To confirm	➔	
7	PROPERTIES	INSULATING & FLAME RETARDANT	-	To confirm	➔	
8	SUITABLE (MARKING) FOR NUMBER OF TERMINALS	10	-	To confirm	➔	
9	PRINT STYLE	1A (AS PER ABOVE SKETCH)	-	To confirm	➔	
10	MAKE OF OFFERED ITEM	-	-	To input	➔	
11	MODEL NO. OF OFFERED ITEM	-	-	To input	➔	

6 of 10

TECHNICAL PARAMETERS CHECK LIST

ITEM CODE: W97053501116
 ITEM NAME: ELECTRICAL TERMINAL MARKING STRIP MS603-10-XXXPFR-1A ;
 or MS603-10-XXXPBLACK-1A OF KULKA OR EQUIVALENT
 ITEM PART NO: 880AC0073

NOTE: Vendor to input parameters based on the specification of the quoted item.



STD./SIZE	A	C	D	E	F	X (Hole Dia)	Text Height
MS603	inch 8	1.88	0.63	0.59	0.22	0.23	0.13
	mm 203.2	47.8	16.0	15.0	5.6	5.8	3.3

STRIP TYPE	SERIES	MATERIAL	FEED THROUGH (IF APPLICABLE)	NUMBER OF TERMINALS	PRINT STYLE
MS	603	XXXP or XXXPFR		10	1A (Printed 1,2,3... upto number of terminal)

↓
MARKING STRIP

↓
SIZE GIVEN ABOVE FOR MS603

↓
FLAME RESISTANT (UL 94HB PAPER/PHENOLIC RESIN. LAMINATE).

↓
AS PER ABOVE SKETCH

SN.	PARAMETERS	VALUES	UNIT	RESPONSE TYPE		VENDOR RESPONSE
1	MILITARY GRADE TERMINAL MARKING STRIP MS603-10-XXXPFR-1A	AS PER ABOVE DETAILS	-	To confirm	→	
2	DIMENSIONS	AS PER ABOVE TABLE	-	To confirm	→	
3	THICKNESS	AS PER ABOVE SKETCH		To confirm	→	
4	TERMINAL NUMBER TO TERMINAL NUMBER DISTANCE.	17.4	mm	To confirm	→	
5	TERMINAL NUMBER MARKING IS CENTERED I.E. EQUAL SPACE IS AVAILABLE BEYOND TERMINAL NUMBER MARKING AT BOTH ENDS OF THE MARKING STRIP.	-	-	To confirm	→	
6	COLOUR	BLACK	-	To confirm	→	
7	PROPERTIES	INSULATING & FLAME RESISTANT (UL 94HB PAPER/PHENOLIC RESIN. LAMINATE)	-	To confirm	→	
8	SUITABLE (MARKING) FOR NUMBER OF TERMINALS	10	-	To confirm	→	
9	PRINT STYLE	1A (AS PER ABOVE SKETCH)	-	To confirm	→	
10	MAKE OF OFFERED ITEM	-	-	To input	→	
11	MODEL NO. OF OFFERED ITEM	-	-	To input	→	

12. VENDOR REMARKS

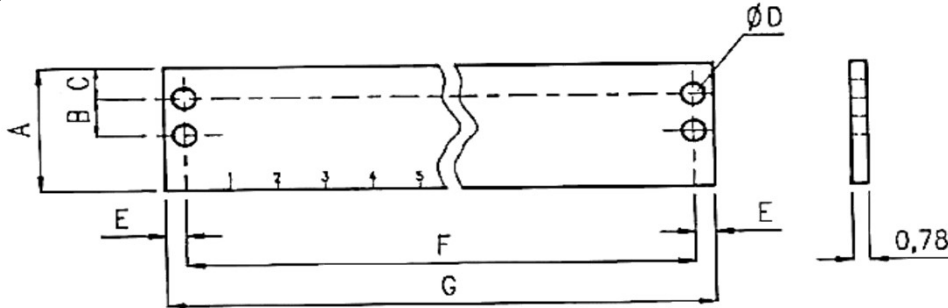
TECHNICAL PARAMETERS CHECK LIST
DATA VALUES TO BE FILLED AND CONFIRMED BY VENDOR

ITEM CODE: W97053501124

ITEM NAME: ELECTRICAL TERMINAL MARKING STRIP MS 37TB XXX PFR 17 01A

ITEM PART NO: 880AC0074

NOTE: Vendor to input parameters based on the specification of the quoted item.



STD./SIZE	A (mm)	B (mm)	C (mm)	D (mm)	E (mm)	F (mm)	G (mm)
MS37	30.16	7.93	7.14	4.06	3.57	170.662- 172.643	177.8- 180.568

STRIP TYPE	SERIES	MATERIAL	FEED THROUGH (IF APPLICABLE)	NUMBER OF TERMINALS	PRINT STYLE
MS	37	XXXP or XXXPFR		17	01x/ 1A

↓
MARKING STRIP

↓
SIZE GIVEN ABOVE

↓
FLAME RETARDANT

↓
AS PER ABOVE SKETCH

SN.	PARAMETERS	VALUES	UNIT	RESPONSE TYPE		VENDOR RESPONSE
1	MILITARY GRADE MARKING STRIP MS 37TB XXX PFR 17 01A	AS PER ABOVE DETAILS	-	To confirm	→	
2	DIMENSIONS (A TO G)	AS PER ABOVE TABLE	-	To confirm	→	
3	TERMINAL NUMBER TO TERMINAL NUMBER DISTANCE.	9.5	mm	To confirm	→	
4	TERMINAL NUMBER MARKING IS CENTERED I.E. EQUAL SPACE IS AVAILABLE BEYOND TERMINAL NUMBER MARKING AT BOTH ENDS OF THE MARKING STRIP.	-	-	To confirm	→	
5	THICKNESS	AS PER ABOVE SKETCH	-	To confirm	→	
6	COLOUR	BLACK	-	To confirm	→	
7	PROPERTIES	INSULATING & FLAME RETARDANT	-	To confirm	→	
8	SUITABLE (MARKING) FOR NUMBER OF TERMINALS	17	-	To confirm	→	
9	PRINT STYLE	1A (AS PER ABOVE SKETCH)	-	To confirm	→	
10	MAKE OF OFFERED ITEM	-	-	To input	→	
11	MODEL NO. OF OFFERED ITEM	-	-	To input	→	

12. VENDOR REMARKS

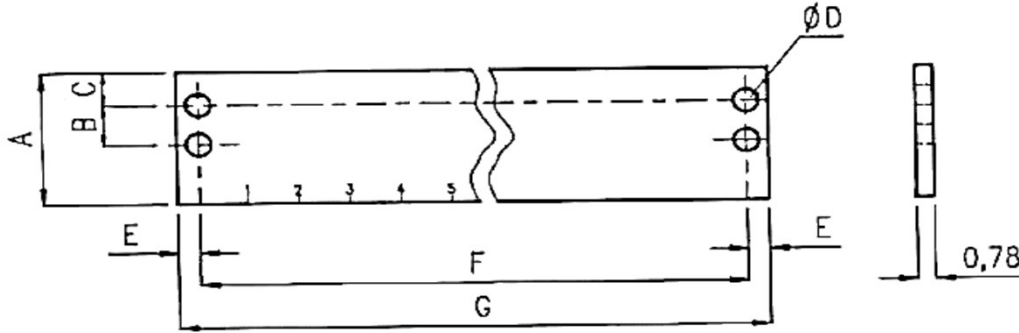
TECHNICAL PARAMETERS CHECK LIST
DATA VALUES TO BE FILLED AND CONFIRMED BY VENDOR

ITEM CODE: W97053501140

ITEM NAME: PLATE (MARKING STRIP FOR TERMINAL BOX) MS38TB-16-XXXBLACK-1A OF KULKA OR EQUIVALENT

ITEM PART NO: 880AC0078

NOTE: Vendor to input parameters based on the specification of the quoted item.



STD./SIZE	A (mm)	B (mm)	C (mm)	D (mm)	E (mm)	F (mm)	G (mm)
MS38	38.1	10.71	8.73	4.44	3.96	189.3	197.64

STRIP TYPE	SERIES	MATERIAL	FEED THROUGH (IF APPLICABLE)	NUMBER OF TERMINALS	PRINT STYLE
MS	38	XXXP or XXXPFR		16	1A

↓
MARKING STRIP

↓
SIZE GIVEN ABOVE FOR MS38

↓
FLAME RETARDANT

↓
AS PER ABOVE SKETCH

SN.	PARAMETERS	VALUES	UNIT	RESPONSE TYPE	VENDOR RESPONSE
1	MILITARY GRADE MARKING STRIP MS38TB-16-XXXBLACK-1A, FOR TERMINAL BOX	AS PER ABOVE DETAILS	-	To confirm	→
2	DIMENSIONS (A TO G)	AS PER ABOVE TABLE	-	To confirm	→
3	THICKNESS	AS PER ABOVE SKETCH			
4	TERMINAL NUMBER TO TERMINAL NUMBER DISTANCE.	11.1	mm	To confirm	→
5	TERMINAL NUMBER MARKING IS CENTERED I.E. EQUAL SPACE IS AVAILABLE BEYOND TERMINAL NUMBER MARKING AT BOTH ENDS OF THE MARKING STRIP.	-	-	To confirm	→
6	COLOUR	BLACK	-	To confirm	→
7	PROPERTIES	INSULATING & FLAME RETARDANT	-	To confirm	→
8	SUITABLE (MARKING) FOR NUMBER OF TERMINALS	16	-	To confirm	→
9	PRINT STYLE	1A (AS PER ABOVE SKETCH)	-	To confirm	→
10	MAKE OF OFFERED ITEM	-	-	To input	→
11	MODEL NO. OF OFFERED ITEM	-	-	To input	→

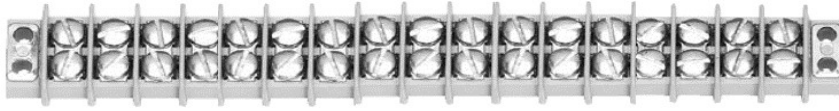
12. VENDOR REMARKS

TECHNICAL PARAMETERS CHECK LIST
DATA VALUES TO BE FILLED AND CONFIRMED BY VENDOR

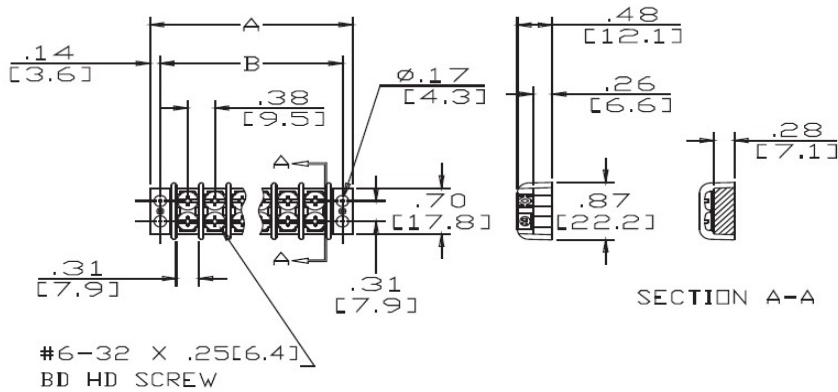
ITEM CODE: W97055201128

ITEM NAME: TERMINAL BOARD 37TB17B OF KULKA OR EQUIVALENT

ITEM PART NO: 880MO0036



Picture: For Reference Only



(Dimensions are in inches & [mm]. Dimension indicated in [] are in mm)

SN.	PARAMETERS	VALUES	UNIT	RESPONSE TYPE	VENDOR RESPONSE
1	Product Type	Terminal block, double row type	-	To confirm →	
2	Mil Spec	Mil-T-55164 / A-A59125	-	To confirm →	
3	Mounting	Panel Mount	-	To confirm →	
4	Termination Method:	Screw	-	To confirm →	
5	Dimension A	7.03	INCHES	To confirm →	
6	Dimension B	6.75	INCHES	To confirm →	
7	Number of Poles/Terminal	17	-	To confirm →	
8	Voltage Rating	300	Volt	To confirm →	
9	Current Rating	15	Amp	To confirm →	
10	Design Type	Closed Back Design	-	To confirm →	
11	Material	30% glass reinforced, flame resistant molding plastic - GPT30F as per MIL-M-24519	-	To confirm →	
12	Color	Grey	-	To confirm →	
13	Operating Temp	130	° C	To confirm →	
14	Screw Type	Brass Nickel Plate, 6-32 Binder Head, Slotted	-	To confirm →	
15	Terminals	Brass Nickel Plate	-	To confirm →	
16	Make of offered item	-	-	To input →	
17	Model no. of offered item	-	-	To input →	
18	VENDOR REMARKS:				

TECHNO-COMMERCIAL CHECKLIST		
SL. NO.	TERMS & CONDITION	VENDOR CONFIRMATION / REPLY/ SUBMIT
TENDER DETAILS		
1	BIDDER NAME	
2	GEM BID NO	
TECHNICAL & QUALITY REQUIREMENTS		
3	ALL VENDORS TO PROVIDE POINT WISE REPLY/CONFIRMATION ALONG WITH RELEVANT SUPPORTING DOCUMENTS TO EACH AND EVERY POINT OF PRE-QUALIFICATION REQUIREMENT/PQR FOR ALL ENQUIRY ITEMS. NONCOMPLIANCE OF THESE MAY LEAD TO REJECTION OF OFFER AS THESE ARE ESSENTIAL CONDITION FOR PARTICIPATING IN TENDER ENQUIRY.	
4	KINDLY UPLOAD/ATTACH THE SPECIFICATION DETAILS/ CATALOGUE OF OFFERED ITEMS.	
5	VENDOR TO CONFIRM TO PROVIDE TEST CERTIFICATES AS PER SPECIFIED MANUFACTURER'S STANDARD PRACTICE INCLUDING DOCUMENTS CONFORMING TO ENQUIRY MAKE/MODEL/PART NO. ALONG WITH THE MATERIAL.	
6	IN CASE OF EQUIVALENTS, VENDOR TO CONFIRM TO PROVIDE ORIGINAL MANUFACTURER'S TEST CERTIFICATES/DOCUMENTS OF MATERIALS CONFORMING ENQUIRY TECHNICAL REQUIREMENT.	
7	VENDOR TO CONFIRM TO PROVIDE CERTIFICATE OF CONFORMANCE.	
8	VENDOR TO CONFIRM TO PROVIDE IDENTIFICATION OF ALL ITEMS AND SUBSEQUENT IDENTIFICATION REPORTS.	
COMMERICAL REMARKS		
9	VENDOR TO CONFIRM TO SUPPLY ITEMS AS PER ENQUIRY SPECIFICATION/STANDARDS	
10	<p>BREACH OF CONTRACT CLAUSE:. In case of breach of contract, wherever the value of security instruments like performance bank guarantee available with BHEL against the said contract is 10% of the contract value or more, such security instruments to the extent of 10% contract value will be encashed. In case the value of the security instruments available is less than 10% of the contract value, the balance amount will be recovered in all or any of the following manners:</p> <ul style="list-style-type: none"> i. from dues available in the form of Bills payable to defaulted supplier against the same contract. ii. from the dues payable to defaulted supplier against other contracts in the same Region/Unit /any other region/unit iii. In-case recoveries are not possible with any of the above available options, Legal action shall be initiated for recovery against defaulted supplier. <p>Further, levy of liquidated damages, debarment, termination, de-scoping, short closure, etc., will be applied as per provisions of the contract.</p>	
11	<p>ACTION AGAINST BIDDERS / VENDOR / SUPPLIER / CONTRACTOR IN CASE OF DEFAULT:IN ORDER TO PROTECT THE COMMERCIAL INTERESTS OF BHEL, BHEL SHALL TAKE ACTION AGAINST SUPPLIES / CONTRACTORS BY WAY OF SUSPENSION OF BUSINESS DEALINGS, WHO EITHER FAIL TO PERFORM OR ARE IN DEFAULT WITHOUT ANY REASONABLE CAUSE, CAUSE LOSS OF BUSINESS/ MONEY/ REPUTATION, INDULGE IN MALPRACTICES, CHEATING, BRIBERY, FRAUD OR ANY OTHER MISCONDUCT OR FORMATION OF CARTELS SO AS TO INFLUENCE THE BIDDING PROCESS OR INFLUENCE THE PRICE ETC.SUSPENSION OF BUSINESS DEALINGS COULD BE IN THE FORM OF "HOLD" OR "BANNING" A SUPPLIER/ CONTRACTOR OR A BIDDER AND SHALL BE AS PER "GUIDELINES FOR SUSPENSION OF BUSINESS DEALINGS WITH SUPPLIERS/CONTRACTORS"AVAILABLEATBHEL'SWEBSITE https://www.bhel.com/guidelines-suspension-business-dealings-upplierscontractors</p>	

12	REST TERMS AND CONDITIONS AS PER GEM (LATEST VERSION- APPLICABLE AT THE TIME OF ISSUANCE OF ENQUIRY)	
----	--	--

MAKE IN INDIA SELF CERTIFICATION

As per Government Public procurement order no. P-45021/2/2017-BE-II dt.15.06.2017 & P45021/2/2017-PP(BE-II) dated 28.05.2018,29.5.2019, 04.6.2020 and amendment dated 16.09.2020, it is hereby certifying that we

.....
..... (supplier name) are(Class-I/Class-II)
local supplier and will meet the requirement of minimum local content of
(50%/20%) as defined in public procurement order dated 04.6.2020 for material against Enquiry no.
..... Details of
location at which local value addition will be made is as follows: -

.....
.....
.....

We also understand, false declarations will be in breach of the code of integrity under Rule 175(1)(i)(h) of the General Financial Rules for which a bidder or its successors can be debarred for up to two years as per Rule 151 (iii) of the general financial rules along with such other actions as may be permissible under law.

Note:

As per office order P-45021/102/2019-BE-II-Part (1) (E-50310) Dated 04/03/2021, Bidders can't claim itself as "Class-I local supplier/Class-II local suppliers" by claiming the service such as transportation, insurance, installation, commissioning, training & after sales service support like AMC/CMC etc. as local value addition. Bidder offering imported product will fall under the category of Non-Local supplier.

ADDITIONAL TERMS & CONDITIONS

1. GENERAL INSTRUCTIONS:

- EARLY DELIVERY IS ACCEPTABLE.
- VENDOR TO OFFER BEST DELIVERY SCHEDULE IN LINE WITH BHEL TENDER REQUIREMENT. DELIVERY IS NOT SACROSANCT. HOWEVER, OFFER OF VENDORS MAY NOT BE CONSIDERED WHOSE QUOTED DELIVERY DOES NOT MATCH WITH BHEL REQUIREMENT.

2. ITEM DETAILS-

AS PER ANNEXURE- 1

3. QUALITY REQUIREMENTS –

- VENDOR TO CONFIRM TO PROVIDE TEST CERTIFICATES AS PER SPECIFIED MANUFACTURER'S STANDARD PRACTICE INCLUDING DOCUMENTS CONFORMING TO ENQUIRY MAKE/MODEL/PART NO. ALONG WITH THE MATERIAL.
- IN CASE OF EQUIVALENTS, VENDOR TO CONFIRM TO PROVIDE ORIGINAL MANUFACTURER'S TEST CERTIFICATES/DOCUMENTS OF MATERIALS CONFORMING ENQUIRY TECHNICAL REQUIREMENT.
- VENDOR TO CONFIRM TO PROVIDE CERTIFICATE OF CONFORMANCE.
- VENDOR TO CONFIRM TO PROVIDE IDENTIFICATION OF ALL ITEMS AND SUBSEQUENT IDENTIFICATION REPORTS.

4. COMMERCIAL TERMS

- THE PRICE QUOTE BY BIDDER SHOULD BE INCLUSIVE OF GST & SHOULD BE ON BHEL HEEP HARIDWAR STORES BASIS.
- BIDDER TO ACCEPT ALL TERMS AND CONDITIONS AS PER GEM ENQUIRY AND GEM LATEST GTC.
- BIDDERS ARE ADVISED TO CHECK APPLICABLE GST ON THEIR OWN BEFORE QUOTING. BUYER WILL NOT TAKE ANY RESPONSIBILITY IN THIS REGARD. GST REIMBURSEMENT WILL BE AS PER ACTUALS OR AS PER APPLICABLE RATES (WHICHEVER IS LOWER), SUBJECT TO THE MAXIMUM OF QUOTED GST %.

5. WARRANTY TERMS

GOODS SHALL COMPLY WITH THE SPECIFICATIONS FOR MATERIAL, WORKMANSHIP AND PERFORMANCE. UNLESS OTHERWISE SPECIFIED, THE WARRANTY SHALL BE FOR A PERIOD OF **12 MONTHS** FROM THE DATE OF RECEIPT.

6. DIVISION BETWEEN MSE AND NON MSE L1 WILL BE AS BELOW:

IF PRICE QUOTED BY MSE VENDOR IS WITHIN THE PRICE BAND OF L1+15%, THEN 25% QUANTITY OF THE RESPECTIVE ITEM (ROUNDED OFF TO NEAREST NUMBER) SHALL BE OFFERED TO MSE VENDOR SUBJECT TO MATCHING THE L1 PRICES. IF THE QUANTITY REQUIRED IS 1 NUMBER (AS SUCH NON-DIVISIBLE), MSE QUOTING WITH IN PRICE PREFERENCE OF L1+15% SHALL BE OFFERED 100% QUANTITY SUBJECT TO MATCHING THE L1 PRICES.

7. MSE/MII: THE SUPPLIER NEEDS TO SUBMIT/UPDATE MSE/MII CREDENTIALS ON GEM PORTAL DURING PROFILE UPDATION/ OFFER SUBMISSION STAGE. THE MSE DATA SUBMITTED IS CROSS VERIFIED BY GEM WITH GOVT. OF INDIA UDYAM/NSIC DATABASE THROUGH API INTEGRATION ON REAL TIME BASIS AND FOR MII, A SELF DECLARATION IS BEING GIVEN AND AUTHENTICATED BY AADHAR OTP. IF THE SELLER FAILS TO CLAIM MSE/MII PROVISION ON GEM PORTAL AT PROFILE UPDATION/BID SUBMISSION STAGE, THE SAID SELLER WILL BECOME INELIGIBLE FOR GETTING THE MSE/MII BENEFITS FOR THAT BID AUTOMATICALLY. THE VENDOR CAN ALWAYS CONTACT THE GEM HELPDESK, IN CASE OF ANY ISSUES.

8. SUPPLIERS WHO HAVE QUALIFIED AND RECEIVED INCENTIVE UNDER PLI SCHEME WILL BE DEEMED CLASS-II LOCAL SUPPLIERS UNLESS THEY ARE ALREADY CLASS I LOCAL SUPPLIERS) TO ENCOURAGE INDIGENIZATION.

9. PENAL PROVISIONS FOR FALSE SELF DECLARATION OF MII, IN CASE OF CONTRACT MORE THAN RS 10 CRS.

FOR CONTRACTS VALUING MORE THAN RS 10 CRORES, LOCAL CONTENT (IN CASES OF SELF-CERTIFICATION SUBMITTED BY BIDDERS AT THE TIME OF TENDERING) WILL BE RE-VERIFIED DURING EXECUTION OF CONTRACT BY

COST/ CHARTERED ACCOUNTANT, AND IN CASE OF DEFAULTS, PENALTY UPTO 10% OF THE CONTRACT VALUE SHALL BE IMPOSED.

10. FOR THIS PROCUREMENT, THE LOCAL CONTENT TO CATEGORIZE A SUPPLIER AS A CLASS I LOCAL SUPPLIER/ CLASS II LOCAL SUPPLIER/ NON-LOCAL SUPPLIER AND PURCHASE PREFERENCE TO CLASS I LOCAL SUPPLIER, IS AS DEFINED IN PUBLIC PROCUREMENT (PREFERENCE TO MAKE IN INDIA), ORDER 2017 DATED 19.07.2024 ISSUED BY DPIIT. IN CASE OF SUBSEQUENT ORDERS ISSUED BY THE NODAL MINISTRY, CHANGING THE DEFINITION OF LOCAL CONTENT FOR THE ITEMS OF THE NIT, THE SAME SHALL BE APPLICABLE EVEN IF ISSUED AFTER ISSUE OF THIS NIT, BUT BEFORE OPENING OF PART-II BIDS AGAINST THIS NIT.

11. PAYMENT TERM:

- i. **FOR NON-MSME BIDDERS:** 100% PAYMENT ALONG WITH TAXES, FREIGHT & INSURANCE WILL BE MADE AFTER RECEIPT AND ACCEPTANCE OF MATERIAL AND WITHIN 90 DAYS FROM THE DATE OF RECEIPT SUBJECT TO SUBMISSION OF NON-DISCREPANT DOCUMENTS. (MSME MEANS MICRO, SMALL & MEDIUM ENTERPRISES) (THIS IS IN SUPERSESSION OF 10 DAYS' TIME AS PROVIDED IN CLAUSE 12 OF GEM GTC).
- ii. **FOR MSE BIDDER:** FOR MSES (COVERED UNDER MSME ACT), 100% PAYMENT ALONG WITH TAXES, FREIGHT & INSURANCE WILL BE MADE AFTER RECEIPT AND ACCEPTANCE OF MATERIAL AND WITHIN 45 DAYS FROM THE DATE OF RECEIPT SUBJECT TO SUBMISSION OF NON-DISCREPANT DOCUMENTS OR AS PRESCRIBED IN THE RELEVANT ACT. BENEFITS OF MSE (SUCH AS EMD WAIVER, TENDER FEE EXEMPTION, PRICE PREFERENCE, PAYMENT PREFERENCE ETC.) WILL BE GIVEN ONLY TO THOSE MSE VENDORS WHO ARE MANUFACTURERS OF OFFERED ITEMS AGAINST THE NIT. NO MSE BENEFITS SHALL BE PROVIDED TO AGENTS / STOCKISTS /DEALERS / TRADERS ETC. FOR THE ITEMS OFFERED BUT NOT MANUFACTURED BY THEMSELVES."
- iii. **FOR MEDIUM ENTERPRISES:** 100% PAYMENT ALONG WITH TAXES, FREIGHT & INSURANCE WILL BE MADE AFTER RECEIPT AND ACCEPTANCE OF MATERIAL AND WITHIN 60 DAYS FROM THE DATE OF RECEIPT SUBJECT TO SUBMISSION OF NON-DISCREPANT DOCUMENTS AS PER TERMS AND CONDITIONS OF PURCHASE ORDER.
- iv. PLEASE NOTE THAT VENDOR TO ADHERE TO THE PAYMENT TERMS AS PER ABOVE. NO DEVIATION IN PAYMENT TERMS SHALL BE ACCEPTED. VENDOR TO SUBMIT THEIR OFFER ACCORDINGLY.

12. CONFLICT OF INTEREST AMONG BIDDERS/ AGENTS

"A BIDDER SHALL NOT HAVE CONFLICT OF INTEREST WITH OTHER BIDDERS. SUCH CONFLICT OF INTEREST CAN LEAD TO ANTI-COMPETITIVE PRACTICES TO THE DETRIMENT OF PROCURING ENTITY'S INTERESTS. **THE BIDDER FOUND TO HAVE A CONFLICT OF INTEREST SHALL BE DISQUALIFIED.** A BIDDER MAY BE CONSIDERED TO HAVE A CONFLICT OF INTEREST WITH ONE OR MORE PARTIES IN THIS BIDDING PROCESS, IF:

- a) THEY HAVE CONTROLLING PARTNER (S) IN COMMON; **OR**
- b) THEY RECEIVE OR HAVE RECEIVED ANY DIRECT OR INDIRECT SUBSIDY/ FINANCIAL STAKE FROM ANY OF THEM; **OR**
- c) THEY HAVE THE SAME LEGAL REPRESENTATIVE/AGENT FOR PURPOSES OF THIS BID; **OR**
- d) THEY HAVE RELATIONSHIP WITH EACH OTHER, DIRECTLY OR THROUGH COMMON THIRD PARTIES, THAT PUTS THEM IN A POSITION TO HAVE ACCESS TO INFORMATION ABOUT OR INFLUENCE ON THE BID OF ANOTHER BIDDER; **OR**
- e) BIDDER PARTICIPATES IN MORE THAN ONE BID IN THIS BIDDING PROCESS. PARTICIPATION BY A BIDDER IN MORE THAN ONE BID WILL RESULT IN THE DISQUALIFICATION OF ALL BIDS IN WHICH THE PARTIES ARE INVOLVED. HOWEVER, THIS DOES NOT LIMIT THE INCLUSION OF THE COMPONENTS/_SUB-ASSEMBLY/ ASSEMBLIES FROM ONE BIDDING MANUFACTURER IN MORE THAN ONE BID; **OR**

f) IN CASES OF AGENTS QUOTING IN OFFSHORE PROCUREMENTS, ON BEHALF OF THEIR PRINCIPAL MANUFACTURERS, ONE AGENT CANNOT REPRESENT TWO MANUFACTURERS OR QUOTE ON THEIR BEHALF IN A PARTICULAR TENDER ENQUIRY. ONE MANUFACTURER CAN ALSO AUTHORISE ONLY ONE AGENT/DEALER. THERE CAN BE ONLY ONE BID FROM THE FOLLOWING:

1. THE PRINCIPAL MANUFACTURER DIRECTLY OR THROUGH ONE INDIAN AGENT ON HIS BEHALF; AND
2. INDIAN/FOREIGN AGENT ON BEHALF OF ONLY ONE PRINCIPAL;

OR

g) A BIDDER OR ANY OF ITS AFFILIATES PARTICIPATED AS A CONSULTANT IN THE PREPARATION OF THE DESIGN OR TECHNICAL SPECIFICATIONS OF THE CONTRACT THAT IS THE SUBJECT OF THE BID; OR

h) IN CASE OF A HOLDING COMPANY HAVING MORE THAN ONE INDEPENDENTLY MANUFACTURING UNITS, OR MORE THAN ONE UNIT HAVING COMMON BUSINESS OWNERSHIP/MANAGEMENT, ONLY ONE UNIT SHOULD QUOTE. SIMILAR RESTRICTIONS WOULD APPLY TO CLOSELY RELATED SISTER COMPANIES. BIDDERS MUST PROACTIVELY DECLARE SUCH SISTER/ COMMON BUSINESS/ MANAGEMENT UNITS IN SAME/ SIMILAR LINE OF BUSINESS.”

13. ACTION AGAINST BIDDERS / VENDOR / SUPPLIER / CONTRACTOR IN CASE OF DEFAULT:

IN ORDER TO PROTECT THE COMMERCIAL INTERESTS OF BHEL, BHEL SHALL TAKE ACTION AGAINST SUPPLIERS / CONTRACTORS BY WAY OF SUSPENSION OF BUSINESS DEALINGS, WHO EITHER FAIL TO PERFORM OR ARE IN DEFAULT WITHOUT ANY REASONABLE CAUSE, CAUSE LOSS OF BUSINESS/ MONEY/ REPUTATION, INDULGE IN MALPRACTICES, CHEATING, BRIBERY, FRAUD OR ANY OTHER MISCONDUCT OR FORMATION OF CARTELS SO AS TO INFLUENCE THE BIDDING PROCESS OR INFLUENCE THE PRICE ETC.

SUSPENSION OF BUSINESS DEALINGS COULD BE IN THE FORM OF “HOLD” OR “BANNING” A SUPPLIER/ CONTRACTOR OR A BIDDER AND SHALL BE AS PER “GUIDELINES FOR SUSPENSION OF BUSINESS DEALINGS WITH SUPPLIERS/ CONTRACTORS” AVAILABLE AT BHEL’S WEBSITE <https://www.bhel.com/guidelines-suspension-business-dealings-supplierscontractors>

14. THE OFFERS OF THE BIDDERS WHO ARE UNDER HOLD/SUSPENSION/DEBARRED AS ALSO THE OFFERS OF THE BIDDERS, WHO ENGAGE THE SERVICES OF THE FIRMS DEBARRED ACROSS BHEL, SHALL BE REJECTED. THE LIST OF FIRMS DEBARRED ACROSS BHEL IS AVAILABLE ON BHEL WEB SITE WWW.BHEL.COM.

15. IF ANY BIDDER/ SUPPLIER/ CONTRACTOR DURING PRE-TENDERING/ TENDERING/ POST TENDERING/ AWARD/ EXECUTION/ POST-EXECUTION STAGE INDULGES IN MALPRACTICES, CHEATING, BRIBERY, FRAUD OR AND OTHER MISCONDUCT OR FORMATION OF CARTEL SO AS TO INFLUENCE THE BIDDING PROCESS OR INFLUENCE THE PRICE OR ACTS OR OMITS IN ANY MANNER WHICH TANTAMOUNT TO AN OFFENCE PUNISHABLE UNDER ANY PROVISION OF THE INDIAN PENAL CODE, 1860 OR ANY OTHER LAW IN FORCE IN INDIA, THEN, ACTION MAY BE TAKEN AGAINST SUCH BIDDER/ SUPPLIER/ CONTRACTOR AS PER EXANT GUIDELINES OF THE COMPANY AVAILABLE ON WWW. BHEL.COM AND/OR UNDER APPLICABLE LEGAL PROVISIONS.

16. BREACH OF CONTRACT, REMEDIES AND TERMINATION:

IN CASE OF BREACH OF CONTRACT, WHEREVER THE VALUE OF SECURITY INSTRUMENTS LIKE PERFORMANCE BANK GUARANTEE AVAILABLE WITH BHEL AGAINST THE SAID CONTRACT IS 10% OF THE CONTRACT VALUE OR MORE, SUCH SECURITY INSTRUMENTS TO THE EXTENT OF 10% CONTRACT VALUE WILL BE ENCASHED. IN CASE THE VALUE OF THE SECURITY INSTRUMENTS AVAILABLE IS LESS THAN 10% OF THE CONTRACT VALUE, THE BALANCE AMOUNT WILL BE RECOVERED IN ALL OR ANY OF THE FOLLOWING MANNERS:

- i. FROM DUES AVAILABLE IN THE FORM OF BILLS PAYABLE TO DEFAULTED SUPPLIER AGAINST THE SAME CONTRACT.
- ii. FROM THE DUES PAYABLE TO DEFAULTED SUPPLIER AGAINST OTHER CONTRACTS IN THE SAME REGION/UNIT /ANY OTHER REGION/UNIT
- iii. IN-CASE RECOVERIES ARE NOT POSSIBLE WITH ANY OF THE ABOVE AVAILABLE OPTIONS, LEGAL ACTION SHALL BE INITIATED FOR RECOVERY AGAINST DEFAULTED SUPPLIER.

FURTHER, LEVY OF LIQUIDATED DAMAGES, DEBARMENT, TERMINATION, DE-SCOPING, SHORT CLOSURE, ETC., WILL BE APPLIED AS PER PROVISIONS OF THE CONTRACT.

- 17.** BIDDER SHALL SUBMIT THE FOLLOWING DOCUMENTS ALONG WITH THEIR BID FOR VENDOR CODE CREATION:
1. A. COPY OF PAN CARD B. COPY OF GSTIN C. COPY OF MSE CERTIFICATE
- 18.** DATA SHEET OF THE PRODUCT(S) OFFERED IN THE BID, ARE TO BE UPLOADED ALONG WITH THE BID DOCUMENTS. BUYERS CAN MATCH AND VERIFY THE DATA SHEET WITH THE PRODUCT SPECIFICATIONS OFFERED. IN CASE OF ANY UNEXPLAINED MISMATCH OF TECHNICAL PARAMETERS, THE BID IS LIABLE FOR REJECTION.
- 19.** SCOPE OF SUPPLY (BID PRICE TO INCLUDE ALL COST COMPONENTS): ONLY SUPPLY OF GOODS.
- 20.** WHILE GENERATING INVOICE IN GEM PORTAL, THE SELLER MUST UPLOAD SCANNED COPY OF GST INVOICE AND THE SCREENSHOT OF GST PORTAL CONFIRMING PAYMENT OF GST.
- 21.** REST TERMS AND CONDITIONS SHALL BE as per GEM (Latest Version- applicable at the time of issuance of enquiry).