



The Heavy Electricals Equipment Plant (HEEP) located in Haridwar, India is one of the major manufacturing plants of Bharat Heavy Electricals Ltd. The core business of HEEP includes design and manufacture of large steam and gas turbines, turbo generators, Defense Items and so on.

Details of items details as below:

Sl. No.	ITEM CODE	ITEM DESCRIPTION	QUANTITY	DELIVERY
1	W97012713046	SELF LOCKING, HEXAGONAL HEAD SCREW M6X1X12 AS PER UNI 5739, LOCKING ELEMENT:ESLOK, MATERIAL CLASS:8.8, FINISH: ZINCO-NICKEL, N.STD:UNI 5739 SIZE: P/N 127620155	100	45
2	W97012802030	STUD, M10X22 AS PER UNI 5917, MATERIAL CLASS: 8.8, ELECTROPLATED COATING: P2G AS PER ISO 4042 (ZINC- NICKEL), N.STD:UNI 5917 SIZE: P/N 212867362	100	45
3	W97013300152	NUT, M8, DIMENSIONS AS PER UNI 5587, THREAD TOLERANCE: 6H, MATERIAL: AISI 304 (A2-70), ALT. MATERIAL AISI 316 (A4-70) OR AISI AISI 431 (C3-100) ALSO ACCEPTABLE, FINISH:PASSIVATION, N.STD:UNI 5587 SIZE: 215608304	100	45
4	W97013311138	NUT, SELF-LOCKING, M12 UNI 7473, MATL: 8.8, FINISH : ZINCONICKEL N.STD:UNI 7473 SIZE: P/N 212809248	300	45
5	W97013311251	NUT, SELF-LOCKING, M5 UNI 7473, MATL : AISI 316, FINISH : PASSIVATED, N.STD:UNI 7473 SIZE: P/N 214609242	100	45
6	W97013311278	NUT, SELF-LOCKING, M8 AS PER UNI 7473, MATERIAL: AISI 316 (A4-70), ALTERNATE MATERIAL AISI 304 (A2-70) OR AISI 431 (C3-100) ALSO ACCEPTABLE FINISH: PASSIVATION, N.STD:UNI 7473 SIZE: P/N 214609244	600	45
7	W97013312215	NUT SELF-LOCKING, M24 AS PER UNI7474, MATERIAL CLASS: 8, FINISH=ZINCO- NICKEL, N.STD:UNI 7474 SIZE: 212809351	100	45
8	W97013312223	NUT, SELF-LOCKING, M12X1.5 AS PER UNI 7474, MATERIAL CLASS: 8, FINISH : ZINCONICKEL N.STD:UNI 7474, SIZE: 212809342	100	45
9	W97013414174	WASHER 13X20 FOR ROUND/ CHEESE HEAD SCREW OF SIZE:M12, AS PER UNI 6592 OR EQVLNT STD. DIN 433/ ISO 7092/IS:2016 TYPEB ALSO ACCEPTABLE, MATERIAL: STEEL R80 (CARBON STEEL HAVING MIN. UTS OF 785 MPA, HARDNESS CLASS: 200 HV), COATING: ZINCONICKEL, DIMENSION,TOLERANCE AND DETAILS AS PER GOVERNING STD. N.STD:- SIZE: 210806428/210878226	300	45
10	W97013311200	NUT, SELF-LOCKING, M20X1.5 UNI 7473, MATL : 8.8, FINISH : ZI NCO-NICKEL N.STD:UNI 7473, SIZE: P/N 212809257	100	45

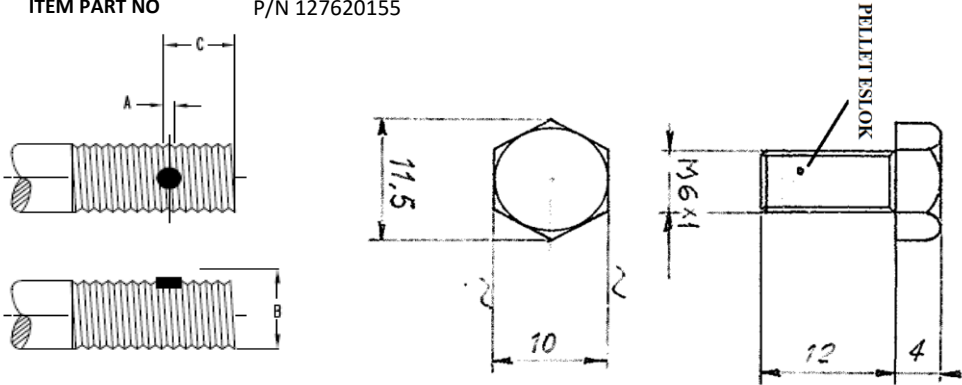
1. ALL VENDORS TO PROVIDE POINT WISE REPLY/CONFIRMATION ALONG WITH RELEVANT SUPPORTING DOCUMENTS TO EACH AND EVERY POINT OF PRE-QUALIFICATION REQUIREMENT/PQR FOR ALL ENQUIRY ITEMS. NONCOMPLIANCE OF THESE MAY LEAD TO REJECTION OF OFFER AS THESE ARE ESSENTIAL CONDITION FOR PARTICIPATING IN TENDER ENQUIRY
2. KINDLY UPLOAD/ATTACH THE SPECIFICATION DETAILS/ CATALOGUE OF OFFERED ITEMS.
3. KINDLY ARRANGE TO **SUBMIT TECHNO-COMMERCIAL CHECKLIST** ALONG WITH YOUR OFFER.
4. VENDOR TO CONFIRM TO PROVIDE MATERIAL & DIMENSIONAL TEST CERTIFICATES AS PER ENQUIRY STANDARDS ALONG WITH MATERIAL DISPATCH.
5. VENDOR TO CONFIRM TO PROVIDE DOCUMENTS COVERING TECHNICAL PARAMETERS OF MATERIALS.
6. VENDOR TO CONFIRM TO PROVIDE DOCUMENTS KEEP PROPER CORRELATION WITH PO ITEMS AND THEIR QUANTITY.
7. VENDOR TO CONFIRM TO PROVIDE CERTIFICATE OF CONFORMANCE ALONG WITH MATERIAL DISPATCH.
8. VENDOR TO CONFIRM TO PROVIDE NON REMOVABLE IDENTIFICATION OF ALL ITEMS AND THEIR REPORT ACCORDINGLY.
9. EARLY DELIVERY ACCEPTABLE.

**QUALIFYING CONDITIONS for all types of SELF LOCKING NUT AND SCREWS, WASHER AND STUDS**

Sl.	PQR Requirement	Vendor Response	Vendor Response (Yes / No / Remarks, if any)
1.	who can manufacture or supply SELF LOCKING NUT AND SCREWS, WASHER AND STUDS as per national and equivalent International standards	Vendor to confirm	
2.	who can provide Technical Datasheet along with supplies	Vendor to confirm	
3.	who can provide Material Test Certificate with mechanical and chemical properties along with supplies	Vendor to confirm	
4.	who can provide Certificate of Conformance (COC) ( <i>also known as Certificate of Conformity or Certificate of Compliance</i> )	Vendor to confirm	
5.	Above are the Mandatory Qualification Requirements. <i>Offers of vendors not meeting these requirements will NOT be considered.</i>	Vendor to accept	

**TECHNICAL PARAMETERS CHECK LIST**  
**DATA VALUES TO BE FILLED AND CONFIRMED BY VENDOR**

ITEM CODE                   W97012713046  
 ITEM NAME                 SELF LOCKING, HEXAGONAL HEAD SCREW M6X1X12  
 ITEM PART NO             P/N 127620155



<b>NOTE: Vendor to input parameters based on the specification of the item quoted.</b>						
SN.	PARAMETERS	VALUES	TOLERANCE	UNIT	RESPONSE TYPE	VENDOR RESPONSE
1	QUOTED AS PER	UNI 5739 OR EQUIVALENT	-	-	To specify	→
2	SIZE; d	M6	6g	MM	Input Value	→
3	PITCH	1	-	MM	Input Value	→
4	THREAD LENGTH	FULL	-	-	To confirm	→
5	ACROSS FLAT	10	nom.	MM	Input Value	→
6	LOCKING ELEMENT	PELLET	-	-	To confirm	→
7	PELLET MATERIAL	Nylon / ESLOK	-	-	To confirm	→
8	<b>PELLET SIZE &amp; LOCATION</b>					
8.1	A	2.2 - 3.5	-	MM	Input Value	→
8.2	B	6.1 - 6.4	-	MM	Input Value	→
8.3	C	4.8 - 5.8	-	MM	Input Value	→
9	PELLET DEPTH	3	0.0 + 0.1	MM	Input Value	→
10	LENGTH: L	12	-	MM	Input Value	→
11	FASTENER MATERIAL	STEEL CLASS 8		-	Input Value	→
12	REUSABILITY	THE SELF- LOCKING FASTENER SHALL BE CAPABLE OF 5 SEATED CYCLES WITHOUT DAMAGE TO EITHER THE NUT OR BOLT THREADS		-	To confirm	→
13	PROTECTIVE FINISH	ZINCO-NICKEL OR CADMIUM CHROMATE		-	To confirm	→
14	CERTIFICATION	Mechanical & Chemical properties TC		Y/N	To confirm	→
15	CERTIFICATION	Certificate of Conformance / Compliance (COC)		Y/N	To confirm	→

**16. VENDOR REMARKS**

--

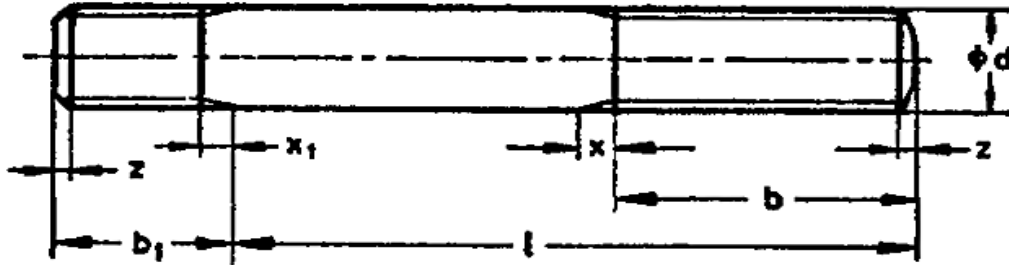
**TECHNICAL PARAMETERS CHECK LIST**  
**DATA VALUES TO BE FILLED AND CONFIRMED BY VENDOR**

ITEM CODE                    W97012802030  
ITEM NAME                    STUD, M10X22 AS PER UNI 5917  
ITEM PART NO                P/N 212867362

**All dimensions in millimetres.**

**TAP END**

**NUT END**



**NOTE: Vendor to input parameters based on the specification of the item quoted.**

SN.	PARAMETERS	VALUES	TOLERANCE	UNIT	RESPONSE TYPE	VENDOR RESPONSE
1	QUOTED AS PER	UNI 5917 OR EQUIVALENT		-	To specify	→
2	SIZE; d	M10	6g	MM	Input Value	→
3	PITCH	1.5	-	MM	Input Value	→
4	TAP END ( B1 )	25	-	MM	To confirm	→
5	NUT END ( B ) ~ [ L - (X+3) ]	26	+ 3.0 - 0.0	MM	Input Value	→
6	LENGTH ( L )	22	-	MM	Input Value	→
7	MATERIAL	STEEL CLASS 8.8		-	Input Value	→
8	PROTECTIVE FINISH	ZINC- NICKEL / CADMIUM CROMATED		-	To confirm	→
9	CERTIFICATION	Mechanical & Chemical properties		Y/N	To confirm	→
10	CERTIFICATION	Certificate of Conformance / Compliance (COC)		Y/N	To confirm	→

**11. VENDOR REMARKS**

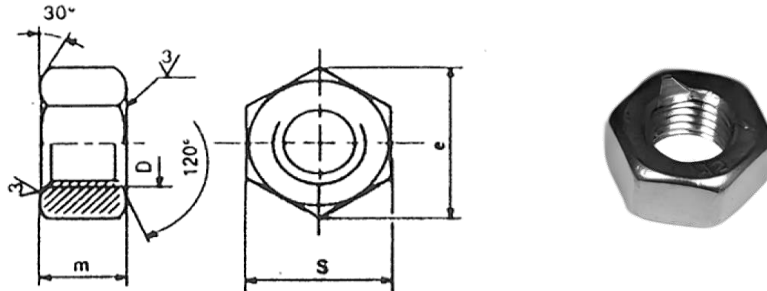
**TECHNICAL PARAMETERS CHECK LIST**  
**DATA VALUES TO BE FILLED AND CONFIRMED BY VENDOR**

ITEM MATCODE W97013300152

ITEM NAME NUT M8, UNI 5587 WITH RIGHT HAND THREAD

ITEM PART NO P/N 215608304

**COMMERCIAL EQUIVALENTS**



ALL DIMENSIONS IN MM

**NOTE: Vendor to input parameters based on the specification of the item quoted.**

SN.	DESCRIPTION	SPECIFICATION #	RESPONSE TYPE	VENDOR RESPONSE
1	ITEM	HEXAGON NUT	To confirm →	
2	SPECIFICATION & DIMENSIONS	UNI 5587 OR EQUIVALENT	To specify →	
3	THREAD SIZE ( D ) x PITCH	M8X1.25	To input →	
4	THREAD DIRECTION	RIGHT HAND	To confirm →	
5	THICKNESS ( M )	8 MM Tol. h14	To input →	
6	FLAT TO FLAT ( S )	13 MM Tol. h13	To input →	
7	MATERIAL	AISI 304 (A2-70), AISI 316 (A4-70) OR AISI AISI 431 (C3-100)	To input →	
8	FINISH	PASSIVATION	To confirm →	
9	CERTIFICATION	MATERIAL TEST CERTIFICATE	Confirm to supply →	
10	CERTIFICATION	Certificate of Conformance / Compliance (COC)	Confirm to supply →	
11	VENDOR REMARKS			

# Vendor to specify the specification number of the offered item.

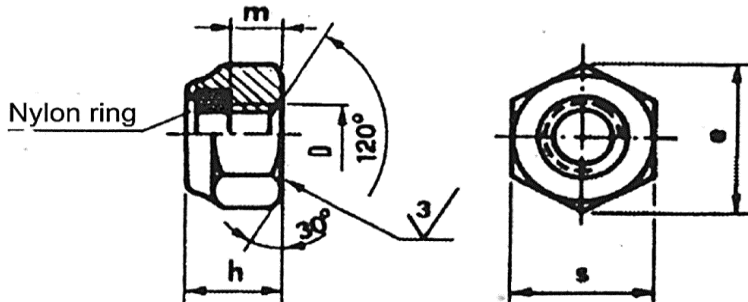
**TECHNICAL PARAMETERS CHECK LIST**  
**DATA VALUES TO BE FILLED AND CONFIRMED BY VENDOR**

ITEM MATCODE W97013311138

ITEM NAME NUT, SELF-LOCKING, M12 UNI 7473

ITEM PART NO P/N 212809248

**COMMERCIAL EQUIVALENTS**



ALL DIMENSIONS IN MM

<b>NOTE: Vendor to input parameters based on the specification of the item quoted.</b>				
<b>SN.</b>	<b>DESCRIPTION</b>	<b>SPECIFICATION #</b>	<b>RESPONSE TYPE</b>	<b>VENDOR RESPONSE</b>
1	ITEM	NUT SELF-LOCKING, THICK	To confirm →	
2	SPECIFICATION & DIMENSIONS	UNI 7473 DIN 982 OR EQUIVALENT	To specify →	
3	THREAD SIZE ( D ) x PITCH	M12 x 1.75	To input →	
4	THICKNESS ( h )	14.8 MM Tol. h14	To input →	
5	THICKNESS ( m )	9.6 MM Tol. h14	To input →	
6	FLAT TO FLAT ( S )	19 MM Tol. h13	To input →	
7	LOCKING ELEMENT	NYLON RING	To confirm →	
8	MATERIAL	STEEL CLASS 8	To input →	
9	PROTECTIVE FINISH	ZINCO NICKEL / CADMIUM CHROMATED	To confirm →	
10	CERTIFICATION	MATERIAL TEST CERTIFICATE	Confirm to supply →	
11	CERTIFICATION	Certificate of Conformance / Compliance (COC)	Confirm to supply →	
12	VENDOR REMARKS			

# Vendor to specify the specification number of the offered item.

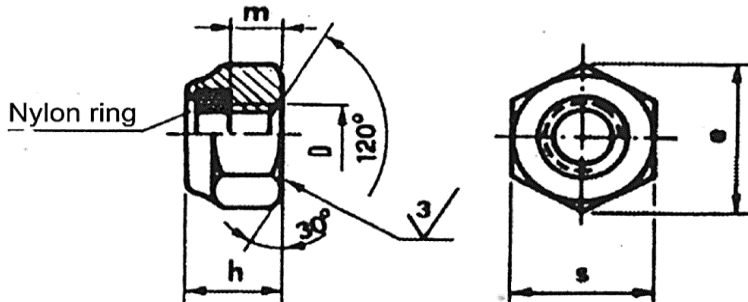
**TECHNICAL PARAMETERS CHECK LIST**  
**DATA VALUES TO BE FILLED AND CONFIRMED BY VENDOR**

ITEM MATCODE W97013311251

ITEM NAME NUT, SELF-LOCKING, M5 UNI 7473

ITEM PART NO P/N 214609242

**COMMERCIAL EQUIVALENTS**



ALL DIMENSIONS IN MM

<b>NOTE: Vendor to input parameters based on the specification of the item quoted.</b>				
SN.	DESCRIPTION	SPECIFICATION #	RESPONSE TYPE	VENDOR RESPONSE
1	ITEM	NUT SELF-LOCKING, THICK	To confirm →	
2	SPECIFICATION & DIMENSIONS	UNI 7473 DIN 982 OR EQUIVALENT	To specify →	
3	THREAD SIZE ( D ) x PITCH	M5 x 0.8	To input →	
4	THICKNESS ( h )	6.8 MM Tol. h14	To input →	
5	THICKNESS ( m )	4 MM Tol. h14	To input →	
6	FLAT TO FLAT ( S )	8 MM Tol. h12	To input →	
7	LOCKING ELEMENT	NYLON RING	To confirm →	
8	MATERIAL	AISI 316 (A4-70) OR AISI 304 (A2-70) OR AISI 431 (C3-100)	To input →	
9	PROTECTIVE FINISH	PASSIVATED	To confirm →	
10	CERTIFICATION	MATERIAL TEST CERTIFICATE	Confirm to supply →	
11	CERTIFICATION	Certificate of Conformance / Compliance (COC)	Confirm to supply →	
12	VENDOR REMARKS			

# Vendor to specify the specification number of the offered item.

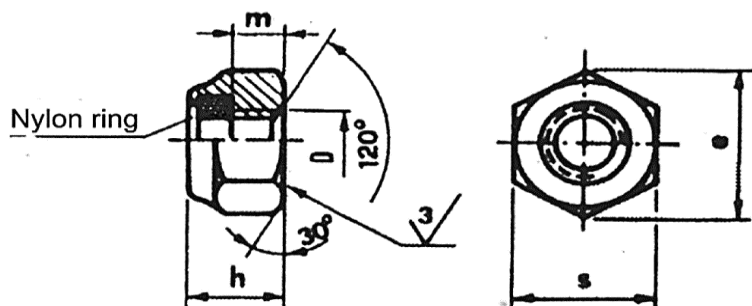
**TECHNICAL PARAMETERS CHECK LIST**  
**DATA VALUES TO BE FILLED AND CONFIRMED BY VENDOR**

ITEM MATCODE W97013311278

ITEM NAME NUT, SELF-LOCKING, M8 UNI 7473

ITEM PART NO P/N 214609244

**COMMERCIAL EQUIVALENTS**



ALL DIMENSIONS IN MM

**NOTE: Vendor to input parameters based on the specification of the item quoted.**

SN.	DESCRIPTION	SPECIFICATION #	RESPONSE TYPE	VENDOR RESPONSE
1	ITEM	NUT SELF-LOCKING, THICK	To confirm →	
2	SPECIFICATION & DIMENSIONS	UNI 7473 DIN 982 OR EQUIVALENT	To specify →	
3	THREAD SIZE ( D ) x PITCH	M8 x 1.25	To input →	
4	THICKNESS ( h )	10.6 MM Tol. h14	To input →	
5	THICKNESS ( m )	6.4 MM Tol. h14	To input →	
6	FLAT TO FLAT ( S )	13 MM Tol. h12	To input →	
7	LOCKING ELEMENT	NYLON RING	To confirm →	
8	MATERIAL	AISI 316 (A4-70) OR AISI 304 (A2-70) OR AISI 431 (C3-100)	To input →	
9	PROTECTIVE FINISH	PASSIVATED	To confirm →	
10	CERTIFICATION	MATERIAL TEST CERTIFICATE	Confirm to supply →	
11	CERTIFICATION	Certificate of Conformance / Compliance (COC)	Confirm to supply →	
12	VENDOR REMARKS			

# Vendor to specify the specification number of the offered item.

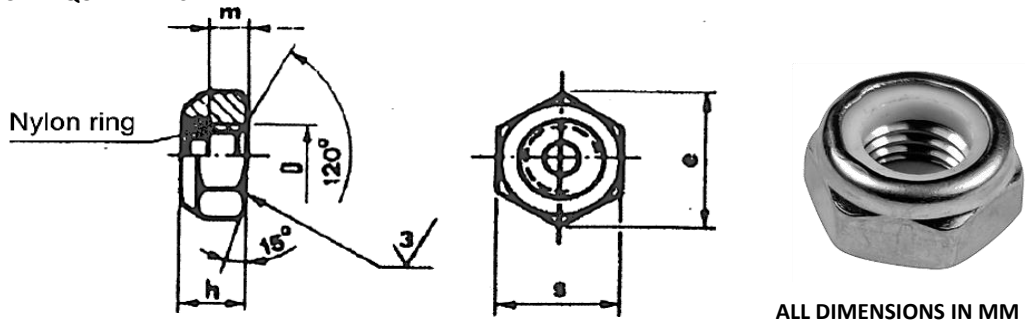
**TECHNICAL PARAMETERS CHECK LIST**  
**DATA VALUES TO BE FILLED AND CONFIRMED BY VENDOR**

ITEM MATCODE W97013312215

ITEM NAME NUT, SELF-LOCKING, M24 UNI 7474

ITEM PART NO P/N 212809351

**COMMERCIAL EQUIVALENTS**



<b>NOTE: Vendor to input parameters based on the specification of the item quoted.</b>				
<b>SN.</b>	<b>DESCRIPTION</b>	<b>SPECIFICATION #</b>	<b>RESPONSE TYPE</b>	<b>VENDOR RESPONSE</b>
1	ITEM	NUT SELF-LOCKING, THIN	To confirm →	
2	SPECIFICATION & DIMENSIONS	UNI 7474 DIN 985 OR EQUIVALENT	To specify →	
3	THREAD SIZE ( D ) x PITCH	M24 x 3	To input →	
4	THICKNESS ( h )	21 MM Tol. h14	To input →	
5	THICKNESS ( m )	12 MM Tol. h14	To input →	
6	FLAT TO FLAT ( S )	36 MM Tol. h13	To input →	
7	LOCKING ELEMENT	NYLON RING	To confirm →	
8	MATERIAL	STEEL CLASS 8	To input →	
9	PROTECTIVE FINISH	ZINCO-NICKEL / CADMIUM CHROMATE	To input →	
10	CERTIFICATION	MATERIAL TEST CERTIFICATE	Confirm to supply →	
11	CERTIFICATION	Certificate of Conformance / Compliance (COC)	Confirm to supply →	
12	VENDOR REMARKS			

# Vendor to specify the specification number of the offered item.

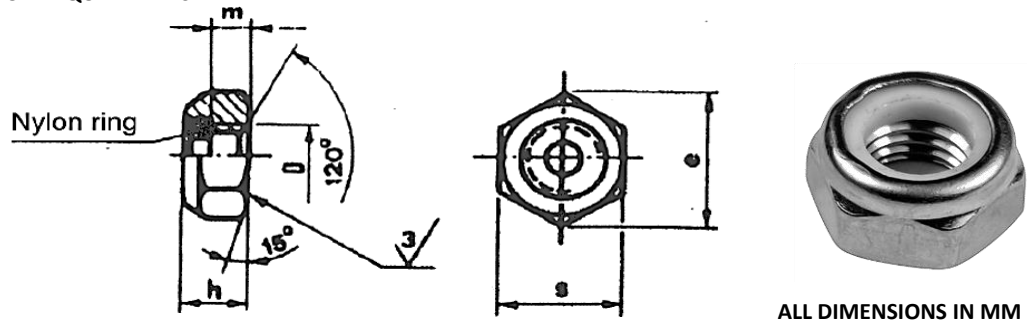
**TECHNICAL PARAMETERS CHECK LIST**  
**DATA VALUES TO BE FILLED AND CONFIRMED BY VENDOR**

ITEM MATCODE W97013312223

ITEM NAME NUT, SELF-LOCKING, M12X1.5 UNI 7474

ITEM PART NO P/N 212809342

**COMMERCIAL EQUIVALENTS**

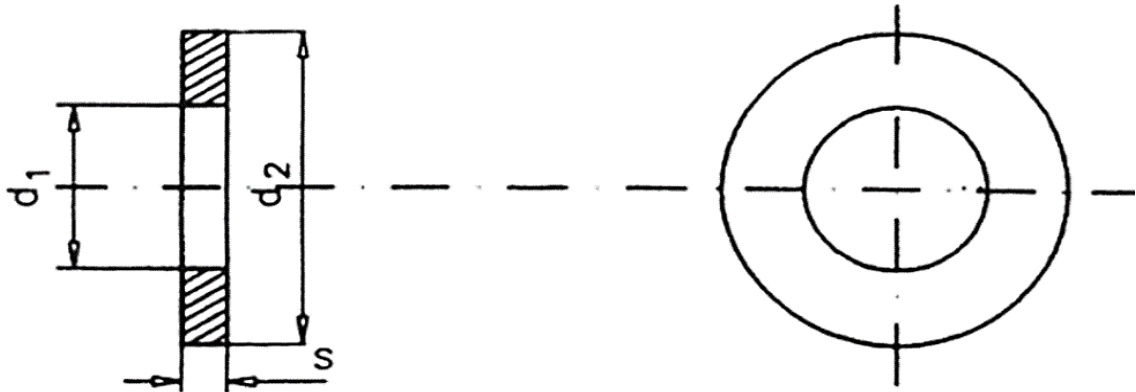


<b>NOTE: Vendor to input parameters based on the specification of the item quoted.</b>				
<b>SN.</b>	<b>DESCRIPTION</b>	<b>SPECIFICATION #</b>	<b>RESPONSE TYPE</b>	<b>VENDOR RESPONSE</b>
1	ITEM	NUT SELF-LOCKING, THIN	To confirm →	
2	SPECIFICATION & DIMENSIONS	UNI 7474 DIN 985 OR EQUIVALENT	To specify →	
3	THREAD SIZE ( D ) x PITCH	M12 x 1.5	To input →	
4	THICKNESS ( h )	12 MM Tol. h14	To input →	
5	THICKNESS ( m )	6 MM Tol. h14	To input →	
6	FLAT TO FLAT ( S )	19 MM Tol. h13	To input →	
7	LOCKING ELEMENT	NYLON RING	To confirm →	
8	MATERIAL	STEEL CLASS 8	To input →	
9	PROTECTIVE FINISH	ZINCO-NICKEL / CADMIUM CHROMATE	To input →	
10	CERTIFICATION	MATERIAL TEST CERTIFICATE	Confirm to supply →	
11	CERTIFICATION	Certificate of Conformance / Compliance (COC)	Confirm to supply →	
12	VENDOR REMARKS			

# Vendor to specify the specification number of the offered item.

**TECHNICAL PARAMETERS CHECK LIST**  
**DATA VALUES TO BE FILLED AND CONFIRMED BY VENDOR**

ITEM CODE                   W97013414069  
 ITEM NAME                 WASHER 13X24 AS PER UNI 6592(FOR HEX HEAD SCREW OF SIZE M12)  
 ITEM PART NO             P/N 210878206/210806388



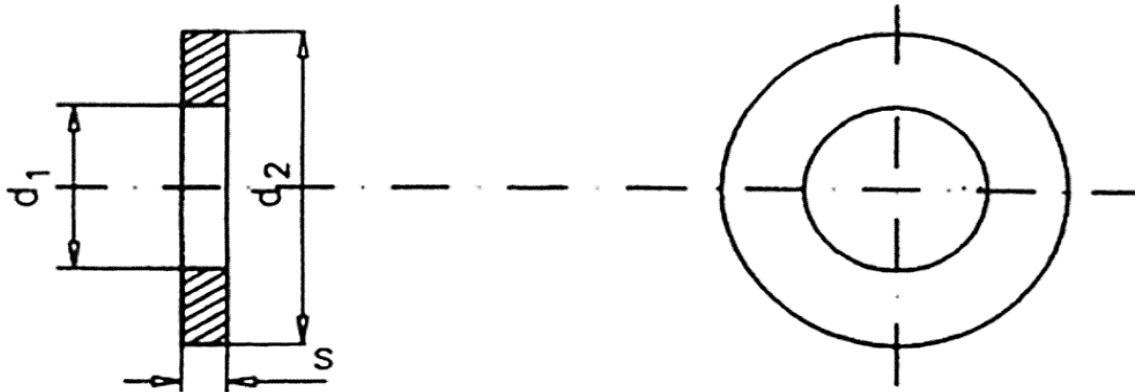
**NOTE: Vendor to input parameters based on the specification of the Washer quoted.**

SN.	PARAMETERS	VALUES	TOLERANCE	UNIT	RESPONSE TYPE	VENDOR RESPONSE
1	WASHER QUOTED AS PER	UNI 6592 DIN 125A ISO 7089 IS:2016(TYPE A)	-	-	Specify Spec.	→
2	d1	13	+ 0.27 - 0.00	MM	Input Value	→
3	d2	24	+ 0.65 - 0.65	MM	Input Value	→
4	s	2.5	+ 0.22 - 0.22	MM	Input Value	→
5	MATERIAL	STEEL R80 (CARBON STEEL HAVING MIN. UTS OF 785 MPA, HARDNESS HRC: BETWEEN 21 TO 30)		-	Input Value	→
6	FINISH	ZINCO-NICKEL / CADMIUMN CHROMATING		-	Input Value	→
7	CERTIFICATION	Mechanical & Chemical properties		Y	Confirm to supply	→
8	CERTIFICATION	Certificate of Conformance / Compliance (COC)		Y	Confirm to supply	→

**9. VENDOR REMARKS**

**TECHNICAL PARAMETERS CHECK LIST**  
**DATA VALUES TO BE FILLED AND CONFIRMED BY VENDOR**

ITEM CODE                   W97013414174  
 ITEM NAME                 WASHER 13X20 FOR ROUND/CHEESE HEAD SCREW OF SIZE:M12) AS PER UNI 6592  
 ITEM PART NO             P/N 210806428/210878226



**NOTE: Vendor to input parameters based on the specification of the Washer quoted.**

SN.	PARAMETERS	VALUES	TOLERANCE	UNIT	RESPONSE TYPE	VENDOR RESPONSE
1	WASHER QUOTED AS PER	UNI 6592 DIN 125A ISO 7089 IS:2016(TYPE A)	-	-	Specify Spec.	→
2	d1	13	+ 0.27 - 0.00	MM	Input Value	→
3	d2	20	+ 0.65 - 0.65	MM	Input Value	→
4	s	2.5	+ 0.22 - 0.22	MM	Input Value	→
5	MATERIAL	STEEL R80 (CARBON STEEL HAVING MIN. UTS OF 785 MPA, HARDNESS HRC: BETWEEN 21 TO 30)		-	Input Value	→
6	FINISH	ZINCO-NICKEL / CADMIUMN CHROMATING		-	Input Value	→
7	CERTIFICATION	Mechanical & Chemical properties		Y	Confirm to supply	→
8	CERTIFICATION	Certificate of Conformance / Compliance (COC)		Y	Confirm to supply	→

**9. VENDOR REMARKS**

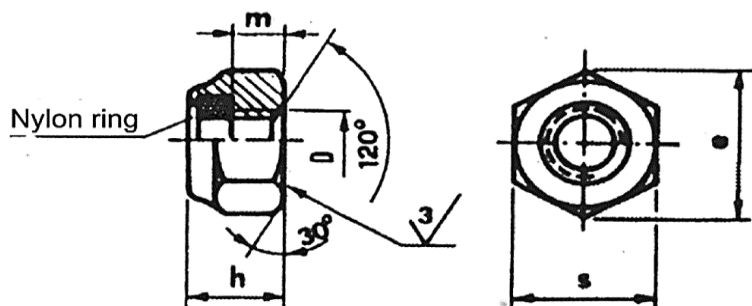
**TECHNICAL PARAMETERS CHECK LIST**  
**DATA VALUES TO BE FILLED AND CONFIRMED BY VENDOR**

ITEM MATCODE W97013311200

ITEM NAME NUT, SELF-LOCKING, M20X1.5 UNI 7473

ITEM PART NO P/N 212809257

**COMMERCIAL EQUIVALENTS**



ALL DIMENSIONS IN MM

**NOTE: Vendor to input parameters based on the specification of the item quoted.**

SN.	DESCRIPTION	SPECIFICATION #	RESPONSE TYPE	VENDOR RESPONSE
1	ITEM	NUT SELF-LOCKING, THICK	To confirm →	
2	SPECIFICATION & DIMENSIONS	UNI 7473 DIN 982 OR EQUIVALENT	To specify →	
3	THREAD SIZE ( D ) x PITCH	M20 x 1.5	To input →	
4	THICKNESS ( h )	23 MM Tol. h14	To input →	
5	THICKNESS ( m )	16 MM Tol. h14	To input →	
6	FLAT TO FLAT ( S )	30 MM Tol. h13	To input →	
7	LOCKING ELEMENT	NYLON RING	To confirm →	
8	MATERIAL	STEEL CLASS 8	To input →	
9	PROTECTIVE FINISH	ZINCO-NICKEL / CADMIUM CHROMATE	To input →	
10	CERTIFICATION	MATERIAL TEST CERTIFICATE	Confirm to supply →	
11	CERTIFICATION	Certificate of Conformance / Compliance (COC)	Confirm to supply →	
12	VENDOR REMARKS			

# Vendor to specify the specification number of the offered item.

## TECHNO-COMMERCIAL CHECKLIST

SL. NO.	TERMS & CONDITION	VENDOR CONFIRMATION /REMARKS / REPLY
1	BIDDER NAME	
2	GEM BID NO	
3	ITEM IS TO BE SUPPLIED AS PER TECHNICAL SPECIFICATION	
4	ALL VENDORS TO PROVIDE POINT WISE REPLY/CONFIRMATION ALONG WITH RELEVANT SUPPORTING DOCUMENTS TO EACH AND EVERY POINT OF PRE-QUALIFICATION REQUIREMENT/PQR FOR ALL ENQUIRY ITEMS. NONCOMPLIANCE OF THESE MAY LEAD TO REJECTION OF OFFER AS THESE ARE ESSENTIAL CONDITION FOR PARTICIPATING IN TENDER ENQUIRY	
5	KINDLY UPLOAD/ATTACH THE SPECIFICATION DETAILS/ CATALOGUE OF OFFERED ITEMS.	
6	VENDOR TO CONFIRM TO PROVIDE MATERIAL & DIMENSIONAL TEST CERTIFICATES AS PER ENQUIRY STANDARDS ALONG WITH MATERIAL DISPATCH.	
7	VENDOR TO CONFIRM TO PROVIDE DOCUMENTS COVERING TECHNICAL PARAMETERS OF MATERIALS.	
8	VENDOR TO CONFIRM TO PROVIDE DOCUMENTS KEEP PROPER CORRELATION WITH PO ITEMS AND THEIR QUANTITY.	
9	VENDOR TO CONFIRM TO PROVIDE CERTIFICATE OF CONFORMANCE ALONG WITH MATERIAL DISPATCH	
10	VENDOR TO CONFIRM TO PROVIDE NON REMOVABLE IDENTIFICATION OF ALL ITEMS AND THEIR REPORT ACCORDINGLY.	
11	<b>RISK PURCHASE:</b> IN CASE OF ABNORMAL DELAYS (BEYOND THE MAXIMUM LATE DELIVERY PERIOD AS PER LD CLAUSE) IN SUPPLIES / DEFECTIVE SUPPLIES OR NONFULFILLMENT OF ANY OTHER TERMS AND CONDITIONS GIVEN IN PURCHASE ORDER, BHEL MAY CANCEL THE PURCHASE ORDER IN FULL OR PART THEREOF, AND MAY ALSO MAKE THE PURCHASE OF SUCH MATERIAL FROM ELSEWHERE / ALTERNATIVE SOURCE AT THE RISK AND COST OF THE SUPPLIER. BHEL WILL TAKE ALL REASONABLE STEPS TO GET THE MATERIAL FROM ALTERNATE SOURCE AT OPTIMUM COST. IF BIDDER DOES NOT AGREE TO THE ABOVE RISK PURCHASE CLAUSE, BHEL RESERVES THE RIGHT TO REJECT THE OFFER. IN CASE FOR COMPELLING REASONS BHEL ACCEPTS THE OFFER WITHOUT ACCEPTANCE OF THIS CLAUSE BY THE BIDDER AND IN THE EVENTUALITY OF RISK PURCHASE, APPROPRIATE ACTION WILL BE TAKEN AS PER BHEL EXTANT RULES. THIS WILL BE WITHOUT PREJUDICE TO ANY OTHER RIGHT OF BHEL UNDER THE CONTRACT OR UNDER GENERAL LAW.	
12	<b>ACTION AGAINST BIDDERS / VENDOR / SUPPLIER / CONTRACTOR IN CASE OF DEFAULT:</b> IN ORDER TO PROTECT THE COMMERCIAL INTERESTS OF BHEL, BHEL SHALL TAKE ACTION AGAINST SUPPLIES / CONTRACTORS BY WAY OF SUSPENSION OF BUSINESS DEALINGS, WHO EITHER FAIL TO PERFORM OR ARE IN DEFAULT WITHOUT ANY REASONABLE CAUSE, CAUSE LOSS OF BUSINESS/ MONEY/ REPUTATION, INDULGE IN MALPRACTICES, CHEATING, BRIBERY, FRAUD OR ANY OTHER MISCONDUCT OR FORMATION OF CARTELS SO AS TO INFLUENCE THE BIDDING PROCESS OR INFLUENCE THE PRICE ETC. SUSPENSION OF BUSINESS DEALINGS COULD BE IN THE FORM OF "HOLD" OR "BANNING" A SUPPLIER/ CONTRACTOR OR A BIDDER AND SHALL BE AS PER "GUIDELINES FOR SUSPENSION OF BUSINESS DEALINGS WITH SUPPLIERS/ CONTRACTORS" AVAILABLE AT BHEL'S WEBSITE " <a href="https://www.bhel.com/guidelines-suspension-business-dealings-supplierscontractors">https://www.bhel.com/guidelines-suspension-business-dealings-supplierscontractors</a> "	

1. ALL VENDORS TO PROVIDE POINT WISE REPLY/CONFIRMATION ALONG WITH RELEVANT SUPPORTING DOCUMENTS TO EACH AND EVERY POINT OF PRE-QUALIFICATION REQUIREMENT/PQR FOR ALL ENQUIRY ITEMS. NONCOMPLIANCE OF THESE MAY LEAD TO REJECTION OF OFFER AS THESE ARE ESSENTIAL CONDITION FOR PARTICIPATING IN TENDER ENQUIRY
2. KINDLY UPLOAD/ATTACH THE SPECIFICATION DETAILS/ CATALOGUE OF OFFERED ITEMS.
3. KINDLY ARRANGE TO **SUBMIT TECHNO-COMMERCIAL CHECKLIST** ALONG WITH YOUR OFFER.
4. VENDOR TO CONFIRM TO PROVIDE MATERIAL & DIMENSIONAL TEST CERTIFICATES (FOR 100% QUANTITIES) AS PER APPLICABLE DRAWING & STANDARD ALONG WITH MATERIAL DISPATCH.
5. VENDOR TO CONFIRM TO PROVIDE TECHNICAL DATA SHEET AS PER APPLICABLE DRAWING, STANDARD & CHECKLIST.
6. VENDOR TO CONFIRM TO PROVIDE TEST CERTIFICATES KEEP PROPER CORRELATION WITH PO ITEMS AND THEIR QUANTITY.
7. VENDOR TO CONFIRM TO PROVIDE CERTIFICATE OF CONFORMANCE ALONG WITH MATERIAL DISPATCH.
8. VENDOR TO CONFIRM TO PROVIDE IDENTIFICATION OF ALL ITEMS AND THEIR REPORT ACCORDINGLY
9. EARLY DELIVERY ACCEPTABLE.
10. MSE/MII: THE SUPPLIER NEEDS TO SUBMIT/UPDATE MSE/MII CREDENTIALS ON GEM PORTAL DURING PROFILE UPDATION/ OFFER SUBMISSION STAGE. THE MSE DATA SUBMITTED IS CROSS VERIFIED BY GEM WITH GOVT. OF INDIA UDYAM/NSIC DATABASE THROUGH API INTEGRATION ON REAL TIME BASIS AND FOR MII, A SELF DECLARATION IS BEING GIVEN AND AUTHENTICATED BY AADHAR OTP. IF THE SELLER FAILS TO CLAIM MSE/MII PROVISION ON GEM PORTAL AT PROFILE UPDATION/BID SUBMISSION STAGE, THE SAID SELLER WILL BECOME INELIGIBLE FOR GETTING THE MSE/MII BENEFITS FOR THAT BID AUTOMATICALLY. THE VENDOR CAN ALWAYS CONTACT THE GEM HELPDESK, IN CASE OF ANY ISSUES.
11. THE PRICE QUOTE BY BIDDER SHOULD BE INCLUSIVE OF GST & SHOULD BE ON BHEL HEEP HARIDWAR STORES BASIS.
12. BIDDER'S OFFER IS LIABLE TO BE REJECTED IF THEY DON'T UPLOAD ANY OF THE CERTIFICATES / DOCUMENTS SOUGHT IN THE BID DOCUMENT, ATC AND CORRIGENDUM IF ANY.
13. **RISK PURCHASE:** IN CASE OF ABNORMAL DELAYS (BEYOND THE MAXIMUM LATE DELIVERY PERIOD AS PER LD CLAUSE) IN SUPPLIES / DEFECTIVE SUPPLIES OR NONFULFILLMENT OF ANY OTHER TERMS AND CONDITIONS GIVEN IN PURCHASE ORDER, BHEL MAY CANCEL THE PURCHASE ORDER IN FULL OR PART THEREOF, AND MAY ALSO MAKE THE PURCHASE OF SUCH MATERIAL FROM ELSEWHERE / ALTERNATIVE SOURCE AT THE RISK AND COST OF THE SUPPLIER. BHEL WILL TAKE ALL REASONABLE STEPS TO GET THE MATERIAL FROM ALTERNATE SOURCE AT OPTIMUM COST. IF BIDDER DOES NOT AGREE TO THE ABOVE RISK PURCHASE CLAUSE, BHEL RESERVES THE RIGHT TO REJECT THE OFFER. IN CASE FOR COMPELLING REASONS BHEL ACCEPTS THE OFFER WITHOUT ACCEPTANCE OF THIS CLAUSE BY THE BIDDER AND IN THE EVENTUALITY OF RISK PURCHASE, APPROPRIATE ACTION WILL BE TAKEN AS PER BHEL EXISTANT RULES. THIS WILL BE WITHOUT PREJUDICE TO ANY OTHER RIGHT OF BHEL UNDER THE CONTRACT OR UNDER GENERAL LAW.
14. **ACTION AGAINST BIDDERS / VENDOR / SUPPLIER / CONTRACTOR IN CASE OF DEFAULT:**  
IN ORDER TO PROTECT THE COMMERCIAL INTERESTS OF BHEL, BHEL SHALL TAKE ACTION AGAINST SUPPLIES / CONTRACTORS BY WAY OF SUSPENSION OF BUSINESS DEALINGS, WHO EITHER FAIL TO PERFORM OR ARE IN DEFAULT WITHOUT ANY REASONABLE CAUSE, CAUSE LOSS OF BUSINESS/ MONEY/ REPUTATION, INDULGE IN MALPRACTICES, CHEATING, BRIBERY, FRAUD OR ANY OTHER MISCONDUCT OR FORMATION OF CARTELS SO AS TO INFLUENCE THE BIDDING PROCESS OR INFLUENCE THE PRICE ETC.  
SUSPENSION OF BUSINESS DEALINGS COULD BE IN THE FORM OF "HOLD" OR "BANNING" A SUPPLIER/ CONTRACTOR OR A BIDDER AND SHALL BE AS PER "GUIDELINES FOR SUSPENSION OF BUSINESS DEALINGS

WITH SUPPLIERS/ CONTRACTORS" AVAILABLE AT BHEL'S WEBSITE <https://www.bhel.com/guidelines-suspension-business-dealings-supplierscontractors>

15. BIDDERS ARE ADVISED TO CHECK APPLICABLE GST ON THEIR OWN BEFORE QUOTING. BUYER WILL NOT TAKE ANY RESPONSIBILITY IN THIS REGARDS. GST REIMBURSEMENT WILL BE AS PER ACTUALS OR AS PER APPLICABLE RATES (WHICHEVER IS LOWER), SUBJECT TO THE MAXIMUM OF QUOTED GST %.
16. BIDDER SHALL SUBMIT THE FOLLOWING DOCUMENTS ALONG WITH THEIR BID FOR VENDOR CODE CREATION:  
**A. COPY OF PAN CARD B. COPY OF GSTIN C. COPY OF MSE CERIFICATE**
17. DEDICATED /TOLL FREE TELEPHONE NO. FOR SERVICE SUPPORT: BIDDER/OEM MUST HAVE DEDICATED/TOLL FREE TELEPHONE NO. FOR SERVICE SUPPORT.
18. DATA SHEET OF THE PRODUCT(S) OFFERED IN THE BID, ARE TO BE UPLOADED ALONG WITH THE BID DOCUMENTS. BUYERS CAN MATCH AND VERIFY THE DATA SHEET WITH THE PRODUCT SPECIFICATIONS OFFERED. IN CASE OF ANY UNEXPLAINED MISMATCH OF TECHNICAL PARAMETERS, THE BID IS LIABLE FOR REJECTION.
19. SCOPE OF SUPPLY (BID PRICE TO INCLUDE ALL COST COMPONENTS): ONLY SUPPLY OF GOODS.
20. PRODUCTS SUPPLIED SHALL BE NONTOXIC AND HARMLESS TO HEALTH. IN THE CASE OF TOXIC MATERIALS, MATERIAL SAFETY DATA SHEET MAY BE FURNISHED ALONG WITH THE MATERIAL.
21. WHILE GENERATING INVOICE IN GEM PORTAL, THE SELLER MUST UPLOAD SCANNED COPY OF GST INVOICE AND THE SCREENSHOT OF GST PORTAL CONFIRMING PAYMENT OF GST.

**22. PAYMENT TERMS SHALL BE AS PER FOLLOWINGS:**

- a) **FOR NON-MSME (MICRO, SMALL & MEDIUM ENTERPRISES) BIDDERS:** 100% PAYMENT ALONG WITH TAXES, FREIGHT & INSURANCE WILL BE MADE AFTER RECEIPT AND ACCEPTANCE OF MATERIAL AND WITHIN 90 DAYS FROM THE DATE OF INVOICE SUBJECT TO SUBMISSION OF NON-DISCREPANT DOCUMENTS WITHIN 15 DAYS OF SUPPLY AS PER TERMS AND CONDITIONS OF PURCHASE ORDER (THIS IS IN SUPERSESSION OF 10 DAYS' TIME AS PROVIDED IN CLAUSE 12 OF GEM GTC).
- b) **FOR MSE (MICRO & SMALL ENTERPRISES) BIDDER:** FOR MSES (COVERED UNDER MSME ACT) WHICH ARE REGISTERED AND PERIODICALLY RENEWED WITH BHEL, THE PAYMENT WILL BE MADE WITHIN 45 DAYS OR AS PRESCRIBED IN THE RELEVANT ACT. BENEFITS OF MSE (SUCH AS EMD WAIVER, TENDER FEE EXEMPTION, PRICE PREFERENCE, PAYMENT PREFERENCE ETC.) WILL BE GIVEN ONLY TO THOSE MSE VENDORS WHO ARE MANUFACTURERS OF OFFERED ITEMS AGAINST THE NIT. NO MSE BENEFITS SHALL BE PROVIDED TO AGENTS / STOCKISTS /DEALERS / TRADERS ETC. FOR THE ITEMS OFFERED BUT NOT MANUFACTURED BY THEMSELVES."
- c) **FOR ME (MEDIUM ENTERPRISES) BIDDER:** 100% PAYMENT ALONG WITH TAXES, FREIGHT & INSURANCE WILL BE MADE AFTER RECEIPT AND ACCEPTANCE OF MATERIAL AND WITHIN 60 DAYS FROM THE DATE OF INVOICE SUBJECT TO SUBMISSION OF NON-DISCREPANT DOCUMENTS WITHIN 15 DAYS OF SUPPLY AS PER TERMS AND CONDITIONS OF PURCHASE ORDER.
- d) PLEASE NOTE THAT VENDOR TO ADHERE TO THE PAYMENT TERMS AS PER ABOVE. NO DEVIATION IN PAYMENT TERMS SHALL BE ACCEPTED. VENDOR TO SUBMIT THEIR OFFER ACCORDINGLY.