



REQUIREMENT OF VALVE, FILTER DRAIN, ELECTRODISTRIBUTOR ETC.

The Heavy Electricals Equipment Plant (HEEP) located in Haridwar, India is one of the major manufacturing plants of Bharat Heavy Electricals Ltd. The core business of HEEP includes design and manufacture of large steam and gas turbines, turbo generators, Defense Items and so on.

Details of items details as below:

Sl. NO.	MAT CODE	ITEM DISCREPTION	Quantity (Nos.)	Delivery (Days)
1	W97011101063	VALVE, REGULATOR, FLOW N.STD:AS PER DRAWING SIZE: 1576-18-211-00	2	45
2	W97011401032	FILTER, DRAINING TYPE:DF BN/HC 60 G 20 B1.0/-B6 N.STD:HYDAC MAKE SIZE: 1576-18-137	3	45
3	W97011401040	FILTER, DRAIN N.STD:HYDAC MAKE SIZE: 1576-18-275-03	2	45
4	W97034301034	VALVE ELECTRODISTRIBUTOR TYPE 3SV 3E3 C.O G24N - MIL AS PER DRAWING 1576-55-100-00 N.STD:FLUTEC MAKE SIZE: P/N 157655100	5	45
5	W97034901031	HYDRAULIC ACTUATOR BOX TYPE 3SV 3E3 C.O G24N - MIL TYPE RUAL AR 1164 AS PER DRAWING 1576-55-101-00 N.STD:AS PER DRAWING SIZE: P/N 1576-55-101	4	45
6	W97056801048	MOTOR TYPE E-MOT.IMB5/V1, 0.25 KW HAVING SPEED OF 895 RPM AT 50 HZ AND 1115 RPM AT 60 HZ. SUPPLIER PART NO.- 637560 OF HYDAC OR EQUIVALENT N.STD:- SIZE: P/N 157618437	4	45
7	W97056801064	OIL COOLING UNIT, MODEL NO. SCAF 0S/10/1.0B/M/A/LF60/4/1 INCLUDING ELECTRIC MOTOR (PART NO 637560) N.STD:HYDAC MAKE SIZE: 157618033 DIM.: -	1	45
8	W97011401156	FILTER CARTRIDGE, MODEL: 0165 R 010 ON OF HYDAC OR EQUIVALENT SIZE: P/N 157618359	6	45

1. ALL VENDORS TO PROVIDE POINT WISE REPLY/CONFIRMATION ALONG WITH RELEVANT SUPPORTING DOCUMENTS TO EACH AND EVERY POINT OF PRE-QUALIFICATION REQUIREMENT/PQR FOR ALL ENQUIRY ITEMS. NONCOMPLIANCE OF THESE MAY LEAD TO REJECTION OF OFFER AS THESE ARE ESSENTIAL CONDITION FOR PARTICIPATING IN TENDER ENQUIRY
2. KINDLY UPLOAD/ATTACH THE SPECIFICATION DETAILS/ CATALOGUE OF OFFERED ITEMS.
3. KINDLY ARRANGE TO **SUBMIT TECHNO-COMMERCIAL CHECKLIST** ALONG WITH YOUR OFFER.
4. VENDOR TO CONFIRM TO PROVIDE CO-RELATED DOCUMENTS FOR VERIFICATION OF VALVE MAKE AND MODEL NO. ALONG WITH MATERIAL DISPATCH. IN CASE OF EQUIVALENT MATERIAL, VENDOR TO CONFIRM TO PROVIDE MATERIAL, DIMENSIONAL & HYDRAULIC TEST CERTIFICATES OF MATERIALS WITH TECHNICAL DATA SHEET MENTIONING ALL PARAMETERS AS PER ENQUIRY CHECK LIST.
5. VENDOR TO CONFIRM TO PROVIDE DOCUMENTS KEEP PROPER CORRELATION WITH PO ITEMS AND THEIR QUANTITY.
6. VENDOR TO CONFIRM TO PROVIDE CERTIFICATE OF CONFORMANCE IN ADDITION TO O.E.M. DOCUMENTS.
7. VENDOR TO CONFIRM TO PROVIDE NON REMOVABLE IDENTIFICATION OF ITEMS AND PROVIDE REPORT ACCORDINGLY.
8. EARLY DELIVERY IS ACCEPTABLE.
9. KINDLY SUBMIT MAKE IN INDIA SELF CERTIFICATION.

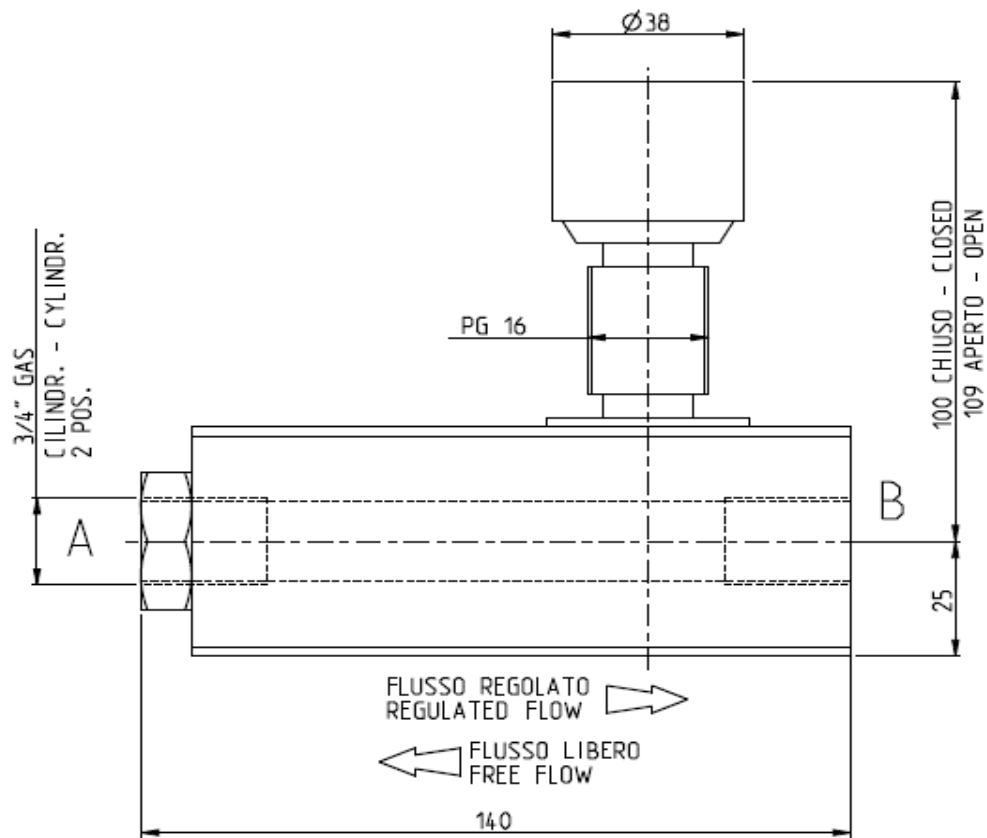
QUALIFYING CONDITIONS FOR FILTER, DIRECTIONAL VALVE AND ITS MOUNTING BODY, OIL COOLING UNIT, MOTOR, REGULATOR VALVE

Sl.	PQR Requirement	Action	Vendor Response (Yes / No)
1.	who can manufacture or supply, FILTER, , REGULATOR VALVE, OIL COOLING UNIT, MOTOR, DIRECTIONAL SEAT VALVE, , DIRECTIONAL SEAT VALVE MOUNTING BODY as per BHEL tender requirement.	Vendor to specify	
2.	Can provide Certificate of Conformance (COC) <i>(also known as Certificate of Conformity or Certificate of Compliance)</i>	Vendor to confirm	
3.	BHEL reserves the right to verify information submitted by vendor. In case the information is found to be false/incorrect, the offer shall be rejected.	Vendor to accept & confirm	

TECHNICAL PARAMETERS CHECK LIST
DATA VALUES TO BE FILLED AND CONFIRMED BY VENDOR

ITEM MATCODE W97011101063
ITEM NAME VALVE, REGULATOR, FLOW
ITEM PART NO P/N 1576-18-211
COMMERCIAL EQUIVALENTS MODEL SRVR 16.01.X/0 OF
RUAL OR EQUIVALENT

SN.	DESCRIPTION	SPECIFICATION	RESPONSE TYPE	VENDOR RESPONSE
1	VALVE TYPE	2 way flow Regulator Valve	To confirm →	
2	VALVE BODY	Carbon Steel	To confirm →	
3	Threaded Connection	3/4" Gas	Input Value →	
4	Working Pressure Inlet	102psi (min)/3045 psi (max)	Input Value →	
5	Working Pressure Outlet	0 psi (min)/2944 psi (max)	Input Value →	
5	OPERATING TEMPERATURE (MAX)	100 DEGREE C	Input Value →	
7	Viscosity Range	13 SUS (min)/1781 SUS (max)	Input Value →	
8	Flow	24 gallons per minute	Input Value →	
9	DIMENSIONS	AS PER DRAWING	To confirm →	
10	Finish	Phosphating	To confirm →	
11	Certification	Certificate of Compliance (COC)	To confirm →	
12	VENDOR REMARKS			



FLUSSO REGOLATO da A a B
REGULATED FLOW from A to B

POSIZ. MANOPOLA (KNOB POSITION)	0	2	4	6	8	10
PORTATA L/min FLOW RATE L/min	0	30	55	75	90	100

FLUSSO LIBERO da B ad A
FREE FLOW from B to A

PORTATA L/min FLOW RATE L/min	20	30	55	75	90	100
PERDITA PRESS.(bar) PRESS. DROP (bar)	1.8	2.7	5.5	8.5	11	14

Mat Code W97011101063

P/N 1576-18-211

- Note:
1. PAINT Except Threads and handle: Colour black paint Fed STD 27038, MIL C 83286 Primer MIL P 53022
 2. Protect thread PG16 with Chesterton 740 Grease or equivalent

TECHNICAL PARAMETERS CHECK LIST
DATA VALUES TO BE FILLED AND CONFIRMED BY VENDOR

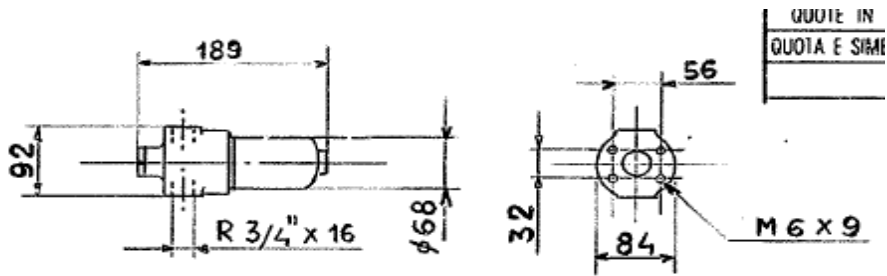
ITEM MATCODE W97011401032

ITEM NAME FILTER, DRAINING

ITEM PART NO P/N 1576-18-137

COMMERCIAL EQUIVALENTS MODEL FOR FILTER: DF ON 60T C20 A1.0/ B6 OF
 HYDAC

MODEL FOR CARTRIDGE: 0060 D 020 BN OF HYDAC



SN.	DESCRIPTION	SPECIFICATION	RESPONSE TYPE	VENDOR RESPONSE
1	ITEM	Inline filter	To confirm →	
2	MOUNTING TYPE	4 HOLES	To confirm →	
3	FILTER SIZE	60	To confirm →	
4	PRESSURE RANGE	420 BAR	To confirm →	
5	Size and Nominal Connection	3/4" Threaded	To confirm →	
6	Port Configuration	BSP	To confirm →	
6	FILTRATION RATE	20 micron-meter	To confirm →	
7	FILTER ELEMENT	Betamicon (BN/HC) OR OPTIMICRON (ON)	To confirm →	
8	CLOGGING INDICATOR	no indicator, plugged port	To confirm →	
9	Bypass Valve Pressure	6 bar	To confirm →	
9	OPERATING TEMPERATURE	Min. - 30 °C Max. + 121 °C	Input Value →	
10	CERTIFICATIONS	Certificate of Conformance / Compliance (COC)	Confirm to supply →	
11	VENDOR REMARKS			

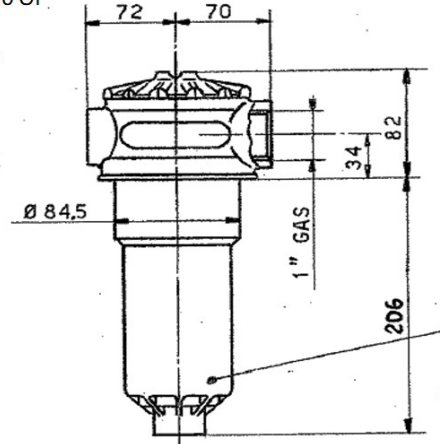
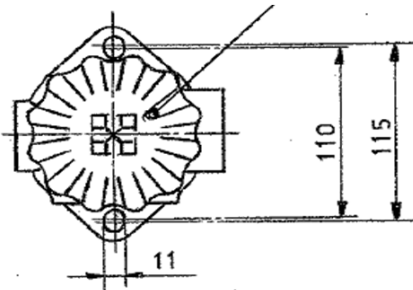
TECHNICAL PARAMETERS CHECK LIST
DATA VALUES TO BE FILLED AND CONFIRMED BY VENDOR

ITEM MATCODE W97011401040

ITEM NAME FILTER, DRAIN

ITEM PART NO P/N 157618275

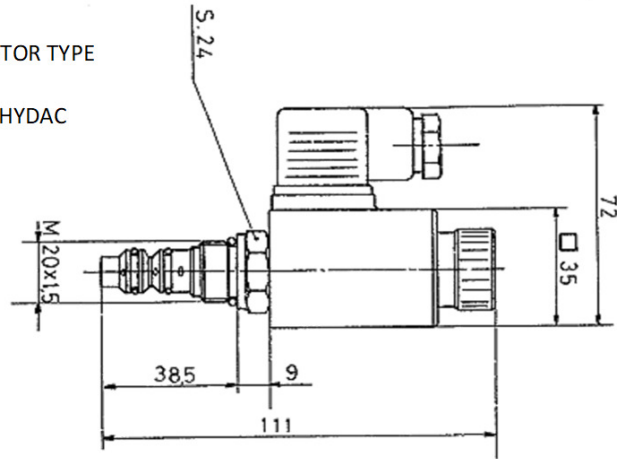
COMMERCIAL EQUIVALENTS MODEL FOR FILTER: RFM BN/HC 0165 BD 10 AZ 0 OF
 HYDAC
 MODEL FOR CARTRIDGE: EL.0165 R.010 BN-3 OF
 HYDAC

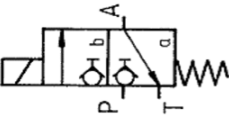


SN.	DESCRIPTION	SPECIFICATION	RESPONSE TYPE	VENDOR RESPONSE
1	ITEM	RETURN LINE FILTER	To confirm →	
2	MOUNTING TYPE	2 HOLES	To confirm →	
3	FILTER SIZE	165	To confirm →	
4	OPERATING PRESSURE	10 BAR	To confirm →	
5	TYPE AND SIZE OF PORT	TYPE=D; PORT= G 1"	To confirm →	
6	FILTRATION RATE	10 micron-meter	To confirm →	
7	FILTER ELEMENT	Betamicon (BN/HC) OR OPTIMICRON (ON)	To confirm →	
8	CLOGGING INDICATOR	STEEL BLANKING PLUG IN INDICATOR PORT	To confirm →	
9	OPERATING TEMPERATURE	Min. - 30 °C Max. + 100 °C	Input Value →	
10	CERTIFICATIONS	Certificate of Conformance / Compliance (COC)	Confirm to supply →	
11	VENDOR REMARKS			

TECHNICAL PARAMETERS CHECK LIST
DATA VALUES TO BE FILLED AND CONFIRMED BY VENDOR

ITEM MATCODE W97034301034
 ITEM NAME VALVE. ELECTRO DISTRIBUTOR TYPE
 ITEM PART NO P/N 157655100
 COMMERCIAL EQUIVALENTS WSE 3E0C.X/G24-Z4-N OF HYDAC



SN.	DESCRIPTION	SPECIFICATION	RESPONSE TYPE	VENDOR RESPONSE
1	VALVE TYPE	DIRECTIONAL SEAT VALVE	To confirm →	
2	DIMENSIONS#	AS PER ABOVE SKETCH	To confirm →	
3	MATERIAL FOR VALVE SEATS, CLOSING ELEMENTS AND ACTUATING ELEMENTS	HARDENED STEEL	To confirm →	
4	TYPE OF OPERATION	SOLENOID OPERATED	To confirm →	
5	OPERATION PRESSURE	500 BAR	Input Value →	
6	OPERATING TEMPERATURE	Min. - 20 °C Max. + 80 °C	Input Value →	
7	FLOW RATE	12 L/min	Input Value →	
8	TYPE OF CONNECTION	CARTRIDGE VALVE	To confirm →	
9	FLOW MECHANISM  <p>P to A normally closed. 3/2 directional seat valve, P is closed and leakage free, A to T is open (switching position a). When the solenoid is actuated, P to A is opened and port T is closed and leakage free (switching position b). Flow is only permissible in direction of arrow.</p>	To confirm →		
10	CURRENT	DC	To confirm →	
11	VOLTAGE	24V (+10 % / - 5%)	Input Value →	
12	ELECTRICAL CONNECTIONS FOR ACTUATING SOLENOID	CONNECTOR AS PER DIN 43650-AF2-PG9	To confirm →	
13	SWITCHING TIME	switch-on time: 40 ms, switch-off time: 45 ms	Input Value →	
14	EMERGENCY OPERATION	PIN TYPE	To confirm →	
15	CERTIFICATIONS	Certificate of Conformance / Compliance (COC)	Confirm to supply →	
VENDOR REMARKS				

Outer dimensions should be strictly as per above sketch. Offers not meeting these dimensions will be rejected.

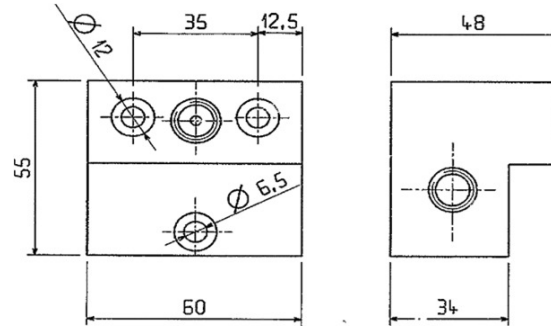
TECHNICAL PARAMETERS CHECK LIST
DATA VALUES TO BE FILLED AND CONFIRMED BY VENDOR

ITEM MATCODE W97034901031

ITEM NAME HYDRAULIC ACTUATOR BOX TYPE

ITEM PART NO P/N 157655101

COMMERCIAL EQUIVALENTS FOR DIRECTIONAL SEAT VALVE MODEL:WSE
 3E0C.X/G24-Z4-N OF HYDAC



SN.	DESCRIPTION	SPECIFICATION	RESPONSE TYPE	VENDOR RESPONSE
1	ITEM	MOUNTING BODY DIRECTIONAL SEAT VALVE MODEL:WSE 3E0C.X/G24-Z4-N OF HYDAC	To confirm →	
2	DIMENSIONS#	AS PER ABOVE SKETCH	To confirm →	
3	MATERIAL FOR VALVE SEATS, CLOSING ELEMENTS AND ACTUATING ELEMENTS	HARDENED STEEL	To confirm →	
4	FINSIH	HARD ANODIC COATING	To confirm →	
5	CERTIFICATIONS	Certificate of Conformance / Compliance (COC)	Confirm to supply →	
6	VENDOR REMARKS			

Outer dimensions should be strictly as per above sketch. Offers not meeting these dimensions will be rejected.

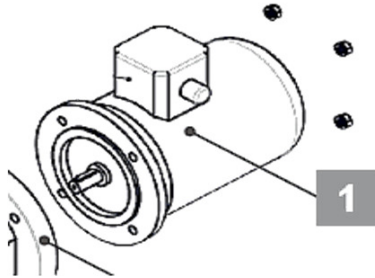
TECHNICAL PARAMETERS CHECK LIST
DATA VALUES TO BE FILLED AND CONFIRMED BY VENDOR

ITEM MATCODE W97056801048

ITEM NAME MOTOR TYPE E-MOT.IMB5/V1, 0.25 KW

ITEM PART NO P/N 157618437

COMMERCIAL EQUIVALENTS PART NO.- 637560 OF HYDAC



SN.	DESCRIPTION	SPECIFICATION	RESPONSE TYPE	VENDOR RESPONSE
1	ITEM	ELECTRIC MOTOR	To confirm →	
2	POWER	0.25 KW	To confirm →	
3	NO. OF POLES	6	To confirm →	
4	SIZE	71	To confirm →	
5	SPEED	900 RPM	To confirm →	
6	IM CLASS	B5 with drive side flange, through holes	Input Value →	
7	OPERATING VOLTAGE	230/400 V – 50 Hz / 265/460 V – 60 Hz	Input Value →	
7	NOMINAL CURRENT @ 400 V 50 HZ	1 AMPERE	Input Value →	
8	NOISE LEVEL AT 1 METER	56-60 dBA	Input Value →	
9	CERTIFICATIONS	Certificate of Conformance / Compliance (COC)	Confirm to supply →	
8	VENDOR REMARKS			

TECHNICAL PARAMETERS CHECK LIST
DATA VALUES TO BE FILLED AND CONFIRMED BY VENDOR

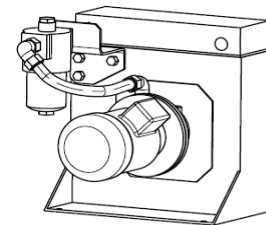
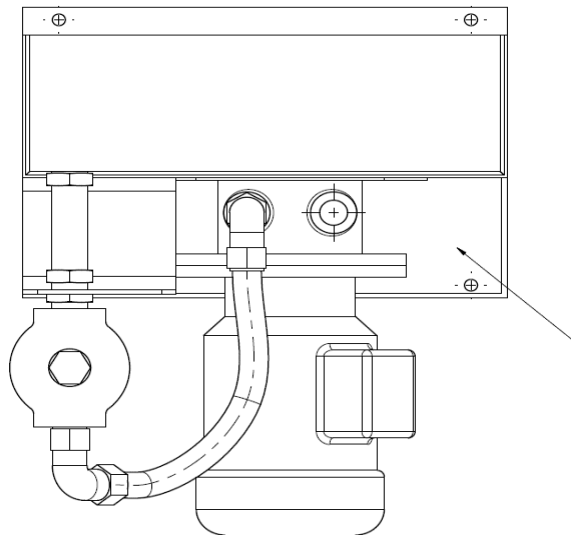
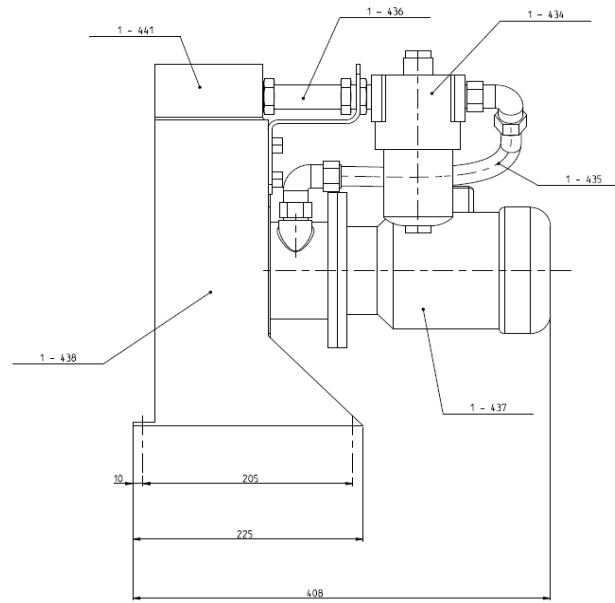
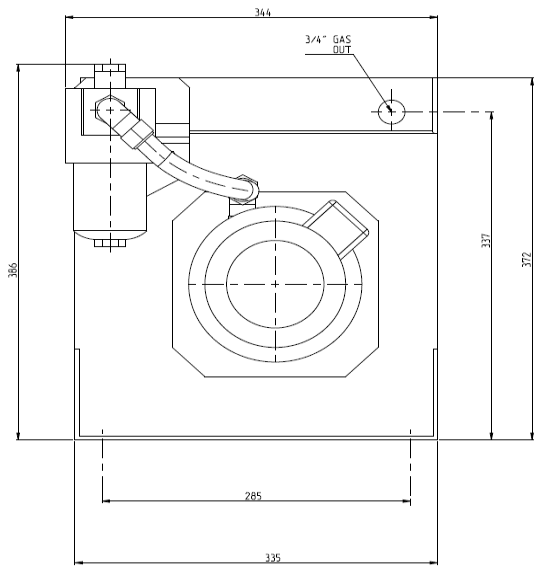
ITEM MATCODE W97056801064

ITEM NAME OIL COOLING UNIT INCLUDING
ELECTRIC MOTOR

ITEM PART NO P/N 157618033

COMMERCIAL EQUIVALENTS MODEL SCAF 0S/10/1.0B/M/A/LF60/4/1 OF HYDAC
OR EQUIVALENT

SN.	DESCRIPTION	SPECIFICATION	RESPONSE TYPE	VENDOR RESPONSE
1	Item	OIL COOLING UNIT INCLUDING ELECTRIC MOTOR	To confirm →	
2	Type of cooler	Oil/air cooler with built-in feed pump and filter	To confirm →	
3	N° of poles [-] / size [-]	4/71	To confirm →	
4	Motor speed	900 rev/min	Input Value →	
5	Displacement	10 cm ³ /rev	Input Value →	
6	Clogging indicators	Visual Indicator	Input Value →	
7	Fluids	Mineral oil to DIN 51524	Input Value →	
8	Motor voltage	Standard voltages and frequencies for three-phase motor 50 Hz: 380 - 420 V (Y) / 220-240 V (Δ) 60 Hz: 440 - 480 V (Y) / 254-277 V (Δ)	Input Value →	
9	Size of filter	LF60	Input Value →	
10	Oil Flow	13L/min	Input Value →	
11	Motor capacity	0.25 [kW]	Input Value →	
12	Max. operating pressure [bar]	6 bar	Input Value →	
13	Max. oil temperature	80 [°C]	Input Value →	
14	Max. Viscosity	180 mm ² /s	Input Value →	
15	DIMENSIONS	AS PER DRAWING	To confirm →	
16	Filtration rating	10 μm Betamicron®-3-N	To confirm →	
17	Paint	RAL 5009 (Standard)	To confirm →	
18	Certification	Certificate of Compliance (COC)	To confirm →	
19	VENDOR REMARKS			



Mat Code W97056801064

P/N 157618033

BOM

Sl no	P/N	Description	Commercial Equivalent
	157618033	Oil Cooling Unit	HYDAC SCAF 0S/10/1.0B/M/A/LF60/4/1
1	157618434	Cartridge	Hydac 1250487
2	157618435	Flexible Hose	Hydac 3050914
3	157618436	Flexible Hose	Hydac 3049194
4	157618437	Motor 900rpm, 0.25kw	Hydac 637560
5	157618438	Pump	Hydac 723108
6	157618441	Radiator	Hydac 3078640

Mat Code W97056801064

P/N 157618033

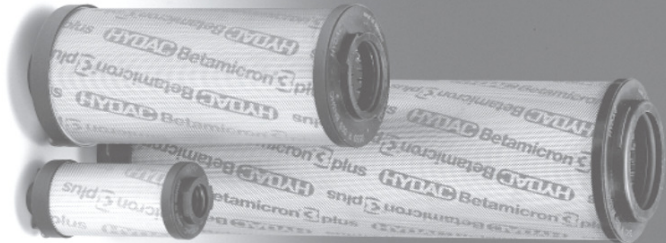
**TECHNICAL PARAMETERS CHECK LIST
DATA VALUES TO BE FILLED AND CONFIRMED BY VENDOR**

ITEM MATCODE W97011401156

ITEM NAME FILTER CARTRIDGE

ITEM PART NO P/N 157618359

COMMERCIAL EQUIVALENTS MODEL: 0165 R 010 ON OF HYDAC



SN.	DESCRIPTION	SPECIFICATION	RESPONSE TYPE	VENDOR RESPONSE
1	ITEM	CARTRIDGE FILTER ELEMENT	To confirm →	
2	SIZE	165	To confirm →	
3	FILTRATION RATE	10 micron-meter	To confirm →	
4	FILTER ELEMENT	Betamicon (BN/HC) OR OPTIMICRON (ON)	To confirm →	
5	CRACKING PRESSURE OF BYPASS VALVE	3 + 0.5 BAR	Input Value →	
6	OPERATING TEMPERATURE	Min. - 30 °C Max. + 100 °C	Input Value →	
7	CERTIFICATIONS	Certificate of Conformance / Compliance (COC)	Confirm to supply →	
8	VENDOR REMARKS			

TECHNO-COMMERCIAL CHECKLIST

SL. NO.	TERMS & CONDITION	VENDOR CONFIRMATION /REMARKS / REPLY
1	BIDDER NAME	
2	GEM BID NO	
3	ITEM IS TO BE SUPPLIED AS PER TECHNICAL SPECIFICATION	
4	ALL VENDORS TO PROVIDE POINT WISE REPLY/CONFIRMATION ALONG WITH RELEVANT SUPPORTING DOCUMENTS TO EACH AND EVERY POINT OF PRE-QUALIFICATION REQUIREMENT/PQR FOR ALL ENQUIRY ITEMS. NONCOMPLIANCE OF THESE MAY LEAD TO REJECTION OF OFFER AS THESE ARE ESSENTIAL CONDITION FOR PARTICIPATING IN TENDER ENQUIRY	
5	KINDLY UPLOAD/ATTACH THE SPECIFICATION DETAILS/ CATALOGUE OF OFFERED ITEMS.	
6	KINDLY ARRANGE TO SUBMIT TECHNO-COMMERCIAL CHECKLIST ALONG WITH YOUR OFFER.	
7	VENDOR TO CONFIRM TO PROVIDE CO-RELATED DOCUMENTS FOR VERIFICATION OF VALVE MAKE AND MODEL NO. ALONG WITH MATERIAL DISPATCH. IN CASE OF EQUIVALENT MATERIAL, VENDOR TO CONFIRM TO PROVIDE MATERIAL, DIMENSIONAL & HYDRAULIC TEST CERTIFICATES OF MATERIALS WITH TECHNICAL DATA SHEET MENTIONING ALL PARAMETERS AS PER ENQUIRY CHECK LIST.	
8	VENDOR TO CONFIRM TO PROVIDE DOCUMENTS KEEP PROPER CORRELATION WITH PO ITEMS AND THEIR QUANTITY.	
9	VENDOR TO CONFIRM TO PROVIDE CERTIFICATE OF CONFORMANCE IN ADDITION TO O.E.M. DOCUMENTS.	
10	VENDOR TO CONFIRM TO PROVIDE NON REMOVABLE IDENTIFICATION OF ITEMS AND PROVIDE REPORT ACCORDINGLY.	
11	KINDLY SUBMIT MAKE IN INDIA SELF CERTIFICATION	
12	RISK PURCHASE: IN CASE OF ABNORMAL DELAYS (BEYOND THE MAXIMUM LATE DELIVERY PERIOD AS PER LD CLAUSE) IN SUPPLIES / DEFECTIVE SUPPLIES OR NONFULFILLMENT OF ANY OTHER TERMS AND CONDITIONS GIVEN IN PURCHASE ORDER, BHEL MAY CANCEL THE PURCHASE ORDER IN FULL OR PART THEREOF, AND MAY ALSO MAKE THE PURCHASE OF SUCH MATERIAL FROM ELSEWHERE / ALTERNATIVE SOURCE AT THE RISK AND COST OF THE SUPPLIER. BHEL WILL TAKE ALL REASONABLE STEPS TO GET THE MATERIAL FROM ALTERNATE SOURCE AT OPTIMUM COST. IF BIDDER DOES NOT AGREE TO THE ABOVE RISK PURCHASE CLAUSE, BHEL RESERVES THE RIGHT TO REJECT THE OFFER. IN CASE FOR COMPELLING REASONS BHEL ACCEPTS THE OFFER WITHOUT ACCEPTANCE OF THIS CLAUSE BY THE BIDDER AND IN THE EVENTUALITY OF RISK PURCHASE, APPROPRIATE ACTION WILL BE TAKEN AS PER BHEL EXTANT RULES. THIS WILL BE WITHOUT PREJUDICE TO ANY OTHER RIGHT OF BHEL UNDER THE CONTRACT OR UNDER GENERAL LAW.	
13	ACTION AGAINST BIDDERS / VENDOR / SUPPLIER / CONTRACTOR IN CASE OF DEFAULT: IN ORDER TO PROTECT THE COMMERCIAL INTERESTS OF BHEL, BHEL SHALL TAKE ACTION AGAINST SUPPLIES / CONTRACTORS BY WAY OF SUSPENSION OF BUSINESS DEALINGS, WHO EITHER FAIL TO PERFORM OR ARE IN DEFAULT WITHOUT ANY REASONABLE CAUSE, CAUSE LOSS OF BUSINESS/ MONEY/ REPUTATION, INDULGE IN MALPRACTICES, CHEATING, BRIBERY, FRAUD OR ANY OTHER MISCONDUCT OR FORMATION OF CARTELS SO AS TO INFLUENCE THE BIDDING PROCESS OR INFLUENCE THE PRICE ETC. SUSPENSION OF BUSINESS DEALINGS COULD BE IN THE FORM OF “HOLD” OR “BANNING” A SUPPLIER/ CONTRACTOR OR A BIDDER AND SHALL BE AS PER “GUIDELINES FOR SUSPENSION OF BUSINESS DEALINGS WITH SUPPLIERS/ CONTRACTORS” AVAILABLE AT BHEL’S WEBSITE “ https://www.bhel.com/guidelines-suspension-business-dealings-supplierscontractors ”	

MAKE IN INDIA SELF CERTIFICATION

As per Government Public procurement order no. P-45021/2/2017-BE-II dt.15.06.2017 & P45021/2/2017-PP(BE-II) dated 28.05.2018,29.5.2019, 04.6.2020 and amendment dated 16.09.2020, it is hereby certifying that we

.....
..... (supplier name) are(Class-I/Class-II)
local supplier and will meet the requirement of minimum local content of
(50%/20%) as defined in public procurement order dated 04.6.2020 for material against Enquiry no.
..... Details of
location at which local value addition will be made is as follows: -
.....
.....
.....

We also understand, false declarations will be in breach of the code of integrity under Rule 175(1)(i)(h) of the General Financial Rules for which a bidder or its successors can be debarred for up to two years as per Rule 151 (iii) of the general financial rules along with such other actions as may be permissible under law.

Note:

As per office order P-45021/102/2019-BE-II-Part (1) (E-50310) Dated 04/03/2021, Bidders can't claim itself as "Class-I local supplier/Class-II local suppliers" by claiming the service such as transportation, insurance, installation, commissioning, training & after sales service support like AMC/CMC etc. as local value addition. Bidder offering imported product will fall under the category of Non-Local supplier.