



REQUIREMENT OF VALVE, FILTER ETC.

The Heavy Electricals Equipment Plant (HEEP) located in Haridwar, India is one of the major manufacturing plants of Bharat Heavy Electricals Ltd. The core business of HEEP includes design and manufacture of large steam and gas turbines, turbo generators, Defense Items and so on.

Details of items details as below:

| SLN | MAT CODE | ITEM DISCREPTION | TOTAL QUANTITY (NOS.) | LOT | LOT QTY (NOS.) | DELIVERY. SCHEDULE |
|-----|----------------|--|-----------------------|-----------------|----------------|--------------------|
| 1 | W97011101063 | VALVE, REGULATOR, FLOW N.STD:AS PER DRAWING SIZE: 1576-18-211-00 | 4 | 1 ST | 4 | 31-10-24 |
| 2 | W97011401113 | RETURN FILTER, MODEL NO: LF ON 0330 I F 20 A1.0/-B6 OF HYDAC OR EQUIVALENT SIZE: P/N 157618130 | 29 | 1 ST | 11 | 31-10-24 |
| 3 | W97011401113_1 | RETURN FILTER, MODEL NO: LF ON 0330 I F 20 A1.0/-B6 OF HYDAC OR EQUIVALENT SIZE: P/N 157618130 | | 2 ND | 10 | 31-10-25 |
| 4 | W97011401113_2 | RETURN FILTER, MODEL NO: LF ON 0330 I F 20 A1.0/-B6 OF HYDAC OR EQUIVALENT SIZE: P/N 157618130 | | 3 rd | 8 | 31-10-26 |
| 5 | W97011401032 | FILTER, DRAINING TYPE:DF BN/HC 60 G 20 B1.0/-B6 N.STD:HYDAC MAKE | 28 | 1 ST | 10 | 31-10-24 |
| 6 | W97011401032_1 | FILTER, DRAINING TYPE:DF BN/HC 60 G 20 B1.0/-B6 N.STD:HYDAC MAKE | | 2 ND | 10 | 31-10-25 |
| 7 | W97011401032_2 | FILTER, DRAINING TYPE:DF BN/HC 60 G 20 B1.0/-B6 N.STD:HYDAC MAKE | | 3 rd | 8 | 31-10-26 |
| 8 | W97011401040 | FILTER, DRAIN N.STD:HYDAC MAKE SIZE: 1576-18-275-03 | 24 | 1 ST | 11 | 31-10-24 |
| 9 | W97011401040_1 | FILTER, DRAIN N.STD:HYDAC MAKE SIZE: 1576-18-275-03 | | 2 ND | 13 | 31-10-25 |
| 10 | W97011401121 | FILTER CARTRIDGE, MODEL: 0060 D 020 ON OF HYDAC OR EQUIVALENT SIZE: P/N 157618261 | 10 | 1 ST | 10 | 31-10-24 |
| 11 | W97011401130 | FILTER CARTRIDGE MODEL: 0330 D 020 ON OF HYDAC OR EQUIVALENT SIZE: P/N 157618262 | 10 | 1 ST | 10 | 31-10-24 |
| 12 | W97011401156 | FILTER CARTRIDGE, MODEL: 0165 R 010 ON OF HYDAC OR EQUIVALENT SIZE: P/N 157618359 | 23 | 1 ST | 23 | 31-10-24 |

| | | | | | | |
|----|----------------|--|----|-----------------|----|----------|
| 13 | W97034301034 | VALVE. ELECTRODISTRIBUTOR TYPE 3SV 3E3 C.O G24N - MIL AS PER DRAWING 1576-55- 100-00 N.STD:FLUTEC MAKE SIZE: P/N 157655100 | 37 | 1 ST | 15 | 31-10-24 |
| 14 | W97034301034_1 | VALVE. ELECTRODISTRIBUTOR TYPE 3SV 3E3 C.O G24N - MIL AS PER DRAWING 1576-55- 100-00 N.STD:FLUTEC MAKE SIZE: P/N 157655100 | | 2 ND | 14 | 31-10-25 |
| 15 | W97034301034_2 | VALVE. ELECTRODISTRIBUTOR TYPE 3SV 3E3 C.O G24N - MIL AS PER DRAWING 1576-55- 100-00 N.STD:FLUTEC MAKE SIZE: P/N 157655100 | | 3 rd | 8 | 31-10-26 |
| 16 | W97034302014 | CHECK VALVE, MODEL NO: RVE-R3/8-X-0.5 OF HYDAC OR EQUIVALENT N.STD:- SIZE: P/N 157611159 | 3 | 1 ST | 3 | 31-10-24 |
| 17 | W97034901031 | HYDRAULIC ACTUATOR BOX TYPE 3SV 3E3 C.O G24N - MIL TYPE RUAL AR 1164 AS PER DRAWING 1576-55- 101-00 N.STD:AS PER DRAWING SIZE: P/N 1576-55-101 | 33 | 1 ST | 13 | 31-10-24 |
| 18 | W97034901031_1 | HYDRAULIC ACTUATOR BOX TYPE 3SV 3E3 C.O G24N - MIL TYPE RUAL AR 1164 AS PER DRAWING 1576-55- 101-00 N.STD:AS PER DRAWING SIZE: P/N 1576-55-101 | | 2 ND | 12 | 31-10-25 |
| 19 | W97034901031_2 | HYDRAULIC ACTUATOR BOX TYPE 3SV 3E3 C.O G24N - MIL TYPE RUAL AR 1164 AS PER DRAWING 1576-55- 101-00 N.STD:AS PER DRAWING SIZE: P/N 1576-55-101 | | 3 rd | 8 | 31-10-26 |
| 20 | W97056801048 | MOTOR TYPE E- MOT.IMB5/V1, 0.25 KW HAVING SPEED OF 895 RPM AT 50 HZ AND 1115 RPM AT 60 HZ. SUPPLIER PART NO.- 637560 OF HYDAC OR EQUIVALENT | 24 | 1 ST | 8 | 31-10-24 |
| 21 | W97056801048_1 | MOTOR TYPE E- MOT.IMB5/V1, 0.25 KW HAVING SPEED OF 895 RPM AT 50 HZ AND 1115 RPM AT 60 HZ. SUPPLIER PART NO.- 637560 OF HYDAC OR EQUIVALENT | | 2 ND | 8 | 31-10-25 |

| | | | | | | |
|----|----------------|---|--|-----------------|---|----------|
| 22 | W97056801048_2 | MOTOR TYPE E- MOT.IMB5/V1, 0.25 KW HAVING SPEED OF 895 RPM AT 50 HZ AND 1115 RPM AT 60 HZ. SUPPLIER PART NO.- 637560 OF HYDAC OR EQUIVALENT | | 3 rd | 8 | 31-10-26 |
|----|----------------|---|--|-----------------|---|----------|

1. EARLY DELIVERY IS ACCEPTABLE FOR LOT 1.
2. EARLY DELIVERY ACCEPTABLE 2 MONTHS BEFORE SCHECHDULED DATE FOR LOT 2 & 3.
3. ALL VENDORS TO PROVIDE POINT WISE REPLY/CONFIRMATION ALONG WITH RELEVANT SUPPORTING DOCUMENTS TO EACH AND EVERY POINT OF **PRE-QUALIFICATION REQUIREMENT/PQR** FOR ALL ENQUIRY ITEMS. NONCOMPLIANCE OF THESE MAY LEAD TO REJECTION OF OFFER AS THESE ARE ESSENTIAL CONDITION FOR PARTICIPATING IN TENDER ENQUIRY.
4. KINDLY UPLOAD/ATTACH THE SPECIFICATION DETAILS/ CATALOGUE OF OFFERED ITEMS.
5. KINDLY **SUBMIT TECHNO-COMMERCIAL CHECKLIST** ALONG WITH YOUR OFFER.
6. KINDLY **SUBMIT TECHNICAL PARAMETERS CHECK LIST** ALONG WITH YOUR OFFER.
7. VENDOR TO CONFIRM TO PROVIDE TEST CERTIFICATES AS PER ORIGINAL EQUIPMENT MANUFACTURER'S STANDARD PRACTICE INCLUDING DOCUMENTS COFORMING TO ENQUIRY MAKE/MODEL/PART NO. ALONG WITH THE MATERIAL.
8. VENDOR TO CONFIRM TO PROVIDE CERTIFICATE OF CONFORMANCE ALONG WITH MATERIAL DISPATCH.
9. VENDOR TO CONFIRM TO PROVIDE NON-REMOVABLE IDENTIFICATION OF ITEMS AND THEIR REPORT ACCORDINGLY.
10. VENDOR TO SUBMIT MAKE IN INDIA SELF CERTIFICATION AS PER FORMAT GIVEN ALONG WITH THE ENQUIRY.

QUALIFYING CONDITIONS for HYDAC MAKE FILTERS, VALVES & MOTORS

| Sl. | PQR Requirement | Action | Vendor Response (Yes / No) |
|------------|--|----------------------------|---------------------------------------|
| 1. | who have manufactured or supplied HYDAC MAKE FILTERS, FILTER CATRIDGE, VALVES, VALVE REGULATOR, & MOTORS as per BHEL tender requirement or their equivalentents. | Vendor to specify | |
| 2. | Can provide Certificate of Conformance (COC) (<i>also known as Certificate of Conformity or Certificate of Compliance</i>) | Vendor to confirm | |
| 3. | BHEL reserves the right to verify information submitted by vendor. In case the information is found to be false/incorrect, the offer shall be rejected. | Vendor to accept & confirm | |

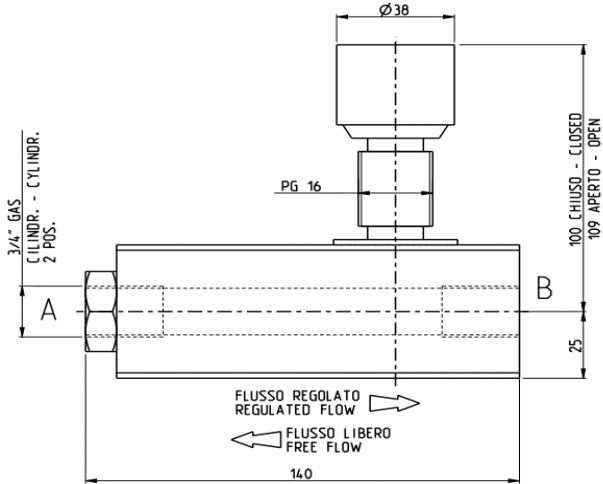
TECHNICAL PARAMETERS CHECK LIST
DATA VALUES TO BE FILLED AND CONFIRMED BY VENDOR

ITEM MATCODE W97011101063

ITEM NAME FLOW REGULATOR VALVE

ITEM PART NO P/N 157618211

COMMERCIAL EQUIVALENTS MODEL:SRVR 16.01.X/0 OF RUAL-HYDAC



REGULATED FLOW from A to B

| | | | | | | |
|-----------------|---|----|----|----|----|-----|
| (KNOB POSITION) | 0 | 2 | 4 | 6 | 8 | 10 |
| FLOW RATE L/min | 0 | 30 | 55 | 75 | 90 | 100 |

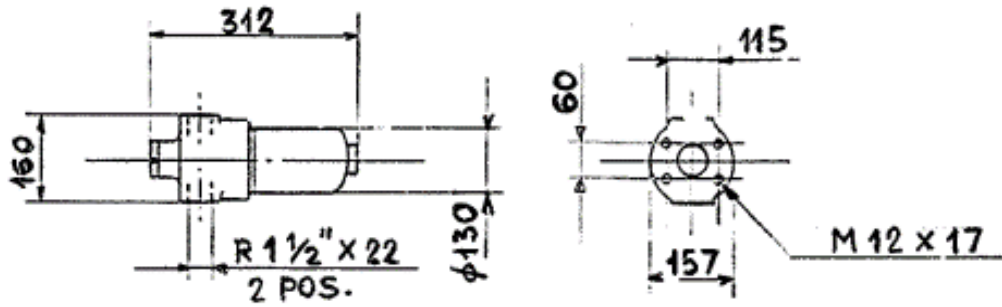
FREE FLOW from B to A

| | | | | | | |
|-------------------|-----|-----|-----|-----|----|-----|
| FLOW RATE L/min | 20 | 30 | 55 | 75 | 90 | 100 |
| PRESS. DROP (bar) | 1.8 | 2.7 | 5.5 | 8.5 | 11 | 14 |

| SN. | DESCRIPTION | SPECIFICATION | RESPONSE TYPE | VENDOR RESPONSE |
|-----|--------------------|---|---------------------|-----------------|
| 1 | ITEM | Flow Regulator Valve | To confirm → | |
| 2 | Working Pressure | Inlet: 102 psi (Min) to 3045 psi (Max) Outlet: 0 psi (Min) to 2944 psi (Max) | Input Value → | |
| 3 | Port Configuration | 3/4 " GAS | Input Value → | |
| 4 | Housing Material | Carbon steel | Input Value → | |
| 5 | Temperature Range | - 4 to 212 F at full pressure | Input Value → | |
| 6 | CERTIFICATIONS | Certificate of Conformance / Compliance (COC) | Confirm to supply → | |
| 7 | VENDOR REMARKS | | | |

TECHNICAL PARAMETERS CHECK LIST
DATA VALUES TO BE FILLED AND CONFIRMED BY VENDOR

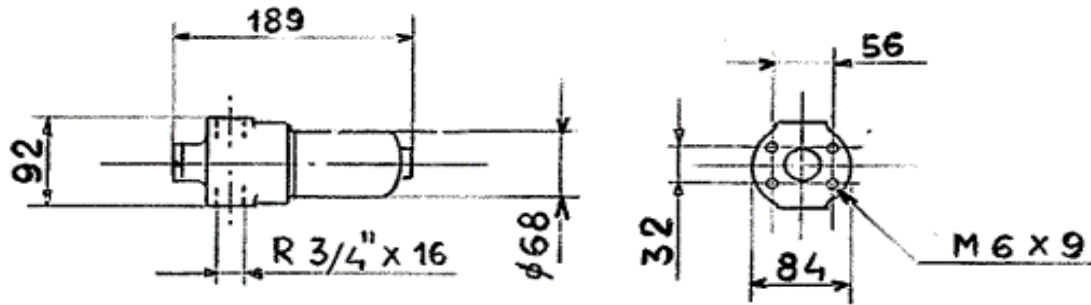
ITEM MATCODE W97011401113
 ITEM NAME RETURN FILTER
 ITEM PART NO P/N 157618130
 COMMERCIAL EQUIVALENTS MODEL: LF ON 0330 I F 20 A1.0/-B6 OF HYDAC



| SN. | DESCRIPTION | SPECIFICATION | RESPONSE TYPE | VENDOR RESPONSE |
|-----|--------------------|---|---------------------|-----------------|
| 1 | ITEM | RETURN FILTER | To confirm → | |
| 2 | PRESSURE (Max) | 100 Bar | Input Value → | |
| 3 | Filtration rating | 20 MICRON | To confirm → | |
| 4 | Filter material | Optimicron low pressure | Input Value → | |
| 5 | Type of connection | Thread (inches, ISO 228) | Input Value → | |
| 6 | Connection size | 1 1/2 inch | Input Value → | |
| 7 | CLOGGING INDICATOR | SCREW PLUG | Input Value → | |
| 8 | Bypass | 6 Bar | Input Value → | |
| 9 | SEALING MATERIAL | NBR (Perbunan) | Input Value | |
| 10 | CERTIFICATIONS | Certificate of Conformance / Compliance (COC) | Confirm to supply → | |
| 11 | VENDOR REMARKS | | | |

**TECHNICAL PARAMETERS CHECK LIST
DATA VALUES TO BE FILLED AND CONFIRMED BY VENDOR**

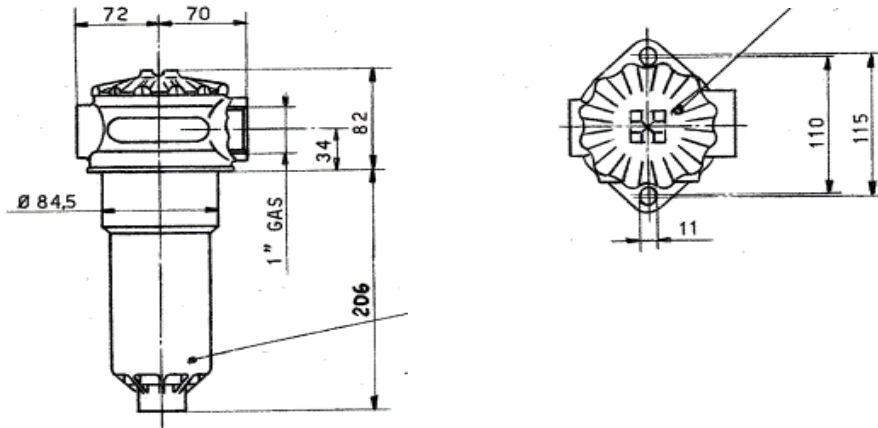
ITEM MATCODE W97011401032
 ITEM NAME INLINE FILTER
 ITEM PART NO P/N 157618137
 COMMERCIAL EQUIVALENTS MODEL:DF ON 60T C20 A1.0/ B6 OF HYDAC



| SN. | DESCRIPTION | SPECIFICATION | RESPONSE TYPE | VENDOR RESPONSE |
|-----|----------------------------|---|---------------------|-----------------|
| 1 | ITEM | INLINE FILTER | To confirm → | |
| 2 | PRESSURE RANGE | 420 BAR | Input Value → | |
| 3 | FILTRATION RATING | 20 MICRONS | Input Value → | |
| 4 | ELEMENT MEDIA | Betamicron/Optimicron | Input Value → | |
| 5 | Type of connection | Thread (inches, ISO 228) | Input Value → | |
| 6 | Connection size | 3/4 inch | Input Value → | |
| 7 | TYPE OF CLOGGING INDICATOR | A | Input Value → | |
| 8 | BYPASS | 6 BAR | Input Value → | |
| 9 | Sealing material | NBR (Perbunan) | Input Value → | |
| 10 | CERTIFICATIONS | Certificate of Conformance / Compliance (COC) | Confirm to supply → | |
| 11 | VENDOR REMARKS | | | |

TECHNICAL PARAMETERS CHECK LIST
DATA VALUES TO BE FILLED AND CONFIRMED BY VENDOR

ITEM MATCODE W97011401040
 ITEM NAME RETURN FILTER
 ITEM PART NO P/N 157618275
 COMMERCIAL EQUIVALENTS MODEL:BN/HC 0165 BD 10AZ.0 OF HYDAC



| SN. | DESCRIPTION | SPECIFICATION | RESPONSE TYPE | VENDOR RESPONSE |
|-----|----------------------------|---|---------------------|-----------------|
| 1 | ITEM | RETURN FILTER | To confirm → | |
| 2 | PRESSURE (Max) | 10 Bar | Input Value → | |
| 3 | Filter Material | ON=Optimicron low pressure | Input Value → | |
| 4 | FILTRATION RATING | 10 MICRONS | Input Value → | |
| 5 | Type of connection | Thread (inches, ISO 228) | Input Value → | |
| 6 | Connection size | 1 inch | Input Value → | |
| 7 | TYPE OF CLOGGING INDICATOR | A=no CI (screw plug) | Input Value → | |
| 8 | BYPASS | 3 BAR | Input Value → | |
| 9 | Sealing Material | NBR (Perbunan) | Input Value → | |
| 10 | CERTIFICATIONS | Certificate of Conformance / Compliance (COC) | Confirm to supply → | |
| 11 | VENDOR REMARKS | | | |

**TECHNICAL PARAMETERS CHECK LIST
DATA VALUES TO BE FILLED AND CONFIRMED BY VENDOR**

ITEM MATCODE W97011401121
 ITEM NAME FILTER CARTRIDGE
 ITEM PART NO P/N 157618261
 COMMERCIAL EQUIVALENTS MODEL: 0060 D 020 ON OF HYDAC



| SN. | DESCRIPTION | SPECIFICATION | RESPONSE TYPE | VENDOR RESPONSE |
|-----|-----------------------|--|---------------------|-----------------|
| 1 | ITEM | CARTRIDGE FILTER ELEMENT | To confirm → | |
| 2 | SIZE | 60 | To confirm → | |
| 3 | FILTRATION RATE | 20 micron-meter | To confirm → | |
| 4 | FILTER ELEMENT | Betamicon (BN/HC) OR OPTIMICRON (ON) | To confirm → | |
| 5 | OPERATING TEMPERATURE | Min. - 30 °C Max. + 100 °C | Input Value → | |
| 6 | CERTIFICATIONS | Certificate of Conformance / Compliance (COC) | Confirm to supply → | |
| 7 | VENDOR REMARKS | | | |

TECHNICAL PARAMETERS CHECK LIST
DATA VALUES TO BE FILLED AND CONFIRMED BY VENDOR

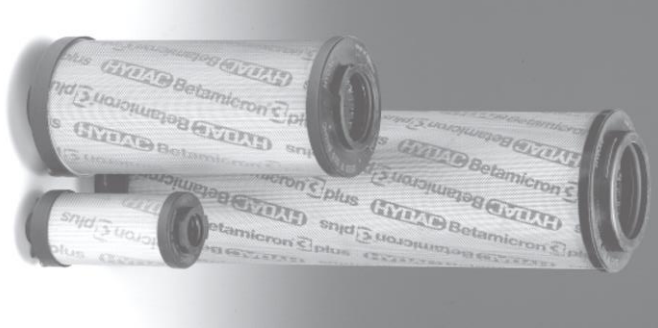
ITEM MATCODE W97011401130
ITEM NAME FILTER CARTRIDGE
ITEM PART NO P/N 157618262
COMMERCIAL EQUIVALENTS MODEL: 0330 D 020 ON OF HYDAC



| SN. | DESCRIPTION | SPECIFICATION | RESPONSE TYPE | VENDOR RESPONSE |
|-----|-----------------------|--|---------------------|-----------------|
| 1 | ITEM | CARTRIDGE FILTER ELEMENT | To confirm → | |
| 2 | SIZE | 330 | To confirm → | |
| 3 | FILTRATION RATE | 20 micron-meter | To confirm → | |
| 4 | FILTER ELEMENT | Betamicon (BN/HC) OR OPTIMICRON (ON) | To confirm → | |
| 5 | OPERATING TEMPERATURE | Min. - 30 °C Max. + 100 °C | Input Value → | |
| 6 | CERTIFICATIONS | Certificate of Conformance / Compliance (COC) | Confirm to supply → | |
| 7 | VENDOR REMARKS | | | |

TECHNICAL PARAMETERS CHECK LIST
DATA VALUES TO BE FILLED AND CONFIRMED BY VENDOR

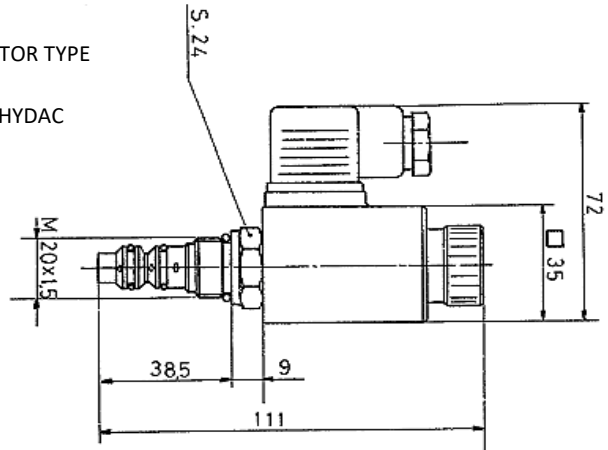
ITEM MATCODE W97011401156
 ITEM NAME FILTER CARTRIDGE
 ITEM PART NO P/N 157618359
 COMMERCIAL EQUIVALENTS MODEL: 0165 R 010 ON OF HYDAC



| SN. | DESCRIPTION | SPECIFICATION | RESPONSE TYPE | VENDOR RESPONSE |
|-----|-----------------------------------|---|---------------------|-----------------|
| 1 | ITEM | CARTRIDGE FILTER ELEMENT | To confirm → | |
| 2 | SIZE | 165 | To confirm → | |
| 3 | FILTRATION RATE | 10 micron-meter | To confirm → | |
| 4 | FILTER ELEMENT | Betamicron (BN/HC) OR OPTIMICRON (ON) | To confirm → | |
| 5 | CRACKING PRESSURE OF BYPASS VALVE | 3 + 0.5 BAR | Input Value → | |
| 6 | OPERATING TEMPERATURE | Min. - 30 °C Max. + 100 °C | Input Value → | |
| 7 | CERTIFICATIONS | Certificate of Conformance / Compliance (COC) | Confirm to supply → | |
| 8 | VENDOR REMARKS | | | |

TECHNICAL PARAMETERS CHECK LIST
DATA VALUES TO BE FILLED AND CONFIRMED BY VENDOR

ITEM MATCODE W97034301034
ITEM NAME VALVE. ELECTRO DISTRIBUTOR TYPE
ITEM PART NO P/N 157655100
COMMERCIAL EQUIVALENTS WSE 3E0C.X/G24-Z4-N OF HYDAC



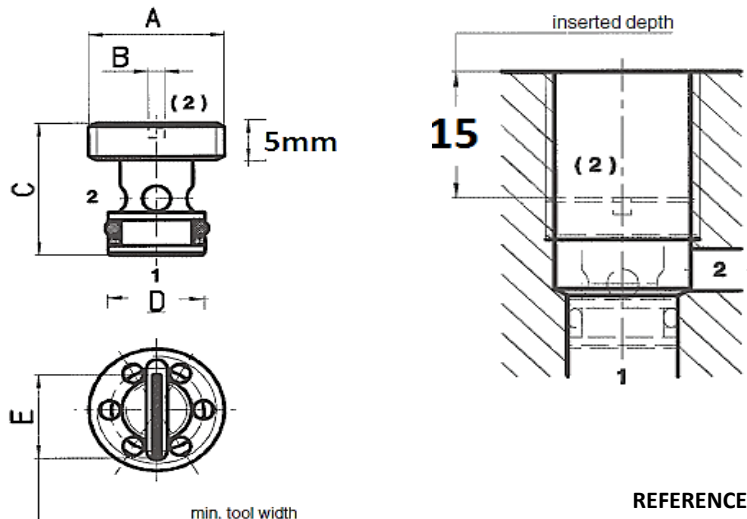
| SN. | DESCRIPTION | SPECIFICATION | RESPONSE TYPE | VENDOR RESPONSE |
|-----|---|---|---------------------|-----------------|
| 1 | VALVE TYPE | DIRECTIONAL SEAT VALVE | To confirm → | |
| 2 | DIMENSIONS# | AS PER ABOVE SKETCH | To confirm → | |
| 3 | MATERIAL FOR VALVE SEATS, CLOSING ELEMENTS AND ACTUATING ELEMENTS | HARDENED STEEL | To confirm → | |
| 4 | TYPE OF OPERATION | SOLENOID OPERATED | To confirm → | |
| 5 | OPERATION PRESSURE | 500 BAR | Input Value → | |
| 6 | OPERATING TEMPERATURE | Min. - 20 °C Max. + 80 °C | Input Value → | |
| 7 | FLOW RATE | 12 L/min | Input Value → | |
| 8 | TYPE OF CONNECTION | CARTRIDGE VALVE | To confirm → | |
| 9 | FLOW MECHANISM | <p>P to A normally closed. 3/2 directional seat valve, P is closed and leakage free, A to T is open (switching position a). When the solenoid is actuated, P to A is opened and port T is closed and leakage free (switching position b). Flow is only permissible in direction of arrow.</p> | To confirm → | |
| 10 | CURRENT | DC | To confirm → | |
| 11 | VOLTAGE | 24V (+10 % / - 5%) | Input Value → | |
| 12 | ELECTRICAL CONNECTIONS FOR ACTUATING SOLENOID | CONNECTOR AS PER DIN 43650-AF2-PG9 | To confirm → | |
| 13 | SWITCHING TIME | switch-on time: 40 ms, switch-off time: 45 ms | Input Value → | |
| 14 | EMERGENCY OPERATION | PIN TYPE | To confirm → | |
| 15 | CERTIFICATIONS | Certificate of Conformance / Compliance (COC) | Confirm to supply → | |
| 16 | VENDOR REMARKS | | | |

Outer dimensions should be strictly as per above sketch. Offers not meeting these dimensions will be rejected.

TECHNICAL PARAMETERS CHECK LIST
DATA VALUES TO BE FILLED AND CONFIRMED BY VENDOR

ITEM CODE W97034302014
ITEM NAME CHECK VALVE
ITEM PART NO 157611159
INTERNATIONAL EQUIVALENT RVE-R3/8-X-0.5 OF HYDAC

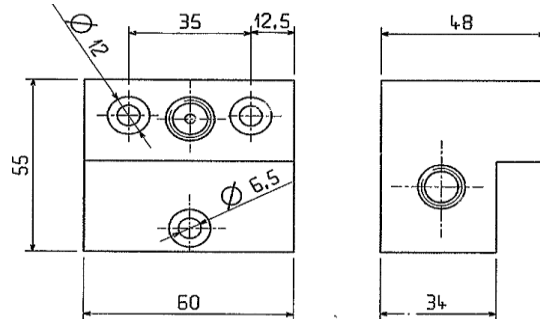
| SN. | PARAMETERS | VALUES RANGE | UNIT | RESPONSE TYPE | VENDOR RESPONSE |
|------|---|---|----------|---------------|-----------------|
| 1 | VALVE TYPE | CHECK VALVE | - | To confirm → | |
| 2 | TYPE OF CONSTRUCTION | BALL SEAT VALVE | - | To confirm → | |
| 3 | TYPE OF MOUNTING | CARTRIDGE | - | To confirm → | |
| 4 | OPERATING PRESSURE (MAX.) | 350 | BAR | Input Value → | |
| 5 | CRACKING PRESSURE | 0.5 | BAR | Input Value → | |
| 6 | FLOW RATE | 30 | LITRE / | Input Value → | |
| 7 | CONNECTION TYPE | G 3/8 | INCH | Input Value → | |
| 8 | WEIGHT (APPROX.) | 10 | GM | Input Value → | |
| 9 | AMBIENT TEMPERATURE | -20 TO +80 | DEGREE C | Input Value → | |
| 10 | MATERIAL | | | | |
| 10.1 | VALVE BODY | HIGH TENSILE STEEL | - | To confirm → | |
| 10.2 | BALL | ROLLER BEARING STEEL | - | To confirm → | |
| 10.3 | SEALS | COMPATIBLE TO HYDRAULIC OILS | - | To confirm → | |
| 11 | DIMENSIONS | | | | |
| 11.1 | TOP WIDTH | A = G 3/8 | INCH | Input Value → | |
| 11.2 | TOOL SLOT | B = 2 | MM | Input Value → | |
| 11.3 | HEIGHT | C = 18 | MM | Input Value → | |
| 11.4 | BOTTOM WIDTH | D = 12 | MM | Input Value → | |
| 11.5 | TOOL WIDTH (MIN.) | E = 13.5 | MM | Input Value → | |
| 12 | CERTIFICATION | Certificate of Conformance / Compliance (COC) | Y / N | To confirm → | |
| 13 | PRODUCT DATASHEET | ENCLOSED | Y / N | To confirm → | |
| 14 | VENDOR REMARKS: Vendor to give here details of quoted item and deviations, if any. Specify the Make >> and Model quoted. >> Deviation, if any >> | | | | |



REFERENCE FIGURE

TECHNICAL PARAMETERS CHECK LIST
DATA VALUES TO BE FILLED AND CONFIRMED BY VENDOR

ITEM MATCODE W97034901031
ITEM NAME HYDRAULIC ACTUATOR BOX TYPE
ITEM PART NO P/N 157655101
COMMERCIAL EQUIVALENTS FOR DIRECTIONAL SEAT VALVE MODEL:WSE 3E0C.X/G24-Z4-N OF HYDAC

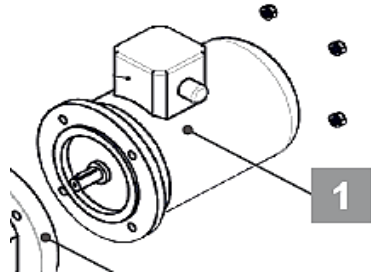


| SN. | DESCRIPTION | SPECIFICATION | RESPONSE TYPE | VENDOR RESPONSE |
|-----|---|---|---------------------|-----------------|
| 1 | ITEM | MOUNTING BODY DIRECTIONAL SEAT VALVE MODEL:WSE 3E0C.X/G24-Z4-N OF HYDAC | To confirm → | |
| 2 | DIMENSIONS# | AS PER ABOVE SKETCH | To confirm → | |
| 3 | MATERIAL FOR VALVE SEATS, CLOSING ELEMENTS AND ACTUATING ELEMENTS | HARDENED STEEL | To confirm → | |
| 4 | FINSIH | HARD ANODIC COATING | To confirm → | |
| 5 | CERTIFICATIONS | Certificate of Conformance / Compliance (COC) | Confirm to supply → | |
| 6 | VENDOR REMARKS | | | |

Outer dimensions should be strictly as per above sketch. Offers not meeting these dimensions will be rejected.

TECHNICAL PARAMETERS CHECK LIST
DATA VALUES TO BE FILLED AND CONFIRMED BY VENDOR

ITEM MATCODE W97056801048
ITEM NAME MOTOR TYPE E-MOT.IMB5/V1, 0.25 KW
ITEM PART NO P/N 157618437
COMMERCIAL EQUIVALENTS PART NO.- 637560 OF HYDAC



| SN. | DESCRIPTION | SPECIFICATION | RESPONSE TYPE | VENDOR RESPONSE |
|-----|----------------------------------|--|------------------------|-----------------|
| 1 | ITEM | ELECTRIC MOTOR | To confirm → | |
| 2 | POWER | 0.25 KW | To confirm → | |
| 3 | NO. OF POLES | 6 | To confirm → | |
| 4 | SIZE | 71 | To confirm → | |
| 5 | SPEED | 900 RPM | To confirm → | |
| 6 | IM CLASS | B5 with drive side flange, through holes | Input Value → | |
| 7 | OPERATING VOLTAGE | 230/400 V – 50 Hz / 265/460 V – 60 Hz | Input Value → | |
| 7 | NOMINAL CURRENT @ 400 V 50 HZ | 1 AMPERE | Input Value → | |
| 8 | NOISE LEVEL AT 1 METER | 56-60 dBA | Input Value → | |
| 9 | CERTIFICATIONS | Certificate of Conformance / Compliance (COC) | Confirm to supply → | |
| 8 | VENDOR REMARKS | | | |

| <u>TECHNO-COMMERCIAL CHECKLIST</u> | | |
|---|---|---|
| SL. NO. | TERMS & CONDITION | VENDOR CONFIRMATION /REMARKS / REPLY |
| TENDER DETAILS | | |
| 1 | BIDDER NAME | |
| 2 | GEM BID NO | |
| QUALITY & TECHNICAL REQUIREMENTS | | |
| 3 | ALL VENDORS TO PROVIDE POINT WISE REPLY/CONFIRMATION ALONG WITH RELEVANT SUPPORTING DOCUMENTS TO EACH AND EVERY POINT OF PRE-QUALIFICATION REQUIREMENT/PQR FOR ALL ENQUIRY ITEMS. NONCOMPLIANCE OF THESE MAY LEAD TO REJECTION OF OFFER AS THESE ARE ESSENTIAL CONDITION FOR PARTICIPATING IN TENDER ENQUIRY. | |
| 4 | KINDLY UPLOAD/ATTACH THE SPECIFICATION DETAILS/ CATALOGUE OF OFFERED ITEMS. (IF APPLICABLE) | |
| 5 | KINDLY SUBMIT TECHNICAL PARAMETERS CHECK LIST ALONG WITH YOUR OFFER. | |
| 6 | VENDOR TO CONFIRM TO PROVIDE TEST CERTIFICATES AS PER ORIGINAL EQUIPMENT MANUFACTURER'S STANDARD PRACTICE INCLUDING DOCUMENTS COFORMING TO ENQUIRY MAKE/MODEL/PART NO. ALONG WITH THE MATERIAL. | |
| 7 | VENDOR TO CONFIRM TO PROVIDE CERTIFICATE OF CONFORMANCE ALONG WITH MATERIAL DISPATCH. | |
| 8 | VENDOR TO CONFIRM TO PROVIDE NON-REMOVABLE IDENTIFICATION OF ITEMS AND THEIR REPORT ACCORDINGLY. | |
| COMMERICAL REMARKS | | |
| 10 | VENDOR TO CONFIRM DELIVERY SCHEDULE AS BHEL ENQUIRY CONDITION | |
| 11 | 1. EARLY DELIVERY IS ACCEPTABLE FOR LOT 1. 2. EARLY DELIVERY ACCEPTABLE 2 MONTHS BEFORE SCHECHDULED DATE FOR LOT 2 & 3. | |
| 12 | KINDLY SUBMIT MAKE IN INDIA SELF CERTIFICATION AS PER FORMAT GIVEN ALONG WITH THE ENQUIRY | |
| 13 | BREACH OF CONTRACT CLAUSE: IN CASE OF BREACH OF CONTRACT, WHEREVER THE VALUE OF SECURITY INSTRUMENTS LIKE PERFORMANCE BANK GUARANTEE AVAILABLE WITH BHEL AGAINST THE SAID CONTRACT IS ATLEAST 10% OF THE CONTRACT VALUE, THE SAME BE ENCASHED. IN CASE THE VALUE OF THE SECURITY INSTRUMENTS AVAILABLE IS LESS THAN 10% OF THE CONTRACT VALUE, THE BALANCE AMOUNT BE RECOVERED FROM OTHER FINANCIAL REMEDIES (I.E. AVAILABLE BILLS OF THE CONTRACTOR, RETENTION AMOUNT, ETC. WITH BHEL) OR LEGAL REMEDIES BE PURSUED. | |

| | | |
|----|---|--|
| 14 | <p>ACTION AGAINST BIDDERS / VENDOR / SUPPLIER / CONTRACTOR IN CASE OF DEFAULT:</p> <p>IN ORDER TO PROTECT THE COMMERCIAL INTERESTS OF BHEL, BHEL SHALL TAKE ACTION AGAINST SUPPLIES / CONTRACTORS BY WAY OF SUSPENSION OF BUSINESS DEALINGS, WHO EITHER FAIL TO PERFORM OR ARE IN DEFAULT WITHOUT ANY REASONABLE CAUSE, CAUSE LOSS OF BUSINESS/ MONEY/ REPUTATION, INDULGE IN MALPRACTICES, CHEATING, BRIBERY, FRAUD OR ANY OTHER MISCONDUCT OR FORMATION OF CARTELS SO AS TO INFLUENCE THE BIDDING PROCESS OR INFLUENCE THE PRICE ETC.</p> <p>SUSPENSION OF BUSINESS DEALINGS COULD BE IN THE FORM OF “HOLD” OR “BANNING” A SUPPLIER/ CONTRACTOR OR A BIDDER AND SHALL BE AS PER “GUIDELINES FOR SUSPENSION OF BUSINESS DEALINGS WITH SUPPLIERS/ CONTRACTORS” AVAILABLE AT BHEL’S WEBSITE “https://www.bhel.com/guidelines-suspension-business-dealings-supplierscontractors”</p> | |
| 15 | REST GENERAL TERMS AND CONDITIONS AS PER GeM | |

MAKE IN INDIA SELF CERTIFICATION

As per Government Public procurement order no. P-45021/2/2017-BE-II dt.15.06.2017 & P45021/2/2017-PP(BE-II) dated 28.05.2018,29.5.2019, 04.6.2020 and amendment dated 16.09.2020, it is hereby certifying that we

.....
..... (supplier name) are(Class-I/Class-II)
local supplier and will meet the requirement of minimum local content of
(50%/20%) as defined in public procurement order dated 04.6.2020 for material against Enquiry no.
..... Details of
location at which local value addition will be made is as follows: -
.....
.....
.....

We also understand, false declarations will be in breach of the code of integrity under Rule 175(1)(i)(h) of the General Financial Rules for which a bidder or its successors can be debarred for up to two years as per Rule 151 (iii) of the general financial rules along with such other actions as may be permissible under law.

Note:

As per office order P-45021/102/2019-BE-II-Part (1) (E-50310) Dated 04/03/2021, Bidders can't claim itself as "Class-I local supplier/Class-II local suppliers" by claiming the service such as transportation, insurance, installation, commissioning, training & after sales service support like AMC/CMC etc. as local value addition. Bidder offering imported product will fall under the category of Non-Local supplier.

BID SPECIFIC TERMS AND CONDITIONS

1. ALL VENDORS TO PROVIDE POINT WISE REPLY/CONFIRMATION ALONG WITH RELEVANT SUPPORTING DOCUMENTS TO EACH AND EVERY POINT OF **PRE-QUALIFICATION REQUIREMENT/PQR** FOR ALL ENQUIRY ITEMS. NONCOMPLIANCE OF THESE MAY LEAD TO REJECTION OF OFFER AS THESE ARE ESSENTIAL CONDITION FOR PARTICIPATING IN TENDER ENQUIRY.
2. DELIVERY SHALL BE IN STAGGERED MANNER AS PER BELOW TABLE:

| SLN | MAT CODE | ITEM DISCREPTION | TOTAL QUANTITY (NOS.) | LOT | LOT QTY (NOS.) | DELIVERY. SCHEDULE |
|-----|----------------|--|-----------------------|-----------------|----------------|--------------------|
| 1 | W97011101063 | VALVE, REGULATOR, FLOW N.STD:AS PER DRAWING SIZE: 1576-18-211-00 | 4 | 1 ST | 4 | 31-10-24 |
| 2 | W97011401113 | RETURN FILTER, MODEL NO: LF ON 0330 I F 20 A1.0/-B6 OF HYDAC OR EQUIVALENT SIZE: P/N 157618130 | 29 | 1 ST | 11 | 31-10-24 |
| 3 | W97011401113_1 | RETURN FILTER, MODEL NO: LF ON 0330 I F 20 A1.0/-B6 OF HYDAC OR EQUIVALENT SIZE: P/N 157618130 | | 2 ND | 10 | 31-10-25 |
| 4 | W97011401113_2 | RETURN FILTER, MODEL NO: LF ON 0330 I F 20 A1.0/-B6 OF HYDAC OR EQUIVALENT SIZE: P/N 157618130 | | 3 rd | 8 | 31-10-26 |
| 5 | W97011401032 | FILTER, DRAINING TYPE:DF BN/HC 60 G 20 B1.0/-B6 N.STD:HYDAC MAKE | 28 | 1 ST | 10 | 31-10-24 |
| 6 | W97011401032_1 | FILTER, DRAINING TYPE:DF BN/HC 60 G 20 B1.0/-B6 N.STD:HYDAC MAKE | | 2 ND | 10 | 31-10-25 |
| 7 | W97011401032_2 | FILTER, DRAINING TYPE:DF BN/HC 60 G 20 B1.0/-B6 N.STD:HYDAC MAKE | | 3 rd | 8 | 31-10-26 |
| 8 | W97011401040 | FILTER, DRAIN N.STD:HYDAC MAKE SIZE: 1576-18-275-03 | 24 | 1 ST | 11 | 31-10-24 |
| 9 | W97011401040_1 | FILTER, DRAIN N.STD:HYDAC MAKE SIZE: 1576-18-275-03 | | 2 ND | 13 | 31-10-25 |
| 10 | W97011401121 | FILTER CARTRIDGE, MODEL: 0060 D 020 ON OF HYDAC OR EQUIVALENT SIZE: P/N 157618261 | 10 | 1 ST | 10 | 31-10-24 |
| 11 | W97011401130 | FILTER CARTRIDGE MODEL: 0330 D 020 ON OF HYDAC OR EQUIVALENT SIZE: P/N 157618262 | 10 | 1 ST | 10 | 31-10-24 |
| 12 | W97011401156 | FILTER CARTRIDGE, MODEL: 0165 R 010 ON OF HYDAC OR EQUIVALENT SIZE: P/N 157618359 | 23 | 1 ST | 23 | 31-10-24 |
| 13 | W97034301034 | VALVE. ELECTRODISTRIBUTOR TYPE 3SV 3E3 C.O G24N - MIL AS PER DRAWING 1576-55-100-00 N.STD:FLUTEC MAKE SIZE: P/N 157655100 | 37 | 1 ST | 15 | 31-10-24 |

| | | | | | | |
|----|----------------|--|----|-----------------|----|----------|
| 14 | W97034301034_1 | VALVE. ELECTRODISTRIBUTOR TYPE 3SV 3E3 C.O G24N - MIL AS PER DRAWING 1576-55-100-00 N.STD:FLUTEC MAKE SIZE: P/N 157655100 | | 2 ND | 14 | 31-10-25 |
| 15 | W97034301034_2 | VALVE. ELECTRODISTRIBUTOR TYPE 3SV 3E3 C.O G24N - MIL AS PER DRAWING 1576-55-100-00 N.STD:FLUTEC MAKE SIZE: P/N 157655100 | | 3 rd | 8 | 31-10-26 |
| 16 | W97034302014 | CHECK VALVE, MODEL NO: RVE-R3/8-X-0.5 OF HYDAC OR EQUIVALENT N.STD:- SIZE: P/N 157611159 | 3 | 1 ST | 3 | 31-10-24 |
| 17 | W97034901031 | HYDRAULIC ACTUATOR BOX TYPE 3SV 3E3 C.O G24N - MIL TYPE RUAL AR 1164 AS PER DRAWING 1576-55-101-00 N.STD:AS PER DRAWING SIZE: P/N 1576-55-101 | 33 | 1 ST | 13 | 31-10-24 |
| 18 | W97034901031_1 | HYDRAULIC ACTUATOR BOX TYPE 3SV 3E3 C.O G24N - MIL TYPE RUAL AR 1164 AS PER DRAWING 1576-55-101-00 N.STD:AS PER DRAWING SIZE: P/N 1576-55-101 | | 2 ND | 12 | 31-10-25 |
| 19 | W97034901031_2 | HYDRAULIC ACTUATOR BOX TYPE 3SV 3E3 C.O G24N - MIL TYPE RUAL AR 1164 AS PER DRAWING 1576-55-101-00 N.STD:AS PER DRAWING SIZE: P/N 1576-55-101 | | 3 rd | 8 | 31-10-26 |
| 20 | W97056801048 | MOTOR TYPE E-MOT.IMB5/V1, 0.25 KW HAVING SPEED OF 895 RPM AT 50 HZ AND 1115 RPM AT 60 HZ. SUPPLIER PART NO.- 637560 OF HYDAC OR EQUIVALENT | 24 | 1 ST | 8 | 31-10-24 |
| 21 | W97056801048_1 | MOTOR TYPE E-MOT.IMB5/V1, 0.25 KW HAVING SPEED OF 895 RPM AT 50 HZ AND 1115 RPM AT 60 HZ. SUPPLIER PART NO.- 637560 OF HYDAC OR EQUIVALENT | | 2 ND | 8 | 31-10-25 |
| 22 | W97056801048_2 | MOTOR TYPE E-MOT.IMB5/V1, 0.25 KW HAVING SPEED OF 895 RPM AT 50 HZ AND 1115 RPM AT 60 HZ. SUPPLIER PART NO.- 637560 OF HYDAC OR EQUIVALENT | | 3 rd | 8 | 31-10-26 |

3. EARLY DELIVERY IS ACCEPTABLE FOR LOT 1.
4. EARLY DELIVERY ACCEPTABLE 2 MONTHS BEFORE SCHECHDULED DATE FOR LOT 2 & 3.
5. KINDLY UPLOAD/ATTACH THE SPECIFICATION DETAILS/ CATALOGUE OF OFFERED ITEMS.
6. KINDLY **SUBMIT TECHNO-COMMERCIAL CHECKLIST** ALONG WITH YOUR OFFER.
7. KINDLY **SUBMIT TECHNICAL PARAMETERS CHECK LIST** ALONG WITH YOUR OFFER.

8. VENDOR TO CONFIRM TO PROVIDE TEST CERTIFICATES AS PER ORIGINAL EQUIPMENT MANUFACTURER'S STANDARD PRACTICE INCLUDING DOCUMENTS COFORMING TO ENQUIRY MAKE/MODEL/PART NO. ALONG WITH THE MATERIAL.
9. VENDOR TO CONFIRM TO PROVIDE CERTIFICATE OF CONFORMANCE ALONG WITH MATERIAL DISPATCH.
10. VENDOR TO CONFIRM TO PROVIDE NON-REMOVABLE IDENTIFICATION OF ITEMS AND THEIR REPORT ACCORDINGLY.
11. VENDOR TO SUBMIT MAKE IN INDIA SELF CERTIFICATION AS PER FORMAT GIVEN ALONG WITH THE ENQUIRY.
12. MSE/MII: THE SUPPLIER NEEDS TO SUBMIT/UPDATE MSE/MII CREDENTIALS ON GEM PORTAL DURING PROFILE UPDATION/ OFFER SUBMISSION STAGE. THE MSE DATA SUBMITTED IS CROSS VERIFIED BY GEM WITH GOVT. OF INDIA UDYAM/NSIC DATABASE THROUGH API INTEGRATION ON REAL TIME BASIS AND FOR MII, A SELF DECLARATION IS BEING GIVEN AND AUTHENTICATED BY AADHAR OTP. IF THE SELLER FAILS TO CLAIM MSE/MII PROVISION ON GEM PORTAL AT PROFILE UPDATION/BID SUBMISSION STAGE, THE SAID SELLER WILL BECOME INELIGIBLE FOR GETTING THE MSE/MII BENEFITS FOR THAT BID AUTOMATICALLY. THE VENDOR CAN ALWAYS CONTACT THE GEM HELPDESK, IN CASE OF ANY ISSUES.
13. IF PRICE QUOTED BY MSE VENDOR IS WITHIN THE PRICE BAND OF L1+15%, THEN 25% QUANTITY OF THE RESPECTIVE ITEM (ROUNDED OFF TO NEAREST NUMBER) SHALL BE OFFERED TO MSE VENDOR SUBJECT TO MATCHING THE L1 PRICES.
14. IF THE QUANTITY REQUIRED IS 1 NUMBER (AS SUCH NON-DIVISIBLE), MSE QUOTING WITH IN PRICE PREFERENCE OF L1+15% SHALL BE OFFERED 100% QUANTITY SUBJECT TO MATCHING THE L1 PRICES
15. THE PRICE QUOTE BY BIDDER SHOULD BE INCLUSIVE OF GST & SHOULD BE ON BHEL HEEP HARIDWAR STORES BASIS.
16. BIDDER'S OFFER IS LIABLE TO BE REJECTED IF THEY DON'T UPLOAD ANY OF THE CERTIFICATES / DOCUMENTS SOUGHT IN THE BID DOCUMENT, ATC AND CORRIGENDUM IF ANY.

17. BREACH OF CONTRACT CLAUSE:

IN CASE OF BREACH OF CONTRACT, WHEREVER THE VALUE OF SECURITY INSTRUMENTS LIKE PERFORMANCE BANK GUARANTEE AVAILABLE WITH BHEL AGAINST THE SAID CONTRACT IS ATLEAST 10% OF THE CONTRACT VALUE, THE SAME BE ENCASHED. IN CASE THE VALUE OF THE SECURITY INSTRUMENTS AVAILABLE IS LESS THAN 10% OF THE CONTRACT VALUE, THE BALANCE AMOUNT BE RECOVERED FROM OTHER FINANCIAL REMEDIES (I.E. AVAILABLE BILLS OF THE CONTRACTOR, RETENTION AMOUNT, ETC. WITH BHEL) OR LEGAL REMEDIES BE PURSUED.

18. ACTION AGAINST BIDDERS / VENDOR / SUPPLIER / CONTRACTOR IN CASE OF DEFAULT:

IN ORDER TO PROTECT THE COMMERCIAL INTERESTS OF BHEL, BHEL SHALL TAKE ACTION AGAINST SUPPLIES / CONTRACTORS BY WAY OF SUSPENSION OF BUSINESS DEALINGS, WHO EITHER FAIL TO PERFORM OR ARE IN DEFAULT WITHOUT ANY REASONABLE CAUSE, CAUSE LOSS OF BUSINESS/ MONEY/ REPUTATION, INDULGE IN MALPRACTICES, CHEATING, BRIBERY, FRAUD OR ANY OTHER MISCONDUCT OR FORMATION OF CARTELS SO AS TO INFLUENCE THE BIDDING PROCESS OR INFLUENCE THE PRICE ETC.

SUSPENSION OF BUSINESS DEALINGS COULD BE IN THE FORM OF "HOLD" OR "BANNING" A SUPPLIER/ CONTRACTOR OR A BIDDER AND SHALL BE AS PER "GUIDELINES FOR SUSPENSION OF BUSINESS DEALINGS WITH SUPPLIERS/ CONTRACTORS" AVAILABLE AT BHEL'S WEBSITE <https://www.bhel.com/guidelines-suspension-business-dealings-supplierscontractors>

19. BIDDERS ARE ADVISED TO CHECK APPLICABLE GST ON THEIR OWN BEFORE QUOTING. BUYER WILL NOT TAKE ANY RESPONSIBILITY IN THIS REGARDS. GST REIMBURSEMENT WILL BE AS PER ACTUALS OR AS PER APPLICABLE RATES (WHICHEVER IS LOWER), SUBJECT TO THE MAXIMUM OF QUOTED GST %.

20. BIDDER SHALL SUBMIT THE FOLLOWING DOCUMENTS ALONG WITH THEIR BID FOR VENDOR CODE CREATION:

A. COPY OF PAN CARD B. COPY OF GSTIN C. COPY OF MSE CERTIFICATE

21. DEDICATED /TOLL FREE TELEPHONE NO. FOR SERVICE SUPPORT: BIDDER/OEM MUST HAVE DEDICATED/TOLL FREE TELEPHONE NO. FOR SERVICE SUPPORT.

22. DATA SHEET OF THE PRODUCT(S) OFFERED IN THE BID, ARE TO BE UPLOADED ALONG WITH THE BID DOCUMENTS. BUYERS CAN MATCH AND VERIFY THE DATA SHEET WITH THE PRODUCT SPECIFICATIONS OFFERED. IN CASE OF ANY UNEXPLAINED MISMATCH OF TECHNICAL PARAMETERS, THE BID IS LIABLE FOR REJECTION.

23. SCOPE OF SUPPLY (BID PRICE TO INCLUDE ALL COST COMPONENTS): ONLY SUPPLY OF GOODS.

24. PRODUCTS SUPPLIED SHALL BE NONTOXIC AND HARMLESS TO HEALTH. IN THE CASE OF TOXIC MATERIALS, MATERIAL SAFETY DATA SHEET MAY BE FURNISHED ALONG WITH THE MATERIAL.

25. WHILE GENERATING INVOICE IN GEM PORTAL, THE SELLER MUST UPLOAD SCANNED COPY OF GST INVOICE AND THE SCREENSHOT OF GST PORTAL CONFIRMING PAYMENT OF GST.

26. **PAYMENT TERMS SHALL BE AS PER FOLLOWINGS:**

- a) **FOR NON-MSES BIDDER:** 100% payment along with taxes, freight & insurance will be made after receipt and acceptance of material and within 90 days from the date of invoice subject to submission of non-discrepant documents within 15 days of supply as per terms and conditions of Purchase Order (THIS IS IN SUPERSESION OF 10 DAYS' TIME AS PROVIDED IN CLAUSE 12 OF GEM GTC).
- b) **FOR MSES BIDDER:** For MSEs (covered under MSME Act) which are registered and periodically renewed with BHEL, the payment will be made within 45 days or as prescribed in the relevant act. Benefits of MSE (such as EMD Waiver, Tender fee exemption, Price preference, Payment preference etc.) will be given only to those MSE Vendors who are manufacturers of offered items against the NIT. No MSE benefits shall be provided to Agents / Stockists /Dealers / Traders etc. for the items offered but not manufactured by themselves.”
- c) **FOR MEDIUM ENTERPRISES:** 100% payment along with taxes, freight & insurance will be made after receipt and acceptance of material and within 60 days from the date of invoice subject to submission of non-discrepant documents within 15 days of supply as per terms and conditions of Purchase Order.
- d) Please note that vendor to adhere to the payment terms as per above. No deviation in payment terms shall be accepted. Vendor to submit their offer accordingly.