

A4 - 11

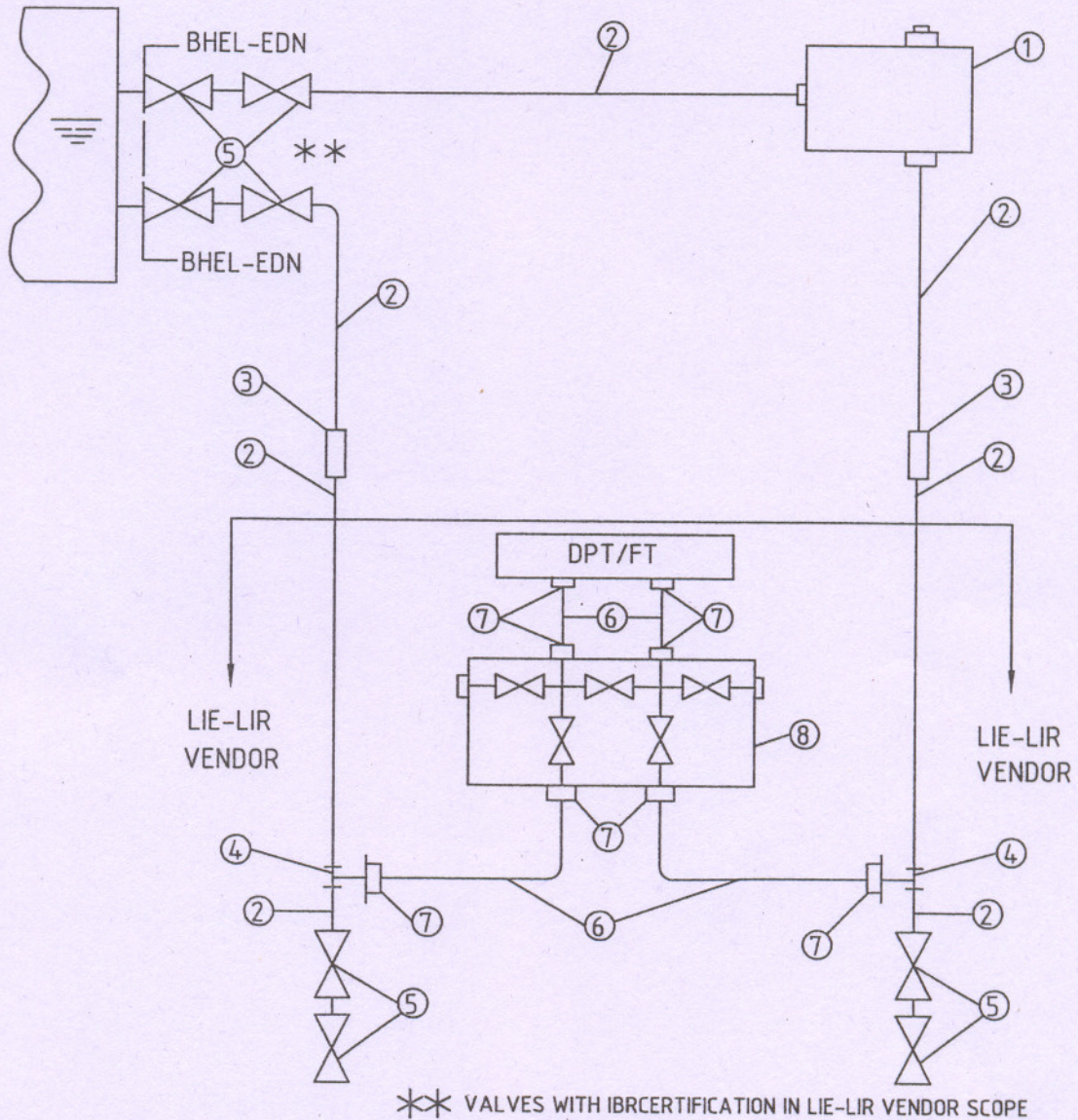
PROJECT: PANIPAT 1 X 110 MW R & M
 CUSTOMER: M/S HPGCL

CE/415/PTPS/INS

REV. NO. 00

PAGE 15 OF 71

COPY RIGHT AND CONFIDENTIAL
 The information on this document is the property of Bharat Heavy Electricals Limited.
 It must not be used directly or indirectly in anyway detrimental to the interest to the Company.



ITEM NO	ITEM DESCRIPTION	QTY./SCHEME
1	CONDENSATE POT+VENT PLUG/A 106 Gr C /DIA 114mm X13mm/PROCESS AND INSTRUMENT CONN: 1/2"NB-SW	1 NOS
2	IMPULSE PIPE/ A 106 Gr.C/1/2"NB-SCH 160	A/R
3	FORGED COUPLING/A 105/1/2" NB-SW/CL 6000 AS PER ANSI B 16.11	A/R
4	FORGED UNEQUAL TEE/A 105/2 X 1/2" NB-SW X 1/2" NPTF/CL 6000 AS PER ANSI B 16.11	2 NOS
5	GLOBE VALVE/A105 /CL2500/1/2" NB-SW	8NOS
6	SEAMLESS TUBE/SS 316/1/2" OD X2.1mm THK.	2 meters
7	MALE CONNECTOR/ SS316/ 1/2" NPTM X TO SUIT 1/2" OD SS TUBE	8 NOS
8	FIVE VALVE MANIFOLD / SS 316/PORT:1/2" NPTF /Pr.=6000 PSI	1 NO

REVISION NO
 DATE