

NOTICE

INVITING EXPRESSION OF INTEREST

SUPPLY OF HAND RAILS AND BENDS

BHEL is one of the largest engineering and manufacturing enterprises in India in the field of power, offering wide spectrum of product and services for core economic sectors like power generation, transmission, distribution etc. and we are executing various Power Projects in various places.

BHEL - Outsourcing department at Tiruchirapalli, Tamil Nadu, requires potential vendors to undertake manufacture of HAND RAILS AND BENDS of both Paintable category and Galvanisable category.

- Total quantum required is 2259 MT of Paintable category and 1077 MT of Galvanisable category for ONE YEAR.
- The vendor has to buy the tubes from BHEL approved vendors and fabricate Hand rails, bends as per BHEL specification, Paint / Galvanise and supply either directly to BHEL, Tiruchirapalli or to designated sites specified as the case may be.

Details of Handrails & Bends drawings, BHEL approved tube vendors are attached.

Interested parties having previous experience in execution of this products and having financial strength, other resources like experienced manpower, toolings, plants may submit “ Expression of Interest” with their technical data, Catalogue, etc. within twelve days from the date of publication of this notification, to the following address, in the prescribed form enclosed.

Addl. General Manager
Outsourcing, Bldg 79
BHEL , Tiruchirapalli
Tamilnadu 620 014

Tel : (0431) 257 4275
Fax :(0431) 252 0517



BHEL / TIRUCHIRAPALLI – 14
OUTSOURCING

VENDOR DATA

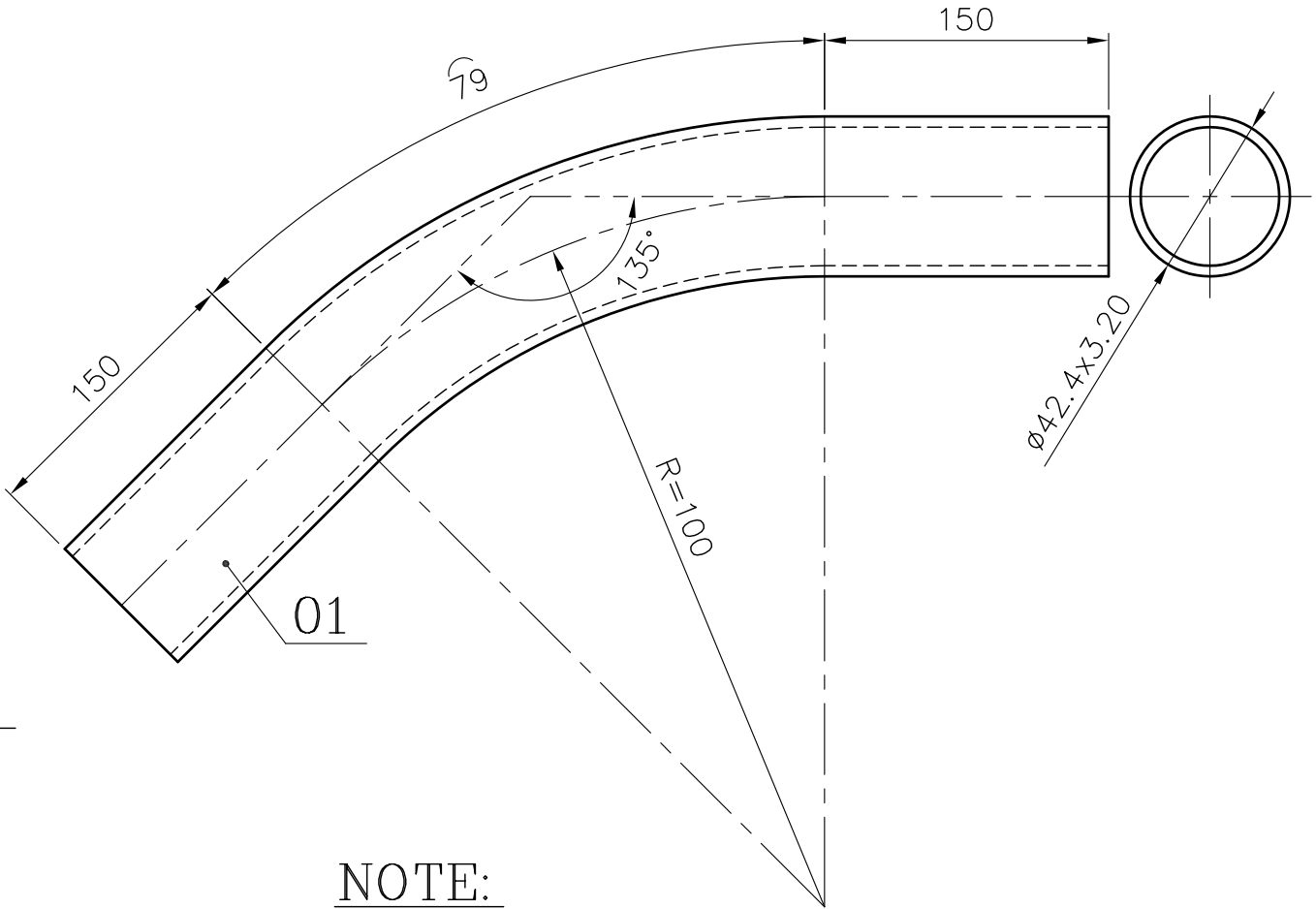
1. a. Name of the vendor	
1. b. Address of the vendor	
2. Constitution of the vendor	Proprietor / Partnership / Limited *
3. Technically qualified person In the capacity of proprietor / Managing partner / Director	
4. <u>Name, Contact Ph.nos & cell nos including email id of</u> Managing Partner Production Manager Inspection Engineer	
5.Details <ul style="list-style-type: none">LandConnected Power (for related machines)List of machinesHandling facilities & its capacity and specification <u>Man power</u> Technical Production & Quality Non – Technical <u>Financial Status</u> <ul style="list-style-type: none">Name of BankersTurnover for the last 3 years (Enclose audited Balance Sheets for last 3 years)PAN No.Credit limit	Own / Leased # Covered shed Area : Total Area :
	HP
	- List to be enclosed -
	- List to be enclosed -
	-- persons
	-- persons
6.Details of job under taken, any other facilities available (Enclose ISO certificate, if any)	
7.Any legal issues concerning the company	Pls. Specify if any

Signature of Authorised Person

BHEL APPROVED VENDORS FOR ERW TUBES :

1. TATA STEEL LIMITED, CHENNAI
2. JINDAL PIPES LTD., GURGAON
3. JOTINDRA STEEL & TUBES LTD., FARIDABAD
4. ZENITH LIMITED, MUMBAI
5. BHUSHAN LIMITED, CHENNAI
6. P.S.STEEL TUBES (P) LTD, BHILAI
7. TUBE PRODUCTS OF INDIA, CHENNAI


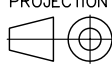
REV 01	DATE 16-05-05	ALTERED : R.S	REV 02	DATE 14.07.05	ALTERED CHD & APPD	S.MOINUDEEN R.R.S	FOR TOLERANCES OF UNTOLERANCED DIMENSIONS DURING MANUFACTURE REFER PLANT STD. NO TP 023 0299
MATERIAL CODE UPDATED			MATERIAL CODE UPDATED				



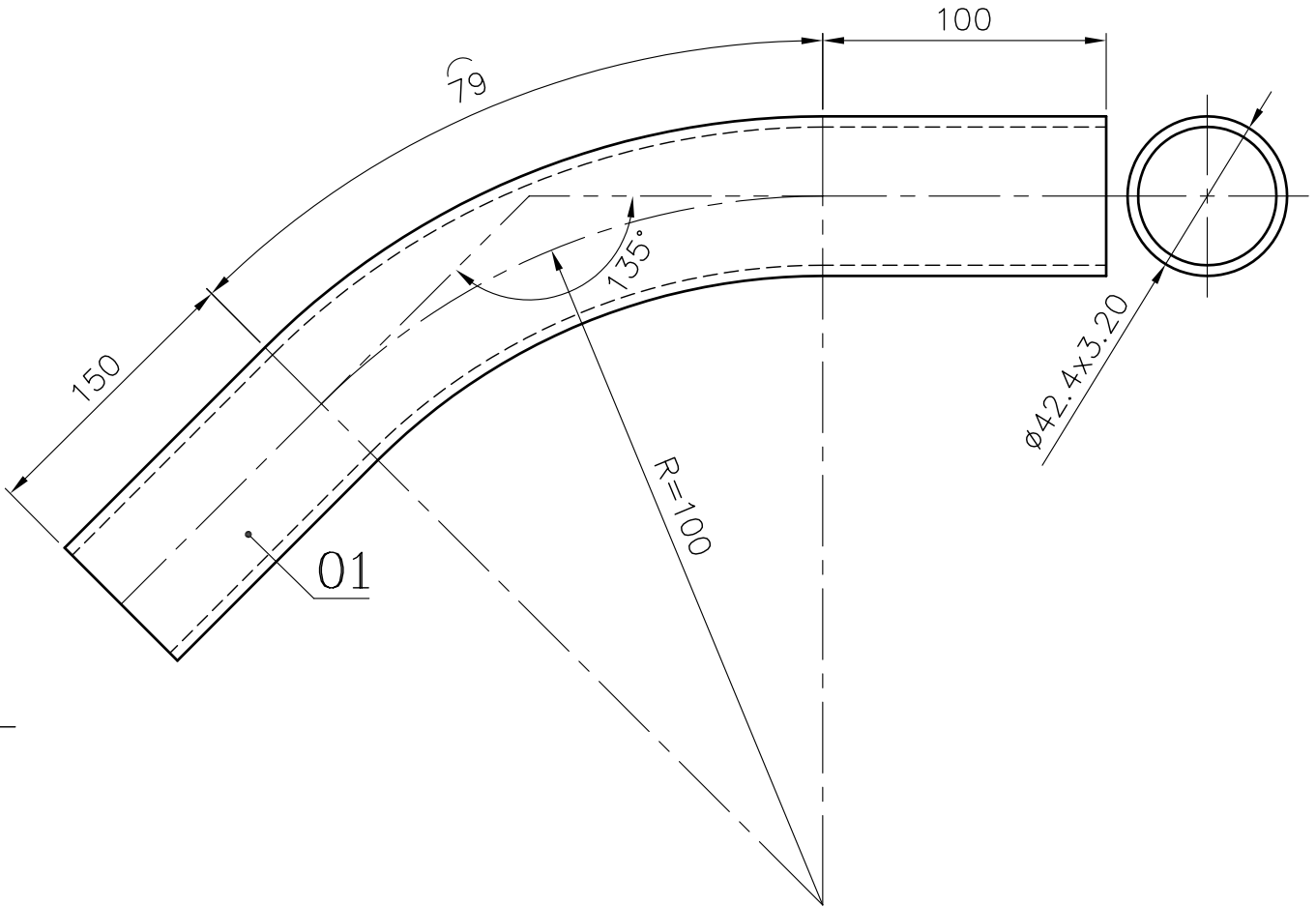
NOTE:

FOR NOTES REFER DRG. No.3-35-851-00694

02	TUBE ERW ø42.4x3.20X379	150386260000 IS1161-YST240	1.172
VARIANT NUMBER	DESCRIPTION	STD	UNIT WEIGHT
			QUANTITY

 355-056	Bharat Heavy Electricals Ltd UNIT: HIGH PRESSURE BOILER PLANT TIRUCHIRAPALLI - 620014	DRN	NAME J.IMAYA	SIGNATURE	DATE 29.09.04
		CHD	G.R.D		29.09.04
		APPD	R.R.S		29.09.04
DEPT ST	ALL DIMENSIONS ARE IN MM	PROJECTION 	SCALE N.T.S	WEIGHT (Kg)	REF TO ASSY / OLD DWG
CODE 122					
TITLE 135° BEND FOR FLOORS (DIA 42.4x3.20)				DRAWING NO : 4-36-850-00415	REV 02


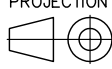
REV 01	DATE 16-05-05	ALTERED : R.S CHD & APPD : R.R.S	REV 02	DATE 14.07.05	ALTERED CHD & APPD	S.MOINUDEEN R.R.S
MATERIAL CODE UPDATED			MATERIAL CODE UPDATED			FOR TOLERANCES OF UNTOLERANCED DIMENSIONS DURING MANUFACTURE REFER PLANT STD. NO TP 023 0299



NOTE:

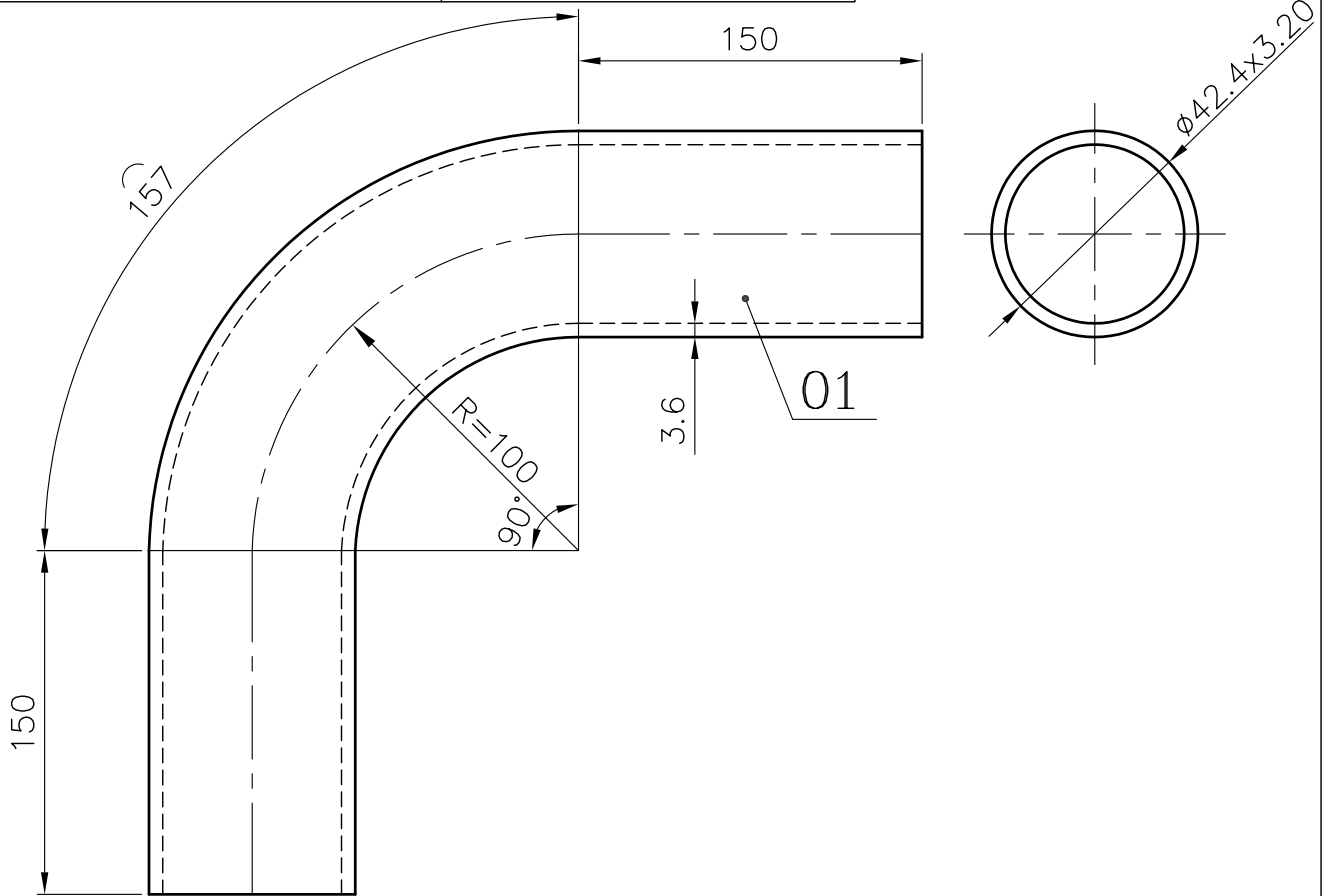
FOR NOTES REFER DRG. No.3-35-851-00694

<div>02</div>		TUBE ERW		150386260000		1.018
		ø42.4x3.20X329		IS1161–YST240		1
	VARIANT NUMBER	DESCRIPTION	STD	MATERIAL CODE	A/C/P UNIT	UNIT WEIGHT
				MATERIAL SPECN		QUANTITY

 355-056	Bharat Heavy Electricals Ltd UNIT: HIGH PRESSURE BOILER PLANT TIRUCHIRAPALLI - 620014	DRN	NAME J.IMAYA	SIGNATURE	DATE 29.09.04
		CHD	G.R.D		29.09.04
		APPD	R.R.S		29.09.04
DEPT ST	ALL DIMENSIONS ARE IN MM	PROJECTION 	SCALE N.T.S	WEIGHT (Kg)	REF TO ASSY / OLD DWG
CODE 122					
TITLE 135° BEND FOR STAIRS (DIA 42.4x3.20)				DRAWING NO : 4-36-850-00416	REV 02

REV	DATE	ALTERED : R.S	REV	DATE	ALTERED	S.MOINUDEEN
01	16-05-05	CHD & APPD : R.R.S	02	14.07.05	CHD & APPD	R.R.S
MATERIAL CODE UPDATED			MATERIAL CODE UPDATED			


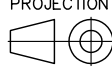
FOR TOLERANCES OF UNTOLERANCED
DIMENSIONS DURING MANUFACTURE
REFER PLANT STD. NO TP 023 0299



NOTE:

FOR NOTES REFER DRG. No.3-35-851-00694

<div>02</div>		TUBE ERW ø42.4x3.20X457		150386260000			1.414
				IS1161–YST240			1
	VARIANT NUMBER	DESCRIPTION	STD	MATERIAL CODE	A/C/P	UNIT	UNIT WEIGHT
				MATERIAL SPECN			QUANTITY

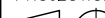
<div><div><div>बि.एच.ई.एल.</div><div></div><div>355-056</div></div><div><div>Bharat Heavy Electricals Ltd</div><div>UNIT: HIGH PRESSURE BOILER PLANT</div><div>TIRUCHIRAPALLI – 620014</div></div></div>		DRN	NAME J.IMAYA	SIGNATURE	DATE 29.09.04	
		CHD	G.R.D		29.09.04	
		APPD	R.R.S		29.09.04	
DEPT ST	ALL DIMENSIONS ARE IN MM		SCALE N.T.S	WEIGHT (Kg)	REF TO ASSY / OLD DWG	
CODE 122						
TITLE 90° BEND (DIA 42.4x3.20)					DRAWING NO : 4-36-850-00417	
					REV 02	

FOR TOLERANCES OF UNTOLERANCED
DIMENSIONS DURING MANUFACTURE
REFER PLANT STD. NO TP 023 0299



02

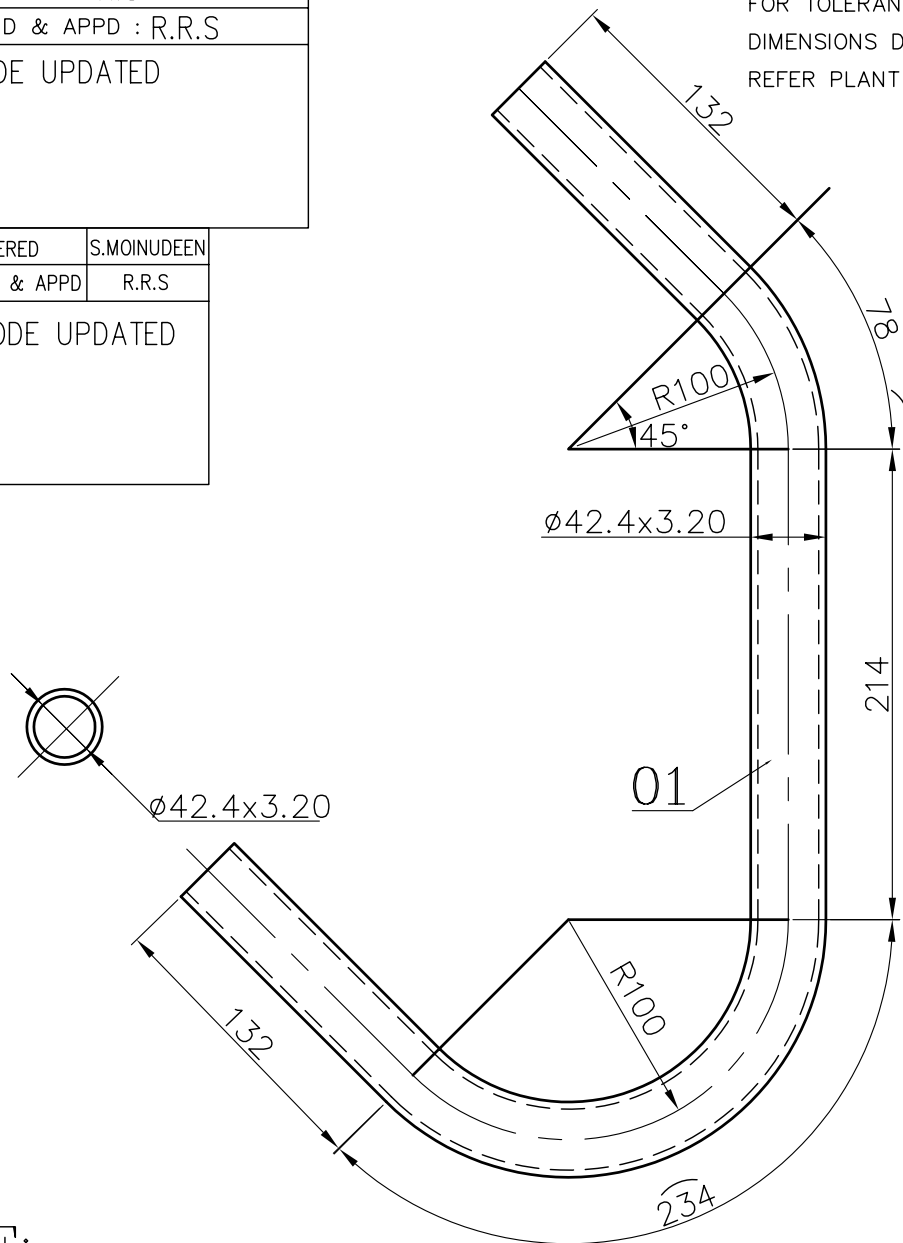


DEPT ST	ALL DIMENSIONS ARE IN MM	PROJECTION 	SCALE N.T.S	WEIGHT (Kg)	REF TO ASSY / OLD DWG
CODE 122					
TITLE 'C' TYPE BEND FOR STAIRS (DIA 42.4x3.20)				DRAWING NO : 4-36-850-00419	
				REV 02	

REV	DATE	ALTERED : R.S
01	16-05-05	CHD & APPD : R.R.S
MATERIAL CODE UPDATED		

REV	DATE	ALTERED	S.MOINUDEEN
02	14.07.05	CHD & APPD	R.R.S
MATERIAL CODE UPDATED			


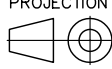
FOR TOLERANCES OF UNTOLERANCED
DIMENSIONS DURING MANUFACTURE
REFER PLANT STD. NO TP 023 0299



NOTE:

FOR NOTES REFER DRG. No.3-35-851-00694

02	01	TUBE ERW 42.4x3.20x790	150386260000 IS1161-YST240			2.443
						1
VARIANT NUMBER	DESCRIPTION	STD	MATERIAL CODE	A/C/P	UNIT	UNIT WEIGHT
			MATERIAL SPECN			QUANTITY

 355-056		Bharat Heavy Electricals Ltd UNIT: HIGH PRESSURE BOILER PLANT TIRUCHIRAPALLI - 620014		DRN	NAME J.IMAYA	SIGNATURE	DATE 29.09.04
				CHD	G.R.D		29.09.04
				APPD	R.R.S		29.09.04
DEPT ST	ALL DIMENSIONS ARE IN MM	PROJECTION 	SCALE N.T.S	WEIGHT (Kg) 1.912	REF TO ASSY / OLD DWG		
CODE 122	TITLE SPECIAL BEND FOR STAIRS				DRAWING NO : 4-36-850-00420		REV 02

