

SIZE: 100 X 250 SQM

LAYOUT -3 x 660 MW BARH STPS - BHEL STORES

TITLE: DETLED SHD II PLAN

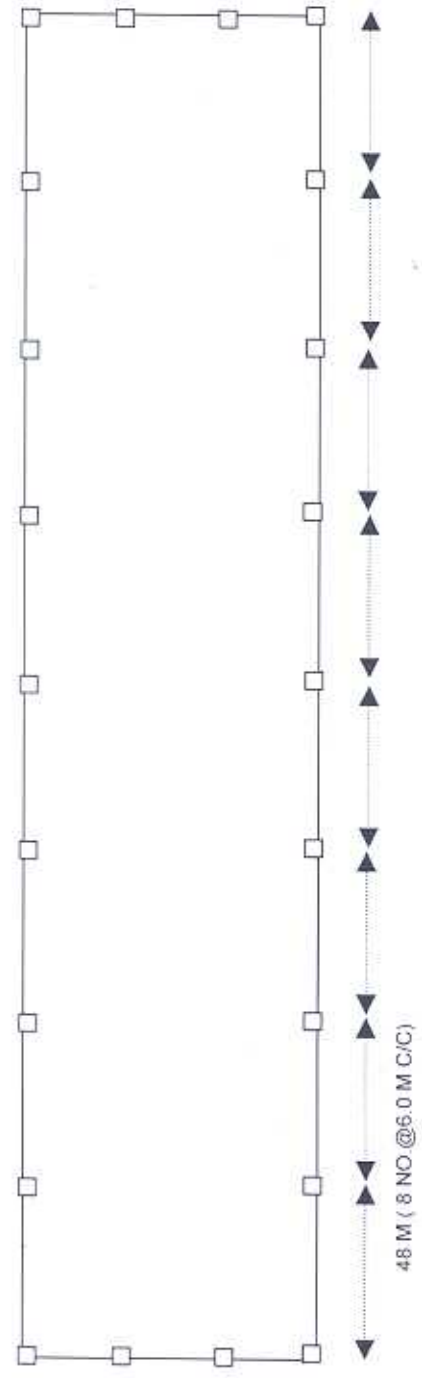
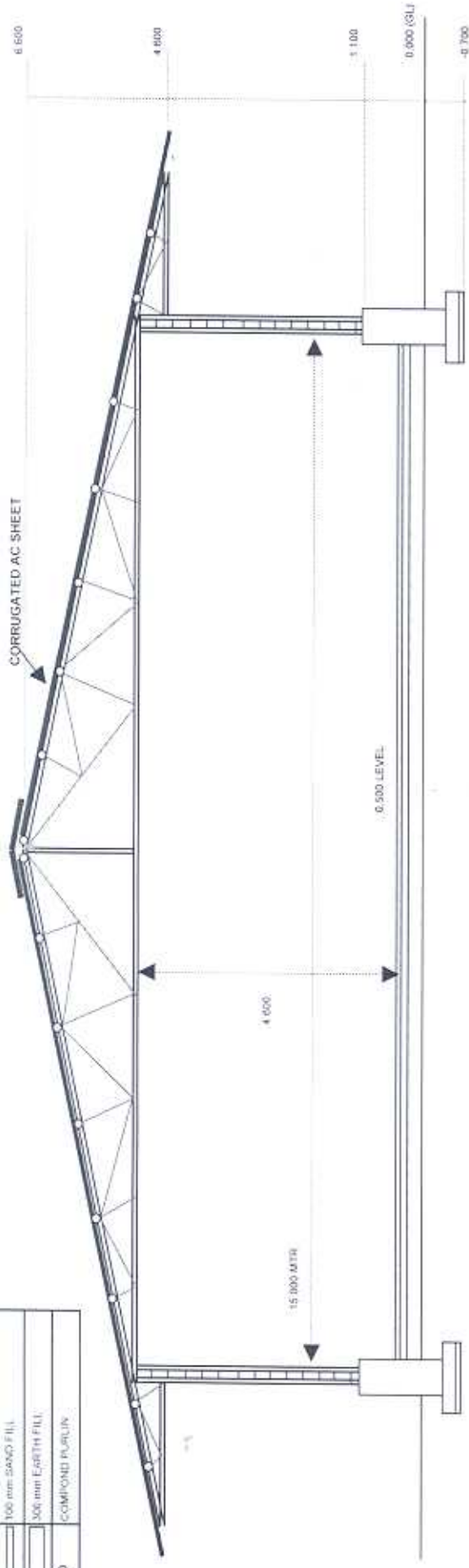
DRG. NO.:BAAR/SITE/004



Power Sector - Northern Region
Bharat Heavy Electricals Ltd.

LEGEND

	80 mm FCC
	100 mm SAND FILL
	300 mm EARTH FILL
	COMPOUND PURVIS



Power Sector - Northern Region
Bharat Heavy Electricals Ltd.

PROJECT:
 STORES AT 3 X 660 MW BARH STPS

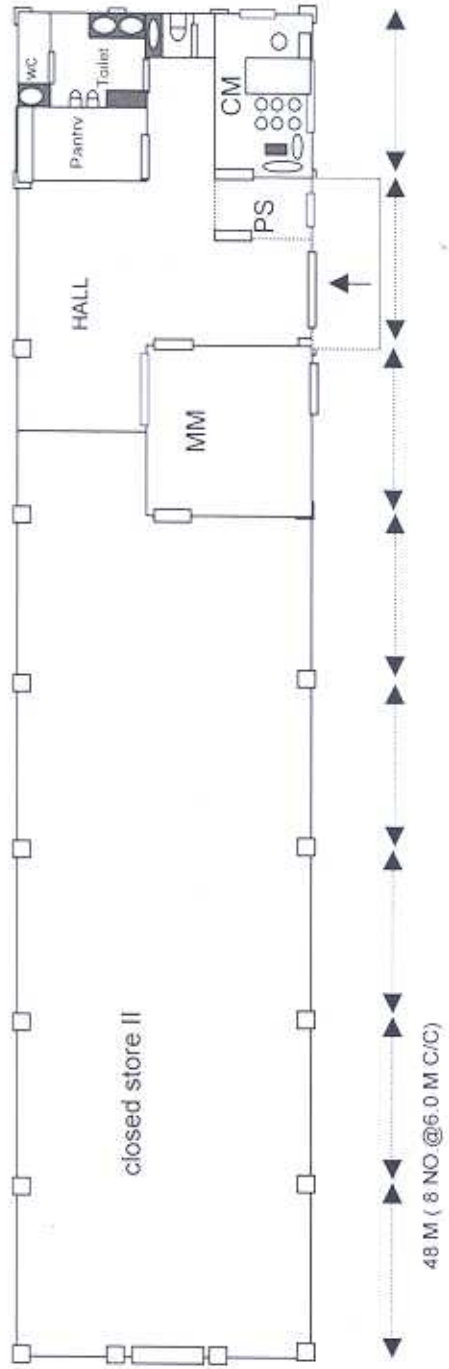
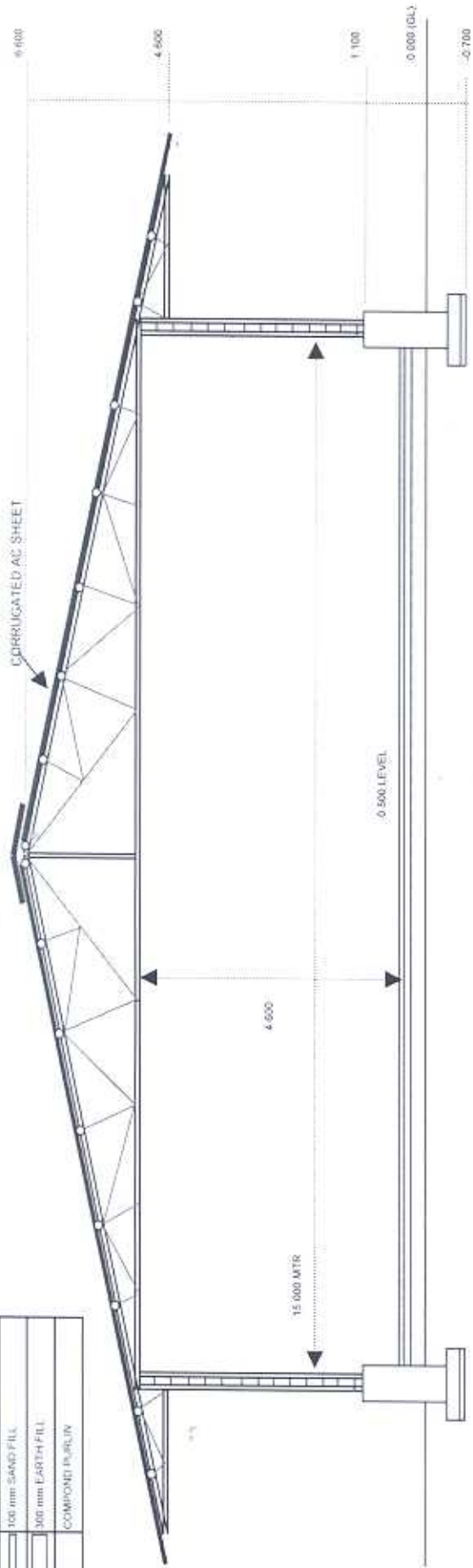
TITLE: STORAGE SHED COLUMNS &
 TRUSS LAYOUT PLAN

Made by: KSB

REV: 00

DATE:
 MAR 07

LEGEND
80 mm PCC
100 mm SAND FILL
300 mm EARTH FILL
COMPOUND PURLIN
○

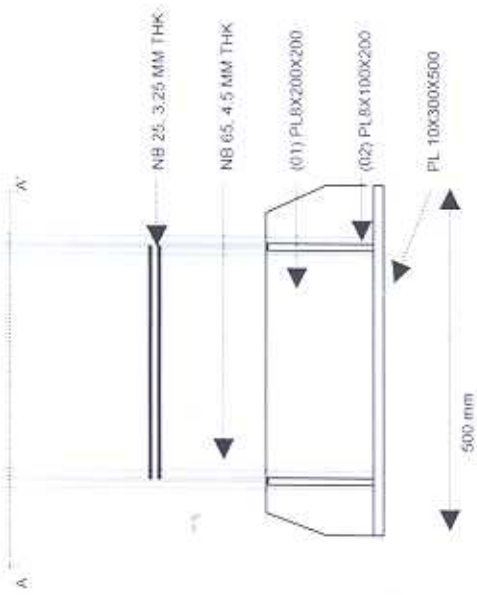


Power Sector - Northern Region
Bharat Heavy Electricals Ltd.

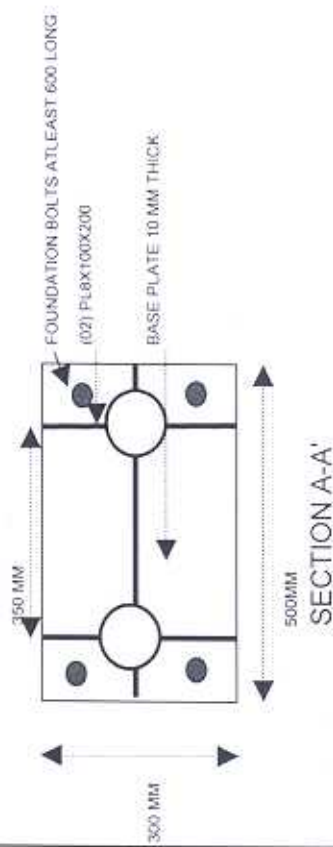
PROJECT:
 STORES AT 3 X 660 MW BARR STPS
 DRG. NO.:BAAR/SITE/005

TITLE: DET SHD II PLAN
 Made by: KSB
 Checked by:
 Approved by:

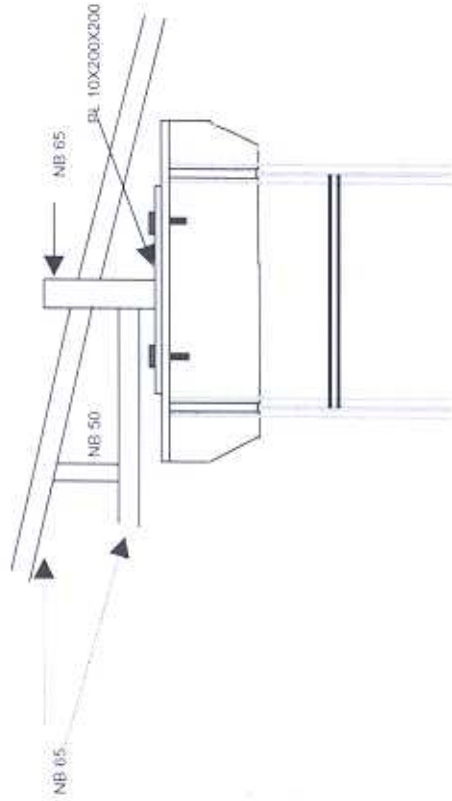
REV	DATE
00	MAR.07



BASE PLATE/COLUMN DETAIL



SECTION A-A'



Power Sector - Northern Region
Bharat Heavy Electricals Ltd.



PROJECT: STORES - AT 3 X 660 MW BARRH STPS		TITLE: STRUCTURAL STEEL		REV	DATE
ORG. NO.: BSA9/SITE/003		Made by	KSB	00	
Rev	00	Checked by			
		Approved by			

