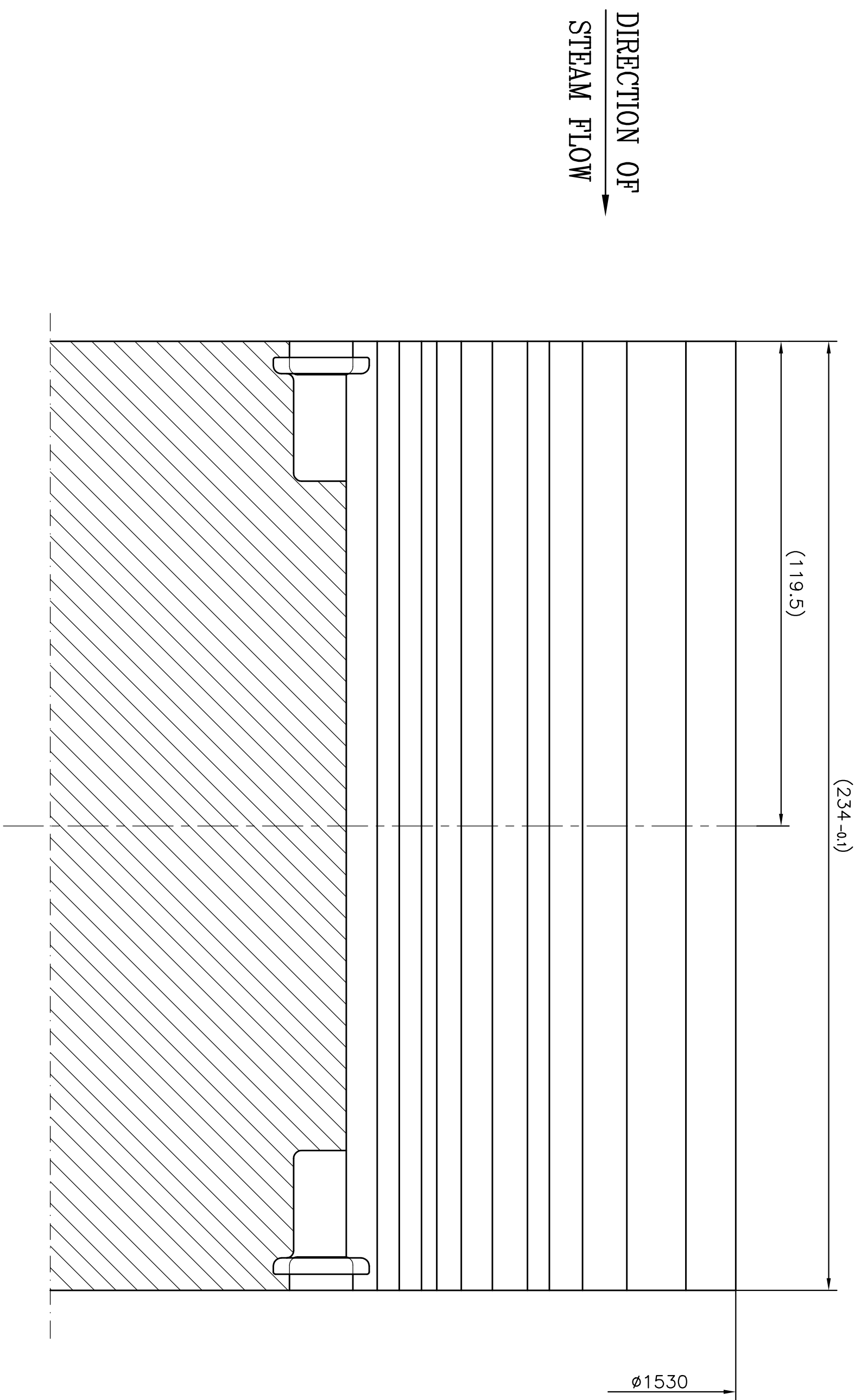
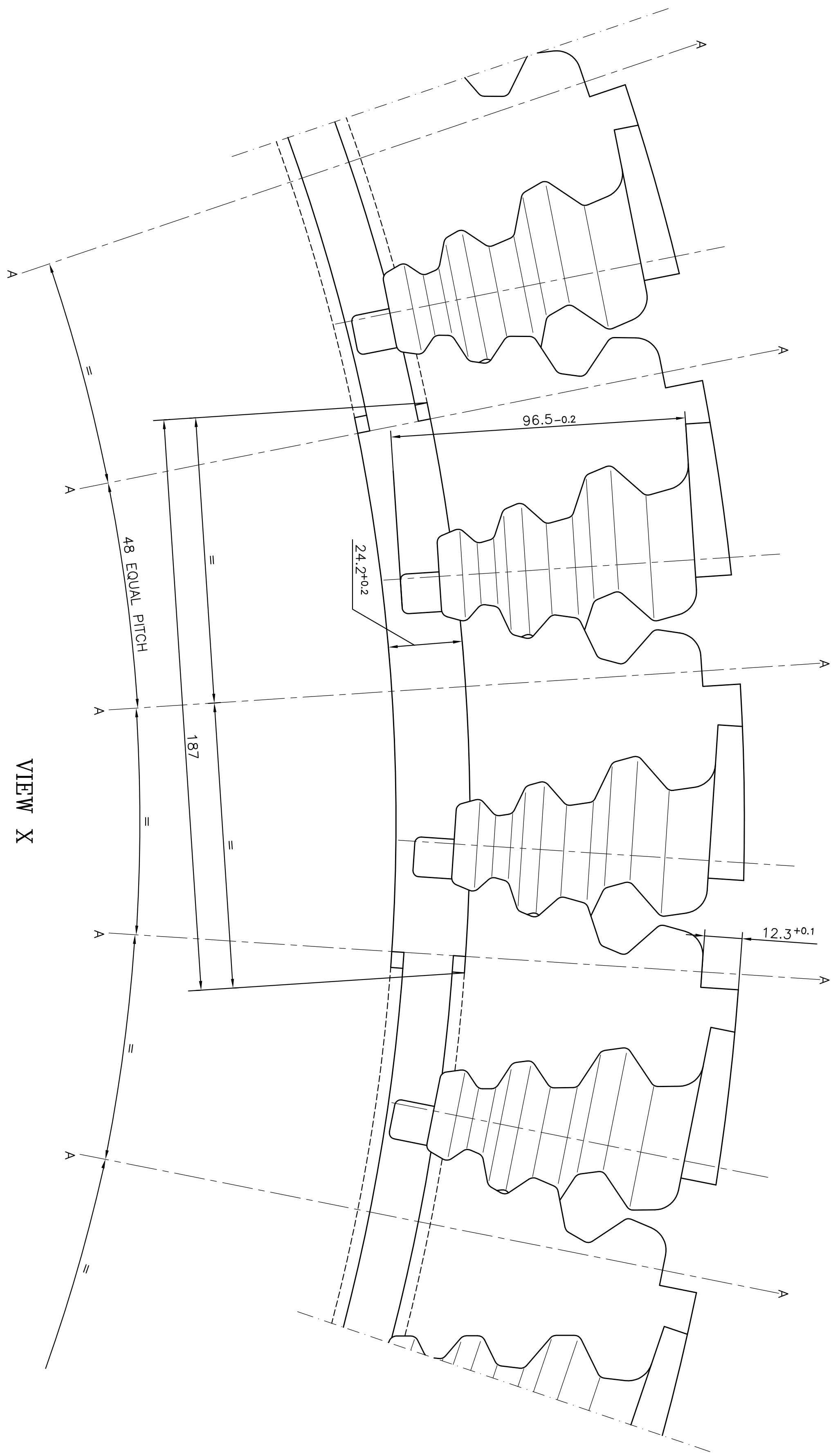


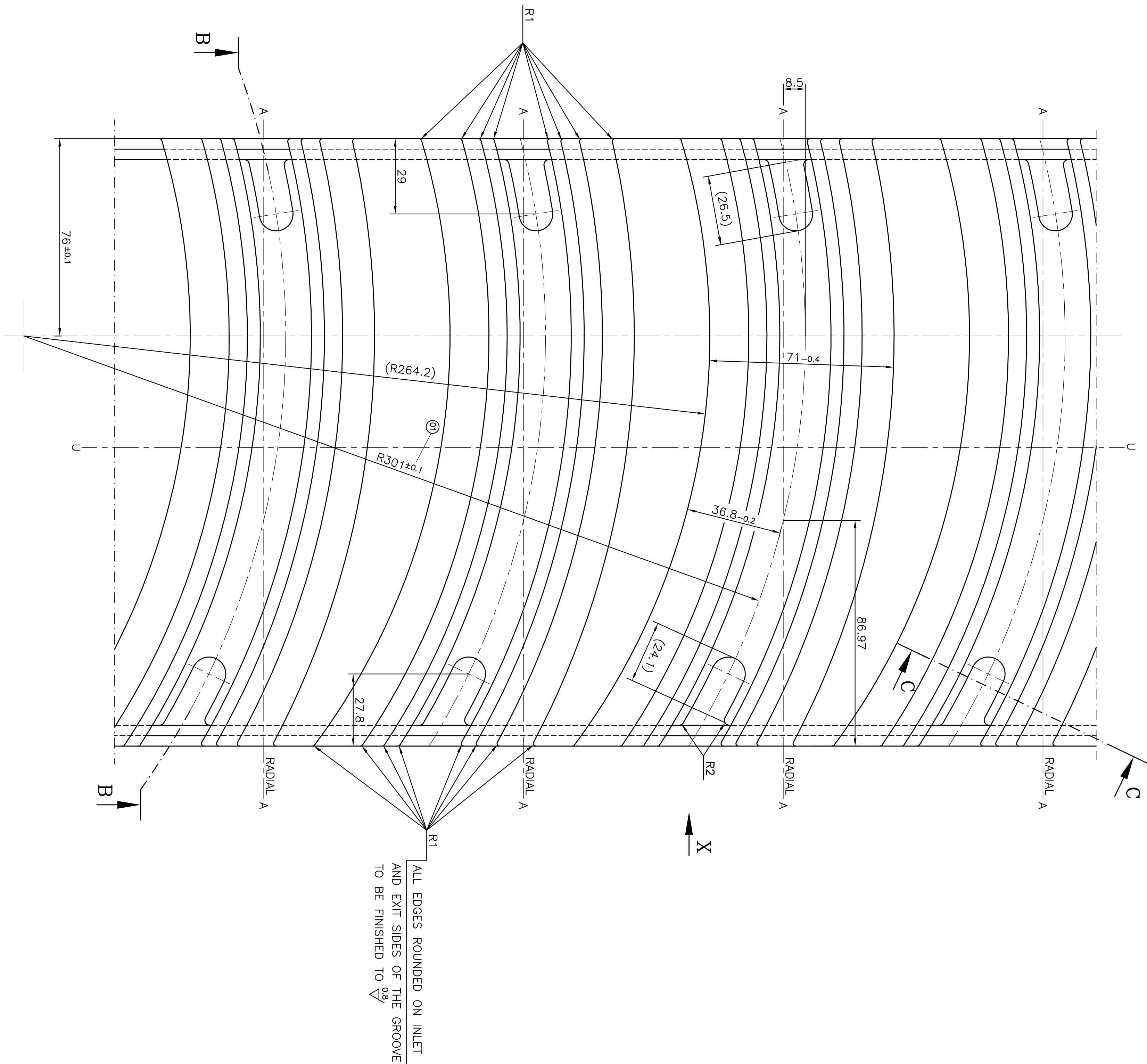
3.2/ ALL OVER EXCEPT
OTHERWISE STATED



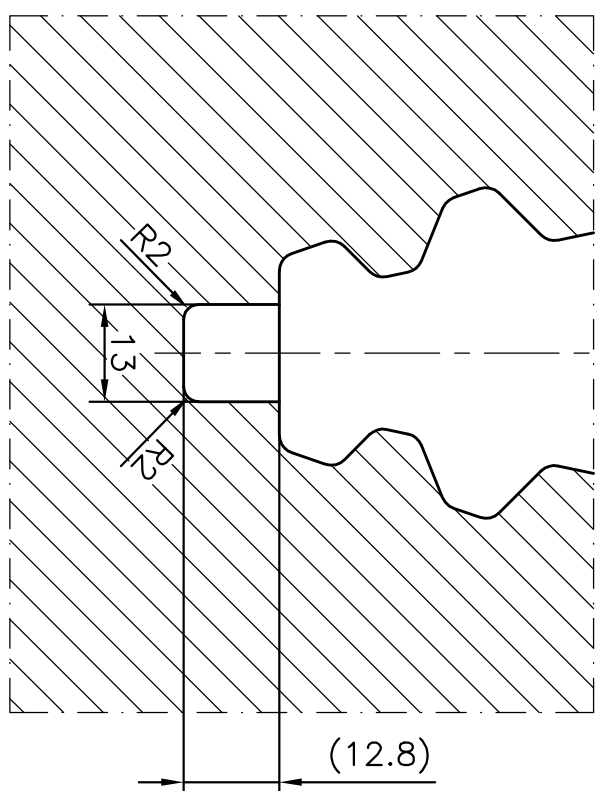
SECTION BB
(SEE T.R. 4)



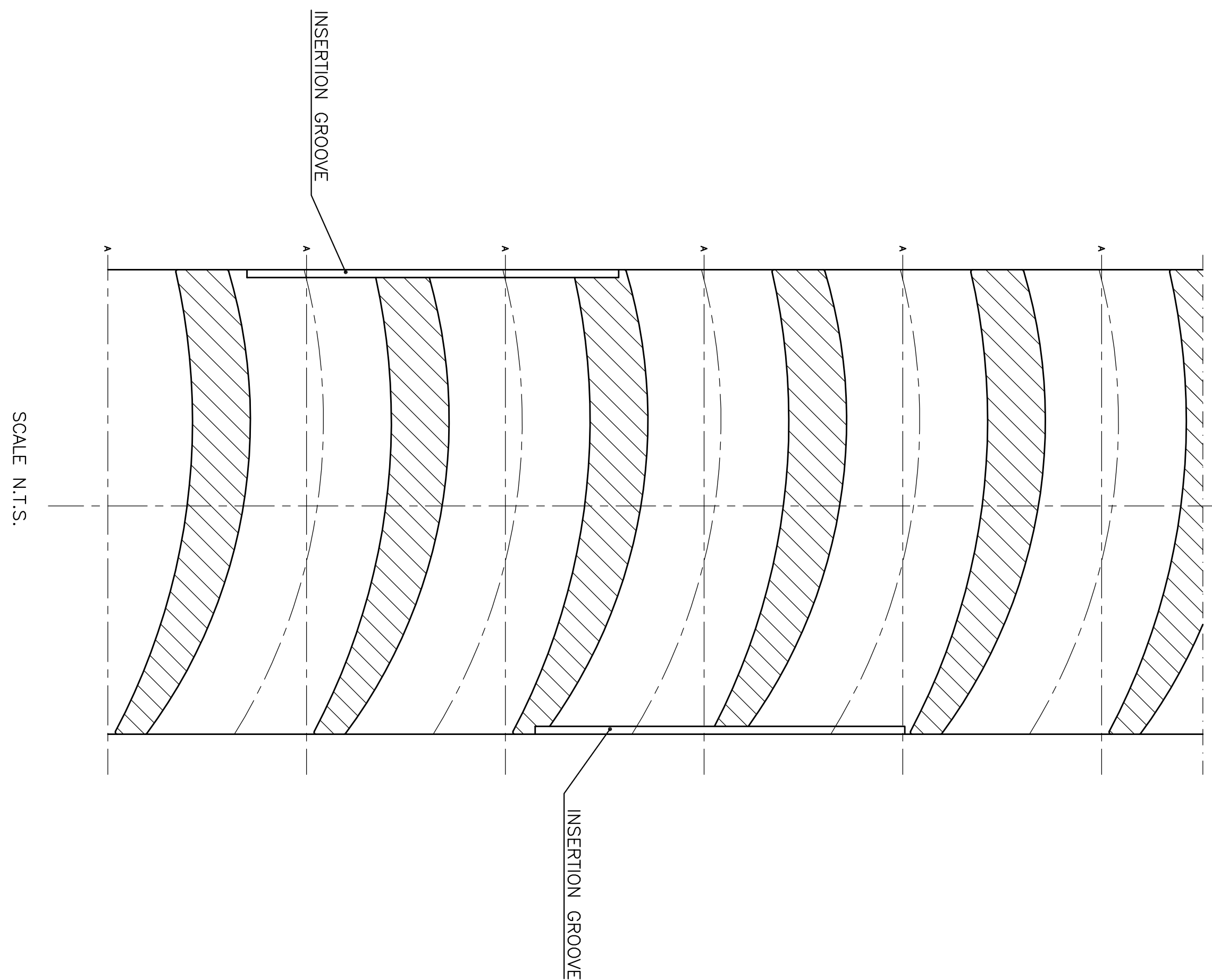
VIEW X



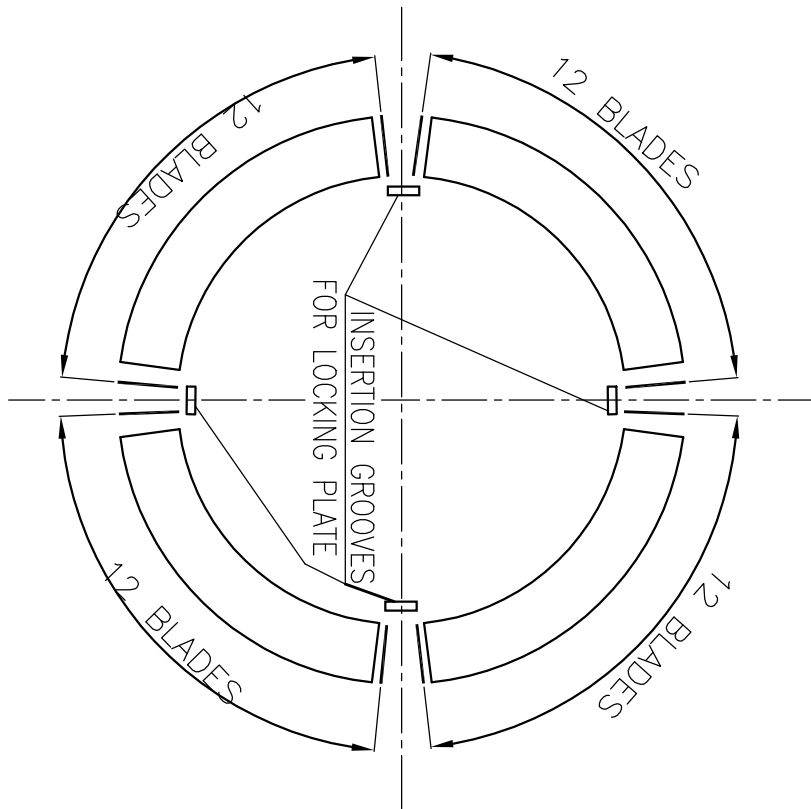
VIEW OF THE ROTOR GROOVE



SECTION CC



SCALE N.T.S.



TECHNICAL REQUIREMENTS:

1. GROOVE PROFILE AS PER DRG. NO. 21030741031.
2. LOCATION FOR INSERTION GROOVES FOR LOCKING PLATE AS PER DRG. NO. 01030746000.
3. TOLERANCE ON THE PITCH OF GROOVE $\pm 1.3^{\circ}$.
4. TURNING MACHINING ACCORDING TO GROOVE PLAN DRG. NO. 010304446051.

INVENTORY No.	SIGN & DATE	4052-54123 REF.DRAWING No.
---------------	-------------	-------------------------------

[illegible]

THE INFORMATION ON THIS DOCUMENT IS THE PROPERTY OF BHARAT HEAVY ELECTRICALS LIMITED.
IT MUST NOT BE USED DIRECTLY OR INDIRECTLY IN ANY WAY DETERIMENTAL TO THE INTEREST OF THE COMPANY

AO SIZE