

EQUIPMENT EARTHING DETAILS  
DETAILS OF PIPE EARTH ELECTRODE  
IN TREATED EARTH PIT (ET)

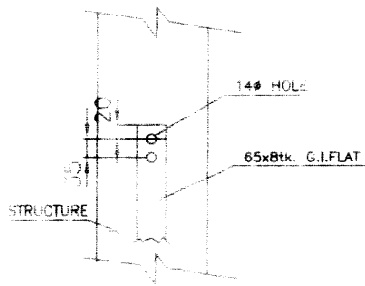
COMPUTER REF NO.  
E/RAWA/JAYPORE/EQPER/PIT-ELECT

DRG. No.

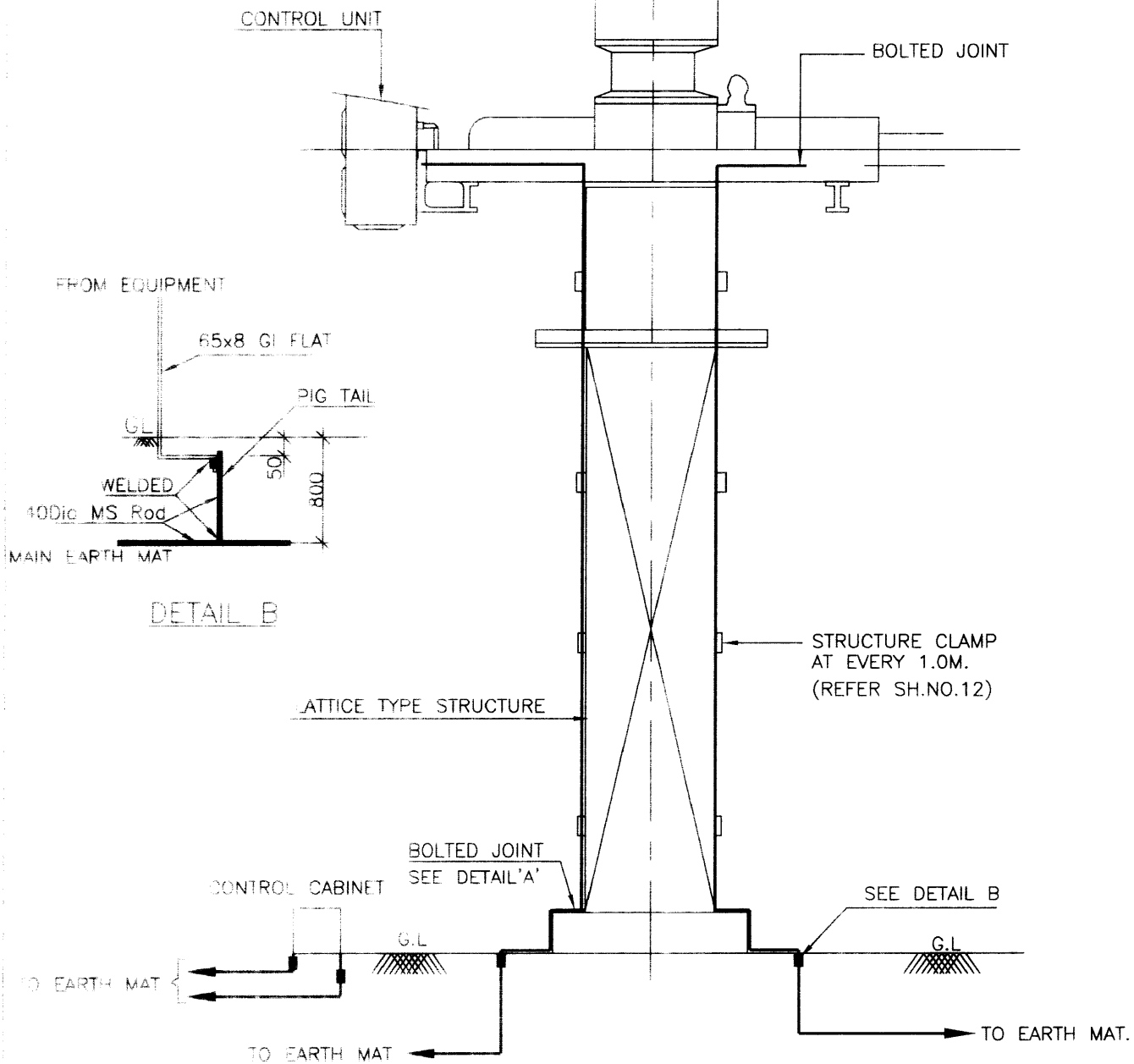
SK/TBEM/JAYPORE/001

REV. 00

SHEET No.  
01



DETAIL-A

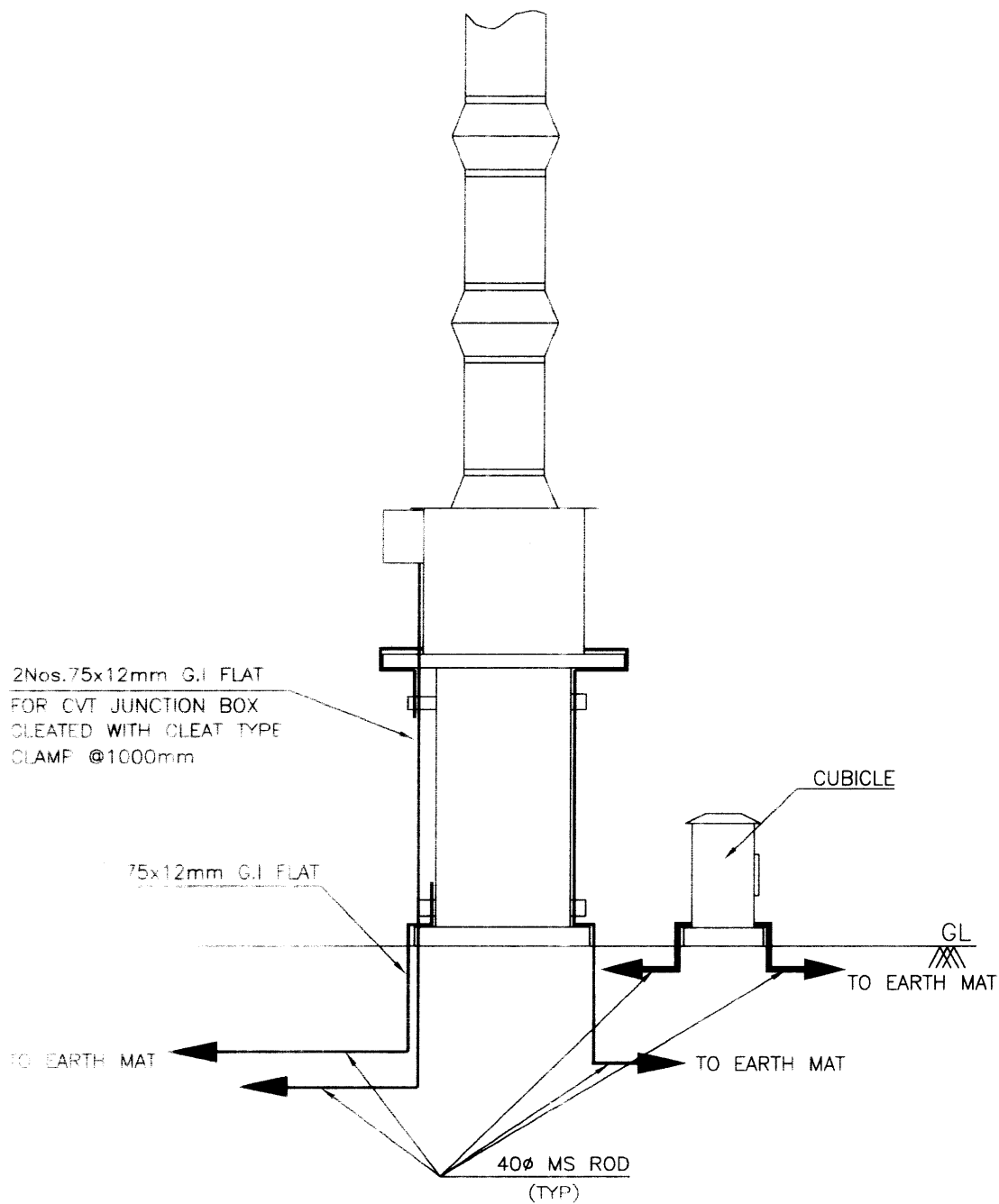


NOTE

1. LOCAL CONTROL CABINET & COMPRESSOR UNIT SHALL BE EARTHED SEPARATELY.



# EQUIPMENT EARTHING DETAILS 400kV CIRCUIT BREAKER EARTHING



NOTE:

1) FOR RISER DETAIL REFER SHEET # 16.



## EQUIPMENT EARTHING DETAILS

400kV kV CVT

COMPUTER REF. NO.  
D:\RAWAT\MURADNAGAR\EQ-ERTH\SH3

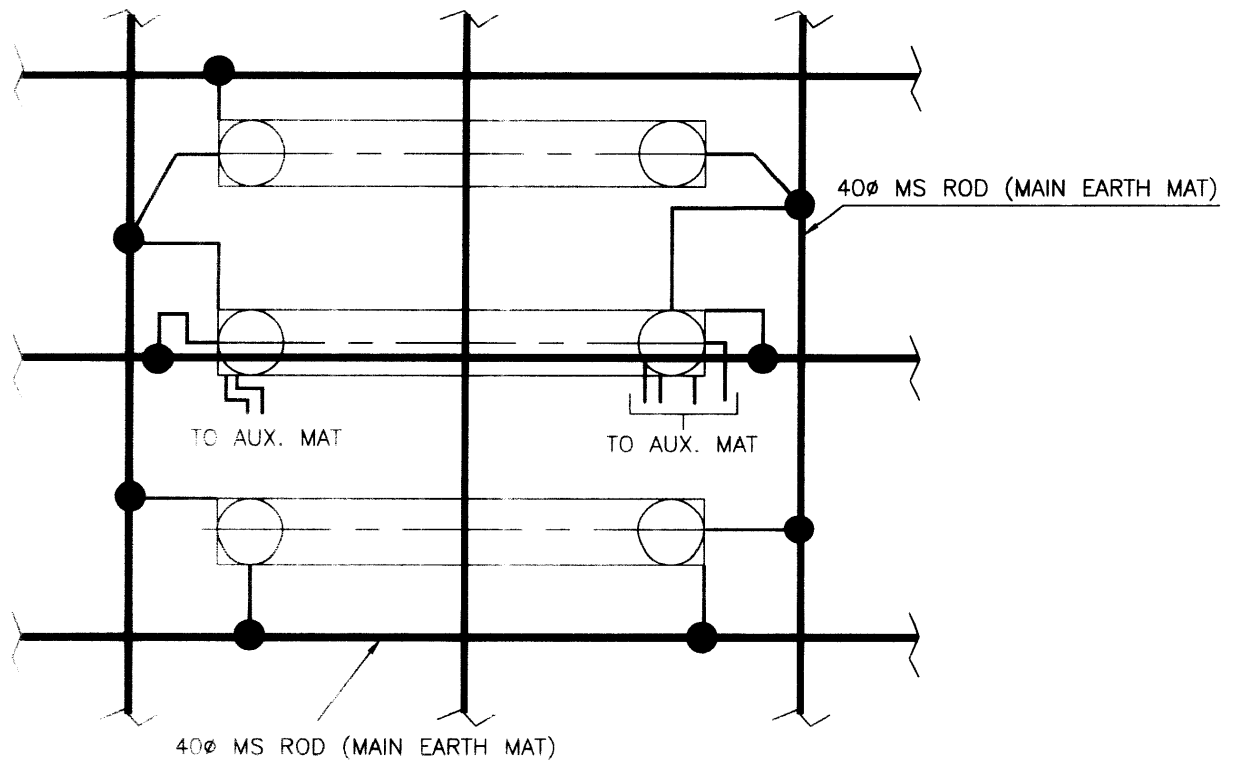
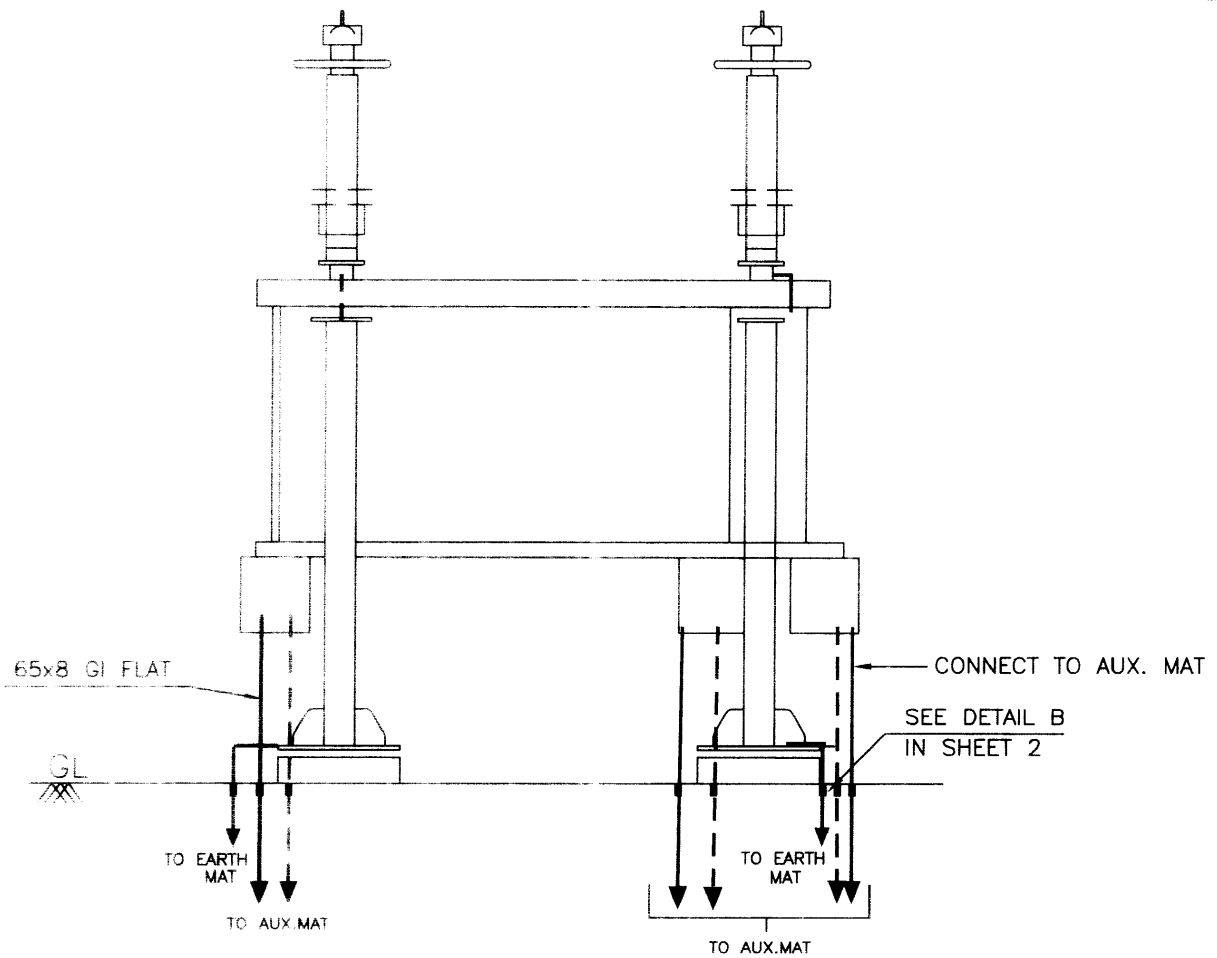
DRG. No.

TB 4 210 509 005

REV. 00

SHEET No.  
3





#### NOTES

1. FOR 400kV AUXILIARY EARTH MAT REFER SHEET NO. 17

● RISER



## EQUIPMENT EARTHING DETAILS

HORIZONTAL CENTER BREAK

ISOLATOR (TYPICAL) WITH TWO EARTH SWITCHES

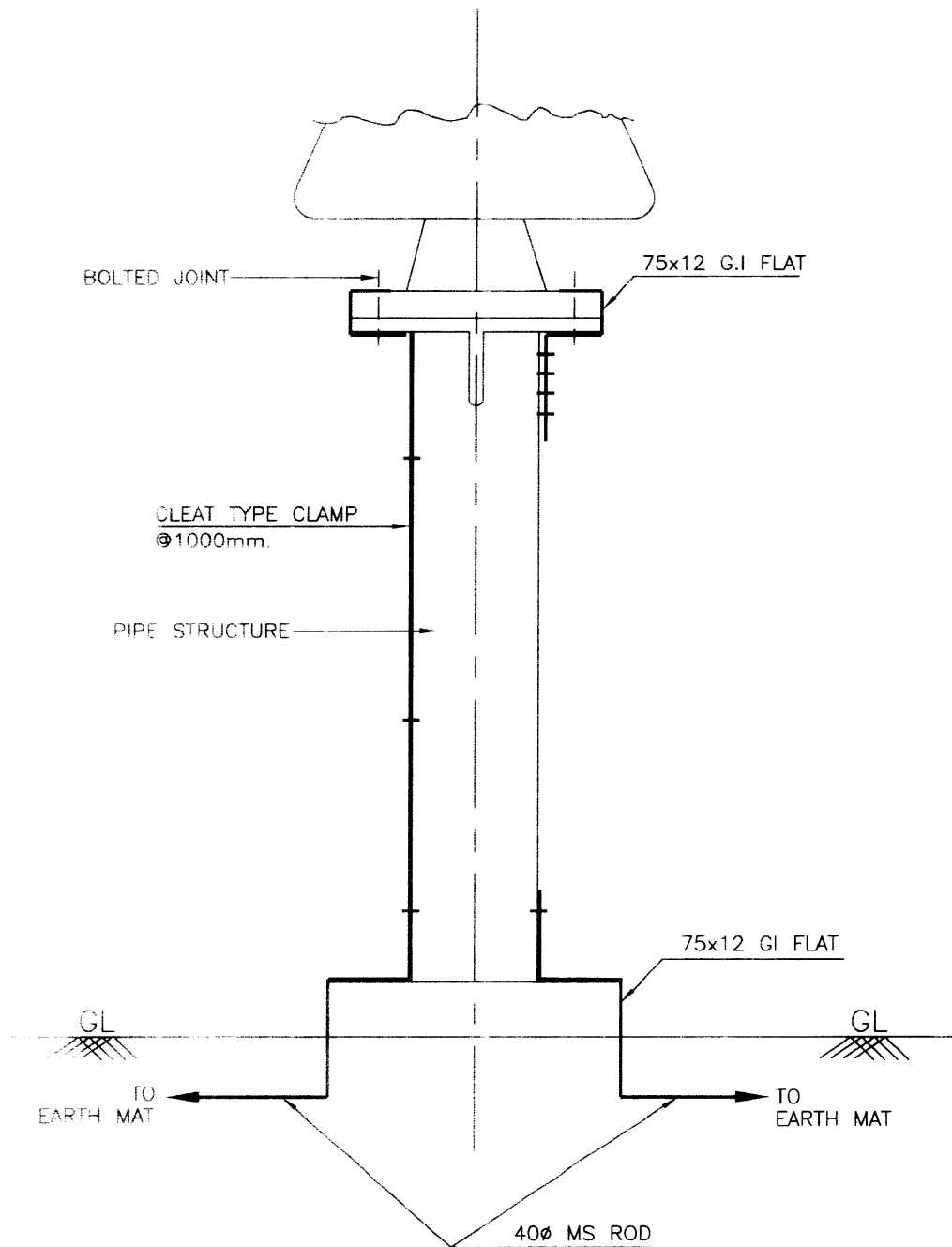
COMPUTER REF. NO.  
D/RAW/MAT/GREATER-NOIDA/EOPER/SH5

DRG. No.

TB-4-189-509-008

REV. 00

SHEET No.  
4A



NOTE:-

1) FOR RISER DETAIL REFER SHEET # 16.



# EQUIPMENT EARTHING DETAILS POST INSULATOR EARTHING (SOLID CORE TYPE)

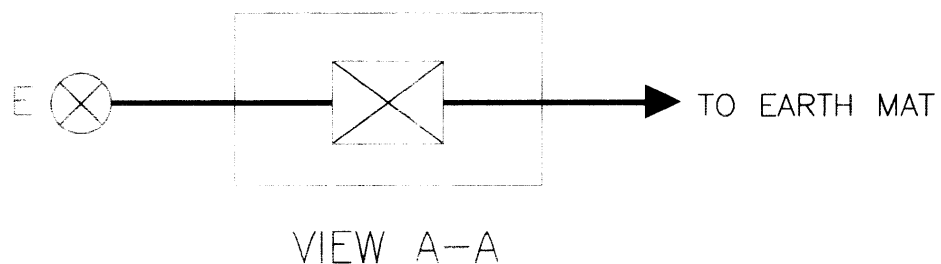
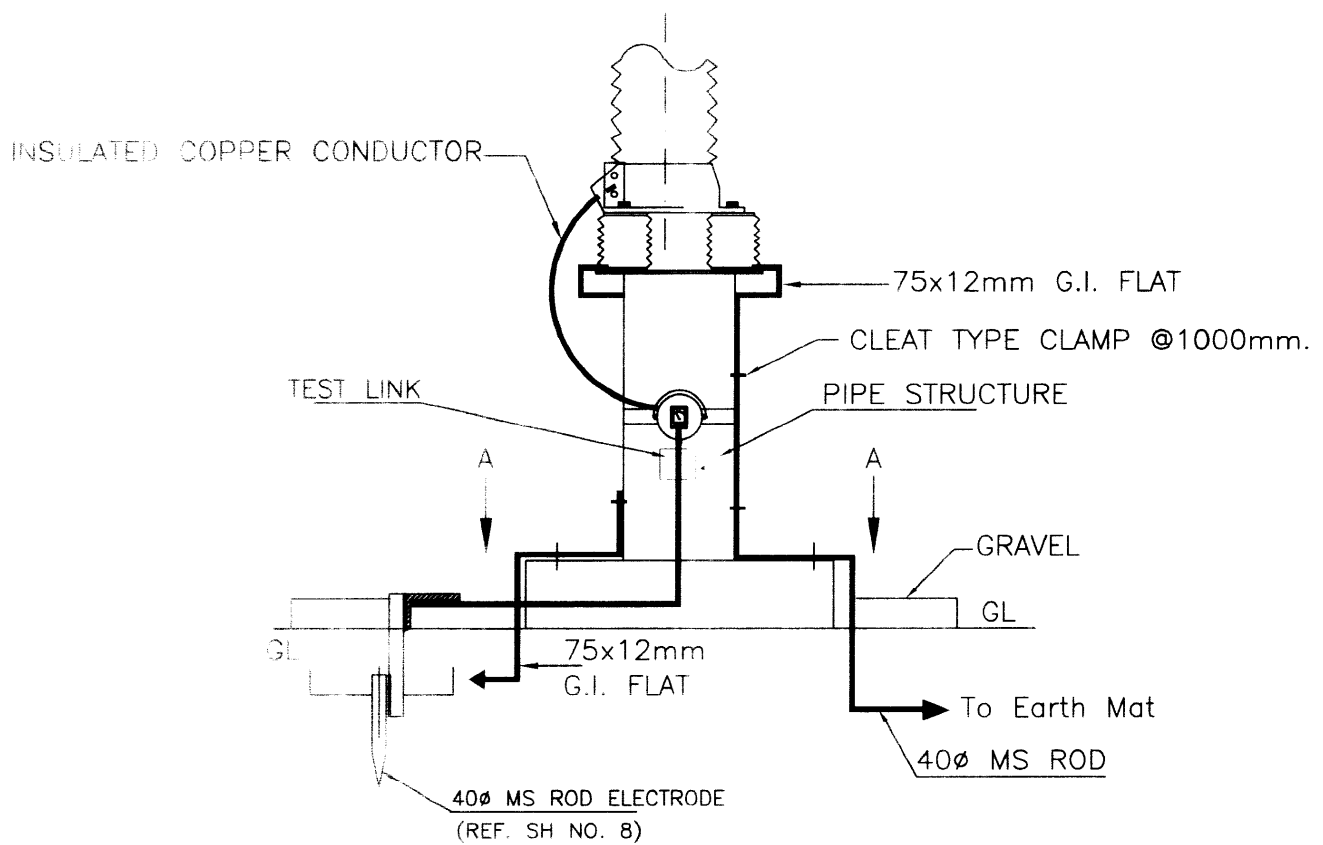
COMPUTER REF. NO.  
D:\RAWAT\MURADNAGAR\EQ-ERTH\SH5

DRG. No.

TB 4 210 509 005

REV. 00

SHEET No.  
5



1. LA SHALL BE EARTHED THROUGH EARTH TERMINAL OF SURGE COUNTER
2. NO. OF ELECTRODE= 1No. PER PHASE
3. FOR RISER DETAIL REFER SHEET # 16.



## EQUIPMENT EARTHING DETAILS

### LIGHTNING ARRESTER

COMPU. DRG. REF.  
D:\RAWAT\MURADNAGAR\EQ-ERTH\SH6

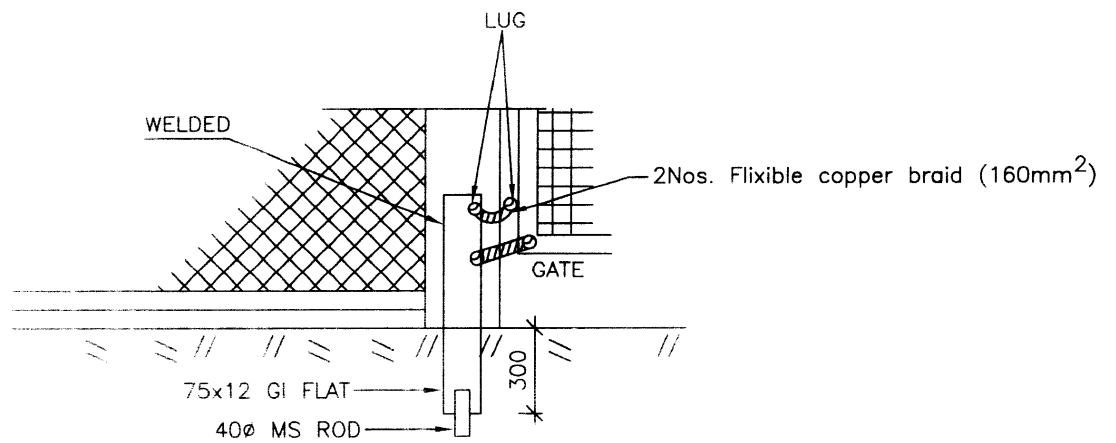
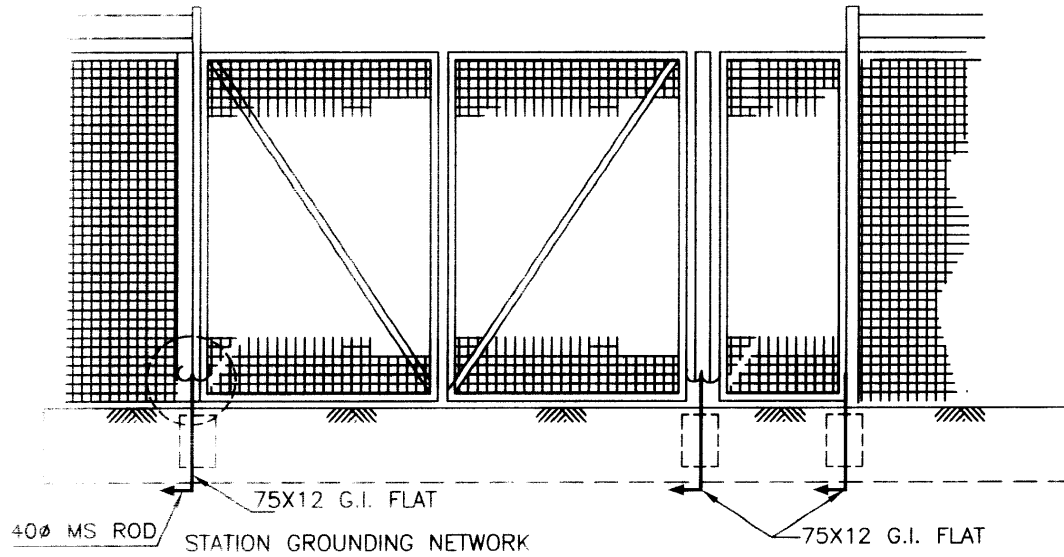
DRG.NO.

TB 4 210 509 005

REV. 00

SHEET No.  
6

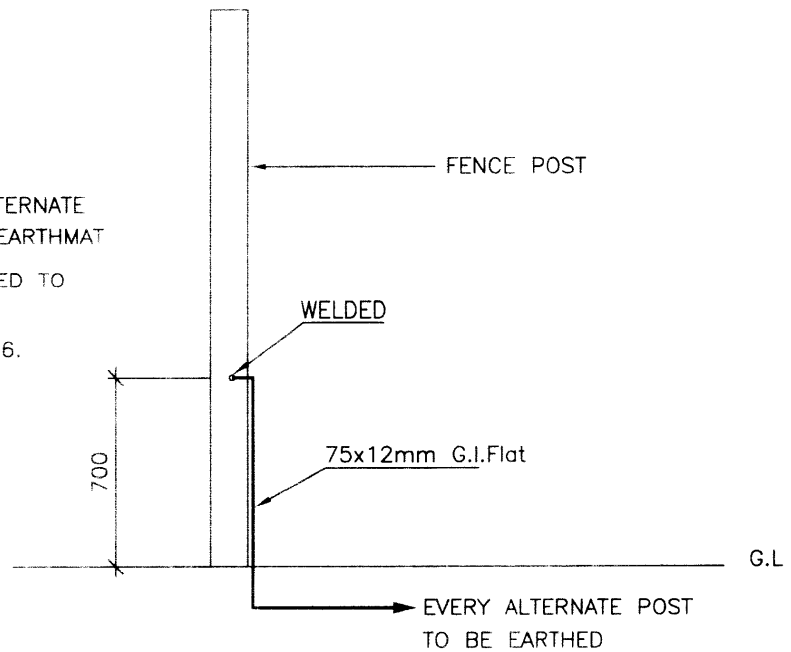
## FENCE AND GATE GROUNDING



Principal arrangement for earthing of fence and gate

### NOTE:

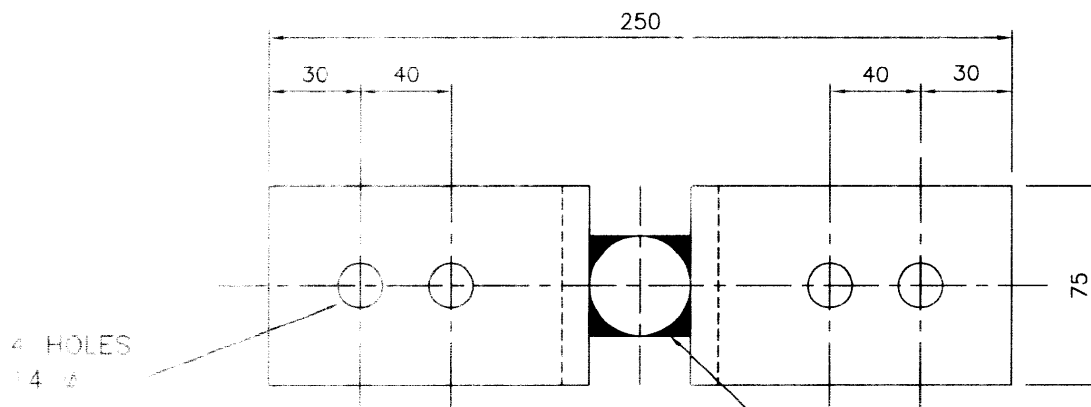
1. CORNER FENCE POST AND EVERY ALTERNATE FENCE POST TO BE CONNECTED TO EARTHMAT
2. ALL FENCE CORNER TO BE CONNECTED TO ROD ELECTRODE
3. FOR RISER DETAIL REFER SHEET # 16.



## EQUIPMENT EARTHING DETAILS

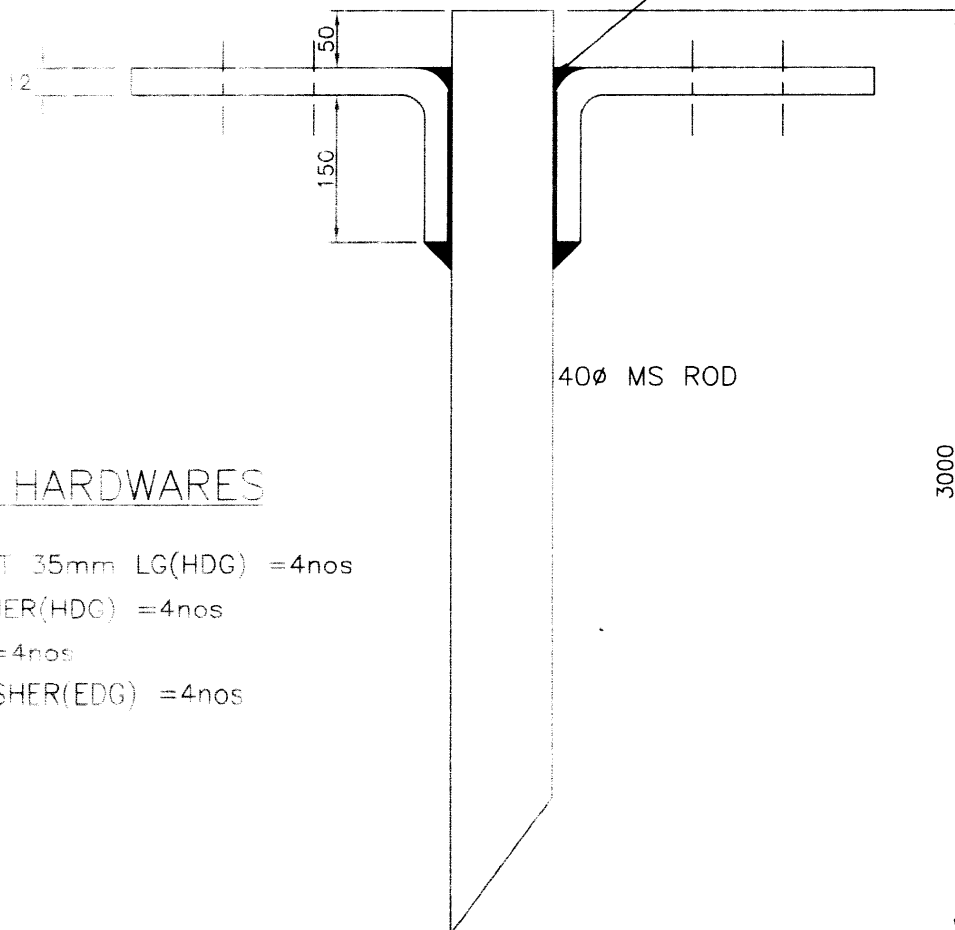
### FENCE EARTHING





PLAN

WELDING



40Ø MS ROD

3000

NOTES

BQO OF HARDWARES

1. M 12Ø BOLT 35mm LG(HDG) =4nos
2. PLAIN WASHER(HDG) =4nos
3. NUT(HDG) =4nos
4. SPRING WASHER(EDG) =4nos

ELEVATION

ROD ELECTRODE



EQUIPMENT EARTHING DETAILS

COMPU DRG REF

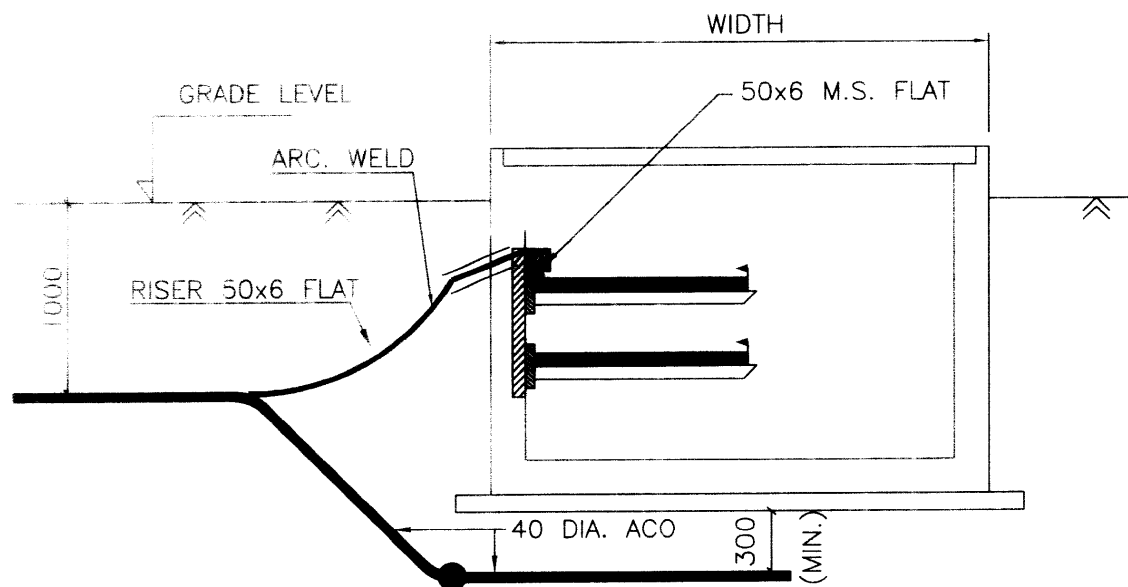
Report No.

TB 4 250 509 006

SHEET No.

08

E:\RAWAT\MAINPURI\EQPT-ER\SH8



# NOTE

1. ALL TRENCHES SHALL BE EARTHED AT AN INTERVAL OF 30M ALONG THE LENGTH OF TRENCH AND AT ALL BENDS & ENDS
2. THE EARTH STRIP SHALL BE WELDED TO EMBEDDED PLATE AT EVERY 0.75M INTERVAL



## EQUIPMENT EARTHING DETAILS CABLE TRENCH EARTHING (TYP.)

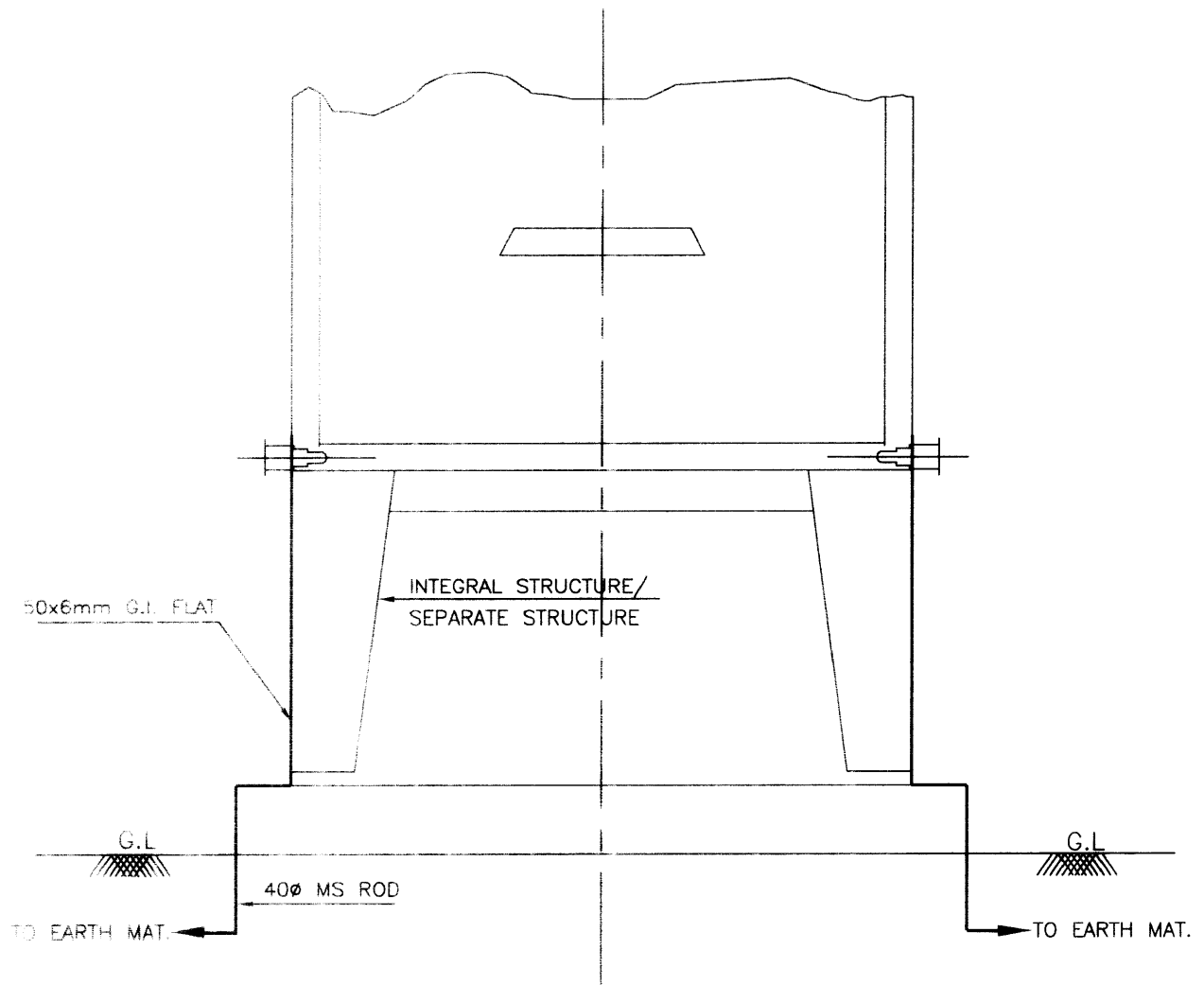
COMPU. DRG REF  
D:\RAWAT\MURADNAGAR\EQ-ERTH\SH09

DRG. NO

TB 4 210 509 005

REV 01

SHEET No.  
09



NOTE:—

1) FOR RISER DETAIL REFER SHEET # 16.



## EQUIPMENT EARTHING DETAILS MARSHALLING KIOSK EARTHING

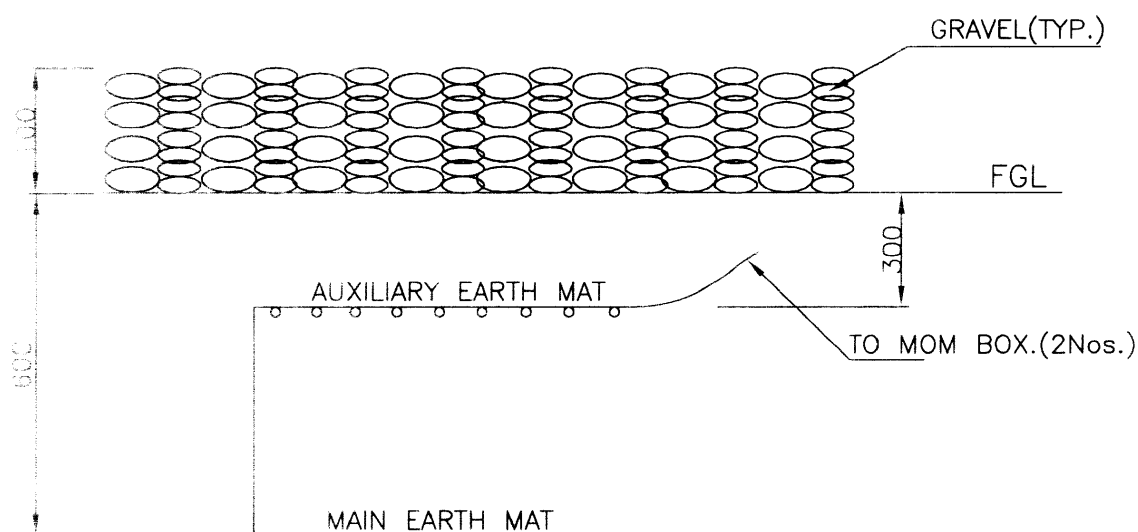
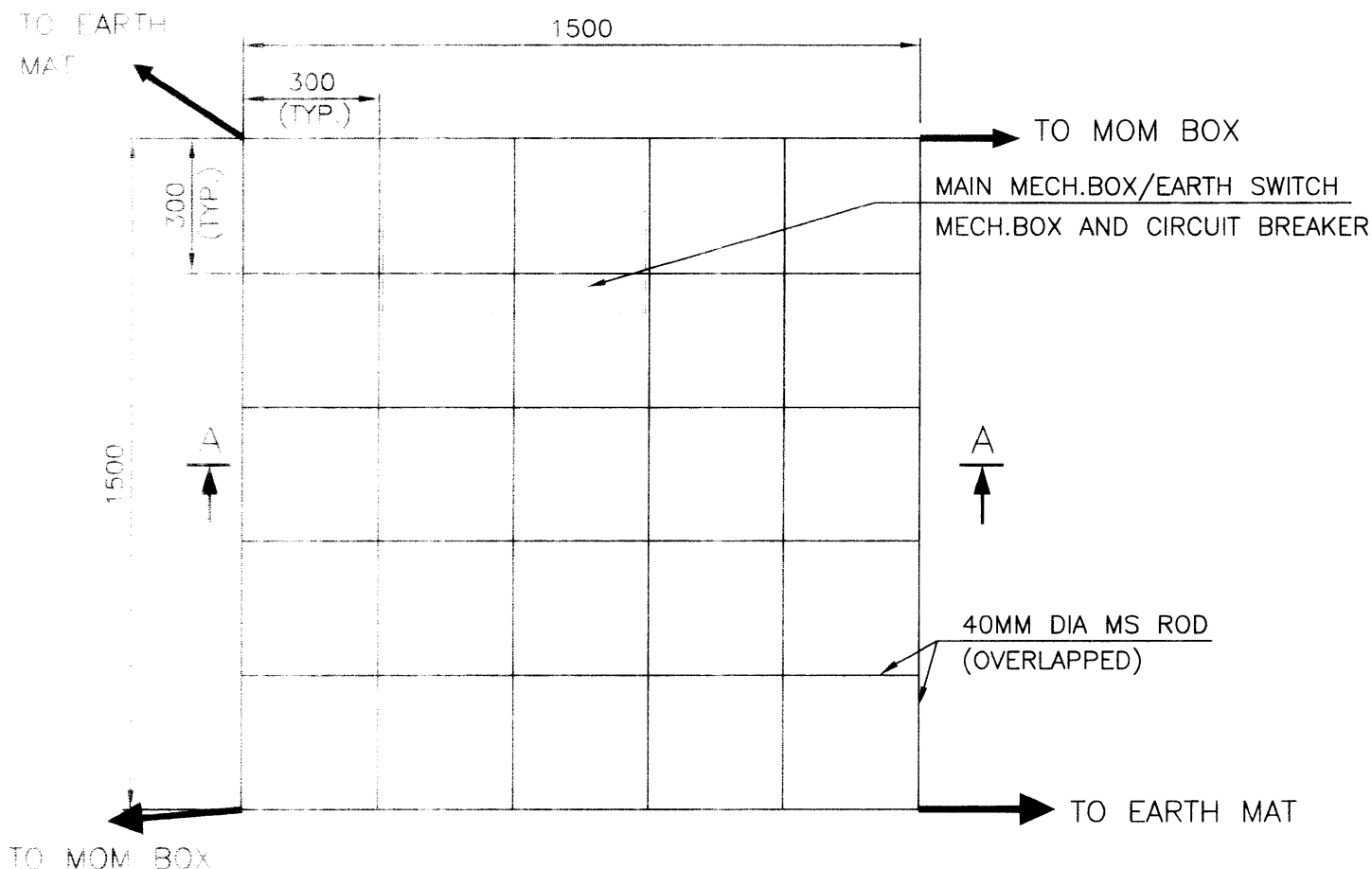
COMPUTER REF. NO.  
D:\RAMAT\MURADNAGAR\EQ—ERTH\SH10

DRG. No.

TB 4 210 509 005

REV. 01

SHEET No.  
10



### SECTION AA

#### NOTE

1. AUX. EARTH MAT SHALL BE SO POSITIONED THAT THE FOOT OF THE OPERATOR ALWAYS LIE OVER THE AUX. EARTH MAT AREA WHILE ATTENDING/OPERATING THE MECH. BOX.
2. ALL THE ROD CROSSING TO BE WELDED AS PER DRG. NO. TB-4-203-001.



## EQUIPMENT EARTHING DETAILS

### AUXILIARY EARTH MAT FOR ISOLATOR MAIN MECH., E/S MECH. BOX & CB (TYP.)

COMPU. DRG. REF.

Report No.

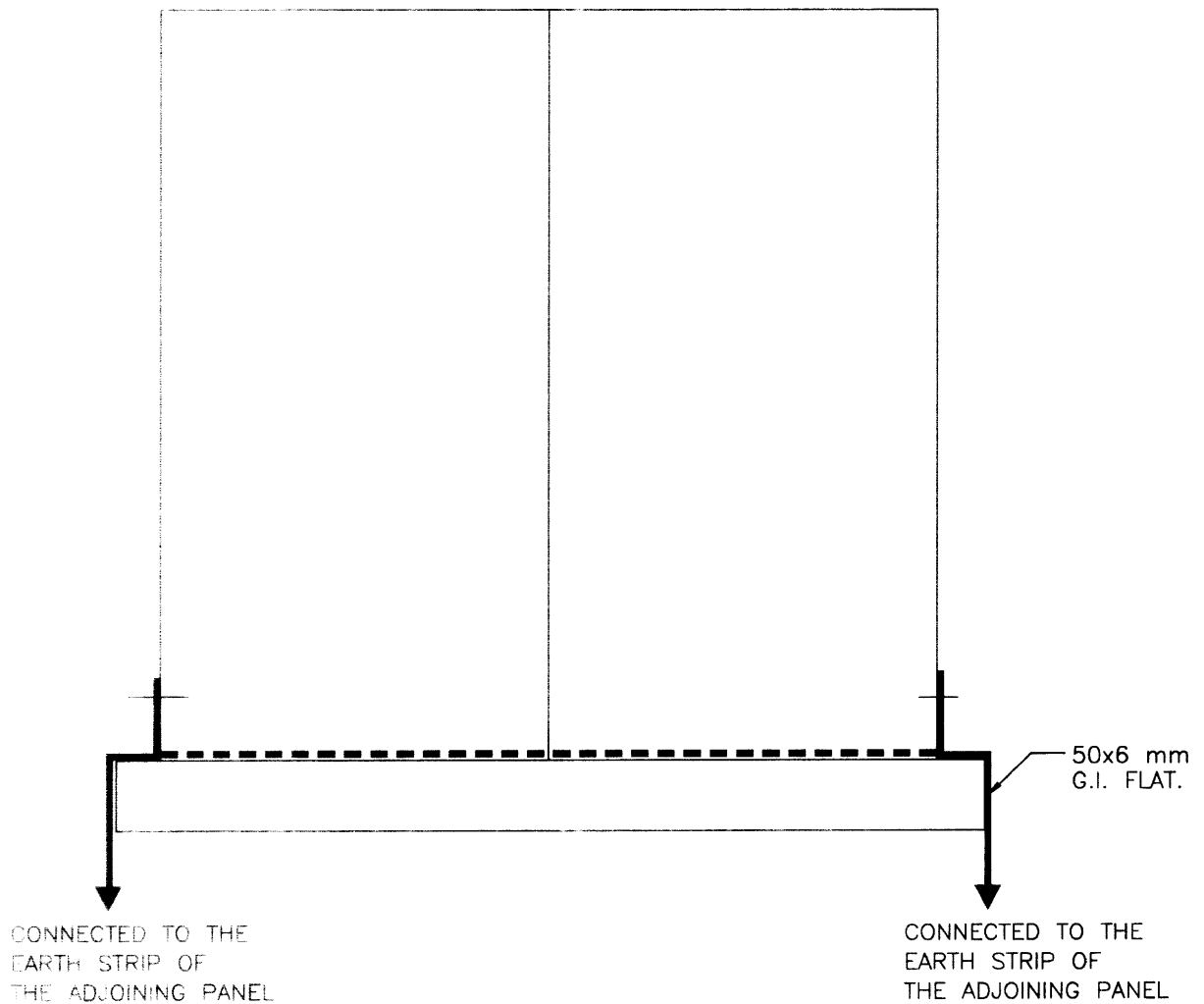
TB 4 210 509 005

REV. 01

SHEET No.

11

D/RAWAT, MURADNAGAR/EQ-EARTH/SH11



NOTE:

FLEXIBLE EARTHING CONDUCTOR BETWEEN DOOR  
& PANEL ARE SHOWN IN OGA DRAWINGS.



# EQUIPMENT EARTHING DETAILS PANELS EARTHING

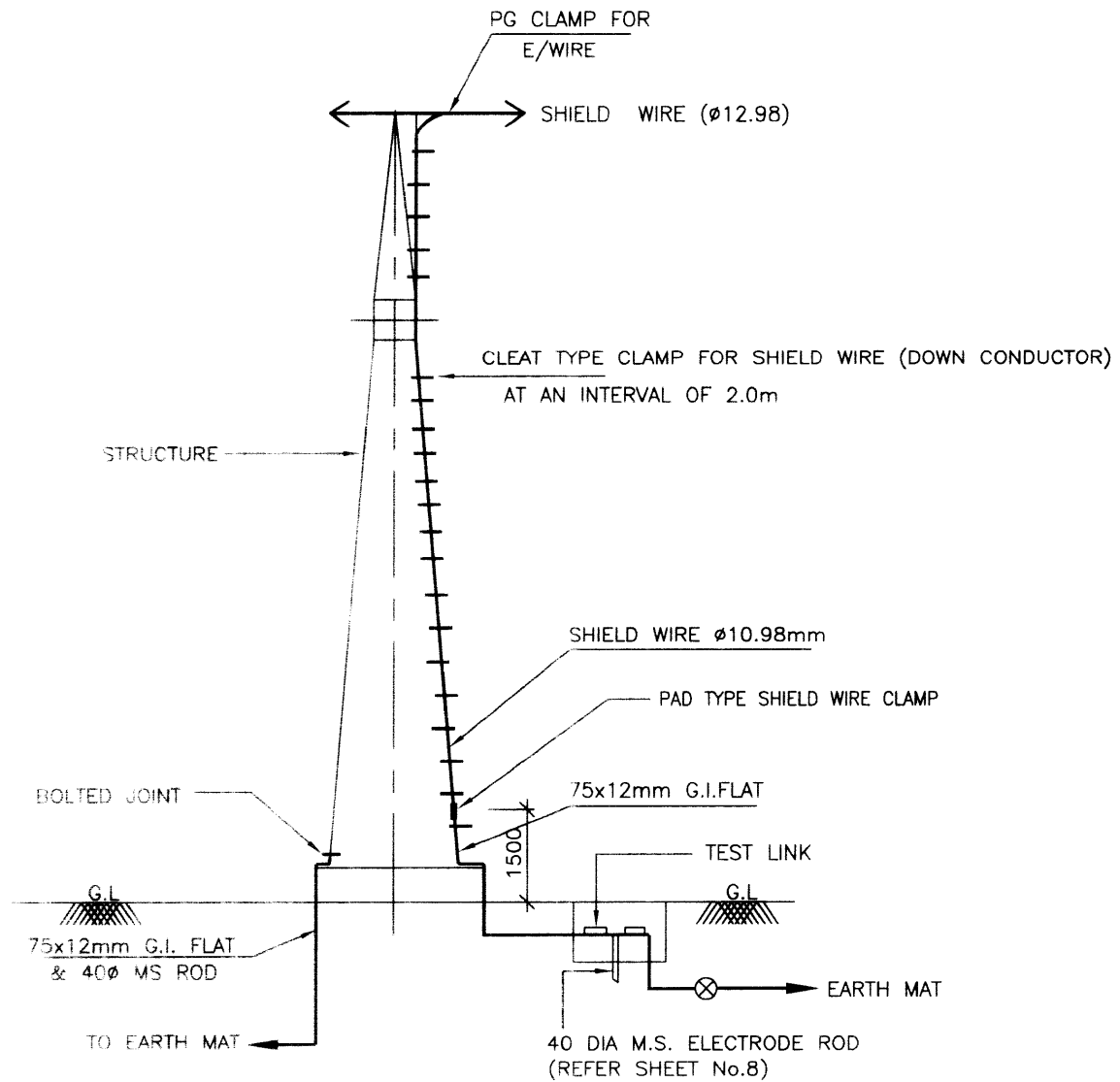
COMPU. DRG. REF.  
D:\RAWAT\MURADNAGAR\EQ-ERTH\SH12

Report No.

TB 4 210 509 005

REV. 00

SHEET No.  
12



**NOTE:-**

1) FOR RISER DETAIL REFER SHEET # 16.



## EQUIPMENT EARTHING DETAILS

### SHIELD WIRE TOWER EARTHING

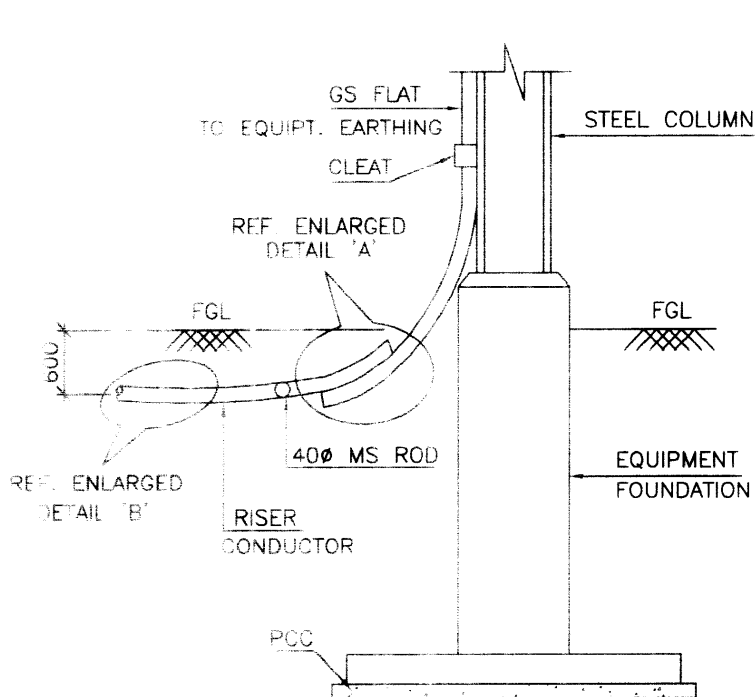
COMPU. DRG. REF.  
D:\RAWAT\MURADNAGAR\EQ-ERTH\SH13

Report No.

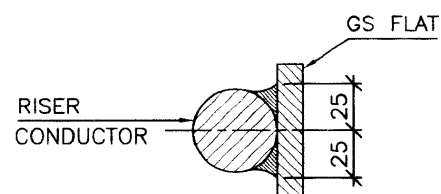
TB 4 210 509 005

REV. 01

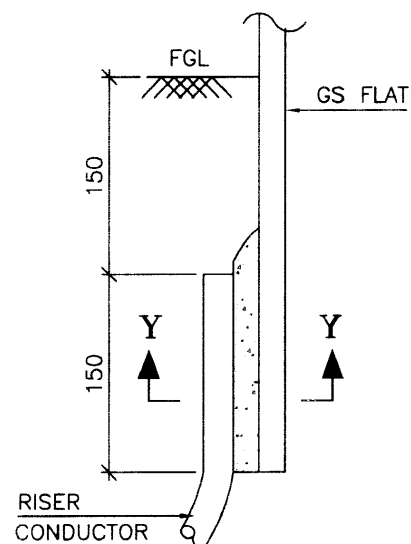
SHEET No.  
13



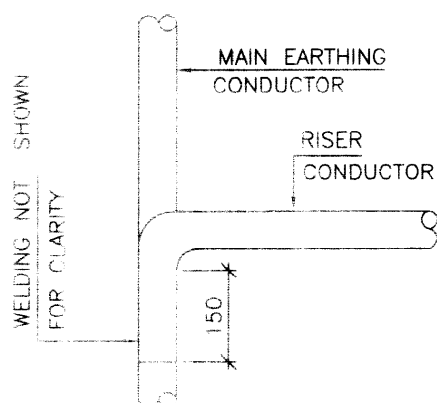
**TYPICAL DETAILS OF RISER**



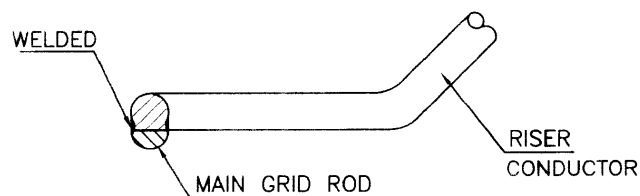
**SECTION Y-Y**



**DETAIL AT-A**



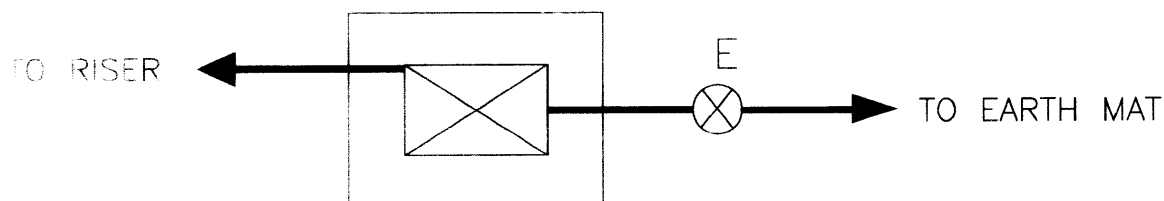
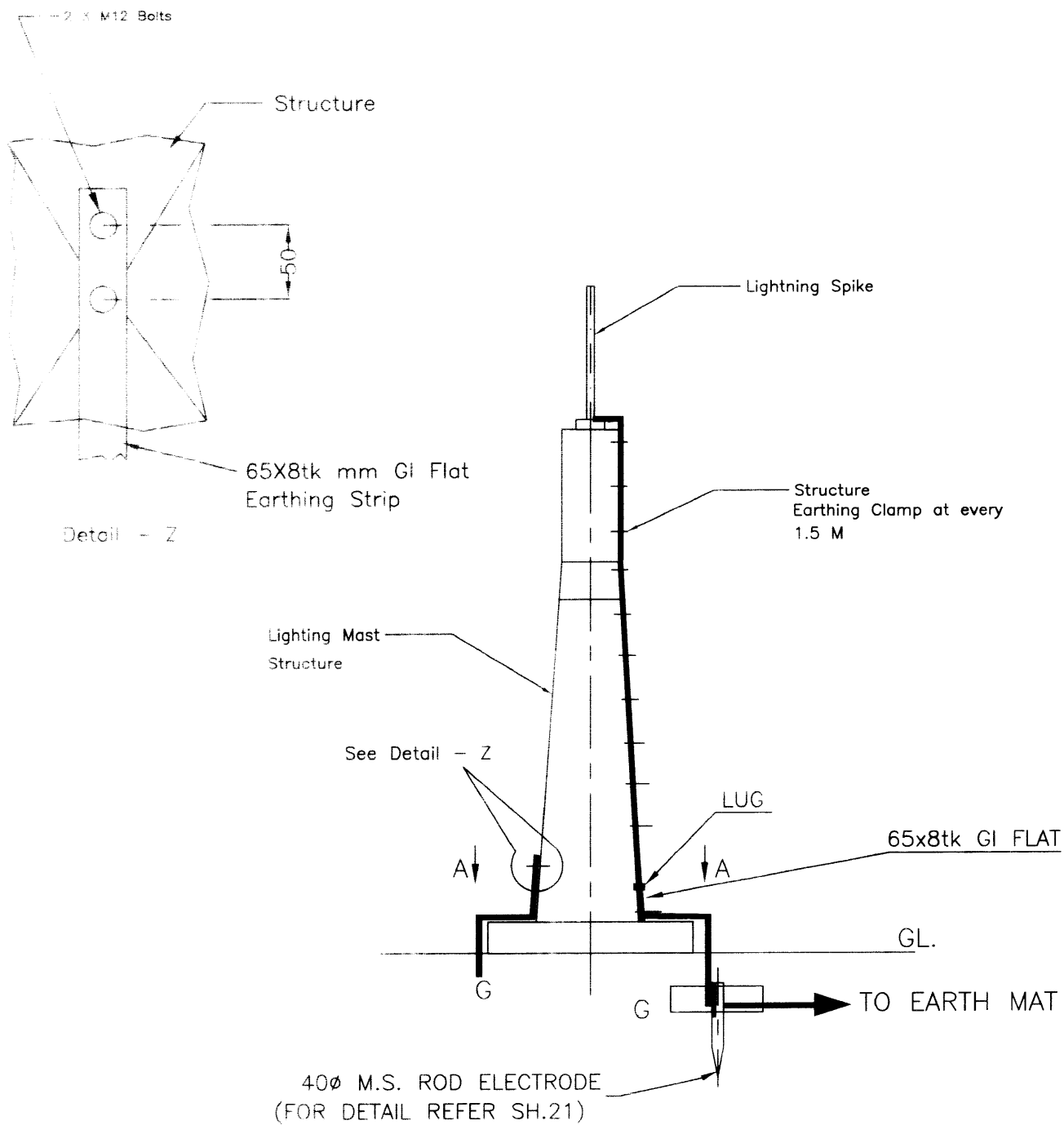
**PLAN**



**ELEVATION  
DETAIL-B**



## EQUIPMENT EARTHING DETAILS RISER DETAIL

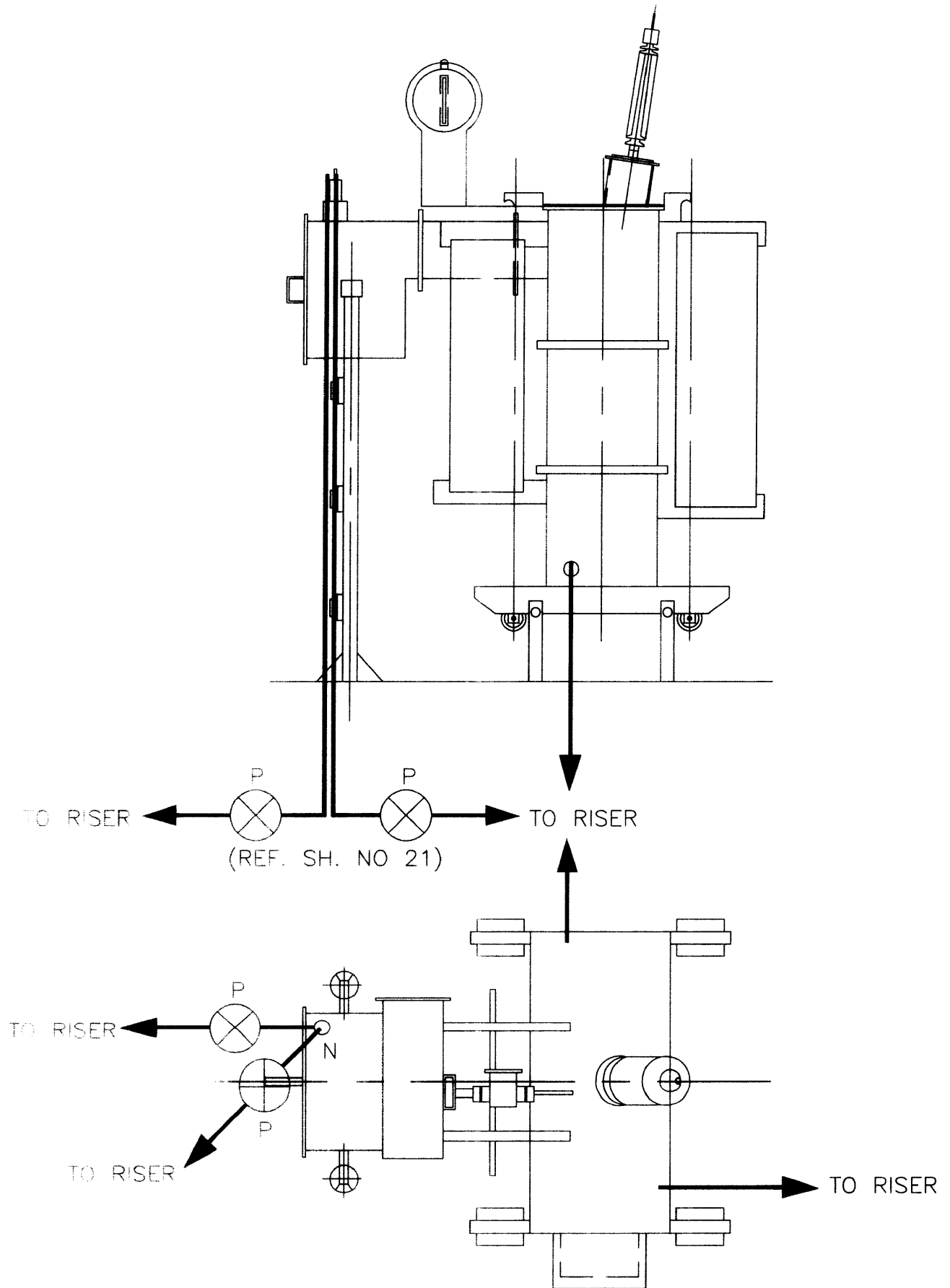


View A-A



# EQUIPMENT EARTHING DETAILS Lightning Mast





# EQUIPMENT EARTHING DETAILS 630KVA TRANSFORMER

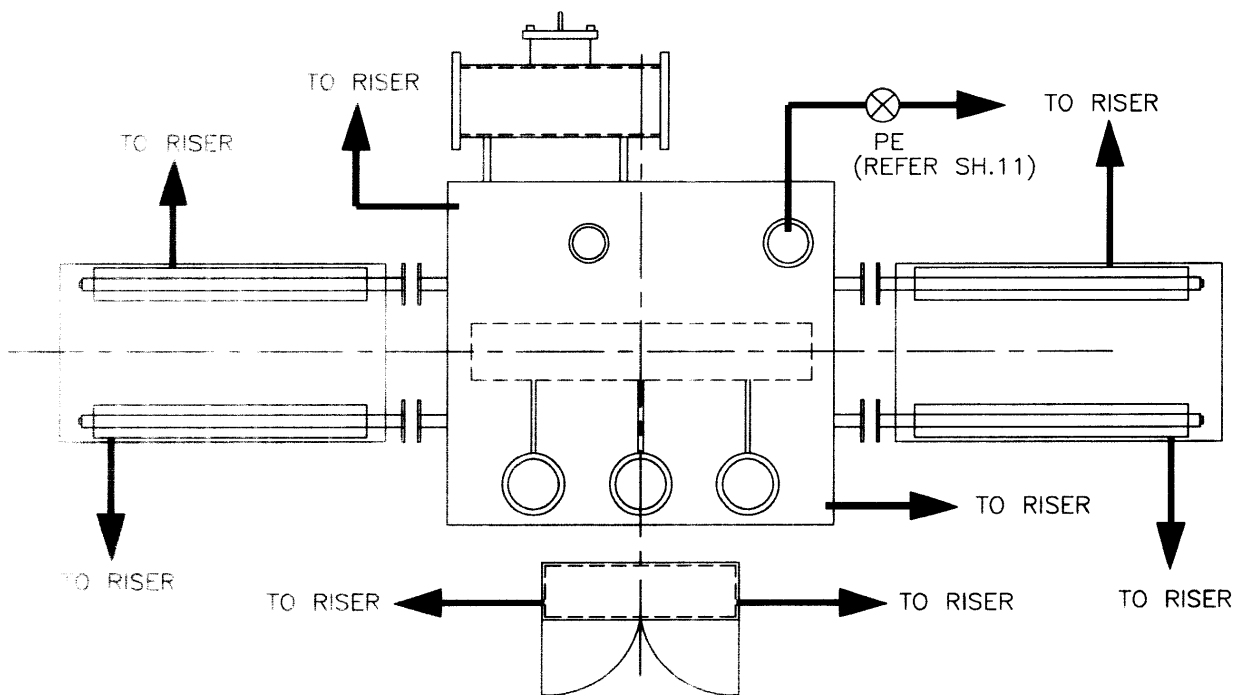
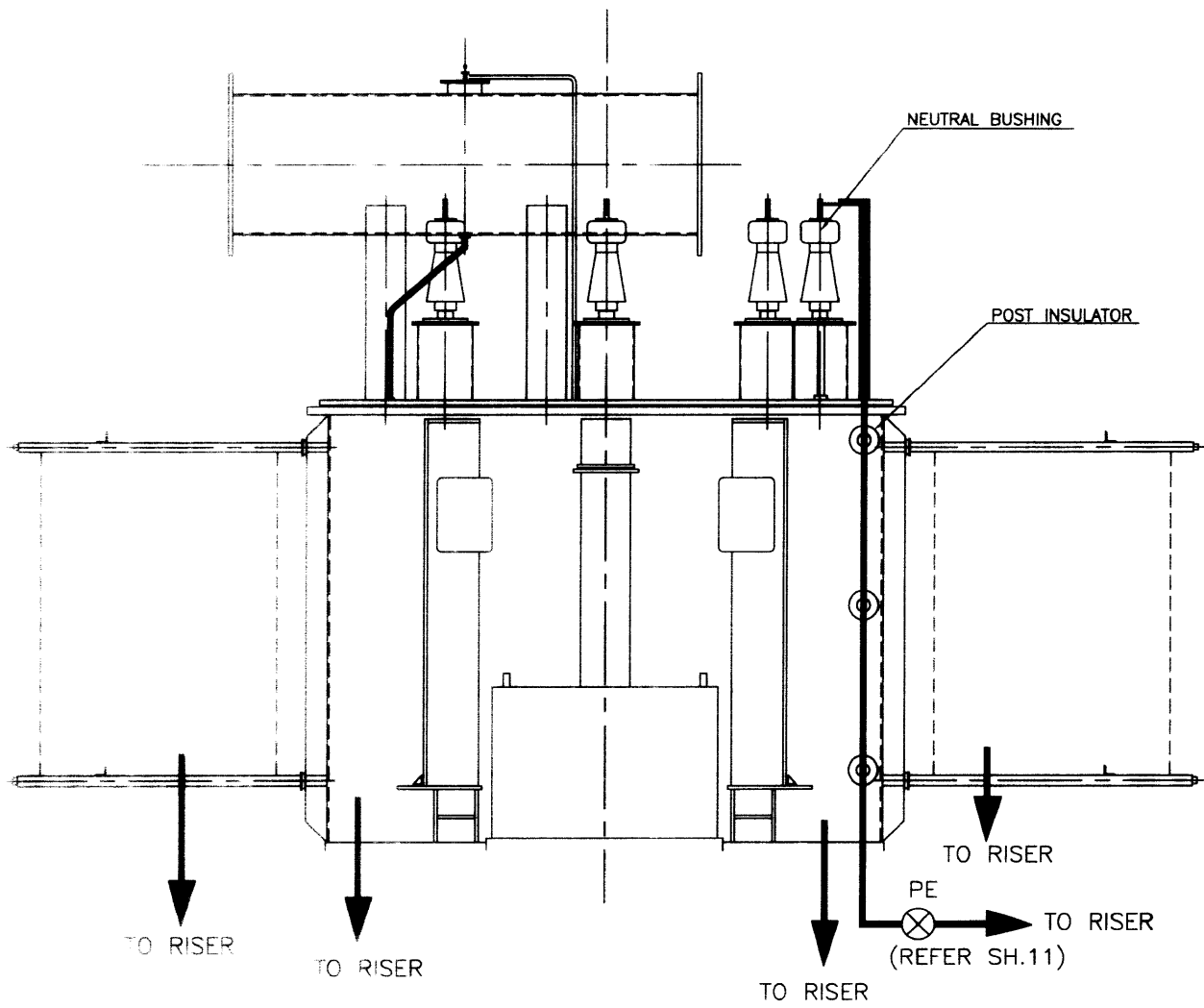
COMPU DRG REF

Report No.

TB 4 189 509 008

REV. 00

SHEET No.  
16



# EQUIPMENT EARTHING DETAILS REACTOR

COMPU DRG. REF.

Report No.

TB 4 189 509 008

REV. 01

SHEET No.

17



# ENGINEERING MANAGEMENT

TB-4-203-001

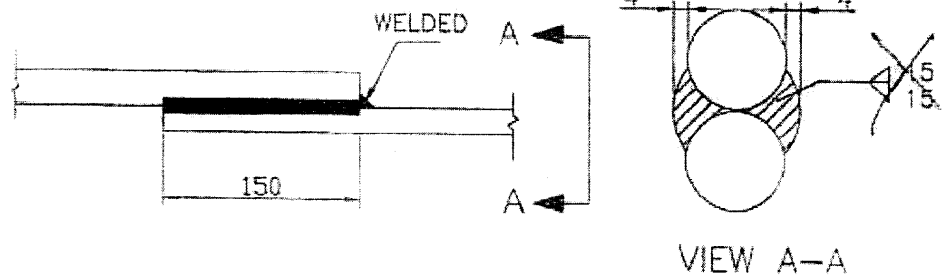
## PROCESS SPECIFICATION

REVISION: 01

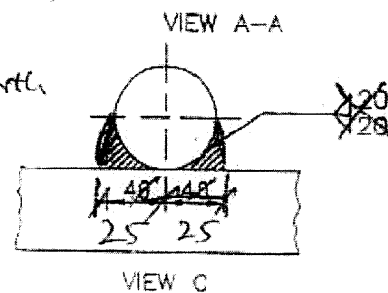
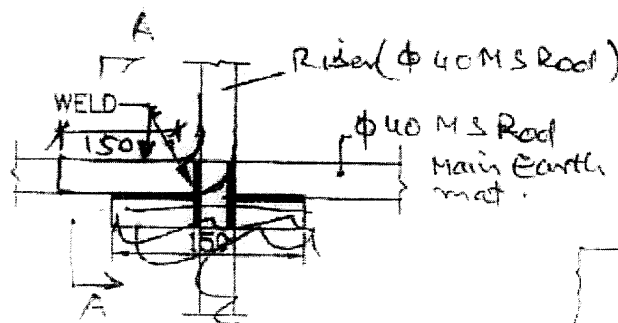
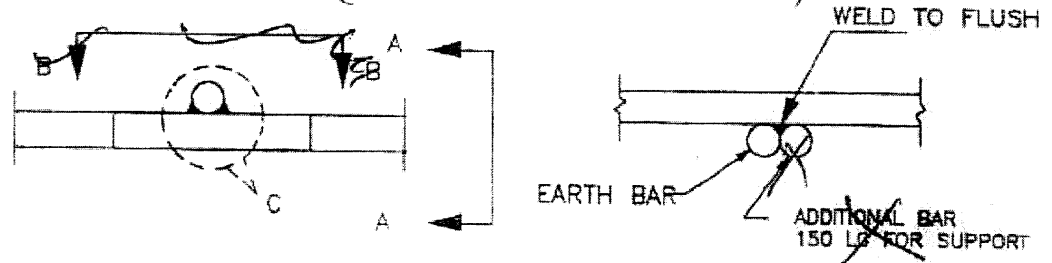
PAGE : 1 OF 2

### ROD TO ROD

#### 1. STRAIGHT LAP JOINT/RISER

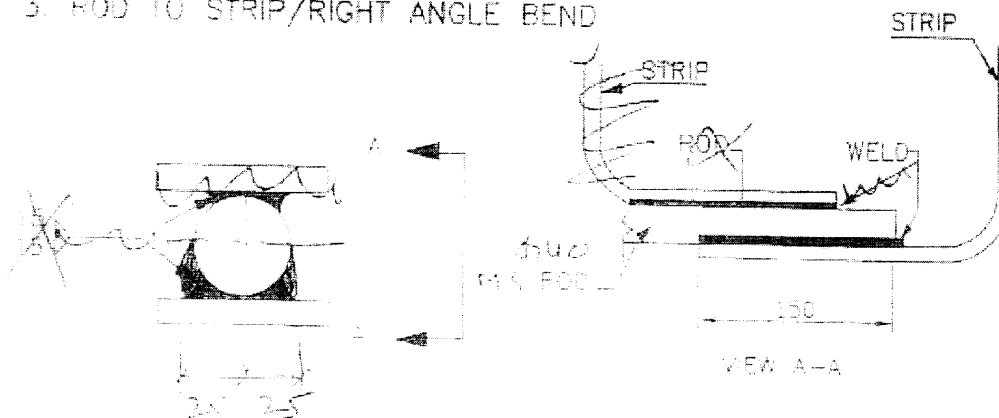


#### 2. RIGHT ANGLED JOINT (For Aux. Earth mat only)



Riser Connection to E/mat

#### 3. ROD TO STRIP/RIGHT ANGLE BEND



Copy 117



TRANSMISSION PROJECT  
DIVISION

## ENGINEERING MANAGEMENT

### PROCESS SPECIFICATION

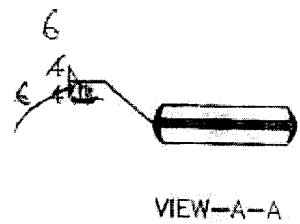
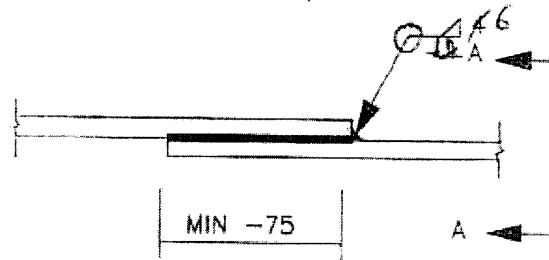
TB-4-203-001

REVISION: 01

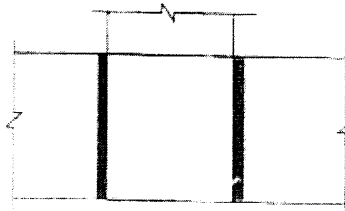
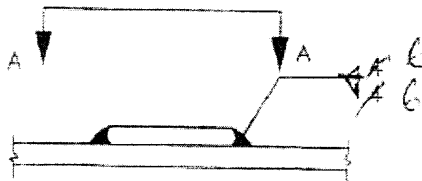
PAGE : 2 OF 2

### C. STRIP TO STRIP

#### 1. STRAIGHT LAP JOINT/RISER



#### 2. CROSS LAP JOINT

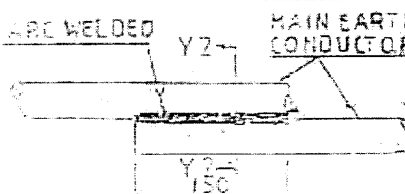
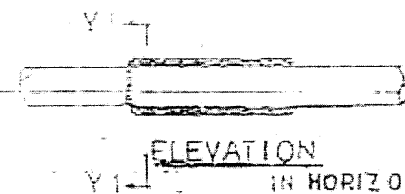
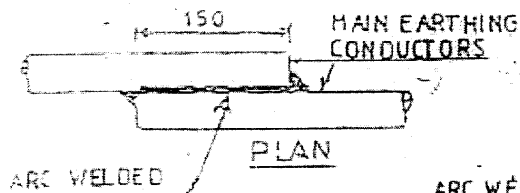
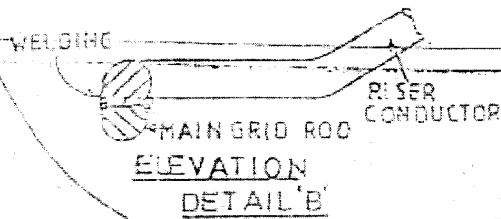
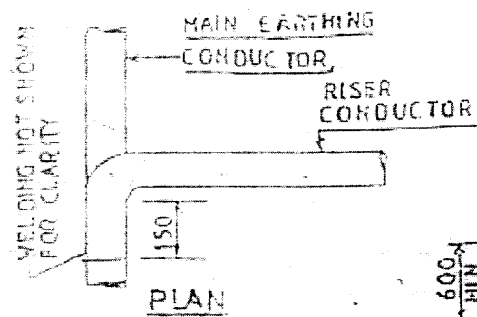


VIEW A-A

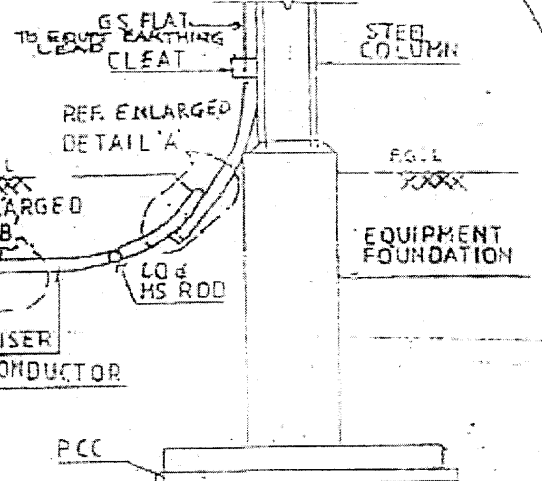
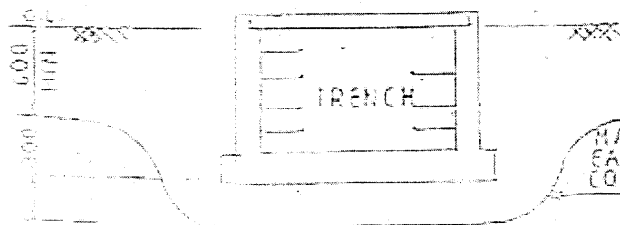
Note - No joint in 75x12 GS flat used for equipment  
Scaffolding

Amol  
1.17

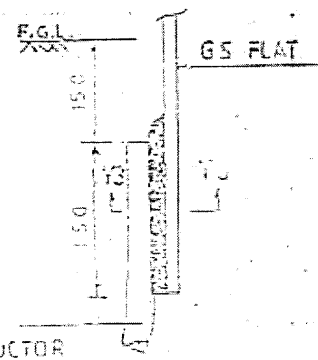
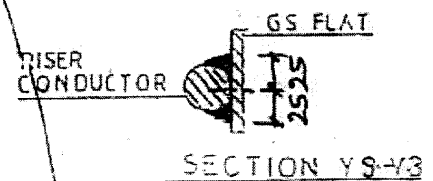
← Show riser details as per details given in this dep.



TYPICAL OVERLAPPING JOINT  
OF TWO CONDUCTORS



TYPICAL DETAILS OF RISER



DETAILS OF EARTHING CONDUCTOR  
CROSSING THE TRENCH

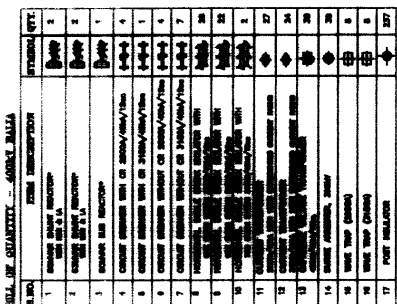
FOR TENDER PURPOSE ONLY

POWER GRID CORPORATION OF  
INDIA LTD.

DRAWING NO.  
C-ENG-STD-001

REV.  
1

STANDARD	FILE	DATE	DRAWN	CHECKED	APPD
EARTHING DETAILS		12/04			

[illegible]

**NOTES:**

1. \_\_\_\_\_ INDICATES SCOPE UNDER THE CONTRACT.
2. \_\_\_\_\_ INDICATES PAVING.
3. ALL DIMENSIONS ARE IN FEET UNLESS SPECIFIED OTHERWISE.
4. CONSTRUCTION METHODS
5. a) MAN AND HOIST - 8" PIPE ALUMINE
6. b) AIRLIFT METHOD CONSTRUCTION - 6" PIPE ALUMINE
7. c) JACK RAKE CONNECTION
8. d) RAIL, MOBILE & TRENCH CONNECTION.
9. ALL DIMENSIONS SHALL BE WITH LAMINATING SHEET AND SHALL BE SILE.
10. PLUMB LEVEL 3200mm ABOVE FFL
11. GRAVEL LEVEL 1700mm ABOVE FFL

