

 <p><b>BHEL</b> Maharatna Company SubContract and Purchase Department.</p>	<p><b>भारत भारी इलेक्ट्रिकल्स लिमिटेड</b> (A Govt. of India Undertaking) Power Sector-Northern Region, Plot no.25, Sector 16 A, Noida -201301 Ph : 0120-2416511/2416292 , Fax: 0120-2416528 / 2416525 E-mail: <a href="mailto:aditi@bhel.in">aditi@bhel.in</a> ; <a href="mailto:ick@bhel.in">ick@bhel.in</a></p>
---	---

<b>E-TENDER ENQUIRY NO. &amp; DATE</b>	<b>BHEL/PSNR/SCP/AG/E-3231 DATE: 05.02.2021</b>
<b>START DATE &amp; TIME OF TENDER SUBMISSION</b>	<b>06.02.2021 AT 11:00 HRS</b>
<b>DUE DATE &amp; TIME OF TENDER SUBMISSION</b>	<b>15.02.2021 AT 11:00 HRS</b>
<b>DUE DATE &amp; TIME OF OPENING OF TENDER</b>	<b>15.02.2021 AT 16:00 HRS</b>

### **TENDER ENQUIRY**

BHEL Power Sector, Northern Region invites sealed quotation on **Open Tender Basis** for the following items in **two part bid** system **THROUGH E-PROCUREMENT PORTAL** (<https://eprocurebhel.co.in/nicgep/app>) **ONLY**;

DESCRIPTION OF ITEMS	DESTINATION FOR SUPPLY	DELIVERY SCHEDULE
<b>SUPPLY OF BUSHINGS AND PUMP SHAFT FOR BHEL BAWANA SITE.</b>	<b>BHEL BAWANA SITE</b>	<b>DELIVERY OF MATERIAL SHALL BE COMPLETED WITHIN 24 WEEKS FROM THE DATE OF ISSUANCE OF P.O.</b>

### **DELIVERY REQUIRED AT - CONSIGNEE:**

BHEL - Bawana Site Office, Address: BHEL- PSNR, PRAGATI-III, CCPP, SECTOR-5, BAWANA INDUSTRIAL AREA, DELHI-110039.

### **IMPORTANT NOTE:**

*This is an E-tender floated online through our E-Procurement Site <https://eprocurebhel.co.in/nicgep/app>. The bidder should respond by submitting their offer online only in our e-Procurement platform at <https://eprocurebhel.co.in/nicgep/app>. Offers are invited in two-parts only. No Hard copy bid or bids through email/ fax shall be accepted.*

The Tender Document comprise of following;

<b><u>PART-I</u></b>	<b><u>PART-II</u></b>
<ol style="list-style-type: none"> <li>1. NIT : Page 1</li> <li>2. ITEM DESCRIPTION (ANNEXURE-A)</li> <li>3. PQR ( ANNEXURE-B)</li> <li>3. SPECIAL CONDITIONS OF CONTRACT</li> <li>4. UNPRICED FORMAT</li> <li>5. GENERAL CONDITIONS OF CONTRACT REV-03</li> </ol>	<b>BOQ E-3231</b>

**ANNEXURE – A****ITEM DESCRIPTION**

SL. NO.	ITEM DESCRIPTION	QUANTITY	TECHNICAL SPECIFICATIONS
1	BUSHINGS	06 SETS	As per PE-V0-314-552-A034 for Main pump - Model No. UP 150/53 (1 Set consisting of SLEEVE - 02 Nos. Part No.31000) (BBU no. S.01.06)
2	PUMP SHAFT	1 SET	As per PE-V0-314-552-A034 for Main pump-Model No. UP 150/53 (Part No. 18001) (BBU No. S.01.03)

**Note:** Technical Specifications PE-V0-314-552-A034 attached (Page 1 to 12)

[Redacted]	
Title	Data Sheet / GA Drg. & Performance curves for Main Pumps & Jockey Pumps
Project	Fire Detection & Protection System for 2 x 750 MW Pragati III, CCP

#### A. MAIN PUMPS

Sl. No.	Description	Main Pumps
1.0	Manufacturer	Kirloskar Brothers Limited
2.0	Model No. & Qty.	UP 150/53, Motor Driven Pump - 03nos. & Engine Driven Pump - 02nos.
3.0	Type of Pump	Horz. Split Case
4.0	Number of stages	1
4.1	Liquid Handled	Water
4.2	Specific Gravity / Temperature	1
5.0	Capacity (M <sup>3</sup> / Hr.)	410
6.0	At rated duty point	410
7.0	Min. Capacity at which pump can run continuously	140
8.0	Mx. Capacity at which pump can operate continuously	610
9.0	Total head in MWC	88
10.0	At rated capacity (indicated against 6.0)	88
11.0	At max. capacity (indicated against 8.0)	68
12.0	at 150% of rated capacity	68
13.0	Shut off head, MWC	94
14.0	Efficiency at rated duty point (-2.5% Tol.)	78
15.0	At max. capacity (indicare against 8.0)	70
16.0	at 15% of rated capacity	70
17.0	NPSH required (Mtrs.)	4.4
18.0	At rated duty point (as per point 8.0 & 10.0)	4.4
19.0	At max. capacity conditions (as per point 8.0, 11.0)	4.4
20.0	at 150% of rated capacity	4.4
21.0	Power consumed by pump in KW at the following condition	
21.1	at rated duty point	125.97
21.2	At shutt off condition (approximate)	82
21.3	At run out condition	160
21.4	Mx. Power consumption throughout the entire range of operation	160
21.5	At 150% of rated capacity	160
21.6	Speed RPM (Nominal)	& 1500RPM - Motor Driven Pump & 1450RPM - Engine Driven Pump
21.7	Specific Speed (in metric units)	60.79
22.0	Material of Construction	
22.1	Casing	CI to IS: 210 Gr. FG 260

Client	BHEL Doc. No.:	--	Rev.	Date of Submission	Sheet No.
BHEL	PE-VO-314-552-A034	--	01	06.01.10	Page 2 of 6



[Redacted]	
Title	Data Sheet / GA Drg. & Performance curves for Main Pumps & Jockey Pumps
Project	Fire Detection & Protection System for 2 x 750 MW Pragati III, CCP

		with 2.5 Ni
22.2	Shaft	IS 1570, Gr. 40C8
22.3	Shaft Sleeve	SS 410
22.4	Impeller	Bronze to IS:318, LBT2
22.5	Stuffing box packing	Champion - 3116 or EQ
22.6	Bare Shaft	IS-1570, Gr. 40 C8
22.7	Foundation bolts	MS
22.8	Coupling Guard	MS Fab.
22.9	Pump Bearing	Bearing Steel
a.	Type	Antifriction
b.	Nos.	2
c.	Location	DE + NDE
23.00	Shaft Sealing arrangement	Gland Packing
24.00	Details of pump lubrication	Self Water
25.00	Coupling Type	Love joy SW/295 - Motor Driven Pump & Hole Set Type - Engine Driven Pump
26.00	Coupling Guard provided	Yes
27.00	Base plates, Lifting lugs and eye bolts, foundation bolts supplied.	Yes
28.00	Code followed for water pumps	IS 1520
29.00	Pumps approved by TAC	Conforming to TAC
30.00	Weight of pump	588
31.00	Weight of accessories	253
32.00	Size of pump Suction/Delivery mm	~ 200 / 150
33.00	Flange drilling standard	BS 4504 PIN16FF
34.00	Direction of rotation viewed from prime mover's position	CW
35.00	Impeller dia in mm	
36.00	Rated (Approx)	510
a.	Minimum	450
b.	Maximum	530
c.	Inspection	AS per Approved QAP
38.00	Following documents from part of this data Sheet	
39.00	Noise level	85dBA for Motor Driven & 105dBA for engine driven at 1.5mtrs distance
40.00	Vibration Level	100Micron
a.	Performance Curve	HA17400051-0
b.	GA Drawing	TF 174093119-1 - Motor Driven Pump & TF 17409322-0 - Engine Driven Pump
c.	CS Drawing	TC 17409265-1 - Motor

Client	BHEL Doc. No.:	--	Rev.	Date of Submission	Sheet No.
BHEL	PE-VO-314-552-A034	--	01	06.01.10	Page 3 of 6

Title	Data Sheet / GA Drg. & Performance curves for Main Pumps & Jockey Pumps
Project	<b>Fire Detection &amp; Protection System for 2 x 750 MW Pragati III, CCP</b>
	Driven Pump & TC 17409266-0 - Engine Driven Pump

Client	BHEL Doc. No.:	--	Rev.	Date of Submission	Sheet No.
BHEL	PE-VO-314-552-A034	--	01	06.01.10	Page 4 of 6



Title	Data Sheet / GA Drg. & Performance curves for Main Pumps & Jockey Pumps
Project	Fire Detection & Protection System for 2 x 750 MW Pragati III, CCP

## B. JOCKEY PUMPS

Sl. No.	Description	Jockey Pumps
1.0	Manufacturer	Kirloskar Brothers Limited
2.0	Model No. & Qty.	CPHM 40/26, 2 Nos.
3.0	Type of Pump	Horz. Back Pull Out
4.0	Number of stages	1
4.1	Liquid Handled	Water
4.2	Specific Gravity / Temperature	1
5.0	Capacity (M <sup>3</sup> / Hr.)	25
6.0	At rated duty point	25
7.0	Min. Capacity at which pump can run continuously	7
8.0	Mx. Capacity at which pump can operate continuously	32
9.0	Total head in MWC	90
10.0	At rated capacity (indicated against 6.0)	90
11.0	At max. capacity (indicated against 8.0)	80
12.0	at 150% of rated capacity	-
13.0	Shut off head, MWC	95
14.0	Efficiency at rated duty point (-2.5% Tol.)	43
15.0	At max. capacity (indicare against 8.0)	45
16.0	at 15% of rated capacity	-
17.0	NPSH required (Mtrs.)	1.8
18.0	At rated duty point (as per point 8.0 & 10.0)	1.8
19.0	At max. capacity conditions (as per point 8.0, 11.0)	1.8
20.0	at 150% of rated capacity	1.8
21.0	Power consumed by pump in KW at the following condition	
21.1	at rated duty point	7.34
21.2	At shutt off condition (approximate)	10
21.3	At run out condition	18
21.4	Mx. Power consumption throughout the entire range of operation	18
21.5	Speed RPM (Nominal)	2900
21.6	Specific Speed (in metric units)	28.98
22.0	Material of Construction	
22.1	Casing	CI to IS: 210 Gr. FG 260 2.5 Ni
22.2	Shaft	IS 1570, Gr. 40C8
22.3	Shaft Sleeve	SS 410
22.4	Impeller	Bronze to IS:318, LBT2
22.5	Stuffing box packing	Champion - 3116 or EQ
22.6	Bare Shaft	IS 1570, Gr. 40 C8

Client	BHEL Doc. No.:	--	Rev.	Date of Submission	Sheet No.
BHEL	PE-VO-314-552-A034	--	01	06.01.10	Page 5 of 6



Title	Data Sheet / GA Drg. & Performance curves for Main Pumps & Jockey Pumps
Project	<b>Fire Detection &amp; Protection System for 2 x 750 MW Pragati III, CCP</b>

22.7	Foundation bolts	MS
22.8	Coupling Guard	MS Fab.
22.9	Pump Bearing	Bearing Steel
a.	Type	Antifriction
b.	Nos.	2
c.	Location	DE + NDE
23.00	Shaft Sealing arrangement	Gland Packing
24.00	Details of pump lubrication	Self Water
25.00	Coupling Type	Love joy RRL 150
26.00	Coupling Guard provided	Yes
27.00	Base plates, Lifting lugs and eye bolts, foundation bolts supplied.	Yes
29.00	Code followed for water pumps	IS 1520
31.00	Weight of pump	76
32.00	Weight of accessories	46
33.00	Size of pump Suction/Delivery mm	65 / 40
34.00	Flange drilling standard	DIN ND-16 FF
35.00	Direction of rotation viewed from prime mover's position	CW
37.00	Rated (Approx)	255
a.	Minimum	205
b.	Maximum	264
c.	Inspection	AS per Approved QAP
38.00	Following documents from part of this data Sheet	
a.	Performance Curve	HD 17846KA0
b.	GA Drawing	TF 17809139-0
c.	CS Drawing	TC 17809132-0
39.00	Noise level	85dBA at 1.5Mtrs distance
40.00	Vibration Level	100 Micron

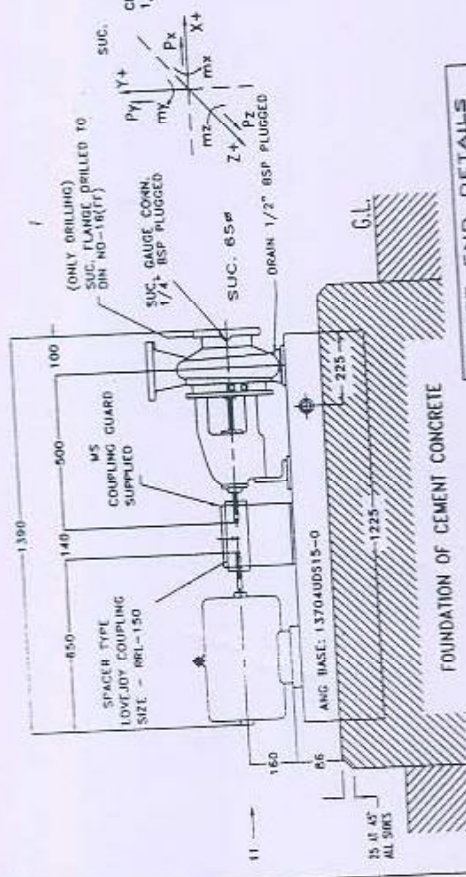
Client	BHEL Doc. No.:	--	Rev.	Date of Submission	Sheet No.
BHEL	PE-VO-314-552-A034	--	01	06.01.10	Page 6 of 6



THIS DRAWING IS THE PROPERTY OF KIRLOSKAR BROTHERS LTD. AND MUST NOT BE USED OR COPIED WITHOUT THEIR AUTHORITY IN WRITING.

DO NOT SCALE THE DRAWING

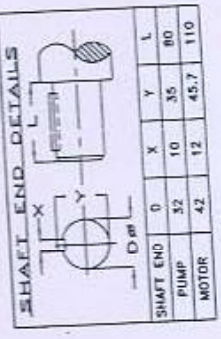
PUMP QD<sup>2</sup> VALUE IN  $\text{kgm}^2 = 0.107$   
 STATIC LOAD IN  $\text{kg} = 281$   
 DYNAMIC LOAD IN  $\text{kg} = 351.25$



ELEVATION

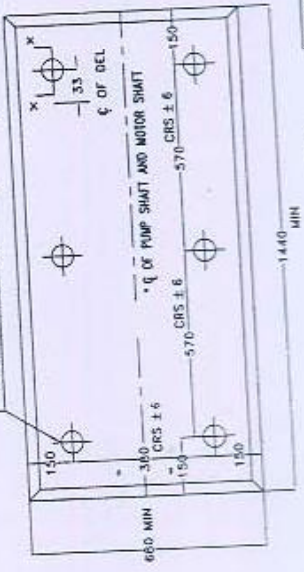
THE CIVIL ENGR. DETAILS SHOWN IN THIS DRAWING ARE TENTATIVE AND THOSE SHOULD BE DESIGNED AND FINALISED AT CUSTOMER'S END PLEASE NOTE.

6. FOUNDATION POCKETS MAKE FOUNDATION KEEPING 100 mm DIA. pocket.



PUMP DUTIES

CAPACITY IN  $\text{M}^3/\text{hr} = 25$   
 TOTAL HEAD IN METERS = 90  
 NPSH REQUIRED IN METERS = 1.8  
 EFFICIENCY = 45%-25%

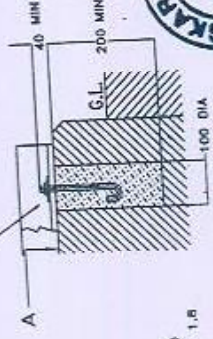


PLAN OF FOUNDATION ONLY

ALLOWABLE FORCES(kg)		ALLOWABLE MOMENTS(kgm)		RTY. ZONE		RE
Px	Py	Pz	My	Mx	Mz	
100	130	85	70	40	35	

END VIEW FROM ARROW - II (ONLY FOR PUMP)

6 FOUNDATION BOLTS M12X150 LONG SUPPLIED



DETAIL OF FOUNDATION POCKET (VIEW AT X-X)

NOTE : GROUT BASE PLATE UP TO LEVEL A.  
 NOTE : ALL DIMENSIONS ARE IN mm EXCEPT SPECIFIED.

PUMP	CPHM 40/26	PUMP BARE SHAFT	076 kg
MOTOR	CGL N0160L	MOTOR BARE SHAFT	150 kg
KW	18.5	BASE AND GUARD	037 kg
R.P.M.	2900(NOM)	COUPLING PAIR WITH BOLTS	007 kg
		TOTAL WEIGHT OF SET	281 kg
		(Approx)	
O/A NO.	F08310A506	DATE	10/07/09
ITEM NO.	0700	PO NO.	P-269/100/74
INDENTOR'S REF.		DATE	

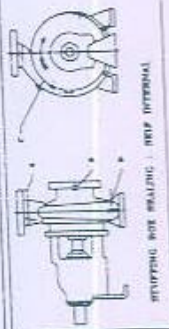


KIRLOSKAR BROTHERS LIMITED  
 KIRLOSKARVADI 416308 DIST. SANGLI(MH)

FOUNDATION PLAN DRAWING	
DRN.	CAD 30/07/09
CHD.	SNN 30/07/09
SIGN/ DATE	SMB 30/07/09
DRG. NO.	TF17809139

Tockey Pump





STUFFING BOX SEALING - DRIP INTERNAL

MATERIAL DESCRIPTION

PART NO.	QTY	PART DESCRIPTION	MATERIAL DESCRIPTION
106	01	PUMP CASING	CI IS-210 GR FG 200
*161	01	ENCLOSED IMPELLER	BR IS-316 GR LTR2
*160.1	01	PUMP SHAFT	CS IS-1570 GR 40 C8
*160	01	CASING RING SUC.	CI IS-210 GR FG 200
*192	01	IMPELLER RING SUC.	BR IS-316 GR LTR2
220	01	CASING COVER	CI IS-210 GR FG 200
*227	01	SPLIT LANTERN RING	CI IS-210 GR FG 200
229	01	SPLIT GLAND	RUBBER
236	01	LIQUID DEFLECTOR	ST ST ASTM A276 TYPE 410
*311	01	SHAFT SLEEVE	CS IS-1070 GR 40 C8
*320	01	KEY FOR IMPELLER	ST ST ASTM A276 TYPE 410
330	01	IMPELLER NUT	CI IS 210 GR FG 200
*350	01	STUFFING BOX BUSH	CI IS 210 GR FG 200
240	01	BEARING HOUSING	MS IS 1070 GR ST 34
251	01	SUPPORT FOOT	STEEL
*263	01	DOUBLE ROW ANG. CONTACT BALL BEARINGS SKF 3307 OR EQ.	STEEL
*284	01	CYLINDRICAL ROLLER BEARING SKF NUS97 OR EQ.	STEEL
270	01	BEARING COVER D.S.	CI IS 210 GR FG 200
271	01	BEARING COVER P.S.	CI IS 210 GR FG 200
321	01	KEY FOR COUPLING	CS IS 1070 GR 40 C8
336	01	LOCK NUT	IS 1307 CL-8
*430	01	GLAND PACKING	CHAMPION 3116 OR EQ.
441	02	GREASE NIPPLE	IS 1307 CLA CUP
*470	01	HELICOL INSERT	ST-STEEL
502	02	FELT RING	FELT
*611	01	GASKET FOR CASING COVER	NON ASBESTOS FERROLITE NAME
*614	02	GASKET - BRG COVER D.S.	NON ASBESTOS FERROLITE NAME
*615	01	GASKET - SLEEVE & IMP.	NON ASBESTOS FERROLITE NAME
*682	01	GASKET FOR IMP. NUT	NON ASBESTOS FERROLITE NAME
*415	01	LOCK WASHER FOR BEARING NUT	CS IS 1570-10 C4
485	02	INTERNAL CIRCLIP	SPRING STEEL

\* RECOMMENDED STAGES HARDENED TO 250 - 280 HRN MIN. HARDENED TO 250 - 280 HRN MIN. HARDENED TO 250 HRN MIN. APPLICABLE IF MARKED

THIS DRAWING IS THE PROPERTY OF KIRLOSKAR BROTHERS LTD. AND MUST NOT BE USED OR COPIED WITHOUT THEIR AUTHORITY IN WRITING.

FLANGE FACE DETAILS



PLAIN

DESCRIPTION

- C - CIRCULATION LINE CONN.
- D - CASING DRAIN
- A - PRESSURE GAUGE CONNECTION 1/4"
- B - SUC GAUGE/VACUUM EQUALISING CONNECTION 1/4"

RSP

1/4"  
1/2"



CROSS SECTIONAL DRAWING OF PUMP CPHM 40/26  
INDENTOR: UNITECH MACHINS LIMITED. P.O.NO.: P-269/100/747

O/A NO.: F08310A506 DATE: 30/07/08  
IT NO.: 0700 QTY: 02

SERVICE: WATER

PROJECT: :

CONSULTANT:

KIRLOSKAR BRO  
KIRLOSKARWADI

EQUIP. NO.:

DWG. NO.


TC-17600132-0

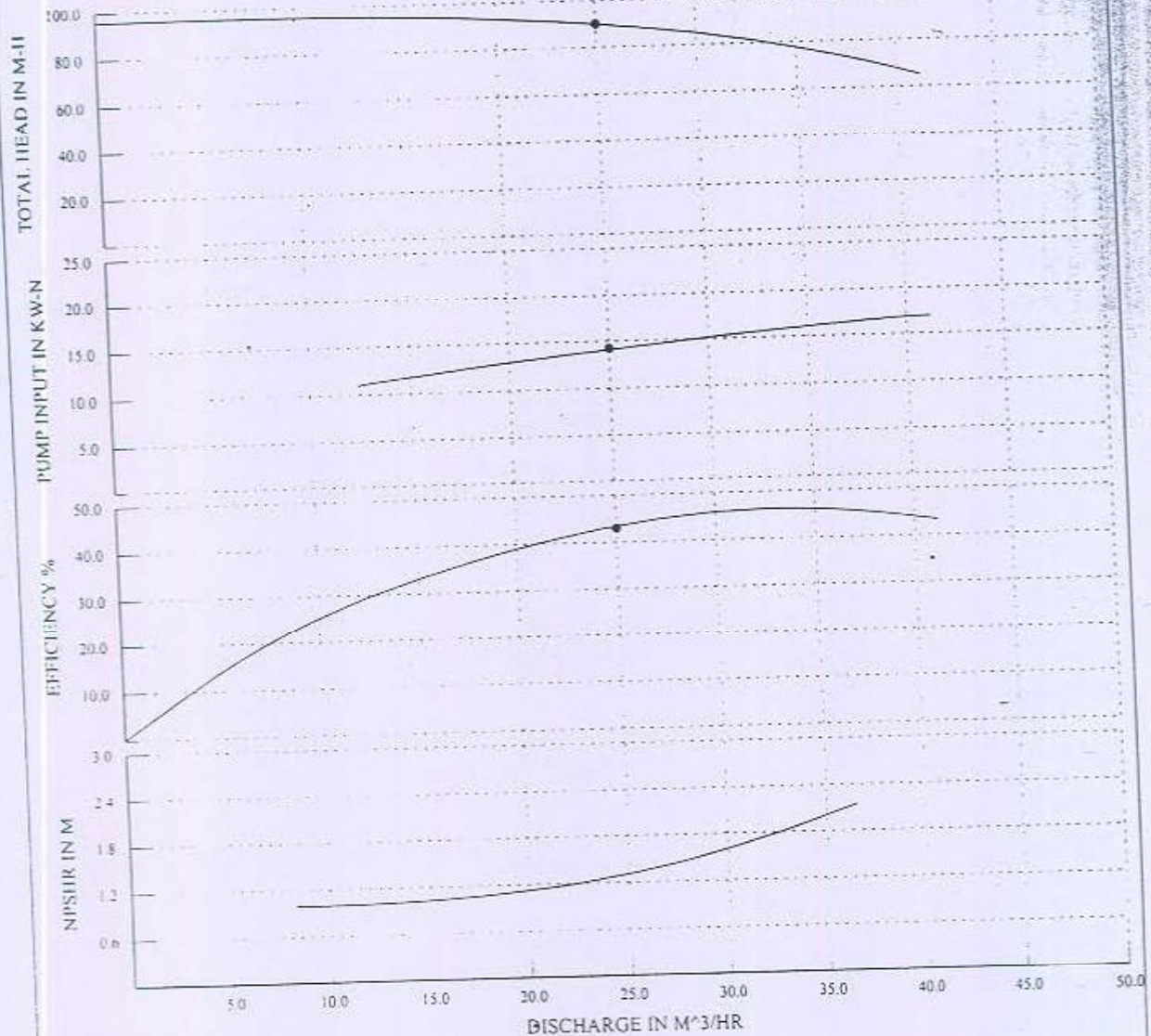
SANGLI. (INDIA)

*Joekey Pump*



# Jockey Pump

KIRLOSKAR BROTHERS LTD. KIRLOSKARWADI (INDIA)	STD REF CURVE NO - HD17846KAO	 Enriching Lives
PERFORMANCE CURVE OF PUMP TYPE CPHM 40.26	SUC. 65 mm. DEL. 40 mm	
THIS CURVE RELATES THE LIQUID OF S.G. 1 AND VISCOSITY AS - WATER	OA No. F08310A506	



CLIENT	BHEL	● GUARANTEED DUTY POINT (AS PER STD IS-9137)	
PROJECT	Pragati Power Corporation	TOTAL HEAD H	90 m
CUSTOMER	Unitech Machine Ltd.	DISCHARGE Q	25 m³/hr
SERVICE		PUMP INPUT N	14.25 kW
IMPELLER DIA	262 mm	EFFICIENCY	43 %
NPSH CURVE AT MINIMUM DIAMETER 265 mm AND STANDARD RPM 2900		Reqd NPSH (inclusive of 3m for field appl)	1.8 m
		SHUTOFF POWER	7.34 kW
		RECOMMENDED PRIME MOVER	18.5 kW
		MAX. LOAD SPEED	2900

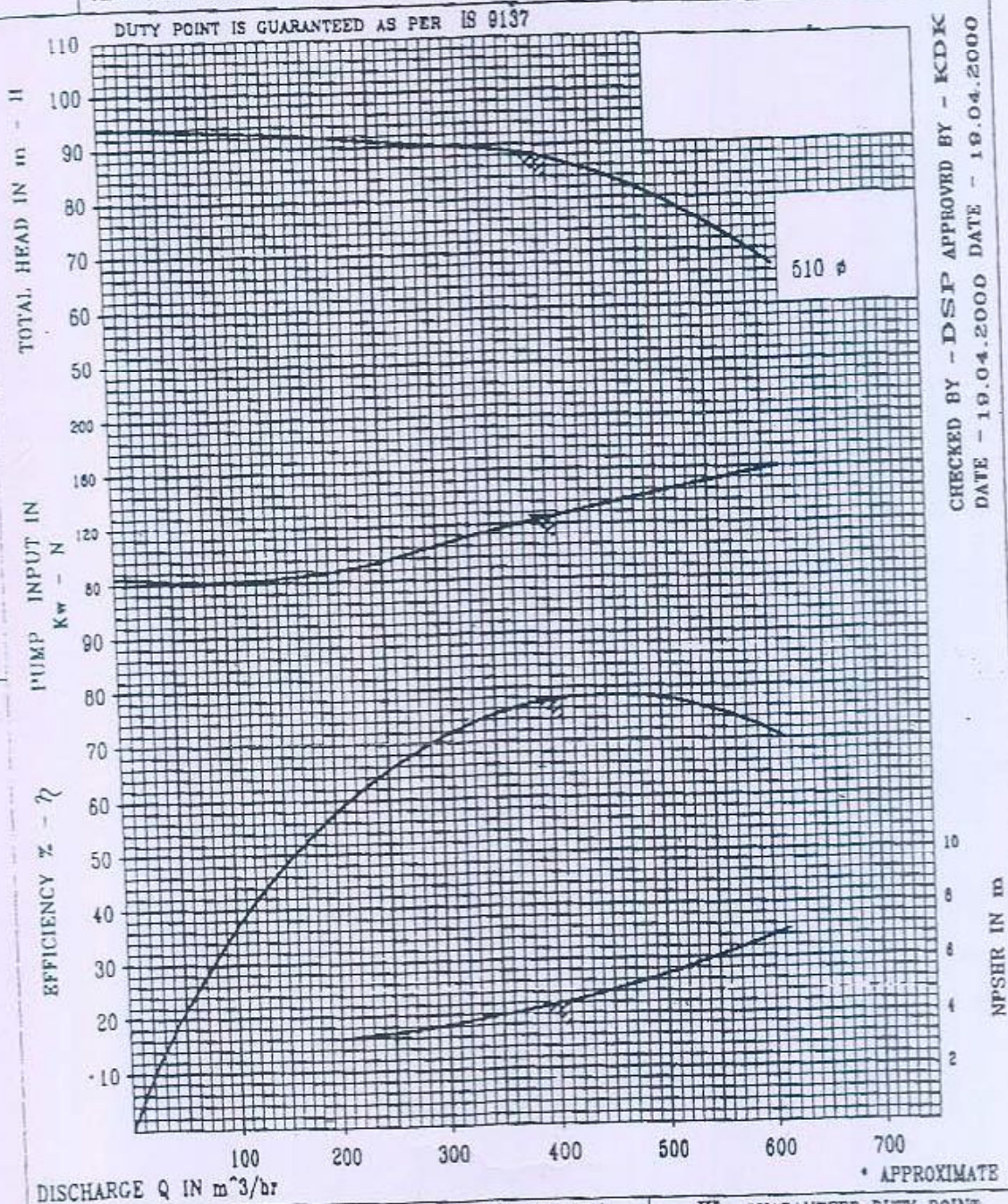








KIRLOSKAR BROTHERS LTD. KIRLOSKARWADI (INDIA)	NO. HA17400051-0
PERFORMANCE * CURVE OF PUMP UP 150/53	SUC. 200 mm DEL. 150 mm
This curve relates to the liquid of S.G. 1.000 viscosity AS WATER	OA No. FO8310A5D6



CHECKED BY - DSP APPROVED BY - KDK  
DATE - 19.04.2000 DATE - 19.04.2000

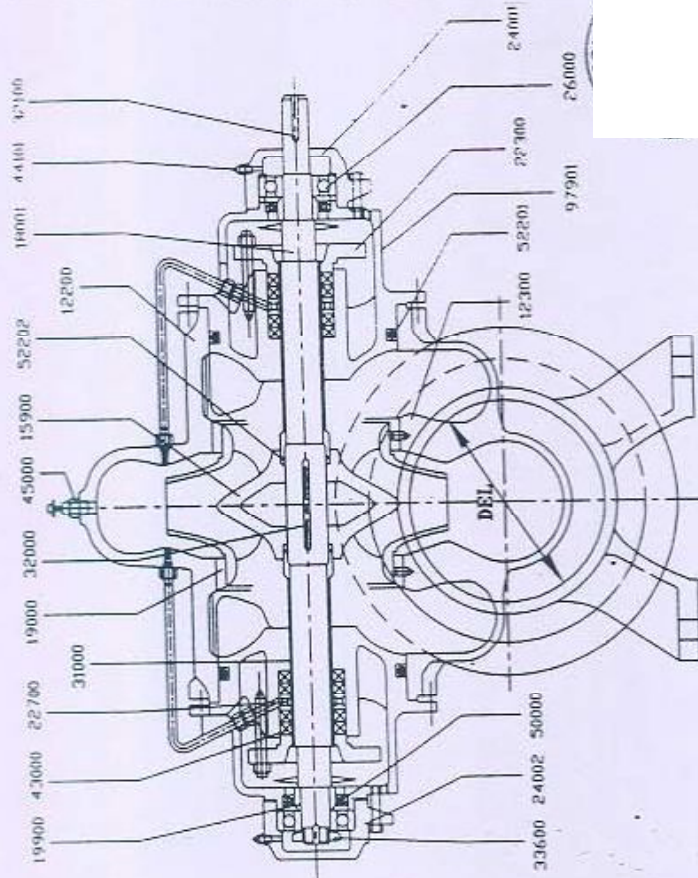
PROJECT		Pragati Power Corporation	GUARANTEED DUTY POINT	
SERVICE		FIRE FIGHTING Hydrant, Motor Driven	TOTAL HEAD H	88.00 m
CONSULTANT / INDENTOR			DISCHARGE Q	410.00 $m^3/hr$
O/A NO./ITEM NO. - TENDER/0.00 dt./ /			PUMP INPUT N	125.97 kW
IMPELLER MAT./DIA. - BRONZE/510 mm.			PUMP EFFL. $\eta$	78.00 %
			REQD. NPSH	4.40 m
			MIN. SUBMERGENCE	0.00 mm
			RECOMENDED PRIME MOVER	
			FULL LOAD SPEED	1500 rpm

UP15053A





### Engine Driven Pump



PART NO.	DESCRIPTION	MATERIAL DESCRIPTION	QTY
12200	CASING HALF UPPER	CI IS 210-FG 260	01
12300	CASING HALF LOWER	CI IS 210-FG 260	01
15900*	IMPELLER	LT BR IS 316-LTB2	01
18001*	PUMP SHAFT	CS IS1570-40C8 HOT RLD	01
19000*	WEAR RING	CI IS 210-FG 200	02
19900	SHOULDER RING	CI IS 210-FG 200	02
22300	GLAND	CI IS 210-FG 200	02
22700	LANTERN RING	NYLON	02
24001	BRG. HOUSING DE	CI IS 210-FG 200	01
24002	BRG. HOUSING NDE	CI IS 210-FG 200	01
26000*	BALL BEARING	STEEL	02
31000*	SHAFT SLEEVE	ST ST ASTMA276-410 ANLD	02
32000*	KEY FOR IMPELLER	CS IS1570-40C8 HOT RLD	01
32100	KEY FOR COUPLING	CI IS 1570-40C8 HOT RLD	01
33600	LOCK NUT FOR BEARING	CI IS 1570-20C8 HOT RLD	01
43000*	GLAND PACKING	CHAMPION-3116 OR EQ	01
44101	GREASE NIPPLE-BEARING	IS 1367 CL-4.6 CDP	02
45000	VENT VALVE	NYLON	01
50000	OIL SEAL	NTR RBR ST SPRING	02
52201*	"O" RING - INSERT	NEOPRENE RUBBER	02
52202*	"O" RING - SHAFT SLEEVE	NEOPRENE RUBBER	02
97901	INSERT	CI IS 210-FG 260	02

• **RECOMMENDED SPARES**

O/A NO.	ITEM	DATE
	F08310A506	0400



SERVICE	WATER			
TAG NO.		QTY :- 02 NOS		
PUMP TYPE	UP 150/53		MAT. CODE : SPL MOC	
DESCRIPTION	CROSS SECTIONAL ASSEMBLY & SP. LIST			
DRAWN BY	ACS	CHECKED BY	SNP	APPROVED BY
DATE	25/07/09	DATE	25/07/09	DATE
KIRLOSKAR BROTHERS LIMITED				DRG. NO.
KIRLOSKARVADI. DIST.- SANGLI.(INDIA)				TC17409266-0

[illegible]



KIRLOSKAR BROTHERS LTD. KIRLOSKARWADI (INDIA)

NO. HA17400051-0

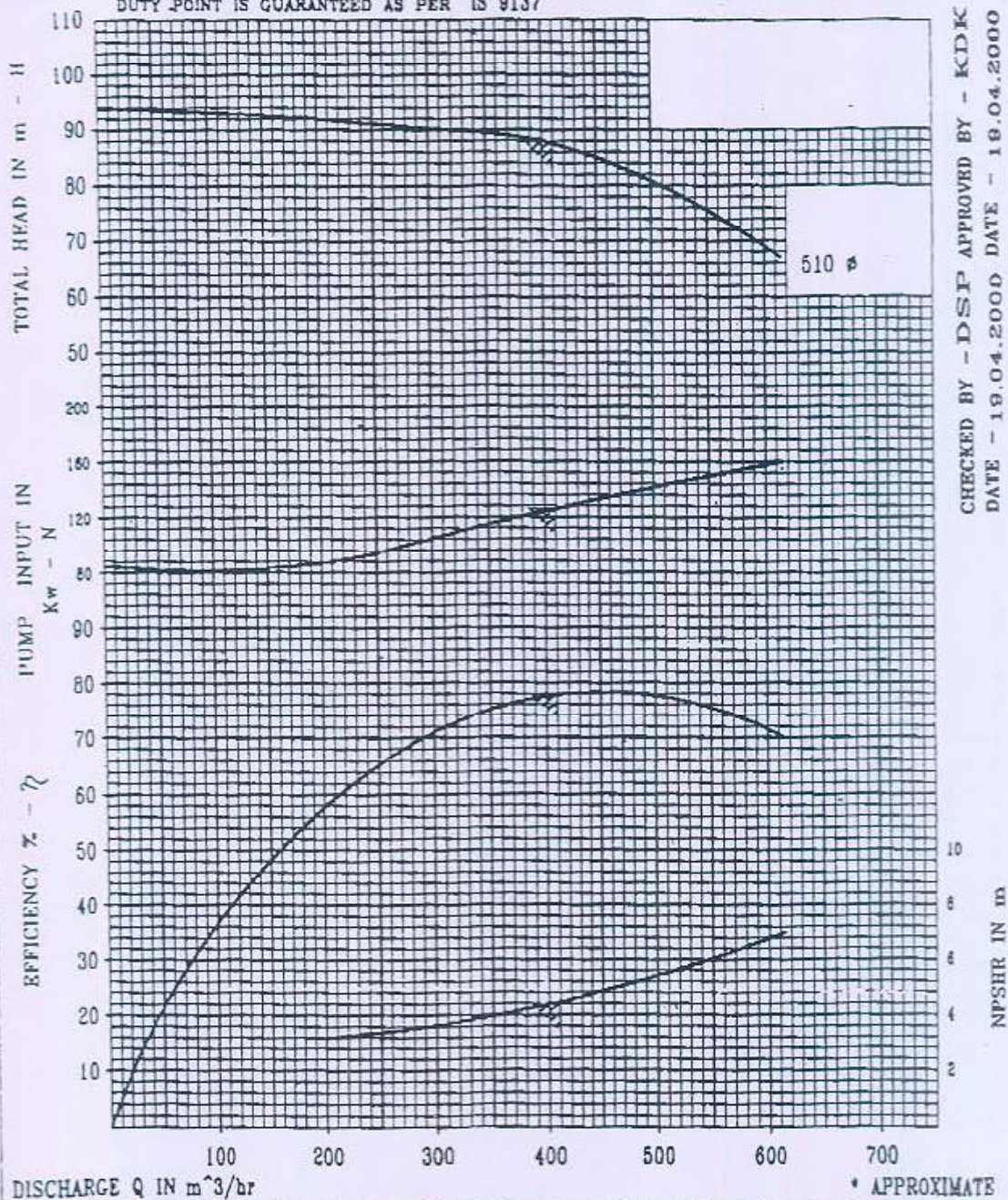
PERFORMANCE \* CURVE OF PUMP UP 150/53

SUC. 200 mm DEL. 150 mm

This curve relates to the liquid of S.G. 1.000 viscosity AS WATER

OA NO. F08310A 506

DUTY POINT IS GUARANTEED AS PER IS 9137

CHECKED BY - DSP APPROVED BY - KDK  
DATE - 19.04.2000 DATE - 19.04.2000

DISCHARGE Q IN m³/hr

\* APPROXIMATE

		GUARANTEED DUTY POINT	
PROJECT	Pragati Power Corporation	TOTAL HEAD H	88.00 m
SERVICE	FIRE FIGHTING Hydrant, Engine Driven	DISCHARGE Q	410.00 m³/hr
CONSULTANT / INDENTOR		PUMP INPUT N	125.97 kW
		PUMP EFFL. %	78.00 %
		REQD. NPSH	4.40 m
		MIN. SUBMERGENCE	0.00 mm
		RECOMMENDED PRIME MOVER	
		FULL LOAD SPEED	1500 rpm

UP150/53A

O/A NO./ITEM NO. - TENDER/0.00 dt./ /  
IMPELLER MAT./DLA. - BRONZE/510 mm.



**ANNEXURE-B**

**QUALIFYING REQUIREMENTS (QR)**

- 1.** Vendor shall be Authorized Service Dealer of M/s Kirloskar Brothers Limited.  
Valid Authorization Certificate from M/s Kirloskar Brothers Limited to be submitted.
- 2.** Bidder must not be under Insolvency Resolution Process or Liquidation or Bankruptcy Code Proceedings (IBC) as on date, by NCLT or any adjudicating authority/authorities, which will render him ineligible for participation in this tender, and shall submit undertaking (Annexure - 1) to this effect.

**ANNEXURE – 1**

**UNDERTAKING**

(To be typed and submitted in the Letter Head of the Company/Firm of Bidder)

**To,**

DGM/ PURCHASE  
BHEL-PSNR, PLOT NO. 25,  
SECTOR – 16A, NOIDA - 201301

Dear Sir/Madam,

**Sub: DECLARATION REGARDING INSOLVENCY/ LIQUIDATION/ BANKRUPTCY PROCEEDINGS**

**Ref:** NIT/Tender Specification No: **BHEL/PSNR/SCP/AG/E-3231**

I/We, \_\_\_\_\_  
declare that, I/We am/are not under insolvency resolution process or liquidation or Bankruptcy Code Proceedings (IBC) as on date, by NCLT or any adjudicating authority/authorities, which will render us ineligible for participation in this tender.

**Sign. of the AUTHORISED SIGNATORY  
(With Name, Designation and Company seal)**

Place:

Date:



**SPECIAL CONDITIONS OF CONTRACT (SCC)****IMPORTANT NOTES:**

*This is an E-tender floated online through our E-Procurement Site <https://eprocurebhel.co.in/nicgep/app>. The bidder should respond by submitting their offer online only in our e-Procurement platform at <https://eprocurebhel.co.in/nicgep/app>. Offers are invited in two-parts only. No Hard copy bid or bids through email/ fax shall be accepted. Bids are invited in two parts & shall be submitted as described below:*

<b>OFFER DESCRIPTION</b>	<b>DOCUMENTS TO BE UPLOADED &amp; MODALITY OF UPLOADING DOCUMENTS</b>
<b>TECHNICAL OFFER</b>	1. Copy of documentary evidences in support of PQR, Annexure-B 2. Upload Copy of SCC (To be attached in <b>Attachment</b> section); 3. Upload copy of GCC Rev 03 (To be attached in <b>Attachment</b> section); 4. Duly filled the applicable Annexures (I, II, III, V, VI, VII XI & XII). (To be attached in <b>Attachment</b> section). 5. FOR MSE VENDOR, Annexure-X ALONG WITH FORMAT AS PER CLAUSE 10.1 OF GCC REV 03.
<b>PRICE BID</b>	6. Duly filled in Price Schedule in the format of BOQ as per NIT.

Subsequent to techno commercial scrutiny, qualified Bidder shall be informed the date and time of opening of the Price Bid through system-generated email from BHEL E-Procurement system. Tenderers or their authorized representatives may witness the event online through BHEL E-Procurement site (<https://eprocurebhel.co.in/nicgep/app>).

**Bid should be free from correction, overwriting, using corrective fluid, etc. Any interlineation, cutting, erasure or overwriting shall be valid only if they are attested under full signature(s) of person(s) signing the bid else bid shall be liable for rejection.**

1. **SCOPE OF WORK:**  
Supply of Bushings and Pump Shaft (detailed in Annexure-A, above) for BHEL-Bawana site on FOR Destination basis.  
Unloading of materials at Destination/Site shall be in the BHEL's scope.
2. **PRICE BASIS:**  
Price in INR should be quoted for F.O.R destination delivery to BHEL-Bawana Site Office.
3. **EVALUATION CRITERIA:**  
Tender will be evaluated Grand Total Package wise based on the Net Cost to BHEL excluding GST on F.O.R basis, as indicated in BOQ of Tender subject to fulfilment of *Clause 10.5 of Instructions to bidders of General Conditions of Contract (GCC)*. However, order shall be placed on the Total Amount F.O.R. Basis. BHEL also reserves the right for not placing the order for any of the item depending upon requirement.
4. **TAXES AND DUTIES:**  
The contractor shall pay all (save the specific exclusions as enumerated in this clause) taxes, fees, license, charges, deposits, duties, tools, royalty, commissions, other charges, etc. which may be levied on the input goods & services consumed and output goods & services delivered in course of his operations in executing the contract. In case BHEL is forced to pay any of such taxes/duties, BHEL shall have the right to recover the same from his bills or otherwise as

deemed fit.

However, provisions regarding **GST** on output supply (goods/service) and TDS/TCS as per Income Tax Act shall be as per following clauses.

## **4.2 GST (Goods and Services Tax)**

4.2.1 Contractor's price/rates shall be **inclusive** of GST. However, reimbursement of GST is subject to compliance of following terms and conditions. BHEL shall have the right to deny payment of GST and to recover any loss to BHEL on account of tax, interest, penalty etc. for non-compliance of any of the following condition.

4.2.2 The admissibility of GST, taxes and duties referred in this chapter or elsewhere in the contract shall be limited to direct transactions between BHEL & its Contractor. BHEL shall not consider GST on any transaction other than the direct transaction between BHEL & its Contractor.

4.2.3 Where the GST laws permit more than one option or methodology for discharging the liability of tax/levy/duty, BHEL shall have the right to adopt the appropriate one considering the amount of tax liability on BHEL/Client as well as procedural simplicity with regard to assessment of the liability. The option chosen by BHEL shall be binding on the Contractor for discharging the obligation of BHEL in respect of the tax liability to the Contractor.

4.2.4 Contractor has to submit GST registration certificate of the concerned state. Contractor also needs to ensure that the submitted GST registration certificate should be in active status during the entire contract period.

4.2.5 Contractor/Vendor has to issue invoice indicating HSN/SAC code, Description, Value, Rate, applicable tax and other particulars in compliance with the provisions of relevant GST Act and Rules made thereunder.

4.2.6 Vendor has to submit GST compliant invoice within seven days from the due date of invoice as per GST Law. In case of delay, BHEL reserves the right of denial of GST payment if there occurs any hardship to BHEL in claiming the input thereof. In case of goods, vendor has to provide scan copy of invoice & GR/LR/RR to BHEL before movement of goods starts. Special care should be taken in case of month end transactions.

4.2.7 Vendor has to ensure that invoice in respect of such services which have been provided/completed on or before end of the month should not bear the date later than last working day of the month in which services are performed.

4.2.8 Subject to other provisions of the contract, GST amount claimed in the invoice shall be released on fulfilment of all the following conditions by the Contractor: -

- a. Supply of goods and/or services have been received by BHEL.
- b. Original Tax Invoice has been submitted to BHEL.
- c. Contractor/ Vendor has submitted all the documents required for processing of bill as per contract/ purchase order/ work order.
- d. In cases where e-invoicing provision is applicable, vendor/contractor is required to submit invoice in compliance with e-invoicing provisions of GST Act and Rules made thereunder.
- e. Contractor has filed all the relevant GST return (e.g. GSTR-1, GSTR-3B, etc.) pertaining to the invoice submitted and submit the proof of such return along with immediate subsequent invoice. In case of final invoice/ bill, contractor has to submit proof of such return within fifteen days from the due date of relevant return.
- f. Respective invoice has appeared in BHEL's GSTR - 2A for the month corresponding to the month of invoice. Alternatively, BG of appropriate value may be furnished which shall be valid at least one month beyond the due date of confirmation of relevant payment of GST on GSTN portal or sufficient security is available to adjust the financial impact in case of any default by the contractor.



	<p>g. Contractor has to submit an undertaking confirming the payment of all due GST in respect of invoices pertaining to BHEL.</p> <p>4.2.9 Any financial loss arises to BHEL on account of failure or delay in submission of any document as per contract/purchase order/work order at the time of submission of Tax invoice to BHEL, shall be deducted from contractor's bill or otherwise as deemed fit.</p> <p>4.2.10 TDS as applicable under GST law shall be deducted from contractor's bill.</p> <p>4.2.11 Contractor shall comply with the provisions of e-way bill wherever applicable. Further wherever provisions of GST Act permits, all the e-way bills, road permits etc. required for transportation of goods needs to be arranged by the contractor.</p> <p>4.2.12 Contractor shall be solely responsible for discharging his GST liability according to the provisions of GST Law and BHEL will not entertain any claim of GST/interest/penalty or any other liability on account of failure of contractor in complying the provisions of GST Law or discharging the GST liability in a manner laid down thereunder.</p> <p>4.2.13 In case declaration of any invoice is delayed by the vendor in his GST return or any invoice is subsequently amended/alterd/deleted on GSTN portal which results in any adverse financial implication on BHEL, the financial impact thereof including interest/penalty shall be recovered from the Contactor's due payment.</p> <p>4.2.14 Any denial of input credit to BHEL or arising of any tax liability on BHEL due to non-compliance of GST Law by the Contractor in any manner, will be recovered along with liability on account of interest and penalty (if any) from the payments due to the Contactor.</p> <p>4.2.15 In the event of any ambiguity in GST law with respect to availability of input credit of GST charged on the invoice raised by the contractor or with respect to any other matter having impact on BHEL, BHEL's decision shall be final and binding on the contractor.</p> <p>4.2.16 <b><u>Variation in Taxes &amp; Duties:</u></b> Any upward variation in GST shall be considered for reimbursement provided supply of goods and services are made within schedule date stipulated in the contract or approved extended schedule for the reason solely attributable to BHEL. However downward variation shall be subject to adjustment as per actual GST applicability.</p> <p>In case the Government imposes any new levy/tax on the output service/goods after price bid opening, the same shall be reimbursed by BHEL at actual. The reimbursement under this clause is restricted to the direct transaction between BHEL and its contactor only and within the contractual delivery period only.</p> <p>In case any new tax/levy/duty etc. becomes applicable after the date of Bidder's offer but before opening of the price Bid, the Bidder/Contractor must convey its impact on his price duly substantiated by documentary evidence in support of the same before opening of price bid. Claim for any such impact after opening the price bid will not be considered by BHEL for reimbursement of tax or reassessment of offer.</p> <p><b>4.3 Income Tax:</b> <b>TDS/TCS</b> as applicable under Income Tax Act, 1961 or rules made thereunder shall be deducted/collected from contractor's bill.</p>
5.	<b><u>ROAD PERMIT:</u></b> E-way Bill shall be issued by Seller/Supplier.
6.	<b><u>INSPECTION:</u></b> Not Required
7.	<b><u>MODE OF DESPATCH</u></b> : Supplier's Scope.

8.	<p><b><u>DELIVERY:</u></b>  Delivery of material shall be completed within 24 weeks from the date of issuance of Purchase Order.  LR/ GR/ RR date (treated as the date of dispatch) shall also mean as date of Delivery for levying LD. However, if date of receipt of material at destination is beyond ten (10) days from the date of LR, such excess period shall be considered for LD purpose.</p>		
9.	<p><b><u>TRANSIT INSURANCE:</u></b> Supplier's Scope.</p>		
10.	<p><b><u>VALIDITY OF OFFER:</u></b>  Offer should be valid for a period of 60 Days from the date of Techno-commercial Bid (Part-I) opening.</p>		
11.	<p><b><u>PAYMENT TERMS:</u></b>  100% Payment within 30days of receipt of material at site against submission of complete billing documents.</p>		
12.	<p><b><u>BILLING DOCUMENTS/ DOCUMENTS REQUIRED ALONG WITH DISPATCH OF MATERIAL:</u></b>  The billing documents required for 100% payment are:</p> <ul style="list-style-type: none"> <li>• Original Tax Invoice (As per <b>Cl. No. 4</b> above).</li> <li>• Copy of LR/GR.</li> <li>• Material Test Certificates/ Certificate of Compliance /Certificate of Interchangeability</li> <li>• Warranty / Guarantee Certificate.</li> <li>• MDCC from Customer/ PPCL</li> </ul>		
13.	<p><b><u>PERFORMANCE BANK GUARANTEE &amp; EMD:</u></b> Not applicable.</p>		
14.	<p><b><u>PAYING AUTHORITY:</u></b>  Construction Manager, BHARAT HEAVY ELECTRICALS LIMITED, PSNR, PRAGATI-III, CCPP, SECTOR-5, BAWANA INDUSTRIAL AREA, DELHI-110039.</p>		
15.	<p><b><u>WARRANTY/GUARANTEE:</u></b>  Applicable as per clause 11 of General Commercial Terms &amp; Conditions of GCC .</p>		
16.	<p><b><u>MSE BIDDER:</u></b>  As per clause 10 of Instruction to Bidders of GCC.</p>		
17.	<p><b><u>REVERSE AUCTION:</u></b>  Not Applicable</p>		
18.	<p><b><u>LIQUIDATED DAMAGES:</u></b>  Applicable as per clause 15.0 of General Commercial Terms &amp; Conditions of GCC.</p>		
19.	<p><b><u>Risk and Cost against Balance Work:</u></b>  Applicable as per clause 26.0 of General Commercial Terms &amp; Conditions of GCC.</p>		
20.	<p><b>Bidders are requested to go through Bidder manual available on <a href="https://eprocurebhel.co.in/nicgep/app">https://eprocurebhel.co.in/nicgep/app</a></b>  In the event of any queries during submission of the tender thru BHEL's E-Procurement portal, you may pls contact-NIC Customer Care.</p>		
21.	<p><b>In the event of any Technical or Commercial queries, the same may please be addressed to the following BHEL concerned before Part I opening-</b></p> <table border="1"> <tr> <td> Aditti Gupta, Sr. Engineer/Purchase  Email id: <a href="mailto:aditi@bhel.in">aditi@bhel.in</a>,  Ph. No. +91-9971926020  +91-0120-2416511 </td> <td> I C Kumar, DGM /Purchase  Email id – ick@bhel.in,  Ph. No. +91- 9783968885,  +91-0120-2416292 </td> </tr> </table>	Aditti Gupta, Sr. Engineer/Purchase Email id: <a href="mailto:aditi@bhel.in">aditi@bhel.in</a> , Ph. No. +91-9971926020 +91-0120-2416511	I C Kumar, DGM /Purchase Email id – ick@bhel.in, Ph. No. +91- 9783968885, +91-0120-2416292
Aditti Gupta, Sr. Engineer/Purchase Email id: <a href="mailto:aditi@bhel.in">aditi@bhel.in</a> , Ph. No. +91-9971926020 +91-0120-2416511	I C Kumar, DGM /Purchase Email id – ick@bhel.in, Ph. No. +91- 9783968885, +91-0120-2416292		



22.	<b><u>ORDER OF PRECEDENCE:</u></b> In case of contradiction / conflict, the order of precedence shall be in the order as per <b>clause 24</b> of General Commercial Terms & Conditions of GCC.
-----	---