



BHARAT HEAVY ELECTRICALS LIMITED

HEEP HARIDWAR INDIA-PIN 249403

FAX NO: 0091 1334 226462

PHONE NO: 01334 285076

REQUIREMENT OF PIN PUNCH, WRENCH, ALLEN KEY etc.

The Heavy Electricals Equipment Plant (HEEP) located in Haridwar, India is one of the major manufacturing plants of Bharat Heavy Electricals Ltd. The core business of HEEP includes design and manufacture of large steam and gas turbines, turbo generators, Defense Items and so on.

Details of items details as below:

SLN	MAT CODE	ITEM DISCREPTION	QUANTITY (NOS.)	Delivery Schedule (Days)
1	W97013103012	PIN PUNCH, NOMINAL SIZE: 2MM AS PER DRG NO-47829712230, MATERIAL: CHROME VANADIUM ALLOY STEEL	10	45
2	W97013103020	PIN PUNCH, NOMINAL SIZE: 3 MM AS PER DRG NO-47829712231, MATERIAL: CHROME VANADIUM ALLOY STEEL	10	45
3	W97013103039	PIN PUNCH, NOMINAL SIZE: 4 MM AS PER DRG NO-47829712232, MATERIAL: CHROME VANADIUM ALLOY STEEL	10	45
4	W97013103047	PIN PUNCH, NOMINAL SIZE: 5 MM AS PER DRG NO-47829712233, MATERIAL: CHROME VANADIUM ALLOY STEEL	10	45
5	W97017101073	FEELER GAUGE LENGTH = 100 MM 0.05 -1.00 MM 13 LEAVES, MODEL: 184 - 305S OF MITUTOYO OR EQUIVALENT	10	45
6	W97017102010	WRENCH, DOUBLE HEAD 10X11, MADE OF CROME-VANADIUM STEEL ALLOY AND CROME PLATED, REFERENCE: DOUBLE ENDED OPEN JAW SPANNERS NO.12 OF JHALANI OR EQUIVALENT	10	45
7	W97017102029	WRENCH, DOUBLE HEAD 13X14 MADE OF CROME-VANADIUM STEEL ALLOY AND CROME PLATED AS PER DIN 3110 NO. 895 JHALANI MAKE. N.STD: JHALANI MAKE	10	45
8	W97017102070	WRENCH, DOUBLE HEAD 27X30 MADE OF CROME -VANADIUM STEEL ALLOY AND CROME PLATED AS PER DIN 3110 NO. 895 JHALANI MAKE OR EQUIVALENT N.STD: JHALANI MAKE	10	45
9	W97017102096	WRENCH, DOUBLE HEAD 36X41 MADE OF CROME-VANADIUM STEEL ALLOY AND CROME PLATED AS PER DIN 3110 NO. 895 JHALANI MAKE OR EQUIVALENT N.STD: JHALANI MAKE	10	45
10	W97017102100	WRENCH, DOUBLE HEAD 41X46 MADE OF CROME-VANADIUM STEEL ALLOY AND CROME PLATED AS PER DIN 3110 NO. 895 JHALANI MAKE OR EQUIVALENT N.STD: JHALANI MAKE	10	45

11	W97017102126	WRENCH, DOOUBLE HEAD 6X7 MADE OF CROME-VANADIUM STEEL ALLOY AND CROME PLATED AS PER DIN 3110 NO. 895 JHALANI MAKE OR EQUIVALENT N.STD: JHALANI MAKE	10	45
12	W97017102142	WRENCH, ELBOW, SQUARE SOCKET 7 MM, MADE OF ALLOY STEEL	10	45
13	W97017103025	ALLEN KEY 12 MM MADE OF CROME - VANADIUM STEEL NO. 42 JHALANI MAKE OR EQUIVALENT N.STD: JHALANI MAKE	10	45
14	W97017103076	ALLEN KEY 2.5 MM, T-SHAPE, MADE OF CROME-VANADIUM ALLOY STEEL, WITH INSULATED HANDLE	10	45
15	W97017104013	WRENCH, HOOK TYPE MADE OF CROME-VANADIUM ALLOY STEEL FOR SIZE: 25-28 MM	10	45
16	W97017106016	WRENCH, RING NUT MADE OF CROME-VANADIUM ALLOY STEEL SIZE 15 MM (AS PER DRAWING P/N 157697420)	10	45
17	W97020105025	HAND OPERATED GREASE GUN WITH ACCESSORIES AS PER SPEC. DPE/TS/GG-127697186	10	45
18	W97044701019	EMERY STONE CAT. ABC 9730/1 OF M/S ABC. SIZE 5 (150MM X 20MM X 10MM) OR EQUIVALENT	10	45
19	W97044701027	EMERY STONE CAT. 9730/2 SIZE 5 (150X20X10) MM OR EQUIVALENT	10	45
20	W97017112040	CLICK TORQUE WRENCH 20-100NM, 1/2 INCH SQUARE DRIVE, SCALE GRADUATIONS-1NM ACCURACY +/-3% MODEL A 2833 OF TOHNICHI OR EQUIVALENT	10	45
21	W97017112059	TORQUE MULTIPLIER OUTPUT CAPACITY, 1000 FT. LB., INPUT CAPACITY, 249 FT. LB., GEAR RATIO 4:1, TORQUE RATIO 3.4:1, INPUT DRIVE FEMALE 1/2 SQ. IN., OUTPUT DRIVE MALE 3/4 SQ. IN., TORQUE ACCURACY RATIO IS +/-10%. MODEL GA184A OF SNAP-ON OR EQUIVALENT	10	45
22	W97017112067	EXTENSION BAR FOR TORQUE WRENCH, 1/2 IN SQUARE DRIVE, 75MM OVERALL LENGTH, MODEL SCU 971 RA-75 OF SICUTOOL OR EQUIVALENT	10	45
23	W97017101022	WRENCH 13/16 MADE OF CHROME-VANADIUM STEEL AND CROMIUM PLATED. REFERENCE: COMBINATION OPEN & BOX END WRENCHES NO.14 OF JHALANI OR EQUIVALENT	10	45
24	W97017101049	WRENCH 9/16 MADE OF CHROME-VANADIUM STEEL AND CROMIUM PLATED, REFERENCE: COMBINATION OPEN & BOX END WRENCHES NO. 14 OF JHALANI OR EQUIVALENT	10	45
25	W97017101057	WRENCH, ADJUSTABLE, L=200MM NO. 91/8 JHALANI MAKE OR EQUIVALENT	10	45

		N.STD: JHALANI MAKE		
26	W97017102037	WRENCH DOUBLE HEAD 14X17 MADE OF CROME VANADIUM ALLOY STEEL, CROME PLATED AS PER DIN 3110 NO. 895 JHALANI MAKE. N.STD: JHALANI MAKE	10	45
27	W97017102045	WRENCH, DOUBLE HEAD 17X19 MADE OF CROME-VANADIUM STEEL ALLOY AND CROME PLATED AS PER DIN 3110 NO. 895 JHALANI MAKE OR EQUIVALENT N.STD: JHALANI MAKE	10	45
28	W97017102053	WRENCH, DOUBLE HEAD 19X22 MADE OF CROME-VANADIUM STEEL ALLOY AND CROME PLATED AS PER DIN 3110 NO. 895 JHALANI MAKE OR EQUIVALENT N.STD: JHALANI MAKE	10	45
29	W97017102061	WRENCH, DOUBLE HEAD 24X27 MADE OF CROME-VANADIUM STEEL ALLOY AND CROME PLATED AS PER DIN 3110 NO. 895 JHALANI MAKE OR EQUIVALENT N.STD: JHALANI MAKE	10	45
30	W97017102088	WRENCH, DOUBLE HEAD 30X32 MADE OF CROME-VANADIUM STEEL ALLOY AND CROME PLATED AS PER DIN 3110 NO. 895 JHALANI MAKE OR EQUIVALENT N.STD: JHALANI MAKE	10	45
31	W97017102134	WRENCH, DOUBLE HEAD 8X10 MADE OF CROME-VANADIUM STEEL ALLOY AND CROME PLATED AS PER DIN 3110 NO. 895 JHALANI MAKE OR EQUIVALENT N.STD: JHALANI MAKE	10	45
32	W97017102150	WRENCH, DOUBLE HEAD, 50/55 SIZE	10	45
33	W97017103017	ALLEN KEY 10 MM MADE OF CROME-VANADIUM STEEL NO. 42 JHALANI MAKE OR EQUIVALENT N.STD: JHALANI MAKE	10	45
34	W97017103033	ALLEN KEY 14 MM MADE OF CROME -VANADIUM STEEL NO. 42 JHALANI MAKE OR EQUIVALENT N.STD: JHALANI MAKE	10	45
35	W97017103041	ALLEN KEY 4 MM MADE OF CROME -VANADIUM STEEL NO. 42 JHALANI MAKE OR EQUIVALENT N.STD: JHALANI MAKE	10	45
36	W97017103050	ALLEN KEY 6 MM MADE OF CROME - VANADIUM STEEL NO. 42 JHALANI MAKE OR EQUIVALENT N.STD: JHALANI MAKE	10	45
37	W97017103068	ALLEN KEY 8 MM MADE OF CROME VANADIUM STEEL NO. 42 JHALANI MAKE OR EQUIVALENT N.STD: JHALANI MAKE	10	45

38	W97017103084	ALLEN KEY 3 MM, T-SHAPE, MADE OF CROME-VANADIUM ALLOY STEEL, WITH INSULATED HANDLE	10	45
39	W97017103092	ALLEN KEY 5 MM, T-SHAPE, MADE OF CROME-VANADIUM ALLOY STEEL, WITH INSULATED HANDLE	10	45
40	W97017107012	WRENCH ELBOW 8 MM, SQUARE SOCKET, MADE OF ALLOY STEEL.	10	45
41	W97017114027	PLIER, UNIVERSAL. MADE OF CROME- VANADIUM STEEL ALLOY, CHROMIUM PLATED & L=175 MM. NO. 817 OF JHALANI MAKE. N.STD: JHALANI MAKE	10	45
42	W97017115023	SCREW DRIVER, MADE OF CROME- VANADIUM STEEL ALLOY. TIP= 10X1.2 DIA 10 MM, L=200 MM MAKE TAPARIA OR EQUIVALENT N.STD: TAPARIA MAKE	10	45

1. EARLY DELIVERY ACCEPTABLE.
2. ALL VENDORS TO PROVIDE POINT WISE REPLY/CONFIRMATION ALONG WITH RELEVANT SUPPORTING DOCUMENTS TO EACH AND EVERY POINT OF **PRE-QUALIFICATION REQUIREMENT/PQR** FOR ALL ENQUIRY ITEMS. NONCOMPLIANCE OF THESE MAY LEAD TO REJECTION OF OFFER AS THESE ARE ESSENTIAL CONDITION FOR PARTICIPATING IN TENDER ENQUIRY.
3. KINDLY UPLOAD/ATTACH THE SPECIFICATION DETAILS/ CATALOGUE OF OFFERED ITEMS.
4. KINDLY **SUBMIT TECHNO-COMMERCIAL CHECKLIST** ALONG WITH YOUR OFFER.
5. KINDLY **SUBMIT PQR SHEET WITH SUPPORTING DOCUMENTS** ALONG WITH YOUR OFFER.
6. VENDOR TO PROVIDE TEST CERTIFICATES AS PER SPECIFIED MANUFACTURER'S STANDARD PRACTICE INCLUDING DOCUMENTS CONFORMING TO ENQUIRY MAKE/MODEL/PART NO. ALONG WITH THE MATERIAL.
7. IN CASE OF EQUIVALENTS OR UNDEFINED MAKE, VENDOR TO PROVIDE ORIGINAL MANUFACTURER'S TEST CERTIFICATES/DOCUMENTS OF TOOLS MEETING ENQUIRY TECHNICAL REQUIREMENT (INLCUDING WRENCH CALIBRATION CERTIFICATES).
8. VENDOR TO PROVIDE CERTIFICATE OF CONFORMANCE.
9. VENDOR TO PROVIDE IDENTIFICATION OF ALL ITEMS AND SUBSEQUENT IDENTIFICATION REPORTS.

QUALIFYING CONDITIONS FOR TORQUE WRENCH (W97017112040) and TORQUE MULTIPLIERS (W97017112059)

Sl.	PQR Requirement	Vendor Response	Vendor Response (Yes / No)
1.	who can manufacture or supply Torque Wrench & Torque Multiplier as per BHEL tender requirement or its equivalent.	Vendor to confirm	
2.	Vendor to submit valid ISO 9001 certificate.	Vendor to submit	
3.	Vendor to submit experience of supply of Torque wrench and Torque Multiplier. Documents like Unpriced PO copy/ Dispatch docs etc to be submitted.	Vendor to submit	
4.	There shall be no pending rejections of supplied PO.	Vendor to confirm	
5.	Authorized dealer/distributor to submit Authorization Certificate from their OEM.	Vendor to confirm and provide	
6.	Vendor to submit calibration certificate from NABL approved LAB for TORQUE WRENCH along with supply.	Vendor to submit	
7.	Vendor to submit technical Catalogue.	Vendor to submit	
8.	Can provide Certificate of Conformance (COC) <i>(also known as Certificate of Conformity or Certificate of Compliance)</i>	Vendor to confirm	
9.	BHEL reserves the right to verify information submitted by vendor. In case the information is found to be false/incorrect, the offer shall be rejected.	Vendor to accept & confirm	

QUALIFYING CONDITIONS FOR REMAINING HAND TOOLS

Sl.	PQR Requirement	Vendor Response	Vendor Response (Yes / No)
1.	who can manufacture or supply HAND TOOLS as per BHEL tender requirement or its equivalent.	Vendor to confirm	
2.	Vendor to submit valid ISO 9001 certificate.	Vendor submit	
3.	Vendor to submit technical Catalogue.	Vendor to submit	
4.	There shall be no pending rejections of supplied PO.	Vendor to confirm	
5.	Can provide Certificate of Conformance (COC) <i>(also known as Certificate of Conformity or Certificate of Compliance)</i>	Vendor to confirm	
6.	BHEL reserves the right to verify information submitted by vendor. In case the information is found to be false/incorrect, the offer shall be rejected.	Vendor to accept & confirm	

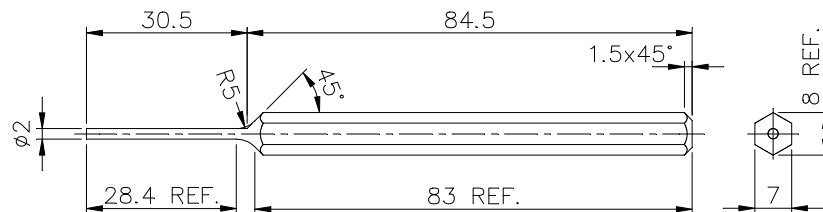
TECHNO-COMMERCIAL CHECKLIST

SL. NO.	TERMS & CONDITION	VENDOR CONFIRMATION /REMARKS / REPLY
TENDER DETAILS		
1	BIDDER NAME	
2	GEM BID NO	
QUALITY & TECHNICAL REQUIREMENTS		
3	VENDORS TO CONFIRM TO PROVIDE POINT WISE REPLY/ CONFIRMATION ALONG WITH RELEVANT SUPPORTING DOCUMENTS TO EACH AND EVERY POINT OF PRE-QUALIFICATION REQUIREMENT/PQR FOR ALL ENQUIRY ITEMS. NONCOMPLIANCE OF THESE MAY LEAD TO REJECTION OF OFFER AS THESE ARE ESSENTIAL CONDITION FOR PARTICIPATING IN TENDER ENQUIRY	
4	VENDOR TO CONFIRM TO PROVIDE TEST CERTIFICATES AS PER SPECIFIED MANUFACTURER'S STANDARD PRACTICE INCLUDING DOCUMENTS CONFORMING TO ENQUIRY MAKE/MODEL/PART NO. ALONG WITH THE MATERIAL	
5	IN CASE OF EQUIVALENTS OR UNDEFINED MAKE, VENDOR TO CONFIRM TO PROVIDE ORIGINAL MANUFACTURER'S TEST CERTIFICATES/DOCUMENTS OF TOOLS MEETING ENQUIRY TECHNICAL REQUIREMENT (INLCUDING WRENCH CALIBRATION CERTIFICATES)	
6	VENDOR TO CONFIRM TO PROVIDE CERTIFICATE OF CONFORMANCE	
7	VENDOR TO CONFIRM TO PROVIDE IDENTIFICATION OF ALL ITEMS AND SUBSEQUENT IDENTIFICATION REPORTS	
COMMERICAL REMARKS		
8	ITEMS TO BE SUPPLIED AS PER ITEM DESCRIPTION/ SPECIFICATION/DRWAING/ STANDARD.	
9	BREACH OF CONTRACT CLAUSE:. IN CASE OF BREACH OF CONTRACT, WHEREVER THE VALUE OF SECURITY INSTRUMENTS LIKE PERFORMANCE BANK GUARANTEE AVAILABLE WITH BHEL AGAINST THE SAID CONTRACT IS ATLEAST 10% OF THE CONTRACT VALUE, THE SAME BE ENCASHED. IN CASE THE VALUE OF THE SECURITY INSTRUMENTS AVAILABLE IS LESS THAN 10% OF THE CONTRACT VALUE, THE BALANCE AMOUNT BE RECOVERED FROM OTHER FINANCIAL REMEDIES (I.E. AVAILABLE BILLS OF THE CONTRACTOR, RETENTION AMOUNT, ETC. WITH BHEL) OR LEGAL REMEDIES BE PURSUED.	
10	ACTION AGAINST BIDDERS / VENDOR / SUPPLIER / CONTRACTOR IN CASE OF DEFAULT: IN ORDER TO PROTECT THE COMMERCIAL INTERESTS OF BHEL, BHEL SHALL TAKE ACTION AGAINST SUPPLIES / CONTRACTORS BY WAY OF SUSPENSION OF BUSINESS DEALINGS, WHO EITHER FAIL TO PERFORM OR ARE IN DEFAULT WITHOUT ANY REASONABLE CAUSE, CAUSE LOSS OF BUSINESS/ MONEY/ REPUTATION, INDULGE IN MALPRACTICES, CHEATING, BRIBERY, FRAUD OR ANY OTHER MISCONDUCT OR FORMATION OF CARTELS SO AS TO INFLUENCE THE BIDDING PROCESS OR INFLUENCE THE PRICE ETC.SUSPENSION OF BUSINESS DEALINGS COULD BE IN THE FORM OF "HOLD" OR "BANNING" A SUPPLIER/ CONTRACTOR OR A BIDDER AND SHALL BE AS PER "GUIDELINES FOR SUSPENSION OF BUSINESS DEALINGS WITH SUPPLIERS/ CONTRACTORS" AVAILABLE AT BHEL'S WEBSITE " https://www.bhel.com/guidelines-suspension-business-dealings-supplierscontractors "	
11	REST GENERAL TERMS AND CONDITIONS AS PER GeM	

FIRST ANGLE PROJECTION (ALL DIMENSIONS ARE IN mm) FORM DG 39(B)

REV	DATE	ALTERED	REV	DATE	ALTERED SANDEEP	CBOM	STATUS OF DRG
		CHECKED	03	04.03.21	CHECKED R.P.SINGH	07829718011-00	U
		DWG SUPERSEDED WITH SAME NO. & DESIGN REVIEWED.		AGREED DEPT	NAME	SIGN	DATE
		DPE-21-F0011		NCT	S.K.GUPTA	Sd/-	22.11.03
GRADE OF UNTOL.DIM		M/CG. C/M/P	-AA0230208		WELDING A/B/C/D	AA0621104	GAS CUTTING-T3 AA0621101

1.6 / ALL OVER EXCEPT
 OTHERWISE STATED



NOTE :

- SUPPLIERS MAY ALSO SUPPLY PIN/DRIFT PUNCHES AS PER IS:6860-TYPE-B OR DIN:6450-FORM-C IN PLACE OF CUSTOM/MANUFACTURED ITEM

TECH. REQUIREMENTS FOR MANUFACTURED ITEM

- ENGRAVE/ETCH SIZE 'ø2' AND P/N '127697230' ON ONE HEX SURFACE.
- FINAL PROTECTIVE FINISH IS DECORATIVE CHROME

TECH. REQUIREMENTS FOR IS:6860-B / DIN:6450-C ITEM

- SIZE MUST BE ENGRAVED/ETCHED AT SUITABLE PLACE FOR IDENTIFICATION
- FINAL PROTECTIVE FINISH IS DECORATIVE CHROME

Inventory No.	DEPT DPE	SCALE N.T.S.	WEIGHT (KG) 0.026	REF. TO ASSY. DRG. 07829718011	ITEM No. 21	NO. OF ITEMS —
	CODE 4260					
Title :	PIN PUNCH			CARD CODE	DRAWING NO. 47829712230	
	SRGM 76/62			—	SHEET No. 01 No. OF SHEETS 01	



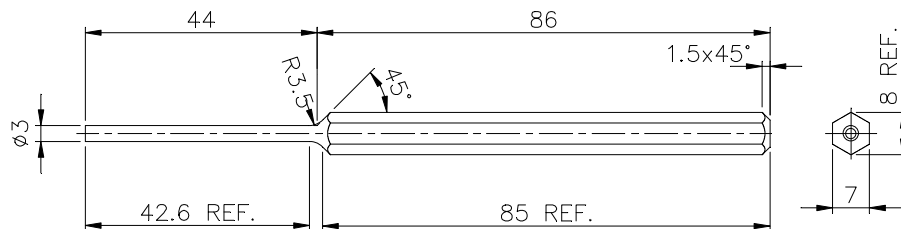
BHARAT HEAVY ELECTRICALS LTD.
 RANIPUR, HARDWAR

NAME	SIGN	DATE	NO. OF VAR
DRN C.SINGH	Sd/-	22.09.03	—
CHD ANAND	Sd/-	22.09.03	—
APPD L.CHAND	Sd/-	29.11.03	—

FIRST ANGLE PROJECTION (ALL DIMENSIONS ARE IN mm) FORM DG 39(B)

REV	DATE	ALTERED	REV	DATE	ALTERED SANDEEP	CBOM	STATUS OF DRG		
		CHECKED			01			04.03.21	CHECKED R.P.SINGH
			DESIGN REVIEWED.			AGREED DEPT	NAME	SIGN	DATE
			DPE-21-F0011			NCT	S.K.GUPTA	Sd/-	22.11.03
GRADE OF UNTOL.DIM M/CG. C/M/P -AA0230208 WELDING A/B/C/D AA0621104 GAS CUTTING-T3 AA0621101									

1.6 / ALL OVER EXCEPT
 OTHERWISE STATED



NOTE :

- SUPPLIERS MAY ALSO SUPPLY PIN/DRIFT PUNCHES AS PER IS:6860-TYPE-B OR DIN:6450-FORM-C IN PLACE OF CUSTOM/MANUFACTURED ITEM

TECH. REQUIREMENTS FOR MANUFACTURED ITEM

- ENGRAVE/ETCH SIZE 'ø3' AND P/N '127697231' ON ONE HEX SURFACE.
- FINAL PROTECTIVE FINISH IS DECORATIVE CHROME

TECH. REQUIREMENTS FOR IS:6860-B / DIN:6450-C ITEM

- SIZE MUST BE ENGRAVED/ETCHED AT SUITABLE PLACE FOR IDENTIFICATION
- FINAL PROTECTIVE FINISH IS DECORATIVE CHROME

Ref.Drawing No.
1276-97-231-00

Sign & Date



BHARAT HEAVY ELECTRICALS LTD.
RANIPUR, HARDWAR

DRN	NAME	SIGN	DATE	NO. OF VAR
C.SINGH	Sd/-	22.09.03	—	
CHD	ANAND	Sd/-	22.09.03	
APPD	L.CHAND	Sd/-	29.11.03	

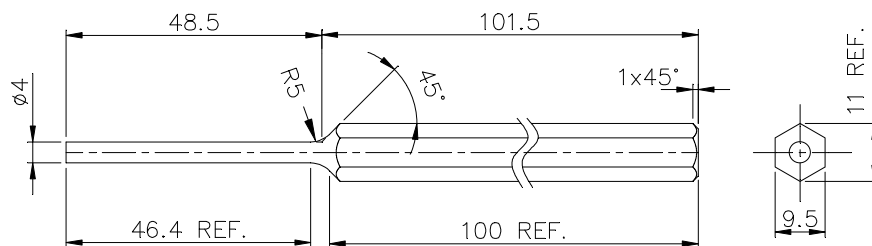
DEPT DPE	SCALE	WEIGHT (KG)	REF. TO ASSY. DRG.	ITEM No.	NO. OF ITEMS
CODE 4260	N.T.S.	0.028	07829718011	22	—
TITLE : PIN PUNCH			DRAWING NO. 47829712231		
SRGM 76/62			SHEET No. 01 No. OF SHEETS 01		

A4 SIZE

FIRST ANGLE PROJECTION (ALL DIMENSIONS ARE IN mm) FORM DG 39(B)

REV	DATE	ALTERED	REV	DATE	ALTERED	SANDEEP	CBOM	STATUS OF DRG		
		CHECKED			CHECKED				R.P.SINGH	
			01	04.03.21			07829718011-00	U		
ZONE			DESIGN REVIEWED. DPE-21-F0011				AGREED DEPT	NAME	SIGN	DATE
							DABG-T	SUMIT	Sd/-	09.12.17
GRADE OF UNTOL.DIM M/CG. C/M/P -AA0230208 WELDING X/B/S/B-AA0621104 GAS CUTTING-T3-AA0621101										

1.6 / ALL OVER EXCEPT
✓ OTHERWISE STATED



NOTE :

- SUPPLIERS MAY ALSO SUPPLY PIN/DRIFT PUNCHES AS PER IS:6860-TYPE-B OR DIN:6450-FORM-C IN PLACE OF CUSTOM/MANUFACTURED ITEM

TECH. REQUIREMENTS FOR MANUFACTURED ITEM

- ENGRAVE/ETCH SIZE 'Ø4' AND P/N '127697232' ON ONE HEX SURFACE.
- FINAL PROTECTIVE FINISH IS DECORATIVE CHROME

TECH. REQUIREMENTS FOR IS:6860-B / DIN:6450-C ITEM

- SIZE MUST BE ENGRAVED/ETCHED AT SUITABLE PLACE FOR IDENTIFICATION
- FINAL PROTECTIVE FINISH IS DECORATIVE CHROME

Ref.Drawing No.
1276-97-232-00

Sign & Date



BHARAT HEAVY ELECTRICALS LTD.
RANIPUR, HARDWAR

	NAME	SIGN	DATE	NO. OF VAR
DRN	HARENDRA	Sd/-	07.11.17	
CHD	RAHUL	Sd/-	09.12.17	-
APPD	SK.SINGH	Sd/-	11.12.17	

Inventory No.

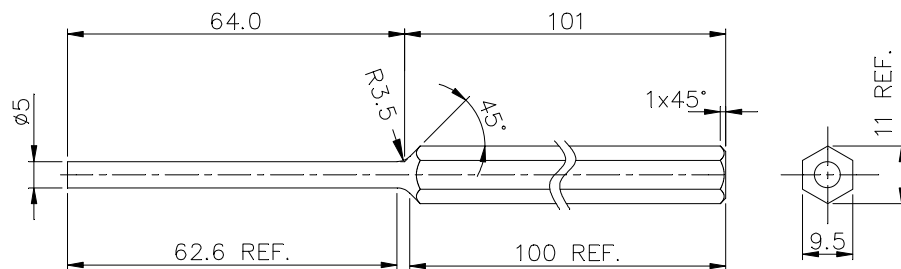
DEPT DPE	SCALE	WEIGHT (KG)	REF. TO ASSY. DRG.	ITEM No.	NO. OF ITEMS
CODE 4260	N.T.S.	0.062	07829718011	23	-
TITLE : PIN PUNCH			CARD CODE	DRAWING NO. 47829712232	-
SRGM 76/62			-	SHEET No. 01	No. OF SHEETS 01

A4 SIZE

FIRST ANGLE PROJECTION (ALL DIMENSIONS ARE IN mm) FORM DG 39(B)

REV	DATE	ALTERED	REV	DATE	ALTERED	SANDEEP	CBOM	STATUS OF DRG		
		CHECKED			CHECKED				R.P.SINGH	
			01	04.03.21			07829718011-00	U		
ZONE			DESIGN REVIEWED. DPE-21-F0011				AGREED	NAME	SIGN	DATE
							DEPT			
							DABG-T	SUMIT	Sd/-	09.12.17
GRADE OF UNTOL.DIM M/CG. C/M/P -AA0230208 WELDING X/B/G/B AA0621104 GAS CUTTING T3 AA0621101										

1.6 / ALL OVER EXCEPT
✓ OIHERWISE STATED



NOTE :

- SUPPLIERS MAY ALSO SUPPLY PIN/DRIFT PUNCHES AS PER IS:6860-TYPE-B OR DIN:6450-FORM-C IN PLACE OF CUSTOM/MANUFACTURED ITEM

TECH. REQUIREMENTS FOR MANUFACTURED ITEM

- ENGRAVE/ETCH SIZE ' $\phi 5$ ' AND P/N '127697233' ON ONE HEX SURFACE.
- FINAL PROTECTIVE FINISH IS DECORATIVE CHROME

TECH. REQUIREMENTS FOR IS:6860-B / DIN:6450-C ITEM

- SIZE MUST BE ENGRAVED/ETCHED AT SUITABLE PLACE FOR IDENTIFICATION
- FINAL PROTECTIVE FINISH IS DECORATIVE CHROME

Ref.Drawing No.
1276-97-233-00

Sign & Date



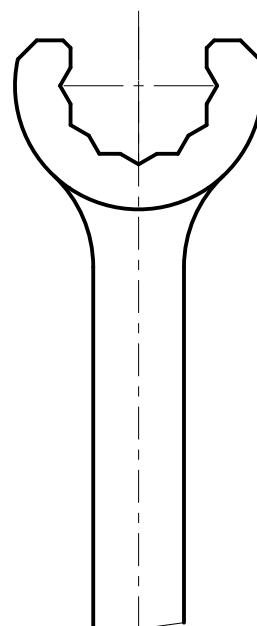
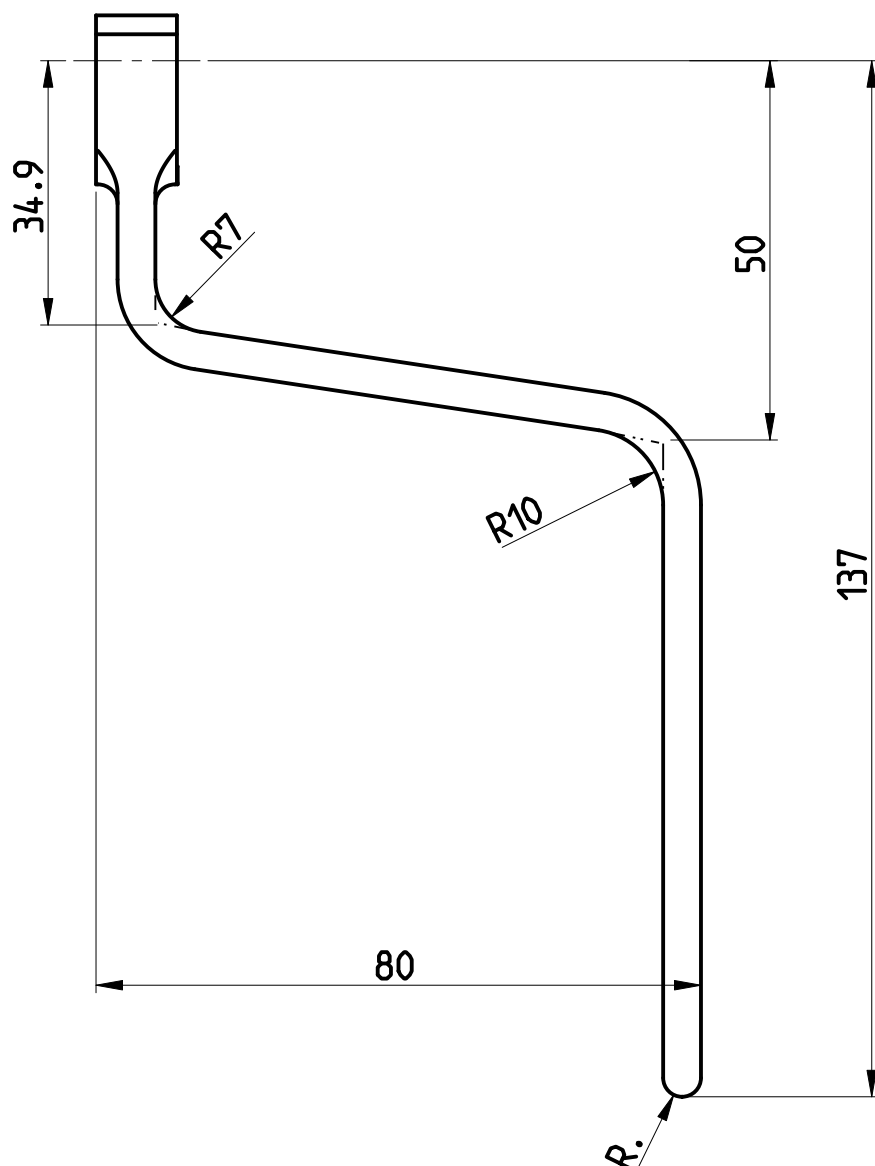
BHARAT HEAVY ELECTRICALS LTD.
RANIPUR, HARDWAR

	NAME	SIGN	DATE	NO. OF VAR
DRN	HARENDRA	Sd/-	07.11.17	
CHD	RAHUL	Sd/-	09.12.17	-
APPD	SK.SINGH	Sd/-	11.12.17	

Inventory No.	DEPT DPE	SCALE	WEIGHT (KG)	REF. TO ASSY. DRG.	ITEM No.	NO. OF ITEMS
	CODE 4260	N.T.S.	0.065	07829718011	24	-
	TITLE : PIN PUNCH			CARD CODE	DRAWING NO. 47829712233	
	SRGM 76/62			-	SHEET No. 01 No. OF SHEETS 01	

A4 SIZE

ATTENZIONE MODELLO C.A.D. - ogni modifica deve essere eseguita direttamente sul modello C.A.D. originale
WARNING C.A.D. MODEL - every change must be done directly on the original C.A.D. model



RICAVARE DA CHIAVE 285-L 15 USAG
OBTAINED WRENCH 285 L 15 USAG

MATERIALE / MATERIAL

TOLLERANZE GENERALI
GENERAL TOLERANCES

ISO 2768-mk

TRATTAMENTO / TREATMENT

PROTEZIONE / PROTECTION

VERNICIATURA / PAINTING

SMUSSI NON QUOTATI
NOT DIMENSIONED CHAMFER

RAGGI NON QUOTATI
NOT DIMENSIONED RADIUS

OTO-RS-8.1

0.3x45°

0.3

N° REV. REV. NUM.	NUMERO ORDINE DI MODIFICA CHANGE ORDER NUMBER	DESCRIZIONE REVISIONE REVISION DESCRIPTION	DATA REVISIONE REVISION DATE
0	W.A.1010610	PRIMA EMISSIONE FIRST ISSUE	06-12-1990
1	ECN32960	AGGIORNATE NOTE NOTE UPDATED	14-05-2013
DISEGNATO DA PREPARED BY	CONTROLLATO DA CHECKED BY	APPROVATO DA APPROVED BY	PESO (kg) WEIGHT (kg)
A.bernardini	C.buccianti	A.bruschi	0.0
STATO DEL DOCUMENTO DOCUMENT STATUS			FORMATO DIS. DWG. SIZE
RILASCIATO ISSUED			A4
CL. MERC. Q. Q. COMM. CL.			SCALA SCALE
LIV. CRIT. CRIT. LEV.			1:1
CAGE CODE			FOGLIO/FOGLI SHEET/SHEETS
NUMERO DISEGNO / DRAWING NUMBER			1/1
REVISIONE REVISION			
Y 3 A0199 1576-97-420			
1			



OTO Melara

A Finmeccanica Company

Documento non pubblicato. Copyright OTO MELARA S.p.A. Tutti i diritti riservati.

Unpublished document. Copyright OTO MELARA S.p.A. All rights reserved.

1. SCOPE

This specification pertains to **Hand operated Grease Gun along with accessories** intended for use with grease for general-purpose application.

2. FEATURES

- Portable
- Hand operated
- Lever type with screw down follower mechanism
- Steel or light alloy construction
- Chrome plated
- Durable & long lasting



3. SPECIFICATIONS

SN.	PARAMETERS	VALUES	UNIT
1	OPERATION	MANUAL (HAND OPERATED)	-
2	TYPE	LEVER	-
3	LOADING	BULK OR CARTRIDGE	-
4	CAPACITY (max.)	500 (16 oz)	CC (OZ)
5	PRESSURE (max.)	6000	PSI
6	Discharge per stroke (min.)	1	CC
7	Weight	< 2	KG

4. ACCESSORIES

- a. 18 Inch Flexible Whip Hose - 1 no.
- b. Coupler - 1 no.
- c. 6 Inch Rigid extension - 1 no.

5. DOCUMENTATION

Certificate of Conformance (CoC) to be provided.

6. PACKING AND IDENTIFICATION

- a) Items shall be packed such as to:
 - (i). Prevent ingress of moisture & dust.
 - (ii). Prevent damage during transit and storage.
- b) Each box shall be labeled regarding its content along with Purchase Order (PO) Details, PO. Item no., destination and dispatchers address.

7. COMMERCIAL EQUIVALENTS

SL	MAKE	MODEL NO	REMARKS
1.	SNAP-ON	YA728A	with accessories

1. ALL VENDORS TO PROVIDE POINT WISE REPLY/CONFIRMATION ALONG WITH RELEVANT SUPPORTING DOCUMENTS TO EACH AND EVERY POINT OF **PRE-QUALIFICATION REQUIREMENT/PQR** FOR ALL ENQUIRY ITEMS. NONCOMPLIANCE OF THESE MAY LEAD TO REJECTION OF OFFER AS THESE ARE ESSENTIAL CONDITION FOR PARTICIPATING IN TENDER ENQUIRY.
2. EARLY DELIVERY ACCEPTABLE.
3. ALL VENDORS TO PROVIDE POINT WISE REPLY/CONFIRMATION ALONG WITH RELEVANT SUPPORTING DOCUMENTS TO EACH AND EVERY POINT OF **PRE-QUALIFICATION REQUIREMENT/PQR** FOR ALL ENQUIRY ITEMS. NONCOMPLIANCE OF THESE MAY LEAD TO REJECTION OF OFFER AS THESE ARE ESSENTIAL CONDITION FOR PARTICIPATING IN TENDER ENQUIRY.
4. KINDLY UPLOAD/ATTACH THE SPECIFICATION DETAILS/ CATALOGUE OF OFFERED ITEMS.
5. KINDLY **SUBMIT TECHNO-COMMERCIAL CHECKLIST** ALONG WITH YOUR OFFER.
6. KINDLY **SUBMIT PQR SHEET WITH SUPPORTING DOCUMENTS** ALONG WITH YOUR OFFER.
7. VENDOR TO PROVIDE TEST CERTIFICATES AS PER SPECIFIED MANUFACTURER'S STANDARD PRACTICE INCLUDING DOCUMENTS CONFORMING TO ENQUIRY MAKE/MODEL/PART NO. ALONG WITH THE MATERIAL.
8. IN CASE OF EQUIVALENTS OR UNDEFINED MAKE, VENDOR TO PROVIDE ORIGINAL MANUFACTURER'S TEST CERTIFICATES/DOCUMENTS OF TOOLS MEETING ENQUIRY TECHNICAL REQUIREMENT (INCLUDING WRENCH CALIBRATION CERTIFICATES).
9. VENDOR TO PROVIDE CERTIFICATE OF CONFORMANCE.
10. VENDOR TO PROVIDE IDENTIFICATION OF ALL ITEMS AND SUBSEQUENT IDENTIFICATION REPORTS.
11. IF PRICE QUOTED BY MSE VENDOR IS WITHIN THE PRICE BAND OF L1+15%, THEN 25% QUANTITY OF THE RESPECTIVE ITEM (ROUNDED OFF TO NEAREST NUMBER) SHALL BE OFFERED TO MSE VENDOR SUBJECT TO MATCHING THE L1 PRICES.
IF THE QUANTITY REQUIRED IS 1 NUMBER (AS SUCH NON-DIVISIBLE), MSE QUOTING WITH IN PRICE PREFERENCE OF L1+15% SHALL BE OFFERED 100% QUANTITY SUBJECT TO MATCHING THE L1 PRICES
12. MSE/MII: THE SUPPLIER NEEDS TO SUBMIT/UPDATE MSE/MII CREDENTIALS ON GEM PORTAL DURING PROFILE UPDATION/ OFFER SUBMISSION STAGE. THE MSE DATA SUBMITTED IS CROSS VERIFIED BY GEM WITH GOVT. OF INDIA UDYAM/NSIC DATABASE THROUGH API INTEGRATION ON REAL TIME BASIS AND FOR MII, A SELF DECLARATION IS BEING GIVEN AND AUTHENTICATED BY AADHAR OTP. IF THE SELLER FAILS TO CLAIM MSE/MII PROVISION ON GEM PORTAL AT PROFILE UPDATION/BID SUBMISSION STAGE, THE SAID SELLER WILL BECOME INELIGIBLE FOR GETTING THE MSE/MII BENEFITS FOR THAT BID AUTOMATICALLY. THE VENDOR CAN ALWAYS CONTACT THE GEM HELPDESK, IN CASE OF ANY ISSUES.
13. THE PRICE QUOTE BY BIDDER SHOULD BE INCLUSIVE OF GST & SHOULD BE ON BHEL HEEP HARIDWAR STORES BASIS.
14. BIDDER'S OFFER IS LIABLE TO BE REJECTED IF THEY DON'T UPLOAD ANY OF THE CERTIFICATES / DOCUMENTS SOUGHT IN THE BID DOCUMENT, ATC AND CORRIGENDUM IF ANY.
15. **BREACH OF CONTRACT CLAUSE:**

IN CASE OF BREACH OF CONTRACT, WHEREVER THE VALUE OF SECURITY INSTRUMENTS LIKE PERFORMANCE BANK GUARANTEE AVAILABLE WITH BHEL AGAINST THE SAID CONTRACT IS ATLEAST 10% OF THE CONTRACT VALUE, THE SAME BE ENCASHED. IN CASE THE VALUE OF THE SECURITY INSTRUMENTS AVAILABLE IS LESS THAN 10% OF THE CONTRACT VALUE, THE BALANCE AMOUNT BE RECOVERED FROM OTHER FINANCIAL REMEDIES (I.E. AVAILABLE BILLS OF THE CONTRACTOR, RETENTION AMOUNT, ETC. WITH BHEL) OR LEGAL REMEDIES BE PURSUED.

16. ACTION AGAINST BIDDERS / VENDOR / SUPPLIER / CONTRACTOR IN CASE OF DEFAULT:

IN ORDER TO PROTECT THE COMMERCIAL INTERESTS OF BHEL, BHEL SHALL TAKE ACTION AGAINST SUPPLIES / CONTRACTORS BY WAY OF SUSPENSION OF BUSINESS DEALINGS, WHO EITHER FAIL TO PERFORM OR ARE IN DEFAULT WITHOUT ANY REASONABLE CAUSE, CAUSE LOSS OF BUSINESS/ MONEY/ REPUTATION, INDULGE IN MALPRACTICES, CHEATING, BRIBERY, FRAUD OR ANY OTHER MISCONDUCT OR FORMATION OF CARTELS SO AS TO INFLUENCE THE BIDDING PROCESS OR INFLUENCE THE PRICE ETC. SUSPENSION OF BUSINESS DEALINGS COULD BE IN THE FORM OF "HOLD" OR "BANNING" A SUPPLIER/ CONTRACTOR OR A BIDDER AND SHALL BE AS PER "GUIDELINES FOR SUSPENSION OF BUSINESS DEALINGS WITH SUPPLIERS/ CONTRACTORS" AVAILABLE AT BHEL'S WEBSITE <https://www.bhel.com/guidelines-suspension-business-dealings-supplierscontractors>

17. BIDDERS ARE ADVISED TO CHECK APPLICABLE GST ON THEIR OWN BEFORE QUOTING. BUYER WILL NOT TAKE ANY RESPONSIBILITY IN THIS REGARDS. GST REIMBURSEMENT WILL BE AS PER ACTUALS OR AS PER APPLICABLE RATES (WHICHEVER IS LOWER), SUBJECT TO THE MAXIMUM OF QUOTED GST %.

18. BIDDER SHALL SUBMIT THE FOLLOWING DOCUMENTS ALONG WITH THEIR BID FOR VENDOR CODE CREATION:

A. COPY OF PAN CARD B. COPY OF GSTIN C. COPY OF MSE CERIFICATE

19. DEDICATED /TOLL FREE TELEPHONE NO. FOR SERVICE SUPPORT: BIDDER/OEM MUST HAVE DEDICATED/TOLL FREE TELEPHONE NO. FOR SERVICE SUPPORT.

20. DATA SHEET OF THE PRODUCT(S) OFFERED IN THE BID, ARE TO BE UPLOADED ALONG WITH THE BID DOCUMENTS. BUYERS CAN MATCH AND VERIFY THE DATA SHEET WITH THE PRODUCT SPECIFICATIONS OFFERED. IN CASE OF ANY UNEXPLAINED MISMATCH OF TECHNICAL PARAMETERS, THE BID IS LIABLE FOR REJECTION.

21. SCOPE OF SUPPLY (BID PRICE TO INCLUDE ALL COST COMPONENTS): ONLY SUPPLY OF GOODS.

22. PRODUCTS SUPPLIED SHALL BE NONTOXIC AND HARMLESS TO HEALTH. IN THE CASE OF TOXIC MATERIALS, MATERIAL SAFETY DATA SHEET MAY BE FURNISHED ALONG WITH THE MATERIAL.

23. WHILE GENERATING INVOICE IN GEM PORTAL, THE SELLER MUST UPLOAD SCANNED COPY OF GST INVOICE AND THE SCREENSHOT OF GST PORTAL CONFIRMING PAYMENT OF GST.

24. PAYMENT TERMS SHALL BE AS PER FOLLOWINGS:

- a) **FOR NON-MSES BIDDER:** 100% payment along with taxes, freight & insurance will be made after receipt and acceptance of material and within 90 days from the date of invoice subject to submission of non-discrepant documents within 15 days of supply as per terms and conditions of Purchase Order (THIS IS IN SUPERSESSION OF 10 DAYS' TIME AS PROVIDED IN CLAUSE 12 OF GEM GTC).
- b) **FOR MSES BIDDER:** For MSEs (covered under MSME Act) which are registered and periodically renewed with BHEL, the payment will be made within 45 days or as prescribed in the relevant act. Benefits of MSE (such as EMD Waiver, Tender fee exemption, Price preference, Payment preference etc.) will be given only to those MSE Vendors who are manufacturers of offered items against the NIT. No MSE benefits shall be provided to Agents / Stockists /Dealers / Traders etc. for the items offered but not manufactured by themselves."
- c) **FOR MEDIUM ENTERPRISES:** 100% payment along with taxes, freight & insurance will be made after receipt and acceptance of material and within 60 days from the date of invoice subject to submission of non-discrepant documents within 15 days of supply as per terms and conditions of Purchase Order.
- d) Please note that vendor to adhere to the payment terms as per above. No deviation in payment terms shall be accepted. Vendor to submit their offer accordingly.

MAKE IN INDIA SELF CERTIFICATION

As per Government Public procurement order no. P-45021/2/2017-BE-II dt.15.06.2017 & P45021/2/2017-PP(BE-II) dated 28.05.2018,29.5.2019, 04.6.2020 and amendment dated 16.09.2020, it is hereby certifying that we

.....
..... (supplier name) are(Class-I/Class-II)
local supplier and will meet the requirement of minimum local content of
(50%/20%) as defined in public procurement order dated 04.6.2020 for material against Enquiry no.
..... Details of
location at which local value addition will be made is as follows: -

.....
.....
.....

We also understand, false declarations will be in breach of the code of integrity under Rule 175(1)(i)(h) of the General Financial Rules for which a bidder or its successors can be debarred for up to two years as per Rule 151 (iii) of the general financial rules along with such other actions as may be permissible under law.

Note:

As per office order P-45021/102/2019-BE-II-Part (1) (E-50310) Dated 04/03/2021, Bidders can't claim itself as "Class-I local supplier/Class-II local suppliers" by claiming the service such as transportation, insurance, installation, commissioning, training & after sales service support like AMC/CMC etc. as local value addition. Bidder offering imported product will fall under the category of Non-Local supplier.