



**REQUIREMENT OF BRIDGE FIRING VETO GEN. ASSY. & CIC FIRING VETO GEN. ASSY.**

The Heavy Electricals Equipment Plant (HEEP) located in Haridwar, India is one of the major manufacturing plants of Bharat Heavy Electricals Ltd. The core business of HEEP includes design and manufacture of large steam and gas turbines, turbo generators, Defense Items and so on.

Details of items details as below:

SLN	MAT CODE	ITEM DISCREPTION	TOTAL QUANTITY (NOS.)	LOT	LOT QTY (NOS.)	Delivery. Schedule
1	W97045001460	BRIDGE FIRING VETO GEN. ASSY. AS PER P/N-197672021 SIZE: P/N 197672021	28	1 <sup>ST</sup>	16	30-06-2025
2	W97045001460_1	BRIDGE FIRING VETO GEN. ASSY. AS PER P/N-197672021 SIZE: P/N 197672021		2 <sup>ND</sup>	12	30-06-2026
3	W97045001479	CIC FIRING VETO GEN. ASSY. AS PER P/N-197672022 SIZE: P/N 197672022	28	1 <sup>ST</sup>	16	30-06-2025
4	W97045001479_1	CIC FIRING VETO GEN. ASSY. AS PER P/N-197672022 SIZE: P/N 197672022		2 <sup>ND</sup>	12	30-06-2026

1. EARLY DELIVERY IS ACCEPTABLE UPTO 2 MONTHS BEFORE SCHEDULED DELIVERY DATE.
2. ALL VENDORS TO PROVIDE POINT WISE REPLY/CONFIRMATION ALONG WITH RELEVANT SUPPORTING DOCUMENTS TO EACH AND EVERY POINT OF **PRE-QUALIFICATION REQUIREMENT/PQR** FOR ALL ENQUIRY ITEMS. NONCOMPLIANCE OF THESE MAY LEAD TO REJECTION OF OFFER AS THESE ARE ESSENTIAL CONDITION FOR PARTICIPATING IN TENDER ENQUIRY.
3. KINDLY UPLOAD/ATTACH THE SPECIFICATION DETAILS/ CATALOGUE OF OFFERED ITEMS.
4. KINDLY **SUBMIT TECHNO-COMMERCIAL CHECKLIST** ALONG WITH YOUR OFFER.
5. KINDLY **SUBMIT PQR SHEET WITH SUPPORTING DOCUMENTS** ALONG WITH YOUR OFFER.
6. KINDLY **SUBMIT TECHNICAL PARAMETER CHECKLIST** ALONG WITH YOUR OFFER.
7. VENDOR TO CONFIRM TO PROVIDE TEST CERTIFICATES (CONTINUITY/IR TEST & FUNCTIONALITY TEST) AS PER MANUFACTURER'S STANDARD PRACTICE ALONG WITH THE MATERIAL.
8. VENDOR TO CONFIRM TO PROVIDE MATERIAL AND DIMENSIONAL TEST CERTIFICATES AS PER ENQUIRY DRAWING ALONG WITH THE MATERIAL
9. VENDOR TO CONFIRM TO PROVIDE BILL OF MATERIALS ALONG WITH THE MATERIAL
10. VENDOR TO CONFIRM TO PROVIDE CERTIFICATE OF CONFORMANCE ALONG WITH DISPATCH.
11. VENDOR TO CONFIRM TO PROVIDE PACKING AND IDENTIFICATION OF ALL ITEMS AS PER ENQUIRY AND PROVIDE REPORT ACCORDINGLY.

## QUALIFYING CONDITIONS

### QUALIFYING CONDITIONS FOR BRIDGE FIRING VETO GENERAL ASSEMBLY AND CIC FIRING VETO GENERAL ASSEMBLY

Only those vendors should quote:

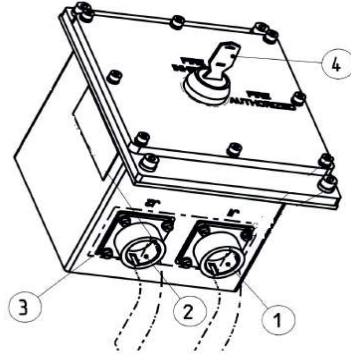
SI.	PQR Requirement	Vendor Response	Vendor Response (Yes / No / Enclosed)
1.	who are manufacturers or authorized dealers/distributors. <b>(Authorized dealers/distributors to submit authorization certificate of manufacturer)</b>	Vendor to inform whether manufacturer or authorized dealer/distributor	
2.	who can manufacture or supply items as per BHEL specification, drawings & BOM.	Vendor to confirm	
3.	BHEL reserves the right to verify information submitted by vendor. In case the information is found to be false/incorrect, the offer shall be rejected.	Vendor to accept & confirm	

**(#): Drawings will be provided after signing of Non-disclosure Agreement.**

**TECHNICAL PARAMETERS RESPONSE - TO BE FILLED BY VENDOR**

ITEM CODE  
DESCRIPTION

W97045001460  
BRIDGE FIRING VETO GEN. ASSY. AS PER PN-197672021

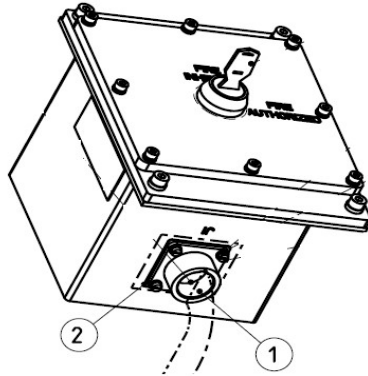


SN.	DESCRIPTION	TECHNICAL PARAMETERS	RESPONSE TYPE	VENDOR RESPONSE
1	ITEM DIMENSIONS & ASSEMBLY	AS PER DRAWING 197672021 & PART DRAWINGS	To confirm →	
2	TOPOGRAPHY	AS PER DRAWING 197672032	To confirm →	
3	MATERIAL OF CONSTRUCTION AND COMPONENTS	AS PER BOM AND PART DRAWINGS, SUITABLE FOR NAVAL APPLICATION (EQUIVALENT MATERIAL WITH BHEL PERMISSION.)	To confirm →	
4	PACKING	ITEM TO BE PACKED IN INDIVIDUAL PACKET SUITABLE FOR ROAD TRANSPORT AND LONG STORAGE WITHOUT DAMAGE TO ITEM AND NO WATER INGRESS.	To confirm →	
5	TEST CERTIFICATES	(CONTINUITY/IR TEST, FUNCTIONALITY TEST AS PER MANUFACTURER'S STANDARD PRACTICE).	To confirm →	
6	CERTIFICATE OF CONFORMANCE (COC) SHALL BE SUBMITTED BY VENDOR	-	To confirm →	
7	VENDOR REMARKS: Vendor to give here details of quoted item and deviations, if any.			
	Specify the Make >>			
	Deviation, if any >>			

**TECHNICAL PARAMETERS RESPONSE - TO BE FILLED BY VENDOR**

ITEM CODE  
DESCRIPTION

W97045001479  
CIC FIRING VETO GEN. ASSY. AS PER PN-197672022



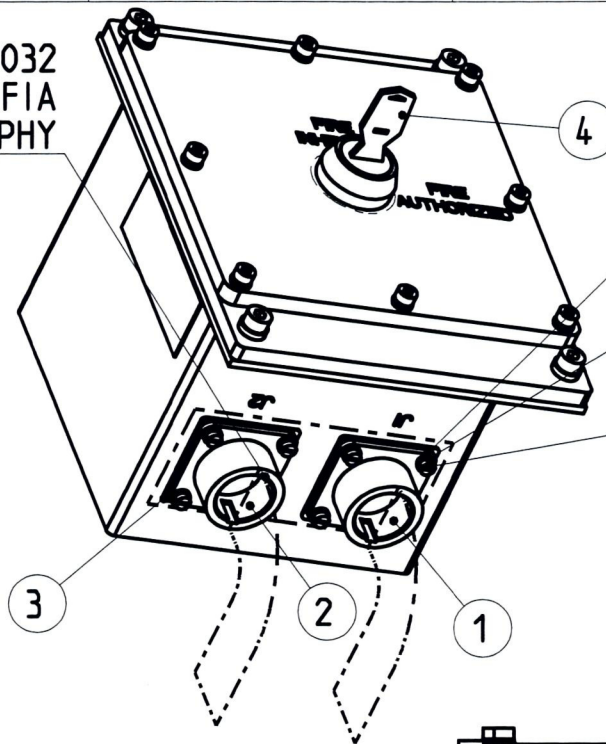
SN.	DESCRIPTION	TECHNICAL PARAMETERS	RESPONSE TYPE	VENDOR RESPONSE
1	ITEM DIMENSIONS & ASSEMBLY	AS PER DRAWING 197672022 & PART DRAWINGS	To confirm →	
2	TOPOGRAPHY	AS PER DRAWING 197672028	To confirm →	
3	MATERIAL OF CONSTRUCTION AND COMPONENTS	AS PER BOM AND PART DRAWINGS, SUITABLE FOR NAVAL APPLICATION (EQUIVALENT MATERIAL WITH BHEL PERMISSION.)	To confirm →	
4	PACKING	ITEM TO BE PACKED IN INDIVIDUAL PACKET SUITABLE FOR ROAD TRANSPORT AND LONG STORAGE WITHOUT DAMAGE TO ITEM AND NO WATER INGRESS.	To confirm →	
5	TEST CERTIFICATES	(CONTINUITY/IR TEST, FUNCTIONALITY TEST AS PER MANUFACTURER'S STANDARD PRACTICE).	To confirm →	
6	CERTIFICATE OF CONFORMANCE (COC) SHALL BE SUBMITTED BY VENDOR	-	To confirm →	
7	VENDOR REMARKS: Vendor to give here details of quoted item and deviations, if any.			
	Specify the Make >> Deviation, if any >>			

## TECHNO-COMMERCIAL CHECKLIST

SL. NO.	TERMS & CONDITION	VENDOR CONFIRMATION /REMARKS / REPLY																												
<b>TENDER DETAILS</b>																														
1	BIDDER NAME																													
2	GEM BID NO																													
<b>QUALITY &amp; TECHNICAL REQUIREMENTS</b>																														
3	ATTACH FOLLOWING DOCUMENTS DULY FILLED, SIGNED & STAMPED ALONG WITH OFFER: PQR SHEET TECHNICAL PARAMETER CHECKLIST SIGNED & STAMPED ENQUIRY DRAWINGS TECHNO-COMMERCIAL CHECKLIST																													
4	VENDOR TO CONFIRM TO PROVIDE TEST CERTIFICATES (CONTINUITY/IR TEST & FUNCTIONALITY TEST) AS PER MANUFACTURER'S STANDARD PRACTICE ALONG WITH THE MATERIAL																													
5	VENDOR TO CONFIRM TO PROVIDE MATERIAL AND DIMENSIONAL TEST CERTIFICATES AS PER ENQUIRY DRAWING ALONG WITH THE MATERIAL																													
6	VENDOR TO CONFIRM TO PROVIDE BILL OF MATERIALS ALONG WITH THE MATERIAL																													
7	VENDOR TO CONFIRM TO PROVIDE CERTIFICATE OF CONFORMANCE ALONG WITH DISPATCH																													
8	VENDOR TO CONFIRM TO PROVIDE PACKING AND IDENTIFICATION OF ALL ITEMS AS PER ENQUIRY AND PROVIDE REPORT ACCORDINGLY																													
<b>COMMERICAL REMARKS</b>																														
9	<p>VENDOR TO CONFIRM DELIVERY SCHEDULE AS PER TABLE:</p> <table border="1" style="width: 100%; border-collapse: collapse;"> <thead> <tr> <th style="text-align: center;">SLN</th> <th style="text-align: center;">MAT CODE</th> <th style="text-align: center;">QUANTITY (NOS.)</th> <th style="text-align: center;">Lot No.</th> <th style="text-align: center;">Lot Qty.</th> <th style="text-align: center;">Dly. Schedule</th> </tr> </thead> <tbody> <tr> <td style="text-align: center;">1</td> <td>W97045001460</td> <td rowspan="2" style="text-align: center;">28</td> <td style="text-align: center;">1</td> <td style="text-align: center;">16</td> <td style="text-align: center;">30-06-2025</td> </tr> <tr> <td style="text-align: center;">2</td> <td>W97045001460_1</td> <td style="text-align: center;">2</td> <td style="text-align: center;">12</td> <td style="text-align: center;">30-06-2026</td> </tr> <tr> <td style="text-align: center;">3</td> <td>W97045001479</td> <td rowspan="2" style="text-align: center;">28</td> <td style="text-align: center;">1</td> <td style="text-align: center;">16</td> <td style="text-align: center;">30-06-2025</td> </tr> <tr> <td style="text-align: center;">4</td> <td>W97045001479_1</td> <td style="text-align: center;">2</td> <td style="text-align: center;">12</td> <td style="text-align: center;">30-06-2026</td> </tr> </tbody> </table>	SLN	MAT CODE	QUANTITY (NOS.)	Lot No.	Lot Qty.	Dly. Schedule	1	W97045001460	28	1	16	30-06-2025	2	W97045001460_1	2	12	30-06-2026	3	W97045001479	28	1	16	30-06-2025	4	W97045001479_1	2	12	30-06-2026	
SLN	MAT CODE	QUANTITY (NOS.)	Lot No.	Lot Qty.	Dly. Schedule																									
1	W97045001460	28	1	16	30-06-2025																									
2	W97045001460_1		2	12	30-06-2026																									
3	W97045001479	28	1	16	30-06-2025																									
4	W97045001479_1		2	12	30-06-2026																									
10	ITEM IS TO BE SUPPLIED AS PER ITEM DESCRIPTION/ SPECIFICATION/DRAWING.																													
11	SUBMIT MAKE IN INDIA SELF CERTIFICATION AS PER FORMAT GIVEN ALONG WITH THE ENQUIRY																													
12	KINDLY UPLOAD/ATTACH THE SPECIFICATION DETAILS/ CATALOGUE OF OFFERED ITEMS.																													

13	<p><b>BREACH OF CONTRACT CLAUSE:</b>  IN CASE OF BREACH OF CONTRACT, WHEREVER THE VALUE OF SECURITY INSTRUMENTS LIKE PERFORMANCE BANK GUARANTEE AVAILABLE WITH BHEL AGAINST THE SAID CONTRACT IS ATLEAST 10% OF THE CONTRACT VALUE, THE SAME BE ENCASHED. IN CASE THE VALUE OF THE SECURITY INSTRUMENTS AVAILABLE IS LESS THAN 10% OF THE CONTRACT VALUE, THE BALANCE AMOUNT BE RECOVERED FROM OTHER FINANCIAL REMEDIES (I.E. AVAILABLE BILLS OF THE CONTRACTOR, RETENTION AMOUNT, ETC. WITH BHEL) OR LEGAL REMEDIES BE PURSUED.</p>	
14	<p><b>ACTION AGAINST BIDDERS / VENDOR / SUPPLIER / CONTRACTOR IN CASE OF DEFAULT:</b>  IN ORDER TO PROTECT THE COMMERCIAL INTERESTS OF BHEL, BHEL SHALL TAKE ACTION AGAINST SUPPLIES / CONTRACTORS BY WAY OF SUSPENSION OF BUSINESS DEALINGS, WHO EITHER FAIL TO PERFORM OR ARE IN DEFAULT WITHOUT ANY REASONABLE CAUSE, CAUSE LOSS OF BUSINESS/ MONEY/ REPUTATION, INDULGE IN MALPRACTICES, CHEATING, BRIBERY, FRAUD OR ANY OTHER MISCONDUCT OR FORMATION OF CARTELS SO AS TO INFLUENCE THE BIDDING PROCESS OR INFLUENCE THE PRICE ETC.  SUSPENSION OF BUSINESS DEALINGS COULD BE IN THE FORM OF “HOLD” OR “BANNING” A SUPPLIER/ CONTRACTOR OR A BIDDER AND SHALL BE AS PER “GUIDELINES FOR SUSPENSION OF BUSINESS DEALINGS WITH SUPPLIERS/ CONTRACTORS” AVAILABLE AT BHEL’S WEBSITE “<a href="https://www.bhel.com/guidelines-suspension-business-dealings-supplierscontractors">https://www.bhel.com/guidelines-suspension-business-dealings-supplierscontractors</a>”</p>	
15	REST GENERAL TERMS AND CONDITIONS AS PER GeM	

1 - 032  
TOPOGRAFIA  
TOPOGRAPHY



8 - 2146-78219  
Rosetta 2.7x5 UNI EN ISO 7092  
Washer 2.7x5 UNI EN ISO 7092

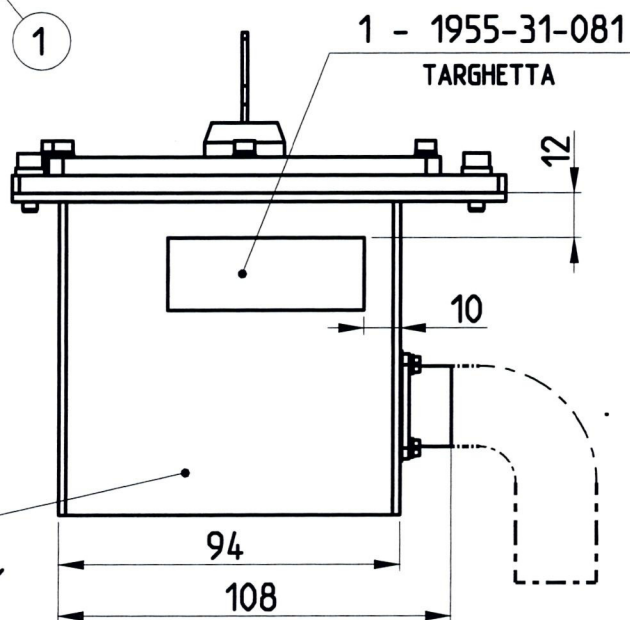
8 - 2108-06438  
Rosetta elastica UNI 1751 B2.5  
Washer UNI 1751 B2.5

8 - 2146-70983  
Vite UNI 6107 M2.5x8  
Screw UNI 6107 M2.5x8

NOTA:  
ORIENTARE IL CAVO VERSO  
IL FONDO DELL'APPARATO

NOTE:  
ORIENTATE THE CABLE TO  
THE BOX BOTTOM

1 - 031  
ASS. MECC. BRIDGE FIRING VETO  
BRIDGE FIRING VETO MECH. ASS. Y



1 - 1955-31-081  
TARGHETTA

MATERIALE / MATERIAL

TOLLERANZE GENERALI  
GENERAL TOLERANCES

ISO 22768-v

TRATTAMENTO / TREATMENT

PROTEZIONE / PROTECTION

VERNICIATURA / PAINTING

SMUSSI NON QUOTATI  
NOT DIMENSIONED CHAMFER

RAGGI NON QUOTATI  
NOT DIMENSIONED RADIUS

0.3x45°

0.3

eccetto dove indicato tutte le quote tollerate sono da intendersi dopo trattamento e/o protezione  
except where it is specified, all the drawing tolerances have to be considered after treatment and/or protection

N° REV. REV. NUM.	NUMERO ORDINE DI MODIFICA CHANGE ORDER NUMBER	DESCRIZIONE REVISIONE REVISION DESCRIPTION	DATA REVISIONE REVISION DATE
0	E.C.N. 37133	PRIMA EMISSIONE FIRST ISSUE	11-03-2016
1	ECN 39021	AGGIUNTA NOTA ADDED NOTE	26-05-2016

DISEGNATO DA PREPARED BY	CONTROLLATO DA CHECKED BY	APPROVATO DA APPROVED BY	ASS.GEN.BRIDGE FIRING VETO - BRIDGE FIRING VETO GEN ASS. Y -	PESO (kg) WEIGHT (kg)	FORMATO DIS. DWG. SIZE
G.MICHELA	P.MIRABELLI	L.BIAGIONI		0.0	A4
STATO DEL DOCUMENTO DOCUMENT STATUS				SCALA SCALE	
RILASCIATO ISSUED				1:2	

**FINMECCANICA**  
DIVISIONE SISTEMI DI DIFESA

CL. MERC. O Q.COMM. CL.	LIV. CRIT. CRIT. LEV.	CAGE CODE	NUMERO DISEGNO / DRAWING NUMBER	REVISIONE REVISION	FOGLIO/FOGLI SHEET/SHEETS
N	2	A0199	1976-72-021	1	1/1
RQA-0001					

Il simbolo  $\Delta$  contenente il numero 1 o 2 identifica una caratteristica chiave che deve essere tracciata in accordo alla RQA0001  
The symbol  $\Delta$  with number 1 or 2 identifies a key feature that must be traceable in accordance with RQA0001

Eccetto dove indicato le specifiche tecniche richiamate a disegno sono da intendersi all'ultima revisione  
Except where it is specified, all the quoted technical specifications are in the last available revision

Documento non pubblicato. Copyright FINMECCANICA - Societa' per azioni. Tutti i diritti riservati.

Unpublished document. Copyright FINMECCANICA - Limited Company. All rights reserved.

0

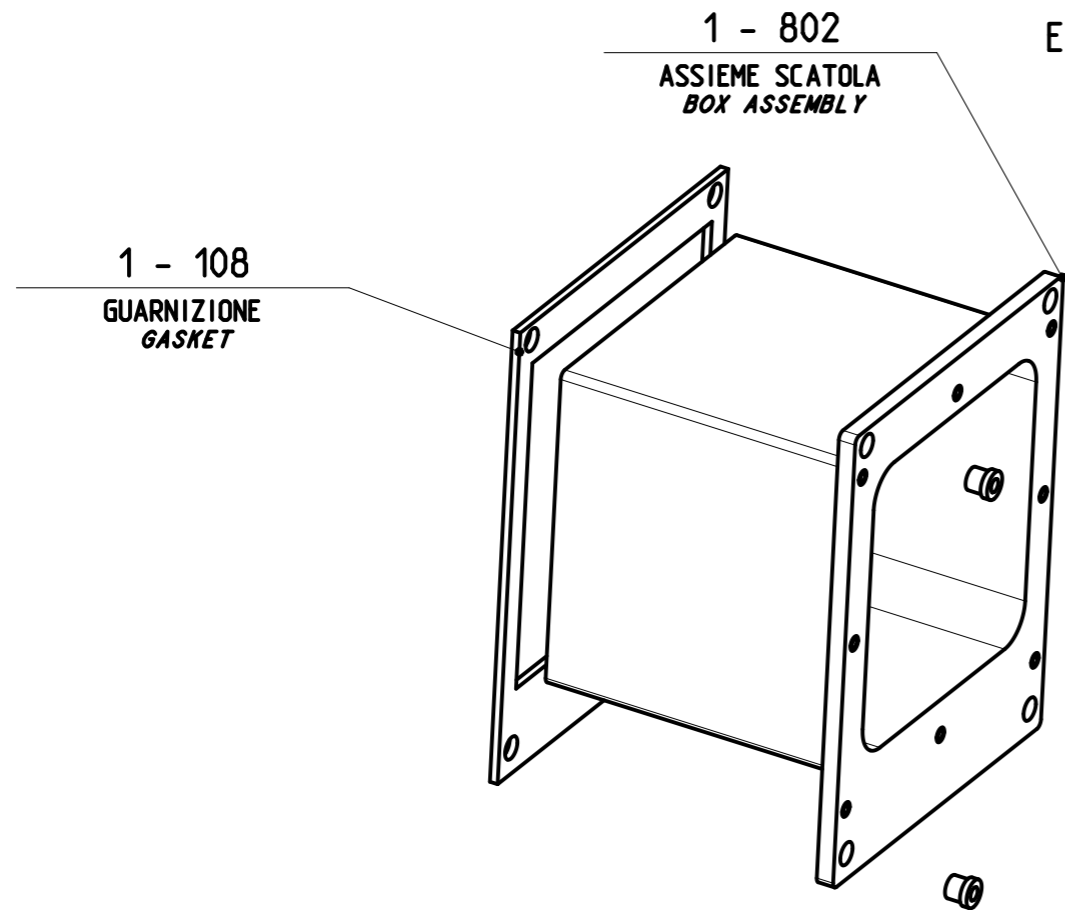
100

Ogni modifica deve essere eseguita direttamente sul modello C.A.D. originale  
Every change must be done directly on the original C.A.D. model

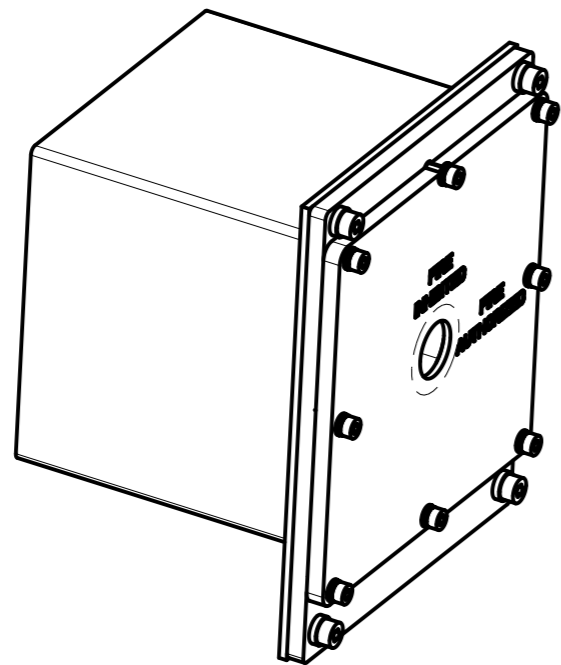
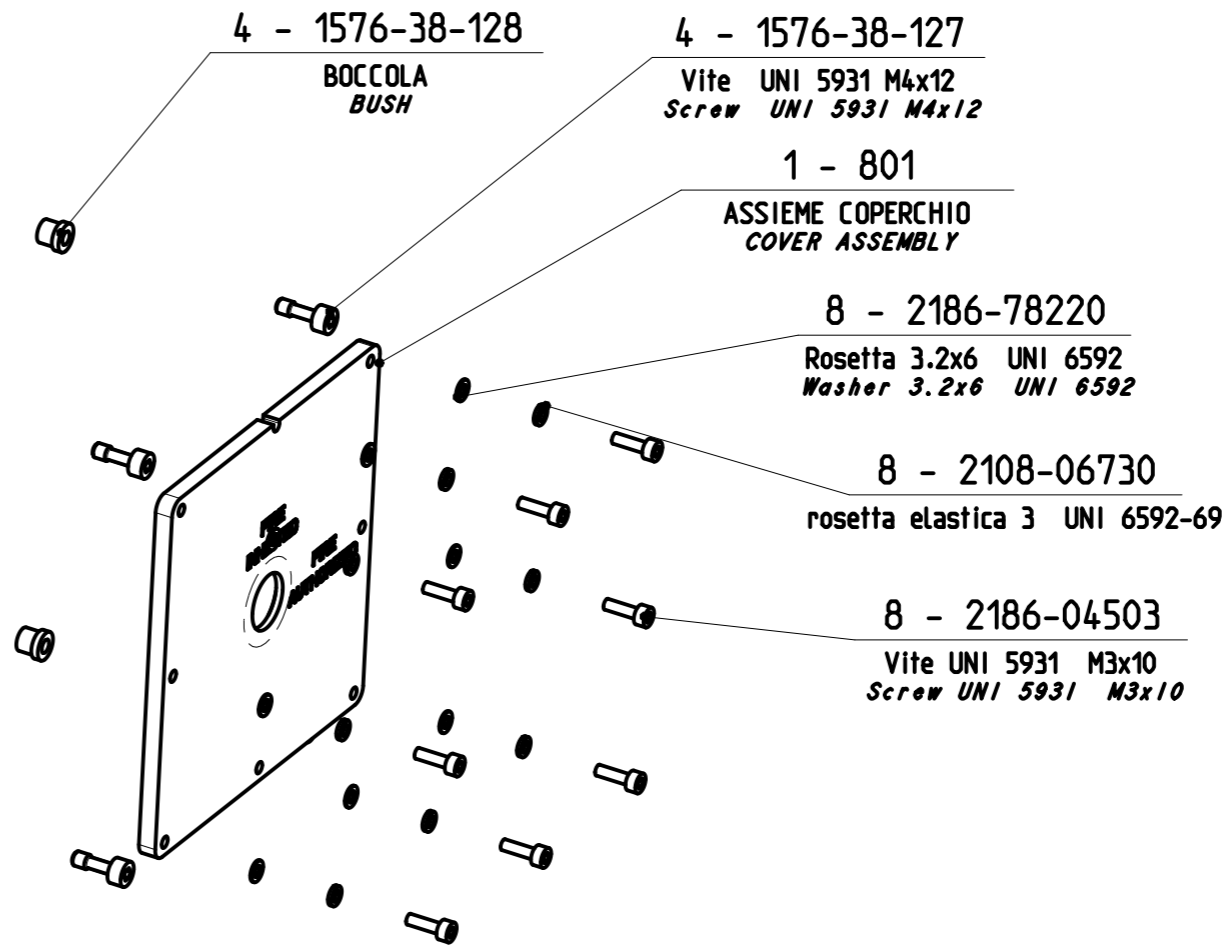
Bill Of Material for Part No-197672021

Level	Item	N.Parte/Doc (Part Number)	Rif	Description	Material	Treatment	Quantity	Commercial Code	Manufacturer(For ref. only)
0	P	197672021		GEN.ASS.BRIDGE FIRING VETO					
1	P	810BA0369	2	CONN. MS3470W14-5S			1.0/ea	MS3470W14-5S	QPL-26482 (QPD)
1	P	810BA0368	1	CONN. MS3470W14-5P			1.0/ea	MS3470W14-5P	QPL-26482 (QPD)
1	P	210806438		Spring washer UNI 1751 B2.5	UNI 3545/80 RECOVERED (44/49 HRC)		8.0/ea		
1	P	197672032		TOPOGRAPHICAL BRIDGE UNIT			1.0/ea		
2	P	890AN0037	2	PLATE			8.0/ea	TC817-TB	ABB
2	P	815UN0023	1	CONDUCTOR			1.0/ME	M22759/16-16-9 , M22759/16-16-9 (E)	NAV-00-00B000 , QPL-AS22759
2	P	890AN0004	3	CABLE TIE			16.0/ea	MS3367-4-9	QPL-AS23190-1 (QPD)
1	P	197672031		ASS. MEC. BRIDGE FIRING VETO			1.0/ea		
2	P	197672108		GASKET	SEE NOTE		1.0/ea		
2	P	210806730		elastic washer 3 UNI 6592-69			8.0/ea		
2	P	157638127		CAPTIVE SCREW			4.0/ea		
2	P	210606403		UNI1751 A4.3 WASHER	X5CrNi1810 UNI7323/8	Passivation	4.0/ea		
2	P	197672801		COVER ASSEMBLY			1.0/ea		
3	P	197672101		COVER	Alloy EN AW-5083 Al Mg 4.5 Mn 0.7 O, H111,H116, H22/H32, H12, H14 EN 485-2		1.0/ea		
3	P	157638128		BUSHING			4.0/ea		
3	P	157632210		GASKET			1.0/ea		
2	P	157638128		BUSHING			4.0/ea		
2	P	218604503		UNI 5931 M3x10 screw	X5 CrNi 1810 UNI EN ISO 3506		8.0/ea		
2	P	218678220		Washer 3.2x6 UNI EN ISO 7092	STEEL/STEEL 200 HV - A2 (HARDNESS/HARDNESS 200~300 HV)		8.0/ea		
2	P	197672802		BOX ASSEMBLY			1.0/ea		
3	P	210002500		Added thread M2.5(x0.45)x1 d	AUSTENITIC 18/8 STAINLESS STEEL	Passivation	8.0/ea		
3	P	210002501		Added thread M3(x0.5)x1 d	AUSTENITIC 18/8 STAINLESS STEEL	Passivation	8.0/ea		
3	P	197672102		BOX	Alloy EN AW-5083 Al Mg 4.5 Mn 0.7 O, H111,H116, H22/H32, H12, H14 EN 485-2		1.0/ea		
3	P	210002533		Heli-coil M4(x0.7)x1.5 d	AUSTENITIC 18/8 STAINLESS STEEL		4.0/ea		
1	P	821VN5450	4	SWITCH			1.0/ea	A165K-T2ML-2A16S-2N-2	OMRON
1	P	811GU0058	3	GASKET VG95234DA14SL-2			2.0/ea	VG96940-06A003A	VG 95212 (LZB) (ex. P.Q.O.-10-4)
1	P	195531081		PLATE			1.0/ea		
2	P	821VN5091		PLATE			1.0/ea	Y4258709	BRADY
1	P	214678219		Washer 2.7x5 UNI EN ISO 7092	STEEL/STEEL 200 HV - A4 (HARDNESS/HARDNESS 200~300 HV)		8.0/ea		
1	P	214670983		UNI 6107 M2.5x8 screw	X5 CrNiMo 1712 UNI-EN-ISO 3506		8.0/ea		
		###END OF FILE###						###END OF FILE###	

Ogni modifica deve essere eseguita direttamente sul modello C.A.D. originale  
Every change must be done directly on the original C.A.D. model

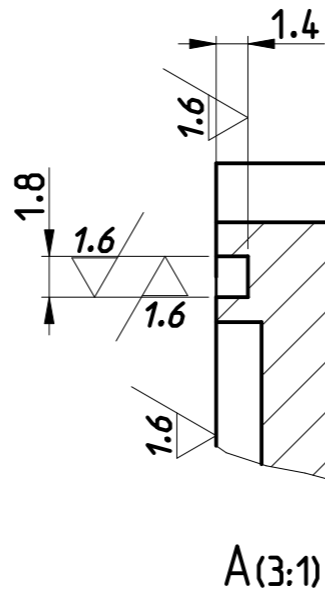
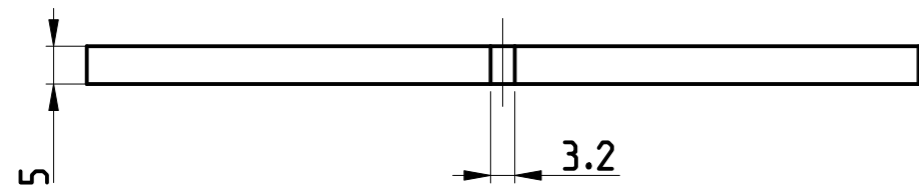
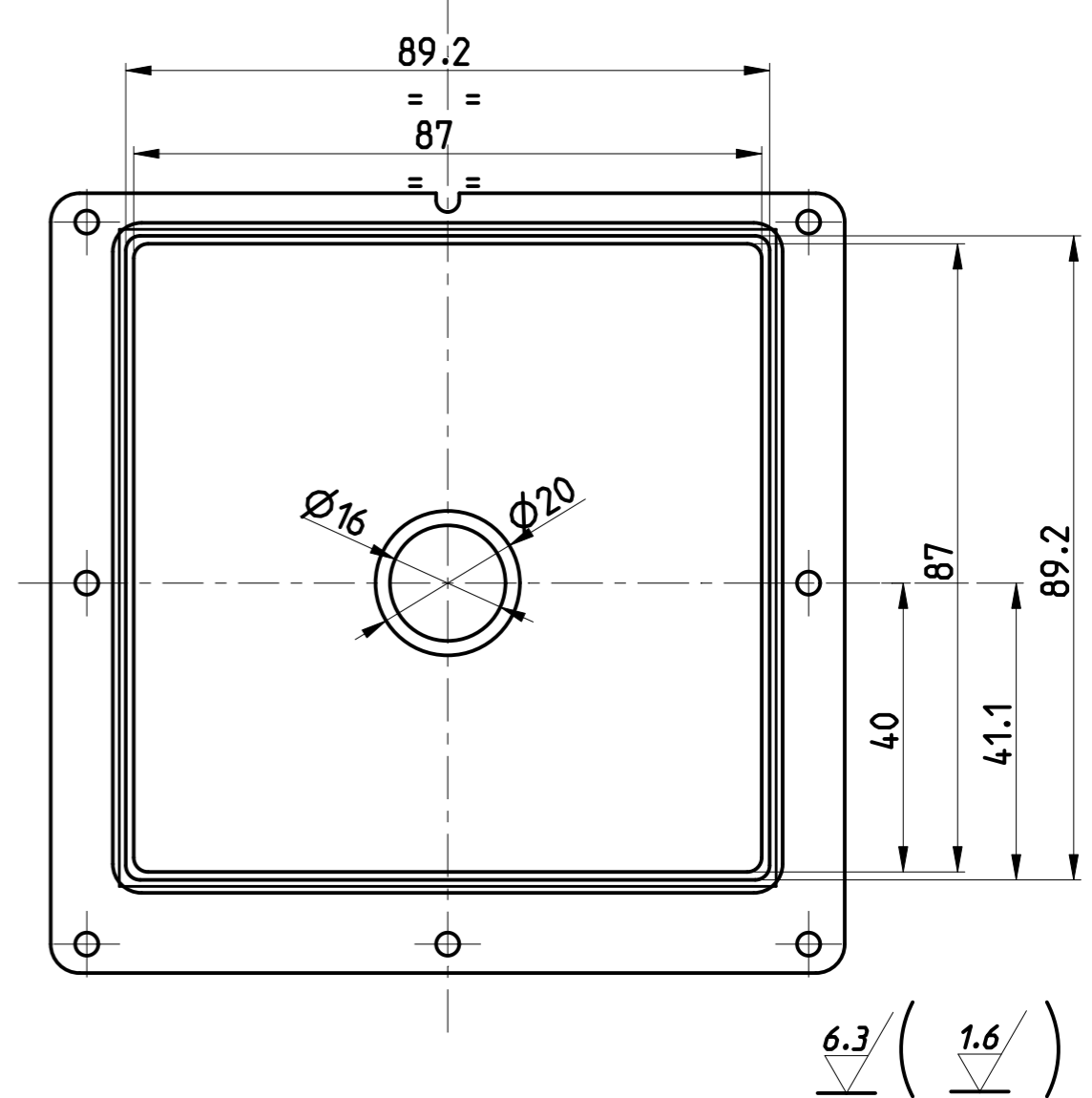
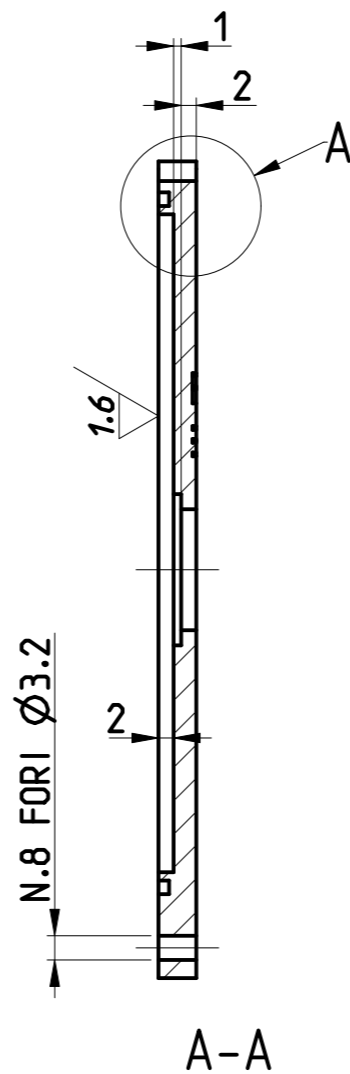
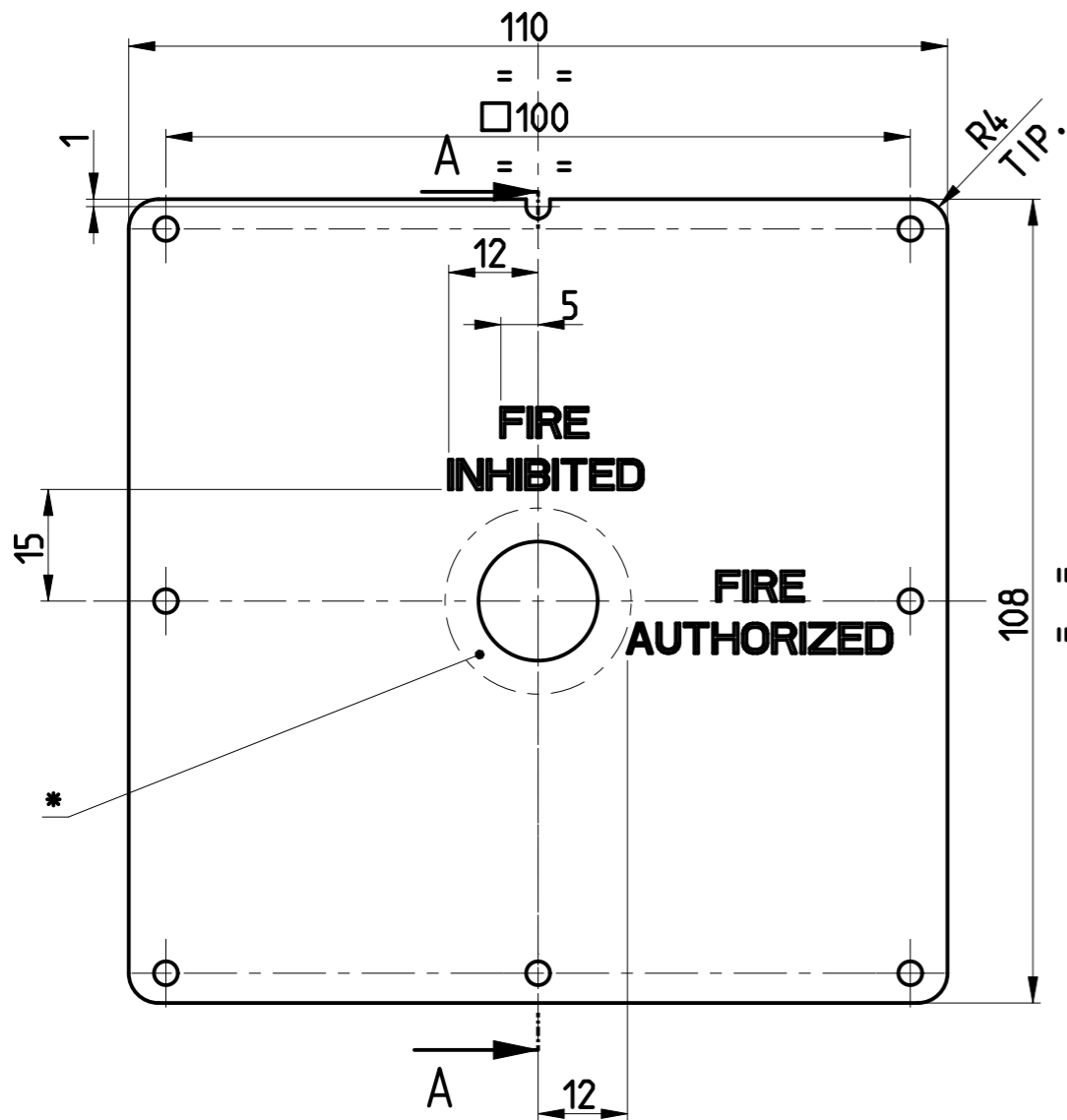


EXPLODED VIEW



MATERIALE / MATERIAL				TOLLERANZE GENERALI GENERAL TOLERANCES	
				ISO 22768-v	
TRATTAMENTO / TREATMENT	PROTEZIONE / PROTECTION	VERNICIATURA / PAINTING	SMUSSI NON QUOTATI NOT DIMENSIONED CHAMFER	RAGGI NON QUOTATI NOT DIMENSIONED RADIUS	
			0.3x45°	0.3	
eccetto dove indicato tutte le quote tolleranze sono da intendersi dopo trattamento e/o protezione except where it is specified, all the drawing tolerances have to be considered after treatment and/or protection					
N° REV. REV.NUM.	NUMERO ORDINE DI MODIFICA CHANGE ORDER NUMBER	DESCRIZIONE REVISIONE REVISION DESCRIPTION			DATA REVISIONE REVISION DATE
0	E.C.N. 37133	PRIMA EMISSIONE FIRST ISSUE			11-03-2016
DISEGNATO DA PREPARED BY	CONTROLLATO DA CHECKED BY	APPROVATO DA APPROVED BY	ASS. MECC. BRIDGE FIRING VETO - BRIDGE FIRING VETO MECH. ASS.Y		PESO (kg) WEIGHT (kg)
G.MICHELA	P.MIRABELLI	L.BIAGIONI			0.0
STATO DEL DOCUMENTO DOCUMENT STATUS					FORMATO DIS. DWG. SIZE
RILASCIATO ISSUED					A3
					SCALA SCALE
					1:2
			CL.MERC. & LIV. CRIT. & COMM. CL. CRIT. LEV.	CAGE CODE	NUMERO DISEGNO / DRAWING NUMBER
			N 3	A0199	1976-72-031
			RQA-0001		0
					FOGLIO/FOGLI SHEET/SHEETS
					1/1
Il simbolo $\Delta$ contenente il numero 1 o 2 identifica una caratteristica chiave che deve essere tracciata in accordo alla RQA0001 The symbol $\Delta$ with number 1 or 2 identifies a key feature that must be traceable in accordance with RQA0001					
Eccetto dove indicato le specifiche tecniche richiamate a disegno sono da intendersi all'ultima revisione Except where it is specified, all the quoted technical specifications are in the last available revision					
Documento non pubblicato. Copyright FINMECCANICA - Società per azioni. Tutti i diritti riservati. Unpublished document. Copyright FINMECCANICA - Limited Company. All rights reserved.					

Ogni modifica deve essere eseguita direttamente sul modello C.A.D. originale  
Every change must be done directly on the original C.A.D. model

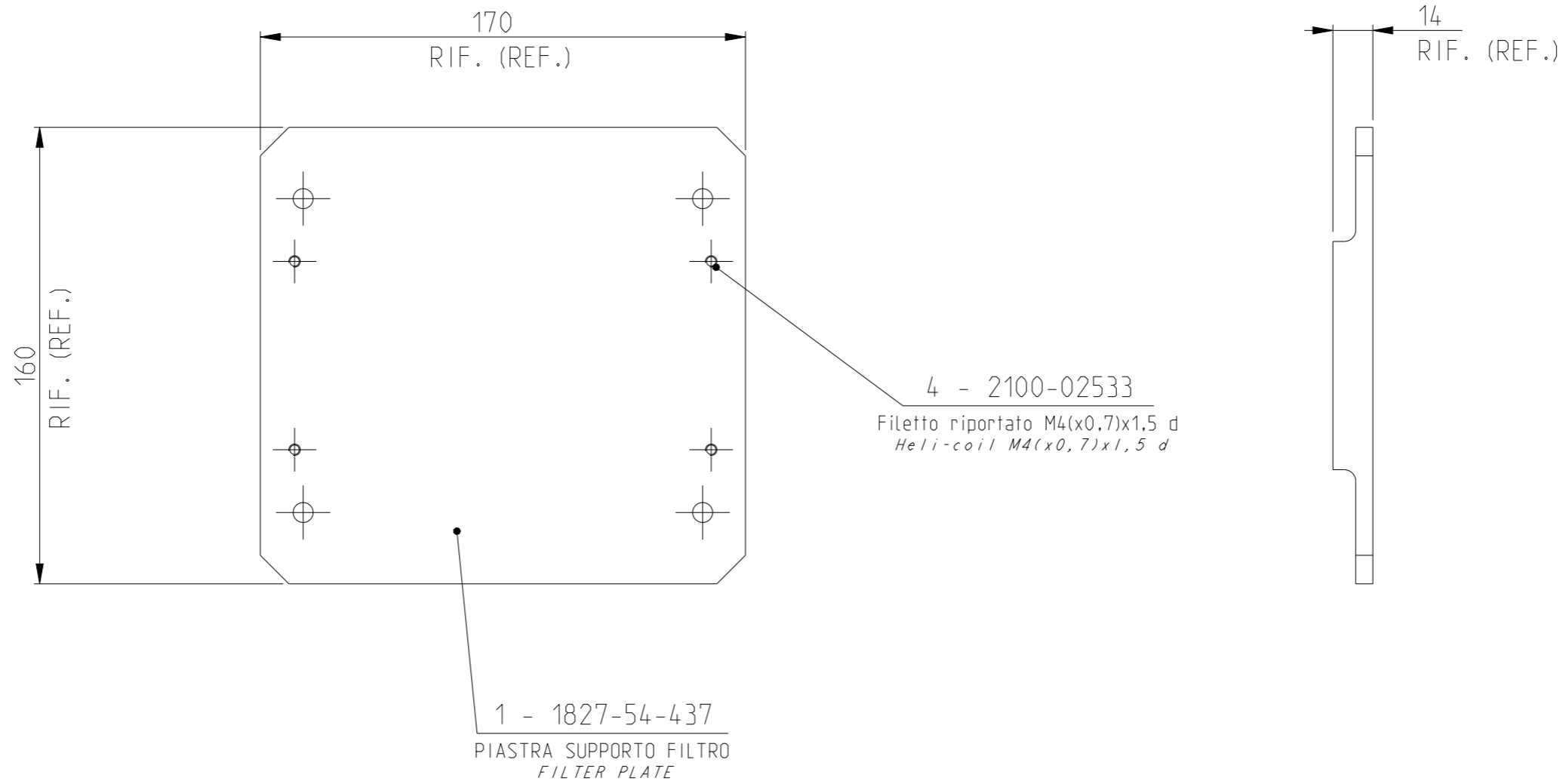


A(3:1)

**VERNICIARE:**  
ESTERNO E BORDI LATERALI. VERNICIARE SECONDO SPEC. OTO-VE-0 PAR.6.2 ALL."A"  
INTERNO, NELLA CAVA DELLA GUARNIZIONE E DOVE INDICATO CON \* SOLO RS4.  
PANTOGRAFARE LE SCRITTE PROFONDITA' 0.5mm  
ALTEZZA 4mm RIEMPIRE CON LACCA

MATERIALE / MATERIAL				TOLLERANZE GENERALI GENERAL TOLERANCES	
Lega EN AW-5083 Al Mg 4.5 Mn 0.7 O, H111,H116, H22/H32, H12, H14 EN 485-2				ISO 22768-m	
TRATTAMENTO / TREATMENT		PROTEZIONE / PROTECTION		VERNICIATURA / PAINTING	
		Rs 4		SMUSSI NON QUOTATI NOT DIMENSIONED CHAMFER	
				0.3x45°	
				RAGGI NON QUOTATI NOT DIMENSIONED RADIUS	
				0.3	
eccetto dove indicato tutte le quote tolleranze sono da intendersi dopo trattamento e/o protezione except where it is specified, all the drawing tolerances have to be considered after treatment and/or protection					
N° REV. REV.NUM.	NUMERO ORDINE DI MODIFICA CHANGE ORDER NUMBER		DESCRIZIONE REVISIONE REVISION DESCRIPTION		DATA REVISIONE REVISION DATE
0	E.C.N. 37133		PRIMA EMISSIONE FIRST ISSUE		09-03-2016
DISEGNATO DA PREPARED BY	CONTROLLATO DA CHECKED BY	APPROVATO DA APPROVED BY	COPERCHIO COVER		PESO (kg) WEIGHT (kg)
6.MICHELA	P.MIRABELLI	L.BIAGIONI			0.0
STATO DEL DOCUMENTO DOCUMENT STATUS					FORMATO DIS. DWG. SIZE
RILASCIATO ISSUED					A3
					SCALA SCALE
					1:1
FINMECCANICA DIVISIONE SISTEMI DI DIFESA			CL.MERC. & LIV. CRIT. & COMM.CL. CRIT. LEV.	CAGE CODE	NUMERO DISEGNO / DRAWING NUMBER
			C 3	A0199	1976-72-101
			RQA-0001		0
					1/1
Il simbolo Δ contenente il numero 1 o 2 identifica una caratteristica chiave che deve essere tracciata in accordo alla RQA0001 The symbol Δ with number 1 or 2 identifies a key feature that must be traceable in accordance with RQA0001					
Eccetto dove indicato le specifiche tecniche richiamate a disegno sono da intendersi all'ultima revisione Except where it is specified, all the quoted technical specifications are in the last available revision					
Documento non pubblicato. Copyright FINMECCANICA - Società per azioni. Tutti i diritti riservati. Unpublished document. Copyright FINMECCANICA - Limited Company. All rights reserved.					

Ogni modifica deve essere eseguita direttamente sul modello C.A.D. originale  
Every change must be done directly on the original C.A.D. model



MATERIALE / MATERIAL					TOLLERANZE GENERALI GENERAL TOLERANCES		
TRATTAMENTO / TREATMENT			PROTEZIONE / PROTECTION	VERNICIATURA / PAINTING	SMUSSI NON QUOTATI NOT DIMENSIONED CHAMFER	RAGGI NON QUOTATI NOT DIMENSIONED RADIUS	
					0.3x45°	0.3	
eccetto dove indicato tutte le quote tollerate sono da intendersi dopo trattamento e/o protezione except where it is specified, all the drawing tolerances have to be considered after treatment and/or protection							
N° REV. REV.NUM.	NUMERO ORDINE DI MODIFICA CHANGE ORDER NUMBER		DESCRIZIONE REVISIONE REVISION DESCRIPTION			DATA REVISIONE REVISION DATE	
0	ECN 48888		PRIMA EMISSIONE FIRST ISSUE			08-06-2020	
DISEGNATO DA PREPARED BY	CONTROLLATO DA CHECKED BY	APPROVATO DA APPROVED BY	PIASTRA INSERTATA 127/64 L.W. VULCANO INSERT PLATE 127/64 L.W. VULCANO			PESO (kg) WEIGHT (kg)	FORMATO DIS. DWG. SIZE
R. DEL NEVO	Bruschi Andrea	Donati Luca				0.6	A3
STATO DEL DOCUMENTO DOCUMENT STATUS			SCALA SCALE				
RILASCIATO ISSUED			1:2				
		CL.MERC.0 Q.COMM.CL.	LIV. CRIT. CRIT. LEV.	CAGE CODE	NUMERO DISEGNO / DRAWING NUMBER	REVISIONE REVISION	FOGLIO/FOGLI SHEET/SHEETS
		M05	3	A0199	1828-54-011	0	1/1
		RQA-0001					
Il simbolo  contenente il numero 1 o 2 identifica una caratteristica chiave che deve essere tracciata in accordo alla RQA0001 The symbol  with number 1 or 2 identifies a key feature that must be traceable in accordance with RQA0001							
Eccetto dove indicato le specifiche tecniche richiamate a disegno sono da intendersi all'ultima revisione Except where it is specified, all the quoted technical specifications are in the last available revision							
Documento non pubblicato. Copyright LEONARDO - Società per azioni. Tutti i diritti riservati. Unpublished document. Copyright LEONARDO - Limited Company. All rights reserved.							

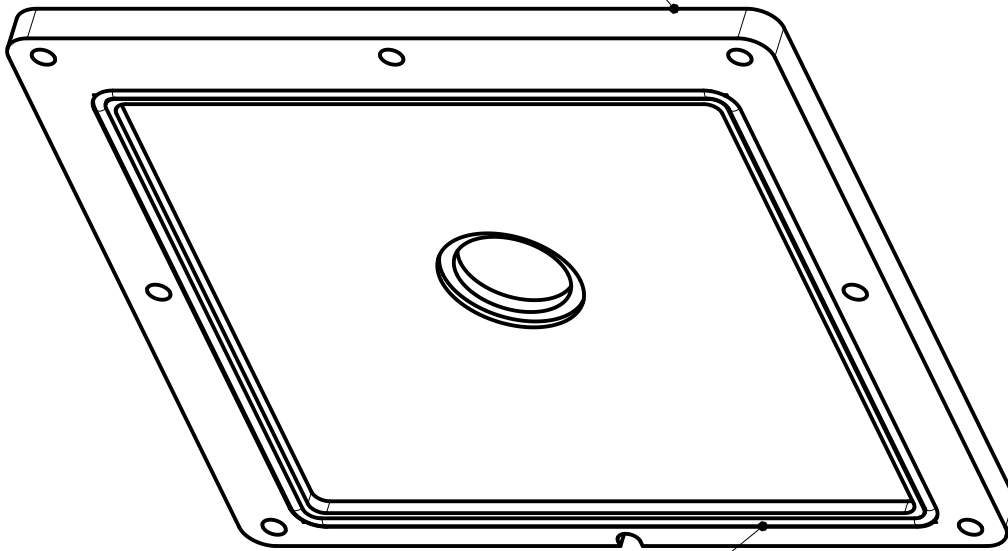
1

2

3

4

1 - 101  
COPERCHIO  
COVER



1 - 1576-32-210  
GUARNIZIONE  
GASKET

Ogni modifica deve essere eseguita direttamente sul modello C.A.D. originale  
Every change must be done directly on the original C.A.D. model

MATERIALE / MATERIAL

TOLLERANZE GENERALI  
GENERAL TOLERANCES

ISO 22768-v

TRATTAMENTO / TREATMENT

PROTEZIONE / PROTECTION

VERNICIATURA / PAINTING

SMUSSI NON QUOTATI  
NOT DIMENSIONED CHAMFERRAGGI NON QUOTATI  
NOT DIMENSIONED RADIUS

0.3x45°

0.3

eccetto dove indicato tutte le quote tolleranze sono da intendersi dopo trattamento e/o protezione

except where it is specified, all the drawing tolerances have to be considered after treatment and/or protection

N° REV. REV. NUM.	NUMERO ORDINE DI MODIFICA CHANGE ORDER NUMBER	DESCRIZIONE REVISIONE REVISION DESCRIPTION	DATA REVISIONE REVISION DATE
0	E.C.N. 37133	PRIMA EMISSIONE FIRST ISSUE	01-03-2016

DISEGNATO DA  
PREPARED BYCONTROLLATO DA  
CHECKED BYAPPROVATO DA  
APPROVED BY

G.MICHELA

P.MIRABELLI

L.BIAGIONI

ASSIEME COPERCHIO

PESO (kg)  
WEIGHT (kg)FORMATO DIS.  
DWG. SIZE

0.0

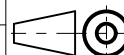
A4

STATO DEL DOCUMENTO  
DOCUMENT STATUS

COVER ASSEMBLY

SCALA  
SCALE

1:1

RILASCIATO  
ISSUED

**FINMECCANICA**  
DIVISIONE SISTEMI DI DIFESA

CL. MERC. 0  
G.COMM.CL. CRIT. LEV.LIV. CRIT.  
CRIT. LEV.

CAGE CODE

NUMERO DISEGNO / DRAWING NUMBER

REVISIONE  
REVISIONFOGLIO/FOGLI  
SHEET/SHEETS

N

3

A0199

1976-72-801

0

1/1

RQA-0001

Il simbolo  $\triangle$  contenente il numero 1 o 2 identifica una caratteristica chiave che deve essere tracciata in accordo alla RQA0001

The symbol  $\triangle$  with number 1 or 2 identifies a key feature that must be traceable in accordance with RQA0001

Eccetto dove indicato le specifiche tecniche richiamate a disegno sono da intendersi all'ultima revisione

Except where it is specified, all the quoted technical specifications are in the last available revision

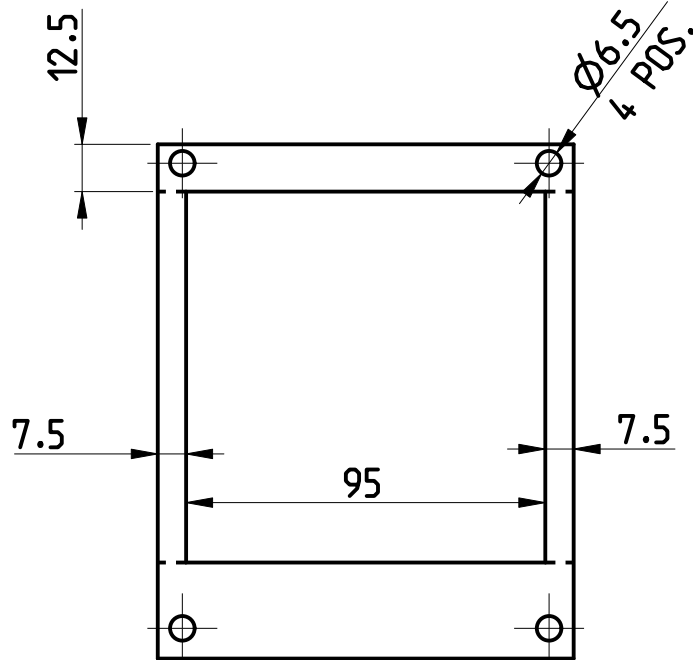
Documento non pubblicato. Copyright FINMECCANICA - Società per azioni. Tutti i diritti riservati.

Unpublished document. Copyright FINMECCANICA - Limited Company. All rights reserved.

0

100

Ogni modifica deve essere eseguita direttamente sul modello C.A.D. originale  
Every change must be done directly on the original C.A.D. model



NOTE:  
 RICAVATO DA COMMERCIO  
 FORNITORE: TECKNIT  
 CODICE DI IDENTIFICAZIONE TECKNIT PART. N. 88-12452  
 DIMENSIONI 25.4mm x Sp. 2.36mm  
 TAGLIARE COME QUOTE INDICATE  
 MATERIALE: ELASTOFOAM ORIENTED WIRES IN SOFT SILICONE SPONGE

MATERIALE / MATERIAL			TOLLERANZE GENERALI GENERAL TOLERANCES	
VEDI NOTA			ISO 22768-m	
TRATTAMENTO / TREATMENT	PROTEZIONE / PROTECTION	VERNICIATURA / PAINTING	SMUSSI NON QUOTATI NOT DIMENSIONED CHAMFER	RAGGI NON QUOTATI NOT DIMENSIONED RADIUS
			0.3x45°	0.3

eccetto dove indicato tutte le quote tollerate sono da intendersi dopo trattamento e/o protezione  
 except where it is specified, all the drawing tolerances have to be considered after treatment and/or protection

N° REV. REV.NUM.	NUMERO ORDINE DI MODIFICA CHANGE ORDER NUMBER	DESCRIZIONE REVISIONE REVISION DESCRIPTION	DATA REVISIONE REVISION DATE
0	E.C.N. 37133	PRIMA EMISSIONE FIRST ISSUE	14-03-2016

DISEGNATO DA PREPARED BY	CONTROLLATO DA CHECKED BY	APPROVATO DA APPROVED BY	GUARNIZIONE - GASKET -	PESO (kg) WEIGHT (kg)	FORMATO DIS. DWG. SIZE
G.MICHELA	P.MIRABELLI	L.BIAGIONI		0.0	A4
STATO DEL DOCUMENTO DOCUMENT STATUS				SCALA SCALE	1:2
RILASCIATO ISSUED					



CL. MERC. & G. COMM. CL. CRIT. LEV.	LIV. CRIT. LEV.	CAGE CODE	NUMERO DISEGNO / DRAWING NUMBER	REVISIONE REVISION	FOGLIO/FOGLI SHEET/SHEETS
C	3	A0199	1976-72-108	0	1/1
RQA-0001					

Il simbolo Δ contenente il numero 1 o 2 identifica una caratteristica chiave che deve essere tracciata in accordo alla RQA0001  
 The symbol Δ with number 1 or 2 identifies a key feature that must be traceable in accordance with RQA0001

Eccetto dove indicato le specifiche tecniche richiamate a disegno sono da intendersi all'ultima revisione  
 Except where it is specified, all the quoted technical specifications are in the last available revision

Documento non pubblicato. Copyright FINMECCANICA - Società per azioni. Tutti i diritti riservati.  
 Unpublished document. Copyright FINMECCANICA - Limited Company. All rights reserved.

NO. U.S.

QUOTE IN TOLLERANZA	
QUOTA E SIMBOLO	LIMITI

0-RING  $\phi$  1,78X400 ~

SOMMA SPEC. MIL-STD-417  
 T8.710 A4. B3. C2-E3. E5. F7. S1. Z.

COMUNANZE				
No.	TIPO	GR.	S.G.	C.T.
4				
5				
6				
7				
8				

R = 0,3 O SMUSSO 0,3x45°  
 DOVE NON INDICATO  
 LE ZONE INDICATE A  
 PREVED. SOPRAMETALLI DA  
 ASPORT. A STRUT. ASSIEMATA

TOLL. GEN. DEI PEZ. GREZZI STAMP. A CALDO  
 QUOTE LIN. ( $\phi$ COMP.) SINO A 18 +0,5 -0,3  
 ) ) ) = 18 A 80 + 1-0,5  
 ) ) ) A 80 + 2-0,8  
 ANGOLI + 1°

TOLL. GENER. DEI PEZZI GREZZI FUSI  
 DIAMETRI E LUNGH.  $\pm$  (0,5% +1MM.)  
 SPESS.  $\pm$  8% (MIN.  $\pm$  0,5 MM)  
 ANGOLI  $\pm$  2°

TOLLERANZE GENERALI DI LAVORAZIONE  
 QUOTE LIN ( $\phi$ COMP.): SINO A 18  $\pm$  0,15  
 ) ) ) A 18 A 80  $\pm$  0,25  
 ) ) ) A 80  $\pm$  0,4  
 ANGOLI  $\pm$  30'

No PART.	DENOMINAZIONE	No PEZZI	MATERIALE	TATTAMENTO	PROTEZIONE	NORMALE
	QUARINIZIONE					
	SOSTITUITO DA	SOSTITUISCE IL	GREZZO Kg.	FINITO Kg.	DISEGN. VISTO	DATA
1						
2						
3						
4						
5						
6						
7						
8						

INDICE E DESCRIZIONE DELLE MODIFICHE

S. P. A. **OTO - MELARA** LA SPEZIA

TITOLO: 76 R

SCALA: /

ORIGINE: 1576-32-921

NO DIS: 1576-32-210-00

TIP. CEE/EN 60714

MANI ESCRITTE IN COPPIA



TOLLERANZE GENERALI DI LAVORAZIONE  
 QUOTE LIN. (ØCOMP.) SINO A 18 ± 0.15  
 > > > > 18 A 80 ± 0.25  
 > > > > 80 ± 0.4  
 ANGOLI ± 30'

TOLL. GENER. DEI PEZZI GREZZI FUSI  
 DIAMETRI E LUNGH. ± (0.5% + 1MM)  
 SPESS. ± 8% (MIN ± 0.5 M.M.)  
 ANGOLI ± 2°

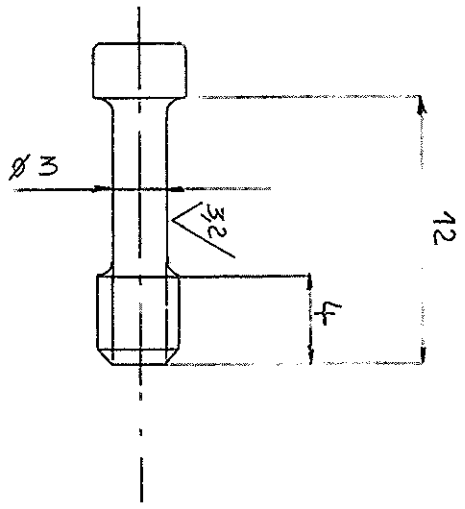
TOLL. GEN. DEI PEZ. GREZZI STAMP A CALDO  
 QUOTE LIN. (ØCOMP.) SINO A 18 + 0.5 - 0.3  
 > > > > 18 A 80 + 1 - 0.5  
 > > > > 80 + 2 - 0.8  
 ANGOLI + 1°

R = 0.3 O SMUSSO 0.3x45°  
 DOVE NON INDICATO  
 LE ZONE INDICATE A  
 PREVED. SOPRAMETALLI DA  
 ASPORT. A STRUT. ASSIEMATA

COMUNANZE					4	1526	38	071
No.	TIPO	GR.	S.G.	C.T.	5			
1	1576	32	071		6			
2	1576	32	043		7			
3	1576	38	044		8			

No. DIS. ....

QUOTE IN TOLLERANZA	QUOTE E SIMBOLO	LIMITI



RICAVATA DA VITE T.C.E.I. M4x12 UNI 5931

No PART.	DENOMINAZIONE	No PEZZI	MATERIALE	TRATTAMENTO	PROTEZIONE	NORMALE
1	VITE CAPTIVA		X8 Cr Ni 1812 UNI 6900		R.S.6.	
	SOSTITUITO DA	SOSTITUISCE IL	GREZZO Kg.	FINITO Kg.	R. M. V.	17-12 88
INDICE E DESCRIZIONE DELLE MODIFICHE						
1						
2						
3						
4						
5						
6						
7						
8						

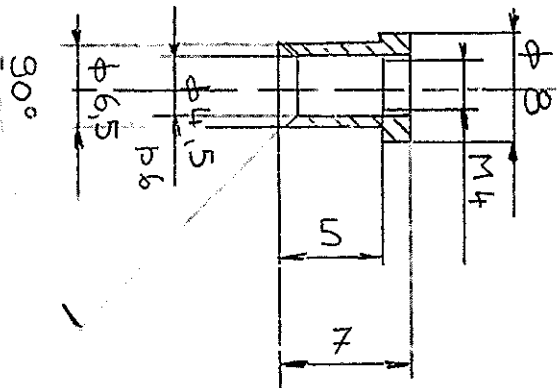
S. P. A.  
**OTO - MELARA**  
 LA SPEZIA  
 TITOLO CASSETTA 21B4  
 No DIS. 1576 - 38 - 127. 00.  
 SCALA / TAVOLA:  
 ORIGINI: 1576 - 32 - 070

TEC. 56460 - 0130 NON MISURARE IN SCALA EUROBIDEL 331777 Milano

TOLLERANZE GENERALI DI LAVORAZIONE QUOTE LIN. (Ø COMP.): SINO A 18 ± 0,15 18 A 80 ± 0,25 80 ± 0,4 ANGOLI ± 30'	TOLL. GENER. DEI PEZZI GREZZI FUSI DIAMETRI E LUNGH.: ± (0,5% + 1MM) SPESS. ± 8% (MIN ± 0,5 MM) ANGOLI ± 2°	TOLL. GEN. DEI PEZ. GREZZI STAMP A CALDO QUOTE LIN. (Ø COMP.) SINO A 18 + 0,5 - 0,3 18 A 80 + 1 - 0,5 80 + 2 - 0,8 ANGOLI + 1°	R = 0,3 O SMUSSO 0,3x45° DOVE NON INDICATO					COMUNANZE					
			No.	TIPO	GR.	S.G.	C.T.	4	1576	38	903		
			1	1576	32	925		5					
			LE ZONE INDICATE A					6					
			PREVED. SOPRAMETALLI DA					7					
			ASPORT. A STRUT. ASSIEMATA					8					

No. DIS.

QUOTE IN TOLLERANZA	
QUOTA E SIMBOLO	LIMITI



No. PART.	DENOMINAZIONE	No. PEZZI	MATERIALE	TRATTAMENTO	PROTEZIONE	NORMALE
	BOCOLA CAPTIVA		X 8 Cr Ni 1812 UNI 6900		R. S. 6	
	SOSTITUITO DA	SOSTITUISCE IL	GREZZO Kg.	FINITO Kg.		
INDICE E DESCRIZIONE DELLE MODIFICHE						
1					DISIGN.	DATA
2					VISTO	NO
3						
4						
5						
6						
7						
8						

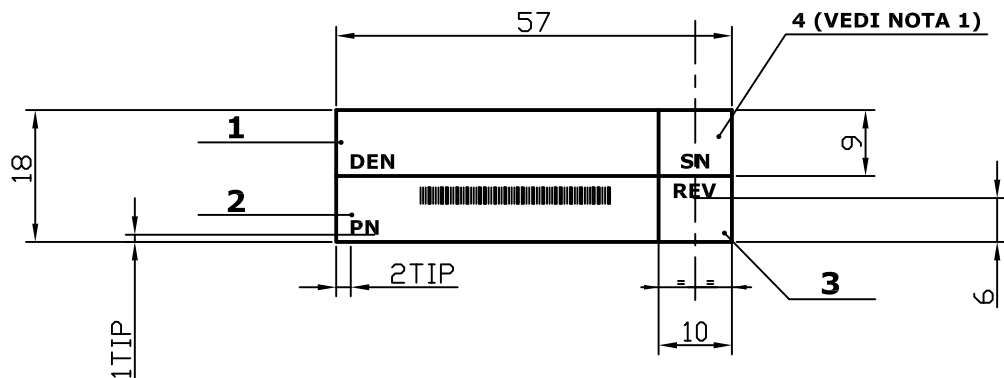
S.P.A.	TITOLO	SCALA	ORIGINE:
<b>OTO - MELARA</b>	C.A.S. 25 B4	1	1576-38-32-921
LA SPEZIA			
No. DIS.	1576-38-128.00		

TEC. 56460 - 0130

NON MISURARE IN SCALA

EuroRidel SpA Milano

ATTENZIONE MODELLO C.A.D. - ogni modifica deve essere eseguita direttamente sul modello C.A.D. originale  
WARNING C.A.D. MODEL - every change must be done directly on the original C.A.D. model



UTILIZZARE LA TARGHETTA 821VN5091 E RIEMPIRE I CAMPI COME INDICATO  
DI SEGUITO CON ALTEZZA CARATTERI 2 MM :

- CAMPO 1 DENOMINAZIONE
- CAMPO 2 PART NUMBER E CODICE A BARRE SE PREVISTO
- CAMPO 3 REVISIONE DELLA PARTE
- CAMPO 4 NUMERO DI SERIE

NOTA 1 : DA COMPILARE SOLO SE APPLICATA SU UN APPARATO NON  
CONTENENTE SOFTWARE

NOTA 2 : PER LE MODALITA' OPERATIVE DI SCRITTURA E PER LO STANDARD  
DA UTILIZZARE PER I CODICI A BARRE SEGUIRE LA PROCEDURA DI  
FABBRICAZIONE PF-090-01

N° REV. REV.NUM.	NUMERO ORDINE DI MODIFICA CHANGE ORDER NUMBER	DESCRIZIONE REVISIONE REVISION DESCRIPTION	DATA REVISIONE REVISION DATE
0	W.A. 1034149 RVT 60/0054	PRIMA EMISSIONE FIRST ISSUE	18/11/2008

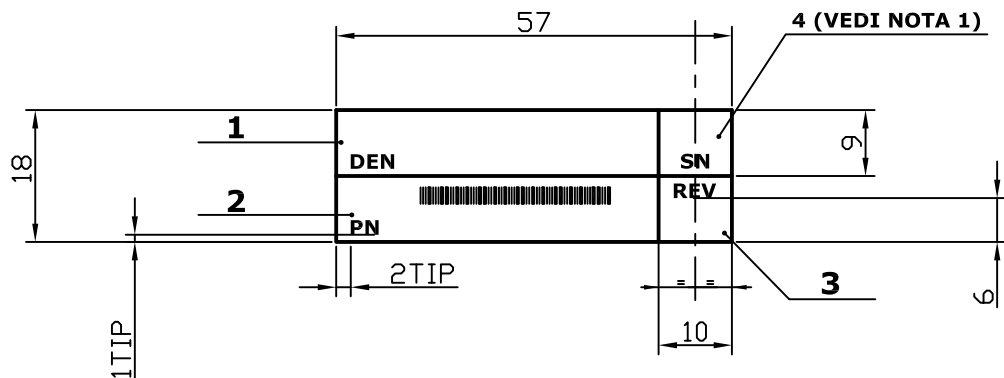
DISEGNATO DA	CONTROLLATO DA	APPROVATO DA	PESO (kg) WEIGHT (kg)	FORMATO DIS. DWG. SIZE
P.MIRABELLI	G.ALBERTINI	C.ZUCCOTTI		A4
STATO DEL DOCUMENTO DOCUMENT STATUS			SCALA SCALE	
			1:1	

TARGHETTA

oto melara UNA SOCIETA' FINMECCANICA		CL.MERC.O Q.COMM.CL.	LIV. CRIT. CRIT. LEV.	CAGE CODE	NUMERO DISEGNO / DRAWING NUMBER	REVISIONE REVISION	FOGLIO/FOGLI SHEET/SHEETS
		A	3	A0199	1955-31-081	00	1/1

Documento non pubblicato. Copyright DTD MELARA S.p.A. Tutti i diritti riservati.  
Unpublished document. Copyright DTD MELARA S.p.A. All rights reserved.

ATTENZIONE MODELLO C.A.D. - ogni modifica deve essere eseguita direttamente sul modello C.A.D. originale  
WARNING C.A.D. MODEL - every change must be done directly on the original C.A.D. model



UTILIZZARE LA TARGHETTA 821VN5091 E RIEMPIRE I CAMPI COME INDICATO  
DI SEGUITO CON ALTEZZA CARATTERI 2 MM :

- CAMPO 1 DENOMINAZIONE
- CAMPO 2 PART NUMBER E CODICE A BARRE SE PREVISTO
- CAMPO 3 REVISIONE DELLA PARTE
- CAMPO 4 NUMERO DI SERIE

NOTA 1 : DA COMPILARE SOLO SE APPLICATA SU UN APPARATO NON  
CONTENENTE SOFTWARE

NOTA 2 : PER LE MODALITA' OPERATIVE DI SCRITTURA E PER LO STANDARD  
DA UTILIZZARE PER I CODICI A BARRE SEGUIRE LA PROCEDURA DI  
FABBRICAZIONE PF-090-01

N° REV. REV.NUM.	NUMERO ORDINE DI MODIFICA CHANGE ORDER NUMBER	DESCRIZIONE REVISIONE REVISION DESCRIPTION	DATA REVISIONE REVISION DATE
0	W.A. 1034149 RVT 60/0054	PRIMA EMISSIONE FIRST ISSUE	18/11/2008

DISEGNATO DA PREPARED BY	CONTROLLATO DA CHECKED BY	APPROVATO DA APPROVED BY	PESO (kg) WEIGHT (kg)	FORMATO DIS. DWG. SIZE
P.MIRABELLI	G.ALBERTINI	C.ZUCCOTTI		A4
STATO DEL DOCUMENTO DOCUMENT STATUS			SCALA SCALE	
			1:1	

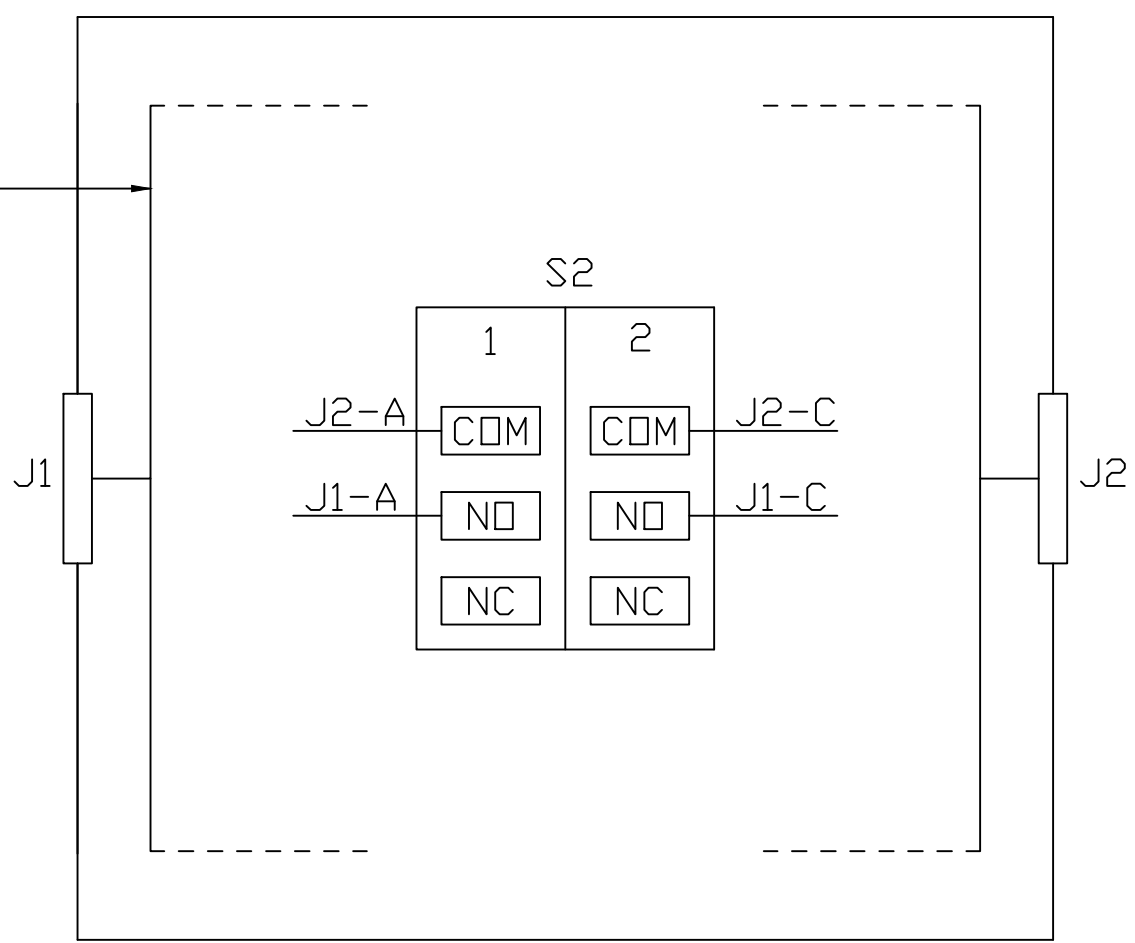
TARGHETTA

oto melara UNA SOCIETA' FINMECCANICA		CL.MERC.O Q.COMM.CL.	LIV. CRIT. CRIT. LEV.	CAGE CODE	NUMERO DISEGNO / DRAWING NUMBER	REVISIONE REVISION	FOGLIO/FOGLI SHEET/SHEETS
		A	3	A0199	1955-31-081	00	1/1

Documento non pubblicato. Copyright DTD MELARA S.p.A. Tutti i diritti riservati.  
Unpublished document. Copyright DTD MELARA S.p.A. All rights reserved.

ATTENZIONE MODELLO C.A.D. - ogni modifica deve essere eseguita direttamente sul modello C.A.D. originale  
WARNING C.A.D. MODEL - every change must be done directly on the original C.A.D. model

① ② ③



AWG	SCH.	DA	POS	A	POS
16	NO	J1	A	S2	1-NO
16	NO		B	J2	B
16	NO		C	S2	2-NO
16	NO		D	J2	D
			E		
16	NO	J2	A	S2	1-COM
16	NO		C	S2	2-COM

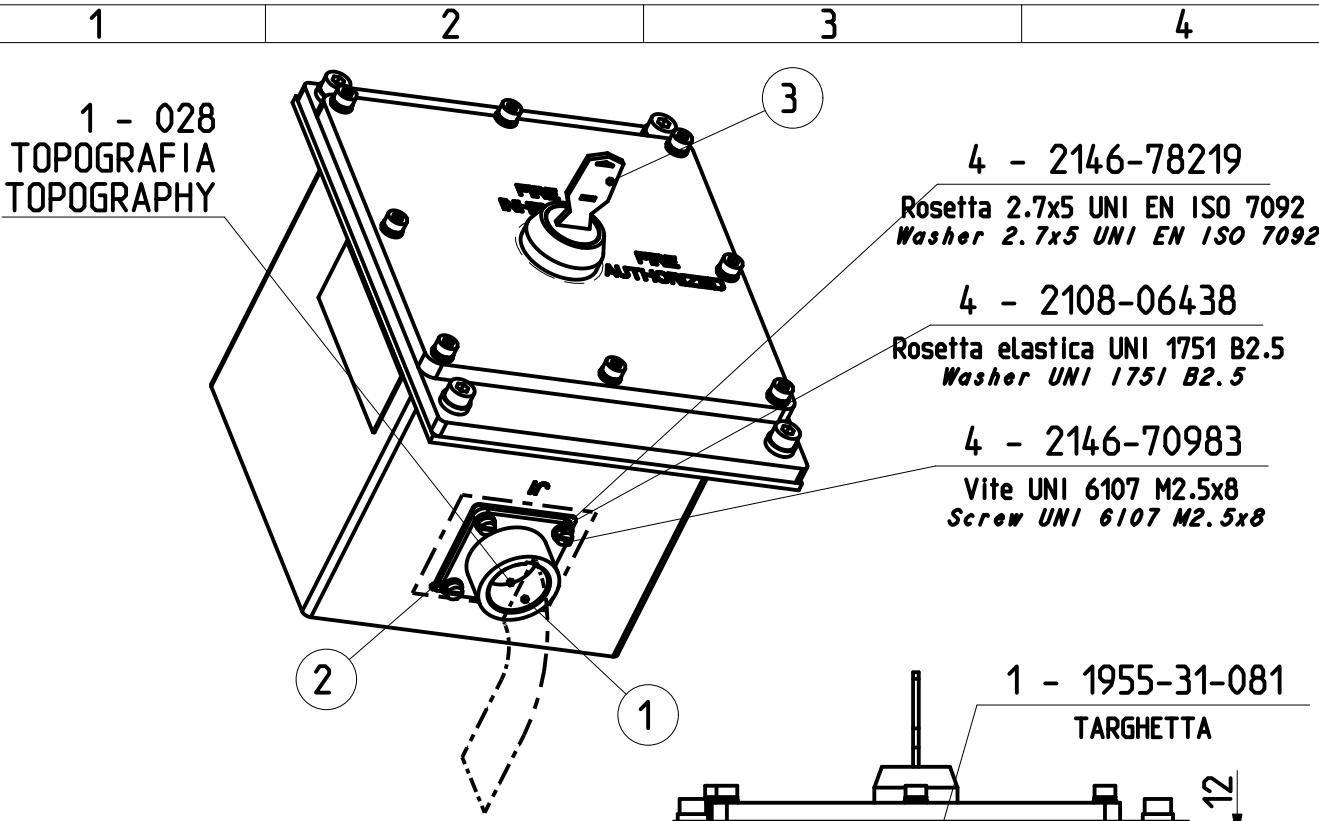
N° REV. REV. NUM.	NUMERO ORDINE DI MODIFICA CHANGE ORDER NUMBER	DESCRIZIONE REVISIONE REVISION DESCRIPTION	DATA REVISIONE REVISION DATE
0	ECN 37133	PRIMA EMISSIONE FIRST ISSUE	03/12/2015

DISEGNATO DA PREPARED BY	CONTROLLATO DA CHECKED BY	APPROVATO DA APPROVED BY	TOPOGRAFICO UNITA' BRIDGE	PESO (kg) WEIGHT (kg)	FORMATO DIS. DWG. SIZE
G. ALBERTINI	P. MIRABELLI	L. BIAGIONI	<b>BRIDGE UNIT TOPOGRAPHY</b>		A4
STATO DEL DOCUMENTO DOCUMENT STATUS				SCALA SCALE	
RILASCIATO RELEASED					



CL. MERC. & COMM. CL.	LIV. CRIT. CRIT. LEV.	CAGE CODE	NUMERO DISEGNO / DRAWING NUMBER	REVISIONE REVISION	FOGLIO/FOGLI SHEET/SHEETS
0	2	A0199	1976-72-032	0	1/1

Documento non pubblicato. Copyright OTO MELARA S.p.A. Tutti i diritti riservati.  
Unpublished document. Copyright OTO MELARA S.p.A. All rights reserved.



NOTA:  
ORIENTARE IL CAVO VERSO  
IL FONDO DELL'APPARATO

NOTE:  
ORIENTATE THE CABLE TO  
THE BOX BOTTOM

1 - 027  
ASS. MECC. CIC FIRING VETO  
CIC FIRING VETO MECH. ASS. Y

Ogni modifica deve essere eseguita direttamente sul modello C.A.D. originale  
Every change must be done directly on the original C.A.D. model

MATERIALE / MATERIAL			TOLLERANZE GENERALI GENERAL TOLERANCES	
			ISO 22768-v	
TRATTAMENTO / TREATMENT	PROTEZIONE / PROTECTION	VERNICIATURA / PAINTING	SMUSSI NON QUOTATI NOT DIMENSIONED CHAMFER	RAGGI NON QUOTATI NOT DIMENSIONED RADIUS
			0.3x45°	0.3

eccetto dove indicato tutte le quote tolleranze sono da intendersi dopo trattamento e/o protezione  
except where it is specified, all the drawing tolerances have to be considered after treatment and/or protection

N° REV. REV.NUM.	NUMERO ORDINE DI MODIFICA CHANGE ORDER NUMBER	DESCRIZIONE REVISIONE REVISION DESCRIPTION	DATA REVISIONE REVISION DATE
0	E.C.N. 37133	PRIMA EMISSIONE FIRST ISSUE	11-03-2016
1	ECN 39021	AGGIUNTA NOTA ADDED NOTE	26-05-2016

DISEGNATO DA PREPARED BY	CONTROLLATO DA CHECKED BY	APPROVATO DA APPROVED BY	<b>ASS.GEN.CIC FIRING VETO</b> - <b>CIC FIRING VETO GEN ASS.Y</b> -	PESO (kg) WEIGHT (kg)	FORMATO DIS. DWG. SIZE
G.MICHELA	P.MIRABELLI	L.BIAGIONI		0.0	A4
STATO DEL DOCUMENTO DOCUMENT STATUS				SCALA SCALE	

<b>FINMECCANICA</b> DIVISIONE SISTEMI DI DIFESA	CL. MERC. Q Q.COMM.CL.	LIV. CRIT. CRIT. LEV.	CAGE CODE	NUMERO DISEGNO / DRAWING NUMBER	REVISIONE REVISION	FOGLIO/FOGLI SHEET/SHEETS
	N	2	A0199	1976-72-022	1	1/1
			RQA-0001			

Il simbolo  $\Delta$  contenente il numero 1 o 2 identifica una caratteristica chiave che deve essere tracciata in accordo alla RQA0001  
The symbol  $\Delta$  with number 1 or 2 identifies a key feature that must be traceable in accordance with RQA0001

Eccetto dove indicato le specifiche tecniche richiamate a disegno sono da intendersi all'ultima revisione  
Except where it is specified, all the quoted technical specifications are in the last available revision

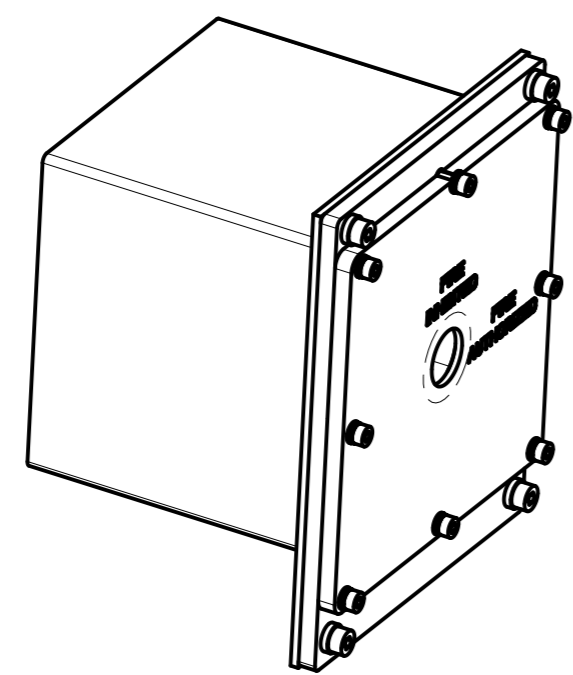
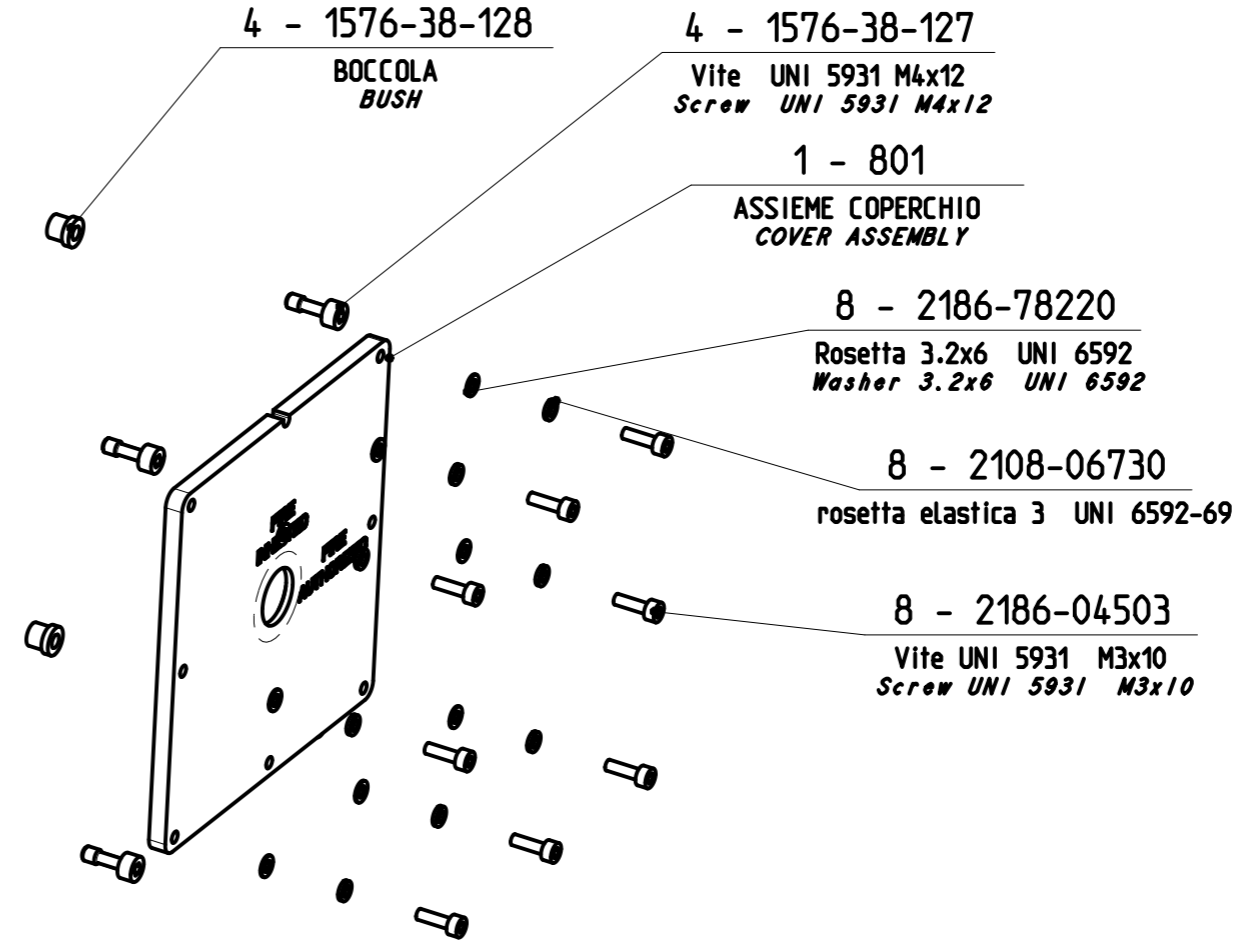
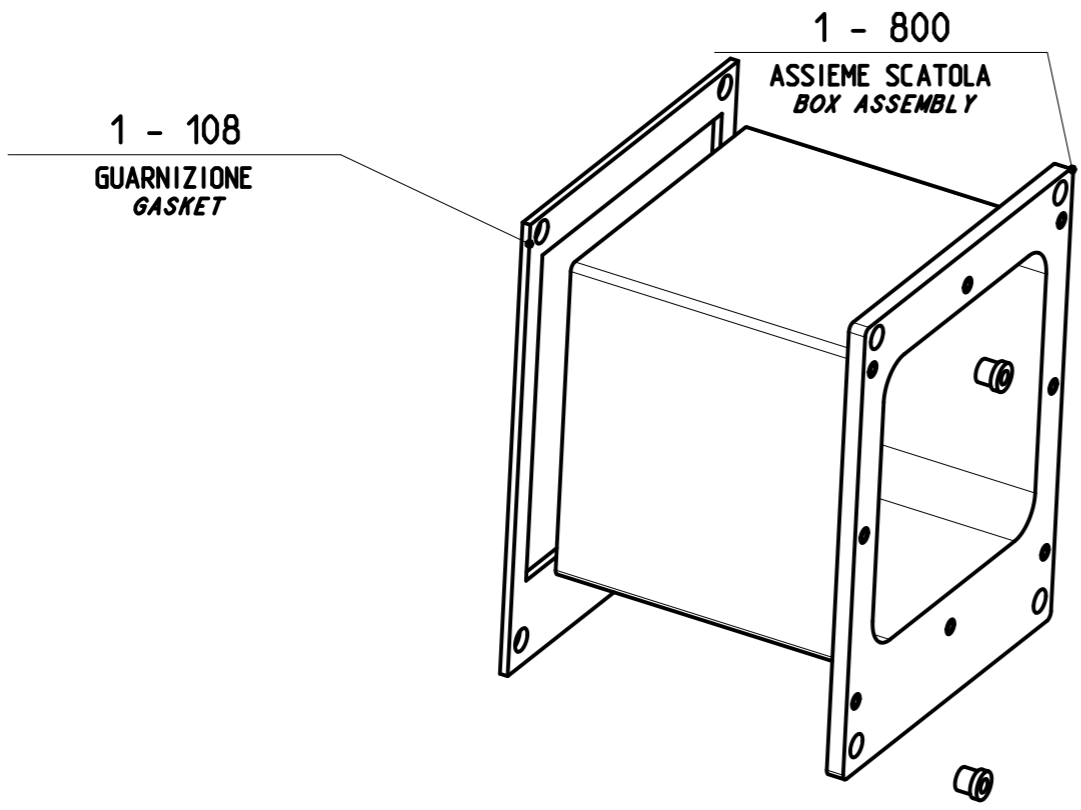
Documento non pubblicato. Copyright FINMECCANICA - Società per azioni. Tutti i diritti riservati.  
Unpublished document. Copyright FINMECCANICA - Limited Company. All rights reserved.

**Bill Of Material for Part No-197672022**

Level	(Part No.)/Doc	Description	Material	Treatment	Quantity/ UM	Commercial Code	Manufacturer(For ref. only)
0	197672022	GEN.ASS.CIC FIRING VETO					
1	811GU0058	GASKET VG95234DA14SL-2			1.0/ea	VG96940-06A003A	VG 95212 (LZB) (ex. P.Q.O.-10-4)
1	197672027	ASS. MEC. CIC FIRING VETO			1.0/ea		
2	197672800	BOX ASSEMBLY			1.0/ea		
3	210002501	Added thread M3(x0.5)x1 d	AUSTENITIC 18/8 STAINLESS STEEL	Passivation	8.0/ea		
3	197672100	BOX	Alloy EN AW-5083 Al Mg 4.5 Mn 0.7 O, H111,H116, H22/H32, H12, H14 EN 485-2		1.0/ea		
3	210002533	Heli-coil M4(x0.7)x1.5 d	AUSTENITIC 18/8 STAINLESS STEEL		4.0/ea		
3	210002500	Added thread M2.5(x0.45)x1 d	AUSTENITIC 18/8 STAINLESS STEEL	Passivation	4.0/ea		
2	197672108	GASKET	SEE NOTE		1.0/ea		
2	157638127	CAPTIVE SCREW			4.0/ea		
2	210806730	elastic washer 3 UNI 6592-69			8.0/ea		
2	157638128	BUSHING			4.0/ea		
2	218678220	Washer 3.2x6 UNI EN ISO 7092	STEEL/STEEL 200 HV - A2 (HARDNESS/HARDNESS 200~300 HV)		8.0/ea		
2	197672801	COVER ASSEMBLY			1.0/ea		
3	197672101	COVER	Alloy EN AW-5083 Al Mg 4.5 Mn 0.7 O, H111,H116, H22/H32, H12, H14 EN 485-2		1.0/ea		
3	157638128	BUSHING			4.0/ea		
3	157632210	GASKET			1.0/ea		
2	210606403	UNI1751 A4.3 WASHER	X5CrNi1810 UNI7323/8	Passivation	4.0/ea		
2	218604503	UNI 5931 M3x10 screw	X5 CrNi 1810 UNI EN ISO 3506		8.0/ea		
1	195531081	PLATE			1.0/ea		
2	821VN5091	PLATE			1.0/ea	Y4258709	BRADY
1	821VN5450	SWITCH			1.0/ea	A165K-T2ML-2A16S-2N-2	OMRON
1	214670983	UNI 6107 M2.5x8 screw	X5 CrNiMo 1712 UNI-EN-ISO 3506		4.0/ea		
1	810BA0368	CONN. MS3470W14-5P			1.0/ea	MS3470W14-5P	QPL-26482 (QPD)
1	210806438	Spring washer UNI 1751 B2.5	UNI 3545/80 RECOVERED (44/49 HRC)		4.0/ea		
1	214678219	Washer 2.7x5 UNI EN ISO 7092	STEEL/STEEL 200 HV - A4 (HARDNESS/HARDNESS 200~300 HV)		4.0/ea		
1	197672028	TOPOGRAPHIC CIC UNIT			1.0/ea		
2	890AN0037	PLATE			6.0/ea	TC817-TB	ABB
2	815UN0023	CONDUCTOR			1.0/ME	M22759/16-16-9 , M22759/16-16-9 (E)	NAV-00-00B000 , QPL-AS22759
2	890AN0004	CABLE TIE			12.0/ea	MS3367-4-9	QPL-AS23190-1 (QPD)
	###END OF FILE###				###END OF FILE###		

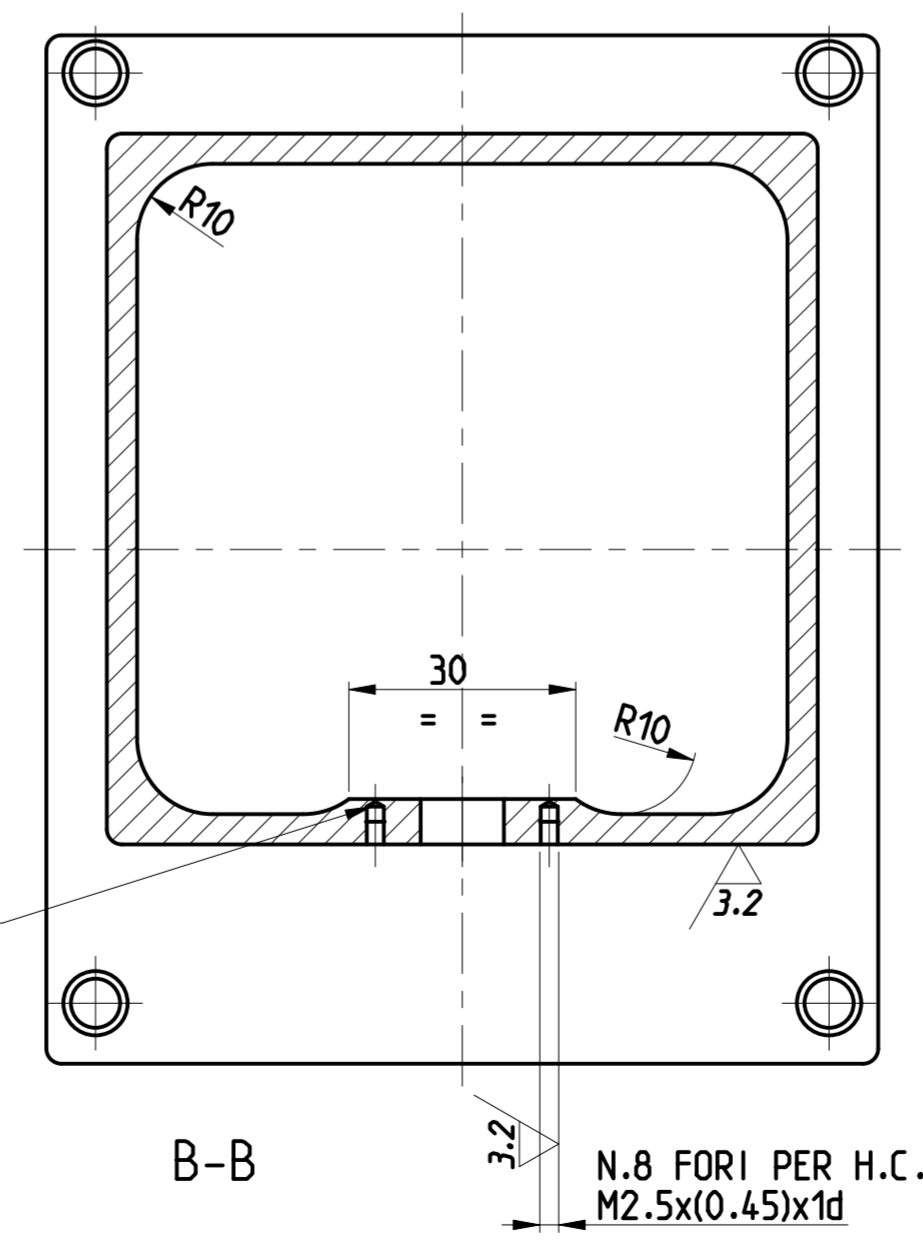
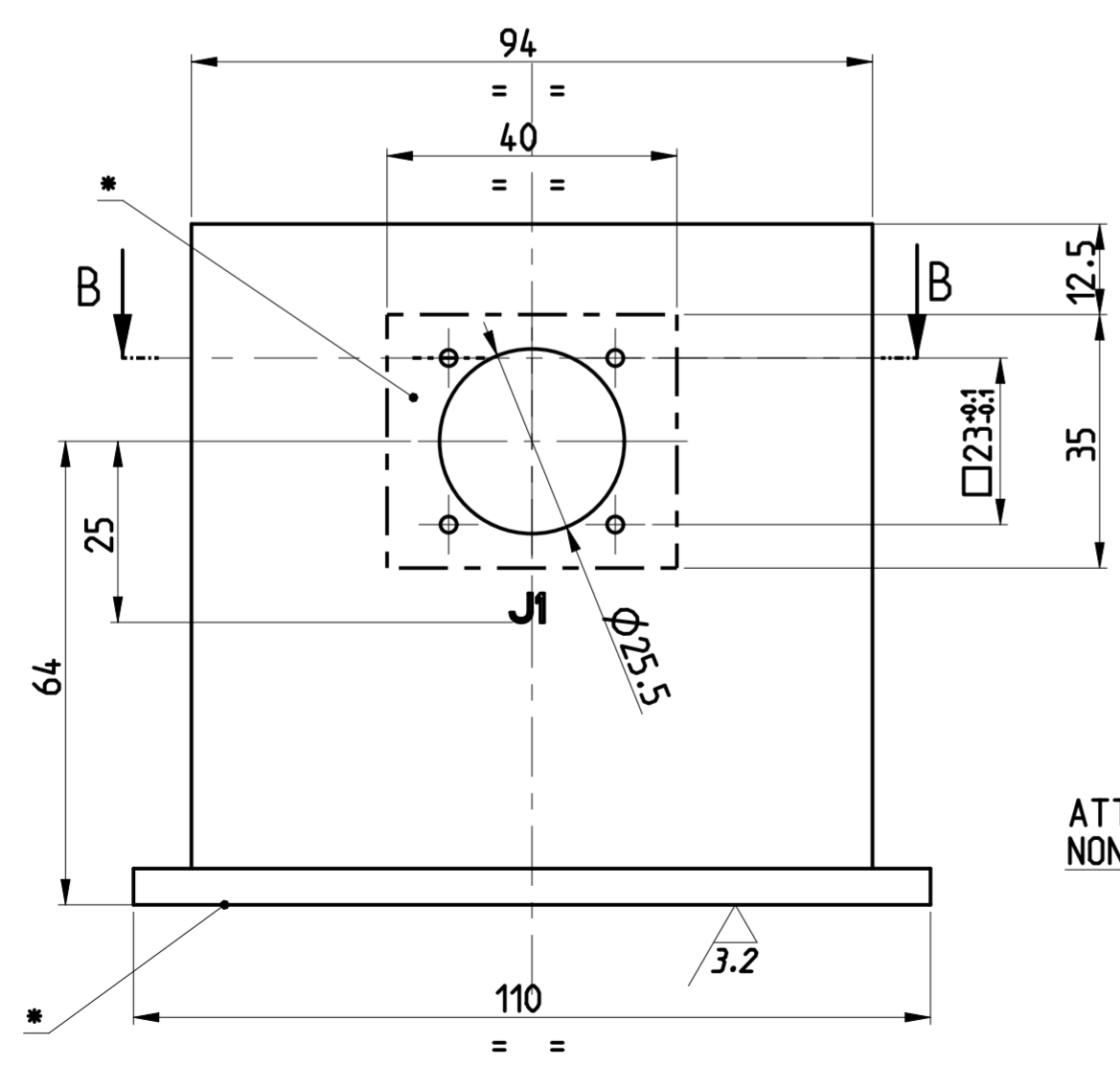
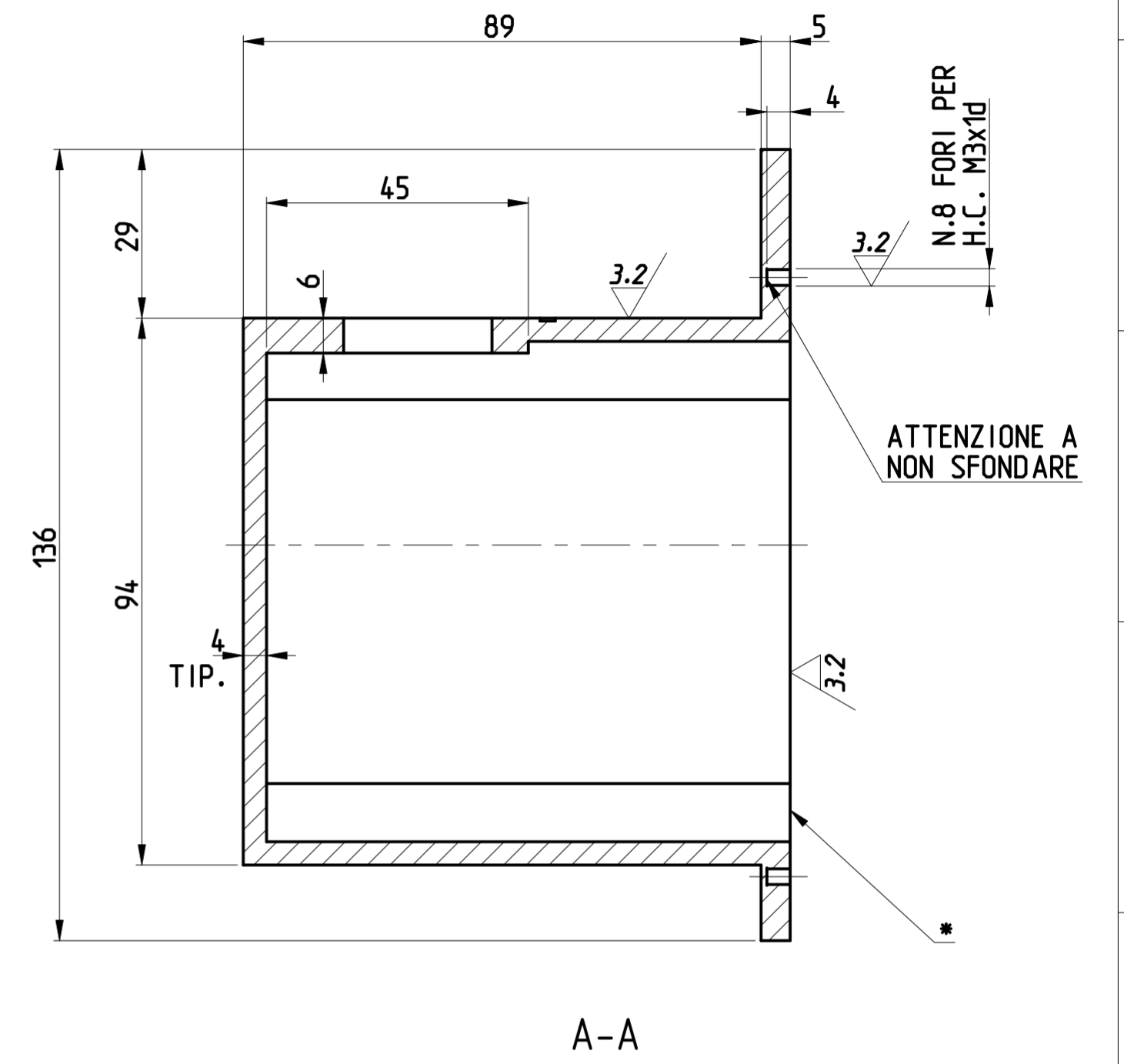
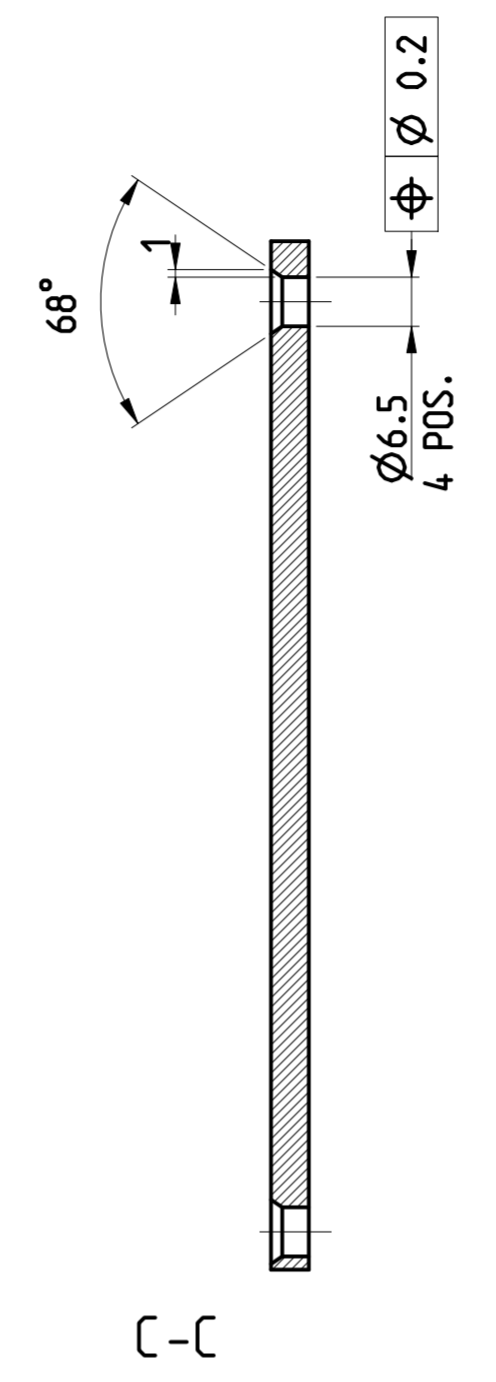
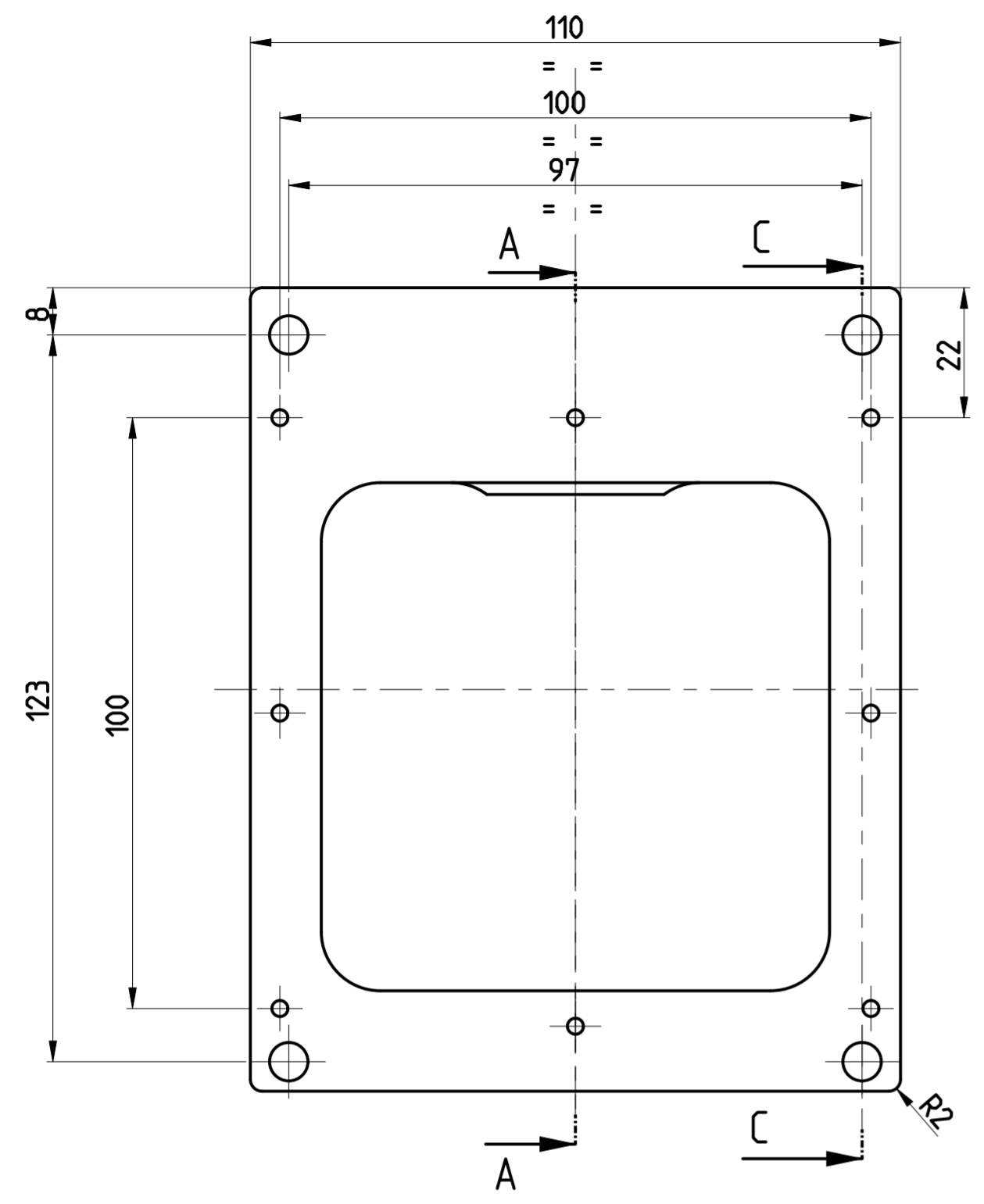
Ogni modifica deve essere eseguita direttamente sul modello C.A.D. originale  
Every change must be done directly on the original C.A.D. model

EXPLODED VIEW



MATERIALE / MATERIAL				TOLLERANZE GENERALI GENERAL TOLERANCES	
				ISO 22768-v	
TRATTAMENTO / TREATMENT	PROTEZIONE / PROTECTION	VERNICIATURA / PAINTING	SMUSSI NON QUOTATI NOT DIMENSIONED CHAMFER	RAGGI NON QUOTATI NOT DIMENSIONED RADIUS	
			0.3x45°	0.3	
eccetto dove indicato tutte le quote tollerate sono da intendersi dopo trattamento e/o protezione except where it is specified, all the drawing tolerances have to be considered after treatment and/or protection					
N° REV. REV.NUM.	NUMERO ORDINE DI MODIFICA CHANGE ORDER NUMBER	DESCRIZIONE REVISIONE REVISION DESCRIPTION			DATA REVISIONE REVISION DATE
0	E.C.N. 37133	PRIMA EMISSIONE FIRST ISSUE			11-03-2016
DISEGNATO DA PREPARED BY	CONTROLLATO DA CHECKED BY	APPROVATO DA APPROVED BY	ASS. MECC. CIC FIRING VETO		PESO (kg) WEIGHT (kg)
G.MICHELA	P.MIRABELLI	L.BIAGIONI	CIC FIRING VETO MECH. ASS.Y		0.0
STATO DEL DOCUMENTO DOCUMENT STATUS					FORMATO DIS. DWG. SIZE
RILASCIATO ISSUED					A3
					SCALA SCALE
					1:2
			CL.MERC. & LIV. CRIT. & COMM. CL. CRIT. LEV.	CAGE CODE	NUMERO DISEGNO / DRAWING NUMBER
			N 3	A0199	1976-72-027
			RQA-0001		0
					FOGLIO/FOGLI SHEET/SHEETS
					1/1
Il simbolo $\Delta$ contenente il numero 1 o 2 identifica una caratteristica chiave che deve essere tracciata in accordo alla RQA0001 The symbol $\Delta$ with number 1 or 2 identifies a key feature that must be traceable in accordance with RQA0001					
Eccetto dove indicato le specifiche tecniche richiamate a disegno sono da intendersi all'ultima revisione Except where it is specified, all the quoted technical specifications are in the last available revision					
Documento non pubblicato. Copyright FINMECCANICA - Società per azioni. Tutti i diritti riservati. Unpublished document. Copyright FINMECCANICA - Limited Company. All rights reserved.					

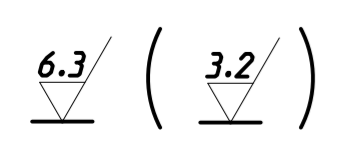
Ogni modifica deve essere eseguita direttamente sul modello C.A.D. originale  
Every change must be done directly on the original C.A.D. model



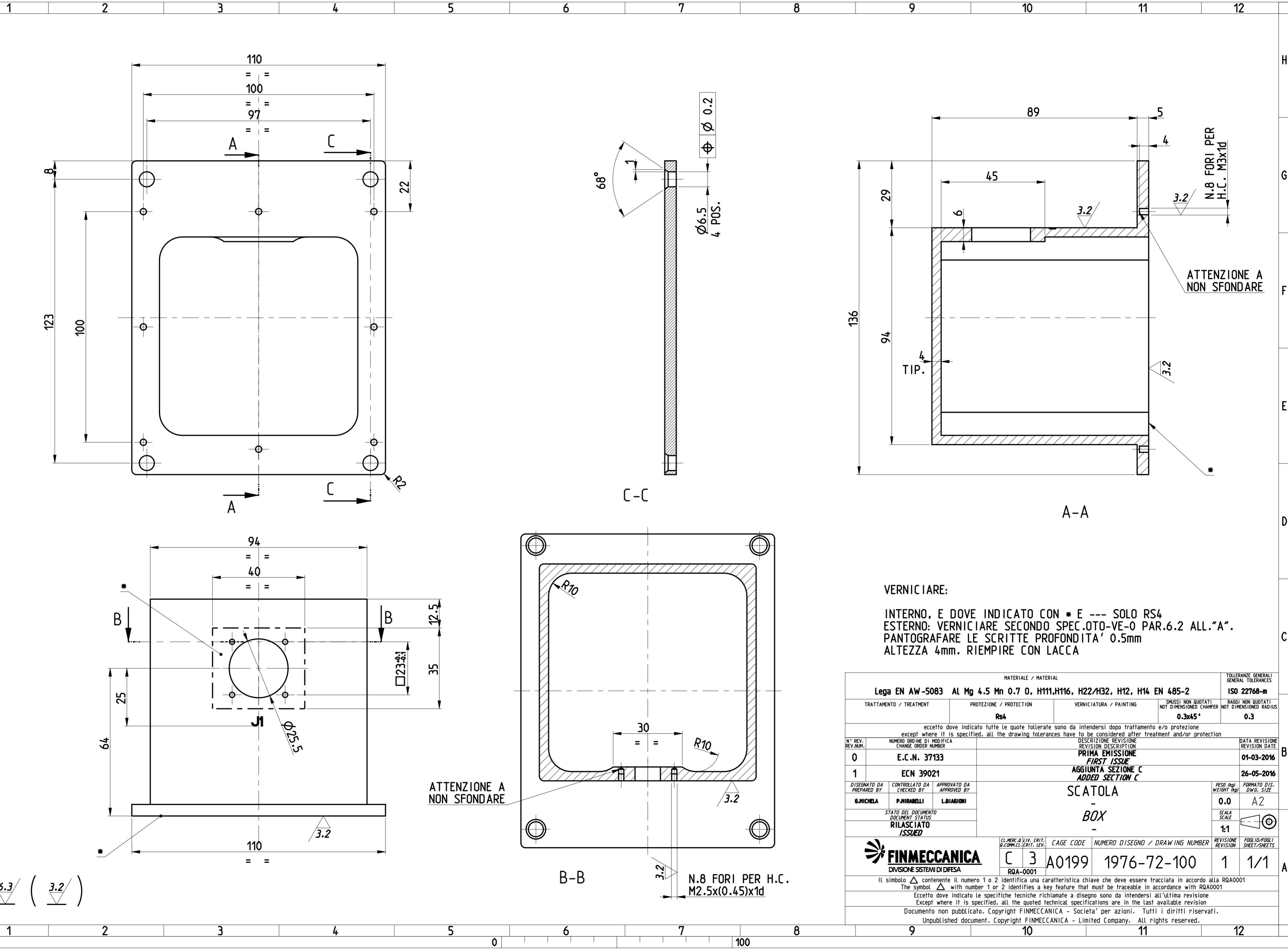
VERNICIARE:

INTERNO, E DOVE INDICATO CON \* E --- SOLO RS4  
ESTERNO: VERNICIARE SECONDO SPEC.OTO-VE-0 PAR.6.2 ALL."A".  
PANTOGRAFARE LE SCRITTE PROFONDITA' 0.5mm  
ALTEZZA 4mm. RIEMPIRE CON LACCA

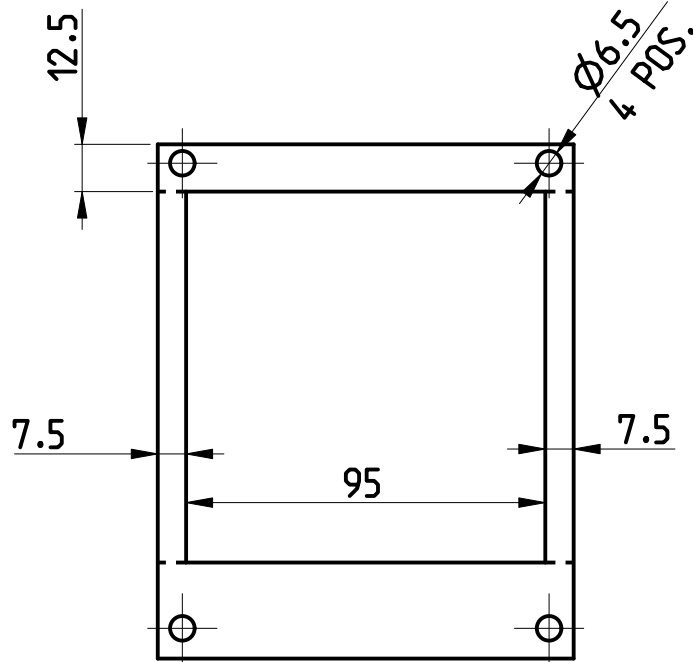
MATERIALE / MATERIAL		Lega EN AW-5083 Al Mg 4.5 Mn 0.7 O. H111,H116, H22/H32, H12, H14 EN 485-2		TOLLERANZE GENERALI GENERAL TOLERANCES	ISO 22768-m
TRATTAMENTO / TREATMENT	PROTEZIONE / PROTECTION	VERNICIATURA / PAINTING	SMUSSI NON QUOTATI NOT DIMENSIONED CHAMFER	RAGGI NON QUOTATI NOT DIMENSIONED RADIUS	
	Rs4		0.3x45°	0.3	
eccetto dove indicato tutte le quote tollerate sono da intendersi dopo trattamento e/o protezione except where it is specified, all the drawing tolerances have to be considered after treatment and/or protection					
N° REV. REV.NUM.	NUMERO ORDINE DI MODIFICA CHANGE ORDER NUMBER	DESCRIZIONE REVISIONE REVISION DESCRIPTION		DATA REVISIONE REVISION DATE	
0	E.C.N. 37133	PRIMA EMISSIONE FIRST ISSUE		01-03-2016	
1	ECN 39021	AGGIUNTA SEZIONE C ADDED SECTION C		26-05-2016	
DISEGNATO DA PREPARED BY	CONTROLLATO DA CHECKED BY	APPROVATO DA APPROVED BY	STATO DEL DOCUMENTO DOCUMENT STATUS		FORMATO DIS. DWG. SIZE
G.MICHELA	P.MIRABELLI	L.BIAGIONI	RILASCIATO ISSUED		0.0 A2
FINMECCANICA DIVISIONE SISTEMI DI DIFESA			CL.MERC.D Q.COMM.CL.CRIT. LEV.	CAGE CODE	NUMERO DISEGNO / DRAWING NUMBER
			RQA-0001	A0199	1976-72-100
			CL.MERC.D Q.COMM.CL.CRIT. LEV.	CAGE CODE	NUMERO DISEGNO / DRAWING NUMBER
			RQA-0001	A0199	1976-72-100
Il simbolo Δ contenente il numero 1 o 2 identifica una caratteristica chiave che deve essere tracciata in accordo alla RQA0001 The symbol Δ with number 1 or 2 identifies a key feature that must be traceable in accordance with RQA0001					
Eccetto dove indicato le specifiche tecniche richiamate a disegno sono da intendersi all'ultima revisione Except where it is specified, all the quoted technical specifications are in the last available revision					
Documento non pubblicato. Copyright FINMECCANICA - Società per azioni. Tutti i diritti riservati. Unpublished document. Copyright FINMECCANICA - Limited Company. All rights reserved.					



ATTENZIONE A NON SFONDARE



Ogni modifica deve essere eseguita direttamente sul modello C.A.D. originale  
Every change must be done directly on the original C.A.D. model



**NOTE:**  
**RICAVATO DA COMMERCIO**  
**FORNITORE: TECKNIT**  
**CODICE DI IDENTIFICAZIONE TECKNIT PART. N. 88-12452**  
**DIMENSIONI 25.4mm x Sp. 2.36mm**  
**TAGLIARE COME QUOTE INDICATE**  
**MATERIALE: ELASTOFOAM ORIENTED WIRES IN SOFT SILICONE SPONGE**

MATERIALE / MATERIAL			TOLLERANZE GENERALI GENERAL TOLERANCES	
VEDI NOTA			ISO 22768-m	
TRATTAMENTO / TREATMENT	PROTEZIONE / PROTECTION	VERNICIATURA / PAINTING	SMUSSI NON QUOTATI NOT DIMENSIONED CHAMFER	RAGGI NON QUOTATI NOT DIMENSIONED RADIUS
			0.3x45°	0.3

eccetto dove indicato tutte le quote tolleranze sono da intendersi dopo trattamento e/o protezione  
except where it is specified, all the drawing tolerances have to be considered after treatment and/or protection

N° REV. REV. NUM.	NUMERO ORDINE DI MODIFICA CHANGE ORDER NUMBER	DESCRIZIONE REVISIONE REVISION DESCRIPTION	DATA REVISIONE REVISION DATE
0	E.C.N. 37133	PRIMA EMISSIONE FIRST ISSUE	14-03-2016

DISEGNATO DA PREPARED BY	CONTROLLATO DA CHECKED BY	APPROVATO DA APPROVED BY	GUARNIZIONE - GASKET -	PESO (kg) WEIGHT (kg)	FORMATO DIS. DWG. SIZE
G.MICHELA	P.MIRABELLI	L.BIAGIONI		0.0	A4
STATO DEL DOCUMENTO DOCUMENT STATUS				SCALA SCALE	
RILASCIATO ISSUED				1:2	



CL. MERC. & G. COMM. CL. CRIT. LEV.	LIV. CRIT. LEV.	CAGE CODE	NUMERO DISEGNO / DRAWING NUMBER	REVISIONE REVISION	FOGLIO/FOGLI SHEET/SHEETS
C	3	A0199	1976-72-108	0	1/1
RQA-0001					

Il simbolo  $\Delta$  contenente il numero 1 o 2 identifica una caratteristica chiave che deve essere tracciata in accordo alla RQA0001  
The symbol  $\Delta$  with number 1 or 2 identifies a key feature that must be traceable in accordance with RQA0001

Eccetto dove indicato le specifiche tecniche richiamate a disegno sono da intendersi all'ultima revisione  
Except where it is specified, all the quoted technical specifications are in the last available revision

Documento non pubblicato. Copyright FINMECCANICA - Società per azioni. Tutti i diritti riservati.  
Unpublished document. Copyright FINMECCANICA - Limited Company. All rights reserved.

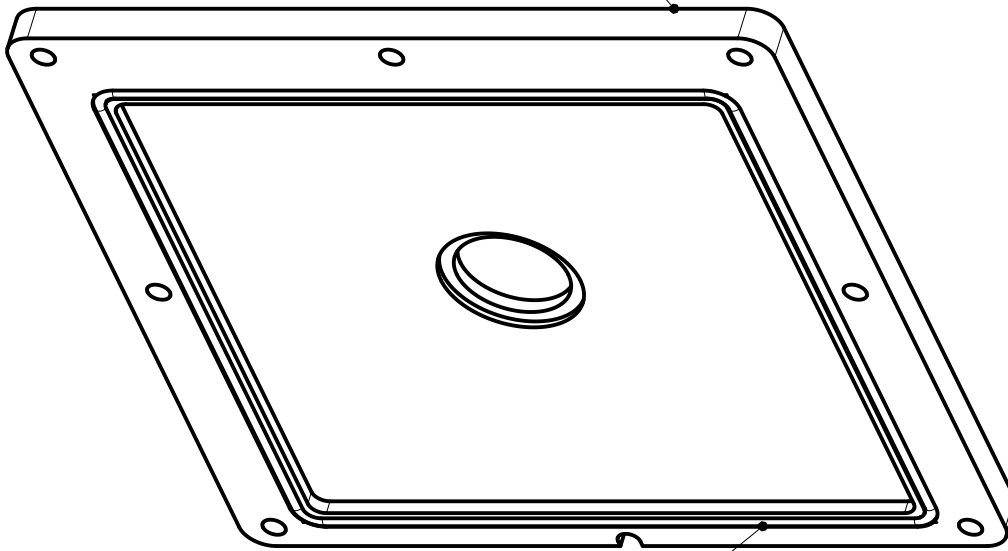
1

2

3

4

1 - 101  
COPERCHIO  
COVER



1 - 1576-32-210  
GUARNIZIONE  
GASKET

Ogni modifica deve essere eseguita direttamente sul modello C.A.D. originale  
Every change must be done directly on the original C.A.D. model

MATERIALE / MATERIAL

TOLLERANZE GENERALI  
GENERAL TOLERANCES

ISO 22768-v

TRATTAMENTO / TREATMENT

PROTEZIONE / PROTECTION

VERNICIATURA / PAINTING

SMUSSI NON QUOTATI  
NOT DIMENSIONED CHAMFERRAGGI NON QUOTATI  
NOT DIMENSIONED RADIUS

0.3x45°

0.3

eccetto dove indicato tutte le quote tolleranze sono da intendersi dopo trattamento e/o protezione

except where it is specified, all the drawing tolerances have to be considered after treatment and/or protection

N° REV. REV.NUM.	NUMERO ORDINE DI MODIFICA CHANGE ORDER NUMBER	DESCRIZIONE REVISIONE REVISION DESCRIPTION	DATA REVISIONE REVISION DATE
0	E.C.N. 37133	PRIMA EMISSIONE FIRST ISSUE	01-03-2016

DISEGNATO DA  
PREPARED BYCONTROLLATO DA  
CHECKED BYAPPROVATO DA  
APPROVED BY

G.MICHELA

P.MIRABELLI

L.BIAGIONI

ASSIEME COPERCHIO

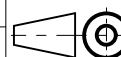
PESO (kg)  
WEIGHT (kg)FORMATO DIS.  
DWG. SIZE

0.0

A4

STATO DEL DOCUMENTO  
DOCUMENT STATUS

COVER ASSEMBLY

SCALA  
SCALERILASCIATO  
ISSUED

1:1

**FINMECCANICA**

DIVISIONE SISTEMI DI DIFESA

CL. MERC. 0  
G.COMM.CL. CRIT. LEV.LIV. CRIT.  
CRIT. LEV.

CAGE CODE

NUMERO DISEGNO / DRAWING NUMBER

REVISIONE  
REVISIONFOGLIO/FOGLI  
SHEET/SHEETS

N

3

A0199

1976-72-801

0

1/1

RQA-0001

Il simbolo  $\triangle$  contenente il numero 1 o 2 identifica una caratteristica chiave che deve essere tracciata in accordo alla RQA0001

The symbol  $\triangle$  with number 1 or 2 identifies a key feature that must be traceable in accordance with RQA0001

Eccetto dove indicato le specifiche tecniche richiamate a disegno sono da intendersi all'ultima revisione

Except where it is specified, all the quoted technical specifications are in the last available revision

Documento non pubblicato. Copyright FINMECCANICA - Società per azioni. Tutti i diritti riservati.

Unpublished document. Copyright FINMECCANICA - Limited Company. All rights reserved.

0

100

TOLLERANZE GENERALI DI LAVORAZIONE  
 QUOTE LIN. (ØCOMP.) SINO A 18 ± 0.15  
 > > > > 18 A 80 ± 0.25  
 > > > > 80 ± 0.4  
 ANGOLI ± 30'

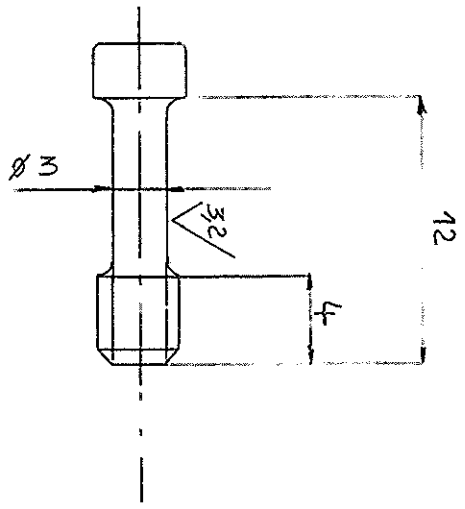
TOLL. GENER. DEI PEZZI GREZZI FUSI  
 DIAMETRI E LUNGH. ± (0.5% + 1MM)  
 SPESS. ± 8% (MIN ± 0.5 M.M.)  
 ANGOLI ± 2°

TOLL. GEN. DEI PEZ. GREZZI STAMP A CALDO  
 QUOTE LIN. (ØCOMP.) SINO A 18 + 0.5 - 0.3  
 > > > > 18 A 80 + 1 - 0.5  
 > > > > 80 + 2 - 0.8  
 ANGOLI + 1°

R = 0.3 O SMUSSO 0.3x45°  
 DOVE NON INDICATO  
 LE ZONE INDICATE A  
 PREVED. SOPRAMETALLI DA  
 ASPORT. A STRUT. ASSIEMATA

COMUNANZE					4	1526	38	071
No.	TIPO	GR.	S.G.	C.T.	5			
1	1576	32	071		6			
2	1576	32	043		7			
3	1576	38	044		8			

No. DIS. ....



RICAVATA DA VITE T.C.E.I. M4x12 UNI 5931

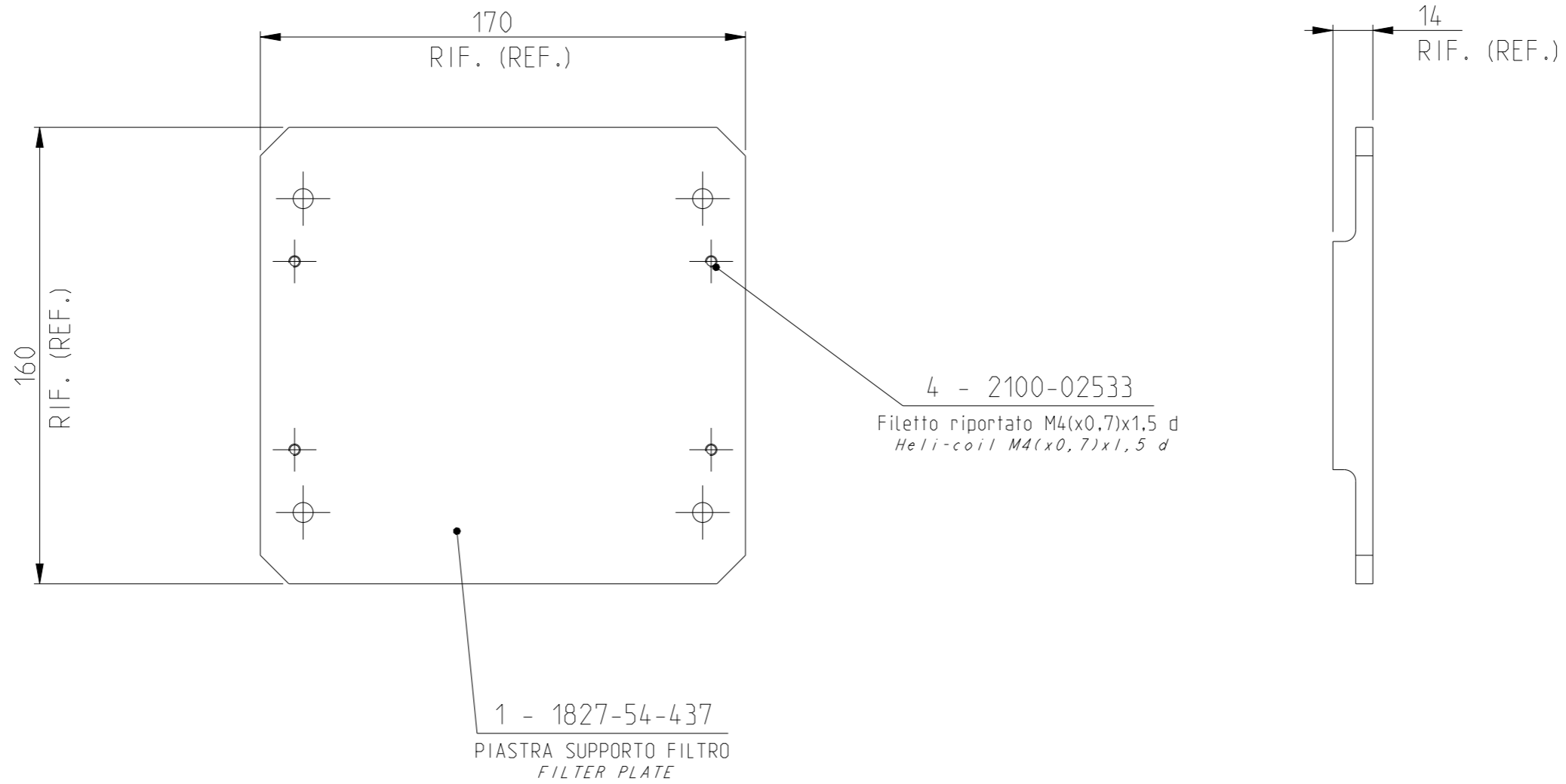
QUOTE IN TOLLERANZA	
QUOTA E SIMBOLO	LIMITI

No PART.	DENOMINAZIONE	No PEZZI	MATERIALE	TRATTAMENTO	PROTEZIONE	NORMALE
1	VITE CAPTIVA		X8 Cr Ni 1812 UNI 6900		R.S.6.	
2	SOSTITUITO DA	SOSTITUISCE IL	GREZZO Kg.	FINITO Kg.	R. M. N.	17-12 88
3	INDICE E DESCRIZIONE DELLE MODIFICHE					
4					DISEGN. VISTO	DATA
5						NOR.
6						
7						
8						

S. P. A.  
**OTO - MELARA**  
 LA SPEZIA  
 TITOLO CASSETTA 21B4  
 No DIS. 1576 - 38 - 127. 00.  
 SCALA / TAVOLA:  
 ORIGINI: 1576 - 32 - 070

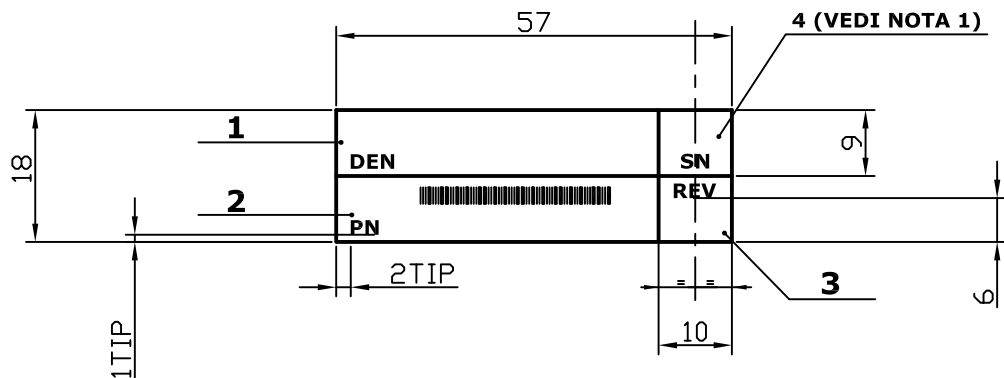
TEC. 56460 - 0130 NON MISURARE IN SCALA EUROORDEL 331/87 Milano

Ogni modifica deve essere eseguita direttamente sul modello C.A.D. originale  
Every change must be done directly on the original C.A.D. model



MATERIALE / MATERIAL					TOLLERANZE GENERALI GENERAL TOLERANCES		
TRATTAMENTO / TREATMENT			PROTEZIONE / PROTECTION	VERNICIATURA / PAINTING	SMUSSI NON QUOTATI NOT DIMENSIONED CHAMFER	RAGGI NON QUOTATI NOT DIMENSIONED RADIUS	
					0.3x45°	0.3	
eccetto dove indicato tutte le quote tollerate sono da intendersi dopo trattamento e/o protezione except where it is specified, all the drawing tolerances have to be considered after treatment and/or protection							
N° REV. REV.NUM.	NUMERO ORDINE DI MODIFICA CHANGE ORDER NUMBER		DESCRIZIONE REVISIONE REVISION DESCRIPTION			DATA REVISIONE REVISION DATE	
0	ECN 48888		PRIMA EMISSIONE FIRST ISSUE			08-06-2020	
DISEGNATO DA PREPARED BY	CONTROLLATO DA CHECKED BY	APPROVATO DA APPROVED BY	PIASTRA INSERTATA 127/64 L.W. VULCANO INSERT PLATE 127/64 L.W. VULCANO			PESO (kg) WEIGHT (kg)	FORMATO DIS. DWG. SIZE
R. DEL NEVO	Bruschi Andrea	Donati Luca				0.6	A3
STATO DEL DOCUMENTO DOCUMENT STATUS			SCALA SCALE				
RILASCIATO ISSUED			1:2				
		CL.MERC.0 Q.COMM.CL.	LIV. CRIT. CRIT. LEV.	CAGE CODE	NUMERO DISEGNO / DRAWING NUMBER	REVISIONE REVISION	FOGLIO/FOGLI SHEET/SHEETS
		M05	3	A0199	1828-54-011	0	1/1
		RQA-0001					
Il simbolo  contenente il numero 1 o 2 identifica una caratteristica chiave che deve essere tracciata in accordo alla RQA0001 The symbol  with number 1 or 2 identifies a key feature that must be traceable in accordance with RQA0001							
Eccetto dove indicato le specifiche tecniche richiamate a disegno sono da intendersi all'ultima revisione Except where it is specified, all the quoted technical specifications are in the last available revision							
Documento non pubblicato. Copyright LEONARDO - Società per azioni. Tutti i diritti riservati. Unpublished document. Copyright LEONARDO - Limited Company. All rights reserved.							

ATTENZIONE MODELLO C.A.D. - ogni modifica deve essere eseguita direttamente sul modello C.A.D. originale  
WARNING C.A.D. MODEL - every change must be done directly on the original C.A.D. model



UTILIZZARE LA TARGHETTA 821VN5091 E RIEMPIRE I CAMPI COME INDICATO  
DI SEGUITO CON ALTEZZA CARATTERI 2 MM :

- CAMPO 1 DENOMINAZIONE
- CAMPO 2 PART NUMBER E CODICE A BARRE SE PREVISTO
- CAMPO 3 REVISIONE DELLA PARTE
- CAMPO 4 NUMERO DI SERIE

NOTA 1 : DA COMPILARE SOLO SE APPLICATA SU UN APPARATO NON  
CONTENENTE SOFTWARE

NOTA 2 : PER LE MODALITA' OPERATIVE DI SCRITTURA E PER LO STANDARD  
DA UTILIZZARE PER I CODICI A BARRE SEGUIRE LA PROCEDURA DI  
FABBRICAZIONE PF-090-01

N° REV. REV.NUM.	NUMERO ORDINE DI MODIFICA CHANGE ORDER NUMBER	DESCRIZIONE REVISIONE REVISION DESCRIPTION	DATA REVISIONE REVISION DATE
0	W.A. 1034149 RVT 60/0054	PRIMA EMISSIONE FIRST ISSUE	18/11/2008

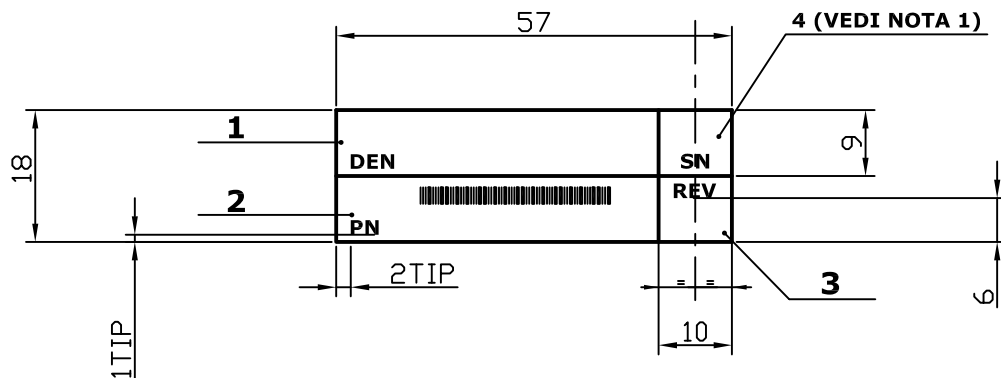
DISEGNATO DA PREPARED BY	CONTROLLATO DA CHECKED BY	APPROVATO DA APPROVED BY	PESO (kg) WEIGHT (kg)	FORMATO DIS. DWG. SIZE
P.MIRABELLI	G.ALBERTINI	C.ZUCCOTTI		A4
STATO DEL DOCUMENTO DOCUMENT STATUS			SCALA SCALE	
			1:1	

TARGHETTA

oto melara UNA SOCIETA' FINMECCANICA		CL.MERC.O Q.COMM.CL.	LIV. CRIT. CRIT. LEV.	CAGE CODE	NUMERO DISEGNO / DRAWING NUMBER	REVISIONE REVISION	FOGLIO/FOGLI SHEET/SHEETS
		A	3	A0199	1955-31-081	00	1/1

Documento non pubblicato. Copyright OTO MELARA S.p.A. Tutti i diritti riservati.  
Unpublished document. Copyright OTO MELARA S.p.A. All rights reserved.

ATTENZIONE MODELLO C.A.D. - ogni modifica deve essere eseguita direttamente sul modello C.A.D. originale  
WARNING C.A.D. MODEL - every change must be done directly on the original C.A.D. model



UTILIZZARE LA TARGHETTA 821VN5091 E RIEMPIRE I CAMPI COME INDICATO  
DI SEGUITO CON ALTEZZA CARATTERI 2 MM :

- CAMPO 1 DENOMINAZIONE
- CAMPO 2 PART NUMBER E CODICE A BARRE SE PREVISTO
- CAMPO 3 REVISIONE DELLA PARTE
- CAMPO 4 NUMERO DI SERIE

NOTA 1 : DA COMPILARE SOLO SE APPLICATA SU UN APPARATO NON  
CONTENENTE SOFTWARE

NOTA 2 : PER LE MODALITA' OPERATIVE DI SCRITTURA E PER LO STANDARD  
DA UTILIZZARE PER I CODICI A BARRE SEGUIRE LA PROCEDURA DI  
FABBRICAZIONE PF-090-01

N° REV. REV.NUM.	NUMERO ORDINE DI MODIFICA CHANGE ORDER NUMBER	DESCRIZIONE REVISIONE REVISION DESCRIPTION	DATA REVISIONE REVISION DATE
0	W.A. 1034149 RVT 60/0054	PRIMA EMISSIONE FIRST ISSUE	18/11/2008

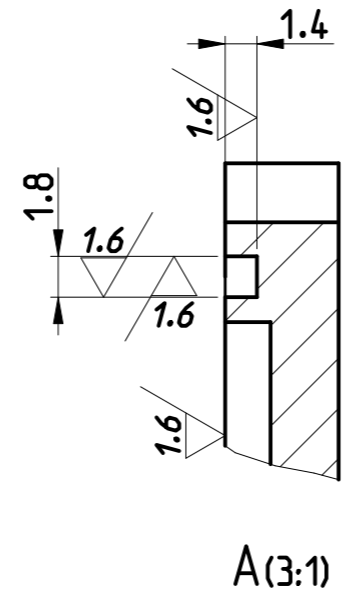
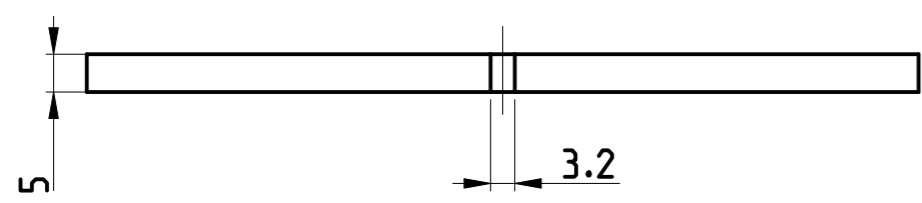
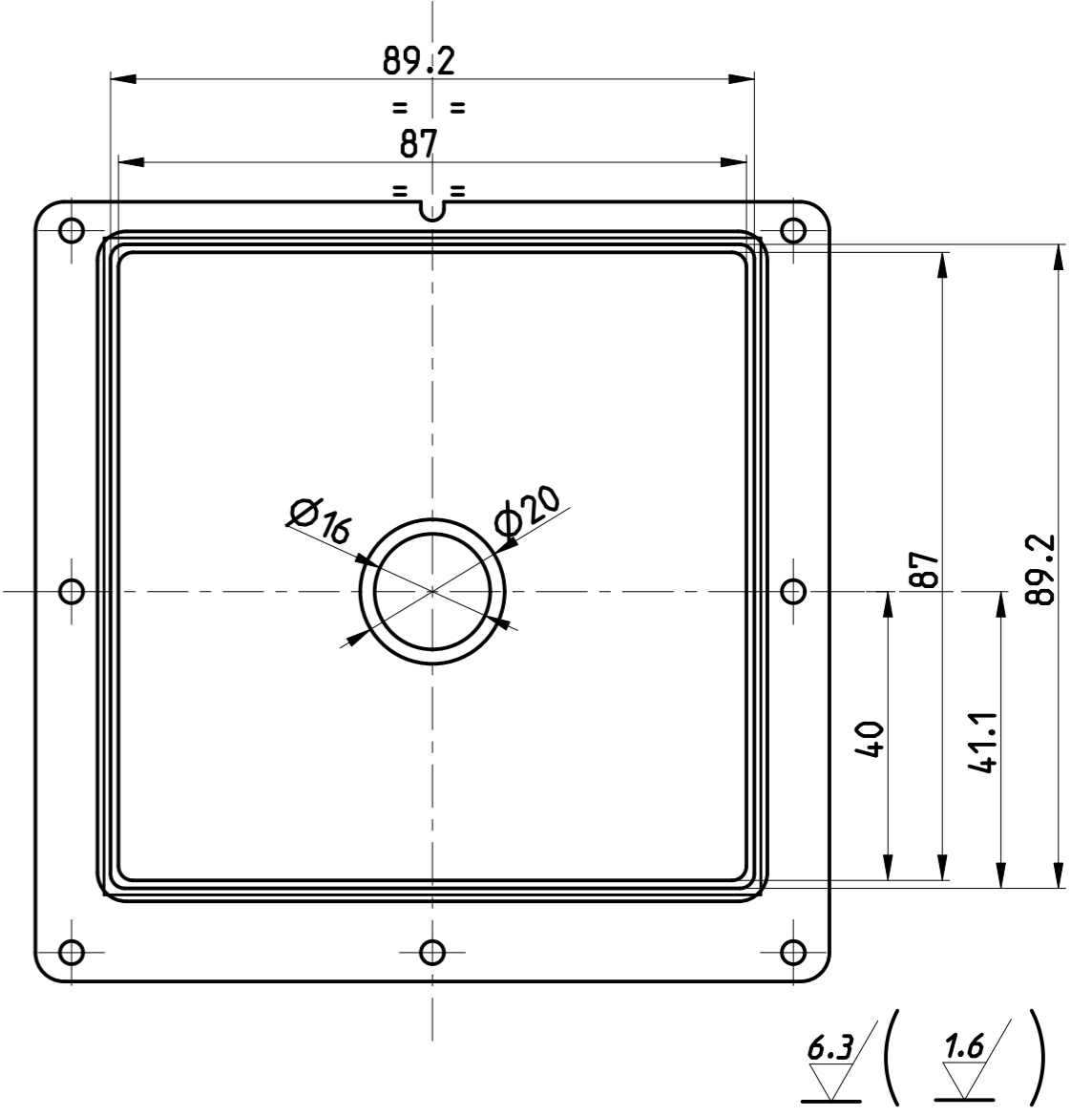
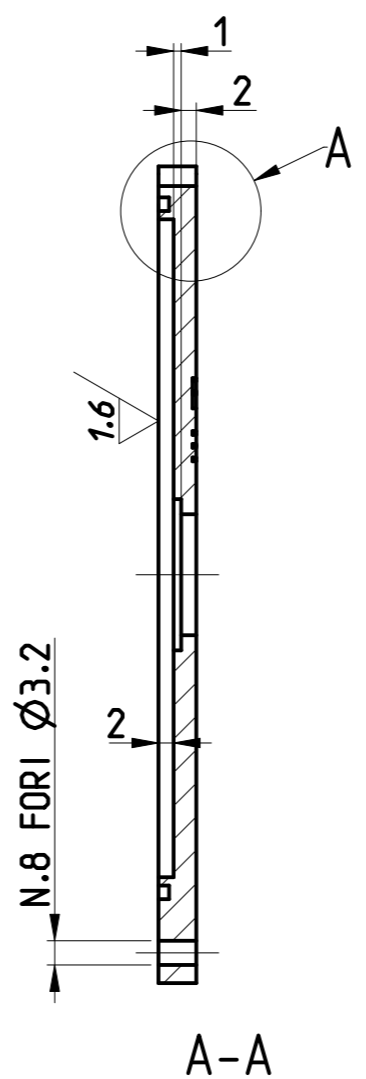
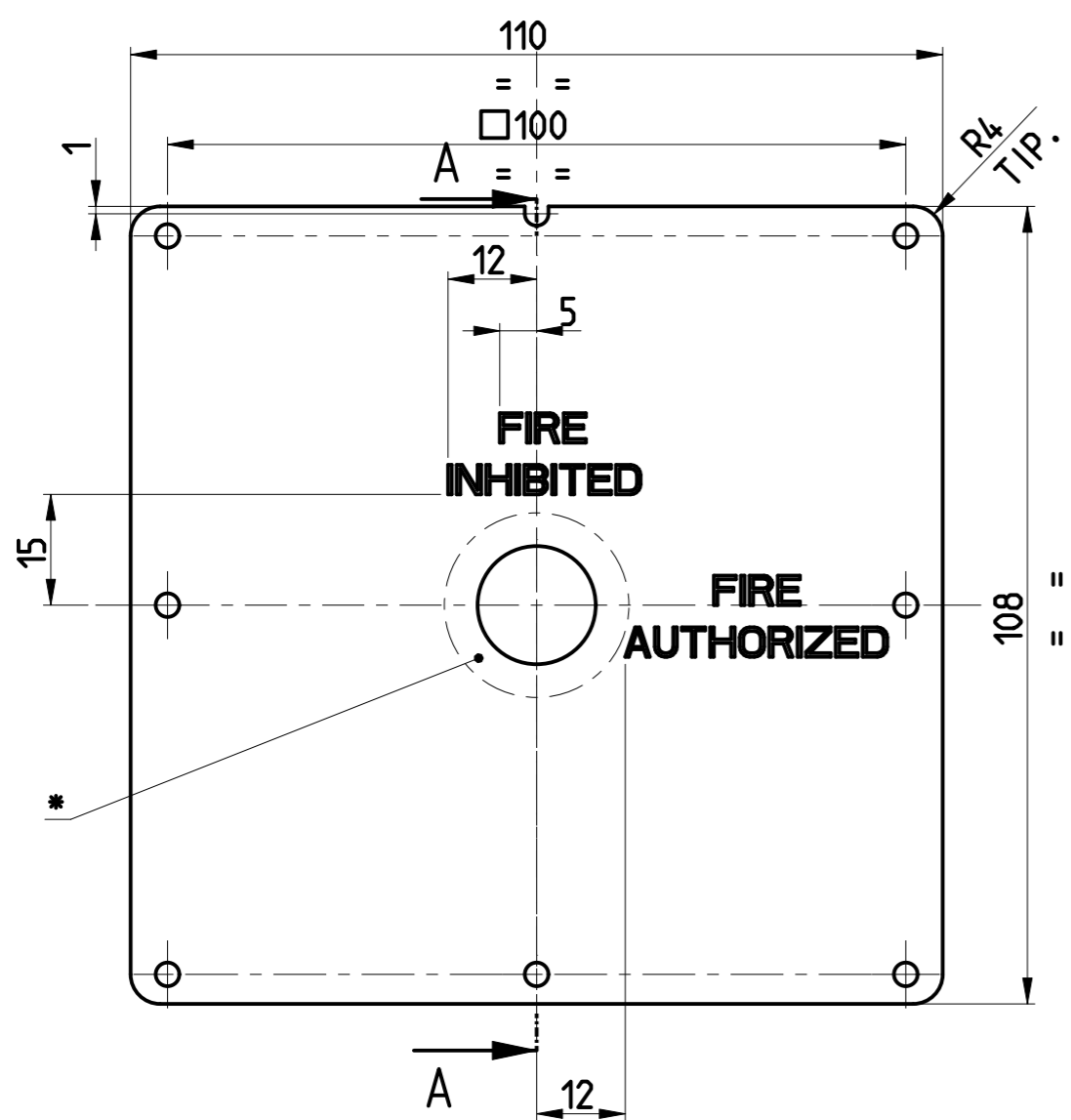
DISEGNATO DA	CONTROLLATO DA	APPROVATO DA	PESO (kg) WEIGHT (kg)	FORMATO DIS. DWG. SIZE
P.MIRABELLI	G.ALBERTINI	C.ZUCCOTTI		A4
STATO DEL DOCUMENTO DOCUMENT STATUS			SCALA SCALE	
			1:1	

TARGHETTA

oto melara UNA SOCIETA' FINMECCANICA		CL.MERC.O Q.COMM.CL.	LIV. CRIT. CRIT. LEV.	CAGE CODE	NUMERO DISEGNO / DRAWING NUMBER	REVISIONE REVISION	FOGLIO/FOGLI SHEET/SHEETS
		A	3	A0199	1955-31-081	00	1/1

Documento non pubblicato. Copyright DTD MELARA S.p.A. Tutti i diritti riservati.  
Unpublished document. Copyright DTD MELARA S.p.A. All rights reserved.

Ogni modifica deve essere eseguita direttamente sul modello C.A.D. originale  
Every change must be done directly on the original C.A.D. model



**VERNICIARE:**  
ESTERNO E BORDI LATERALI. VERNICIARE SECONDO SPEC. OTO-VE-0 PAR.6.2 ALL."A"  
A INTERNO, NELLA CAVA DELLA GUARNIZIONE E DOVE INDICATO CON \* SOLO RS4.  
PANTOGRAFARE LE SCRITTE PROFONDITA' 0.5mm  
ALTEZZA 4mm RIEMPIRE CON LACCA

MATERIALE / MATERIAL				TOLLERANZE GENERALI GENERAL TOLERANCES	
Lega EN AW-5083 Al Mg 4.5 Mn 0.7 O, H111,H116, H22/H32, H12, H14 EN 485-2				ISO 22768-m	
TRATTAMENTO / TREATMENT	PROTEZIONE / PROTECTION	VERNICIATURA / PAINTING	SMUSSI NON QUOTATI NOT DIMENSIONED CHAMFER	RAGGI NON QUOTATI NOT DIMENSIONED RADIUS	
	Rs 4		0.3x45°	0.3	
eccetto dove indicato tutte le quote tolleranze sono da intendersi dopo trattamento e/o protezione except where it is specified, all the drawing tolerances have to be considered after treatment and/or protection					
N° REV. REV.NUM.	NUMERO ORDINE DI MODIFICA CHANGE ORDER NUMBER	DESCRIZIONE REVISIONE REVISION DESCRIPTION			DATA REVISIONE REVISION DATE
0	E.C.N. 37133	PRIMA EMISSIONE FIRST ISSUE			09-03-2016
DISEGNATO DA PREPARED BY	CONTROLLATO DA CHECKED BY	APPROVATO DA APPROVED BY	COPERCHIO COVER		PESO (kg) WEIGHT (kg)
6.MICHELA	P.MIRABELLI	L.BIAGIONI			0.0
STATO DEL DOCUMENTO DOCUMENT STATUS					FORMATO DIS. DWG. SIZE
RILASCIATO ISSUED					A3
					SCALA SCALE
					1:1
FINMECCANICA DIVISIONE SISTEMI DI DIFESA		CL.MERC. & LIV. CRIT. & COMM.CL. CRIT. LEV.	CAGE CODE	NUMERO DISEGNO / DRAWING NUMBER	REVISIONE REVISION
		C 3	A0199	1976-72-101	0
		RQA-0001			FOGLIO/FOGLI SHEET/SHEETS
					1/1
Il simbolo Δ contenente il numero 1 o 2 identifica una caratteristica chiave che deve essere tracciata in accordo alla RQA0001 The symbol Δ with number 1 or 2 identifies a key feature that must be traceable in accordance with RQA0001					
Eccetto dove indicato le specifiche tecniche richiamate a disegno sono da intendersi all'ultima revisione Except where it is specified, all the quoted technical specifications are in the last available revision					
Documento non pubblicato. Copyright FINMECCANICA - Società per azioni. Tutti i diritti riservati. Unpublished document. Copyright FINMECCANICA - Limited Company. All rights reserved.					

NO. U.S.

QUOTE IN TOLLERANZA	
QUOTA E SIMBOLO	LIMITI

0-RING  $\phi$  1,78x400 ~

SOMMA SPEC. MIL-STD-417  
 T8.710 A4. B3. C2-E3. E5. F7. S1. Z.

COMUNANZE				
No.	TIPO	GR.	S.G.	C.T.
4				
5				
6				
7				
8				

R = 0,3 O SMUSSO 0,3x45°  
 DOVE NON INDICATO

LE ZONE INDICATE A  
 PREVED. SOPRAMETALLI DA  
 ASPORT. A STRUT. ASSIEMATA

TOLL. GEN. DEI PEZ. GREZZI STAMP. A CALDO  
 QUOTE LIN. ( $\phi$ COMP.) SINO A 18 +0,5 -0,3

> > > = 18 A 80 + 1-0,5  
 > > > A 80 + 2-0,8  
 ANGOLI + 1°

TOLL. GENER. DEI PEZZI GREZZI FUSI  
 DIAMETRI E LUNGH.  $\pm$  (0,5% +1MM.)

SPESS.  $\pm$  8% (MIN.  $\pm$  0,5 MM)  
 ANGOLI  $\pm$  2°

TOLLERANZE GENERALI DI LAVORAZIONE  
 QUOTE LIN ( $\phi$ COMP.): SINO A 18  $\pm$  0,15  
 > > > A 18 A 80  $\pm$  0,25  
 > > > A 80  $\pm$  0,4  
 ANGOLI  $\pm$  30'

No PART.	DENOMINAZIONE	No PEZZI	MATERIALE	TATTAMENTO	PROTEZIONE	NORMALE
	QUARINIZIONE					
	SOSTITUITO DA	SOSTITUISCE IL	GREZZO Kg.	FINITO Kg.		
1						
2						
3						
4						
5						
6						
7						
8						

INDICE E DESCRIZIONE DELLE MODIFICHE

DISEGN. VISTO DATA NOR.

h-t M 3-12 1996

S. P. A. **OTO - MELARA** LA SPEZIA

TITOLO 76 R

SCALA ORGINE: 1576-32-921

No DIS. 1576-32-210-00

TIP. CEE/EN 60714



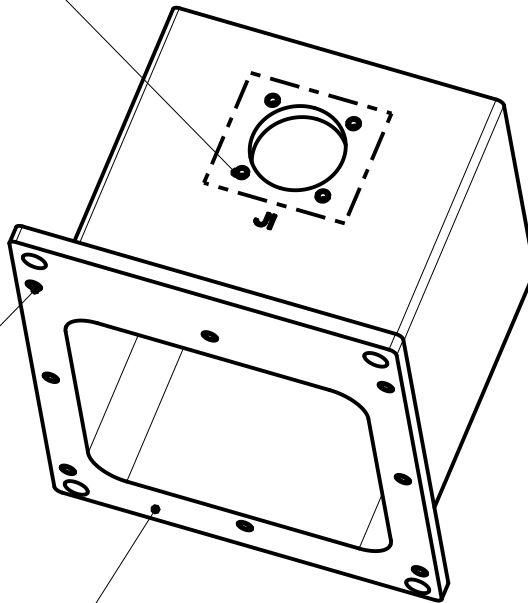
Ogni modifica deve essere eseguita direttamente sul modello C.A.D. originale  
 Every change must be done directly on the original C.A.D. model

1 2 3 4

4 - 2100-02500  
 Filetto riportato M2,5(x0,45)x1 d  
*Heli-coil M2,5(x0,45)x1 d*

8 - 2100-02501  
 Filetto riportato M3(x0,5)x1 d  
*Heli-coil M3(x0,5)x1 d*

1 - 100  
 SCATOLA  
 BOX



F  
E  
D  
C  
B  
A

MATERIALE / MATERIAL			TOLLERANZE GENERALI GENERAL TOLERANCES	
			ISO 22768-v	
TRATTAMENTO / TREATMENT	PROTEZIONE / PROTECTION	VERNICIATURA / PAINTING	SMUSSI NON QUOTATI NOT DIMENSIONED CHAMFER	RAGGI NON QUOTATI NOT DIMENSIONED RADIUS
			0.3x45°	0.3

eccetto dove indicato tutte le quote tolleranze sono da intendersi dopo trattamento e/o protezione  
 except where it is specified, all the drawing tolerances have to be considered after treatment and/or protection

N° REV. REV.NUM.	NUMERO ORDINE DI MODIFICA CHANGE ORDER NUMBER	DESCRIZIONE REVISIONE REVISION DESCRIPTION	DATA REVISIONE REVISION DATE
0	E.C.N. 37133	PRIMA EMISSIONE FIRST ISSUE	01-03-2016

DISEGNATO DA PREPARED BY	CONTROLLATO DA CHECKED BY	APPROVATO DA APPROVED BY	ASSIEME SCATOLA - BOX ASSEMBLY		PESO (kg) WEIGHT (kg)	FORMATO DIS. DWG. SIZE
G.MICHELA	P.MIRABELLI	L.BIAGIONI			0.0	A4
STATO DEL DOCUMENTO DOCUMENT STATUS					SCALA SCALE	
RILASCIATO ISSUED					1:2	



CL. MERC. & G. COMM. CL. CRIT. LEV.	LIV. CRIT. LEV.	CAGE CODE	NUMERO DISEGNO / DRAWING NUMBER	REVISIONE REVISION	FOGLIO/FOGLI SHEET/SHEETS
N	3	A0199	1976-72-800	0	1/1
RQA-0001					

Il simbolo  $\Delta$  contenente il numero 1 o 2 identifica una caratteristica chiave che deve essere tracciata in accordo alla RQA0001  
 The symbol  $\Delta$  with number 1 or 2 identifies a key feature that must be traceable in accordance with RQA0001

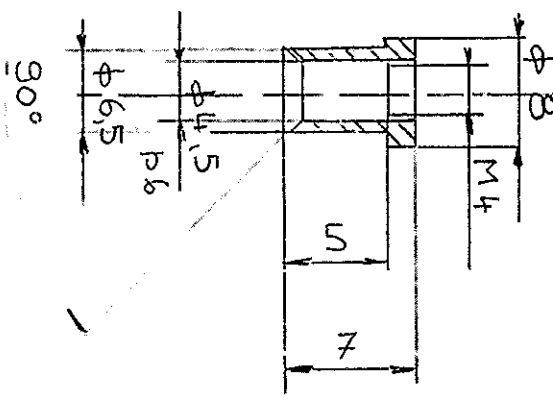
Eccetto dove indicato le specifiche tecniche richiamate a disegno sono da intendersi all'ultima revisione  
 Except where it is specified, all the quoted technical specifications are in the last available revision

Documento non pubblicato. Copyright FINMECCANICA - Società per azioni. Tutti i diritti riservati.  
 Unpublished document. Copyright FINMECCANICA - Limited Company. All rights reserved.

TOLLERANZE GENERALI DI LAVORAZIONE QUOTE LIN. (Ø COMP.): SINO A 18 ± 0,15 18 A 80 ± 0,25 80 ± 0,4 ANGOLI ± 30'	TOLL. GENER. DEI PEZZI GREZZI FUSI DIAMETRI E LUNGH.: ± (0,5% + 1MM) SPESS. ± 8% (MIN ± 0,5 MM) ANGOLI ± 2°	TOLL. GEN. DEI PEZ. GREZZI STAMP A CALDO QUOTE LIN. (Ø COMP.) SINO A 18 + 0,5 - 0,3 18 A 80 + 1 - 0,5 80 + 2 - 0,8 ANGOLI + 1°	R = 0,3 O SMUSSO 0,3x45° DOVE NON INDICATO					COMUNANZE							
			No.	TIPO	GR.	S.G.	C.T.	4	1576	38	903				
			1	1576	32	925		6							
			LE ZONE INDICATE A PREVED. SOPRAMETALLI DA ASPORT. A STRUT. ASSIEMATA					2	1576	38	905		7		
			3	1576	38	901		8							

No. DIS.

QUOTE IN TOLLERANZA	
QUOTA E SIMBOLO	LIMITI



No. PART.	DENOMINAZIONE	No. PEZZI	MATERIALE	TRATTAMENTO	PROTEZIONE	NORMALE
	BOCCOLA CAPTIVA		X 8 Cr Ni 1812 UNI 6900		R. S. 6	
	SOSTITUITO DA	SOSTITUISCE IL	GREZZO Kg.	FINITO Kg.		
INDICE E DESCRIZIONE DELLE MODIFICHE						
1					DISIGN.	DATA
2					VISTO	18-12-86
3						
4						
5						
6						
7						
8						

S.P.A.	TITOLO	SCALA	No. DIS.
<b>OTO - MELARA</b>	C.A.S. 25 B4	1	1576 - 38 - 128.00
LA SPEZIA		ORIGINE: 1576-32-921	
		TAVOLA:	

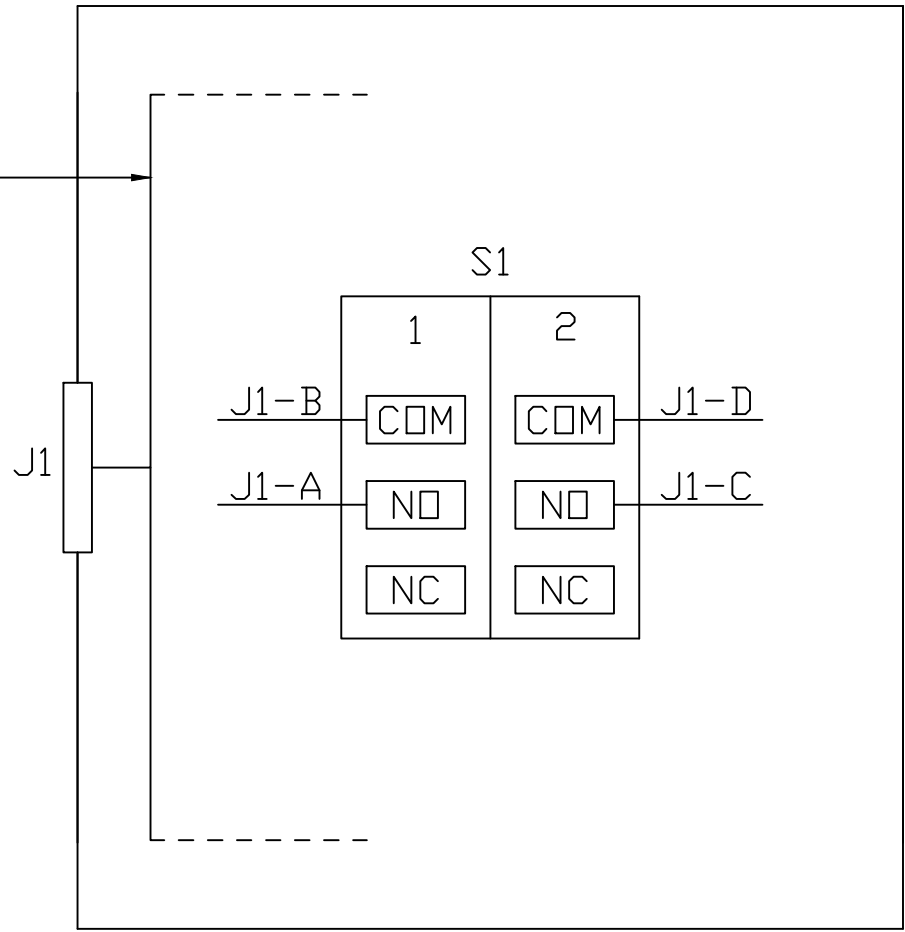
TEC. 56460 - 0130

NON MISURARE IN SCALA

EuroRidel SpA Milano

ATTENZIONE MODELLO C.A.D. - ogni modifica deve essere eseguita direttamente sul modello C.A.D. originale  
WARNING C.A.D. MODEL - every change must be done directly on the original C.A.D. model

① ② ③



AWG	SCH.	DA	POS	A	POS
16	NO	J1	A	S1	1-NO
16	NO		B		1-COM
16	NO		C		2-NO
16	NO		D		2-COM
			E		

N° REV. REV. NUM.	NUMERO ORDINE DI MODIFICA CHANGE ORDER NUMBER	DESCRIZIONE REVISIONE REVISION DESCRIPTION	DATA REVISIONE REVISION DATE
0	ECN 37133	PRIMA EMISSIONE FIRST ISSUE	03/12/2015

DISEGNATO DA PREPARED BY	CONTROLLATO DA CHECKED BY	APPROVATO DA APPROVED BY	TOPOGRAFICO UNITA' CIC		PESO (kg) WEIGHT (kg)	FORMATO DIS. DWG. SIZE
G. ALBERTINI	P. MIRABELLI	L. BIAGIONI	CIC UNIT TOPOGRAPHY			A4
STATO DEL DOCUMENTO DOCUMENT STATUS					SCALA SCALE	
RILASCIATO RELEASED						



CL. MERC. / COMM. CL.	LIV. CRIT. CRIT. LEV.	CAGE CODE	NUMERO DISEGNO / DRAWING NUMBER	REVISIONE REVISION	FOGLIO/FOGLI SHEET/SHEETS
0	2	A0199	1976-72-028	0	1/1

Documento non pubblicato. Copyright OTO MELARA S.p.A. Tutti i diritti riservati.  
Unpublished document. Copyright OTO MELARA S.p.A. All rights reserved.

**MAKE IN INDIA SELF CERTIFICATION**

As per Government Public procurement order no. P-45021/2/2017-BE-II dt.15.06.2017 & P45021/2/2017-PP(BE-II) dated 28.05.2018,29.5.2019, 04.6.2020 and amendment dated 16.09.2020, it is hereby certifying that we

.....  
..... (supplier name) are .....(Class-I/Class-II)  
local supplier and will meet the requirement of minimum local content of .....  
(50%/20%) as defined in public procurement order dated 04.6.2020 for material against Enquiry no.  
..... Details of  
location at which local value addition will be made is as follows: -  
.....  
.....  
.....

We also understand, false declarations will be in breach of the code of integrity under Rule 175(1)(i)(h) of the General Financial Rules for which a bidder or its successors can be debarred for up to two years as per Rule 151 (iii) of the general financial rules along with such other actions as may be permissible under law.

**Note:**

As per office order P-45021/102/2019-BE-II-Part (1) (E-50310) Dated 04/03/2021, Bidders can't claim itself as "Class-I local supplier/Class-II local suppliers" by claiming the service such as transportation, insurance, installation, commissioning, training & after sales service support like AMC/CMC etc. as local value addition. Bidder offering imported product will fall under the category of Non-Local supplier.

1. ALL VENDORS TO PROVIDE POINT WISE REPLY/CONFIRMATION ALONG WITH RELEVANT SUPPORTING DOCUMENTS TO EACH AND EVERY POINT OF **PRE-QUALIFICATION REQUIREMENT/PQR** FOR ALL ENQUIRY ITEMS. NONCOMPLIANCE OF THESE MAY LEAD TO REJECTION OF OFFER AS THESE ARE ESSENTIAL CONDITION FOR PARTICIPATING IN TENDER ENQUIRY.
2. DELIVERY SHALL BE IN STAGGERED MANNER AS PER BELOW TABLE:

SLN	MAT CODE	ITEM DISCREPTION	TOTAL QUANTITY (NOS.)	LOT	LOT QTY (NOS.)	Delivery. Schedule
1	W97045001460	BRIDGE FIRING VETO GEN. ASSY. AS PER P/N-197672021 SIZE: P/N 197672021	28	1 <sup>ST</sup>	16	30-06-2025
2	W97045001460_1	BRIDGE FIRING VETO GEN. ASSY. AS PER P/N-197672021 SIZE: P/N 197672021		2 <sup>ND</sup>	12	30-06-2026
3	W97045001479	CIC FIRING VETO GEN. ASSY. AS PER P/N-197672022 SIZE: P/N 197672022	28	1 <sup>ST</sup>	16	30-06-2025
4	W97045001479_1	CIC FIRING VETO GEN. ASSY. AS PER P/N-197672022 SIZE: P/N 197672022		2 <sup>ND</sup>	12	30-06-2026

3. EARLY DELIVERY IS ACCEPTABLE UPTO 2 MONTHS BEFORE SCHEDULED DELIVERY DATE.
4. KINDLY UPLOAD/ATTACH THE SPECIFICATION DETAILS/ CATALOGUE OF OFFERED ITEMS.
5. KINDLY **SUBMIT TECHNO-COMMERCIAL CHECKLIST** ALONG WITH YOUR OFFER.
6. KINDLY **SUBMIT PQR SHEET WITH SUPPORTING DOCUMENTS** ALONG WITH YOUR OFFER.
7. KINDLY **SUBMIT TECHNICAL PARAMETER CHECKLIST** ALONG WITH YOUR OFFER.
8. VENDOR TO CONFIRM TO PROVIDE TEST CERTIFICATES (CONTINUITY/IR TEST & FUNCTIONALITY TEST) AS PER MANUFACTURER'S STANDARD PRACTICE ALONG WITH THE MATERIAL.
9. VENDOR TO PROVIDE MATERIAL AND DIMENSIONAL TEST CERTIFICATES AS PER ENQUIRY DRAWING ALONG WITH THE MATERIAL
10. VENDOR TO PROVIDE BILL OF MATERIALS ALONG WITH THE MATERIAL
11. VENDOR TO PROVIDE CERTIFICATE OF CONFORMANCE ALONG WITH DISPATCH.
12. VENDOR TO PROVIDE PACKING AND IDENTIFICATION OF ALL ITEMS AS PER ENQUIRY AND PROVIDE REPORT ACCORDINGLY.
13. SUBMIT MAKE IN INDIA CERTIFICATE.
14. MSE/MII: THE SUPPLIER NEEDS TO SUBMIT/UPDATE MSE/MII CREDENTIALS ON GEM PORTAL DURING PROFILE UPDATION/ OFFER SUBMISSION STAGE. THE MSE DATA SUBMITTED IS CROSS VERIFIED BY GEM WITH GOVT. OF INDIA UDYAM/NSIC DATABASE THROUGH API INTEGRATION ON REAL TIME BASIS AND

FOR MII, A SELF DECLARATION IS BEING GIVEN AND AUTHENTICATED BY AADHAR OTP. IF THE SELLER FAILS TO CLAIM MSE/MII PROVISION ON GEM PORTAL AT PROFILE UPDATION/BID SUBMISSION STAGE, THE SAID SELLER WILL BECOME INELIGIBLE FOR GETTING THE MSE/MII BENEFITS FOR THAT BID AUTOMATICALLY. THE VENDOR CAN ALWAYS CONTACT THE GEM HELPDESK, IN CASE OF ANY ISSUES.

15. THE PRICE QUOTE BY BIDDER SHOULD BE INCLUSIVE OF GST & SHOULD BE ON BHEL HEEP HARIDWAR STORES BASIS.

16. BIDDER'S OFFER IS LIABLE TO BE REJECTED IF THEY DON'T UPLOAD ANY OF THE CERTIFICATES / DOCUMENTS SOUGHT IN THE BID DOCUMENT, ATC AND CORRIGENDUM IF ANY.

**17. BREACH OF CONTRACT CLAUSE:**

IN CASE OF BREACH OF CONTRACT, WHEREVER THE VALUE OF SECURITY INSTRUMENTS LIKE PERFORMANCE BANK GUARANTEE AVAILABLE WITH BHEL AGAINST THE SAID CONTRACT IS ATLEAST 10% OF THE CONTRACT VALUE, THE SAME BE ENCASHED. IN CASE THE VALUE OF THE SECURITY INSTRUMENTS AVAILABLE IS LESS THAN 10% OF THE CONTRACT VALUE, THE BALANCE AMOUNT BE RECOVERED FROM OTHER FINANCIAL REMEDIES (I.E. AVAILABLE BILLS OF THE CONTRACTOR, RETENTION AMOUNT, ETC. WITH BHEL) OR LEGAL REMEDIES BE PURSUED.

**18. ACTION AGAINST BIDDERS / VENDOR / SUPPLIER / CONTRACTOR IN CASE OF DEFAULT:**

IN ORDER TO PROTECT THE COMMERCIAL INTERESTS OF BHEL, BHEL SHALL TAKE ACTION AGAINST SUPPLIES / CONTRACTORS BY WAY OF SUSPENSION OF BUSINESS DEALINGS, WHO EITHER FAIL TO PERFORM OR ARE IN DEFAULT WITHOUT ANY REASONABLE CAUSE, CAUSE LOSS OF BUSINESS/ MONEY/ REPUTATION, INDULGE IN MALPRACTICES, CHEATING, BRIBERY, FRAUD OR ANY OTHER MISCONDUCT OR FORMATION OF CARTELS SO AS TO INFLUENCE THE BIDDING PROCESS OR INFLUENCE THE PRICE ETC.

SUSPENSION OF BUSINESS DEALINGS COULD BE IN THE FORM OF "HOLD" OR "BANNING" A SUPPLIER/ CONTRACTOR OR A BIDDER AND SHALL BE AS PER "GUIDELINES FOR SUSPENSION OF BUSINESS DEALINGS WITH SUPPLIERS/ CONTRACTORS" AVAILABLE AT BHEL'S WEBSITE <https://www.bhel.com/guidelines-suspension-business-dealings-supplierscontractors>

19. BIDDERS ARE ADVISED TO CHECK APPLICABLE GST ON THEIR OWN BEFORE QUOTING. BUYER WILL NOT TAKE ANY RESPONSIBILITY IN THIS REGARDS. GST REIMBURSEMENT WILL BE AS PER ACTUALS OR AS PER APPLICABLE RATES (WHICHEVER IS LOWER), SUBJECT TO THE MAXIMUM OF QUOTED GST %.

20. BIDDER SHALL SUBMIT THE FOLLOWING DOCUMENTS ALONG WITH THEIR BID FOR VENDOR CODE CREATION:

**A. COPY OF PAN CARD B. COPY OF GSTIN C. COPY OF MSE CERIFICATE**

21. DEDICATED /TOLL FREE TELEPHONE NO. FOR SERVICE SUPPORT: BIDDER/OEM MUST HAVE DEDICATED/TOLL FREE TELEPHONE NO. FOR SERVICE SUPPORT.

22. DATA SHEET OF THE PRODUCT(S) OFFERED IN THE BID, ARE TO BE UPLOADED ALONG WITH THE BID DOCUMENTS. BUYERS CAN MATCH AND VERIFY THE DATA SHEET WITH THE PRODUCT SPECIFICATIONS OFFERED. IN CASE OF ANY UNEXPLAINED MISMATCH OF TECHNICAL PARAMETERS, THE BID IS LIABLE FOR REJECTION.

23. SCOPE OF SUPPLY (BID PRICE TO INCLUDE ALL COST COMPONENTS): ONLY SUPPLY OF GOODS.

24. PRODUCTS SUPPLIED SHALL BE NONTOXIC AND HARMLESS TO HEALTH. IN THE CASE OF TOXIC MATERIALS, MATERIAL SAFETY DATA SHEET MAY BE FURNISHED ALONG WITH THE MATERIAL.

25. WHILE GENERATING INVOICE IN GEM PORTAL, THE SELLER MUST UPLOAD SCANNED COPY OF GST INVOICE AND THE SCREENSHOT OF GST PORTAL CONFIRMING PAYMENT OF GST.

**26. PAYMENT TERMS SHALL BE AS PER FOLLOWINGS:**

- a) **FOR NON-MSES BIDDER:** 100% payment along with taxes, freight & insurance will be made after receipt and acceptance of material and within 90 days from the date of invoice subject to submission of non-discrepant documents within 15 days of supply as per terms and conditions of Purchase Order (THIS IS IN SUPERSESION OF 10 DAYS' TIME AS PROVIDED IN CLAUSE 12 OF GEM GTC).
- b) **FOR MSES BIDDER:** For MSEs (covered under MSME Act) which are registered and periodically renewed with BHEL, the payment will be made within 45 days or as prescribed in the relevant act. Benefits of MSE (such as EMD Waiver, Tender fee exemption, Price preference, Payment preference etc.) will be given only to those MSE Vendors who are manufacturers of offered items against the NIT. No MSE benefits shall be provided to Agents / Stockists /Dealers / Traders etc. for the items offered but not manufactured by themselves.”
- c) **FOR MEDIUM ENTERPRISES:** 100% payment along with taxes, freight & insurance will be made after receipt and acceptance of material and within 60 days from the date of invoice subject to submission of non-discrepant documents within 15 days of supply as per terms and conditions of Purchase Order.
- d) Please note that vendor to adhere to the payment terms as per above. No deviation in payment terms shall be accepted. Vendor to submit their offer accordingly.