



REQUIREMENT OF PROXIMITY SWITCH ASSEMBLY & PROXIMITY SWITCH.

The Heavy Electricals Equipment Plant (HEEP) located in Haridwar, India is one of the major manufacturing plants of Bharat Heavy Electricals Ltd. The core business of HEEP includes design and manufacture of large steam and gas turbines, turbo generators, Defense Items and so on.

Details of items details as below:

| SLN | MAT CODE | ITEM DISCREPTION | QUANTITY (NOS) | Lot No. | Lot Qty.(NOS) | Dly. Schedule |
|-----|----------------|--|----------------|-----------------|---------------|---------------|
| 1 | W97050084018 | PROXIMITY SWITCH ASSEMBLY SIZE: P/N 157684014(OLDP/N157684011) | 75 | 1 ST | 24 | 31.10.2024 |
| 2 | W97050084018_1 | | | 2 ND | 27 | 31.10.2025 |
| 3 | W97050084018_2 | | | 3 RD | 24 | 31.10.2026 |
| 4 | W97050084026 | PROXIMITY SWITCH ASSY SIZE: P/N 157684013(OLDP/N157684010) | 74 | 1 ST | 23 | 31.10.2024 |
| 5 | W97050084026_1 | | | 2 ND | 27 | 31.10.2025 |
| 6 | W97050084026_2 | | | 3 RD | 24 | 31.10.2026 |
| 7 | W97052602121 | PROXIMITY SWITCH IFRM12P1703/S14L SIZE: P/N 865PS0093 | 175 | 1 ST | 56 | 31.10.2024 |
| 8 | W97052602121_1 | | | 2 ND | 63 | 31.10.2025 |
| 9 | W97052602121_2 | | | 3 RD | 56 | 31.10.2026 |
| 10 | W97052602130 | PROXIMITY SWITCH IFRM12N1703/S14L SIZE: P/N 865PS0031 | 25 | 1 ST | 8 | 31.10.2024 |
| 11 | W97052602130_1 | | | 2 ND | 9 | 31.10.2025 |
| 12 | W97052602130_2 | | | 3 RD | 8 | 31.10.2026 |

1. EARLY DELIVERY ACCEPTABLE FOR LOT 1
2. EARLY DELIVERY ACCEPTABLE 2 MONTHS BEFORE SCHECHDULED DATE FOR LOT 2&3.
3. ALL VENDORS TO PROVIDE POINT WISE REPLY/CONFIRMATION ALONG WITH RELEVANT SUPPORTING DOCUMENTS TO EACH AND EVERY POINT OF **PRE-QUALIFICATION REQUIREMENT/PQR** FOR ALL ENQUIRY ITEMS. NONCOMPLIANCE OF THESE MAY LEAD TO REJECTION OF OFFER AS THESE ARE ESSENTIAL CONDITION FOR PARTICIPATING IN TENDER ENQUIRY.
4. KINDLY UPLOAD/ATTACH THE SPECIFICATION DETAILS/ CATALOGUE OF OFFERED ITEMS.
5. KINDLY **SUBMIT TECHNO-COMMERCIAL CHECKLIST** ALONG WITH YOUR OFFER.
6. KINDLY **SUBMIT PQR SHEET WITH SUPPORTING DOCUMENTS** ALONG WITH YOUR OFFER.

7. KINDLY **SUBMIT SIGNED & STAMPED TECHNICAL PARAMETER CHECKLIST** ALONG WITH YOUR OFFER.
8. FOR PROXIMITY SWITCHES W97050084018 & W97050084026:
VENDORS TO CONFIRM FOR SUBMISSION OF TEST CERTIFICATES AND INSPECTION REPORTS AS PER ATTACHED BHEL SQP NO. "QA/DF/QP/004 REV. 00 ALONG WITH THE MATERIAL DELIVERY. VENDORS TO PROVIDE ENDORSED COPY OF QP.
9. FOR PROXIMITY SWITCHES- W97052602121 & W97052602130:
 - A. VENDOR TO CONFIRM TO PROVIDE TEST CERTIFICATES AS PER MANUFACTURER'S STANDARD PRACTICE INCLUDING DOCUMENTS COFORMING TO ENQUIRY SPECIFIED PART NO. ALONG WITH THE MATERIAL.
 - B. VENDOR TO CONFIRM TO PROVIDE ORIGINAL MANUFACTURER'S CERTIFICATE OF CONFORMANCE ALONG WITH MATERIAL DISPATCH.
 - C. VENDOR TO CONFIRM TO PROVIDE IDENTIFICATION OF ALL ITEMS AND PROVIDE REPORT ACCORDINGLY.
10. VENDOR TO **SUBMIT MAKE IN INDIA SELF CERTIFICATION** AS PER FORMAT GIVEN ALONG WITH THE ENQUIRY.

QUALIFYING CONDITIONS

QUALIFYING CONDITIONS FOR PROXIMITY SWITCH ASSY- W97050084018 & W97050084026

Only those vendors should quote:

| Sl. | PQR Requirement | Vendor Response | Vendor Response (Yes / No / Enclosed) |
|-----|--|----------------------------|---------------------------------------|
| 1. | who are capable to manufacture or supply proximity switch assy as per the drawings/BOM ^(#) , tech. sheet/spec specified by BHEL | Vendor to confirm | |
| 2. | who has previous experience of manufacturing and supplying proximity switch/sensor. <u>Vendor to submit relevant documentary proof viz. PO & dispatch documents for the above.</u> | Vendor to submit | |
| 3. | BHEL reserves the right to verify information submitted by vendor. In case the information is found to be false/incorrect, the offer shall be rejected. | Vendor to accept & confirm | |

(#): Part drawings will be provided after signing of Non-disclosure Agreement.

QUALIFYING CONDITIONS

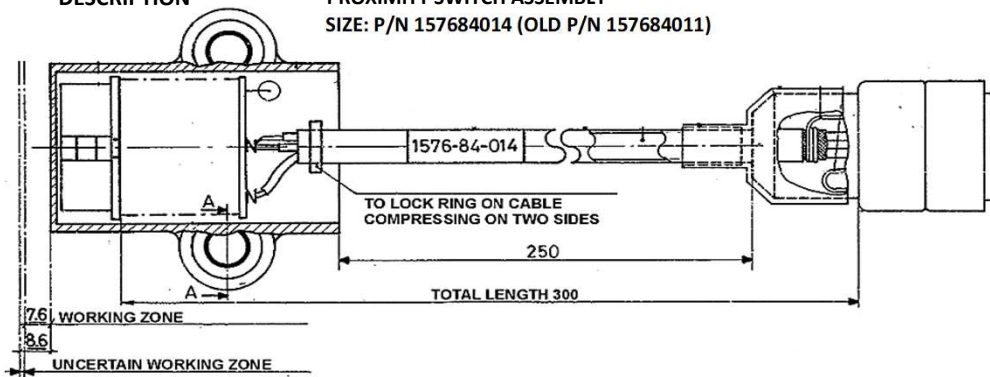
QUALIFYING CONDITIONS FOR PROXIMITY SWITCHES- W97052602121 & W97052602130

Only those vendors should quote:

| Sl. | PQR Requirement | Vendor Response | Vendor Response (Yes / No) |
|-----|---|-----------------------------|----------------------------|
| 1. | who can manufacture or supply PROXIMITY SWITCHES IFRM12P1703/S14L & IFRM12N1703/S14L | Vendor to confirm & specify | |
| 2. | who can provide datasheet for offered items | Vendor to confirm | |
| 3. | Point numbers 1 to 2 are the Mandatory Qualification Requirements. Offers of vendors not meeting these requirements will NOT be considered. | Vendor to accept & confirm | |

TECHNICAL PARAMETERS RESPONSE - TO BE FILLED BY VENDOR

ITEM CODE W97050084018
 DESCRIPTION PROXIMITY SWITCH ASSEMBLY
 SIZE: P/N 157684014 (OLD P/N 157684011)



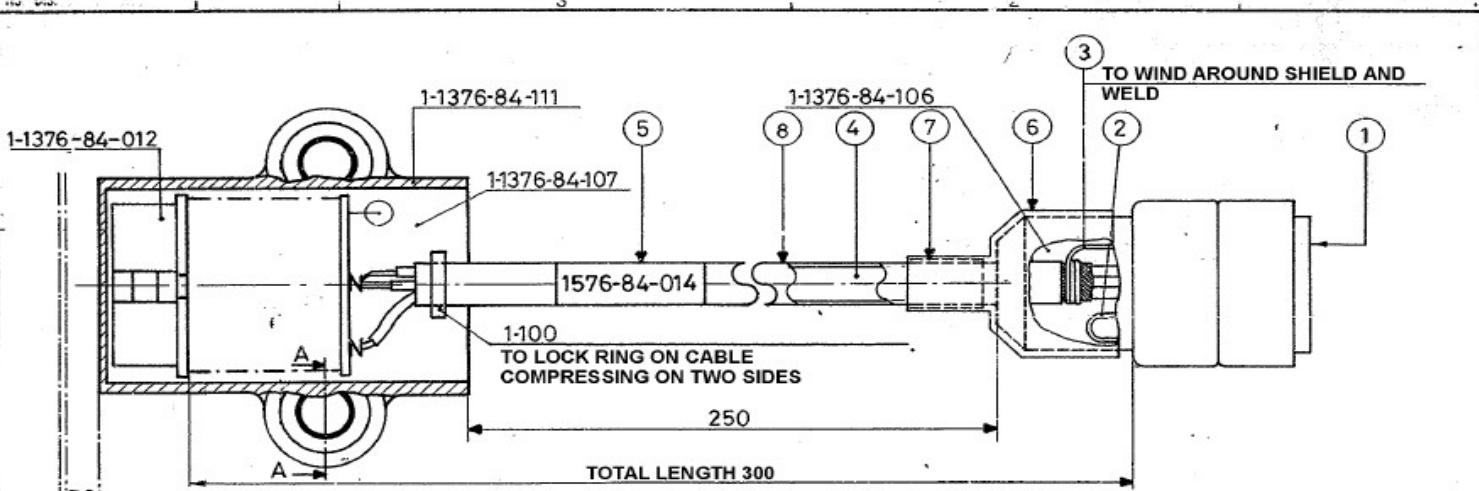
| SN. | DESCRIPTION | TECHNICAL PARAMETERS | VENDOR RESPONSE <i>(Details of offered item to be filled by vendor)</i> |
|---------------------------------------|---|---|--|
| 1 | DIMENSIONS | AS PER DRAWING 157684014 (OLD P/N 157684011) | |
| 2 | INSULATION RESISTANCE | 20 M OHM | |
| 3 | PROXIMITY TYPE | INDUCTIVE | |
| 4 | SENSING DISTANCE: OBJECT IS BETWEEN | 7.6 MM – 8.6 MM | |
| 5 | SUPPLY VOLT | 18 V DC | |
| 6 | O/P VOLT | +17 TO +18 V DC | |
| 7 | CABLE TYPE | 3 CORE SHIELDED | |
| 8 | OVERALL LENGTH | 300 MM | |
| 9 | OPERATING TEMPERATURE | -5 TO +70 DEG CELSIUS | |
| 10 | PROTECTION | IP67 | |
| 11 | PS ENCLOSURE | GF NYLON OR EQUIVALENT. | |
| 12 | END CONNECTOR | MS3126P10-6P | |
| 13 | MATERIAL OF CONSTRUCTION | AS PER BOM (EQUIVALENT MATERIAL WITH BHEL PERMISSION.) | |
| 14 | TESTS CERTIFICATES SHALL BE PROVIDED FOR THE TESTS CONDUCTED IN EACH ASSEMBLY | VIZ. RESISTANCE/CONTINUITY/IR/ SHORT CIRCUIT/ SENSING DISTANCE AND AS PER MANUFACTURER'S STANDARD <i>(DETAILS: AS PER BHEL QP)</i> | |
| 15 | TYPE TEST SHALL BE CONDUCTED OR CERTIFICATES OF TYPE TESTS CONDUCTED ON SAME DESIGN SHALL BE SUBMITTED. | TYPE TESTS: A) IMMERSION TEST; B) VIBRATION TEST C) HIGH TEMPERATURE TEST <i>(DETAILS: AS PER BHEL QP;</i> <i>TYPE TESTS FOR NEW DESIGNS AS PER NABL/GOVT/GOVT APPROVED LAB). TYPE TESTS SHALL BE WAIVED-OFF AFTER REVIEW OF TYPE TEST CERTIFICATES BY BHEL, IF THE OFFERED ITEM IS PROVEN AND THE TYPE TESTS ARE ALREADY CONDUCTED EARLIER IN THE SAME DESIGN.</i> | |
| 16 | CERTIFICATE OF CONFORMANCE (COC) SHALL BE PROVIDED | - | |
| 17 Vendor Remarks/Deviations (If Any) | | | |

QUOTE IN TOLLERANZA
 QUOTA E SIMBOLO LIMITI

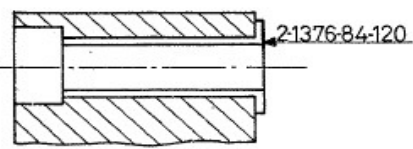
DOVE NON INDICATO SINO A 18 ± 0.5 - 0.3
 LE ZONE INDICATE A 1-0.5
 PREVEDI SOPRALLELLI DA 2-0.8
 ASPORTI A STRUTTI ASSIEMMATI 3-1.5/2.8/3.4/4/5/6/7/8

QUOTE LINEE (COMP.) SINO A 18 ± 0.5 - 0.3
 SINO A 18 ± 0.5 - 0.3
 SINO A 18 ± 0.5 - 0.3
 SINO A 18 ± 0.5 - 0.3

DIAMETRI E LUNGHE ± 0.05/+ 0.10
 SPESSE ± 0.05 (MIN ± 0.10)
 ANGOLI ± 2°



7.6 WORKING ZONE
 8.6
 UNCERTAIN WORKING ZONE



SEC. A-A

| CABLE COND. COLOUR | FROM | POS. | TO | POS. | FUNCTION |
|--------------------|-----------|-----------|--------|--------------|----------|
| RED | CONNECTOR | A | SENSOR | 1 | INPUT |
| BLACK | | B | | 2 | GROUND |
| WHITE | | C | | 3 | SIGNAL |
| | | D | - | COLL. SHIELD | |
| | E | CONNECTOR | F | | SAFETY |

Controlled --for use for development purpose only, under Non-Disclosure and Proprietary Information Agreement between the party and BHEL. Not be resold, diverted, transferred, or otherwise be disposed of, to any other country or to any person other than the authorized end-user or consignee(s), either in their original form or after being incorporated into other end-items, without first obtaining approval from-BHEL or use of an applicable exemption.

PROPRIETARY DATA
 LIMITED RIGHTS OF TECHNICAL DATA
 THE TECHNICAL DATA SET FORTH HEREIN IS SUBJECT TO THE TERMS AND CONDITIONS OF LICENSE AGREEMENT.
 THE TECHNICAL DATA CONTAINED HEREIN IS RESTRICTED AS TO USE, DUPLICATION OR DISCLOSURE AS PER TERMS AND CONDITIONS OF THE AGREEMENT.

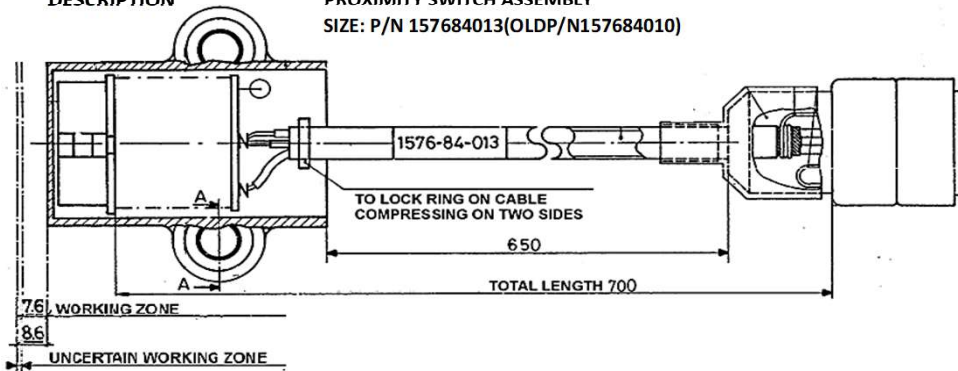
| No PART. | DENOMINAZIONE | No PEZZI | MATERIALE | TRATTAMENTO | PROTEZIONE | NORMALE |
|--|---------------|----------------|------------|---------------------------------------|------------|-------------------------|
| | SOSTITUITO DA | SOSTITUISCE IL | GREZZO Kg. | FINITO Kg. | | |
| INDICE E DESCRIZIONE DELLE MODIFICHE | | | | | | DISEGN. VISTO DATA NOR. |
| 1 | | | | | | |
| 2 | | | | | | |
| 3 | | | | | | |
| 4 | | | | | | |
| 5 | | | | | | |
| 6 | | | | | | |
| 7 | | | | | | |
| 8 | | | | | | |
| S. p. A. OTO - MELARA LA SPEZIA | | | | TITOLO PS CABLE | | SCALA 2/1 |
| | | | | ORIGINE: 1576-84-004 | | TAVOLA: |
| | | | | No. US. 1576-84-014 00 A ₃ | | |
| A TERMINI DI LEGGE È VIETATO RIPRODURRE O COMUNICARE A TERZI IL CONTENUTO DEL PRESENTE DISEGNO | | | | | | |

| Level | Part No. | Ref. | Description | Unit | Q.ty | Commercial code | Manufacturer |
|-------|-------------------------------------|------|--|------|------|-----------------------------------|--------------|
| 0 | 157684014 (Old P/N 157684011) | | PROXIMITY SWITCH ASSY | | | | |
| 1 | 157684100 | | RING | ea | 1.0 | | |
| 1 | 137684120 | | BUSH | ea | 2.0 | | |
| 1 | 137684106 | | RESIN | GR | 20.0 | | |
| 1 | 810BA0885 | 1 | CONNECTOR, MS3126P10-6P; or, MS3476W10-6P | ea | 1.0 | MS3126P10-6P; or, MS3476W10-6P | P.Q.O./10-2 |
| 1 | 815CA0165 | 4 | WIRE, 3SJ-22 | ME | 0.3 | M24643/43-10UO | P.Q.O./15-4 |
| 1 | 137684107 | | STYCAST | GR | 40.0 | | |
| 1 | 815UN0029 | 2 | WIRE, M22759/16-22-9 | ME | 0.1 | M22759/16-22-9 | P.Q.O./15-10 |
| 1 | 815UN0028 | 3 | WIRE, M22759/16-22-4 | ME | 0.15 | M22759/16-22-4 | P.Q.O./15-10 |
| 1 | 137684111 | | CONTAINER (MATERIAL: POLYCARBONATE GLASS FIBER CHARGED BLACK COLOR) | ea | 1.0 | | |
| 1 | 137684012 | | P.S. PRINTED CIRCUIT | ea | 1.0 | | |
| 2 | 137684102 | | P.S. PRINTED CIRCUIT | ea | 1.0 | | |
| 2 | 137684013 | | CORE ASSY | ea | 1.0 | | |
| 3 | 137684100 | | CORE | ea | 1.0 | | |
| 3 | 137684101 | | COIL BODY | ea | 1.0 | | |
| 3 | 137684108 | | COIL WIRE | ME | 3.0 | | |
| 3 | 137684112 | | COIL WIRE | ME | 5.0 | | |
| 2 | 137684110 | | PIN | ea | 1.0 | | |
| 2 | 127684131 | | INSULATOR PLATE | ME | 0.15 | | |
| 2 | 127684132 | | WIRE | ME | 0.15 | | |
| 2 | 137684103 | | P.S. PRINTED CIRCUIT | ea | 1.0 | | |
| 2 | 137684109 | | WASHER | ea | 1.0 | | |
| 1 | 816TE0025 | 8 | SLEEVE, HT SHRINKABLE DR25-1/4 | ME | 0.28 | DR25-1/4 | RAYCHEM |
| 1 | 816TE0064 | 5 | SLV, HT SHRINKBL M23053/5-107-9 | ME | 0.5 | M23053/5-107-9 | P.Q.O./16-1 |
| 1 | 816TE0022 | 6 | SLEEVE, HT SHRINKABLE ATUM 24/8 | ME | 0.4 | ATUM-24/8 | RAYCHEM |
| 1 | 816TE0023 | 7 | SLEEVE, HT SHRINKABLE ATUM 12/4 | ME | 0.2 | ATUM-12/4 | RAYCHEM |

TECHNICAL PARAMETERS RESPONSE - TO BE FILLED BY VENDOR

ITEM CODE
DESCRIPTION

W97050084026
PROXIMITY SWITCH ASSEMBLY
SIZE: P/N 157684013(OLDP/N157684010)




| SN. | DESCRIPTION | TECHNICAL PARAMETERS | VENDOR RESPONSE <i>(Details of offered item to be filled by vendor)</i> |
|-----|---|---|--|
| 1 | DIMENSIONS | AS PER DRAWING P/N 157684013(OLDP/N157684010) | |
| 2 | INSULATION RESISTANCE | 20 M OHM | |
| 3 | PROXIMITY TYPE | INDUCTIVE | |
| 4 | SENSING DISTANCE: OBJECT IS BETWEEN | 7.6 MM – 8.6 MM | |
| 5 | SUPPLY VOLT | 18 V DC | |
| 6 | O/P VOLT | +17 TO +18 V DC | |
| 7 | CABLE TYPE | 3 CORE SHIELDED | |
| 8 | OVERALL LENGTH | 700 MM | |
| 9 | OPERATING TEMPERATURE | -5 TO +70 DEG CELSIUS | |
| 10 | PROTECTION | IP67 | |
| 11 | PS ENCLOSURE | GF NYLON OR EQUIVALENT. | |
| 12 | END CONNECTOR | MS3126P10-6P ; or, MS3476W10-6P | |
| 13 | MATERIAL OF CONSTRUCTION | AS PER BOM (EQUIVALENT MATERIAL WITH BHEL PERMISSION.) | |
| 14 | TESTS CERTIFICATES SHALL BE PROVIDED FOR THE TESTS CONDUCTED IN EACH ASSEMBLY | VIZ. RESISTANCE/CONTINUITY/IR/ SHORT CIRCUIT/ SENSING DISTANCE AND AS PER MANUFACTURER'S STANDARD <i>(DETAILS: AS PER BHEL QP)</i> | |
| 15 | TYPE TEST SHALL BE CONDUCTED OR CERTIFICATES OF TYPE TESTS CONDUCTED ON SAME DESIGN SHALL BE SUBMITTED. | TYPE TESTS: A) IMMERSION TEST; B) VIBRATION TEST C) HIGH TEMPERATURE TEST <i>(DETAILS: AS PER BHEL QP; TYPE TESTS FOR NEW DESIGNS AS PER NABL/GOVT/GOVT APPROVED LAB). TYPE TESTS SHALL BE WAIVED-OFF AFTER REVIEW OF TYPE TEST CERTIFICATES BY BHEL, IF THE OFFERED ITEM IS PROVEN AND THE TYPE TESTS ARE ALREADY CONDUCTED EARLIER IN THE SAME DESIGN.</i> | |
| 16 | CERTIFICATE OF CONFORMANCE (COC) SHALL BE PROVIDED | - | |
| 17 | Vendor Remarks/Deviations (If Any) | | |

| Lev | N.Part/Doc | Ref. | Description | Unit | Q.ty | Commercial code | Manufacturer |
|-----|-------------------------------------|------|--|------|------|-----------------------------------|--------------|
| 0 | 157684013 (Old P/N 157684010) | | PROXIMITY SWITCH ASSY | | | | |
| 1 | 815CA0165 | 4 | WIRE, 3SJ-22 | ME | 0.7 | M24643/43-10UO | P.Q.O./15-4 |
| 1 | 137684107 | | STYCAST | GR | 40.0 | | |
| 1 | 137684106 | | RESIN | GR | 20.0 | | |
| 1 | 810BA0885 | 1 | CONNECTOR, MS3126P10-6P; or, MS3476W10-6P | ea | 1.0 | MS3126P10-6P; or, MS3476W10-6P | P.Q.O./10-2 |
| 1 | 157684100 | | RING | ea | 1.0 | | |
| 1 | 137684120 | | BUSH | ea | 2.0 | | |
| 1 | 137684111 | | CONTAINER (MATERIAL: POLYCARBONATE GLASS FIBER CHARGED BLACK COLOR) | ea | 1.0 | | |
| 1 | 137684012 | | P.S. PRINTED CIRCUIT | ea | 1.0 | | |
| 2 | 137684102 | | P.S. PRINTED CIRCUIT | ea | 1.0 | | |
| 2 | 137684013 | | CORE ASSY | ea | 1.0 | | |
| 3 | 137684100 | | CORE | ea | 1.0 | | |
| 3 | 137684101 | | COIL BODY | ea | 1.0 | | |
| 3 | 137684108 | | COIL WIRE | ME | 3.0 | | |
| 3 | 137684112 | | COIL WIRE | ME | 5.0 | | |
| 2 | 137684110 | | PIN | ea | 1.0 | | |
| 2 | 127684131 | | INSULATOR PLATE | ME | 0.15 | | |
| 2 | 127684132 | | WIRE | ME | 0.15 | | |
| 2 | 137684103 | | P.S. PRINTED CIRCUIT | ea | 1.0 | | |
| 2 | 137684109 | | WASHER | ea | 1.0 | | |
| 1 | 815UN0028 | 3 | WIRE, M22759/16-22-4 | ME | 0.15 | M22759/16-22-4 | P.Q.O./15-10 |
| 1 | 815UN0029 | 2 | WIRE, M22759/16-22-9 | ME | 0.1 | M22759/16-22-9 | P.Q.O./15-10 |
| 1 | 816TE0022 | 6 | SLEEVE, HT SHRINKABLE ATUM 24/8 | ME | 0.4 | ATUM-24/8 | RAYCHEM |
| 1 | 816TE0023 | 7 | SLEEVE, HT SHRINKABLE ATUM 12/4 | ME | 0.2 | ATUM-12/4 | RAYCHEM |
| 1 | 816TE0025 | 8 | SLEEVE, HT SHRINKABLE DR25-1/4 | ME | 0.68 | DR25-1/4 | RAYCHEM |
| 1 | 816TE0064 | 5 | SLV, HT SHRINKBL M23053/5-107-9 | ME | 0.5 | M23053/5-107-9 | P.Q.O./16-1 |

TECHNO-COMMERCIAL CHECKLIST

| SL. NO. | TERMS & CONDITION | VENDOR CONFIRMATION /REMARKS / REPLY |
|---|--|--------------------------------------|
| TENDER DETAILS | | |
| 1 | BIDDER NAME | |
| 2 | GEM BID NO | |
| QUALITY & TECHNICAL REQUIREMENTS | | |
| 3 | ATTACHED FOLLOWING DOCUMENTS DULY FILLED, SIGNED & STAMPED ALONG WITH OFFER: <ul style="list-style-type: none">• PQR SHEET ALONG WITH SUPPORTING DOCUMENTS• TECHNO-COMMERCIAL CHECKLIST• TECHNICAL PARAMETER CHECKLIST• ENDORSED BHEL SQP | |
| 4 | <u>FOR PROXIMITY SWITCHES W97050084018 & W97050084026:</u> VENDORS TO CONFIRM FOR SUBMISSION OF TEST CERTIFICATES AND INSPECTION REPORTS AS PER ATTACHED BHEL SQP NO. "QA/DF/QP/004 REV. 00 ALONGWITH THE MATERIAL DELIVERY. VEDNORS TO PROVIDE ENDORSED COPY OF QP | |
| 5 | <u>FOR PROXIMITY SWITCHES- W97052602121 & W97052602130:</u> | |
| 5.1 | VENDOR TO CONFIRM TO PROVIDE TEST CERTIFICATES AS PER MANUFACTURER'S STANDARD PRACTICE INCLUDING DOCUMENTS COFORMING TO ENQUIRY SPECIFIED PART NO. ALONG WITH THE MATERIAL. | |
| 5.2 | VENDOR TO CONFIRM TO PROVIDE ORIGINAL MANUFACTURER'S CERTIFICATE OF CONFORMANCE ALONG WITH MATERIAL DISPATCH | |
| 5.3 | VENDOR TO CONFIRM TO PROVIDE IDENTIFICATION OF ALL ITEMS AND PROVIDE REPORT ACCORDINGLY | |
| COMMERICAL REMARKS | | |
| 6 | VENDOR TO CONFIRM SUPPLY AS PER BELOW DELIVERY SCHEDULE: LOT 1 : 31-10-2024 LOT 2 : 31-10-2025 LOT 3 : 31-10-2026 | |
| 7 | ITEM IS TO BE SUPPLIED AS PER ITEM DESCRIPTION/ SPECIFICATION/DRAWING. | |
| 8 | SUBMIT MAKE IN INDIA SELF CERTIFICATION AS PER FORMAT GIVEN ALONG WITH THE ENQUIRY | |
| 9 | KINDLY UPLOAD/ATTACH THE SPECIFICATION DETAILS/ CATALOGUE OF OFFERED ITEMS. | |

| | | |
|----|---|--|
| 10 | <p>BREACH OF CONTRACT CLAUSE: IN CASE OF BREACH OF CONTRACT, WHEREVER THE VALUE OF SECURITY INSTRUMENTS LIKE PERFORMANCE BANK GUARANTEE AVAILABLE WITH BHEL AGAINST THE SAID CONTRACT IS ATLEAST 10% OF THE CONTRACT VALUE, THE SAME BE ENCASHED. IN CASE THE VALUE OF THE SECURITY INSTRUMENTS AVAILABLE IS LESS THAN 10% OF THE CONTRACT VALUE, THE BALANCE AMOUNT BE RECOVERED FROM OTHER FINANCIAL REMEDIES (I.E. AVAILABLE BILLS OF THE CONTRACTOR, RETENTION AMOUNT, ETC. WITH BHEL) OR LEGAL REMEDIES BE PURSUED.</p> | |
| 11 | <p>ACTION AGAINST BIDDERS / VENDOR / SUPPLIER / CONTRACTOR IN CASE OF DEFAULT: IN ORDER TO PROTECT THE COMMERCIAL INTERESTS OF BHEL, BHEL SHALL TAKE ACTION AGAINST SUPPLIES / CONTRACTORS BY WAY OF SUSPENSION OF BUSINESS DEALINGS, WHO EITHER FAIL TO PERFORM OR ARE IN DEFAULT WITHOUT ANY REASONABLE CAUSE, CAUSE LOSS OF BUSINESS/ MONEY/ REPUTATION, INDULGE IN MALPRACTICES, CHEATING, BRIBERY, FRAUD OR ANY OTHER MISCONDUCT OR FORMATION OF CARTELS SO AS TO INFLUENCE THE BIDDING PROCESS OR INFLUENCE THE PRICE ETC. SUSPENSION OF BUSINESS DEALINGS COULD BE IN THE FORM OF “HOLD” OR “BANNING” A SUPPLIER/ CONTRACTOR OR A BIDDER AND SHALL BE AS PER “GUIDELINES FOR SUSPENSION OF BUSINESS DEALINGS WITH SUPPLIERS/ CONTRACTORS” AVAILABLE AT BHEL’S WEBSITE “https://www.bhel.com/guidelines-suspension-business-dealings-supplierscontractors”</p> | |
| 12 | REST GENERAL TERMS AND CONDITIONS AS PER GeM | |

| MANUFACTURER'S NAME AND ADDRESS | | | STANDARD QUALITY PLAN | | | | | TO BE FILLED BY BHEL | | | | | | |
|--|------------------------|-----------------|---|---------------|------------------|--------------------|------------------|----------------------|--------|---|---|---------|----|----|
|  BHEL | VENDOR'S NAME | ITEM | PROXIMITY SWITCH (Part no. 157684013, 157684014, 197647129 & 197647130) | | | QP NO. | QA/DF/QP/004 | | | | | | | |
| | | | | | | REV. | 00 | Date: 01.04.2024 | | | | | | |
| | | DRG. NO. | BHEL drawing/ spec./ checklist as per enquiry/P.O. | | | | | | | | | | | |
| | | SPEC. No. | OTO MELARA NO. Q576-84-050 | | | Page 1 of 1 | | | | | | | | |
| SL. NO. | COMPONENT & OPERATIONS | CHARACTERISTICS | CLASS | TYPE OF CHECK | QUANTUM OF CHECK | REFERENCE DOCUMENT | ACCEPTANCE NORMS | FORMAT OF RECORDS | AGENCY | | | REMARKS | | |
| 1 | 2 | 3 | 4 | 5 | 6 | 7 | 8 | 9 | D | M | B | N | 10 | 11 |

1.0 TYPE TEST

| | | | | | | | | | | | | | |
|-----|---|--|-------|----------|-----------------------|--------------------------------|--------------------------------|------|---|---|---|---|--|
| 1.1 | Immersion Test (Test Number 19 of JSS) | Test condition B, Depth=0.4M, duration - 4 hrs, IP-67 TC | Major | Physical | 1 sample/ design type | JSS Spec. JSS 55555-2000 | JSS Spec. JSS 55555-2000 | T.C. | √ | P | V | - | |
| 1.2 | Vibration test (Test Number 28 of JSS) | Amplitude= ±0.120mm (250µm Pk-Pk). Frequency=19Hz. Time=1 hour for each X, Y and Z direction | Major | Physical | 1 sample/ design type | JSS Spec. JSS 55555-2000 | JSS Spec. JSS 55555-2000 | T.C. | √ | P | V | - | |
| 1.3 | High Temperature Test (Test Number 17 of JSS) | Procedure-6, Test condition-K | Major | Physical | 1 sample/ design type | JSS Spec. JSS 55555-2000 | JSS Spec. JSS 55555-2000 | T.C. | √ | P | V | - | |
| 1.4 | Life cycle test | Satisfactory operation of switch assembly up to 2000 cycle | Major | Physical | 1 sample/ design type | BHEL drawing/ spec./ checklist | BHEL drawing/ spec./ checklist | T.C. | √ | P | V | - | |

2.0 ROUTINE TEST

| | | | | | | | | | | | | | |
|-----|---|--|-------|------------|------|--------------------------------|--------------------------------|------|---|---|---|---|--|
| 2.1 | Dimensional check of assembly | Dimensions, cable length, surface end diameter etc. | Major | Visual | 100% | BHEL drawing/ spec./ checklist | BHEL drawing/ spec./ checklist | I.R. | √ | P | V | - | |
| 2.2 | Visual check of assembly | Enclosure body, connector pins and connecting cable etc. | Major | Visual | 100% | Q576-84-050 | No defects | I.R. | √ | P | V | - | |
| 2.3 | Performance control/ Operational check @ 18 Volt DC | Iron block at 7.6 mm | Major | Measure | 100% | Q576-84-050 | +17 to 18 Volt | I.R. | √ | P | V | - | |
| | | Iron block at 8.6 mm | Major | Measure | 100% | Q576-84-050 | ≤ 0.6 volt | I.R. | √ | P | V | - | |
| | | Power flow continuity between pin E&F of connector | Major | Measure | 100% | Q576-84-050 | Q576-84-050 | I.R. | √ | P | V | - | |
| 2.4 | Wiring check | Pin A, B & C | Major | Physical | 100% | Q576-84-050 | Q576-84-050 | I.R. | √ | P | V | - | |
| 2.5 | Insulation resistance | -- | Major | Electrical | 100% | BHEL drawing/ spec./ checklist | BHEL drawing/ spec./ checklist | I.R. | √ | P | V | - | |
| 2.6 | Other test | manufacturer's standard practice | Major | Physical | 100% | Relevant standards | Relevant standards | I.R. | √ | P | V | - | |
| 2.7 | Certificate of compliance w.r.t. ordering documents | -- | Major | Review | 100% | BHEL drawing/ spec./ checklist | BHEL drawing/ spec./ checklist | COC | √ | P | V | - | |
| 2.8 | Identification | Part no., Sr. no., PO no. etc. | Major | Review | 100% | BHEL drawing/ checklist | BHEL drawing/ checklist | I.R. | √ | P | V | - | |
| 2.9 | Packing | | Major | Visual | 100% | Vendor's standard | Vendor's standard | I.R. | √ | P | V | - | |

Note: 1. BHEL reserves right the rights to witness any of the above-mentioned routine test by BHEL or End Customer Indian Navy as per above quality plan at any stage of purchase order execution. However, vendor to provide T.C./ inspection reports as mentioned above for BHEL verification/review along with the delivery of materials. 2. Type test certificates of tests conducted in NABL/Govt. approved labs only will be accepted for BHEL review. In-house TC for clause 1.4 is acceptable for BHEL review.

| | | | |
|--|---|--|---|
| MANUFACTURER/ SUBCONTRACTOR | LEGEND: APPD.: BHEL APPROVED, DRG: DRAWING, SPEC: SPECIFICATION, BOM: BILL OF MATERIAL, MTC: MATERIAL TEST CERTIFICATE, T.C.: TEST CERTIFICATE, INT. REP.: INTERNAL REPORTS, I.R.: INSPECTION REPORTS, COC: CERTIFICATE OF CONFORMANCE, M: MANUFACTURER / SUBCONTRACTOR, B: BHEL /BHEL NOMINATED INSPECTION AGENCY, N: END CUSTOMER/INDIAN NAVY, 'P': PERFORM, 'W': WITNESS, 'V': VERIFICATION, "√" RECORDS IDENTIFIED WITH 'TICK' SHALL BE ESSENTIALLY INCLUDED BY CONTRACTOR IN QA DOCUMENTATION. | REVIEWED BY: BHEL HARIDWAR - QA | (Not Applicable) APPROVED BY: INDIAN NAVY |
|--|---|--|---|

MAKE IN INDIA SELF CERTIFICATION

As per Government Public procurement order no. P-45021/2/2017-BE-II dt.15.06.2017 & P45021/2/2017-PP(BE-II) dated 28.05.2018,29.5.2019, 04.6.2020 and amendment dated 16.09.2020, it is hereby certifying that we

.....
..... (supplier name) are(Class-I/Class-II)
local supplier and will meet the requirement of minimum local content of
(50%/20%) as defined in public procurement order dated 04.6.2020 for material against Enquiry no.
..... Details of
location at which local value addition will be made is as follows: -
.....
.....
.....

We also understand, false declarations will be in breach of the code of integrity under Rule 175(1)(i)(h) of the General Financial Rules for which a bidder or its successors can be debarred for up to two years as per Rule 151 (iii) of the general financial rules along with such other actions as may be permissible under law.

Note:

As per office order P-45021/102/2019-BE-II-Part (1) (E-50310) Dated 04/03/2021, Bidders can't claim itself as "Class-I local supplier/Class-II local suppliers" by claiming the service such as transportation, insurance, installation, commissioning, training & after sales service support like AMC/CMC etc. as local value addition. Bidder offering imported product will fall under the category of Non-Local supplier.

1. ALL VENDORS TO PROVIDE POINT WISE REPLY/CONFIRMATION ALONG WITH RELEVANT SUPPORTING DOCUMENTS TO EACH AND EVERY POINT OF **PRE-QUALIFICATION REQUIREMENT/PQR** FOR ALL ENQUIRY ITEMS. NONCOMPLIANCE OF THESE MAY LEAD TO REJECTION OF OFFER AS THESE ARE ESSENTIAL CONDITION FOR PARTICIPATING IN TENDER ENQUIRY.
2. SUPPLY SHALL BE DONE IN STAGGERED MANNER AS PER BELOW TABLE:

| SLN | MAT CODE | ITEM DISCREPTION | QUANTITY (NOS) | Lot No. | Lot Qty.(NOS) | Dly. Schedule |
|-----|----------------|--|----------------|-----------------|---------------|---------------|
| 1 | W97050084018 | PROXIMITY SWITCH ASSEMBLY SIZE: P/N 157684014(OLDP/N157684011) | 75 | 1 ST | 24 | 31.10.2024 |
| 2 | W97050084018_1 | | | 2 ND | 27 | 31.10.2025 |
| 3 | W97050084018_2 | | | 3 RD | 24 | 31.10.2026 |
| 4 | W97050084026 | PROXIMITY SWITCH ASSY SIZE: P/N 157684013(OLDP/N157684010) | 74 | 1 ST | 23 | 31.10.2024 |
| 5 | W97050084026_1 | | | 2 ND | 27 | 31.10.2025 |
| 6 | W97050084026_2 | | | 3 RD | 24 | 31.10.2026 |
| 7 | W97052602121 | PROXIMITY SWITCH IFRM12P1703/S14L SIZE: P/N 865PS0093 | 175 | 1 ST | 56 | 31.10.2024 |
| 8 | W97052602121_1 | | | 2 ND | 63 | 31.10.2025 |
| 9 | W97052602121_2 | | | 3 RD | 56 | 31.10.2026 |
| 10 | W97052602130 | PROXIMITY SWITCH IFRM12N1703/S14L SIZE: P/N 865PS0031 | 25 | 1 ST | 8 | 31.10.2024 |
| 11 | W97052602130_1 | | | 2 ND | 9 | 31.10.2025 |
| 12 | W97052602130_2 | | | 3 RD | 8 | 31.10.2026 |

3. EARLY DELIVERY ACCEPTABLE FOR LOT 1
4. EARLY DELIVERY ACCEPTABLE 2 MONTHS BEFORE SCHECHDULED DATE FOR LOT 2&3.
5. ALL VENDORS TO PROVIDE POINT WISE REPLY/CONFIRMATION ALONG WITH RELEVANT SUPPORTING DOCUMENTS TO EACH AND EVERY POINT OF **PRE-QUALIFICATION REQUIREMENT/PQR** FOR ALL ENQUIRY ITEMS. NONCOMPLIANCE OF THESE MAY LEAD TO REJECTION OF OFFER AS THESE ARE ESSENTIAL CONDITION FOR PARTICIPATING IN TENDER ENQUIRY.
6. KINDLY UPLOAD/ATTACH THE SPECIFICATION DETAILS/ CATALOGUE OF OFFERED ITEMS.
7. KINDLY **SUBMIT TECHNO-COMMERCIAL CHECKLIST** ALONG WITH YOUR OFFER.
8. KINDLY **SUBMIT PQR SHEET WITH SUPPORTING DOCUMENTS** ALONG WITH YOUR OFFER.
9. KINDLY **SUBMIT SIGNED & STAMPED TECHNICAL PARAMETER CHECKLIST** ALONG WITH YOUR OFFER.
10. FOR PROXIMITY SWITCHES W97050084018 & W97050084026:
VENDORS TO CONFIRM FOR SUBMISSION OF TEST CERTIFICATES AND INSPECTION REPORTS AS PER ATTACHED BHEL SQP NO. "QA/DF/QP/004 REV. 00 ALONGWITH THE MATERIAL DELIVERY. VEDNORS TO PROVIDE ENDORSED COPY OF QP.
11. FOR PROXIMITY SWITCHES- W97052602121 & W97052602130:
A. VENDOR TO CONFIRM TO PROVIDE TEST CERTIFICATES AS PER MANUFACTURER'S STANDARD PRACTICE INCLUDING DOCUMENTS COFORMING TO ENQUIRY SPECIFIED PART NO. ALONG WITH THE MATERIAL.

B. VENDOR TO CONFIRM TO PROVIDE ORIGINAL MANUFACTURER'S CERTIFICATE OF CONFORMANCE ALONG WITH MATERIAL DISPATCH.

C. VENDOR TO CONFIRM TO PROVIDE IDENTIFICATION OF ALL ITEMS AND PROVIDE REPORT ACCORDINGLY.

12. VENDOR TO **SUBMIT MAKE IN INDIA SELF CERTIFICATION** AS PER FORMAT GIVEN ALONG WITH THE ENQUIRY.

13. MSE/MII: THE SUPPLIER NEEDS TO SUBMIT/UPDATE MSE/MII CREDENTIALS ON GEM PORTAL DURING PROFILE UPDATION/ OFFER SUBMISSION STAGE. THE MSE DATA SUBMITTED IS CROSS VERIFIED BY GEM WITH GOVT. OF INDIA UDYAM/NSIC DATABASE THROUGH API INTEGRATION ON REAL TIME BASIS AND FOR MII, A SELF DECLARATION IS BEING GIVEN AND AUTHENTICATED BY AADHAR OTP. IF THE SELLER FAILS TO CLAIM MSE/MII PROVISION ON GEM PORTAL AT PROFILE UPDATION/BID SUBMISSION STAGE, THE SAID SELLER WILL BECOME INELIGIBLE FOR GETTING THE MSE/MII BENEFITS FOR THAT BID AUTOMATICALLY. THE VENDOR CAN ALWAYS CONTACT THE GEM HELPDESK, IN CASE OF ANY ISSUES.

14. THE PRICE QUOTE BY BIDDER SHOULD BE INCLUSIVE OF GST & SHOULD BE ON BHEL HEEP HARIDWAR STORES BASIS.

15. BIDDER'S OFFER IS LIABLE TO BE REJECTED IF THEY DON'T UPLOAD ANY OF THE CERTIFICATES / DOCUMENTS SOUGHT IN THE BID DOCUMENT, ATC AND CORRIGENDUM IF ANY.

16. BREACH OF CONTRACT CLAUSE:

IN CASE OF BREACH OF CONTRACT, WHEREVER THE VALUE OF SECURITY INSTRUMENTS LIKE PERFORMANCE BANK GUARANTEE AVAILABLE WITH BHEL AGAINST THE SAID CONTRACT IS ATLEAST 10% OF THE CONTRACT VALUE, THE SAME BE ENCASHED. IN CASE THE VALUE OF THE SECURITY INSTRUMENTS AVAILABLE IS LESS THAN 10% OF THE CONTRACT VALUE, THE BALANCE AMOUNT BE RECOVERED FROM OTHER FINANCIAL REMEDIES (I.E. AVAILABLE BILLS OF THE CONTRACTOR, RETENTION AMOUNT, ETC. WITH BHEL) OR LEGAL REMEDIES BE PURSUED.

17. ACTION AGAINST BIDDERS / VENDOR / SUPPLIER / CONTRACTOR IN CASE OF DEFAULT:

IN ORDER TO PROTECT THE COMMERCIAL INTERESTS OF BHEL, BHEL SHALL TAKE ACTION AGAINST SUPPLIES / CONTRACTORS BY WAY OF SUSPENSION OF BUSINESS DEALINGS, WHO EITHER FAIL TO PERFORM OR ARE IN DEFAULT WITHOUT ANY REASONABLE CAUSE, CAUSE LOSS OF BUSINESS/ MONEY/ REPUTATION, INDULGE IN MALPRACTICES, CHEATING, BRIBERY, FRAUD OR ANY OTHER MISCONDUCT OR FORMATION OF CARTELS SO AS TO INFLUENCE THE BIDDING PROCESS OR INFLUENCE THE PRICE ETC. SUSPENSION OF BUSINESS DEALINGS COULD BE IN THE FORM OF "HOLD" OR "BANNING" A SUPPLIER/ CONTRACTOR OR A BIDDER AND SHALL BE AS PER "GUIDELINES FOR SUSPENSION OF BUSINESS DEALINGS WITH SUPPLIERS/ CONTRACTORS" AVAILABLE AT BHEL'S WEBSITE <https://www.bhel.com/guidelines-suspension-business-dealings-supplierscontractors>

18. BIDDERS ARE ADVISED TO CHECK APPLICABLE GST ON THEIR OWN BEFORE QUOTING. BUYER WILL NOT TAKE ANY RESPONSIBILITY IN THIS REGARDS. GST REIMBURSEMENT WILL BE AS PER ACTUALS OR AS PER APPLICABLE RATES (WHICHEVER IS LOWER), SUBJECT TO THE MAXIMUM OF QUOTED GST %.

19. BIDDER SHALL SUBMIT THE FOLLOWING DOCUMENTS ALONG WITH THEIR BID FOR VENDOR CODE CREATION:

A. COPY OF PAN CARD B. COPY OF GSTIN C. COPY OF MSE CERIFICATE

20. DEDICATED /TOLL FREE TELEPHONE NO. FOR SERVICE SUPPORT: BIDDER/OEM MUST HAVE DEDICATED/TOLL FREE TELEPHONE NO. FOR SERVICE SUPPORT.

21. DATA SHEET OF THE PRODUCT(S) OFFERED IN THE BID, ARE TO BE UPLOADED ALONG WITH THE BID DOCUMENTS. BUYERS CAN MATCH AND VERIFY THE DATA SHEET WITH THE PRODUCT SPECIFICATIONS

OFFERED. IN CASE OF ANY UNEXPLAINED MISMATCH OF TECHNICAL PARAMETERS, THE BID IS LIABLE FOR REJECTION.

22. SCOPE OF SUPPLY (BID PRICE TO INCLUDE ALL COST COMPONENTS): ONLY SUPPLY OF GOODS.
23. PRODUCTS SUPPLIED SHALL BE NONTOXIC AND HARMLESS TO HEALTH. IN THE CASE OF TOXIC MATERIALS, MATERIAL SAFETY DATA SHEET MAY BE FURNISHED ALONG WITH THE MATERIAL.
24. WHILE GENERATING INVOICE IN GEM PORTAL, THE SELLER MUST UPLOAD SCANNED COPY OF GST INVOICE AND THE SCREENSHOT OF GST PORTAL CONFIRMING PAYMENT OF GST.
25. **PAYMENT TERMS SHALL BE AS PER FOLLOWINGS:**
 - a) **FOR NON-MSES BIDDER:** 100% payment along with taxes, freight & insurance will be made after receipt and acceptance of material and within 90 days from the date of invoice subject to submission of non-discrepant documents within 15 days of supply as per terms and conditions of Purchase Order (THIS IS IN SUPERSESION OF 10 DAYS' TIME AS PROVIDED IN CLAUSE 12 OF GEM GTC).
 - b) **FOR MSES BIDDER:** For MSEs (covered under MSME Act) which are registered and periodically renewed with BHEL, the payment will be made within 45 days or as prescribed in the relevant act. Benefits of MSE (such as EMD Waiver, Tender fee exemption, Price preference, Payment preference etc.) will be given only to those MSE Vendors who are manufacturers of offered items against the NIT. No MSE benefits shall be provided to Agents / Stockists /Dealers / Traders etc. for the items offered but not manufactured by themselves.”
 - c) **FOR MEDIUM ENTERPRISES:** 100% payment along with taxes, freight & insurance will be made after receipt and acceptance of material and within 60 days from the date of invoice subject to submission of non-discrepant documents within 15 days of supply as per terms and conditions of Purchase Order.
 - d) Please note that vendor to adhere to the payment terms as per above. No deviation in payment terms shall be accepted. Vendor to submit their offer accordingly.