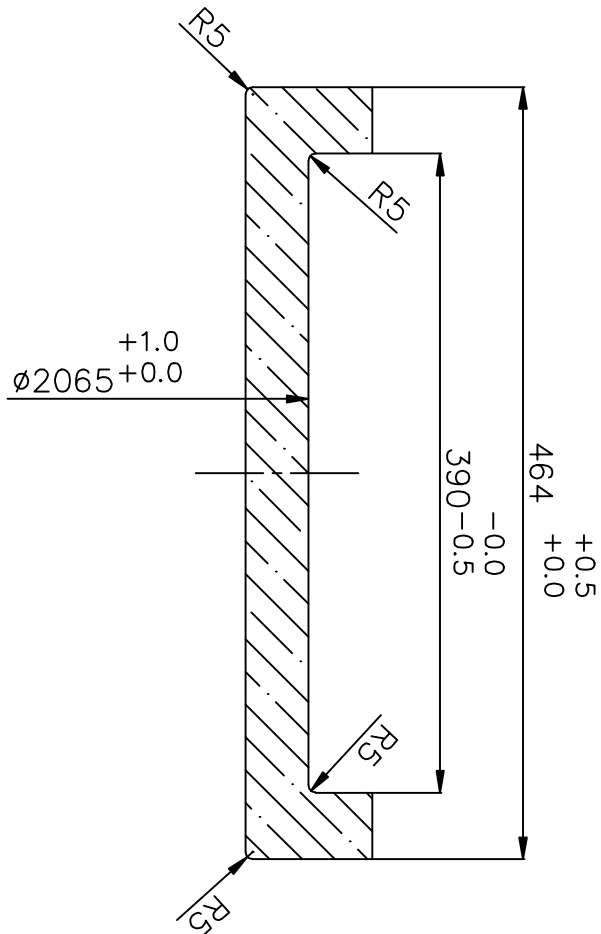
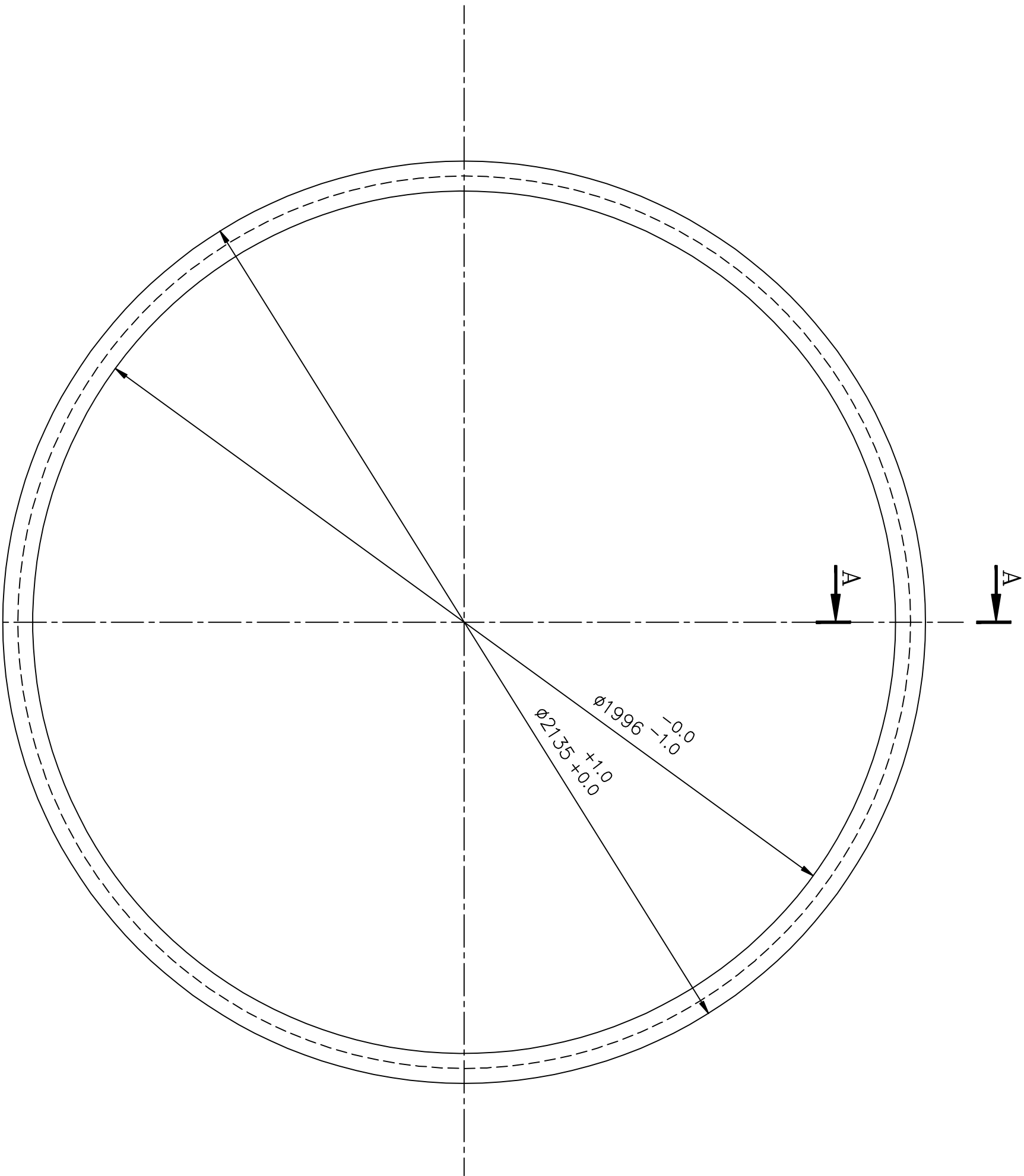


547205-601-29-2 ON DRG



SECTION A-A

1. REF. TO HY0230261 FOR UNSPECIFIED TOLERANCES.

NOTE

01	CASTING		01		BA9750075013	1070.00	
ITEM NO.	DESCRIPTION	DRAWING NO.	VAR. NO.	RAW MATERIAL SIZE OR CASTING DRG. NO. OR FORGING DRG. NO.	MATERIAL CODE	NET WT.	GROSS WT.
						QUANTITY	

THE FOLLOWING CONDITIONS APPLY EXCEPT OTHERWISE STATED.

1. REF. TO HY0230261 FOR UNSPECIFIED TOLERANCES.
2. CHAMFER M/CD. SHARP EDGES 1.2 TO 1.0 AT 45°.
3. INTERNAL M/CD. CORNER RADII 1 TO 0.7
4. THE SURFACE ROUGHNESS WHERE-EVER NOT SHOWN SHALL BE TAKEN FROM THE SURFACE ROUGHNESS SHOWN OUT SIDE THE BACK SLASH GIVEN OR THE TOP MOST RIGHT CORNER OF THE DRG.



BHARAT HEAVY ELECTRICALS LIMITED
HYDERABAD

BBD4772 TUBE MILL

TYPE OF PRODUCT NAME OF CUSTOMER/PROJECT				NAME			
				DRN.	RAZVI	SIGN.	DATE
				CHD.	G.S.N.M.RAO		3.4.02
				APPD.	J.G.K.		3.4.02
DEPT. PULV ENGS. CODE 446				UNTL. DMS. OR. ϕ /m/f	SCALE 1:10	WEIGHT (KG) 1070.00	REF. TO ASSY DRG. —
TITLE BEARING SHELL				DRAWING NO. 2-62-109-50245			REV. 02
				SHEET NO. 01		NO OF SHEETS 01	